

Preparedness and Response

Fiscal Year (FY) 2024 President's Budget Request: +\$38.1 million

To continue to transform CDC into a more response-ready agency, CDC's budget request proposes the funding for the Response Ready Enterprise Data Integration platform (RREDI), the next generation of HHS PROTECT, which is now managed by CDC. RREDI is a common operating platform that provides near real time situational awareness data which can be quickly adapted to support public health emergency responses at any level.

SPOTLIGHT ON IMPACT



RREDI links more than **3,900** users across **30+** federal agencies, **56** states and territories, and the private sector.



Using **300** data sources, RREDI provides data on cases, testing, hospitalizations, mortality, schools, therapeutics, medical supply chains, healthcare system capacity, and much more.

FY 2024 BUDGET REQUEST

The COVID-19 pandemic highlighted the utility of having a common operational picture that enables and establishes a core public health data management and integration platform for use during and in between agency-level emergency responses. This common operational picture enables secure sharing data in near-real time across federal, state, and local governments and the healthcare industry. It supports policymakers, provides critical data to CDC's new Center for Forecasting and Outbreak Analytics, and will be used to communicate the latest timely information for COVID-19, mpox, and other disease threats. The FY 2024 Budget includes \$60 million within CDC for RREDI, building upon \$21.9 million in dedicated FY 2023 funding provided within the Public Health and Social Services Emergency Fund and implemented by CDC, to support this platform.

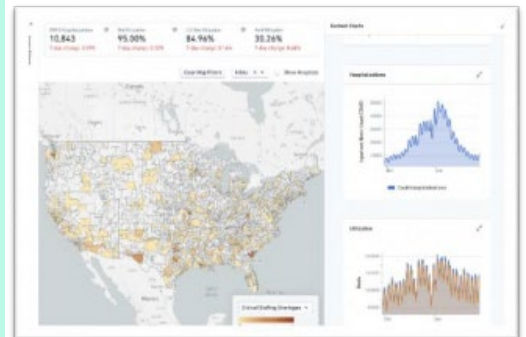
FY 2024 KEY OBJECTIVES

Pandemic Preparedness

- RREDI will enable and establish a core public health data common operating picture by integrating a suite of tools, technologies, and data systems (e.g HHS Protect, DCIPHER) for use during and in the steady-state time periods between agency-level emergency responses that can be relied on during an emergency
- This system will create a seamless suite of highly capable and flexible tools and technologies

RREDI Critical Needs

- Software licensing to support CDC activities and ecosystem
- Services and staff to support platform management and response support for future outbreaks
- Help Desk support to fully support users of the platform
- System and workforce development training for a data-savvy workforce
- Support to provide security monitoring (software and services)
- Management of agreements to allow data sharing between CDC and external partners
- Integration of other CDC data, tools, and platforms with this platform
- Support of an interagency governance structure to provide strategic objectives and aligning to CDC guidelines and strategic planning



U.S. Department of Health and
Human Services
Centers for Disease Control
and Prevention

Updated on March 9, 2023

For more information, please visit: <https://www.cdc.gov/orr/index.htm>