



May 3, 1996 / Vol. 45 / No. SS-3

**MMWR**<sup>TM</sup>

MORBIDITY AND MORTALITY WEEKLY REPORT

---

*CDC  
Surveillance  
Summaries*

## Abortion Surveillance — United States, 1992

U.S. DEPARTMENT OF HEALTH AND HUMAN SERVICES  
Public Health Service  
Centers for Disease Control  
and Prevention (CDC)  
Atlanta, Georgia 30333



The *MMWR* series of publications is published by the Epidemiology Program Office, Centers for Disease Control and Prevention (CDC), Public Health Service, U.S. Department of Health and Human Services, Atlanta, GA 30333.

SUGGESTED CITATION

General: Centers for Disease Control and Prevention. *CDC Surveillance Summaries*, May 3, 1996. MMWR 1996;45(No. SS-3).  
Specific: [Author(s)]. [Title of particular article]. In: *CDC Surveillance Summaries*, May 3, 1996. MMWR 1996;45(No. SS-3):[inclusive page numbers].

Centers for Disease Control and Prevention ..... David Satcher, M.D., Ph.D.  
*Director*

The production of this report as an *MMWR* serial publication was coordinated in:

Epidemiology Program Office..... Stephen B. Thacker, M.D., M.Sc.  
*Director*

Richard A. Goodman, M.D., M.P.H.  
*Editor, MMWR Series*

Scott F. Wetterhall, M.D., M.P.H.  
*Associate Editor, CDC Surveillance Summaries*

Scientific Information and Communications Program

*CDC Surveillance Summaries* ..... Suzanne M. Hewitt, M.P.A.  
*Managing Editor*

Lanette B. Wolcott  
*Project Editor*

Sandra L. Ford  
Morie M. Higgins  
Beverly J. Holland  
Peter M. Jenkins

*Visual Information Specialists*

Use of trade names and commercial sources is for identification only and does not imply endorsement by the Public Health Service or the U.S. Department of Health and Human Services.

Copies can be purchased from Superintendent of Documents, U.S. Government Printing Office, Washington, DC 20402-9325. Telephone: (202) 783-3238.

## Contents

Reports Published in <i>CDC Surveillance Summaries</i> Since January 1, 1985 .....	ii
Introduction .....	2
Methods .....	2
Results .....	3
Discussion .....	21
References .....	35
State and Territorial Epidemiologists and Laboratory Directors .....	Inside back cover

**Reports Published in *CDC Surveillance Summaries* Since January 1, 1985**

<b>Subject</b>	<b>Responsible CIO/Agency*</b>	<b>Most Recent Report</b>
Abortion	NCCDPHP	1996; Vol. 45, No. SS-3
AIDS/HIV		
Distribution by Racial/Ethnic Group Among Black & Hispanic Children & Women of Childbearing Age	NCID	1988; Vol. 37, No. SS-3
Behavioral Risk Factors	NCEHIC	1990; Vol. 39, No. SS-3
Birth Defects	NCCDPHP	1991; Vol. 40, No. SS-4
B.D. Monitoring Program (see also Malformations)	NCEH	1993; Vol. 42, No. SS-1
Contribution of B.D. to Infant Mortality Among Minority Groups	NCEHIC	1990; Vol. 39, No. SS-3
Breast & Cervical Cancer	NCCDPHP	1992; Vol. 41, No. SS-2
<i>Campylobacter</i>	NCID	1988; Vol. 37, No. SS-2
Chancroid	NCPS	1992; Vol. 41, No. SS-3
Chlamydia	NCPS	1993; Vol. 42, No. SS-3
Cholera	NCID	1992; Vol. 41, No. SS-1
Congenital Malformations, Minority Groups	NCEHIC	1988; Vol. 37, No. SS-3
Contraception Practices	NCCDPHP	1992; Vol. 41, No. SS-4
Cytomegalovirus Disease, Congenital	NCID	1992; Vol. 41, No. SS-2
Dengue	NCID	1994; Vol. 43, No. SS-2
Dental Caries & Periodontal Disease Among Mexican-American Children	NCPS	1988; Vol. 37, No. SS-3
Developmental Disabilities	NCEH	1996; Vol. 45, No. SS-2
Diabetes Mellitus	NCCDPHP	1993; Vol. 42, No. SS-2
Dracunculiasis	NCID	1992; Vol. 41, No. SS-1
Ectopic Pregnancy	NCCDPHP	1993; Vol. 42, No. SS-6
Elderly, Hospitalizations Among	NCCDPHP	1991; Vol. 40, No. SS-1
Endometrial & Ovarian Cancers	EPO, NCCDPHP	1986; Vol. 35, No. 2SS
<i>Escherichia coli</i> O157	NCID	1991; Vol. 40, No. SS-1
Evacuation Camps	EPO	1992; Vol. 41, No. SS-4
Family Planning Services at Title X Clinics	NCCDPHP	1995; Vol. 44, No. SS-2
Foodborne Disease	NCID	1990; Vol. 39, No. SS-1
Gonorrhea & Syphilis, Teenagers	NCPS	1993; Vol. 42, No. SS-3
Hazardous Substances Emergency Events	ATSDR	1994; Vol. 43, No. SS-2
Health Surveillance Systems	IHPO	1992; Vol. 41, No. SS-4
Hepatitis	NCID	1985; Vol. 34, No. 1SS
Homicide	NCEHIC	1992; Vol. 41, No. SS-3
Homicides, Black Males	NCEHIC	1988; Vol. 37, No. SS-1
Hysterectomy	NCCDPHP	1986; Vol. 35, No. 1SS
Infant Mortality (see also National Infant Mortality; Birth Defects; Postneonatal Mortality)	NCEHIC	1990; Vol. 39, No. SS-3
Influenza	NCID	1993; Vol. 42, No. SS-1
Injury		
Death Rates, Blacks & Whites	NCEHIC	1988; Vol. 37, No. SS-3
Drownings	NCEHIC	1988; Vol. 37, No. SS-1
Falls, Deaths	NCEHIC	1988; Vol. 37, No. SS-1
Firearm-Related Deaths, Unintentional	NCEHIC	1988; Vol. 37, No. SS-1

**\*Abbreviations**

ATSDR	Agency for Toxic Substances and Disease Registry
CIO	Centers/Institute/Offices
EPO	Epidemiology Program Office
IHPO	International Health Program Office
NCCDPHP	National Center for Chronic Disease Prevention and Health Promotion
NCEH	National Center for Environmental Health
NCEHIC	National Center for Environmental Health and Injury Control
NCID	National Center for Infectious Diseases
NCIPC	National Center for Injury Prevention and Control
NCPS	National Center for Prevention Services
NIOSH	National Institute for Occupational Safety and Health
NIP	National Immunization Program

---

**Reports Published in *CDC Surveillance Summaries* Since January 1, 1985 — Continued**


---

Subject	Responsible CIO/Agency*	Most Recent Report
Head & Neck	NCIPC	1993; Vol. 42, No. SS-5
In Developing Countries	NCEHIC	1992; Vol. 41, No. SS-1
In the Home, Persons <15 Years of Age	NCEHIC	1988; Vol. 37, No. SS-1
Motor Vehicle-Related Deaths	NCEHIC	1988; Vol. 37, No. SS-1
Objectives of Injury Control, State & Local	NCEHIC	1988; Vol. 37, No. SS-1
Objectives of Injury Control, National	NCEHIC	1988; Vol. 37, No. SS-1
Residential Fires, Deaths	NCEHIC	1988; Vol. 37, No. SS-1
Tap Water Scalds	NCEHIC	1988; Vol. 37, No. SS-1
Lead Poisoning, Childhood	NCEHIC	1990; Vol. 39, No. SS-4
Low Birth Weight	NCCDPHP	1990; Vol. 39, No. SS-3
Malaria	NCID	1995; Vol. 44, No. SS-5
Maternal Mortality	NCCDPHP	1991; Vol. 40, No. SS-2
Measles	NCPS	1992; Vol. 41, No. SS-6
Meningococcal Disease	NCID	1993; Vol. 42, No. SS-2
Mining	NIOSH	1986; Vol. 35, No. 2SS
Mumps	NIP	1995; Vol. 44, No. SS-3
National Infant Mortality (see also Infant Mortality; Birth Defects)	NCCDPHP	1989; Vol. 38, No. SS-3
<i>Neisseria gonorrhoeae</i> , Antimicrobial Resistance in	NCPS	1993; Vol. 42, No. SS-3
Neural Tube Defects	NCEH	1995; Vol. 44, No. SS-4
Nosocomial Infection	NCID	1986; Vol. 35, No. 1SS
Occupational Injuries/Disease		
Asthma	NIOSH	1994; Vol. 43, No. SS-1
Hazards, Occupational	NIOSH	1985; Vol. 34, No. 2SS
In Meatpacking Industry	NIOSH	1985; Vol. 34, No. 1SS
Silicosis	NIOSH	1993; Vol. 42, No. SS-5
State Activities	NIOSH	1987; Vol. 36, No. SS-2
Parasites, Intestinal	NCID	1991; Vol. 40, No. SS-4
Pediatric Nutrition	NCCDPHP	1992; Vol. 41, No. SS-7
Pertussis	NCPS	1992; Vol. 41, No. SS-8
Plague	NCID	1985; Vol. 34, No. 2SS
Plague, American Indians	NCID	1988; Vol. 37, No. SS-3
Poliomyelitis	NCPS	1992; Vol. 41, No. SS-1
Postneonatal Mortality	NCCDPHP	1991; Vol. 40, No. SS-2
Pregnancy Nutrition	NCCDPHP	1992; Vol. 41, No. SS-7
Pregnancy, Teenage	NCCDPHP	1993; Vol. 42, No. SS-6
Rabies	NCID	1989; Vol. 38, No. SS-1
Racial/Ethnic Minority Groups	Various	1990; Vol. 39, No. SS-3
Respiratory Disease	NCEHIC	1992; Vol. 41, No. SS-4
Rotavirus	NCID	1992; Vol. 41, No. SS-3
<i>Salmonella</i>	NCID	1988; Vol. 37, No. SS-2
Sexually Transmitted Diseases in Italy	NCPS	1992; Vol. 41, No. SS-1
Smoking	NCCDPHP	1990; Vol. 39, No. SS-3
Smoking-Attributable Mortality	NCCDPHP	1994; Vol. 43, No. SS-1
Tobacco Control Laws, State	NCCDPHP	1995; Vol. 44, No. SS-6
Tobacco-Use Behaviors	NCCDPHP	1994; Vol. 43, No. SS-3
Spina Bifida	NCEH	1996; Vol. 45, No. SS-2
Streptococcal Disease (Group B)	NCID	1992; Vol. 41, No. SS-6
Sudden Unexplained Death Syndrome Among Southeast Asian Refugees	NCEHIC, NCPS	1987; Vol. 36, No. 1SS
Suicides, Persons 15-24 Years of Age	NCEHIC	1988; Vol. 37, No. SS-1
Syphilis, Congenital	NCPS	1993; Vol. 42, No. SS-6
Syphilis, Primary & Secondary	NCPS	1993; Vol. 42, No. SS-3
Tetanus	NCPS	1992; Vol. 41, No. SS-8
Trichinosis	NCID	1991; Vol. 40, No. SS-3
Tuberculosis	NCPS	1991; Vol. 40, No. SS-3
Waterborne Disease Outbreaks	NCID	1996; Vol. 45, No. SS-1
Years of Potential Life Lost	EPO	1992; Vol. 41, No. SS-6
Youth Risk Behaviors	NCCDPHP	1995; Vol. 44, No. SS-1

---

## Abortion Surveillance — United States, 1992

Lisa M. Koonin, M.N., M.P.H.

Jack C. Smith, M.S.

Merrell Ramick

Clarice A. Green, M.D., M.S.

*Division of Reproductive Health  
National Center for Chronic Disease Prevention  
and Health Promotion*

### **Abstract**

**Problem/Condition:** From 1980 through 1992, the number of legal induced abortions reported to CDC remained stable, varying each year by  $\leq 5\%$ .

**Reporting Period Covered:** This report summarizes and reviews information reported to CDC regarding legal induced abortions obtained in the United States during 1992. This report also includes recently reported abortion-related deaths for 1988–1990 and an update on abortion-related deaths for 1985–1987.

**Description of System:** For each year since 1969, CDC has compiled abortion data received from 52 reporting areas (i.e., the 50 states, the District of Columbia, and New York City).

**Results:** In 1992, 1,359,145 abortions were reported—a 2.1% decrease from 1991. The abortion ratio was 335 legal induced abortions per 1,000 live births, and the abortion rate was 23 per 1,000 women 15–44 years of age. Women who were undergoing an abortion were more likely to be young, white, and unmarried; most had had no previous live births and were obtaining an abortion for the first time. More than half (51%) of all abortions were performed at or before the 8th week of gestation, and 87% were before the 13th week. Approximately 14% of abortions were performed at  $\leq 6$  weeks of gestation, 15% were performed at 7 weeks of gestation, and 22% at 8 weeks of gestation. Younger women (i.e., women  $\leq 19$  years of age) were more likely to obtain abortions later in pregnancy than were older women. Sixteen deaths in 1988, 12 deaths in 1989, and five deaths in 1990 were associated with legal induced abortion. The case-fatality rates for 1988, 1989, and 1990, respectively, were 1.2, 0.9, and 0.3 abortion-related deaths per 100,000 legal induced abortions.

**Interpretation:** Since 1980, the number and rate of abortions have remained relatively stable, with only small year-to-year fluctuations of  $\leq 5\%$ . However, since 1987, the abortion-to-live-birth ratio has declined; in 1992, the abortion ratio was the lowest recorded since 1977. More pregnant women have been opting to carry their pregnancies to term rather than choosing to have an abortion. As in previous years, deaths associated with legal induced abortions occurred rarely (i.e., one or fewer deaths per 100,000 legal induced abortions).

**Actions Taken:** The number and characteristics of women who obtain abortions in the United States should continue to be monitored so that efforts to prevent unintended

pregnancy can be assessed and the preventable causes of morbidity and mortality associated with abortions can be identified and reduced.

## INTRODUCTION

In 1969, CDC began abortion surveillance to document the number and characteristics of women obtaining legal induced abortions, to monitor unintended pregnancy, and to assist with efforts to identify and reduce preventable causes of morbidity and mortality associated with abortions. This report is primarily based on surveillance data for 1992 provided to the Division of Reproductive Health in CDC's National Center for Chronic Disease Prevention and Health Promotion.

## METHODS

For 1992, CDC compiled data from 52 reporting areas: the 50 states, the District of Columbia, and New York City. The total number of legal induced abortions was available from all reporting areas; however, not all these areas collected information on the characteristics of women who obtained abortions. Characteristics by age of women who obtained an abortion were available for only 41 states, the District of Columbia, and New York City (which together comprised 62% of abortions reported for 1992); and characteristics by race were available for only 34 states, the District of Columbia, and New York City (51% of abortions). For 47 reporting areas, data were provided from the central health agency;\* for the other five areas, data were provided from hospitals and other medical facilities. Because information regarding residence was unavailable for the majority of women who obtained abortions, the procedures were reported by the state in which they were performed.

Women who obtained legal induced abortions were grouped by 5-year age groups. Both ratios (i.e., the number of abortions per 1,000 live births per year) and rates (the number of abortions per 1,000 women per year) are presented by age group. Ratios were calculated by using the number of live births provided by each state's central health agency (except where noted), and rates were calculated by using the number of women reported in special unpublished tabulations provided by the Bureau of the Census. Because almost all (94%) abortions among women <15 years of age occur among those 13–14 years of age (1), the number of women ages 13–14 years was used as the denominator for calculating abortion rates for the <15-years' age group. Rates for women ≥40 years of age were based on the number of women ages 40–44 years.

Race was categorized by either three groups (i.e., a) white [which included Hispanics], b) black, and c) all other races) or two groups (a) white [which included Hispanics] and b) black and all other races). Other races included Asian/Pacific Islander, Native American, Alaskan Native, and women classified as "other race." In 1990, data regarding Hispanic ethnicity were first available on abortion reports submitted to CDC by central health agencies. In this report for 1992, as in the report for 1991, Hispanic ethnicity was reported separately from race.

---

\*Includes state health departments and the health departments of New York City and the District of Columbia.

In 1992, for the first time, most areas reported week of gestation at the time of abortion for abortions that occurred at  $\leq 8$  weeks of gestation. Most areas reported gestational age (in weeks) at the time of abortion from estimates derived from the time elapsed since the woman's last menstrual period. In eight states, gestational age was reported on the basis of the physician's estimate, which could have included information from the clinical examination as well as the time elapsed since the last menstrual period.

CDC has periodically reported data on abortion-related deaths since 1972. Sources for obtaining such data include national and state vital records, maternal mortality review committees, surveys, private citizens, the media, health-care providers, and medical examiner reports. Clinical records and autopsy reports are requested and reviewed by medical epidemiologists to determine the cause of death and to verify that the death was abortion-related.

An abortion-related death was defined as a death resulting from a) a direct complication of an abortion, b) an indirect complication caused by the chain of events initiated by the abortion, or c) aggravation of a preexisting condition by the physiologic or psychologic effects of the abortion. Each death was then further categorized either as a) not abortion-related or b) legal induced, illegal induced, spontaneous, or unknown depending on the type of abortion.

Abortion-related deaths that occurred during 1988–1990 are included in this report. Also included are trends in case-fatality rates for legal induced abortion for 1972–1990 and updated totals for 1985–1987 that include abortion-related deaths not previously reported to CDC (2).

## RESULTS

For 1992, 1,359,145 legal abortions were reported to CDC, representing a 2.1% decrease from the number reported for 1991 (3) (Table 1). From 1970 through 1982, the reported number of legal abortions in the United States increased every year (Figure 1); the largest percentage increase occurred from 1970 to 1972. From 1976 through 1982, the annual increase declined continuously and reached a low of 0.2% for 1980–1981. From 1980 through 1990, the number of abortions increased steadily; however, year-to-year fluctuations were  $\leq 5\%$ . Since 1990, the annual number of abortions has decreased slightly each year.

The national abortion ratio increased from 1970 to 1980, peaked at 364 per 1,000 live births in 1984, and began to decline steadily after 1987 to 335 per 1,000 in 1992 (Figure 1; Table 2). The national abortion rate increased from 17 abortions per 1,000 women ages 15–44 years in 1974 to 25 per 1,000 in 1980 and has since remained at a rate of 23–24 per 1,000.

In 1992, as in previous years, most abortions were performed in California, Florida, New York City, and Texas; the fewest were performed in Idaho, North Dakota, South Dakota, and Wyoming (3,4) (Table 3). For women whose state of residence was known, approximately 92% had obtained the abortion within their own state. The percentage of abortions obtained by out-of-state residents ranged from approximately 53% in the District of Columbia to  $< 1\%$  in Hawaii. Ten reporting areas could not provide data concerning abortions obtained by out-of-state residents.

In 1992, 41 states, the District of Columbia, and New York City reported legal abortions by age. Women ages 20–24 years obtained 34% of all abortions; women ages



**TABLE 1. Characteristics of women who obtained legal abortions — United States, selected years, 1972–1992**

Characteristic	1972	1973	1976	1980	1985	1987	1989	1990	1991	1992
Reported no. of legal abortions	586,760	615,831	988,267	1,297,606	1,328,570	1,353,671	1,396,658	1,429,577	1,388,937	1,359,145
	<b>Percent distribution*</b>									
<b>Residence</b>										
In-state	56.2	74.8	90.0	92.6	92.4	91.7	91.0	91.8	91.6	92.0
Out-of-state	43.8	25.2	10.0	7.4	7.6	8.3	9.0	8.2	8.4	8.0
<b>Age (yrs)</b>										
≤19	32.6	32.7	32.1	29.2	26.3	25.8	24.2	22.4	21.0	20.1
20–24	32.5	32.0	33.3	35.5	34.7	33.4	32.6	33.2	34.4	34.5
≥25	34.9	35.3	34.6	35.3	39.0	40.8	43.2	44.4	44.6	45.4
<b>Race</b>										
White	77.0	72.5	66.6	69.9	66.6	66.4	64.2	64.8	63.8	61.5
Black	23.0 <sup>†</sup>	27.5 <sup>†</sup>	33.4 <sup>†</sup>	30.1 <sup>†</sup>	29.8	29.3	31.2	31.8	32.5	33.9
Other <sup>§</sup>	—	—	—	—	3.5	4.3	4.6	3.4	3.7	4.6
<b>Hispanic ethnicity</b>										
Hispanic	—	—	—	—	—	—	—	9.8	13.5	15.2
Non-Hispanic	—	—	—	—	—	—	—	90.2	86.5	84.8
<b>Marital status</b>										
Married	29.7	27.4	24.6	23.1	19.3	20.8	20.1	21.7	21.4	20.8
Unmarried	70.3	72.6	75.4	76.9	80.7	79.2	79.9	78.3	78.6	79.2
<b>No. of live births<sup>¶</sup></b>										
0	49.4	48.6	47.7	58.4	56.3	53.6	52.2	49.2	47.8	45.9
1	18.2	18.8	20.7	19.4	21.6	22.8	23.6	24.4	25.3	25.9
2	13.3	14.2	15.4	13.7	14.5	15.5	15.9	16.9	17.5	18.0
3	8.7	8.7	8.3	5.3	5.1	5.5	5.7	6.1	6.4	6.7
≥4	10.4	9.7	7.9	3.2	2.5	2.6	2.6	3.4	3.0	3.5
<b>Type of procedure</b>										
Curettage	88.6	88.4	92.8	95.5	97.5	97.2	98.8	98.8	98.9	98.9
Suction curettage	65.2	74.9	82.6	89.8	94.6	93.4	97.1	96.0	97.3	97.0
Sharp curettage	23.4	13.5	10.2	5.7	2.9	3.8	1.7	2.8	1.6	1.9
Intrauterine instillation	10.4	10.4	6.0	3.1	1.7	1.3	0.9	0.8	0.7	0.7
Other**	1.0	1.2	1.2	1.4	0.8	1.5	0.3	0.4	0.4	0.4
<b>Wks of gestation</b>										
≤8	34.0	36.1	47.0	51.7	50.3	50.4	49.8	51.6	52.3	52.1
≤6	—	—	—	—	—	—	—	—	—	14.1 <sup>††</sup>
7	—	—	—	—	—	—	—	—	—	15.4 <sup>††</sup>
8	—	—	—	—	—	—	—	—	—	21.9 <sup>††</sup>
9–10	30.7	29.4	28.1	26.2	26.6	26.0	25.8	25.3	25.1	24.2
11–12	17.5	17.9	14.4	12.2	12.5	12.4	12.6	11.7	11.5	12.0
13–15	8.4	6.9	4.5	5.1	5.9	6.2	6.6	6.4	6.1	6.0
16–20	8.2	8.0	5.1	3.9	3.9	4.2	4.2	4.0	3.9	4.2
≥21	1.2	1.7	0.9	0.9	0.8	0.8	1.0	1.0	1.1	1.5

\* Excludes unknown values. The number of areas reporting a given characteristic varied. For 1992, the number of areas reporting residence was 42; age, 43; race, 36; ethnicity, 22; marital status, 39; number of live births, 39; type of procedure, 40; and weeks of gestation, 39.

<sup>†</sup> Reported as black and other races.

<sup>§</sup> Includes all other races.

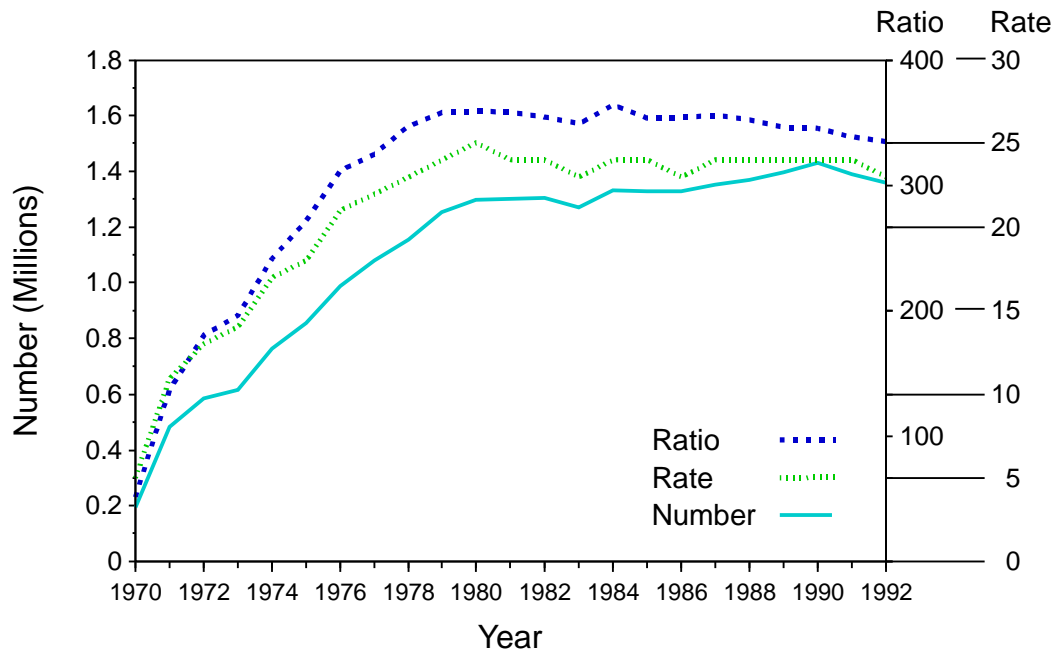
<sup>¶</sup> For 1972, 1973, and 1976, data indicate number of living children.

\*\* Includes hysterectomy and hysterectomy.

<sup>††</sup> Data are for 36 reporting areas only.

— Not available.

**FIGURE 1. Number, ratio,\* and rate† of legal abortions performed annually — United States, 1970–1992**



\* Number of abortions per 1,000 live births.

† Number of abortions per 1,000 women 15–44 years of age.

**TABLE 2. Number, ratio,\* and rate† of legal abortions and source of reporting — United States, 1970–1992**

Year	Total no. of legal abortions	Ratio	Rate	No. of areas reporting	
				Central health agency <sup>§</sup>	Hospitals/Facilities <sup>¶</sup>
1970	193,491	52	5	18	7
1971	485,816	137	11	19	7
1972	586,760	180	13	21	8
1973	615,831	196	14	26	26
1974	763,476	242	17	37	15
1975	854,853	272	18	39	13
1976	988,267	312	21	41	11
1977	1,079,430	325	22	46	6
1978	1,157,776	347	23	48	4
1979	1,251,921	358	24	47	5
1980	1,297,606	359	25	47	5
1981	1,300,760	358	24	46	6
1982	1,303,980	354	24	46	6
1983	1,268,987	349	23	46	6
1984	1,333,521	364	24	44	8
1985	1,328,570	354	24	44	8
1986	1,328,112	354	23	43	9
1987	1,353,671	356	24	45	7
1988	1,371,285	352	24	45	7
1989	1,396,658	346	24	45	7
1990	1,429,577	345	24	46	6
1991	1,388,937	339	24	47	5
1992	1,359,145	335	23	47	5

\* Number of abortions per 1,000 live births.

† Number of abortions per 1,000 women 15–44 years of age.

<sup>§</sup> Abortion data reported by central health agencies, which includes state health departments and the health departments of New York City and the District of Columbia.

<sup>¶</sup> Abortion data reported by hospitals and/or other medical facilities in state.

**TABLE 3. Reported number,\* ratio,† and rate‡ of legal abortions and percentage of abortions obtained by out-of-state residents,¶ by state of occurrence — United States, 1992**

State	Total no. of legal abortions	Ratio	Rate	Percentage of legal abortions obtained by out-of-state residents
Alabama	13,358	215	14	9.3
Alaska	1,783**	152	12	—
Arizona	14,353	209	17	2.8
Arkansas	5,675	163	11	3.0
California	338,700††	564	47	—
Colorado	10,607	195	13	8.4
Connecticut	17,762	373§§	24	—
Delaware	5,601	526	34	—
Dist. of Columbia	17,698	—¶¶	—***	53.2
Florida	69,285	362	25	—
Georgia	38,052	343	23	8.5
Hawaii	5,954	300	23	0.2
Idaho	1,378	80	6	9.3
Illinois	56,552	295§§	21	—
Indiana	12,983	154	10	3.7
Iowa	6,759**	176	11	—
Kansas	10,385	274	19	46.8
Kentucky	8,696	162§§	10	25.5
Louisiana	12,423	176	12	—
Maine	3,226	201	11	7.1
Maryland	19,860	255§§	17	7.1
Massachusetts	34,527	396§§	24	3.9
Michigan	34,496	242	16	3.9
Minnesota	15,546	237	15	10.9
Mississippi	7,555	177	12	23.3
Missouri	13,390	176	11	9.1
Montana	2,869	250	16	15.7
Nebraska	5,637	242	16	19.2
Nevada	8,022	357	26	10.3
New Hampshire	3,129**	196	12	—
New Jersey	38,168	318§§	21	2.5
New Mexico	5,624	202	16	4.8
New York	164,274	582	39	3.2
City	114,700†††	909	—	2.8
State	49,574	318	—	4.1
North Carolina	35,253	339	22	9.0
North Dakota	1,493	169	11	31.9
Ohio	36,019	222	14	9.5
Oklahoma	9,881**	208	14	—
Oregon	12,685	302	19	11.3
Pennsylvania	49,042	300	18	6.5
Rhode Island	6,667	460§§	29	20.5
South Carolina	11,008	196	13	5.7
South Dakota	1,038	94	7	24.9
Tennessee	18,029	245	15	16.1
Texas	91,113	284	22	4.4
Utah	3,941	106	9	12.9
Vermont	2,778	359	20	29.9
Virginia	29,641	306	19	6.0
Washington	27,573	347	23	4.2

**TABLE 3. Reported number,\* ratio,<sup>†</sup> and rate<sup>§</sup> of legal abortions and percentage of abortions obtained by out-of-state residents,<sup>¶</sup> by state of occurrence — United States, 1992 — Continued**

State	Total no. of legal abortions	Ratio	Rate	Percentage of legal abortions obtained by out-of-state residents
West Virginia	2,812	127	7	10.3
Wisconsin	15,549	220	14	5.0
Wyoming	296	44	3	9.8
<b>Total</b>	<b>1,359,145</b>	<b>335</b>	<b>23</b>	<b>8.0</b>

\* Abortion data reported by central health agency unless otherwise specified.

<sup>†</sup> Abortions per 1,000 live births (live-birth data reported by central health agencies unless otherwise specified).

<sup>§</sup> Abortions per 1,000 women 15–44 years of age. The number of women in this age group was obtained from the U.S. Department of Commerce, Bureau of the Census (special unpublished tabulations).

<sup>¶</sup> Based on number of abortions for which residence of women was known.

\*\* Reported by hospitals and/or other medical facilities in state.

†† CDC estimate.

§§ Number of live births obtained from CDC's National Center for Health Statistics, *Advance Report of Final Natality Statistics*, 1992, vol. 43, no. 5, supplement, October 25, 1994.

¶¶ >1,000 abortions per 1,000 live births.

\*\*\* >100 abortions per 1,000 women ages 15–44 years.

††† Reported by the New York City Department of Health.

— Not reported.

<15 years obtained <1% of all abortions (Table 4). Abortion ratios were highest for the youngest women (790 abortions per 1,000 live births for women ages <15 years and 440 per 1,000 for women ages 15–19 years) and the oldest women (454 per 1,000 for women ages ≥40 years); the ratio was lowest for women ages 30–34 years (183 per 1,000 women) (Figure 2). Among teenagers, the abortion ratio was highest for those who were <15 years of age and lowest for those who were 19 years of age (Table 5). In contrast, abortion rates were highest for women ages 20–24 years (42 abortions per 1,000 women) and lowest for women at the reproductive-age extremes (three abortions per 1,000 women ages <15 years and two abortions per 1,000 women ages ≥40 years) (Table 4).

For most age groups, the abortion ratio rose between 1974 and the early to mid-1980s and declined thereafter, particularly for the youngest and oldest women of reproductive age (Figure 3). The abortion ratio for women <15 years of age remains higher than ratios for the other age groups. The abortion ratio for women 15–19 years of age had decreased for 5 consecutive years when, in 1992, the lowest abortion ratio for that age group was reported. The abortion ratio for women 20–34 years of age (i.e., the group with the highest fertility rate) has remained stable since the mid-1980s (5).

Thirty-seven states, the District of Columbia, and New York City reported the gestational age (in weeks) for women who obtained a legal abortion (Table 6A). Of these reporting areas, 35 states and New York City included the gestational age in weeks for abortions performed at ≤8 weeks of gestation (Table 6B). During 1992, approximately 51% of reported legal abortions were obtained at ≤8 weeks of gestation, and about 87% were obtained at <13 weeks (Table 6A). Approximately 14% of abortions were performed during the earliest weeks of gestation (i.e., at ≤6 weeks), and approximately 15% and 22% were performed at 7 weeks and 8 weeks of gestation, respectively (Table 6B). Few abortions were provided after 15 weeks of gestation—approximately

**TABLE 4. Reported legal abortions, by age of women who obtained an abortion and state in which the procedure was performed — selected states,\* United States, 1992**

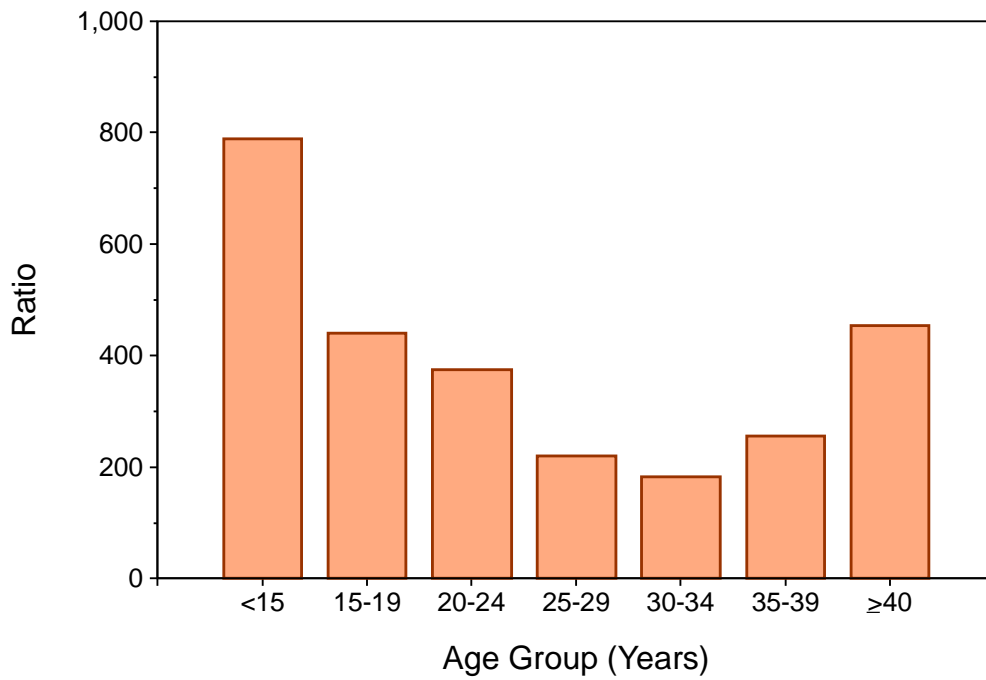
State	Age group (yrs)														Total			
	<15		15-19		20-24		25-29		30-34		35-39		≥40		Unknown		No.	%
	No.	%	No.	%	No.	%	No.	%	No.	%	No.	%	No.	%	No.	%	No.	%
Alabama	192	1.4	3,125	23.4	4,738	35.5	2,651	19.8	1,541	11.5	870	6.5	240	1.8	1	0.0	13,358	100.0
Arizona	94	0.7	2,598	18.1	4,800	33.4	3,151	22.0	1,896	13.2	995	6.9	253	1.8	566	3.9	14,353	100.0
Arkansas	53	0.9	1,321	23.3	2,111	37.2	1,041	18.3	660	11.6	375	6.6	96	1.7	18	0.3	5,675	100.0
Colorado	87	0.8	2,337	22.0	3,435	32.4	2,109	19.9	1,493	14.1	859	8.1	240	2.3	47	0.4	10,607	100.0
Dist. of Columbia	85	1.0	1,353	16.6	2,692	33.0	2,245	27.5	1,068	13.1	574	7.0	127	1.6	7	0.1	8,151 <sup>†</sup>	100.0
Georgia	452	1.2	7,542	19.8	13,131	34.5	8,432	22.2	4,991	13.1	2,636	6.9	680	1.8	188	0.5	38,052	100.0
Hawaii	60	1.0	1,200	20.2	1,925	32.3	1,318	22.1	847	14.2	453	7.6	148	2.5	3	0.1	5,954	100.0
Idaho	6	0.4	345	25.0	410	29.8	279	20.2	178	12.9	126	9.1	34	2.5	0	0.0	1,378	100.0
Indiana	118	0.9	2,679	20.6	4,802	37.0	2,669	20.6	1,628	12.5	844	6.5	208	1.6	35	0.3	12,983	100.0
Kansas	106	1.0	2,591	24.9	3,569	34.4	1,953	18.8	1,241	11.9	702	6.8	180	1.7	43	0.4	10,385	100.0
Kentucky	143	1.6	2,285	26.3	2,993	34.4	1,622	18.7	982	11.3	490	5.6	152	1.7	29	0.3	8,696	100.0
Louisiana	191	1.5	2,597	20.9	4,288	34.5	2,571	20.7	1,638	13.2	838	6.7	252	2.0	48	0.4	12,423	100.0
Maine	19	0.6	619	19.2	1,054	32.7	697	21.6	471	14.6	246	7.6	82	2.5	38	1.2	3,226	100.0
Maryland	191	1.0	3,796	19.1	6,792	34.2	4,793	24.1	2,775	14.0	1,187	6.0	326	1.6	0	0.0	19,860	100.0
Massachusetts	205	0.6	5,391	15.6	11,597	33.6	8,145	23.6	5,192	15.0	2,802	8.1	847	2.5	348	1.0	34,527	100.0
Michigan	301	0.9	7,512	21.8	12,242	35.5	7,037	20.4	4,442	12.9	2,361	6.8	561	1.6	40	0.1	34,496	100.0
Minnesota	89	0.6	2,769	17.8	5,369	34.5	3,441	22.1	2,214	14.2	1,139	7.3	524	3.4	1	0.0	15,546	100.0
Mississippi	108	1.4	1,731	22.9	2,840	37.6	1,431	18.9	853	11.3	466	6.2	119	1.6	7	0.1	7,555	100.0
Missouri	130	1.0	2,546	19.0	4,632	34.6	2,879	21.5	1,918	14.3	1,049	7.8	233	1.7	3	0.0	13,390	100.0
Montana	29	1.0	700	24.4	872	30.4	516	18.0	431	15.0	252	8.8	69	2.4	0	0.0	2,869	100.0
Nebraska	41	0.7	1,236	21.9	2,079	36.9	1,113	19.7	665	11.8	364	6.5	137	2.4	2	0.0	5,637	100.0
Nevada	61	0.8	1,298	16.2	2,538	31.6	1,830	22.8	1,285	16.0	712	8.9	159	2.0	139	1.7	8,022	100.0
New Jersey <sup>§</sup>	269	0.7	7,201	18.9	13,137	34.4	8,971	23.5	5,259	13.8	2,509	6.6	724	1.9	98	0.3	38,168	100.0
New Mexico	40	0.7	1,242	22.1	1,814	32.3	1,146	20.4	737	13.1	450	8.0	152	2.7	43	0.8	5,624	100.0
New York	1,251	0.8	28,417	17.3	52,083	31.7	39,586	24.1	25,026	15.2	12,496	7.6	3,673	2.2	1,742	1.1	164,274	100.0
City	940	0.8	18,405	16.0	34,899	30.4	29,099	25.4	18,607	16.2	9,077	7.9	2,669	2.3	1,004	0.9	114,700	100.0
State	311	0.6	10,012	20.2	17,184	34.7	10,487	21.2	6,419	12.9	3,419	6.9	1,004	2.0	738	1.5	49,574	100.0
North Carolina	370	1.0	7,776	22.1	12,742	36.1	7,066	20.0	4,099	11.6	2,101	6.0	541	1.5	558	1.6	35,253	100.0
North Dakota	6	0.4	368	24.6	545	36.5	258	17.3	182	12.2	102	6.8	32	2.1	0	0.0	1,493	100.0
Ohio	195	0.5	5,607	15.6	12,316	34.2	7,035	19.5	4,261	11.8	2,433	6.8	777	2.2	3,395	9.4	36,019	100.0
Oregon	79	0.6	2,637	20.8	4,375	34.5	2,570	20.3	1,635	12.9	926	7.3	270	2.1	193	1.5	12,685	100.0
Pennsylvania	484	1.0	9,858	20.1	17,521	35.7	10,356	21.1	6,375	13.0	3,477	7.1	970	2.0	1	0.0	49,042	100.0
Rhode Island	40	0.6	1,180	17.7	2,378	35.7	1,450	21.7	943	14.1	529	7.9	146	2.2	1	0.0	6,667	100.0
South Carolina	113	1.0	2,281	20.7	4,027	36.6	2,341	21.3	1,342	12.2	719	6.5	185	1.7	0	0.0	11,008	100.0

**TABLE 4. Reported legal abortions, by age of women who obtained an abortion and state in which the procedure was performed — selected states,<sup>\*</sup> United States, 1992 — Continued**

State	Age group (yrs)																Total	
	<15		15-19		20-24		25-29		30-34		35-39		≥40		Unknown		No.	%
	No.	%	No.	%	No.	%	No.	%	No.	%	No.	%	No.	%	No.	%	No.	%
South Dakota	5	0.5	287	27.6	326	31.4	177	17.1	141	13.6	73	7.0	29	2.8	0	0.0	1,038	100.0
Tennessee	206	1.1	3,853	21.4	6,455	35.8	3,723	20.7	2,280	12.6	1,163	6.5	346	1.9	3	0.0	18,029	100.0
Texas	437	0.5	15,614	17.1	32,417	35.6	20,448	22.4	13,025	14.3	6,817	7.5	2,108	2.3	247	0.3	91,113	100.0
Utah	41	1.0	780	19.8	1,360	34.5	834	21.2	524	13.3	300	7.6	77	2.0	25	0.6	3,941	100.0
Vermont	16	0.6	602	21.7	945	34.0	521	18.8	379	13.6	247	8.9	68	2.4	0	0.0	2,778	100.0
Virginia	232	0.8	5,497	18.5	10,103	34.1	6,901	23.3	4,109	13.9	2,175	7.3	561	1.9	63	0.2	29,641	100.0
Washington	179	0.6	5,576	20.2	9,194	33.3	5,888	21.4	3,897	14.1	2,159	7.8	620	2.2	60	0.2	27,573	100.0
West Virginia	32	1.1	681	24.2	1,027	36.5	505	18.0	321	11.4	191	6.8	52	1.8	3	0.1	2,812	100.0
Wisconsin	114	0.8	3,141	21.3	5,231	35.4	3,156	21.4	1,905	12.9	973	6.6	252	1.7	1	0.0	14,773 <sup>†</sup>	100.0
Wyoming	1	0.3	73	24.7	79	26.7	62	20.9	44	14.9	31	10.5	6	2.0	0	0.0	296	100.0
<b>Total</b>	<b>6,871</b>	<b>0.8</b>	<b>160,242</b>	<b>19.1</b>	<b>286,984</b>	<b>34.2</b>	<b>184,917</b>	<b>22.0</b>	<b>114,893</b>	<b>13.7</b>	<b>60,211</b>	<b>7.2</b>	<b>17,256</b>	<b>2.1</b>	<b>7,996</b>	<b>1.0</b>	<b>839,370</b>	<b>100.0</b>
Abortion ratio <sup>¶</sup>	790		440		376		222		183		256		454				290	
Abortion rate <sup>**</sup>	3		26		42		25		14		8		2				17	

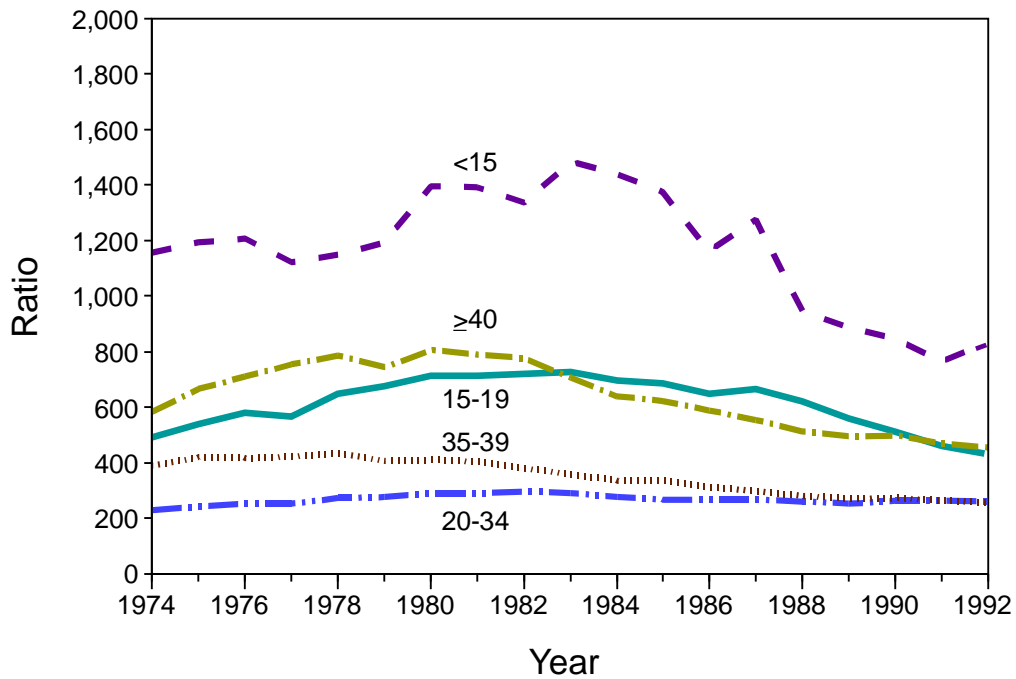
<sup>\*</sup> All 41 states for which data were available, the District of Columbia, and New York City.  
<sup>†</sup> Includes residents only.  
<sup>§</sup> Based on known distribution of 1991 data.  
<sup>¶</sup> Calculated as the number of legal abortions obtained by women in a given age group per 1,000 live births to women in the same age group for these states. For each state, abortions obtained by women of unknown age are distributed according to the known age distribution for that state. Excludes states reporting age unknown for >15% of women who obtained an abortion.  
<sup>\*\*</sup> Calculated as the number of legal abortions obtained by women in a given age group per 1,000 women in the same age group for these states. For each state, abortions obtained by women of unknown age are distributed according to the known age distribution for that state. Excludes states reporting age unknown for >15% of women who obtained an abortion.

**FIGURE 2. Abortion ratios,\* by age group of women who obtained a legal abortion — United States, 1992**



\* Number of abortions per 1,000 live births.

**FIGURE 3. Abortion ratios,\* by age group† of women who obtained a legal abortion — United States, 1974–1992**



\*Number of abortions per 1,000 live births.

†In years.

4% of abortions were obtained at 16–20 weeks of gestation, and 1.5% were obtained at  $\geq 21$  weeks (Figure 4).

Approximately 98% of legal abortions were performed by curettage, and <1% by intrauterine saline or prostaglandin instillation (Table 7). Hysterectomy and hysterotomy were used in only a few cases; <0.006% of abortions were performed by using these methods.

Thirty-four states, the District of Columbia, and New York City reported the race of women who obtained legal abortions. As in previous years, almost two thirds of women who obtained abortions were white (3,4) (Table 8). The abortion ratio for black women (518 per 1,000 live births), however, was more than twice that for white women (236 per 1,000 live births). The abortion ratio for women of other races (352 per 1,000 live births) was approximately 1.5 times greater than that for white women. In addition, the abortion rate for black women (41 per 1,000 black women) was 2.7 times greater than the rate for white women (15 per 1,000 white women).

Twenty states, the District of Columbia, and New York City reported data on legal abortions classified by Hispanic ethnicity (Table 9). The percentage of abortions obtained by Hispanic women in these reporting areas ranged from <1% in several states to approximately 39% in New Mexico. For Hispanic women in these reporting areas, the abortion ratio was 307 per 1,000 live births—slightly lower than the ratio for non-Hispanics in the same areas (326 per 1,000 live births). However, the abortion rate per 1,000 Hispanic women (32 per 1,000 women) was greater than the rate per 1,000 non-Hispanic women (21 per 1,000 women).

Seventy-six percent of women who obtained abortions were unmarried (Table 10). The percentage varied by state, from 59% in Utah to 85% in Mississippi and Wisconsin. The abortion ratio was more than nine times greater for unmarried women than for married women (790 vs. 84 abortions per 1,000 live births).

Approximately 46% of women who obtained legal abortions had had no previous live births, and about 89% had had two or fewer previous live births (Table 11). The abortion ratio was highest for women who had had no live births and lowest for women who had had one live birth.

About 54% of the women were obtaining an abortion for the first time. Approximately 17% of the women had had at least two previous abortions (Table 12).

The age distribution of women who obtained a legal abortion differed only slightly by race (Table 13). However, the percentage of women who were black or of other races and who were <15 years of age at the time they obtained an abortion, although small (1.2%), was twice the percentage of white women <15 years of age (0.6%). The percentage of unmarried women who were black or of other races (82%) was also slightly higher than the percentage who were white (77%). Few differences were found by age and Hispanic ethnicity (Table 14), but among married women who had obtained an abortion, a slightly higher percentage were Hispanic than non-Hispanic.

Most (87%) women obtained an abortion during the first 12 weeks of pregnancy; however, teenagers (i.e., women ages  $\leq 19$  years) were more likely than older women to obtain abortions later in pregnancy (Tables 15A and 15B). The percentage of women who obtained an abortion early in pregnancy (i.e., at  $\leq 8$  weeks of gestation) increased with age, and the percentage who obtained an abortion late in pregnancy (at  $\geq 16$  weeks of gestation) decreased with age (Figure 5). Women who were black or of other races were more likely to obtain an abortion later in pregnancy than were white women (Table 15A). Although Hispanic women were slightly more likely than



**TABLE 5. Reported legal abortions obtained by teenagers, by age and state of occurrence — selected states,\* United States, 1992**

State	Age (yrs)												Total	
	<15		15		16		17		18		19			
	No.	%	No.	%	No.	%	No.	%	No.	%	No.	%	No.	%
Alabama	192	5.8	261	7.9	446	13.4	581	17.5	840	25.3	997	30.1	3,317	100.0
Arizona	94	3.5	174	6.5	305	11.3	474	17.6	734	27.3	911	33.8	2,692	100.0
Arkansas	53	3.9	94	6.8	176	12.8	204	14.8	422	30.7	425	30.9	1,374	100.0
Colorado	87	3.6	140	5.8	353	14.6	520	21.5	644	26.6	680	28.1	2,424	100.0
Georgia	452	5.7	607	7.6	1,004	12.6	1,278	16.0	2,160	27.0	2,493	31.2	7,994	100.0
Hawaii	60	4.8	106	8.4	168	13.3	247	19.6	299	23.7	380	30.2	1,260	100.0
Idaho	6	1.7	24	6.8	43	12.3	44	12.5	126	35.9	108	30.8	351	100.0
Indiana	118	4.2	195	7.0	330	11.8	383	13.7	881	31.5	890	31.8	2,797	100.0
Kansas	106	3.9	248	9.2	408	15.1	527	19.5	657	24.4	751	27.8	2,697	100.0
Kentucky	143	5.9	183	7.5	355	14.6	525	21.6	570	23.5	652	26.9	2,428	100.0
Louisiana	191	6.9	232	8.3	323	11.6	378	13.6	822	29.5	842	30.2	2,788	100.0
Maine	19	3.0	34	5.3	75	11.8	146	22.9	173	27.1	191	29.9	638	100.0
Maryland	191	4.8	324	8.1	548	13.7	715	17.9	1,007	25.3	1,202	30.1	3,987	100.0
Massachusetts	205	3.7	311	5.6	585	10.5	850	15.2	1,604	28.7	2,041	36.5	5,596	100.0
Michigan	301	3.9	515	6.6	933	11.9	1,332	17.0	2,209	28.3	2,523	32.3	7,813	100.0
Minnesota	89	3.1	178	6.2	353	12.4	449	15.7	838	29.3	951	33.3	2,858	100.0
Mississippi	108	5.9	180	9.8	252	13.7	310	16.9	477	25.9	512	27.8	1,839	100.0
Missouri	130	4.9	228	8.5	286	10.7	398	14.9	729	27.2	905	33.8	2,676	100.0
Montana	29	4.0	54	7.4	118	16.2	142	19.5	201	27.6	185	25.4	729	100.0
Nebraska	41	3.2	76	6.0	151	11.8	191	15.0	391	30.6	427	33.4	1,277	100.0
Nevada	61	4.5	81	6.0	191	14.1	239	17.6	381	28.0	406	29.9	1,359	100.0
New Jersey†	269	3.6	489	6.5	865	11.6	1,404	18.8	2,009	26.9	2,434	32.6	7,470	100.0
New Mexico	40	3.1	86	6.7	193	15.1	258	20.1	352	27.5	353	27.5	1,282	100.0
New York	1,251	4.2	2,173	7.3	3,916	13.2	5,737	19.3	7,650	25.8	8,941	30.1	29,668	100.0
City	940	4.9	1,508	7.8	2,620	13.5	3,734	19.3	4,820	24.9	5,723	29.6	19,345	100.0
State	311	3.0	665	6.4	1,296	12.6	2,003	19.4	2,830	27.4	3,218	31.2	10,323	100.0
North Carolina	370	4.5	578	7.1	1,032	12.7	1,549	19.0	2,144	26.3	2,473	30.4	8,146	100.0
North Dakota	6	1.6	20	5.3	43	11.5	57	15.2	123	32.9	125	33.4	374	100.0
Ohio	195	3.4	336	5.8	602	10.4	941	16.2	1,517	26.1	2,211	38.1	5,802	100.0
Oregon	79	2.9	182	6.7	352	13.0	543	20.0	747	27.5	813	29.9	2,716	100.0
Pennsylvania	484	4.7	724	7.0	1,312	12.7	1,865	18.0	2,850	27.6	3,107	30.0	10,342	100.0
Rhode Island	40	3.3	79	6.5	101	8.3	155	12.7	401	32.9	444	36.4	1,220	100.0
South Carolina	113	4.7	210	8.8	243	10.2	447	18.7	661	27.6	720	30.1	2,394	100.0
South Dakota	5	1.7	29	9.9	54	18.5	62	21.2	79	27.1	63	21.6	292	100.0
Tennessee	206	5.1	292	7.2	467	11.5	661	16.3	1,165	28.7	1,268	31.2	4,059	100.0
Texas	437	2.7	860	5.4	1,764	11.0	2,871	17.9	4,382	27.3	5,737	35.7	16,051	100.0

**TABLE 5. Reported legal abortions obtained by teenagers, by age and state of occurrence — selected states,\* United States, 1992 — Continued**

State	Age (yrs)													
	<15		15		16		17		18		19		Total	
	No.	%	No.	%	No.	%	No.	%	No.	%	No.	%	No.	%
Utah	41	5.0	55	6.7	92	11.2	133	16.2	234	28.5	266	32.4	821	100.0
Vermont	16	2.6	39	6.3	76	12.3	114	18.4	159	25.7	214	34.6	618	100.0
Virginia	232	4.0	381	6.7	716	12.5	1,015	17.7	1,584	27.6	1,801	31.4	5,729	100.0
Washington	179	3.1	422	7.3	743	12.9	1,148	19.9	1,551	27.0	1,712	29.7	5,755	100.0
West Virginia	32	4.5	50	7.0	92	12.9	118	16.5	209	29.3	212	29.7	713	100.0
Wisconsin	114	3.5	220	6.8	387	11.9	553	17.0	889	27.3	1,092	33.5	3,255 <sup>§</sup>	100.0
Wyoming	1	1.4	6	8.1	7	9.5	11	14.9	21	28.4	28	37.8	74	100.0
<b>Total</b>	<b>6,786</b>	<b>4.1</b>	<b>11,476</b>	<b>6.9</b>	<b>20,460</b>	<b>12.3</b>	<b>29,575</b>	<b>17.9</b>	<b>44,892</b>	<b>27.1</b>	<b>52,486</b>	<b>31.7</b>	<b>165,675</b>	<b>100.0</b>
Abortion ratio <sup>¶</sup>	787		553		477		420		450		409		447	
Abortion rate <sup>**</sup>	3		9		17		24		37		44		13	

\* All 41 states for which data were available and New York City.

† Based on known distribution of 1991 data.

§ Includes residents only.

¶ Calculated as the number of legal abortions obtained by women of a given age per 1,000 live births to women of the same age for these states.

\*\* Calculated as the number of legal abortions obtained by women of a given age per 1,000 women of the same age for these states.

**TABLE 6A. Reported legal abortions, by weeks of gestation\* and state of occurrence — selected states,† United States, 1992**

State	Weeks of gestation														Total	
	≤8		9–10		11–12		13–15		16–20		≥21		Unknown			
	No.	%	No.	%	No.	%	No.	%	No.	%	No.	%	No.	%	No.	%
Alabama <sup>§</sup>	6,845	51.2	3,702	27.7	1,425	10.7	750	5.6	360	2.7	189	1.4	87	0.7	13,358	100.0
Arkansas	3,045	53.7	1,321	23.3	499	8.8	239	4.2	131	2.3	5	0.1	435	7.7	5,675	100.0
Colorado	3,803	35.9	3,743	35.3	1,642	15.5	771	7.3	497	4.7	129	1.2	22	0.2	10,607	100.0
Dist. of Columbia	4,329	53.1	1,646	20.2	1,333	16.4	562	6.9	226 <sup>¶</sup>	2.8	19 <sup>**</sup>	0.2	36	0.4	8,151 <sup>††</sup>	100.0
Georgia	13,547	35.6	10,386	27.3	6,522	17.1	3,049	8.0	1,696	4.5	787	2.1	2,065	5.4	38,052	100.0
Hawaii <sup>§</sup>	2,936	49.3	1,540	25.9	656	11.0	366	6.1	336	5.6	59	1.0	61	1.0	5,954	100.0
Idaho	750	54.4	413	30.0	178	12.9	25	1.8	8	0.6	2	0.1	2	0.1	1,378	100.0
Indiana	9,490	73.1	2,409	18.6	666	5.1	169	1.3	101	0.8	1	0.0	147	1.1	12,983	100.0
Kansas	4,677	45.0	2,019	19.4	1,005	9.7	631	6.1	712	6.9	934	9.0	407	3.9	10,385	100.0
Kentucky	3,982	45.8	1,900	21.8	1,118	12.9	654	7.5	629	7.2	240	2.8	173	2.0	8,696	100.0
Louisiana	5,394	43.4	3,696	29.8	1,484	11.9	849	6.8	687	5.5	205	1.7	108	0.9	12,423	100.0
Maine	1,469	45.5	1,048	32.5	480	14.9	128	4.0	35	1.1	8	0.2	58	1.8	3,226	100.0
Maryland <sup>§</sup>	11,111	55.9	4,848	24.4	2,153	10.8	1,079	5.4	591	3.0	5	0.0	73	0.4	19,860	100.0
Michigan	19,937	57.8	7,208	20.9	3,524	10.2	2,441	7.1	1,251	3.6	123	0.4	12	0.0	34,496	100.0
Minnesota	8,729	56.1	3,243	20.9	1,757	11.3	831	5.3	716	4.6	270	1.7	0	0.0	15,546	100.0
Mississippi	3,965	52.5	1,722	22.8	836	11.1	582	7.7	267	3.5	54	0.7	129	1.7	7,555	100.0
Missouri	4,718	35.2	4,397	32.8	2,651	19.8	1,051	7.8	496	3.7	76	0.6	1	0.0	13,390	100.0
Montana <sup>§</sup>	1,700	59.3	587	20.5	282	9.8	152	5.3	120	4.2	21	0.7	7	0.2	2,869	100.0
Nevada	4,784	59.6	1,648	20.5	959	12.0	326	4.1	222	2.8	6	0.1	77	1.0	8,022	100.0
New Jersey <sup>§§</sup>	15,724	41.2	6,562	17.2	7,378	19.3	3,073	8.1	2,711	7.1	2,267	5.9	453	1.2	38,168	100.0
New Mexico	2,841	50.5	1,004	17.9	570	10.1	344	6.1	332	5.9	37	0.7	496	8.8	5,624	100.0
New York	88,072	53.6	34,968	21.3	16,440	10.0	8,662	5.3	8,742	5.3	3,306	2.0	4,084	2.5	164,274	100.0
City	62,004	54.1	22,937	20.0	11,017	9.6	5,837	5.1	7,608	6.6	3,122	2.7	2,175	1.9	114,700	100.0
State	26,068	52.6	12,031	24.3	5,423	10.9	2,825	5.7	1,134	2.3	184	0.4	1,909	3.9	49,574	100.0
North Carolina	17,459	49.5	8,413	23.9	4,539	12.9	2,549	7.2	776	2.2	61	0.2	1,456	4.1	35,253	100.0
North Dakota <sup>§</sup>	827	55.4	347	23.2	160	10.7	138	9.2	20	1.3	0	0.0	1	0.1	1,493	100.0
Oregon	6,706	52.9	3,433	27.1	1,273	10.0	483	3.8	368	2.9	165	1.3	257	2.0	12,685	100.0
Pennsylvania	24,547	50.1	13,175	26.9	5,801	11.8	3,148	6.4	2,011	4.1	349	0.7	11	0.0	49,042	100.0
Rhode Island	3,331	50.0	2,063	30.9	702	10.5	341	5.1	219	3.3	8	0.1	3	0.0	6,667	100.0
South Carolina	5,970	54.2	3,085	28.0	1,549	14.1	167	1.5	64	0.6	24	0.2	149	1.4	11,008	100.0
South Dakota	645	62.1	263	25.3	126	12.1	2	0.2	0	0.0	0	0.0	2	0.2	1,038	100.0
Tennessee <sup>§</sup>	9,201	51.0	4,858	26.9	2,540	14.1	1,221	6.8	157	0.9	22	0.1	30	0.2	18,029	100.0
Texas	49,009	53.8	20,591	22.6	10,102	11.1	6,077	6.7	4,177	4.6	955	1.0	202	0.2	91,113	100.0
Utah	2,672	67.8	665	16.9	286	7.3	162	4.1	135	3.4	5	0.1	16	0.4	3,941	100.0
Vermont	1,645	59.2	771	27.8	252	9.1	90	3.2	15	0.5	5	0.2	0	0.0	2,778	100.0

**TABLE 6A. Reported legal abortions, by weeks of gestation\* and state of occurrence — selected states,<sup>†</sup> United States, 1992 — Continued**

State	Weeks of gestation														Total	
	≤8		9-10		11-12		13-15		16-20		≥21		Unknown			
	No.	%	No.	%	No.	%	No.	%	No.	%	No.	%	No.	%	No.	%
Virginia	16,513	55.7	8,617	29.1	3,133	10.6	724	2.4	446	1.5	120	0.4	88	0.3	29,641	100.0
Washington <sup>§</sup>	15,356	55.7	6,700	24.3	2,434	8.8	1,428	5.2	1,201	4.4	352	1.3	102	0.4	27,573	100.0
West Virginia	963	34.2	1,073	38.2	502	17.9	178	6.3	37	1.3	1	0.0	58	2.1	2,812	100.0
Wisconsin	7,049	47.7	4,177	28.3	1,825	12.4	1,025	6.9	582	3.9	115	0.8	0	0.0	14,773 <sup>††</sup>	100.0
Wyoming <sup>§</sup>	146	49.3	122	41.2	27	9.1	0	0.0	0	0.0	0	0.0	1	0.3	296	100.0
<b>Total</b>	<b>383,887</b>	<b>51.3</b>	<b>178,363</b>	<b>23.8</b>	<b>88,809</b>	<b>11.9</b>	<b>44,467</b>	<b>5.9</b>	<b>31,074</b>	<b>4.1</b>	<b>10,925</b>	<b>1.5</b>	<b>11,309</b>	<b>1.5</b>	<b>748,834</b>	<b>100.0</b>

\* Reported legal abortions obtained at ≤8 weeks of gestation are presented in Table 6B by single weeks of gestation.

<sup>†</sup> All 37 states for which data were available, the District of Columbia, and New York City; excludes two states where unknown gestational age is >15%.

<sup>§</sup> Weeks of gestation are based on physicians' estimates.

<sup>¶</sup> Includes 16-19 weeks only.

\*\* Includes gestation of ≥20 weeks.

<sup>††</sup> Includes residents only.

<sup>§§</sup> Based on known distribution of 1991 data.

**TABLE 6B. Reported legal abortions obtained at  $\leq 8$  weeks of gestation, by weeks of gestation, and total number of abortions — selected states,\* United States, 1992**

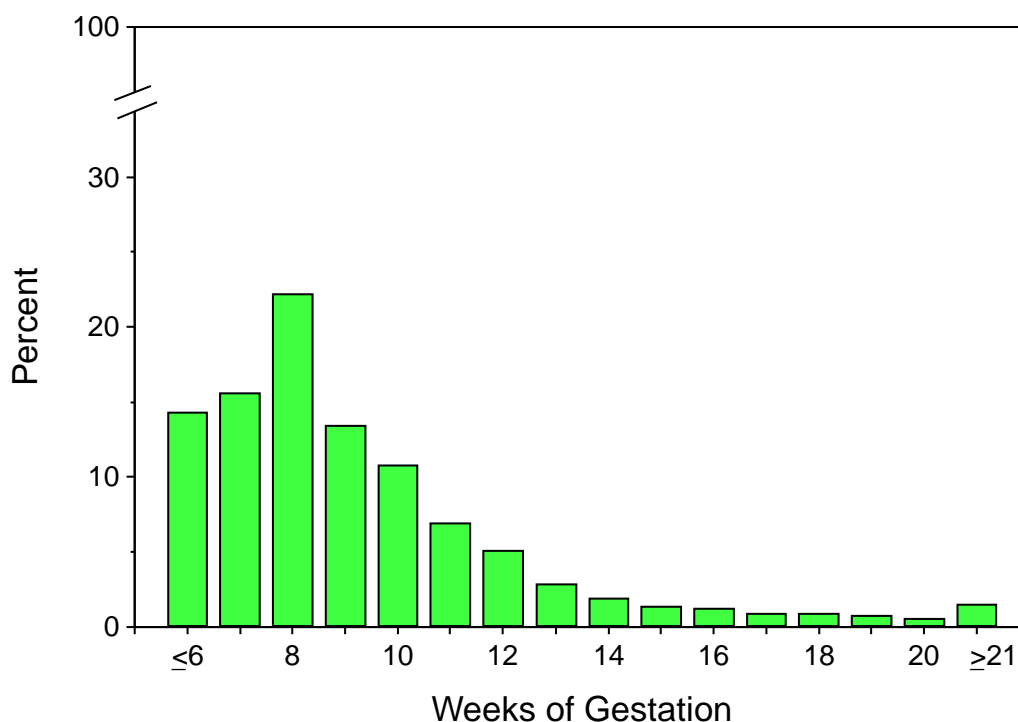
State	Weeks of gestation						Total abortions obtained		
	$\leq 6$		7		8		$\leq 8$ wks of gestation		No. obtained at all wks of gestation
	No.	%	No.	%	No.	%	No.	%	
Alabama <sup>†</sup>	2,279	17.1	1,854	13.9	2,712	20.3	6,845	51.2	13,358
Arkansas	875	15.4	1,168	20.6	1,002	17.7	3,045	53.7	5,675
Colorado	819	7.7	812	7.7	2,172	20.5	3,803	35.9	10,607
Georgia	2,636	6.9	4,603	12.1	6,308	16.6	13,547	35.6	38,052
Hawaii <sup>†</sup>	551	9.3	1,038	17.4	1,347	22.6	2,936	49.3	5,954
Idaho	235	17.1	193	14.0	322	23.4	750	54.4	1,378
Indiana	3,472	26.7	3,161	24.3	2,857	22.0	9,490	73.1	12,983
Kansas	826	8.0	2,035	19.6	1,816	17.5	4,677	45.0	10,385
Kentucky	1,045	12.0	1,159	13.3	1,778	20.4	3,982	45.8	8,696
Louisiana	1,002	8.1	1,767	14.2	2,625	21.1	5,394	43.4	12,423
Maine	287	8.9	460	14.3	722	22.4	1,469	45.5	3,226
Maryland <sup>†</sup>	4,276	21.5	2,096	10.6	4,739	23.9	11,111	55.9	19,860
Michigan	7,177	20.8	6,037	17.5	6,723	19.5	19,937	57.8	34,496
Minnesota	1,815	11.7	2,614	16.8	4,300	27.7	8,729	56.1	15,546
Mississippi	1,521	20.1	1,304	17.3	1,140	15.1	3,965	52.5	7,555
Missouri	578	4.3	1,342	10.0	2,798	20.9	4,718	35.2	13,390
Montana <sup>†</sup>	632	22.0	598	20.8	470	16.4	1,700	59.3	2,869
Nevada	639	8.0	2,080	25.9	2,065	25.7	4,784	59.6	8,022
New Jersey <sup>§</sup>	3,457	9.1	3,053	8.0	9,214	24.1	15,724	41.2	38,168
New York	24,919	15.2	28,494	17.3	34,659	21.1	88,072	53.6	164,274
City	18,137	15.8	18,508	16.1	25,359	22.1	62,004	54.1	114,700
State	6,782	13.7	9,986	20.1	9,300	18.8	26,068	52.6	49,574
North Carolina	5,703	16.2	5,984	17.0	5,772	16.4	17,459	49.5	35,253
North Dakota <sup>†</sup>	89	6.0	349	23.4	389	26.1	827	55.4	1,493
Oregon	1,331	10.5	2,172	17.1	3,203	25.3	6,706	52.9	12,685
Pennsylvania	6,039	12.3	6,302	12.9	12,206	24.9	24,547	50.1	49,042
Rhode Island	537	8.1	1,215	18.2	1,579	23.7	3,331	50.0	6,667
South Carolina	1,968	17.9	1,882	17.1	2,120	19.3	5,970	54.2	11,008
South Dakota	44	4.2	250	24.1	351	33.8	645	62.1	1,038
Tennessee <sup>†</sup>	2,479	13.8	2,960	16.4	3,762	20.9	9,201	51.0	18,029
Texas	14,282	15.7	14,755	16.2	19,972	21.9	49,009	53.8	91,113
Utah	1,382	35.1	784	19.9	506	12.8	2,672	67.8	3,941
Vermont	350	12.6	702	25.3	593	21.3	1,645	59.2	2,778
Virginia	3,858	13.0	2,980	10.1	9,675	32.6	16,513	55.7	29,641
Washington <sup>†</sup>	4,136	15.0	4,607	16.7	6,613	24.0	15,356	55.7	27,573
West Virginia	38	1.4	65	2.3	860	30.6	963	34.2	2,812
Wyoming <sup>†</sup>	17	5.7	30	10.1	99	33.4	146	49.3	296
<b>Total</b>	<b>101,294</b>	<b>14.1</b>	<b>110,905</b>	<b>15.4</b>	<b>157,469</b>	<b>21.9</b>	<b>369,668</b>	<b>51.3</b>	<b>720,286</b>

\* All 35 states for which data were available and New York City. Excludes the District of Columbia, New Mexico, and Wisconsin, which were included in Table 6A but did not provide single weeks of gestation for abortions obtained at  $\leq 8$  weeks.

<sup>†</sup> Weeks of gestation are based on physicians' estimates.

<sup>§</sup> Based on known distribution of 1991 data.

**FIGURE 4. Percentage of legal induced abortions, by single weeks of gestation at the time of abortion — United States,\* 1992**



\*Of the 39 areas reporting weeks of gestation, only 36 areas reported single weeks of gestation for women who obtained abortions at  $\leq 8$  weeks.

non-Hispanic women to have had an abortion at  $\leq 8$  weeks of gestation, the overall differences between Hispanic and non-Hispanic women in the timing of abortions were minimal.

More than 99% of abortions at  $\leq 12$  weeks of gestation were performed by curettage (primarily suction procedures) (Table 16). After 12 weeks of gestation, the most frequently used procedure was also curettage, although it was usually reported as dilatation and evacuation (D&E). Approximately half of the intrauterine instillations involved the use of saline and were performed at  $\geq 16$  weeks of gestation.

Thirty-one possible abortion-related deaths were reported to CDC for 1988. Twenty-four of these deaths were categorized as having an abortion-related cause (i.e., 16 deaths were associated with legal induced abortions, and eight deaths with spontaneous abortion) (Table 17). The remaining seven deaths were classified as not abortion-related. Twenty-seven possible abortion-related deaths were reported to CDC for 1989. Of these deaths, 17 were associated with abortion-related causes (i.e., 12 deaths were associated with legal induced abortion, one with illegal induced abortion, and four with spontaneous abortion). Ten deaths were classified as not abortion-related. A total of 18 possible abortion-related deaths were reported to CDC for 1990. Ten of these deaths resulted from abortion-related causes (i.e., five deaths were associated with legal induced abortion and five with spontaneous abortion). The remaining eight deaths were classified as not abortion-related. Possible abortion-related deaths for 1991 through 1993 are being investigated and have not yet been categorized.

**TABLE 7. Reported legal abortions, by type of procedure and state in which the procedure was performed — selected states,\* United States, 1992**

State	Procedure																Total	
	Suction curettage		Sharp curettage		All curettage		Intrauterine saline instillation		Prostaglandin instillation		Hysterotomy/Hysterectomy		Other†		Unknown			
	No.	%	No.	%	No.	%	No.	%	No.	%	No.	%	No.	%	No.	%	No.	%
Alabama	13,161 <sup>§</sup>	98.5	7	0.1	13,168	98.6	1	0.0	12	0.1	1	0.0	25	0.2	151	1.1	13,358	100.0
Arizona	14,207	99.0	5	0.0	14,212	99.0	0	0.0	0	0.0	0	0.0	0	0.0	141	1.0	14,353	100.0
Arkansas	5,313 <sup>§</sup>	93.6	318	5.6	5,631	99.2	13	0.2	0	0.0	1	0.0	30	0.5	0	0.0	5,675	100.0
Colorado	10,251 <sup>§</sup>	96.6	19	0.2	10,270	96.8	13	0.1	33	0.3	2	0.0	288	2.7	1	0.0	10,607	100.0
Dist. of Columbia	8,120	99.6	0	0.0	8,120	99.6	18	0.2	0	0.0	0	0.0	12	0.1	1	0.0	8,151 <sup>¶</sup>	100.0
Georgia	33,455 <sup>§</sup>	87.9	4,081	10.7	37,536	98.6	6	0.0	486	1.3	3	0.0	0	0.0	21	0.1	38,052	100.0
Hawaii	5,897	99.0	2	0.0	5,899	99.1	0	0.0	16	0.3	0	0.0	27	0.5	12	0.2	5,954	100.0
Idaho	1,367	99.2	4	0.3	1,371	99.5	2	0.1	2	0.1	2	0.1	1	0.1	0	0.0	1,378	100.0
Indiana	12,803	98.6	12	0.1	12,815	98.7	0	0.0	0	0.0	0	0.0	140	1.1	28	0.2	12,983	100.0
Kansas	9,670 <sup>§</sup>	93.1	0	0.0	9,670	93.1	0	0.0	2	0.0	0	0.0	1	0.0	712	6.9	10,385	100.0
Kentucky	7,820 <sup>§</sup>	89.9	771	8.9	8,591	98.8	3	0.0	3	0.0	1	0.0	6	0.1	92	1.1	8,696	100.0
Maine	3,162 <sup>§</sup>	98.1	8	0.2	3,170	98.3	0	0.0	1	0.0	2	0.1	32	1.0	21	0.7	3,226	100.0
Maryland	19,435	97.9	39	0.2	19,474	98.1	78	0.4	150	0.8	1	0.0	156	0.8	1	0.0	19,860	100.0
Massachusetts	33,119	95.9	179	0.5	33,298	96.4	321	0.9	767	2.2	0	0.0	0	0.0	141	0.4	34,527	100.0
Michigan	34,416 <sup>§</sup>	99.8	0	0.0	34,416	99.8	0	0.0	78	0.2	0	0.0	2	0.0	0	0.0	34,496	100.0
Minnesota	15,305 <sup>§</sup>	98.4	6	0.0	15,311	98.5	1	0.0	2	0.0	1	0.0	7	0.0	224	1.4	15,546	100.0
Mississippi	7,217 <sup>§</sup>	95.5	281	3.7	7,498	99.2	1	0.0	41	0.5	1	0.0	9	0.1	5	0.1	7,555	100.0
Missouri	13,336 <sup>§</sup>	99.6	15	0.1	13,351	99.7	0	0.0	13	0.1	0	0.0	20	0.1	6	0.0	13,390	100.0
Montana	2,860 <sup>§</sup>	99.7	8	0.3	2,868	100.0	0	0.0	0	0.0	0	0.0	1	0.0	0	0.0	2,869	100.0
Nebraska	5,625	99.7	5	0.1	5,630	99.8	0	0.0	3	0.1	1	0.0	3	0.1	6	0.1	5,643**	100.0
Nevada	7,524	93.8	3	0.0	7,527	93.8	167	2.1	0	0.0	0	0.0	1	0.0	327	4.1	8,022	100.0
New Jersey <sup>††</sup>	29,922	78.4	7,542	19.8	37,464	98.2	303	0.8	44	0.1	9	0.0	6	0.0	342	0.9	38,168	100.0
New Mexico	5,269	93.7	11	0.2	5,280	93.9	340	6.0	0	0.0	0	0.0	0	0.0	4	0.1	5,624	100.0
New York	154,907	94.3	880	0.5	155,787	94.8	947	0.6	348	0.2	4	0.0	979	0.6	6,209	3.8	164,274	100.0
City	111,331 <sup>§</sup>	97.1	732	0.6	112,063	97.7	917	0.8	242	0.2	3	0.0	767	0.7	708	0.6	114,700	100.0
State	43,576 <sup>§</sup>	87.9	148	0.3	43,724	88.2	30	0.1	106	0.2	1	0.0	212	0.4	5,501	11.1	49,574	100.0
North Carolina	33,894	96.1	74	0.2	33,968	96.4	109	0.3	176	0.5	1	0.0	121	0.3	878	2.5	35,253	100.0
North Dakota	1,493	100.0	0	0.0	1,493	100.0	0	0.0	0	0.0	0	0.0	0	0.0	0	0.0	1,493	100.0
Oregon	12,466 <sup>§</sup>	98.3	1	0.0	12,467	98.3	0	0.0	24	0.2	1	0.0	3	0.0	190	1.5	12,685	100.0
Pennsylvania	48,727 <sup>§</sup>	99.4	18	0.0	48,745	99.4	146	0.3	34	0.1	0	0.0	117	0.2	0	0.0	49,042	100.0
Rhode Island	6,609 <sup>§</sup>	99.1	38	0.6	6,647	99.7	1	0.0	5	0.1	0	0.0	13	0.2	1	0.0	6,667	100.0

**TABLE 7. Reported legal abortions, by type of procedure and state in which the procedure was performed — selected states,\* United States, 1992 — Continued**

State	Procedure																	
	Suction curettage		Sharp curettage		All curettage		Intrauterine saline instillation		Prostaglandin instillation		Hysterotomy/Hysterectomy		Other†		Unknown		Total	
	No.	%	No.	%	No.	%	No.	%	No.	%	No.	%	No.	%	No.	%	No.	%
South Carolina	10,951 <sup>§</sup>	99.5	3	0.0	10,954	99.5	7	0.1	37	0.3	0	0.0	9	0.1	1	0.0	11,008	100.0
South Dakota	1,038	100.0	0	0.0	1,038	100.0	0	0.0	0	0.0	0	0.0	0	0.0	0	0.0	1,038	100.0
Tennessee	17,986 <sup>§</sup>	99.8	4	0.0	17,990	99.8	7	0.0	32	0.2	0	0.0	0	0.0	0	0.0	18,029	100.0
Texas	89,399 <sup>§§</sup>	98.1	—	0.0	89,399	98.1	—	0.0	544 <sup>¶¶</sup>	0.6	10	0.0	843	0.9	317	0.3	91,113	100.0
Utah	3,921 <sup>§</sup>	99.5	6	0.2	3,927	99.6	0	0.0	1	0.0	0	0.0	7	0.2	6	0.2	3,941	100.0
Vermont	2,757 <sup>§</sup>	99.2	1	0.0	2,758	99.3	0	0.0	3	0.1	0	0.0	16	0.6	1	0.0	2,778	100.0
Virginia	29,367 <sup>§</sup>	99.1	26	0.1	29,393	99.2	17	0.1	81	0.3	4	0.0	58	0.2	88	0.3	29,641	100.0
Washington	27,449 <sup>§</sup>	99.6	6	0.0	27,455	99.6	12	0.0	45	0.2	0	0.0	9	0.0	52	0.2	27,573	100.0
West Virginia	2,812 <sup>§</sup>	100.0	0	0.0	2,812	100.0	0	0.0	0	0.0	0	0.0	0	0.0	0	0.0	2,812	100.0
Wyoming	296	100.0	0	0.0	296	100.0	0	0.0	0	0.0	0	0.0	0	0.0	0	0.0	296	100.0
<b>Total</b>	<b>743,326</b>	<b>95.8</b>	<b>14,373</b>	<b>1.9</b>	<b>757,699</b>	<b>97.6</b>	<b>2,513</b>	<b>0.3</b>	<b>2,983</b>	<b>0.4</b>	<b>45</b>	<b>0.0</b>	<b>2,942</b>	<b>0.4</b>	<b>9,979</b>	<b>1.3</b>	<b>776,161</b>	<b>100.0</b>

\* All 38 states for which data were available, the District of Columbia, and New York City.

† Includes instillation procedures not reported as a specific category and procedures reported as "other."

§ Includes dilatation and evacuation procedures.

¶ Includes residents only.

\*\* Does not add to total abortions reported because of some reported combination procedures.

†† Based on known distribution of 1991 data.

§§ Includes dilatation and evacuation procedures and all vacuum aspirations.

¶¶ Includes all chemical inductions.

— Not reported.



**TABLE 8. Reported legal abortions, by race of women who obtained an abortion and state in which the procedure was performed — selected states,\* United States, 1992**

State	Race								Total	
	White <sup>†</sup>		Black		Other		Unknown			
	No.	%	No.	%	No.	%	No.	%	No.	%
Alabama	7,339	54.9	5,567	41.7	224	1.7	228	1.7	13,358	100.0
Arizona	11,673	81.3	786	5.5	809	5.6	1,085	7.6	14,353	100.0
Arkansas	3,944	69.5	1,606	28.3	73	1.3	52	0.9	5,675	100.0
Dist. of Columbia	1,252	15.4	6,735	82.6	130	1.6	34	0.4	8,151 <sup>§</sup>	100.0
Georgia	18,069	47.5	18,334	48.2	690	1.8	959	2.5	38,052	100.0
Hawaii	1,823	30.6	176	3.0	3,249	54.6	706	11.9	5,954	100.0
Idaho	1,314	95.4	11	0.8	50	3.6	3	0.2	1,378	100.0
Indiana	9,612	74.0	2,868	22.1	203	1.6	300	2.3	12,983	100.0
Kansas	8,125	78.2	1,766	17.0	294	2.8	200	1.9	10,385	100.0
Kentucky	6,800	78.2	1,622	18.7	209	2.4	65	0.7	8,696	100.0
Louisiana	6,299	50.7	5,890 <sup>¶</sup>	47.4	—	—	234	1.9	12,423	100.0
Maine	3,064	95.0	25	0.8	75	2.3	62	1.9	3,226	100.0
Maryland	8,696	43.8	9,830	49.5	1,146	5.8	188	0.9	19,860	100.0
Minnesota	13,146	84.6	1,237	8.0	1,046	6.7	117	0.8	15,546	100.0
Mississippi	3,425	45.3	4,072	53.9	55	0.7	3	0.0	7,555	100.0
Missouri	8,367	62.5	4,662	34.8	308	2.3	53	0.4	13,390	100.0
Montana	2,383	83.1	12	0.4	184	6.4	290	10.1	2,869	100.0
Nevada	6,798	84.7	698	8.7	352	4.4	174	2.2	8,022	100.0
New Jersey**	14,070	36.9	16,437	43.1	7,543	19.8	118	0.3	38,168	100.0
New Mexico	4,838	86.0	134	2.4	652	11.6	0	0.0	5,624	100.0
New York	82,654	50.3	69,483	42.3	4,373	2.7	7,764	4.7	164,274	100.0
City	48,389	42.2	59,088	51.5	3,851	3.4	3,372	2.9	114,700	100.0
State	34,265	69.1	10,395	21.0	522	1.1	4,392	8.9	49,574	100.0
North Carolina	19,634	55.7	13,780	39.1	1,228	3.5	611	1.7	35,253	100.0
North Dakota	1,345	90.1	17	1.1	129	8.6	2	0.1	1,493	100.0
Oregon	11,201	88.3	581	4.6	596	4.7	307	2.4	12,685	100.0
Pennsylvania	30,652	62.5	17,066	34.8	1,292	2.6	32	0.1	49,042	100.0
Rhode Island	5,389	80.8	910	13.6	314	4.7	54	0.8	6,667	100.0
South Carolina	5,907	53.7	4,933	44.8	167	1.5	1	0.0	11,008	100.0
South Dakota	949	91.4	0	0.0	89	8.6	0	0.0	1,038	100.0
Tennessee	11,246	62.4	6,497	36.0	255	1.4	31	0.2	18,029	100.0
Texas	67,401	74.0	18,228	20.0	3,473	3.8	2,011	2.2	91,113	100.0
Utah	3,342	84.8	82	2.1	401	10.2	116	2.9	3,941	100.0
Vermont	2,711	97.6	20	0.7	47	1.7	0	0.0	2,778	100.0
Virginia	17,864	60.3	10,737	36.2	893	3.0	147	0.5	29,641	100.0
West Virginia	2,417	86.0	367	13.1	25	0.9	3	0.1	2,812	100.0
Wisconsin	11,022	74.6	3,111	21.1	507	3.4	133 <sup>††</sup>	0.9	14,773 <sup>§§</sup>	100.0
<b>Total</b>	<b>414,771</b>	<b>60.1</b>	<b>228,280</b>	<b>33.1</b>	<b>31,081</b>	<b>4.5</b>	<b>16,083</b>	<b>2.3</b>	<b>690,215</b>	<b>100.0</b>
Abortion ratio <sup>§§</sup>	236		518		352 <sup>¶¶</sup>				295	
Abortion rate <sup>***</sup>	15		41		22				20	

\* All 34 states for which data were available, the District of Columbia, and New York City; excludes three states reporting race unknown for >15% of women who obtained abortions.

† White race includes women of Hispanic ethnicity.

§ Includes residents only.

¶ Reported as black and "other" races.

\*\* Based on known distribution of 1991 data.

†† Includes women of "other" race.

§§ Calculated as the number of legal abortions obtained by women of a given race per 1,000 live births to women of the same race for these states. For each state, data for women of unknown race were distributed according to the known racial distribution for that state.

¶¶ Ratio for "other" race excludes Louisiana because abortions for blacks and others were grouped together.

\*\*\* Calculated as the number of legal abortions obtained by women of a given race per 1,000 women 15–44 years of age of the same race for these states. For each state, data for women of unknown race were distributed according to the known racial distribution for that state.

— Not reported.

The updated total numbers of abortion-related deaths for 1985, 1986, and 1987 include one additional death per year that had not been reported previously to CDC (Table 17). Thus, the total number of legal abortion-related deaths per year for 1985 and 1986 increased from 10 to 11, and for 1987 the total increased from six to seven. The case-fatality rate for both 1985 and 1986 remained at 0.8, whereas for 1987 it increased from 0.4 to 0.5 deaths per 100,000 legal induced abortions. In 1987, four deaths that were classified originally as being related to spontaneous abortions were reclassified after further investigation as not being abortion-related. Since 1980, the case-fatality rate for deaths associated with legal induced abortions has remained at less than or equal to one death per 100,000 legal induced abortions (Figure 6).

## DISCUSSION

When compared with the numbers reported for previous years, the number of abortions performed each year since 1980 in the United States has remained relatively stable. However, the number has been decreasing since 1990 (i.e., the year in which the number of abortions was highest) (4).

**TABLE 9. Reported legal abortions, by Hispanic ethnicity of women who obtained an abortion and state in which the procedure was performed — selected states,\* United States, 1992**

State	Ethnicity						Total	
	Hispanic		Non-Hispanic		Unknown			
	No.	%	No.	%	No.	%	No.	%
Arizona	3,001	20.9	10,267	71.5	1,085	7.6	14,353	100.0
Arkansas	17	0.3	5,070	89.3	588	10.4	5,675	100.0
Dist. of Columbia	563	6.9	7,554	92.7	34	0.4	8,151 <sup>†</sup>	100.0
Georgia	458	1.2	36,313	95.4	1,281	3.4	38,052	100.0
Idaho	88	6.4	1,285	93.3	5	0.4	1,378	100.0
Kansas	399	3.8	9,842	94.8	144	1.4	10,385	100.0
Minnesota	188	1.2	15,241	98.0	117	0.8	15,546	100.0
Mississippi	15	0.2	7,530	99.7	10	0.1	7,555	100.0
New Jersey <sup>§</sup>	5,933	15.5	32,117	84.1	118	0.3	38,168	100.0
New Mexico	2,211	39.3	3,413	60.7	0	0.0	5,624	100.0
New York	32,634	19.9	110,524	67.3	21,116	12.9	164,274	100.0
City	30,683	26.8	69,663	60.7	14,354	12.5	114,700	100.0
State	1,951	3.9	40,861	82.4	6,762	13.6	49,574	100.0
North Dakota	17	1.1	1,405	94.1	71	4.8	1,493	100.0
Oregon	578	4.6	11,395	89.8	712	5.6	12,685	100.0
Pennsylvania	1,232	2.5	47,791	97.4	19	0.0	49,042	100.0
Rhode Island	130	1.9	5,620	84.3	917	13.8	6,667	100.0
South Carolina	120	1.1	10,885	98.9	3	0.0	11,008	100.0
Tennessee	97	0.5	17,909	99.3	23	0.1	18,029	100.0
Texas	26,364	28.9	62,738	68.9	2,011	2.2	91,113	100.0
Utah	309	7.8	3,622	91.9	10	0.3	3,941	100.0
Vermont	11	0.4	2,764	99.5	3	0.1	2,778	100.0
Wisconsin	494	3.3	14,279	96.7	0	0.0	14,773 <sup>†</sup>	100.0
<b>Total</b>	<b>74,859</b>	<b>14.4</b>	<b>417,564</b>	<b>80.2</b>	<b>28,267</b>	<b>5.4</b>	<b>520,690</b>	<b>100.0</b>
Abortion ratio <sup>¶</sup>	307		326				323	
Abortion rate <sup>**</sup>	32		21				22	

\* All 20 states for which data were available, the District of Columbia, and New York City; excludes nine states where unknown ethnicity was >15%.

<sup>†</sup> Includes residents only.

<sup>§</sup> Based on known distribution of 1991 data.

<sup>¶</sup> Calculated as the number of legal abortions obtained by women of Hispanic origin per 1,000 live births to women of Hispanic origin for these states. For each state, data for women of unknown Hispanic origin were distributed according to the known distribution of Hispanics for that state.

<sup>\*\*</sup> Calculated as the number of legal abortions obtained by women of Hispanic origin per 1,000 women 15–44 years of age to women of Hispanic origin for these states. For each state, data for women of unknown Hispanic origin were distributed according to the known distribution of Hispanics for that state.

**TABLE 10. Reported legal abortions, by marital status of women who obtained an abortion and state in which the procedure was performed — selected states,\* United States, 1992**

State	Marital status						Total	
	Married <sup>†</sup>		Unmarried <sup>§</sup>		Unknown			
	No.	%	No.	%	No.	%	No.	%
Alabama	2,471	18.5	10,550	79.0	337	2.5	13,358	100.0
Arizona	2,957	20.6	9,332	65.0	2,064	14.4	14,353	100.0
Arkansas	1,126	19.8	4,394	77.4	155	2.7	5,675	100.0
Colorado	2,295	21.6	8,198	77.3	114	1.1	10,607	100.0
Dist. of Columbia	1,125	13.8	6,725	82.5	301	3.7	8,151 <sup>¶</sup>	100.0
Georgia	7,460	19.6	30,182	79.3	410	1.1	38,052	100.0
Hawaii	1,478	24.8	4,431	74.4	45	0.8	5,954	100.0
Idaho	342	24.8	1,032	74.9	4	0.3	1,378	100.0
Indiana	2,355	18.1	10,489	80.8	139	1.1	12,983	100.0
Kansas	1,923	18.5	8,441	81.3	21	0.2	10,385	100.0
Kentucky	1,502	17.3	7,061	81.2	133	1.5	8,696	100.0
Maine	688	21.3	2,385	73.9	153	4.7	3,226	100.0
Maryland	4,194	21.1	15,242	76.7	424	2.1	19,860	100.0
Massachusetts	7,316	21.2	23,753	68.8	3,458	10.0	34,527	100.0
Michigan	5,765	16.7	28,534	82.7	197	0.6	34,496	100.0
Minnesota	2,426	15.6	12,856	82.7	264	1.7	15,546	100.0
Mississippi	1,094	14.5	6,451	85.4	10	0.1	7,555	100.0
Missouri	2,952	22.0	10,311	77.0	127	0.9	13,390	100.0
Montana	573	20.0	2,037	71.0	259	9.0	2,869	100.0
Nevada	1,893	23.6	5,905	73.6	224	2.8	8,022	100.0
New Jersey**	8,149	21.4	29,889	78.3	130	0.3	38,168	100.0
New Mexico	1,029	18.3	4,541	80.7	54	1.0	5,624	100.0
New York City	23,584	20.6	88,766	77.4	2,350	2.0	114,700	100.0
North Carolina	7,764	22.0	25,456	72.2	2,033	5.8	35,253	100.0
North Dakota	301	20.2	1,190	79.7	2	0.1	1,493	100.0
Ohio	6,076	16.9	25,904	71.9	4,039	11.2	36,019	100.0
Oregon	2,821	22.2	9,198	72.5	666	5.3	12,685	100.0
Pennsylvania	8,577	17.5	40,437	82.5	28	0.1	49,042	100.0
Rhode Island	1,498	22.5	5,082	76.2	87	1.3	6,667	100.0
South Carolina	2,230	20.3	8,776	79.7	2	0.0	11,008	100.0
South Dakota	200	19.3	838	80.7	0	0.0	1,038	100.0
Tennessee	3,751	20.8	14,172	78.6	106	0.6	18,029	100.0
Texas	20,832	22.9	63,194	69.4	7,087	7.8	91,113	100.0
Utah	1,632	41.4	2,309	58.6	0	0.0	3,941	100.0
Vermont	629	22.6	1,994	71.8	155	5.6	2,778	100.0
Virginia	5,262	17.8	23,660	79.8	719	2.4	29,641	100.0
West Virginia	511	18.2	2,300	81.8	1	0.0	2,812	100.0
Wisconsin	2,096	14.2	12,524 <sup>††</sup>	84.8	153	1.0	14,773 <sup>¶</sup>	100.0
Wyoming	57	19.3	238	80.4	1	0.3	296	100.0
<b>Total</b>	<b>148,934</b>	<b>20.0</b>	<b>568,777</b>	<b>76.4</b>	<b>26,452</b>	<b>3.6</b>	<b>744,163</b>	<b>100.0</b>
Abortion ratio <sup>§§</sup>	84		790				289	

\*All 37 states for which data were available, the District of Columbia, and New York City; excludes two states where unknown marital status was >15%.

<sup>†</sup> Married includes married and separated.

<sup>§</sup> Unmarried includes never married, divorced, and widowed women.

<sup>¶</sup> Includes residents only.

\*\*Based on known distribution of 1991 data.

<sup>††</sup> Includes women who were reported as being separated.

<sup>§§</sup> Calculated as the number of legal abortions obtained by women of a given marital status per 1,000 live births to women of the same marital status for these states. For each state, data regarding women of unknown marital status were distributed according to the known marital status distribution for that state.

In 1992, the national abortion-to-live-birth ratio was the lowest recorded since 1977. The abortion ratio increased steadily from 1970 through 1980, decreased slightly during 1981–1983, increased to its highest level in 1984, remained fairly stable until 1987, and then began to decline (Figure 1). More pregnant women were opting to carry their pregnancies to term rather than have an abortion. Other factors that could have contributed to this effect included reduced access to abortion services, changes in contraceptive practices, attitudinal changes concerning abortion and/or carrying unplanned pregnancies to term, and the possibility that the number of unintended pregnancies have decreased (6–8).

In other countries, the annual rate for legal abortions per 1,000 women of reproductive age has ranged from >100 in the former Soviet Union to five in the Netherlands (9). The induced abortion rate in the United States for 1992 was higher than that reported by Australia, Canada, and Western European countries, and lower than that reported by China, Cuba, the Eastern European countries, and the Newly Independent States of the former Soviet Union (9). Abortion rates for teenagers were higher in the United States than in most Western European countries and some Eastern European countries (9).

As in previous years, the abortion ratio in 1992 varied substantially by age (3,4). Although the ratio was highest for teenagers, the percentage of legal abortions obtained by women  $\leq 19$  years of age has decreased steadily since the mid-1980s—from 26% in 1984 to 22% in 1990 and to 20% in 1992 (4,10). Since 1980, the abortion ratio declined for most age groups—particularly for women  $\leq 19$  years of age and  $\geq 40$  years of age. In 1992, the abortion ratio for teenagers 15–19 years of age was the lowest ratio CDC had ever recorded for that age group. Variations in rates of childbearing among teenagers may have accounted for some of the decline in abortion ratios for these women (5), as well as changing access to abortion services (7), recent changes in abortion laws (e.g., parental consent or notification laws and mandatory waiting periods)—all of which are likely to disproportionately affect adolescents (11,12).

During 1992, the abortion ratio for black women was more than twice that for white women, and the abortion rate for black women was about three times that for white women. Race-specific differences in abortion ratios and rates may reflect differences in factors such as socioeconomic status, contraceptive use, and access to family planning, contraceptive, and abortion services.

The abortion-to-live-birth ratio for Hispanic women during 1992 was slightly lower than that for non-Hispanic women. Other published reports indicate that pregnant Hispanic women are less likely than pregnant non-Hispanic women to obtain an abortion (13). The abortion rate per 1,000 Hispanic women was higher than that for non-Hispanic women. Other studies using previously published data also reported higher abortion rates for Hispanic women than for non-Hispanic women (13). For women in all age groups, fertility was higher for Hispanic than for non-Hispanic women (5). However, in 1992, as in 1991, only 20 states, the District of Columbia, and New York City reported the number and percentage of abortions by Hispanic ethnicity; these geographic areas represented approximately 43% of all Hispanic women of reproductive age in the United States for that year (CDC, unpublished data). Thus, the number, ratio, and rate of abortions for Hispanic women reported in this surveillance summary might not be representative of the overall Hispanic population in the United States (i.e., these data might reflect utilization of abortion services only in these states).

**TABLE 11. Reported legal abortions, by number of previous live births and state in which the procedure was performed — selected states,\* United States, 1992**

State	No. of previous live births												Total	
	0		1		2		3		≥4		Unknown			
	No.	%	No.	%	No.	%	No.	%	No.	%	No.	%	No.	%
Alabama	6,544	49.0	3,558	26.6	2,260	16.9	686	5.1	282	2.1	28	0.2	13,358	100.0
Arizona	6,624	46.2	3,470	24.2	2,597	18.1	1,116	7.8	357	2.5	189	1.3	14,353	100.0
Arkansas	2,558	45.1	1,626	28.7	974	17.2	364	6.4	138	2.4	15	0.3	5,675	100.0
Colorado	5,934	55.9	2,204	20.8	1,622	15.3	543	5.1	245	2.3	59	0.6	10,607	100.0
Georgia	18,281	48.0	10,307	27.1	6,452	17.0	2,039	5.4	892	2.3	81	0.2	38,052	100.0
Hawaii	2,923	49.1	1,393	23.4	1,007	16.9	417	7.0	188	3.2	26	0.4	5,954	100.0
Idaho	618	44.8	329	23.9	257	18.7	107	7.8	67	4.9	0	0.0	1,378	100.0
Indiana	6,049	46.6	3,257	25.1	2,398	18.5	874	6.7	312	2.4	93	0.7	12,983	100.0
Kansas†	5,493	52.9	2,424	23.3	1,626	15.7	580	5.6	217	2.1	45	0.4	10,385	100.0
Kentucky	4,547	52.3	2,118	24.4	1,272	14.6	477	5.5	153	1.8	129	1.5	8,696	100.0
Maine	1,534	47.6	703	21.8	537	16.6	157	4.9	60	1.9	235	7.3	3,226	100.0
Maryland	9,170	46.2	5,469	27.5	3,467	17.5	1,222	6.2	532	2.7	0	0.0	19,860	100.0
Michigan	16,301	47.3	8,591	24.9	6,285	18.2	2,273	6.6	981	2.8	65	0.2	34,496	100.0
Minnesota	8,440	54.3	3,146	20.2	2,453	15.8	934	6.0	518	3.3	55	0.4	15,546	100.0
Mississippi	3,439	45.5	2,101	27.8	1,358	18.0	428	5.7	222	2.9	7	0.1	7,555	100.0
Missouri	5,854	43.7	3,511	26.2	2,561	19.1	1,008	7.5	456	3.4	0	0.0	13,390	100.0
Montana	1,544	53.8	594	20.7	453	15.8	183	6.4	95	3.3	0	0.0	2,869	100.0
Nebraska	3,091	54.8	1,071	19.0	886	15.7	407	7.2	182	3.2	0	0.0	5,637	100.0
Nevada	3,386	42.2	2,163	27.0	1,483	18.5	564	7.0	257	3.2	169	2.1	8,022	100.0
New Jersey§	14,793	38.8	10,915	28.6	7,893	20.7	2,963	7.8	1,349	3.5	255	0.7	38,168	100.0
New Mexico	2,737	48.7	1,426	25.4	964	17.1	333	5.9	150	2.7	14	0.2	5,624	100.0
New York	60,217	36.7	43,742	26.6	33,075	20.1	13,628	8.3	9,847	6.0	3,765	2.3	164,274	100.0
City	37,364	32.6	33,245	29.0	25,109	21.9	10,576	9.2	8,404	7.3	2	0.0	114,700	100.0
State	22,853	46.1	10,497	21.2	7,966	16.1	3,052	6.2	1,443	2.9	3,763	7.6	49,574	100.0
North Carolina	17,025	48.3	8,874	25.2	5,217	14.8	1,634	4.6	653	1.9	1,850	5.2	35,253	100.0
North Dakota	865	57.9	263	17.6	224	15.0	97	6.5	44	2.9	0	0.0	1,493	100.0
Ohio†	18,311	50.8	8,596	23.9	6,071	16.9	2,127	5.9	908	2.5	6	0.0	36,019	100.0
Oregon	6,077	47.9	3,004	23.7	2,206	17.4	716	5.6	354	2.8	328	2.6	12,685	100.0
Pennsylvania	23,534	48.0	12,681	25.9	8,388	17.1	2,964	6.0	1,445	2.9	30	0.1	49,042	100.0
Rhode Island†	3,384	50.8	1,552	23.3	1,134	17.0	408	6.1	183	2.7	6	0.1	6,667	100.0

**TABLE 11. Reported legal abortions, by number of previous live births and state in which the procedure was performed — selected states,\* United States, 1992 — Continued**

State	No. of previous live births												Total	
	0		1		2		3		≥4		Unknown			
	No.	%	No.	%	No.	%	No.	%	No.	%	No.	%	No.	%
South Carolina	5,259	47.8	3,055	27.8	1,878	17.1	580	5.3	236	2.1	0	0.0	11,008	100.0
South Dakota <sup>†</sup>	575	55.4	169	16.3	182	17.5	72	6.9	40	3.9	0	0.0	1,038	100.0
Tennessee	8,245	45.7	5,123	28.4	2,973	16.5	1,048	5.8	623	3.5	17	0.1	18,029	100.0
Texas	43,809	48.1	22,732	24.9	15,634	17.2	5,858	6.4	2,983	3.3	97	0.1	91,113	100.0
Utah	1,826	46.3	956	24.3	700	17.8	290	7.4	161	4.1	8	0.2	3,941	100.0
Vermont	1,616	58.2	535	19.3	454	16.3	111	4.0	62	2.2	0	0.0	2,778	100.0
Virginia	14,881	50.2	7,496	25.3	4,721	15.9	1,569	5.3	679	2.3	295	1.0	29,641	100.0
Washington	12,827	46.5	6,900	25.0	4,960	18.0	1,917	7.0	833	3.0	136	0.5	27,573	100.0
West Virginia	1,372	48.8	774	27.5	470	16.7	142	5.0	48	1.7	6	0.2	2,812	100.0
Wyoming	138	46.6	84	28.4	41	13.9	22	7.4	11	3.7	0	0.0	296	100.0
<b>Total</b>	<b>349,821</b>	<b>45.5</b>	<b>196,912</b>	<b>25.6</b>	<b>137,133</b>	<b>17.8</b>	<b>50,858</b>	<b>6.6</b>	<b>26,763</b>	<b>3.5</b>	<b>8,009</b>	<b>1.0</b>	<b>769,496</b>	<b>100.0</b>
Abortion ratio <sup>¶</sup>	327		229		319		308		255				289	

\* All 38 states for which data were available and New York City; excludes one state where the unknown number of previous live births was >15%.

<sup>†</sup> Number of living children.

<sup>§</sup> Based on known distribution of 1991 data.

<sup>¶</sup> Calculated as the number of legal abortions obtained by women who had a given number of previous live births per 1,000 live births to women with the same number of previous live births for these states. For each state, women whose number of previous live births was unknown were distributed according to the known number of previous live births for that state.

**TABLE 12. Reported legal abortions, by number of previous induced legal abortions and state in which the procedure was performed — selected states,\* United States, 1992**

State	No. of previous induced abortions										Total	
	0		1		2		≥3		Unknown			
	No.	%	No.	%	No.	%	No.	%	No.	%	No.	%
Alabama	8,786	65.8	3,373	25.3	798	6.0	363	2.7	38	0.3	13,358	100.0
Arizona	8,809	61.4	3,791	26.4	1,211	8.4	327	2.3	215	1.5	14,353	100.0
Arkansas	3,722	65.6	1,475	26.0	339	6.0	124	2.2	15	0.3	5,675	100.0
Colorado	6,735	63.5	2,573	24.3	832	7.8	376	3.5	91	0.9	10,607	100.0
Dist. of Columbia	2,551	31.3	2,875	35.3	1,524	18.7	806	9.9	395	4.8	8,151 <sup>†</sup>	100.0
Georgia	21,673	57.0	10,675	28.1	3,793	10.0	1,693	4.4	218	0.6	38,052	100.0
Hawaii	3,096	52.0	1,569	26.4	754	12.7	481	8.1	54	0.9	5,954	100.0
Idaho	964	70.0	291	21.1	87	6.3	35	2.5	1	0.1	1,378	100.0
Indiana	8,722	67.2	2,868	22.1	892	6.9	403	3.1	98	0.8	12,983	100.0
Kansas	6,677	64.3	2,410	23.2	734	7.1	301	2.9	263	2.5	10,385	100.0
Kentucky	5,671	65.2	2,015	23.2	530	6.1	217	2.5	263	3.0	8,696	100.0
Maine	1,989	61.7	786	24.4	218	6.8	103	3.2	130	4.0	3,226	100.0
Maryland	9,002	45.3	6,215	31.3	3,015	15.2	1,628	8.2	0	0.0	19,860	100.0
Michigan	19,237	55.8	9,089	26.3	3,733	10.8	2,148	6.2	289	0.8	34,496	100.0
Minnesota	9,501	61.1	3,925	25.2	1,377	8.9	693	4.5	50	0.3	15,546	100.0
Mississippi	4,973	65.8	1,802	23.9	530	7.0	243	3.2	7	0.1	7,555	100.0
Missouri	7,922	59.2	3,742	27.9	1,155	8.6	571	4.3	0	0.0	13,390	100.0
Montana	1,933	67.4	664	23.1	190	6.6	82	2.9	0	0.0	2,869	100.0
Nebraska	3,573	63.4	1,338	23.7	437	7.8	273	4.8	16	0.3	5,637	100.0
Nevada	3,810	47.5	2,162	27.0	988	12.3	724	9.0	338	4.2	8,022	100.0
New Jersey <sup>§</sup>	16,657	43.6	11,679	30.6	5,558	14.6	3,781	9.9	493	1.3	38,168	100.0
New Mexico	3,636	64.7	1,354	24.1	387	6.9	227	4.0	20	0.4	5,624	100.0
New York	67,696	41.2	44,917	27.3	24,674	15.0	18,535	11.3	8,452	5.1	164,274	100.0
City	42,054	36.7	33,324	29.1	20,172	17.6	16,237	14.2	2,913	2.5	114,700	100.0
State	25,642	51.7	11,593	23.4	4,502	9.1	2,298	4.6	5,539	11.2	49,574	100.0
North Carolina	21,915	62.2	8,798	25.0	2,591	7.3	1,023	2.9	926	2.6	35,253	100.0
North Dakota	1,066	71.4	313	21.0	85	5.7	29	1.9	0	0.0	1,493	100.0
Oregon	6,813	53.7	3,589	28.3	1,351	10.7	736	5.8	196	1.5	12,685	100.0
Pennsylvania	28,841	58.8	13,178	26.9	4,577	9.3	2,410	4.9	36	0.1	49,042	100.0
Rhode Island	3,783	56.7	1,792	26.9	704	10.6	369	5.5	19	0.3	6,667	100.0

**TABLE 12. Reported legal abortions, by number of previous induced legal abortions and state in which the procedure was performed — selected states,<sup>\*</sup> United States, 1992 — Continued**

State	No. of previous induced abortions										Total	
	0		1		2		≥3		Unknown			
	No.	%	No.	%	No.	%	No.	%	No.	%	No.	%
South Carolina	7,022	63.8	2,832	25.7	818	7.4	335	3.0	1	0.0	11,008	100.0
South Dakota	889	85.6	120	11.6	21	2.0	8	0.8	0	0.0	1,038	100.0
Tennessee	11,532	64.0	4,482	24.9	1,354	7.5	651	3.6	10	0.1	18,029	100.0
Texas	55,122	60.5	24,408	26.8	7,827	8.6	3,586	3.9	170	0.2	91,113	100.0
Utah	2,440	61.9	978	24.8	338	8.6	174	4.4	11	0.3	3,941	100.0
Vermont	1,697	61.1	694	25.0	249	9.0	138	5.0	0	0.0	2,778	100.0
Virginia	16,883	57.0	8,400	28.3	2,743	9.3	1,254	4.2	361	1.2	29,641	100.0
Washington	14,232	51.6	7,767	28.2	3,209	11.6	2,220	8.1	145	0.5	27,573	100.0
West Virginia	1,823	64.8	662	23.5	188	6.7	85	3.0	54	1.9	2,812	100.0
Wyoming	201	67.9	66	22.3	22	7.4	7	2.4	0	0.0	296	100.0
<b>Total</b>	<b>401,594</b>	<b>54.2</b>	<b>199,667</b>	<b>26.9</b>	<b>79,833</b>	<b>10.8</b>	<b>47,159</b>	<b>6.4</b>	<b>13,375</b>	<b>1.8</b>	<b>741,628</b>	<b>100.0</b>

\* All 37 states for which data were available, the District of Columbia, and New York City; excludes two states where the unknown number of previous induced abortions was >15%.

† Includes residents only.

§ Based on known distribution of 1991 data.



**TABLE 13. Reported legal abortions, by race, age group, and marital status of women who obtained abortions — United States, 1992**

Age group (yrs)/ Marital status*	Race				Total	
	White†		Black/Other		No.	%
	No.	%	No.	%		
<b>Age group</b>						
<15	2,512	0.6	3,093	1.2	5,605	0.8
15-19	81,331	19.8	47,094	18.8	128,425	19.4
20-24	141,370	34.4	86,887	34.6	228,257	34.5
25-29	88,307	21.5	59,367	23.6	147,674	22.3
30-34	57,091	13.9	34,350	13.7	91,441	13.8
35-39	31,193	7.6	16,184	6.4	47,377	7.2
≥40	9,414	2.3	4,162	1.7	13,576	2.0
<b>Total§</b>	<b>411,218</b>	<b>100.0</b>	<b>251,137</b>	<b>100.0</b>	<b>662,355</b>	<b>100.0</b>
<b>Marital status</b>						
Married	83,122	22.9	41,051	17.8	124,173	20.9
Unmarried	280,360	77.1	189,277	82.2	469,637	79.1
<b>Total¶</b>	<b>363,482</b>	<b>100.0</b>	<b>230,328</b>	<b>100.0</b>	<b>593,810</b>	<b>100.0</b>

\*Excludes unknowns.

†Includes Hispanic.

§Reported by 34 states and New York City.

¶Reported by 32 states and New York City.

**TABLE 14. Reported legal abortions, by Hispanic ethnicity, age group, and marital status of women who obtained abortions — United States, 1992**

Age group (yrs)/ Marital status*	Hispanic ethnicity				Total	
	Hispanic		Non-Hispanic		No.	%
	No.	%	No.	%		
<b>Age group</b>						
<15	479	0.7	3,163	0.8	3,642	0.8
15-19	13,191	18.0	74,961	19.0	88,152	18.9
20-24	25,332	34.6	135,175	34.3	160,507	34.4
25-29	17,554	23.9	87,867	22.3	105,421	22.6
30-34	10,368	14.1	55,093	14.0	65,461	14.0
35-39	4,950	6.8	28,856	7.3	33,806	7.2
≥40	1,432	2.0	8,506	2.2	9,938	2.1
<b>Total</b>	<b>73,306</b>	<b>100.0</b>	<b>393,621</b>	<b>100.0</b>	<b>466,927</b>	<b>100.0</b>
<b>Marital status</b>						
Married	17,770	25.3	72,561	20.1	90,331	21.0
Unmarried	52,502	74.7	288,330	79.9	340,832	79.0
<b>Total</b>	<b>70,272</b>	<b>100.0</b>	<b>360,891</b>	<b>100.0</b>	<b>431,163</b>	<b>100.0</b>

\*Excludes unknowns. Reported by 19 states and New York City.

**TABLE 15A. Reported legal abortions by weeks of gestation and by age group, race, and Hispanic ethnicity of women who obtained abortions — United States, 1992**

Age group (yrs)/ Race/Hispanic ethnicity*	Weeks of gestation												Total	
	≤8		9–10		11–12		13–15		16–20		≥21		No.	%
	No.	%	No.	%	No.	%	No.	%	No.	%	No.	%		
<b>Age group</b>														
<15	2,074	34.7	1,477	24.7	915	15.3	679	11.4	590	9.9	243	4.1	5,978	100.0
15–19	59,743	43.1	35,581	25.6	20,207	14.6	11,654	8.4	8,416	6.1	3,152	2.3	138,753	100.0
20–24	123,701	50.6	60,973	24.9	30,865	12.6	15,343	6.3	10,068	4.1	3,657	1.5	244,607	100.0
25–29	87,792	55.7	37,126	23.5	17,340	11.0	7,980	5.1	5,568	3.5	1,863	1.2	157,669	100.0
30–34	57,493	58.5	22,320	22.7	9,905	10.1	4,377	4.5	3,148	3.2	1,115	1.1	98,358	100.0
35–39	30,841	60.3	11,306	22.1	4,694	9.2	2,070	4.0	1,753	3.4	523	1.0	51,187	100.0
≥40	9,026	61.8	2,993	20.5	1,289	8.8	552	3.8	570	3.9	180	1.2	14,610	100.0
<b>Total†</b>	<b>370,670</b>	<b>52.1</b>	<b>171,776</b>	<b>24.2</b>	<b>85,215</b>	<b>12.0</b>	<b>42,655</b>	<b>6.0</b>	<b>30,113</b>	<b>4.2</b>	<b>10,733</b>	<b>1.5</b>	<b>711,162</b>	<b>100.0</b>
<b>Race</b>														
White	217,238	54.9	94,016	23.8	44,209	11.2	20,594	5.2	14,417	3.6	5,199	1.3	395,673	100.0
Black	97,901	45.1	55,857	25.7	30,895	14.2	16,524	7.6	11,677	5.4	4,268	2.0	217,122	100.0
Other	17,129	57.7	6,236	21.0	3,295	11.1	1,354	4.6	1,083	3.6	591	2.0	29,688	100.0
<b>Total§</b>	<b>332,268</b>	<b>51.7</b>	<b>156,109</b>	<b>24.3</b>	<b>78,399</b>	<b>12.2</b>	<b>38,472</b>	<b>6.0</b>	<b>27,177</b>	<b>4.2</b>	<b>10,058</b>	<b>1.6</b>	<b>642,483</b>	<b>100.0</b>
<b>Hispanic ethnicity</b>														
Hispanic	36,969	52.7	15,883	22.6	8,505	12.1	4,235	6.0	3,498	5.0	1,068	1.5	70,158	100.0
Non-Hispanic	201,709	51.3	93,579	23.8	48,566	12.3	24,571	6.2	17,568	4.5	7,309	1.9	393,302	100.0
<b>Total¶</b>	<b>238,678</b>	<b>51.5</b>	<b>109,462</b>	<b>23.6</b>	<b>57,071</b>	<b>12.3</b>	<b>28,806</b>	<b>6.2</b>	<b>21,066</b>	<b>4.5</b>	<b>8,377</b>	<b>1.8</b>	<b>463,460</b>	<b>100.0</b>

\* Excludes unknowns.

† Reported by 36 states and New York City.

§ Reported by 33 states and New York City.

¶ Reported by 19 states and New York City.

**TABLE 15B. Reported legal abortions obtained at  $\leq 8$  weeks of gestation,\* by weeks of gestation, and total number of abortions, by age group, race, and Hispanic ethnicity of women who obtained abortions — United States, 1992**

Age group (yrs)/ Race/Hispanic ethnicity <sup>†</sup>	Weeks of gestation						Total abortions obtained		
	$\leq 6$		7		8		$\leq 8$ wks of gestation		No. obtained at all weeks of gestation
	No.	%	No.	%	No.	%	No.	%	
<b>Age group</b>									
<15	561	9.4	543	9.1	970	16.2	2,074	34.7	5,978
15–19	14,397	10.4	17,383	12.5	27,963	20.2	59,743	43.1	138,753
20–24	32,288	13.2	36,748	15.0	54,665	22.3	123,701	50.6	244,607
25–29	24,662	15.6	26,371	16.7	36,759	23.3	87,792	55.7	157,669
30–34	16,928	17.2	17,260	17.5	23,305	23.7	57,493	58.5	98,358
35–39	9,092	17.8	9,307	18.2	12,442	24.3	30,841	60.3	51,187
$\geq 40$	2,847	19.5	2,686	18.4	3,493	23.9	9,026	61.8	14,610
<b>Total<sup>§</sup></b>	<b>100,775</b>	<b>14.2</b>	<b>110,298</b>	<b>15.5</b>	<b>159,597</b>	<b>22.4</b>	<b>370,670</b>	<b>52.1</b>	<b>711,162</b>
<b>Race</b>									
White	56,608	14.3	65,285	16.5	95,345	24.1	217,238	54.9	395,673
Black	24,658	11.4	27,324	12.6	45,919	21.1	97,901	45.1	217,122
Other	4,600	15.5	4,551	15.3	7,978	26.9	17,129	57.7	29,688
<b>Total<sup>¶</sup></b>	<b>85,866</b>	<b>13.4</b>	<b>97,160</b>	<b>15.1</b>	<b>149,242</b>	<b>23.2</b>	<b>332,268</b>	<b>51.7</b>	<b>642,483</b>
<b>Hispanic ethnicity</b>									
Hispanic	9,037	12.9	10,738	15.3	17,194	24.5	36,969	52.7	70,158
Non-Hispanic	50,881	12.9	59,621	15.2	91,207	23.2	201,709	51.3	393,302
<b>Total<sup>**</sup></b>	<b>59,918</b>	<b>12.9</b>	<b>70,359</b>	<b>15.2</b>	<b>108,401</b>	<b>23.4</b>	<b>238,678</b>	<b>51.5</b>	<b>463,460</b>

\* Percentages are calculated using total number of abortions obtained at all weeks of gestation.

<sup>†</sup> Excludes unknowns.

<sup>§</sup> Reported by 34 states and New York City.

<sup>¶</sup> Reported by 31 states and New York City.

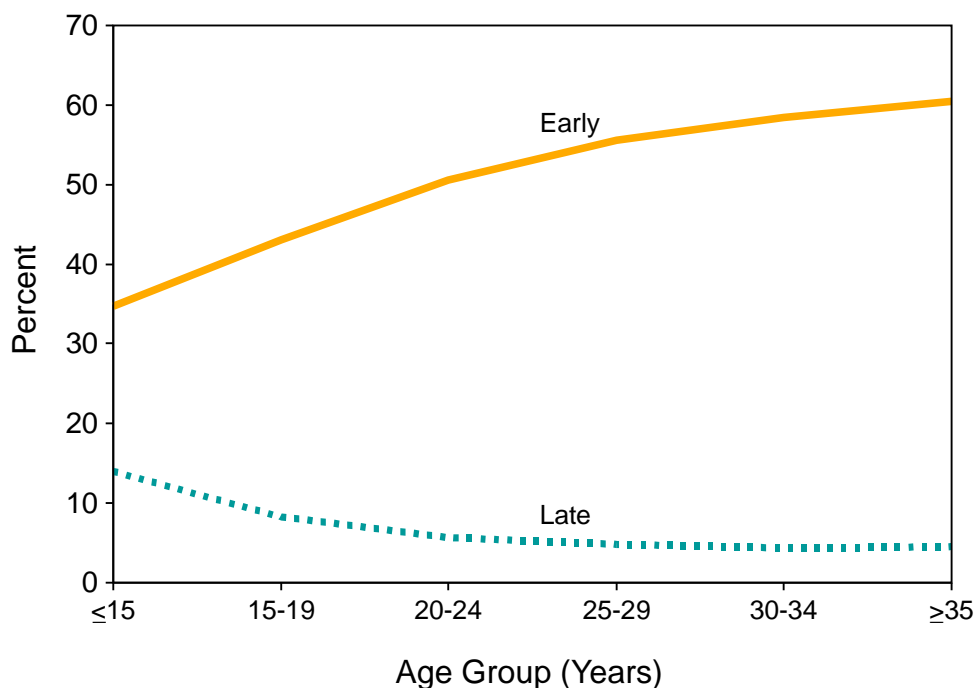
\*\* Reported by 17 states and New York City.

The percentage distribution of abortions by gestational age was stable from 1980 through 1992 (Table 1). For the first time since CDC began abortion surveillance, data concerning week of gestation for abortions obtained at  $\leq 8$  weeks of gestation were available. These data will assist researchers in monitoring trends in legal abortions as new medical methods of terminating pregnancy are developed; these new methods will be used primarily to terminate pregnancies at  $\leq 8$  weeks of gestation (14–16).

In this and previous reports, age was inversely associated with timing of abortion. Younger women (i.e., women  $\leq 19$  years of age) were more likely to obtain an abortion later in gestation than were older women (3,17,18).

The percentage of women who were obtaining an abortion for the first time decreased from 75% in 1974 to 54% in 1992 (Table 12) (19). During this period, the percentage of women who were obtaining an abortion and who previously had had one induced abortion increased from 10% in 1974 to 25% in 1985 and to 27% in 1992 (10). The percentage who had had two previous abortions increased from approximately 1% in 1974 to approximately 10% in 1985; from 1985 through 1992, the percentage remained at approximately 9%–11%. The percentage who had had three or more abortions increased from 0.4% in 1974 to approximately 5% in 1985; from 1990 through 1992, this percentage remained at 6%. Because the percentage of all legal induced abortions that are repeat procedures increases with the abortion rate, the percentage of repeat procedures increased during the 1970s and early 1980s as the abortion rate rose; since then, the abortion rate and the proportion of abortions that are repeat procedures have stabilized (20,21).

**FIGURE 5. Percentage of women who obtained early\* or late† abortions, by age group of women — United States, 1992**



\* $\leq 8$  weeks of gestation.

† $\geq 16$  weeks of gestation.

**TABLE 16. Reported legal abortions, by weeks of gestation and type of procedure\* — United States, 1992**

Type of procedure	Weeks of gestation												Total	
	≤8		9-10		11-12		13-15		16-20		≥21		No.	%
	No.	%	No.	%	No.	%	No.	%	No.	%	No.	%		
Curettage (suction or sharp) <sup>†</sup>	362,453	99.9	166,815	99.9	82,911	99.6	40,740	98.2	25,180	86.0	8,505	86.4	686,604	99.0
Intrauterine saline instillation	43	0.0 <sup>§</sup>	32	0.0 <sup>§</sup>	53	0.1	200	0.5	1,324	4.5	422	4.3	2,074	0.3
Intrauterine prostaglandin instillation	22	0.0 <sup>§</sup>	19	0.0 <sup>§</sup>	36	0.0 <sup>§</sup>	199	0.5	1,273	4.3	469	4.8	2,018	0.3
Hysterotomy/ Hysterectomy	11	0.0 <sup>§</sup>	7	0.0 <sup>§</sup>	3	0.0 <sup>§</sup>	3	0.0 <sup>§</sup>	11	0.0 <sup>§</sup>	6	0.1	41	0.0 <sup>§</sup>
Other <sup>¶</sup>	282	0.1	70	0.0 <sup>§</sup>	211	0.3	325	0.8	1,495	5.1	437	4.4	2,820	0.4
<b>Total**</b>	<b>362,811</b>	<b>100.0</b>	<b>166,943</b>	<b>100.0</b>	<b>83,214</b>	<b>100.0</b>	<b>41,467</b>	<b>100.0</b>	<b>29,283</b>	<b>100.0</b>	<b>9,839</b>	<b>100.0</b>	<b>693,557</b>	<b>100.0</b>

\*Excludes unknowns.

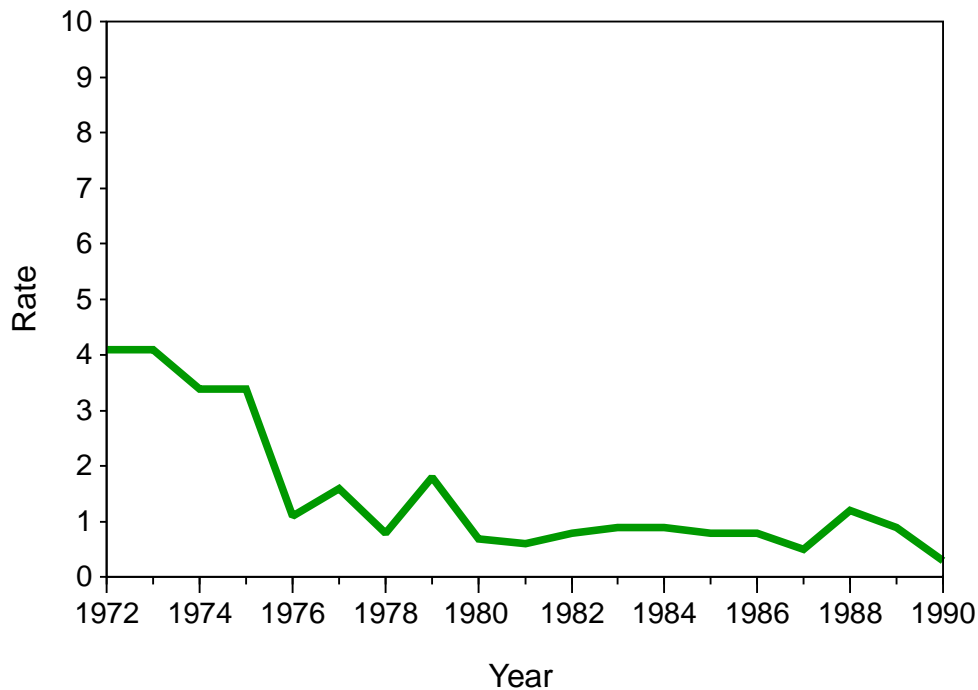
<sup>†</sup> Includes dilatation and evacuation.<sup>§</sup> ≤0.05%.<sup>¶</sup> Includes instillation procedures not reported as a specific category.

\*\* Reported by 35 states and New York City.

**TABLE 17. Number and case-fatality rates\* of abortion-related deaths reported to CDC, by type of abortion — United States, 1972–1990**

Year	Type of abortion				Total no. of deaths	Case-fatality rate
	Induced		Spontaneous	Unknown		
	Legal	Illegal				
1972	24	39	25	2	90	4.1
1973	25	19	10	3	57	4.1
1974	26	6	21	1	54	3.4
1975	29	4	14	1	48	3.4
1976	11	2	13	1	27	1.1
1977	17	4	16	0	37	1.6
1978	9	7	9	0	25	0.8
1979	22	0	10	0	32	1.8
1980	9	1	7	2	19	0.7
1981	8	1	3	0	12	0.6
1982	11	1	6	0	18	0.8
1983	11	1	7	0	19	0.9
1984	12	0	6	0	18	0.9
1985	11	1	8	1	21	0.8
1986	11	0	5	2	18	0.8
1987	7	2	8	0	17	0.5
1988	16	0	8	0	24	1.2
1989	12	1	4	0	17	0.9
1990	5	0	5	0	10	0.3
<b>Total</b>	<b>276</b>	<b>89</b>	<b>185</b>	<b>13</b>	<b>563</b>	<b>1.3</b>

\*Legal induced abortion-related deaths per 100,000 legal induced abortions.

**FIGURE 6. Case-fatality rates\* for legal induced abortions, by year — United States, 1972–1990**

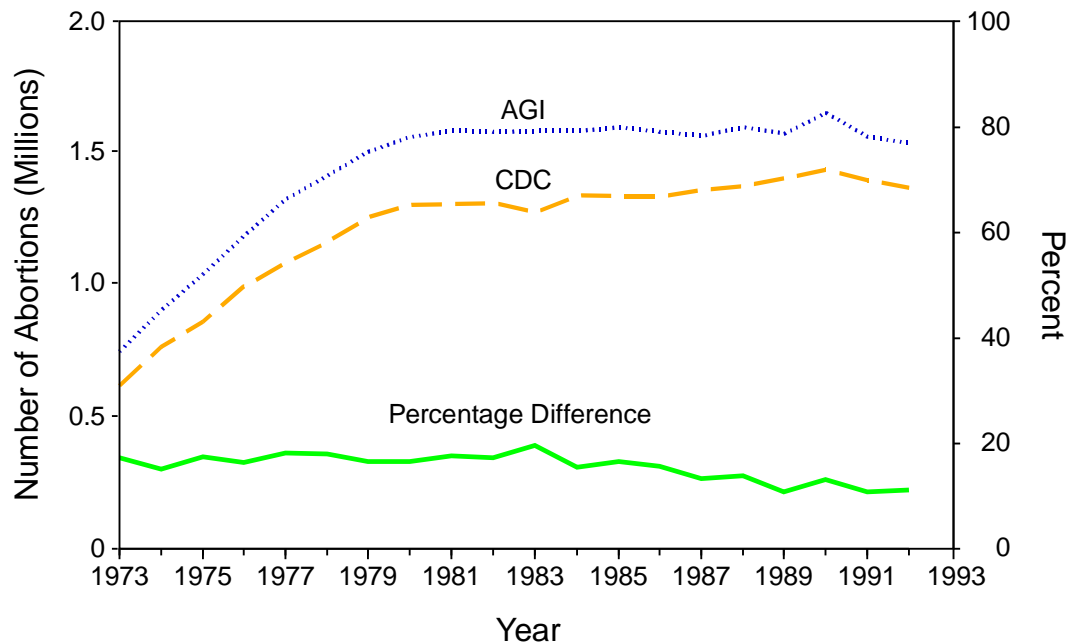
\*Number of legal induced abortion-related deaths per 100,000 legal induced abortions.

From 1972 to 1992, the percentage of abortions performed by curettage (which includes D&E) increased from 89% to 99% (Table 1), and the percentage of abortions performed by intrauterine instillation and by hysterectomy and hysterotomy declined substantially (from 10.4% to 0.7% and from 0.6% to 0.01%, respectively). From 1974 through 1992, the percentage of second-trimester abortions performed by D&E increased from 31% to 90%; the percentage of second-trimester abortions performed by intrauterine instillation decreased from 57% to 3% (19). The increasing use of D&E might have resulted from the lower risk for complications associated with the procedure (22,23).

From 1972 (when CDC's surveillance of abortion mortality began) through 1990, the annual number of reported deaths associated with legal induced abortion decreased 79% (24). In 1972, 63 reported deaths were attributed to complications of induced abortion. Of these deaths, 24 (38%) were associated with legal induced abortion and 39 (62%) with illegal induced abortion. In 1990, five deaths attributed to legal induced abortion were reported. The case-fatality rate decreased approximately 93% between 1972 (4.1 deaths per 100,000 legal induced abortions) and 1990 (0.3 deaths per 100,000 legal induced abortions) (Figure 6). These case-fatality rates have remained at one or fewer deaths per 100,000 legal induced abortions since 1980, indicating that a woman's risk for death from having had a legal induced abortion continues to be extremely low (25-27).

The numbers, ratios, and rates of abortion from this analysis are conservative estimates because the number of legal abortions reported to CDC for 1992 was probably lower than the number actually performed. Totals provided by central health agencies

**FIGURE 7. Number of legal induced abortions and the percentage difference in the numbers reported to CDC and The Alan Guttmacher Institute (AGI)\* — United States, 1973-1992**



\* A private organization that directly contacts abortion providers to obtain information on the number of abortions performed (7). No AGI surveys were conducted in 1983, 1986, 1989, and 1990; AGI used interpolation to estimate numbers for those years.

are often lower than those obtained by direct surveys of abortion providers (24). For example, the total number of abortions reported to CDC for 1992 was approximately 11% lower than that reported to The Alan Guttmacher Institute (AGI), a private organization that directly contacts abortion providers to obtain information on the number of abortions performed (Figure 7) (8). However, since 1987, the percentage difference in the number of abortions reported to AGI compared with the number reported to CDC has decreased. In addition, information regarding personal characteristics (e.g., gestational age and the woman's age and race) was not available from all states; therefore, the numbers, percentages, ratios, and rates derived from this analysis may not be representative of all women who obtained abortions during 1992.

Despite these limitations, findings from ongoing national surveillance of legal induced abortion are used for several purposes. First, data from abortion surveillance are used to identify characteristics of women at high risk for unintended pregnancy. Second, ongoing annual surveillance is essential to monitor trends in the number, ratio, and rate of abortions in the United States. Third, statistics on the number of pregnancies ending in abortion are used in conjunction with birth statistics to estimate pregnancy rates (e.g., pregnancy rates among teenagers) (28,29) and other outcome rates (e.g., the rate of ectopic pregnancies per 1,000 pregnancies). Fourth, abortion and pregnancy rates can be used to evaluate the effectiveness of family planning services and programs for preventing unintended pregnancy. Fifth, ongoing surveillance provides data for assessing changes in clinical practice patterns related to abortion (e.g., changes in the types of procedures used). Finally, these data are used as the denominator in calculating abortion morbidity and mortality rates.

Induced abortions are linked usually to unintended pregnancies, which often occur despite use of contraception (13,30,31). In the late 1980s, about 1.2 million live births occurred for which the pregnancy was unintended (i.e., either mistimed or unwanted at conception) (32). Improved contraceptive practices, as well as access to and education regarding safe, effective, and low-cost contraception and family planning services, can help minimize the frequency of abortion in the United States (33).

Not all states have acknowledged the need for state-based surveillance of induced abortion, and some states that have recognized the need have been unable to gather such information. Moreover, many states emphasize the prevention of unintended pregnancy, particularly among teenagers. To help guide this effort, however, an ongoing, accurate assessment of induced abortion is needed to determine the number and characteristics of women who obtain these procedures.

Additional statistical and epidemiologic information about legal induced abortions is available from CDC's automated Reproductive Health Information System (telephone [404] 330-1230), which provides information by fax, voice recordings, or mail.

#### References

1. Spitz AM, Velebil P, Koonin LM, et al. Pregnancy, abortion, and birth rates among US adolescents—1980, 1985, and 1990. *JAMA* 1996;275:989-94.
2. Koonin LM, Smith JC, Ramick M, Lawson HW. Abortion surveillance—United States, 1989. In: CDC surveillance summaries, September 1992. *MMWR* 1992;41(No. SS-5):1-33.
3. Koonin LM, Smith JC, Ramick M. Abortion surveillance—United States, 1991. In: CDC surveillance summaries, May 1995. *MMWR* 1995;44(No. SS-2):23-53.
4. Koonin LM, Smith JC, Ramick M. Abortion surveillance—United States, 1990. In: CDC surveillance summaries, December 1993. *MMWR* 1993;42(No. SS-6):29-57.
5. National Center for Health Statistics. Advance report of final natality statistics, 1992. Hyattsville, MD: US Department of Health and Human Services, Public Health Service, CDC, 1994; DHHS publication no. (PHS)95-1120. (Monthly vital statistics report; vol 43[suppl]).



6. Council on Scientific Affairs. Induced termination of pregnancy before and after Roe v. Wade. *JAMA* 1992;268:3231-9.
7. Henshaw SK. The accessibility of abortion services in the United States. *Fam Plann Perspect* 1991;23:246-52.
8. Henshaw SK, VanVort J. Abortion services in the United States, 1991 and 1992. *Fam Plann Perspect* 1994;26:100-12.
9. Henshaw SK. Induced abortions: a world review, 1990. *Fam Plann Perspect* 1990;22:76-89.
10. Lawson HW, Atrash HK, Saftlas AF, Koonin LM, Ramick M, Smith JC. Abortion surveillance: United States, 1984-1985. In: CDC surveillance summaries, September 1989. *MMWR* 1989;38(No. SS-2):11-45.
11. Benshoof J. Beyond Roe, after Casey: the present and future of a "fundamental" right. *Women's Health Issues* 1993;3:162-70.
12. Donovan P. Our daughters' decisions. New York: The Alan Guttmacher Institute, 1992.
13. Henshaw SK, Silverman J. The characteristics and prior contraceptive use of U.S. abortion patients. *Fam Plann Perspect* 1988;20:158-68.
14. Peyron R, Aubeny E, Targosz V, et al. Termination of pregnancy with mifepristone (RU 486) and the orally active prostaglandin misoprostol. *N Engl J Med* 1993;328:1509-13.
15. Winikoff B. Acceptability of medical abortion in early pregnancy. *Fam Plann Perspect* 1995;27:142-8, 185.
16. Hausknecht RU. Methotrexate and misoprostol to terminate early pregnancy. *N Engl J Med* 1995;333:537-40.
17. Fielding WL, Sachtleben MR, Friedman LM, Friedman EA. Comparison of women seeking early and late abortion. *Am J Obstet Gynecol* 1978;131:304-10.
18. Tietze C, Henshaw SK. Induced abortion: a world review. 6th ed. New York: The Alan Guttmacher Institute, 1986.
19. CDC. Abortion surveillance 1974. Atlanta: US Department of Health and Human Services, Public Health Service, CDC, 1976:1-49.
20. Tietze C, Jain A. The mathematics of repeat abortion: explaining the increase. *Stud Fam Plann* 1978;9:294-9.
21. Tietze C, Bougaarts J. Repeat abortion in the United States: new insights. *Stud Fam Plann* 1982;13:373-9.
22. Cates W Jr, Schulz KF, Grimes DA, et al. Dilatation and evacuation procedures and second-trimester abortion: the role of physician skill and hospital setting. *JAMA* 1982;248:559-63.
23. Grimes DA. Second-trimester abortions in the United States. *Fam Plann Perspect* 1984;16:260-6.
24. Atrash HK, Lawson HW, Smith JC. Legal abortion in the US: trends and mortality. *Contemp Ob Gyn* 1990;35:58-69.
25. Cates W Jr, Rochat RW, Smith JS, Tyler CW. Trends in national abortion mortality, United States, 1940-1974: implications for prevention of future abortion deaths. *Adv Plan Parent* 1976;11:106-13.
26. Atrash HK, MacKay T, Binkin NJ, Hogue CJR. Legal abortion mortality in the United States: 1972 to 1982. *Am J Obstet Gynecol* 1987;156:605-12.
27. Lawson HW, Frye A, Atrash HK, Smith JC, Shulman HB, Ramick M. Abortion mortality, United States, 1972 through 1987. *Am J Obstet Gynecol* 1994;171:1365-72.
28. Spitz A, Ventura S, Koonin LM, et al. Surveillance for pregnancy and birth rates among teenagers, by state—United States, 1980 and 1990. In: CDC surveillance summaries, December 1993. *MMWR* 1993;42(No. SS-6):1-27.
29. CDC. State-specific pregnancy and birth rates among teenagers—United States, 1991-1992. Atlanta: US Department of Health and Human Services, Public Health Service, CDC, 1995: 678-84.
30. Jones EF, Forrest JD. Contraceptive failure rates based on the 1988 NSFG. *Fam Plann Perspect* 1992;24:12-9.
31. Torres A, Forrest JD. Why do women have abortions? *Fam Plann Perspect* 1988;20:169-76.
32. National Center for Health Statistics, Williams L, Pratt WF. Wanted and unwanted childbearing in the United States 1973-88. Hyattsville, MD: US Department of Health and Human Services, Public Health Service, CDC, 1990;(189):1-7. (Advance data).
33. Westoff CF. Contraceptive paths towards the reduction of unintended pregnancy and abortion. *Fam Plann Perspect* 1988;20:4-13.

### State and Territorial Epidemiologists and Laboratory Directors

State and Territorial Epidemiologists and Laboratory Directors are acknowledged for their contributions to *CDC Surveillance Summaries*. The epidemiologists listed below were in the positions shown as of February 1996, and laboratory directors listed below were in the positions shown as of February 1996.

State/Territory	Epidemiologist	Laboratory Director
Alabama	John P. Lofgren, MD	William J. Callan, PhD
Alaska	John P. Middaugh, MD	Gregory V. Hayes, DrPH
Arizona	Norman J. Petersen, SM (Acting)	Barbara J. Erickson, PhD
Arkansas	Thomas C. McChesney, DVM	Michael G. Foreman
California	Stephen H. Waterman, MD, MPH	Michael G. Volz, PhD
Colorado	Richard E. Hoffman, MD, MPH	Ronald L. Cada, DrPH
Connecticut	James L. Hadler, MD, MPH	Sanders F. Hawkins, PhD
Delaware	A. LeRoy Hathcock, PhD	Mahadeo P. Verma, PhD
District of Columbia	Martin E. Levy, MD, MPH	James B. Thomas, ScD
Florida	Richard S. Hopkins, MD, MSPH	E. Charles Hartwig, ScD
Georgia	Kathleen E. Toomey, MD, MPH	Elizabeth A. Franko, DrPH
Hawaii	Richard L. Vogt, MD, MPH	Vernon K. Miyamoto, PhD
Idaho	Jesse F. Greenblatt, MD, MPH	Richard H. Hudson, PhD
Illinois	Byron J. Francis, MD, MPH	David F. Carpenter, PhD
Indiana	Gregory K. Steele, DrPH, MPH	David E. Nauth (Acting)
Iowa	M. Patricia Quinlisk, MD, MPH	Mary J. R. Gilchrist, PhD
Kansas	Gianfranco Pezzino, MD, MPH	Roger H. Carlson, PhD
Kentucky	Reginald Finger, MD, MPH	Thomas E. Maxson, DrPH
Louisiana	Louise McFarland, DrPH	Henry B. Bradford, Jr, PhD
Maine	Kathleen F. Gensheimer, MD, MPH	John A. Krueger (Acting)
Maryland	Diane M. Dwyer, MD, MPH	J. Mehseu Joseph, PhD
Massachusetts	Alfred DeMaria, Jr, MD	Ralph J. Timperi, MPH
Michigan	Kenneth R. Wilcox, Jr, MD, DrPH	Robert Martin, DrPH
Minnesota	Michael T. Osterholm, PhD, MPH	Pauline Bouchard, JD, MPH
Mississippi	Mary Currier, MD, MPH	Joe O. Graves, PhD
Missouri	H. Denny Donnell, Jr, MD, MPH	Eric C. Blank, DrPH
Montana	Todd A. Damrow, PhD, MPH	Douglas O. Abbott, PhD
Nebraska	Thomas J. Safranek, MD	John D. Blosser
Nevada	Randall L. Todd, DrPH	Arthur F. DiSalvo, MD
New Hampshire	M. Geoffrey Smith, MD, MPH	Veronica C. Malmberg, MSN
New Jersey	Vacant	Marion Pierce
New Mexico	C. Mack Sewell, DrPH, MS	Loris W. Hughes, PhD
New York City	Benjamin A. Mojica, MD, MPH	Stanley Reimer
New York State	Dale L. Morse, MD, MS	Ann Wiley, PhD
North Carolina	J. Michael Moser, MD, MPH	Lou F. Turner, DrPH
North Dakota	Larry A. Shireley, MS, MPH	James D. Anders, MPH
Ohio	Thomas J. Halpin, MD, MPH	Kathleen L. Meckstroth, DrPH
Oklahoma	J. Michael Crutcher, MD, MPH (Acting)	Garry L. McKee, PhD
Oregon	David W. Fleming, MD	Michael R. Skeels, PhD, MPH
Pennsylvania	James T. Rankin, Jr, DVM, PhD, MPH	Bruce Kieger, DrPH
Rhode Island	Utpala Bandy, MD, MPH	Walter S. Combs, PhD
South Carolina	James J. Gibson, MD, MPH	Harold Dowda, PhD
South Dakota	Susan E. Lance, DVM, PhD, MPH	Richard S. Steece, PhD
Tennessee	William L. Moore, MD	Michael W. Kimberly, DrPH
Texas	Diane M. Simpson, MD, PhD	David L. Maserang, PhD
Utah	Craig R. Nichols, MPA	Charles D. Brokopp, DrPH
Vermont	Vacant	Burton W. Wilke, Jr, PhD
Virginia	Grayson B. Miller, Jr, MD, MPH	James L. Pearson, DrPH
Washington	Paul Stehr-Green, DrPH, MPH	Jon M. Counts, DrPH
West Virginia	Loretta E. Haddy, MA, MS	Frank W. Lambert, Jr, DrPH
Wisconsin	Jeffrey P. Davis, MD	Ronald H. Laessig, PhD
Wyoming	Gayle L. Miller, DVM, MPH	Roy J. Almeida, DrPH
American Samoa	Edgar C. Reid, MO, DSM, MPH	—
Federated States of Micronesia	Vacant	—
Guam	Robert L. Haddock, DVM, MPH	Florencia Nocon (Acting)
Marshall Islands	Tom D. Kijner	—
Northern Mariana Islands	Jose L. Chong, MD	Isamu J. Abraham, DrPH
Palau	Jill McCready, MS, MPH	—
Puerto Rico	Carmen C. Deseda, MD, MPH	Jose Luis Miranda Arroyo, MD
Virgin Islands	Donna M. Green, MD	Norbert Mantor, PhD

## MMWR

The *Morbidity and Mortality Weekly Report (MMWR)* Series is prepared by the Centers for Disease Control and Prevention (CDC) and is available free of charge in electronic format and on a paid subscription basis for paper copy. To receive an electronic copy on Friday of each week, send an e-mail message to [lists@list.cdc.gov](mailto:lists@list.cdc.gov). The body content should read *subscribe mmwr-toc*. Electronic copy also is available from CDC's World-Wide Web server at <http://www.cdc.gov/> or from CDC's file transfer protocol server at <ftp.cdc.gov>. To subscribe for paper copy, contact Superintendent of Documents, U.S. Government Printing Office, Washington, DC 20402; telephone (202) 512-1800.

Data in the weekly *MMWR* are provisional, based on weekly reports to CDC by state health departments. The reporting week concludes at close of business on Friday; compiled data on a national basis are officially released to the public on the following Friday. Address inquiries about the *MMWR* Series, including material to be considered for publication, to: Editor, *MMWR* Series, Mailstop C-08, CDC, 1600 Clifton Rd., N.E., Atlanta, GA 30333; telephone (404) 332-4555.

All material in the *MMWR* Series is in the public domain and may be used and reprinted without permission; citation as to source, however, is appreciated.

☆U.S. Government Printing Office: 1996-733-175/27058 Region IV