



July 30, 1999 / Vol. 48 / No. SS-4

**MMWR**<sup>TM</sup>  
MORBIDITY AND MORTALITY  
WEEKLY REPORT

---

***CDC***  
***Surveillance***  
***Summaries***

**Abortion Surveillance —  
United States, 1996**

**U.S. DEPARTMENT OF HEALTH AND HUMAN SERVICES**  
Centers for Disease Control and Prevention (CDC)  
Atlanta, Georgia 30333



The *MMWR* series of publications is published by the Epidemiology Program Office, Centers for Disease Control and Prevention (CDC), U.S. Department of Health and Human Services, Atlanta, GA 30333.

SUGGESTED CITATION

General: Centers for Disease Control and Prevention. *CDC Surveillance Summaries*, July 30, 1999. MMWR 1999;48(No. SS-4).  
Specific: [Author(s)]. [Title of article]. In: *CDC Surveillance Summaries*, July 30, 1999. MMWR 1999;48(No. SS-4):[inclusive page numbers].

Centers for Disease Control and Prevention ..... Jeffrey P. Koplan, M.D., M.P.H.  
*Director*

The production of this report as an *MMWR* serial publication was coordinated in  
Epidemiology Program Office..... Stephen B. Thacker, M.D., M.Sc.  
*Director*

Gibson R. Parrish, II, M.D.  
*Associate Editor, CDC Surveillance Summaries*

Office of Scientific and Health Communications ..... John W. Ward, M.D.,  
*Director*  
*Editor, MMWR Series*

*CDC Surveillance Summaries* ..... Suzanne M. Hewitt, M.P.A.  
*Managing Editor*

Patricia A. McGee  
*Project Editor*

Morie M. Higgins  
Peter M. Jenkins  
*Visual Information Specialists*

Use of trade names and commercial sources is for identification only and does not imply endorsement by the U.S. Department of Health and Human Services.

Copies can be purchased from Superintendent of Documents, U.S. Government Printing Office, Washington, DC 20402-9325. Telephone: (202) 512-1800.

## Contents

Reports Published in <i>CDC Surveillance Summaries</i> Since January 1, 1988 .....	ii
Abortion Surveillance — United States, 1996 .....	1
Introduction .....	2
Methods .....	2
Results .....	4
Discussion .....	6
References .....	10
State and Territorial Epidemiologists and Laboratory Directors .....	Inside Back Cover

**Reports Published in *CDC Surveillance Summaries* Since January 1, 1988**

<b>Subject</b>	<b>Responsible CIO/Agency*</b>	<b>Most Recent Report</b>
Abortion	NCCDPHP	1999; Vol. 48, No. SS-4
AIDS/HIV		
AIDS-Defining Opportunistic Illnesses	NCHSTP/NCID	1999; Vol. 48, No. SS-2
Distribution by Racial/Ethnic Group	NCID	1988; Vol. 37, No. SS-3
Among Black and Hispanic Children		
and Women of Childbearing Age	NCEHIC	1990; Vol. 39, No. SS-3
Asthma	NCEH	1998; Vol. 47, No. SS-1
Behavioral Risk Factors	NCCDPHP	1997; Vol. 46, No. SS-3
Birth Defects		
Birth Defects Monitoring Program		
(see also Malformations)	NCEH	1993; Vol. 42, No. SS-1
Contribution of Birth Defects to Infant Mortality		
Among Minority Groups	NCEHIC	1990; Vol. 39, No. SS-3
Breast and Cervical Cancer	NCCDPHP	1992; Vol. 41, No. SS-2
<i>Campylobacter</i>	NCID	1988; Vol. 37, No. SS-2
Cardiovascular Disease	EPO/NCCDPHP	1998; Vol. 47, No. SS-5
Chancroid	NCPS	1992; Vol. 41, No. SS-3
Chlamydia	NCPS	1993; Vol. 42, No. SS-3
Cholera	NCID	1992; Vol. 41, No. SS-1
Chronic Fatigue Syndrome	NCID	1997; Vol. 46, No. SS-2
Congenital Malformations, Minority Groups	NCEHIC	1988; Vol. 37, No. SS-3
Contraception Practices	NCCDPHP	1992; Vol. 41, No. SS-4
Cytomegalovirus Disease, Congenital	NCID	1992; Vol. 41, No. SS-2
Dengue	NCID	1994; Vol. 43, No. SS-2
Dental Caries and Periodontal Disease Among		
Mexican-American Children	NCPS	1988; Vol. 37, No. SS-3
Developmental Disabilities	NCEH	1996; Vol. 45, No. SS-2
Diabetes Mellitus	NCCDPHP	1993; Vol. 42, No. SS-2
Dracunculiasis	NCID	1992; Vol. 41, No. SS-1
Ectopic Pregnancy	NCCDPHP	1993; Vol. 42, No. SS-6
Elderly, Hospitalizations Among	NCCDPHP	1991; Vol. 40, No. SS-1
<i>Escherichia coli</i> O157	NCID	1991; Vol. 40, No. SS-1
Evacuation Camps	EPO	1992; Vol. 41, No. SS-4
Family Planning Services at Title X Clinics	NCCDPHP	1995; Vol. 44, No. SS-2
Food Safety	NCID	1998; Vol. 47, No. SS-4
Gonorrhea and Syphilis, Teenagers	NCPS	1993; Vol. 42, No. SS-3
Hazardous Substances Emergency Events	ATSDR	1994; Vol. 43, No. SS-2
Health Surveillance Systems	IHPO	1992; Vol. 41, No. SS-4
Homicide	NCEHIC	1992; Vol. 41, No. SS-3
Homicides, Black Males	NCEHIC	1988; Vol. 37, No. SS-1
Hysterectomy	NCCDPHP	1997; Vol. 46, No. SS-4
Infant Mortality (see also National Infant Mortality;		
Birth Defects; Postneonatal Mortality)	NCEHIC	1990; Vol. 39, No. SS-3
Influenza	NCID	1997; Vol. 46, No. SS-1
Injury		
Death Rates, Blacks and Whites	NCEHIC	1988; Vol. 37, No. SS-3
Drownings	NCEHIC	1988; Vol. 37, No. SS-1

**\*Abbreviations**

ATSDR	Agency for Toxic Substances and Disease Registry
CIO	Centers/Institute/Offices
EPO	Epidemiology Program Office
IHPO	International Health Program Office
NCCDPHP	National Center for Chronic Disease Prevention and Health Promotion
NCEH	National Center for Environmental Health
NCEHIC	National Center for Environmental Health and Injury Control
NCHSTP	National Center for HIV, STD, and TB Prevention
NCID	National Center for Infectious Diseases
NCIPC	National Center for Injury Prevention and Control
NCPS	National Center for Prevention Services
NIOSH	National Institute for Occupational Safety and Health
NIP	National Immunization Program

---

**Reports Published in *CDC Surveillance Summaries* Since January 1, 1988 — Continued**


---

<b>Subject</b>	<b>Responsible CIO/Agency*</b>	<b>Most Recent Report</b>
Falls, Deaths	NCEHIC	1988; Vol. 37, No. SS-1
Firearm-Related Deaths, Unintentional	NCEHIC	1988; Vol. 37, No. SS-1
Head and Neck	NCIPC	1993; Vol. 42, No. SS-5
In Developing Countries	NCEHIC	1992; Vol. 41, No. SS-1
In the Home, Persons <15 Years of Age	NCEHIC	1988; Vol. 37, No. SS-1
Motor Vehicle-Related Deaths	NCEHIC	1988; Vol. 37, No. SS-1
Objectives of Injury Control, State and Local	NCEHIC	1988; Vol. 37, No. SS-1
Objectives of Injury Control, National	NCEHIC	1988; Vol. 37, No. SS-1
Residential Fires, Deaths	NCEHIC	1988; Vol. 37, No. SS-1
Tap Water Scalds	NCEHIC	1988; Vol. 37, No. SS-1
Lead Poisoning, Childhood	NCEHIC	1990; Vol. 39, No. SS-4
Low Birth Weight	NCCDPHP	1990; Vol. 39, No. SS-3
Malaria	NCID	1999; Vol. 48, No. SS-1
Measles	NCPS	1992; Vol. 41, No. SS-6
Meningococcal Disease	NCID	1993; Vol. 42, No. SS-2
Mumps	NIP	1995; Vol. 44, No. SS-3
National Infant Mortality (see also Infant Mortality; Birth Defects)	NCCDPHP	1989; Vol. 38, No. SS-3
<i>Neisseria gonorrhoeae</i> , Antimicrobial Resistance in	NCPS	1993; Vol. 42, No. SS-3
Neural Tube Defects	NCEH	1995; Vol. 44, No. SS-4
Occupational Injuries/Disease		
Asthma	NIOSH	1999; Vol. 48, No. SS-3
Silicosis	NIOSH	1997; Vol. 46, No. SS-1
Parasites, Intestinal	NCID	1991; Vol. 40, No. SS-4
Pediatric Nutrition	NCCDPHP	1992; Vol. 41, No. SS-7
Pertussis	NCPS	1992; Vol. 41, No. SS-8
Plague, American Indians	NCID	1988; Vol. 37, No. SS-3
Poliomyelitis	NCPS	1992; Vol. 41, No. SS-1
Postneonatal Mortality	NCCDPHP	1998; Vol. 47, No. SS-2
Pregnancy		
Pregnancy Nutrition	NCCDPHP	1992; Vol. 41, No. SS-7
Pregnancy-Related Mortality	NCCDPHP	1997; Vol. 46, No. SS-4
Pregnancy, Teenage	NCCDPHP	1993; Vol. 42, No. SS-6
Rabies	NCID	1989; Vol. 38, No. SS-1
Racial/Ethnic Minority Groups	Various	1990; Vol. 39, No. SS-3
Respiratory Disease	NCEHIC	1992; Vol. 41, No. SS-4
Rotavirus	NCID	1992; Vol. 41, No. SS-3
<i>Salmonella</i>	NCID	1988; Vol. 37, No. SS-2
School Health Education Profiles	NCCDPHP	1998; Vol. 47, No. SS-4
Sexually Transmitted Diseases in Italy	NCPS	1992; Vol. 41, No. SS-1
Smoking	NCCDPHP	1990; Vol. 39, No. SS-3
Smoking-Attributable Mortality	NCCDPHP	1994; Vol. 43, No. SS-1
Tobacco-Control Laws, State	NCCDPHP	1999; Vol. 48, No. SS-3
Tobacco-Use Behaviors	NCCDPHP	1994; Vol. 43, No. SS-3
Spina Bifida	NCEH	1996; Vol. 45, No. SS-2
Streptococcal Disease (Group B)	NCID	1992; Vol. 41, No. SS-6
Suicides, Persons 15–24 Years of Age	NCEHIC	1988; Vol. 37, No. SS-1
Syphilis, Congenital	NCPS	1993; Vol. 42, No. SS-6
Syphilis, Primary and Secondary	NCPS	1993; Vol. 42, No. SS-3
Tetanus	NIP	1998; Vol. 47, No. SS-2
Trichinosis	NCID	1991; Vol. 40, No. SS-3
Tuberculosis	NCPS	1991; Vol. 40, No. SS-3
Waterborne-Disease Outbreaks	NCID	1998; Vol. 47, No. SS-5
Years of Potential Life Lost	EPO	1992; Vol. 41, No. SS-6
Youth Risk Behaviors	NCCDPHP	1998; Vol. 47, No. SS-3
Youth Risk Behaviors, College Students	NCCDPHP	1997; Vol. 46, No. SS-6

---



## Abortion Surveillance — United States, 1996

Lisa M. Koonin, M.N., M.P.H.; Lilo T. Strauss, M.A.  
Camaryn E. Chrisman, M.P.H.; Myra A. Montalbano  
Linda A. Bartlett, M.D., M.H.Sc.; Jack C. Smith, M.S.  
*Division of Reproductive Health  
National Center for Chronic Disease Prevention  
and Health Promotion, CDC*

### Abstract

**Problem/Condition:** In 1969, CDC began abortion surveillance to document the number and characteristics of women obtaining legal induced abortions, to monitor unintended pregnancy, and to assist efforts to identify and reduce preventable causes of morbidity and mortality associated with abortions.

**Reporting Period Covered:** This report summarizes and reviews information reported to CDC regarding legal induced abortions obtained in the United States in 1996. This report also includes recently reported abortion-related deaths that occurred in 1992.

**Description of System:** For each year since 1969, CDC has compiled abortion data received from 52 reporting areas in the United States: 50 states, the District of Columbia, and New York City.

**Results:** In 1996, a total of 1,221,585 legal abortions were reported to CDC, representing a 0.9% increase from the number reported for 1995. The abortion ratio was 314 legal induced abortions per 1,000 live births, and as in 1995, the abortion rate was 20 per 1,000 women aged 15–44 years. Women who were undergoing an abortion were more likely to be young (i.e. aged <25 years), white, and unmarried; most were obtaining an abortion for the first time. More than one half of all abortions (55%) were performed at  $\leq 8$  weeks of gestation, and approximately 88% were performed before 13 weeks. Approximately 16% of abortions were performed at the earliest weeks of gestation ( $\leq 6$  weeks), approximately 17% at 7 weeks of gestation, and approximately 21% at 8 weeks of gestation. Few abortions were provided after 15 weeks of gestation — approximately 4% of abortions were obtained at 16–20 weeks, and 1.5% were obtained at  $\geq 21$  weeks. Younger women (i.e., women aged  $\leq 24$  years) were more likely to obtain abortions later in pregnancy than were older women.

In 1992, 10 women died as a result of complications from legal induced abortion, and no deaths were reported associated with illegal abortion. In 1992, the case-fatality rate of legal induced abortion was 0.7 abortion-related deaths per 100,000 legal induced abortions.

**Interpretation:** From 1990 through 1995, the number of abortions declined each year; in 1996, the number of abortions in the United States stabilized. As in previous years, deaths related to legal induced abortions occurred rarely (i.e., approximately one death per 100,000 legal induced abortions).

**Actions Taken:** The number and characteristics of women who obtain abortions in the United States should continue to be monitored so that trends in induced abortion can be assessed, efforts to prevent unintended pregnancy can be evaluated, and the

preventable causes of morbidity and mortality associated with abortions can be identified and reduced.

## INTRODUCTION

In 1969, CDC began abortion surveillance to document the number and characteristics of women obtaining legal induced abortions, to monitor unintended pregnancy, and to assist efforts to identify and reduce preventable causes of morbidity and mortality associated with abortions. This report is based on abortion data for 1996 provided to CDC's National Center for Chronic Disease Prevention and Health Promotion (NCCDPHP), Division of Reproductive Health.

## METHODS

For 1996, CDC compiled data from 52 reporting areas in the United States: 50 states, the District of Columbia, and New York City. Legal induced abortion was defined as a procedure, performed by a licensed physician or someone acting under the supervision of a licensed physician, that was intended to terminate a suspected or known intrauterine pregnancy and to produce a nonviable fetus at any gestational age (1,2). The total number of legal induced abortions was available from all reporting areas; however, not all of these areas collected information regarding the characteristics of women who obtained abortions.

The availability of information about characteristics of women who obtained an abortion in 1996 varied by state. Most reporting areas (44 states and New York City) collected and reported adequate abortion data (i.e., data of sufficient quality to be used for analysis) by age of the woman, whereas only 22 states and New York City collected and reported adequate abortion data by Hispanic ethnicity. In the "Results" section of this report, all of the percentage data for each characteristic represent only women with known characteristics; unknowns have not been distributed for the calculation of these percentages (Tables 4, 6–13). Areas were excluded from the analysis if data regarding a given characteristic were unknown for >15% of women (Tables 1, 4–18).

For 48 reporting areas, data concerning the number and characteristics of women obtaining legal induced abortions were provided by the central health agency\*; for the other four areas, data were provided by hospitals and other medical facilities (3). Because information concerning the residence of women who obtained abortions was not available from some states, the procedures were reported by the state in which they were performed. However, for two reporting areas (i.e., the District of Columbia and Wisconsin), characteristics of women who were nonresidents and who obtained abortions in 1996 were unavailable.

For analysis by age, women who obtained legal induced abortions were grouped by 5-year age groups. Both ratios (i.e., the number of abortions per 1,000 live births per year) and rates (the number of abortions per 1,000 women per year) are presented by age group in this report. Starting with 1996, ratios were calculated by using the number of live births to residents of each area reported to CDC's National Center for

---

\*Includes state health departments and the health departments of New York City and the District of Columbia.



Health Statistics, and rates were calculated by using the number of women residents of each area reported in special unpublished tabulations provided by the U.S. Bureau of the Census. Because almost all (94%) abortions among women aged <15 years in 1988 (4) occurred among those aged 13–14 years, the population of women aged 13–14 years was used as the denominator for calculating abortion rates for women aged <15 years. Rates for women aged  $\geq 40$  years were based on the number of women aged 40–44 years, whereas rates for all women who obtained abortions were based on the population of women aged 15–44 years.

Race was categorized by three groups (i.e., a] white, b] black, and c] all other races) or two groups (i.e., a] white and b] black and all other races). "Other" races included Asian/Pacific Islander, American Indian, Alaskan Native, and women classified as "other" race. As in previous reports, Hispanic ethnicity and race were evaluated separately, and rates and ratios were presented by both race and Hispanic ethnicity.

Marital status was reported as either married (which included women who were married or separated) or unmarried (which included those who were never married, divorced, or widowed, except where noted). Reporting of marital status differed somewhat by state, particularly for the data used as denominators to calculate abortion ratios by marital status; therefore, abortion ratios by marital status should be interpreted cautiously.

Most areas (37 of 40) that reported adequate data on week of gestation at the time of abortion also reported abortions performed at  $\leq 6$ , 7, and 8 weeks of gestation. Gestational age (in weeks) at the time of abortion was reported by approximately one half of the areas from estimates derived from the time elapsed since the woman's last menstrual period. In 1996, for 18 other states, gestational age was reported on the basis of the physician's estimate for each reported abortion or when information regarding the last menstrual period was missing or unreliable. Physician's estimates for gestational age also could have included information from the clinical examination as well as the time elapsed since the last menstrual period.

CDC has periodically reported information on abortion-related deaths; 1972 was the first year for which such data were available (5). Sources for such information included national and state vital records, maternal mortality review committees, surveys, private citizens, the media, health-care providers, medical examiners' reports, and, more recently, computerized searches of several full-text newspaper databases. For each reported case, clinical records and autopsy reports were requested and reviewed by two medical epidemiologists to determine the cause of death and verify that the death was abortion-related.

An abortion-related death was defined as a death resulting from a) a direct complication of an abortion, b) an indirect complication caused by the chain of events initiated by the abortion, or c) aggravation of a preexisting condition by the physiologic or psychologic effects of the abortion (2). Each abortion-related death was then categorized as legal induced, illegal induced, spontaneous, or unknown. Deaths that did not satisfy the criteria of the case definition were classified as not abortion-related.\*

---

\*These terms were defined in detail in CDC's abortion surveillance reports for 1977 and 1978 (1,2).

This report includes reported abortion-related deaths that occurred in 1992. National case-fatality rates were calculated as the number of legal induced abortion-related deaths per 100,000 legal induced abortions. Trends in case-fatality rates for legal induced abortions during 1972–1992 are reported.

## RESULTS

In 1996, a total of 1,221,585 legal induced abortions were reported to CDC, representing a slight increase of 0.9% from the number reported for 1995 (6) (Table 1). From 1970 through 1982, the reported number of legal abortions in the United States increased every year (Table 2; Figure 1); the largest percentage increase occurred from 1970 to 1971. From 1976 through 1982, the annual increase declined and reached a low of 0.2% during 1980–1981 and during 1981–1982. From 1983 through 1990, the number of abortions increased again, although moderately ( $\leq 5\%$  from year to year). However, despite the slight increase in the number of abortions in 1996 compared with 1995, during 1990–1995, the annual number of abortions decreased each year.

The national legal induced abortion ratio (number of legal abortions per 1,000 live births) increased from 1970 through 1980, peaked at 364 per 1,000 live births in 1984, and began to decline steadily in 1987, from 356 per 1,000 to 311 per 1,000 in 1995 (Figure 1; Table 2). From 1995 to 1996, the national abortion ratio increased slightly, from 311 to 314. The national legal induced abortion rate increased from five abortions per 1,000 women aged 15–44 years in 1970 to 25 per 1,000 in 1980. From 1981 through 1992, the rate remained stable at 23–24 abortions per 1,000 women, then declined to 22 in 1993, to 21 in 1994, and to 20 in 1995. In 1996, the abortion rate remained stable at 20 abortions per 1,000 women.

In 1996, as in previous years, most legal induced abortions were performed in California, New York City, Texas, and Florida; the fewest were performed in Wyoming, South Dakota, Idaho, and North Dakota (Table 3) (6). For women whose state of residence was known, approximately 92% had obtained the abortion within the state in which they resided. The percentage of abortions obtained by out-of-state residents ranged from approximately 50% in the District of Columbia to <0.5% in Hawaii. For 1996, eight reporting areas could not provide data concerning abortions obtained by out-of-state residents.

Women aged 20–24 years obtained approximately one third (32%) of all abortions; women aged <15 years obtained <1% of all abortions (Table 4). Abortion ratios were highest for the youngest women (i.e., 723 abortions per 1,000 live births for women aged <15 years and 415 per 1,000 for women aged 15–19 years) and for the oldest women (376 per 1,000 live births for women aged 40–44 years). The ratio was lowest for women aged 30–34 years (165 per 1,000 live births) (Figure 2; Table 4). Among adolescents, the abortion ratio was highest for those aged <15 years and lowest for those aged 19 years (Table 5).

In contrast to abortion ratios, abortion rates were highest for women aged 20–24 years (38 abortions per 1,000 women) and lowest for women at the extremes of reproductive-age (i.e., two abortions per 1,000 women aged <15 years [i.e., 13–14 years] and two per 1,000 women aged 40–44 years) (Table 4).

For women in most age groups, the abortion ratio increased from 1974 through the early 1980s and declined thereafter, particularly for the youngest and oldest

reproductive-aged women (Figure 3). Abortion ratios for women aged <15 years have been and remain higher than those for the other age groups. Although abortion ratios increased slightly for women aged <15 and 15–19 years from 1995 to 1996, these ratios remained among the lowest ever recorded for these age groups. The abortion ratio for women aged 20–34 years (i.e., the group with the highest fertility rate) (7) has remained stable since the mid-1980s.

In 1996, approximately 54% of reported legal induced abortions were obtained at ≤8 weeks of gestation, and approximately 87% at <13 weeks (Table 6). Approximately 16% of abortions were performed during the earliest weeks of gestation (≤6 weeks), approximately 17% at 7 weeks, and approximately 21% at 8 weeks (Table 7). Few abortions were provided after 15 weeks of gestation — approximately 4% of abortions were obtained at 16–20 weeks, and 1.5% were obtained at ≥21 weeks (Figure 4; Table 6).

Almost all (98%) abortions were performed by curettage and <0.5% by intrauterine saline or prostaglandin instillation (Table 8). Hysterectomy and hysterotomy were used in fewer than 0.01% of abortions.

Approximately 57% of women who obtained legal induced abortions were white (Table 9). The abortion ratio for black women was 555 per 1,000 live births; this was approximately 2.7 times the ratio for white women (202 per 1,000 live births). The abortion ratio for women of other races (360 per 1,000 live births) was approximately 1.8 times the ratio for white women. In addition, the abortion rate for black women (31 per 1,000 women) was approximately 2.6 times the rate for white women (12 per 1,000 women).

Twenty-two states and New York City\* reported data concerning the Hispanic ethnicity of women who obtained legal induced abortions (Table 10). The percentage of abortions obtained by Hispanic women in these reporting areas ranged from <1% in several states to approximately 44% in New Mexico. For Hispanic women in these reporting areas, the abortion ratio was 276 per 1,000 live births — slightly lower than the ratio for non-Hispanics in the same areas (282 per 1,000 live births). However, the abortion rate per 1,000 Hispanic women (20 per 1,000 women) was greater than the rate per 1,000 non-Hispanic women (15 per 1,000 women).

Seventy-eight percent of women who obtained abortions were unmarried (Table 11). The abortion ratio for unmarried women was approximately eight times the ratio for married women (655 versus 78 abortions per 1,000 live births).

Approximately 43% of women who obtained legal induced abortions had had no previous live births, and approximately 87% had had two or fewer previous live births (Table 12). The abortion ratio was highest for women who had had three previous live births and lowest for women who had had one previous live birth.

In 1996, of women who obtained an abortion, 54% of women obtained an abortion for the first time. Approximately 18% of women had had at least two previous abortions (Table 13).

The age distribution of women who obtained a legal abortion differed slightly by race (Table 14). However, for women of black or other races, the percentage who were aged <15 years, although small (1.0%), was almost twice the percentage for white women (0.6%). The percentage of women of black or other races who were unmarried

---

\*After excluding 15 areas for which data was unknown for >15% of women who obtained an abortion.

(83%) also was slightly higher than the percentage of white women (77%). Few differences were found by age and Hispanic ethnicity (Table 15). Of those women who had obtained an abortion, a slightly higher percentage of non-Hispanic women were unmarried (80%) in comparison with Hispanic women (77%).

Most (approximately 88%) women who obtained an abortion had their procedure during the first 12 weeks of pregnancy (Tables 16 and 17). The percentage of women who obtained an abortion early in pregnancy (i.e.,  $\leq 8$  weeks of gestation) increased with age, and the percentage who obtained an abortion very late in pregnancy (at  $\geq 21$  weeks of gestation) decreased with age for women up to 30–34 years of age and remained stable for women in older age groups (Figure 5; Table 16). Black women were more likely to obtain an abortion later in pregnancy than were white women or women of other races (Tables 16 and 17). Of all women who obtained an abortion, Hispanic women were slightly more likely than non-Hispanic women to have had an abortion at  $\leq 8$  weeks of gestation and less likely to have had an abortion late in pregnancy ( $\geq 21$  weeks). However, the overall differences between Hispanic and non-Hispanic women in the timing of abortions were minimal (Table 16).

More than 99% of abortions at  $\leq 12$  weeks of gestation were performed by using curettage (primarily suction procedures) (Table 18). After 12 weeks of gestation, the most frequently used procedure also was curettage, although it usually was performed as a dilatation and evacuation (D&E). Intrauterine instillations involved the use of saline or prostaglandin; these procedures were used primarily at  $\geq 16$  weeks of gestation.

CDC received reports of 43 possible abortion-related deaths for 1992 (the most recent year for which data are available). A review of these cases indicated that 27 of the 43 women died of abortion-related causes (Table 19). Ten of the deaths were associated with legal induced abortion, and 17 deaths were associated with spontaneous abortions. No deaths were associated with illegal induced abortions. Possible abortion-related deaths that occurred during 1993–1996 are being investigated.

The case-fatality rate for legal induced abortion in 1992 was 0.7 deaths per 100,000 legal induced abortions. During 1980–1992, annual case-fatality rates for legal induced abortion-related deaths were  $\leq 1.2$  deaths per 100,000 legal induced abortions (Table 19; Figure 6).

## DISCUSSION

From 1990 (i.e., the year in which the number of abortions was highest) through 1995, the annual number of abortions in the United States decreased by 15% (Table 2) (6,8). From 1995 to 1996, the number of abortions differed only slightly (an increase of 0.9%). Therefore, in 1996, the number of abortions in this country appears to have stabilized. In addition, the number of live births in 1996 was also stable from that recorded for 1995, a decrease of 0.2% (7).

The abortion ratio had increased steadily from 1970 through 1980, decreased slightly during 1980–1983, increased to its highest level in 1984, remained fairly stable until 1987, and then declined each subsequent year through 1995 (Table 2; Figure 1). Despite a slight increase in the abortion ratio from 1995 to 1996 (from 311 to 314 abortions per 1,000 live births), the ratio for these 2 years were at the lowest recorded level since 1976 (6,9). The slight ratio increase in 1996 occurred because the numerator of

this ratio (the number of abortions) increased slightly, and the denominator (the number of live births) decreased slightly for that year (7).

In both 1995 and 1996, the national abortion rate was 20 abortions per 1,000 women aged 15–44, the lowest recorded rate since 1975 (10). This trend in the abortion rate might reflect multiple factors, including the decreasing number of unintended pregnancies; a shift in the age distribution of reproductive-aged women towards the older and less fertile ages; reduced access to abortion services; and changes in contraceptive practices, including an increased use of contraception, particularly an increased use of condoms among young women (6, 11–14). In this report, the induced abortion rate in the United States was higher than recent rates reported for Australia, Canada, and Western European countries and lower than rates reported for China, Cuba, most Eastern European countries, and several of the Newly Independent States of the former Soviet Union (15,16). Abortion and birth rates for teenagers are higher in the United States than in most Western European countries and some Eastern European countries (17).

As in previous years, the abortion ratio in 1996 varied substantially by age (6). Although the ratio was highest for adolescents, the percentage of legal induced abortions obtained by women aged  $\leq 19$  years has decreased since the mid-1980s (i.e., from 26% in 1984 to 22% in 1990 and to 20% in 1992) and has remained at that level (8,18). From 1984 through 1995, the abortion ratio declined for women aged 15–19 years to the lowest abortion ratio ever recorded for that age group (Figure 3). In 1996, the ratio for this group rose slightly. Other studies have indicated a decrease in pregnancy rates for women aged 15–19 years from 1992 through 1995 and a decrease in teenage birth rates from 1995 to 1996 (7,19).

Several factors might have influenced this decline over time in the abortion ratios among adolescents. First, teenage pregnancies decreased and the decline in abortions was even greater than for live births. Second, the age distribution of reproductive-aged women obtaining abortions shifted from younger women to older women (20). Third, access to abortion services changed (12,13), including the passage of abortion laws that affect adolescents (e.g., parental consent or notification laws and mandatory waiting periods) (21,22).

In 1996, as in 1995, the abortion ratio for black women was more than two and one half times (2.8) the ratio for white women; this differential has increased since 1989 (23). In addition, the abortion rate for black women was approximately 2.7 times the rate for white women. Race-specific differences in legal induced abortion ratios and rates might reflect differences in factors such as socioeconomic status, contraceptive use, incidence of unintended pregnancies, and access to family-planning and contraceptive services.

The abortion-to-live-birth ratio for Hispanic women during 1996 was slightly lower than that for non-Hispanic women. Another report, which describes characteristics of women who obtain abortions supports this finding (24). However, the abortion rate per 1,000 Hispanic women was higher than the rate for non-Hispanic women, which is consistent with several other studies (24,25). For women in all age groups, fertility was substantially higher for Hispanic than for non-Hispanic women (7).

In 1996, a total of 38 areas, including the District of Columbia and New York City, reported Hispanic ethnicity of women who obtained abortions. Because of concerns regarding the completeness of such information (>15% unknown data) for Hispanic

ethnicity in some states, data from only 22 states and New York City were evaluated to determine the number and percentage of abortions obtained by women of Hispanic ethnicity in 1996. These geographical areas represent approximately 34% of all reproductive-aged Hispanic women in the United States in 1996 (CDC, unpublished data). Thus, the number of Hispanic women who obtain abortions might be underestimated (24), and the number, ratio, and rate of abortions for Hispanic women in this report might not be representative of the overall Hispanic population in the United States (i.e., these data might reflect utilization of abortion services only in the areas included in this analysis).

Since 1980, the percentage distribution of abortions by gestational age has been stable, with slight percentage increases toward the earliest and latest gestational ages. Since 1992, there have been slight percentage decreases for abortions performed at 8 and 9–10 weeks and increases in the percentage of abortions performed at the early weeks of gestation (i.e.,  $\leq 6$  and 7 weeks). Recently, interest has increased in surveillance for abortions performed late in pregnancy (i.e.,  $\geq 21$  weeks) (26,27).

Data are compiled and reported to assist in monitoring trends in legal abortions as new medical (nonsurgical) methods of terminating pregnancy are implemented because these new methods are used primarily to terminate pregnancies at  $\leq 8$  weeks of gestation (28–30). Since 1992, most reporting areas have reported abortions by gestational age, in weeks of gestation, for abortions performed at  $\leq 6$ , 7, and 8 weeks. For 1997, most states are expected to collect and report data on abortions performed by medical (nonsurgical) procedures (31). During 1994–1995, approximately 2,000 women in the United States aged  $>18$  years participated in clinical trials testing mifepristone, a medication used for medical (nonsurgical) abortion (32). This medication has not yet been fully approved by the Food and Drug Administration for use and distribution in the United States (Population Council, Personal Communication, 1999). However, other medications (e.g., methotrexate and misoprostol) are currently being used to perform early medical (nonsurgical) abortions (30,33).

In this and previous reports, age was inversely associated with timing of abortion (6). As in previous years, younger women were more likely to obtain an abortion later in gestation than were older women. In addition to the age of the woman, marital status, level of education, availability and accessibility of services, timing of confirmation of pregnancy, personal decision-making, level of fear and denial of pregnancy, and other considerations impact the timing of abortion (34,35).

From 1972 through 1996, the percentage of abortions performed by curettage (which includes D&E) increased from 89% to 99% (Table 1), and the percentage of abortions performed by intrauterine instillation and hysterectomy and hysterotomy declined sharply (from 10% to 0.4% and from 0.6% to  $<0.01\%$ , respectively [5]). From 1974 through 1996, the percentage of second-trimester abortions performed by D&E (curettage) increased from 31% to 93%; the percentage of second-trimester abortions performed by intrauterine instillation decreased from 57% to 2% (36). The continued reliance on D&E probably has resulted from the lower risk for complications associated with the procedure (37,38).

From 1972 through 1992, the annual number of deaths associated with legal induced abortion has decreased by 58% (5). In 1972, 24 women died from causes associated with legal abortion, and 39 women died from illegal abortions (5). In 1992, 10 women died as a result of legal induced abortion, and none died as a result of

illegal abortion. The case-fatality rate decreased by 82% between 1972 and 1992. These rates, consistent with previously published data for the 1970s and mid-1980s, indicate that the risk for death from legal induced abortion continues to be extremely low (39–42).

In 1992, 17 reported deaths were associated with spontaneous abortion. This number was greater than in previous years; spontaneous abortion-related deaths have been relatively stable at <10 deaths per year since 1978. The reason for this increase in reported spontaneous abortion-related deaths is unclear at this time and is under investigation.

The number, ratio, and rate of abortions from this analysis are conservative estimates because the numbers of legal abortions reported to CDC for 1996 were probably lower than the numbers actually performed. Totals provided by central health agencies might be lower than those obtained by direct surveys of abortion providers (3). For example, the total number of abortions reported to CDC for 1996 was approximately 12% lower than that reported for 1996 by The Alan Guttmacher Institute, a private organization that directly contacts abortion providers to obtain information concerning the total number of abortions performed (13). In addition, not all states collected and/or reported information (e.g., age, race, and gestational age) concerning women obtaining a legal induced abortion in 1996; therefore, the numbers, percentages, rates, and ratios derived from this analysis might not be representative of all women who obtained abortions in that year.

Despite these limitations, findings from ongoing national surveillance for legal induced abortion are useful for several purposes. First, public health agencies use data from abortion surveillance that characterize women who are at high risk for unintended pregnancy. Second, ongoing annual surveillance is used to monitor trends in the number, ratio, and rate of abortions in the United States. Third, statistics on the number of pregnancies ending in abortion are used in conjunction with birth and fetal death statistics to estimate pregnancy rates (e.g., pregnancy rates among teenagers) (4) and other outcome rates (e.g., the rate of ectopic pregnancies per 1,000 pregnancies). Fourth, abortion and pregnancy rates can be used to evaluate the effectiveness of family-planning programs and programs for preventing unintended pregnancy. Fifth, ongoing surveillance provides data for assessing changes in clinical practice patterns related to abortion (e.g., longitudinal changes in the types of procedures and trends in gestational age at the time of abortion). Finally, abortion data are used as the denominator in calculating abortion morbidity and mortality rates.

Induced abortions usually are linked to unintended pregnancies, which often occur despite use of contraception (14,43,44). In 1995, data from the National Survey of Family Growth (NSFG) indicated that approximately 31% of live births were associated with unintended pregnancy (i.e., either mistimed or unwanted at conception) (11). Unintended pregnancy is not a problem just for adolescents, unmarried women, or for poor women; it is a pervasive public health problem for all women of reproductive age (11).

In a study of abortion patients conducted during 1994 and 1995, 58% of patients reported that they "currently used" contraception during the month of their last menstrual period; however, their use of contraception might have been inconsistent or incorrect (25). In 1995, when the most recent NSFG was conducted, approximately 29% of sexually active U.S. women who used only oral contraceptives for birth control

reported that they missed a birth-control pill one or more times during the 3 months before their NSFG interview. In addition, approximately 33% of U.S. women who were using only coitus-dependent contraceptive methods\* during the 3 months before the interview used these methods inconsistently (11). At present, not all health insurance plans provide full contraceptive benefits (45). Therefore, education regarding improved contraceptive use and practices as well as access to and education regarding safe, effective, and affordable contraception and family-planning services might help reduce the incidence of unintended pregnancy and, therefore, might reduce the use of legal induced abortion in the United States (46,47).

Recently passed welfare-reform legislation — the Personal Responsibility and Work Opportunity Reconciliation Act of 1996<sup>†</sup> — has increased the interest in accurate state-based surveillance for induced abortion. In addition, some states have instituted programs that emphasize the prevention of unintended pregnancy, particularly among adolescents. To help guide these efforts, an ongoing, accurate assessment of induced abortion is needed in all states to determine the number and characteristics of women who obtain these procedures.

Additional statistical and epidemiologic information about legal induced abortions is available from CDC's automated Reproductive Health Information System. This system provides information by fax, voice recordings, or mail; telephone (888) 232-2306. Copies of *MMWR* reports containing statistical and epidemiologic information about abortions also can be obtained through the CDC website at <[http://www.cdc.gov/nccdphp/drh/surv\\_abort.htm](http://www.cdc.gov/nccdphp/drh/surv_abort.htm)>.

### Acknowledgments

The authors thank Mary M. Goodwin, MPH, and Karen S. Colberg, both with the Division of Reproductive Health, NCCDPHP, CDC; and David A. Gilbertz, MS, TRW, Inc., Atlanta, GA, for their critical work with data compilation and computer programming for this surveillance project.

\*Coitus-dependent contraceptive methods include male or female condoms, diaphragm, sponge, cream, jelly, or other methods that must be used at the time intercourse occurs.

<sup>†</sup>Section 103 of P.L. 104-193 provides for additional welfare funding for as many as five states if a) the birth rate of infants to unwed mothers is decreased and b) the rate of induced pregnancy terminations is less than the rate for 1995 (the baseline year).

### References

1. CDC. Abortion Surveillance, 1977. Atlanta: US Department of Health, Education, and Welfare, Public Health Service, CDC, 1979:7.
2. CDC. Abortion Surveillance, 1978. Atlanta: US Department of Health, Education, and Welfare, Public Health Service, CDC, 1980:7.
3. Saul R. Abortion reporting in the United States: an examination of the Federal-State partnership. *Fam Plann Perspect* 1998;30:244-7.
4. Spitz AM, Velebil P, Koonin LM, et al. Pregnancy, abortion, and birth rates among US adolescents—1980, 1985, and 1990. *JAMA* 1996;275:989-94.
5. CDC. Abortion Surveillance, 1972. Atlanta: US Department of Health, Education, and Welfare, Public Health Service, CDC, 1974:5.
6. Koonin LM, Smith JC, Ramick M, Strauss LT. Abortion surveillance—United States, 1995. In: CDC surveillance summaries (July 1998). *MMWR* 1998;47(No. SS-2):31-68.
7. Ventura SJ, Martin JA, Curtin SC, Mathews TJ. Report of final natality statistics, 1996. *Mon Vital Stat Rep* 1998;46(11, suppl).

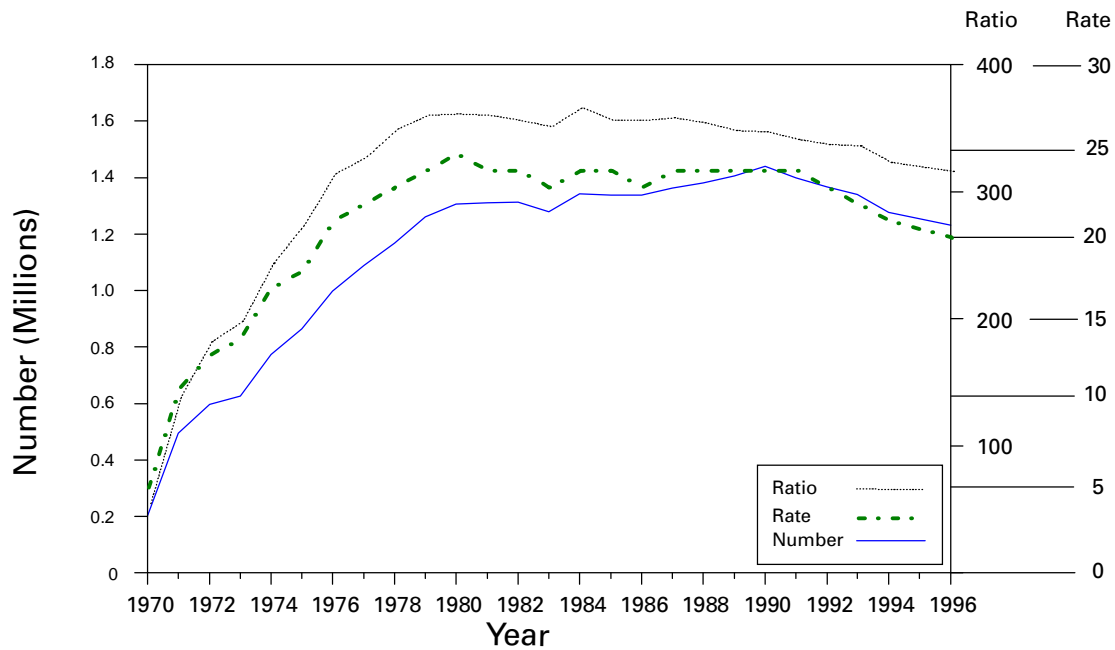


8. Koonin LM, Smith JC, Ramick M. Abortion surveillance—United States, 1990. In: CDC surveillance summaries (December 1993). *MMWR* 1993;42(No. SS-6):29–57.
9. CDC. Abortion surveillance, 1976. Atlanta: US Department of Health, Education, and Welfare, Public Health Service, CDC, 1978.
10. CDC. Abortion surveillance, 1975. Atlanta: US Department of Health and Human Services, Public Health Service, CDC, 1977.
11. Abma JC, Chandra A, Mosher WD, Peterson LS, Piccinino LJ. Fertility, family planning, and women's health: new data from the 1995 National Survey of Family Growth. Hyattsville, MD: US Department of Health and Human Services, Public Health Service, CDC, 1997; DHHS publication no. (PHS)97-1995. (Vital and health statistics; series 23, no. 19).
12. Henshaw SK. Factors hindering access to abortion services. *Fam Plann Perspect* 1995;27:54–9.
13. Henshaw SK. Abortion incidence and services in the United States, 1995–1996. *Fam Plann Perspect* 1998;30:263–70, 287.
14. Piccinino LJ, Mosher WD. Trends in contraceptive use in the United States: 1982–1995. *Fam Plann Perspect* 1998;30:4–10, 46.
15. Henshaw SK, Singh S, Haas T. The incidence of abortion worldwide. *Intl Fam Plann Perspect* 1999;25(suppl):S30–S37.
16. Statistics Canada. Therapeutic abortions, 1995. Ottawa: Minister of Industry, 1997; cat. no. 82-219-XPB.
17. McElroy SW, Moore KA. Trends over time in teenage pregnancy and childbearing: the critical changes. In: Maynard RA, ed. *Kids having kids*. Washington, DC: Urban Institute Press, 1997: 23–53.
18. Lawson HW, Atrash HK, Saftlas AF, Koonin LM, Ramick M, Smith JC. Abortion surveillance, United States, 1984–1985. In: CDC surveillance summaries (September 1989). *MMWR* 1989; 38(No. SS-2):11–45.
19. CDC. State-specific pregnancy rates among adolescents—United States, 1992–1995. *MMWR* 1998;47:497–504.
20. CDC. Abortion surveillance: preliminary analysis—United States, 1996. *MMWR* 1998;47: 1025–8, 1035.
21. Benschoff J. Beyond Roe, after Casey: the present and future of a “fundamental” right. *Womens Health Issues* 1993;3:162–70.
22. Ellertson C. Mandatory parental involvement in minors' abortions: effects of the laws in Minnesota, Missouri, and Indiana. *Am J Public Health* 1997;87:1367–74.
23. Koonin LM, Smith JC, Ramick M, Lawson HW. Abortion surveillance—United States, 1989. In: CDC surveillance summaries (September 1992). *MMWR* 1992;41(No. SS-5):1–33.
24. Henshaw SK, Silverman J. The characteristics and prior contraceptive use of U.S. abortion patients. *Fam Plann Perspect* 1988;20:158–68.
25. Henshaw SK, Kost K. Abortion patients in 1994–1995: characteristics and contraceptive use. *Fam Plann Perspect* 1996;28:140–58.
26. Alan Guttmacher Institute. Late-term abortions: legal considerations. New York and Washington, DC: Alan Guttmacher Institute, 1997:1–4.
27. Epner JEG, Jonas HS, Seckinger DL. Late-term abortion. *JAMA* 1998;280:724–9.
28. Peyron R, Aubeny E, Targosz V, et al. Termination of pregnancy with mifepristone (RU 486) and the orally active prostaglandin misoprostol. *N Engl J Med* 1993;328:1509–13.
29. Winikoff B. Acceptability of medical abortion in early pregnancy. *Fam Plann Perspect* 1995;27:142–8, 185.
30. Hausknecht RU. Methotrexate and misoprostol to terminate early pregnancy. *N Engl J Med* 1995;333:537–40.
31. CDC. Handbook on the reporting of induced termination of pregnancy (reprinted from 1988; includes revised instructions and reporting form, 1997). Hyattsville, MD: US Department of Health and Human Services, CDC, National Center for Health Statistics, 1998:1–18; DHHS publication no. (PHS)98-1117.
32. Population Council. U.S. mifepristone clinical trials: summary of findings. New York: Population Council, 1997.
33. Creinin MD, Vittinghoff E, Schaff E, Klaisle C, Darney PD, Dean C. Medical abortion with oral methotrexate and vaginal misoprostol. *Obstet Gynecol* 1997;90:611–6.

34. Fielding WL, Sachtleben MR, Friedman LM, Friedman EA. Comparison of women seeking early and late abortion. *Am J Obstet Gynecol* 1978;131:304–10.
35. Tietze C, Henshaw SK. *Induced abortion: a world review*. 6th ed. New York: The Alan Guttmacher Institute, 1986:29–52.
36. CDC. *Abortion surveillance, 1974*. Atlanta: US Department of Health and Human Services, Public Health Service, CDC, 1976:1–49.
37. Cates W Jr, Schulz KF, Grimes DA, et al. Dilatation and evacuation procedures and second-trimester abortion: the role of physician skill and hospital setting. *JAMA* 1982;248:559–63.
38. Grimes DA. Second-trimester abortions in the United States. *Fam Plann Perspect* 1984;16:260–6.
39. Atrash HK, Lawson HW, Smith JC. Legal abortion in the US: trends and mortality. *Contemp Ob Gyn* 1990;35:58–69.
40. Cates W Jr, RoCHAT RW, Smith JC, Tyler CW. Trends in national abortion mortality, United States, 1940–1974: implications for prevention of future abortion deaths. *Advances in Planned Parenthood* 1976;11:106–13.
41. Atrash HK, MacKay HT, Binkin NJ, Hogue CJR. Legal abortion mortality in the United States: 1972 to 1982. *Am J Obstet Gynecol* 1987;156:605–12.
42. Lawson HW, Frye A, Atrash HK, Smith JC, Shulman HB, Ramick M. Abortion mortality, United States, 1972 through 1987. *Am J Obstet Gynecol* 1994;171:1365–72.
43. Jones EF, Forrest JD. Contraceptive failure rates based on the 1988 NSFG. *Fam Plann Perspect* 1992;24:12–9.
44. Torres A, Forrest JD. Why do women have abortions? *Fam Plann Perspect* 1988;20:169–76.
45. Gold RB, Darroch JE, Frost JJ. Mainstreaming contraceptive services in managed care—five states' experiences. *Fam Plann Perspect* 1998;30:204–11.
46. Westoff CF. Contraceptive paths toward the reduction of unintended pregnancy and abortion. *Fam Plann Perspect* 1988;20:4–13.
47. Forrest JD. Epidemiology of unintended pregnancy and contraceptive use. *Am J Obstet Gynecol* 1994;170(suppl):1485–8.



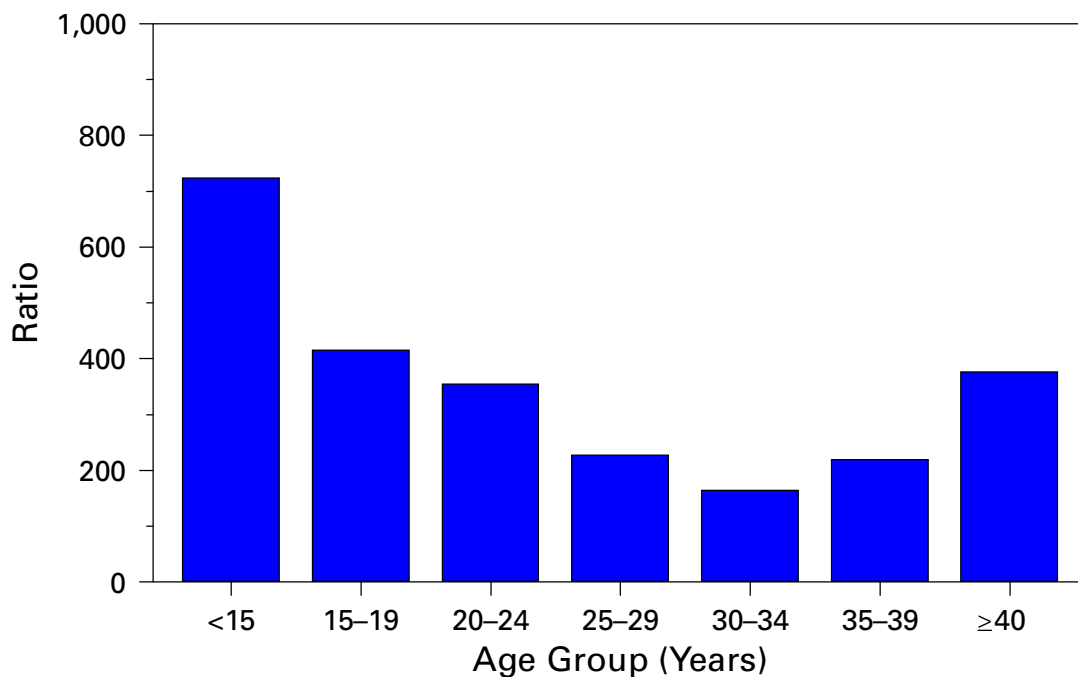
**FIGURE 1. Number, ratio,\* and rate† of legal abortions performed, by year — United States, 1970–1996**



\*Number of abortions per 1,000 live births.

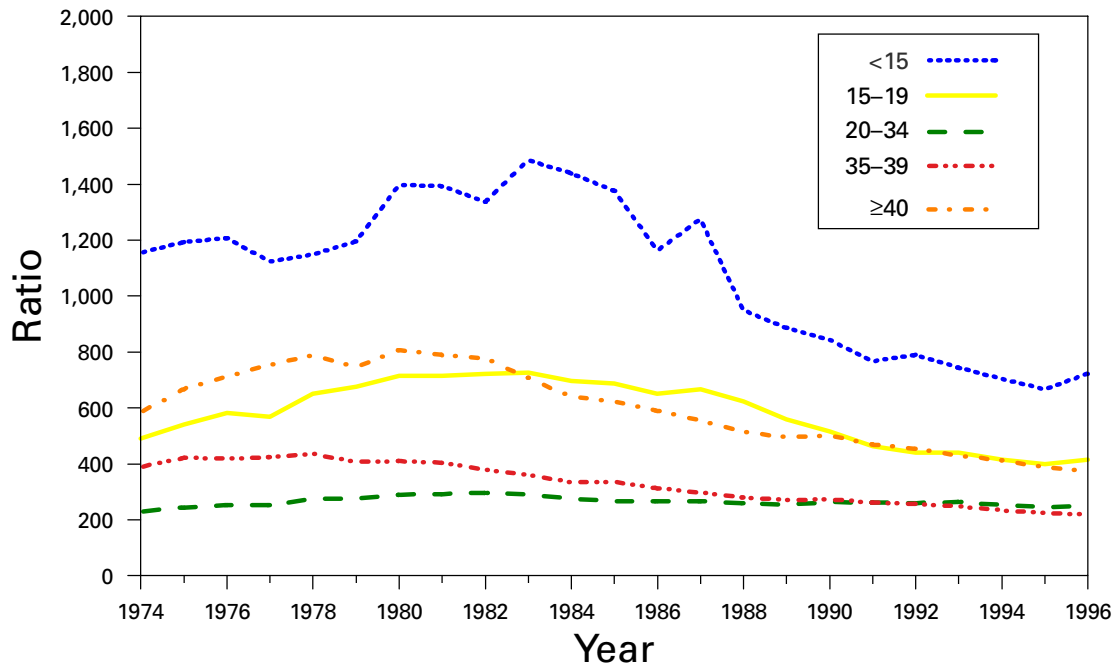
†Number of abortions per 1,000 women 15–44 years of age.

**FIGURE 2. Abortion ratio,\* by age group of women who obtained a legal abortion — United States, 1996**



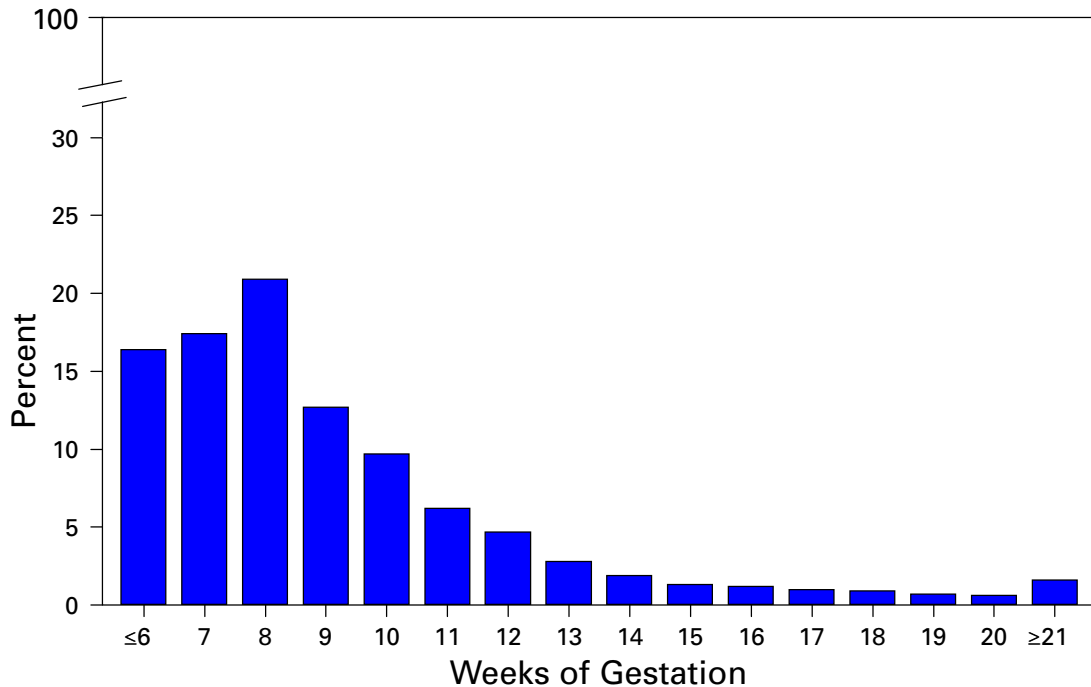
\*Number of abortions per 1,000 live births.

**FIGURE 3. Abortion ratio,\* by age group† of women who obtained a legal abortion — United States, 1974–1996**

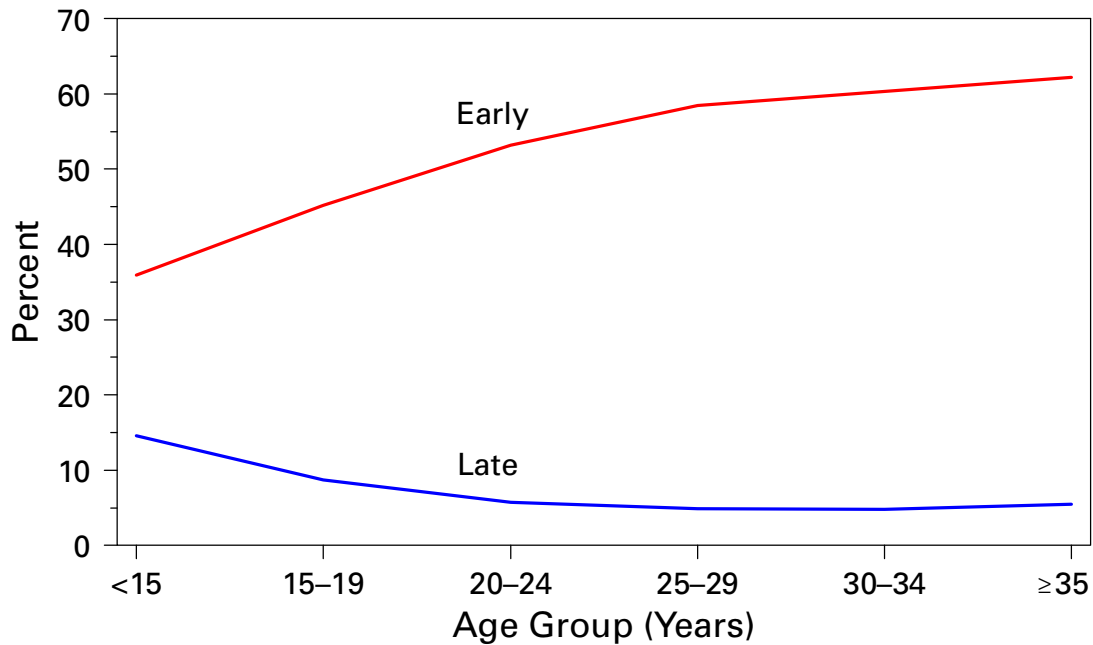


\*Number of abortions per 1,000 live births.  
 †In years.

**FIGURE 4. Percentage of legal induced abortions, by known single weeks of gestation at the time of abortion — United States, 1996**



**FIGURE 5. Percentage\* of women who obtained early<sup>†</sup> or late<sup>§</sup> abortions, by age group of women — United States, 1996**

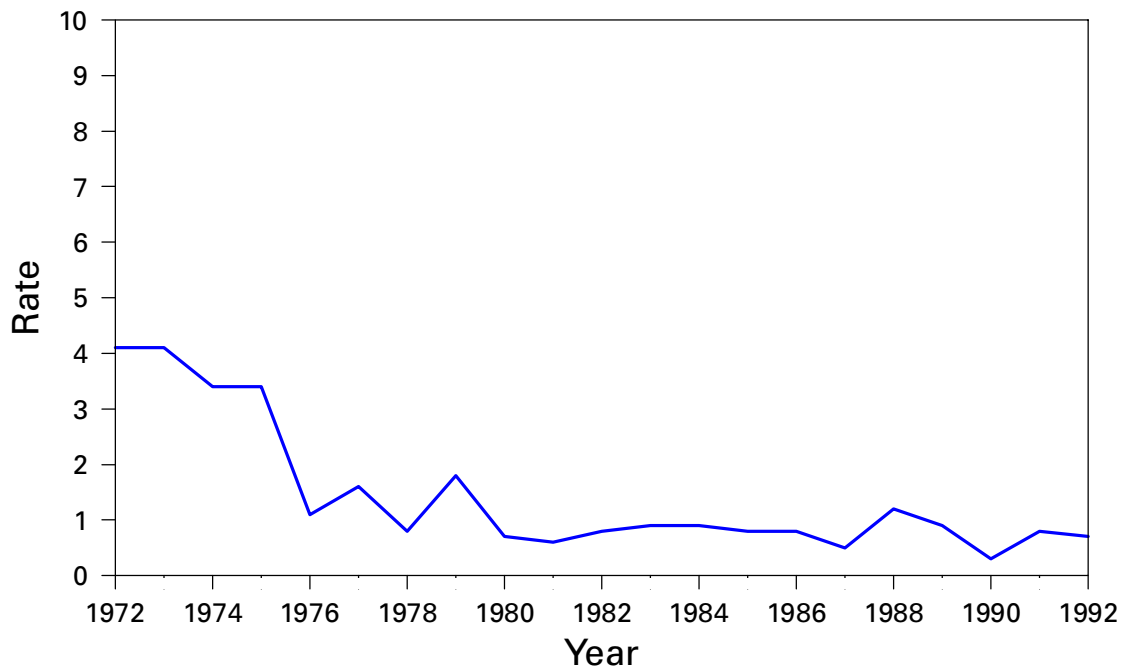


\*Based on total known weeks of gestation.

<sup>†</sup>≤8 weeks of gestation.

<sup>§</sup>≥16 weeks of gestation.

**FIGURE 6. Case-fatality rate\* for legal abortions, by year — United States, 1972-1992**



\*Legal induced abortion-related deaths per 100,000 legal induced abortions.

**TABLE 1. Characteristics of women who obtained legal abortions — United States, selected years, 1972–1996**

Characteristic	1972	1973	1976	1980	1985	1990	1992	1993	1994	1995	1996
<b>Reported no. of legal abortions</b>	586,760	615,831	988,267	1,297,606	1,328,570	1,429,577	1,359,145	1,330,414	1,267,415	1,210,883	1,221,585
	<b>Percent distribution*</b>										
<b>Residence</b>											
In-state	56.2	74.8	90.0	92.6	92.4	91.8	92.0	91.4	91.5	91.7	91.9
Out-of-state	43.8	25.2	10.0	7.4	7.6	8.2	8.0	8.6	8.5	8.3	8.1
<b>Age (yrs)</b>											
≤19	32.6	32.7	32.1	29.2	26.3	22.4	20.1	20.0	20.2	20.1	20.3
20–24	32.5	32.0	33.3	35.5	34.7	33.2	34.5	34.4	33.5	32.5	31.9
≥25	34.9	35.3	34.6	35.3	39.0	44.4	45.4	45.6	46.3	47.4	47.9
<b>Race</b>											
White	77.0	72.5	66.6	69.9	66.7	64.8	61.5	60.9	60.5	59.5	59.1
Black	23.0 <sup>†</sup>	27.5 <sup>†</sup>	33.4 <sup>†</sup>	30.1 <sup>†</sup>	29.8	31.8	33.9	34.9	34.7	35.0	35.2
Other <sup>§</sup>	—	—	—	—	3.5	3.4	4.6	4.2	4.8	5.5	5.7
<b>Hispanic origin</b>											
Hispanic	—	—	—	—	—	9.8	15.2	14.7	14.5	15.4	16.1
Non-Hispanic	—	—	—	—	—	90.2	84.8	85.3	85.5	84.6	83.9
<b>Marital Status</b>											
Married	29.7	27.4	24.6	23.1	19.3	21.7	20.8	20.4	19.9	19.7	19.6
Unmarried	70.3	72.6	75.4	76.9	80.7	78.3	79.2	79.6	80.1	80.3	80.4
<b>No. of live births<sup>¶</sup></b>											
0	49.4	48.6	47.7	58.4	56.3	49.2	45.9	46.3	46.2	45.2	44.2
1	18.2	18.8	20.7	19.4	21.6	24.4	25.9	26.0	25.9	26.5	26.8
2	13.3	14.2	15.4	13.7	14.5	16.9	18.0	17.8	17.8	18.0	18.4
3	8.7	8.7	8.3	5.3	5.1	6.1	6.7	6.6	6.7	6.8	7.0
≥4	10.4	9.7	7.9	3.2	2.5	3.4	3.5	3.3	3.4	3.5	3.6
<b>Type of procedure</b>											
Curettage	88.6	88.4	92.8	95.5	97.5	98.8	98.9	99.0	99.1	98.9	98.8
Suction curettage	65.2	74.9	82.6	89.8	94.6	96.0	97.0	96.4	96.5	96.6	96.5
Sharp curettage	23.4	13.5	10.2	5.7	2.9	2.8	1.9	2.6	2.6	2.3	2.3
Intrauterine instillation	10.4	10.4	6.0	3.1	1.7	0.8	0.7	0.6	0.5	0.5	0.4
Other**	1.0	1.2	1.2	1.4	0.8	0.4	0.4	0.4	0.4	0.6	0.8
<b>Weeks of gestation</b>											
≤ 8	34.0	36.1	47.0	51.7	50.3	51.6	52.1	52.3	53.7	54.0	54.6
≤6	—	—	—	—	—	—	14.3 <sup>††</sup>	14.7 <sup>§§</sup>	15.7 <sup>¶¶</sup>	15.7 <sup>¶¶</sup>	16.4 <sup>***</sup>
7	—	—	—	—	—	—	15.6 <sup>††</sup>	16.2 <sup>§§</sup>	16.5 <sup>¶¶</sup>	17.1 <sup>¶¶</sup>	17.4 <sup>***</sup>
8	—	—	—	—	—	—	22.2 <sup>††</sup>	21.6 <sup>§§</sup>	21.6 <sup>¶¶</sup>	21.2 <sup>¶¶</sup>	20.9 <sup>***</sup>
9–10	30.7	29.4	28.1	26.2	26.6	25.3	24.2	24.4	23.5	23.1	22.6
11–12	17.5	17.9	14.4	12.2	12.5	11.7	12.0	11.6	10.9	10.9	11.0
13–15	8.4	6.9	4.5	5.1	5.9	6.4	6.0	6.3	6.3	6.3	6.0
16–20	8.2	8.0	5.1	3.9	3.9	4.0	4.2	4.1	4.3	4.3	4.3
≥21	1.2	1.7	0.9	0.9	0.8	1.0	1.5	1.3	1.3	1.4	1.5

\* Based on known values in data from all areas reporting a given characteristic with no more than 15% unknowns. The number of areas reporting a given characteristic varied. For 1996, the number of areas included for residence was 45; age, 45; race, 35; ethnicity, 23; marital status, 34; the number of live births, 39; type of procedure, 41; and weeks of gestation, 40.

<sup>†</sup> Reported as black and other races.

<sup>§</sup> Includes all other races.

<sup>¶</sup> For 1972–1976, data indicate number of living children.

\*\* Includes hysterotomy and hysterectomy, medical (nonsurgical) procedures, and procedures reported as "other."

<sup>††</sup> Data are for 36 of 39 areas reporting weeks of gestation.

<sup>§§</sup> Data are for 38 of 41 areas reporting weeks of gestation.

<sup>¶¶</sup> Data are for 38 of 40 areas reporting weeks of gestation.

\*\*\* Data are for 37 of 40 areas reporting weeks of gestation.

— Not available.

**TABLE 2. Number, ratio,\* and rate† of legal abortions and source of reporting, by year — United States, 1970–1996**

Year	Total no. of legal abortions	Ratio	Rate	No. of areas reporting	
				Central health agency <sup>§</sup>	Hospital/Facilities¶
1970	193,491	52	5	18	7
1971	485,816	137	11	19	7
1972	586,760	180	13	21	8
1973	615,831	196	14	26	26
1974	763,476	242	17	37	15
1975	854,853	272	18	39	13
1976	988,267	312	21	41	11
1977	1,079,430	325	22	46	6
1978	1,157,776	347	23	48	4
1979	1,251,921	358	24	47	5
1980	1,297,606	359	25	47	5
1981	1,300,760	358	24	46	6
1982	1,303,980	354	24	46	6
1983	1,268,987	349	23	46	6
1984	1,333,521	364	24	44	8
1985	1,328,570	354	24	44	8
1986	1,328,112	354	23	43	9
1987	1,353,671	356	24	45	7
1988	1,371,285	352	24	45	7
1989	1,396,658	346	24	45	7
1990	1,429,577	345	24	46	6
1991	1,388,937	339	24	47	5
1992	1,359,145	335	23	47	5
1993	1,330,414	334	22	47	5
1994	1,267,415	321	21	47	5
1995	1,210,883	311	20	48	4
1996	1,221,585	314**	20	48	4

\* Number of abortions per 1,000 live births.

† Number of abortions per 1,000 women aged 15–44 years.

§ Abortion data reported by central health agencies, which include state health departments and the health departments of New York City and the District of Columbia.

¶ Abortion data reported by hospitals and/or other medical facilities in state.

\*\* Beginning in 1996, the ratio is based on births reported by CDC's National Center for Health Statistics.



**TABLE 3. Reported number,\* ratio,<sup>†</sup> and rate<sup>§</sup> of legal abortions and percentage of abortions obtained by out-of-state residents,<sup>¶</sup> by state of occurrence — United States, 1996**

State	Total no. of legal abortions	Ratio	Rate	Percentage of legal abortions obtained by out-of-state residents
Alabama	13,826	229	14	14.6
Alaska	2,139	213	15	0.8
Arizona	11,016	146	11	1.3
Arkansas	5,882	162	11	9.3
California	280,180**	519	39	—
Colorado	9,710	174	11	10.2
Connecticut	14,094	317	20	3.7
Delaware	4,482	441	26	—
Dist. of Columbia	13,674	— <sup>††</sup>	— <sup>§§</sup>	49.9
Florida	80,040	423	27	—
Georgia	35,790	314	20	9.4
Hawaii	4,916	267	19	0.3
Idaho	1,022	55	4	5.9
Illinois	53,613	293	20	7.2
Indiana	13,341	160	10	3.5
Iowa	7,602 <sup>¶¶</sup>	205	12	—
Kansas	10,685	292	19	40.9
Kentucky	7,000	133	8	20.6
Louisiana	11,865	182	12	—
Maine	2,615	190	9	2.9
Maryland	12,363	173	10	5.6
Massachusetts	29,293	365	21	5.9
Michigan	30,208	226	14	4.3
Minnesota	14,193	223	13	9.2
Mississippi	4,206	103	7	5.3
Missouri	11,629	158	10	10.9
Montana	2,763	255	15	16.7
Nebraska	5,214	224	14	19.8
Nevada	6,965	267	20	11.4
New Hampshire	2,300 <sup>¶¶</sup>	158	8	—
New Jersey	31,860	279	18	2.2
New Mexico	5,033	185	13	4.3
New York	152,991	580	37	—
City	109,331***	889	—	6.1 <sup>†††</sup>
State	43,660	310	—	4.9 <sup>†††</sup>
North Carolina	33,554	321	20	10.8
North Dakota	1,291	155	9	33.2
Ohio	36,530	241	15	7.4
Oklahoma	6,769 <sup>¶¶</sup>	147	10	—
Oregon	13,767	315	20	12.2
Pennsylvania	38,004	256	15	4.9
Rhode Island	5,437	430	24	18.5
South Carolina	9,326	182	11	6.2
South Dakota	901	86	6	22.8
Tennessee	17,989	244	15	18.9
Texas	91,470	277	21	4.3
Utah	3,639	86	8	9.8
Vermont	2,139	316	16	20.9

**TABLE 3. Reported number,\* ratio,<sup>†</sup> and rate<sup>§</sup> of legal abortions and percentage of abortions obtained by out-of-state residents,<sup>¶</sup> by state of occurrence — United States, 1996 — Continued**

<b>State</b>	<b>Total no. of legal abortions</b>	<b>Ratio</b>	<b>Rate</b>	<b>Percentage of legal abortions obtained by out-of-state residents</b>
Virginia	25,770	279	16	5.8
Washington	26,138	335	21	4.7
West Virginia	2,470	119	6	12.8
Wisconsin	13,673	204	12	4.1
Wyoming	208	33	2	6.3
<b>Total</b>	<b>1,221,585</b>	<b>314</b>	<b>20</b>	<b>8.1</b>

\*Abortion data reported by central health agencies unless otherwise specified.

<sup>†</sup>Abortions per 1,000 live births. Number of live births was obtained from CDC's National Center for Health Statistics (7).

<sup>§</sup>Abortions per 1,000 women aged 15–44 years. The number of women in this age group was obtained from the U.S. Department of Commerce, Bureau of the Census (special unpublished tabulations).

<sup>¶</sup>Based on number of abortions for which residence of women was known.

\*\* CDC estimate.

<sup>††</sup>>1,000 abortions per 1,000 live births.

<sup>§§</sup>>100 abortions per 1,000 women aged 15–44 years.

<sup>¶¶</sup>Reported by hospitals and/or other medical facilities in state.

\*\*\* Reported by the New York City Department of Health.

<sup>†††</sup>Percentage based on number reported as "out-of-reporting area."

— Not available.

**TABLE 4. Reported legal abortions, by age group of women who obtained abortions and state of occurrence — selected states,\* United States, 1996**

State	Age group (yrs)														Total <sup>f</sup>			
	<15		15-19		20-24		25-29		30-34		35-39		≥40		Unknown		No.	%
	No.	%	No.	%	No.	%	No.	%	No.	%	No.	%	No.	%				
Alabama	174	1.3	2,957	21.4	5,008	36.2	2,855	20.6	1,628	11.8	906	6.6	283	2.0	15	0.1	13,826	100.0
Alaska	9	0.4	377	17.6	770	36.0	472	22.1	305	14.3	153	7.2	50	2.3	3	0.1	2,139	100.0
Arizona	72	0.7	2,134	19.4	3,293	29.9	2,418	21.9	1,434	13.0	938	8.5	245	2.2	482	4.4	11,016	100.0
Arkansas	98	1.7	1,329	22.6	2,008	34.1	1,194	20.3	667	11.3	411	7.0	100	1.7	75	1.3	5,882	100.0
Colorado	78	0.8	2,207	22.7	2,905	29.9	2,006	20.7	1,286	13.2	879	9.1	281	2.9	68	0.7	9,710	100.0
Connecticut	103	0.7	3,042	21.6	4,344	30.8	3,151	22.4	1,918	13.6	1,070	7.6	294	2.1	172	1.2	14,094	100.0
Georgia	410	1.1	6,776	18.9	11,417	31.9	8,476	23.7	5,077	14.2	2,673	7.5	748	2.1	213	0.6	35,790	100.0
Hawaii	38	0.8	1,093	22.2	1,496	30.4	1,028	20.9	670	13.6	447	9.1	142	2.9	2	0.0	4,916	100.0
Idaho	15	1.5	265	25.9	284	27.8	194	19.0	135	13.2	95	9.3	34	3.3	0	0.0	1,022	100.0
Illinois	488	0.9	11,474	21.4	17,244	32.2	11,870	22.1	6,875	12.8	3,999	7.5	1,302	2.4	361	0.7	53,613	100.0
Indiana	119	0.9	2,838	21.3	4,583	34.4	2,798	21.0	1,681	12.6	952	7.1	270	2.0	100	0.7	13,341	100.0
Kansas	94	0.9	2,500	23.4	3,373	31.6	2,262	21.2	1,318	12.3	873	8.2	255	2.4	10	0.1	10,685	100.0
Kentucky	72	1.0	1,507	21.5	2,360	33.7	1,543	22.0	807	11.5	481	6.9	136	1.9	94	1.3	7,000	100.0
Louisiana	143	1.2	2,487	21.0	4,075	34.3	2,549	21.5	1,413	11.9	875	7.4	278	2.3	45	0.4	11,865	100.0
Maine	21	0.8	607	23.2	768	29.4	546	20.9	326	12.5	243	9.3	75	2.9	29	1.1	2,615	100.0
Maryland	129	1.0	2,405	19.5	3,862	31.2	3,028	24.5	1,765	14.3	936	7.6	238	1.9	0	0.0	12,363	100.0
Massachusetts	148	0.5	4,465	15.2	8,230	28.1	6,553	22.4	4,572	15.6	2,652	9.1	896	3.1	1,777	6.1	29,293	100.0
Michigan	218	0.7	6,188	20.5	9,777	32.4	6,888	22.8	4,023	13.3	2,381	7.9	701	2.3	32	0.1	30,208	100.0
Minnesota	79	0.6	2,632	18.5	4,389	30.9	3,268	23.0	2,030	14.3	1,320	9.3	392	2.8	83	0.6	14,193	100.0
Mississippi	60	1.4	806	19.2	1,596	37.9	879	20.9	519	12.3	258	6.1	85	2.0	3	0.1	4,206	100.0
Missouri	118	1.0	2,166	18.6	3,659	31.5	2,552	21.9	1,740	15.0	1,054	9.1	317	2.7	23	0.2	11,629	100.0
Montana	20	0.7	663	24.0	841	30.4	529	19.1	387	14.0	236	8.5	87	3.1	0	0.0	2,763	100.0
Nebraska	25	0.5	1,138	21.8	1,749	33.5	1,087	20.8	659	12.6	424	8.1	122	2.3	10	0.2	5,214	100.0
Nevada	56	0.8	1,197	17.2	1,902	27.3	1,654	23.7	1,108	15.9	703	10.1	212	3.0	133	1.9	6,965	100.0
New Jersey	198	0.6	6,041	19.0	10,218	32.1	7,513	23.6	4,533	14.2	2,503	7.9	818	2.6	36	0.1	31,860	100.0
New Mexico	55	1.1	1,139	22.6	1,574	31.3	1,040	20.7	651	12.9	401	8.0	149	3.0	24	0.5	5,033	100.0
New York	1,106	0.7	27,955	18.3	44,467	29.1	37,150	24.3	24,436	16.0	13,447	8.8	3,986	2.6	444	0.3	152,991	100.0
City	784	0.7	18,561	17.0	31,144	28.5	27,444	25.1	18,367	16.8	9,825	9.0	2,870	2.6	336	0.3	109,331	100.0
State	322	0.7	9,394	21.5	13,323	30.5	9,706	22.2	6,069	13.9	3,622	8.3	1,116	2.6	108	0.2	43,660	100.0
North Carolina	284	0.8	6,584	19.6	11,419	34.0	7,578	22.6	4,085	12.2	2,300	6.9	704	2.1	600	1.8	33,554	100.0
North Dakota	5	0.4	329	25.5	421	32.6	245	19.0	145	11.2	109	8.4	37	2.9	0	0.0	1,291	100.0
Ohio	200	0.5	6,382	17.5	12,200	33.4	8,733	23.9	4,695	12.9	3,055	8.4	1,020	2.8	245	0.7	36,530	100.0
Oregon	88	0.6	3,020	21.9	4,221	30.7	3,052	22.2	1,869	13.6	1,129	8.2	367	2.7	21	0.2	13,767	100.0
Pennsylvania	338	0.9	7,098	18.7	12,121	31.9	8,749	23.0	5,319	14.0	3,335	8.8	1,044	2.7	0	0.0	38,004	100.0
Rhode Island	36	0.7	1,037	19.1	1,729	31.8	1,197	22.0	797	14.7	484	8.9	155	2.9	2	0.0	5,437	100.0
South Carolina	95	1.0	1,949	20.9	3,108	33.3	1,971	21.1	1,271	13.6	726	7.8	201	2.2	5	0.1	9,326	100.0
South Dakota	6	0.7	253	28.1	279	31.0	144	16.0	107	11.9	88	9.8	23	2.6	1	0.1	901	100.0
Tennessee	175	1.0	3,514	19.5	6,217	34.6	4,085	22.7	2,347	13.0	1,266	7.0	381	2.1	4	0.0	17,989	100.0
Texas	395	0.4	16,586	18.1	30,500	33.3	21,990	24.0	12,213	13.4	7,159	7.8	2,349	2.6	278	0.3	91,470	100.0

**TABLE 4. Reported legal abortions, by age group of women who obtained abortions and state of occurrence — selected states,\* United States, 1996 — Continued**

State	Age group (yrs)																Total <sup>†</sup>	
	<15		15-19		20-24		25-29		30-34		35-39		≥40		Unknown		No.	%
	No.	%	No.	%	No.	%	No.	%	No.	%	No.	%	No.	%	No.	%	No.	%
Utah	29	0.8	737	20.3	1,156	31.8	812	22.3	534	14.7	270	7.4	97	2.7	4	0.1	3,639	100.0
Vermont	11	0.5	492	23.0	676	31.6	387	18.1	273	12.8	218	10.2	82	3.8	0	0.0	2,139	100.0
Virginia	164	0.6	5,110	19.8	7,965	30.9	6,020	23.4	3,691	14.3	2,084	8.1	607	2.4	129	0.5	25,770	100.0
Washington	165	0.6	5,275	20.2	7,839	30.0	5,986	22.9	3,757	14.4	2,321	8.9	755	2.9	40	0.2	26,138	100.0
West Virginia	31	1.3	613	24.8	851	34.5	487	19.7	280	11.3	158	6.4	50	2.0	0	0.0	2,470	100.0
Wisconsin <sup>§</sup>	87	0.7	2,596	19.8	4,348	33.2	2,921	22.3	1,781	13.6	1,053	8.0	322	2.5	0	0.0	13,108	100.0
Wyoming	2	1.0	45	21.6	61	29.3	37	17.8	31	14.9	27	13.0	5	2.4	0	0.0	208	100.0
<b>Total</b>	<b>6,257</b>	<b>0.8</b>	<b>160,008</b>	<b>19.4</b>	<b>261,303</b>	<b>31.6</b>	<b>189,897</b>	<b>23.0</b>	<b>115,158</b>	<b>13.9</b>	<b>67,092</b>	<b>8.1</b>	<b>20,695</b>	<b>2.5</b>	<b>5,563</b>	<b>0.7</b>	<b>825,973</b>	<b>100.0</b>
Ratio <sup>¶</sup>	723		415		355		227		165		220		376				271	
Rate <sup>**</sup>	2		22		38		26		14		8		2				16	

\* Data from 44 states and New York City; excludes one area where unknown age was >15%.

† Percentages might not add to 100.0 because of rounding.

§ Includes residents only.

¶ Calculated as the number of legal abortions obtained by women of a given age group per 1,000 live births to women of the same age group for these states. For each state, data for women of unknown age were distributed according to the known age distribution for that state.

\*\* Calculated as the number of legal abortions obtained by women of a given age group per 1,000 women of the same age group for these states. For each state, data for women of unknown age were distributed according to the known age distribution for that state.

**TABLE 5. Reported legal abortions obtained by adolescents, by known age and state of occurrence — selected states,\* United States, 1996**

State	Age (yrs)										Total <sup>†</sup>			
	<15		15		16		17		18		19		No.	%
	No.	%	No.	%	No.	%	No.	%	No.	%	No.	%		
Alabama	174	5.6	226	7.2	402	12.8	482	15.4	841	26.9	1,006	32.1	3,131	100.0
Alaska	9	2.3	19	4.9	68	17.6	67	17.4	100	25.9	123	31.9	386	100.0
Arizona	72	3.3	168	7.6	305	13.8	424	19.2	584	26.5	653	29.6	2,206	100.0
Arkansas	98	6.9	109	7.6	168	11.8	241	16.9	403	28.2	408	28.6	1,427	100.0
Colorado	78	3.4	174	7.6	338	14.8	443	19.4	594	26.0	658	28.8	2,285	100.0
Connecticut	103	3.3	200	6.4	430	13.7	698	22.2	836	26.6	878	27.9	3,145	100.0
Georgia	410	5.7	556	7.7	937	13.0	1,212	16.9	1,932	26.9	2,139	29.8	7,186	100.0
Hawaii	38	3.4	106	9.4	146	12.9	229	20.2	288	25.5	324	28.6	1,131	100.0
Idaho	15	5.4	21	7.5	37	13.2	41	14.6	92	32.9	74	26.4	280	100.0
Indiana	119	4.0	201	6.8	379	12.8	426	14.4	855	28.9	977	33.0	2,957	100.0
Kansas	94	3.6	195	7.5	403	15.5	488	18.8	680	26.2	734	28.3	2,594	100.0
Kentucky	72	4.6	126	8.0	191	12.1	262	16.6	412	26.1	516	32.7	1,579	100.0
Louisiana	143	5.4	207	7.9	329	12.5	435	16.5	732	27.8	784	29.8	2,630	100.0
Maine	21	3.3	42	6.7	86	13.7	112	17.8	162	25.8	205	32.6	628	100.0
Maryland	129	5.1	198	7.8	336	13.3	440	17.4	659	26.0	772	30.5	2,534	100.0
Massachusetts	148	3.2	286	6.2	556	12.1	766	16.6	1,316	28.5	1,541	33.4	4,613	100.0
Michigan	218	3.4	485	7.6	785	12.3	1,160	18.1	1,832	28.6	1,926	30.1	6,406	100.0
Minnesota	79	2.9	177	6.5	374	13.8	470	17.3	781	28.8	830	30.6	2,711	100.0
Mississippi	60	6.9	65	7.5	115	13.3	99	11.4	243	28.1	284	32.8	866	100.0
Missouri	118	5.2	175	7.7	303	13.3	345	15.1	653	28.6	690	30.2	2,284	100.0
Montana	20	2.9	48	7.0	95	13.9	133	19.5	194	28.4	193	28.3	683	100.0
Nebraska	25	2.1	66	5.7	159	13.7	187	16.1	350	30.1	376	32.3	1,163	100.0
Nevada	56	4.5	80	6.4	186	14.8	240	19.2	331	26.4	360	28.7	1,253	100.0
New Jersey	198	3.2	409	6.6	742	11.9	1,269	20.3	1,711	27.4	1,910	30.6	6,239	100.0
New Mexico	55	4.6	101	8.5	161	13.5	263	22.0	285	23.9	329	27.6	1,194	100.0
New York	1,106	3.8	1,991	6.9	3,721	12.8	5,674	19.5	7,799	26.8	8,770	30.2	29,061	100.0
City	784	4.1	1,387	7.2	2,496	12.9	3,747	19.4	5,104	26.4	5,827	30.1	19,345	100.0
State	322	3.3	604	6.2	1,225	12.6	1,927	19.8	2,695	27.7	2,943	30.3	9,716	100.0
North Carolina	284	4.1	508	7.4	848	12.3	1,121	16.3	1,872	27.3	2,235	32.5	6,868	100.0
North Dakota	5	1.5	24	7.2	52	15.6	62	18.6	85	25.4	106	31.7	334	100.0
Ohio	200	3.0	380	5.8	841	12.8	1,203	18.3	1,745	26.5	2,213	33.6	6,582	100.0
Oregon	88	2.8	200	6.4	444	14.3	585	18.8	816	26.3	975	31.4	3,108	100.0
Pennsylvania	338	4.5	549	7.4	838	11.3	1,070	14.4	2,121	28.5	2,520	33.9	7,436	100.0
Rhode Island	36	3.4	52	4.8	100	9.3	131	12.2	373	34.8	381	35.5	1,073	100.0
South Carolina	95	4.6	149	7.3	242	11.8	426	20.8	536	26.2	596	29.2	2,044	100.0
South Dakota	6	2.3	15	5.8	37	14.3	71	27.4	59	22.8	71	27.4	259	100.0
Tennessee	175	4.7	321	8.7	459	12.4	588	15.9	993	26.9	1,153	31.3	3,689	100.0

**TABLE 5. Reported legal abortions obtained by adolescents, by known age and state of occurrence — selected states,\* United States, 1996 — Continued**

State	Age (yrs)												Total <sup>†</sup>	
	<15		15		16		17		18		19			
	No.	%	No.	%	No.	%	No.	%	No.	%	No.	%	No.	%
Texas	395	2.3	931	5.5	1,999	11.8	3,150	18.6	4,681	27.6	5,825	34.3	16,981	100.0
Utah	29	3.8	42	5.5	85	11.1	109	14.2	244	31.9	257	33.6	766	100.0
Vermont	11	2.2	35	7.0	63	12.5	101	20.1	130	25.8	163	32.4	503	100.0
Virginia	164	3.1	357	6.8	675	12.8	921	17.5	1,573	29.8	1,584	30.0	5,274	100.0
Washington	165	3.0	400	7.4	735	13.5	1,127	20.7	1,420	26.1	1,593	29.3	5,440	100.0
West Virginia	31	4.8	50	7.8	88	13.7	111	17.2	172	26.7	192	29.8	644	100.0
Wisconsin <sup>§</sup>	87	3.2	192	7.2	349	13.0	462	17.2	773	28.8	820	30.6	2,683	100.0
Wyoming	2	4.3	5	10.6	8	17.0	14	29.8	10	21.3	8	17.0	47	100.0
<b>Total</b>	<b>5,769</b>	<b>3.7</b>	<b>10,641</b>	<b>6.9</b>	<b>19,615</b>	<b>12.7</b>	<b>27,858</b>	<b>18.1</b>	<b>42,268</b>	<b>27.4</b>	<b>48,152</b>	<b>31.2</b>	<b>154,303</b>	<b>100.0</b>
Ratio <sup>¶</sup>	708		511		446		388		423		382		416	
Rate <sup>**</sup>	2		8		14		20		32		35		16	

\* Data from 43 states and New York City.

† Percentages might not add to 100.0 because of rounding.

§ Includes residents only.

¶ Calculated as the number of legal abortions obtained by women of a given age per 1,000 live births to women of the same age group for these states. For each state, data for women of unknown age were distributed according to the known age distribution for that state.

\*\* Calculated as the number of legal abortions obtained by women of a given age per 1,000 women of the same age group for these states. For each state, data for women of unknown age were distributed according to the known age distribution for that state.

**TABLE 6. Reported legal abortions, by weeks of gestation\* and state of occurrence — selected states,† United States, 1996**

State	Weeks of gestation														Total <sup>§</sup>	
	≤8		9–10		11–12		13–15		16–20		≥21		Unknown			
	No.	%	No.	%	No.	%	No.	%	No.	%	No.	%	No.	%	No.	%
Alabama	6,895	49.9	3,391	24.5	1,597	11.6	1,290	9.3	478	3.5	91	0.7	84	0.6	13,826	100.0
Alaska <sup>¶</sup>	933	43.6	566	26.5	387	18.1	214	10.0	23	1.1	9	0.4	7	0.3	2,139	100.0
Arizona**	5,529	50.2	2,652	24.1	1,151	10.4	920	8.4	428	3.9	34	0.3	302	2.7	11,016	100.0
Arkansas	2,926	49.7	1,233	21.0	631	10.7	352	6.0	233	4.0	15	0.3	492	8.4	5,882	100.0
Colorado	3,598	37.1	3,131	32.2	1,490	15.3	809	8.3	470	4.8	147	1.5	65	0.7	9,710	100.0
Connecticut**	7,673 <sup>††</sup>	54.4	3,173 <sup>††</sup>	22.5	1,540 <sup>††</sup>	10.9	950	6.7	348	2.5	6	0.0	404	2.9	14,094	100.0
Dist. of Columbia	2,760	41.0	1,938	28.8	1,007	15.0	480	7.1	218	3.2	3	0.0	328	4.9	6,734	100.0
Georgia	16,823	47.0	8,382	23.4	4,584	12.8	2,322	6.5	2,239	6.3	1,290	3.6	150	0.4	35,790	100.0
Hawaii**	2,375	48.3	1,221	24.8	559	11.4	290	5.9	264	5.4	39	0.8	168	3.4	4,916	100.0
Idaho	523	51.2	312	30.5	135	13.2	35	3.4	10	1.0	5	0.5	2	0.2	1,022	100.0
Indiana	8,490	63.6	2,935	22.0	1,306	9.8	222	1.7	133	1.0	0	0.0	255	1.9	13,341	100.0
Kansas**	6,019	56.3	1,596	14.9	987	9.2	563	5.3	552	5.2	895	8.4	73	0.7	10,685	100.0
Kentucky	3,383	48.3	1,563	22.3	886	12.7	485	6.9	424	6.1	123	1.8	136	1.9	7,000	100.0
Louisiana	4,657	39.2	3,370	28.4	1,626	13.7	1,078	9.1	687	5.8	335	2.8	112	0.9	11,865	100.0
Maine**	1,422	54.4	874	33.4	291	11.1	16	0.6	1	0.0	1	0.0	10	0.4	2,615	100.0
Maryland**	7,837	63.4	2,524	20.4	1,282	10.4	501	4.1	211	1.7	8	0.1	0	0.0	12,363	100.0
Michigan	18,639	61.7	5,335	17.7	2,719	9.0	2,029	6.7	1,259	4.2	213	0.7	14	0.0	30,208	100.0
Minnesota**	8,406	59.2	2,561	18.0	1,471	10.4	814	5.7	649	4.6	105	0.7	187	1.3	14,193	100.0
Mississippi	1,918	45.6	1,208	28.7	633	15.0	337	8.0	41	1.0	13	0.3	56	1.3	4,206	100.0
Missouri <sup>§§</sup>	5,473	47.1	3,286	28.3	1,676	14.4	703	6.0	396	3.4	87	0.7	8	0.1	11,629	100.0
Montana**	1,765	63.9	426	15.4	286	10.4	118	4.3	107	3.9	42	1.5	19	0.7	2,763	100.0
Nevada	3,857	55.4	1,339	19.2	911	13.1	450	6.5	327	4.7	41	0.6	40	0.6	6,965	100.0
New Jersey	16,445	51.6	5,845	18.3	2,168	6.8	2,963	9.3	3,250	10.2	798	2.5	391	1.2	31,860	100.0
New York	81,844	53.5	31,490	20.6	14,650	9.6	7,645	5.0	6,895	4.5	2,917	1.9	7,550	4.9	152,991	100.0
City	61,385	56.1	21,877	20.0	10,314	9.4	5,761	5.3	5,968	5.5	2,705	2.5	1,321	1.2	109,331	100.0
State	20,459	46.9	9,613	22.0	4,336	9.9	1,884	4.3	927	2.1	212	0.5	6,229	14.3	43,660	100.0
North Dakota**	750	58.1	258	20.0	153	11.9	119	9.2	8	0.6	1	0.1	2	0.2	1,291	100.0
Oregon**	8,105	58.9	2,796	20.3	1,249	9.1	713	5.2	642	4.7	242	1.8	20	0.1	13,767	100.0
Pennsylvania	19,152	50.4	9,653	25.4	4,640	12.2	2,639	6.9	1,628	4.3	280	0.7	12	0.0	38,004	100.0
Rhode Island	3,049	56.1	1,297	23.9	557	10.2	316	5.8	174	3.2	16	0.3	28	0.5	5,437	100.0
South Carolina	5,605	60.1	2,552	27.4	1,044	11.2	32	0.3	32	0.3	26	0.3	35	0.4	9,326	100.0
South Dakota	474	52.6	235	26.1	192	21.3	0	0.0	0	0.0	0	0.0	0	0.0	901	100.0
Tennessee**	9,468	52.6	4,821	26.8	2,780	15.5	773	4.3	60	0.3	30	0.2	57	0.3	17,989	100.0
Texas**	51,208	56.0	18,745	20.5	9,368	10.2	6,015	6.6	4,071	4.5	1,559	1.7	504	0.6	91,470	100.0
Utah	1,985	54.5	938	25.8	347	9.5	187	5.1	154	4.2	5	0.1	23	0.6	3,639	100.0

**TABLE 6. Reported legal abortions, by weeks of gestation\* and state of occurrence — selected states,<sup>†</sup> United States, 1996 — Continued**

State	Weeks of gestation														Total <sup>§</sup>	
	≤8		9–10		11–12		13–15		16–20		≥21		Unknown			
	No.	%	No.	%	No.	%	No.	%	No.	%	No.	%	No.	%	No.	%
Vermont	1,341	62.7	499	23.3	214	10.0	74	3.5	5	0.2	6	0.3	0	0.0	2,139	100.0
Virginia**	16,354	63.5	5,907	22.9	2,585	10.0	381	1.5	252	1.0	80	0.3	211	0.8	25,770	100.0
Washington**	13,463	51.5	6,042	23.1	2,858	10.9	1,815	6.9	1,334	5.1	500	1.9	126	0.5	26,138	100.0
West Virginia <sup>¶</sup>	532	21.5	1,064	43.1	528	21.4	210	8.5	45	1.8	2	0.1	89	3.6	2,470	100.0
Wisconsin <sup>¶¶</sup>	6,854	52.3	3,217	24.5	1,565	11.9	762	5.8	542	4.1	168	1.3	0	0.0	13,108	100.0
Wyoming <sup>¶¶</sup>	116	55.8	57	27.4	30	14.4	5	2.4	0	0.0	0	0.0	0	0.0	208	100.0
<b>Total</b>	<b>358,646</b>	<b>53.6</b>	<b>148,432</b>	<b>22.2</b>	<b>72,083</b>	<b>10.8</b>	<b>39,627</b>	<b>5.9</b>	<b>28,590</b>	<b>4.3</b>	<b>10,132</b>	<b>1.5</b>	<b>11,960</b>	<b>1.8</b>	<b>669,470</b>	<b>100.0</b>

\* Data for legal abortions obtained at ≤8 weeks of gestation are presented in Table 7 by single weeks of gestation.

† Data from 38 states, the District of Columbia, and New York City; excludes three states where unknown gestational age was >15%.

§ Percentages might not add to 100.0 because of rounding.

¶ Weeks of gestation were based on physicians' estimates only if date of last menstrual period was unknown.

\*\* Weeks of gestation were based on physicians' estimates.

†† Number obtained at ≤12 weeks of gestation was redistributed based on the national average.

§§ Weeks of gestation were based on physicians' estimates only if date of last menstrual period was unknown or unreliable.

¶¶ Includes residents only.



**TABLE 7. Reported legal abortions obtained at  $\leq 8$  weeks of gestation, by known weeks of gestation and state of occurrence — selected states,\* United States, 1996**

State	Weeks of gestation						Total obtained at $\leq 8$ weeks of gestation <sup>†</sup>	
	$\leq 6$		7		8		No.	%
	No.	%	No.	%	No.	%		
Alabama	2,099	15.2	2,457	17.8	2,339	16.9	6,895	49.9
Alaska <sup>§</sup>	132	6.2	412	19.3	389	18.2	933	43.7
Arizona <sup>¶</sup>	918	8.3	2,067	18.8	2,544	23.1	5,529	50.2
Arkansas	912	15.5	1,065	18.1	949	16.1	2,926	49.7
Colorado	813	8.4	948	9.8	1,837	18.9	3,598	37.1
Georgia	3,133	8.8	7,030	19.6	6,660	18.6	16,823	47.0
Hawaii <sup>¶</sup>	348	7.1	846	17.2	1,181	24.0	237	48.3
Idaho	139	13.6	158	15.5	226	22.1	523	51.2
Indiana	3,791	28.4	2,382	17.9	2,317	17.4	8,490	63.7
Kansas <sup>¶</sup>	2,213	20.7	2,181	20.4	1,625	15.2	6,019	56.3
Kentucky	1,024	14.6	1,228	17.5	1,131	16.2	3,833	48.3
Louisiana	927	7.8	1,238	10.4	2,492	21.0	4,657	39.2
Maine <sup>¶</sup>	134	5.1	515	19.7	773	29.6	1,422	54.4
Maryland <sup>¶</sup>	3,502	28.3	1,748	14.1	2,587	20.9	7,837	63.3
Michigan	7,290	24.1	5,461	18.1	5,888	19.5	18,639	61.7
Minnesota <sup>¶</sup>	1,988	14.0	3,461	24.4	2,957	20.8	8,406	59.2
Mississippi	262	6.2	781	18.6	875	20.8	1,918	45.6
Missouri**	1,275	11.0	2,124	18.3	2,074	17.8	5,473	47.1
Montana <sup>¶</sup>	954	34.5	409	14.8	402	14.5	1,765	63.8
Nevada	516	7.4	1,625	23.3	1,716	24.6	3,857	55.3
New Jersey	6,016	18.9	3,957	12.4	6,472	20.3	16,445	51.6
New York	27,312	17.9	26,134	17.1	28,398	18.6	81,844	53.6
City	21,696	19.8	18,456	16.9	21,233	19.4	61,385	56.1
State	5,616	12.9	7,678	17.6	7,165	16.4	20,459	46.9
North Dakota <sup>¶</sup>	93	7.2	376	29.1	281	21.8	750	58.1
Oregon <sup>¶</sup>	1,620	11.8	3,029	22.0	3,456	25.1	8,105	58.9
Pennsylvania	4,874	12.8	5,383	14.2	8,895	23.4	19,152	50.4
Rhode Island	748	13.8	1,122	20.6	1,179	21.7	3,049	56.1
South Carolina	1,969	21.1	1,576	16.9	2,060	22.1	5,605	60.1
South Dakota	42	4.7	217	24.1	215	23.9	474	52.7
Tennessee <sup>¶</sup>	1,881	10.5	3,207	17.8	4,380	24.3	9,468	52.6
Texas <sup>¶</sup>	17,262	18.9	15,247	16.7	18,699	20.4	51,208	56.0
Utah	752	20.7	645	17.7	588	16.2	1,985	54.6

**TABLE 7. Reported legal abortions obtained at  $\leq 8$  weeks of gestation, by known weeks of gestation and state of occurrence — selected states,\* United States, 1996 — Continued**

State	Weeks of gestation						Total obtained at $\leq 8$ weeks of gestation <sup>†</sup>	
	$\leq 6$		7		8		No.	%
	No.	%	No.	%	No.	%		
Vermont	372	17.4	530	24.8	439	20.5	1,341	62.7
Virginia <sup>¶</sup>	3,625	14.1	4,083	15.8	8,646	33.6	16,354	63.5
Washington <sup>¶</sup>	3,127	12.0	4,853	18.6	5,483	21.0	13,463	51.6
West Virginia	17	0.7	67	2.7	448	18.1	532	21.5
Wyoming <sup>§</sup>	18	8.7	46	22.1	52	25.0	116	55.8
<b>Total</b>	<b>102,098</b>	<b>16.1</b>	<b>108,608</b>	<b>17.1</b>	<b>130,653</b>	<b>20.6</b>	<b>341,359</b>	<b>53.8</b>

\* Data from 36 states and New York City; excludes three areas where unknown gestational age was  $>15\%$  and three areas that were included in Table 6 but did not provide single weeks of gestation for abortions obtained at  $\leq 8$  weeks.

<sup>†</sup> Percentages might not add to total percentage obtained at  $\leq 8$  weeks because of rounding.

<sup>§</sup> Weeks of gestation were based on physicians' estimates only if date of last menstrual period was unknown.

<sup>¶</sup> Weeks of gestation were based on physicians' estimates.

\*\* Weeks of gestation were based on physicians' estimates only if date of last menstrual period was unknown or unreliable.

TABLE 8. Reported legal abortions, by type of procedure and state of occurrence — selected states,\* United States, 1996

State	Procedure																	
	Suction curettage		Sharp curettage		All curettage		Intrauterine saline instillation		Prostaglandin instillation		Hysterotomy/Hysterectomy		Other <sup>†</sup>		Unknown		Total <sup>§</sup>	
	No.	%	No.	%	No.	%	No.	%	No.	%	No.	%	No.	%	No.	%	No.	%
Alabama	13,279 <sup>¶</sup>	96.0	11	0.1	13,290	96.1	7	0.1	15	0.1	0	0.0	15	0.1	499	3.6	13,826	100.0
Arizona	10,935	99.3	0	0.0	10,935	99.3	0	0.0	0	0.0	0	0.0	0	0.0	81	0.7	11,016	100.0
Arkansas	5,845 <sup>¶</sup>	99.4	30	0.5	5,875	99.9	2	0.0	3	0.1	0	0.0	2	0.0	0	0.0	5,882	100.0
Colorado	9,298 <sup>¶</sup>	95.8	4	0.0	9,302	95.8	1	0.0	10	0.1	1	0.0	295	3.0	101	1.0	9,710	100.0
Connecticut	13,996	99.3	81	0.6	14,077	99.9	0	0.0	0	0.0	0	0.0	1	0.0	16	0.1	14,094	100.0
Dist. of Columbia**	6,732	100.0	0	0.0	6,732	100.0	0	0.0	2	0.0	0	0.0	0	0.0	0	0.0	6,734	100.0
Georgia	35,663 <sup>¶</sup>	99.6	24	0.1	35,687	99.7	9	0.0	44	0.1	0	0.0	50	0.1	0	0.0	35,790	100.0
Hawaii	4,898	99.6	6	0.1	4,904	99.8	0	0.0	2	0.0	0	0.0	5	0.1	5	0.1	4,916	100.0
Idaho	1,005 <sup>¶</sup>	98.3	2	0.2	1,007	98.5	1	0.1	3	0.3	1	0.1	10	1.0	0	0.0	1,022	100.0
Indiana	12,772 <sup>¶</sup>	95.7	122	0.9	12,894	96.6	0	0.0	1	0.0	0	0.0	219	1.6	227	1.7	13,341	100.0
Kansas	9,590 <sup>¶</sup>	89.8	338	3.2	9,928	91.0	0	0.0	3	0.0	0	0.0	706	6.4	48	0.4	10,685	100.0
Kentucky	6,755 <sup>¶</sup>	96.5	123	1.8	6,878	98.3	6	0.1	3	0.0	0	0.0	2	0.0	111	1.6	7,000	100.0
Louisiana	10,534	88.8	15	0.1	10,549	88.9	0	0.0	0	0.0	0	0.0	10	0.1	1,306	11.0	11,865	100.0
Maine	2,562 <sup>¶</sup>	98.0	4	0.2	2,566	98.1	0	0.0	0	0.0	0	0.0	4	0.2	45	1.7	2,615	100.0
Maryland	12,163	98.4	79	0.6	12,242	99.0	11	0.1	25	0.2	0	0.0	85	0.7	0	0.0	12,363	100.0
Massachusetts	28,055	95.8	111	0.4	28,166	96.2	103	0.4	838	2.9	0	0.0	186	0.6	0	0.0	29,293	100.0
Michigan	29,727	98.4	405	1.3	30,132	99.7	0	0.0	54	0.2	0	0.0	22	0.1	0	0.0	30,208	100.0
Minnesota	14,109 <sup>¶</sup>	99.4	6	0.0	14,115	99.5	0	0.0	0	0.0	0	0.0	8	0.1	70	0.5	14,193	100.0
Mississippi	4,155 <sup>¶</sup>	98.8	1	0.0	4,156	98.8	0	0.0	21	0.5	1	0.0	28	0.7	0	0.0	4,206	100.0
Missouri	11,576 <sup>¶</sup>	99.5	4	0.0	11,580	99.6	0	0.0	3	0.0	0	0.0	24	0.2	22	0.2	11,629	100.0
Montana	2,752 <sup>¶</sup>	99.6	1	0.0	2,753	99.6	0	0.0	0	0.0	0	0.0	7	0.3	3	0.1	2,763	100.0
Nebraska	5,161	89.5	550	9.5	5,711	99.1	0	0.0	0	0.0	0	0.0	49	0.9	4	0.1	5,764 <sup>††</sup>	100.0
Nevada	6,495	93.3	442	6.3	6,937	99.6	1	0.0	0	0.0	0	0.0	0	0.0	27	0.4	6,965	100.0
New Jersey	18,758 <sup>¶</sup>	58.9	12,217	38.3	27,705	97.2	261	0.8	86	0.3	10	0.0	7	0.0	521	1.6	31,860	100.0
New Mexico	4,973 <sup>¶</sup>	98.8	32	0.6	5,005	99.4	0	0.0	0	0.0	0	0.0	27	0.5	1	0.0	5,033	100.0
New York	148,370 <sup>¶</sup>	97.0	1,690	1.1	150,060	98.1	637	0.4	261	0.2	3	0.0	743	0.5	1,291	0.8	152,995 <sup>††</sup>	100.0
City	106,336 <sup>¶</sup>	97.3	1,500	1.4	107,836	98.6	617	0.6	104	0.1	3	0.0	175	0.1	596	0.5	109,331	100.0
State	42,034 <sup>¶</sup>	96.3	190	0.4	42,224	96.7	20	0.0	157	0.4	—	—	568 <sup>§§</sup>	1.3	695	1.6	43,664 <sup>††</sup>	100.0
North Carolina	31,381 <sup>¶</sup>	93.5	72	0.2	31,453	93.7	95	0.3	36	0.1	8	0.0	201	0.6	1,766	5.3	33,554	100.0
North Dakota	1,289	99.8	0	0.0	1,289	99.8	0	0.0	2	0.2	0	0.0	0	0.0	0	0.0	1,291	100.0
Oregon	13,679 <sup>¶</sup>	99.4	3	0.0	13,682	99.4	1	0.0	1	0.0	1	0.0	80	0.6	2	0.0	13,767	100.0
Pennsylvania	37,468 <sup>¶</sup>	98.6	13	0.0	37,481	98.6	7	0.0	13	0.0	1	0.0	502	1.3	0	0.0	38,004	100.0
Rhode Island	5,384 <sup>¶</sup>	99.0	30	0.6	5,414	99.6	0	0.0	3	0.1	1	0.0	17	0.3	2	0.0	5,437	100.0
South Carolina	9,245 <sup>¶</sup>	99.1	16	0.2	9,261	99.3	0	0.0	28	0.3	1	0.0	29	0.3	7	0.1	9,326	100.0
South Dakota	901	100.0	0	0.0	901	100.0	0	0.0	0	0.0	0	0.0	0	0.0	0	0.0	901	100.0

**TABLE 8. Reported legal abortions, by type of procedure and state of occurrence — selected states,\* United States, 1996 — Continued**

State	Procedure																	
	Suction curettage		Sharp curettage		All curettage		Intrauterine saline instillation		Prostaglandin instillation		Hysterotomy/Hysterectomy		Other <sup>†</sup>		Unknown		Total <sup>§</sup>	
	No.	%	No.	%	No.	%	No.	%	No.	%	No.	%	No.	%	No.	%	No.	%
Tennessee	17,907 <sup>¶</sup>	99.5	6	0.0	17,913	99.6	1	0.0	62	0.3	1	0.0	0	0.0	12	0.1	17,989	100.0
Texas	89,128 <sup>¶¶</sup>	97.4	0	0.0	89,128	97.4	0	0.0	254 <sup>***</sup>	0.3	11	0.0	1,947 <sup>†††</sup>	2.1	130	0.1	91,470	100.0
Utah	3,225 <sup>¶</sup>	88.6	395	10.9	3,620	99.5	0	0.0	3	0.1	3	0.1	6	0.2	9	0.2	3,639	100.0
Vermont	2,124	99.3	1	0.0	2,125	99.3	0	0.0	2	0.1	0	0.0	12	0.6	0	0.0	2,139	100.0
Virginia	25,339 <sup>¶</sup>	98.3	16	0.1	25,355	98.4	19	0.1	49	0.2	2	0.0	37	0.1	308	1.2	25,770	100.0
Washington	25,828 <sup>¶</sup>	98.8	6	0.0	25,834	98.8	2	0.0	61	0.2	3	0.0	154	0.6	86	0.3	26,140 <sup>††</sup>	100.0
Wyoming	203	97.6	0	0.0	203	97.6	0	0.0	0	0.0	0	0.0	0	0.0	5	2.4	208	100.0
<b>Total</b>	<b>693,259</b>	<b>95.6</b>	<b>16,856</b>	<b>2.3</b>	<b>710,115</b>	<b>97.9</b>	<b>1,164</b>	<b>0.2</b>	<b>1,888</b>	<b>0.3</b>	<b>41</b>	<b>0.0</b>	<b>5,490</b>	<b>0.7</b>	<b>6,705</b>	<b>0.9</b>	<b>725,403</b>	<b>100.0</b>

\* Data from 39 states, the District of Columbia, and New York City; excludes two states where unknown type of procedure used was >15%.  
<sup>†</sup> Includes instillation procedures not reported as a specific category, procedures reported as medical (nonsurgical), and procedures reported as "other."  
<sup>§</sup> Percentages might not add to 100.0 because of rounding.  
<sup>¶</sup> Includes dilatation and evacuation procedures.  
<sup>\*\*</sup> Includes residents only.  
<sup>††</sup> Does not add to total abortions reported because of some reported combination procedures.  
<sup>§§</sup> Hysterotomy/hysterectomy included with "other."  
<sup>¶¶</sup> Includes all curettage.  
<sup>\*\*\*</sup> Includes all chemical inductions.  
<sup>†††</sup> Hysterectomy included with "other."  
 — Not reported.

**TABLE 9. Reported legal abortions, by race of women who obtained abortions and state of occurrence — selected states,\* United States, 1996**

State	Race								Total <sup>†</sup>	
	White		Black		Other		Unknown			
	No.	%	No.	%	No.	%	No.	%	No.	%
Alabama	7,200	52.1	6,318	45.7	181	1.3	127	0.9	13,826	100.0
Arizona	8,466	76.9	553	5.0	837	7.6	1,160	10.5	11,016	100.0
Arkansas	3,745	63.7	1,992	33.9	92	1.6	53	0.9	5,882	100.0
Georgia	15,734	44.0	18,157	50.7	945	2.6	954	2.7	35,790	100.0
Hawaii	1,311	26.7	134	2.7	3,127	63.6	344	7.0	4,916	100.0
Idaho	971	95.0	9	0.9	39	3.8	3	0.3	1,022	100.0
Indiana	8,773	65.8	3,357	25.2	237	1.8	974	7.3	13,341	100.0
Kansas	8,215	76.9	1,821	17.0	595	5.6	54	0.5	10,685	100.0
Kentucky	5,183	74.0	1,397	20.0	288	4.1	132	1.9	7,000	100.0
Louisiana	5,663	47.7	5,925 <sup>§</sup>	49.9	—	—	277	2.3	11,865	100.0
Maine	2,420	92.5	28	1.1	103	3.9	64	2.4	2,615	100.0
Maryland	5,033	40.7	6,384	51.6	745	6.0	201	1.6	12,363	100.0
Minnesota	10,636	74.9	1,836	12.9	1,444	10.2	277	2.0	14,193	100.0
Mississippi	1,340	31.9	2,805	66.7	54	1.3	7	0.2	4,206	100.0
Missouri	7,271	62.5	3,839	33.0	472	4.1	47	0.4	11,629	100.0
Montana	2,375	86.0	10	0.4	201	7.3	177	6.4	2,763	100.0
Nevada	5,726	82.2	527	7.6	373	5.4	339	4.9	6,965	100.0
New Jersey	11,250	35.3	14,235	44.7	5,035	15.8	1,340	4.2	31,860	100.0
New Mexico	4,315	85.7	165	3.3	553	11.0	0	0.0	5,033	100.0
New York City	42,267	38.7	53,338	48.8	4,681	4.3	9,045	8.3	109,331	100.0
North Carolina	17,215	51.3	13,715	40.9	1,890	5.6	734	2.2	33,554	100.0
North Dakota	1,162	90.0	19	1.5	109	8.4	1	0.1	1,291	100.0
Ohio	22,438	61.4	11,563	31.7	1,522	4.2	1,007	2.8	36,530	100.0
Oregon	11,913	86.5	738	5.4	966	7.0	150	1.1	13,767	100.0
Pennsylvania	22,102	58.2	14,727	38.8	1,144	3.0	31	0.1	38,004	100.0
Rhode Island	4,306	79.2	730	13.4	294	5.4	107	2.0	5,437	100.0
South Carolina	5,086	54.5	4,037	43.3	202	2.2	1	0.0	9,326	100.0
South Dakota	796	88.3	20	2.2	85	9.4	0	0.0	901	100.0
Tennessee	10,441	58.0	7,018	39.0	466	2.6	64	0.4	17,989	100.0
Texas	64,064	70.0	19,591	21.4	4,140	4.5	3,675	4.0	91,470	100.0
Utah	2,936	80.7	66	1.8	388	10.7	249	6.8	3,639	100.0
Vermont	2,074	97.0	21	1.0	40	1.9	4	0.2	2,139	100.0
Virginia	14,205	55.1	9,687	37.6	1,585	6.2	293	1.1	25,770	100.0
West Virginia	2,202	89.1	234	9.5	34	1.4	0	0.0	2,470	100.0
Wisconsin <sup>¶</sup>	9,561	72.9	2,835	21.6	703 <sup>**</sup>	5.4	9 <sup>**</sup>	0.1	13,108	100.0
<b>Total</b>	<b>348,395</b>	<b>57.0</b>	<b>207,831</b>	<b>34.0</b>	<b>33,570</b>	<b>5.5</b>	<b>21,900</b>	<b>3.6</b>	<b>611,696</b>	<b>100.0</b>
Ratio <sup>††</sup>	202		555 <sup>§§</sup>		360 <sup>§§</sup>				267	
Rate <sup>¶¶</sup>	12		31 <sup>***</sup>		25 <sup>***</sup>				15	

\* Data from 34 states and New York City; excludes six areas where unknown race was >15%.

† Percentages might not add to 100.0 because of rounding.

§ Reported as black and "other" races.

¶ Includes residents only.

\*\* Women of some "other" races are included with "unknown."

†† Calculated as the number of legal abortions obtained by women of a given race per 1,000 live births to women of the same race for these states. For each state, data for women of unknown race were distributed according to the known racial distribution for that state.

§§ Ratios for black and "other" races exclude Louisiana because abortions for blacks and others were grouped together.

¶¶ Calculated as the number of legal abortions obtained by women of a given race per 1,000 women aged 15–44 years of the same race for these states. For each state, data for women of unknown race were distributed according to the known racial distribution for that state.

\*\*\* Rates for black and "other" races exclude Louisiana because abortions for blacks and others were grouped together.

— Not reported.

**TABLE 10. Reported legal abortions, by Hispanic ethnicity of women who obtained abortions and state of occurrence — selected states,\* United States, 1996**

State	Ethnicity						Total†	
	Hispanic		Non-Hispanic		Unknown		No.	%
	No.	%	No.	%	No.	%		
Alabama	241	1.7	12,985	93.9	600	4.3	13,826	100.0
Arizona	2,693	24.4	7,163	65.0	1,160	10.5	11,016	100.0
Arkansas	47	0.8	5,457	92.8	378	6.4	5,882	100.0
Georgia	760	2.1	33,449	93.5	1,581	4.4	35,790	100.0
Idaho	96	9.4	918	89.8	8	0.8	1,022	100.0
Kansas	510	4.8	9,891	92.6	284	2.7	10,685	100.0
Minnesota	366	2.6	13,550	95.5	277	2.0	14,193	100.0
Mississippi	13	0.3	4,184	99.5	9	0.2	4,206	100.0
Missouri	211	1.8	11,043	95.0	375	3.2	11,629	100.0
New Jersey	5,930	18.6	24,602	77.2	1,328	4.2	31,860	100.0
New Mexico	2,195	43.6	2,838	56.4	0	0.0	5,033	100.0
New York City	29,237	26.7	66,716	61.0	13,378	12.2	109,331	100.0
North Dakota	25	1.9	1,142	88.5	124	9.6	1,291	100.0
Ohio	542	1.5	34,981	95.8	1,007	2.8	36,530	100.0
Oregon	991	7.2	12,727	92.4	49	0.4	13,767	100.0
Pennsylvania	1,391	3.7	36,591	96.3	22	0.1	38,004	100.0
South Carolina	121	1.3	9,203	98.7	2	0.0	9,326	100.0
South Dakota	25	2.8	876	97.2	0	0.0	901	100.0
Tennessee	191	1.1	17,769	98.8	29	0.2	17,989	100.0
Texas	27,157	29.7	60,638	66.3	3,675	4.0	91,470	100.0
Utah	397	10.9	3,173	87.2	69	1.9	3,639	100.0
Vermont	8	0.4	2,124	99.3	7	0.3	2,139	100.0
Wisconsin <sup>§</sup>	622	4.7	12,486	95.3	0	0.0	13,108	100.0
<b>Total</b>	<b>73,769</b>	<b>15.3</b>	<b>384,506</b>	<b>79.7</b>	<b>24,362</b>	<b>5.0</b>	<b>482,637</b>	<b>100.0</b>
Ratio <sup>¶</sup>	276		282				281	
Rate <sup>**</sup>	20		15				15	

\* Data from 22 states and New York City; excludes 15 areas where unknown Hispanic ethnicity was >15%.

† Percentages might not add to 100.0 because of rounding.

§ Includes residents only.

¶ Calculated as the number of legal abortions obtained by women of a given ethnicity per 1,000 live births to women of the same ethnicity for these states. For each state, data for women of unknown ethnicity were distributed according to the known ethnicity distribution for that state.

\*\* Calculated as the number of legal abortions obtained by women of a given ethnicity per 1,000 women aged 15–44 years of the same ethnicity for these states. For each state, data for women of unknown ethnicity were distributed according to the known ethnicity distribution for that state.

**TABLE 11. Reported legal abortions, by marital status of women who obtained abortions and state of occurrence — selected states,\* United States, 1996**

State	Marital status						Total <sup>¶</sup>	
	Married <sup>†</sup>		Unmarried <sup>§</sup>		Unknown		No.	%
	No.	%	No.	%	No.	%		
Alabama	2,219	16.0	11,550	83.5	57	0.4	13,826	100.0
Arkansas	1,156	19.7	4,569	77.7	157	2.7	5,882	100.0
Colorado	1,887	19.4	7,675	79.0	148	1.5	9,710	100.0
Georgia	6,584	18.4	28,960	80.9	246	0.7	35,790	100.0
Hawaii	978	19.9	3,898	79.3	40	0.8	4,916	100.0
Idaho	212	20.7	808	79.1	2	0.2	1,022	100.0
Illinois	9,145	17.1	42,971	80.2	1,497	2.8	53,613	100.0
Indiana	1,964	14.7	9,982	74.8	1,395	10.5	13,341	100.0
Kansas	2,258	21.1	8,379	78.4	48	0.4	10,685	100.0
Kentucky	1,152	16.5	5,651	80.7	197	2.8	7,000	100.0
Maryland	2,171	17.6	9,799	79.3	393	3.2	12,363	100.0
Michigan	5,009	16.6	25,046	82.9	153	0.5	30,208	100.0
Minnesota	2,744	19.3	11,135	78.5	314	2.2	14,193	100.0
Mississippi	609	14.5	3,580	85.1	17	0.4	4,206	100.0
Missouri	2,465	21.2	8,956	77.0	208	1.8	11,629	100.0
Montana	484	17.5	2,123	76.8	156	5.6	2,763	100.0
Nevada	1,694	24.3	5,184	74.4	87	1.2	6,965	100.0
New Jersey	5,801	18.2	25,925	81.4	134	0.4	31,860	100.0
New Mexico	834	16.6	4,164	82.7	35	0.7	5,033	100.0
New York City	21,770	19.9	81,300	74.4	6,261	5.7	109,331	100.0
North Dakota	251	19.4	1,039	80.5	1	0.1	1,291	100.0
Ohio	6,353	17.4	29,204	79.9	973	2.7	36,530	100.0
Oregon	3,135	22.8	10,419	75.7	213	1.5	13,767	100.0
Pennsylvania	6,615	17.4	31,365	82.5	24	0.1	38,004	100.0
Rhode Island	1,096	20.2	4,226	77.7	115	2.1	5,437	100.0
South Carolina	1,741	18.7	7,561	81.1	24	0.3	9,326	100.0
South Dakota	175	19.4	726	80.6	0	0.0	901	100.0
Tennessee	3,460	19.2	14,443	80.3	86	0.5	17,989	100.0
Texas	19,243	21.0	67,799	74.1	4,428	4.8	91,470	100.0
Utah	1,449	39.8	2,190	60.2	0	0.0	3,639	100.0
Vermont	457	21.4	1,557	72.8	125	5.8	2,139	100.0
West Virginia	433	17.5	2,037	82.5	0	0.0	2,470	100.0
Wisconsin**	2,634	20.1	10,457	79.8	17	0.1	13,108	100.0
Wyoming	31	14.9	177	85.1	0	0.0	208	100.0
<b>Total</b>	<b>118,209</b>	<b>19.0</b>	<b>484,855</b>	<b>78.1</b>	<b>17,551</b>	<b>2.8</b>	<b>620,615</b>	<b>100.0</b>
Ratio <sup>††</sup>	78		655				268	

\* Data from 33 states and New York City; excludes seven areas where unknown marital status was >15%.

† Includes married and separated.

§ Includes never married, divorced, and widowed women.

¶ Percentages might not add to 100.0 because of rounding.

\*\* Includes residents only.

†† Calculated as the number of legal abortions obtained by women of a given marital status per 1,000 live births to women of the same marital status for these states. For each state, data for women of unknown marital status were distributed according to the known marital status distribution for that state.

**TABLE 12. Reported legal abortions, by number of previous live births and state of occurrence — selected states,\* United States, 1996**

State	No. of previous live births												Total†	
	0		1		2		3		≥4		Unknown			
	No.	%	No.	%	No.	%	No.	%	No.	%	No.	%	No.	%
Alabama	6,427	46.5	4,004	29.0	2,372	17.2	684	4.9	247	1.8	92	0.7	13,826	100.0
Arizona	4,892	44.4	2,763	25.1	1,985	18.0	895	8.1	481	4.4	0	0.0	11,016	100.0
Arkansas	2,547	43.3	1,689	28.7	1,064	18.1	393	6.7	167	2.8	22	0.4	5,882	100.0
Colorado	5,551	57.2	1,973	20.3	1,439	14.8	508	5.2	239	2.5	0	0.0	9,710	100.0
Georgia	16,493	46.1	9,885	27.6	6,173	17.2	2,017	5.6	917	2.6	305	0.9	35,790	100.0
Hawaii	2,587	52.6	1,050	21.4	758	15.4	304	6.2	181	3.7	36	0.7	4,916	100.0
Idaho	529	51.8	208	20.4	170	16.6	86	8.4	23	2.3	6	0.6	1,022	100.0
Indiana <sup>§</sup>	5,661	42.4	3,713	27.8	2,555	19.2	877	6.6	374	2.8	161	1.2	13,341	100.0
Kansas	5,169	48.4	2,631	24.6	1,863	17.4	652	6.1	322	3.0	48	0.4	10,685	100.0
Kentucky	3,189	45.6	1,930	27.6	1,136	16.2	351	5.0	185	2.6	209	3.0	7,000	100.0
Maine	1,374	52.5	598	22.9	423	16.2	136	5.2	63	2.4	21	0.8	2,615	100.0
Maryland	5,408	43.7	3,657	29.6	2,149	17.4	794	6.4	355	2.9	0	0.0	12,363	100.0
Michigan	13,030	43.1	8,079	26.7	5,732	19.0	2,238	7.4	1,062	3.5	67	0.2	30,208	100.0
Minnesota	6,784	47.8	3,191	22.5	2,427	17.1	1,024	7.2	726	5.1	41	0.3	14,193	100.0
Mississippi	1,769	42.1	1,286	30.6	755	18.0	273	6.5	121	2.9	2	0.0	4,206	100.0
Missouri	4,887	42.0	3,150	27.1	2,276	19.6	882	7.6	434	3.7	0	0.0	11,629	100.0
Montana	1,502	54.4	569	20.6	417	15.1	178	6.4	96	3.5	1	0.0	2,763	100.0
Nebraska	2,520	48.3	1,222	23.4	865	16.6	392	7.5	215	4.1	0	0.0	5,214	100.0
Nevada	3,112	44.7	1,735	24.9	1,341	19.3	526	7.6	235	3.4	16	0.2	6,965	100.0
New Jersey	10,686	33.5	9,405	29.5	6,586	20.7	2,556	8.0	1,394	4.4	1,233	3.9	31,860	100.0
New Mexico	2,327	46.2	1,356	26.9	847	16.8	314	6.2	185	3.7	4	0.1	5,033	100.0
New York	53,804	35.2	38,773	25.3	29,335	19.2	12,576	8.2	7,656	5.0	10,847	7.1	152,991	100.0
City	34,976	32.0	30,156	27.6	22,736	20.8	9,986	9.1	6,420	5.9	5,057	4.6	109,331	100.0
State	18,828	43.1	8,617	19.7	6,599	15.1	2,590	5.9	1,236	2.8	5,790	13.3	43,660	100.0
North Carolina	15,247	45.4	8,532	25.4	4,805	14.3	1,580	4.7	663	2.0	2,727	8.1	33,554	100.0
North Dakota	689	53.4	274	21.2	191	14.8	90	7.0	47	3.6	0	0.0	1,291	100.0
Ohio	16,015	43.8	10,064	27.5	6,856	18.8	2,489	6.8	1,092	3.0	14	0.0	36,530	100.0
Oregon	6,578	47.8	3,365	24.4	2,500	18.2	878	6.4	408	3.0	38	0.3	13,767	100.0
Pennsylvania	16,426	43.2	10,271	27.0	7,071	18.6	2,722	7.2	1,476	3.9	38	0.1	38,004	100.0
Rhode Island <sup>§</sup>	2,635	48.5	1,290	23.7	956	17.6	342	6.3	176	3.2	38	0.7	5,437	100.0
South Carolina	4,507	48.3	2,477	26.6	1,611	17.3	521	5.6	201	2.2	9	0.1	9,326	100.0



**TABLE 12. Reported legal abortions, by number of previous live births and state of occurrence — selected states,\* United States, 1996 — Continued**

State	No. of previous live births												Total <sup>†</sup>	
	0		1		2		3		≥4		Unknown			
	No.	%	No.	%	No.	%	No.	%	No.	%	No.	%	No.	%
South Dakota <sup>§</sup>	459	50.9	190	21.1	143	15.9	75	8.3	34	3.8	0	0.0	901	100.0
Tennessee	7,605	42.3	5,499	30.6	3,282	18.2	1,098	6.1	496	2.8	9	0.1	17,989	100.0
Texas	43,551	47.6	23,646	25.9	15,551	17.0	5,763	6.3	2,878	3.1	81	0.1	91,470	100.0
Utah	1,635	44.9	869	23.9	690	19.0	254	7.0	134	3.7	57	1.6	3,639	100.0
Vermont	1,205	56.3	428	20.0	342	16.0	121	5.7	42	2.0	1	0.0	2,139	100.0
Virginia	12,245	47.5	6,760	26.2	4,239	16.4	1,384	5.4	580	2.3	562	2.2	25,770	100.0
Washington	12,276	47.0	6,465	24.7	4,721	18.1	1,701	6.5	839	3.2	136	0.5	26,138	100.0
West Virginia	1,160	47.0	721	29.2	427	17.3	116	4.7	46	1.9	0	0.0	2,470	100.0
Wyoming	96	46.2	47	22.6	40	19.2	16	7.7	7	3.4	2	1.0	208	100.0
<b>Total</b>	<b>302,577</b>	<b>43.1</b>	<b>183,765</b>	<b>26.2</b>	<b>126,093</b>	<b>18.0</b>	<b>47,806</b>	<b>6.8</b>	<b>24,797</b>	<b>3.5</b>	<b>16,823</b>	<b>2.4</b>	<b>701,861</b>	<b>100.0</b>
Ratio <sup>¶</sup>	287		223		311		315		249				270	

\*Data from 38 states and New York City; excludes three states where number of unknown previous live births was >15%.

<sup>†</sup>Percentages might not add to 100.0 because of rounding.

<sup>§</sup>Indicates number of living children.

<sup>¶</sup>Calculated as the number of legal abortions obtained by women with a given number of previous live births per 1,000 live births to women with the same number of previous live births for these states. For each state, data for women whose number of previous live births was unknown were distributed according to the known number of previous live births for that state. Ratios exclude Maryland and Rhode Island because the number of previous live births was unknown for these areas.

**TABLE 13. Reported legal abortions, by number of previous legal induced abortions and state of occurrence — selected states,\* United States, 1996**

State	No. of previous induced abortions										Total <sup>†</sup>	
	0		1		2		≥3		Unknown			
	No.	%	No.	%	No.	%	No.	%	No.	%	No.	%
Alabama	9,017	65.2	3,365	24.3	966	7.0	368	2.7	110	0.8	13,826	100.0
Arizona	6,804	61.8	2,841	25.8	914	8.3	457	4.1	0	0.0	11,016	100.0
Arkansas	3,899	66.3	1,420	24.1	378	6.4	154	2.6	31	0.5	5,882	100.0
Colorado	6,397	65.9	2,298	23.7	716	7.4	299	3.1	0	0.0	9,710	100.0
Georgia	20,070	56.1	9,896	27.7	3,556	9.9	1,892	5.3	376	1.1	35,790	100.0
Hawaii	1,689	34.4	1,708	34.7	858	17.5	619	12.6	42	0.9	4,916	100.0
Idaho	744	72.8	202	19.8	53	5.2	17	1.7	6	0.6	1,022	100.0
Indiana	8,307	62.3	3,366	25.2	982	7.4	449	3.4	237	1.8	13,341	100.0
Kansas	7,536	70.5	2,174	20.3	678	6.3	275	2.6	22	0.2	10,685	100.0
Kentucky	4,385	62.6	1,598	22.8	464	6.6	216	3.1	337	4.8	7,000	100.0
Maine	1,625	62.1	636	24.3	216	8.3	117	4.5	21	0.8	2,615	100.0
Maryland	3,712	30.0	4,564	36.9	2,534	20.5	1,553	12.6	0	0.0	12,363	100.0
Michigan	15,727	52.1	8,075	26.7	3,729	12.3	2,551	8.4	126	0.4	30,208	100.0
Minnesota	8,558	60.3	3,526	24.8	1,260	8.9	808	5.7	41	0.3	14,193	100.0
Mississippi	2,768	65.8	1,003	23.8	311	7.4	122	2.9	2	0.0	4,206	100.0
Missouri	6,917	59.5	3,159	27.2	1,048	9.0	505	4.3	0	0.0	11,629	100.0
Montana	1,587	57.4	741	26.8	264	9.6	169	6.1	2	0.1	2,763	100.0
Nebraska	3,139	60.2	1,282	24.6	445	8.5	338	6.5	10	0.2	5,214	100.0
Nevada	3,424	49.2	1,965	28.2	889	12.8	629	9.0	58	0.8	6,965	100.0
New Jersey	13,300	41.7	9,072	28.5	4,372	13.7	3,255	10.2	1,861	5.8	31,860	100.0
New Mexico	3,373	67.0	1,090	21.7	361	7.2	187	3.7	22	0.4	5,033	100.0
New York	62,018	40.5	41,260	27.0	23,561	15.4	19,258	12.6	6,894	4.5	152,991	100.0
City	39,624	36.2	31,560	28.9	19,445	17.8	16,833	15.4	1,869	1.7	109,331	100.0
State	22,394	51.3	9,700	22.2	4,116	9.4	2,425	5.6	5,025	11.5	43,660	100.0
North Carolina	19,751	58.9	8,314	24.8	2,561	7.6	1,160	3.5	1,768	5.3	33,554	100.0
North Dakota	904	70.0	269	20.8	80	6.2	38	2.9	0	0.0	1,291	100.0
Oregon	7,857	57.1	3,605	26.2	1,407	10.2	865	6.3	33	0.2	13,767	100.0
Pennsylvania	21,454	56.5	10,394	27.3	3,937	10.4	2,150	5.7	69	0.2	38,004	100.0
Rhode Island	3,103	57.1	1,379	25.4	573	10.5	318	5.8	64	1.2	5,437	100.0
South Carolina	6,010	64.4	2,327	25.0	725	7.8	264	2.8	0	0.0	9,326	100.0
South Dakota	671	74.5	186	20.6	32	3.6	12	1.3	0	0.0	901	100.0
Tennessee	10,369	57.6	4,832	26.9	1,812	10.1	962	5.3	14	0.1	17,989	100.0

**TABLE 13. Reported legal abortions, by number of previous legal induced abortions and state of occurrence — selected states,\* United States, 1996 — Continued**

State	No. of previous induced abortions										Total <sup>†</sup>	
	0		1		2		≥3		Unknown		No.	%
	No.	%	No.	%	No.	%	No.	%	No.	%		
Texas	57,328	62.7	22,950	25.1	7,280	8.0	3,531	3.9	381	0.4	91,470	100.0
Utah	2,372	65.2	809	22.2	272	7.5	151	4.1	35	1.0	3,639	100.0
Vermont	1,291	60.4	517	24.2	187	8.7	142	6.6	2	0.1	2,139	100.0
Virginia	15,020	58.3	7,078	27.5	2,373	9.2	1,026	4.0	273	1.1	25,770	100.0
Washington	13,701	52.4	7,111	27.2	3,001	11.5	2,165	8.3	160	0.6	26,138	100.0
West Virginia	1,678	67.9	566	22.9	168	6.8	58	2.3	0	0.0	2,470	100.0
Wyoming	135	64.9	45	21.6	16	7.7	10	4.8	2	1.0	208	100.0
<b>Total</b>	<b>356,640</b>	<b>53.6</b>	<b>175,623</b>	<b>26.4</b>	<b>72,979</b>	<b>11.0</b>	<b>47,090</b>	<b>7.1</b>	<b>12,999</b>	<b>2.0</b>	<b>665,331</b>	<b>100.0</b>

\* Data from 37 states and New York City; excludes four states where number of unknown previous induced abortions was >15%.

† Percentages might not add to 100.0 because of rounding.

**TABLE 14. Reported legal abortions, by known race, age group, and marital status of women who obtained abortions — United States, 1996**

Age group (yrs)/ Marital status	Race				Total	
	White		Black/Other		No.	%
	No.	%	No.	%		
<b>Age group</b>						
<15	2,019	0.6	2,500	1.0	4,519	0.8
15–19	69,406	20.0	43,073	17.9	112,479	19.2
20–24	109,177	31.5	79,378	33.0	188,555	32.1
25–29	77,783	22.4	59,270	24.7	137,053	23.3
30–34	48,371	13.9	33,950	14.1	82,321	14.0
35–39	30,403	8.8	17,223	7.2	47,626	8.1
≥40	9,631	2.8	5,036	2.1	14,667	2.5
<b>Total*</b>	<b>346,790</b>	<b>100.0</b>	<b>240,430</b>	<b>100.0</b>	<b>587,220</b>	<b>100.0</b>
<b>Marital status</b>						
Married	68,398	23.2	34,294	17.0	102,692	20.7
Unmarried	226,303	76.8	167,126	83.0	393,429	79.3
<b>Total†</b>	<b>294,701</b>	<b>100.0</b>	<b>201,420</b>	<b>100.0</b>	<b>496,121</b>	<b>100.0</b>

\*Data from 34 states and New York City; excludes four states where unknown race was >15%.

†Data from 29 states and New York City; excludes six states where unknown race or marital status was >15%.

**TABLE 15. Reported legal abortions, by known Hispanic ethnicity, age group, and marital status of women who obtained abortions — United States, 1996**

Age group (yrs)/ Marital status	Hispanic ethnicity				Total	
	Hispanic		Non-Hispanic		No.	%
	No.	%	No.	%		
<b>Age group</b>						
<15	476	0.6	2,919	0.8	3,395	0.7
15–19	14,176	19.3	71,980	18.8	86,156	18.9
20–24	24,753	33.7	121,588	31.7	146,341	32.0
25–29	17,593	24.0	89,781	23.4	107,374	23.5
30–34	9,984	13.6	54,688	14.3	64,672	14.2
35–39	5,046	6.9	32,211	8.4	37,257	8.2
≥40	1,426	1.9	10,120	2.6	11,546	2.5
<b>Total*</b>	<b>73,454</b>	<b>100.0</b>	<b>383,287</b>	<b>100.0</b>	<b>456,741</b>	<b>100.0</b>
<b>Marital status</b>						
Married	15,733	22.8	72,829	19.7	88,562	20.1
Unmarried	53,324	77.2	297,699	80.3	351,023	79.9
<b>Total†</b>	<b>69,057</b>	<b>100.0</b>	<b>370,528</b>	<b>100.0</b>	<b>439,585</b>	<b>100.0</b>

\*Data from 22 states and New York City; excludes 13 states where unknown ethnicity was >15%.

†Data from 21 states and New York City; excludes 11 states where unknown ethnicity or marital status was >15%.

**TABLE 16. Reported legal abortions, by known weeks of gestation, age group, race, and Hispanic ethnicity of women who obtained abortions — United States, 1996**

Age group (yrs)/ Race/Hispanic ethnicity	Weeks of gestation												Total*	
	≤8		9–10		11–12		13–15		16–20		≥21			
	No.	%	No.	%	No.	%	No.	%	No.	%	No.	%	No.	%
<b>Age group</b>														
<15	1,741	35.9	1,080	22.3	760	15.7	560	11.5	462	9.5	246	5.1	<b>4,849</b>	<b>100.0</b>
15–19	55,869	45.2	29,902	24.2	16,931	13.7	10,172	8.2	7,697	6.2	3,113	2.5	<b>123,684</b>	<b>100.0</b>
20–24	107,128	53.2	46,629	23.1	23,363	11.6	12,824	6.4	8,535	4.2	2,945	1.5	<b>201,424</b>	<b>100.0</b>
25–29	86,139	58.5	32,232	21.9	14,216	9.7	7,463	5.1	5,306	3.6	1,846	1.3	<b>147,202</b>	<b>100.0</b>
30–34	54,252	60.3	19,068	21.2	8,232	9.1	4,157	4.6	3,205	3.6	1,092	1.2	<b>90,006</b>	<b>100.0</b>
35–39	31,823	61.1	10,826	20.8	4,546	8.7	2,238	4.3	2,032	3.9	652	1.3	<b>52,117</b>	<b>100.0</b>
≥40	10,072	63.3	3,091	19.4	1,200	7.5	647	4.1	705	4.4	200	1.3	<b>15,915</b>	<b>100.0</b>
<b>Total†</b>	<b>347,024</b>	<b>54.6</b>	<b>142,828</b>	<b>22.5</b>	<b>69,248</b>	<b>10.9</b>	<b>38,061</b>	<b>6.0</b>	<b>27,942</b>	<b>4.4</b>	<b>10,094</b>	<b>1.6</b>	<b>635,197</b>	<b>100.0</b>
<b>Race</b>														
White	158,278	55.9	64,049	22.6	29,677	10.5	15,504	5.5	11,289	4.0	4,235	1.5	<b>283,032</b>	<b>100.0</b>
Black	88,513	49.8	41,944	23.6	22,219	12.5	12,460	7.0	9,377	5.3	3,353	1.9	<b>177,866</b>	<b>100.0</b>
Other	17,557	61.5	5,394	18.9	2,226	7.8	1,495	5.2	1,405	4.9	451	1.6	<b>28,528</b>	<b>100.0</b>
<b>Total§</b>	<b>264,348</b>	<b>54.0</b>	<b>111,387</b>	<b>22.8</b>	<b>54,122</b>	<b>11.1</b>	<b>29,459</b>	<b>6.0</b>	<b>22,071</b>	<b>4.5</b>	<b>8,039</b>	<b>1.6</b>	<b>489,426</b>	<b>100.0</b>
<b>Hispanic ethnicity</b>														
Hispanic	39,151	56.0	15,073	21.6	7,053	10.1	4,413	6.3	3,247	4.6	971	1.4	<b>69,908</b>	<b>100.0</b>
Non-Hispanic	179,583	54.2	73,057	22.0	35,949	10.8	20,777	6.3	15,757	4.8	6,257	1.9	<b>331,380</b>	<b>100.0</b>
<b>Total¶</b>	<b>218,734</b>	<b>54.5</b>	<b>88,130</b>	<b>22.0</b>	<b>43,002</b>	<b>10.7</b>	<b>25,190</b>	<b>6.3</b>	<b>19,004</b>	<b>4.7</b>	<b>7,228</b>	<b>1.8</b>	<b>401,288</b>	<b>100.0</b>

\* Percentages might not add to 100.0 because of rounding.

† Data from 37 states and New York City; excludes three states where unknown gestational age was >15%.

§ Data from 30 states and New York City; excludes six states where unknown gestational age or race was >15%.

¶ Data from 19 states and New York City; excludes 14 states where unknown gestational age or Hispanic ethnicity was >15%.

**TABLE 17. Reported legal abortions obtained at  $\leq 8$  weeks of gestation, by known weeks of gestation, age group, race, and Hispanic ethnicity of women who obtained abortions — United States, 1996**

Age group (yrs)/ Race/Hispanic ethnicity	Weeks of gestation						Total obtained at $\leq 8$ wks of gestation	
	$\leq 6$		7		8		No.	%*
	No.	%*	No.	%*	No.	%*		
<b>Age group</b>								
<15	430	9.0	527	11.1	753	15.8	1,710	35.9
15–19	14,374	11.9	17,038	14.1	23,326	19.3	54,738	45.3
20–24	30,290	15.4	33,252	16.9	41,381	21.0	104,923	53.3
25–29	26,139	18.1	27,072	18.8	31,301	21.7	84,512	58.6
30–34	17,090	19.4	17,065	19.3	19,050	21.6	53,205	60.3
35–39	10,060	19.7	10,099	19.8	11,053	21.6	31,212	61.1
$\geq 40$	3,403	21.8	3,137	20.1	3,330	21.4	9,870	63.3
<b>Total †</b>	<b>101,786</b>	<b>16.4</b>	<b>108,190</b>	<b>17.4</b>	<b>130,194</b>	<b>20.9</b>	<b>340,170</b>	<b>54.7</b>
<b>Race</b>								
White	41,226	14.6	53,784	19.0	63,268	22.4	158,278	56.0
Black	24,812	13.9	26,816	15.1	36,885	20.7	88,513	49.7
Other	6,049	21.2	5,545	19.4	5,963	20.9	17,557	61.5
<b>Total §</b>	<b>72,087</b>	<b>14.7</b>	<b>86,145</b>	<b>17.6</b>	<b>106,116</b>	<b>21.7</b>	<b>264,348</b>	<b>54.0</b>
<b>Hispanic ethnicity</b>								
Hispanic	12,449	17.8	11,941	17.1	14,761	21.1	39,151	56.0
Non-Hispanic	53,004	16.0	58,612	17.7	67,967	20.5	179,583	54.2
<b>Total ¶</b>	<b>65,453</b>	<b>16.3</b>	<b>70,553</b>	<b>17.6</b>	<b>82,728</b>	<b>20.6</b>	<b>218,734</b>	<b>54.5</b>

\* Percentages were calculated using total number of abortions obtained at all known weeks of gestation.

† Data from 36 states and New York City; excludes three states where unknown gestational age was  $>15\%$ .

§ Data from 30 states and New York City; excludes six states where unknown gestational age or race was  $>15\%$ .

¶ Data from 19 states and New York City; excludes 14 states where unknown gestational age or Hispanic ethnicity was  $>15\%$ .

**TABLE 18. Reported legal abortions, by known weeks of gestation and type of procedure — United States, 1996**

Type of procedure	Weeks of gestation												Total	
	≤8		9–10		11–12		13–15		16–20		≥21			
	No.	%	No.	%	No.	%	No.	%	No.	%	No.	%	No.	%
<b>Curettage (suction or sharp)*</b>	336,369	99.6	137,093	99.9	66,237	99.7	36,114	98.4	24,795	91.1	7,803	78.9	608,411	98.9
<b>Intrauterine saline instillation</b>	18	0.0 <sup>†</sup>	12	0.0 <sup>†</sup>	3	0.0 <sup>†</sup>	31	0.1	640	2.4	208	2.1	912	0.1
<b>Intrauterine prostaglandin instillation</b>	20	0.0 <sup>†</sup>	5	0.0 <sup>†</sup>	4	0.0 <sup>†</sup>	69	0.2	618	2.3	254	2.6	970	0.2
<b>Hysterotomy/ Hysterectomy</b>	9	0.0 <sup>†</sup>	9	0.0 <sup>†</sup>	5	0.0 <sup>†</sup>	2	0.0 <sup>†</sup>	4	0.0 <sup>†</sup>	7	0.1	36	0.0 <sup>†</sup>
<b>Other<sup>§</sup></b>	1,370	0.4	104	0.1	213	0.3	499	1.4	1,146	4.2	1,620	16.4	4,952	0.8
<b>Total<sup>¶</sup></b>	<b>337,786</b>	<b>100.0</b>	<b>137,223</b>	<b>100.0</b>	<b>66,462</b>	<b>100.0</b>	<b>36,715</b>	<b>100.0</b>	<b>27,203</b>	<b>100.0</b>	<b>9,892</b>	<b>100.0</b>	<b>615,281</b>	<b>100.0</b>

\* Includes dilatation and evacuation.

<sup>†</sup> <0.05%.<sup>§</sup> Includes instillation procedures not reported as a specific category, procedures reported as medical (nonsurgical), and procedures reported as "other."<sup>¶</sup> Data from 34 states and New York City; excludes four states where unknown gestational age or type of procedure was >15%. Percentages might not add to 100.0 because of rounding.

**TABLE 19. Number of deaths and case-fatality rates\* for abortion-related deaths reported to CDC, by type of abortion — United States, 1972–1992**

Year	No. of deaths				Total	Case-fatality rate*
	Type of abortion					
	Legal	Illegal	Spontaneous <sup>†</sup>	Unknown		
1972	24	39	25	2	90	4.1
1973	25	19	10	3	57	4.1
1974	26	6	21	1	54	3.4
1975	29	4	14	1	48	3.4
1976	11	2	13	1	27	1.1
1977	17	4	16	0	37	1.6
1978	9	7	9	0	25	0.8
1979	22	0	8	0	30	1.8
1980	9	1	6	2	18	0.7
1981	8	1	3	0	12	0.6
1982	11	1	5	0	17	0.8
1983	11	1	7	0	19	0.9
1984	12	0	5	0	17	0.9
1985	11	1	8	1	21	0.8
1986	11	0	5	2	18	0.8
1987	7	2	8	0	17	0.5
1988	16	0	7	0	23	1.2
1989	12	1	3	0	16	0.9
1990	5	0	5	0	10	0.3
1991	11	1	6	0	18	0.8
1992	10	0	17	0	27	0.7
<b>Total</b>	<b>297</b>	<b>90</b>	<b>201</b>	<b>13</b>	<b>601</b>	<b>1.2</b>

\*Legal induced abortion-related deaths per 100,000 legal induced abortions.

<sup>†</sup>In 1978, CDC defined "spontaneous abortion-related deaths" as those deaths that occurred at <20 weeks of estimated gestational age. Deaths that occurred at an estimated gestational age of ≥20 weeks were classified as stillbirths. Before 1978, criteria for gestational age were unspecified.







### State and Territorial Epidemiologists and Laboratory Directors

State and Territorial Epidemiologists and Laboratory Directors are acknowledged for their contributions to *CDC Surveillance Summaries*. The epidemiologists and the laboratory directors listed below were in the positions shown as of July 1999.

State/Territory	Epidemiologist	Laboratory Director
Alabama	John P. Lofgren, MD	William J. Callan, PhD
Alaska	John P. Middaugh, MD	Gregory V. Hayes, DrPH
Arizona	Robert W. England, Jr, MD, MPH	Barbara J. Erickson, PhD
Arkansas	Thomas C. McChesney, DVM	Michael G. Foreman
California	Stephen H. Waterman, MD, MPH	Paul Kimsey, PhD
Colorado	Richard E. Hoffman, MD, MPH	Ronald L. Cada, DrPH
Connecticut	James L. Hadler, MD, MPH	Sanders F. Hawkins, PhD
Delaware	A. LeRoy Hathcock, PhD	Christopher Zimmerman (Acting)
District of Columbia	Martin E. Levy, MD, MPH	James B. Thomas, ScD
Florida	Richard S. Hopkins, MD, MSPH	Ming Chan, PhD (Acting)
Georgia	Kathleen E. Toomey, MD, MPH	Elizabeth A. Franko, DrPH
Hawaii	Paul V. Effler, MD, MPH	Vernon K. Miyamoto, PhD
Idaho	Christine G. Hahn, MD	Richard H. Hudson, PhD
Illinois	Byron J. Francis, MD, MPH	David F. Carpenter, PhD
Indiana	Robert Teclaw, DVM, PhD, MPH	David E. Nauth
Iowa	M. Patricia Quinlisk, MD, MPH	Mary J. R. Gilchrist, PhD
Kansas	Gianfranco Pezzino, MD, MPH	Roger H. Carlson, PhD
Kentucky	Glyn G. Caldwell, MD	Samuel Gregorio, DrPH (Acting)
Louisiana	Louise McFarland, DrPH	Henry B. Bradford, Jr, PhD
Maine	Kathleen F. Gensheimer, MD, MPH	John A. Krueger
Maryland	Diane M. Dwyer, MD, MPH	J. Mehser Joseph, PhD
Massachusetts	Alfred DeMaria, Jr, MD	Ralph J. Timperi, MPH
Michigan	Matthew L. Boulton, MD, MPH	Frances Pouch Downes, DrPH (Acting)
Minnesota	Michael T. Osterholm, PhD, MPH	Norman Crouch, PhD (Acting)
Mississippi	Mary Currier, MD, MPH	Joe O. Graves, PhD
Missouri	H. Denny Donnell, Jr, MD, MPH	Eric C. Blank, DrPH
Montana	Todd A. Damrow, PhD, MPH	Mike Spence, MD
Nebraska	Thomas J. Safranek, MD	Steve Hinrichs, MD
Nevada	Randall L. Todd, DrPH	L. Dee Brown, MD, MPH
New Hampshire	Jesse Greenblatt, MD, MPH	Veronica C. Malmberg, MSN
New Jersey	John H. Brook, MD, MPH	Thomas J. Domenico, PhD
New Mexico	C. Mack Sewell, DrPH, MS	David E. Mills, PhD
New York City	Benjamin A. Mojica, MD, MPH	Alex Ramon, MD, MPH
New York State	Perry F. Smith, MD	Lawrence Sturman, MD
North Carolina	J. Newton MacCormack, MD, MPH	Lou F. Turner, DrPH
North Dakota	Larry A. Shireley, MPH, MS	James D. Anders, MPH
Ohio	Forrest W. Smith, MD	William Becker, DO
Oklahoma	J. Michael Crutcher, MD, MPH	Jerry Kudlac, PhD, MS
Oregon	David W. Fleming, MD	Michael R. Skeels, PhD, MPH
Pennsylvania	James T. Rankin, Jr, DVM, PhD, MPH	Bruce Kleger, DrPH
Rhode Island	Utpala Bandyopadhyay, MD, MPH	Walter S. Combs, Jr, PhD
South Carolina	James J. Gibson, MD, MPH	Harold Dowda, PhD
South Dakota	Vacant	Michael Smith
Tennessee	William L. Moore, Jr, MD	Michael W. Kimberly, DrPH
Texas	Diane M. Simpson, MD, PhD	David L. Maserang, PhD
Utah	Craig R. Nichols, MPA	Charles D. Brokopp, DrPH
Vermont	Peter D. Galbraith, DMD, MPH	Burton W. Wilcke, Jr, PhD
Virginia	Robert B. Stroube, MD, MPH	James L. Pearson, DrPH
Washington	Juliet VanEenwyk, PhD (Acting)	Jon M. Counts, DrPH
West Virginia	Loretta E. Haddy, MS, MA	Frank W. Lambert, Jr, DrPH
Wisconsin	Jeffrey P. Davis, MD	Ronald H. Laessig, PhD
Wyoming	Gayle L. Miller, DVM, MPH	Garry McKee, PhD, MPH
American Samoa	Joseph Tufa, DSM, MPH	Joseph Tufa, DSM, MPH
Federated States of Micronesia	Jean-Paul Chaine	—
Guam	Robert L. Haddock, DVM, MPH	Florencia Nocon (Acting)
Marshall Islands	Tom D. Kijiner	—
Northern Mariana Islands	Jose L. Chong, MD	Joseph Villagomez
Palau	Jill McCready, MS, MPH	—
Puerto Rico	Carmen C. Deseda, MD, MPH	José Luis Miranda Arroyo, MD
Virgin Islands	Jose Poblete, MD (Acting)	Norbert Mantor, PhD

## MMWR

The *Morbidity and Mortality Weekly Report (MMWR)* Series is prepared by the Centers for Disease Control and Prevention (CDC) and is available free of charge in electronic format and on a paid subscription basis for paper copy. To receive an electronic copy on Friday of each week, send an e-mail message to [listserv@listserv.cdc.gov](mailto:listserv@listserv.cdc.gov). The body content should read *SUBscribe mmwr-toc*. Electronic copy also is available from CDC's World-Wide Web server at <http://www.cdc.gov/> or from CDC's file transfer protocol server at <ftp.cdc.gov>. To subscribe for paper copy, contact Superintendent of Documents, U.S. Government Printing Office, Washington, DC 20402; telephone (202) 512-1800.

Data in the weekly *MMWR* are provisional, based on weekly reports to CDC by state health departments. The reporting week concludes at close of business on Friday; compiled data on a national basis are officially released to the public on the following Friday. Address inquiries about the *MMWR* Series, including material to be considered for publication, to: Editor, *MMWR* Series, Mailstop C-08, CDC, 1600 Clifton Rd., N.E., Atlanta, GA 30333; telephone (888) 232-3228.

All material in the *MMWR* Series is in the public domain and may be used and reprinted without permission; citation as to source, however, is appreciated.

☆U.S. Government Printing Office: 1999-733-228/08009 Region IV