



MMWRTM

Morbidity and Mortality Weekly Report

Surveillance Summaries

November 28, 2003 / Vol. 52 / No. SS-12

Abortion Surveillance — United States, 2000

The *MMWR* series of publications is published by the Epidemiology Program Office, Centers for Disease Control and Prevention (CDC), U.S. Department of Health and Human Services, Atlanta, GA 30333.

SUGGESTED CITATION

General: Centers for Disease Control and Prevention. *Surveillance Summaries*, November 28, 2003. MMWR 2003;52(No. SS-12).

Specific: [Author(s)]. [Title of particular article]. In: *Surveillance Summaries*, November 28, 2003. MMWR 2003;52(No. SS-12):[inclusive page numbers].

Centers for Disease Control and Prevention

Julie L. Gerberding, M.D., M.P.H.
Director

Dixie E. Snider, Jr., M.D., M.P.H.
(Acting) Deputy Director for Public Health Science

Susan Y. Chu, Ph.D., M.S.P.H.
(Acting) Associate Director for Science

Epidemiology Program Office

Stephen B. Thacker, M.D., M.Sc.
Director

Division of Public Health Surveillance and Informatics

Daniel M. Sosin, M.D., M.P.H.
Director
Associate Editor, Surveillance Summaries

Office of Scientific and Health Communications

John W. Ward, M.D.
Director
Editor, MMWR Series

Suzanne M. Hewitt, M.P.A.
Managing Editor, MMWR Series

C. Kay Smith-Akin, M.Ed.
Lead Technical Writer/Editor

Lynne McIntyre, M.A.L.S.
Project Editor

Beverly J. Holland
Lead Visual Information Specialist

Lynda G. Cupell
Malbea A. LaPete
Visual Information Specialists

Kim L. Bright, M.B.A.
Quang M. Doan, M.B.A.
Erica R. Shaver
Information Technology Specialists

CONTENTS

| | |
|-----------------------|----|
| Introduction | 2 |
| Methods | 2 |
| Results | 4 |
| Discussion | 6 |
| Acknowledgments | 9 |
| References | 9 |
| Figures | 12 |
| Tables | 14 |

Abortion Surveillance — United States, 2000

Laurie D. Elam-Evans, Ph.D.

Lilo T. Strauss, M.A.

Joy Herndon, M.S.

Wilda Y. Parker

Sonya V. Bowens, M.S.

Suzanne Zane, D.V.M.

Cynthia J. Berg, M.D.

*Division of Reproductive Health
National Center for Chronic Disease Prevention
and Health Promotion*

Abstract

Problem/Condition: CDC began abortion surveillance in 1969 to document the number and characteristics of women obtaining legal induced abortions.

Reporting Period Covered: This report summarizes and describes data reported to CDC regarding legal induced abortions obtained in the United States in 2000.

Description of System: For each year since 1969, CDC has compiled abortion data by state or area of occurrence. During 1973–1997, data were received from or estimated for 52 reporting areas in the United States: 50 states, the District of Columbia, and New York City. In 1998 and 1999, CDC compiled abortion data from 48 reporting areas. Alaska, California, New Hampshire, and Oklahoma did not report, and data for these areas were not estimated. In 2000, Oklahoma again reported these data, increasing the number of reporting areas to 49.

Results: A total of 857,475 legal induced abortions were reported to CDC for 2000 from 49 reporting areas, representing a 0.5% decrease from the 861,789 legal induced abortions reported by 48 reporting areas for 1999 and a 1.3% decrease for the same 48 reporting areas that reported in 1999. The abortion ratio, defined as the number of abortions per 1,000 live births, was 246 in 2000 (for the same 48 reporting areas as 1999), compared with 256 reported for 1999. This represents a 3.8% decline in the abortion ratio. The abortion rate (for the same 48 reporting areas as 1999) was 16 per 1,000 women aged 15–44 years for 2000. This was also a 3.8% decrease from the rate reported for procedures performed during 1997–1999 for the same 48 reporting areas.

The highest percentages of reported abortions were for women aged <25 years (52%), women who were white (57%), and unmarried women (81%). Fifty-eight percent of all abortions for which gestational age was reported were performed at ≤ 8 weeks of gestation, and 88% were performed before 13 weeks. From 1992 (when detailed data regarding early abortions were first collected) through 2000, steady increases have occurred in the percentage of abortions performed at ≤ 6 weeks of gestation. Few abortions were performed after 15 weeks of gestation; 4.3% were obtained at 16–20 weeks and 1.4% were obtained at ≥ 21 weeks. A total of 31 reporting areas submitted data stating that they performed medical (nonsurgical) procedures, making up 1.0% of all reported procedures from the 42 areas with adequate reporting on type of procedure.

In 1998 and 1999 (the most recent years for which data are available), 14 women died as a result of complications from known legal induced abortion. Ten of these deaths occurred in 1998 and four occurred in 1999; no deaths were associated with known illegal abortion.

Interpretation: From 1990 through 1997, the number of legal induced abortions gradually declined. In 1998 and 1999, the number of abortions continued to decrease when comparing the same 48 reporting areas. In 2000, even with one additional reporting state, the number of abortions declined slightly. In 1998 and 1999, as in previous years, deaths related to legal induced abortions occurred rarely (<1 death per 100,000 abortions).

Public Health Action: Abortion surveillance in the United States continues to provide data necessary for examining trends in numbers and characteristics of women who obtain legal induced abortions and for increasing understanding of one additional aspect of the spectrum of pregnancy outcomes. Policy makers and program planners need these data to improve the health and well-being of women and infants.

Introduction

CDC began conducting abortion surveillance in 1969 to document the number and characteristics of women obtaining legal induced abortions and to monitor one outcome of unintended pregnancies. This report is based on abortion data for 2000 provided to CDC's National Center for Chronic Disease Prevention and Health Promotion (NCCDPHP), Division of Reproductive Health.

Methods

For 2000, CDC compiled data that were voluntarily provided from 49 reporting areas in the United States: 47 states (excluding Alaska, California, and New Hampshire), the District of Columbia, and New York City. Legal induced abortion was defined as a procedure, performed by a licensed physician or someone acting under the supervision of a licensed physician, that was intended to terminate a suspected or known intrauterine pregnancy and to produce a nonviable fetus at any gestational age (1,2). The total number of legal induced abortions was available from all reporting areas; however, not all of these areas collected data regarding some or all of the characteristics of women who obtained abortions. Thus, the availability of data on characteristics of women obtaining an abortion varied by reporting area in 2000.

Most reporting areas (46 states, the District of Columbia, and New York City) collected and reported adequate data (i.e., data categorized in accordance with surveillance variables and with $\leq 15\%$ unknown values) by age of the woman, whereas only 29 states, the District of Columbia, and New York City collected and reported adequate data by Hispanic ethnicity. Therefore, the findings in this report reflect characteristics of women only from reporting areas that submitted adequate data for the characteristics being examined. For the majority of state tables, the percentage data include a category for unknown values. However, for trend data, out-of-area residents, adolescent ages, and two-characteristics tables, percentages presented are based on known values only.

For the 49 reporting areas, data concerning the number of women obtaining legal induced abortions were provided by the central health agency.* These agencies provided data on numbers of abortions and characteristics of women obtaining abortions by the state in which the abortions were performed (i.e., state of occurrence). For most states, abortion totals were also available by the woman's state of residence. However, three states (Delaware, Maryland, and Wisconsin) reported charac-

teristics only for women who were residents and who obtained abortions in the state, but not for women from out of state; and one state (Iowa) provided numbers and characteristics only for state residents. Two states (Florida and Louisiana) did not report abortion totals by resident status, and two states (Arizona and Massachusetts) provided only the total number of abortions for out-of-state residents without specifying individual states or areas of residence.

This report provides overall and state-specific abortion statistics. For all characteristics for which birth or population data were available, abortion ratios (number of abortions per 1,000 live births) or abortion rates (number of abortions per 1,000 women in a given age group) are provided. Starting with 1996, abortion ratios were calculated by using the number of live births to residents of each area, from birth data reported to CDC's National Center for Health Statistics (NCHS); numbers had previously been received from state health departments. The population data used for calculating abortion rates had previously been obtained from the U.S. Census Bureau postcensal data. However, because of the impact of changes in Office of Management and Budget (OMB) standards in 1997 that allowed for multiple race selections on the 2000 Census, no population data were released by the Census Bureau. NCHS bridged race and ethnicity data were used for calculating abortion rates; this involves a model that translates multiple race responses for an individual into the one, single response that the model predicts the individual most likely would have reported under the 1977 OMB standards (3).

Women who obtained legal induced abortions were categorized by 5-year age groups and by single years of age for adolescents aged 15–19 years. Abortion numbers, ratios and rates are presented by age group. Because nearly all (94%) abortions among women aged <15 years occurred among those aged 13–14 years in 1988 (the latest year for which this information is known) (4), the population of women aged 13–14 years was used as the denominator for calculating abortion rates for women <15 years. Rates for women aged ≥ 40 years were based on the number of women aged 40–44 years. Rates for all women who obtained abortions, however, were based on the population of women aged 15–44 years.

Race was categorized by three groups: white, black, and other races. Other races included Asian/Pacific Islander, American Indian, Alaska Native, and women classified as "other" race. Ethnicity was categorized as Hispanic and non-Hispanic. As in previous reports, race and ethnicity were provided as separate characteristics and abortions were not cross-classified by race and ethnicity. Abortion numbers, ratios and rates are presented by race and by ethnicity.

* Includes state health departments and the health departments of New York City and the District of Columbia.

Marital status was reported as either married (including women who were married or separated) or unmarried (including those who were never married, divorced, or widowed). Abortion numbers and ratios are presented by marital status.

Gestational age (in weeks) at the time of abortion was categorized as ≤ 6 , 7, 8 and ≤ 8 , 9–10, 11–12, 13–15, 16–20, and ≥ 21 . Weeks of gestation were estimated in 20 reporting areas as the time elapsed since the woman's last menstrual period. For 17 other states, gestational age was reported based on the physician's estimate (data from the clinical examination including ultrasound results). For the remaining six states, gestational age came from a combination of physician's estimates and the time elapsed since the woman's last menstrual period. Most areas (41 of 43) that reported adequate data on weeks of gestation at the time of abortion also reported abortions performed at ≤ 8 weeks separately for ≤ 6 , 7, and 8 weeks of gestation. Abortion numbers are presented by gestational age.

CDC has periodically reported data on abortion-related deaths since these deaths were first included in the Abortion Surveillance Report in 1972 (5,6). An abortion-related death was defined as a death resulting from 1) a direct complication of an abortion, 2) an indirect complication caused by the chain of events initiated by abortion, or 3) aggravation of a preexisting condition by the physiologic or psychologic effects of the abortion (1,2). Sources of data for abortion-related deaths included national and state vital records, maternal mortality review committees, surveys, private citizens and groups, media reports, health-care providers, medical examiners' reports, and computerized searches of full-text newspaper databases. All deaths associated with any type of abortion, induced or spontaneous, were investigated. For each death possibly related to an induced abortion or an abortion of unknown type, clinical records and autopsy reports were requested and reviewed by two clinically experienced medical epidemiologists to determine the cause of death and whether the death was abortion related. Each abortion-related death was then categorized as legal induced, illegal induced, spontaneous, or unknown (whether induced or spontaneous). Abortion-related deaths for 1972–1999 are provided in this report. Abortion mortality data are updated whenever additional information is supplied to CDC. The 1999 data have not been published previously and are the most recent data available. National case-fatality rates were calculated as the number of known legal induced abortion-related deaths per 100,000 reported legal induced abortions. Case-fatality rates for 1972–1997 are provided in this report. Case-fatality rates for 1998–1999 cannot be calculated because a substantial number of abortions occurred in the four nonreporting states, and the total number of abortions (the denominator) is unknown.

*"When the mind is ready,
a teacher appears."*

Chinese Proverb

MMWR Continuing Education is designed with your needs in mind: timely public health and clinical courses, online exams, instant course certificates, and economical tuition (it's free).

Visit MMWR Online to learn more about our program's features and available courses.

MMWR CE

It's ready when you are.

cdc.gov/mmwr



Results

Overall, the annual number of legal induced abortions in the United States increased gradually until it peaked in 1990, and it has declined in most years thereafter (Figure 1). In 2000, a total of 857,475 legal induced abortions were reported to CDC by 49 reporting areas. This represents a 0.5% decrease from 1999, for which 861,789 legal induced abortions were reported from 48 reporting areas (Table 1) and a 1.3% decrease in the same 48 reporting areas as 1999 (Table 2).

The national legal induced abortion ratio increased from 196 per 1,000 live births in 1973 (the first year that 52 areas reported) to 358 per 1,000 live births in 1979 and remained nearly stable through 1981 (Figure 1) (Table 2). The ratio peaked at 364 per 1,000 live births in 1984 and since then has shown a nearly steady decline. In 2000, the abortion ratio was 245 per 1,000 live births in 49 reporting areas and 246 for the same 48 reporting areas available for 1999. This represents a 3.8% decrease from 1999 (256 per 1,000 live births) for the 48 reporting areas (Table 2) (6).

The national legal induced abortion rate increased from 14 abortions per 1,000 women aged 15–44 years in 1973 to 25 per 1,000 in 1980. In the 1980s and early 1990s, the rate remained stable at 23–24 abortions per 1,000 women aged 15–44 years, and during 1994–1997 it again stabilized at 20–21. The abortion rate remained unchanged at 17 per 1,000 women aged 15–44 years from 1997 through 1999 in the same 48 reporting areas. In 2000, the abortion rate declined to 16 per 1,000 women aged 15–44 years (overall and in the same 48 reporting areas as 1999).

The numbers, ratios, and rates of reported legal induced abortions are presented by area of residence as well as by area of occurrence (Table 3). In 2000, the highest numbers of reported legal induced abortions occurred in New York City (94,466), Florida (88,563), and Texas (76,121); the fewest[†] occurred in Idaho (801), South Dakota (878), and North Dakota (1,341) (Table 3). The abortion ratios by state or area of occurrence ranged from 39 per 1,000 live births in Idaho to 869 per 1,000 live births in the District of Columbia. The rates by occurrence ranged from 3 per 1,000 women aged 15–44 years in Idaho to 46 per 1,000 women aged 15–44 years in the District of Columbia. These ratios and rates should be viewed with consideration of the sizable variation by state in the percentage of abortions obtained by out-of-state residents. In 2000, approximately 9% of reported abortions were obtained by out-of-state residents. The percentages ranged

from 0.4% in Hawaii to 56% in the District of Columbia (Table 3). Data by state of residence are incomplete because three states (Alaska, California, and New Hampshire) did not report and five states (Arizona, Florida, Iowa, Louisiana, and Massachusetts) did not provide any data concerning the residence status of all women obtaining abortions in their state.

Women aged 20–24 years were known to have obtained 33% of all abortions for which age was adequately reported. Women aged <15 years were known to have obtained <1.0% of all abortions in areas where age was reported (Table 4). Abortion ratios were highest for the youngest women (708 abortions per 1,000 live births for women aged <15 years) and lowest for women aged 30–34 years (145 per 1,000 live births) (Figure 2) (Table 4). In contrast to abortion ratios, among women for whom age was reported, abortion rates were highest for women aged 20–24 years (33 abortions per 1,000 women) and lowest for women at the extremes of reproductive age (2 abortions per 1,000 women aged 13–14 years and 2 per 1,000 women aged 40–44 years) (Table 4). Among adolescents (aged <20 years), the percentage of abortions obtained increased with increasing age. However, the abortion ratio was highest for those <15 years (701 abortions per 1,000 live births)[§] and lowest for those aged 19 years (324 per 1,000 live births) (Table 5). Conversely, the rates of abortions were lowest for adolescents aged <15 years (2 per 1,000 women aged 13–14 years) and highest for women age 19 (29 per 1,000 women aged 19 years) (Table 5).

Abortion trends by age indicate that since 1973, abortion ratios for women aged <15 years have been higher than for any other age group (Figure 3). For women aged ≤19 years and those aged ≥40 years, the abortion ratio increased overall from 1974 through the early 1980s and declined thereafter (Figure 3). The abortion ratio for women aged 20–34 years (the groups with the highest fertility rates) (7) has remained essentially stable since the mid-1980s. The abortion ratio for women aged 35–39 years has gradually declined over time.

In 2000, for women whose weeks of gestation at the time of abortion were adequately reported, 57% of reported legal induced abortions were known to have been obtained at ≤8 weeks of gestation, and 87% at <13 weeks (Table 6). Overall, 23% of abortions were known to have been performed at ≤6 weeks of gestation, 18% at 7 weeks, and 17% at 8 weeks (Table 7). Few reported abortions occurred after 15 weeks of gestation; 4.3% were at 16–20 weeks, and 1.4% were at ≥21 weeks.

[†] Wyoming reported six abortions in 2000. However, because of the inappropriateness of computing abortion rates and ratios for this small number, Wyoming was not included in these calculations.

[§] Ratios for women aged <15 years differ in Table 4 and Table 5 because a different number of areas are reporting; Table 4 includes 48 reporting areas, and Table 5 includes 46.

For women whose type of procedure was adequately reported, almost all (97%) abortions were known to have been performed by curettage and 0.4% by intrauterine instillation (Table 8). Hysterectomy and hysterotomy were included in the “other” procedure category and were known to have been used in fewer than 0.01% of all abortions. Thirty-one reporting areas submitted data stating that they performed medical (nonsurgical) procedures,⁴ hereafter referred to as medical abortions. Medical abortions make up approximately 1% of all procedures reported from the 42 areas with adequate reporting on type of procedure. However, three areas included medical abortions in the “other” category because data for medical abortions are not collected as a separate category on their abortion reporting form. For 2000, a total of 6,895 medical abortion procedures were submitted by the 28 reporting areas that reported medical abortions separately. This reflects an increase of 10% from the 6,278 medical abortions reported by 26 reporting areas for 1999 (6). We do not know to what extent the 6,895 medical abortions reported to CDC for 2000 represent the use of this procedure in all reporting areas.

In the 41 areas for which race was adequately reported, approximately 55% of women who obtained legal induced abortions were known to be white, 35% were black, and 7% were of other races; for 3% of the women, race was unknown. (Table 9). The abortion ratio for black women (503 per 1,000 live births) was 3.0 times the ratio for white women (167 per 1,000 live births). Additionally, the abortion ratio for women of other races (329 per 1,000 live births) was 2.0 times the ratio for white women. The abortion rate for black women (30 per 1,000 women) was 3.1 times the rate for white women (10 per 1,000 women), whereas the abortion rate for women of other races (22 per 1,000 women) was 2.2 times the rate for white women.

Twenty-nine states, the District of Columbia, and New York City reported adequate data** concerning the ethnicity of women who obtained legal induced abortions (Table 10). The percentage of abortions known to have been obtained by Hispanic women in these reporting areas was 17% overall and ranged from <0.1% in Kentucky to 46% in New Mexico. For Hispanic women in these reporting areas, the abortion ratio was 225 per 1,000 live births. The abortion rate for Hispanic women was 16 abortions per 1,000 women.

For women whose marital status was adequately reported, 78% of women who obtained abortions were known to be

unmarried (Table 11). The abortion ratio for unmarried women was 8.8 times the ratio for married women (570 versus 65 abortions per 1,000 live births).

For women for whom data on previous live births was adequately reported, 39% of women who obtained legal induced abortions were known to have had no previous live births, and 86% had had two or fewer previous live births (Table 12). The abortion ratio was highest for women who had three previous live births (285 per 1,000 live births) and lowest for women who had one previous live birth (194 per 1,000 live births).

In 2000, of women who obtained an abortion and whose number of previous abortions was adequately reported, 53% were reported to have obtained an abortion for the first time. Eighteen percent of women were reported to have had two or more previous abortions (Table 13).

For women whose age and race were known, white women had a slightly greater percentage of abortions in the youngest (≤ 19 years) and oldest (≥ 35 years) age groups compared with women of black or other races (19% versus 17% and 12% versus 10%, respectively) (Table 14). For women whose marital status and race were both known, the percentage of reported abortions among black or other races that were obtained by unmarried women (84%) was higher than that obtained by unmarried white women (79%). Among women obtaining abortions whose age and Hispanic ethnicity were known and reported adequately (29 reporting areas) the percentage of abortions obtained by older women (≥ 35 years) of non-Hispanic ethnicity (12%) was greater than that for older women of Hispanic ethnicity (9%)(Table 15). For women whose marital status and ethnicity were known and reported adequately (27 reporting areas), the percentage of reported abortions obtained by unmarried women was somewhat higher for non-Hispanic compared to Hispanic women (82% versus 80%) (Table 15). Data were not available to cross-classify race by Hispanic ethnicity.

As in the past, approximately 88% of all abortions (for which gestational age at the time of abortion was reported adequately) were obtained during the first 12 weeks of gestation (Table 1). The percentage of women who obtained an abortion at ≤ 8 weeks of gestation increased with age, with the exception of women aged 35–39 years (Figure 4) (Table 16). This association is most pronounced for abortions obtained at ≤ 6 weeks' gestation (Table 17). The percentage of women who obtained an abortion at ≥ 21 weeks of gestation decreased with age for women through 25–29 years (Table 16). Among women with adequately reported race and weeks of gestation, white women and women of other races were more likely than black women to obtain abortions at ≤ 6 or 7 weeks of gestation (Table 17). Among women with adequately reported known ethnicity and

⁴ Medical (nonsurgical) abortion procedures involve the administration of a medication or medications to induce abortion.

** After exclusion of 10 states for which ethnicity data were unknown for >15% of women who obtained an abortion.

weeks of gestation, 25% of Hispanic women obtained abortions at ≤ 6 weeks of gestation and 59% obtained abortions at ≤ 8 weeks' gestation. This is slightly more than the 57% of non-Hispanic women who obtained abortions at ≤ 8 weeks' gestation (Table 17).

For women whose type of procedure and weeks of gestation were adequately reported, approximately 99% of reported abortions obtained at ≤ 15 weeks of gestation were performed by using curettage (primarily suction procedures) (Table 18). Approximately 88% of the 6,229 reported medical abortions were performed at ≤ 8 weeks' gestation, representing 1.6% of all abortions that were performed at ≤ 8 weeks' gestation. At ≥ 16 weeks of gestation, medical abortions ($n = 559$) also made up 1.6% of all abortions. Medical abortions constituted $< 0.1\%$ of procedures performed in the 9–15-weeks gestation range. Intrauterine instillation involved the use of saline or prostaglandin and was used rarely (0.3% of all abortions), primarily at ≥ 16 weeks of gestation.

From the National Pregnancy Mortality Surveillance System, CDC identified 22 maternal deaths for 1998 and 17 maternal deaths for 1999 that were thought to be potentially related to abortion. These maternal deaths were identified either by some indication of abortion on the death certificate or from information such as a news report associated with the death. Investigation of these cases showed that 10 of the 22 deaths in 1998 and four of the 17 deaths in 1999 were related to legal induced abortion and none to illegal induced abortion (Table 19). For 1998, 11 deaths were due to spontaneous abortion, and one death was found not to be abortion related. For 1999, 10 deaths were due to spontaneous abortion, and three deaths were found not to be abortion related. Numbers of deaths due to legal induced abortion were highest before the 1980s, with very few deaths occurring in 1999 (Table 19). Possible abortion-related deaths that occurred during 2000–2002 are currently being investigated.

Discussion

A total of 857,475 legal induced abortions were reported for 2000 in the United States from 47 states, the District of Columbia, and New York City. This is a decline of 0.5% from the legal induced abortions reported for 1999 from 48 reporting areas (6). A decline of 1.3% in the number of abortions is seen when the same 48 reporting areas from 1999 are compared with those for 2000 (6). Before 1998, a substantial number of legal induced abortions were estimated to have been performed in California (e.g., $> 23\%$ of the U.S. total in 1997) (8). Beginning in 1998, data were no longer estimated for nonreporting states. The lack of data for California for 2000 explains most of the 28% decrease from the annual num-

ber of abortions reported in 1997 (8) as well as a portion of the decrease in the total ratio and rate.

Overall, abortion ratios and abortion rates have declined over time (Figure 1). The abortion ratio for 2000 (246 per 1,000 live births for the same 48 reporting areas as 1999) was a 3.8% decline from the previous year. The abortion rate (16 per 1,000 women aged 15–44 years for the same 48 reporting areas as 1999) was also a decline of 3.8% from the rate reported in 1999 (Table 2). The overall declines in the abortion ratio and rate over time may reflect multiple factors, including a decrease in the number of unintended pregnancies (9); a shift in the age distribution of women toward the older and less fertile ages (7); reduced or limited access to abortion services, including the passage of abortion laws that affect adolescents (e.g., parental consent or notification laws and mandatory waiting periods) (10–14); and changes in contraceptive practices, including an increased use of contraception, such as condoms, and, among young women, of long-acting hormonal contraceptive methods that were introduced in the early 1990s (15–18).

The abortion rate reported here for the United States was higher than recent rates reported for Canada and Western European countries and lower than rates reported for China, Cuba, most Eastern European countries, and several of the Newly Independent States of the former Soviet Union (19,20).

As in previous years, the abortion ratio in 2000 varied substantially by age. Although the abortion ratio was highest for adolescents in 2000, the ratio has gradually declined for women aged < 15 and 15–19 years since the mid 1980s (Figure 3). Other studies also have indicated a decrease in birth rates for women aged 15–19 years during 1991–2000 and a decrease in adolescent pregnancy rates 1991–1997 (7,21–26).

The percentage distribution of abortions by known weeks of gestation has shifted slightly since the late 1970s. From 1992 (when detailed data on early abortions were first available) through 2000, data have indicated steady increases in procedures performed at ≤ 6 weeks' gestation with decreases occurring in the percentage of abortions performed at 8, 9–10, and 11–12 weeks' gestation. The increase in the percentage of abortions known to have been performed at ≤ 6 weeks may be related to an increase in availability of early abortion services since 1992 as well as to an increase in medical and surgical procedures that can be performed early in gestation (27,28). Abortions performed early in pregnancy are associated with lower risks of mortality and morbidity (29). The proportions of abortions performed later in pregnancy (≥ 13 weeks) have varied very little since 1992. The gestational age at which an abortion is obtained can be influenced by several factors in addition to those for which surveillance data are available (age of the woman, race, marital status). These addi-

tional factors include level of education, availability and accessibility of abortion services, timing of confirmation of pregnancy, timing of personal decision-making, timing of prenatal diagnosis, level of fear of discovery of pregnancy, and denial of the pregnancy (30–32).

Since the mid-1990s, two medical regimens — methotrexate and mifepristone, each used in conjunction with misoprostol — have been tested in clinical trials and used by clinical practitioners to perform early medical abortions (28,33). CDC surveillance data indicate that >50% of all U.S. abortions are performed at ≤ 8 weeks of gestation, which is the timing of the regimen approved for both mifepristone and methotrexate (34). The medical procedures reported most often for abortions performed early in gestation (≤ 7 weeks) are use of methotrexate with misoprostol and mifepristone with misoprostol (35,36). Mifepristone for medical abortion was approved by the Food and Drug Administration (FDA) for use and distribution in the United States in September 2000. This approval might result in early medical abortions becoming more widespread (37,38). The FDA-approved protocol can be initiated up to 49 days of gestation and requires three office visits by the patient: administration of oral mifepristone, administration 48 hours later of oral misoprostol in the health care provider's office, and a follow-up visit in approximately 14 days. Clinical studies of alternative medical abortion regimens have been performed in various countries and are ongoing (39–46).

In 1997, the U.S. Standard Report of Induced Termination of Pregnancy, published by the National Center for Health Statistics (NCHS) and used by providers for abortion reporting to state health departments, was revised to include a category for “medical (nonsurgical)” procedures (47). Medical abortion procedures have been included in this report since then as a separate category. CDC will continue to monitor early medical procedures and to report the number of these procedures (Table 8).

The percentage of abortions known to be performed by curettage (which includes dilatation and evacuation [D&E]) increased from 88% in 1973 to 98% in 2000 (Table 1), while the percentage of abortions performed by intrauterine instillation declined sharply, from 10% to 0.4%. The increase in use of D&E is likely due to the lower risk for complications associated with the procedure (48,49). The percentage of abortions performed by D&E (curettage) at ≥ 13 weeks' gestation increased from 31% in 1974 (the first year for which these data were available) to 96% in 2000; the percentage of abortions performed by intrauterine instillation at ≥ 13 weeks' gestation decreased from 57% to 1.7% (Table 18)(50).

The differential between the abortion ratio for black women and that for white women has increased from 2.0 in 1989 (the first year for which black and other races were reported separately) to 3.0 in 2000 (51). In addition, the abortion rate for black women has been approximately 3 times as high as that for white women (range: 2.6–3.1) since 1991 (the first year for which rates by race were published) (52). These rates by race are substantially lower than rates previously published by NCHS and suggest that the reporting areas for the 2000 report might not be fully representative of the U.S. black female population of reproductive age. Census Bureau estimates and birth certificate data indicate that the large majority of Hispanic women report themselves as white (7). Therefore, data for some white women actually represent Hispanic women.

In 2000, 41 states, the District of Columbia and New York City reported Hispanic ethnicity of women who obtained abortions. Because of concerns regarding the completeness of such data (>15% unknown data) in certain states, in 2000, data from only 29 states, the District of Columbia, and New York City were used to determine the number and percentage of abortions obtained by women of Hispanic ethnicity. These geographic areas represent approximately 46% of all reproductive-age Hispanic women in the United States for 2000 and approximately 47% of U.S. Hispanic births (53). Thus, the number of Hispanic women who obtain abortions is underestimated, and the number, ratio, and rate of abortions for Hispanic women in this report are not generalizable to the overall Hispanic population in the United States.

The abortion ratio for Hispanic women (225 per 1,000 live births) was lower than the ratio for non-Hispanic women (233 per 1,000 live births). This differs from the findings for abortions performed in 1999 and reflects a return to the previously observed pattern among Hispanic women of slightly lower or similar ratios to those for non-Hispanic women. As in the past, the abortion rate per 1,000 Hispanic women (16) was higher than the rate per 1,000 non-Hispanic women (13). This finding is consistent with another study (18) but differs substantially from abortion rates by ethnicity that were published previously by NCHS (25). The differences are likely due to the method used to account for underreporting of abortions by adjusting CDC tabulations to national totals. This finding also suggests that the reporting areas for the 2000 report are not fully representative of the U.S. Hispanic female population of reproductive age. Race-specific and ethnicity-specific differences in legal induced abortion ratios and rates might reflect differences among groups in factors such as socioeconomic status, access to family planning and contraceptive services, contraceptive use, and incidence of unintended pregnancies.

NCHS vital statistics reports indicate that fertility and live birth rates were substantially higher for Hispanic women as a whole than for non-Hispanic women for all age groups in 2000 (7). However, because fertility and live birth rates differ substantially among the Hispanic subgroups (Mexican, Puerto Rican, Cuban, other Hispanic), and these differ substantially from rates among the non-Hispanic subgroups (white, black, other), comparisons between Hispanic and non-Hispanic groups are of limited value (7). Currently available abortion surveillance data do not permit cross-classification of race by Hispanic ethnicity. Efforts are under way to provide a cross-classification of race and ethnicity in future reports to comply with OMB Directive 15, which specifies federal standards for the collection of data on race and ethnicity (54).

Compared with 1972, the annual number of deaths associated with known legal induced abortion in the late 1990s has decreased by approximately 70% (Table 19). In 1972, 24 women died from causes known to be associated with legal abortions and 39 died as a result of known illegal abortions. In 1999, four died as a result of legal induced abortion and none died as a result of illegal induced abortion. Numbers of legal, induced abortion-related deaths for 1998 and 1999, identified for all 52 reporting areas, are similar to those reported over the previous 18 years. However, national case-

fatality rates for 1998 and 1999 cannot be calculated because a substantial number of abortions occurred in four nonreporting states, and the total number of abortions (the denominator) is unknown.

Because these data are reported voluntarily, several limitations exist. First, abortion data are compiled and reported to CDC by reporting area where the abortion was performed rather than by where the woman resides. This inflates the numbers, ratios, and rates of abortions for areas where a high proportion of legal abortions are obtained by out-of-state residents and undercounts procedures for states with limited abortion services or more stringent legal requirements for obtaining an abortion (causing women to seek abortions elsewhere). Second, four states (Alaska, California, New Hampshire, and Oklahoma) did not collect or report abortion data in 1998–1999 and three states (Alaska, California, and New Hampshire) did not report in 2000. Data for California and Oklahoma had been estimated before 1998; however, data for nonreporting states have not been estimated since 1997. Third, data provided to state or area health departments by providers might be incomplete (55). Fourth, the overall number, ratio, and rate of abortions are conservative estimates because the total numbers of legal induced abortions provided by central health agencies and reported to CDC for 2000 were probably

e xperience.

For over 50 years, MMWR has been the key provider of up-to-date public health reports and news. All of our publications—the Weekly, Recommendations and Reports, and Surveillance Summaries—are available online, free of charge.

Visit cdc.gov/mmwr and experience timely public health information from a trusted source.

know what matters.



lower than the numbers actually performed. Additionally, abortion totals for 2000 provided to CDC by central health agencies are 20% lower than that reported for 2000 for the same reporting areas by The Alan Guttmacher Institute, a private organization that contacts abortion providers directly (56). A previous report documented a discrepancy of approximately 12% (57); the reasons for this larger discrepancy are unclear. Fifth, not all states collected or reported data for all characteristics (e.g., age, race, and weeks of gestation) of women obtaining a legal induced abortion in 2000. Thus, the numbers, rates, and ratios derived in this analysis might not be representative of all women who obtained abortions.

Despite these limitations, findings from ongoing national surveillance of legal induced abortion are useful for several purposes. First, public health agencies use data from abortion surveillance to identify characteristics of women who are at high risk for unintended pregnancy. Second, ongoing annual surveillance is used to monitor trends in the number, ratio, and rate of abortions in the United States. Third, statistics regarding the number of pregnancies ending in abortion are used in conjunction with birth data and fetal death computations to estimate pregnancy rates (e.g., pregnancy rates among adolescents) (21–25). Fourth, abortion and pregnancy rates can be used to evaluate the effectiveness of family planning programs and programs for preventing unintended pregnancy. Fifth, ongoing surveillance provides data for assessing changes in clinical practice patterns related to abortion (e.g., longitudinal changes in the types of procedures and trends in weeks of gestation at the time of abortion). Finally, numbers of abortions are used as the denominator in calculating abortion mortality rates (29).

The Health Insurance Portability and Accountability Act (HIPAA) of 1996 was legislated to facilitate the electronic transfer of health data relating mostly to insurance coverage and transferability (58). Congress incorporated into HIPAA provisions that mandated adoption of federal privacy protections for certain individually identifiable health information, and the U.S. Department of Health and Human Services issued the Privacy Rule with April 14, 2003, as the date for implementation. The Privacy Rule states that protected health information for public health purposes is exempt from the Privacy Rule and, thus, covered entities may provide protected health information, without individual authorizations, to a public health authority, such as CDC, whose stated purpose is to prevent and control disease. Collection of surveillance data for this report is exempt from the Privacy Rule. However, the complexity of the rule might result in difficulty in its interpretation and therefore in collecting surveillance data on the part of certain contributing agencies (58).

Induced abortions usually result from unintended pregnancies, which often occur despite the use of contraception (15,59,60). Research has indicated that approximately 49% of all pregnancies in 1994 were unintended at conception (61). Additionally, 31% of births in 1995 were reported as unintended at conception; 21% were considered mistimed and 10% were considered unwanted (9,61). Unintended pregnancy is a problem not just for adolescents, unmarried women, or poor women; it is a pervasive public health problem for all women of reproductive age (9,15,52,61).

A reduction in unintended pregnancy, and thus abortion, will require several complex strategies. In a study of abortion patients conducted during 2000–2001, 54% of patients reported that they were using contraception during the month they became pregnant. However, their use of contraception might have been inconsistent or incorrect (18). In 1995, when the most recent NSFG was conducted, approximately 29% of sexually active U.S. women who used only oral contraceptives for birth control reported that they missed a birth-control pill one or more times during the 3 months before their NSFG interview. In addition, approximately 33% of U.S. women who were using only coitus-dependent contraceptive methods^{††} during the 3 months before the interview used these methods inconsistently (9). Not all health insurance plans provide contraceptive benefits (62). Therefore, education regarding abstinence, contraceptive use and practices as well as access to and education regarding safe, effective, and affordable contraception and family-planning services might help reduce the incidence of unintended pregnancy and, therefore, the number of legal induced abortions in the United States (63–65).

Copies of this and other MMWR reports containing statistical and epidemiologic data about abortions can be obtained through the CDC website at http://www.cdc.gov/nccdphp/drh/surv_abort.htm.

Acknowledgments

The authors thank Elizabeth Fitch, Division of Reproductive Health, NCCDPHP, CDC, for her work on graphics, and Stephanie Ventura, Division of Vital Statistics, NCHS, CDC, for her review of this surveillance report.

References

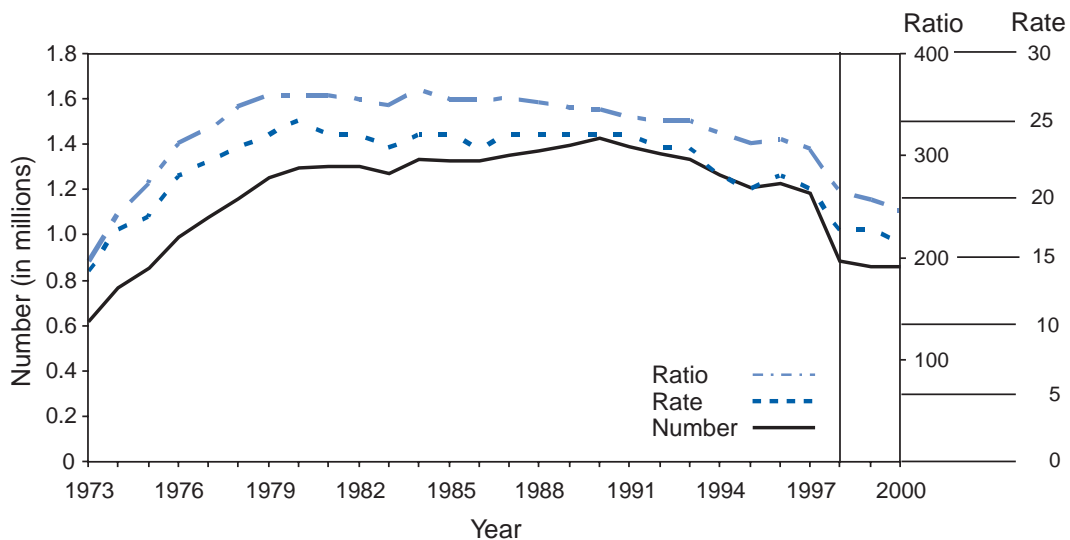
1. CDC. Abortion surveillance, 1977. Atlanta: US Department of Health, Education, and Welfare, Public Health Service, CDC, 1979:7.
2. CDC. Abortion surveillance, 1978. Atlanta: US Department of Health and Human Services, Public Health Service, CDC, 1980:7.

^{††} Coitus-dependent contraceptive methods include male or female condoms, diaphragm, sponge, cream, jelly, or other methods that must be used at the time intercourse occurs.

3. Ingram DD, Parker JD, Schenker N, et al. United States Census 2000 population with bridged race categories. Hyattsville, MD: US Department of Health and Human Services, CDC, National Center for Health Statistics, 2003. (Vital and health statistics; series 2, no. 135).
4. Spitz AM, Velebil P, Koonin LM, et al. Pregnancy, abortion, and birth rates among US adolescents—1980, 1985, and 1990. *JAMA* 1996;275:989–94.
5. CDC. Abortion surveillance, 1972. Atlanta: US Department of Health, Education, and Welfare, Public Health Service, CDC, 1974:5.
6. Elam-Evans LD, Strauss LT, Herndon JL, Parker WY, Whitehead S, Berg CJ. Abortion Surveillance—United States, 1999. In: CDC Surveillance Summaries, November 29, 2002. *MMWR* 2002;51(No. SS-9):1–28.
7. Martin JA, Hamilton BE, Ventura SJ, Menacker F, Park MM. Births: Final data for 2000. Hyattsville, MD: US Department of Health and Human Services, CDC, National Center for Health Statistics, 2002. (National vital statistics reports; vol. 50 no. 5).
8. Koonin LM, Strauss LT, Chrisman CE, Parker WY. Abortion surveillance—United States, 1997. In: CDC Surveillance Summaries, December, 8, 1999. *MMWR* 1999;49(No. SS-11):1–43.
9. Abma JC, Chandra A, Mosher WD, Peterson LS, Piccinino LJ. Fertility, family planning, and women's health: new data from the 1995 National Survey of Family Growth. Hyattsville, MD: US Department of Health and Human Services, CDC, 1997; DHHS publication no. (PHS)97-1995. (Vital and health statistics; series 23, no. 19).
10. Henshaw SK. Factors hindering access to abortion services. *Fam Plann Perspect* 1995;27:54–9.
11. Henshaw SK. Abortion incidence and services in the United States, 1995–1996. *Fam Plann Perspect* 1998;30:263–70, 287.
12. Alan Guttmacher Institute. State policies in brief. New York, Washington DC: Alan Guttmacher Institute. Available at <http://www.guttmacher.org/pubs/spib.html>.
13. Ellertson C. Mandatory parental involvement in minors' abortions: effects of the laws in Minnesota, Missouri, and Indiana. *Am J Public Health* 1997;87:1367–74.
14. Henshaw SK, Finer LB. The accessibility of abortion services in the United States, 2001. *Perspect Sex Reprod Health* 2003, 35:16–24.
15. Piccinino LJ, Mosher WD. Trends in contraceptive use in the United States: 1982–1995. *Fam Plann Perspect* 1998;30:4–10, 46.
16. Darroch JE, Singh S. Why is teenage pregnancy declining? The roles of abstinence, sexual activity and contraceptive use. New York, Washington DC: Alan Guttmacher Institute. Occasional Report No. 1, 1999. Available at http://www.alanguttmacherinstitute.org/pubs/or_teen_preg_decline.html.
17. Abma JC, Sonenstein F. Sexual activity and contraceptive practices among teenagers in the United States, 1988 and 1995. Hyattsville, MD: US Department of Health and Human Services, CDC, National Center for Health Statistics. 2001; DHHS publication No (PHS) 2001-2997. (Vital and health statistics; series 23, no. 21).
18. Jones RK, Darroch JE, Henshaw SK. Contraceptive use among US women having abortion in 2000–2001. *Perspect Sex Reprod Health* 2002;34:294–303.
19. Henshaw SK, Singh S, Haas T. The incidence of abortion worldwide. *Int Fam Plann Perspect* 1999;25(Suppl):S30–S37.
20. Statistics Canada. Induced (therapeutic) abortions, 2000. The Daily. Ottawa: Minister of Industry, March 28, 2003.
21. CDC. National and state-specific pregnancy rates among adolescents—United States, 1995–1997. *MMWR* 2000;49:605–11.
22. Ventura SJ, Mathews TJ, Hamilton BE. Teenage births in the United States: State trends, 1991–2000, an update. Hyattsville, MD: US Department of Health and Human Services, CDC, National Center for Health Statistics, 2002. (National vital statistics reports; vol. 50 no. 9).
23. Ventura SJ, Mosher WD, Curtin SC, Abma JC, Henshaw S. Trends in pregnancies and pregnancy rates by outcome: estimates for the United States, 1976–1996. Hyattsville, MD: US Department of Health and Human Services, CDC, National Center for Health Statistics, 2000; DHHS publication no. (PHS) 2000-1934. (Vital and health statistics; series 21, no. 56).
24. Ventura SJ, Mathews TJ, Hamilton BE. Births to teenagers in the United States, 1940–2000. Hyattsville, MD: Department of Health and Human Services, CDC, National Center for Health Statistics, 2001. (National vital statistics reports; vol. 49 no. 10).
25. Ventura SJ, Mosher WD, Curtin SC, Abma JC, Henshaw S. Trends in pregnancy rates for the United States, 1976–97: An update. Hyattsville, MD: Department of Health and Human Services, CDC, National Center for Health Statistics, 2001. (National vital statistics reports; vol. 49, no. 4).
26. Ventura SJ, Curtin SC, Mathews TJ. Variations in teenage birth rates, 1991–98: national and state trends. Hyattsville, MD: US Department of Health and Human Services, CDC, National Center for Health Statistics, 2000. (National vital statistics reports; vol. 48 no. 6).
27. Edwards J, Carson SA. New technologies permit safe abortion at less than six weeks' gestation and provide timely detection of ectopic gestation. *Am J Obstet Gynecol* 1997;176:1101–6.
28. Creinin MD, Edwards J. Early abortion: surgical and medical options. *Curr Probl Obstet Gynecol Fertil* 1997;20:1–32.
29. Lawson HW, Frye A, Atrash HK, Smith JC, Shulman HB, Ramick M. Abortion mortality, United States, 1972 through 1987. *Am J Obstet Gynecol* 1994;171:1365–72.
30. Evans MI, Wapner RJ. Future directions. *Clin Perinatol* 2001;28:477–80.
31. Fielding WL, Sachtleben MR, Friedman LM, Friedman EA. Comparison of women seeking early and late abortion. *Am J Obstet Gynecol* 1978;131:304–10.
32. Tietze C, Henshaw SK. Induced abortion: a world review, 1986. 6th ed. New York: Alan Guttmacher Institute, 1986:29–52.
33. Kahn JG, Becker BJ, Macisaa L, et al. The efficacy of medical abortion: a meta-analysis. *Contraception* 2000;61:29–40.
34. Joffe C. Medical abortion in social context. *Am J Obstet Gynecol* 2000;183(Suppl):S10–S15.
35. Pymar HC, Creinin MD. Alternatives to mifepristone regimens for medical abortion. *Am J Obstet Gynecol* 2000;183 (Suppl):S54–S64.
36. Goldberg AB, Greenberg MB, Darney PD. Drug therapy: misoprostol and pregnancy. *N Engl J Med* 2001;344:38–47.
37. Joffe C. Reactions to medical abortion among providers of surgical abortion: an early snapshot. *Fam Plann Perspect* 1999;31:35–8.
38. Koenig JD, Tapias MP, Hoff T, Stewart FH. Are US health professionals likely to prescribe mifepristone or methotrexate? *J Am Med Womens Assoc* 2000;55(Suppl):155–60.
39. World Health Organization Task Force on Post-Ovulatory Methods of Fertility Regulation, Comparison of two doses of mifepristone in combination with misoprostol for early medical abortion: a randomized trial. *Br J Obstet Gynaecol* 2000;107:524–530.
40. McKinley C, Thong KJ, Baird DT. The effect of dose of mifepristone and gestation on the efficacy of medical abortion with mifepristone and misoprostol. *Hum Reprod* 1993;8:1502–5.

41. El-Refaey H, Rajasekar R, Abdalla M, Calder L, Templeton A. Induction of abortion with mifepristone (RU 486) and oral or vaginal misoprostol. *N Engl J Med* 1995;332:983–7.
42. Ashok PW, Templeton A. Nonsurgical mid-trimester termination of pregnancy; a review of 500 consecutive cases. *Br J Obstet Gynaecol* 1999;106:706–10.
43. Ashok PW, Penney GC, Flett GM, Templeton A. An effective regimen for early medical abortion: a report of 2,000 consecutive cases. *Hum Reprod* 1998;13:2962–5.
44. Schaff EA, Fielding SL, Westhoff C, et al. Randomized trial of vaginal misoprostol administered 1, 2, or 3 days after mifepristone for early medical abortion: a randomized trial. *JAMA* 2000;284:1948–1953.
45. Elul B, Hajri S, Ngoc NTN, et al. Can women in less-developed countries use a simplified medical abortion regimen? *Lancet* 2001;357:1402–5.
46. Jones RK, Henshaw SK. Mifepristone for early medical abortion: experiences in France, Great Britain and Sweden. *Perspect Sex Reprod Health* 2002;34:154–61.
47. CDC. Handbook on the reporting of induced termination of pregnancy. Hyattsville, MD: US Department of Health and Human Services, CDC, National Center for Health Statistics, 1998; DHHS publication no. (PHS)98-1117;1–18.
48. Cates W Jr, Schulz KF, Grimes DA, et al. Dilatation and evacuation procedures and second-trimester abortion: the role of physician skill and hospital setting. *JAMA* 1982;248:559–63.
49. Grimes DA. Second-trimester abortions in the United States. *Fam Plann Perspect* 1984;16:260–6.
50. CDC. Abortion surveillance, 1974. Atlanta: US Department of Health, Education, and Welfare, Public Health Service, CDC, 1976:1–49.
51. Koonin LM, Smith JC, Ramick M, Lawson HW. Abortion surveillance—United States, 1989. In: CDC Surveillance Summaries, September 4, 1992. *MMWR* 1992;41(No. SS-5):1–33.
52. Koonin LM, Smith JC, Ramick M. Abortion Surveillance—United States, 1991. In: CDC Surveillance Summaries, May 5, 1995. *MMWR* 1995;44(No. SS-2):23–53.
53. National Center for Health Statistics. Bridged modified race summary file. Hyattsville, MD: US Department of Health and Human Services, CDC, National Center for Health Statistics, 2003. Available at <http://www.cdc.gov/nchs/about/major/dvs/popbridge/popbridge.htm>. File br040100.txt.
54. Revisions to the standards for the classification of federal data on race and ethnicity. *Federal Register*. October 30, 1997;62:58782–58790.
55. Henshaw SK, Feivelson DJ. Teenage abortion and pregnancy statistics by state, 1996. *Fam Plann Perspect* 2000;32:272–80.
56. Finer LB, Henshaw SK. Abortion incidence and services in the United States in 2000. *Perspect Sex Reprod Health* 2003;35:6–15.
57. Koonin LM, Strauss LT, Chrisman CE, Montalbano MA, Bartlett LA, Smith JC. Abortion Surveillance — United States, 1996. In: CDC Surveillance Summaries, July 30, 1999. *MMWR* 1999;48(No. SS-4):1–42.
58. CDC. HIPAA Privacy Rule and public health: guidance from CDC and the US Department of Health and Human Services. *MMWR* 2003;52(Suppl):1–20.
59. Fu H, Darroch JE, Haas T, Ranjit N. Contraceptive failure rates: new estimates from the 1995 National Survey of Family Growth. *Fam Plann Perspect* 1999;31:56–63. Corrected data are available at <http://www.agi-usa.org/pubs/journals/3105699.html>.
60. Torres A, Forrest JD. Why do women have abortions? *Fam Plann Perspect* 1988;20:169–76.
61. Henshaw SK. Unintended pregnancy in the United States. *Fam Plann Perspect* 1998;30:24–9,46.
62. Gold RB, Darroch JE, Frost JJ. Mainstreaming contraceptive services in managed care—five states’ experiences. *Fam Plann Perspect* 1998;30:204–11.
63. Westoff CF. Contraceptive paths toward the reduction of unintended pregnancy and abortion. *Fam Plann Perspect* 1988;20:4–13.
64. Forrest JD. Epidemiology of unintended pregnancy and contraceptive use. *Am J Obstet Gynecol* 1994;170(Suppl):1485–8.
65. Gonen JS. Value purchasing: investing in women’s health. Washington DC: Jacobs Institute of Women’s Health. 2000.

FIGURE 1. Number, ratio*, and rate† of legal abortions performed, by year — United States, 1973–2000§

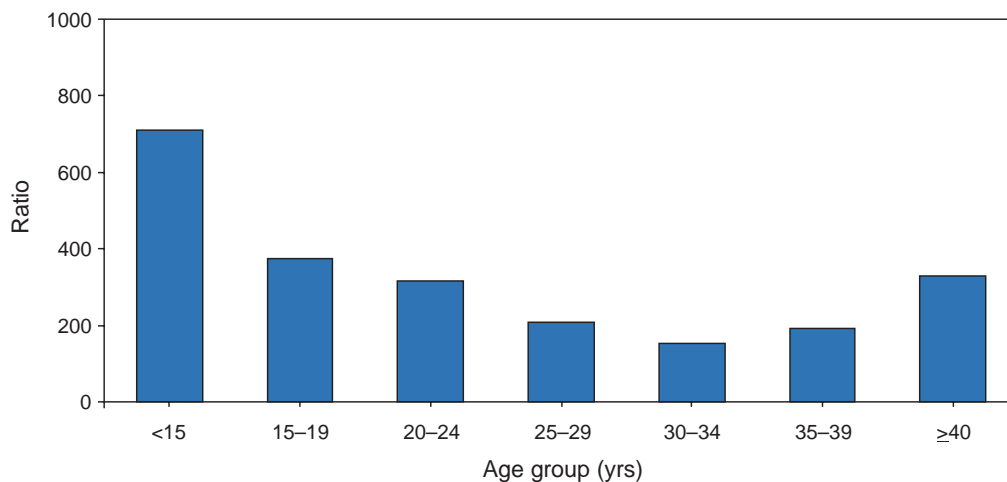


* Number of abortions per 1,000 live births.

† Number of abortions per 1,000 women aged 15–44 years.

§ For 1998–1999, data are from 48 reporting areas, and for 2000, from 49 reporting areas. See Table 2.

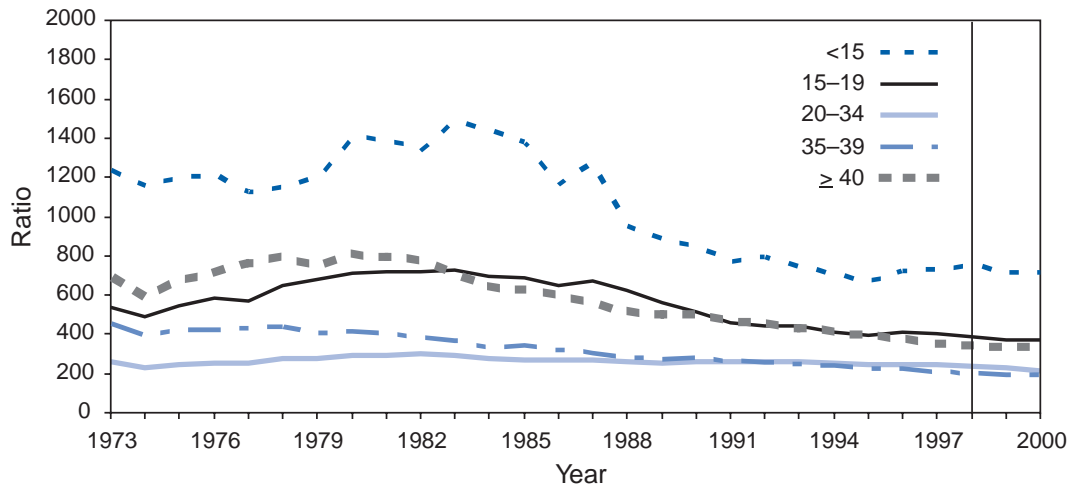
FIGURE 2. Abortion ratio,* by age group of women who obtained a legal abortion — selected states,† United States, 2000



* Number of abortions per 1,000 live births.

† Data from 46 states, the District of Columbia, and New York City. See Table 4.

FIGURE 3. Abortion ratio,* by age group† of women who obtained a legal abortion — selected states,§ United States, 1973–2000¶

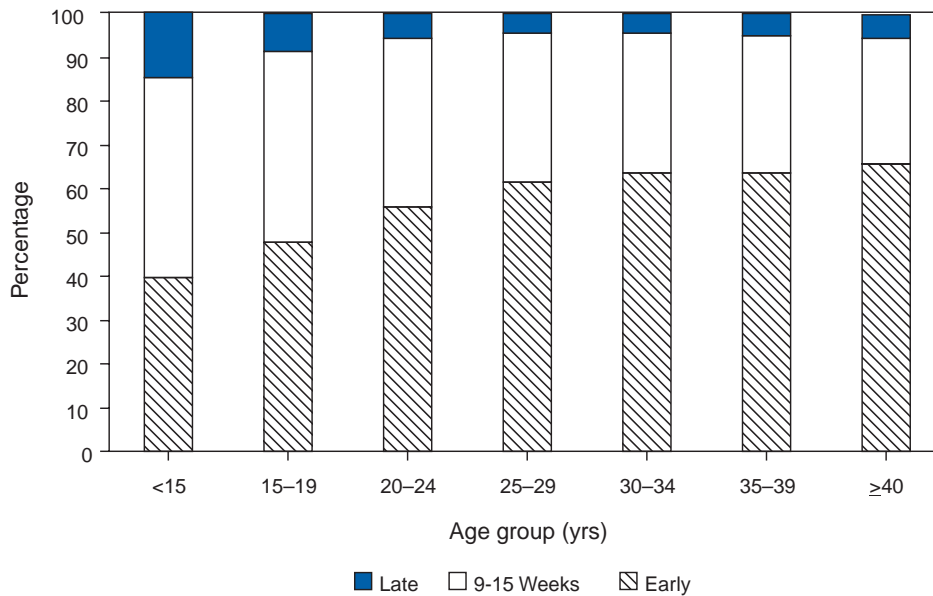


* Number of abortions per 1,000 live births.

† In years.

§ For 1998–1999, data are from 48 reporting areas, and for 2000, from 49 reporting areas.

FIGURE 4. Percentage* of women who obtained early† or late§ abortions, by age group of women — selected states,¶ United States, 2000



* Based on total known weeks of gestation.

† ≤8 weeks of gestation.

§ ≥16 weeks of gestation.

¶ Data from 40 states and New York City; excludes two states where gestational age was unknown for >15% of women. See Table 16.

Table 1. Characteristics of women who obtained legal abortions — United States, 1973–2000

| Characteristic | 1973 | 1974 | 1975 | 1976 | 1977 | 1978 | 1979 | 1980 | 1981 | 1982 | 1983 |
|---|---|---------|---------|---------|-----------|-----------|-----------|-----------|-----------|-----------|-----------|
| Reported no. of legal abortions* | 615,831 | 763,476 | 854,853 | 988,267 | 1,079,430 | 1,157,776 | 1,251,921 | 1,297,606 | 1,300,760 | 1,303,980 | 1,268,987 |
| | Percent distribution[§] | | | | | | | | | | |
| Residence | | | | | | | | | | | |
| In-state/area | 74.8 | 86.6 | 89.2 | 90.0 | 90.0 | 89.3 | 90.0 | 92.6 | 92.5 | 92.9 | 93.3 |
| Out-of-state/area | 25.2 | 13.4 | 10.8 | 10.0 | 10.0 | 10.7 | 10.0 | 7.4 | 77.5 | 7.1 | 66.7 |
| Age (yrs) | | | | | | | | | | | |
| ≤19 | 32.6 | 32.6 | 33.1 | 32.1 | 30.8 | 30.0 | 30.0 | 29.2 | 28.0 | 27.1 | 27.1 |
| 20–24 | 32.0 | 31.8 | 31.9 | 33.3 | 34.5 | 35.0 | 35.4 | 35.5 | 35.3 | 35.1 | 34.7 |
| ≥25 | 35.3 | 35.6 | 35.0 | 34.6 | 34.7 | 35.0 | 34.6 | 35.3 | 36.7 | 37.8 | 38.2 |
| Race[¶] | | | | | | | | | | | |
| White | 72.5 | 69.7 | 67.8 | 66.6 | 66.4 | 67.0 | 68.9 | 69.9 | 69.9 | 68.5 | 67.6 |
| Black | 27.5 | 30.3 | 32.2 | 33.4 | 33.6 | 33.0 | 31.1 | 30.1 | 30.1 | 31.5 | 32.4 |
| Other ^{**} | — | — | — | — | — | — | — | — | — | — | — |
| Ethnicity | | | | | | | | | | | |
| Hispanic | — | — | — | — | — | — | — | — | — | — | — |
| Non-Hispanic | — | — | — | — | — | — | — | — | — | — | — |
| Marital status | | | | | | | | | | | |
| Married | 27.4 | 27.4 | 26.1 | 24.6 | 24.3 | 26.4 | 24.7 | 23.1 | 22.1 | 22.0 | 21.4 |
| Unmarried | 72.6 | 72.6 | 73.9 | 75.4 | 75.7 | 73.6 | 75.3 | 76.9 | 77.9 | 78.0 | 78.6 |
| No. of live births^{††} | | | | | | | | | | | |
| 0 | 48.6 | 47.9 | 47.1 | 47.7 | 53.4 | 56.6 | 58.1 | 58.4 | 58.3 | 57.8 | 57.1 |
| 1 | 18.8 | 19.6 | 20.2 | 20.7 | 19.0 | 19.2 | 19.1 | 19.4 | 19.7 | 20.3 | 20.7 |
| 2 | 14.2 | 14.8 | 15.5 | 15.4 | 14.4 | 14.1 | 13.8 | 13.7 | 13.7 | 13.9 | 14.2 |
| 3 | 8.7 | 8.7 | 8.7 | 8.3 | 7.0 | 5.9 | 5.5 | 5.3 | 5.3 | 5.1 | 5.2 |
| ≥4 | 9.7 | 9.0 | 8.5 | 7.9 | 6.2 | 4.2 | 3.5 | 3.2 | 3.0 | 2.9 | 2.8 |
| Type of procedure | | | | | | | | | | | |
| Curettage | 88.4 | 89.7 | 91.0 | 92.8 | 93.7 | 94.6 | 95.0 | 95.5 | 96.1 | 96.5 | 96.8 |
| Suction curettage | 74.9 | 77.4 | 82.6 | 82.6 | 90.7 | 90.2 | 91.3 | 89.8 | 90.4 | 90.7 | 91.1 |
| Sharp curettage | 13.5 | 12.3 | 8.4 | 10.2 | 3.0 | 4.4 | 3.7 | 5.7 | 5.7 | 5.8 | 5.7 |
| Intrauterine instillation | 10.3 | 7.8 | 6.2 | 6.0 | 5.4 | 3.9 | 3.3 | 3.1 | 2.8 | 2.5 | 2.1 |
| Hysterotomy/hysterectomy ^{§§} | 0.6 | 0.6 | 0.4 | 0.3 | 0.2 | 0.1 | 0.1 | 0.1 | 0.1 | 0.0 | 0.0 |
| Other ^{§§} | 1.2 | 1.9 | 2.4 | 0.9 | 0.7 | 1.4 | 1.6 | 1.3 | 1.0 | 1.0 | 1.1 |
| Weeks of gestation | | | | | | | | | | | |
| ≤8 | 36.1 | 42.6 | 44.6 | 47.0 | 51.1 | 52.2 | 52.1 | 51.7 | 51.2 | 50.6 | 49.7 |
| ≤6 | — | — | — | — | — | — | — | — | — | — | — |
| 7 | — | — | — | — | — | — | — | — | — | — | — |
| 8 | — | — | — | — | — | — | — | — | — | — | — |
| 9–10 | 29.4 | 28.7 | 28.4 | 28.1 | 27.2 | 26.9 | 26.9 | 26.2 | 26.8 | 26.7 | 26.8 |
| 11–12 | 17.9 | 15.4 | 14.9 | 14.4 | 13.1 | 12.3 | 12.5 | 12.2 | 12.1 | 12.4 | 12.8 |
| 13–15 | 6.9 | 6.6 | 5.0 | 4.5 | 3.4 | 4.0 | 4.2 | 5.1 | 5.2 | 5.3 | 5.8 |
| 16–20 | 8.0 | 6.5 | 6.1 | 5.1 | 4.3 | 3.7 | 3.4 | 3.9 | 3.7 | 3.9 | 3.9 |
| ≥21 | 1.7 | 1.2 | 1.0 | 0.9 | 0.9 | 0.9 | 0.9 | 0.9 | 1.0 | 1.1 | 1.0 |

* See Table 2 for number of areas reporting each year.

† With one exception, no characteristics were available for the excluded states in years before 1998. Oklahoma data available for 2000.

§ Based on known values in data from all areas reporting a given characteristic with ≤15% unknowns. The number of areas adequately reporting a given characteristic varied. For 2000, the number of areas included for residence was 45; age, 48; race, 41; ethnicity, 31; marital status, 39; number of live births, 40; type of procedure, 42; and weeks of gestation, 43. (Early numbers may differ (by 0.1%) from numbers previously published because of adjusting percentages to total 100.0%.)

¶ Black race reported as black and other races through 1984. For 1990–1997, one state included “other” races with blacks.

** Includes all other races.

†† For 1973–1977, data indicate number of living children.

§§ Hysterotomy/hysterectomy included in “other” beginning in 1984. “Other” also includes procedures reported as “other” and medical/nonsurgical procedures (see Table 8) beginning in 1996. For 2000, 6,895 medical/nonsurgical procedures were reported.

¶¶ Data for 36 of 39 areas reporting weeks of gestation.

*** Data for 38 of 41 areas reporting weeks of gestation.

††† Data for 38 of 40 areas reporting weeks of gestation.

§§§ Data for 37 of 40 areas reporting weeks of gestation.

¶¶¶ Data for 40 of 42 areas reporting weeks of gestation.

**** Data for 42 of 44 areas reporting weeks of gestation.

†††† Data for 41 of 43 areas reporting weeks of gestation.

—: Not available.

Table 1. (Continued) Characteristics of women who obtained legal abortions — United States, 1973–2000

| Characteristic | 1984 | 1985 | 1986 | 1987 | 1988 | 1989 | 1990 | 1991 | 1992 | 1993 | 1994 |
|---|---|-----------|-----------|-----------|-----------|-----------|-----------|-----------|--------------------|---------------------|---------------------|
| Reported no. of legal abortions* | 1,333,521 | 1,328,570 | 1,328,112 | 1,353,671 | 1,371,285 | 1,396,658 | 1,429,247 | 1,388,937 | 1,359,146 | 1,330,414 | 1,267,415 |
| | Percent distribution[§] | | | | | | | | | | |
| Residence | | | | | | | | | | | |
| In-state/area | 92.0 | 92.4 | 92.4 | 91.7 | 91.4 | 91.0 | 91.8 | 91.7 | 92.1 | 91.4 | 91.5 |
| Out-of-state/area | 8.0 | 7.6 | 7.6 | 8.3 | 8.6 | 9.0 | 8.2 | 8.3 | 7.9 | 8.6 | 8.5 |
| Age (yrs) | | | | | | | | | | | |
| ≤19 | 26.4 | 26.3 | 25.3 | 25.8 | 25.3 | 24.2 | 22.4 | 21.0 | 20.1 | 20.0 | 20.2 |
| 20–24 | 35.3 | 34.7 | 34.0 | 33.4 | 32.8 | 32.6 | 33.2 | 34.4 | 34.5 | 34.4 | 33.5 |
| ≥25 | 38.3 | 39.0 | 40.7 | 40.8 | 41.9 | 43.2 | 44.4 | 44.6 | 45.4 | 45.6 | 46.3 |
| Race | | | | | | | | | | | |
| White | 67.4 | 66.7 | 67.0 | 66.4 | 64.4 | 64.2 | 64.8 | 63.9 | 61.6 | 60.9 | 60.6 |
| Black | 32.6 | 29.8 | 28.7 | 29.3 | 31.1 | 31.2 | 31.9 | 32.5 | 33.9 | 34.9 | 34.7 |
| Other** | — | 3.5 | 4.3 | 4.3 | 4.5 | 4.6 | 3.3 | 3.6 | 4.5 | 4.2 | 4.7 |
| Ethnicity | | | | | | | | | | | |
| Hispanic | — | — | — | — | — | — | 11.4 | 13.2 | 15.0 | 14.5 | 14.1 |
| Non-Hispanic | — | — | — | — | — | — | 88.6 | 86.8 | 85.0 | 85.5 | 85.9 |
| Marital status | | | | | | | | | | | |
| Married | 20.5 | 19.3 | 20.2 | 20.8 | 20.3 | 20.1 | 21.7 | 21.4 | 20.8 | 20.4 | 19.9 |
| Unmarried | 79.5 | 80.7 | 79.8 | 79.2 | 79.7 | 79.9 | 78.3 | 78.6 | 79.2 | 79.6 | 80.1 |
| No. of live births^{††} | | | | | | | | | | | |
| 0 | 57.0 | 56.3 | 55.1 | 53.6 | 52.4 | 52.2 | 49.1 | 47.8 | 45.9 | 46.5 | 46.2 |
| 1 | 20.9 | 21.6 | 22.1 | 22.8 | 23.4 | 23.6 | 24.4 | 25.3 | 25.9 | 25.8 | 25.9 |
| 2 | 14.4 | 14.5 | 14.9 | 15.5 | 16.0 | 15.9 | 17.0 | 17.5 | 18.0 | 17.8 | 17.8 |
| 3 | 5.1 | 5.1 | 5.3 | 5.5 | 5.6 | 5.7 | 6.1 | 6.4 | 6.7 | 6.6 | 6.7 |
| ≥4 | 2.6 | 2.5 | 2.6 | 2.6 | 2.6 | 2.6 | 3.4 | 3.0 | 3.5 | 3.3 | 3.4 |
| Type of procedure | | | | | | | | | | | |
| Curettage | 96.8 | 97.5 | 97.0 | 97.2 | 98.6 | 98.8 | 98.9 | 99.0 | 98.9 | 99.1 | 99.1 |
| Suction curettage | 93.1 | 94.6 | 94.5 | 93.4 | 95.1 | 97.1 | 97.2 | 96.5 | 95.7 | 95.5 | 96.5 |
| Sharp curettage | 3.7 | 2.9 | 2.5 | 3.8 | 3.5 | 1.7 | 1.7 | 2.5 | 3.2 | 3.6 | 2.6 |
| Intrauterine instillation | 1.9 | 1.7 | 1.4 | 1.3 | 1.1 | 0.9 | 0.8 | 0.6 | 0.7 | 0.6 | 0.5 |
| Other ^{§§} | 1.3 | 0.8 | 1.6 | 1.5 | 0.3 | 0.3 | 0.3 | 0.4 | 0.4 | 0.3 | 0.4 |
| Weeks of gestation | | | | | | | | | | | |
| ≤8 | 50.5 | 50.3 | 51.0 | 50.4 | 48.7 | 49.8 | 51.6 | 52.4 | 52.1 | 52.3 | 53.7 |
| ≤6 | — | — | — | — | — | — | — | — | 14.3 ^{¶¶} | 14.7 ^{***} | 15.7 ^{†††} |
| 7 | — | — | — | — | — | — | — | — | 15.6 ^{¶¶} | 16.2 ^{***} | 16.5 ^{†††} |
| 8 | — | — | — | — | — | — | — | — | 22.2 ^{¶¶} | 21.6 ^{***} | 21.6 ^{†††} |
| 9–10 | 26.4 | 26.6 | 25.8 | 26.0 | 26.4 | 25.8 | 25.3 | 25.1 | 24.2 | 24.4 | 23.5 |
| 11–12 | 12.6 | 12.5 | 12.2 | 12.4 | 12.7 | 12.6 | 11.7 | 11.5 | 12.1 | 11.6 | 10.9 |
| 13–15 | 5.8 | 5.9 | 6.1 | 6.2 | 6.6 | 6.6 | 6.4 | 6.1 | 6.0 | 6.3 | 6.3 |
| 16–20 | 3.9 | 3.9 | 4.1 | 4.2 | 4.5 | 4.2 | 4.0 | 3.8 | 4.2 | 4.1 | 4.3 |
| ≥21 | 0.8 | 0.8 | 0.8 | 0.8 | 1.1 | 1.0 | 1.0 | 1.1 | 1.4 | 1.3 | 1.3 |

Table 1. (Continued) Characteristics of women who obtained legal abortions — United States, 1973–2000

| Characteristic | 1995 | 1996 | 1997 | 1998 | 1999 | 2000 |
|--|------------------------------|-----------|-----------|----------|----------|----------|
| Reported no. of legal abortions* | 1,210,883 | 1,225,937 | 1,186,039 | 884,273 | 861,789 | 857,475 |
| Reported no. of legal abortions excluding AK, CA, NH, OK† | 908,243 | 934,549 | 900,171 | 884,273 | 861,789 | 850,293 |
| | Percent distribution§ | | | | | |
| Residence | | | | | | |
| In-state/area | 91.5 | 91.7 | 91.8 | 91.4 | 91.2 | 91.3 |
| Out-of-state/area | 8.5 | 8.3 | 8.2 | 8.6 | 8.8 | 8.7 |
| Age (yrs) | | | | | | |
| ≤19 | 20.1 | 20.3 | 20.1 | 19.8 | 19.2 | 18.8 |
| 20–24 | 32.5 | 31.8 | 31.7 | 31.8 | 32.2 | 32.8 |
| ≥25 | 47.4 | 47.9 | 48.2 | 48.4 | 48.6 | 48.4 |
| Race¶ | | | | | | |
| White | 59.6 | 59.1 | 58.4 | 58.7 | 56.2 | 56.6 |
| Black | 35.0 | 35.3 | 35.9 | 35.4 | 37.3 | 36.3 |
| Other** | 5.4 | 5.6 | 5.7 | 5.9 | 6.5 | 7.1 |
| Ethnicity | | | | | | |
| Hispanic | 15.1 | 15.7 | 15.6 | 17.1 | 17.3 | 17.2 |
| Non-Hispanic | 84.9 | 84.3 | 84.4 | 82.9 | 82.7 | 82.8 |
| Marital status | | | | | | |
| Married | 19.7 | 19.6 | 19.0 | 18.9 | 19.2 | 18.7 |
| Unmarried | 80.3 | 80.4 | 81.0 | 81.1 | 80.8 | 81.3 |
| No. of live births†† | | | | | | |
| 0 | 45.2 | 44.2 | 42.2 | 41.1 | 40.6 | 40.0 |
| 1 | 26.5 | 26.8 | 27.6 | 27.9 | 27.9 | 27.7 |
| 2 | 18.0 | 18.4 | 19.1 | 19.6 | 19.8 | 20.1 |
| 3 | 6.8 | 7.0 | 7.3 | 7.5 | 7.7 | 7.9 |
| ≥4 | 3.5 | 3.6 | 3.8 | 3.9 | 4.0 | 4.3 |
| Type of procedure | | | | | | |
| Curettage | 98.9 | 98.8 | 98.3 | 98.3 | 98.2 | 97.9 |
| Suction curettage | 96.6 | 96.5 | 97.3 | 96.8 | 96.0 | 95.6 |
| Sharp curettage | 2.3 | 2.3 | 1.0 | 1.5 | 2.2 | 2.3 |
| Intrauterine instillation | 0.5 | 0.4 | 0.4 | 0.3 | 0.2 | 0.4 |
| Other§§ | 0.6 | 0.8 | 1.3 | 1.4 | 1.6 | 1.7 |
| Weeks of gestation | | | | | | |
| ≤8 | 54.0 | 54.6 | 55.4 | 55.7 | 57.6 | 58.1 |
| ≤6 | 15.7††† | 16.3§§§ | 17.6¶¶¶ | 19.2**** | 21.9†††† | 23.3†††† |
| 7 | 17.1††† | 17.4§§§ | 18.1¶¶¶ | 17.8**** | 17.6†††† | 17.8†††† |
| 8 | 21.2††† | 21.0§§§ | 19.6¶¶¶ | 18.8**** | 18.2†††† | 17.1†††† |
| 9–10 | 23.1 | 22.6 | 22.0 | 21.5 | 20.2 | 19.8 |
| 11–12 | 10.9 | 11.0 | 10.7 | 10.9 | 10.2 | 10.2 |
| 13–15 | 6.3 | 6.0 | 6.2 | 6.4 | 6.2 | 6.2 |
| 16–20 | 4.3 | 4.3 | 4.3 | 4.1 | 4.3 | 4.3 |
| ≥21 | 1.4 | 1.5 | 1.4 | 1.4 | 1.5 | 1.4 |

* See Table 2 for number of areas reporting each year.

† With one exception, no characteristics were available for the excluded states in years before 1998. Oklahoma data available for 2000.

§ Based on known values in data from all areas reporting a given characteristic with ≤15% unknowns. The number of areas adequately reporting a given characteristic varied. For 2000, the number of areas included for residence was 45; age, 48; race, 41; ethnicity, 31; marital status, 39; number of live births, 40; type of procedure, 42; and weeks of gestation, 43. (Early numbers may differ (by 0.1%) from numbers previously published because of adjusting percentages to total 100.0%.)

¶ Black race reported as black and other races through 1984. For 1990–1997, one state included "other" races with blacks.

** Includes all other races.

†† For 1973–1977, data indicate number of living children.

§§ Hysterotomy/hysterectomy included in "other" beginning in 1984. "Other" also includes procedures reported as "other" and medical/nonsurgical procedures (see Table 8) beginning in 1996. For 2000, 6,895 medical/nonsurgical procedures were reported.

¶¶ Data for 36 of 39 areas reporting weeks of gestation.

*** Data for 38 of 41 areas reporting weeks of gestation.

††† Data for 38 of 40 areas reporting weeks of gestation.

§§§ Data for 37 of 40 areas reporting weeks of gestation.

¶¶¶ Data for 40 of 42 areas reporting weeks of gestation.

**** Data for 42 of 44 areas reporting weeks of gestation.

†††† Data for 41 of 43 areas reporting weeks of gestation.

—: Not available.

TABLE 2. Number, ratio,* and rate† of legal abortions and source of reporting for all reporting areas and for the 48 areas that reported in 1998–2000, by year — United States, 1970–2000

| Year | No. of legal abortions | Ratio* | Rate† | No. of areas reporting | |
|-----------------------------|------------------------|--------|-------|------------------------|-----------------------|
| | | | | Central health agency§ | Hospitals/facilities¶ |
| All Reporting Areas | | | | | |
| 1970 | 193,491 | 52 | 5 | 18 | 7 |
| 1971 | 485,816 | 137 | 11 | 19 | 7 |
| 1972 | 586,760 | 180 | 13 | 21 | 8 |
| 1973 | 615,831 | 196 | 14 | 26 | 26 |
| 1974 | 763,476 | 242 | 17 | 37 | 15 |
| 1975 | 854,853 | 272 | 18 | 39 | 13 |
| 1976 | 988,267 | 312 | 21 | 41 | 11 |
| 1977 | 1,079,430 | 325 | 22 | 46 | 6 |
| 1978 | 1,157,776 | 347 | 23 | 48 | 4 |
| 1979 | 1,251,921 | 358 | 24 | 47 | 5 |
| 1980 | 1,297,606 | 359 | 25 | 47 | 5 |
| 1981 | 1,300,760 | 358 | 24 | 46 | 6 |
| 1982 | 1,303,980 | 354 | 24 | 46 | 6 |
| 1983 | 1,268,987 | 349 | 23 | 46 | 6 |
| 1984 | 1,333,521 | 364 | 24 | 44 | 8 |
| 1985 | 1,328,570 | 354 | 24 | 44 | 8 |
| 1986 | 1,328,112 | 354 | 23 | 43 | 9 |
| 1987 | 1,353,671 | 356 | 24 | 45 | 7 |
| 1988 | 1,371,285 | 352 | 24 | 45 | 7 |
| 1989 | 1,396,658 | 346 | 24 | 45 | 7 |
| 1990 | 1,429,247 | 344 | 24 | 46 | 6 |
| 1991 | 1,388,937 | 338 | 24 | 47 | 5 |
| 1992 | 1,359,146 | 334 | 23 | 47 | 5 |
| 1993 | 1,330,414 | 333 | 23 | 47 | 5 |
| 1994 | 1,267,415 | 321 | 21 | 47 | 5 |
| 1995 | 1,210,883 | 311 | 20 | 48 | 4 |
| 1996 | 1,225,937 | 315** | 21 | 48 | 4 |
| 1997 | 1,186,039 | 306 | 20 | 48 | 4 |
| 1998 | 884,273 | 264 | 17 | 48 | 0 |
| 1999 | 861,789 | 256 | 17 | 48 | 0 |
| 2000 | 857,475 | 245 | 16 | 49 | 0 |
| 48 Reporting Areas†† | | | | | |
| 1995 | 908,243 | 277 | 18 | 47 | 1 |
| 1996 | 934,549 | 285** | 18 | 47 | 1 |
| 1997 | 900,171 | 274 | 17 | 46 | 2 |
| 1998 | 884,273 | 264 | 17 | 48 | 0 |
| 1999 | 861,789 | 256 | 17 | 48 | 0 |
| 2000 | 850,293 | 246 | 16 | 48 | 0 |

* Number of abortions per 1,000 live births.

† Number of abortions per 1,000 women aged 15–44 years.

§ State health departments and the health departments of New York City and the District of Columbia.

¶ Hospitals or other medical facilities in state.

** Beginning in 1996, the ratio was based on births reported by the National Center for Health Statistics, CDC.

†† Without Alaska, California, and New Hampshire, which did not report number of legal abortions for 1998–2000, and Oklahoma, which did not report for 1998–1999.

TABLE 3. Reported number,* ratio,[†] and rate[§] of legal abortions by residence and occurrence, and percentage of abortions obtained by out-of-state residents,[¶] by state of occurrence — United States, 2000

| State | Residence | | | Occurrence | | | Percentage of legal abortions obtained by out-of-state residents |
|---------------------------------|------------------------|-------|------|------------------------|------------------|------------------|--|
| | No. of legal abortions | Ratio | Rate | No. of legal abortions | Ratio | Rate | |
| Alabama | 11,809 | 187 | 12 | 13,553 | 214 | 14 | 18.5 |
| Alaska** | — | — | — | — | — | — | — |
| Arizona†† | 10,138 | 119 | 9 | 10,064 | 118 | 9 | 2.6 |
| Arkansas | 5,316 | 141 | 9 | 5,501 | 146 | 10 | 17.3 |
| California** | — | — | — | — | — | — | — |
| Colorado | 3,588 | 55 | 4 | 4,215 | 64 | 4 | 18.2 |
| Connecticut | 12,982 | 302 | 18 | 12,908 | 300 | 18 | 3.4 |
| Delaware | 3,615 | 327 | 21 | 5,082 | 460 | 29 | 32.3 |
| Dist. of Columbia | 3,632 | 474 | 25 | 6,659 | 869 | 46 | 55.9 |
| Florida ^{§§} | 391 | 2 | 0 | 88,563 | 434 | 27 | — |
| Georgia | 29,315 | 221 | 15 | 31,678 | 239 | 17 | 8.8 |
| Hawaii | 3,934 | 224 | 15 | 3,941 | 225 | 16 | 0.4 |
| Idaho | 1,568 | 77 | 6 | 801 | 39 | 3 | 2.7 |
| Illinois | 41,815 | 226 | 15 | 45,884 | 248 | 17 | 10.6 |
| Indiana | 14,185 | 162 | 11 | 12,272 | 140 | 9 | 4.1 |
| Iowa ^{¶¶} | 6,513 | 170 | 11 | 5,747 ^{¶¶} | 150 | 9 | — |
| Kansas | 6,379 | 161 | 11 | 12,225 | 308 | 21 | 48.8 |
| Kentucky | 6,429 | 115 | 7 | 4,630 | 83 | 5 | 16.2 |
| Louisiana ^{§§} | 804 | 12 | 1 | 11,384 | 168 | 11 | — |
| Maine | 2,476 | 182 | 9 | 2,536 | 186 | 9 | 3.3 |
| Maryland | 15,347 | 207 | 13 | 12,337 | 166 | 10 | 6.7 |
| Massachusetts†† | 25,104 | 308 | 18 | 27,180 | 333 | 19 | 7.8 |
| Michigan | 26,564 | 195 | 12 | 26,807 | 197 | 12 | 2.9 |
| Minnesota | 13,785 | 204 | 13 | 14,468 | 214 | 13 | 8.7 |
| Mississippi | 7,228 | 164 | 11 | 3,758 | 85 | 6 | 4.8 |
| Missouri | 15,823 | 207 | 13 | 7,884 | 103 | 7 | 9.7 |
| Montana | 2,143 | 196 | 12 | 2,441 | 223 | 13 | 13.2 |
| Nebraska | 3,603 | 146 | 10 | 4,178 | 170 | 11 | 16.1 |
| Nevada | 5,445 | 177 | 13 | 5,972 | 194 | 14 | 8.8 |
| New Hampshire** | — | — | — | — | — | — | — |
| New Jersey | 33,819 | 292 | 19 | 33,026 | 286 | 18 | 3.9 |
| New Mexico | 5,997 | 220 | 15 | 5,465 | 201 | 14 | 4.0 |
| New York | 125,973 | 487 | 30 | 129,678 | 501 | 31 | — |
| City | 89,040 | 736 | — | 94,466 ^{***} | 780 | — | 6.3 ^{†††} |
| State | 36,933 ^{§§§} | 268 | — | 35,212 | 256 | — | 5.6 ^{†††} |
| North Carolina | 27,071 | 225 | 15 | 30,157 | 251 | 17 | 13.1 |
| North Dakota | 936 | 122 | 7 | 1,341 | 175 | 10 | 35.6 |
| Ohio | 35,801 | 230 | 15 | 38,140 | 245 | 16 | 7.7 |
| Oklahoma | 7,516 | 151 | 10 | 7,182 | 144 | 10 | 4.4 |
| Oregon | 12,691 | 277 | 18 | 14,194 | 310 | 20 | 12.3 |
| Pennsylvania | 37,253 | 255 | 15 | 35,630 | 244 | 14 | 4.9 |
| Rhode Island | 4,309 | 345 | 19 | 5,413 | 433 | 23 | 21.9 |
| South Carolina | 10,702 | 191 | 12 | 7,527 | 134 | 9 | 4.2 |
| South Dakota | 956 | 92 | 6 | 878 | 85 | 6 | 19.4 |
| Tennessee | 15,895 | 200 | 13 | 17,479 | 220 | 14 | 18.5 |
| Texas | 73,435 | 202 | 15 | 76,121 | 209 | 16 | 3.7 |
| Utah | 3,344 | 71 | 6 | 3,509 | 74 | 7 | 6.8 |
| Vermont | 1,503 | 231 | 12 | 1,781 | 274 | 14 | 17.2 |
| Virginia | 28,627 | 289 | 18 | 27,999 | 283 | 18 | 6.2 |
| Washington | 26,097 | 322 | 20 | 25,692 | 317 | 20 | 4.7 |
| West Virginia | 2,873 | 138 | 8 | 2,549 | 122 | 7 | 12.5 |
| Wisconsin | 12,178 | 176 | 11 | 11,040 | 159 | 10 | 2.8 |
| Wyoming | 788 | 126 | 8 | 6 | — ^{¶¶¶} | — ^{¶¶¶} | — |
| Other residence ^{****} | 3,386 | — | — | NA | NA | NA | NA |
| Total known | 751,886 | | | 857,475 | 245 | 16 | 8.7 |

TABLE 3. (Continued) Reported number,* ratio,[†] and rate[§] of legal abortions by residence and occurrence, and percentage of abortions obtained by out-of-state residents,[¶] by state of occurrence — United States, 2000

| State | Residence | | | Occurrence | | | Percentage of legal abortions obtained by out-of-state residents |
|---|------------------------|------------|-----------|------------------------|-------|------|--|
| | No. of legal abortions | Ratio | Rate | No. of legal abortions | Ratio | Rate | |
| Unknown residence ^{†††} | 5,642 | | | | | | |
| Not reported by residence ^{§§§§} | 99,947 | | | | | | |
| Total | 857,475 | 245 | 16 | | | | |

* Abortion data reported by central health agencies.

[†] Number of abortions per 1,000 live births. **Source:** Number of live births obtained from Martin JA, Hamilton BE, Ventura SJ, Menacker F, Park MM. Births: final data for 2000. Hyattsville, MD: US Department of Health and Human Services, CDC, National Center for Health Statistics, 2002. (National Vital Statistics Reports; vol. 50, no. 5).

[§] Number of abortions per 1,000 women aged 15–44 years. **Source:** Number of women in this age group was obtained from the National Center for Health Statistics. Bridge modified race summary file. Released January 12, 2003. Available at www.cdc.gov/nchs/about/major/dvs/popbridge/popbridge.htm. File br040100.txt.

[¶] Based on number of abortions for which residence of women was known.

** State did not report abortions.

^{††} Reported numbers of abortions for in-state residents without detailed information regarding out-of-state residents.

^{§§} State did not report abortions by residence; therefore, no information regarding in-state residents is available.

^{¶¶} Reported for own residents only.

*** Reported by the New York City Department of Health.

^{†††} Percentage based on number of abortions reported as “out-of-reporting area.”

^{§§§} Abortions for women whose state of residence was listed as New York.

^{¶¶¶} Ratio and rate not provided because of small numbers.

**** Women whose residence was listed as Canada, Mexico or Other.

^{††††} Reported as unknown residence (3,396) or out-of-state residence, but not specified (2,246).

^{§§§§} Total for states that did not report abortions by residence.

—: Not available or more than 15% with unknown residence; NA: not applicable.

TABLE 4. Reported legal abortions, by age group of women who obtained an abortion and state of occurrence — selected states,* United States, 2000

| State | Age group (yrs) | | | | | | | | | | Total | | | | | | |
|------------------------|-----------------|--------------|----------------|---------------|----------------|---------------|----------------|---------------|----------------|---------------|---------------|--------------|---------------|--------------|--------------|--------------|------------------------|
| | <15 | | 15–19 | | 20–24 | | 25–29 | | 30–34 | | 35–39 | | ≥40 | | Unknown | Total | |
| | No. | (%) | No. | (%) | No. | (%) | No. | (%) | No. | (%) | No. | (%) | No. | (%) | No. | (%)† | |
| Alabama | 122 | (0.9) | 2,581 | (19.0) | 4,790 | (35.3) | 3,174 | (23.4) | 1,622 | (12.0) | 960 | (7.1) | 299 | (2.2) | 5 | (0.0) | 13,553 (100.0) |
| Arizona | 61 | (0.6) | 1,975 | (19.6) | 3,099 | (30.8) | 2,056 | (20.4) | 1,298 | (12.9) | 743 | (7.4) | 265 | (2.6) | 567 | (5.6) | 10,064 (100.0) |
| Arkansas | 56 | (1.0) | 1,102 | (20.0) | 1,905 | (34.6) | 1,239 | (22.5) | 640 | (11.6) | 390 | (7.1) | 117 | (2.1) | 52 | (0.9) | 5,501 (100.0) |
| Colorado | 26 | (0.6) | 907 | (21.5) | 1,362 | (32.3) | 822 | (19.5) | 543 | (12.9) | 389 | (9.2) | 145 | (3.4) | 21 | (0.5) | 4,215 (100.0) |
| Connecticut | 68 | (0.5) | 2,612 | (20.2) | 4,134 | (32.0) | 2,731 | (21.2) | 1,776 | (13.8) | 1,054 | (8.2) | 309 | (2.4) | 224 | (1.7) | 12,908 (100.0) |
| Delaware [§] | 35 | (1.0) | 759 | (22.1) | 1,162 | (33.8) | 754 | (21.9) | 396 | (11.5) | 262 | (7.6) | 74 | (2.1) | 0 | (0.0) | 3,442 (100.0) |
| Dist. of Columbia | 68 | (1.0) | 1,206 | (18.1) | 2,211 | (33.2) | 1,634 | (24.5) | 876 | (13.2) | 505 | (7.6) | 158 | (2.4) | 1 | (0.0) | 6,659 (100.0) |
| Georgia | 268 | (0.8) | 5,176 | (16.3) | 10,550 | (33.3) | 7,737 | (24.4) | 4,648 | (14.7) | 2,556 | (8.1) | 743 | (2.3) | 0 | (0.0) | 31,678 (100.0) |
| Hawaii | 18 | (0.5) | 928 | (23.5) | 1,196 | (30.3) | 803 | (20.4) | 504 | (12.8) | 360 | (9.1) | 124 | (3.1) | 8 | (0.2) | 3,941 (100.0) |
| Idaho | 7 | (0.9) | 159 | (19.9) | 270 | (33.7) | 160 | (20.0) | 92 | (11.5) | 78 | (9.7) | 35 | (4.4) | 0 | (0.0) | 801 (100.0) |
| Illinois [¶] | 346 | (0.8) | 9,390 | (20.5) | 14,838 | (32.3) | 10,618 | (23.1) | 5,887 | (12.8) | 3,436 | (7.5) | 1,114 | (2.4) | 255 | (0.6) | 45,884 (100.0) |
| Indiana | 92 | (0.7) | 2,181 | (17.8) | 4,228 | (34.5) | 2,824 | (23.0) | 1,500 | (12.2) | 909 | (7.4) | 307 | (2.5) | 231 | (1.9) | 12,272 (100.0) |
| Iowa [§] | 40 | (0.7) | 1,227 | (21.4) | 1,960 | (34.1) | 1,138 | (19.8) | 744 | (12.9) | 470 | (8.2) | 163 | (2.8) | 5 | (0.1) | 5,747 (100.0) |
| Kansas | 101 | (0.8) | 2,399 | (19.6) | 4,174 | (34.1) | 2,660 | (21.8) | 1,586 | (13.0) | 969 | (7.9) | 336 | (2.7) | 0 | (0.0) | 12,225 (100.0) |
| Kentucky | 37 | (0.8) | 801 | (17.3) | 1,581 | (34.1) | 1,057 | (22.8) | 640 | (13.8) | 359 | (7.8) | 120 | (2.6) | 35 | (0.8) | 4,630 (100.0) |
| Louisiana | 115 | (1.0) | 2,045 | (18.0) | 4,133 | (36.3) | 2,618 | (23.0) | 1,364 | (12.0) | 800 | (7.0) | 245 | (2.2) | 64 | (0.6) | 11,384 (100.0) |
| Maine | 11 | (0.4) | 571 | (22.5) | 773 | (30.5) | 515 | (20.3) | 338 | (13.3) | 241 | (9.5) | 67 | (2.6) | 20 | (0.8) | 2,536 (100.0) |
| Maryland [§] | 90 | (0.8) | 1,976 | (17.2) | 3,651 | (31.7) | 2,758 | (23.9) | 1,749 | (15.2) | 1,016 | (8.8) | 276 | (2.4) | 0 | (0.0) | 11,516 (100.0) |
| Massachusetts | 103 | (0.4) | 4,560 | (16.8) | 7,859 | (28.9) | 5,821 | (21.4) | 3,869 | (14.2) | 2,541 | (9.3) | 1,017 | (3.7) | 1,410 | (5.2) | 27,180 (100.0) |
| Michigan | 145 | (0.5) | 4,968 | (18.5) | 8,565 | (32.0) | 6,302 | (23.5) | 3,768 | (14.1) | 2,173 | (8.1) | 736 | (2.7) | 150 | (0.6) | 26,807 (100.0) |
| Minnesota | 69 | (0.5) | 2,386 | (16.5) | 4,792 | (33.1) | 3,237 | (22.4) | 2,124 | (14.7) | 1,285 | (8.9) | 552 | (3.8) | 23 | (0.2) | 14,468 (100.0) |
| Mississippi | 49 | (1.3) | 756 | (20.1) | 1,400 | (37.3) | 811 | (21.6) | 407 | (10.8) | 245 | (6.5) | 83 | (2.2) | 7 | (0.2) | 3,758 (100.0) |
| Missouri | 48 | (0.6) | 1,292 | (16.4) | 2,502 | (31.7) | 1,887 | (23.9) | 1,164 | (14.8) | 719 | (9.1) | 268 | (3.4) | 4 | (0.1) | 7,884 (100.0) |
| Montana | 17 | (0.7) | 553 | (22.7) | 839 | (34.4) | 442 | (18.1) | 291 | (11.9) | 209 | (8.6) | 89 | (3.6) | 1 | (0.0) | 2,441 (100.0) |
| Nebraska | 26 | (0.6) | 864 | (20.7) | 1,381 | (33.1) | 885 | (21.2) | 546 | (13.1) | 351 | (8.4) | 125 | (3.0) | 0 | (0.0) | 4,178 (100.0) |
| Nevada | 26 | (0.4) | 1,016 | (17.0) | 1,714 | (28.7) | 1,369 | (22.9) | 854 | (14.3) | 593 | (9.9) | 169 | (2.8) | 231 | (3.9) | 5,972 (100.0) |
| New Jersey | 195 | (0.6) | 6,079 | (18.4) | 10,650 | (32.2) | 7,503 | (22.7) | 4,791 | (14.5) | 2,719 | (8.2) | 940 | (2.8) | 149 | (0.5) | 33,026 (100.0) |
| New Mexico | 39 | (0.7) | 1,230 | (22.5) | 1,741 | (31.9) | 1,189 | (21.8) | 650 | (11.9) | 421 | (7.7) | 171 | (3.1) | 24 | (0.4) | 5,465 (100.0) |
| New York | 819 | (0.6) | 23,097 | (17.8) | 38,902 | (30.0) | 29,562 | (22.8) | 20,648 | (15.9) | 12,344 | (9.5) | 4,026 | (3.1) | 280 | (0.2) | 129,678 (100.0) |
| City | 599 | (0.6) | 15,497 | (16.4) | 27,799 | (29.4) | 22,502 | (23.8) | 15,735 | (16.7) | 9,193 | (9.7) | 2,953 | (3.1) | 188 | (0.2) | 94,466 (100.0) |
| State | 220 | (0.6) | 7,600 | (21.6) | 11,103 | (31.5) | 7,060 | (20.0) | 4,913 | (14.0) | 3,151 | (8.9) | 1,073 | (3.0) | 92 | (0.3) | 35,212 (100.0) |
| North Carolina | 216 | (0.7) | 5,021 | (16.6) | 10,212 | (33.9) | 6,955 | (23.1) | 3,934 | (13.0) | 2,063 | (6.8) | 633 | (2.1) | 1,123 | (3.7) | 30,157 (100.0) |
| North Dakota | 7 | (0.5) | 290 | (21.6) | 440 | (32.8) | 274 | (20.4) | 162 | (12.1) | 128 | (9.5) | 40 | (3.0) | 0 | (0.0) | 1,341 (100.0) |
| Ohio | 314 | (0.8) | 6,860 | (18.0) | 13,029 | (34.2) | 8,885 | (23.3) | 5,073 | (13.3) | 2,957 | (7.8) | 1,001 | (2.6) | 21 | (0.1) | 38,140 (100.0) |
| Oklahoma | 38 | (0.5) | 1,487 | (20.7) | 2,463 | (34.3) | 1,573 | (21.9) | 813 | (11.3) | 572 | (8.0) | 175 | (2.4) | 61 | (0.8) | 7,182 (100.0) |
| Oregon | 69 | (0.5) | 2,753 | (19.4) | 4,638 | (32.7) | 3,118 | (22.0) | 1,983 | (14.0) | 1,179 | (8.3) | 434 | (3.1) | 20 | (0.1) | 14,194 (100.0) |
| Pennsylvania | 304 | (0.9) | 6,505 | (18.3) | 11,643 | (32.7) | 7,800 | (21.9) | 5,196 | (14.6) | 3,063 | (8.6) | 1,119 | (3.1) | 0 | (0.0) | 35,630 (100.0) |
| Rhode Island | 30 | (0.6) | 939 | (17.3) | 1,821 | (33.6) | 1,132 | (20.9) | 821 | (15.2) | 470 | (8.7) | 200 | (3.7) | 0 | (0.0) | 5,413 (100.0) |
| South Carolina | 55 | (0.7) | 1,533 | (20.4) | 2,477 | (32.9) | 1,720 | (22.9) | 951 | (12.6) | 608 | (8.1) | 183 | (2.4) | 0 | (0.0) | 7,527 (100.0) |
| South Dakota | 4 | (0.5) | 185 | (21.1) | 294 | (33.5) | 182 | (20.7) | 123 | (14.0) | 65 | (7.4) | 25 | (2.8) | 0 | (0.0) | 878 (100.0) |
| Tennessee | 118 | (0.7) | 3,063 | (17.5) | 6,171 | (35.3) | 4,180 | (23.9) | 2,258 | (12.9) | 1,307 | (7.5) | 368 | (2.1) | 14 | (0.1) | 17,479 (100.0) |
| Texas | 323 | (0.4) | 11,772 | (15.5) | 26,457 | (34.8) | 17,933 | (23.6) | 10,808 | (14.2) | 6,056 | (8.0) | 2,189 | (2.9) | 583 | (0.8) | 76,121 (100.0) |
| Utah | 24 | (0.7) | 628 | (17.9) | 1,224 | (34.9) | 773 | (22.0) | 463 | (13.2) | 281 | (8.0) | 102 | (2.9) | 14 | (0.4) | 3,509 (100.0) |
| Vermont | 4 | (0.2) | 369 | (20.7) | 594 | (33.4) | 347 | (19.5) | 223 | (12.5) | 166 | (9.3) | 77 | (4.3) | 1 | (0.1) | 1,781 (100.0) |
| Virginia | 153 | (0.5) | 4,435 | (15.8) | 9,092 | (32.5) | 6,508 | (23.2) | 4,190 | (15.0) | 2,557 | (9.1) | 846 | (3.0) | 218 | (0.8) | 27,999 (100.0) |
| Washington | 122 | (0.5) | 5,109 | (19.9) | 8,069 | (31.4) | 5,550 | (21.6) | 3,786 | (14.7) | 2,219 | (8.6) | 821 | (3.2) | 16 | (0.1) | 25,692 (100.0) |
| West Virginia | 21 | (0.8) | 511 | (20.0) | 905 | (35.5) | 530 | (20.8) | 346 | (13.6) | 190 | (7.5) | 45 | (1.8) | 1 | (0.0) | 2,549 (100.0) |
| Wisconsin [§] | 74 | (0.7) | 2,056 | (19.2) | 3,510 | (32.7) | 2,407 | (22.4) | 1,427 | (13.3) | 947 | (8.8) | 308 | (2.9) | 0 | (0.0) | 10,729 (100.0) |
| Wyoming | 0 | (0.0) | 1 | (16.7) | 2 | (33.3) | 1 | (16.7) | 1 | (16.7) | 1 | (16.7) | 0 | (0.0) | 0 | (0.0) | 6 (100.0) |
| Total | 4,973 | (0.6) | 138,313 | (18.1) | 249,403 | (32.6) | 174,174 | (22.7) | 107,873 | (14.1) | 63,926 | (8.3) | 21,639 | (2.8) | 5,839 | (0.8) | 766,140 (100.0) |
| Abortion ratio** | 708 | | 361 | | 300 | | 198 | | 145 | | 181 | | 301 | | | | 232 |
| Abortion rate†† | 2 | | 17 | | 33 | | 22 | | 13 | | 7 | | 2 | | | | 15 |

* Data from 46 states, the District of Columbia, and New York City.

† Percentages might not add to 100.0 because of rounding.

§ Includes residents only.

¶ Unpublished small numbers distributed as the known numbers using data from public use tape.

** Calculated as the number of legal abortions obtained by women in a given age group per 1,000 live births to women in the same age group for these states. For each state, data for women of unknown age were distributed according to the known age distribution for that state.

†† Calculated as the number of legal abortions obtained by women in a given age group per 1,000 women in the same age group for these states. Women aged 13–14 years were used for the denominator for the <15 years age group, and women aged 40–44 years were used for the denominator for the ≥40 years age group. For each state, data for women of unknown age were distributed according to the known age distribution for that state.

TABLE 5. Reported legal abortions obtained by adolescents, by known age and state of occurrence — selected states,* United States, 2000

| State | Age (yrs) | | | | | | | | | | | | | |
|-------------------|--------------|--------------|--------------|--------------|---------------|---------------|---------------|---------------|---------------|---------------|---------------|---------------|----------------|----------------|
| | <15 | | 15 | | 16 | | 17 | | 18 | | 19 | | Total | |
| | No. | (%) | No. | (%) | No. | (%) | No. | (%) | No. | (%) | No. | (%) | No. | (%)† |
| Alabama | 122 | (4.5) | 184 | (6.8) | 284 | (10.5) | 439 | (16.2) | 779 | (28.8) | 895 | (33.1) | 2,703 | (100.0) |
| Arizona | 61 | (3.0) | 110 | (5.4) | 225 | (11.1) | 365 | (17.9) | 604 | (29.7) | 671 | (33.0) | 2,036 | (100.0) |
| Arkansas | 56 | (4.8) | 66 | (5.7) | 147 | (12.7) | 201 | (17.4) | 340 | (29.4) | 348 | (30.1) | 1,158 | (100.0) |
| Colorado | 26 | (2.8) | 48 | (5.1) | 105 | (11.3) | 206 | (22.1) | 252 | (27.0) | 296 | (31.7) | 933 | (100.0) |
| Connecticut | 68 | (2.5) | 178 | (6.6) | 329 | (12.3) | 623 | (23.2) | 690 | (25.7) | 792 | (29.6) | 2,680 | (100.0) |
| Delaware§ | 35 | (4.4) | 55 | (6.9) | 113 | (14.2) | 150 | (18.9) | 195 | (24.6) | 246 | (31.0) | 794 | (100.0) |
| Dist. of Columbia | 68 | (5.3) | 96 | (7.5) | 164 | (12.9) | 249 | (19.5) | 340 | (26.7) | 357 | (28.0) | 1,274 | (100.0) |
| Georgia | 268 | (4.9) | 334 | (6.1) | 604 | (11.1) | 908 | (16.7) | 1,508 | (27.7) | 1,822 | (33.5) | 5,444 | (100.0) |
| Hawaii | 18 | (1.9) | 55 | (5.8) | 101 | (10.7) | 189 | (20.0) | 264 | (27.9) | 319 | (33.7) | 946 | (100.0) |
| Idaho | 7 | (4.2) | 16 | (9.6) | 15 | (9.0) | 22 | (13.3) | 53 | (31.9) | 53 | (31.9) | 166 | (100.0) |
| Indiana | 92 | (4.0) | 152 | (6.7) | 231 | (10.2) | 345 | (15.2) | 657 | (28.9) | 796 | (35.0) | 2,273 | (100.0) |
| Iowa§ | 40 | (3.2) | 86 | (6.8) | 122 | (9.6) | 227 | (17.9) | 384 | (30.3) | 408 | (32.2) | 1,267 | (100.0) |
| Kansas | 101 | (4.0) | 168 | (6.7) | 321 | (12.8) | 395 | (15.8) | 695 | (27.8) | 820 | (32.8) | 2,500 | (100.0) |
| Kentucky | 37 | (4.4) | 52 | (6.2) | 89 | (10.6) | 133 | (15.9) | 236 | (28.2) | 291 | (34.7) | 838 | (100.0) |
| Louisiana | 115 | (5.3) | 153 | (7.1) | 216 | (10.0) | 338 | (15.6) | 615 | (28.5) | 723 | (33.5) | 2,160 | (100.0) |
| Maine | 11 | (1.9) | 23 | (4.0) | 75 | (12.9) | 116 | (19.9) | 168 | (28.9) | 189 | (32.5) | 582 | (100.0) |
| Massachusetts | 103 | (2.2) | 234 | (5.0) | 456 | (9.8) | 738 | (15.8) | 1,448 | (31.1) | 1,684 | (36.1) | 4,663 | (100.0) |
| Michigan | 145 | (2.8) | 284 | (5.6) | 581 | (11.4) | 895 | (17.5) | 1,519 | (29.7) | 1,689 | (33.0) | 5,113 | (100.0) |
| Minnesota | 69 | (2.8) | 146 | (5.9) | 262 | (10.7) | 349 | (14.2) | 771 | (31.4) | 858 | (34.9) | 2,455 | (100.0) |
| Mississippi | 49 | (6.1) | 65 | (8.1) | 90 | (11.2) | 96 | (11.9) | 246 | (30.6) | 259 | (32.2) | 805 | (100.0) |
| Missouri | 48 | (3.6) | 86 | (6.4) | 119 | (8.9) | 160 | (11.9) | 435 | (32.5) | 492 | (36.7) | 1,340 | (100.0) |
| Montana | 17 | (3.0) | 42 | (7.4) | 68 | (11.9) | 109 | (19.1) | 159 | (27.9) | 175 | (30.7) | 570 | (100.0) |
| Nebraska | 26 | (2.9) | 74 | (8.3) | 107 | (12.0) | 146 | (16.4) | 225 | (25.3) | 312 | (35.1) | 890 | (100.0) |
| Nevada | 26 | (2.5) | 52 | (5.0) | 134 | (12.9) | 206 | (19.8) | 304 | (29.2) | 320 | (30.7) | 1,042 | (100.0) |
| New Jersey | 195 | (3.1) | 416 | (6.6) | 703 | (11.2) | 1,235 | (19.7) | 1,718 | (27.4) | 2,007 | (32.0) | 6,274 | (100.0) |
| New Mexico | 39 | (3.1) | 92 | (7.2) | 154 | (12.1) | 268 | (21.1) | 361 | (28.4) | 355 | (28.0) | 1,269 | (100.0) |
| New York | 819 | (3.4) | 1,656 | (6.9) | 3,130 | (13.1) | 4,610 | (19.3) | 6,367 | (26.6) | 7,334 | (30.7) | 23,916 | (100.0) |
| City | 599 | (3.7) | 1,153 | (7.2) | 2,149 | (13.4) | 3,056 | (19.0) | 4,251 | (26.4) | 4,888 | (30.4) | 16,096 | (100.0) |
| State | 220 | (2.8) | 503 | (6.4) | 981 | (12.5) | 1,554 | (19.9) | 2,116 | (27.1) | 2,446 | (31.3) | 7,820 | (100.0) |
| North Carolina | 216 | (4.1) | 349 | (6.7) | 565 | (10.8) | 758 | (14.5) | 1,527 | (29.2) | 1,822 | (34.8) | 5,237 | (100.0) |
| North Dakota | 7 | (2.4) | 15 | (5.1) | 36 | (12.1) | 52 | (17.5) | 87 | (29.3) | 100 | (33.7) | 297 | (100.0) |
| Ohio | 314 | (4.4) | 486 | (6.8) | 838 | (11.7) | 1,111 | (15.5) | 1,967 | (27.4) | 2,458 | (34.3) | 7,174 | (100.0) |
| Oklahoma | 38 | (2.5) | 106 | (7.0) | 173 | (11.3) | 274 | (18.0) | 441 | (28.9) | 493 | (32.3) | 1,525 | (100.0) |
| Oregon | 69 | (2.4) | 154 | (5.5) | 324 | (11.5) | 514 | (18.2) | 817 | (29.0) | 944 | (33.5) | 2,822 | (100.0) |
| Pennsylvania | 304 | (4.5) | 455 | (6.7) | 723 | (10.6) | 946 | (13.9) | 2,030 | (29.8) | 2,351 | (34.5) | 6,809 | (100.0) |
| Rhode Island | 30 | (3.1) | 45 | (4.6) | 91 | (9.4) | 121 | (12.5) | 316 | (32.6) | 366 | (37.8) | 969 | (100.0) |
| South Carolina | 55 | (3.5) | 116 | (7.3) | 180 | (11.3) | 352 | (22.2) | 387 | (24.4) | 498 | (31.4) | 1,588 | (100.0) |
| South Dakota | 4 | (2.1) | 11 | (5.8) | 13 | (6.9) | 29 | (15.3) | 64 | (33.9) | 68 | (36.0) | 189 | (100.0) |
| Tennessee | 118 | (3.7) | 202 | (6.4) | 351 | (11.0) | 442 | (13.9) | 916 | (28.8) | 1,152 | (36.2) | 3,181 | (100.0) |
| Texas | 323 | (2.7) | 588 | (4.9) | 1,151 | (9.5) | 1,917 | (15.8) | 3,299 | (27.3) | 4,817 | (39.8) | 12,095 | (100.0) |
| Utah | 24 | (3.7) | 39 | (6.0) | 81 | (12.4) | 95 | (14.6) | 194 | (29.8) | 219 | (33.6) | 652 | (100.0) |
| Vermont | 4 | (1.1) | 17 | (4.6) | 48 | (12.9) | 74 | (19.8) | 111 | (29.8) | 119 | (31.9) | 373 | (100.0) |
| Virginia | 153 | (3.3) | 269 | (5.9) | 443 | (9.7) | 725 | (15.8) | 1,336 | (29.1) | 1,662 | (36.2) | 4,588 | (100.0) |
| Washington | 122 | (2.3) | 303 | (5.8) | 658 | (12.6) | 979 | (18.7) | 1,469 | (28.1) | 1,700 | (32.5) | 5,231 | (100.0) |
| West Virginia | 21 | (3.9) | 21 | (3.9) | 63 | (11.8) | 97 | (18.2) | 155 | (29.1) | 175 | (32.9) | 532 | (100.0) |
| Wisconsin§ | 74 | (3.5) | 144 | (6.8) | 240 | (11.3) | 331 | (15.5) | 646 | (30.3) | 695 | (32.6) | 2,130 | (100.0) |
| Wyoming | 0 | (0.0) | 0 | (0.0) | 1 | (100.0) | 0 | (0.0) | 0 | (0.0) | 0 | (0.0) | 1 | (100.0) |
| Total | 4,537 | (3.5) | 8,243 | (6.3) | 14,924 | (11.4) | 22,535 | (17.1) | 37,095 | (28.2) | 44,150 | (33.6) | 131,484 | (100.0) |
| Abortion ratio¶ | 701 | | 504 | | 409 | | 343 | | 368 | | 324 | | 363 | |
| Abortion rate** | 2 | | 6 | | 10 | | 15 | | 25 | | 29 | | 13 | |

* Data from 44 states, the District of Columbia, and New York City.

† Percentages might not add to 100.0 because of rounding.

§ Includes residents only.

¶ Calculated as the number of legal abortions obtained by women of a given age per 1,000 live births to women of the same age for these states. For each state, data for women whose age was unknown were distributed according to the known age distribution for that state.

** Calculated as the number of legal abortions obtained by women of a given age per 1,000 women of the same age for these states; women aged 13–14 years were used for the denominator for the <15 years age group. For each state, data for women whose age was unknown were distributed according to the known age distribution for that state.

TABLE 6. Reported legal abortions, by weeks of gestation* and state of occurrence — selected states,† United States, 2000

| State | Weeks of gestation | | | | | | | | | | | | Total | | | |
|---------------------------|---------------------|---------------|---------------------|---------------|---------------------|---------------|---------------|--------------|---------------|--------------|--------------|--------------|--------------|--------------|----------------|------------------|
| | ≤8 | | 9–10 | | 11–12 | | 13–15 | | 16–20 | | ≥21 | | | | Unknown | |
| | No. | (%) | No. | (%) | No. | (%) | No. | (%) | No. | (%) | No. | (%) | No. | (%) | No. | (%) [§] |
| Alabama | 7,734 | (57.1) | 2,845 | (21.0) | 1,368 | (10.1) | 1,008 | (7.4) | 499 | (3.7) | 81 | (0.6) | 18 | (0.1) | 13,553 | (100.0) |
| Arizona [¶] | 5,120 | (50.9) | 2,020 | (20.1) | 794 | (7.9) | 702 | (7.0) | 491 | (4.9) | 6 | (0.1) | 931 | (9.3) | 10,064 | (100.0) |
| Arkansas** | 2,927 | (53.2) | 954 | (17.3) | 489 | (8.9) | 494 | (9.0) | 576 | (10.5) | 28 | (0.5) | 33 | (0.6) | 5,501 | (100.0) |
| Colorado [¶] | 2,184 | (51.8) | 938 | (22.3) | 474 | (11.2) | 296 | (7.0) | 138 | (3.3) | 144 | (3.4) | 41 | (1.0) | 4,215 | (100.0) |
| Connecticut ^{¶¶} | 7,480 ^{††} | (57.9) | 2,543 ^{††} | (19.7) | 1,306 ^{††} | (10.1) | 734 | (5.7) | 356 | (2.8) | 24 | (0.2) | 465 | (3.6) | 12,908 | (100.0) |
| Delaware ^{¶¶§§} | 1,861 | (54.1) | 749 | (21.8) | 441 | (12.8) | 232 | (6.7) | 144 | (4.2) | 15 | (0.4) | 0 | (0.0) | 3,442 | (100.0) |
| Dist. of Columbia | 2,937 ^{††} | (44.1) | 1,761 ^{††} | (26.4) | 889 ^{††} | (13.4) | 582 | (8.7) | 286 | (4.3) | 0 | (0.0) | 204 | (3.1) | 6,659 | (100.0) |
| Georgia [¶] | 15,783 | (49.8) | 7,377 | (23.3) | 3,966 | (12.5) | 2,093 | (6.6) | 1,647 | (5.2) | 812 | (2.6) | 0 | (0.0) | 31,678 | (100.0) |
| Hawaii [¶] | 1,845 | (46.8) | 1,018 | (25.8) | 545 | (13.8) | 226 | (5.7) | 237 | (6.0) | 40 | (1.0) | 30 | (0.8) | 3,941 | (100.0) |
| Idaho | 476 | (59.4) | 217 | (27.1) | 74 | (9.2) | 14 | (1.7) | 12 | (1.5) | 5 | (0.6) | 3 | (0.4) | 801 | (100.0) |
| Indiana [¶] | 7,753 | (63.2) | 2,704 | (22.0) | 1,294 | (10.5) | 204 | (1.7) | 163 | (1.3) | 0 | (0.0) | 154 | (1.3) | 12,272 | (100.0) |
| Iowa ^{§§} | 3,857 | (67.1) | 889 | (15.5) | 538 | (9.4) | 254 | (4.4) | 199 | (3.5) | 2 | (0.0) | 8 | (0.1) | 5,747 | (100.0) |
| Kansas [¶] | 7,195 | (58.9) | 1,944 | (15.9) | 1,080 | (8.8) | 717 | (5.9) | 582 | (4.8) | 706 | (5.8) | 1 | (0.0) | 12,225 | (100.0) |
| Kentucky | 2,281 | (49.3) | 989 | (21.4) | 586 | (12.7) | 361 | (7.8) | 330 | (7.1) | 74 | (1.6) | 9 | (0.2) | 4,630 | (100.0) |
| Louisiana [¶] | 5,165 | (45.4) | 2,616 | (23.0) | 1,396 | (12.3) | 1,147 | (10.1) | 643 | (5.6) | 311 | (2.7) | 106 | (0.9) | 11,384 | (100.0) |
| Maine ^{¶¶} | 1,554 | (61.3) | 665 | (26.2) | 279 | (11.0) | 16 | (0.6) | 10 | (0.4) | 2 | (0.1) | 10 | (0.4) | 2,536 | (100.0) |
| Michigan | 15,673 | (58.5) | 5,155 | (19.2) | 2,175 | (8.1) | 1,787 | (6.7) | 1,228 | (4.6) | 275 | (1.0) | 514 | (1.9) | 26,807 | (100.0) |
| Minnesota [¶] | 8,700 | (60.1) | 2,668 | (18.4) | 1,531 | (10.6) | 784 | (5.4) | 671 | (4.6) | 114 | (0.8) | 0 | (0.0) | 14,468 | (100.0) |
| Mississippi | 1,951 | (51.9) | 837 | (22.3) | 533 | (14.2) | 356 | (9.5) | 44 | (1.2) | 7 | (0.2) | 30 | (0.8) | 3,758 | (100.0) |
| Missouri | 4,514 | (57.3) | 1,813 | (23.0) | 885 | (11.2) | 384 | (4.9) | 227 | (2.9) | 28 | (0.4) | 33 | (0.4) | 7,884 | (100.0) |
| Montana [¶] | 1,220 | (50.0) | 507 | (20.8) | 281 | (11.5) | 229 | (9.4) | 133 | (5.4) | 46 | (1.9) | 25 | (1.0) | 2,441 | (100.0) |
| Nevada [¶] | 3,403 | (57.0) | 1,148 | (19.2) | 642 | (10.8) | 359 | (6.0) | 245 | (4.1) | 63 | (1.1) | 112 | (1.9) | 5,972 | (100.0) |
| New Jersey | 18,149 | (55.0) | 5,848 | (17.7) | 2,189 | (6.6) | 3,141 | (9.5) | 2,788 | (8.4) | 647 | (2.0) | 264 | (0.8) | 33,026 | (100.0) |
| New Mexico** | 3,019 | (55.2) | 1,109 | (20.3) | 577 | (10.6) | 426 | (7.8) | 258 | (4.7) | 41 | (0.8) | 35 | (0.6) | 5,465 | (100.0) |
| New York City | 56,514 | (59.8) | 16,296 | (17.3) | 8,534 | (9.0) | 5,004 | (5.3) | 4,998 | (5.3) | 2,303 | (2.4) | 817 | (0.9) | 94,466 | (100.0) |
| North Carolina | 19,904 | (66.0) | 4,040 | (13.4) | 2,298 | (7.6) | 1,318 | (4.4) | 505 | (1.7) | 59 | (0.2) | 2,033 | (6.7) | 30,157 | (100.0) |
| North Dakota [¶] | 810 | (60.4) | 229 | (17.1) | 164 | (12.2) | 129 | (9.6) | 8 | (0.6) | 0 | (0.0) | 1 | (0.1) | 1,341 | (100.0) |
| Ohio [¶] | 20,161 | (52.9) | 8,072 | (21.2) | 4,221 | (11.1) | 2,918 | (7.7) | 2,090 | (5.5) | 670 | (1.8) | 8 | (0.0) | 38,140 | (100.0) |
| Oklahoma | 3,698 | (51.5) | 1,601 | (22.3) | 1,198 | (16.7) | 370 | (5.2) | 217 | (3.0) | 30 | (0.4) | 68 | (0.9) | 7,182 | (100.0) |
| Oregon [¶] | 8,542 | (60.2) | 2,501 | (17.6) | 1,249 | (8.8) | 824 | (5.8) | 727 | (5.1) | 281 | (2.0) | 70 | (0.5) | 14,194 | (100.0) |
| Pennsylvania | 19,237 | (54.0) | 7,725 | (21.7) | 3,887 | (10.9) | 2,578 | (7.2) | 1,608 | (4.5) | 595 | (1.7) | 0 | (0.0) | 35,630 | (100.0) |
| Rhode Island | 3,596 | (66.4) | 881 | (16.3) | 447 | (8.3) | 295 | (5.4) | 175 | (3.2) | 8 | (0.1) | 11 | (0.2) | 5,413 | (100.0) |
| South Carolina | 4,349 | (57.8) | 1,922 | (25.5) | 951 | (12.6) | 96 | (1.3) | 30 | (0.4) | 20 | (0.3) | 159 | (2.1) | 7,527 | (100.0) |
| South Dakota [¶] | 484 | (55.1) | 235 | (26.8) | 121 | (13.8) | 23 | (2.6) | 4 | (0.5) | 0 | (0.0) | 11 | (1.3) | 878 | (100.0) |
| Tennessee [¶] | 10,656 | (61.0) | 3,721 | (21.3) | 2,272 | (13.0) | 744 | (4.3) | 37 | (0.2) | 24 | (0.1) | 25 | (0.1) | 17,479 | (100.0) |
| Texas [¶] | 44,873 | (58.9) | 14,091 | (18.5) | 7,105 | (9.3) | 4,814 | (6.3) | 2,818 | (3.7) | 889 | (1.2) | 1,531 | (2.0) | 76,121 | (100.0) |
| Utah [¶] | 2,261 | (64.4) | 716 | (20.4) | 233 | (6.6) | 150 | (4.3) | 103 | (2.9) | 0 | (0.0) | 46 | (1.3) | 3,509 | (100.0) |
| Vermont | 1,131 | (63.5) | 412 | (23.1) | 161 | (9.0) | 71 | (4.0) | 5 | (0.3) | 1 | (0.1) | 0 | (0.0) | 1,781 | (100.0) |
| Virginia [¶] | 18,354 | (65.6) | 5,700 | (20.4) | 2,882 | (10.3) | 676 | (2.4) | 243 | (0.9) | 64 | (0.2) | 80 | (0.3) | 27,999 | (100.0) |
| Washington [¶] | 14,625 | (56.9) | 4,954 | (19.3) | 2,652 | (10.3) | 1,713 | (6.7) | 1,228 | (4.8) | 491 | (1.9) | 29 | (0.1) | 25,692 | (100.0) |
| West Virginia*** | 1,079 | (42.3) | 709 | (27.8) | 396 | (15.5) | 221 | (8.7) | 125 | (4.9) | 11 | (0.4) | 8 | (0.3) | 2,549 | (100.0) |
| Wisconsin ^{¶¶§§} | 5,630 | (52.5) | 2,253 | (21.0) | 1,277 | (11.9) | 799 | (7.4) | 579 | (5.4) | 191 | (1.8) | 0 | (0.0) | 10,729 | (100.0) |
| Wyoming*** | 5 | (83.3) | 1 | (16.7) | 0 | (0.0) | 0 | (0.0) | 0 | (0.0) | 0 | (0.0) | 0 | (0.0) | 6 | (100.0) |
| Total | 368,690 | (57.4) | 125,373 | (19.5) | 64,380 | (10.0) | 39,289 | (6.1) | 27,407 | (4.3) | 9,108 | (1.4) | 7,923 | (1.2) | 642,170 | (100.0) |

* Data for legal abortions obtained at ≤8 weeks of gestation are presented in Table 7 by ≤6, 7, and 8 weeks of gestation.

† Data from 41 states, the District of Columbia, and New York City; excludes two states where weeks of gestation was reported as unknown for >15% of women.

§ Percentages might not add to 100.0 because of rounding.

¶ Weeks of gestation based on physicians' estimates.

** Weeks of gestation based on physicians' estimates only if date of last menstrual period was unknown or unreliable.

†† Numbers obtained at ≤12 weeks of gestation redistributed.

§§ Includes residents only.

¶¶ Weeks of gestation based on date of last menstrual period only if physicians' estimates were unknown.

*** Weeks of gestation based on physicians' estimates only if date of last menstrual period was unknown.

TABLE 7. Reported legal abortions obtained at ≤ 8 weeks of gestation, by known weeks of gestation and state of occurrence — selected states,* United States, 2000

| State | Weeks of gestation | | | | Total obtained at | | ≤ 8 weeks of gestation | |
|---------------------------------|--------------------|---------------|----------------|---------------|-------------------|---------------|-----------------------------|------------------|
| | ≤ 6 | | 7 | | 8 | | | |
| | No. | (%) | No. | (%) | No. | (%) | No. | (%) [†] |
| Alabama | 1,999 | (14.7) | 3,059 | (22.6) | 2,676 | (19.7) | 7,734 | (57.1) |
| Arizona [§] | 1,311 | (13.0) | 1,928 | (19.2) | 1,881 | (18.7) | 5,120 | (50.9) |
| Arkansas [¶] | 1,425 | (25.9) | 835 | (15.2) | 667 | (12.1) | 2,927 | (53.2) |
| Colorado [§] | 682 | (16.2) | 822 | (19.5) | 680 | (16.1) | 2,184 | (51.8) |
| Delaware ^{§**} | 718 | (20.9) | 567 | (16.5) | 576 | (16.7) | 1,861 | (54.1) |
| Dist. of Columbia ^{††} | 316 | (4.7) | 550 | (8.3) | 2,071 | (31.1) | 2,937 | (44.1) |
| Georgia [§] | 5,126 | (16.2) | 5,493 | (17.3) | 5,164 | (16.3) | 15,783 | (49.8) |
| Hawaii [§] | 294 | (7.5) | 681 | (17.3) | 870 | (22.1) | 1,845 | (46.8) |
| Idaho | 154 | (19.2) | 155 | (19.4) | 167 | (20.8) | 476 | (59.4) |
| Indiana [§] | 3,333 | (27.2) | 2,275 | (18.5) | 2,145 | (17.5) | 7,753 | (63.2) |
| Iowa ^{**} | 2,237 | (38.9) | 855 | (14.9) | 765 | (13.3) | 3,857 | (67.1) |
| Kansas [§] | 3,421 | (28.0) | 2,207 | (18.1) | 1,567 | (12.8) | 7,195 | (58.9) |
| Kentucky | 486 | (10.5) | 999 | (21.6) | 796 | (17.2) | 2,281 | (49.3) |
| Louisiana [§] | 1,305 | (11.5) | 1,698 | (14.9) | 2,162 | (19.0) | 5,165 | (45.4) |
| Maine ^{§§} | 364 | (14.4) | 597 | (23.5) | 593 | (23.4) | 1,554 | (61.3) |
| Michigan | 6,716 | (25.1) | 4,431 | (16.5) | 4,526 | (16.9) | 15,673 | (58.5) |
| Minnesota [§] | 3,012 | (20.8) | 3,299 | (22.8) | 2,389 | (16.5) | 8,700 | (60.1) |
| Mississippi | 749 | (19.9) | 639 | (17.0) | 563 | (15.0) | 1,951 | (51.9) |
| Missouri | 1,840 | (23.3) | 1,438 | (18.2) | 1,236 | (15.7) | 4,514 | (57.3) |
| Montana [§] | 431 | (17.7) | 356 | (14.6) | 433 | (17.7) | 1,220 | (50.0) |
| Nevada [§] | 1,080 | (18.1) | 1,116 | (18.7) | 1,207 | (20.2) | 3,403 | (57.0) |
| New Jersey | 7,781 | (23.6) | 4,577 | (13.9) | 5,791 | (17.5) | 18,149 | (55.0) |
| New Mexico [¶] | 1,240 | (22.7) | 934 | (17.1) | 845 | (15.5) | 3,019 | (55.2) |
| New York City | 25,654 | (27.2) | 17,072 | (18.1) | 13,788 | (14.6) | 56,514 | (59.8) |
| North Carolina | 12,329 | (40.9) | 4,159 | (13.8) | 3,416 | (11.3) | 19,904 | (66.0) |
| North Dakota [§] | 259 | (19.3) | 365 | (27.2) | 186 | (13.9) | 810 | (60.4) |
| Ohio [§] | 6,970 | (18.3) | 6,606 | (17.3) | 6,585 | (17.3) | 20,161 | (52.9) |
| Oklahoma | 1,645 | (22.9) | 910 | (12.7) | 1,143 | (15.9) | 3,698 | (51.5) |
| Oregon [§] | 3,513 | (24.7) | 2,758 | (19.4) | 2,271 | (16.0) | 8,542 | (60.2) |
| Pennsylvania | 7,334 | (20.6) | 5,598 | (15.7) | 6,305 | (17.7) | 19,237 | (54.0) |
| Rhode Island | 1,820 | (33.6) | 1,023 | (18.9) | 753 | (13.9) | 3,596 | (66.4) |
| South Carolina | 1,556 | (20.7) | 1,273 | (16.9) | 1,520 | (20.2) | 4,349 | (57.8) |
| South Dakota [§] | 121 | (13.8) | 176 | (20.0) | 187 | (21.3) | 484 | (55.1) |
| Tennessee [§] | 2,885 | (16.5) | 3,784 | (21.6) | 3,987 | (22.8) | 10,656 | (61.0) |
| Texas [§] | 18,150 | (23.8) | 13,330 | (17.5) | 13,393 | (17.6) | 44,873 | (58.9) |
| Utah [§] | 1,117 | (31.8) | 610 | (17.4) | 534 | (15.2) | 2,261 | (64.4) |
| Vermont | 440 | (24.7) | 366 | (20.6) | 325 | (18.2) | 1,131 | (63.5) |
| Virginia [§] | 7,012 | (25.0) | 5,682 | (20.3) | 5,660 | (20.2) | 18,354 | (65.6) |
| Washington [§] | 5,088 | (19.8) | 5,070 | (19.7) | 4,467 | (17.4) | 14,625 | (56.9) |
| West Virginia ^{¶¶} | 251 | (9.8) | 396 | (15.5) | 432 | (16.9) | 1,079 | (42.3) |
| Wyoming ^{¶¶} | 2 | (33.3) | 2 | (33.3) | 1 | (16.7) | 5 | (83.3) |
| Total | 142,166 | (23.0) | 108,691 | (17.6) | 104,723 | (16.9) | 355,580 | (57.5) |

* Data from 39 states, the District of Columbia, and New York City; excludes two states where weeks of gestation was reported as unknown for >15% of women, and two states that were included in Table 6 but did not provide component weeks of gestation for abortions obtained at ≤ 8 weeks.

† Percentages might not add to total percentage obtained at ≤ 8 weeks because of rounding.

§ Weeks of gestation based on physicians' estimates.

¶ Weeks of gestation based on physicians' estimates only if date of last menstrual period was unknown or unreliable.

** Includes residents only.

†† Numbers obtained at ≤ 12 weeks of gestation redistributed.

§§ Weeks of gestation based on date of last menstrual period only if physicians' estimates were unknown.

¶¶ Weeks of gestation based on physicians' estimates only if date of last menstrual period was unknown.

TABLE 8. Reported legal abortions, by type of procedure and state of occurrence — selected states,* United States, 2000

| State | Procedure | | | | | | | | | | | | | | | |
|----------------|--|---------------|--------------------|--------------|------------------|---------------|------------------------------|--------------|--------------|--------------|--------------|--------------|--------------|--------------|----------------|----------------|
| | Suction curettage & dilation and evacuation | | Sharp curettage | | All curettage | | Intrauterine instillation | | Medical | | Other† | | Unknown | | Total | |
| | No. | (%) | No. | (%) | No. | (%)§ | No. | (%) | No. | (%) | No. | (%) | No. | (%) | No. | (%)§ |
| Alabama | 13,397 | (98.8) | 16 | (0.1) | 13,413 | (99.0) | 10 | (0.1) | ¶ | | 73 | (0.5)** | 57 | (0.4) | 13,553 | (100.0) |
| Arkansas | 5,317 | (96.7) | 178 | (3.2) | 5,495 | (99.9) | 0 | (0.0) | 4 | (0.1) | 2 | (0.0) | 0 | (0.0) | 5,501 | (100.0) |
| Colorado | 3,142 | (74.5) | 3 | (0.1) | 3,145 | (74.6) | 9 | (0.2) | †† | | 715 | (17.0) | 346 | (8.2) | 4,215 | (100.0) |
| Connecticut | 12,697 | (98.4) | 137 | (1.1) | 12,834 | (99.4) | 0 | (0.0) | †† | | 74 | (0.6) | 0 | (0.0) | 12,908 | (100.0) |
| Delaware§§ | 3,409 | (99.0) | 0 | (0.0) | 3,409 | (99.0) | 3 | (0.1) | 26 | (0.8) | 1 | (0.0) | 3 | (0.1) | 3,442 | (100.0) |
| Georgia | 31,545 | (99.6) | 21 | (0.1) | 31,566 | (99.6) | 33 | (0.1) | ¶ | | 76 | (0.2)** | 3 | (0.0) | 31,678 | (100.0) |
| Hawaii | 3,895 | (98.8) | 25 | (0.6) | 3,920 | (99.5) | 6 | (0.2) | †† | | 3 | (0.1) | 12 | (0.3) | 3,941 | (100.0) |
| Idaho | 787 | (98.3) | 1 | (0.1) | 788 | (98.4) | 4 | (0.5) | 8 | (1.0) | 1 | (0.1) | 0 | (0.0) | 801 | (100.0) |
| Indiana | 12,025 | (98.0) | 38 | (0.3) | 12,063 | (98.3) | 0 | (0.0) | †† | | 147 | (1.2) | 62 | (0.5) | 12,272 | (100.0) |
| Kansas | 11,188 | (91.5) | 5 | (0.0) | 11,193 | (91.6) | 0 | (0.0) | 404 | (3.3) | 628 | (5.1) | 0 | (0.0) | 12,225 | (100.0) |
| Kentucky | 4,609 | (99.5) | 2 | (0.0) | 4,611 | (99.6) | 0 | (0.0) | 1 | (0.0) | 1 | (0.0) | 17 | (0.4) | 4,630 | (100.0) |
| Louisiana | 10,335 | (90.8) | 4 | (0.0) | 10,339 | (90.8) | 0 | (0.0) | ¶ | | 18 | (0.1)** | 1,027 | (9.0) | 11,384 | (100.0) |
| Maine | 2,435 | (96.0) | 1 | (0.0) | 2,436 | (96.1) | 1 | (0.0) | 29 | (1.1) | 4 | (0.2) | 66 | (2.6) | 2,536 | (100.0) |
| Maryland§§ | 10,405 | (90.4) | 84 | (0.7) | 10,489 | (91.1) | 67 | (0.6) | †† | | 960 | (8.3) | 0 | (0.0) | 11,516 | (100.0) |
| Massachusetts | 26,205 | (96.4) | 144 | (0.5) | 26,349 | (96.9) | 629 | (2.3) | ¶ | | 202 | (0.7)** | 0 | (0.0) | 27,180 | (100.0) |
| Michigan | 25,037 | (93.4) | 1,174 | (4.4) | 26,211 | (97.8) | 48 | (0.2) | 388 | (1.4) | 24 | (0.1) | 136 | (0.5) | 26,807 | (100.0) |
| Minnesota | 14,370 | (99.3) | 7 | (0.0) | 14,377 | (99.4) | 2 | (0.0) | 60 | (0.4) | 28 | (0.2) | 1 | (0.0) | 14,468 | (100.0) |
| Mississippi | 3,721 | (99.0) | 1 | (0.0) | 3,722 | (99.0) | 14 | (0.4) | 21 | (0.6) | 1 | (0.0) | 0 | (0.0) | 3,758 | (100.0) |
| Missouri | 7,844 | (99.5) | 5 | (0.1) | 7,849 | (99.6) | 0 | (0.0) | 12 | (0.2) | 17 | (0.2) | 6 | (0.1) | 7,884 | (100.0) |
| Montana | 2,436 | (99.8) | 1 | (0.0) | 2,437 | (99.8) | 0 | (0.0) | 3 | (0.1) | 0 | (0.0) | 1 | (0.0) | 2,441 | (100.0) |
| Nebraska | 4,124 | (98.7) | 1 | (0.0) | 4,125 | (98.7) | 0 | (0.0) | 51 | (1.2) | 2 | (0.0) | 0 | (0.0) | 4,178 | (100.0) |
| Nevada | 5,277 | (88.4) | 2 | (0.0) | 5,279 | (88.4) | 678 | (11.4) | †† | | 1 | (0.0) | 14 | (0.2) | 5,972 | (100.0) |
| New Jersey¶¶ | 32,306 | (97.8) | 464 | (1.4) | 32,770 | (99.2) | 111 | (0.3) | 58 | (0.2) | 17 | (0.1) | 70 | (0.2) | 33,026 | (100.0) |
| New Mexico | 3,976 | (72.8) | 1,303 | (23.8) | 5,279 | (96.6) | 0 | (0.0) | 176 | (3.2) | 9 | (0.2) | 1 | (0.0) | 5,465 | (100.0) |
| New York | 117,269 | (90.4) | 8,633 | (6.7) | 125,902 | (97.1) | 557 | (0.4) | 1,185 | (0.9) | 349 | (0.3) | 1,685 | (1.3) | 129,678 | (100.0) |
| City | 86,492 | (91.6) | 5,904 | (6.2) | 92,396 | (97.8) | 438 | (0.5) | 698 | (0.7) | 48 | (0.0) | 886 | (0.9) | 94,466 | (100.0) |
| State | 30,777 | (87.4) | 2,729 | (7.8) | 33,506 | (95.2) | 119 | (0.3) | 487 | (1.4) | 301 | (0.9) | 799 | (2.3) | 35,212 | (100.0) |
| North Carolina | 29,869 | (99.0) | 15 | (0.0) | 29,884 | (99.1) | 76 | (0.3) | 157 | (0.5) | 40 | (0.1) | 0 | (0.0) | 30,157 | (100.0) |
| North Dakota | 1,330 | (99.2) | 0 | (0.0) | 1,330 | (99.2) | 0 | (0.0) | 0 | (0.0) | 0 | (0.0) | 11 | (0.8) | 1,341 | (100.0) |
| Ohio | 37,752 | (95.7) | 766 | (1.9) | 38,518 | (97.6) | 39 | (0.1) | 136 | (0.3) | 569 | (1.4) | 204 | (0.5) | 39,466*** | (100.0) |
| Oklahoma | 7,138 | (99.4) | 2 | (0.0) | 7,140 | (99.4) | 0 | (0.0) | 0 | (0.0) | 0 | (0.0) | 42 | (0.6) | 7,182 | (100.0) |
| Oregon | 13,902 | (97.9) | 10 | (0.1) | 13,912 | (98.0) | 18 | (0.1) | 250 | (1.8) | 10 | (0.1) | 4 | (0.0) | 14,194 | (100.0) |
| Pennsylvania | 34,089 | (95.7) | 7 | (0.0) | 34,096 | (95.7) | 162 | (0.5) | 1,132 | (3.2) | 240 | (0.7) | 0 | (0.0) | 35,630 | (100.0) |
| Rhode Island | 5,388 | (99.5) | 8 | (0.1) | 5,396 | (99.7) | 10 | (0.2) | 0 | (0.0) | 6 | (0.1) | 1 | (0.0) | 5,413 | (100.0) |
| South Carolina | 7,450 | (99.0) | 3 | (0.0) | 7,453 | (99.0) | 10 | (0.1) | 9 | (0.1) | 55 | (0.7) | 0 | (0.0) | 7,527 | (100.0) |
| South Dakota | 25 | (2.8) | 840 | (95.7) | 865 | (98.5) | 0 | (0.0) | 13 | (1.5) | 0 | (0.0) | 0 | (0.0) | 878 | (100.0) |
| Tennessee | 17,386 | (99.5) | 4 | (0.0) | 17,390 | (99.5) | 4 | (0.0) | 3 | (0.0) | 74 | (0.4) | 8 | (0.0) | 17,479 | (100.0) |
| Texas | 74,847 | (98.3) | 67 | (0.1) | 74,914 | (98.4) | 13 | (0.0) | 975 | (1.3) | 52 | (0.1) | 167 | (0.2) | 76,121 | (100.0) |
| Utah | 3,398 | (96.8) | 3 | (0.1) | 3,401 | (96.9) | 0 | (0.0) | 108 | (3.1) | 0 | (0.0) | 0 | (0.0) | 3,509 | (100.0) |
| Vermont | 1,682 | (94.4) | 0 | (0.0) | 1,682 | (94.4) | 1 | (0.1) | 96 | (5.4) | 1 | (0.1) | 1 | (0.1) | 1,781 | (100.0) |
| Virginia | 24,926 | (89.0) | 1,947 | (7.0) | 26,873 | (96.0) | 14 | (0.1) | 954 | (3.4) | 79 | (0.3) | 79 | (0.3) | 27,999 | (100.0) |
| Washington | 24,998 | (97.3) | 24 | (0.1) | 25,022 | (97.4) | 19 | (0.1) | 636 | (2.5) | 10 | (0.0) | 5 | (0.0) | 25,692 | (100.0) |
| Wyoming | 6 | (100.0) | 0 | (0.0) | 6 | (100.0) | 0 | (0.0) | 0 | (0.0) | 0 | (0.0) | 0 | (0.0) | 6 | (100.0) |
| Total | 651,937 | (95.1) | 15,946 | (2.3) | 667,883 | (97.4) | 2,538 | (0.4) | 6,895 | (1.0) | 4,489 | (0.7) | 4,029 | (0.6) | 685,834 | (100.0) |

* Data from 41 states and New York City; excludes two reporting areas where type of procedure was reported as unknown or multiple types for >15% of women.

† Includes hysterotomy/hysterectomy and procedures reported as "other."

§ Percentages might not add to total because of rounding.

¶ Medical procedures included with "other."

** Includes medical (nonsurgical) procedures; no separate numbers provided.

†† Reporting area does not list medical abortions as a separate category on reporting form; unknown whether any medical procedures are included in the "other" category.

§§ Includes residents only.

¶¶ Numbers do not include private physicians' procedures.

*** Does not add to total abortions reported because of some reported combination procedures.

TABLE 9. Reported legal abortions, by race of women who obtained on abortion and state of occurrence — selected states,* United States, 2000

| State | Race | | | | | | | | | |
|-------------------|----------------|---------------|----------------|---------------|---------------|--------------|---------------|--------------|----------------|----------------|
| | White | | Black | | Other | | Unknown | | Total | |
| | No. | (%) | No. | (%) | No. | (%) | No. | (%) | No. | (%)† |
| Alabama | 6,407 | (47.3) | 6,880 | (50.8) | 207 | (1.5) | 59 | (0.4) | 13,553 | (100.0) |
| Arizona | 7,967 | (79.2) | 541 | (5.4) | 524 | (5.2) | 1,032 | (10.3) | 10,064 | (100.0) |
| Arkansas | 3,203 | (58.2) | 2,108 | (38.3) | 111 | (2.0) | 79 | (1.4) | 5,501 | (100.0) |
| Colorado | 3,322 | (78.8) | 175 | (4.2) | 223 | (5.3) | 495 | (11.7) | 4,215 | (100.0) |
| Delaware§ | 1,864 | (54.2) | 1,473 | (42.8) | 105 | (3.1) | 0 | (0.0) | 3,442 | (100.0) |
| Dist. of Columbia | 610 | (9.2) | 5,239 | (78.7) | 526 | (7.9) | 284 | (4.3) | 6,659 | (100.0) |
| Georgia | 13,163 | (41.6) | 17,226 | (54.4) | 1,289 | (4.1) | 0 | (0.0) | 31,678 | (100.0) |
| Hawaii | 964 | (24.5) | 131 | (3.3) | 2,375 | (60.3) | 471 | (12.0) | 3,941 | (100.0) |
| Idaho | 751 | (93.8) | 8 | (1.0) | 33 | (4.1) | 9 | (1.1) | 801 | (100.0) |
| Indiana | 7,488 | (61.0) | 3,180 | (25.9) | 295 | (2.4) | 1,309 | (10.7) | 12,272 | (100.0) |
| Iowa§ | 4,659 | (81.1) | 389 | (6.8) | 645 | (11.2) | 54 | (0.9) | 5,747 | (100.0) |
| Kansas | 8,889 | (72.7) | 2,734 | (22.4) | 590 | (4.8) | 12 | (0.1) | 12,225 | (100.0) |
| Kentucky | 3,278 | (70.8) | 986 | (21.3) | 304 | (6.6) | 62 | (1.3) | 4,630 | (100.0) |
| Louisiana | 4,514 | (39.7) | 5,927 | (52.1) | 182 | (1.6) | 761 | (6.7) | 11,384 | (100.0) |
| Maine | 2,338 | (92.2) | 37 | (1.5) | 103 | (4.1) | 58 | (2.3) | 2,536 | (100.0) |
| Maryland§ | 3,778 | (32.8) | 6,613 | (57.4) | 802 | (7.0) | 323 | (2.8) | 11,516 | (100.0) |
| Massachusetts | 15,519 | (57.1) | 4,959 | (18.2) | 3,238 | (11.9) | 3,464 | (12.7) | 27,180 | (100.0) |
| Minnesota | 9,506 | (65.7) | 2,659 | (18.4) | 1,951 | (13.5) | 352 | (2.4) | 14,468 | (100.0) |
| Mississippi | 1,039 | (27.6) | 2,676 | (71.2) | 35 | (0.9) | 8 | (0.2) | 3,758 | (100.0) |
| Missouri | 4,535 | (57.5) | 2,983 | (37.8) | 322 | (4.1) | 44 | (0.6) | 7,884 | (100.0) |
| Montana | 2,146 | (87.9) | 6 | (0.2) | 229 | (9.4) | 60 | (2.5) | 2,441 | (100.0) |
| New Jersey | 11,040 | (33.4) | 14,655 | (44.4) | 6,641 | (20.1) | 690 | (2.1) | 33,026 | (100.0) |
| New Mexico | 4,547 | (83.2) | 182 | (3.3) | 736 | (13.5) | 0 | (0.0) | 5,465 | (100.0) |
| New York City | 39,750 | (42.1) | 46,595 | (49.3) | 5,503 | (5.8) | 2,618 | (2.8) | 94,466 | (100.0) |
| North Carolina | 13,603 | (45.1) | 13,006 | (43.1) | 2,872 | (9.5) | 676 | (2.2) | 30,157 | (100.0) |
| North Dakota | 1,184 | (88.3) | 19 | (1.4) | 133 | (9.9) | 5 | (0.4) | 1,341 | (100.0) |
| Ohio | 22,581 | (59.2) | 13,480 | (35.3) | 852 | (2.2) | 1,227 | (3.2) | 38,140 | (100.0) |
| Oklahoma | 4,922 | (68.5) | 1,216 | (16.9) | 982 | (13.7) | 62 | (0.9) | 7,182 | (100.0) |
| Oregon | 11,944 | (84.1) | 914 | (6.4) | 1,306 | (9.2) | 30 | (0.2) | 14,194 | (100.0) |
| Pennsylvania | 18,852 | (52.9) | 15,477 | (43.4) | 1,231 | (3.5) | 70 | (0.2) | 35,630 | (100.0) |
| Rhode Island | 4,201 | (77.6) | 797 | (14.7) | 314 | (5.8) | 101 | (1.9) | 5,413 | (100.0) |
| South Carolina | 4,061 | (54.0) | 3,271 | (43.5) | 195 | (2.6) | 0 | (0.0) | 7,527 | (100.0) |
| South Dakota | 724 | (82.5) | 29 | (3.3) | 120 | (13.7) | 5 | (0.6) | 878 | (100.0) |
| Tennessee | 9,234 | (52.8) | 7,568 | (43.3) | 605 | (3.5) | 72 | (0.4) | 17,479 | (100.0) |
| Texas | 53,659 | (70.5) | 16,087 | (21.1) | 3,342 | (4.4) | 3,033 | (4.0) | 76,121 | (100.0) |
| Utah | 2,836 | (80.8) | 76 | (2.2) | 326 | (9.3) | 271 | (7.7) | 3,509 | (100.0) |
| Vermont | 1,701 | (95.5) | 29 | (1.6) | 49 | (2.8) | 2 | (0.1) | 1,781 | (100.0) |
| Virginia | 13,763 | (49.2) | 10,971 | (39.2) | 2,330 | (8.3) | 935 | (3.3) | 27,999 | (100.0) |
| West Virginia | 2,260 | (88.7) | 241 | (9.5) | 43 | (1.7) | 5 | (0.2) | 2,549 | (100.0) |
| Wisconsin§ | 7,372 | (68.7) | 2,669 | (24.9) | 0 | (0.0) | 688 | (6.4) | 10,729 | (100.0) |
| Wyoming | 6 | (100.0) | 0 | (0.0) | 0 | (0.0) | 0 | (0.0) | 6 | (100.0) |
| Total | 334,180 | (54.8) | 214,212 | (35.1) | 41,669 | (6.8) | 19,426 | (3.2) | 609,487 | (100.0) |
| Abortion ratio¶ | 167 | | 503 | | 329 | | | | 230 | |
| Abortion rate** | 10 | | 30 | | 22 | | | | 13 | |

* Data from 39 states, the District of Columbia, and New York City; excludes four areas where race was reported as unknown for >15% of women.

† Percentages might not add to 100.0 because of rounding.

§ Includes residents only.

¶ Calculated as the number of legal abortions obtained by women of a given race per 1,000 live births to women of the same race for these states. For each state, data for women of unknown race were distributed according to the known racial distribution for that state.

** Calculated as the number of legal abortions obtained by women of a given race per 1,000 women aged 15–44 years of the same race for these states. For each state, data for women of unknown race were distributed according to the known racial distribution for that state.

TABLE 10. Reported legal abortions, by ethnicity of women who obtained an abortion and state of occurrence — selected states,* United States, 2000

| State | Ethnicity | | | | | | Total | |
|-------------------|---------------|---------------|----------------|---------------|---------------|--------------|----------------|----------------|
| | Hispanic | | Non-Hispanic | | Unknown | | No. | (%)† |
| | No. | (%) | No. | (%) | No. | (%) | | |
| Alabama | 190 | (1.4) | 13,287 | (98.0) | 76 | (0.6) | 13,553 | (100.0) |
| Arizona | 3,066 | (30.5) | 5,966 | (59.3) | 1,032 | (10.3) | 10,064 | (100.0) |
| Arkansas | 182 | (3.3) | 5,155 | (93.7) | 164 | (3.0) | 5,501 | (100.0) |
| Colorado | 651 | (15.4) | 2,979 | (70.7) | 585 | (13.9) | 4,215 | (100.0) |
| Delaware§ | 224 | (6.5) | 3,214 | (93.4) | 4 | (0.1) | 3,442 | (100.0) |
| Dist. of Columbia | 715 | (10.7) | 5,929 | (89.0) | 15 | (0.2) | 6,659 | (100.0) |
| Georgia | 1,378 | (4.4) | 29,172 | (92.1) | 1,128 | (3.6) | 31,678 | (100.0) |
| Idaho | 87 | (10.9) | 709 | (88.5) | 5 | (0.6) | 801 | (100.0) |
| Indiana | 646 | (5.3) | 9,834 | (80.1) | 1,792 | (14.6) | 12,272 | (100.0) |
| Kansas | 958 | (7.8) | 11,142 | (91.1) | 125 | (1.0) | 12,225 | (100.0) |
| Kentucky | 2 | (0.0) | 4,566 | (98.6) | 62 | (1.3) | 4,630 | (100.0) |
| Maine | 29 | (1.1) | 2,153 | (84.9) | 354 | (14.0) | 2,536 | (100.0) |
| Massachusetts | 2,655 | (9.8) | 21,061 | (77.5) | 3,464 | (12.7) | 27,180 | (100.0) |
| Minnesota | 746 | (5.2) | 13,570 | (93.8) | 152 | (1.1) | 14,468 | (100.0) |
| Mississippi | 14 | (0.4) | 3,736 | (99.4) | 8 | (0.2) | 3,758 | (100.0) |
| Missouri | 147 | (1.9) | 7,652 | (97.1) | 85 | (1.1) | 7,884 | (100.0) |
| New Jersey | 6,305 | (19.1) | 26,325 | (79.7) | 396 | (1.2) | 33,026 | (100.0) |
| New Mexico | 2,509 | (45.9) | 2,956 | (54.1) | 0 | (0.0) | 5,465 | (100.0) |
| New York City | 31,118 | (32.9) | 60,993 | (64.6) | 2,355 | (2.5) | 94,466 | (100.0) |
| Ohio | 943 | (2.5) | 37,112 | (97.3) | 85 | (0.2) | 38,140 | (100.0) |
| Oklahoma | 386 | (5.4) | 6,394 | (89.0) | 402 | (5.6) | 7,182 | (100.0) |
| Oregon | 1,337 | (9.4) | 12,837 | (90.4) | 20 | (0.1) | 14,194 | (100.0) |
| Pennsylvania | 1,577 | (4.4) | 34,028 | (95.5) | 25 | (0.1) | 35,630 | (100.0) |
| South Carolina | 192 | (2.6) | 7,335 | (97.4) | 0 | (0.0) | 7,527 | (100.0) |
| South Dakota | 40 | (4.6) | 838 | (95.4) | 0 | (0.0) | 878 | (100.0) |
| Tennessee | 425 | (2.4) | 17,044 | (97.5) | 10 | (0.1) | 17,479 | (100.0) |
| Texas | 26,540 | (34.9) | 46,548 | (61.2) | 3,033 | (4.0) | 76,121 | (100.0) |
| Utah | 540 | (15.4) | 2,926 | (83.4) | 43 | (1.2) | 3,509 | (100.0) |
| Vermont | 21 | (1.2) | 1,753 | (98.4) | 7 | (0.4) | 1,781 | (100.0) |
| Wisconsin§ | 719 | (6.7) | 10,008 | (93.3) | 2 | (0.0) | 10,729 | (100.0) |
| Wyoming | 1 | (16.7) | 5 | (83.3) | 0 | (0.0) | 6 | (100.0) |
| Total | 84,343 | (16.6) | 407,227 | (80.3) | 15,429 | (3.0) | 506,999 | (100.0) |
| Abortion ratio¶ | 225 | | 233 | | | | 231 | |
| Abortion rate** | 16 | | 13 | | | | 13 | |

* Data from 29 states, the District of Columbia, and New York City; excludes 10 states where ethnicity was reported as unknown for >15% of women.

† Percentages might not add to 100.0 because of rounding.

§ Includes residents only.

¶ Calculated as the number of legal abortions obtained by women of a given ethnicity per 1,000 live births to women of the same ethnicity for these states. For each state, data for women of unknown ethnicity were distributed according to the known ethnicity distribution for that state.

** Calculated as the number of legal abortions obtained by women of a given ethnicity per 1,000 women of the same ethnicity for these states. For each state, data for women of unknown ethnicity were distributed according to the known ethnicity distribution for that state. Rates exclude New York City because population data were not available separately from New York State.

TABLE 11. Reported legal abortions, by marital status of women who obtained an abortion and state of occurrence — selected states,* United States, 2000

| State | Marital Status | | | | | | Total | |
|------------------|----------------|---------------|----------------|---------------|---------------|--------------|----------------|----------------|
| | Married† | | Unmarried§ | | Unknown | | | |
| | No. | (%) | No. | (%) | No. | (%) | No. | (%)¶ |
| Alabama | 1,936 | (14.3) | 10,782 | (79.6) | 835 | (6.2) | 13,553 | (100.0) |
| Arkansas | 921 | (16.7) | 4,347 | (79.0) | 233 | (4.2) | 5,501 | (100.0) |
| Colorado | 931 | (22.1) | 3,237 | (76.8) | 47 | (1.1) | 4,215 | (100.0) |
| Delaware** | 552 | (16.0) | 2,890 | (84.0) | 0 | (0.0) | 3,442 | (100.0) |
| Georgia | 5,568 | (17.6) | 25,570 | (80.7) | 540 | (1.7) | 31,678 | (100.0) |
| Hawaii | 702 | (17.8) | 3,215 | (81.6) | 24 | (0.6) | 3,941 | (100.0) |
| Idaho | 168 | (21.0) | 632 | (78.9) | 1 | (0.1) | 801 | (100.0) |
| Illinois†† | 7,035 | (15.3) | 37,201 | (81.1) | 1,648 | (3.6) | 45,884 | (100.0) |
| Indiana | 1,618 | (13.2) | 8,926 | (72.7) | 1,728 | (14.1) | 12,272 | (100.0) |
| Iowa** | 1,228 | (21.4) | 4,469 | (77.8) | 50 | (0.9) | 5,747 | (100.0) |
| Kansas | 2,417 | (19.8) | 9,789 | (80.1) | 19 | (0.2) | 12,225 | (100.0) |
| Kentucky | 757 | (16.3) | 3,873 | (83.7) | 0 | (0.0) | 4,630 | (100.0) |
| Maryland** | 1,880 | (16.3) | 8,833 | (76.7) | 803 | (7.0) | 11,516 | (100.0) |
| Massachusetts | 6,746 | (24.8) | 18,406 | (67.7) | 2,028 | (7.5) | 27,180 | (100.0) |
| Michigan | 4,056 | (15.1) | 22,435 | (83.7) | 316 | (1.2) | 26,807 | (100.0) |
| Minnesota | 2,929 | (20.2) | 10,807 | (74.7) | 732 | (5.1) | 14,468 | (100.0) |
| Mississippi | 476 | (12.7) | 3,228 | (85.9) | 54 | (1.4) | 3,758 | (100.0) |
| Missouri | 1,619 | (20.5) | 6,168 | (78.2) | 97 | (1.2) | 7,884 | (100.0) |
| Montana | 365 | (15.0) | 1,825 | (74.8) | 251 | (10.3) | 2,441 | (100.0) |
| Nevada | 1,217 | (20.4) | 4,106 | (68.8) | 649 | (10.9) | 5,972 | (100.0) |
| New Jersey | 5,557 | (16.8) | 27,155 | (82.2) | 314 | (1.0) | 33,026 | (100.0) |
| New Mexico | 939 | (17.2) | 4,448 | (81.4) | 78 | (1.4) | 5,465 | (100.0) |
| New York City | 15,449 | (16.4) | 76,534 | (81.0) | 2,483 | (2.6) | 94,466 | (100.0) |
| North Carolina | 6,522 | (21.6) | 21,888 | (72.6) | 1,747 | (5.8) | 30,157 | (100.0) |
| North Dakota | 230 | (17.2) | 1,107 | (82.6) | 4 | (0.3) | 1,341 | (100.0) |
| Ohio | 6,619 | (17.4) | 30,886 | (81.0) | 635 | (1.7) | 38,140 | (100.0) |
| Oklahoma | 1,367 | (19.0) | 5,616 | (78.2) | 199 | (2.8) | 7,182 | (100.0) |
| Oregon | 3,184 | (22.4) | 10,701 | (75.4) | 309 | (2.2) | 14,194 | (100.0) |
| Pennsylvania | 5,790 | (16.3) | 29,821 | (83.7) | 19 | (0.1) | 35,630 | (100.0) |
| South Carolina | 1,250 | (16.6) | 6,276 | (83.4) | 1 | (0.0) | 7,527 | (100.0) |
| South Dakota | 171 | (19.5) | 707 | (80.5) | 0 | (0.0) | 878 | (100.0) |
| Tennessee | 3,303 | (18.9) | 14,167 | (81.1) | 9 | (0.1) | 17,479 | (100.0) |
| Texas | 16,030 | (21.1) | 56,986 | (74.9) | 3,105 | (4.1) | 76,121 | (100.0) |
| Utah | 865 | (24.7) | 2,633 | (75.0) | 11 | (0.3) | 3,509 | (100.0) |
| Vermont | 362 | (20.3) | 1,358 | (76.2) | 61 | (3.4) | 1,781 | (100.0) |
| Virginia | 4,753 | (17.0) | 19,830 | (70.8) | 3,416 | (12.2) | 27,999 | (100.0) |
| West Virginia | 473 | (18.6) | 2,068 | (81.1) | 8 | (0.3) | 2,549 | (100.0) |
| Wisconsin** | 1,919 | (17.9) | 8,791 | (81.9) | 19 | (0.2) | 10,729 | (100.0) |
| Wyoming | 0 | (0.0) | 6 | (100.0) | 0 | (0.0) | 6 | (100.0) |
| Total | 117,904 | (18.1) | 511,717 | (78.5) | 22,473 | (3.4) | 652,094 | (100.0) |
| Abortion ratio§§ | 65 | | 570 | | | | 231 | |

* Data from 38 states and New York City; excludes six areas where marital status was reported as unknown for >15% of women.

† Includes married and separated.

§ Includes never married, divorced, and widowed.

¶ Percentages might not add to 100.0 because of rounding.

** Includes residents only.

†† Unpublished small numbers distributed as the known numbers using data from public use tape.

§§ Calculated as the number of legal abortions obtained by women of a given marital status per 1,000 live births to women of the same marital status for these states. For each state, data for women of unknown marital status were distributed according to the known marital status distribution for that state.

TABLE 12. Reported legal abortions, by number of previous live births and state of occurrence — selected states,* United States, 2000

| State | No. previous live births | | | | | | | | | | Total | | | |
|---------------------------|--------------------------|---------------|----------------|---------------|----------------|---------------|---------------|--------------|---------------|--------------|---------------|------------------|----------------|----------------|
| | 0 | | 1 | | 2 | | 3 | | ≥4 | | | | Unknown | |
| | No. | (%) | No. | (%) | No. | (%) | No. | (%) | No. | (%) | No. | (%) [†] | | |
| Alabama | 5,531 | (40.8) | 4,110 | (30.3) | 2,636 | (19.4) | 903 | (6.7) | 352 | (2.6) | 21 | (0.2) | 13,553 | (100.0) |
| Arkansas | 1,452 | (26.4) | 1,648 | (30.0) | 1,113 | (20.2) | 391 | (7.1) | 176 | (3.2) | 721 | (13.1) | 5,501 | (100.0) |
| Colorado | 2,005 | (47.6) | 878 | (20.8) | 681 | (16.2) | 231 | (5.5) | 122 | (2.9) | 298 | (7.1) | 4,215 | (100.0) |
| Delaware [§] | 1,371 | (39.8) | 1,018 | (29.6) | 670 | (19.5) | 240 | (7.0) | 140 | (4.1) | 3 | (0.1) | 3,442 | (100.0) |
| Georgia | 13,262 | (41.9) | 9,001 | (28.4) | 5,986 | (18.9) | 2,269 | (7.2) | 1,124 | (3.5) | 36 | (0.1) | 31,678 | (100.0) |
| Hawaii | 2,103 | (53.4) | 805 | (20.4) | 568 | (14.4) | 252 | (6.4) | 139 | (3.5) | 74 | (1.9) | 3,941 | (100.0) |
| Idaho | 377 | (47.1) | 179 | (22.3) | 140 | (17.5) | 76 | (9.5) | 29 | (3.6) | 0 | (0.0) | 801 | (100.0) |
| Indiana [¶] | 4,154 | (33.8) | 3,293 | (26.8) | 2,498 | (20.4) | 1,069 | (8.7) | 628 | (5.1) | 630 | (5.1) | 12,272 | (100.0) |
| Iowa [§] | 2,671 | (46.5) | 1,317 | (22.9) | 1,095 | (19.1) | 407 | (7.1) | 200 | (3.5) | 57 | (1.0) | 5,747 | (100.0) |
| Kansas | 5,185 | (42.4) | 3,136 | (25.7) | 2,391 | (19.6) | 990 | (8.1) | 523 | (4.3) | 0 | (0.0) | 12,225 | (100.0) |
| Kentucky | 1,835 | (39.6) | 1,471 | (31.8) | 919 | (19.8) | 305 | (6.6) | 100 | (2.2) | 0 | (0.0) | 4,630 | (100.0) |
| Louisiana | 4,615 | (40.5) | 3,047 | (26.8) | 1,998 | (17.6) | 747 | (6.6) | 340 | (3.0) | 637 | (5.6) | 11,384 | (100.0) |
| Maine | 1,295 | (51.1) | 554 | (21.8) | 463 | (18.3) | 130 | (5.1) | 50 | (2.0) | 44 | (1.7) | 2,536 | (100.0) |
| Maryland ^{§¶} | 4,428 | (38.5) | 3,482 | (30.2) | 2,388 | (20.7) | 810 | (7.0) | 408 | (3.5) | 0 | (0.0) | 11,516 | (100.0) |
| Michigan | 10,808 | (40.3) | 7,244 | (27.0) | 5,493 | (20.5) | 2,185 | (8.2) | 1,037 | (3.9) | 40 | (0.1) | 26,807 | (100.0) |
| Minnesota | 6,129 | (42.4) | 3,482 | (24.1) | 2,732 | (18.9) | 1,119 | (7.7) | 937 | (6.5) | 69 | (0.5) | 14,468 | (100.0) |
| Mississippi | 1,346 | (35.8) | 1,203 | (32.0) | 782 | (20.8) | 286 | (7.6) | 135 | (3.6) | 6 | (0.2) | 3,758 | (100.0) |
| Missouri | 2,908 | (36.9) | 2,211 | (28.0) | 1,651 | (20.9) | 708 | (9.0) | 405 | (5.1) | 1 | (0.0) | 7,884 | (100.0) |
| Montana | 1,214 | (49.7) | 573 | (23.5) | 388 | (15.9) | 174 | (7.1) | 90 | (3.7) | 2 | (0.1) | 2,441 | (100.0) |
| Nebraska | 1,822 | (43.6) | 996 | (23.8) | 837 | (20.0) | 347 | (8.3) | 176 | (4.2) | 0 | (0.0) | 4,178 | (100.0) |
| Nevada | 2,239 | (37.5) | 1,628 | (27.3) | 1,278 | (21.4) | 509 | (8.5) | 261 | (4.4) | 57 | (1.0) | 5,972 | (100.0) |
| New Jersey | 12,288 | (37.2) | 9,482 | (28.7) | 6,496 | (19.7) | 2,458 | (7.4) | 1,320 | (4.0) | 982 | (3.0) | 33,026 | (100.0) |
| New Mexico | 2,115 | (38.7) | 1,480 | (27.1) | 1,045 | (19.1) | 468 | (8.6) | 357 | (6.5) | 0 | (0.0) | 5,465 | (100.0) |
| New York City | 35,023 | (37.1) | 25,616 | (27.1) | 19,547 | (20.7) | 8,283 | (8.8) | 5,132 | (5.4) | 865 | (0.9) | 94,466 | (100.0) |
| North Carolina | 10,914 | (36.2) | 6,930 | (23.0) | 4,805 | (15.9) | 1,875 | (6.2) | 1,189 | (3.9) | 4,444 | (14.7) | 30,157 | (100.0) |
| North Dakota | 593 | (44.2) | 322 | (24.0) | 265 | (19.8) | 109 | (8.1) | 51 | (3.8) | 1 | (0.1) | 1,341 | (100.0) |
| Ohio | 11,103 | (29.1) | 11,006 | (28.9) | 8,025 | (21.0) | 3,128 | (8.2) | 1,526 | (4.0) | 3,352 | (8.8) | 38,140 | (100.0) |
| Oklahoma [¶] | 2,899 | (40.4) | 1,983 | (27.6) | 1,444 | (20.1) | 589 | (8.2) | 241 | (3.4) | 26 | (0.4) | 7,182 | (100.0) |
| Oregon | 6,271 | (44.2) | 3,616 | (25.5) | 2,657 | (18.7) | 1,033 | (7.3) | 563 | (4.0) | 54 | (0.4) | 14,194 | (100.0) |
| Pennsylvania | 14,175 | (39.8) | 9,999 | (28.1) | 7,030 | (19.7) | 2,852 | (8.0) | 1,555 | (4.4) | 19 | (0.1) | 35,630 | (100.0) |
| Rhode Island [¶] | 2,270 | (41.9) | 1,458 | (26.9) | 1,087 | (20.1) | 384 | (7.1) | 206 | (3.8) | 8 | (0.1) | 5,413 | (100.0) |
| South Carolina | 3,207 | (42.6) | 2,192 | (29.1) | 1,489 | (19.8) | 453 | (6.0) | 185 | (2.5) | 1 | (0.0) | 7,527 | (100.0) |
| South Dakota [¶] | 394 | (44.9) | 205 | (23.3) | 167 | (19.0) | 69 | (7.9) | 42 | (4.8) | 1 | (0.1) | 878 | (100.0) |
| Tennessee | 6,354 | (36.4) | 5,561 | (31.8) | 3,623 | (20.7) | 1,288 | (7.4) | 635 | (3.6) | 18 | (0.1) | 17,479 | (100.0) |
| Texas | 31,113 | (40.9) | 20,511 | (26.9) | 15,327 | (20.1) | 5,948 | (7.8) | 2,992 | (3.9) | 230 | (0.3) | 76,121 | (100.0) |
| Utah | 1,475 | (42.0) | 892 | (25.4) | 695 | (19.8) | 298 | (8.5) | 143 | (4.1) | 6 | (0.2) | 3,509 | (100.0) |
| Vermont | 973 | (54.6) | 370 | (20.8) | 284 | (15.9) | 108 | (6.1) | 42 | (2.4) | 4 | (0.2) | 1,781 | (100.0) |
| Washington | 11,765 | (45.8) | 6,313 | (24.6) | 4,804 | (18.7) | 1,901 | (7.4) | 830 | (3.2) | 79 | (0.3) | 25,692 | (100.0) |
| West Virginia | 930 | (36.5) | 766 | (30.1) | 500 | (19.6) | 222 | (8.7) | 131 | (5.1) | 0 | (0.0) | 2,549 | (100.0) |
| Wyoming | 5 | (83.3) | 0 | (0.0) | 0 | (0.0) | 1 | (16.7) | 0 | (0.0) | 0 | (0.0) | 6 | (100.0) |
| Total | 230,617 | (39.1) | 159,978 | (27.1) | 115,997 | (19.7) | 45,615 | (7.7) | 24,512 | (4.2) | 12,786 | (2.2) | 589,505 | (100.0) |
| Ratio** | 226 | | 194 | | 274 | | 285 | | 237 | | | | 228 | |

* Data from 39 states and New York City; excludes four states where number of previous live births was reported as unknown for >15% of women.

† Percentages might not add to 100.0 because of rounding.

§ Includes residents only.

¶ Indicates number of living children.

** Calculated as the number of legal abortions obtained by women with a given number of previous live births per 1,000 live births to women with the same number of previous live births for these states. For each state, data for women whose number of previous live births was unknown were distributed according to the known number of previous live births for that state.

TABLE 13. Reported legal abortions, by number of previous legal induced abortions and state of occurrence — selected states,* United States, 2000

| State | No. previous induced abortions | | | | | | | | | | | |
|----------------|--------------------------------|---------------|----------------|---------------|---------------|---------------|---------------|--------------|---------------|--------------|----------------|----------------|
| | 0 | | 1 | | 2 | | ≥3 | | Unknown | | Total | |
| | No. | (%) | No. | (%) | No. | (%) | No. | (%) | No. | (%) | No. | (%)† |
| Alabama | 8,920 | (65.8) | 3,246 | (24.0) | 978 | (7.2) | 386 | (2.8) | 23 | (0.2) | 13,553 | (100.0) |
| Colorado | 2,483 | (58.9) | 1,121 | (26.6) | 292 | (6.9) | 94 | (2.2) | 225 | (5.3) | 4,215 | (100.0) |
| Delaware§ | 1,933 | (56.2) | 953 | (27.7) | 369 | (10.7) | 183 | (5.3) | 4 | (0.1) | 3,442 | (100.0) |
| Georgia | 18,420 | (58.1) | 8,726 | (27.5) | 2,913 | (9.2) | 1,459 | (4.6) | 160 | (0.5) | 31,678 | (100.0) |
| Hawaii | 2,077 | (52.7) | 1,041 | (26.4) | 438 | (11.1) | 316 | (8.0) | 69 | (1.8) | 3,941 | (100.0) |
| Idaho | 637 | (79.5) | 117 | (14.6) | 33 | (4.1) | 13 | (1.6) | 1 | (0.1) | 801 | (100.0) |
| Indiana | 7,031 | (57.3) | 3,186 | (26.0) | 1,027 | (8.4) | 527 | (4.3) | 501 | (4.1) | 12,272 | (100.0) |
| Iowa§ | 3,719 | (64.7) | 1,399 | (24.3) | 410 | (7.1) | 187 | (3.3) | 32 | (0.6) | 5,747 | (100.0) |
| Kansas | 7,653 | (62.6) | 3,082 | (25.2) | 976 | (8.0) | 514 | (4.2) | 0 | (0.0) | 12,225 | (100.0) |
| Kentucky | 2,636 | (56.9) | 1,193 | (25.8) | 482 | (10.4) | 319 | (6.9) | 0 | (0.0) | 4,630 | (100.0) |
| Maine | 1,296 | (51.1) | 1,050 | (41.4) | 105 | (4.1) | 39 | (1.5) | 46 | (1.8) | 2,536 | (100.0) |
| Maryland§ | 3,008 | (26.1) | 4,056 | (35.2) | 2,531 | (22.0) | 1,921 | (16.7) | 0 | (0.0) | 11,516 | (100.0) |
| Massachusetts | 12,447 | (45.8) | 6,306 | (23.2) | 3,014 | (11.1) | 1,927 | (7.1) | 3,486 | (12.8) | 27,180 | (100.0) |
| Michigan | 13,794 | (51.5) | 6,988 | (26.1) | 3,475 | (13.0) | 2,503 | (9.3) | 47 | (0.2) | 26,807 | (100.0) |
| Minnesota | 8,459 | (58.5) | 3,675 | (25.4) | 1,403 | (9.7) | 929 | (6.4) | 2 | (0.0) | 14,468 | (100.0) |
| Mississippi | 2,594 | (69.0) | 865 | (23.0) | 231 | (6.1) | 62 | (1.6) | 6 | (0.2) | 3,758 | (100.0) |
| Missouri | 4,389 | (55.7) | 2,219 | (28.1) | 803 | (10.2) | 471 | (6.0) | 2 | (0.0) | 7,884 | (100.0) |
| Montana | 1,197 | (49.0) | 750 | (30.7) | 305 | (12.5) | 187 | (7.7) | 2 | (0.1) | 2,441 | (100.0) |
| Nebraska | 2,846 | (68.1) | 855 | (20.5) | 300 | (7.2) | 177 | (4.2) | 0 | (0.0) | 4,178 | (100.0) |
| Nevada | 2,999 | (50.2) | 1,583 | (26.5) | 768 | (12.9) | 550 | (9.2) | 72 | (1.2) | 5,972 | (100.0) |
| New Jersey | 17,126 | (51.9) | 8,054 | (24.4) | 3,817 | (11.6) | 2,823 | (8.5) | 1,206 | (3.7) | 33,026 | (100.0) |
| New Mexico | 3,586 | (65.6) | 1,150 | (21.0) | 355 | (6.5) | 182 | (3.3) | 192 | (3.5) | 5,465 | (100.0) |
| New York City | 40,525 | (42.9) | 23,397 | (24.8) | 14,631 | (15.5) | 13,928 | (14.7) | 1,985 | (2.1) | 94,466 | (100.0) |
| North Carolina | 15,503 | (51.4) | 6,694 | (22.2) | 2,346 | (7.8) | 1,098 | (3.6) | 4,516 | (15.0) | 30,157 | (100.0) |
| North Dakota | 955 | (71.2) | 247 | (18.4) | 106 | (7.9) | 27 | (2.0) | 6 | (0.4) | 1,341 | (100.0) |
| Oklahoma | 4,606 | (64.1) | 1,746 | (24.3) | 515 | (7.2) | 266 | (3.7) | 49 | (0.7) | 7,182 | (100.0) |
| Oregon | 8,089 | (57.0) | 3,635 | (25.6) | 1,466 | (10.3) | 955 | (6.7) | 49 | (0.3) | 14,194 | (100.0) |
| Pennsylvania | 19,693 | (55.3) | 9,396 | (26.4) | 3,984 | (11.2) | 2,538 | (7.1) | 19 | (0.1) | 35,630 | (100.0) |
| Rhode Island | 3,047 | (56.3) | 1,442 | (26.6) | 530 | (9.8) | 371 | (6.9) | 23 | (0.4) | 5,413 | (100.0) |
| South Carolina | 4,730 | (62.8) | 1,967 | (26.1) | 588 | (7.8) | 160 | (2.1) | 82 | (1.1) | 7,527 | (100.0) |
| South Dakota | 627 | (71.4) | 189 | (21.5) | 38 | (4.3) | 22 | (2.5) | 2 | (0.2) | 878 | (100.0) |
| Tennessee | 9,222 | (52.8) | 4,748 | (27.2) | 2,154 | (12.3) | 1,332 | (7.6) | 23 | (0.1) | 17,479 | (100.0) |
| Texas | 45,416 | (59.7) | 19,986 | (26.3) | 6,831 | (9.0) | 3,490 | (4.6) | 398 | (0.5) | 76,121 | (100.0) |
| Utah | 2,343 | (66.8) | 779 | (22.2) | 221 | (6.3) | 166 | (4.7) | 0 | (0.0) | 3,509 | (100.0) |
| Vermont | 1,123 | (63.1) | 424 | (23.8) | 142 | (8.0) | 90 | (5.1) | 2 | (0.1) | 1,781 | (100.0) |
| Virginia | 12,886 | (46.0) | 8,025 | (28.7) | 2,943 | (10.5) | 1,396 | (5.0) | 2,749 | (9.8) | 27,999 | (100.0) |
| Washington | 13,829 | (53.8) | 6,795 | (26.4) | 2,870 | (11.2) | 2,084 | (8.1) | 114 | (0.4) | 25,692 | (100.0) |
| West Virginia | 1,900 | (74.5) | 469 | (18.4) | 113 | (4.4) | 67 | (2.6) | 0 | (0.0) | 2,549 | (100.0) |
| Total | 313,744 | (53.2) | 151,554 | (25.7) | 64,503 | (10.9) | 43,759 | (7.4) | 16,093 | (2.7) | 589,653 | (100.0) |

* Data from 37 states and New York City; excludes six areas where number of previous induced abortions was reported as unknown for >15% of women.

† Percentages might not add to 100.0 because of rounding.

§ Includes residents only.

TABLE 14. Reported legal abortions, by known race, age group, and marital status of women who obtained an abortion — selected states, United States, 2000

| Characteristic | Race | | | | Total | |
|------------------------|----------------|----------------|----------------|----------------|----------------|----------------|
| | White | | Black/other | | No. | (%) |
| | No. | (%) | No. | (%) | | |
| Age group (yrs) | | | | | | |
| <15 | 1,633 | (0.5) | 2,114 | (0.9) | 3,747 | (0.7) |
| 15–19 | 58,585 | (18.5) | 39,886 | (16.6) | 98,471 | (17.7) |
| 20–24 | 104,566 | (33.0) | 80,175 | (33.3) | 184,741 | (33.2) |
| 25–29 | 69,078 | (21.8) | 59,624 | (24.8) | 128,702 | (23.1) |
| 30–34 | 44,292 | (14.0) | 35,072 | (14.6) | 79,364 | (14.2) |
| 35–39 | 28,267 | (8.9) | 18,327 | (7.6) | 46,594 | (8.4) |
| ≥40 | 10,074 | (3.2) | 5,532 | (2.3) | 15,606 | (2.8) |
| Total* | 316,495 | (100.0) | 240,730 | (100.0) | 557,225 | (100.0) |
| Marital status | | | | | | |
| Married | 60,143 | (20.9) | 34,424 | (15.7) | 94,567 | (18.6) |
| Unmarried | 227,152 | (79.1) | 185,406 | (84.3) | 412,558 | (81.4) |
| Total† | 287,295 | (100.0) | 219,830 | (100.0) | 507,125 | (100.0) |

* Data from 38 states and New York City; excludes four states where race was reported as unknown for >15% of women.

† Data from 33 states and New York City; excludes six states where race or marital status was reported as unknown for >15% of women.

TABLE 15. Reported legal abortions, by known ethnicity, age group, and marital status of women who obtained an abortion — selected states, United States, 2000

| Characteristic | Ethnicity | | | | Total | |
|------------------------|---------------|----------------|----------------|----------------|----------------|----------------|
| | Hispanic | | Non-Hispanic | | No. | (%) |
| | No. | (%) | No. | (%) | | |
| Age group (yrs) | | | | | | |
| <15 | 476 | (0.6) | 2,591 | (0.7) | 3,067 | (0.7) |
| 15–19 | 13,680 | (17.0) | 67,523 | (17.8) | 81,203 | (17.7) |
| 20–24 | 27,982 | (34.8) | 123,434 | (32.6) | 151,416 | (32.9) |
| 25–29 | 19,613 | (24.4) | 86,807 | (22.9) | 106,420 | (23.2) |
| 30–34 | 11,216 | (13.9) | 54,572 | (14.4) | 65,788 | (14.3) |
| 35–39 | 5,732 | (7.1) | 32,868 | (8.7) | 38,600 | (8.4) |
| ≥40 | 1,773 | (2.2) | 11,280 | (3.0) | 13,053 | (2.8) |
| Total* | 80,472 | (100.0) | 379,075 | (100.0) | 459,547 | (100.0) |
| Marital status | | | | | | |
| Married | 15,219 | (20.1) | 65,506 | (18.0) | 80,725 | (18.3) |
| Unmarried | 60,367 | (79.9) | 299,044 | (82.0) | 359,411 | (81.7) |
| Total† | 75,586 | (100.0) | 364,550 | (100.0) | 440,136 | (100.0) |

* Data from 28 states and New York City; excludes 10 states where ethnicity was reported as unknown for >15% of women. Percentages might not add to 100.0 because of rounding.

† Data from 26 states and New York City; excludes 10 states where ethnicity or marital status was reported as unknown for >15% of women.

TABLE 16. Reported legal abortions, by known weeks of gestation, age group, race, and ethnicity of women who obtained an abortion — selected states, United States, 2000

| Characteristic | Weeks of gestation | | | | | | | | | | Total | | | |
|------------------------|--------------------|---------------|----------------|---------------|---------------|---------------|---------------|--------------|---------------|--------------|--------------|--------------|----------------|----------------|
| | ≤8 | | 9–10 | | 11–12 | | 13–15 | | 16–20 | | | | ≥21 | |
| | No. | (%) | No. | (%) | No. | (%) | No. | (%) | No. | (%) | No. | (%) | No. | (%)* |
| Age group (yrs) | | | | | | | | | | | | | | |
| <15 | 1,551 | (38.8) | 830 | (20.8) | 566 | (14.2) | 455 | (11.4) | 395 | (9.9) | 202 | (5.1) | 3,999 | (100.0) |
| 15–19 | 52,580 | (48.3) | 23,558 | (21.7) | 14,082 | (12.9) | 9,053 | (8.3) | 6,903 | (6.3) | 2,618 | (2.4) | 108,794 | (100.0) |
| 20–24 | 114,159 | (56.5) | 41,160 | (20.4) | 21,598 | (10.7) | 13,343 | (6.6) | 8,803 | (4.4) | 2,838 | (1.4) | 201,901 | (100.0) |
| 25–29 | 87,715 | (62.1) | 26,734 | (18.9) | 12,732 | (9.0) | 7,537 | (5.3) | 4,911 | (3.5) | 1,535 | (1.1) | 141,164 | (100.0) |
| 30–34 | 55,901 | (64.0) | 16,038 | (18.4) | 7,326 | (8.4) | 4,143 | (4.7) | 2,853 | (3.3) | 1,024 | (1.2) | 87,285 | (100.0) |
| 35–39 | 32,662 | (63.6) | 9,270 | (18.1) | 4,229 | (8.2) | 2,448 | (4.8) | 2,071 | (4.0) | 653 | (1.3) | 51,333 | (100.0) |
| ≥40 | 11,443 | (66.0) | 2,898 | (16.7) | 1,310 | (7.6) | 781 | (4.5) | 717 | (4.1) | 189 | (1.1) | 17,338 | (100.0) |
| Total† | 356,011 | (58.2) | 120,488 | (19.7) | 61,843 | (10.1) | 37,760 | (6.2) | 26,653 | (4.4) | 9,059 | (1.5) | 611,814 | (100.0) |
| Race | | | | | | | | | | | | | | |
| White | 183,536 | (60.4) | 58,576 | (19.3) | 28,870 | (9.5) | 16,975 | (5.6) | 11,833 | (3.9) | 3,954 | (1.3) | 303,744 | (100.0) |
| Black | 104,066 | (53.9) | 40,080 | (20.8) | 22,520 | (11.7) | 13,693 | (7.1) | 9,402 | (4.9) | 3,240 | (1.7) | 193,001 | (100.0) |
| Other | 23,557 | (64.3) | 6,290 | (17.2) | 2,771 | (7.6) | 1,904 | (5.2) | 1,597 | (4.4) | 534 | (1.5) | 36,653 | (100.0) |
| Total§ | 311,159 | (58.3) | 104,946 | (19.7) | 54,161 | (10.2) | 32,572 | (6.1) | 22,832 | (4.3) | 7,728 | (1.4) | 533,398 | (100.0) |
| Ethnicity | | | | | | | | | | | | | | |
| Hispanic | 46,831 | (59.1) | 15,211 | (19.2) | 7,411 | (9.3) | 5,134 | (6.5) | 3,660 | (4.6) | 1,044 | (1.3) | 79,291 | (100.0) |
| Non-Hispanic | 209,681 | (57.0) | 73,751 | (20.0) | 38,131 | (10.4) | 23,224 | (6.3) | 17,086 | (4.6) | 6,169 | (1.7) | 368,042 | (100.0) |
| Total¶ | 256,512 | (57.3) | 88,962 | (19.9) | 45,542 | (10.2) | 28,358 | (6.3) | 20,746 | (4.6) | 7,213 | (1.6) | 447,333 | (100.0) |

* Percentages might not add to 100.0 because of rounding.

† Data from 40 states and New York City; excludes two states where weeks of gestation was reported as unknown for >15% of women.

§ Data from 36 states and New York City; excludes four states where weeks of gestation or race was reported as unknown for >15% of women.

¶ Data from 27 states and New York City; excludes 10 states where weeks of gestation or ethnicity was reported as unknown for >15% of women.

TABLE 17. Reported legal abortions obtained at ≤8 weeks of gestation, by known weeks of gestation, age group, race, and ethnicity of women who obtained an abortion — selected states, United States, 2000

| Characteristic | Weeks of gestation | | | | | | Total | |
|------------------------|--------------------|---------------|----------------|---------------|----------------|---------------|----------------|---------------|
| | ≤6 | | 7 | | 8 | | | |
| | No. | (%)* | No. | (%)* | No. | (%)* | No. | (%)* |
| Age group (yrs) | | | | | | | | |
| <15 | 555 | (14.1) | 453 | (11.5) | 522 | (13.3) | 1,530 | (39.0) |
| 15–19 | 18,766 | (17.6) | 16,005 | (15.0) | 16,915 | (15.8) | 51,686 | (48.4) |
| 20–24 | 44,228 | (22.3) | 34,570 | (17.4) | 33,584 | (16.9) | 112,382 | (56.6) |
| 25–29 | 35,612 | (25.7) | 26,516 | (19.1) | 24,214 | (17.5) | 86,342 | (62.2) |
| 30–34 | 23,196 | (27.0) | 16,769 | (19.5) | 15,101 | (17.6) | 55,066 | (64.1) |
| 35–39 | 13,512 | (26.8) | 9,841 | (19.5) | 8,755 | (17.4) | 32,108 | (63.7) |
| ≥40 | 5,004 | (29.4) | 3,325 | (19.5) | 2,938 | (17.3) | 11,267 | (66.1) |
| Total† | 140,873 | (23.4) | 107,479 | (17.9) | 102,029 | (17.0) | 350,381 | (58.3) |
| Race | | | | | | | | |
| White | 75,510 | (24.9) | 56,244 | (18.5) | 51,782 | (17.0) | 183,536 | (60.4) |
| Black | 39,636 | (20.5) | 32,089 | (16.6) | 32,341 | (16.8) | 104,066 | (53.9) |
| Other | 10,483 | (28.6) | 6,913 | (18.9) | 6,161 | (16.8) | 23,557 | (64.3) |
| Total§ | 125,629 | (23.6) | 95,246 | (17.9) | 90,284 | (16.9) | 311,159 | (58.3) |
| Ethnicity | | | | | | | | |
| Hispanic | 19,603 | (24.7) | 14,193 | (17.9) | 13,035 | (16.4) | 46,831 | (59.1) |
| Non-Hispanic | 80,339 | (21.8) | 66,269 | (18.0) | 63,073 | (17.1) | 209,681 | (56.9) |
| Total¶ | 99,942 | (22.3) | 80,462 | (18.0) | 76,108 | (17.0) | 256,512 | (57.3) |

* Percentages were calculated using total number of abortions obtained at all known weeks of gestation. Percentages might not add to the percentage obtained at ≤8 weeks of gestation because fewer states are included here.

† Data from 39 states and New York City; excludes two states where weeks of gestation was reported as unknown for >15% of women.

§ Data from 36 states and New York City; excludes four states where weeks of gestation or race was reported as unknown for >15% of women.

¶ Data from 27 states and New York City; excludes 10 states where weeks of gestation or ethnicity was reported as unknown for >15% of women.

TABLE 18. Reported legal abortions, by known weeks of gestation and type of procedure — selected states,* United States, 2000

| Type of procedure | Weeks of gestation | | | | | | | | | | Total | | | |
|---|--------------------|----------------|----------------|----------------|---------------|----------------|---------------|----------------|---------------|----------------|--------------|----------------|----------------|----------------|
| | ≤8 | | 9–10 | | 11–12 | | 13–15 | | 16–20 | | | | ≥21 | |
| | No. | (%) | No. | (%) | No. | (%) | No. | (%) | No. | (%) | No. | (%) | No. | (%) |
| Curettage (suction or sharp)† | 340,964 | (98.0) | 116,834 | (99.6) | 59,709 | (99.6) | 36,377 | (98.9) | 24,536 | (94.6) | 7,501 | (85.0) | 585,921 | (98.2) |
| Intrauterine saline instillation | 235 | (0.1) | 114 | (0.1) | 73 | (0.1) | 272 | (0.7) | 725 | (2.8) | 214 | (2.4) | 1,633 | (0.3) |
| Intrauterine prostaglandin instillation | 1 | (0.0)§ | 0 | (0.0)§ | 0 | (0.0)§ | 6 | (0.0)§ | 15 | (0.1) | 14 | (0.2) | 36 | (0.0)§ |
| Medical¶ | 5,508 | (1.6) | 97 | (0.1) | 21 | (0.0)§ | 44 | (0.1) | 350 | (1.3) | 209 | (2.4) | 6,229 | (1.0) |
| Other** | 1,178 | (0.3) | 297 | (0.3) | 165 | (0.3) | 90 | (0.2) | 312 | (1.2) | 888 | (10.1) | 2,930 | (0.5) |
| Total†† | 347,886 | (100.0) | 117,342 | (100.0) | 59,968 | (100.0) | 36,789 | (100.0) | 25,938 | (100.0) | 8,826 | (100.0) | 596,749 | (100.0) |

* Data from 37 states and New York City; excludes two states where weeks of gestation was reported as unknown for >15% of women.

† Includes dilatation and evacuation.

§ <0.05%.

¶ Medical (nonsurgical) procedures differed by weeks of gestation (i.e., methotrexate and misoprostol or mifepristone and misoprostol were reported for abortions performed at ≤8 weeks gestation; vaginal prostaglandins were primarily reported for abortions performed at later weeks of gestation).

** Includes hysterotomy/hysterectomy and procedures reported as "other."

†† Percentages might not add to 100.0 because of rounding.

TABLE 19. Number of deaths and case-fatality rates* for abortion-related deaths reported to CDC, by type of abortion — United States, 1972–1999†

| Year | Type of abortion | | | Total | Case-fatality rate* |
|--------------|------------------|-----------|-----------|------------|---------------------|
| | Induced | | Unknown§ | | |
| | Legal | Illegal | | | |
| 1972 | 24 | 39 | 2 | 65 | 4.1 |
| 1973 | 25 | 19 | 3 | 47 | 4.1 |
| 1974 | 26 | 6 | 1 | 33 | 3.4 |
| 1975 | 29 | 4 | 1 | 34 | 3.4 |
| 1976 | 11 | 2 | 1 | 14 | 1.1 |
| 1977 | 17 | 4 | 0 | 21 | 1.6 |
| 1978 | 9 | 7 | 0 | 16 | 0.8 |
| 1979 | 22 | 0 | 0 | 22 | 1.8 |
| 1980 | 9 | 1 | 2 | 12 | 0.7 |
| 1981 | 8 | 1 | 0 | 9 | 0.6 |
| 1982 | 11 | 1 | 0 | 12 | 0.8 |
| 1983 | 11 | 1 | 0 | 12 | 0.9 |
| 1984 | 12 | 0 | 0 | 12 | 0.9 |
| 1985 | 11 | 1 | 1 | 13 | 0.8 |
| 1986 | 11 | 0 | 2 | 13 | 0.8 |
| 1987 | 7 | 2 | 0 | 9 | 0.5 |
| 1988 | 16 | 0 | 0 | 16 | 1.2 |
| 1989 | 12 | 1 | 0 | 13 | 0.9 |
| 1990 | 9 | 0 | 0 | 9 | 0.6 |
| 1991 | 11 | 1 | 0 | 12 | 0.8 |
| 1992 | 10 | 0 | 0 | 10 | 0.7 |
| 1993 | 6 | 1 | 2 | 9 | 0.5 |
| 1994 | 10 | 2 | 0 | 12 | 0.8 |
| 1995 | 4 | 0 | 0 | 4 | 0.3 |
| 1996 | 9 | 0 | 0 | 9 | 0.7 |
| 1997 | 7 | 0 | 0 | 7 | 0.6 |
| 1998 | 10 | 0 | 0 | 10 | ¶ |
| 1999 | 4 | 0 | 0 | 4 | ¶ |
| Total | 351 | 93 | 15 | 459 | 1.1** |

* Legal induced abortion-related deaths per 100,000 reported legal induced abortions.

† Numbers may differ from those in previously published reports because additional information has been supplied to CDC.

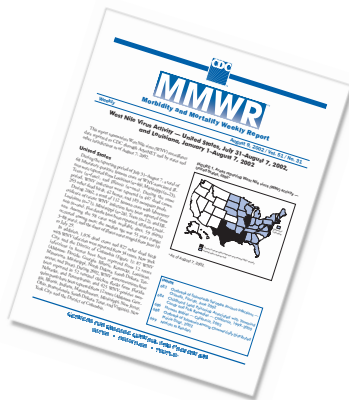
§ Unknown whether abortion was induced or spontaneous.

¶ Case-fatality rates for 1998–1999 cannot be calculated because a substantial number of abortions occurred in the four nonreporting states, and the total number of abortions (the denominator) is unknown.

** Case-fatality rate computed for 1972–1997 only.

dis·patch: *n*

(dis-'pach) 1 : a written message,
particularly an official communication,
sent with speed; see also *MMWR*.



know what matters.



The *Morbidity and Mortality Weekly Report (MMWR)* Series is prepared by the Centers for Disease Control and Prevention (CDC) and is available free of charge in electronic format and on a paid subscription basis for paper copy. To receive an electronic copy each week, send an e-mail message to listserv@listserv.cdc.gov. The body content should read *SUBscribe mmwr-toc*. Electronic copy also is available from CDC's World-Wide Web server at <http://www.cdc.gov/mmwr> or from CDC's file transfer protocol server at <ftp://ftp.cdc.gov/pub/publications/mmwr>. To subscribe for paper copy, contact Superintendent of Documents, U.S. Government Printing Office, Washington, DC 20402; telephone 202-512-1800.

Data in the weekly *MMWR* are provisional, based on weekly reports to CDC by state health departments. The reporting week concludes at close of business on Friday; compiled data on a national basis are officially released to the public on the following Friday. Address inquiries about the *MMWR* Series, including material to be considered for publication, to Editor, *MMWR* Series, Mailstop C-08, CDC, 1600 Clifton Rd., N.E., Atlanta, GA 30333; telephone 888-232-3228.

All material in the *MMWR* Series is in the public domain and may be used and reprinted without permission; citation as to source, however, is appreciated.

All *MMWR* references are available on the Internet at <http://www.cdc.gov/mmwr>. Use the search function to find specific articles.

Use of trade names and commercial sources is for identification only and does not imply endorsement by the U.S. Department of Health and Human Services.

References to non-CDC sites on the Internet are provided as a service to *MMWR* readers and do not constitute or imply endorsement of these organizations or their programs by CDC or the U.S. Department of Health and Human Services. CDC is not responsible for the content of these sites. URL addresses listed in *MMWR* were current as of the date of publication.