

Self-Reported Influenza-Like Illness During the 2009 H1N1 Influenza Pandemic — United States, September 2009–March 2010

CDC identified the first case of 2009 H1N1 pandemic influenza on April 15, 2009. During the first 3 months of the outbreak, approximately 43,000 cases were reported to CDC (1). In June 2009, the World Health Organization declared the outbreak an influenza pandemic. Because no existing influenza surveillance system in the United States monitored influenza-like illness (ILI) among persons with ILI who did not seek health care, CDC initiated community-based surveillance of self-reported ILI (defined as the presence of fever with cough or sore throat) and health-care-seeking behavior through a supplementary module of the Behavioral Risk Factor Surveillance System (BRFSS). This report summarizes results from BRFSS surveys conducted during September 2009–March 2010. Among 216,431 adults and 43,511 children (aged <18 years), the average monthly percentage of respondents reporting ILI in the 30 days preceding the interview was 8.1% among adults (range: 5.5% for September interviews to 9.5% for November) and 28.4% among children (range: 20.4% for September interviews to 35.9% for November). Health care was sought by 40% of adults and 56% of children with self-reported ILI. The results indicate that reported symptoms of ILI were widespread during the 2009–10 influenza season, with a substantial percentage of those reporting ILI seeking health care.

BRFSS conducts state-based, random-digit-dialed telephone surveys of the noninstitutionalized U.S. population aged ≥18 years to determine the prevalence of health conditions and health risk behaviors (2). From September 1, 2009, to March 31, 2010, BRFSS respondents in 49 states (excluding Vermont), the District of Columbia (DC), and Puerto Rico were interviewed using a new module for ILI. One of each respondent's children also was eligible to be the subject of the interview in 39 of the 49 states, DC, and Puerto Rico. Reported fever with cough or sore throat during the 30 days preceding the interview (for themselves or their child) was

defined as having ILI in the past month.* Those respondents who reported ILI also were asked if they (or their child) visited a health-care professional for the illness.†

Average monthly percentages of self-reported ILI were calculated. ILI was analyzed by age group, month of interview, sex, race/ethnicity,§ and U.S. Census region.¶ Percentage estimates for race/ethnicity were age-adjusted by the direct method to the 2000 U.S. Census population. Respondents with missing ILI status or who resided in states where interviews were conducted for <6 months were excluded from analysis. Results were weighted to reflect selected demographic and geographic population estimates, in accordance with BRFSS weighting

*To determine the presence of ILI among adult respondents, two questions were asked: "During the past month, were you ill with a fever?" and "Did you also have a cough and/or sore throat?" A "yes" response to both was classified as ILI. To determine the presence of ILI among children, adult respondents were asked one question about their child: "Has the child had a fever with cough and/or sore throat during the past month?" A "yes" response was classified as ILI.

†To determine whether medical care was sought among those with ILI, respondents were asked: "Did you [or your child] visit a doctor, nurse, or other health professional for this illness?"

§ Respondents were categorized into four non-Hispanic racial populations: white, black, American Indian/Alaska Native, and other race. Person categorized as Hispanic might be of any race.

¶ *Northeast:* Connecticut, Maine, Massachusetts, New Hampshire, New Jersey, New York, Pennsylvania, Rhode Island, and Vermont. *Midwest:* Illinois, Indiana, Iowa, Kansas, Michigan, Minnesota, Missouri, Nebraska, North Dakota, Ohio, South Dakota, and Wisconsin. *South:* Alabama, Arkansas, Delaware, District of Columbia, Florida, Georgia, Kentucky, Louisiana, Maryland, Mississippi, North Carolina, Oklahoma, South Carolina, Tennessee, Texas, Virginia, and West Virginia. *West:* Alaska, Arizona, California, Colorado, Hawaii, Idaho, Montana, Nevada, New Mexico, Oregon, Utah, Washington, and Wyoming.

INSIDE

- 42 CDC Grand Rounds: Childhood Obesity in the United States
- 46 Announcement
- 47 QuickStats



methodology (2). Response rates for BRFSS were calculated using Council of American Survey and Research Organizations (CASRO) guidelines. Median survey response rates were 55.2%, calculated as the percentage of persons who completed interviews among all eligible persons, including those who were not contacted. Median cooperation rates were 75.3%, calculated as the percentage of persons who completed interviews among all eligible persons who were contacted. Statistical significance was determined by *t* tests where appropriate; comparisons were considered statistically significant at $p < 0.05$.

In interviews conducted during September 2009–March 2010, the average monthly percentage of adults reporting ILI was 8.1%, and the percentage of children with reported ILI was 28.4% (Table). Reported ILI among adults (9.5%) and children (35.9%) peaked in November interviews, which corresponds with illness in October or November. This pattern was observed in all census regions, except among adults in the South, where ILI peaked in December interviews (Figure 1). Reported ILI among adults (5.5%) and children (20.4%) was lowest for September interviews.

The monthly percentage of respondents reporting ILI decreased with age; the percentage was highest among children aged 0–4 years (32.7%) and lowest among adults aged ≥ 65 years (3.2%). Among all adults, a significantly higher percentage of women (9.0%) reported ILI than men (7.1%), but no statistically significant difference by sex was observed among children ($p = 0.11$). Compared with white adults (8.4%) and children (29.9%), those identified as American Indian/Alaska Native adults (16.3%) and children (40.8%) reported significantly

higher ILI prevalence, and those identified as black adults (7.2%) and children (23.3%) reported significantly lower ILI prevalence.

Among adults, no statistically significant differences were observed by census region. However, among children, those in the Midwest (29.4%) and South (29.5%) were significantly more likely to have reported ILI than those in the Northeast (26.2%). By state, adults in Arkansas were the most likely to report ILI (11.5%), whereas those in Delaware were the least likely (5.3%) (Figure 2). Among children, those in Oklahoma were the most likely to report ILI (33.4%), whereas those in DC were the least likely (21.5%). Health care was sought by 40% of adults and 56% of children with ILI.

Reported by

M Biggerstaff, MPH, L Kamimoto, MD, L Finelli, DrPH, Influenza Div, National Center for Immunization and Respiratory Diseases; L Balluz, PhD, ScD, Div of Behavioral Surveillance, Office of Surveillance, Epidemiology, and Laboratory Svcs, CDC.

Editorial Note

With the emergence of 2009 H1N1 influenza, CDC initiated community-based monitoring of self-reported ILI as a method for assessing the impact of 2009 H1N1 influenza on persons who did not seek health care. Results indicate that self-reported ILI was more common among younger respondents and less common among older respondents, a finding consistent with reports from other influenza surveillance systems (1).

The *MMWR* series of publications is published by the Office of Surveillance, Epidemiology, and Laboratory Services, Centers for Disease Control and Prevention (CDC), U.S. Department of Health and Human Services, Atlanta, GA 30333.

Suggested citation: Centers for Disease Control and Prevention. [Article title]. *MMWR* 2011;60:[inclusive page numbers].

Centers for Disease Control and Prevention

Thomas R. Frieden, MD, MPH, *Director*
 Harold W. Jaffe, MD, MA, *Associate Director for Science*
 James W. Stephens, PhD, *Office of the Associate Director for Science*
 Stephen B. Thacker, MD, MSc, *Deputy Director for Surveillance, Epidemiology, and Laboratory Services*
 Stephanie Zaza, MD, MPH, *Director, Epidemiology and Analysis Program Office*

MMWR Editorial and Production Staff

Ronald L. Moolenaar, MD, MPH, *Editor, MMWR Series*
 John S. Moran, MD, MPH, *Deputy Editor, MMWR Series*
 Robert A. Gunn, MD, MPH, *Associate Editor, MMWR Series*
 Teresa F. Rutledge, *Managing Editor, MMWR Series*
 Douglas W. Weatherwax, *Lead Technical Writer-Editor*
 Donald G. Meadows, MA, Jude C. Rutledge, *Writer-Editors*
 Martha F. Boyd, *Lead Visual Information Specialist*
 Malbea A. LaPete, Julia C. Martinroe,
 Stephen R. Spriggs, Terraye M. Starr
Visual Information Specialists
 Quang M. Doan, MBA, Phyllis H. King
Information Technology Specialists

MMWR Editorial Board

William L. Roper, MD, MPH, Chapel Hill, NC, *Chairman*
 Virginia A. Caine, MD, Indianapolis, IN
 Jonathan E. Fielding, MD, MPH, MBA, Los Angeles, CA
 David W. Fleming, MD, Seattle, WA
 William E. Halperin, MD, DrPH, MPH, Newark, NJ
 King K. Holmes, MD, PhD, Seattle, WA
 Deborah Holtzman, PhD, Atlanta, GA
 John K. Iglehart, Bethesda, MD
 Dennis G. Maki, MD, Madison, WI
 Patricia Quinlisk, MD, MPH, Des Moines, IA
 Patrick L. Remington, MD, MPH, Madison, WI
 Barbara K. Rimer, DrPH, Chapel Hill, NC
 John V. Rullan, MD, MPH, San Juan, PR
 William Schaffner, MD, Nashville, TN
 Anne Schuchat, MD, Atlanta, GA
 Dixie E. Snider, MD, MPH, Atlanta, GA
 John W. Ward, MD, Atlanta, GA

TABLE. Average monthly percentage of children* and adults with reported influenza-like illness (ILI) during the preceding 30 days, by selected characteristics — Behavioral Risk Factor Surveillance System, United States, September 2009–March 2010

Characteristic	Children			Adults		
	Sample size	%	(95% CI)	Sample size	%	(95% CI)
Total	43,511	28.4	(27.6–29.2)	216,431	8.1	(7.8–8.4)
Sex						
Male	21,619	27.9	(26.8–29.1)	81,931	7.1	(6.7–7.6)
Female	19,821	29.3	(28.1–30.5)	134,500	9.0	(8.6–9.4)
Race/Ethnicity†						
White	28,930	29.9	(29.0–30.9)	169,376	8.4	(8.1–8.7)
Black	3,756	23.3	(21.0–25.8)	17,129	7.2	(6.3–8.2)
Hispanic	6,112	27.6	(25.6–29.6)	14,508	7.5	(6.7–8.4)
American Indian/Alaska Native	960	40.8	(31.4–51.0)	2,916	16.3	(12.2–21.5)
Other race	3,127	28.8	(26.0–31.8)	8,618	9.1	(7.8–10.6)
Age group (yrs)						
0–4	9,985	32.7	(30.9–34.6)	—	—	—
5–11	15,506	29.4	(28.1–30.7)	—	—	—
12–17	17,944	24.2	(23.0–25.4)	—	—	—
18–49	—	—	—	71,684	10.1	(9.7–10.6)
50–64	—	—	—	72,167	6.8	(6.4–7.2)
≥65	—	—	—	70,880	3.2	(3.0–3.5)
U.S. Census§						
Northeast	6,812	26.2	(24.4–28.2)	33,440	7.7	(7.0–8.4)
Midwest	11,604	29.4	(27.8–31.0)	51,872	7.8	(7.3–8.3)
South	11,259	29.5	(28.0–31.1)	74,424	8.4	(8.0–8.9)
West	13,288	28.0	(26.5–29.6)	54,423	8.2	(7.5–8.8)

Abbreviation: CI = confidence interval.

* Aged <18 years.

† Persons categorized as white, black, American Indian/Alaska Native, and other race are all non-Hispanic. Persons categorized as Hispanic might be of any race.

§ *Northeast:* Connecticut, Maine, Massachusetts, New Hampshire, New Jersey, New York, Pennsylvania, Rhode Island, and Vermont. *Midwest:* Illinois, Indiana, Iowa, Kansas, Michigan, Minnesota, Missouri, Nebraska, North Dakota, Ohio, South Dakota, and Wisconsin. *South:* Alabama, Arkansas, Delaware, District of Columbia, Florida, Georgia, Kentucky, Louisiana, Maryland, Mississippi, North Carolina, Oklahoma, South Carolina, Tennessee, Texas, Virginia, and West Virginia. *West:* Alaska, Arizona, California, Colorado, Hawaii, Idaho, Montana, Nevada, New Mexico, Oregon, Utah, Washington, and Wyoming.

After adjusting for age, the percentage of self-reported ILI in adults and children was similar among whites and Hispanics, moderately lower among black adults and children, and significantly higher among American Indian/Alaska Native adults and children. Reasons for these differences are not clear and are being investigated, but severe outcomes from influenza and other respiratory infections have been reported more commonly among children in certain racial/ethnic groups than in others (3).

The findings in this report are subject to at least five limitations. First, BRFSS ILI data are self-reported or reported by parents for their children; thus, symptoms, including fever, were not confirmed. However, self-reported symptoms of infectious illness, including respiratory illnesses, have shown close congruence with physician documentation (4). Second, the reported cases of ILI were not laboratory-confirmed as influenza infection. Influenza infection can cause illnesses that do not meet the ILI case definition (e.g., respiratory illness without fever); conversely, illnesses meeting the ILI criteria can be caused by multiple pathogens other than influenza (e.g., respiratory syncytial virus). Studies have indicated that 10%–25% of all respiratory illnesses occurring during periods

What is already known on this topic?

CDC identified the first case of 2009 H1N1 pandemic influenza on April 15, 2009. In June 2009, the World Health Organization declared the outbreak an influenza pandemic. Routine U.S. influenza surveillance systems provided information describing visits to health-care providers for influenza-like illness (ILI) and reports of influenza-associated hospitalizations and deaths, but did not monitor ILI among persons who did not seek health care.

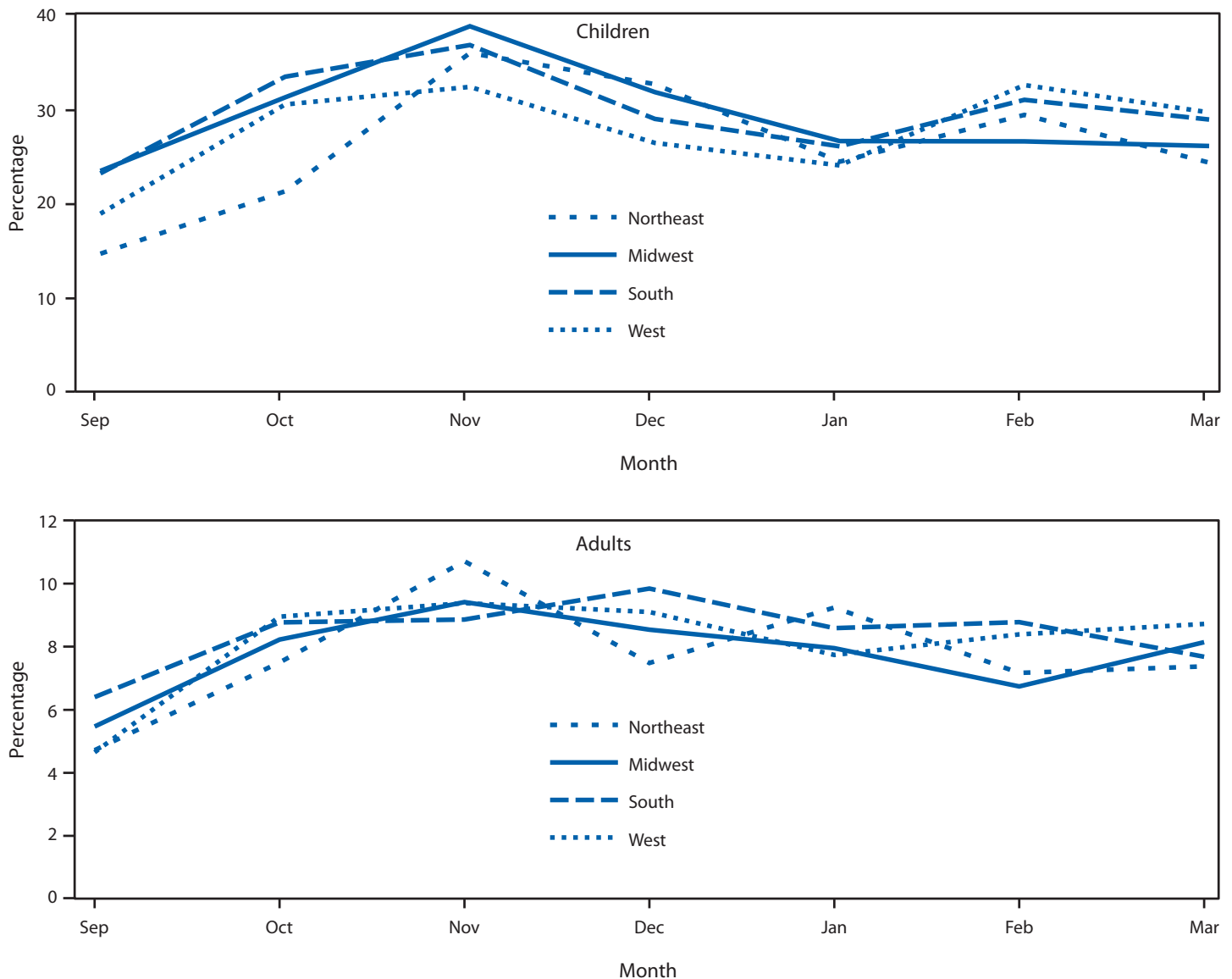
What is added by this report?

During September 2009–March 2010, the average monthly percentage of adults and children with reported symptoms of ILI during the preceding 30 days was 8.1% and 28.4%, respectively. Health care was sought by 40% of adults and 56% of children with ILI.

What are the implications for public health practice?

The results indicate that a large segment of the population reported symptoms of ILI and sought health care for those symptoms during the 2009–10 influenza season. Community-based surveillance of influenza was a useful adjunct to routine influenza surveillance and provided the only source of information regarding persons with ILI who did not seek health care.

FIGURE 1. Percentage of children* and adults with reported influenza-like illness (ILI) during the preceding 30 days, by U.S. Census region† and interview month — Behavioral Risk Factor Surveillance System, United States, September 2009–March 2010



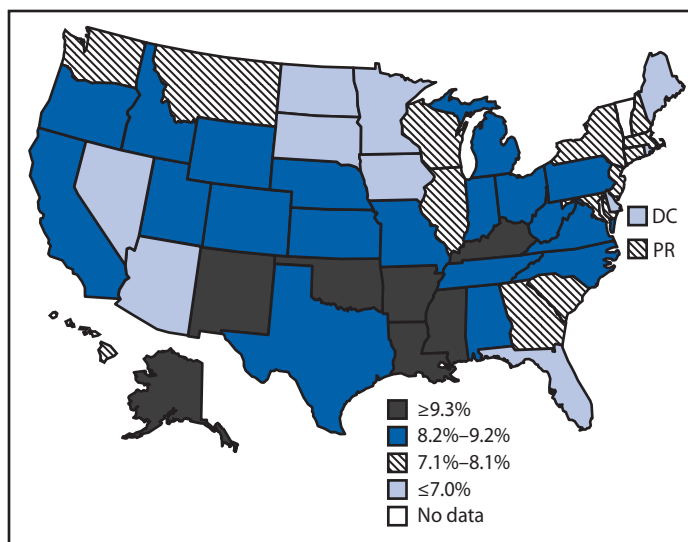
* Aged <18 years.

† *Northeast*: Connecticut, Maine, Massachusetts, New Hampshire, New Jersey, New York, Pennsylvania, Rhode Island, and Vermont. *Midwest*: Illinois, Indiana, Iowa, Kansas, Michigan, Minnesota, Missouri, Nebraska, North Dakota, Ohio, South Dakota, and Wisconsin. *South*: Alabama, Arkansas, Delaware, District of Columbia, Florida, Georgia, Kentucky, Louisiana, Maryland, Mississippi, North Carolina, Oklahoma, South Carolina, Tennessee, Texas, Virginia, and West Virginia. *West*: Alaska, Arizona, California, Colorado, Hawaii, Idaho, Montana, Nevada, New Mexico, Oregon, Utah, Washington, and Wyoming.

when influenza viruses are known to be circulating are actually laboratory-confirmed influenza (5–7). The sensitivity and specificity of the ILI definition for influenza illness can vary substantially, but requiring fever as part of the ILI criteria has been shown to increase the specificity of ILI for influenza illness (8,9). Third, BRFSS data are collected only from households with a landline telephone. Selection bias related to exclusion of households with only cellular phones or no telephone service is possible; however, BRFSS weighting methodology

partially compensates for the exclusion of households without telephones. Fourth, respondents from nine states were excluded from the analysis of ILI in children, and six of the excluded states were in the South census region. Therefore, results from the ILI analysis for children might not be representative of the United States overall and particularly of the South census region. Finally, the median state response rate for this survey period was only 55.2%; low response rates can increase the potential for bias.

FIGURE 2. Percentage of adults reporting influenza-like illness (ILI) during the preceding 30 days — Behavioral Risk Factor Surveillance System, United States,* September 2009–March 2010



*49 states (Vermont did not collect data), District of Columbia, and Puerto Rico.

Community-based ILI surveillance through BRFSS provided important information to help describe the 2009 H1N1 influenza pandemic and the epidemiology of ILI in the United States. These data were a useful adjunct to routine influenza surveillance and provided the only source of information for persons with ILI who did not seek health care. CDC continues to use the supplementary ILI module during the 2010–11 influenza season; the results will enable analysis of year-to-year trends and factors associated with self-reported ILI.

Acknowledgments

This report is based, in part, on contributions by BRFSS state coordinators; M Jhung, MD, Influenza Div, National Center for Immunization and Respiratory Diseases; and W Garvin and M Qayad, Div of Behavioral Surveillance, Office of Surveillance, Epidemiology, and Laboratory Svcs, CDC.

References

1. Jhung M, Swerdlow D, Olsen S, et al. Epidemiology of 2009 pandemic influenza A (H1N1) in the United States. *Clin Infect Dis* 2011;52 (Suppl 1):S13–26.
2. CDC. Behavioral Risk Factor Surveillance System operational and user's guide. 2006. Atlanta, GA: US Department of Health and Human Services, CDC; 2006. Available at <ftp://ftp.cdc.gov/pub/data/brfss/userguide.pdf>. Accessed January 14, 2011.
3. Iwane M, Edwards K, Szilagyi P, et al. Population-based surveillance for hospitalizations associated with respiratory syncytial virus, influenza virus, and parainfluenza viruses among young children. *Pediatrics* 2004;113:1758–64.
4. Orts K, Sheridan J, Robinson-Whelen S, Glaser R, Malarkey WB, Kiecolt-Glaser JK. The reliability and validity of a structured interview for the assessment of infectious disease symptoms. *J Behav Med* 1995;18:517–29.
5. Monto A, Ullman B. Acute respiratory illness in an American community. The Tecumseh study. *JAMA* 1974;227:164–9.
6. Bridges C, Thompson W, Meltzer M, et al. Effectiveness and cost-benefit of influenza vaccination of healthy working adults: a randomized controlled trial. *JAMA* 2000;284:1655–63.
7. Ren L, Gonzalez R, Wang Z, et al. Prevalence of human respiratory viruses in adults with acute respiratory tract infections in Beijing, 2005–2007. *Clin Microbiol Infect* 2009;15:1146–53.
8. Monto A, Gravenstein S, Elliott M, Colopy M, Schweinle J. Clinical signs and symptoms predicting influenza infection. *Arch Intern Med* 2000;160:3243–7.
9. Ong A, Chen M, Lin L, et al. Improving the clinical diagnosis of influenza—a comparative analysis of new influenza A (H1N1) cases. *PLoS ONE* 2009;4:e8453.

CDC Grand Rounds: Childhood Obesity in the United States

The magnitude of the problem

In the United States, childhood obesity affects approximately 12.5 million children and teens (17% of that population) (1). Changes in obesity prevalence from the 1960s show a rapid increase in the 1980s and 1990s, when obesity prevalence among children and teens tripled, from nearly 5% to approximately 15% (Figure 1) (1). During the past 10 years, the rapid increase in obesity has slowed and might have leveled. However, among the heaviest boys, a significant increase in obesity has been observed, with the heaviest getting even heavier. Moreover, substantial racial/ethnic disparities exist, with Hispanic boys and non-Hispanic black girls disproportionately affected by obesity (Figure 2) (1). Also, older children and teens are more likely to be obese compared with preschoolers (1).

In the short term, obesity in children can lead to psychosocial problems and to cardiovascular risk factors such as hypertension, high cholesterol, and abnormal glucose tolerance or diabetes. In one study, 70% of obese children had at least one additional cardiovascular risk factor, and 30% had two or more

(2). Although the prevalence of type 2 diabetes in teens is very low, a recent report estimated that 15% of new diabetes cases among children and adolescents are type 2 diabetes (3). In the 1980s, type 2 diabetes in teens was virtually unheard of.

The prevalence of obesity among U.S. adults (34%) is twice that observed in children and translates into nearly 73 million adult men and women (4). On average, U.S. adults weigh 24 pounds more than they did in 1960 (5), and they are at increased risk for health conditions such as diabetes, cardiovascular disease, and certain cancers. Although obesity prevalence has remained mostly flat in the past 10 years, the costs associated with obesity have increased substantially during the same period. One study estimated that approximately 9% of all medical costs in 2008 were obesity-related and amounted to \$147 billion, compared with \$78.5 billion 10 years before (6).

Challenges and strategies to combat the problem

Identification of effective interventions. Environmental determinants of childhood obesity in the United States include shifts in food consumption, changes in physical activity levels, and higher levels of television viewing, with the consequent inactivity and marketing of food to children. CDC is focusing on best available evidence to implement intervention programs. For maximum population impact, the focus should be on strategies that alter the food and physical activity environments in places where persons live, learn, work, play, and pray.

This is another in a series of occasional MMWR reports titled CDC Grand Rounds. These reports are based on grand rounds presentations at CDC on high-profile issues in public health science, practice, and policy. Information about CDC Grand Rounds is available at <http://www.cdc.gov/about/grand-rounds>.

FIGURE 1. Prevalence of obesity among children and adolescents, by age group — United States, 1963–2008

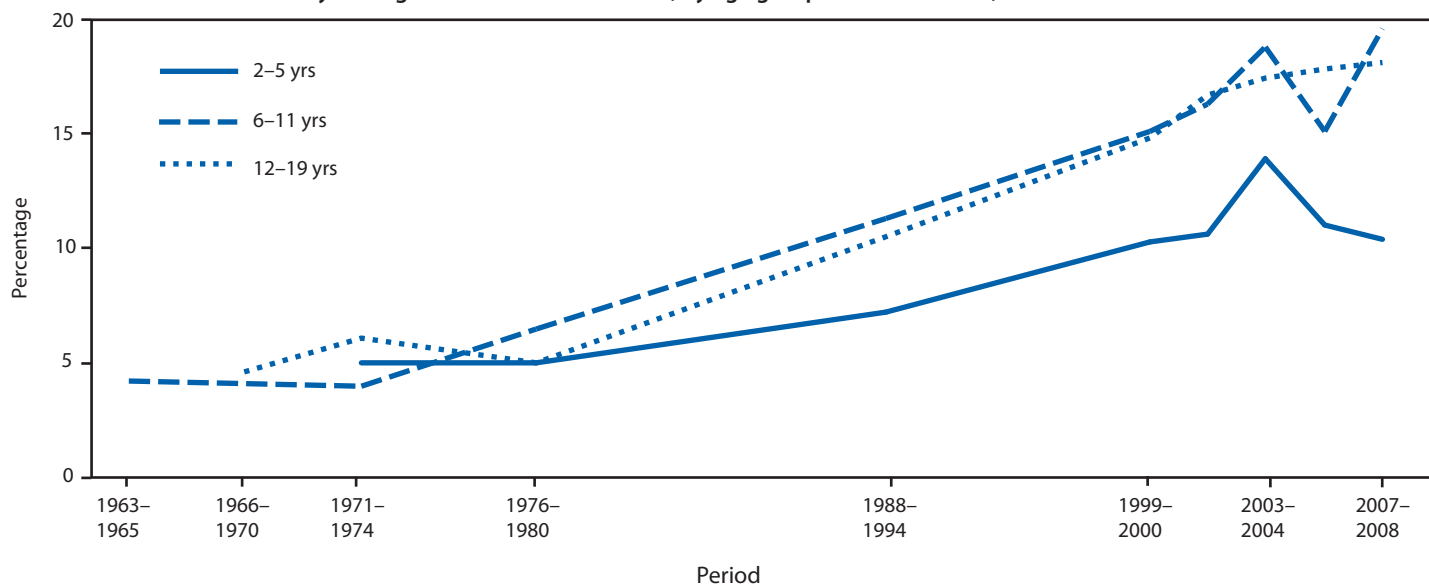
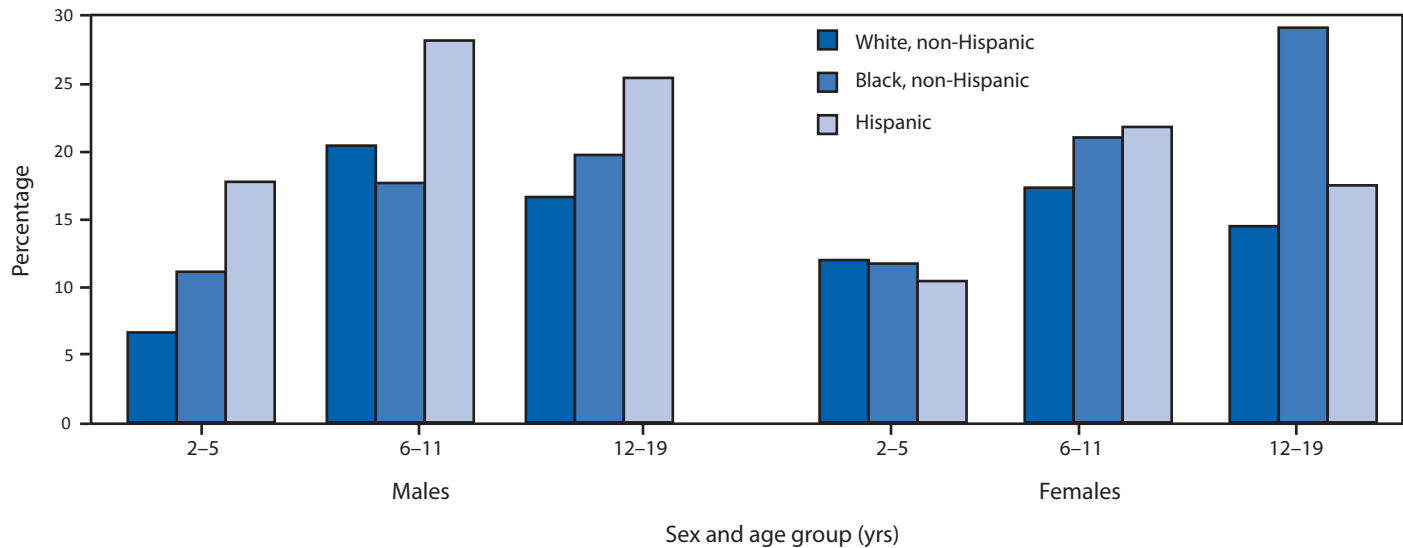


FIGURE 2. Prevalence of obesity among children and adolescents, by sex, age group, and race/ethnicity — United States, 2007–2008



Interventions aimed at single behavioral targets are unlikely to have a substantial impact, and both evidence-based practice and practice-based evidence should be considered.

Breastfeeding has been shown to have substantial health benefits for children, who consequently might be at reduced risk for childhood obesity (7). The most recent data show that nearly 30% of mothers do not breastfeed, and only approximately 40% of children are still breastfed at age 6 months (the recommended duration of exclusive breast feeding is to age 4–6 months) (8). A study of mothers' experiences during their stay at maternity-care hospitals found that duration of breastfeeding increased when the number of baby-friendly steps the mother experienced increased (e.g., initiating breastfeeding early, exclusive breastfeeding, rooming in, on-demand feedings, no pacifiers, and providing information to new mothers) (9). Interventions that encourage breastfeeding in workplaces also would increase the chances of working mothers continuing to breastfeed longer.

Strategies to reduce energy intake include decreasing consumption of high energy-density foods, increasing consumption of fruits and vegetables, decreasing consumption of sugar-sweetened beverages, and decreasing time spent watching television and exposure to food marketed to children. A substantial proportion of all money spent on food consumed outside the home is spent on fast food (10). Institutions such as child-care facilities and schools should alter their purchasing strategies to reduce the availability of high-calorie foods. Approaches to reducing energy intake through decreasing consumption of sugar drinks (sodas and 10% juice-containing beverages) include 1) enacting regulations and policies that eliminate availability of such drinks, including sports drinks, in child-care settings and schools and at school events and

after-school programs, 2) increasing availability of fresh water in parks and recreational facilities, and 3) eliminating sugar drinks in school vending machines. Reducing the amount of time children spend watching television, and thus reducing exposure to food marketed to them, can be accomplished by limiting television time at home and in child-care settings and removing televisions from children's bedrooms.

Increasing energy output through increased physical activity plays an important role in preventing and reducing obesity-related illnesses and conditions such as hyperlipidemia, hyperinsulinemia, and elevated blood pressure, even if weight is not reduced (11). Activity levels can be increased by making it safer to walk or bike to school. Quality school physical education programs that keep children moving the majority of their time in physical education class should be implemented. Providing a safe environment for physical activity and establishing habits (e.g., regular physical activity) that will lead to activity into and throughout adulthood must become priorities.

An example of a comprehensive school-based program was one that was implemented in Philadelphia, Pennsylvania, aimed at 4th, 5th, and 6th graders, which included reducing television time, increasing physical activity, and increasing fruit and vegetable intake (11). This intervention was based on CDC's *School Health Guidelines for Nutrition* (12) and included changes in the school food supply to meet the *Dietary Guidelines for Americans* (13). The 2-year intervention resulted in a 50% reduction in the incidence of overweight and a 10% reduction in prevalence of overweight. Physical inactivity and television viewing also declined (14).

Policies and systems changes in action. Changing policy often is the most effective way to implement and sustain these kinds of environmental changes. Policies not traditionally thought

of as health policies (e.g., involving transportation, land use, education, agriculture, and economics) can affect health and obesity rates. The following two examples of major policy-driven initiatives requiring system changes focus on access to healthy foods and improving the built environment, respectively.

According to the U.S. Department of Agriculture, approximately 23.5 million persons in urban and rural areas of the United States live in “food deserts” (i.e., low-income areas without access to healthy foods) (15). Improved access to healthy foods might improve eating habits and decrease obesity. The Fresh Food Financing Initiative (FFFI) in Pennsylvania is a public-private partnership that has improved access to healthy foods using one-time loans and grants; as of September 2009, it had committed \$59.7 million to projects across the state (16). As a result of FFFI, approximately 500,000 persons now have access to healthy foods who did not have it before, nearly 5,000 jobs have been created or retained, and approximately 1.5 million square feet of retail space has been created or saved (16). Eighty-three projects have been implemented, ranging from large supermarkets in urban settings to small stores in small town/rural settings, farmers markets, and community-supported agriculture. Replication of FFFI is under way in California, Colorado, Illinois, Louisiana, New Jersey, and New York. The President’s proposed 2011 budget includes support for a Healthy Food Financing Initiative (HFFI), which combines \$345 million from the U.S. Department of Agriculture, U.S. Department of Health and Human Services, and U.S. Treasury Department for loans, grants, and tax credits to support a range of projects designed to increase access to healthy foods.*

Supporting HFFI and other policies to increase access to healthy foods through different food and farm policy innovations, and improving the built environment through strategies for walkable, bikeable, and safe neighborhoods, parks, and playgrounds, particularly in underresourced communities, are the focus of the Convergence Partnership, a collaborative of six major funding organizations and CDC.† PolicyLink, a national research and policy institute serves as the Convergence Partnership program lead, providing guidance about policy and strategy.§ Local strategies for enhancing the built environment to support healthy eating and active living include walkable and bikeable neighborhoods, public transit, joint use of school yards, and health impact assessments. Public education and advocacy efforts already have increased awareness of the connection between health and transportation and have altered policy proposals.

* Additional information available at <http://www.letsmove.gov/healthycommunity.php>.

† Additional information available at <http://www.convergencepartnership.org>.

§ Additional information available at <http://www.policylink.org>.

Implementation at the state level: the Maine experience. In Maine, the pediatric community partnered with community groups, the Maine-Harvard Prevention Research Center, and the state Center for Disease Control and Prevention to develop simple steps clinicians could follow in their practices to reduce childhood obesity. These partnerships led to formation of the Maine Youth Overweight Collaborative (MYOC) in 2004.¶ It started with a simple message: 5-2-1-0: five or more fruits and vegetables per day, 2 hours or less screen time per day, 1 hour or more of physical activity per day, and zero sugar drinks coupled with more water and low fat milk consumption. This message provided clinicians with basic steps to take to combat the childhood obesity epidemic. Before MYOC, clinicians documented body mass index for age and sex approximately 25% of the time; after 24 months of MYOC in action, approximately 90% of encounters resulted in a documented body mass index.

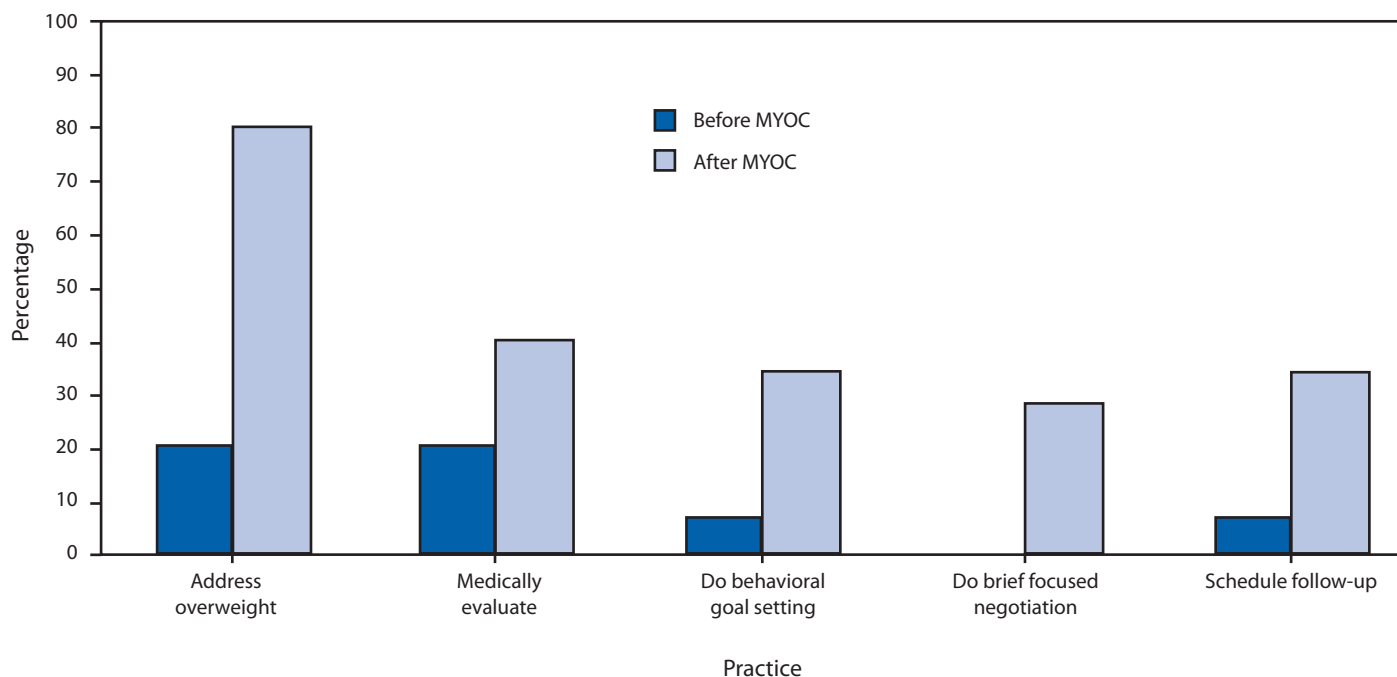
In 2006, a group of local businesses and health-care leaders in Portland, Maine, formed a unique profit/nonprofit partnership called Let’s Go! that used lessons learned and tools and resources developed in MYOC to take the 5-2-1-0 message to additional settings: schools, child-care centers, communities, workplaces, after-school programs, and health-care settings.** The core principles of Let’s Go! affirm that 1) environmental and policy changes influence behavior change, 2) interconnectivity across sectors is essential, and 3) strategies should be evidence-based and continuously evaluated. Let’s Go! has a robust evaluation plan that focuses on qualitative and quantitative data. Because changes in obesity rates take years, progress is tracked through environmental and policy changes as well as behavioral data as precursors to changes in population weight status (Figure 3). Parents already are more likely able to identify all four healthy behaviors correctly, and a 27% increase in perceived behavior change was observed among children in three of four of the 5-2-1-0 targeted behaviors. Let’s Go! has begun to expand statewide, and by June 2010, involved nearly 85,000 students in 262 schools, 40 child-care sites caring for thousands of children, approximately 50 physician practices, numerous after-school programs supporting approximately 2,500 youths, six of Portland’s largest employers, and eight regions across Maine. Since June 2010, Let’s Go! has been disseminated statewide to seven additional regions in Maine.

Other initiatives. The efforts already under way for obesity prevention and control are further strengthened by Let’s Move, the First Lady’s initiative to end childhood obesity in a generation, by empowering parents, encouraging healthier foods in

¶ Additional information available at <http://www.letsmove.gov/resources/MYOC.php>.

** Additional information available at <http://www.letsmove.gov>.

FIGURE 3. Percentage of clinicians reporting that they “strongly agreed” with the use of selected practices to counter childhood obesity among their patients, before and after implementation of the Maine Youth Overweight Collaborative (MYOC) — Maine, 2004–2006



schools, increasing physical activity, and increasing access to affordable healthy foods.^{††} Let’s Move includes establishment of the intergovernmental Childhood Obesity Task Force and, in the U.S. Department of Health and Human Services, a Healthy Weight Task Force is developing broad approaches in multiple sectors. Other key programs include those instituted by the Convergence Partnership and programs initiated by CDC with funds from the American Recovery and Reimbursement Act of 2009.

Summary

Policy and environmental interventions show early evidence of improving environments that will lead to lower rates of obesity. Nonetheless, more studies of impact and effectiveness are needed, as are identification and evaluation of promising approaches from around the country. The high visibility accorded to childhood obesity by the Let’s Move initiative and the funding provided to states and communities through the American Recovery and Reinvestment Act provide unparalleled opportunities to reverse the obesity epidemic.

Reported by

J Bell, MPA, PolicyLink, Oakland, California. VW Rogers, MD, Barbara Bush Children’s Hospital, Maine Medical Center,

Portland, Maine. WH Dietz, MD, PhD, Div of Nutrition, Physical Activity, and Obesity, National Center for Chronic Disease Prevention and Health Promotion; CL Ogden, PhD, Div of Health and Nutrition Examination Surveys, National Center for Health Statistics; C Schuler, PhD, Div of Respiratory Disease Studies, National Institute for Occupational Safety and Health; T Popovic, MD, PhD, Office of the Director, CDC.

References

- Ogden CL, Carroll MD, Curtin LR, Lamb MM, Flegal KM. Prevalence of high body mass index in US children and adolescents, 2007–2008. *JAMA* 2010;303:242–9.
- Freedman DS, Mei Z, Srinivasan SR, Berenson GS, Dietz WH. Cardiovascular risk factors and excess adiposity among overweight children and adolescents: The Bogalusa Heart Study. *J Pediatr* 2007;150:12–7.
- SEARCH for Diabetes in Youth Study Group. The burden of diabetes mellitus among US youth: prevalence estimates from the SEARCH for Diabetes in Youth Study. *Pediatrics* 2006;118:1510–8.
- Flegal KM, Carroll MD, Ogden CL, et al. Prevalence and trends in obesity among US adults, 1999–2008. *JAMA* 2010;303:235–41.
- Ogden CL, Fryar CD, Carroll MD, Flegal KM. Mean body weight, height, and body mass index, United States 1960–2002. *Adv Data* 2004;347:1–17.
- Finkelstein EA, Trogdon JG, Cohen JW, Dietz W. Annual medical spending attributable to obesity: payer- and service-specific estimates. *Health Aff (Millwood)* 2009;28:w822–31.
- Harder T, Bergmann R, Kallschnigg G, Plagemann. Duration of breastfeeding and risk of overweight: a meta-analysis. *Am J Epidemiol* 2005;162:397–403.

^{††} Additional information available at <http://www.letsmove.gov>.

8. CDC. Racial and ethnic differences in breastfeeding initiation and duration by state—National Immunization Survey, United States, 2004–2008. *MMWR* 2010;59:327–34.
9. Philipp BL, Merewood A, Miller LW, et al. Baby-friendly hospital initiative improves breastfeeding initiation rates in a US hospital setting. *Pediatrics* 2001;108:677–81.
10. The Keystone Forum on Away-from-Home Foods. Opportunities for preventing weight gain and obesity. Washington, DC: The Keystone Center; 2006.
11. Gutin B, Barbeau P, Owens S, et al. Effects of exercise intensity on cardiovascular fitness, total body composition, and visceral adiposity in obese adolescents. *Am J Clin Nutr* 2002;75:818–26.
12. CDC. Guidelines for school health programs to promote lifelong healthy eating. *MMWR* 1996;45(No. RR-9).
13. US Department of Health and Human Services, US Department of Agriculture. Dietary guidelines for Americans. Washington DC: US Government Printing Office; 2005. Available at <http://www.healthierus.gov/dietaryguidelines>. Accessed January 18, 2011.
14. Foster GD, Sherman S, Borradaile KE, et al. A policy-based school intervention to prevent overweight and obesity. *Pediatrics* 2008;121:e794–802.
15. Economic Research Service, US Department of Agriculture. Access to affordable and nutritious food. Measuring and understanding food deserts and their consequences: report to Congress. Washington, DC: US Department of Agriculture; 2009. Available at <http://www.ers.usda.gov/publications/ap/ap036>. Accessed January 13, 2011.
16. Karpyn A, Manon M, Treuhaft S, Giang T, Harries C, McCoubrey K. Policy solutions to the 'grocery gap'. *Health Aff (Millwood)* 2010;29:473–80.

Announcement

Environmental Public Health Tracking 101

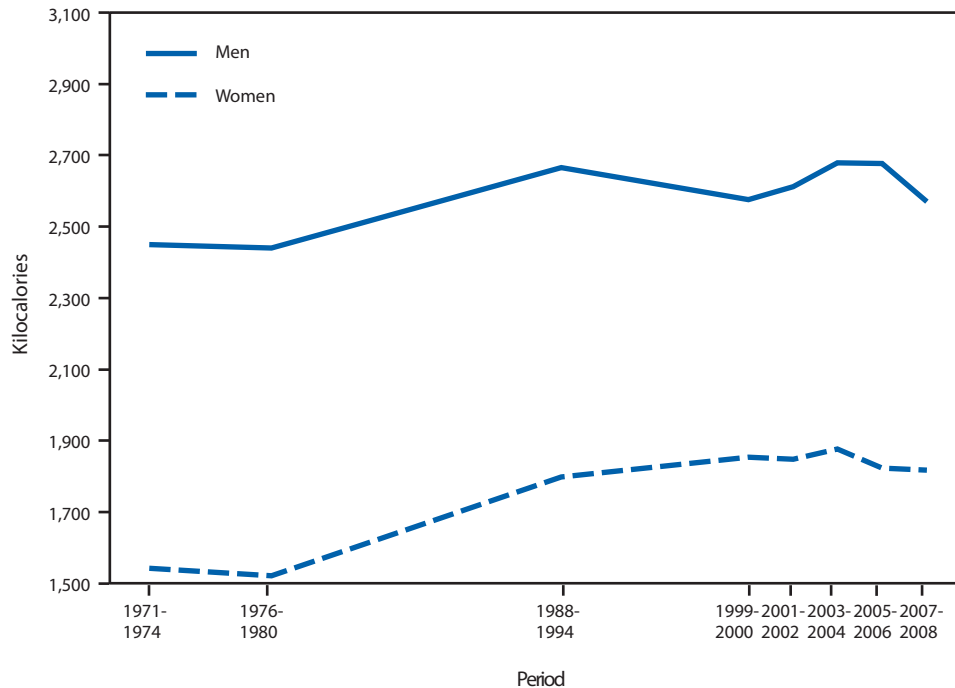
A new CDC online course, Environmental Public Health Tracking 101, provides an overview of the major components of environmental public health tracking. The course is divided into 12 modules within three sections. Topics include how to use the National Environmental Public Health Tracking Network (<http://www.cdc.gov/ephtracking>), surveillance and epidemiology, types of tracking data, and geographic information systems.

The online course is available at <http://www.nehacert.org>. The course can be accessed by entering “Tracking 101” in the search box. Continuing education credit is available at no charge for nurses, health educators, and other health professionals.

QuickStats

FROM THE NATIONAL CENTER FOR HEALTH STATISTICS

Age-Adjusted Daily Kilocalorie Intake Among Adults Aged 20–74 Years, by Sex — National Health and Nutrition Examination Survey, United States, 1971–2008*



* Based on responses to a series of questions in the 24-hour dietary recall interview of the National Health and Nutrition Examination Surveys.

The average daily kilocalorie intake for men increased from the survey period 1971–1974 to 1988–1994 and then leveled off through 2007–2008. For women, the average daily kilocalorie intake increased from 1971–1974 to 1999–2000 and remained relatively stable through 2007–2008. From 1971–1974 to 2007–2008, men consumed more kilocalories on a daily basis than women.

Sources: Wright JD, Wang CY. Trends in intake of energy and macronutrients in adults from 1999–2000 through 2007–2008. NCHS Data Brief no. 49. Available at <http://www.cdc.gov/nchs/data/databriefs/db49.htm>.

CDC. Trends in intake of energy and macronutrients — United States, 1971–2000. MMWR 2004;53:79–82.

Notifiable Diseases and Mortality Tables

TABLE I. Provisional cases of infrequently reported notifiable diseases (<1,000 cases reported during the preceding year) — United States, week ending January 15, 2011 (2nd week)*

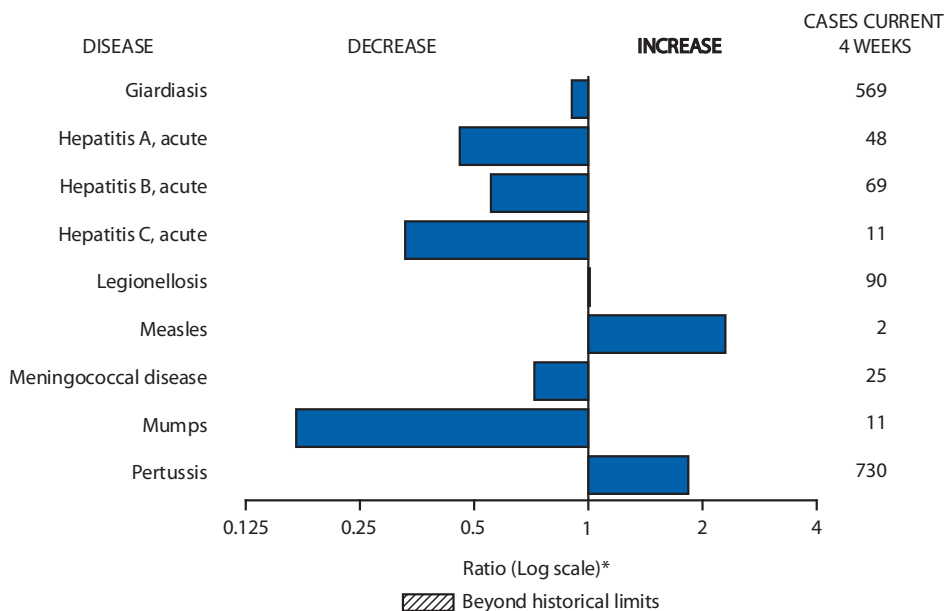
Disease	Current week	Cum 2011	5-year weekly average [†]	Total cases reported for previous years					States reporting cases during current week (No.)
				2010	2009	2008	2007	2006	
Anthrax	—	—	—	—	1	—	1	1	
Arboviral diseases ^{§,¶} :									
California serogroup virus disease	—	—	—	—	55	62	55	67	
Eastern equine encephalitis virus disease	—	—	—	—	4	4	4	8	
Powassan virus disease	—	—	0	—	6	2	7	1	
St. Louis encephalitis virus disease	—	—	0	—	12	13	9	10	
Western equine encephalitis virus disease	—	—	—	—	—	—	—	—	
Babesiosis	—	—	—	NN	NN	NN	NN	NN	
Botulism, total	—	1	3	108	118	145	144	165	
foodborne	—	—	0	7	10	17	32	20	
infant	—	1	2	76	83	109	85	97	
other (wound and unspecified)	—	—	0	25	25	19	27	48	
Brucellosis	2	3	2	127	115	80	131	121	OH (1), FL (1)
Chancroid	—	1	1	37	28	25	23	33	
Cholera	—	1	0	10	10	5	7	9	
Cyclosporiasis [§]	—	1	4	170	141	139	93	137	
Diphtheria	—	—	—	—	—	—	—	—	
<i>Haemophilus influenzae</i> ,** invasive disease (age <5 yrs):									
serotype b	—	—	1	16	35	30	22	29	
nonsertotype b	—	—	5	151	236	244	199	175	
unknown serotype	2	10	5	263	178	163	180	179	CA (2)
Hansen disease [§]	1	1	1	57	103	80	101	66	CA (1)
Hantavirus pulmonary syndrome [§]	—	—	1	17	20	18	32	40	
Hemolytic uremic syndrome, postdiarrheal [§]	1	3	5	218	242	330	292	288	CA (1)
Influenza-associated pediatric mortality ^{§,††}	3	6	2	61	358	90	77	43	TX (1), ND (1), GA (1)
Listeriosis	1	6	18	758	851	759	808	884	TN (1)
Measles ^{§§}	—	—	1	57	71	140	43	55	
Meningococcal disease, invasive ^{¶¶} :									
A, C, Y, and W-135	—	1	6	240	301	330	325	318	
serogroup B	—	—	4	109	174	188	167	193	
other serogroup	—	—	1	9	23	38	35	32	
unknown serogroup	3	15	13	410	482	616	550	651	NYC (1), NE (1), AZ (1)
Novel influenza A virus infections***	—	—	0	443,774	—	2	4	NN	
Plague	—	—	0	2	8	3	7	17	
Poliomyelitis, paralytic	—	—	0	—	1	—	—	—	
Polio virus Infection, nonparalytic [§]	—	—	—	—	—	—	—	NN	
Psittacosis [§]	—	—	0	4	9	8	12	21	
Q fever, total [§]	—	2	3	119	113	120	171	169	
acute	—	2	2	90	93	106	—	—	
chronic	—	—	0	29	20	14	—	—	
Rabies, human	—	—	0	1	4	2	1	3	
Rubella ^{†††}	—	—	0	6	3	16	12	11	
Rubella, congenital syndrome	—	—	—	—	2	—	—	1	
SARS-CoV [§]	—	—	—	—	—	—	—	—	
Smallpox [§]	—	—	—	—	—	—	—	—	
Streptococcal toxic-shock syndrome [§]	—	2	4	156	161	157	132	125	
Syphilis, congenital (age <1 yr) ^{§§§}	—	—	8	228	423	431	430	349	
Tetanus	—	—	0	8	18	19	28	41	
Toxic-shock syndrome (staphylococcal) [§]	—	1	2	75	74	71	92	101	
Trichinellosis	1	2	0	4	13	39	5	15	OH (1)
Tularemia	—	—	1	110	93	123	137	95	
Typhoid fever	—	1	10	414	397	449	434	353	
Vancomycin-intermediate <i>Staphylococcus aureus</i> [§]	1	2	1	89	78	63	37	6	LA (1)
Vancomycin-resistant <i>Staphylococcus aureus</i> [§]	—	—	0	1	1	—	2	1	
Vibriosis (noncholera <i>Vibrio</i> species infections) [§]	—	1	8	766	789	588	549	NN	
Viral hemorrhagic fever ^{¶¶¶}	—	—	0	1	NN	NN	NN	NN	
Yellow fever	—	—	—	—	—	—	—	—	

See Table 1 footnotes on next page.

TABLE I. (Continued) Provisional cases of infrequently reported notifiable diseases (<1,000 cases reported during the preceding year) — United States, week ending January 15, 2011 (2nd week)*

—: No reported cases. N: Not reportable. NN: Not Nationally Notifiable Cum: Cumulative year-to-date counts.
 * Case counts for reporting years 2010 and 2011 are provisional and subject to change. For further information on interpretation of these data, see <http://www.cdc.gov/ncphi/diss/nndss/phs/files/ProvisionalNationa%20NotifiableDiseasesSurveillanceData20100927.pdf>.
 † Calculated by summing the incidence counts for the current week, the 2 weeks preceding the current week, and the 2 weeks following the current week, for a total of 5 preceding years. Additional information is available at <http://www.cdc.gov/ncphi/diss/nndss/phs/files/5yearweeklyaverage.pdf>.
 ‡ Not reportable in all states. Data from states where the condition is not reportable are excluded from this table except starting in 2007 for the arboviral diseases, STD data, TB data, and influenza-associated pediatric mortality, and in 2003 for SARS-CoV. Reporting exceptions are available at <http://www.cdc.gov/ncphi/diss/nndss/phs/infdis.htm>.
 § Includes both neuroinvasive and nonneuroinvasive. Updated weekly from reports to the Division of Vector-Borne Infectious Diseases, National Center for Zoonotic, Vector-Borne, and Enteric Diseases (ArboNET Surveillance). Data for West Nile virus are available in Table II.
 ** Data for H. influenzae (all ages, all serotypes) are available in Table II.
 †† Updated weekly from reports to the Influenza Division, National Center for Immunization and Respiratory Diseases. Since October 3, 2010, 10 influenza-associated pediatric death occurred during the 2010-11 influenza season. Since August 30, 2009, a total of 282 influenza-associated pediatric deaths occurring during the 2009-10 influenza season have been reported.
 ‡‡ No measles cases were reported for the current week.
 ¶¶ Data for meningococcal disease (all serogroups) are available in Table II.
 *** CDC discontinued reporting of individual confirmed and probable cases of 2009 pandemic influenza A (H1N1) virus infections on July 24, 2009. During 2009, four cases of human infection with novel influenza A viruses, different from the 2009 pandemic influenza A (H1N1) strain, were reported to CDC. The four cases of novel influenza A virus infection reported to CDC during 2010 were identified as swine influenza A (H3N2) virus and are unrelated to the 2009 pandemic influenza A (H1N1) virus. Total case counts for 2009 were provided by the Influenza Division, National Center for Immunization and Respiratory Diseases (NCIRD).
 ††† No rubella cases were reported for the current week.
 §§§ Updated weekly from reports to the Division of STD Prevention, National Center for HIV/AIDS, Viral Hepatitis, STD, and TB Prevention.
 ¶¶¶ There was one case of viral hemorrhagic fever reported during week 12 of 2010. The one case report was confirmed as lassa fever. See Table II for dengue hemorrhagic fever.

FIGURE I. Selected notifiable disease reports, United States, comparison of provisional 4-week totals January 15, 2011, with historical data



* Ratio of current 4-week total to mean of 15 4-week totals (from previous, comparable, and subsequent 4-week periods for the past 5 years). The point where the hatched area begins is based on the mean and two standard deviations of these 4-week totals.

Notifiable Disease Data Team and 122 Cities Mortality Data Team
 Patsy A. Hall-Baker
 Deborah A. Adams Rosaline Dhara
 Willie J. Anderson Pearl C. Sharp
 Michael S. Wodajo Lenee Blanton

Morbidity and Mortality Weekly Report

TABLE II. Provisional cases of selected notifiable diseases, United States, weeks ending January 15, 2011, and January 16, 2010 (2nd week)*

Reporting area	<i>Chlamydia trachomatis</i> infection					Coccidioidomycosis					Cryptosporidiosis				
	Current week	Previous 52 weeks		Cum 2011	Cum 2010	Current week	Previous 52 weeks		Cum 2011	Cum 2010	Current week	Previous 52 weeks		Cum 2011	Cum 2010
		Med	Max				Med	Max				Med	Max		
United States	9,996	23,905	26,317	24,535	45,279	119	0	262	381	NN	44	118	344	96	253
New England	547	781	1,211	1,082	1,122	—	0	0	—	NN	—	7	19	—	87
Connecticut	—	177	402	—	64	—	0	0	—	NN	—	0	0	—	71
Maine [§]	—	50	100	—	92	—	0	0	—	NN	—	1	7	—	4
Massachusetts	485	402	693	916	748	—	0	0	—	NN	—	3	9	—	6
New Hampshire	36	49	113	64	82	—	0	0	—	NN	—	1	5	—	2
Rhode Island [§]	—	66	120	47	97	—	0	0	—	NN	—	0	2	—	—
Vermont [§]	26	23	51	55	39	—	0	0	—	NN	—	1	5	—	4
Mid. Atlantic	1,676	3,354	5,073	3,025	5,781	—	0	0	—	NN	7	15	38	12	21
New Jersey	343	509	680	721	878	—	0	0	—	NN	—	0	4	—	1
New York (Upstate)	501	696	1,342	790	586	—	0	0	—	NN	1	4	13	1	2
New York City	—	1,216	2,768	—	2,640	—	0	0	—	NN	—	2	6	—	3
Pennsylvania	832	946	1,092	1,514	1,677	—	0	0	—	NN	6	8	26	11	15
E.N. Central	1,304	3,511	3,980	3,112	7,381	—	0	0	—	NN	11	29	122	31	56
Illinois	18	770	1,031	232	2,015	—	0	0	—	NN	—	4	21	1	11
Indiana	—	366	797	—	374	—	0	0	—	NN	—	3	10	1	6
Michigan	940	946	1,419	1,751	2,104	—	0	0	—	NN	2	5	18	6	14
Ohio	169	991	1,109	707	2,055	—	0	0	—	NN	9	7	24	23	11
Wisconsin	177	427	514	422	833	—	0	0	—	NN	—	9	57	—	14
W.N. Central	149	1,383	1,556	645	2,767	—	0	0	—	NN	2	21	83	8	16
Iowa	10	202	237	146	479	—	0	0	—	NN	—	4	24	—	6
Kansas	—	189	235	53	395	—	0	0	—	NN	—	2	9	—	3
Minnesota	—	280	348	1	643	—	0	0	—	NN	—	0	16	—	—
Missouri	127	505	620	312	880	—	0	0	—	NN	2	4	30	4	5
Nebraska [§]	—	97	173	56	202	—	0	0	—	NN	—	3	26	4	2
North Dakota	—	28	79	—	36	—	0	0	—	NN	—	0	9	—	—
South Dakota	12	62	78	77	132	—	0	0	—	NN	—	1	6	—	—
S. Atlantic	2,655	4,737	5,653	6,864	8,732	—	0	0	—	NN	21	18	51	31	21
Delaware	50	85	220	133	156	—	0	0	—	NN	—	0	1	—	—
District of Columbia	—	91	177	76	126	—	0	0	—	NN	—	0	1	—	—
Florida	620	1,460	1,708	1,668	2,649	—	0	0	—	NN	13	7	19	19	8
Georgia	—	610	1,217	—	489	—	0	0	—	NN	5	5	31	7	10
Maryland [§]	405	469	804	735	443	—	0	0	—	NN	2	1	3	2	1
North Carolina	466	759	1,563	1,835	2,249	—	0	0	—	NN	—	0	12	—	—
South Carolina [§]	334	535	847	658	1,038	—	0	0	—	NN	1	1	8	1	1
Virginia [§]	704	597	882	1,561	1,483	—	0	0	—	NN	—	2	8	2	—
West Virginia	76	74	122	198	99	—	0	0	—	NN	—	0	3	—	1
E.S. Central	480	1,753	2,416	1,475	2,747	—	0	0	—	NN	1	4	19	2	8
Alabama [§]	426	533	792	867	933	—	0	0	—	NN	—	2	13	—	—
Kentucky	54	269	614	54	326	—	0	0	—	NN	—	1	6	1	2
Mississippi	—	377	780	230	441	—	0	0	—	NN	—	0	2	—	3
Tennessee [§]	—	566	796	324	1,047	—	0	0	—	NN	1	1	5	1	3
W.S. Central	1,171	3,003	4,310	2,892	7,672	—	0	0	—	NN	—	7	29	—	2
Arkansas [§]	233	275	391	570	536	—	0	0	—	NN	—	0	3	—	—
Louisiana	642	310	824	1,030	1,474	—	0	0	—	NN	—	1	6	—	—
Oklahoma	296	251	1,374	299	1,403	—	0	0	—	NN	—	1	8	—	—
Texas [§]	—	2,273	3,183	993	4,259	—	0	0	—	NN	—	4	22	—	2
Mountain	677	1,438	1,913	1,379	2,237	87	0	208	295	NN	—	10	30	5	22
Arizona	301	509	706	388	503	87	0	207	294	NN	—	0	3	—	2
Colorado	—	336	560	185	735	—	0	0	—	NN	—	2	8	1	2
Idaho [§]	—	69	200	—	118	—	0	0	—	NN	—	2	7	3	3
Montana [§]	23	60	82	73	94	—	0	0	—	NN	—	1	4	—	3
Nevada [§]	171	175	329	368	296	—	0	0	—	NN	—	0	7	—	1
New Mexico [§]	182	150	274	293	71	—	0	0	—	NN	—	2	12	1	6
Utah	—	119	175	72	344	—	0	1	1	NN	—	1	5	—	3
Wyoming [§]	—	40	90	—	76	—	0	0	—	NN	—	0	2	—	2
Pacific	1,337	3,695	4,557	4,061	6,840	32	0	54	86	NN	2	12	28	7	20
Alaska	—	112	148	103	260	—	0	0	—	NN	—	0	1	—	1
California	846	2,766	3,568	2,985	5,225	32	0	54	86	NN	2	6	18	4	14
Hawaii	—	112	158	—	256	—	0	0	—	NN	—	0	1	—	—
Oregon	169	212	496	354	310	—	0	0	—	NN	—	3	13	3	5
Washington	322	406	661	619	789	—	0	0	—	NN	—	1	6	—	—
Territories															
American Samoa	—	0	0	—	—	—	0	0	—	NN	N	0	0	N	NN
C.N.M.I.	—	—	—	—	—	—	—	—	—	NN	—	—	—	—	—
Guam	—	8	31	—	—	—	0	0	—	NN	—	0	0	—	—
Puerto Rico	—	92	265	116	168	—	0	0	—	NN	N	0	0	N	NN
U.S. Virgin Islands	—	12	29	—	12	—	0	0	—	NN	—	0	0	—	—

C.N.M.I.: Commonwealth of Northern Mariana Islands.

U: Unavailable. —: No reported cases. N: Not reportable. NN: Not Nationally Notifiable. Cum: Cumulative year-to-date counts. Med: Median. Max: Maximum.

* Case counts for reporting year 2010 and 2011 are provisional and subject to change. For further information on interpretation of these data, see <http://www.cdc.gov/ncphi/diss/nndss/phs/files/ProvisionalNationa%20NotifiableDiseasesSurveillanceData20100927.pdf>. Data for TB are displayed in Table IV, which appears quarterly.

† Contains data reported through the National Electronic Disease Surveillance System (NEDSS).

Morbidity and Mortality Weekly Report

TABLE II. (Continued) Provisional cases of selected notifiable diseases, United States, weeks ending January 15, 2011, and January 16, 2010 (2nd week)*

Reporting area	Dengue Virus Infection									
	Dengue Fever [†]					Dengue Hemorrhagic Fever [§]				
	Current week	Previous 52 weeks		Cum 2011	Cum 2010	Current week	Previous 52 weeks		Cum 2011	Cum 2010
	Med	Max				Med	Max			
United States	—	0	8	—	16	—	0	0	—	—
New England	—	0	0	—	—	—	0	0	—	—
Connecticut	—	0	0	—	—	—	0	0	—	—
Maine [¶]	—	0	0	—	—	—	0	0	—	—
Massachusetts	—	0	0	—	—	—	0	0	—	—
New Hampshire	—	0	0	—	—	—	0	0	—	—
Rhode Island [¶]	—	0	0	—	—	—	0	0	—	—
Vermont [¶]	—	0	0	—	—	—	0	0	—	—
Mid. Atlantic	—	0	2	—	7	—	0	0	—	—
New Jersey	—	0	0	—	—	—	0	0	—	—
New York (Upstate)	—	0	0	—	—	—	0	0	—	—
New York City	—	0	2	—	7	—	0	0	—	—
Pennsylvania	—	0	0	—	—	—	0	0	—	—
E.N. Central	—	0	1	—	3	—	0	0	—	—
Illinois	—	0	0	—	1	—	0	0	—	—
Indiana	—	0	0	—	—	—	0	0	—	—
Michigan	—	0	0	—	—	—	0	0	—	—
Ohio	—	0	1	—	2	—	0	0	—	—
Wisconsin	—	0	0	—	—	—	0	0	—	—
W.N. Central	—	0	0	—	—	—	0	0	—	—
Iowa	—	0	0	—	—	—	0	0	—	—
Kansas	—	0	0	—	—	—	0	0	—	—
Minnesota	—	0	0	—	—	—	0	0	—	—
Missouri	—	0	0	—	—	—	0	0	—	—
Nebraska [¶]	—	0	0	—	—	—	0	0	—	—
North Dakota	—	0	0	—	—	—	0	0	—	—
South Dakota	—	0	0	—	—	—	0	0	—	—
S. Atlantic	—	0	2	—	2	—	0	0	—	—
Delaware	—	0	0	—	—	—	0	0	—	—
District of Columbia	—	0	0	—	—	—	0	0	—	—
Florida	—	0	2	—	2	—	0	0	—	—
Georgia	—	0	0	—	—	—	0	0	—	—
Maryland [¶]	—	0	0	—	—	—	0	0	—	—
North Carolina	—	0	0	—	—	—	0	0	—	—
South Carolina [¶]	—	0	0	—	—	—	0	0	—	—
Virginia [¶]	—	0	0	—	—	—	0	0	—	—
West Virginia	—	0	0	—	—	—	0	0	—	—
E.S. Central	—	0	0	—	—	—	0	0	—	—
Alabama [¶]	—	0	0	—	—	—	0	0	—	—
Kentucky	—	0	0	—	—	—	0	0	—	—
Mississippi	—	0	0	—	—	—	0	0	—	—
Tennessee [¶]	—	0	0	—	—	—	0	0	—	—
W.S. Central	—	0	0	—	—	—	0	0	—	—
Arkansas [¶]	—	0	0	—	—	—	0	0	—	—
Louisiana	—	0	0	—	—	—	0	0	—	—
Oklahoma	—	0	0	—	—	—	0	0	—	—
Texas [¶]	—	0	0	—	—	—	0	0	—	—
Mountain	—	0	1	—	1	—	0	0	—	—
Arizona	—	0	0	—	—	—	0	0	—	—
Colorado	—	0	0	—	—	—	0	0	—	—
Idaho [¶]	—	0	0	—	—	—	0	0	—	—
Montana [¶]	—	0	0	—	—	—	0	0	—	—
Nevada [¶]	—	0	1	—	1	—	0	0	—	—
New Mexico [¶]	—	0	0	—	—	—	0	0	—	—
Utah	—	0	0	—	—	—	0	0	—	—
Wyoming [¶]	—	0	0	—	—	—	0	0	—	—
Pacific	—	0	2	—	3	—	0	0	—	—
Alaska	—	0	0	—	—	—	0	0	—	—
California	—	0	0	—	1	—	0	0	—	—
Hawaii	—	0	0	—	—	—	0	0	—	—
Oregon	—	0	0	—	—	—	0	0	—	—
Washington	—	0	2	—	2	—	0	0	—	—
Territories										
American Samoa	—	0	0	—	—	—	0	0	—	—
C.N.M.I.	—	—	—	—	—	—	—	—	—	—
Guam	—	0	0	—	—	—	0	0	—	—
Puerto Rico	—	0	69	—	169	—	0	1	—	4
U.S. Virgin Islands	—	0	0	—	—	—	0	0	—	—

C.N.M.I.: Commonwealth of Northern Mariana Islands.

U: Unavailable. —: No reported cases. N: Not reportable. NN: Not Nationally Notifiable. Cum: Cumulative year-to-date counts. Med: Median. Max: Maximum.

* Case counts for reporting year 2010 and 2011 are provisional and subject to change. For further information on interpretation of these data, see <http://www.cdc.gov/ncphi/diss/ndss/pdfs/files/ProvisionalNationalNotifiableDiseasesSurveillanceData20100927.pdf>. Data for TB are displayed in Table IV, which appears quarterly.

[†] Dengue Fever includes cases that meet criteria for Dengue Fever with hemorrhage, other clinical and unknown case classifications.

[§] DHF includes cases that meet criteria for dengue shock syndrome (DSS), a more severe form of DHF.

[¶] Contains data reported through the National Electronic Disease Surveillance System (NEDSS).

Morbidity and Mortality Weekly Report

TABLE II. (Continued) Provisional cases of selected notifiable diseases, United States, weeks ending January 15, 2011, and January 16, 2010 (2nd week)*

Reporting area	Ehrlichiosis/Anaplasmosis [†]														
	<i>Ehrlichia chaffeensis</i>				<i>Anaplasma phagocytophilum</i>				Undetermined						
	Current week	Previous 52 weeks		Cum 2011	Cum 2010	Current week	Previous 52 weeks		Cum 2011	Cum 2010	Current week	Previous 52 weeks		Cum 2011	Cum 2010
	Med	Max				Med	Max				Med	Max			
United States	—	8	47	1	3	1	11	56	1	2	—	1	10	1	—
New England	—	0	1	—	—	—	1	8	—	1	—	0	2	—	—
Connecticut	—	0	0	—	—	—	0	5	—	—	—	0	2	—	—
Maine [§]	—	0	1	—	—	—	0	2	—	1	—	0	0	—	—
Massachusetts	—	0	0	—	—	—	0	0	—	—	—	0	0	—	—
New Hampshire	—	0	1	—	—	—	0	3	—	—	—	0	1	—	—
Rhode Island [§]	—	0	0	—	—	—	0	5	—	—	—	0	0	—	—
Vermont [§]	—	0	0	—	—	—	0	0	—	—	—	0	0	—	—
Mid. Atlantic	—	1	5	—	—	1	4	12	1	—	—	0	1	—	—
New Jersey	—	0	0	—	—	—	0	1	—	—	—	0	0	—	—
New York (Upstate)	—	0	5	—	—	1	4	12	1	—	—	0	1	—	—
New York City	—	0	3	—	—	—	0	1	—	—	—	0	0	—	—
Pennsylvania	—	0	1	—	—	—	0	0	—	—	—	0	0	—	—
E.N. Central	—	0	4	—	—	—	4	39	—	—	—	1	7	1	—
Illinois	—	0	2	—	—	—	0	2	—	—	—	0	2	—	—
Indiana	—	0	0	—	—	—	0	0	—	—	—	0	3	1	—
Michigan	—	0	1	—	—	—	0	0	—	—	—	0	1	—	—
Ohio	—	0	3	—	—	—	0	1	—	—	—	0	0	—	—
Wisconsin	—	0	1	—	—	—	4	39	—	—	—	0	4	—	—
W.N. Central	—	1	13	—	—	—	0	3	—	—	—	0	3	—	—
Iowa	—	0	0	—	—	—	0	0	—	—	—	0	0	—	—
Kansas	—	0	1	—	—	—	0	0	—	—	—	0	0	—	—
Minnesota	—	0	0	—	—	—	0	0	—	—	—	0	0	—	—
Missouri	—	1	13	—	—	—	0	3	—	—	—	0	3	—	—
Nebraska [§]	—	0	1	—	—	—	0	0	—	—	—	0	0	—	—
North Dakota	—	0	0	—	—	—	0	0	—	—	—	0	0	—	—
South Dakota	—	0	0	—	—	—	0	0	—	—	—	0	0	—	—
S. Atlantic	—	3	19	1	3	—	1	7	—	1	—	0	2	—	—
Delaware	—	0	3	—	—	—	0	1	—	—	—	0	0	—	—
District of Columbia	—	0	0	—	—	—	0	0	—	—	—	0	0	—	—
Florida	—	0	2	—	1	—	0	1	—	—	—	0	0	—	—
Georgia	—	0	4	1	1	—	0	1	—	1	—	0	1	—	—
Maryland [§]	—	0	3	—	1	—	0	2	—	—	—	0	2	—	—
North Carolina	—	1	13	—	—	—	0	4	—	—	—	0	0	—	—
South Carolina [§]	—	0	2	—	—	—	0	1	—	—	—	0	0	—	—
Virginia [§]	—	1	8	—	—	—	0	2	—	—	—	0	1	—	—
West Virginia	—	0	1	—	—	—	0	0	—	—	—	0	0	—	—
E.S. Central	—	0	10	—	—	—	0	2	—	—	—	0	1	—	—
Alabama [§]	—	0	3	—	—	—	0	2	—	—	—	0	0	—	—
Kentucky	—	0	2	—	—	—	0	0	—	—	—	0	0	—	—
Mississippi	—	0	1	—	—	—	0	1	—	—	—	0	0	—	—
Tennessee [§]	—	0	6	—	—	—	0	2	—	—	—	0	1	—	—
W.S. Central	—	0	5	—	—	—	0	2	—	—	—	0	1	—	—
Arkansas [§]	—	0	5	—	—	—	0	2	—	—	—	0	0	—	—
Louisiana	—	0	1	—	—	—	0	0	—	—	—	0	0	—	—
Oklahoma	—	0	5	—	—	—	0	1	—	—	—	0	0	—	—
Texas [§]	—	0	1	—	—	—	0	1	—	—	—	0	1	—	—
Mountain	—	0	0	—	—	—	0	0	—	—	—	0	0	—	—
Arizona	—	0	0	—	—	—	0	0	—	—	—	0	0	—	—
Colorado	—	0	0	—	—	—	0	0	—	—	—	0	0	—	—
Idaho [§]	—	0	0	—	—	—	0	0	—	—	—	0	0	—	—
Montana [§]	—	0	0	—	—	—	0	0	—	—	—	0	0	—	—
Nevada [§]	—	0	0	—	—	—	0	0	—	—	—	0	0	—	—
New Mexico [§]	—	0	0	—	—	—	0	0	—	—	—	0	0	—	—
Utah	—	0	0	—	—	—	0	0	—	—	—	0	0	—	—
Wyoming [§]	—	0	0	—	—	—	0	0	—	—	—	0	0	—	—
Pacific	—	0	1	—	—	—	0	0	—	—	—	0	1	—	—
Alaska	—	0	0	—	—	—	0	0	—	—	—	0	0	—	—
California	—	0	1	—	—	—	0	0	—	—	—	0	1	—	—
Hawaii	—	0	0	—	—	—	0	0	—	—	—	0	0	—	—
Oregon	—	0	0	—	—	—	0	0	—	—	—	0	0	—	—
Washington	—	0	0	—	—	—	0	0	—	—	—	0	0	—	—
Territories															
American Samoa	—	0	0	—	—	—	0	0	—	—	—	0	0	—	—
C.N.M.I.	—	—	—	—	—	—	—	—	—	—	—	—	—	—	—
Guam	—	0	0	—	—	—	0	0	—	—	—	0	0	—	—
Puerto Rico	—	0	0	—	—	—	0	0	—	—	—	0	0	—	—
U.S. Virgin Islands	—	0	0	—	—	—	0	0	—	—	—	0	0	—	—

C.N.M.I.: Commonwealth of Northern Mariana Islands.

U: Unavailable. —: No reported cases. N: Not reportable. NN: Not Nationally Notifiable. Cum: Cumulative year-to-date counts. Med: Median. Max: Maximum.

* Case counts for reporting year 2010 and 2011 are provisional and subject to change. For further information on interpretation of these data, see <http://www.cdc.gov/ncphi/diss/nndss/pubs/files/ProvisionalNationalNotifiableDiseasesSurveillanceData20100927.pdf>. Data for TB are displayed in Table IV, which appears quarterly.

† Cumulative total *E. ewingii* cases reported for year 2010 = 10 and 0 case reports for 2011.

§ Contains data reported through the National Electronic Disease Surveillance System (NEDSS).

Morbidity and Mortality Weekly Report

TABLE II. (Continued) Provisional cases of selected notifiable diseases, United States, weeks ending January 15, 2011, and January 16, 2010 (2nd week)*

Reporting area	Giardiasis					Gonorrhea					Haemophilus influenzae, invasive† All ages, all serotypes				
	Current week	Previous 52 weeks		Cum 2011	Cum 2010	Current week	Previous 52 weeks		Cum 2011	Cum 2010	Current week	Previous 52 weeks		Cum 2011	Cum 2010
		Med	Max				Med	Max				Med	Max		
United States	134	329	479	307	564	2,452	5,601	6,395	6,142	11,525	32	57	77	88	157
New England	1	32	54	5	50	44	100	196	90	125	1	3	9	1	9
Connecticut	—	5	13	—	12	—	39	169	—	17	—	0	6	—	—
Maine [§]	1	4	12	3	4	—	3	11	—	9	1	0	1	1	—
Massachusetts	—	13	25	—	25	42	47	80	84	74	—	2	5	—	7
New Hampshire	—	3	8	2	2	2	3	7	4	10	—	0	2	—	2
Rhode Island [§]	—	1	7	—	—	—	5	15	—	12	—	0	2	—	—
Vermont [§]	—	3	10	—	7	—	0	17	2	3	—	0	3	—	—
Mid. Atlantic	24	61	106	57	101	388	689	1,167	683	1,274	8	11	19	22	32
New Jersey	—	6	18	—	18	107	110	175	207	216	—	2	5	1	3
New York (Upstate)	14	22	54	16	21	90	108	203	126	106	2	3	9	2	6
New York City	1	17	33	20	28	—	234	531	—	499	—	2	6	2	5
Pennsylvania	9	15	27	21	34	191	255	366	350	453	6	4	11	17	18
E.N. Central	21	55	84	52	111	403	958	1,233	901	2,182	4	10	20	14	27
Illinois	—	11	26	—	24	4	190	278	67	529	—	3	7	1	10
Indiana	—	5	14	—	17	—	99	222	—	138	—	1	6	—	3
Michigan	8	13	25	14	23	297	254	471	519	685	1	0	3	3	—
Ohio	12	17	29	34	29	58	314	381	209	657	3	2	6	9	6
Wisconsin	1	8	32	4	18	44	94	155	106	173	—	2	5	1	8
W.N. Central	9	24	101	26	38	51	286	349	204	551	1	3	14	1	9
Iowa	3	5	11	7	13	1	33	57	31	80	—	0	1	—	—
Kansas	—	4	10	1	12	—	40	62	7	76	—	0	2	—	1
Minnesota	—	0	75	—	—	—	37	62	—	77	—	0	9	—	—
Missouri	3	8	26	11	5	50	141	181	135	255	1	2	4	1	7
Nebraska [§]	3	4	9	7	4	—	22	48	23	41	—	0	3	—	1
North Dakota	—	0	5	—	—	—	1	8	—	2	—	0	2	—	—
South Dakota	—	1	7	—	4	—	7	20	8	20	—	0	0	—	—
S. Atlantic	39	69	101	79	92	703	1,341	1,790	1,890	2,927	12	14	26	24	38
Delaware	—	0	5	—	1	12	19	48	35	26	—	0	1	—	—
District of Columbia	—	1	5	—	—	—	34	66	30	53	—	0	1	—	—
Florida	38	41	75	66	58	195	388	489	525	868	9	3	9	14	6
Georgia	—	6	51	—	9	—	205	392	—	160	—	3	9	6	13
Maryland [§]	—	5	11	4	8	104	133	217	221	133	2	1	5	2	2
North Carolina	N	0	0	N	N	159	245	596	586	976	—	2	9	—	6
South Carolina [§]	—	2	9	1	3	111	153	262	189	335	—	1	5	—	8
Virginia [§]	1	9	19	8	13	106	150	223	267	359	1	2	4	2	3
West Virginia	—	0	6	—	—	16	10	26	37	17	—	0	3	—	—
E.S. Central	1	5	12	1	7	143	469	697	466	833	2	3	10	12	12
Alabama [§]	1	4	11	1	3	127	158	246	292	294	2	0	4	6	—
Kentucky	N	0	0	N	N	16	73	142	16	75	—	1	3	2	2
Mississippi	N	0	0	N	N	—	111	216	80	153	—	0	2	—	—
Tennessee [§]	—	0	6	—	4	—	137	195	78	311	—	2	9	4	10
W.S. Central	1	7	14	2	14	370	833	1,298	829	2,206	—	2	10	1	4
Arkansas [§]	1	2	7	1	2	79	82	133	184	168	—	0	3	—	—
Louisiana	—	3	8	1	9	201	90	273	289	503	—	0	4	1	3
Oklahoma	—	0	5	—	3	90	74	332	91	389	—	1	7	—	1
Texas [§]	N	0	0	N	N	—	601	959	265	1,146	—	0	1	—	—
Mountain	10	31	51	22	53	125	178	235	281	236	2	5	15	6	22
Arizona	—	3	8	1	8	50	60	100	68	63	—	2	10	—	14
Colorado	7	13	27	15	12	—	54	95	47	93	—	1	5	1	2
Idaho [§]	3	4	9	6	9	—	2	14	—	8	2	0	2	2	—
Montana [§]	—	2	7	—	2	1	2	6	2	2	—	0	1	—	—
Nevada [§]	—	1	11	—	2	44	30	94	98	57	—	0	2	—	—
New Mexico [§]	—	2	5	—	—	30	21	35	65	7	—	1	3	3	6
Utah	—	4	11	—	13	—	5	15	1	6	—	0	4	—	—
Wyoming [§]	—	1	7	—	7	—	0	4	—	—	—	0	2	—	—
Pacific	28	53	80	63	98	225	605	815	798	1,191	2	2	21	7	4
Alaska	—	2	6	1	6	—	24	37	19	48	—	0	2	1	2
California	25	33	57	49	67	181	496	691	688	978	2	0	18	3	—
Hawaii	—	0	4	—	—	—	14	26	—	32	—	0	2	—	—
Oregon	3	9	20	13	21	9	19	34	23	38	—	1	5	3	2
Washington	—	9	25	—	4	35	53	83	68	95	—	0	2	—	—
Territories															
American Samoa	—	0	0	—	—	—	0	0	—	—	—	0	0	—	—
C.N.M.I.	—	—	—	—	—	—	—	—	—	—	—	—	—	—	—
Guam	—	0	1	—	—	—	0	5	—	—	—	0	0	—	—
Puerto Rico	—	1	8	—	—	—	5	14	4	2	—	0	1	—	—
U.S. Virgin Islands	—	0	0	—	—	—	3	7	—	3	—	0	0	—	—

C.N.M.I.: Commonwealth of Northern Mariana Islands.

U: Unavailable. —: No reported cases. N: Not reportable. NN: Not Nationally Notifiable. Cum: Cumulative year-to-date counts. Med: Median. Max: Maximum.

* Case counts for reporting year 2010 and 2011 are provisional and subject to change. For further information on interpretation of these data, see <http://www.cdc.gov/ncphi/diss/nndss/phps/files/ProvisionalNationa%20NotifiableDiseasesSurveillanceData20100927.pdf>. Data for TB are displayed in Table IV, which appears quarterly.

† Data for H. influenzae (age <5 yrs for serotype b, nonserotype b, and unknown serotype) are available in Table I.

§ Contains data reported through the National Electronic Disease Surveillance System (NEDSS).

Morbidity and Mortality Weekly Report

TABLE II. (Continued) Provisional cases of selected notifiable diseases, United States, weeks ending January 15, 2011, and January 16, 2010 (2nd week)*

Reporting area	Hepatitis (viral, acute), by type														
	A					B					C				
	Current week	Previous 52 weeks		Cum 2011	Cum 2010	Current week	Previous 52 weeks		Cum 2011	Cum 2010	Current week	Previous 52 weeks		Cum 2011	Cum 2010
	Med	Max				Med	Max				Med	Max			
United States	19	30	44	29	49	10	61	91	29	90	—	13	25	7	23
New England	—	2	5	—	5	—	1	5	1	3	—	1	4	—	4
Connecticut	—	0	3	—	2	—	0	2	—	2	—	0	4	—	1
Maine†	—	0	1	—	—	—	0	2	—	—	—	0	0	—	—
Massachusetts	—	1	5	—	3	—	0	2	—	1	—	0	2	—	3
New Hampshire	—	0	1	—	—	—	0	2	1	—	N	0	0	N	N
Rhode Island†	—	0	4	—	—	U	0	0	U	U	U	0	0	U	U
Vermont†	—	0	0	—	—	—	0	1	—	—	—	0	1	—	—
Mid. Atlantic	—	4	10	3	7	—	5	10	1	4	—	2	6	—	1
New Jersey	—	0	2	—	2	—	1	5	—	—	—	0	2	—	—
New York (Upstate)	—	1	4	—	—	—	1	6	—	—	—	1	4	—	1
New York City	—	1	7	1	3	—	1	4	—	2	—	0	1	—	—
Pennsylvania	—	1	4	2	2	—	1	5	1	2	—	0	3	—	—
E.N. Central	1	4	9	2	10	1	9	17	1	18	—	2	7	—	2
Illinois	—	1	3	—	1	—	2	5	—	5	—	0	1	—	—
Indiana	—	0	2	—	—	—	1	5	—	3	—	0	2	—	—
Michigan	—	1	5	—	3	—	3	6	—	5	—	1	6	—	2
Ohio	1	1	5	2	2	1	2	6	1	2	—	0	1	—	—
Wisconsin	—	0	3	—	4	—	2	8	—	3	—	0	2	—	—
W.N. Central	—	1	13	1	3	—	2	7	1	3	—	0	8	—	—
Iowa	—	0	3	1	1	—	0	2	—	—	—	0	0	—	—
Kansas	—	0	2	—	—	—	0	2	—	—	—	0	1	—	—
Minnesota	—	0	12	—	—	—	0	4	—	—	—	0	6	—	—
Missouri	—	0	2	—	1	—	1	3	—	2	—	0	2	—	—
Nebraska†	—	0	4	—	1	—	0	2	1	1	—	0	1	—	—
North Dakota	—	0	3	—	—	—	0	0	—	—	—	0	0	—	—
South Dakota	—	0	1	—	—	—	0	1	—	—	—	0	0	—	—
S. Atlantic	4	6	14	6	10	8	16	32	15	27	—	2	6	2	4
Delaware	—	0	1	—	—	—	0	2	—	1	U	0	0	U	U
District of Columbia	—	0	1	—	—	—	0	1	—	—	—	0	1	—	—
Florida	1	3	7	2	3	5	5	11	10	13	—	0	0	—	—
Georgia	1	1	3	2	2	—	3	7	—	9	—	0	2	—	—
Maryland†	2	0	3	2	—	1	1	6	2	—	—	0	3	2	2
North Carolina	—	0	5	—	—	—	1	16	—	2	—	1	3	—	2
South Carolina†	—	0	3	—	4	—	1	4	—	—	—	0	1	—	—
Virginia†	—	1	6	—	1	2	1	6	3	2	—	0	2	—	—
West Virginia	—	0	5	—	—	—	0	12	—	—	—	0	5	—	—
E.S. Central	—	1	5	1	1	—	8	13	8	19	—	3	8	4	2
Alabama†	—	0	2	—	1	—	1	4	—	6	—	0	1	—	—
Kentucky	—	0	5	1	—	—	2	8	5	6	—	2	6	3	2
Mississippi	—	0	1	—	—	—	0	3	—	—	U	0	0	U	U
Tennessee†	—	0	2	—	—	—	3	8	3	7	—	1	4	1	—
W.S. Central	—	2	7	—	—	1	9	29	1	6	—	1	5	—	1
Arkansas†	—	0	1	—	—	—	0	4	—	—	—	0	0	—	—
Louisiana	—	0	2	—	—	—	1	3	—	3	—	0	1	—	—
Oklahoma	—	0	1	—	—	—	2	6	—	1	—	0	3	—	—
Texas†	—	2	7	—	—	1	5	25	1	2	—	0	3	—	1
Mountain	3	3	8	3	7	—	2	8	—	7	—	1	5	1	1
Arizona	2	1	4	2	5	—	0	2	—	2	U	0	0	U	U
Colorado	1	1	3	1	1	—	0	5	—	1	—	0	2	1	1
Idaho†	—	0	2	—	—	—	0	1	—	—	—	0	2	—	—
Montana†	—	0	1	—	—	—	0	0	—	—	—	0	1	—	—
Nevada†	—	0	2	—	—	—	0	3	—	4	—	0	1	—	—
New Mexico†	—	0	1	—	—	—	0	1	—	—	—	0	2	—	—
Utah	—	0	1	—	1	—	0	1	—	—	—	0	2	—	—
Wyoming†	—	0	3	—	—	—	0	1	—	—	—	0	0	—	—
Pacific	11	5	17	13	6	—	6	17	1	3	—	1	4	—	8
Alaska	—	0	1	—	—	—	0	1	—	1	U	0	0	U	U
California	11	4	16	13	6	—	4	16	—	2	—	0	2	—	5
Hawaii	—	0	1	—	—	—	0	1	—	—	U	0	0	U	U
Oregon	—	0	2	—	—	—	1	3	1	—	—	0	3	—	3
Washington	—	0	2	—	—	—	1	3	—	—	—	0	3	—	—
Territories															
American Samoa	—	0	0	—	—	—	0	0	—	—	—	0	0	—	—
C.N.M.I.	—	—	—	—	—	—	—	—	—	—	—	—	—	—	—
Guam	—	0	6	—	—	—	1	6	—	—	—	0	7	—	—
Puerto Rico	—	0	2	—	—	—	0	2	—	—	—	0	0	—	—
U.S. Virgin Islands	—	0	0	—	—	—	0	0	—	—	—	0	0	—	—

C.N.M.I.: Commonwealth of Northern Mariana Islands.

U: Unavailable. —: No reported cases. N: Not reportable. NN: Not Nationally Notifiable. Cum: Cumulative year-to-date counts. Med: Median. Max: Maximum.

* Case counts for reporting year 2010 are provisional and subject to change. For further information on interpretation of these data, see <http://www.cdc.gov/ncphi/diss/nndss/phs/files/ProvisionalNationalNotifiableDiseasesSurveillanceData20100927.pdf>. Data for HIV/AIDS, AIDS and TB, when available, are displayed in Table IV, which appears quarterly.

† Contains data reported through the National Electronic Disease Surveillance System (NEDSS).

Morbidity and Mortality Weekly Report

TABLE II. (Continued) Provisional cases of selected notifiable diseases, United States, weeks ending January 15, 2011, and January 16, 2010 (2nd week)*

Reporting area	Legionellosis					Lyme disease					Malaria				
	Current week	Previous 52 weeks		Cum 2011	Cum 2010	Current week	Previous 52 weeks		Cum 2011	Cum 2010	Current week	Previous 52 weeks		Cum 2011	Cum 2010
		Med	Max				Med	Max				Med	Max		
United States	28	56	116	53	93	28	397	1,670	89	531	15	26	80	24	37
New England	—	4	15	—	5	—	126	503	1	188	—	1	5	—	2
Connecticut	—	1	6	—	—	—	47	212	—	97	—	0	1	—	—
Maine†	—	0	4	—	—	—	11	65	—	1	—	0	1	—	—
Massachusetts	—	2	10	—	2	—	41	223	—	61	—	1	4	—	2
New Hampshire	—	0	5	—	1	—	24	68	1	25	—	0	2	—	—
Rhode Island†	—	0	4	—	1	—	1	40	—	—	—	0	1	—	—
Vermont†	—	0	2	—	1	—	4	27	—	4	—	0	1	—	—
Mid. Atlantic	7	14	47	11	20	19	171	739	58	230	2	7	17	4	12
New Jersey	—	1	11	—	3	—	49	220	—	71	—	0	1	—	—
New York (Upstate)	3	5	19	3	5	1	38	200	2	4	1	1	6	1	4
New York City	—	2	17	2	5	—	2	7	—	9	—	4	14	2	5
Pennsylvania	4	6	18	6	7	18	86	385	56	146	1	1	3	1	3
E.N. Central	6	12	44	11	16	—	26	324	—	21	2	2	9	3	3
Illinois	—	2	15	—	5	—	1	17	—	—	—	0	7	—	2
Indiana	2	2	6	2	1	—	1	7	—	1	—	0	2	—	—
Michigan	1	2	20	3	3	—	1	13	—	—	—	0	4	—	—
Ohio	3	4	15	6	6	—	0	9	—	1	2	1	5	3	1
Wisconsin	—	1	11	—	1	—	21	297	—	19	—	0	1	—	—
W.N. Central	—	2	9	1	1	—	1	11	—	—	—	1	4	—	1
Iowa	—	0	2	—	—	—	0	10	—	—	—	0	2	—	1
Kansas	—	0	2	—	—	—	0	1	—	—	—	0	2	—	—
Minnesota	—	0	8	—	—	—	0	0	—	—	—	0	3	—	—
Missouri	—	0	4	1	1	—	0	1	—	—	—	0	3	—	—
Nebraska†	—	0	2	—	—	—	0	2	—	—	—	0	2	—	—
North Dakota	—	0	1	—	—	—	0	5	—	—	—	0	1	—	—
South Dakota	—	0	2	—	—	—	0	1	—	—	—	0	2	—	—
S. Atlantic	2	10	27	6	14	8	56	174	26	84	8	7	44	14	13
Delaware	—	0	3	—	2	—	11	32	3	23	—	0	1	—	—
District of Columbia	—	0	4	—	—	—	0	4	—	—	—	0	2	—	—
Florida	1	3	9	3	2	—	2	10	1	2	2	3	7	4	3
Georgia	—	1	4	—	1	—	0	2	—	1	—	0	6	2	2
Maryland†	1	2	6	3	8	3	24	101	11	29	6	1	24	6	4
North Carolina	—	0	7	—	—	—	1	9	—	2	—	0	13	—	2
South Carolina†	—	0	2	—	—	—	0	3	—	—	—	0	1	—	—
Virginia†	—	1	10	—	1	5	16	76	11	26	—	1	5	2	2
West Virginia	—	0	3	—	—	—	0	29	—	1	—	0	1	—	—
E.S. Central	—	2	10	3	8	—	0	4	—	4	—	0	3	—	1
Alabama†	—	0	2	—	—	—	0	1	—	—	—	0	1	—	1
Kentucky	—	0	4	2	3	—	0	1	—	—	—	0	1	—	—
Mississippi	—	0	3	—	—	—	0	0	—	—	—	0	2	—	—
Tennessee†	—	1	6	1	5	—	0	4	—	4	—	0	2	—	—
W.S. Central	—	3	8	1	2	—	2	9	—	1	—	1	7	—	3
Arkansas†	—	0	2	—	—	—	0	0	—	—	—	0	1	—	—
Louisiana	—	0	2	—	1	—	0	1	—	—	—	0	1	—	1
Oklahoma	—	0	3	—	—	—	0	0	—	—	—	0	1	—	—
Texas†	—	2	7	1	1	—	2	9	—	1	—	1	7	—	2
Mountain	—	3	10	—	4	—	0	3	—	2	1	1	4	1	1
Arizona	—	1	7	—	2	—	0	1	—	—	1	0	3	1	—
Colorado	—	0	2	—	1	—	0	1	—	—	—	0	3	—	—
Idaho†	—	0	1	—	—	—	0	2	—	1	—	0	1	—	—
Montana†	—	0	1	—	—	—	0	1	—	—	—	0	1	—	—
Nevada†	—	0	2	—	1	—	0	1	—	—	—	0	1	—	—
New Mexico†	—	0	2	—	—	—	0	2	—	—	—	0	1	—	—
Utah	—	0	2	—	—	—	0	1	—	1	—	0	1	—	1
Wyoming†	—	0	2	—	—	—	0	0	—	—	—	0	0	—	—
Pacific	13	5	19	20	23	1	4	10	4	1	2	3	10	2	1
Alaska	—	0	2	—	—	—	0	1	—	—	—	0	1	—	—
California	13	4	19	20	23	1	3	7	4	—	2	2	9	2	1
Hawaii	—	0	1	—	—	N	0	0	N	N	—	0	1	—	—
Oregon	—	0	3	—	—	—	1	4	—	1	—	0	3	—	—
Washington	—	0	4	—	—	—	0	3	—	—	—	0	5	—	—
Territories															
American Samoa	—	0	0	—	—	N	0	0	N	N	—	0	0	—	—
C.N.M.I.	—	—	—	—	—	—	—	—	—	—	—	—	—	—	—
Guam	—	0	1	—	—	—	0	0	—	—	—	0	0	—	—
Puerto Rico	—	0	0	—	—	N	0	0	N	N	—	0	2	—	1
U.S. Virgin Islands	—	0	0	—	—	—	0	0	—	—	—	0	0	—	—

C.N.M.I.: Commonwealth of Northern Mariana Islands.

U: Unavailable. —: No reported cases. N: Not reportable. NN: Not Nationally Notifiable. Cum: Cumulative year-to-date counts. Med: Median. Max: Maximum.

* Case counts for reporting year 2010 and 2011 are provisional and subject to change. For further information on interpretation of these data, see <http://www.cdc.gov/ncphi/diss/nndss/phps/files/ProvisionalNationalNotifiableDiseasesSurveillanceData20100927.pdf>. Data for TB are displayed in Table IV, which appears quarterly.

† Contains data reported through the National Electronic Disease Surveillance System (NEDSS).

Morbidity and Mortality Weekly Report

TABLE II. (Continued) Provisional cases of selected notifiable diseases, United States, weeks ending January 15, 2011, and January 16, 2010 (2nd week)*

Reporting area	Meningococcal disease, invasive [†] All serogroups					Mumps					Pertussis				
	Current week	Previous 52 weeks		Cum 2011	Cum 2010	Current week	Previous 52 weeks		Cum 2011	Cum 2010	Current week	Previous 52 weeks		Cum 2011	Cum 2010
		Med	Max				Med	Max				Med	Max		
United States	3	15	26	16	39	1	30	221	6	78	117	449	784	285	301
New England	—	0	3	1	1	—	0	4	—	1	—	9	23	—	10
Connecticut	—	0	1	1	—	—	0	2	—	—	—	2	8	—	2
Maine [§]	—	0	1	—	—	—	0	1	—	1	—	1	5	—	—
Massachusetts	—	0	2	—	1	—	0	2	—	—	—	5	13	—	6
New Hampshire	—	0	0	—	—	—	0	1	—	—	—	0	2	—	1
Rhode Island [§]	—	0	0	—	—	—	0	0	—	—	—	0	9	—	—
Vermont [§]	—	0	1	—	—	—	0	0	—	—	—	0	4	—	1
Mid. Atlantic	1	1	5	6	6	1	19	209	1	71	22	37	143	38	16
New Jersey	—	0	2	—	2	—	3	24	—	37	—	3	9	—	4
New York (Upstate)	—	0	2	—	1	—	3	99	—	34	11	11	80	13	1
New York City	1	0	3	4	2	—	1	201	—	—	—	0	9	—	—
Pennsylvania	—	0	2	2	1	1	0	16	1	—	11	14	69	25	11
E.N. Central	—	2	9	2	10	—	1	7	2	5	38	108	183	102	109
Illinois	—	0	3	—	2	—	0	2	—	2	—	20	50	3	20
Indiana	—	0	2	—	4	—	0	1	—	1	—	12	26	—	14
Michigan	—	0	4	—	2	—	0	2	—	2	4	28	57	26	25
Ohio	—	0	2	2	1	—	0	5	2	—	32	33	80	69	34
Wisconsin	—	0	3	—	1	—	0	2	—	—	2	9	21	4	16
W.N. Central	1	1	5	2	2	—	1	14	1	—	9	35	193	25	30
Iowa	—	0	3	—	—	—	0	7	—	—	—	12	34	—	5
Kansas	—	0	2	—	—	—	0	1	—	—	—	3	9	—	8
Minnesota	—	0	1	—	—	—	0	1	—	—	—	0	143	—	—
Missouri	—	0	4	1	2	—	0	2	—	—	6	8	44	16	11
Nebraska [§]	1	0	2	1	—	—	0	10	1	—	3	4	13	9	4
North Dakota	—	0	1	—	—	—	0	1	—	—	—	0	30	—	—
South Dakota	—	0	0	—	—	—	0	1	—	—	—	0	5	—	2
S. Atlantic	—	2	7	1	8	—	1	4	—	1	12	30	78	30	47
Delaware	—	0	1	—	1	—	0	0	—	—	—	0	4	—	—
District of Columbia	—	0	0	—	—	—	0	1	—	—	—	0	2	—	—
Florida	—	1	5	1	5	—	0	3	—	—	5	6	28	8	9
Georgia	—	0	2	—	1	—	0	1	—	—	—	4	18	—	4
Maryland [§]	—	0	1	—	—	—	0	1	—	1	4	3	8	5	5
North Carolina	—	0	2	—	—	—	0	0	—	—	—	0	32	—	25
South Carolina [§]	—	0	1	—	—	—	0	2	—	—	—	6	23	10	2
Virginia [§]	—	0	2	—	1	—	0	2	—	—	3	5	36	7	1
West Virginia	—	0	1	—	—	—	0	1	—	—	—	1	21	—	1
E.S. Central	—	1	3	—	2	—	0	2	—	—	1	16	34	13	28
Alabama [§]	—	0	1	—	1	—	0	2	—	—	—	4	8	—	5
Kentucky	—	0	2	—	1	—	0	1	—	—	—	6	16	9	14
Mississippi	—	0	1	—	—	—	0	0	—	—	—	1	8	—	1
Tennessee [§]	—	0	2	—	—	—	0	1	—	—	1	4	11	4	8
W.S. Central	—	1	9	—	2	—	1	11	—	—	—	55	113	2	17
Arkansas [§]	—	0	1	—	1	—	0	1	—	—	—	3	14	—	—
Louisiana	—	0	4	—	1	—	0	2	—	—	—	1	3	—	5
Oklahoma	—	0	7	—	—	—	0	0	—	—	—	0	23	—	—
Texas [§]	—	1	4	—	—	—	1	11	—	—	—	49	108	2	12
Mountain	1	1	6	3	2	—	0	4	1	—	23	29	92	50	31
Arizona	1	0	2	2	1	—	0	1	—	—	2	7	18	4	17
Colorado	—	0	4	—	—	—	0	1	—	—	19	5	76	44	2
Idaho [§]	—	0	1	1	—	—	0	1	—	—	2	2	15	2	3
Montana [§]	—	0	1	—	—	—	0	0	—	—	—	1	16	—	—
Nevada [§]	—	0	1	—	—	—	0	1	—	—	—	0	7	—	—
New Mexico [§]	—	0	1	—	1	—	0	2	1	—	—	2	11	—	5
Utah	—	0	1	—	—	—	0	1	—	—	—	4	13	—	4
Wyoming [§]	—	0	1	—	—	—	0	1	—	—	—	0	2	—	—
Pacific	—	3	9	1	6	—	0	18	1	—	12	71	220	25	13
Alaska	—	0	1	—	—	—	0	1	—	—	—	0	6	1	1
California	—	2	9	—	5	—	0	18	—	—	12	49	192	24	3
Hawaii	—	0	1	—	—	—	0	1	—	—	—	0	6	—	—
Oregon	—	1	2	1	1	—	0	1	1	—	—	6	15	—	9
Washington	—	0	4	—	—	—	0	2	—	—	—	6	38	—	—
Territories															
American Samoa	—	0	0	—	—	—	0	0	—	—	—	0	0	—	—
C.N.M.I.	—	—	—	—	—	—	—	—	—	—	—	—	—	—	—
Guam	—	0	0	—	—	—	1	15	—	—	—	0	0	—	—
Puerto Rico	—	0	0	—	—	—	0	1	—	—	—	0	1	—	—
U.S. Virgin Islands	—	0	0	—	—	—	0	0	—	—	—	0	0	—	—

C.N.M.I.: Commonwealth of Northern Mariana Islands.

U: Unavailable. —: No reported cases. N: Not reportable. NN: Not Nationally Notifiable. Cum: Cumulative year-to-date counts. Med: Median. Max: Maximum.

* Case counts for reporting year 2010 and 2011 are provisional and subject to change. For further information on interpretation of these data, see <http://www.cdc.gov/ncphi/diss/nndss/pubs/files/ProvisionalNationalNotifiableDiseasesSurveillanceData20100927.pdf>. Data for TB are displayed in Table IV, which appears quarterly.

† Data for meningococcal disease, invasive caused by serogroups A, C, Y, and W-135; serogroup B; other serogroup; and unknown serogroup are available in Table I.

§ Contains data reported through the National Electronic Disease Surveillance System (NEDSS).

Morbidity and Mortality Weekly Report

TABLE II. (Continued) Provisional cases of selected notifiable diseases, United States, weeks ending January 15, 2011, and January 16, 2010 (2nd week)*

Reporting area	Rabies, animal					Salmonellosis					Shiga toxin-producing <i>E. coli</i> (STEC) [†]				
	Current week	Previous 52 weeks		Cum 2011	Cum 2010	Current week	Previous 52 weeks		Cum 2011	Cum 2010	Current week	Previous 52 weeks		Cum 2011	Cum 2010
		Med	Max				Med	Max				Med	Max		
United States	5	62	143	15	64	242	859	1,737	522	1,605	17	85	214	58	135
New England	2	4	13	3	7	1	31	68	6	518	—	2	13	—	61
Connecticut	—	0	9	—	—	—	0	0	—	480	—	0	0	—	57
Maine [§]	—	1	4	1	2	1	2	7	3	2	—	0	3	—	—
Massachusetts	—	0	0	—	—	—	23	52	—	24	—	1	9	—	4
New Hampshire	—	0	5	—	1	—	3	12	—	4	—	0	2	—	—
Rhode Island [§]	—	0	4	—	—	—	2	17	—	7	—	0	1	—	—
Vermont [§]	2	1	3	2	4	—	2	5	3	1	—	0	2	—	—
Mid. Atlantic	3	19	41	11	19	24	95	218	50	142	4	9	32	5	7
New Jersey	—	0	0	—	—	—	16	57	—	34	—	1	9	—	2
New York (Upstate)	3	9	19	11	11	8	25	63	11	12	4	3	13	4	—
New York City	—	1	12	—	—	4	24	56	11	44	—	1	7	—	2
Pennsylvania	—	8	24	—	8	12	31	81	28	52	—	2	13	1	3
E.N. Central	—	2	27	1	1	23	89	244	49	141	1	10	43	2	22
Illinois	—	1	11	1	—	—	32	114	1	49	—	1	9	—	5
Indiana	—	0	0	—	—	—	12	62	—	20	—	2	10	—	2
Michigan	—	1	5	—	—	2	15	49	9	24	—	2	16	—	3
Ohio	—	0	12	—	1	21	24	47	39	33	1	2	11	2	2
Wisconsin	—	0	0	—	—	—	9	45	—	15	—	3	17	—	10
W.N. Central	—	4	14	—	4	18	46	97	36	47	—	11	39	3	7
Iowa	—	0	3	—	—	2	9	34	6	3	—	2	16	—	—
Kansas	—	1	4	—	4	3	7	18	5	8	—	1	5	—	3
Minnesota	—	0	4	—	—	—	0	32	—	—	—	0	7	—	—
Missouri	—	1	6	—	—	13	13	44	22	21	—	4	27	—	3
Nebraska [§]	—	1	4	—	—	—	4	13	3	10	—	2	6	3	1
North Dakota	—	0	3	—	—	—	0	13	—	2	—	0	10	—	—
South Dakota	—	0	0	—	—	—	3	17	—	3	—	0	4	—	—
S. Atlantic	—	20	104	—	24	106	258	612	200	415	5	14	30	21	14
Delaware	—	0	0	—	—	—	3	11	1	3	—	0	2	—	—
District of Columbia	—	0	0	—	—	—	1	6	—	2	—	0	1	—	1
Florida	—	0	96	—	—	65	108	226	113	177	3	4	23	11	3
Georgia	—	0	0	—	—	14	43	133	38	75	—	2	15	2	2
Maryland [§]	—	6	14	—	9	14	17	55	20	24	1	2	9	5	5
North Carolina	—	0	0	—	—	—	32	240	—	92	—	1	10	—	1
South Carolina [§]	—	0	0	—	—	2	25	99	2	23	—	0	2	—	—
Virginia [§]	—	10	25	—	14	11	19	57	26	19	1	2	9	3	2
West Virginia	—	1	7	—	1	—	2	13	—	—	—	0	3	—	—
E.S. Central	—	3	7	—	1	5	55	177	34	76	2	5	22	7	5
Alabama [§]	—	1	4	—	—	—	18	52	5	26	—	1	4	1	4
Kentucky	—	0	4	—	—	—	11	32	14	14	—	1	6	1	—
Mississippi	—	0	1	—	—	—	18	67	3	13	—	0	12	—	1
Tennessee [§]	—	1	4	—	1	5	16	53	12	23	2	2	7	5	—
W.S. Central	—	0	30	—	—	5	121	264	10	53	1	5	18	1	4
Arkansas [§]	—	0	7	—	—	4	12	43	6	5	1	1	5	1	1
Louisiana	—	0	0	—	—	—	20	49	3	23	—	0	2	—	2
Oklahoma	—	0	30	—	—	—	12	39	—	4	—	0	8	—	—
Texas [§]	—	0	0	—	—	1	76	173	1	21	—	4	14	—	1
Mountain	—	1	7	—	2	11	48	108	30	94	—	11	34	2	10
Arizona	—	0	0	—	—	—	15	42	1	41	—	1	13	1	1
Colorado	—	0	0	—	—	10	11	24	24	16	—	3	21	—	5
Idaho [§]	—	0	2	—	—	1	3	9	4	6	—	2	7	1	2
Montana [§]	—	0	3	—	—	—	1	5	—	10	—	1	5	—	—
Nevada [§]	—	0	2	—	—	—	4	22	—	3	—	0	5	—	—
New Mexico [§]	—	0	2	—	—	—	6	19	1	8	—	1	6	—	2
Utah	—	0	2	—	—	—	6	17	—	8	—	1	7	—	—
Wyoming [§]	—	0	4	—	2	—	1	8	—	2	—	0	3	—	—
Pacific	—	2	12	—	6	49	114	253	107	119	4	12	36	17	5
Alaska	—	0	2	—	3	—	1	5	1	2	—	0	1	—	1
California	—	1	12	—	2	49	79	217	101	103	4	6	22	17	4
Hawaii	—	0	0	—	—	—	3	14	—	—	—	0	4	—	—
Oregon	—	0	2	—	1	—	8	48	5	14	—	2	14	—	—
Washington	—	0	0	—	—	—	15	33	—	—	—	3	19	—	—
Territories															
American Samoa	N	0	0	N	N	—	0	1	—	—	—	0	0	—	—
C.N.M.I.	—	—	—	—	—	—	—	—	—	—	—	—	—	—	—
Guam	—	0	0	—	—	—	0	2	—	—	—	0	0	—	—
Puerto Rico	—	1	3	1	2	—	10	21	—	12	—	0	0	—	—
U.S. Virgin Islands	—	0	0	—	—	—	0	0	—	—	—	0	0	—	—

C.N.M.I.: Commonwealth of Northern Mariana Islands.

U: Unavailable. —: No reported cases. N: Not reportable. NN: Not Nationally Notifiable. Cum: Cumulative year-to-date counts. Med: Median. Max: Maximum.

* Case counts for reporting year 2010 and 2011 are provisional and subject to change. For further information on interpretation of these data, see <http://www.cdc.gov/ncphi/diss/ndds/phs/files/ProvisionalNationalNotifiableDiseasesSurveillanceData20100927.pdf>. Data for TB are displayed in Table IV, which appears quarterly.

[†] Includes *E. coli* O157:H7; Shiga toxin-positive, serogroup non-O157; and Shiga toxin-positive, not serogrouped.

[§] Contains data reported through the National Electronic Disease Surveillance System (NEDSS).

Morbidity and Mortality Weekly Report

TABLE II. (Continued) Provisional cases of selected notifiable diseases, United States, weeks ending January 15, 2011, and January 16, 2010 (2nd week)*

Reporting area	Spotted Fever Rickettsiosis (including RMSF) [†]														
	Shigellosis					Confirmed					Probable				
	Current week	Previous 52 weeks		Cum 2011	Cum 2010	Current week	Previous 52 weeks		Cum 2011	Cum 2010	Current week	Previous 52 weeks		Cum 2011	Cum 2010
	Med	Max				Med	Max				Med	Max			
United States	92	269	452	203	476	1	2	11	4	5	—	23	91	5	3
New England	—	4	17	—	71	—	0	0	—	—	—	0	1	—	—
Connecticut	—	0	0	—	63	—	0	0	—	—	—	0	0	—	—
Maine [§]	—	0	1	—	—	—	0	0	—	—	—	0	1	—	—
Massachusetts	—	3	16	—	8	—	0	0	—	—	—	0	0	—	—
New Hampshire	—	0	2	—	—	—	0	0	—	—	—	0	1	—	—
Rhode Island [§]	—	0	2	—	—	—	0	0	—	—	—	0	0	—	—
Vermont [§]	—	0	1	—	—	—	0	0	—	—	—	0	0	—	—
Mid. Atlantic	4	31	64	15	85	—	0	1	—	—	—	1	4	—	—
New Jersey	—	6	16	—	12	—	0	0	—	—	—	0	0	—	—
New York (Upstate)	3	3	15	3	4	—	0	1	—	—	—	0	3	—	—
New York City	—	5	14	7	17	—	0	1	—	—	—	0	4	—	—
Pennsylvania	1	12	55	5	52	—	0	1	—	—	—	0	3	—	—
E.N. Central	8	26	238	15	61	—	0	1	—	—	—	1	10	—	—
Illinois	—	9	228	—	28	—	0	1	—	—	—	0	5	—	—
Indiana [§]	—	1	4	—	2	—	0	1	—	—	—	0	5	—	—
Michigan	—	5	10	3	2	—	0	0	—	—	—	0	1	—	—
Ohio	8	5	18	12	17	—	0	0	—	—	—	0	2	—	—
Wisconsin	—	4	21	—	12	—	0	0	—	—	—	0	1	—	—
W.N. Central	14	37	81	26	107	—	0	4	—	—	—	4	21	—	—
Iowa	—	1	4	—	5	—	0	0	—	—	—	0	1	—	—
Kansas [§]	2	5	13	4	7	—	0	1	—	—	—	0	0	—	—
Minnesota	—	0	3	—	—	—	0	0	—	—	—	0	0	—	—
Missouri	11	29	66	21	95	—	0	4	—	—	—	4	20	—	—
Nebraska [§]	1	1	10	1	—	—	0	1	—	—	—	0	1	—	—
North Dakota	—	0	0	—	—	—	0	0	—	—	—	0	1	—	—
South Dakota	—	0	2	—	—	—	0	0	—	—	—	0	0	—	—
S. Atlantic	40	51	134	80	56	1	1	9	1	4	—	8	60	—	3
Delaware [§]	—	0	4	—	5	—	0	1	—	—	—	0	3	—	—
District of Columbia	—	0	4	—	1	—	0	1	—	—	—	0	0	—	—
Florida [§]	34	23	53	65	13	—	0	1	—	—	—	0	2	—	—
Georgia	3	14	39	10	30	—	1	6	—	4	—	0	0	—	—
Maryland [§]	2	2	8	3	1	1	0	1	1	—	—	0	5	—	1
North Carolina	—	3	36	—	3	—	0	3	—	—	—	2	48	—	1
South Carolina [§]	—	1	5	—	3	—	0	1	—	—	—	0	2	—	1
Virginia [§]	1	3	8	2	—	—	0	2	—	—	—	2	12	—	—
West Virginia	—	0	66	—	—	—	0	0	—	—	—	0	0	—	—
E.S. Central	2	13	40	11	15	—	0	3	—	—	—	5	29	1	—
Alabama [§]	—	4	14	4	1	—	0	1	—	—	—	1	8	—	—
Kentucky	—	3	28	3	6	—	0	2	—	—	—	0	0	—	—
Mississippi	—	1	4	—	1	—	0	0	—	—	—	0	3	—	—
Tennessee [§]	2	5	14	4	7	—	0	2	—	—	—	4	20	1	—
W.S. Central	6	52	109	9	24	—	0	3	—	—	—	1	18	—	—
Arkansas [§]	—	1	6	—	4	—	0	2	—	—	—	0	17	—	—
Louisiana	—	5	13	—	3	—	0	0	—	—	—	0	1	—	—
Oklahoma	—	5	13	—	—	—	0	3	—	—	—	0	6	—	—
Texas [§]	6	42	88	9	17	—	0	1	—	—	—	0	3	—	—
Mountain	2	15	32	16	28	—	0	5	3	—	—	0	4	4	—
Arizona	—	8	18	4	17	—	0	5	3	—	—	0	4	4	—
Colorado [§]	2	2	8	10	5	—	0	1	—	—	—	0	1	—	—
Idaho [§]	—	0	3	1	—	—	0	0	—	—	—	0	1	—	—
Montana [§]	—	0	1	—	—	—	0	1	—	—	—	0	1	—	—
Nevada [§]	—	0	6	—	—	—	0	0	—	—	—	0	0	—	—
New Mexico [§]	—	3	10	1	4	—	0	0	—	—	—	0	1	—	—
Utah	—	1	4	—	2	—	0	0	—	—	—	0	1	—	—
Wyoming [§]	—	0	0	—	—	—	0	0	—	—	—	0	1	—	—
Pacific	16	21	58	31	29	—	0	2	—	1	—	0	0	—	—
Alaska	—	0	1	—	—	N	0	0	N	N	N	0	0	N	N
California	16	17	52	29	29	—	0	2	—	1	—	0	0	—	—
Hawaii	—	0	3	—	—	N	0	0	N	N	N	0	0	N	N
Oregon	—	1	4	2	—	—	0	1	—	—	—	0	0	—	—
Washington	—	1	17	—	—	—	0	0	—	—	—	0	0	—	—
Territories															
American Samoa	1	1	1	1	—	N	0	0	N	N	N	0	0	N	N
C.N.M.I.	—	—	—	—	—	—	—	—	—	—	—	—	—	—	—
Guam	—	0	1	—	—	N	0	0	N	N	N	0	0	N	N
Puerto Rico	—	0	1	—	—	N	0	0	N	N	N	0	0	N	N
U.S. Virgin Islands	—	0	0	—	—	—	0	0	—	—	—	0	0	—	—

C.N.M.I.: Commonwealth of Northern Mariana Islands.

U: Unavailable. —: No reported cases. N: Not reportable. NN: Not Nationally Notifiable. Cum: Cumulative year-to-date counts. Med: Median. Max: Maximum.

* Case counts for reporting year 2010 and 2011 are provisional and subject to change. For further information on interpretation of these data, see <http://www.cdc.gov/ncphi/diss/nndss/pubs/files/ProvisionalNationalNotifiableDiseasesSurveillanceData20100927.pdf>. Data for TB are displayed in Table IV, which appears quarterly.

[†] Illnesses with similar clinical presentation that result from Spotted fever group rickettsia infections are reported as Spotted fever rickettsioses. Rocky Mountain spotted fever (RMSF) caused by Rickettsia rickettsii, is the most common and well-known spotted fever.

[§] Contains data reported through the National Electronic Disease Surveillance System (NEDSS).

Morbidity and Mortality Weekly Report

TABLE II. (Continued) Provisional cases of selected notifiable diseases, United States, weeks ending January 15, 2011, and January 16, 2010 (2nd week)*

Reporting area	<i>Streptococcus pneumoniae</i> , [†] invasive disease										Syphilis, primary and secondary				
	All ages					Age <5									
	Current week	Previous 52 weeks		Cum 2011	Cum 2010	Current week	Previous 52 weeks		Cum 2011	Cum 2010	Current week	Previous 52 weeks		Cum 2011	Cum 2010
		Med	Max				Med	Max				Med	Max		
United States	245	268	495	580	788	15	40	84	30	105	40	244	318	127	432
New England	1	9	99	4	22	—	1	14	—	2	—	9	20	5	8
Connecticut	—	0	91	—	—	—	0	12	—	—	—	1	8	—	—
Maine [§]	—	2	6	3	4	—	0	1	—	1	—	0	3	—	—
Massachusetts	—	1	5	—	2	—	1	4	—	—	—	5	15	4	7
New Hampshire	—	0	7	—	10	—	0	1	—	1	—	0	2	—	—
Rhode Island [§]	—	0	36	—	—	—	0	3	—	—	—	1	4	1	1
Vermont [§]	1	1	6	1	6	—	0	1	—	—	—	0	2	—	—
Mid. Atlantic	25	28	56	79	58	—	7	19	2	16	10	32	45	18	57
New Jersey	—	2	8	2	6	—	1	5	2	3	2	4	12	5	9
New York (Upstate)	—	3	7	1	10	—	2	7	—	5	2	2	9	5	—
New York City	10	12	32	40	13	—	2	14	—	2	—	18	31	—	36
Pennsylvania	15	10	22	36	29	—	1	5	—	6	6	7	16	8	12
E.N. Central	52	59	98	120	188	3	6	18	4	21	1	27	48	3	62
Illinois	—	2	7	—	2	—	2	5	—	2	—	8	26	—	33
Indiana	—	9	24	1	34	—	1	6	—	5	—	3	14	—	—
Michigan	4	13	27	20	41	—	1	6	—	7	—	4	12	1	11
Ohio	42	25	49	86	92	2	2	6	3	4	—	9	19	1	15
Wisconsin	6	7	22	13	19	1	0	4	1	3	1	1	3	1	3
W.N. Central	6	10	61	14	21	—	1	12	1	4	2	6	18	3	9
Iowa	—	0	0	—	—	—	0	0	—	—	—	0	3	—	—
Kansas	1	2	7	4	2	—	0	2	—	—	—	0	3	—	—
Minnesota	—	0	46	—	—	—	0	8	—	—	—	2	9	—	1
Missouri	2	2	10	4	10	—	1	4	—	2	2	3	9	3	8
Nebraska [§]	3	2	9	6	6	—	0	2	1	1	—	0	2	—	—
North Dakota	—	0	11	—	—	—	0	1	—	—	—	0	0	—	—
South Dakota	—	0	3	—	3	—	0	2	—	1	—	0	1	—	—
S. Atlantic	93	62	144	200	218	10	9	27	17	26	15	56	103	50	72
Delaware	—	1	3	2	1	—	0	0	—	—	1	0	4	1	—
District of Columbia	—	0	3	—	1	—	0	2	—	1	—	2	20	2	2
Florida	54	25	89	118	81	5	3	18	8	5	2	21	44	13	28
Georgia	11	10	26	28	44	2	2	9	4	8	—	9	29	—	2
Maryland [§]	25	9	31	49	39	2	1	6	4	3	5	6	15	11	4
North Carolina	—	0	0	—	—	—	0	0	—	—	7	6	22	15	16
South Carolina [§]	2	8	23	2	48	—	1	4	—	7	—	3	7	4	8
Virginia [§]	1	1	4	1	2	1	1	4	1	2	—	5	22	4	11
West Virginia	—	2	9	—	2	—	0	4	—	—	—	0	2	—	1
E.S. Central	5	24	48	37	80	—	2	7	4	9	1	16	39	4	23
Alabama [§]	—	0	0	—	—	—	0	0	—	—	1	5	11	3	11
Kentucky	—	3	16	14	6	—	0	3	3	2	—	2	12	—	1
Mississippi	—	1	8	—	5	—	0	2	—	1	—	4	16	—	—
Tennessee [§]	5	20	43	23	69	—	2	6	1	6	—	5	17	1	11
W.S. Central	33	35	160	43	48	1	5	21	1	6	3	37	63	21	80
Arkansas [§]	8	3	19	8	2	1	0	3	1	—	3	3	12	4	12
Louisiana	3	2	8	8	13	—	0	3	—	4	—	7	28	—	23
Oklahoma	—	1	5	—	2	—	1	5	—	2	—	2	7	—	1
Texas [§]	22	27	139	27	31	—	3	17	—	—	—	24	33	17	44
Mountain	28	34	68	74	136	1	4	12	1	16	1	10	25	7	13
Arizona	17	13	38	35	81	—	2	7	—	10	1	3	8	2	3
Colorado	6	11	22	26	30	1	1	4	1	2	—	2	8	—	5
Idaho [§]	1	0	2	1	—	—	0	2	—	—	—	0	2	—	1
Montana [§]	—	0	2	—	1	—	0	1	—	—	—	0	2	—	—
Nevada [§]	—	1	4	1	6	—	0	1	—	2	—	2	9	4	2
New Mexico [§]	3	3	10	9	8	—	0	4	—	—	—	1	4	1	2
Utah	—	4	9	—	10	—	0	3	—	2	—	1	4	—	—
Wyoming [§]	1	0	15	2	—	—	0	1	—	—	—	0	0	—	—
Pacific	2	5	16	9	17	—	0	7	—	5	7	45	63	16	108
Alaska	—	2	9	1	11	—	0	5	—	3	—	0	1	—	—
California	2	3	15	8	6	—	0	5	—	2	3	38	52	11	92
Hawaii	—	0	2	—	—	—	0	0	—	—	—	0	5	—	2
Oregon	—	0	0	—	—	—	0	0	—	—	—	1	7	—	2
Washington	—	0	0	—	—	—	0	0	—	—	4	4	11	5	12
Territories															
American Samoa	—	0	0	—	—	—	0	0	—	—	—	0	0	—	—
C.N.M.I.	—	—	—	—	—	—	—	—	—	—	—	—	—	—	—
Guam	—	0	0	—	—	—	0	0	—	—	—	0	0	—	—
Puerto Rico	—	0	0	—	—	—	0	0	—	—	—	3	15	2	5
U.S. Virgin Islands	—	0	0	—	—	—	0	0	—	—	—	0	0	—	—

C.N.M.I.: Commonwealth of Northern Mariana Islands.

U: Unavailable. —: No reported cases. N: Not reportable. NN: Not Nationally Notifiable. Cum: Cumulative year-to-date counts. Med: Median. Max: Maximum.

* Case counts for reporting year 2010 and 2011 are provisional and subject to change. For further information on interpretation of these data, see <http://www.cdc.gov/ncphi/diss/ndss/phps/files/ProvisionalNationalNotifiableDiseasesSurveillanceData20100927.pdf>. Data for TB are displayed in Table IV, which appears quarterly.

[†] Includes drug resistant and susceptible cases of invasive *Streptococcus pneumoniae* disease among children <5 years and among all ages. Case definition: Isolation of *S. pneumoniae* from a normally sterile body site (e.g., blood or cerebrospinal fluid).

[§] Contains data reported through the National Electronic Disease Surveillance System (NEDSS).

Morbidity and Mortality Weekly Report

TABLE II. (Continued) Provisional cases of selected notifiable diseases, United States, weeks ending January 15, 2011, and January 16, 2010 (2nd week)*

Reporting area	Varicella (chickenpox) [§]					West Nile virus disease [†]									
	Current week	Previous 52 weeks		Cum 2011	Cum 2010	Neuroinvasive				Nonneuroinvasive [¶]					
		Med	Max			Current week	Previous 52 weeks	Cum 2011	Cum 2010	Current week	Previous 52 weeks	Cum 2011	Cum 2010		
United States	135	287	562	249	531	—	0	1	—	1	—	0	0	—	—
New England	6	18	41	13	47	—	0	0	—	—	—	0	0	—	—
Connecticut	—	6	20	—	6	—	0	0	—	—	—	0	0	—	—
Maine [§]	—	4	15	—	20	—	0	0	—	—	—	0	0	—	—
Massachusetts	—	5	12	—	9	—	0	0	—	—	—	0	0	—	—
New Hampshire	—	2	8	—	7	—	0	0	—	—	—	0	0	—	—
Rhode Island [§]	—	0	3	—	1	—	0	0	—	—	—	0	0	—	—
Vermont [§]	6	1	10	13	4	—	0	0	—	—	—	0	0	—	—
Mid. Atlantic	13	32	62	27	62	—	0	0	—	—	—	0	0	—	—
New Jersey	—	8	30	—	23	—	0	0	—	—	—	0	0	—	—
New York (Upstate)	N	0	0	N	N	—	0	0	—	—	—	0	0	—	—
New York City	—	0	1	—	—	—	0	0	—	—	—	0	0	—	—
Pennsylvania	13	23	40	27	39	—	0	0	—	—	—	0	0	—	—
E.N. Central	76	97	176	135	201	—	0	0	—	—	—	0	0	—	—
Illinois	1	21	45	10	50	—	0	0	—	—	—	0	0	—	—
Indiana [§]	—	5	35	6	8	—	0	0	—	—	—	0	0	—	—
Michigan	17	31	62	35	73	—	0	0	—	—	—	0	0	—	—
Ohio	58	27	56	84	61	—	0	0	—	—	—	0	0	—	—
Wisconsin	—	7	22	—	9	—	0	0	—	—	—	0	0	—	—
W.N. Central	1	15	32	11	37	—	0	0	—	—	—	0	0	—	—
Iowa	N	0	0	N	N	—	0	0	—	—	—	0	0	—	—
Kansas [§]	—	3	22	—	20	—	0	0	—	—	—	0	0	—	—
Minnesota	—	0	0	—	—	—	0	0	—	—	—	0	0	—	—
Missouri	—	9	23	10	16	—	0	0	—	—	—	0	0	—	—
Nebraska [§]	N	0	0	N	N	—	0	0	—	—	—	0	0	—	—
North Dakota	—	0	10	—	1	—	0	0	—	—	—	0	0	—	—
South Dakota	1	1	7	1	—	—	0	0	—	—	—	0	0	—	—
S. Atlantic	20	35	100	25	52	—	0	0	—	—	—	0	0	—	—
Delaware [§]	—	0	3	—	—	—	0	0	—	—	—	0	0	—	—
District of Columbia	1	0	4	1	—	—	0	0	—	—	—	0	0	—	—
Florida [§]	17	16	57	21	24	—	0	0	—	—	—	0	0	—	—
Georgia	N	0	0	N	N	—	0	0	—	—	—	0	0	—	—
Maryland [§]	N	0	0	N	N	—	0	0	—	—	—	0	0	—	—
North Carolina	N	0	0	N	N	—	0	0	—	—	—	0	0	—	—
South Carolina [§]	—	0	35	—	2	—	0	0	—	—	—	0	0	—	—
Virginia [§]	2	10	29	3	6	—	0	0	—	—	—	0	0	—	—
West Virginia	—	7	26	—	20	—	0	0	—	—	—	0	0	—	—
E.S. Central	—	5	22	8	13	—	0	1	—	1	—	0	0	—	—
Alabama [§]	—	5	22	8	13	—	0	0	—	—	—	0	0	—	—
Kentucky	N	0	0	N	N	—	0	0	—	—	—	0	0	—	—
Mississippi	—	0	2	—	—	—	0	1	—	1	—	0	0	—	—
Tennessee [§]	N	0	0	N	N	—	0	0	—	—	—	0	0	—	—
W.S. Central	19	43	177	26	56	—	0	0	—	—	—	0	0	—	—
Arkansas [§]	—	1	32	—	5	—	0	0	—	—	—	0	0	—	—
Louisiana	—	2	5	1	5	—	0	0	—	—	—	0	0	—	—
Oklahoma	N	0	0	N	N	—	0	0	—	—	—	0	0	—	—
Texas [§]	19	40	171	25	46	—	0	0	—	—	—	0	0	—	—
Mountain	—	20	36	2	63	—	0	0	—	—	—	0	0	—	—
Arizona	—	0	0	—	—	—	0	0	—	—	—	0	0	—	—
Colorado [§]	—	8	17	—	25	—	0	0	—	—	—	0	0	—	—
Idaho [§]	N	0	0	N	N	—	0	0	—	—	—	0	0	—	—
Montana [§]	—	3	17	—	10	—	0	0	—	—	—	0	0	—	—
Nevada [§]	N	0	0	N	N	—	0	0	—	—	—	0	0	—	—
New Mexico [§]	—	1	8	2	6	—	0	0	—	—	—	0	0	—	—
Utah	—	4	17	—	22	—	0	0	—	—	—	0	0	—	—
Wyoming [§]	—	0	3	—	—	—	0	0	—	—	—	0	0	—	—
Pacific	—	1	6	2	—	—	0	0	—	—	—	0	0	—	—
Alaska	—	1	5	2	—	—	0	0	—	—	—	0	0	—	—
California	—	0	0	—	—	—	0	0	—	—	—	0	0	—	—
Hawaii	—	0	6	—	—	—	0	0	—	—	—	0	0	—	—
Oregon	N	0	0	N	N	—	0	0	—	—	—	0	0	—	—
Washington	N	0	0	N	N	—	0	0	—	—	—	0	0	—	—
Territories															
American Samoa	N	0	0	N	N	—	0	0	—	—	—	0	0	—	—
C.N.M.I.	—	—	—	—	—	—	—	—	—	—	—	—	—	—	—
Guam	—	0	2	—	—	—	0	0	—	—	—	0	0	—	—
Puerto Rico	3	9	30	3	4	—	0	0	—	—	—	0	0	—	—
U.S. Virgin Islands	—	0	0	—	—	—	0	0	—	—	—	0	0	—	—

C.N.M.I.: Commonwealth of Northern Mariana Islands.

U: Unavailable. —: No reported cases. N: Not reportable. NN: Not Nationally Notifiable. Cum: Cumulative year-to-date counts. Med: Median. Max: Maximum.

* Case counts for reporting year 2010 and 2011 are provisional and subject to change. For further information on interpretation of these data, see <http://www.cdc.gov/ncphi/diss/nndss/phs/files/ProvisionalNationalNotifiableDiseasesSurveillanceData20100927.pdf>. Data for TB are displayed in Table IV, which appears quarterly.

† Updated weekly from reports to the Division of Vector-Borne Infectious Diseases, National Center for Zoonotic, Vector-Borne, and Enteric Diseases (ArboNET Surveillance). Data for California serogroup, eastern equine, Powassan, St. Louis, and western equine diseases are available in Table I.

§ Contains data reported through the National Electronic Disease Surveillance System (NEDSS).

¶ Not reportable in all states. Data from states where the condition is not reportable are excluded from this table, except starting in 2007 for the domestic arboviral diseases and influenza-associated pediatric mortality, and in 2003 for SARS-CoV. Reporting exceptions are available at <http://www.cdc.gov/ncphi/diss/nndss/phs/infdis.htm>.

Morbidity and Mortality Weekly Report

TABLE III. Deaths in 122 U.S. cities,* week ending January 15, 2011 (2nd week)

Reporting area	All causes, by age (years)						P&I†	Total	Reporting area (Continued)	All causes, by age (years)						P&I†	Total
	All Ages	≥65	45-64	25-44	1-24	<1				All Ages	≥65	45-64	25-44	1-24	<1		
New England	587	427	116	23	13	8	57	S. Atlantic	1,398	909	356	66	41	26	99		
Boston, MA	134	83	37	5	6	3	5	Atlanta, GA	62	30	18	5	4	5	2		
Bridgeport, CT	48	42	5	1	—	—	5	Baltimore, MD	170	90	56	13	7	4	9		
Cambridge, MA	18	17	1	—	—	—	4	Charlotte, NC	134	89	35	2	4	4	10		
Fall River, MA	27	20	6	1	—	—	4	Jacksonville, FL	210	148	45	11	4	2	21		
Hartford, CT	59	45	12	1	1	—	4	Miami, FL	142	102	29	7	2	2	5		
Lowell, MA	35	34	1	—	—	—	6	Norfolk, VA	41	29	8	4	—	—	4		
Lynn, MA	7	4	1	1	1	—	—	Richmond, VA	71	42	24	2	1	2	7		
New Bedford, MA	32	25	5	1	1	—	3	Savannah, GA	87	57	23	5	1	1	5		
New Haven, CT	17	13	2	2	—	—	2	St. Petersburg, FL	62	31	21	3	5	2	8		
Providence, RI	67	40	20	4	2	1	4	Tampa, FL	285	202	65	9	8	1	19		
Somerville, MA	U	U	U	U	U	U	U	Washington, D.C.	108	68	28	4	5	3	7		
Springfield, MA	41	28	7	3	2	1	3	Wilmington, DE	26	21	4	1	—	—	2		
Waterbury, CT	37	28	8	1	—	—	6	E.S. Central	823	545	206	39	16	17	70		
Worcester, MA	65	48	11	3	—	3	11	Birmingham, AL	112	75	26	7	4	—	10		
Mid. Atlantic	2,601	1,860	550	113	35	43	171	Chattanooga, TN	54	30	16	4	—	4	1		
Albany, NY	56	42	9	3	—	2	2	Knoxville, TN	120	91	25	3	1	—	7		
Allentown, PA	31	25	4	2	—	—	1	Lexington, KY	62	40	15	5	1	1	2		
Buffalo, NY	82	54	22	4	2	—	7	Memphis, TN	166	104	43	8	2	9	21		
Camden, NJ	20	12	6	2	—	—	2	Mobile, AL	97	63	29	3	2	—	7		
Elizabeth, NJ	21	13	8	—	—	—	4	Montgomery, AL	47	34	7	3	2	1	6		
Erie, PA	42	35	6	—	1	—	5	Nashville, TN	165	108	45	6	4	2	16		
Jersey City, NJ	U	U	U	U	U	U	U	W.S. Central	1,092	709	269	67	28	19	78		
New York City, NY	1,474	1,080	290	68	14	22	103	Austin, TX	97	58	28	8	3	—	7		
Newark, NJ	28	22	5	1	—	—	1	Baton Rouge, LA	U	U	U	U	U	U	U		
Paterson, NJ	22	15	4	2	—	1	4	Corpus Christi, TX	58	40	13	2	2	1	5		
Philadelphia, PA	487	299	140	22	14	12	18	Dallas, TX	237	145	61	18	9	4	17		
Pittsburgh, PA [§]	43	38	4	1	—	—	1	El Paso, TX	80	63	15	2	—	—	4		
Reading, PA	34	29	4	1	—	—	2	Fort Worth, TX	U	U	U	U	U	U	U		
Rochester, NY	79	60	16	1	1	1	5	Houston, TX	93	52	26	8	2	5	9		
Schenectady, NY	27	24	2	—	—	1	4	Little Rock, AR	57	36	11	8	2	—	—		
Scranton, PA	27	20	4	2	1	—	1	New Orleans, LA	U	U	U	U	U	U	U		
Syracuse, NY	61	52	7	—	1	1	9	San Antonio, TX	264	168	70	14	7	5	21		
Trenton, NJ	38	18	12	4	1	3	—	Shreveport, LA	71	46	20	3	—	2	2		
Utica, NY	11	9	2	—	—	—	—	Tulsa, OK	135	101	25	4	3	2	13		
Yonkers, NY	18	13	5	—	—	—	2	Mountain	1,152	775	276	66	15	19	69		
E.N. Central	1,990	1,373	455	99	40	23	122	Albuquerque, NM	143	106	27	8	1	1	13		
Akron, OH	59	41	14	2	—	2	6	Boise, ID	66	51	14	—	—	1	7		
Canton, OH	57	39	16	2	—	—	5	Colorado Springs, CO	76	61	10	4	1	—	1		
Chicago, IL	264	164	79	15	6	—	19	Denver, CO	79	52	20	6	—	1	3		
Cincinnati, OH	92	66	17	1	4	4	6	Las Vegas, NV	263	174	68	17	3	1	16		
Cleveland, OH	279	183	70	20	4	2	13	Ogden, UT	43	30	8	4	—	1	3		
Columbus, OH	U	U	U	U	U	U	U	Phoenix, AZ	193	108	57	14	5	8	9		
Dayton, OH	143	99	27	7	6	4	17	Pueblo, CO	27	19	4	1	2	1	1		
Detroit, MI	140	85	35	10	6	4	2	Salt Lake City, UT	139	80	47	5	3	4	8		
Evansville, IN	31	24	6	1	—	—	—	Tucson, AZ	123	94	21	7	—	1	8		
Fort Wayne, IN	102	75	23	3	1	—	2	Pacific	1,912	1,302	421	115	33	38	189		
Gary, IN	20	12	6	—	2	—	—	Berkeley, CA	16	10	3	1	—	2	1		
Grand Rapids, MI	56	42	8	3	2	1	8	Fresno, CA	139	97	30	6	1	5	15		
Indianapolis, IN	224	154	52	12	4	2	7	Glendale, CA	37	29	2	6	—	—	6		
Lansing, MI	61	50	9	1	—	1	6	Honolulu, HI	61	45	10	4	2	—	9		
Milwaukee, WI	98	60	25	10	1	2	5	Long Beach, CA	65	41	21	3	—	—	6		
Peoria, IL	60	44	14	1	1	—	7	Los Angeles, CA	344	213	84	30	8	9	37		
Rockford, IL	75	63	9	2	—	1	6	Pasadena, CA	25	18	5	2	—	—	2		
South Bend, IN	49	37	9	3	—	—	6	Portland, OR	135	83	39	7	2	4	8		
Toledo, OH	114	83	24	4	3	—	6	Sacramento, CA	173	122	38	8	4	1	30		
Youngstown, OH	66	52	12	2	—	—	1	San Diego, CA	194	142	35	9	5	3	16		
W.N. Central	708	457	193	30	12	15	60	San Francisco, CA	157	99	42	9	2	3	13		
Des Moines, IA	71	55	15	1	—	—	7	San Jose, CA	207	155	34	6	6	6	18		
Duluth, MN	40	29	11	—	—	—	4	Santa Cruz, CA	33	28	5	—	—	—	2		
Kansas City, KS	22	12	9	1	—	—	1	Seattle, WA	126	80	33	10	—	2	7		
Kansas City, MO	99	65	23	6	2	3	10	Spokane, WA	62	43	14	3	1	1	6		
Lincoln, NE	47	34	11	1	—	1	2	Tacoma, WA	138	97	26	11	2	2	13		
Minneapolis, MN	66	34	24	3	2	3	5	Total¶	12,263	8,357	2,842	618	233	208	915		
Omaha, NE	88	59	21	4	2	2	11										
St. Louis, MO	116	61	38	9	3	4	7										
St. Paul, MN	57	38	15	3	—	1	6										
Wichita, KS	102	70	26	2	3	1	7										

U: Unavailable. —: No reported cases.

* Mortality data in this table are voluntarily reported from 122 cities in the United States, most of which have populations of >100,000. A death is reported by the place of its occurrence and by the week that the death certificate was filed. Fetal deaths are not included.

† Pneumonia and influenza.

§ Because of changes in reporting methods in this Pennsylvania city, these numbers are partial counts for the current week. Complete counts will be available in 4 to 6 weeks.

¶ Total includes unknown ages.

The *Morbidity and Mortality Weekly Report (MMWR)* Series is prepared by the Centers for Disease Control and Prevention (CDC) and is available free of charge in electronic format. To receive an electronic copy each week, visit MMWR's free subscription page at <http://www.cdc.gov/mmwr/mmwrsubscribe.html>. Paper copy subscriptions are available through the Superintendent of Documents, U.S. Government Printing Office, Washington, DC 20402; telephone 202-512-1800.

Data presented by the Notifiable Disease Data Team and 122 Cities Mortality Data Team in the weekly *MMWR* are provisional, based on weekly reports to CDC by state health departments. Address all inquiries about the *MMWR* Series, including material to be considered for publication, to Editor, *MMWR* Series, Mailstop E-90, CDC, 1600 Clifton Rd., N.E., Atlanta, GA 30333 or to mmwrq@cdc.gov.

All material in the *MMWR* Series is in the public domain and may be used and reprinted without permission; citation as to source, however, is appreciated.

Use of trade names and commercial sources is for identification only and does not imply endorsement by the U.S. Department of Health and Human Services.

References to non-CDC sites on the Internet are provided as a service to *MMWR* readers and do not constitute or imply endorsement of these organizations or their programs by CDC or the U.S. Department of Health and Human Services. CDC is not responsible for the content of these sites. URL addresses listed in *MMWR* were current as of the date of publication.