



MMWRTM

Morbidity and Mortality Weekly Report

www.cdc.gov/mmwr

Surveillance Summaries

August 8, 2008 / Vol. 57 / No. SS-6

Epilepsy Surveillance Among Adults — 19 States, Behavioral Risk Factor Surveillance System, 2005



DEPARTMENT OF HEALTH AND HUMAN SERVICES
CENTERS FOR DISEASE CONTROL AND PREVENTION

The *MMWR* series of publications is published by the Coordinating Center for Health Information and Service, Centers for Disease Control and Prevention (CDC), U.S. Department of Health and Human Services, Atlanta, GA 30333.

Suggested Citation: Centers for Disease Control and Prevention. [Title]. Surveillance Summaries, [Date]. *MMWR* 2008;57(No. SS-#).

Centers for Disease Control and Prevention

Julie L. Gerberding, MD, MPH
Director

Tanja Popovic, MD, PhD
Chief Science Officer

James W. Stephens, PhD
Associate Director for Science

Steven L. Solomon, MD
Director, Coordinating Center for Health Information and Service

Jay M. Bernhardt, PhD, MPH
Director, National Center for Health Marketing

Katherine L. Daniel, PhD
Deputy Director, National Center for Health Marketing

Editorial and Production Staff

Frederic E. Shaw, MD, JD
Editor, MMWR Series

Susan F. Davis, MD
(Acting) Assistant Editor, MMWR Series

Teresa F. Rutledge
(Acting) Managing Editor, MMWR Series

David C. Johnson
(Acting) Lead Technical Writer-Editor

Catherine H. Bricker, MS
Project Editor

Peter M. Jenkins
(Acting) Lead Visual Information Specialist

Lynda G. Cupell
Malbea A. LaPete
Visual Information Specialists

Quang M. Doan, MBA
Erica R. Shaver
Information Technology Specialists

Editorial Board

William L. Roper, MD, MPH, Chapel Hill, NC, Chairman

Virginia A. Caine, MD, Indianapolis, IN

David W. Fleming, MD, Seattle, WA

William E. Halperin, MD, DrPH, MPH, Newark, NJ

Margaret A. Hamburg, MD, Washington, DC

King K. Holmes, MD, PhD, Seattle, WA

Deborah Holtzman, PhD, Atlanta, GA

John K. Iglehart, Bethesda, MD

Dennis G. Maki, MD, Madison, WI

Sue Mallonee, MPH, Oklahoma City, OK

Stanley A. Plotkin, MD, Doylestown, PA

Patricia Quinlisk, MD, MPH, Des Moines, IA

Patrick L. Remington, MD, MPH, Madison, WI

Barbara K. Rimer, DrPH, Chapel Hill, NC

John V. Rullan, MD, MPH, San Juan, PR

Anne Schuchat, MD, Atlanta, GA

Dixie E. Snider, MD, MPH, Atlanta, GA

John W. Ward, MD, Atlanta, GA

CONTENTS

Introduction	2
Methods	2
Results	3
Discussion	6
References	8
Acknowledgments	11

On the cover: Magnetic resonance imaging scan of the human brain (sagittal section).

Epilepsy Surveillance Among Adults — 19 States, Behavioral Risk Factor Surveillance System, 2005

Rosemarie Kobau, MPH¹
Hatice Zahran, MD, MPH²
David J. Thurman, MD, MPH¹
Matthew M. Zack, MD, MPH¹
Thomas R. Henry, MD³
Steven C. Schachter, MD⁴
Patricia H. Price, DO¹

¹*Division of Adult and Community Health, National Center for Chronic Disease Prevention and Health Promotion, CDC*

²*Agency for Toxic Substances and Disease Registry, CDC*

³*University of Minnesota, Minneapolis, Minnesota*

⁴*Beth Israel Deaconess Medical Center, Boston; Harvard Medical School, Boston, Massachusetts*

Abstract

Problem/Condition: Epilepsy is a brain disorder characterized by brief, recurrent disturbances in the normal electrical functions of the brain that result in seizures. Few population-based studies of epilepsy have been published for the United States, and the prevalence is expected to increase with the aging of the population. This is the first multistate study examining the prevalence of self-reported epilepsy and active epilepsy and includes an examination of socioedemographic and behavioral characteristics and of health-related quality of life among adults with epilepsy.

Reporting Period Covered: Data from the 2005 Behavioral Risk Factor Surveillance System (BRFSS) are presented for 19 states.

Description of System: BRFSS is an ongoing, state-based, random-digit-dialed telephone survey of the noninstitutionalized U.S. population aged ≥ 18 years. BRFSS collects information on health risk behaviors and preventive health services related to leading causes of death and morbidity. In 2005, 19 states included questions on epilepsy or seizure disorder.

Results/Interpretation: During 2005, 1.65% of noninstitutionalized adults from 19 states reported that they had ever been told by a doctor that they had epilepsy or seizure disorder (i.e., a history of epilepsy); 0.84% reported having active epilepsy (i.e., a history of epilepsy and currently taking medication or reporting one or more seizures during the past 3 months), and 0.75% were classified as having inactive epilepsy (i.e., a history of epilepsy or seizure disorder but currently not taking medicine to control epilepsy and no seizures in the 3 months preceding the survey). No substantial differences among states in the prevalence of lifetime epilepsy, active epilepsy, or inactive epilepsy were detected. Prevalence estimates for active and inactive epilepsy revealed no significant differences by sex or race/ethnicity.

Adults with a history of epilepsy and with active epilepsy were more likely to report fair or poor health, be unemployed or unable to work, live in households with the lowest annual incomes, and have a history of co-occurring disorders (e.g., stroke or arthritis). Adults with a history of epilepsy and with active epilepsy also reported significantly worse health-related quality of life. Adults with a history of epilepsy were more likely to be obese, physically inactive, and current smokers. Among adults with active epilepsy with recent seizures, 16.1% reported not currently taking their epilepsy medication, and 65.1% reported having had more than one seizure in the past month. Among adults with a history of epilepsy, 23.7% reported cost as a barrier to seeking care from a doctor within the past year. A total of 34.9% of adults with active epilepsy with seizures reported not having seen a neurologist or an epilepsy specialist (i.e., a neurologist who specializes in treating epilepsy) in the previous year.

Public Health Action: Additional descriptive and analytic studies of epilepsy occurrence in diverse U.S. communities and populations are needed to better characterize epilepsy incidence rates, risk factors and etiologies, and types and severity, as well as epilepsy-associated conditions and disabilities. Community-based strategies that link health-care providers with

Corresponding author: Rosemarie Kobau, MPH, Division of Adult and Community Health, National Center for Chronic Disease Prevention and Health Promotion, CDC, 4770 Buford Hwy, N.E., MS K-51, Atlanta, GA 30347. Telephone: 770-488-6087; Fax: 770-488-5486; E-mail: rkobau@cdc.gov.

social services such as public transportation, mental health services, and employment services might improve quality of life in persons with epilepsy. Implementing educational programs developed by CDC and the Epilepsy Foundation for schools, emergency responders, employers, providers, and the general public can increase awareness about epilepsy and reduce stigma associated with this disorder.

Introduction

Epilepsy is one of the most common neurological disorders worldwide, affecting 50 million persons (1), including an estimated 2.1 to 2.7 million persons in the United States (2,3). The condition is a brain disorder characterized by recurrent, transient disturbances in the electrical functions of the brain that result in seizures. Signs and symptoms of seizures include sudden and transitory phenomena such as alterations of consciousness, or involuntary motor, sensory, autonomic, or psychic effects (3–5). Many persons with epilepsy also experience certain signs and symptoms immediately after seizures, such as memory impairment, fatigue, depressive symptoms, or anxiety (i.e., the postictal state) (6). Seizures are broadly classified into generalized, partial, and unclassifiable types, with additional subcategories; persons can experience more than one seizure type (4,5).

Seizures and epilepsy result from many causes, including those that are preventable. Causes include traumatic brain injury, stroke, central nervous system (CNS) infections (e.g., meningitis and encephalitis), brain tumor, idiopathic causes presumed to be genetic, and others (5). Not all persons with seizures have epilepsy. Epilepsy is not diagnosed when seizures are provoked by acute and temporary conditions that affect brain function (e.g., fever, acute systemic metabolic disturbance, or alcohol withdrawal). Rather, a person receives a diagnosis of epilepsy only when seizures recur in the absence of such acute conditions and when any underlying pathological conditions, if identifiable, are chronic (4,5). Although persons of all ages can develop epilepsy, incidence rates are higher among young children and older adults because risk factors for epilepsy are more common in these age groups (2,3). Recurrent seizures often result in limitations in activities, depression, anxiety, and impaired quality of life and can increase risk for death (7–9). Misconceptions about epilepsy and its causes and consequences are prevalent, contributing to stigma associated with the condition and increasing challenges for persons living with this disorder (1,8–12).

Texas, Georgia, Tennessee, and South Carolina were among the first states to use the state-based BRFSS to assess state-level epilepsy prevalence using five standardized questions developed by the CDC Epilepsy Program (13–17). In 2003 and 2005, CDC, in partnership with the University of California, Los Angeles, used the California Health Interview Survey (CHIS) to assess epilepsy prevalence in California (16). Although case definitions differed among these state studies

depending on the questions used, lifetime prevalence estimates ranged from 1.2% to 2.6%, and prevalence estimates for active epilepsy ranged from 0.7% to 1.6% (13–16).

With CDC financial and technical support, local foundation affiliates of the national Epilepsy Foundation worked with state departments of public health to incorporate at least one of five standardized epilepsy questions into the 2005 Behavioral Risk Factor Surveillance System (BRFSS). Nineteen states accepted one or more questions. This study is the first to examine the prevalence of self-reported epilepsy in these states and the prevalence of active epilepsy in some states. Sociodemographic and behavioral characteristics, health-related quality of life (HRQOL), and life satisfaction of persons by epilepsy status also were examined.

Methods

BRFSS is an ongoing, state-based, random-digit-dialed telephone survey of the civilian, noninstitutionalized population aged ≥ 18 years that tracks the prevalence of key health and safety-related behaviors and characteristics (18). The questionnaire consists of three parts: 1) core questions asked in all 50 states, the District of Columbia, and three territories; 2) supplemental modules (i.e., a series of questions on a specific topic such as arthritis, diabetes, or depression); and 3) state-added questions. Each state decides which supplemental modules and state-added questions to include in its BRFSS survey. BRFSS also includes standardized questions on socio-demographic and behavioral characteristics and self-reported chronic diseases. The complete BRFSS survey is available at <http://www.cdc.gov/brfss> (18). BRFSS data are weighted to reflect the age, sex, and racial/ethnic distribution of the state's estimated population during the survey year.

Twelve states included all five epilepsy questions as state-added questions in their 2005 BRFSS questionnaire; one state included three questions; four states included two questions; and two states included one question.* The first question was, "Have you ever been told by a doctor that you have a seizure disorder or epilepsy?" (response options: "yes," "no," "don't know," and "refused"). Participants who answered "yes" to this question were asked some or all of the remaining questions:

* All five questions: Arizona, Delaware, Georgia, Michigan, Missouri, New York, Oregon, Pennsylvania, South Carolina, Tennessee, Washington, and Wyoming; three questions: Kentucky; two questions: Florida, Texas, Virginia, and Wisconsin; one question: Kansas and New Hampshire.

2) “Are you currently taking any medicine to control your seizure disorder or epilepsy?” (response options: “yes,” “no,” “don’t know,” and “refused”); 3) “How many seizures have you had in the last 3 months?” (response options: “none,” “one,” “more than one,” “no longer have epilepsy or seizure disorder,” “don’t know,” and “refused”); 4) “In the past year, have you seen a neurologist or epilepsy specialist for your epilepsy or seizure disorder?” (response options: “yes,” “no,” “don’t know,” and “refused”); and 5) “During the past 30 days, to what extent has epilepsy or its treatment interfered with your normal activities like working, school, or socializing with family or friends?” (response options: “not at all,” “slightly,” “moderately,” “quite a bit,” “extremely,” “don’t know,” and “refused”).

The lifetime prevalence (i.e., cumulative incidence) of self-reported epilepsy was determined by affirmative responses to the first question. Respondents were classified as having active epilepsy if they responded “yes” to ever having been told by a doctor that they had a seizure disorder or epilepsy and also responded that they either were currently taking medication to control it, had one or more seizures in the past 3 months, or both (Figure). Active epilepsy was further categorized by whether the respondent had experienced a seizure in the past 3 months (i.e., active epilepsy with or without recent seizures). Respondents who responded that they had ever been told by a doctor that they had a seizure disorder or epilepsy (i.e., had a history of epilepsy) but were not taking medication for epilepsy and had not had a seizure in the past 3 months[†] were classified as those with inactive epilepsy (Figure).

HRQOL was measured for all respondents, with and without a history of epilepsy, with the following validated CDC Healthy Days questions (19): 1) “Now thinking about your physical health, which includes physical illness and injury, for how many days during the past 30 days was your physical health not good?” 2) “Now thinking about your mental health, which includes stress, depression, and problems with emotions, for how many days during the past 30 days was your mental health not good?” and 3) “During the past 30 days, for about how many days did poor physical or mental health keep you from doing your usual activities, such as self-care, work, or recreation?” CDC methods for calculating HRQOL were used (19). In addition, all respondents were asked to respond to a question on self-rated health: “Would you say that in general your health is excellent, very good, good, fair, or poor?” Responses for self-rated health were classified into two groups for analysis: 1) excellent, very good, or good and 2) fair or poor.

[†] Including those who responded “no longer have epilepsy” to the seizure frequency question.

Statistical software was used to account for the complex survey design. Data were weighted to obtain appropriate population estimates, standard errors, and 95% confidence intervals (CIs). Estimates were considered significantly different if CIs did not overlap. The total eligible number of BRFSS respondents among all 50 states was 556,117 adults; the median refusal rate was 14.4% (20). The Council of American Survey Organizations (CASRO) response rates among the 19 states for the 2005 BRFSS survey ranged from 40.0% (New York) to 63.1% (Kansas) (median among 19 states: 51.1%); cooperation rates[§] among respondents ranged from 67.6% (New York) to 85.0% (Tennessee) (median among 19 states: 76.9%) (20).

Results

Prevalence

A total of 2,207 adults from 19 states (1.65%, CI = 1.52–1.80) reported ever being told they had epilepsy (i.e., a history of epilepsy) (Table 1). Among 13 states that included three questions sufficient to classify epilepsy status, 919 (0.84%; CI = 0.74–0.96) were classified as having active epilepsy, and 693 (0.75%; CI = 0.65–0.86) were classified as having inactive epilepsy (Table 1). Some significant differences in prevalence were detected between states (e.g., Delaware and Wyoming, New York and Washington).

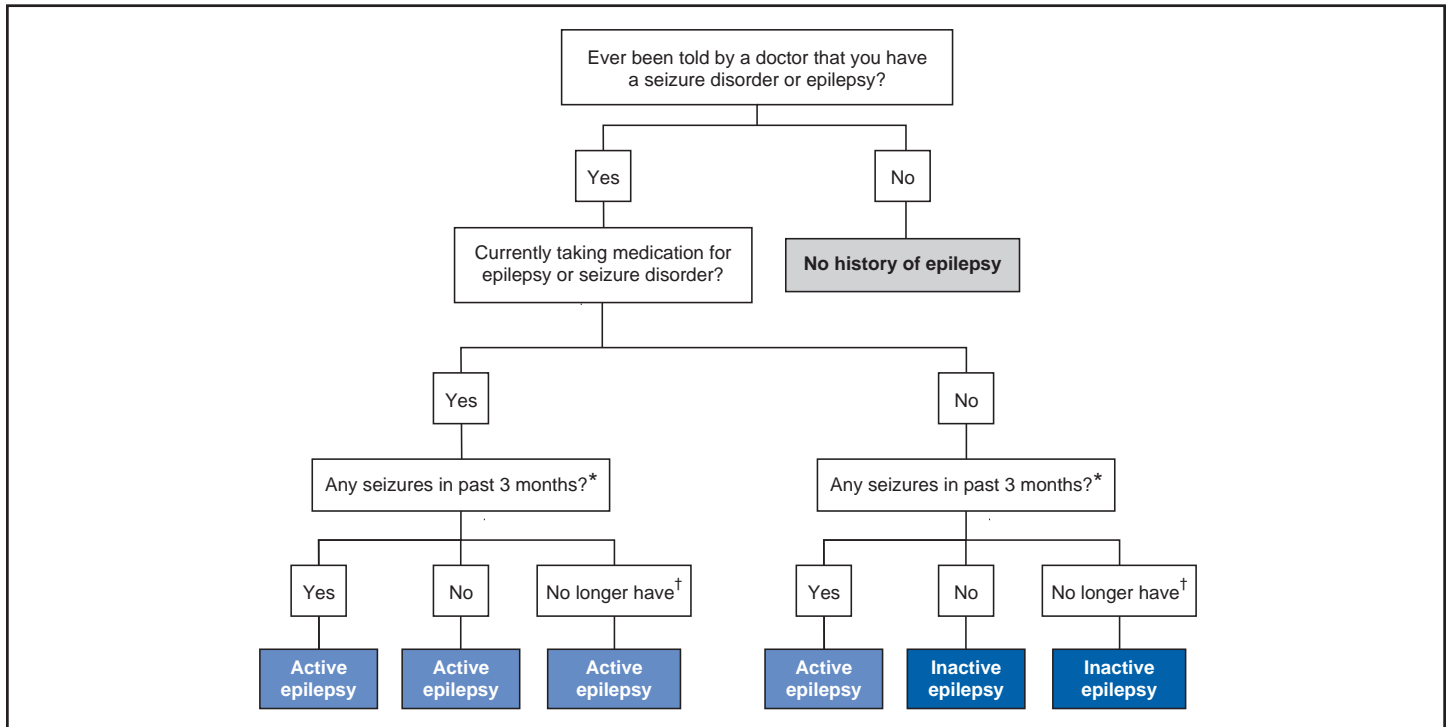
Characteristics of Adults with a History of Epilepsy

Of persons ever told they had epilepsy (i.e., persons with a history of epilepsy), 55.9% were women, and half were aged 35–44 (22.0%) to 45–54 years (22.7%); in addition, 74.1% were white, 8.8% were black, 11.2% were Hispanic, and 6.0% were of another race/ethnicity (Table 2). Compared with those without the disorder, a greater percentage of adults with a history of epilepsy had lower levels of education and income. A smaller percentage of persons with a history of epilepsy were married or part of an unmarried couple and a greater percentage were formerly married compared with those without the disorder.

A smaller percentage of persons with a history of epilepsy were employed (45.8%) and a greater percentage (23.7%) were unable to work than those without epilepsy (61.6% and 4.8%, respectively) (Table 2). Nearly the same percentages of those with (17.0%) and without (16.3%) a history of epilepsy did

[§] The percentage of persons who completed interviews among all eligible persons contacted.

FIGURE. Definitions of active and inactive epilepsy — Behavioral Risk Factor Surveillance System, 2005



* Respondents were asked "How many seizures have you had in the last 3 months?" with response options of "none," "one," "more than one," "no longer have epilepsy or seizure disorder," "don't know," and "refused."

† Approximately 1% of respondents reported no longer having epilepsy but also reported taking medication, thus remained classified as having active epilepsy cases. Approximately 11% of respondents reported no longer having epilepsy and reported not taking medication and were classified as having inactive epilepsy.

not have health-care insurance. However, 23.7% of those with a history of epilepsy reported not being able to see a doctor in the past year because of the cost, compared with 13.4% of those without the disorder. A total of 69.0% of persons with a history of epilepsy reported having a checkup within the past year, a proportion similar to that in the general population.

A significantly greater percentage of persons with a history of epilepsy were classified as obese compared with those with no history of epilepsy (30.1% versus 24.0%, respectively). A greater percentage of persons with a history of epilepsy were current smokers compared with those without the disorder (30.1% versus 20.9%, respectively) (Table 2). A total of 33.5% of persons with a history of epilepsy reported no exercise in the past 30 days compared with 24.5% of those without the disorder, and 37.0% of persons with a history of epilepsy reported fair or poor health, compared with 15.8% of those without the disorder (Table 2). In addition, 13.6% of those with a history of the disorder reported rarely or never receiving the emotional support they needed, compared with 8.0% of those without the disorder (Table 2). A total of 16.6% of those with a history of epilepsy reported being dissatisfied or very dissatisfied with their life, compared with 5.4% of those without the disorder (Table 2).

Classification of Active and Inactive Epilepsy

Among adults with a history of epilepsy, 48.8% reported currently taking medication to control their disorder (Table 3). Of those with a history of epilepsy, 15.0% reported having more than one seizure in the past 3 months; 8.1% had one seizure, and 71.0% had no seizures in the past 3 months (Table 3). A total of 5.9% of those with a history of epilepsy reported no longer having the disorder (self-determined) in response to the question on seizure frequency (Figure, Table 3).

Of those classified with active epilepsy, 55.1% reported having had no seizures in the past 3 months, 15.3% reported one seizure, and 28.6% reported more than one seizure; in addition, 6.9% of those classified with active epilepsy reported not taking medication for their seizure disorder but having had recent seizures. Although 1.0% of adults with active epilepsy reported no longer having the disorder, they were classified as having active epilepsy because they also reported currently taking medication (Figure, Table 3). Among adults with active epilepsy and recent seizures, 16.1% reported not taking medication for their disorder, and 34.9% reported having had one seizure in the past 3 months, with 65.1% having

had more than one seizure (Table 3). A total of 34.9% of adults with active epilepsy with recent seizures reported not seeing a neurologist or epilepsy specialist in the past year (Table 3). Among adults with active epilepsy and no recent seizures, 40.6% reported not having seen a neurologist or epilepsy specialist in the past year.

Among persons with active epilepsy with recent seizures, 32.9% reported that epilepsy or its treatment limited their abilities in the past month “quite a bit or extremely” compared with 7.6% among those with no recent seizures.

Characteristics of Adults Classified with Active Epilepsy

Prevalence estimates for active and inactive epilepsy reveal no differences by sex or race/ethnicity (Table 4). Differences in prevalence occurred by age (e.g., 35–54 years versus 18–24 years); however, these differences should be interpreted with caution because of the small sample sizes in certain age groups.

Among persons with active epilepsy, 56.4% were women, and half were aged 35–54 years (22.1% aged 35–44 years, 26.1% aged 45–54 years) (Table 5). A total of 80.4% of adults with active epilepsy were white, 11.0% were black, and 5.5% were Hispanic. A significantly greater percentage of those with active epilepsy reported not completing high school, compared with adults without the disorder, and a smaller percentage of adults with active epilepsy reported having some college education (Table 5). Similar percentages with respect to educational attainment occurred among those with inactive epilepsy.

A total of 47.7% of adults with active epilepsy and 40.7% of those with inactive epilepsy reported an annual household income of <\$25,000, compared with 26.5% of adults without the disorder. A significantly smaller percentage of persons with active epilepsy were married or part of an unmarried couple than those without the disorder, and a greater percentage of those with active epilepsy were formerly married compared with those without the disorder (Table 5).

Among adults with active epilepsy, 9.8% were unemployed, compared with 5.4% in those without a history of epilepsy. A total of 31.3% of those with active epilepsy and 15.4% of those with inactive epilepsy reported being unable to work, compared with 4.9% of those without the disorder (Table 5).

Fair or poor health was reported by 48.5% of adults with active epilepsy and 28.5% of those with inactive epilepsy, both significantly more than the 15.8% of adults without the disorder (Table 6). A significantly greater percentage of adults with inactive epilepsy reported not having health-care insurance (23.9%) compared with those with active epilepsy (10.9%) or those without the disorder (14.1%). From 63.1% to 71.5% of adults in these three groups reported having had

a checkup within the past 2 years. However, a significantly greater percentage of adults with active epilepsy reported not being able to see a doctor in the past 12 months because of the cost.

A total of 32.2% of adults with active epilepsy and 31.9% of those with inactive epilepsy were classified as obese, compared with 23.3% of adults without the disorder (Table 6). A significantly smaller percentage of adults with active epilepsy (60.7%) reported any exercise in the past 30 days compared with adults without the disorder (75.4%). Among those with active epilepsy or inactive epilepsy, 32.4% and 32.0% were current smokers, respectively, compared with 21.6% of those without the disorder. A smaller percentage of adults with active epilepsy (30.4%) reported drinking any alcohol in the past month than those without the disorder (53.4%).

A greater percentage of adults with active epilepsy (15.7%) and inactive epilepsy (7.3%) reported having had a stroke than those with no history of the disorder (2.4%). Eight percent of adults with active epilepsy reported having heart disease, compared with 4.8% of those with inactive epilepsy. Twenty percent of adults with active epilepsy reported having asthma, approximately twice the proportion among those with inactive epilepsy or without the disorder. A greater percentage of adults with active epilepsy (13.0%) and inactive epilepsy (14.9%) reported being told they had diabetes compared with those with no history of the disorder (7.7%). A significantly greater percentage of adults with active epilepsy or inactive epilepsy reported being told they had arthritis and reported current joint pain than those without the disorder (Table 6).

A total of 21.6% of adults with active epilepsy reported getting the recommended 5 servings of fruits and vegetables a day, similar to those with inactive epilepsy (27.4%) and those without the disorder (26.4%). Approximately the same percentages of adults with and without the disorder reported receiving a flu shot in the past year.

A significantly greater percentage of adults with active epilepsy reported rarely or never getting the emotional support they needed (19.1%) than those without the disorder (7.6%). In addition, a greater percentage of those with active epilepsy were dissatisfied or very dissatisfied with their life (18.8%) than those without the disorder (5.7%) (Table 6).

Sex and age were not associated with increased or decreased risk for active epilepsy with recent seizures (Table 7). However, a significantly greater percentage of Hispanics (79.2%) reported recent seizures than did whites (40.0%), and a greater percentage of persons with active epilepsy at the lowest annual household income level (57.3%) reported recent seizures than persons with epilepsy at the highest annual household income level (20.9%). Similarly, a greater percentage of adults with active epilepsy who were unemployed or unable

to work (59.2%) reported recent seizures than adults with epilepsy who were employed (33.2%) or other groups (33.5%).

Health-Related Quality of Life

Compared with adults with no history of the disorder, adults with a history of epilepsy reported significantly more mentally unhealthy days (7.3 versus 3.2), physically unhealthy days (9.1 versus 3.5), overall unhealthy days (13.0 versus 5.9), and activity-limitation days (6.8 versus 2.1) (Table 8). Compared with those with no history of epilepsy, adults with active epilepsy reported significantly more mentally unhealthy days (9.3 versus 3.4), physically unhealthy days (10.7 versus 3.6), overall unhealthy days (15.1 versus 6.1), and activity-limitation days (8.4 versus 2.2) (Table 8). Similarly, adults with inactive epilepsy reported more mentally unhealthy days, physically unhealthy days, overall unhealthy days, and activity-limitation days than those with no history of the disorder (Table 8). Adults with active epilepsy with recent seizures reported significantly more physically unhealthy days than those with no recent seizures (13.1 versus 8.8) and more activity-limitation days (11.1 versus 6.4) than those with no recent seizures.

Discussion

Population-based epidemiological studies of epilepsy are important for policymakers and health-care providers to plan and provide prevention programs and appropriate care and services for those affected (1,10). Adults with a history of epilepsy and with active epilepsy were more likely to report negative health outcomes, and they face substantial socioeconomic disadvantages such as unemployment and low household income. In addition, these findings highlight the substantial adverse effects of recurring seizures on daily activities and HRQOL in adults with epilepsy. However, because of the cross-sectional nature of BRFSS, no causality among the associations found can be inferred.

Although prevalence estimates differed among certain states, these differences might have been a result of random error associated with response rates, response bias, or multiple comparisons. The estimates of persons who were ever told they had epilepsy (i.e., lifetime prevalence) and active epilepsy are comparable to previous estimates from the 1998 Texas BRFSS (lifetime prevalence, 1.8%), 2002 Georgia BRFSS (lifetime prevalence, 1.7%), and 2003 and 2004 South Carolina BRFSS surveys (lifetime prevalence, 2.2%; active epilepsy, 1.1%) and with estimates from the 2003 CHIS (lifetime prevalence, 1.2%; active epilepsy, 0.7%) (13–16). The active epilepsy estimate of 0.8% also is comparable to results from a recent study of a

managed care population (0.7%); a 1978 door-to-door survey of all household and institutionalized residents in Copiah County, Mississippi (1%); and a community-based study of diagnostic records for 5 decennial census years in Minnesota (0.7%) (21–23).

Despite methodologies that differed from those used in other studies, self-reports of medication use and seizure frequency from this study were comparable to findings from the 2003 CHIS (16), the 2003 and 2004 South Carolina BRFSS surveys (14), the 2004 HealthStyles Survey (17), and Copiah County, Mississippi (22). For example, in California, 10% of adults with active epilepsy reported not taking any medication for their seizure disorder, and 29% reported having had more than one seizure during the past 3 months (16).

The finding in this report that epilepsy prevalence was lower among older adults differs from findings in other studies that have shown an increased prevalence with increased age (23); however, this study excluded institutionalized older adults from BRFSS, which might have resulted in the lower estimate. Like this study, other U.S. studies have not found consistent differences in the prevalence of epilepsy by sex or by race (15–17,22–26).

Findings from this study regarding educational attainment, employment, marital status, and household income among persons with a history of epilepsy are comparable to those from other U.S. studies based on convenience samples of persons with epilepsy and with longitudinal studies in Canada and Europe (27–29). Researchers who conducted cohort studies of children with epilepsy found a higher prevalence of psychosocial problems, unemployment, and financial dependency and lower levels of education at adulthood compared with controls and suggested that ongoing psychosocial support is needed for children with epilepsy as they transition into adulthood (27). The higher percentages of adults with epilepsy at lower levels of education and income in this study are consistent with findings from the 2002 Georgia BRFSS and 2002 Tennessee BRFSS, which found that 22% of adults with a history of epilepsy did not complete high school and 44% had an annual household income of <\$25,000; in addition, in the 2003 CHIS, 45% of Californians with epilepsy reported an annual household income <\$25,000 (15,16). However, the results of this study indicate that although nearly half of adults with active epilepsy in 2005 had completed some college or more, many of these adults remained at lower household income levels. For example, 32% (CI = 22.7–42.7) of adults with active epilepsy who either had some college experience or completed college reported an annual household income of <\$25,000, although only 15% (CI = 14.5–15.9) of adults with no history of the disorder and comparable education reported an income of <\$25,000. Epilepsy and its treatment

can impair cognition, limiting academic achievement in some students with epilepsy (30,31), which might contribute to the lower educational attainment among adults with epilepsy. Lower levels of household income might be associated with periods of unemployment, disability status, or other factors unaccounted for in this study. Because these data are cross-sectional, no causal associations between epilepsy and lower levels of education and income can be inferred. The finding of lower rates of marriage and partnership in this analysis among adults with a history of epilepsy is similar to findings from the 2003 CHIS, in which only 45% of adults with epilepsy were married, compared with 55% of adults without the disorder (16). This might result from decreased social opportunities among some persons with epilepsy (e.g., from limited access to transportation or to certain educational or occupational opportunities) or from stigma associated with the disorder (11,32). In addition, a higher percentage of adults with a history of epilepsy reported being formerly married compared with those without the disorder, which might be a result of the challenges of living with a chronic condition and the strain it might have on close relationships (33,34). Higher rates of divorce were found among persons with a history of epilepsy who did not disclose their epilepsy before marriage (35,36) and among those whose seizures had remitted (37).

Persons with a history of epilepsy and active epilepsy are more likely than those without such histories to be obese, physically inactive, and current smokers (15,16). The stress of living with a chronic disorder such as epilepsy, including its social limitations, might encourage unhealthy coping behaviors (e.g., smoking and poor diet) and discourage healthy behaviors (e.g., physical activity). Persons with a history of epilepsy experience more depression and anxiety than those without the disorder; these common comorbid conditions are associated with unhealthy coping behaviors (38–40). In addition, certain anticonvulsant medications can cause sedation and lethargy, which might impede physical activity, whereas others can stimulate appetite, resulting in weight gain (41,42). Although persons with epilepsy historically have been discouraged from participating in physical activity because of concerns about inducing seizures or sustaining injuries associated with seizures, physical activity can improve seizure control, mood, and quality of life (43,44). Although persons with epilepsy should avoid physical injuries, many can benefit from daily physical activity such as walking (44–46).

The higher reported prevalence of obesity, physical inactivity, and current smoking among persons with a history of epilepsy might be a factor in the higher reported prevalence of self-reported heart disease, stroke, diabetes, and arthritis among these persons. In addition, certain underlying brain disorders can lead to decreased mobility and epilepsy. Other studies have

found higher prevalence of comorbid illnesses in persons with epilepsy compared with the general population (47,48). Epilepsy and its treatment have been associated with co-occurring disorders and disease risk factors (e.g., cerebrovascular and cardiovascular disorders, obstructive sleep apnea, and depression) (47–58). Because certain comorbid conditions might occur before epilepsy onset, occur simultaneously with epilepsy onset, or result from the condition or its treatment, additional studies are required to identify causal associations and shared disease pathways (47–58). Physicians treating persons with epilepsy should screen for and treat these chronic disease comorbidities and their risk factors (58,59). When recommending treatment options, health-care providers also should consider the effects of antiepileptic drugs on risk factors (e.g., weight gain, mood disorders, and sleep problems) and health status (41,42,57,60,61). In addition, general health-promotion information (e.g., smoking cessation, physical activity and healthy diet, and heart disease prevention) might be useful for providers and Epilepsy Foundation affiliates to distribute to patients with epilepsy.

The findings in this study regarding inadequate seizure control by medications might partly be a result of limited knowledge of current diagnostic and treatment standards for the care of epilepsy among certain groups of health care professionals (62,63). Clinical tools and guidelines recommended for epilepsy care are available to improve clinical evaluation and services for patients with epilepsy (59,64,65). Inadequate seizure control might also arise, in part, from the difficulties with maintaining therapy regimens. Epilepsy medication regimens typically require multiple daily doses (and sometimes multiple drugs) that must be taken consistently; patients can have difficulty strictly adhering to these requirements, resulting in seizure recurrence. Lapses in treatment adherence also might arise among patients with discontinuous or inadequate health insurance coverage when such patients are unable to afford medication. Finally, nearly 40% of epilepsy cases with partial seizures are considered refractory (i.e., resistant to medical therapy), resulting in occasional or frequent seizure recurrences despite optimal treatment with antiepileptic drugs (64).

Persons with epilepsy might have difficulties finding and navigating through health-care and public services that could be helpful. Collaborative care models such as the chronic care model (66–69) also might improve health outcomes for persons with epilepsy. For example, the Awareness and Access to Care for Children and Youth with Epilepsy (AACYE) initiative focuses on timely clinical follow-up care with medical specialists, including screening and referral for behavioral and mental health needs, and an individualized patient- and family-centered care plan (70). Community-based strategies (e.g., that include public transportation or telemedicine) that provide

hard-to-reach persons with epilepsy with access to social services might also be helpful; these strategies have been effective for persons with complex chronic conditions (71–73).

Adults with a history of epilepsy reported substantially worse self-rated health and HRQOL, more dissatisfaction with emotional support received, and more overall dissatisfaction with life than adults without the disorder. Depression has been shown to be one of the strongest predictors of quality of life in persons with epilepsy (64). Although this analysis could not control for confounding effects of depression on HRQOL, a recent similar study found that adjusting for covariates such as race/ethnicity and income and chronic disease comorbidity made no difference in HRQOL estimates in persons with self-reported epilepsy or active epilepsy (16).

Adults with inactive epilepsy also reported worse HRQOL than those without the disorder, consistent with previous findings (14,16). A diagnosis of epilepsy earlier in life, despite its resolution or remission, can still interfere with later life opportunities and alter perceptions of health status (27,74–76). In addition, some persons with epilepsy who achieve a reduction in number of seizures or complete seizure remission continue to experience psychosocial distress associated with unmet or unrealistic life expectations (76).

The results of this study are subject to at least seven limitations. First, the data are self-reported and subject to recall bias and response bias. However, the estimates collected for several years are in general agreement, indicating these types of bias might be minimal (13–17). Second, because the survey is cross-sectional, no causal associations among variables can be inferred. Third, the reported cases of epilepsy are not classified by seizure type, severity, or etiology, and certain acute symptomatic seizures or nonepileptic seizures (NESs) might have been misclassified as epilepsy. However, given the small percentages of adults with NESs, significant skewing of results because of these cases is unlikely (77). In addition, many adults with NESs also have epileptic seizures, making such distinctions less likely to substantially skew results (78,79). Fourth, the higher number of days of impaired HRQOL in persons with inactive epilepsy compared with those without the disorder might also have resulted from the case definition, which was based on a 3-month recall period for seizure frequency and is more conservative than the 5-year recall period recommended by the International League Against Epilepsy (ILAE) (4). Thus, some inactive cases in this study would have been classified as active cases using the ILAE definition. The case definition in this study was used to minimize difficulties in respondent recall of potentially numerous seizures over a lengthy interval, whereas the ILAE approach is designed for epidemiologic studies based on record review. Fifth, the analysis was unable to control for the possible effects of mood disorder

on HRQOL in this study. Investigators might be able to do so in future BRFSS studies using data from states that included the Patient Health Questionnaire Survey or the Kessler-6 Psychological Distress scale along with the epilepsy questions (18). Sixth, epilepsy prevalence might be underestimated because of underreporting resulting from the stigma associated with disclosing epilepsy and because BRFSS methodology excludes institutionalized adults. Finally, BRFSS excludes households without landline telephones. However, the National Center for Health Statistics found that the percentage of households without landline phones is still low, and bias for persons who used cellular telephones exclusively was associated with select sociodemographic factors (80).

CDC-supported Prevention Research Centers (PRCs) are conducting community-based research on self-management and depression prevention to improve health outcomes in persons with epilepsy (81–83). Pilot testing of WebEase (Web Epilepsy Awareness, Support, and Education), an Internet-based program that is focused on behavioral change theory and tailored communication strategies, found significant improvements in overall self-management and other health outcomes among adults with epilepsy (84,85).

Although this study identified effects of epilepsy on persons in several states, additional descriptive and analytic studies of epilepsy occurrence in various U.S. communities and populations are needed. CDC is supporting the development of international standards for studies of epilepsy incidence and prevalence. Such research will better characterize epilepsy incidence rates, risk factors and etiologies, types, severity, associated conditions, and disability (1,10).

The Association of State and Territorial Chronic Disease Directors endorsed a role for state public health departments in developing epilepsy surveillance capacity and establishing strong working relationships with other government agencies and with nongovernmental lay and professional groups (86). State and local public health agencies can work with their local Epilepsy Foundation affiliates, other groups such as the Epilepsy Therapy Project (available at <http://www.epilepsy.com>) that support persons with epilepsy and their families, and social service agencies to promote awareness and reduce social stigma, provide community and professional education about epilepsy, address employment and transportation needs, and provide referral and support for health promotion and disease prevention for persons with epilepsy (86–91).

References

1. World Health Organization. Neurological disorders: public health challenges. Available at http://www.who.int/mental_health/neurology/neurodiso/en/index.html.

2. Hirtz D, Thurman DJ, Gwinn-Hardy K, Mohammed M, Chaudhuri AR, Zalutsky R. How common are the "common" neurological disorders? *Neurology* 2007;68:326–37.
3. National Epilepsy Foundation. Epilepsy and seizure statistics. Available at <http://www.epilepsyfoundation.org/about/statistics.cfm>.
4. International League Against Epilepsy, Commission on Epidemiology and Prognosis. Guidelines for epidemiologic studies on epilepsy. *Epilepsia* 1993;34:59–96.
5. Hauser WA, Annegers JF, Kurland LT. Incidence of epilepsy and unprovoked seizures in Rochester, Minnesota: 1935–1984. *Epilepsia* 1993;34:453–68.
6. Fisher RS, Schachter SC. The postictal state: a neglected entity in the management of epilepsy. *Epilepsy Behav* 2000;1:52–9.
7. Johnston A, Smith P. Sudden unexpected death in epilepsy. *Expert Rev Neurother* 2007;7:1751–61.
8. Baker GA. The psychosocial burden of epilepsy. *Epilepsia* 2002;43:26–30.
9. Morrell MJ. Stigma and epilepsy. *Epilepsy Behav* 2002;3(Suppl 2):S21–S25.
10. Theodore WH, Spencer SS, Wiebe S, et al. Epilepsy in North America: a report prepared under the auspices of the Global Campaign Against Epilepsy, the International Bureau for Epilepsy, the International League Against Epilepsy, and the World Health Organization. *Epilepsia* 2006;1–23.
11. Jacoby A. Stigma, epilepsy, and quality of life. *Epilepsy Behav* 2002;3(Suppl 2):S10–S20.
12. Sirven JI, Lopez RA, Vazquez B, Van Haverbeke P. Que es la epilepsia? Attitudes and knowledge of epilepsy by Spanish-speaking adults in the United States. *Epilepsy Behav* 2005;7:259–65.
13. CDC. Health-related quality of life among persons with epilepsy—Texas, 1998. *MMWR* 2001;50:24–6.
14. CDC. Prevalence of epilepsy and health-related quality of life and disability among adults with epilepsy—South Carolina, 2003 and 2004. *MMWR* 2005;54:1080–2.
15. Kobau R, DiIorio CA, Price PH, et al. Prevalence of epilepsy and health status of adults with epilepsy in Georgia and Tennessee: Behavioral Risk Factor Surveillance System, 2002. *Epilepsy Behav* 2004;5:358–66.
16. Kobau R, Zahran H, Grant D, Thurman DJ, Price PH, Zack MM. Prevalence of active epilepsy and health-related quality of life among adults with self-reported epilepsy in California: California Health Interview Survey, 2003. *Epilepsia* 2007;48:1904–13.
17. Kobau R, Gilliam F, Thurman DJ. Prevalence of self-reported epilepsy or seizure disorder and its associations with self-reported depression and anxiety: results from the 2004 HealthStyles Survey. *Epilepsia* 2006;47:1915–21.
18. CDC. Behavioral Risk Factor Surveillance System. Available at <http://www.cdc.gov/brfss>.
19. Moriarty DG, Zack MM, Kobau R. The Centers for Disease Control and Prevention's Healthy Days measures—population tracking of perceived physical and mental health over time. *Health Qual Life Outcomes* 2003;1:1–8.
20. CDC. 2005 Behavioral Risk Factor Surveillance System summary data quality report. Available at http://www.cdc.gov/brfss/technical_infodata/quality.htm.
21. Holden EW, Nguyen HT, Grossman E, et al. Estimating prevalence, incidence, and disease-related mortality for patients with epilepsy in managed care organizations. *Epilepsia* 2005;46:311–9.
22. Haerer AF, Anderson DW, Schoenberg BS. Prevalence and clinical features of epilepsy in a biracial United States population. *Epilepsia* 1986;1:66–75.
23. Hauser WA, Annegers JF, Kurland LT. Prevalence of epilepsy in Rochester, Minnesota: 1940–1980. *Epilepsia* 1991;32:429–45.
24. CDC. Prevalence of self-reported epilepsy. *MMWR* 1994;43:810–2.
25. Annegers JF, Dubinsky S, Coan SP, Newmark ME, Roht L. The incidence of epilepsy and unprovoked seizures in multiethnic, urban health maintenance organizations. *Epilepsia* 1999;40:502–6.
26. Kelvin EA, Hesdorffer DC, Bagiella E, et al. Prevalence of self-reported epilepsy in a multiracial and multiethnic community in New York City. *Epilepsy Res* 2007;77:141–50.
27. Camfield CS, Camfield PR. Long-term social outcomes for children with epilepsy. *Epilepsia* 2007;48:3–5.
28. Fisher RS, Vickrey BG, Gibson P, et al. The impact of epilepsy from the patient's perspective I. Descriptions and subjective perceptions. *Epilepsy Res* 2000;41:39–51.
29. Fisher RS. Epilepsy from the patient's perspective: review of results from a community-based survey. *Epilepsy Behav* 2000;1:S9–S14.
30. Aldenkamp AP, Alpherts WC, Dekker MJ, Overweg J. Neuropsychological aspects of learning disabilities in epilepsy. *Epilepsia* 1990;31(Suppl 4):S9–S20.
31. Tromp SC, Weber JW, Aldenkamp AP, Arends J, vander Linden I, Diepman L. Relative influence of epileptic seizures and epilepsy syndrome on cognitive function. *J Child Neurol* 2003;18:407–12.
32. Jones EE, Farina A, Hastorf AH, Markus H, Miller DT, Scott RA. The dimensions of stigma. In: Atkinson RC, Lindzey G, Thompson RF, eds. *Social stigma: the psychology of marked relationships*. New York, NY: WH Freeman and Company; 1984.
33. Thompson PJ, Upton D. The impact of epilepsy on the family. *Seizure* 1992;1:43–8.
34. Tyerman AD, Hobbs L, Measures AC. Quality of life in family members of persons with chronic neurological disability. In: *Epilepsy and quality of life*. Trimble MR, Dodson WE, eds. New York, NY: Raven Press; 1994:33–48.
35. Satosh D, Kumar TS, Sarma PS, Radhakrishnan K. Women with onset of epilepsy prior to marriage: disclosure or conceal? *Epilepsia* 2007;48:1007–10.
36. Wada K, Iwasa H, Okada M, et al. Marital status of patients with epilepsy with special reference to the influence of epileptic seizures on the patient's married life. *Epilepsia* 2004;45(Suppl 8):33–6.
37. Carran MA, Kohler CG, O'Connor MJ, Cloud B, Sperling MR. Marital status after epilepsy surgery. *Epilepsia* 1999;40:1755–60.
38. Bandura AS. Depression. In: *Self-efficacy: the exercise of control*. New York, NY: WH Freeman and Company; 1997:319–57.
39. Linde JA, Jeffery RW, Levey RL, et al. Binge eating disorder, weight control self-efficacy, and depression in overweight men and women. *Int J Obes Relat Metab Disord* 2004;28:418–25.
40. Murphy JM, Horton NJ, Monson RR, Laird NN, Sobol AM, Leighton AH. Cigarette smoking in relation to depression: historical trends from the Stirling County Study. *Am J Psychiatry* 2003;160:1663–9.
41. El-Khatibe F, Rauchenzauner M, Lechleitner M, et al. Valproate, weight gain and carbohydrate craving: a gender study. *Seizure* 2007;16:226–32.
42. Ben-Menachem E. Weight issues for people with epilepsy—a review. *Epilepsia* 2007;48:42–5.
43. Howard GM, Radloff M, Sevier TL. Epilepsy and sports participation. *Curr Sports Med Rep* 2004;3:15–9.

44. Dubow JS, Kelly JP. Epilepsy in sports and recreation (review). *Sports Med* 2003;33:499–516.
45. Fountain NB, May AC. Epilepsy and athletics. *Clin Sports Med* 2003;22:605–16.
46. US Department of Health and Human Services. Healthy people 2010 (conference ed, in 2 vols). Washington, DC: US Department of Health and Human Services; 2000. Available at <http://www.healthypeople.gov>.
47. Weibe S, Hesdorffer DC. Epilepsy: being ill in more ways than one. *Epilepsy Curr* 7;145–8.
48. Gaitatzis A, Carroll K, Majeed A, Sander J. The epidemiology of the comorbidity of epilepsy in the general population. *Epilepsia* 2004;45:1613–22.
49. Malow BA. The interaction between sleep and epilepsy. *Epilepsia* 2007;48(Suppl 9):36–8.
50. Hollinger P, Khatami R, Gugger M, Hess CW, Bassetti CL. Epilepsy and obstructive sleep apnea. *Eur Neurol* 2006;55:74–9.
51. Chihorek AM, Abou-Khalil B, Malow BA. Obstructive sleep apnea is associated with seizure occurrence in older adults with epilepsy. *Neurology* 2007;69:1823–7.
52. Camilo O, Goldstein LB. Seizures and epilepsy after ischemic stroke. *Stroke* 2004;35:1769–75.
53. Burn J, Dennis M, Bamford J, Sandercock P, Wade D, Warlow C. Epileptic seizures after a first stroke: the Oxfordshire Community Stroke Project. *BMJ* 1997;315:1582–7.
54. Bladin CF, Alexandrov AV, Bellavance A, et al. Seizures after stroke: a prospective multicenter study. *Arch Neurol* 2000;57:1617–22.
55. Kanner AM, Balabanov A. Depression and epilepsy: how closely related are they? *Neurology* 2002;58:S27–S39.
56. Kanner AM. Depression in epilepsy: a neurobiologic perspective. *Epilepsy Curr* 2005;5:21–7.
57. Herman ST. Epilepsy and sleep. *Curr Treat Options Neurol* 2006;4:271–9.
58. Gilliam FG, Mediratta A, Pack Am, Bazil CW. Epilepsy and common comorbidities: improving the outpatient epilepsy encounter. *Epileptic Disord* 2005;7:S27–S33.
59. Pugh MJV, Berlowitz DR, Montouris G, et al. What constitutes high quality of care for adults with epilepsy? *Neurology* 2007;69:2020–7.
60. Reijs R, Aldenkamp AP, DeKrom M. Mood effects of antiepileptic drugs. *Epilepsy Behav* 2004;5(Suppl 5):S66–S76.
61. Ketter TA, Post RM, Theodore WH. Positive and negative psychiatric effects of antiepileptic drugs in patients with seizure disorders. *Neurology* 1999;53:S53–S67.
62. Morrell MJ, Sarto GE, Shafer PO, Borda EA, Herzog A, Callanan M. Health issues for women with epilepsy: a descriptive survey to assess knowledge and awareness among healthcare providers. *J Womens Health Gend Based Med* 2000;9:959–65.
63. Sirven, JI. Acute and chronic seizures in patients older than 60 years. *Mayo Clin Proc* 2002;175–83.
64. Gilliam F. Optimizing health outcomes in active epilepsy. *Neurology* 2002;58(Suppl 8):S9–S19.
65. Agency for Healthcare Research and Quality. Management of newly diagnosed patients with epilepsy: a systematic review of the literature summary. Evidence report/technology assessment: number 39. Available at: <http://www.ahrq.gov/clinic/epcsums/epilepsum>.
66. Bodenheimer T, Wagner EH, Grumbach K. Improving primary care for patients with chronic illness: the chronic care model, part 2. *JAMA* 2002;288:1909–14.
67. von Korff M, Gruman J, Schaefer J, Curry SJ, Wagner EH. Collaborative management of chronic disease. *Ann Intern Med* 1997;127:1097–102.
68. Gruman J, von Korff M, Reynolds J, Wagner EH. Organizing health care for people with seizures and epilepsy. *J Ambul Care Manage* 1998;21:1–17.
69. Roumie CL, Elasy TA, Greevy R, et al. Improving blood pressure control through provider education, provider alerts, and patient education: a cluster randomized trial. *Ann Intern Med* 2006;145:165–75.
70. National Initiative for Children's Healthcare Quality. Awareness and access to care for children with epilepsy. Available at <http://www.nichq.org/nichq/programs/collaborativelearning/epilepsy2005.htm>.
71. Holman H, Lorig K. Patient self-management: a key to effectiveness and efficiency in care of chronic disease. *Public Health Rep* 2004;119:239–43.
72. Rasmussen KA, Hartshorn JC. A comparison of epilepsy patients in a traditional ambulatory clinic and a telemedicine clinic. *Epilepsia* 2005;46:767–70.
73. Woods K, Kutiar A, Grigsby RK, Adams L, Stachura ME. Primary-care delivery for sickle cell patients in rural Georgia using telemedicine. *Telemed J* 1998;4:353–61.
74. Bailis DB, Segall A, Chipperfield JG. Two views of self-rated general health status. *Soc Sci Med* 2003;56:203–17.
75. Shackleton DP, Kasteleijn-Nolst Trenite DG, de Craen AJ, Vandenbroucke JP, Westendorp RG. Living with epilepsy: long-term prognosis and psychosocial outcomes. *Neurology* 2003;61:64–70.
76. Wilson SJ, Bladin PF, Saling MM. Paradoxical results in the cure of chronic illness: the “burden of normality” as exemplified following seizure surgery. *Epilepsy Behav* 2004;5:13–21.
77. Alsaadi TM, Marquez AV. Psychogenic nonepileptic seizures. *Am Fam Phys* 2005;72:851–5.
78. Devinsky O, Sanchez-Villasenor F, Vazquez B, Kothari M, Alper K, Luciano D. Clinical profile of patients with epileptic and nonepileptic seizures. *Neurology* 1996;46:1530–3.
79. Henry TR, Drury I. Non-epileptic seizures in temporal lobectomy candidates with medically refractory seizures. *Neurology* 1997;48:1374–82.
80. Blumberg S, Luke JV, Cynamon ML. Telephone coverage and health survey estimates: evaluating the need for concern about wireless substitution. *Am J Public Health* 2006;96:926–31.
81. CDC. Epilepsy. Available at <http://www.cdc.gov/epilepsy>.
82. Pramuka M, Hendrickson R, Zinski A, Van Cott AC. A psychosocial self-management program for epilepsy: A randomized pilot study in adults. *Epilepsy Behav* 2007;11:533–45.
83. DiIorio C, Escoffery, C, Yeager KA, et al. WebEase: using theory to develop a web-based epilepsy self-management intervention. *Prev Chronic Dis*. In press 2008.
84. Escoffery C, DiIorio C, Yeager KA, et al. Use of computers and the Internet for health information by patients with epilepsy. *Epilepsy Behav* 2007;12:109–14.
85. DiIorio C, Escoffery C, McCarty F, et al. Evaluation of WebEase: an epilepsy self-management website. *Health Educ Res*. In press 2008.
86. Association of State and Territorial Chronic Disease Directors. The role of public health in addressing lower prevalence chronic conditions: the example of epilepsy. Association of State and Territorial Chronic Disease Directors; 2003. Available at http://www.chronicdisease.org/files/public/epilepsy_report.pdf.

87. Epilepsy.com. Epilepsy therapy project. Available at <http://www.epilepsy.com>.
88. Epilepsy Foundation. Children and teens: education. Available at <http://www.epilepsyfoundation.org/living/children/education>.
89. Varekamp I, Verbeek JH, van Dijk FJ. How can we help employees with chronic diseases to stay at work? A review of interventions aimed at job retention and based on an empowerment perspective. *Int Arch Occup Environ Health* 2006;80:87–97.
90. US Department of Labor. Job accommodations for people with epilepsy. Job Accommodation Network. Available at <http://www.jan.wvu.edu>.
91. Epilepsy Foundation. NoLimits TeleMentoring: people helping people achieve career goals. Available at <http://www.epilepsyfoundation.org/living/wellness/employment/telementoring/telementoring.cfm>.

Acknowledgments

The findings in this report are based, in part, on contributions by the following BRFSS state system coordinators: Brian A. Bender, MBA, Arizona; Fred Breukelman, Delaware; Melissa Murray, MS, Florida; Leah Bryan, MPH, Georgia; Farooq Ghouri, MBBS, MPH, Ghazala Perveen, PhD, Kansas; Tracy Sparks, Kentucky; Ann Rafferty, PhD, Michigan; Janet S. Wilson, MEd, MPA, Missouri; Susan Knight, MPH, New Hampshire; Colleen Baker, New York; Kathryn E. Pickle, Renee K. Boyd, Oregon; Robert F. Dewar, Pennsylvania; Jennifer Chiprich, PhD, South Carolina; David Ridings, Tennessee; Michelle Cook, MPH, Texas; Susan K. Spain, Virginia; Katrina Wynkoop Simmons, PhD, Washington; Anne Ziege, PhD, Wisconsin; and Menlo Futa, Wyoming; and by Laurie Elam-Evans, PhD, Div of Adult and Community Health, National Center for Chronic Disease Prevention and Health Promotion, CDC.

TABLE 1. Prevalence of adults with a history of epilepsy* and estimated prevalence of active and inactive epilepsy,† by state — 19 states, Behavioral Risk Factor Surveillance System, 2005

State	Total sample size	Total with history of epilepsy			Active epilepsy			Inactive epilepsy		
		No.	%	(95% CI)§	No.	%	(95% CI)	No.	%	(95% CI)
Total	120,845	2,207	1.65	(1.52–1.80)	919	0.84	(0.74–0.96)	693	0.75	(0.65–0.86)
Arizona	4,407	61	1.35	(0.84–2.16)	36	0.46¶	(0.27–0.80)	24	0.89¶	(0.46–1.71)
Delaware	4,129	54	1.15	(0.81–1.62)	20	0.43¶	(0.25–0.75)	33	0.69¶	(0.44–1.09)
Florida	7,753	136	1.61	(1.25–2.06)	—	—	—	—	—	—
Georgia	5,783	104	1.71	(1.29–2.27)	59	0.77	(0.55–1.08)	45	0.94	(0.61–1.46)
Kansas	4,211	70	1.75	(1.31–2.34)	—	—	—	—	—	—
Kentucky	6,164	165	2.17	(1.75–2.69)	88	1.14	(0.87–1.50)	74	0.98	(0.69–1.39)
Michigan	11,798	219	1.79	(1.53–2.09)	127	0.96	(0.78–1.18)	90	0.81	(0.63–1.04)
Missouri	4,873	88	1.77	(1.28–2.45)	45	0.71	(0.47–1.07)	41	1.00¶	(0.61–1.63)
New Hampshire	5,731	98	1.61	(1.27–2.05)	—	—	—	—	—	—
New York	3,571	53	1.29	(0.9–1.76)	33	0.87	(0.59–1.28)	20	0.42¶	(0.25–0.70)
Oregon	9,602	183	1.84	(1.55–2.18)	115	1.03	(0.83–1.27)	65	0.78	(0.58–1.05)
Pennsylvania	12,474	207	1.58	(1.28–1.94)	130	0.93	(0.71–1.22)	74	0.64	(0.45–0.89)
South Carolina	7,992	151	1.69	(1.40–2.04)	85	0.88	(0.69–1.12)	66	0.81	(0.61–1.09)
Tennessee	4,427	93	2.07	(1.57–2.73)	54	1.02	(0.74–1.40)	35	0.93¶	(0.58–1.48)
Texas	5,901	102	1.73	(1.29–2.33)	—	—	—	—	—	—
Virginia	5,064	88	1.96	(1.51–2.56)	—	—	—	—	—	—
Washington	7,848	148	1.65	(1.34–2.03)	67	0.69	(0.51–0.94)	79	0.94	(0.71–1.24)
Wisconsin	4,294	80	1.64	(1.26–2.13)	—	—	—	—	—	—
Wyoming	4,823	107	2.20	(1.77–2.73)	60	1.24	(0.93–1.65)	47	0.96	(0.68–1.34)

* Self-reported epilepsy as determined by affirmative response to the question “Have you ever been told by a doctor that you have a seizure disorder or epilepsy?”

† Respondents were classified as having active epilepsy if they responded “yes” to ever having been told by a doctor that they had a seizure disorder or epilepsy and also responded that they either were currently taking medication for epilepsy, had one or more seizures in the preceding 3 months, or both. Respondents were classified as having inactive epilepsy if they responded “yes” to ever having been told by a doctor that they had a seizure disorder or epilepsy but were not taking medication for epilepsy and had not had a seizure in the preceding 3 months. Dashes indicate that the states did not include the questions on epilepsy medication and seizure frequency.

§ Confidence interval.

¶ Relative standard error of the estimate is $\geq 30\%$; estimate is unreliable.

TABLE 2. Number and percentage of adults with and without a history of epilepsy,* by selected characteristics — 19 states,† Behavioral Risk Factor Surveillance System, 2005

Characteristic	Total sample size	With history of epilepsy (n = 2,207)			Without history of epilepsy (n = 118,638)		
		No.	%	(95% CI‡)	No.	%	(95% CI)
Sex							
Male	45,701	805	44.1	(40.0–48.2)	44,896	48.3	(47.7–48.9)
Female	75,144	1,402	55.9	(51.8–60.0)	73,742	51.7	(51.1–52.3)
Age (yrs)							
18–24	6,134	90	12.3	(8.8–17.0)	6,044	12.8	(12.3–13.4)
25–34	15,225	277	18.9	(15.6–22.8)	14,948	17.7	(17.3–18.2)
35–44	21,071	446	22.0	(19.0–25.4)	20,625	19.8	(19.3–20.2)
45–54	24,894	594	22.7	(19.8–26.0)	24,300	18.5	(18.1–18.9)
55–64	22,397	417	12.1	(10.1–14.4)	21,980	13.9	(13.5–14.2)
65–74	17,023	239	7.7	(6.2–9.5)	16,784	9.1	(8.9–9.4)
≥75	13,371	134	4.3	(3.2–5.7)	13,237	8.1	(7.9–8.4)
Race/Ethnicity							
White	99,349	1,786	74.1	(69.4–78.3)	97,563	74.2	(73.7–74.8)
Black	9,451	176	8.8	(6.6–11.5)	9,275	9.4	(9.0–9.7)
Hispanic	6,534	106	11.2	(8.2–15.0)	6,428	11.6	(11.1–12.0)
Other	4,393	107	6.0	(3.5–10.0)	4,286	4.8	(4.6–5.1)
Education							
Less than high school	12,588	323	16.1	(13.2–19.5)	12,265	11.3	(10.9–11.7)
High school graduate	38,475	771	35.7	(31.7–40.0)	37,704	30.1	(29.6–30.6)
Some college or college graduate	69,544	1,112	48.2	(44.1–52.3)	68,432	58.6	(58.1–59.2)
Income							
<\$25,000	31,431	905	40.9	(36.7–45.2)	30,526	26.3	(25.8–26.9)
\$25,000–\$49,999	32,847	511	30.0	(25.6–34.5)	32,336	29.7	(29.2–30.2)
≥\$50,000	39,943	457	29.2	(25.4–33.4)	39,486	43.9	(43.3–44.5)
Marital status							
Married or unmarried couple	70,335	1,083	55.5	(51.3–59.7)	69,252	64.1	(63.6–64.7)
Formerly married	35,015	752	22.9	(20.0–26.2)	34,263	18.0	(17.6–18.3)
Never married	15,115	361	21.5	(17.7–26.0)	14,754	17.9	(17.4–18.4)
Employment status							
Employed	66,323	891	45.8	(41.6–50.0)	65,432	61.6	(61.1–62.1)
Unemployed	4,953	127	6.8	(5.0–9.0)	4,826	5.0	(4.8–5.3)
Unable to work	7,443	593	23.7	(20.5–27.2)	6,850	4.8	(4.6–5.0)
Other (homemaker, student, or retired)	41,808	590	23.7	(20.5–27.3)	41,218	28.6	(28.1–29.0)
Health-care insurance							
Yes	105,833	1,891	83.0	(79.5–86.1)	103,942	83.7	(83.2–84.1)
No	14,697	313	17.0	(13.9–20.5)	14,384	16.3	(15.9–16.8)
Could not visit doctor because of cost							
Yes	15,076	491	23.7	(20.2–27.5)	14,585	13.4	(13.0–13.8)
No	105,510	1,708	76.3	(72.5–79.8)	103,802	86.6	(86.2–87.0)

* Self-reported epilepsy as determined by response to the question "Have you ever been told by a doctor that you have a seizure disorder or epilepsy?"

† Arizona, Delaware, Florida, Georgia, Kansas, Kentucky, Michigan, Missouri, New Hampshire, New York, Oregon, Pennsylvania, South Carolina, Tennessee, Texas, Virginia, Washington, Wisconsin, and Wyoming.

‡ Confidence interval.

§ Relative standard error of the estimate is ≥30%; estimate is unreliable.

TABLE 2. (Continued) Number and percentage of adults with and without a history of epilepsy,* by selected characteristics — 19 states,† Behavioral Risk Factor Surveillance System, 2005

Characteristic	Total sample size	With history of epilepsy (n = 2,207)			Without history of epilepsy (n = 118,638)		
		No.	%	(95% CI) [§]	No.	%	(95% CI)
Length of time since last checkup							
Within past year	84,938	1,569	69.0	(65.0–72.7)	83,369	67.9	(67.4–68.5)
Within past 2 years	15,095	253	11.9	(9.4–14.9)	14,842	14.1	(13.7–14.5)
Within past 5 years	8,813	174	9.7	(7.4–12.5)	8,639	8.6	(8.3–9.0)
≥5 years	8,946	155	8.2	(6.2–10.7)	8,791	7.9	(7.6–8.2)
Never	1,320	18	1.2 [¶]	(0.5–3.0) [¶]	1,302	1.5	(1.3–1.6)
Body mass index							
Underweight (<18.5 kg/m ²)	10,909	221	5.9	(4.6–7.7)	10,688	4.6	(4.5–4.8)
Normal weight (18.5–24.9 kg/m ²)	37,195	649	35.2	(36.0–39.7)	36,546	35.5	(35.0–36.1)
Overweight (25.0–29.9 kg/m ²)	38,642	636	28.8	(25.2–32.5)	38,006	35.9	(35.3–36.4)
Obese (≥30 kg/m ²)	28,069	613	30.1	(26.5–34.0)	27,456	24.0	(23.5–24.5)
Smoking status							
Current smoker	24,372	682	30.1	(26.5–33.9)	23,690	20.9	(20.4–21.4)
Former smoker	34,566	596	23.3	(20.3–26.6)	33,970	25.2	(24.7–25.6)
Never smoked	61,389	925	46.6	(42.4–50.8)	60,464	53.9	(53.4–54.5)
Exercise in last 30 days							
Yes	89,383	1,382	66.5	(62.8–70.0)	88,001	75.5	(75.0–76.0)
No	31,341	818	33.5	(30.0–37.2)	30,523	24.5	(24.0–25.0)
Alcohol consumption in past month							
Yes	60,455	809	41.2	(37.1–45.5)	59,646	54.2	(53.6–54.7)
No	60,180	1,396	58.8	(54.5–62.9)	58,784	45.8	(45.3–46.4)
Self-rated health.							
Good, very good, or excellent	97,852	1,257	63.0	(59.0–66.8)	96,595	84.2	(83.8–84.6)
Fair or poor	22,609	932	37.0	(33.2–41.0)	21,677	15.8	(15.4–16.2)
Receipt of emotional support							
Always or usually	93,308	1,440	65.6	(61.5–69.5)	91,868	78.9	(78.4–79.4)
Sometimes	15,897	405	20.7	(17.5–24.4)	15,492	13.1	(12.7–13.5)
Rarely or never	9,492	321	13.6	(11.0–16.8)	9,171	8.0	(7.7–8.3)
Life satisfaction							
Very satisfied or satisfied	112,554	1,793	83.4	(80.0–86.2)	110,761	94.6	(94.3–94.8)
Dissatisfied or very dissatisfied	7,408	381	16.6	(13.8–20.0)	7,027	5.4	(5.2–5.7)

* Self-reported epilepsy as determined by response to the question "Have you ever been told by a doctor that you have a seizure disorder or epilepsy?"

† Arizona, Delaware, Florida, Georgia, Kansas, Kentucky, Michigan, Missouri, New Hampshire, New York, Oregon, Pennsylvania, South Carolina, Tennessee, Texas, Virginia, Washington, Wisconsin, and Wyoming.

§ Confidence interval.

¶ Relative standard error of the estimate is ≥30%; estimate is unreliable.

TABLE 3. Percentage of adults taking medication to control seizure disorder or epilepsy, having seizures in past 3 months, visiting a neurologist in the past year, and having activity limitations among adults with a history of epilepsy* and active epilepsy — 13 states,† Behavioral Risk Factor Surveillance System, 2005

Characteristic	Total with history of epilepsy (n = 1,626)		Inactive epilepsy [¶] (n = 693)		Active epilepsy [¶]					
	%	(95% CI) [§]	%	(95% CI)	Total with active epilepsy (n = 919)	Any seizures in past 3 months (n = 377)	No seizures in past 3 months (n = 515)	%	(95% CI)	
Currently taking medication to control seizure disorder or epilepsy										
Yes	48.8	(44.1–53.6)	—	—	93.1	(90.3–95.1)	83.9	(77.6–88.7)	100.0	—
No	51.2	(46.4–55.9)	—	—	6.9	(4.9–9.7)	16.1	(11.3–22.4)	0	—
Number of seizures in last 3 months										
None	71.0	(66.5–75.2)	88.7	(83.3–92.5)	55.1	(48.6–61.5)	0	—	98.2	(95.1–99.4)
One	8.1	(5.8–11.1)	0	—	15.3	(11.1–20.7)	34.9	(26.0–45.0)	0	—
More than one	15.0	(11.9–18.9)	0	—	28.6	(23.0–34.9)	65.1	(55.0–74.0)	0	—
No longer have	5.9	(4.0–8.6)	11.3	(7.5–16.7)	1.0	(0.3–2.8)**	—	—	1.8	(0.6–4.9)**
Visited neurologist in past year										
Yes	40.5	(35.4–45.8)	14.9	(9.3–23.0)	62.0	(55.3–68.2)	65.1	(53.8–74.8)	59.4	(50.7–67.5)
No	59.5	(54.2–64.6)	85.1	(77.0–90.7)	38.0	(31.8–44.7)	34.9	(25.2–46.2)	40.6	(32.5–49.3)
Extent that epilepsy or its treatment limited activities in past month										
No limitations	74.7	(69.8–79.1)	95.0	(90.5–97.4)	57.9	(50.9–64.7)	34.9	(25.3–45.9)	76.5	(66.7–84.0)
Slightly or moderately	13.8	(10.9–17.5)	2.5	(1.0–5.7)	23.2	(18.1–29.2)	32.2	(23.9–41.8)	16.0	(9.8–24.9)
Quite a bit or extremely	11.4	(8.1–15.9)	2.5	(0.9–6.8)	18.9	(13.3–26.0)	32.9	(22.7–45.0)	7.6	(3.5–15.8)

* Self-reported epilepsy as determined by an affirmative response to the question "Have you ever been told by a doctor that you have a seizure disorder or epilepsy?"

† Arizona, Delaware, Georgia, Kentucky, Michigan, Missouri, New York, Oregon, Pennsylvania, South Carolina, Tennessee, Washington, and Wyoming.

§ Confidence interval.

¶ Respondents were classified as having active epilepsy if they responded "yes" to ever having been told by a doctor that they had a seizure disorder or epilepsy and also responded that they either were currently taking medication for epilepsy, had one or more seizures in the preceding 3 months, or both. Respondents were classified as having inactive epilepsy if they responded "yes" to ever having been told by a doctor that they had a seizure disorder or epilepsy but were not taking medication for epilepsy and had not had a seizure in the preceding 3 months.

** Respondents who reported taking medication for epilepsy (i.e., were classified as having active epilepsy).

TABLE 4. Estimated prevalence of active and inactive epilepsy* among adults, by sex, age, and race/ethnicity — 13 states,† Behavioral Risk Factor Surveillance System, 2005

Characteristic	Total sample size	Active epilepsy			Inactive epilepsy		
		No.	%	(95% CI)§	No.	%	(95% CI)
Total	87,891	919	0.84	(0.74–0.96)	693	0.75	(0.65–0.86)
Sex							
Male	32,954	333	0.77	(0.62–0.95)	231	0.69	(0.55–0.88)
Female	54,937	586	0.92	(0.79–1.07)	462	0.80	(0.67–0.95)
Age (yrs)							
18–24	4,457	18	0.35¶	(0.19–0.67)	40	0.79¶	(0.48–1.3)
25–34	11,041	103	0.92	(0.61–1.37)	94	0.81	(0.55–1.2)
35–44	15,143	165	0.95	(0.73–1.24)	158	0.97	(0.73–1.3)
45–54	18,147	260	1.18	(0.95–1.46)	180	0.82	(0.63–1.1)
55–64	16,436	177	0.79	(0.60–1.02)	132	0.63	(0.47–0.85)
65–74	12,501	121	0.87	(0.62–1.22)	58	0.54	(0.41–0.98)
≥75	9,691	68	0.53	(0.32–0.86)	30	0.23	(0.12–0.43)
Race/Ethnicity							
White	73,151	756	0.87	(0.75–0.99)	561	0.72	(0.62–0.84)
Black	7,220	74	0.89	(0.55–1.45)	63	0.71	(0.45–1.10)
Hispanic	3,502	30	0.66¶	(0.33–1.32)	25	0.90¶	(0.40–1.98)
Other	3,239	42	0.51¶	(0.26–0.98)	34	0.81¶	(0.42–1.53)

* Respondents were classified as having active epilepsy if they responded “yes” to ever having been told by a doctor that they had a seizure disorder or epilepsy and also responded that they either were currently taking medication for epilepsy, had one or more seizures in the preceding 3 months, or both. Respondents were classified as having inactive epilepsy if they responded “yes” to ever having been told by a doctor that they had a seizure disorder or epilepsy but were not taking medication for epilepsy and had not had a seizure in the preceding 3 months.

† Arizona, Delaware, Georgia, Kentucky, Michigan, Missouri, New York, Oregon, Pennsylvania, South Carolina, Tennessee, Washington, and Wyoming.

§ Confidence interval.

¶ Relative standard error of the estimate is ≥30%; estimate is unreliable.

TABLE 5. Number and percentage of adults with and without a history of epilepsy,* by selected characteristics and epilepsy status† — 13 states,‡ Behavioral Risk Factor Surveillance System, 2005

Characteristic	Without history of epilepsy (n = 86,258)			With history of epilepsy						
				Active epilepsy (n = 919)			Inactive epilepsy (n = 693)			
	No.	%	(95% CI¶)	No.	%	(95% CI)	No.	%	(95% CI)	
Sex										
Male	32,380	48.1	(47.4–48.8)	333	43.6	(37.1–50.2)	231	44.6	(37.5–52.0)	
Female	53,878	51.9	(51.2–52.6)	586	56.4	(49.8–62.9)	462	55.4	(48.0–62.5)	
Age (yrs)										
18–24	4,397	12.8	(12.1–13.5)	18	5.3**	(2.9–9.7)	40	13.4	(8.4–20.7)	
25–34	10,842	17.9	(17.3–18.4)	103	19.4	(13.6–26.8)	94	19.6	(13.7–27.1)	
35–44	14,819	19.6	(19.1–20.1)	165	22.1	(17.2–27.8)	158	25.7	(20.0–32.5)	
45–54	17,700	18.6	(18.1–19.1)	260	26.1	(21.3–31.5)	180	20.5	(15.9–25.9)	
55–64	16,123	14.0	(13.6–14.4)	177	13.0	(10.0–16.8)	132	11.9	(8.8–16.0)	
65–74	12,320	8.8	(8.6–9.1)	121	9.1	(6.5–12.6)	58	6.3	(4.1–9.8)	
≥75	9,590	8.3	(8.0–8.6)	68	5.1	(3.1–8.3)	30	2.5*	(1.3–4.8)	
Race/Ethnicity										
White	71,816	77.6	(76.9–78.2)	756	80.4	(73.8–85.7)	561	76.1	(68.0–82.6)	
Black	7,081	10.2	(9.8–10.7)	74	11.0	(6.9–16.9)	63	9.8	(6.3–14.8)	
Hispanic	3,447	7.0	(6.5–7.5)	30	5.5**	(2.8–10.6)	25	8.5*	(3.9–17.3)	
Other	3,163	5.2	(4.9–5.6)	42	3.2	(1.6–6.0)	34	5.7*	(3.0–10.4)	
Education										
Less than high school	8,923	10.4	(10.0–10.9)	139	15.9	(11.9–20.9)	107	16.7	(12.0–22.8)	
High school graduate	28,010	31.6	(31.0–32.3)	341	37.0	(31.1–43.2)	225	34.0	(27.6–41.1)	
Some college or college graduate	49,165	58.0	(57.3–58.7)	439	47.1	(40.7–53.6)	361	49.3	(42.1–56.4)	
Income										
<\$25,000	22,654	26.5	(25.8–27.2)	433	47.7	(40.7–54.9)	253	40.7	(33.4–48.4)	
\$25,000–\$49,999	23,544	29.8	(29.2–30.5)	183	26.3	(20.7–32.9)	187	26.4	(20.6–33.2)	
≥\$50,000	28,043	43.7	(43.0–44.4)	151	26.0	(19.7–33.4)	156	32.9	(25.6–41.1)	
Marital status										
Married or unmarried couple	50,029	62.5	(61.8–63.2)	424	53.9	(47.4–60.2)	347	58.0	(50.9–64.8)	
Formerly married	25,055	18.2	(17.8–18.7)	335	26.6	(21.7–32.3)	230	22.2	(17.7–27.5)	
Never married	10,913	19.2	(18.6–20.0)	154	19.5	(14.6–25.7)	113	19.8	(14.3–26.8)	
Employment status										
Employed	46,804	61.2	(60.5–61.9)	265	36.0	(30.0–42.6)	356	55.4	(48.2–62.3)	
Unemployed	3,569	5.4	(5.1–5.9)	62	9.8	(6.4–14.6)	35	8.3**	(4.8–14.1)	
Unable to work	5,213	4.9	(4.6–5.1)	316	31.3	(25.6–37.6)	131	15.4	(11.5–20.3)	
Other (homemaker, student, or retired)	30,442	28.5	(27.9–29.1)	272	22.9	(18.4–28.1)	169	20.9	(16.0–27.0)	

* Self-reported epilepsy as determined by response to the question "Have you ever been told by a doctor that you have a seizure disorder or epilepsy?"

† Respondents were classified as having active epilepsy if they responded "yes" to ever having been told by a doctor that they had a seizure disorder or epilepsy and also responded that they either were currently taking medication for epilepsy, had one or more seizures in the preceding 3 months, or both. Respondents were classified as having inactive epilepsy if they responded "yes" to ever having been told by a doctor that they had a seizure disorder or epilepsy but were not taking medication for epilepsy and had not had a seizure in the preceding 3 months.

‡ Arizona, Delaware, Georgia, Kentucky, Michigan, Missouri, New York, Oregon, Pennsylvania, South Carolina, Tennessee, Washington, and Wyoming.

¶ Confidence interval.

** Relative standard error of the estimate is ≥30%; estimate is unreliable.

TABLE 6. Number and percentage of adults with and without a history of epilepsy,* by risk factors, comorbid conditions, and epilepsy status† — 13 states,‡ Behavioral Risk Factor Surveillance System, 2005

Characteristic	Without history of epilepsy (n = 86,258)			With history of epilepsy					
	No.	%	(95% CI [¶])	Active epilepsy (n = 919)			Inactive epilepsy (n = 693)		
	No.	%	(95% CI [¶])	No.	%	(95% CI)	No.	%	(95% CI)
Self-rated health									
Good or excellent	69,824	84.2	(83.7–84.7)	444	51.5	(45.0–57.9)	460	71.5	(65.4–76.8)
Fair or poor	16,198	15.8	(15.3–16.3)	468	48.5	(42.1–55.0)	228	28.5	(23.2–34.6)
Health-care insurance									
Yes	75,936	85.9	(85.3–86.4)	808	89.1	(85.1–92.2)	572	76.1	(68.8–82.1)
No	10,121	14.1	(13.6–14.7)	111	10.9	(7.8–14.9)	121	23.9	(17.9–31.2)
Could not visit doctor because of cost									
Yes	10,613	12.8	(12.3–13.3)	201	20.4	(15.7–26.0)	162	24.7	(18.8–31.6)
No	75,469	87.2	(86.7–87.7)	716	79.6	(74.0–84.3)	528	75.3	(68.4–81.2)
Checkup									
Within past year	60,048	67.5	(66.8–68.2)	679	71.5	(65.1–77.1)	465	63.1	(55.5–70.1)
Within past 2 years	10,946	14.6	(14.0–15.1)	93	13.3	(8.9–19.3)	88	11.5	(7.7–16.9)
Within past 5 years	6,412	8.7	(8.3–9.1)	65	7.8	(5.3–11.3)	60	11.2	(7.0–17.5)
≥5 years	6,616	8.0	(7.6–8.3)	56	6.9	(4.3–10.7)	64	13.7	(8.8–20.7)
Never	966	1.2	(1.1–1.4)	—	—	—	—	—	—
Body mass index									
Underweight (<18.5 kg/m ²)	10,114	6.4	(6.2–6.6)	131	8.7	(6.7–11.2)	80	9.4	(6.0–14.3)
Normal weight (18.5–24.9 kg/m ²)	25,611	35.7	(35.0–36.4)	263	32.6	(26.7–39.0)	186	32.2	(25.7–39.6)
Overweight (25.0–29.9 kg/m ²)	26,773	34.6	(33.9–35.3)	233	26.6	(29.7–33.4)	210	26.5	(21.0–33.0)
Obese (≥30 kg/m ²)	19,616	23.3	(22.7–23.9)	246	32.2	(26.3–38.7)	201	31.9	(25.3–39.2)
Exercise in past 30 days									
Yes	63,905	75.4	(74.8–76.0)	539	60.7	(54.5–66.6)	468	71.7	(65.3–77.3)
No	22,275	24.6	(24.0–25.2)	376	39.3	(33.4–45.5)	224	28.3	(22.7–34.7)
Smoking status									
Current smoker	17,519	21.6	(21.0–22.2)	299	32.4	(26.4–39.0)	211	32.0	(25.7–39.1)
Former smoker	24,661	25.5	(24.9–26.1)	251	26.5	(21.4–32.3)	188	21.7	(16.9–27.6)
Never smoked	43,720	52.9	(52.2–53.6)	367	41.2	(35.0–47.6)	292	46.2	(39.1–53.5)
Alcohol consumption in past month									
Yes	42,466	53.4	(52.7–54.1)	278	30.4	(25.0–36.4)	289	45.2	(38.1–52.5)
No	43,641	46.6	(45.9–47.3)	640	69.6	(63.6–75.0)	404	54.8	(47.5–61.9)

* Self-reported epilepsy as determined by response to the question "Have you ever been told by a doctor that you have a seizure disorder or epilepsy?"

† Respondents were classified as having active epilepsy if they responded "yes" to ever having been told by a doctor that they had a seizure disorder or epilepsy and also responded that they either were currently taking medication for epilepsy, had one or more seizures in the preceding 3 months, or both. Respondents were classified as having inactive epilepsy if they responded "yes" to ever having been told by a doctor that they had a seizure disorder or epilepsy but were not taking medication for epilepsy and had not had a seizure in the preceding 3 months.

‡ Arizona, Delaware, Georgia, Kentucky, Michigan, Missouri, New York, Oregon, Pennsylvania, South Carolina, Tennessee, Washington, and Wyoming.

¶ Confidence interval.

** Relative standard error of the estimate is ≥30%; estimate is unreliable.

TABLE 6. (Continued) Number and percentage of adults with and without a history of epilepsy,* by risk factors, comorbid conditions, and epilepsy status† — 13 states,§ Behavioral Risk Factor Surveillance System, 2005

Characteristic	Without history of epilepsy (n = 86,258)			With history of epilepsy					
	No.	%	(95% CI¶)	Active epilepsy (n = 919)			Inactive epilepsy (n = 693)		
	No.	%	(95% CI¶)	No.	%	(95% CI)	No.	%	(95% CI)
Ever told had a stroke									
Yes	2,857	2.4	(2.3–2.6)	168	15.7	(11.3–21.4)	58	7.3	(4.3–12.0)
No	83,184	97.6	(97.4–97.7)	737	84.3	(78.6–88.7)	628	92.7	(88.0–95.7)
Ever told had heart disease									
Yes	4,901	4.6	(4.3–4.8)	110	8.4	(5.6–11.8)	50	4.8	(3.0–7.4)
No	80,635	95.4	(95.2–95.7)	793	91.6	(88.2–94.1)	635	95.2	(92.6–97.0)
Ever told had asthma									
Yes	7,470	8.2	(7.8–8.6)	181	20.3	(15.3–26.4)	108	11.9	(8.1–17.0)
No	78,324	91.8	(91.4–92.2)	727	79.7	(73.6–84.7)	576	88.1	(83.0–91.9)
Ever told had diabetes									
Yes	8,841	7.7	(7.4–8.0)	120	13.0	(8.3–19.7)	91	14.9	(10.4–20.8)
No	77,690	92.3	(92.0–92.6)	797	87.0	(80.3–91.7)	602	85.1	(79.2–89.6)
Ever told had arthritis									
Yes	31,132	28.0	(27.5–28.6)	476	43.0	(37.0–49.2)	303	41.8	(34.8–49.1)
No	54,736	72.0	(71.4–72.5)	440	57.0	(50.8–63.0)	389	58.2	(50.9–65.2)
Current joint pain									
Yes	40,394	40.8	(40.2–41.5)	573	57.7	(51.1–64.1)	394	54.1	(46.8–61.2)
No	45,673	59.2	(58.5–59.8)	343	42.3	(35.9–48.9)	299	45.9	(38.8–53.2)
5 servings/day of fruits and vegetables									
Yes	25,391	26.4	(25.8–27.0)	275	21.6	(17.4–26.3)	193	27.4	(21.2–34.6)
No	60,764	73.6	(73.0–74.2)	640	78.4	(73.7–82.6)	500	72.6	(65.4–78.8)
Flu shot in past year									
Yes	26,809	26.0	(25.4–26.6)	323	32.5	(26.7–38.9)	190	23.1	(17.9–29.3)
No	59,221	74.0	(73.4–74.6)	593	67.5	(61.1–73.3)	503	76.9	(70.7–82.1)
Human immunodeficiency virus risk situations									
Yes	1,862	3.8	(3.4–4.2)	24	4.6**	(2.4–8.7)	29	5.2**	(2.6–9.9)
No	62,267	96.2	(95.8–96.6)	703	95.4	(91.3–97.6)	576	94.8	(90.1–97.4)
Receipt of emotional support									
Always or usually	66,901	79.0	(78.4–79.6)	571	59.3	(52.5–65.8)	468	66.6	(59.3–73.2)
Sometimes	11,340	13.4	(12.9–13.9)	181	21.6	(16.3–27.9)	118	21.1	(15.8–27.6)
Rarely or never	6,564	7.6	(7.2–8.0)	149	19.1	(14.0–25.6)	94	12.3	(7.9–18.6)
Life satisfaction									
Very satisfied or satisfied	80,377	94.3	(93.9–94.6)	719	81.2	(76.3–85.3)	581	84.7	(78.1–89.6)
Dissatisfied or very dissatisfied	5,265	5.7	(5.4–6.1)	184	18.8	(14.7–23.7)	102	15.3	(10.4–21.9)

* Self-reported epilepsy as determined by response to the question "Have you ever been told by a doctor that you have a seizure disorder or epilepsy?"

† Respondents were classified as having active epilepsy if they responded "yes" to ever having been told by a doctor that they had a seizure disorder or epilepsy and also responded that they either were currently taking medication for epilepsy, had one or more seizures in the preceding 3 months, or both. Respondents were classified as having inactive epilepsy if they responded "yes" to ever having been told by a doctor that they had a seizure disorder or epilepsy but were not taking medication for epilepsy and had not had a seizure in the preceding 3 months.

§ Arizona, Delaware, Georgia, Kentucky, Michigan, Missouri, New York, Oregon, Pennsylvania, South Carolina, Tennessee, Washington, and Wyoming.

¶ Confidence interval.

** Relative standard error of the estimate is $\geq 30\%$; estimate is unreliable.

TABLE 7. Number and percentage of adults with active epilepsy* and any seizures within past 3 months, by selected characteristics — 13 states,† Behavioral Risk Factor Surveillance System, 2005

Characteristic	Total with active epilepsy	Any seizures in past 3 months		
		No.	%	(95% CI [§])
Total	892[¶]	377	43.9	(37.5–50.4)
Sex				
Male	324	126	37.6	(27.7–48.7)
Female	568	251	48.8	(40.9–56.6)
Race/Ethnicity				
White	737	294	40.0	(33.6–46.8)
Black	70	32	53.9	(30.4–75.7)
Hispanic	28	17	79.2	(50.3–93.5)
Other	41	24 ^{**}	23.2	(9.9–45.4)
Age (yrs)				
18–34	116	65	55.2	(37.7–71.5)
35–44	162	85	46.3	(33.4–59.7)
45–64	427	184	43.7	(35.5–52.3)
≥65	182	39 ^{**}	20.1	(10.0–36.4)
Income				
<\$25,000	420	226	57.3	(47.5–66.5)
\$24,999–\$49,999	183	65	44.0	(31.2–57.6)
≥\$50,000	148	28 ^{**}	20.9	(12.1–33.7)
Employment status				
Employed	260	81	33.2	(23.8–44.1)
Unemployed or unable to work	369	219	59.2	(49.0–68.7)
Other (homemaker, student, or retired)	260	74	33.5	(23.2–45.7)

* Respondents were classified as having active epilepsy if they responded “yes” to ever having been told by a doctor that they had a seizure disorder or epilepsy and also responded that they either were currently taking medication for epilepsy, had one or more seizures in the preceding 3 months, or both.

† Arizona, Delaware, Georgia, Kentucky, Michigan, Missouri, New York, Oregon, Pennsylvania, South Carolina, Tennessee, Washington, and Wyoming.

§ Confidence interval.

¶ Total number of persons with active epilepsy who provided a valid response to the question on seizure frequency.

** Relative standard error of the estimate is ≥30%; estimate is unreliable.

TABLE 8. Health-related quality of life indicators among adults with and without a history of epilepsy,* by epilepsy status and seizure activity† — multiple states, Behavioral Risk Factor Surveillance System, 2005

Epilepsy status	No.‡	Indicators							
		Mentally unhealthy days		Physically unhealthy days		Overall unhealthy days		Activity-limitation days	
		No.	(95% CI¶)	No.	(95% CI)	No.	(95% CI)	No.	(95% CI)
With history of epilepsy**	2,150	7.3	(6.5–8.1)	9.1	(8.2–10.1)	13.0	(11.9–14.0)	6.8	(6.0–7.7)
Without history of epilepsy**	117,279	3.2	(3.2–3.3)	3.5	(3.4–3.6)	5.9	(5.8–6.0)	2.1	(2.0–2.2)
Epilepsy classification and seizure activity††									
No history of epilepsy	85,223	3.4	(3.3–3.5)	3.6	(3.5–3.7)	6.1	(6.0–6.3)	2.2	(2.1–2.3)
Inactive epilepsy	680	6.1	(5.0–7.3)	6.9	(5.4–8.5)	11.0	(9.2–12.8)	5.2	(4.1–6.3)
Active epilepsy	895	9.3	(7.9–10.8)	10.7	(9.3–12.1)	15.1	(13.4–16.7)	8.4	(6.9–10.0)
No seizures in past 3 months	507	7.6	(5.8–9.4)	8.8	(7.2–10.4)	13.0	(11.0–14.9)	6.4	(4.6–8.1)
Any seizures in past 3 months	364	11.4	(9.1–13.7)	13.1	(10.7–15.5)	17.6	(14.9–20.2)	11.1	(8.4–13.8)

* Self-reported epilepsy as determined by response to the question "Have you ever been told by a doctor that you have a seizure disorder or epilepsy?"

† Respondents were classified as having active epilepsy if they responded "yes" to ever having been told by a doctor that they had a seizure disorder or epilepsy and also responded that they either were currently taking medication for epilepsy, had one or more seizures in the preceding 3 months, or both. Respondents were classified as having inactive epilepsy if they responded "yes" to ever having been told by a doctor that they had a seizure disorder or epilepsy but were not taking medication for epilepsy and had not had a seizure in the preceding 3 months.

‡ Sample size is based on largest number of respondents to health-related quality of life questions within epilepsy category.

¶ Confidence interval.

** 19 states: Arizona, Delaware, Florida, Georgia, Kansas, Kentucky, Michigan, Missouri, New Hampshire, New York, Oregon, Pennsylvania, South Carolina, Tennessee, Texas, Virginia, Washington, Wisconsin, and Wyoming.

†† 13 states: Arizona, Delaware, Georgia, Kentucky, Michigan, Missouri, New York, Oregon, Pennsylvania, South Carolina, Tennessee, Washington, and Wyoming.

The *Morbidity and Mortality Weekly Report (MMWR)* Series is prepared by the Centers for Disease Control and Prevention (CDC) and is available free of charge in electronic format. To receive an electronic copy each week, send an e-mail message to listserv@listserv.cdc.gov. The body content should read *SUBscribe mmwr-toc*. Electronic copy also is available from CDC's Internet server at <http://www.cdc.gov/mmwr> or from CDC's file transfer protocol server at <ftp://ftp.cdc.gov/pub/publications/mmwr>. Paper copy subscriptions are available through the Superintendent of Documents, U.S. Government Printing Office, Washington, DC 20402; telephone 202-512-1800.

Data in the weekly *MMWR* are provisional, based on weekly reports to CDC by state health departments. The reporting week concludes at close of business on Friday; compiled data on a national basis are officially released to the public on the following Friday. Data are compiled in the National Center for Public Health Informatics, Division of Integrated Surveillance Systems and Services. Address all inquiries about the *MMWR* Series, including material to be considered for publication, to Editor, *MMWR* Series, Mailstop E-90, CDC, 1600 Clifton Rd., N.E., Atlanta, GA 30333 or to mmwrq@cdc.gov.

All material in the *MMWR* Series is in the public domain and may be used and reprinted without permission; citation as to source, however, is appreciated.

Use of trade names and commercial sources is for identification only and does not imply endorsement by the U.S. Department of Health and Human Services.

References to non-CDC sites on the Internet are provided as a service to *MMWR* readers and do not constitute or imply endorsement of these organizations or their programs by CDC or the U.S. Department of Health and Human Services. CDC is not responsible for the content of these sites. URL addresses listed in *MMWR* were current as of the date of publication.