



MMWRTM

Morbidity and Mortality Weekly Report

www.cdc.gov/mmwr

Surveillance Summaries

November 27, 2009 / Vol. 58 / No. SS-8

Abortion Surveillance — United States, 2006

The *MMWR* series of publications is published by the Coordinating Center for Health Information and Service, Centers for Disease Control and Prevention (CDC), U.S. Department of Health and Human Services, Atlanta, GA 30333.

Suggested Citation: Centers for Disease Control and Prevention. [Title]. Surveillance Summaries, [Date]. MMWR 2009;58(No. SS-#).

Centers for Disease Control and Prevention

Thomas R. Frieden, MD, MPH
Director

Peter A. Briss, MD, MPH
Acting Associate Director for Science

James W. Stephens, PhD
Office of the Associate Director for Science

Stephen B. Thacker, MD, MSc
Acting Deputy Director

Office of Surveillance, Epidemiology, and Laboratory Services

Editorial and Production Staff

Frederic E. Shaw, MD, JD
Editor, MMWR Series

Christine G. Casey, MD
Deputy Editor, MMWR Series

Susan F. Davis, MD
Associate Editor, MMWR Series

Teresa F. Rutledge
Managing Editor, MMWR Series

David C. Johnson
Lead Technical Writer-Editor

Jeffrey D. Sokolow, MA
Project Editor

Martha F. Boyd
Lead Visual Information Specialist

Malbea A. LaPete

Stephen R. Spriggs

Terraye M. Starr

Visual Information Specialists

Kim L. Bright

Quang M. Doan, MBA

Phyllis H. King

Information Technology Specialists

Editorial Board

William L. Roper, MD, MPH, Chapel Hill, NC, Chairman

Virginia A. Caine, MD, Indianapolis, IN

Jonathan E. Fielding, MD, MPH, MBA, Los Angeles, CA

David W. Fleming, MD, Seattle, WA

William E. Halperin, MD, DrPH, MPH, Newark, NJ

King K. Holmes, MD, PhD, Seattle, WA

Deborah Holtzman, PhD, Atlanta, GA

John K. Iglehart, Bethesda, MD

Dennis G. Maki, MD, Madison, WI

Sue Mallonee, MPH, Oklahoma City, OK

Patricia Quinlisk, MD, MPH, Des Moines, IA

Patrick L. Remington, MD, MPH, Madison, WI

Barbara K. Rimer, DrPH, Chapel Hill, NC

John V. Rullan, MD, MPH, San Juan, PR

William Schaffner, MD, Nashville, TN

Anne Schuchat, MD, Atlanta, GA

Dixie E. Snider, MD, MPH, Atlanta, GA

John W. Ward, MD, Atlanta, GA

CONTENTS

Introduction 2
 Methods 2
 Results 4
 Discussion..... 7
 References 10

Abortion Surveillance – United States, 2006

Karen Pazol, PhD
Sonya B. Gamble, MS
Wilda Y. Parker
Douglas A. Cook, MBIS
Suzanne B. Zane, DVM
Saeed Hamdan, MD, PhD

*Division of Reproductive Health
National Center for Chronic Disease Prevention and Health Promotion, CDC*

Abstract

Problem/Condition: Since 1969, CDC has conducted abortion surveillance to document the number and characteristics of women obtaining legal induced abortions in the United States.

Reporting Period Covered: 2006.

Description of System: Each year, CDC requests abortion data from the central health agencies of 52 reporting areas (the 50 states, New York City, and the District of Columbia); these data are provided to CDC voluntarily. In 2006, data were received from 49 reporting areas. For the purpose of trend analysis, data were evaluated from the 46 areas that reported data every year during 1996–2006.

Results: For 2006, a total of 846,181 abortions were reported to CDC. Among the 46 areas that provided data consistently during 1996–2006, a total of 835,134 abortions (98.7% of the total) were reported; the abortion rate was 16.1 abortions per 1,000 women aged 15–44 years, and the abortion ratio was 236 abortions per 1,000 live births. During the previous decade (1997–2006), reported abortion numbers, rates, and ratios decreased 5.7%, 8.8%, and 14.8%, respectively; most of these declines occurred before 2001. During the previous year (2005–2006), the total number of abortions increased 3.1%, and the abortion rate increased 3.2%; the abortion ratio was stable.

In 2006, as during the previous decade (1997–2006), women aged 20–29 years accounted for the majority (56.8%) of abortions and had the highest abortion rates (29.9 abortions per 1,000 women aged 20–24 years and 22.2 abortions per 1,000 women aged 25–29 years); by contrast, abortion ratios were highest at the extremes of reproductive age. Adolescents aged 15–19 years accounted for 16.5% of all abortions in 2006 and had an abortion rate of 14.8 abortions per 1,000 adolescents aged 15–19 years; women aged ≥ 35 years accounted for a smaller percentage (12.1%) of abortions and had lower abortion rates (7.8 abortions per 1,000 women aged 35–39 years and 2.6 abortions per 1,000 women aged ≥ 40 years). During 1997–2006, the percentage of abortions and the abortion rate increased among women aged ≥ 35 years but declined among adolescents aged ≤ 19 years and among women aged 20–29 years.

The majority (62.0%) of abortions in 2006 were performed at ≤ 8 weeks' gestation; few abortions were performed at 16–20 weeks' gestation (3.7%) or at ≥ 21 weeks' gestation (1.3%). During 1997–2006, the percentage of abortions performed at ≤ 8 weeks' gestation increased 11.7%; this increase largely was accounted for by procedures performed at ≤ 6 weeks' gestation, which increased 66.3%. In 2006, the greatest percentage (87.6%) of abortions were performed by curettage (including vacuum aspiration, sharp curettage, and dilation and evacuation procedures), followed by medical (nonsurgical) abortion (10.6%).

Deaths of women associated with complications from abortions for 2006 are being investigated under CDC's Pregnancy Mortality Surveillance System. In 2005, the most recent year for which data were available, seven women were reported to have died as a result of complications from known legal induced abortions. No reported deaths were associated with known illegal induced abortions.

Interpretation: Among the 46 areas that reported data consistently during 1996–2006, decreases in the total reported number, rate, and ratio of abortions were attributable primarily to reductions before 2001. During 2005–2006, the total number and rate of abortions increased. In 2005, as in the previous years, reported deaths related to abortions occurred only rarely.

Corresponding address: CDC/National Center for Chronic Disease Prevention and Health Promotion/Division of Reproductive Health, 1600 Clifton Rd., NE, MS K-21, Atlanta, GA 30333. E-mail: cdcinfo@cdc.gov.

Public Health Action: Abortion surveillance in the United States continues to provide the data needed to examine trends in the number and characteristics of women obtaining abortions. Policymakers and program planners can use these data to guide and evaluate efforts to prevent unintended pregnancies.

Introduction

This report is based on abortion data for 2006 provided voluntarily by the central health agencies of 52 reporting areas (the 50 states, the District of Columbia, and New York City) to CDC's National Center for Chronic Disease Prevention and Health Promotion, Division of Reproductive Health. Since 1969, CDC has conducted abortion surveillance to document the number and characteristics of women obtaining legal induced abortions in the United States (1). Following nationwide legalization of abortion in 1973, the total reported number, rate (the number of abortions per 1,000 women aged 15–44 years), and ratio (the number of abortions per 1,000 live births) of abortions increased rapidly, reaching their highest levels in the 1980s. These three measures of abortion subsequently have declined at a slow but steady pace, but with considerable variation across demographic populations (2,3). Continued surveillance is needed to monitor potential changes in the overall incidence of abortion procedures and to guide and evaluate programs for preventing unintended pregnancy in the United States.

Methods

Description of the Surveillance System

CDC requests tabulated data annually from 52 reporting areas (the 50 states, the District of Columbia, and New York City) to document the number and characteristics of women obtaining abortions in the United States. CDC requests data exclusively from the central health agency of each reporting area; before 1998, when CDC was unable to obtain abortion numbers from a central agency, information was requested from the hospitals and other facilities performing abortions in that agency's reporting area.* For the purpose of surveillance, a legal induced abortion is defined as a procedure performed by a licensed physician or by an appropriately licensed advanced

practice clinician acting under the supervision of a licensed physician that is intended to terminate a suspected or known intrauterine pregnancy and produce a nonviable fetus at any gestational age (4).† Collection of abortion data is facilitated in most states by the legal requirement for hospitals, facilities, and physicians to report abortions to a central health agency. However, the reporting areas provide this information to CDC on a voluntary basis (5,6). Since 1996, a total of 46 reporting areas have provided a continuous annual record of abortion numbers.§ However, the number of reporting areas providing data on the characteristics of women obtaining abortions and the completeness of the information provided has varied from year to year. For abortions performed in 2006, CDC obtained information from 49 reporting areas (excludes California, Louisiana, and New Hampshire).

Variables Recorded

Each year, CDC's Division of Reproductive Health sends suggested templates to central health agencies for them to compile aggregate abortion numbers according to the age of the woman having an abortion, the estimated gestational age at the time of the procedure, race (white, black, or other), ethnicity (Hispanic or non-Hispanic), type of procedure performed (e.g., curettage or medical), marital status, number of previous live births, number of previous abortions, and state of residence. Cross-tabulation also is requested by gestational age at the time of the procedure (for age, race, ethnicity, and type of procedure), age (for race and ethnicity), and age and race or ethnicity (for marital status). These variables are based on the information included on the standard reporting form developed by CDC's National Center for Health Statistics (NCHS) for the reporting areas to use to collect information on individual women (7). However, because no federal mandate exists that requires reporting areas to provide abortion data to CDC, many areas do not use this suggested reporting form and might not have all the information CDC requests on the characteristics of women obtaining abortions.

*In a given year during 1970–1995, CDC obtained information from the central health agencies of eight to 48 reporting areas and from hospitals and other facilities performing abortions in four to 26 reporting areas. In 1996 and 1997, CDC obtained information from the central health agencies of 48 reporting areas and from hospitals and other facilities performing abortions in four reporting areas (California, Iowa, New Hampshire, and Oklahoma).

† Hereafter, all abortions are considered to be legally induced unless otherwise stated to be illegally induced.

§ Data were not reported for Alaska during 1998–2002, for California during 1996–2006, for Louisiana during 2005–2006, for New Hampshire during 1998–2006, for Oklahoma during 1998–1999, and for West Virginia during 2003–2004.

To comply with federal standards for the collection of data on race and ethnicity (8), CDC provides alternative data templates for cross-tabulation of aggregate numbers on race and ethnicity and for the addition of certain other racial categories (Asian, Native Hawaiian/Pacific Islander, and American Indian/Alaska Native). Only six reporting areas provided information cross-classified by race and ethnicity, accounting for a total of 8.7% of abortions reported in 2006; among these six areas, data were incomplete (27.1% of cases were returned with unknown values). Consequently, race and ethnicity are presented in this report as separate variables.

Measures of Abortion

Four measures of abortion are presented in this report: 1) the total number of abortions in a given population, 2) the percentage of abortions obtained within a given subpopulation, 3) the abortion rate (i.e., the number of abortions per 1,000 women aged 15–44 years within a given population), and 4) the abortion ratio (i.e., the number of abortions per 1,000 live births within a given population). The total number and percentage of abortions are useful measures for determining the total number of women affected. Abortion rates control for differences in subpopulation size and reflect how likely abortion is within certain populations. Abortion ratios reflect the relative number of pregnancies in a population that end in abortion compared with live births. For the calculation of abortion ratios, data from state health departments were used in surveillance summaries for 1973–1995 to document the number of live births recorded in each reporting area. Starting with the report for 1996, this information has been obtained from NCHS (9). For the calculation of abortion rates, the number of women residing in each reporting area was obtained from U.S. Census Bureau postcensal data (10). Overall abortion rates for women of all ages were calculated from the population of women aged 15–44 years. However, because 94.0% of abortions among adolescents aged <15 years occurred among adolescents aged 13–14 years (as measured in 1988, the last year that NCHS enumerated abortions for this age group) (11), the population of adolescents aged 13–14 years was used as the denominator for this youngest group. Similarly, for women aged ≥40 years, abortion rates were based on the number of women aged 40–44 years.

Data Analysis

This report provides state-specific and overall abortion statistics for 49 reporting areas (excludes California, Louisiana, and New Hampshire). For all 49 areas, state-specific data are reported for 2006. In addition, for the 46 areas that have provided data for every year since 1996, trends are presented

for the entire period during 1996–2006 or for the previous year (2005–2006) and the previous decade (1997–2006)

Although the total number of abortions performed in 2006 was available from 49 reporting areas, the completeness of reporting varied by characteristics and reporting areas. This report describes the characteristics of women from the reporting areas that submitted adequate data (i.e., data categorized in accordance with surveillance variables and with <15% unknown values for a given characteristic). Percentages reported in the text and figures are based on known values; unknown values have been retained in the tables for completeness of reporting. If fewer than five women in a given category obtained an abortion, this value was not displayed in the individual table cells or added to the column totals. However, these small numbers were included in the calculation of summary measures (percentage of total abortions, abortion rates, and abortion ratios).

Most of the data in this report are presented by the state or area in which abortions were performed. In addition, 47 reporting areas[‡] also provided the number of abortions by the state or reporting area in which women resided. However, four states (Delaware, Illinois, Maryland, and Wisconsin) reported characteristics for in-state residents but not for out-of-state residents. Four other states (Alaska, Arizona, Iowa, and Massachusetts) provided only the total number of abortions for out-of-state residents, without specifying individual states or areas of residence. As a result, abortion statistics presented in this report by area of residence must be viewed as minimum estimates and might be disproportionately low for areas in which many women travel to obtain abortions in states with incomplete residence reporting.

For the purpose of evaluating trends, linear regression analysis was used to assess the rate of change in overall abortion numbers, rates, and ratios in the United States during 1996–2006. Reporting areas were included in this analysis only if they provided complete data every year during 1996–2006. In addition, the percentage change in abortion statistics was determined for the previous year (2005–2006) and the previous decade (1997–2006). For variables that have been presented only as the percentage of total abortions (procedure type, gestational age, marital status, number of prior abortions, and number of previous births), reporting areas were included in the analysis if they provided complete data for 1997, 2005, and 2006. Summary measures for the subset of areas that reported for all 3 years are presented in the text and might differ from the numbers presented in the tables for all 49 areas that reported for 2006. For variables that have been presented

[‡] Excludes three states (California, Louisiana, and New Hampshire) that did not report data and two states (Florida and Kentucky) that provided totals without residence status.

with associated rates and ratios (abortions among all women and abortions by age, race, and ethnicity), data are displayed annually, and reporting areas were included in the analysis only if they provided data every year during 1997–2006; summary measures for these areas are presented in separate tables from the data for all 49 areas that reported for 2006.

Abortion Mortality

CDC has reported data on abortion-related deaths periodically since information on abortion mortality first was included in the 1972 abortion surveillance report (3,12). An abortion-related death is defined as a death resulting from a direct complication of an abortion (legal or illegal), an indirect complication caused by a chain of events initiated by an abortion, or aggravation of a preexisting condition by the physiologic or psychologic effects of abortion (13). An abortion is defined as “legal” if it was performed by a licensed physician or an appropriately licensed advanced practice clinician acting under the supervision of a licensed physician; an abortion is defined as “illegal” if it was performed by any other person. All deaths determined to be related causally to abortion have been classified as abortion-related regardless of the time between the abortion and death.

Since 1987, CDC has monitored abortion-related deaths through its Pregnancy Mortality Surveillance System (PMSS) (14). Additional sources of data for abortion-related deaths include state vital records, maternal mortality review committees, surveys, private citizens and groups, media reports, health-care providers, medical examiners' reports, public health agencies and computerized searches of full-text newspaper/print media databases. For each death that possibly is related to abortion, CDC requests clinical records and autopsy reports. Two clinically experienced medical epidemiologists review these reports to determine the cause of death and whether the death was abortion-related. Each abortion-related death then is categorized by abortion type as legal induced, illegal induced, spontaneous, or unknown type. This report provides data on abortion-related deaths that occurred during 1972–2005; data for 2005 have not been published previously and are the most recent data available. Possible abortion-related deaths that occurred during 2006–2008 are under investigation. Although national case-fatality rates (the number of abortion-related deaths per 100,000 reported legal induced abortions) have been published for 1972–1997, this measure could not be calculated for 1998–2005 with CDC data; a substantial number of abortions have been documented in states that did not report abortion data to CDC (2,15), and thus the total number of abortions was not available as the denominator.

Results

U.S. Totals

Among the 49 areas that provided data for 2006, a total of 846,181 abortions were reported. For the 46 areas that provided data every year during 1996–2006 (excludes Alaska, California, Louisiana, New Hampshire, Oklahoma, and West Virginia), 835,134 abortions (98.7% of the total) were reported; among these 46 consistently reporting areas, the abortion rate was 16.1 abortions per 1,000 women aged 15–44 years, and the abortion ratio was 236 abortions per 1,000 live births (Table 1). During the previous decade (1997–2006), the total number, rate, and ratio of reported abortions declined 5.7%, 8.8%, and 14.8%, respectively. By contrast, during the previous year (2005–2006), the total number of abortions increased 3.1%, and the abortion rate increased 3.2%; the abortion ratio remained stable.

Regression analysis also indicated a general decline during 1996–2006 in abortion numbers, rates, and ratios (Figure 1), but most of this change is attributable to reductions that occurred during 1996–2000. On average during 1996–2000, the number of abortions decreased 20,605 per year, the abortion rate decreased 0.5 abortions per 1,000 women per year, and the abortion ratio decreased 9.7 abortions per 1,000 live births per year. Reductions were much smaller on average during 2001–2006; the number of abortions declined 2,163 per year, the abortion rate declined 0.1 per year, and the abortion ratio declined 3.3 per year.

Occurrence and Residence

Total abortion numbers, rates, and ratios have been tabulated by individual reporting area of occurrence and the residence status of the women who obtained the procedures (Table 2). By area of occurrence, a considerable range existed in the total number of reported abortions (range: seven [Wyoming]–90,157 [New York City]), the rate of abortions (range: 4.2 [Idaho]–48.5 [New York City]),** and the abortion ratio (range: 52 [Idaho]–752 [New York City]).†† Similarly, a considerable range existed by residence status in the total number of reported abortions (range: 275 [Wyoming]–83,220 [New York City]), the rate of abortions (range: 2.7 [Wyoming]–44.7 [New York City]), and the abortion ratio (range: 36 [Wyoming]–694 [New York City]). Given the substantial variation across reporting areas that also occurred in the percentage of abortions obtained by out-of-state residents (range: none [Wyoming]–54.3%

** An abortion rate was not calculated for Wyoming; because only seven abortions were reported in the state, a calculation would have been unstable.

†† An abortion ratio was not calculated for Wyoming; because only seven abortions were reported in the state, a calculation would have been unstable.

[District of Columbia]), abortion rates and ratios calculated by residence status might provide a more accurate reflection of population trends. However, these measures must be viewed with caution because of the variation across reporting areas in methods used to record residence status.

Age

Among women from the 48 areas for which age was reported for 2006, women aged 20–29 years accounted for 417,402 (56.8%) of the 735,187 abortions (excludes 6,063 abortions for women of unknown age) reported by age (Figure 2; Table 3). Women in this age group also had the highest abortion rates (29.9 and 22.2 abortions per 1,000 women aged 20–24 and 25–29 years, respectively). Women at the youngest and oldest age extremes (<15 or ≥40 years) accounted for the smallest percentage of abortions (0.5% and 3.2%, respectively) and had the lowest abortion rates (1.2 and 2.6 abortions per 1,000 women aged <15 and ≥40 years, respectively). This pattern across age groups was stable during the previous decade (1997–2006) among the 44 reporting areas that provided data every year (Table 4). Nonetheless, during 1997–2006, the percentage of overall abortions accounted for by adolescents aged <15–19 years declined (from 20.0% to 17.0%) whereas the percentage among women aged ≥35 years increased (from 10.8% to 12.1%). In addition, although abortion rates declined steadily during 1997–2006 among all women aged ≤29 years, abortion rates were slightly higher in 2006 than in 2005 for adolescents aged ≥15 years and for women aged 20–29 years (Table 4).

In contrast to abortion rates, abortion ratios for 2006 were highest at the extremes of reproductive age (Figure 2; Table 3). During 1997–2006, abortion ratios declined for all women except adolescents aged <15 years; however, abortion ratios were slightly higher in 2006 than in 2005 for women aged 25–39 years (Table 4).

Adolescents

Among the 46 areas for which age was reported by individual year for 2006, adolescents aged ≤19 years accounted for 116,613 abortions (Table 5). The adolescent abortion rate was 11.0 per 1,000 adolescents, and the adolescent abortion ratio was 358 abortions per 1,000 live births. Adolescents aged 18–19 years accounted for 62.0% of adolescent abortions and had the highest adolescent abortion rates (22.1 and 26.8 abortions per 1,000 adolescents aged 18 and 19 years, respectively). Adolescents aged <15 years accounted for the smallest percentage of adolescent abortions (3.0%) and had the lowest adolescent abortion rate (1.2 abortions per 1,000 adolescents). Among the 41 areas that reported data continuously during

the previous decade (1997–2006), this pattern across age groups was similar for each year (Table 6). Although abortion rates among adolescents of all ages declined steadily during 1997–2006, this decline did not continue during 2005–2006 for adolescents aged ≥16 years (Table 6).

Abortion ratios among adolescents generally declined with age and were lowest (310 abortions per 1,000 births) among adolescents aged 19 years (Table 5). Among the 41 reporting areas that provided data for every year during 1997–2006, relative values across age groups again were stable; however, the difference between younger and older adolescents increased, with a comparatively large decline among adolescents aged 18–19 years (Table 6).

Gestational Age

Among women from the 43 areas for which gestational age at abortion was reported for 2006 (Table 7), the majority (62.0%) of abortions were obtained at ≤8 weeks' gestation; only 5.0% of abortions were obtained at ≥16 weeks' gestation (3.7% at 16–20 weeks and 1.3% at ≥21 weeks). Among the 38 reporting areas that provided data for 1997, 2005, and 2006,^{§§} the percentage of abortions obtained at ≤8 weeks' gestation increased 11.7% (from 55.5% in 1997 to 62.0% in 2006). The percentage of abortions obtained at ≥16 weeks was relatively stable (5.7%, 5.2%, and 5.0% of all abortions in 1997, 2005, and 2006, respectively).

Among women who obtained an abortion in 2006 in the 41 areas that provided the exact week of gestation, 29.6%, 18.2%, and 14.3% obtained their procedure at ≤6, 7, and 8 weeks, respectively (Table 8). Among the 36 areas that provided data in 1997, 2005, and 2006,^{¶¶} the percentage of abortions obtained at ≤6 weeks' gestation increased 66.3% (from 17.7% of all abortions in 1997 to 29.4% in 2006), resulting in a shift in the gestational age for abortions obtained at ≤8 weeks toward the lower end of the distribution (≤6 weeks gestation).

Method Type

Among the 45 areas for which procedure type was reported for 2006, curettage (including vacuum aspiration, sharp curettage, and dilation and evacuation procedures) accounted for 87.6% of abortions (Table 9); medical (nonsurgical) abortion accounted for 10.6%, and all other methods were uncommon. Among the 39 reporting areas that provided data in 1997,

^{§§} Excludes Alaska, California, the District of Columbia, Florida, Illinois, Iowa, Louisiana, Maryland, Massachusetts, Mississippi, Nebraska, Nevada, New Hampshire, and Oklahoma.

^{¶¶} Excludes Alaska, California, Connecticut, the District of Columbia, Florida, Illinois, Iowa, Louisiana, Maryland, Massachusetts, Mississippi, Nebraska, Nevada, New Hampshire, Oklahoma, and Wisconsin.

2005, and 2006,^{***} curettage declined 11.2% (from 98.2% of all procedures in 1997 to 87.2% in 2006). Most of this decline was accounted for by an increase in the number of medical abortions. Among the 39 areas that provided information on procedure type in 1997, 2005, and 2006, medical abortions accounted for 0.4% of all procedures in 1997, compared with 11.1% in 2006. All other methods accounted for a consistently small percentage of abortions (0.4%–1.7%).

Race

Among women from the 39 areas for which race was reported for 2006, white women (including both Hispanic and non-Hispanic white women) accounted for the largest percentage (55.8%) of abortions; black women accounted for 36.4% and women of other racial groups for 7.8% (Table 10). Black women had higher abortion rates and ratios than white women and women of other races (Table 10). Among the 29 reporting areas that provided data every year during 1997–2006, the percentage of abortions by race changed little; abortions by women in the “other” racial category increased, but the percentage remained low (5.8%–7.7%) (Table 11). Among women from all racial groups, abortion rates and ratios generally declined during 1997–2006, but the abortion rate was higher in 2006 than in 2005; for black women, the abortion ratio was lower in 2006 than in 2005, whereas for white women and women in the “other” racial category, this measure was relatively stable during 2005–2006 (Table 11).

Ethnicity

Among women from the 31 areas for which ethnicity was reported for 2006, Hispanic and non-Hispanic women accounted for 20.1% and 79.9%, respectively, of all abortions (Table 12). Abortion rates were higher among Hispanic women than among non-Hispanic women (21.1 compared with 14.1 abortions per 1,000 women aged 15–44 years, respectively), but abortion ratios among the two ethnic groups were similar (200 and 224 abortions per 1,000 live births, respectively). Among the 19 reporting areas that provided data every year during 1997–2006, the percentage of abortions accounted for by Hispanic women increased 23.6%, whereas the percentage among non-Hispanic women decreased 4.8% (Table 13). In both ethnic groups, abortion rates and ratios generally declined during 1997–2006, but during 2005–2006, abortion rates increased and abortion ratios remained essentially unchanged (Table 13).

^{***} Excludes Alabama, Alaska, Arizona, California, Florida, Georgia, Illinois, Iowa, Kentucky, Louisiana, New Hampshire, West Virginia, and Wisconsin.

Marital Status

Among the 43 areas for which marital status was reported for 2006, 83.5% of all women obtaining abortions were unmarried (Table 14). For the 37 reporting areas that provided data in 1997, 2005, and 2006,^{†††} unmarried women accounted for a slightly higher percentage of abortions in 2006 (83.7%) than in 1997 (81.0%); the percentage was essentially unchanged from 2005 (83.2%).

Previous Live Births and Abortions

Among the 41 areas for which the number of previous live births was reported for 2006, 41.3%, 26.4%, and 32.2% of all women had previously had zero, one, or two or more live births, respectively (Table 15). Among the 36 reporting areas that provided data in 1997, 2005, and 2006,^{§§§} the change in the distribution of women obtaining abortions by the number of previous live births was minimal (CDC, unpublished data, 2009).

Among the 41 areas for which the number of previous abortions was reported for 2006, the majority of women (55.2%) had not previously had an abortion; 25.5% and 19.2%, respectively, had previously had either one or two or more abortions (Table 16). Among the 34 reporting areas that provided data in 1997, 2005, and 2006,^{¶¶¶} the change in the distribution of women obtaining abortions by the number of previous abortions was minimal (CDC, unpublished data, 2009).

Age and Marital Status by Race and Ethnicity

In some reporting areas, women of each racial and ethnic category were classified further by age and marital status (Tables 17 and 18). By age, a consistent pattern existed across all racial and ethnic populations: the smallest percentage of abortions (0.4%–0.7%) occurred among adolescents aged <15 years and the largest (29.0%–33.8%) among women aged 20–24 years. By marital status, a consistent pattern also existed across all racial and ethnic populations, with a much higher percentage of abortions occurring among women who were unmarried

^{†††} Excludes Alaska, Arizona, Arkansas, California, Connecticut, the District of Columbia, Florida, Iowa, Louisiana, Nebraska, New Hampshire, New York (excluding New York City), Oklahoma, Virginia, and Washington.

^{§§§} Excludes Alaska, California, Connecticut, the District of Columbia, Florida, Illinois, Iowa, Kentucky, Louisiana, Maine, Massachusetts, New Hampshire, New Mexico, North Carolina, Oklahoma, and Wisconsin.

^{¶¶¶} Excludes Alaska, California, Connecticut, the District of Columbia, Florida, Illinois, Iowa, Kentucky, Louisiana, Maine, Massachusetts, New Hampshire, New Mexico, North Carolina, Ohio, Oklahoma, Wisconsin, and Wyoming.

(68.1%–89.4%) compared with those who were married (10.6%–31.9%).

Weeks of Gestation by Age, Race, Ethnicity, and Type of Procedure

In some reporting areas, women who obtained abortions at different gestational ages also were categorized further by age, race, and ethnicity (Tables 19 and 20). In every subgroup for these three variables, the highest percentage of abortions were obtained at ≤ 8 weeks' gestation. However, although 42.2% of adolescents aged < 15 years and 51.9% adolescents aged 15–19 years obtained an abortion by ≤ 8 weeks' gestation, 60.5%–69.3% of adult women aged ≥ 20 years obtained an abortion by this time (Figure 3; Table 19).

For women from the 39 areas for which procedure type was categorized further by week of gestation, at every stage of pregnancy, curettage (including vacuum aspiration, sharp curettage, and dilation and evacuation procedures) accounted for $> 80\%$ of abortions (Table 21). The smallest percentage of procedures performed by curettage was observed at ≤ 8 weeks' gestation (82.6%) because of the comparatively high percentage of medical abortions performed at this time (15.9%).

Abortion Mortality

From national PMSS data (14), CDC identified nine deaths for 2005 that were potentially related to abortion. These deaths were identified either by some indication of abortion on the death certificate, by a report from a health-care provider, or from information such as a news or public health report associated with the death. Investigation of these cases indicated that seven of the nine deaths were related to legal abortion and none to illegal abortion (Table 22). Six of the legal abortion-related deaths occurred after a surgical procedure, and one occurred after a medical (nonsurgical) procedure. Two deaths ultimately were determined to be unrelated to the pregnancy and the abortion procedure and hence were not abortion-related by PMSS criteria. Possible abortion-related deaths that occurred during 2006–2008 are under investigation.

Discussion

For 2006, a total of 846,181 abortions were reported in the United States. Among the 46 areas that provided data for every year during 1996–2006, a total of 835,134 abortions were reported. These same 46 areas reported an abortion rate of 16.1 abortions per 1,000 women aged 15–44 years, and an abortion ratio of 236 abortions per 1,000 live births. Compared with 2005, this represents a 3.1% increase in the total number of

abortions and a 3.2% increase in the abortion rate. Although this increase in the total number and rate of abortions was the largest observed during the previous decade (1997–2006), the number of live births in the United States and the fertility rate (live births per 1,000 women aged 15–44 years) also increased 3% in 2006, constituting the largest single-year increase in more than 15 years (9). For this reason, the increase in the total number and rate of abortions for 2006 might reflect a general increase in the number of pregnancies of all outcomes (fetal losses, induced abortions, and live births). The stable abortion ratio suggests that this might be the case, but accumulation of surveillance data in subsequent years will be needed to determine whether the 2006 increase in abortions continues without an accompanying increase in fertility.

The increase in the total number and rate of abortions also follows a slowing rate of decline in the incidence of abortion. For the 46 reporting areas that provided a continuous annual record, abortion numbers, rates, and ratios were 5.7%, 8.8%, and 14.8% lower, respectively, for 2006 compared with 1997. However, most of these declines occurred before 2001; by 2000, the rate of decline for all three measures of abortion already had plateaued, and reductions after this time were minimal. A shift over the previous decade in the incidence of abortion might reflect multiple factors, including a decline in the availability of abortion providers (15–18); the adoption of state regulations, including mandatory waiting periods and parental involvement laws (19,20); increasing acceptance of nonmarital childbearing (21,22); and the failure to sustain past reductions in unintended pregnancy associated with improvements in the use of contraception (23–29).

In addition to overall population changes, the findings in this report indicate important age differences in abortion trends. Because women aged 20–29 years had the majority of abortions ($> 55\%$) during 1997–2006, they accounted for most of the overall changes in abortion rates. Conversely, women aged ≥ 35 years accounted for only a small percentage of abortions, but their abortion rates increased slowly over this entire period. This slow but persistent increase suggests that unintended pregnancy might be observed increasingly among older women as they delay childbearing and continue to use reversible contraceptive methods to retain their fertility options (2,26). Finally, this report provides data on adolescent abortion trends that will be important for evaluating recent changes in adolescent pregnancy and births. Although adolescent pregnancy and birth rates declined by approximately one third during 1991–2005 (30,31), adolescent birth rates increased 5.0% during 2005–2007, with most of this change occurring during 2005–2006 (9,32). A notable finding of this report is that adolescent abortion rates also increased during 2005–2006 after several years of decline. These concurrent trends suggest

that the recent increase in adolescent births can be attributed to an increase in adolescent pregnancies rather than a simple shift in the percentage of pregnancies resulting in live births. However, the findings in this report also suggest that some of the increase in adolescent births might be attributable to an increasing tendency for adolescents to continue their pregnancies. The increase in adolescent birth rates exceeded the increase in adolescent abortion rates for 2006.**** In addition, in contrast to adolescent abortion rates, adolescent abortion ratios continued to decline during 2005–2006. Ongoing surveillance is needed to evaluate these trends fully.

The findings in this report on race and ethnicity reflect disparities in abortion that have been well-documented and observed for many years (2,3,31,33,34). Comparatively high abortion rates and ratios among black women have been attributed to high unintended pregnancy rates and a high percentage of unintended pregnancies ending in abortion (23). This report indicates that abortion rates and ratios declined during 1997–2006 among women of all racial groups. However, although the decline in abortion ratios among black women continued during 2005–2006, this decline was not observed among women of other races. Data from subsequent years will be needed to assess whether this is a sustained trend.

The findings provided in this report also suggest that the percentage of abortions accounted for by Hispanic women increased during 1997–2006. However, this likely reflects the fact that Hispanic women account for a growing proportion of the United States population (35). Differences in abortion rates and ratios between Hispanic and non-Hispanic women presented in this report are difficult to interpret because the non-Hispanic category includes women from white, black, and other racial populations. Additional efforts to obtain more complete data on race and ethnicity will be attempted for future surveillance reports.

The findings presented in this report indicate that more women are obtaining abortions earlier in gestation, when the risks for complications are lowest (36). Among the areas that reported data consistently during 1997–2006, abortions obtained at ≤ 8 weeks' gestation increased 11.7%, accounting for 62.0% of all procedures in 2006 compared with 55.5% in 1997. A small but stable percentage of abortions (5.0%–5.7%) were performed at ≥ 16 weeks' gestation. Even among early-term abortions (≤ 8 weeks' gestation), a progressive shift to earlier stages of pregnancy occurred: although the percentage

of abortions obtained at ≤ 6 weeks' gestation increased 66.3%, the number performed during the eighth week declined 26.8%. Nonetheless, although a general trend existed for women to obtain abortions at earlier stages of gestation, adolescents were less likely than adult women to obtain an abortion by ≤ 8 weeks' gestation. Adolescents might seek abortion later in pregnancy because they often take longer to suspect and confirm they are pregnant (37). Additionally, in states with parental involvement laws, adolescents might need more time to receive court approval for obtaining an abortion without parental involvement or to make arrangements to travel to another state. Adolescents approaching age 18 years also have been reported to wait until they are old enough to obtain an abortion without parental involvement (38,39).

The shift in abortion to earlier stages of gestation, although not observed equally in all age groups, reflects changes in the types of procedures being used. Curettage has remained the most common method for performing abortions. Although for many years this procedure has been performed after the initial weeks of gestation, the development of highly sensitive pregnancy tests and transvaginal ultrasonography increasingly has allowed clinicians to diagnose pregnancy and confirm its effective termination at ≤ 6 weeks' gestation (40–43). In addition, the increasing use of medical abortion has contributed to the rising percentage of abortions performed early in gestation. During 1997–2006, the use of medical abortion among the subset of areas that reported data every year increased from 0.4% of all abortions in 1997 to 11.1% in 2006; among all of the areas that reported procedure type by gestational age for 2006, medical abortion accounted for 15.9% of all cases performed at ≤ 8 weeks' gestation.

The annual number of deaths associated with known legal abortions was more than two thirds lower on average in the early 2000s than it was in the early 1970s. In 2005, seven women died from causes known to be associated with legal abortions, and none died as a result of known illegal abortions. CDC data cannot be used to calculate national case-fatality rates for 1998–2005 because certain states (four during 1998–1999 and three during 2000–2005), including California, did not report data. Because a substantial number of abortions have been documented in California (2,15), CDC data cannot be used to approximate the total number of abortions as the denominator.

Of the seven deaths associated with legal abortions that were identified in 2005, one occurred after a medical (non-surgical) abortion procedure. This case has been described previously (44).

**** For 2006, birthrates increased 3.5% for adolescents aged 15–19 years, 2.8% for adolescents aged 15–17 years, and 4.4% for adolescents aged 18–19 years (9). By comparison, the respective changes in abortion rates were 2.1% for adolescents aged 15–19 years, -1.2%–1.3% for adolescents aged 15–17 years, and 2.2%–2.9% for adolescents aged 18–19 years (Tables 4 and 6).

Limitations

The findings in this report are subject to at least four limitations. First, because reporting requirements are established by the reporting areas, variation exists in the collection of data. Not all reporting areas use CDC's standard reporting form (7), and many reporting areas do not collect all the information CDC requests on the characteristics of women obtaining abortions (e.g., age, race, and ethnicity); similarly, many reporting areas do not specifically include medical abortion as one of the potential methods for terminating a pregnancy (5,6). Although missing demographic information might reduce the extent to which the statistics in this report represent all women in the United States, three nationally representative surveys of women obtaining abortions in 1987, 1994–1995 and 2001–2002 have produced distributions of characteristics similar to the distributions reported by CDC for the relevant years (2,33,34,45). Conversely, because the number of reporting areas specifically requesting information on medical abortion increased considerably during 1997–2006 (5,6), the numbers presented in this report might not accurately represent trends in the use of this method for performing abortions.

Second, as a result of the variation in reporting requirements, the number of abortions reported annually by CDC is lower than the actual total number of abortions performed in the United States. Although most states have laws mandating the collection of abortion data, in some reporting areas, information is provided to the central health agency on a voluntary basis (5,6). Consequently, the number of abortions reported by CDC consistently has been $\geq 11.0\%$ lower than the numbers obtained by the Guttmacher Institute through active survey techniques (2,46). In addition, although some areas undoubtedly are unable to count all abortions that occur in their jurisdictions, others provide no numbers at all. Because of these nonreporting areas, since 1998, the number of abortions reported to CDC has been only 65%–69% of the number counted by the Guttmacher Institute (2).

Third, abortion data are compiled and reported to CDC by the central health agency of the reporting area in which the abortion was performed rather than the area in which the woman resided. This inflates abortion statistics for areas in which a high percentage of abortions are obtained by out-of-state residents and undercounts procedures for states with limited abortion services, more stringent legal requirements for obtaining an abortion, or convenient geographic proximity to another state.

Finally, because reporting areas provide CDC with aggregate numbers rather than individual-level records, joint analysis of many points of interest (e.g., age, race, and ethnicity) is

precluded; moreover, adjustments for socioeconomic status cannot be made without data on education or income.

Public Health Actions

Ongoing national surveillance of abortion is useful for multiple reasons. Ongoing abortion surveillance is needed to guide and evaluate programs aimed at preventing unintended pregnancies. Although pregnancy intentions are complex and difficult to assess (47–52), the number of abortions provides a concrete measure of the number of unwanted pregnancies. In addition, routine national surveillance of abortion is needed to assess changes in clinical practice patterns (e.g., types of procedures being used and the gestational age at which procedures are performed). Finally, statistics on the number of pregnancies ending in abortion can be used in conjunction with data on births and fetal deaths to estimate pregnancy numbers accurately and determine rates for a variety of outcomes (e.g., adolescent pregnancy rates) (31).

Since 1973, the National Survey of Family Growth (NSFG) has been a principle source of information on factors affecting patterns of sexuality, contraceptive use, and pregnancy intentions in the United States (53). According to the 2002 NSFG, the most recent source of national data on pregnancy intentions, 48% of all pregnancies in the United States are unintended (23). Moreover, calculations based on NSFG data suggest unintended pregnancy underlies nearly all abortions,^{††††} and one fifth of all pregnancies in the United States end in abortion (31). Providing women with the knowledge and resources necessary to make decisions about their sexual behavior and use of contraception can help women avoid unintended pregnancies and thus reduce the number of abortions performed in the United States. However, efforts to reduce unintended pregnancy have been challenging. NSFG data suggest that unintended pregnancy rates declined during 1982–1995 in conjunction with an increase in the proportion of women at risk for unintended pregnancy^{§§§§} who were practicing contraception (24,26,27). However, findings from the 2002 NSFG suggested that declines in unintended pregnancy reached a plateau (23). This might be attributable to multiple factors, including

- a 40% increase during 1995–2002 in contraceptive nonuse among women at risk for unintended pregnancy (26),
- only modest improvements in the effective use of the most widely adopted forms of reversible contraception

^{††††} Intended pregnancies are estimated to account for only 4% of all abortions (23) and presumably include those performed for maternal medical indications and fetal abnormalities.

^{§§§§} Women are considered at risk for unintended pregnancy if they are fertile, have had intercourse in the past 3 months, and are not intentionally pregnant or seeking pregnancy (26).

(e.g., injectibles, oral contraceptives, and male condoms, which had a 7%, 9%, and 17% probability of pregnancy, respectively, within the first 12 months of typical use) (25), and

- minimal use of the most effective forms of reversible contraception (e.g., contraceptive implants and intrauterine devices, which were used by <1.5% and <2.5% of all women practicing contraception, respectively) (26).

Because the total number of unintended pregnancies and abortions is similar for the comparatively small group of women who do not use contraception and the much larger group of women who use contraception incorrectly or inconsistently (23,54,55), broader and more effective use of contraception will be needed. Findings from the 2006–2008 NSFG, scheduled for release in late 2009 (56), can help to target efforts for improving contraceptive use, thereby reducing the number of unintended pregnancies and thus the number of legal induced abortions in the United States.

Acknowledgment

Kristi Seed, Division of Reproductive Health, National Center for Chronic Disease Prevention and Health Promotion, CDC, assisted with the tables.

References

- Smith JC. Abortion surveillance report, hospital abortions, annual summary 1969. Atlanta, GA: US Department of Health, Education, and Welfare, Public Health Service, Health Services and Mental Health Administration, National Communicable Disease Center; 1970.
- Henshaw SK, Kost K. Trends in the characteristics of women obtaining abortions, 1974 to 2004. New York, NY: Guttmacher Institute; 2008. Available at <http://www.guttmacher.org/pubs/2008/09/23/TrendsWomenAbortions-wTables.pdf>. Accessed November 10, 2009.
- Gamble SB, Strauss LT, Parker WY, Cook DA, Zane SB, Hamdan S. Abortion surveillance—United States, 2005. In: Surveillance Summaries, November 28, 2008. MMWR 2008;57(No. SS-13).
- CDC. Abortion surveillance, 1981. Atlanta, GA: US Department of Health and Human Services, CDC, Public Health Service; 1985.
- Guttmacher Institute. State policies in brief: abortion reporting requirements. New York, NY: Guttmacher Institute; 2009. Available at http://www.guttmacher.com/statecenter/spibs/spib_ARR.pdf. Accessed November 10, 2009.
- Saul R. Abortion reporting in the United States: an examination of the federal-state partnership. *Fam Plann Perspect* 1998;30:244–7.
- CDC. Handbook on the reporting of induced termination of pregnancy. Hyattsville, MD: US Department of Health and Human Services, CDC, National Center for Health Statistics; 1998. (USDHHS pub. no. PHS 98-1117).
- Office of Management and Budget. Provisional guidance on the implementation of the 1997 standards for federal data on race and ethnicity. Washington, DC: Office of Management and Budget; 2000. Available at <http://www.ofm.wa.gov/pop/race/omb.pdf>. Accessed November 10, 2009.
- Martin JA, Hamilton BE, Sutton PD, et al. Births: final data for 2006. *Natl Vital Stat Rep* 2009;57(7):1–104.
- US Census Bureau. Downloadable data files, state by age, sex, race, and Hispanic origin, 6 race groups. Washington, DC: US Census Bureau; 2006. Available at http://www.census.gov/popest/archives/2000s/vintage_2006. Accessed November 10, 2009.
- Kochanek KD. Induced terminations of pregnancy: reporting states, 1988. *Monthly Vital Stat Rep* 1991;39(12 suppl):1–32.
- CDC. Abortion surveillance, 1972. Atlanta, GA: US Department of Health, Education, and Welfare, Public Health Service; 1974.
- CDC. Abortion surveillance, 1977. Atlanta, GA: US Department of Health, Education, and Welfare, Public Health Service; 1979.
- Chang J, Elam-Evans LD, Berg CJ, et al. Pregnancy-related mortality surveillance—United States, 1991–1999. In: Surveillance Summaries, February 21, 2003. MMWR 2003;52(No. SS-12).
- Jones RK, Zolna MR, Henshaw SK, Finer LB. Abortion in the United States: incidence and access to services, 2005. *Perspect Sex Reprod Health* 2008;40:6–16.
- Henshaw SK. Factors hindering access to abortion services. *Fam Plann Perspect* 1995;27:54–9, 87.
- Matthews S, Ribar D, Wilhelm M. The effects of economic conditions and access to reproductive health services on state abortion rates and birthrates. *Fam Plann Perspect* 1997;29:52–60.
- Henshaw SK, Finer LB. The accessibility of abortion services in the United States, 2001. *Perspect Sex Reprod Health* 2003;35:16–24.
- Dennis A, Henshaw SK, Joyce TJ, Finer LB, Blanchard K. The impact of laws requiring parental involvement for abortion: a literature review. New York, NY: Guttmacher Institute; 2009. Available at <http://www.guttmacher.org/pubs/ParentalInvolvementLaws.pdf>. Accessed November 10, 2009.
- Joyce TJ, Henshaw SK, Dennis A, Finer LB, Blanchard K. The impact of state mandatory counseling and waiting period laws on abortion: a literature review. New York, NY: Guttmacher Institute; 2009. Available at <http://www.guttmacher.org/pubs/MandatoryCounseling.pdf>. Accessed November 10, 2009.
- Martinez GM, Chandra A, Abma JC, Jones J, Mosher WD. Fertility, contraception, and fatherhood: data on men and women from Cycle 6 (2002) of the National Survey of Family Growth. *Vital Health Stat* 2006;23(26):1–142.
- Ventura SJ. Changing patterns of nonmarital childbearing in the United States. Hyattsville, MD: US Department of Health and Human Services, CDC, National Center for Health Statistics; 2009. (NCHS data brief, no. 18).
- Finer LB, Henshaw SK. Disparities in rates of unintended pregnancy in the United States, 1994 and 2001. *Perspect Sex Reprod Health* 2006;38:90–6.
- Henshaw SK. Unintended pregnancy in the United States. *Fam Plann Perspect* 1998;30:24–9, 46.
- Kost K, Singh S, Vaughan B, Trussell J, Bankole A. Estimates of contraceptive failure from the 2002 National Survey of Family Growth. *Contraception* 2008;77:10–21.
- Mosher WD, Martinez GM, Chandra A, Abma JC, Willson SJ. Use of contraception and use of family planning services in the United States: 1982–2002. *Advance Data from Vital Health Stat* 2004; no. 350:1–46.
- Piccinino LJ, Mosher WD. Trends in contraceptive use in the United States: 1982–1995. *Fam Plann Perspect* 1998;30:4–10, 46.
- Santelli JS, Orr M, Lindberg LD, Diaz DC. Changing behavioral risk for pregnancy among high school students in the United States, 1991–2007. *J Adolesc Health* 2009;44:25–32.
- Santelli JS, Lindberg LD, Finer LB, Singh S. Explaining recent declines in adolescent pregnancy in the United States: the contribution of abstinence and improved contraceptive use. *Am J Public Health* 2007;97:150–6.
- Martin JA, Hamilton BE, Sutton PD, et al. Births, final data for 2005. *Natl Vital Stat Rep*;56(6):1–104.
- Ventura SJ, Abma JC, Mosher WD, Henshaw SK. Estimated pregnancy rates by outcome for the United States, 1990–2004. *Natl Vital Stat Rep* 2008;56(15):1–23.
- Hamilton BE, Martin JA, Ventura SJ. Births: preliminary data for 2007. *Natl Vital Stat Rep* 2009;57(12):1–22.

33. Henshaw SK, Kost K. Abortion patients in 1994–1995: characteristics and contraceptive use. *Fam Plann Perspect* 1996;28:140–7, 58.
34. Jones RK, Darroch JE, Henshaw SK. Patterns in the socioeconomic characteristics of women obtaining abortions in 2000–2001. *Perspect Sex Reprod Health* 2002;34:226–35.
35. US Census Bureau. National characteristics, vintage 2008, population by sex, race, and Hispanic origin. Washington, DC: US Census Bureau; 2008. Available at <http://www.census.gov/popest/national/asrh/NC-EST2008-srh.html>. Accessed November 10, 2009.
36. Bartlett LA, Berg CJ, Shulman HB, et al. Risk factors for legal induced abortion-related mortality in the United States. *Obstet Gynecol* 2004;103:729–37.
37. Finer LB, Frohworth LF, Dauphinee LA, Singh S, Moore AM. Timing of steps and reasons for delays in obtaining abortions in the United States. *Contraception* 2006;74:334–44.
38. Colman S, Joyce T. Minors' behavioral responses to parental involvement laws: delaying abortion until age 18. *Perspect Sex Reprod Health* 2009;41:119–26.
39. Joyce T, Kaestner R, Colman S. Changes in abortions and births and the Texas parental notification law. *N Engl J Med* 2006;354:1031–8.
40. Creinin MD, Edwards J. Early abortion: surgical and medical options. *Curr Probl Obstet Gynecol Fertil* 1997;20:1–32.
41. Edwards J, Carson SA. New technologies permit safe abortion at less than six weeks' gestation and provide timely detection of ectopic gestation. *Am J Obstet Gynecol* 1997;176:1101–6.
42. Grimes DA. Management of abortion. In: Rock JA, Thompson JD, eds. *Te Linde's operative gynecology*. Philadelphia: Lippincott-Raven Publishers; 1997:477–99.
43. Fjerstad M, Stewart F. Pregnancy testing and management of early pregnancy. In: Hatcher RA, Trussell J, Nelson AL, Cates W Jr, Stewart F, Kowal D, eds. *Contraceptive technology*. 19th revised ed. New York, NY: Ardent Media, Inc.; 2008:591–635.
44. Fischer M, Bhatnagar J, Guarner J, et al. Fatal toxic shock syndrome associated with *Clostridium sordellii* after medical abortion. *N Engl J Med* 2005;353:2352–60.
45. Henshaw SK, Silverman J. The characteristics and prior contraceptive use of U.S. abortion patients. *Fam Plann Perspect* 1988;20:158–68.
46. Koonin LM, Smith JC. Legal induced abortion. In: Wilcox LS, Marks JS, eds. *From data to action: CDC's public health surveillance for women, infants, and children*. Washington, DC: US Department of Health and Human Services; 1994:83–92.
47. Santelli J, Rochat R, Hatfield-Timajchy K, et al. The measurement and meaning of unintended pregnancy. *Perspect Sex Reprod Health* 2003;35:94–101.
48. Lifflander A, Gaydos LM, Hogue CJ. Circumstances of pregnancy: low income women in Georgia describe the difference between planned and unplanned pregnancies. *Matern Child Health J* 2007;11:81–9.
49. Sable MR, Spencer JC, Stockbauer JW, Schramm WF, Howell V, Herman AA. Pregnancy wantedness and adverse pregnancy outcomes: differences by race and Medicaid status. *Fam Plann Perspect* 1997;29:76–81.
50. Sable MR, Wilkinson DS. Pregnancy intentions, pregnancy attitudes, and the use of prenatal care in Missouri. *Matern Child Health J* 1998;2:155–65.
51. Klerman LV. The intendedness of pregnancy: a concept in transition. *Matern Child Health J* 2000;4:155–62.
52. Dott M, Rasmussen SA, Hogue CJ, Reefhuis J. Association between pregnancy intention and reproductive-health related behaviors before and after pregnancy recognition, National Birth Defects Prevention Study, 1997–2002. *Matern Child Health J* 2009; epub. Available at <http://www.springerlink.com/content/h116tv7022v23621>. Accessed November 10, 2009.
53. Groves R, Benson G, Mosher WD, et al. Plan and operation of Cycle 6 of the National Survey of Family Growth. *Vital Health Stat* 2005;1(42):1–67.
54. Jones RK, Darroch JE, Henshaw SK. Contraceptive use among U.S. women having abortions in 2000–2001. *Perspect Sex Reprod Health* 2002;34:294–303.
55. Benson Gold R, Sonfield A, Richards CL, Frost JJ. Next steps for America's family planning program: leveraging the potential of Medicaid and Title X in an evolving health care system. New York, NY: Guttmacher Institute; 2009. Available at <http://www.guttmacher.org/pubs/NextSteps.pdf>. Accessed November 10, 2009.
56. CDC. About the National Survey of Family Growth. Cycle 7: a continuous survey. Bethesda, MD: US Department of Health and Human Services, CDC, National Center for Health Statistics; 2009. Available at http://www.cdc.gov/nchs/nsfg/about_nsfg.htm#cycle7. Accessed November 10, 2009.

TABLE 1. Number, percentage,* rate,† and ratio§ of reported abortions — selected states, United States, 1997–2006

Year	All areas with reported numbers		Continuously reporting areas¶		
	No.	No.	(%)	Rate	Ratio
1997	910,300**	885,624	(97.3)	17.7	277
1998	884,273	870,184	(98.4)	17.3	267
1999	861,789	847,283	(98.3)	16.9	258
2000	857,475	836,360	(97.5)	16.2	249
2001	853,485	833,183	(97.6)	16.1	250
2002	854,122	835,122	(97.8)	16.2	251
2003	848,163	829,071	(97.7)	16.0	245
2004	839,226	819,353	(97.6)	15.8	241
2005	820,151	809,881	(98.7)	15.6	236
2006	846,181	835,134	(98.7)	16.1	236

* Abortions from areas that reported every year during 1997–2006 as a percentage of all abortions reported..

† Number of abortions per 1,000 women aged 15–44 years.

§ Number of abortions per 1,000 live births.

¶ Areas for which abortion data were reported every year during 1997–2006; excludes six states for which no data were available for ≥1 year: Alaska (during 1998–2002), California (during 1997–2006), Louisiana (during 2005–2006), New Hampshire (during 1998–2006), Oklahoma (during 1998–1999), and West Virginia (during 2003–2004).

** This number is lower than that reported previously for 1997 because estimated values for California have been subtracted.

TABLE 2. Number, rate,* and ratio† of reported abortions, by residence and occurrence, and percentage of abortions obtained by out-of-state residents,§ by state of occurrence — selected states, United States, 2006¶

State/Area	Residence			Occurrence			% obtained by out-of-state residents
	No.	Rate	Ratio	No.	Rate	Ratio	
Alabama	10,274	10.5	162	11,654	12.4	184	18.7
Alaska**	2,138	14.9	194	1,923	13.4	175	0.6
Arizona**	10,822	8.7	106	10,836	8.7	106	3.4
Arkansas	5,139	9.1	125	4,988	8.8	122	14.0
Colorado	11,101	11.0	157	11,048	11.0	156	0.4
Connecticut	14,351	20.4	343	14,112	20.0	337	3.0
Delaware	3,701	20.9	309	4,804	27.1	401	28.2
District of Columbia	2,150	14.7	252	2,692	18.4	316	54.3
Florida††	—	—	—	95,586	27.3	404	—
Georgia	27,766	13.6	187	30,550	15.0	206	10.7
Hawaii	3,984	15.7	210	3,990	15.7	210	0.3
Idaho	1,954	6.6	81	1,249	4.2	52	2.7
Illinois	41,249	15.4	228	46,467	17.3	257	8.7
Indiana	11,383	8.8	128	10,614	8.2	120	4.0
Iowa**	5,957	10.2	147	6,722	11.5	166	16.7
Kansas	5,895	10.6	144	11,173	20.1	273	48.2
Kentucky††	—	—	—	3,912	4.5	67	—
Maine	2,611	10.2	185	2,670	10.4	189	3.2
Maryland	10,152	8.5	131	9,530	7.9	123	14.3
Massachusetts**	23,933	17.5	308	24,246	17.7	312	4.1
Michigan	25,310	12.3	199	25,636	12.4	201	2.8
Minnesota	13,513	12.7	184	14,065	13.2	191	7.9
Mississippi	6,827	11.3	148	2,949	4.9	64	2.5
Missouri	14,615	12.2	180	7,556	6.3	93	7.5
Montana	1,971	10.9	158	2,119	11.7	169	8.9
Nebraska	2,612	7.4	98	2,927	8.3	110	12.4
Nevada	10,673	21.1	267	11,471	22.7	287	5.7
New Jersey§§	31,742	18.0	276	30,986	17.5	269	5.2
New Mexico	6,386	16.0	213	6,087	15.3	203	5.3
New York	121,993	29.7	488	127,437	31.1	510	—
City	83,220	44.7	694	90,157	48.5	752	8.5
State	38,773	17.3	298	37,280	16.6	286	5.6
North Carolina	29,676	16.0	232	35,088	18.9	274	17.4
North Dakota	887	7.0	103	1,298	10.2	151	40.1

TABLE 2. (Continued) Number, rate,* and ratio† of reported abortions, by residence and occurrence, and percentage of abortions obtained by out-of-state residents,§ by state of occurrence — selected states, United States, 2006¶

State/Area	Residence			Occurrence			% obtained by out-of-state residents
	No.	Rate	Ratio	No.	Rate	Ratio	
Ohio	31,582	13.6	210	32,936	14.2	219	6.0
Oklahoma	7,274	10.1	135	7,088	9.8	131	3.5
Oregon	10,548	14.3	217	11,732	15.9	241	12.5
Pennsylvania	38,381	15.7	257	36,731	15.0	246	4.2
Rhode Island	3,810	17.0	308	4,828	21.5	390	23.6
South Carolina	12,683	14.2	204	7,005	7.8	113	4.2
South Dakota	868	5.7	73	748	4.9	63	15.4
Tennessee	14,933	11.9	177	17,883	14.2	212	22.2
Texas	79,266	15.8	198	81,883	16.3	205	3.6
Utah	3,595	6.3	67	3,753	6.5	70	8.2
Vermont	1,478	111.9	227	1,610	13.0	247	9.6
Virginia	28,418	17.5	264	27,349	16.8	254	5.3
Washington	24,798	18.7	285	24,627	18.6	283	4.8
West Virginia	2,493	7.1	119	2,036	5.8	97	10.3
Wisconsin	10,815	9.6	150	9,580	8.5	132	2.4
Wyoming	275	2.7	36	7	0.1	1	0.0
Other residence¶¶	2,739	—	—	NA***	NA	NA	NA
Total known	738,908			846,181	15.9	233	8.4
Total unknown residence†††	7,775						
Total not reported by residence§§§	99,498						
Total	846,181	15.9	233				

* Number of abortions per 1,000 women aged 15–44 years.

† Number of abortions per 1,000 live births.

§ Based on number of abortions for which residence status was known.

¶ Excludes three states (California, Louisiana, and New Hampshire) that did not report data for 2006.

** State reported numbers of abortions for both in-state and out-of-state residents; however, for out-of-state residents, only the total number was provided and not the individual state or area of residence.

†† State reported abortions by occurrence only.

§§ Numbers do not include private physicians' procedures.

¶¶ Women known to reside out of state whose residence was listed as Canada, Mexico, or "other."

*** Not applicable.

††† Reported as unknown residence by areas otherwise providing information on residence status.

§§§ Total for selected states that did not report abortions by residence.

TABLE 3. Reported abortions, by age group of women who obtained an abortion and state of occurrence — selected states, United States, 2006*

State/Area	Age group (yrs)														Total			
	<15		15–19		20–24		25–29		30–34		35–39		≥40		Unknown		No.	(%)†
	No.	(%)	No.	(%)	No.	(%)	No.	(%)	No.	(%)	No.	(%)	No.	(%)	No.	(%)	No.	(%)
Alabama	98	(0.8)	2,082	(17.9)	4,078	(35.0)	2,799	(24.0)	1,511	(13.0)	819	(7.0)	267	(2.3)	0	(0)	11,654	(100.0)
Alaska	7	(0.4)	362	(18.8)	667	(34.7)	447	(23.2)	224	(11.6)	147	(7.6)	54	(2.8)	15	(0.8)	1,923	(100.0)
Arizona	71	(0.7)	1,896	(17.5)	3,621	(33.4)	2,335	(21.5)	1,422	(13.1)	910	(8.4)	431	(4.0)	150	(1.4)	10,836	(100.0)
Arkansas	46	(0.9)	910	(18.2)	1,592	(31.9)	1,182	(23.7)	665	(13.3)	442	(8.9)	—§	—	—	—	4,988	(100.0)
Colorado	61	(0.6)	1,933	(17.5)	3,702	(33.5)	2,417	(21.9)	1,491	(13.5)	1,042	(9.4)	362	(3.3)	40	(0.4)	11,048	(100.0)
Connecticut	85	(0.6)	2,648	(18.8)	4,562	(32.3)	3,129	(22.2)	1,783	(12.6)	1,196	(8.5)	395	(2.8)	314	(2.2)	14,112	(100.0)
Delaware¶	28	(0.8)	604	(17.5)	1,154	(33.4)	833	(24.1)	445	(12.9)	272	(7.9)	92	(2.7)	23	(0.7)	3,451	(100.0)
Dist. of Columbia	20	(0.7)	474	(17.6)	803	(29.8)	686	(25.5)	392	(14.6)	235	(8.7)	82	(3.0)	0	(0)	2,692	(100.0)
Georgia	174	(0.6)	4,346	(14.2)	9,605	(31.4)	7,912	(25.9)	4,812	(15.8)	2,858	(9.4)	843	(2.8)	0	(0)	30,550	(100.0)
Hawaii	25	(0.6)	799	(20.0)	1,343	(33.7)	843	(21.1)	514	(12.9)	321	(8.0)	139	(3.5)	6	(0.2)	3,990	(100.0)
Idaho	8	(0.6)	257	(20.6)	398	(31.9)	268	(21.5)	162	(13.0)	112	(9.0)	43	(3.4)	1	(0.1)	1,249	(100.0)
Illinois¶¶	282	(0.7)	6,834	(17.0)	12,376	(30.9)	9,771	(24.4)	5,946	(14.8)	3,678	(9.2)	1,207	(3.0)	0	(0)	40,094	(100.0)
Indiana	63	(0.6)	1,637	(15.4)	3,597	(33.9)	2,449	(23.1)	1,478	(13.9)	937	(8.8)	306	(2.9)	147	(1.4)	10,614	(100.0)
Iowa	35	(0.5)	1,187	(17.7)	2,354	(35.0)	1,504	(22.4)	852	(12.7)	567	(8.4)	204	(3.0)	19	(0.3)	6,722	(100.0)
Kansas	67	(0.6)	1,883	(16.9)	3,758	(33.6)	2,696	(24.1)	1,533	(13.7)	958	(8.6)	278	(2.5)	0	(0)	11,173	(100.0)
Kentucky	27	(0.7)	635	(16.2)	1,247	(31.9)	937	(24.0)	556	(14.2)	365	(9.3)	109	(2.8)	36	(0.9)	3,912	(100.0)
Maine	11	(0.4)	472	(17.7)	964	(36.1)	561	(21.0)	330	(12.4)	209	(7.8)	77	(2.9)	46	(1.7)	2,670	(100.0)
Maryland¶	31	(0.4)	1,175	(14.4)	2,518	(30.9)	2,067	(25.4)	1,313	(16.1)	795	(9.8)	240	(2.9)	0	(0)	8,139	(100.0)
Massachusetts	72	(0.3)	3,947	(16.3)	7,725	(31.9)	5,682	(23.4)	3,375	(13.9)	2,421	(10.0)	985	(4.1)	39	(0.2)	24,246	(100.0)
Michigan	147	(0.6)	4,547	(17.7)	8,259	(32.2)	5,913	(23.1)	3,701	(14.4)	2,306	(9.0)	745	(2.9)	18	(0.1)	25,636	(100.0)
Minnesota	63	(0.4)	2,078	(14.8)	4,789	(34.0)	3,465	(24.6)	1,964	(14.0)	1,267	(9.0)	439	(3.1)	0	(0)	14,065	(100.0)
Mississippi	17	(0.6)	450	(15.3)	1,115	(37.8)	735	(24.9)	381	(12.9)	192	(6.5)	57	(1.9)	2	(0.1)	2,949	(100.0)
Missouri	50	(0.7)	1,228	(16.3)	2,594	(34.3)	1,761	(23.3)	1,043	(13.8)	627	(8.3)	253	(3.3)	0	(0)	7,556	(100.0)
Montana	13	(0.6)	400	(18.9)	773	(36.5)	453	(21.4)	234	(11.0)	158	(7.5)	87	(4.1)	1	(0)	2,119	(100.0)
Nebraska	12	(0.4)	448	(15.3)	991	(33.9)	716	(24.5)	423	(14.5)	241	(8.2)	96	(3.3)	0	(0)	2,927	(100.0)
Nevada	48	(0.4)	1,785	(15.6)	3,388	(29.5)	2,561	(22.3)	1,716	(15.0)	1,090	(9.5)	393	(3.4)	490	(4.3)	11,471	(100.0)
New Jersey††	139	(0.4)	5,453	(17.6)	9,467	(30.6)	7,679	(24.8)	4,438	(14.3)	2,691	(8.7)	1,119	(3.6)	0	(0)	30,986	(100.0)
New Mexico	22	(0.4)	1,186	(19.5)	2,170	(35.6)	1,346	(22.1)	705	(11.6)	393	(6.5)	173	(2.8)	92	(1.5)	6,087	(100.0)
New York	687	(0.5)	22,599	(17.7)	38,612	(30.3)	30,231	(23.7)	18,778	(14.7)	11,681	(9.2)	4,309	(3.4)	540	(0.4)	127,437	(100.0)
City	472	(0.5)	15,058	(16.7)	26,105	(29.0)	22,303	(24.7)	14,183	(15.7)	8,538	(9.5)	3,119	(3.5)	379	(0.4)	90,157	(100.0)
State	215	(0.6)	7,541	(20.2)	12,507	(33.5)	7,928	(21.3)	4,595	(12.3)	3,143	(8.4)	1,190	(3.2)	161	(0.4)	37,280	(100.0)
North Carolina	179	(0.5)	5,251	(15.0)	11,548	(32.9)	8,230	(23.5)	4,864	(13.9)	2,749	(7.8)	892	(2.5)	1,375	(3.9)	35,088	(100.0)
North Dakota	5	(0.4)	224	(17.3)	497	(38.3)	303	(23.3)	139	(10.7)	101	(7.8)	29	(2.2)	0	(0)	1,298	(100.0)
Ohio	292	(0.9)	5,603	(17.0)	11,123	(33.8)	7,720	(23.4)	4,333	(13.2)	2,741	(8.3)	898	(2.7)	226	(0.7)	32,936	(100.0)
Oklahoma	39	(0.6)	1,109	(15.6)	2,550	(36.0)	1,603	(22.6)	937	(13.2)	587	(8.3)	201	(2.8)	62	(0.9)	7,088	(100.0)
Oregon	59	(0.5)	1,998	(17.0)	3,805	(32.4)	2,760	(23.5)	1,624	(13.8)	1,048	(8.9)	396	(3.4)	42	(0.4)	11,732	(100.0)
Pennsylvania	207	(0.6)	6,208	(16.9)	12,454	(33.9)	8,401	(22.9)	5,052	(13.8)	3,205	(8.7)	1,196	(3.3)	8	(0)	36,731	(100.0)
Rhode Island	15	(0.3)	850	(17.6)	1,662	(34.4)	1,134	(23.5)	555	(11.5)	406	(8.4)	164	(3.4)	42	(0.9)	4,828	(100.0)
South Carolina	39	(0.6)	1,255	(17.9)	2,284	(32.6)	1,651	(23.6)	979	(14.0)	590	(8.4)	205	(2.9)	2	(0)	7,005	(100.0)
South Dakota	2	(0.3)	122	(16.3)	290	(38.8)	157	(21.0)	94	(12.6)	60	(8.0)	23	(3.1)	0	(0)	748	(100.0)
Tennessee	100	(0.6)	2,781	(15.6)	4,769	(26.7)	4,379	(24.5)	2,042	(11.4)	1,462	(8.2)	305	(1.7)	2,045	(11.4)	17,883	(100.0)
Texas	229	(0.3)	10,301	(12.6)	28,039	(34.2)	21,001	(25.6)	12,358	(15.1)	7,227	(8.8)	2,715	(3.3)	13	(0)	81,883	(100.0)
Utah	12	(0.3)	616	(16.4)	1,238	(33.0)	909	(24.2)	503	(13.4)	311	(8.3)	109	(2.9)	55	(1.5)	3,753	(100.0)
Vermont	5	(0.3)	295	(18.3)	593	(36.8)	329	(20.4)	184	(11.4)	144	(8.9)	60	(3.7)	0	(0)	1,610	(100.0)
Virginia	124	(0.5)	3,857	(14.1)	9,200	(33.6)	6,775	(24.8)	3,926	(14.4)	2,426	(8.9)	859	(3.1)	182	(0.7)	27,349	(100.0)
Washington	91	(0.4)	4,424	(18.0)	8,175	(33.2)	5,688	(23.1)	3,152	(12.8)	2,230	(9.1)	840	(3.4)	27	(0.1)	24,627	(100.0)
West Virginia	11	(0.5)	309	(15.2)	655	(32.2)	526	(25.8)	312	(15.3)	165	(8.1)	53	(2.6)	5	(0.2)	2,036	(100.0)
Wisconsin¶	47	(0.5)	1,615	(17.3)	3,162	(33.8)	2,187	(23.4)	1,288	(13.8)	763	(8.2)	290	(3.1)	0	(0)	9,352	(100.0)
Wyoming	—	—	—	—	—	—	—	—	—	—	—	—	—	—	—	—	7	(100.0)
Total§§	3,865	(0.5)	121,073	(16.3)	240,266	(32.4)	177,131	(23.9)	104,529	(14.1)	65,145	(8.8)	23,020	(3.1)	6,063	(0.8)	741,250	(100.0)
Percentage of known values		(0.5)		(16.5)		(32.7)		(24.1)		(14.2)		(8.9)		(3.2)				
Abortion rate¶¶¶	1.2		14.8		29.9		22.2		13.6		7.8		2.6				14.0	
Abortion ratio***	754		351		280		188		140		170		276				219	

TABLE 3. (Continued) Reported abortions, by age group of women who obtained an abortion and state of occurrence — selected states, United States, 2006*

* Data from 48 reporting areas; excludes three states (California, Louisiana, and New Hampshire) that did not report data and one state (Florida) that did not report data by age.
† Percentages for the individual component categories might not add up to 100.0% because of rounding.
‡ Cell details not displayed because of small numbers (N<5).
§ Includes residents only.
** Number of procedures for women aged ≥45 years are included in the unknown age group because age was not specified for women aged ≥45 years (women aged ≥45 years accounted for <0.2% of abortions in previous years). Because of how these numbers were distributed, for Illinois, the category "aged ≥40 years" represents women aged 40–44 years.
†† Numbers do not include private physicians' procedures.
‡‡ Small numbers (N<5) that have been removed from individual cells have been subtracted from the total.
§§ Calculated as the number of abortions obtained by women in a given age group per 1,000 women in that same age group. Adolescents aged 13–14 years were used as the denominator for the group of adolescents aged <15 years, and women aged 40–44 years were used as the denominator for the group of women aged ≥40 years. Women aged 15–44 years were used as the denominator for the overall rate. For each state, data for women of unknown age were distributed according to the distribution of abortions among women of known age for that state.
*** Calculated as the number of abortions obtained by women in a given age group per 1,000 live births to women in that same age group. Births to adolescents aged 13–14 years were used as the denominator for the group of adolescents aged <15 years, and births to women aged 40–44 years were used as the denominator for the group of women aged ≥40 years. Births to women aged 15–44 years were used as the denominator for the overall ratio. For each state, abortions for women of unknown age were distributed according to the distribution of abortions among women of known age for that state.

TABLE 4. Reported abortions, by age group* and year — selected states, United States, 1997–2006†

Characteristic	1997	1998	1999	2000	2001	2002	2003	2004	2005	2006	% change during	
											2005–2006	1997–2006
Age group (yrs)	% of abortions											
<15	0.7	0.7	0.7	0.6	0.6	0.6	0.6	0.6	0.6	0.5	-16.7	-28.6
15–19	19.3	19.1	18.5	18.1	17.5	16.9	16.7	16.6	16.5	16.5	0.0	-14.5
20–24	31.6	31.7	32.1	32.7	33.3	33.3	33.4	33.1	32.8	32.6	-0.6	3.2
25–29	23.5	23.5	23.3	22.9	22.5	22.7	22.7	23.1	23.6	24.1	2.1	2.6
30–34	14.0	14.0	14.0	14.3	14.7	15.0	14.9	14.8	14.6	14.2	-2.7	1.4
35–39	8.2	8.3	8.5	8.4	8.4	8.5	8.4	8.5	8.8	8.9	1.1	8.5
≥40	2.6	2.7	2.8	2.9	3.0	3.2	3.2	3.2	3.2	3.2	0.0	23.1
	Abortion rate‡											
<15	2.0	1.9	1.7	1.6	1.5	1.4	1.4	1.3	1.3	1.2	-4.4	-39.5
15–19	21.1	20.1	18.8	17.6	17.0	16.3	16.0	15.3	14.7	15.0	2.1	-29.0
20–24	37.5	36.8	35.5	33.6	32.8	32.0	31.4	30.2	29.4	30.3	3.0	-19.4
25–29	25.5	25.5	24.9	22.9	23.1	23.4	23.0	22.4	21.9	22.5	2.5	-11.8
30–34	13.8	13.9	13.8	13.4	13.7	13.9	13.8	13.6	13.5	13.8	2.8	0.4
35–39	7.4	7.4	7.3	7.1	7.2	7.4	7.5	7.5	7.7	7.9	3.3	7.3
≥40	2.4	2.5	2.4	2.4	2.5	2.6	2.6	2.6	2.6	2.6	2.1	7.4
	Abortion ratio§											
<15	738	764	720	726	761	775	844	784	774	759	-2.0	2.8
15–19	416	400	383	372	378	381	385	373	365	357	-2.0	-14.2
20–24	351	336	322	309	313	313	308	299	289	285	-1.4	-18.6
25–29	227	220	211	202	204	205	199	194	190	192	0.8	-15.4
30–34	162	159	154	147	149	150	145	143	141	141	0.3	-12.9
35–39	210	201	194	182	182	181	174	170	169	171	0.9	-18.7
≥40	353	340	331	303	306	312	294	285	279	277	-0.6	-21.3
Total no. of abortions	793,367	781,276	755,101	739,278	739,469	737,557	731,461	715,035	703,264	723,481		

* Excludes women for whom age was reported as unknown.

† Data from 44 reporting areas; by year, these reporting areas represent 88%–90% of the abortions reported by the 46 reporting areas that provided data every year during 1997–2006. Excludes three states (California, Louisiana, and New Hampshire) that did not report data and five states (Alaska, Florida, Iowa, Oklahoma, and West Virginia) that did not provide numbers by age meeting reporting standards for ≥1 year.

‡ Calculated as the number of abortions obtained by women in a given age group per 1,000 women in that same age group. Adolescents aged 13–14 years were used as the denominator for the group of adolescents aged <15 years, and women aged 40–44 years were used as the denominator for the group of women aged ≥40 years. Women aged 15–44 years were used as the denominator for the overall rate. For each state, abortions for women of unknown age were distributed according to the distribution of abortions among women of known age for that state.

§ Calculated as the number of abortions obtained by women in a given age group per 1,000 live births to women in that same age group. Births to adolescents aged 13–14 years were used as the denominator for the group of adolescents aged <15 years, and births to women aged 40–44 years were used as the denominator for the group of women aged ≥40 years. Births to women aged 15–44 years were used as the denominator for the overall ratio. For each state, abortions for women of unknown age were distributed according to the distribution of abortions among women of known age for that state.

TABLE 5. Reported abortions obtained by adolescents, by known age and state of occurrence — selected states, United States, 2006*

State/Area	Age (yrs)												Total	
	<15		15		16		17		18		19			
	No	(%)	No	(%)	No	(%)	No	(%)	No	(%)	No	(%)	No	(%)†
Alabama	98	(4.5)	142	(6.5)	266	(12.2)	336	(15.4)	621	(28.5)	717	(32.9)	2,180	(100.0)
Alaska	7	(1.9)	20	(5.4)	47	(12.7)	54	(14.6)	117	(31.7)	124	(33.6)	369	(100.0)
Arizona	71	(3.6)	100	(5.1)	219	(11.1)	315	(16.0)	557	(28.3)	705	(35.8)	1,967	(100.0)
Arkansas	46	(4.8)	53	(5.5)	118	(12.3)	184	(19.2)	260	(27.2)	295	(30.9)	956	(100.0)
Colorado	61	(3.1)	126	(6.3)	188	(9.4)	326	(16.3)	603	(30.2)	690	(34.9)	1,994	(100.0)
Connecticut	85	(3.1)	155	(5.7)	372	(13.6)	535	(19.6)	752	(27.5)	834	(30.5)	2,733	(100.0)
Delaware§	28	(4.4)	40	(6.3)	64	(10.1)	132	(20.9)	196	(31.0)	172	(27.2)	632	(100.0)
District of Columbia	20	(4.0)	31	(6.3)	75	(15.2)	115	(23.3)	112	(22.7)	141	(28.5)	494	(100.0)
Georgia	174	(3.8)	333	(7.4)	488	(10.8)	692	(15.3)	1,268	(28.1)	1,565	(34.6)	4,520	(100.0)
Hawaii	25	(3.0)	47	(5.7)	131	(15.9)	183	(22.2)	193	(23.4)	245	(29.7)	824	(100.0)
Idaho	8	(3.0)	19	(7.2)	35	(13.2)	59	(22.3)	70	(26.4)	74	(27.9)	265	(100.0)
Indiana	63	(3.7)	118	(6.9)	175	(10.3)	239	(14.1)	491	(28.9)	614	(36.1)	1,700	(100.0)
Iowa	35	(2.9)	72	(5.9)	151	(12.4)	205	(16.8)	338	(27.7)	421	(34.5)	1,222	(100.0)
Kansas	67	(3.4)	136	(7.0)	239	(12.3)	316	(16.2)	529	(27.1)	663	(34.0)	1,950	(100.0)
Kentucky	27	(4.1)	45	(6.8)	84	(12.7)	99	(15.0)	195	(29.5)	212	(32.0)	662	(100.0)
Maine	11	(2.3)	26	(5.4)	60	(12.4)	92	(19.0)	140	(29.0)	154	(31.9)	483	(100.0)
Massachusetts	72	(1.8)	214	(5.3)	427	(10.6)	659	(16.4)	1,196	(29.8)	1,451	(36.1)	4,019	(100.0)
Michigan	147	(3.1)	268	(5.7)	572	(12.2)	785	(16.7)	1,379	(29.4)	1,543	(32.9)	4,694	(100.0)
Minnesota	63	(2.9)	122	(5.7)	258	(12.1)	350	(16.3)	609	(28.4)	739	(34.5)	2,141	(100.0)
Mississippi	17	(3.6)	32	(6.9)	45	(9.6)	64	(13.7)	152	(32.5)	157	(33.6)	467	(100.0)
Missouri	50	(3.9)	76	(5.9)	143	(11.2)	179	(14.0)	361	(28.2)	469	(36.7)	1,278	(100.0)
Montana	13	(3.1)	26	(6.3)	58	(14.0)	64	(15.5)	123	(29.8)	129	(31.2)	413	(100.0)
Nebraska	12	(2.6)	27	(5.9)	58	(12.6)	65	(14.1)	127	(27.6)	171	(37.2)	460	(100.0)
Nevada	48	(2.6)	94	(5.1)	221	(12.1)	385	(21.0)	509	(27.8)	576	(31.4)	1,833	(100.0)
New Jersey¶	139	(2.5)	321	(5.7)	682	(12.2)	1,056	(18.9)	1,497	(26.8)	1,897	(33.9)	5,592	(100.0)
New Mexico	22	(1.8)	94	(7.8)	168	(13.9)	218	(18.0)	317	(26.2)	389	(32.2)	1,208	(100.0)
New York	687	(3.0)	1,525	(6.5)	2,986	(12.8)	4,755	(20.4)	6,250	(26.8)	7,083	(30.4)	23,286	(100.0)
City	472	(3.0)	1,022	(6.6)	2,009	(12.9)	3,169	(20.4)	4,160	(26.8)	4,698	(30.3)	15,530	(100.0)
State	215	(2.8)	503	(6.5)	977	(12.6)	1,586	(20.4)	2,090	(26.9)	2,385	(30.8)	7,756	(100.0)
North Carolina	179	(3.3)	334	(6.2)	601	(11.1)	855	(15.7)	1,534	(28.3)	1,927	(35.5)	5,430	(100.0)
North Dakota	5	(2.2)	14	(6.1)	15	(6.6)	30	(13.1)	66	(28.8)	99	(43.2)	229	(100.0)
Ohio	292	(5.0)	419	(7.1)	725	(12.3)	944	(16.0)	1,629	(27.6)	1,886	(32.0)	5,895	(100.0)
Oklahoma	39	(3.4)	64	(5.6)	123	(10.7)	174	(15.2)	359	(31.3)	389	(33.9)	1,148	(100.0)
Oregon	59	(2.9)	121	(5.9)	255	(12.4)	394	(19.2)	537	(26.2)	687	(33.5)	2,053	(100.0)
Pennsylvania	207	(3.2)	399	(6.2)	719	(11.2)	953	(14.9)	1,907	(29.7)	2,230	(34.8)	6,415	(100.0)
Rhode Island	15	(1.7)	49	(5.7)	86	(9.9)	111	(12.8)	249	(28.8)	355	(41.0)	865	(100.0)
South Carolina	39	(3.0)	74	(5.7)	142	(11.0)	294	(22.7)	338	(26.1)	407	(31.5)	1,294	(100.0)
South Dakota	—**	—	—	—	19	(15.3)	18	(14.5)	41	(33.1)	39	(31.5)	124	(100.0)
Tennessee	100	(3.5)	199	(6.9)	291	(10.1)	412	(14.3)	852	(29.6)	1,027	(35.6)	2,881	(100.0)
Texas	229	(2.2)	514	(4.9)	1,028	(9.8)	1,663	(15.8)	2,759	(26.2)	4,337	(41.2)	10,530	(100.0)
Utah	12	(1.9)	38	(6.1)	70	(11.1)	77	(12.3)	218	(34.7)	213	(33.9)	628	(100.0)
Vermont	5	(1.7)	16	(5.3)	24	(8.0)	58	(19.3)	90	(30.0)	107	(35.7)	300	(100.0)
Virginia	124	(3.1)	205	(5.1)	365	(9.2)	555	(13.9)	1,238	(31.1)	1,494	(37.5)	3,981	(100.0)
Washington	91	(2.0)	230	(5.1)	571	(12.6)	824	(18.3)	1,285	(28.5)	1,514	(33.5)	4,515	(100.0)
West Virginia	11	(3.4)	17	(5.3)	27	(8.4)	53	(16.6)	88	(27.5)	124	(38.8)	320	(100.0)
Wisconsin§	47	(2.8)	115	(6.9)	180	(10.8)	254	(15.3)	477	(28.7)	589	(35.4)	1,662	(100.0)
Wyoming	—	—	—	—	—	—	—	—	—	—	—	—	1	(100.0)
Total††	3,550	(3.0)	7,070	(6.1)	13,571	(11.6)	20,131	(17.3)	32,629	(28.0)	39,654	(34.0)	116,613	(100.0)
Abortion rate§§	1.2		4.6		8.7		13.3		22.1		26.8		11.0	
Abortion ratio¶¶	749		529		432		354		358		310		358	

* Data from 46 reporting areas; excludes three states (California, Louisiana, and New Hampshire) that did not report data and three states (Florida, Illinois, and Maryland) that did not report age among adolescents by individual year.

† Percentages for the individual component categories might not add up to 100.0 because of rounding.

§ Includes residents only.

¶ Numbers do not include private physicians' procedures.

** Cell details not displayed because of small numbers (N<5).

†† Small numbers (N<5) that have been removed from individual cells have been subtracted from the total.

§§ Calculated as the number of abortions obtained by adolescents in a given age group per 1,000 adolescents in that same age group. Adolescents aged 13–14 years were used as the denominator for adolescents aged <15 years.

¶¶ Calculated as the number of abortions obtained by adolescents in a given age group per 1,000 live births to adolescents in that same age group. Births to adolescents aged 13–14 years were used as the denominator for adolescents aged <15 years.

TABLE 6. Reported abortions among adolescents, by age and year — selected states, United States, 1997–2006*

Age (yrs)	1997	1998	1999	2000	2001	2002	2003	2004	2005	2006	% change during	
											2005–2006	1997–2006
	% of abortions											
<15	3.6	3.5	3.4	3.4	3.4	3.4	3.4	3.3	3.3	3.0	-9.2	-15.2
15	6.7	6.6	6.2	6.3	6.2	6.2	6.3	6.1	6.4	6.1	-5.0	-9.9
16	12.4	12.1	11.6	11.4	11.3	11.6	11.6	11.5	11.4	11.6	2.3	-6.1
17	18.1	18.1	17.7	17.2	17.1	17.3	17.3	17.0	17.2	17.3	0.6	-4.1
18	27.8	28.2	28.0	28.2	27.9	27.6	28.1	28.2	27.7	27.9	0.7	0.3
19	31.4	31.5	33.1	33.6	34.2	33.9	33.3	33.9	33.9	34.0	0.2	8.3
	Abortion rate†											
<15	2.0	1.9	1.7	1.6	1.5	1.4	1.4	1.3	1.3	1.2	-5.8	-39.3
15	7.3	6.9	6.2	5.8	5.5	5.3	5.3	4.9	4.8	4.7	-1.2	-35.4
16	13.7	12.7	11.5	10.7	10.0	9.9	9.8	9.3	8.9	8.9	0.7	-35.0
17	19.4	19.1	17.2	15.9	15.3	14.8	14.6	13.9	13.6	13.8	1.3	-29.3
18	31.7	29.7	28.0	25.7	25.0	23.8	23.8	22.9	22.2	22.7	2.2	-28.4
19	34.6	32.8	31.1	29.8	30.0	29.1	28.4	27.5	26.8	27.6	2.9	-20.4
	Abortion ratio‡											
<15	748	765	721	730	757	782	854	790	795	761	-4.3	1.8
15	549	545	519	524	534	567	572	544	558	546	-2.2	-0.6
16	463	452	435	429	436	454	474	450	447	446	-0.3	-3.6
17	393	396	378	360	376	379	387	375	373	367	-1.5	-6.5
18	434	414	398	386	389	394	402	395	380	372	-2.2	-14.4
19	392	366	353	342	345	343	345	338	329	323	-1.9	-17.6
Total no. of abortions	143,578	138,516	131,094	125,162	120,936	116,528	116,084	112,792	110,513	112,892		

* Data from 41 reporting areas; by year, these reporting areas represent 82%–84% of the abortions reported by the 46 reporting areas that provided data every year during 1997–2006. Excludes three states (California, Louisiana, and New Hampshire) that did not report data and eight states (Alaska, Florida, Indiana, Iowa, Kentucky, Maryland, Oklahoma, and Washington) that did not provide numbers among adolescents by age meeting reporting standards for ≥1 year.

† Calculated as the number of abortions obtained by adolescents in a given age group per 1,000 adolescents in that same age group. Adolescents aged 13–14 years were used as the denominator for adolescents aged <15 years.

‡ Calculated as the number of abortions obtained by adolescents in a given age group per 1,000 live births to adolescents in that same age group. Births to adolescents aged 13–14 years were used as the denominator for adolescents aged <15 years.

TABLE 7. Reported abortions, by weeks of gestation and state of occurrence — selected states, United States, 2006*

State/Area	Weeks															
	≤8		9–10		11–12		13–15		16–20		≥21		Unknown		Total	
	No.	(%)	No.	(%)	No.	(%)	No.	(%)	No.	(%)	No.	(%)	No.	(%)	No.	(%)†
Alabama§	6,914	(59.3)	2,016	(17.3)	1,208	(10.4)	937	(8.0)	525	(4.5)	26	(0.2)	28	(0.2)	11,654	(100.0)
Alaska	1,153	(60.0)	432	(22.5)	223	(11.6)	87	(4.5)	0	(0)	15	(0.8)	13	(0.7)	1,923	(100.0)
Arizona§	6,937	(64.0)	1,954	(18.0)	875	(8.1)	520	(4.8)	357	(3.3)	95	(0.9)	98	(0.9)	10,836	(100.0)
Arkansas¶	2,885	(57.8)	915	(18.3)	464	(9.3)	397	(8.0)	325	(6.5)	—**	—	—	—	4,988	(100.0)
Colorado§	7,293	(66.0)	1,620	(14.7)	838	(7.6)	657	(5.9)	355	(3.2)	258	(2.3)	27	(0.2)	11,048	(100.0)
Connecticut††	8,632	(61.2)	2,343	(16.6)	1,357	(9.6)	914	(6.5)	375	(2.7)	17	(0.1)	474	(3.4)	14,112	(100.0)
Delaware§,§§	2,144	(62.1)	623	(18.1)	342	(9.9)	208	(6.0)	112	(3.2)	15	(0.4)	7	(0.2)	3,451	(100.0)
District of Columbia¶	1,783	(66.2)	294	(10.9)	165	(6.1)	226	(8.4)	214	(7.9)	0	(0)	10	(0.4)	2,692	(100.0)
Georgia	17,126	(56.1)	6,107	(20.0)	3,140	(10.3)	1,852	(6.1)	1,425	(4.7)	900	(2.9)	0	(0)	30,550	(100.0)
Hawaii§	2,198	(55.1)	757	(19.0)	474	(11.9)	265	(6.6)	245	(6.1)	28	(0.7)	23	(0.6)	3,990	(100.0)
Idaho§	804	(64.4)	258	(20.7)	135	(10.8)	37	(3.0)	8	(0.6)	—	—	—	—	1,249	(100.0)
Indiana§	6,042	(56.9)	1,918	(18.1)	1,007	(9.5)	297	(2.8)	116	(1.1)	0	(0)	1,234	(11.6)	10,614	(100.0)
Iowa¶	4,840	(72.0)	873	(13.0)	567	(8.4)	272	(4.0)	145	(2.2)	9	(0.1)	16	(0.2)	6,722	(100.0)
Kansas	7,054	(63.1)	1,600	(14.3)	930	(8.3)	685	(6.1)	486	(4.3)	418	(3.7)	0	(0)	11,173	(100.0)
Kentucky	2,256	(57.7)	598	(15.3)	394	(10.1)	266	(6.8)	259	(6.6)	51	(1.3)	88	(2.2)	3,912	(100.0)
Maine¶¶	1,778	(66.6)	490	(18.4)	279	(10.4)	98	(3.7)	16	(0.6)	9	(0.3)	0	(0)	2,670	(100.0)
Michigan	16,582	(64.7)	4,272	(16.7)	2,201	(8.6)	1,799	(7.0)	681	(2.7)	88	(0.3)	13	(0.1)	25,636	(100.0)
Minnesota§	8,913	(63.4)	2,281	(16.2)	1,268	(9.0)	817	(5.8)	733	(5.2)	53	(0.4)	0	(0)	14,065	(100.0)
Missouri	4,505	(59.6)	1,408	(18.6)	925	(12.2)	378	(5.0)	244	(3.2)	46	(0.6)	50	(0.7)	7,556	(100.0)
Montana§	1,167	(55.1)	435	(20.5)	253	(11.9)	169	(8.0)	92	(4.3)	—	—	—	—	2,119	(100.0)
Nevada§	5,938	(51.8)	2,020	(17.6)	1,118	(9.7)	653	(5.7)	365	(3.2)	48	(0.4)	1,329	(11.6)	11,471	(100.0)
New Jersey§,***	17,784	(57.4)	4,930	(15.9)	1,788	(5.8)	3,158	(10.2)	2,395	(7.7)	931	(3.0)	0	(0)	30,986	(100.0)
New Mexico	3,686	(60.6)	928	(15.2)	548	(9.0)	415	(6.8)	322	(5.3)	114	(1.9)	74	(1.2)	6,087	(100.0)
New York	71,729	(56.3)	22,123	(17.4)	11,801	(9.3)	8,069	(6.3)	6,005	(4.7)	2,974	(2.3)	4,736	(3.7)	127,437	(100.0)
City	57,716	(64.0)	13,035	(14.5)	6,677	(7.4)	5,000	(5.5)	4,626	(5.1)	2,226	(2.5)	877	(1.0)	90,157	(100.0)
State	14,013	(37.6)	9,088	(24.4)	5,124	(13.7)	3,069	(8.2)	1,379	(3.7)	748	(2.0)	3,859	(10.4)	37,280	(100.0)
North Carolina§	19,662	(56.0)	4,884	(13.9)	2,871	(8.2)	2,255	(6.4)	—	—	—	—	4,230	(12.1)	35,088	(100.0)
North Dakota§	718	(55.3)	305	(23.5)	192	(14.8)	79	(6.1)	—	—	—	—	0	(0)	1,298	(100.0)
Ohio§	17,955	(54.5)	6,329	(19.2)	3,533	(10.7)	2,602	(7.9)	1,545	(4.7)	510	(1.5)	462	(1.4)	32,936	(100.0)
Oklahoma§	4,366	(61.6)	1,343	(18.9)	648	(9.1)	454	(6.4)	262	(3.7)	—	—	—	—	7,088	(100.0)
Oregon§	7,337	(62.5)	1,778	(15.2)	1,087	(9.3)	633	(5.4)	541	(4.6)	230	(2.0)	126	(1.1)	11,732	(100.0)
Pennsylvania¶	21,396	(58.3)	7,238	(19.7)	3,712	(10.1)	2,722	(7.4)	1,416	(3.9)	247	(0.7)	0	(0)	36,731	(100.0)
Rhode Island	3,011	(62.4)	661	(13.7)	397	(8.2)	332	(6.9)	—	—	—	—	309	(6.4)	4,828	(100.0)
South Carolina§	5,240	(74.8)	1,033	(14.7)	633	(9.0)	75	(1.1)	11	(0.2)	13	(0.2)	0	(0)	7,005	(100.0)
South Dakota§	405	(54.1)	185	(24.7)	115	(15.4)	30	(4.0)	6	(0.8)	7	(0.9)	0	(0)	748	(100.0)
Tennessee	11,493	(64.3)	2,958	(16.5)	2,453	(13.7)	601	(3.4)	55	(0.3)	15	(0.1)	308	(1.7)	17,883	(100.0)
Texas§	58,037	(70.9)	11,263	(13.8)	5,732	(7.0)	5,335	(6.5)	965	(1.2)	551	(0.7)	0	(0)	81,883	(100.0)
Utah§	2,433	(64.8)	548	(14.6)	238	(6.3)	268	(7.1)	198	(5.3)	13	(0.3)	55	(1.5)	3,753	(100.0)
Vermont	1,083	(67.3)	283	(17.6)	145	(9.0)	81	(5.0)	13	(0.8)	5	(0.3)	0	(0)	1,610	(100.0)
Virginia§	18,486	(67.6)	4,818	(17.6)	2,773	(10.1)	848	(3.1)	218	(0.8)	45	(0.2)	161	(0.6)	27,349	(100.0)
Washington§	14,888	(60.5)	4,193	(17.0)	2,387	(9.7)	1,402	(5.7)	1,277	(5.2)	431	(1.8)	49	(0.2)	24,627	(100.0)
West Virginia	1,129	(55.5)	423	(20.8)	241	(11.8)	147	(7.2)	77	(3.8)	6	(0.3)	13	(0.6)	2,036	(100.0)
Wisconsin¶,§§	4,836	(51.7)	1,840	(19.7)	1,145	(12.2)	819	(8.8)	520	(5.6)	192	(2.1)	0	(0)	9,352	(100.0)
Wyoming	—	—	—	—	—	—	—	—	—	—	—	—	—	7	(100.0)	
Total†††	402,618	(60.7)	111,277	(16.8)	60,602	(9.1)	41,859	(6.3)	22,904	(3.7)	8,360	(1.3)	13,933	(2.1)	662,895	(100.0)
Percentage of known values		(62.0)		(17.1)		(9.3)		(6.5)		(3.7)		(1.3)				

* Data from 43 reporting areas; excludes three states (California, Louisiana, and New Hampshire) that did not report data and six states (Florida, Illinois, Maryland, Massachusetts, Mississippi and Nebraska) for which gestational age either was not reported or was reported as unknown for >15% of women.

† Percentages for the individual component categories might not add up to 100.0 because of rounding.

§ Weeks of gestation based on physicians' estimates.

¶ Weeks of gestation based on date of last menstrual period.

** Cells detail not displayed because of small numbers (N<5).

†† Numbers obtained at ≤12 weeks of gestation were redistributed according to the distribution among the remaining reporting areas.

§§ Includes residents only.

¶¶ Weeks of gestation based on date of last menstrual period only if physicians' estimates were unavailable.

*** Numbers do not include private physicians' procedures.

††† Small numbers (N<5) that have been removed from individual cells have been subtracted from the total.

TABLE 8. Reported abortions obtained at ≤ 8 weeks of gestation, by known weeks of gestation and state of occurrence — selected states, United States, 2006*

State/Area	Weeks						Total	
	≤ 6		7		8		No.	(%) [†]
Alabama [§]	3,198	(27.4)	2,187	(18.8)	1,529	(13.1)	6,914	(59.3)
Alaska	482	(25.1)	355	(18.5)	316	(16.4)	1,153	(60.0)
Arizona [§]	2,903	(26.8)	2,330	(21.5)	1,704	(15.7)	6,937	(64.0)
Arkansas [¶]	1,576	(31.6)	675	(13.5)	634	(12.7)	2,885	(57.8)
Colorado [§]	3,938	(35.6)	1,795	(16.2)	1,560	(14.1)	7,293	(66.0)
Delaware ^{§, **}	1,071	(31.0)	584	(16.9)	489	(14.2)	2,144	(62.1)
District of Columbia [¶]	1,045	(38.8)	473	(17.6)	265	(9.8)	1,783	(66.2)
Georgia	6,557	(21.5)	5,909	(19.3)	4,660	(15.3)	17,126	(56.1)
Hawaii [§]	786	(19.7)	798	(20.0)	614	(15.4)	2,198	(55.1)
Idaho [§]	306	(24.5)	256	(20.5)	242	(19.4)	804	(64.4)
Indiana [§]	2,785	(26.2)	1,803	(17.0)	1,454	(13.7)	6,042	(56.9)
Iowa [¶]	3,085	(45.9)	1,085	(16.1)	670	(10.0)	4,840	(72.0)
Kansas	3,746	(33.5)	2,037	(18.2)	1,271	(11.4)	7,054	(63.1)
Kentucky	995	(25.4)	742	(19.0)	519	(13.3)	2,256	(57.7)
Maine ^{††}	852	(31.9)	533	(20.0)	393	(14.7)	1,778	(66.6)
Michigan	7,657	(29.9)	5,102	(19.9)	3,823	(14.9)	16,582	(64.7)
Minnesota [§]	3,861	(27.5)	2,995	(21.3)	2,057	(14.6)	8,913	(63.4)
Missouri	1,910	(25.3)	1,505	(19.9)	1,090	(14.4)	4,505	(59.6)
Montana [§]	517	(24.4)	350	(16.5)	300	(14.2)	1,167	(55.1)
Nevada [§]	2,962	(25.8)	1,385	(12.1)	1,591	(13.9)	5,938	(51.8)
New Jersey ^{§, §§}	8,131	(26.2)	5,251	(16.9)	4,402	(14.2)	17,784	(57.4)
New Mexico	1,919	(31.5)	913	(15.0)	854	(14.0)	3,686	(60.6)
New York	32,718	(25.7)	21,270	(16.7)	17,741	(13.9)	71,729	(56.3)
City	30,036	(33.3)	15,884	(17.6)	11,796	(13.1)	57,716	(64.0)
State	2,682	(7.2)	5,386	(14.4)	5,945	(15.9)	14,013	(37.6)
North Carolina [§]	8,959	(25.5)	6,235	(17.8)	4,468	(12.7)	19,662	(56.0)
North Dakota [§]	128	(9.9)	298	(23.0)	292	(22.5)	718	(55.3)
Ohio [§]	7,911	(24.0)	5,340	(16.2)	4,704	(14.3)	17,955	(54.5)
Oklahoma [§]	2,371	(33.5)	1,127	(15.9)	868	(12.2)	4,366	(61.6)
Oregon [§]	3,670	(31.3)	2,094	(17.8)	1,573	(13.4)	7,337	(62.5)
Pennsylvania [¶]	8,711	(23.7)	6,587	(17.9)	6,098	(16.6)	21,396	(58.3)
Rhode Island	1,598	(33.1)	850	(17.6)	563	(11.7)	3,011	(62.4)
South Carolina [§]	3,045	(43.5)	1,307	(18.7)	888	(12.7)	5,240	(74.8)
South Dakota [§]	107	(14.3)	157	(21.0)	141	(18.9)	405	(54.1)
Tennessee	5,205	(29.1)	3,918	(21.9)	2,370	(13.3)	11,493	(64.3)
Texas [§]	33,878	(41.4)	13,640	(16.7)	10,519	(12.8)	58,037	(70.9)
Utah [§]	1,084	(28.9)	868	(23.1)	481	(12.8)	2,433	(64.8)
Vermont	490	(30.4)	328	(20.4)	265	(16.5)	1,083	(67.3)
Virginia [§]	8,554	(31.3)	5,507	(20.1)	4,425	(16.2)	18,486	(67.6)
Washington [§]	6,387	(25.9)	5,074	(20.6)	3,427	(13.9)	14,888	(60.5)
West Virginia	365	(17.9)	413	(20.3)	351	(17.2)	1,129	(55.5)
Wyoming	— ^{¶¶}	—	—	—	—	—	—	—
Total^{***}	185,463	(29.0)	114,076	(17.8)	89,611	(14.0)	389,150	(60.9)
Percentage of known values		(29.6)		(18.2)		(14.3)		(62.2)

* Data from 41 reporting areas; excludes three states (California, Louisiana, and New Hampshire) that did not report data, two states (Connecticut and Wisconsin) that did not provide component weeks of gestation for abortions obtained at ≤ 8 weeks gestation; and six states (Florida, Illinois, Maryland, Massachusetts, Mississippi, and Nebraska) for which gestational age either was not reported or was reported as unknown for $>15\%$ of women.

[†] Percentages might not add up to the total percentage obtained at ≤ 8 weeks because of rounding.

[§] Weeks of gestation based on physicians' estimates.

[¶] Weeks of gestation based on date of last menstrual period.

** Includes residents only.

^{††} Weeks of gestation based on date of last menstrual period only if physicians' estimates were unavailable.

^{§§} Numbers do not include private physicians' procedures.

^{¶¶} Cell detail not displayed because of small numbers (N <5).

^{***} Small numbers (N <5) that have been removed from individual cells have been subtracted from the total.

TABLE 9. Reported abortions, by type of procedure and state of occurrence — selected states, United States, 2006*

State/Area	Procedure											
	Curettage		Intrauterine instillation		Medical		Other†		Unknown		Total	
	No.	(%)	No.	(%)	No.	(%)	No.	(%)	No.	(%)	No.	(%)§
Alabama¶	10,328	(88.6)	6	(0.1)	NA**	NA	1,309	(11.2)	11	(0.1)	11,654	(100.0)
Alaska	1,491	(77.5)	0	(0)	422	(21.9)	10	(0.5)	0	(0)	1,923	(100.0)
Arizona	7,470	(68.9)	—††	—	3,158	(29.1)	—	—	206	(1.9)	10,836	(100.0)
Arkansas	4,982	(99.9)	—	—	5	(0.1)	—	—	0	(0)	4,988	(100.0)
Colorado	8,409	(76.1)	—	—	2,365	(21.4)	273	(2.5)	—	—	11,048	(100.0)
Connecticut	11,832	(83.8)	—	—	2,277	(16.1)	—	—	0	(0)	14,112	(100.0)
Delaware§§	2,845	(82.4)	6	(0.2)	596	(17.3)	—	—	—	—	3,451	(100.0)
District of Columbia	2,237	(83.1)	0	(0)	445	(16.5)	10	(0.4)	0	(0)	2,692	(100.0)
Georgia	27,979	(91.6)	0	(0)	0	(0)	0	(0)	2,571	(8.4)	30,550	(100.0)
Hawaii	3,977	(99.7)	—	—	—	—	0	(0)	11	(0.3)	3,990	(100.0)
Idaho	1,045	(83.7)	—	—	198	(15.9)	—	—	0	(0)	1,249	(100.0)
Indiana	9,133	(86.0)	0	(0)	1,091	(10.3)	139	(1.3)	251	(2.4)	10,614	(100.0)
Iowa	4,680	(69.6)	—	—	1,916	(28.5)	125	(1.9)	—	—	6,722	(100.0)
Kansas	9,634	(86.2)	—	—	1,166	(10.4)	372	(3.3)	—	—	11,173	(100.0)
Maine	2,395	(89.7)	0	(0)	275	(10.3)	0	(0)	0	(0)	2,670	(100.0)
Maryland¶¶ §§	6,959	(85.5)	0	(0)	NA	NA	696	(8.6)	484	(5.9)	8,139	(100.0)
Massachusetts	16,376	(67.5)	2,482	(10.2)	3,701	(15.3)	1,687	(7.0)	0	(0)	24,246	(100.0)
Michigan	23,000	(89.7)	25	(0.1)	2,597	(10.1)	9	(0)	5	(0)	25,636	(100.0)
Minnesota	12,390	(88.1)	9	(0.1)	1,642	(11.7)	24	(0.2)	0	(0)	14,065	(100.0)
Mississippi	2,949	(100.0)	0	(0)	0	(0)	0	(0)	0	(0)	2,949	(100.0)
Missouri	6,216	(82.3)	—	—	1,318	(17.4)	20	(0.3)	—	—	7,556	(100.0)
Montana	1,887	(89.1)	0	(0)	0	(0)	232	(10.9)	0	(0)	2,119	(100.0)
Nebraska	2,828	(96.6)	0	(0)	99	(3.4)	0	(0)	0	(0)	2,927	(100.0)
Nevada	11,048	(96.3)	—	—	0	(0)	—	—	421	(3.7)	11,471	(100.0)
New Jersey¶¶¶	30,230	(97.6)	8	(0)	532	(1.7)	216	(0.7)	0	(0)	30,986	(100.0)
New Mexico	5,080	(83.5)	—	—	646	(10.6)	—	—	357	(5.9)	6,087	(100.0)
New York	116,134	(90.5)	65	(0)	11,169	(8.7)	457	(0.4)	490	(0.4)	128,315***	(100.0)
City	82,529	(91.5)	21	(0)	7,006	(7.8)	111	(0.1)	490	(0.5)	90,157	(100.0)
State	33,605	(88.1)	44	(0.1)	4,163	(10.9)	346	(0.9)	0	(0)	38,158***	(100.0)
North Carolina	30,087	(85.7)	249	(0.7)	3,214	(9.2)	29	(0.1)	1,509	(4.3)	35,088	(100.0)
North Dakota	1,298	(100.0)	0	(0)	0	(0)	0	(0)	0	(0)	1,298	(100.0)
Ohio	27,197	(82.4)	318	(1.0)	4,673	(14.1)	549	(1.7)	288	(0.9)	33,025***	(100.0)
Oklahoma	5,919	(83.5)	0	(0)	785	(11.1)	384	(5.4)	0	(0)	7,088	(100.0)
Oregon	9,741	(83.0)	7	(0.1)	1,966	(16.8)	6	(0.1)	12	(0.1)	11,732	(100.0)
Pennsylvania	32,516	(88.5)	5	(0)	4,181	(11.4)	29	(0.1)	0	(0)	36,731	(100.0)
Rhode Island	4,574	(94.7)	0	(0)	204	(4.2)	6	(0)	44	(0.9)	4,828	(100.0)
South Carolina	5,144	(73.4)	—	—	1,855	(26.5)	5	(0.1)	—	—	7,005	(100.0)
South Dakota	644	(86.1)	0	(0)	104	(13.9)	0	(0)	0	(0)	748	(100.0)
Tennessee	15,429	(86.3)	44	(0.2)	0	(0)	2,277	(12.7)	133	(0.7)	17,883	(100.0)
Texas	68,401	(83.5)	11	(0)	13,464	(16.4)	7	(0)	0	(0)	81,883	(100.0)
Utah	2,685	(71.5)	0	(0)	1,063	(28.3)	—	—	—	—	3,753	(100.0)
Vermont	1,343	(83.4)	0	(0)	265	(16.5)	—	—	—	—	1,610	(100.0)
Virginia	25,580	(93.5)	7	(0)	1,591	(5.8)	149	(0.5)	22	(0.1)	27,349	(100.0)
Washington	21,235	(86.2)	25	(0.1)	3,360	(13.6)	7	(0)	0	(0)	24,627	(100.0)
West Virginia	1,882	(92.4)	—	—	60	(2.9)	—	—	93	(4.6)	2,036	(100.0)
Wyoming	7	(100.0)	0	(0)	0	(0)	0	(0)	0	(0)	7	(100.0)
Total†††	597,216	(86.7)	3,264	(0.5)	72,403	(10.5)	9,027	(1.3)	6,908	(1.0)	688,859	(100.0)
Percentage of known values		(87.6)		(0.5)		(10.6)		(1.3)		(1.0)		

* Data from 45 reporting areas; excludes three states (California, Louisiana, and New Hampshire) that did not report data and four states (Florida, Illinois, Kentucky, and Wisconsin) for which procedure type either was not reported or was reported as unknown for >15% of women.

† Includes hysterotomy/hysterectomy and procedures reported as "other."

§ Percentages for the individual component categories might not add up to 100.0% because of rounding.

¶ Medical abortion not reported separately.

** Not available.

†† Cells detail not displayed because of small numbers (N<5).

§§ Includes residents only.

¶¶ Numbers do not include private physicians' procedures.

*** Exceeds the total number of abortions reported for other variables because of some reported combination procedures.

††† Small numbers (N<5) that have been removed from individual cells have been subtracted from the total.

TABLE 10. Reported abortions, by race of women who obtained an abortion and state of occurrence — selected states, United States, 2006*

State/Area	Race								Total	
	White		Black		Other		Unknown			
	No.	(%)	No.	(%)	No.	(%)	No.	(%)	No.	(%)†
Alabama	4,930	(42.3)	6,523	(56.0)	196	(1.7)	5	(0)	11,654	(100.0)
Alaska	1,112	(57.8)	141	(7.3)	557	(29.0)	113	(5.9)	1,923	(100.0)
Arkansas	3,079	(61.7)	1,527	(30.6)	374	(7.5)	8	(0.2)	4,988	(100.0)
Colorado	7,427	(67.2)	690	(6.2)	2,373	(21.5)	558	(5.1)	11,048	(100.0)
Delaware§	1,857	(53.8)	1,433	(41.5)	144	(4.2)	17	(0.5)	3,451	(100.0)
District of Columbia	565	(21.0)	1,413	(52.5)	703	(26.1)	11	(0.4)	2,692	(100.0)
Georgia	11,573	(37.9)	17,544	(57.4)	1,433	(4.7)	0	(0)	30,550	(100.0)
Hawaii	960	(24.1)	142	(3.6)	2,442	(61.2)	446	(11.2)	3,990	(100.0)
Idaho	1,133	(90.7)	14	(1.1)	66	(5.3)	36	(2.9)	1,249	(100.0)
Indiana	6,805	(64.1)	3,045	(28.7)	315	(3.0)	449	(4.2)	10,614	(100.0)
Iowa	5,332	(79.3)	666	(9.9)	194	(2.9)	530	(7.9)	6,722	(100.0)
Kansas	7,617	(68.2)	2,398	(21.5)	1,150	(10.3)	8	(0.1)	11,173	(100.0)
Kentucky	2,606	(66.6)	848	(21.7)	289	(7.4)	169	(4.3)	3,912	(100.0)
Maine	2,403	(90.0)	51	(1.9)	192	(7.2)	24	(0.9)	2,670	(100.0)
Maryland§	1,665	(20.5)	5,482	(67.4)	948	(11.6)	44	(0.5)	8,139	(100.0)
Massachusetts	12,136	(50.1)	4,653	(19.2)	3,956	(16.3)	3,501	(14.4)	24,246	(100.0)
Michigan	13,710	(53.5)	10,134	(39.5)	1,012	(3.9)	780	(3.0)	25,636	(100.0)
Minnesota	8,847	(62.9)	3,059	(21.7)	1,883	(13.4)	276	(2.0)	14,065	(100.0)
Mississippi	665	(22.6)	2,250	(76.3)	28	(0.9)	6	(0.2)	2,949	(100.0)
Missouri	4,140	(54.8)	3,032	(40.1)	367	(4.9)	17	(0.2)	7,556	(100.0)
Montana	1,699	(80.2)	14	(0.7)	194	(9.2)	212	(10.0)	2,119	(100.0)
New Jersey¶	9,851	(31.8)	13,811	(44.6)	7,253	(23.4)	71	(0.2)	30,986	(100.0)
New York	59,897	(47.0)	52,121	(40.9)	7,164	(5.6)	8,255	(6.5)	127,437	(100.0)
City	37,903	(42.0)	43,125	(47.8)	5,765	(6.4)	3,364	(3.7)	90,157	(100.0)
State	21,994	(59.0)	8,996	(24.1)	1,399	(3.8)	4,891	(13.1)	37,280	(100.0)
North Carolina	14,412	(41.1)	15,917	(45.4)	1,233	(3.5)	3,526	(10.0)	35,088	(100.0)
North Dakota	1,061	(81.7)	48	(3.7)	181	(13.9)	8	(0.6)	1,298	(100.0)
Ohio	18,724	(56.8)	11,683	(35.5)	774	(2.4)	1,755	(5.3)	32,936	(100.0)
Oklahoma	5,105	(72.0)	1,329	(18.8)	654	(9.2)	0	(0)	7,088	(100.0)
Oregon	9,864	(84.2)	665	(5.7)	1,030	(8.8)	158	(1.3)	11,717	(100.0)
Pennsylvania	20,522	(55.9)	14,303	(38.9)	1,894	(5.2)	12	(0)	36,731	(100.0)
Rhode Island	3,117	(64.6)	732	(15.2)	269	(5.6)	710	(14.7)	4,828	(100.0)
South Carolina	4,126	(58.9)	2,696	(38.5)	—**	—	—	—	7,005	(100.0)
South Dakota	628	(84.0)	—	—	89	(11.9)	—	—	748	(100.0)
Tennessee	8,760	(49.0)	8,226	(46.0)	459	(2.6)	438	(2.4)	17,883	(100.0)
Texas	57,777	(70.6)	19,026	(23.2)	4,689	(5.7)	391	(0.5)	81,883	(100.0)
Vermont	1,525	(94.7)	36	(2.2)	41	(2.5)	8	(0.5)	1,610	(100.0)
Virginia	12,166	(44.5)	11,442	(41.8)	2,130	(7.8)	1,611	(5.9)	27,349	(100.0)
West Virginia	1,733	(85.1)	229	(11.2)	74	(3.6)	0	(0)	2,036	(100.0)
Wisconsin§	6,460	(69.1)	2,275	(24.3)	NA††	NA	617	(6.6)	9,352	(100.0)
Total§§	335,989	(53.6)	219,598	(35.0)	46,750	(7.5)	24,770	(3.9)	627,321	(100.0)
Percentage of known values		(55.8)		(36.4)		(7.8)				
Abortion rate¶¶	10.8		33.9		18.3				15.0	
Abortion ratio***	162		459		310				223	

* Data from 39 reporting areas; excludes three states (California, Louisiana, and New Hampshire) that did not report data and ten states (Arizona, Connecticut, Florida, Illinois, Nebraska, Nevada, New Mexico, Utah, Washington, and Wyoming) for which race either was not reported or was reported as unknown for >15% of women.

† Percentages for the individual component categories might not add up to 100.0 because of rounding.

§ Includes residents only.

¶ Numbers do not include private physicians' procedures.

** Cell details not displayed because of small numbers (N<5).

†† Data not available because women of "other" races were combined in the same category as women of unknown race.

§§ Small numbers (N<5) that have been removed from individual cells have been subtracted from the total.

¶¶ Calculated as the number of abortions obtained by women in a given racial group per 1,000 women in that same group. For each state, abortions for women of unknown race were distributed according to the distribution of abortions among women of known race for that state.

*** Calculated as the number of abortions obtained by women in a given racial group per 1,000 live births to women in that same racial group. For each state, abortions for women of unknown race were distributed according to the distribution of abortions among women of known race for that state.

TABLE 11. Reported abortions, by race of women who obtained an abortion* — selected states, United States, 1997–2006†

Race	1997	1998	1999	2000	2001	2002	2003	2004	2005	2006	% change during	
											2005–2006	1997–2006
% of abortions												
White	56.7	56.2	55.2	54.4	54.2	54.5	54.7	54.3	53.9	53.8	-0.3	-5.3
Black	37.4	37.8	38.4	38.9	38.4	38.3	38.0	38.3	38.7	38.5	-0.4	2.9
Other	5.8	6.1	6.5	6.7	7.4	7.2	7.3	7.4	7.4	7.7	4.1	32.7
Abortion rate‡												
White	12.4	12.2	11.7	11.0	11.0	11.0	11.0	10.7	10.5	10.8	2.7	-12.4
Black	37.5	36.9	36.5	35.1	34.8	34.4	34.2	33.4	33.1	33.4	0.8	-10.9
Other	25.6	25.8	26.2	22.5	20.3	19.2	19.2	18.5	17.7	18.8	5.9	-26.8
Abortion ratio¶												
White	199	192	182	170	169	168	166	161	158	158	-0.2	-20.9
Black	546	532	530	505	510	515	507	489	469	450	-4.2	-17.7
Other	384	382	381	347	375	345	337	319	311	315	1.1	-18.1
Total no. abortions	563,367	558,943	544,840	527,574	524,192	519,625	520,357	508,565	501,944	514,144		

* Excludes women for whom race was reported as unknown.

† Data from 29 reporting areas; by year, these areas represent 62%–65% of the abortions reported by the 46 reporting areas that provided data every year during 1997–2006. Excludes three states (California, Louisiana, and New Hampshire) that did not report data and 20 states (Alaska, Arizona, Connecticut, Florida, Illinois, Iowa, Maine, Massachusetts, Michigan, Nebraska, Nevada, New Mexico, New York (excluding New York City), Oklahoma, Rhode Island, South Dakota, Utah, Washington, West Virginia, and Wyoming) that did not provide numbers by race meeting reporting standards for ≥1 year.

‡ Calculated as the number of abortions obtained by women in a given racial group per 1,000 women in that same group. For each state, abortions for women of unknown race were distributed according to the distribution of abortions among women of known race for that state.

¶ Calculated as the number of abortions obtained by women in a given racial group per 1,000 live births to women in that same racial group. For each state, abortions for women of unknown race were distributed according to the distribution of abortions among women of known race for that state.

TABLE 12. Reported abortions, by ethnicity of women who obtained an abortion and state of occurrence — selected states, United States, 2006*

State/Area	Ethnicity						Total	
	Hispanic		Non-Hispanic		Unknown			
	No.	(%)	No.	(%)	No.	(%)	No.	(%)†
Alabama	— [§]	—	11,261	(96.6)	—	—	11,654	(100.0)
Arizona	4,112	(37.9)	6,714	(62.0)	10	(0.1)	10,836	(100.0)
Arkansas	248	(5.0)	4,728	(94.8)	12	(0.2)	4,988	(100.0)
Colorado	2,467	(22.3)	7,367	(66.7)	1,214	(11.0)	11,048	(100.0)
Delaware	385	(11.2)	3,032	(87.9)	34	(1.0)	3,451	(100.0)
District of Columbia	370	(13.7)	2,314	(86.0)	8	(0.3)	2,692	(100.0)
Georgia	1,729	(5.7)	25,006	(81.9)	3,815	(12.5)	30,550	(100.0)
Hawaii	265	(6.6)	3,418	(85.7)	307	(7.7)	3,990	(100.0)
Idaho	136	(10.9)	1,104	(88.4)	9	(0.7)	1,249	(100.0)
Indiana	798	(7.5)	8,398	(79.1)	1,418	(13.4)	10,614	(100.0)
Kansas	1,178	(10.5)	9,926	(88.8)	69	(0.6)	11,173	(100.0)
Maine	61	(2.3)	2,254	(84.4)	355	(13.3)	2,670	(100.0)
Minnesota	796	(5.7)	13,163	(93.6)	106	(0.8)	14,065	(100.0)
Mississippi	35	(1.2)	2,914	(98.8)	0	(0)	2,949	(100.0)
Missouri	233	(3.1)	7,285	(96.4)	38	(0.5)	7,556	(100.0)
New Jersey [¶]	8,348	(26.9)	22,586	(72.9)	52	(0.2)	30,986	(100.0)
New Mexico	3,097	(50.9)	2,522	(41.4)	468	(7.7)	6,087	(100.0)
New York	34,502	(27.1)	85,254	(66.9)	7,681	(6.0)	127,437	(100.0)
City	29,678	(32.9)	57,664	(64.0)	2,815	(3.1)	90,157	(100.0)
State	4,824	(12.9)	27,590	(74.0)	4,866	(13.1)	37,280	(100.0)
Ohio	1,186	(3.6)	31,281	(95.0)	469	(1.4)	32,936	(100.0)
Oregon	1,339	(11.4)	10,331	(88.2)	47	(0.4)	11,717	(100.0)
Pennsylvania	2,210	(6.0)	34,509	(94.0)	12	(0)	36,731	(100.0)
South Carolina	—	—	6,630	(94.6)	—	—	7,005	(100.0)
South Dakota	39	(5.2)	709	(94.8)	0	(0)	748	(100.0)
Tennessee	774	(4.3)	16,968	(94.9)	141	(0.8)	17,883	(100.0)
Texas	30,019	(36.7)	51,473	(62.9)	391	(0.5)	81,883	(100.0)
Utah	901	(24.0)	2,530	(67.4)	322	(8.6)	3,753	(100.0)
Vermont	35	(2.2)	1,565	(97.2)	10	(0.6)	1,610	(100.0)
West Virginia	—	—	2,023	(99.4)	—	—	2,036	(100.0)
Wisconsin	853	(9.1)	8,499	(90.9)	0	(0)	9,352	(100.0)
Wyoming	—	—	—	—	—	—	7	(100.0)
Total**	96,116	(19.4)	385,764	(77.2)	16,988	(3.4)	499,656	(100.0)
Percentage of known values		(20.1)		(79.9)				
Abortion rate^{††}	21.1		14.1				15.1	
Abortion ratio^{§§}	200		224				218	

* Data from 31 reporting areas; excludes three states (California, Louisiana, and New Hampshire) that did not report data and 18 states (Alaska, Connecticut, Florida, Illinois, Iowa, Kentucky, Maryland, Massachusetts, Michigan, Montana, Nebraska, Nevada, North Carolina, North Dakota, Oklahoma, Rhode Island, Virginia, and Washington) for which ethnicity either was not reported or was reported as unknown for >15% of women.

† Percentages for the individual component categories might not add up to 100.0% because of rounding.

§ Cell detail not displayed because of small numbers (N<5).

¶ Numbers do not include private physicians' procedures.

** Small numbers (N<5) that have been removed from individual cells have been subtracted from the total.

†† Calculated as the number of abortions obtained by women in a given ethnic group per 1,000 women in that same group. For each state, abortions for women of unknown ethnicity were distributed according to the distribution of abortions among women of known ethnicity for that state.

§§ Calculated as the number of abortions obtained by women in a given ethnic group per 1,000 live births to women in that same ethnic group. For each state, abortions for women of unknown ethnicity were distributed according to the distribution of abortions among women of known ethnicity for that state.

TABLE 13. Reported abortions, by ethnicity of women who obtained an abortion* — selected states, United States, 1997–2006†

Ethnicity	1997	1998	1999	2000	2001	2002	2003	2004	2005	2006	% change during	
											2005–2006	1997–2006
% of abortions												
Hispanic	17.0	17.6	18.6	18.6	19.3	20.2	20.3	20.3	20.2	21.0	4.0	23.6
Non-Hispanic	83.0	82.4	81.4	81.4	80.7	79.8	79.7	79.7	79.8	79.0	-1.0	-4.8
Abortion rate§												
Hispanic	28.7	29.2	29.1	25.0	24.9	25.0	24.4	23.2	22.2	23.2	4.7	-19.1
Non-Hispanic	16.7	16.6	16.0	15.5	15.4	15.1	15.0	14.7	14.6	15.0	2.5	-10.3
Abortion ratio¶												
Hispanic	292	293	287	261	258	256	246	234	221	223	0.9	-23.5
Non-Hispanic	279	273	263	251	254	250	245	240	237	235	-0.7	-15.6
Total no. abortions	416,870	417,448	406,311	394,234	393,610	388,098	385,579	375,865	370,382	381,098		

* Excludes women for whom ethnicity was reported as unknown.

† Data from 19 reporting areas; by year, these reporting areas represent 46%–48% of the abortions reported by the 46 reporting areas that provided data every year during 1997–2006. Excludes three states (California, Louisiana, and New Hampshire) that did not report data and 30 reporting areas (Alaska, Arizona, Colorado, Connecticut, the District of Columbia, Florida, Georgia, Hawaii, Illinois, Indiana, Iowa, Kentucky, Maine, Maryland, Massachusetts, Michigan, Montana, Nebraska, Nevada, New Mexico, New York [excluding New York City], North Carolina, North Dakota, Oklahoma, Rhode Island, South Dakota, Virginia, Washington, West Virginia, and Wyoming) that did not provide numbers by ethnicity meeting reporting standards for ≥ 1 year.

§ Calculated as the number of abortions obtained by women in a given ethnic group per 1,000 live births to women in that same ethnic group. For each state, abortions for women of unknown ethnicity were distributed according to the distribution of abortions among women of known ethnicity for that state.

¶ Calculated as the number of abortions obtained by women in a given ethnic group per 1,000 women in that same group. For each state, abortions for women of unknown ethnicity were distributed according to the distribution of abortions among women of known ethnicity for that state.

TABLE 14. Reported abortions, by marital status of women who obtained an abortion and state of occurrence — selected states, United States, 2006*

State/Area	Marital status						Total	
	Married		Unmarried		Unknown			
	No.	(%)	No.	(%)	No.	(%)	No.	(%)†
Alabama	1,351	(11.6)	10,234	(87.8)	69	(0.6)	11,654	(100.0)
Alaska	338	(17.6)	1,532	(79.7)	53	(2.8)	1,923	(100.0)
Arizona	1,831	(16.9)	9,005	(83.1)	0	(0)	10,836	(100.0)
Colorado	1,954	(17.7)	8,736	(79.1)	358	(3.2)	11,048	(100.0)
Delaware§	393	(11.4)	2,987	(86.6)	71	(2.1)	3,451	(100.0)
District of Columbia	268	(10.0)	2,412	(89.6)	12	(0.4)	2,692	(100.0)
Georgia	5,197	(17.0)	23,650	(77.4)	1,703	(5.6)	30,550	(100.0)
Hawaii	548	(13.7)	3,431	(86.0)	11	(0.3)	3,990	(100.0)
Idaho	256	(20.5)	993	(79.5)	0	(0)	1,249	(100.0)
Illinois§	6,189	(15.3)	33,473	(82.8)	750	(1.9)	40,412	(100.0)
Indiana	1,705	(16.1)	8,670	(81.7)	239	(2.3)	10,614	(100.0)
Iowa	1,139	(16.9)	5,561	(82.7)	22	(0.3)	6,722	(100.0)
Kansas	— [¶]	—	9,226	(82.6)	—	—	11,173	(100.0)
Kentucky	589	(15.1)	3,323	(84.9)	0	(0)	3,912	(100.0)
Maine	386	(14.5)	2,186	(81.9)	98	(3.7)	2,670	(100.0)
Maryland§	1,460	(17.9)	6,437	(79.1)	242	(3.0)	8,139	(100.0)
Massachusetts	3,344	(13.8)	18,846	(77.7)	2,056	(8.5)	24,246	(100.0)
Michigan	3,224	(12.6)	22,233	(86.7)	179	(0.7)	25,636	(100.0)
Minnesota	2,300	(16.4)	11,639	(82.8)	126	(0.9)	14,065	(100.0)
Mississippi	—	—	2,714	(92.0)	—	—	2,949	(100.0)
Missouri	1,345	(17.8)	6,100	(80.7)	111	(1.5)	7,556	(100.0)
Montana	313	(14.8)	1,561	(73.7)	245	(11.6)	2,119	(100.0)
Nevada	2,252	(19.6)	8,548	(74.5)	671	(5.8)	11,471	(100.0)
New Jersey**	4,200	(13.6)	26,764	(86.4)	22	(0.1)	30,986	(100.0)
New Mexico	876	(14.4)	5,065	(83.2)	146	(2.4)	6,087	(100.0)
New York City	12,753	(14.1)	75,381	(83.6)	2,023	(2.2)	90,157	(100.0)
North Carolina	7,106	(20.3)	26,110	(74.4)	1,872	(5.3)	35,088	(100.0)
North Dakota	176	(13.6)	1,116	(86.0)	6	(0.5)	1,298	(100.0)
Ohio	4,926	(15.0)	26,817	(81.4)	1,193	(3.6)	32,936	(100.0)
Oklahoma	1,473	(20.8)	5,615	(79.2)	0	(0)	7,088	(100.0)
Oregon	2,277	(19.4)	9,060	(77.3)	380	(3.2)	11,717	(100.0)
Pennsylvania	5,370	(14.6)	31,355	(85.4)	6	(0)	36,731	(100.0)
Rhode Island	815	(16.9)	3,839	(79.5)	174	(3.6)	4,828	(100.0)
South Carolina	1,129	(16.1)	5,865	(83.7)	11	(0.2)	7,005	(100.0)
South Dakota	114	(15.2)	634	(84.8)	0	(0)	748	(100.0)
Tennessee	2,776	(15.5)	14,549	(81.4)	558	(3.1)	17,883	(100.0)
Texas	15,053	(18.4)	66,019	(80.6)	811	(1.0)	81,883	(100.0)
Utah	893	(23.8)	2,406	(64.1)	454	(12.1)	3,753	(100.0)
Vermont	277	(17.2)	1,297	(80.6)	36	(2.2)	1,610	(100.0)
Virginia	4,918	(18.0)	19,567	(71.5)	2,864	(10.5)	27,349	(100.0)
West Virginia	358	(17.6)	1,649	(81.0)	29	(1.4)	2,036	(100.0)
Wisconsin§	1,342	(14.3)	7,998	(85.5)	12	(0.1)	9,352	(100.0)
Wyoming	—	—	—	—	—	—	7	(100.0)
Total††	103,214	(16.0)	534,603	(81.3)	17,613	(2.7)	657,619	(100.0)
Percentage of known values		(16.5)		(83.5)				

* Data from 43 reporting areas; excludes three states (California, Louisiana, and New Hampshire) that did not report data and six states (Arkansas, Connecticut, Florida, Nebraska, New York [excluding New York City], and Washington) for which marital status either was not reported or was reported as unknown for >15% of women.

† Percentages for the individual component categories may not add up to 100.0 because of rounding.

§ Includes residents only.

¶ Cell details not displayed because of small numbers (N<5).

** Numbers do not include private physicians' procedures.

†† Small numbers (N<5) that have been removed from individual cells have been subtracted from the total.

TABLE 15. Reported abortions, by number of previous live births and state of occurrence — selected states, United States, 2006*

State/Area	No. of previous live births												Total	
	0		1		2		3		≥4		Unknown			
	No.	(%)	No.	(%)	No.	(%)	No.	(%)	No.	(%)	No.	(%)	No.	(%)†
Alabama	4,608	(39.5)	3,455	(29.6)	2,360	(20.3)	851	(7.3)	363	(3.1)	17	(0.1)	11,654	(100.0)
Alaska	845	(43.9)	457	(23.8)	340	(17.7)	156	(8.1)	109	(5.7)	16	(0.8)	1,923	(100.0)
Arizona	4,959	(45.8)	2,428	(22.4)	1,938	(17.9)	918	(8.5)	574	(5.3)	19	(0.2)	10,836	(100.0)
Arkansas	1,940	(38.9)	1,439	(28.8)	1,035	(20.7)	407	(8.2)	— [§]	—	—	—	4,988	(100.0)
Colorado	5,550	(50.2)	2,383	(21.6)	1,792	(16.2)	765	(6.9)	355	(3.2)	203	(1.8)	11,048	(100.0)
Delaware [¶]	1,396	(40.5)	978	(28.3)	635	(18.4)	285	(8.3)	—	—	—	—	3,451	(100.0)
Georgia	11,841	(38.8)	8,497	(27.8)	6,170	(20.2)	2,568	(8.4)	1,454	(4.8)	20	(0.1)	30,550	(100.0)
Hawaii	1,894	(47.5)	870	(21.8)	649	(16.3)	317	(7.9)	193	(4.8)	67	(1.7)	3,990	(100.0)
Idaho	629	(50.4)	254	(20.3)	195	(15.6)	111	(8.9)	53	(4.2)	7	(0.6)	1,249	(100.0)
Indiana	3,655	(34.4)	2,563	(24.1)	2,010	(18.9)	911	(8.6)	539	(5.1)	936	(8.8)	10,614	(100.0)
Iowa	2,963	(44.1)	1,583	(23.5)	1,282	(19.1)	616	(9.2)	267	(4.0)	11	(0.2)	6,722	(100.0)
Kansas	4,536	(40.6)	2,850	(25.5)	2,308	(20.7)	1,000	(9.0)	479	(4.3)	0	(0)	11,173	(100.0)
Kentucky	1,586	(40.5)	1,095	(28.0)	817	(20.9)	277	(7.1)	137	(3.5)	0	(0)	3,912	(100.0)
Maine	1,462	(54.8)	560	(21.0)	453	(17.0)	144	(5.4)	51	(1.9)	0	(0)	2,670	(100.0)
Maryland ^{¶, **}	2,819	(34.6)	2,458	(30.2)	1,752	(21.5)	757	(9.3)	353	(4.3)	0	(0)	8,139	(100.0)
Michigan	10,344	(40.3)	6,681	(26.1)	5,103	(19.9)	2,249	(8.8)	1,259	(4.9)	0	(0)	25,636	(100.0)
Minnesota	6,032	(42.9)	3,382	(24.0)	2,674	(19.0)	1,247	(8.9)	714	(5.1)	16	(0.1)	14,065	(100.0)
Mississippi	970	(32.9)	988	(33.5)	670	(22.7)	227	(7.7)	—	—	—	—	2,949	(100.0)
Missouri	3,062	(40.5)	2,055	(27.2)	1,427	(18.9)	639	(8.5)	373	(4.9)	0	(0)	7,556	(100.0)
Montana	1,097	(51.8)	449	(21.2)	356	(16.8)	151	(7.1)	66	(3.1)	0	(0)	2,119	(100.0)
Nebraska	1,118	(38.2)	804	(27.5)	595	(20.3)	280	(9.6)	—	—	—	—	2,927	(100.0)
Nevada	4,615	(40.2)	2,776	(24.2)	2,185	(19.0)	1,052	(9.2)	611	(5.3)	232	(2.0)	11,471	(100.0)
New Jersey ^{††}	12,879	(41.6)	8,288	(26.7)	5,679	(18.3)	2,460	(7.9)	1,669	(5.4)	11	(0)	30,986	(100.0)
New York	54,689	(42.9)	32,034	(25.1)	23,007	(18.1)	9,730	(7.6)	5,695	(4.5)	2,282	(1.8)	127,437	(100.0)
City	35,520	(39.4)	24,111	(26.7)	17,059	(18.9)	7,166	(7.9)	4,019	(4.5)	2,282	(2.5)	90,157	(100.0)
State	19,169	(51.4)	7,923	(21.3)	5,948	(16.0)	2,564	(6.9)	1,676	(4.5)	0	(0)	37,280	(100.0)
North Dakota	534	(41.1)	364	(28.0)	227	(17.5)	112	(8.6)	61	(4.7)	0	(0)	1,298	(100.0)
Ohio	11,488	(34.9)	9,040	(27.4)	6,740	(20.5)	2,768	(8.4)	1,381	(4.2)	1,519	(4.6)	32,936	(100.0)
Oklahoma ^{**}	2,681	(37.8)	1,950	(27.5)	1,571	(22.2)	622	(8.8)	264	(3.7)	0	(0)	7,088	(100.0)
Oregon	5,503	(46.9)	2,793	(23.8)	2,103	(17.9)	854	(7.3)	420	(3.6)	59	(0.5)	11,732	(100.0)
Pennsylvania	15,205	(41.4)	9,877	(26.9)	7,049	(19.2)	2,984	(8.1)	1,616	(4.4)	0	(0)	36,731	(100.0)
Rhode Island ^{**}	2,003	(41.5)	1,331	(27.6)	829	(17.2)	345	(7.1)	166	(3.4)	154	(3.2)	4,828	(100.0)
South Carolina	3,102	(44.3)	1,950	(27.8)	1,336	(19.1)	447	(6.4)	—	—	—	—	7,005	(100.0)
South Dakota ^{**}	334	(44.7)	180	(24.1)	141	(18.9)	66	(8.8)	27	(3.6)	0	(0)	748	(100.0)
Tennessee	6,013	(33.6)	5,163	(28.9)	3,828	(21.4)	1,616	(9.0)	964	(5.4)	299	(1.7)	17,883	(100.0)
Texas	31,466	(38.4)	22,088	(27.0)	17,235	(21.0)	7,395	(9.0)	3,650	(4.5)	49	(0.1)	81,883	(100.0)
Utah	1,543	(41.1)	887	(23.6)	707	(18.8)	359	(9.6)	200	(5.3)	57	(1.5)	3,753	(100.0)
Vermont	889	(55.2)	352	(21.9)	242	(15.0)	91	(5.7)	29	(1.8)	7	(0.4)	1,610	(100.0)
Virginia	10,943	(40.0)	7,586	(27.7)	5,624	(20.6)	2,174	(7.9)	933	(3.4)	89	(0.3)	27,349	(100.0)
Washington	11,580	(47.0)	5,920	(24.0)	4,397	(17.9)	1,803	(7.3)	913	(3.7)	14	(0.1)	24,627	(100.0)
West Virginia	712	(35.0)	650	(31.9)	468	(23.0)	149	(7.3)	—	—	—	—	2,036	(100.0)
Wyoming	—	—	—	—	—	—	—	—	—	—	—	—	7	(100.0)
Total^{§§}	249,485	(40.9)	159,458	(26.2)	117,929	(19.3)	49,903	(8.2)	25,938	(4.4)	6,084	(1.0)	609,579	(100.0)
Percentage of known values		(41.3)		(26.4)		(19.5)		(8.3)		(4.4)				

* Data from 41 reporting areas; excludes three states (California, Louisiana, and New Hampshire) that did not report data and eight states/areas (Connecticut, the District of Columbia, Florida, Illinois, Massachusetts, New Mexico, North Carolina, and Wisconsin) for which the number of previous live births either was not reported or was reported as unknown for >15% of women.

† Percentages for the individual component categories might not add up to 100.0% because of rounding.

§ Cell detail not displayed because of small numbers (N<5).

¶ Includes residents only.

** Includes living children only.

†† Numbers do not include private physicians' procedures.

§§ Small numbers (N<5) that have been removed from individual cells have been subtracted from the total.

TABLE 16. Reported abortions, by number of previous abortions and state of occurrence — selected states, United States, 2006*

State/Area	No. of previous induced abortions										Total	
	0		1		2		≥3		Unknown			
	No.	(%)	No.	(%)	No.	(%)	No.	(%)	No.	(%)	No.	(%)†
Alabama	7,606	(65.3)	2,796	(24.0)	898	(7.7)	334	(2.9)	20	(0.2)	11,654	(100.0)
Alaska	1,146	(59.6)	466	(24.2)	184	(9.6)	100	(5.2)	27	(1.4)	1,923	(100.0)
Arizona	6,614	(61.0)	2,892	(26.7)	898	(8.3)	417	(3.8)	15	(0.1)	10,836	(100.0)
Arkansas	3,115	(62.4)	1,140	(22.9)	459	(9.2)	— [§]	—	—	—	4,988	(100.0)
Colorado	7,067	(64.0)	2,687	(24.3)	789	(7.1)	361	(3.3)	144	(1.3)	11,048	(100.0)
Delaware [¶]	2,048	(59.3)	852	(24.7)	345	(10.0)	—	—	—	—	3,451	(100.0)
Georgia	18,464	(60.4)	7,731	(25.3)	2,851	(9.3)	1,457	(4.8)	47	(0.2)	30,550	(100.0)
Hawaii	2,028	(50.8)	976	(24.5)	432	(10.8)	322	(8.1)	232	(5.8)	3,990	(100.0)
Idaho	976	(78.1)	199	(15.9)	48	(3.8)	19	(1.5)	7	(0.6)	1,249	(100.0)
Indiana	5,986	(56.4)	2,493	(23.5)	926	(8.7)	436	(4.1)	773	(7.3)	10,614	(100.0)
Iowa	4,372	(65.0)	1,548	(23.0)	525	(7.8)	271	(4.0)	6	(0.1)	6,722	(100.0)
Kansas	6,897	(61.7)	2,700	(24.2)	1,015	(9.1)	561	(5.0)	0	(0)	11,173	(100.0)
Kentucky	2,300	(58.8)	992	(25.4)	358	(9.2)	262	(6.7)	0	(0)	3,912	(100.0)
Maine	1,756	(65.8)	627	(23.5)	207	(7.8)	80	(3.0)	0	(0)	2,670	(100.0)
Maryland [¶]	1,754	(21.6)	2,783	(34.2)	1,828	(22.5)	1,774	(21.8)	0	(0)	8,139	(100.0)
Massachusetts	11,671	(48.1)	6,119	(25.2)	3,017	(12.4)	2,204	(9.1)	1,235	(5.1)	24,246	(100.0)
Michigan	13,192	(51.5)	6,692	(26.1)	3,120	(12.2)	2,632	(10.3)	0	(0)	25,636	(100.0)
Minnesota	8,224	(58.5)	3,342	(23.8)	1,405	(10.0)	1,094	(7.8)	0	(0)	14,065	(100.0)
Mississippi	1,854	(62.9)	806	(27.3)	228	(7.7)	—	—	—	—	2,949	(100.0)
Missouri	4,365	(57.8)	1,921	(25.4)	780	(10.3)	—	—	—	—	7,556	(100.0)
Montana	683	(32.2)	840	(39.6)	359	(16.9)	237	(11.2)	0	(0)	2,119	(100.0)
Nebraska	1,869	(63.9)	696	(23.8)	240	(8.2)	122	(4.2)	0	(0)	2,927	(100.0)
Nevada	5,813	(50.7)	3,219	(28.1)	1,261	(11.0)	860	(7.5)	318	(2.8)	11,471	(100.0)
New Jersey**	20,472	(66.1)	5,402	(17.4)	2,790	(9.0)	2,301	(7.4)	21	(0.1)	30,986	(100.0)
New York	57,523	(45.1)	30,310	(23.8)	17,328	(13.6)	16,095	(12.6)	6,181	(4.9)	127,437	(100.0)
City	38,341	(42.5)	22,341	(24.8)	13,412	(14.9)	12,891	(14.3)	3,172	(3.5)	90,157	(100.0)
State	19,182	(51.5)	7,969	(21.4)	3,916	(10.5)	3,204	(8.6)	3,009	(8.1)	37,280	(100.0)
North Dakota	893	(68.8)	268	(20.6)	87	(6.7)	50	(3.9)	0	(0)	1,298	(100.0)
Ohio	15,840	(48.1)	8,474	(25.7)	3,523	(10.7)	2,145	(6.5)	2,954	(9.0)	32,936	(100.0)
Oklahoma	4,496	(63.4)	1,796	(25.3)	507	(7.2)	289	(4.1)	0	(0)	7,088	(100.0)
Oregon	6,579	(56.1)	2,971	(25.3)	1,220	(10.4)	910	(7.8)	52	(0.4)	11,732	(100.0)
Pennsylvania	20,294	(55.3)	9,596	(26.1)	4,102	(11.2)	2,739	(7.5)	0	(0)	36,731	(100.0)
Rhode Island	2,475	(51.3)	1,326	(27.5)	542	(11.2)	317	(6.6)	168	(3.5)	4,828	(100.0)
South Carolina	3,992	(57.0)	1,784	(25.5)	729	(10.4)	—	—	—	—	7,005	(100.0)
South Dakota	527	(70.5)	161	(21.5)	40	(5.3)	20	(2.7)	0	(0)	748	(100.0)
Tennessee	9,340	(52.2)	4,646	(26.0)	2,101	(11.7)	1,504	(8.4)	292	(1.6)	17,883	(100.0)
Texas	47,524	(58.0)	21,871	(26.7)	8,058	(9.8)	4,355	(5.3)	75	(0.1)	81,883	(100.0)
Utah	2,493	(66.4)	795	(21.2)	248	(6.6)	217	(5.8)	0	(0)	3,753	(100.0)
Vermont	958	(59.5)	393	(24.4)	155	(9.6)	97	(6.0)	7	(0.4)	1,610	(100.0)
Virginia	15,412	(56.4)	7,355	(26.9)	2,938	(10.7)	1,578	(5.8)	66	(0.2)	27,349	(100.0)
Washington	13,135	(53.3)	6,423	(26.1)	2,880	(11.7)	2,165	(8.8)	24	(0.1)	24,627	(100.0)
West Virginia	1,211	(59.5)	540	(26.5)	185	(9.1)	—	—	—	—	2,036	(100.0)
Total††	342,964	(54.1)	158,628	(25.0)	69,606	(11.0)	48,325	(7.9)	12,664	(2.0)	633,818	(100.0)
Percentage of known values		(55.2)		(25.5)		(11.2)		(8.0)				

* Data from 41 reporting areas; excludes three states (California, Louisiana, and New Hampshire) that did not report data and eight states/areas (Connecticut, the District of Columbia, Florida, Illinois, New Mexico, North Carolina, Wisconsin, and Wyoming) for which the number of previous induced abortions either was not reported or was reported as unknown for >15% of women.

† Percentages for the individual component categories might not add up to 100.0% because of rounding.

§ Cell detail not displayed because of small numbers (N<5).

¶ Includes residents only.

** Numbers do not include private physicians' procedures.

†† Small numbers (N<5) that have been removed from individual cells have been subtracted from the total.

TABLE 17. Reported abortions, by known race, age group, and marital status of women who obtained an abortion — selected states, United States, 2006

Characteristic	Race						Total	
	White		Black		Other			
	No.	(%)	No.	(%)	No.	(%)	No.	(%)*
Age group (yrs)								
<15	1,318	(0.4)	1,549	(0.7)	148	(0.4)	3,015	(0.5)
15–19	53,047	(16.5)	35,068	(16.6)	5,646	(13.4)	93,761	(16.3)
20–24	108,387	(33.8)	68,195	(32.2)	12,193	(29.0)	188,775	(32.8)
25–29	74,533	(23.2)	54,528	(25.8)	10,080	(24.0)	139,141	(24.2)
30–34	43,398	(13.5)	31,229	(14.8)	7,274	(17.3)	81,901	(14.2)
35–39	29,393	(9.2)	16,365	(7.7)	4,740	(11.3)	50,498	(8.8)
≥40	11,065	(3.4)	4,744	(2.2)	1,979	(4.7)	17,788	(3.1)
Total†	321,141	(100.0)	211,678	(100.0)	42,060	(100.0)	574,879	(100.0)
Marital status								
Married	52,213	(17.9)	20,444	(10.6)	12,435	(31.9)	85,092	(16.3)
Unmarried	239,433	(82.1)	172,428	(89.4)	26,534	(68.1)	438,395	(83.7)
Total§	291,646	(100.0)	192,872	(100.0)	38,969	(100.0)	523,487	(100.0)

* The sum of percentages by age and by marital status might not add up to 100.0% because of rounding.

† Data from 36 reporting areas; excludes three states (California, Louisiana, and New Hampshire) that did not report data and 13 states/areas (Arizona, Connecticut, the District of Columbia, Florida, Illinois, Massachusetts, Nebraska, Nevada, New Mexico, Rhode Island, Utah, Washington, and Wyoming) for which race by age either was not reported or was reported as unknown for >15% of women.

§ Data from 33 reporting areas; excludes three states (California, Louisiana, and New Hampshire) that did not report data and 16 states/areas (Arizona, Arkansas, Connecticut, the District of Columbia, Florida, Illinois, Maryland, Massachusetts, Nebraska, Nevada, New Mexico, New York [excluding New York City], Rhode Island, Utah, Washington, and Wyoming) for which race by marital status either was not reported or was reported as unknown for >15% of women.

TABLE 18. Reported abortions, by known ethnicity, age group, and marital status of women who obtained an abortion — selected states, United States, 2006

Characteristic	Ethnicity				Total	
	Hispanic		Non-Hispanic			
	No.	(%)	No.	(%)	No.	(%)*
Age groups (yrs)						
<15	490	(0.5)	2,051	(0.5)	2,541	(0.5)
15–19	15,207	(15.8)	63,079	(16.6)	78,286	(16.4)
20–24	31,824	(33.1)	123,871	(32.5)	155,695	(32.7)
25–29	24,631	(25.6)	90,860	(23.9)	115,491	(24.2)
30–34	13,990	(14.6)	53,871	(14.2)	67,861	(14.2)
35–39	7,373	(7.7)	34,444	(9.0)	41,817	(8.8)
≥40	2,582	(2.7)	12,442	(3.3)	15,024	(3.2)
Total†	96,097	(100.0)	380,618	(100.0)	476,715	(100.0)
Marital status						
Married	15,436	(17.1)	54,372	(15.8)	69,808	(16.0)
Unmarried	74,651	(82.9)	290,701	(84.2)	365,352	(84.0)
Total§	90,087	(100.0)	345,073	(100.0)	435,160	(100.0)

* The sum of percentages by age and by marital status might not add up to 100.0% because of rounding.

† Data from 30 reporting areas; excludes three states (California, Louisiana, New Hampshire) that did not report data and 19 states/areas (Alaska, Connecticut, the District of Columbia, Florida, Illinois, Iowa, Kentucky, Maryland, Massachusetts, Michigan, Montana, Nebraska, Nevada, North Carolina, North Dakota, Oklahoma, Rhode Island, Virginia, and Washington) for which ethnicity by age either was not reported or was reported as unknown for >15% of women.

§ Data from 24 reporting areas; excludes three states (California, Louisiana, and New Hampshire) that did not report data and 25 states/areas (Alaska, Arkansas, Connecticut, District of Columbia, Florida, Georgia, Illinois, Indiana, Iowa, Kentucky, Maine, Maryland, Massachusetts, Michigan, Montana, Nebraska, Nevada, New York [excluding New York City], North Carolina, North Dakota, Oklahoma, Rhode Island, Utah, Virginia, and Washington) for which ethnicity by marital status either was not reported or was reported as unknown for >15% of women.

TABLE 19. Reported abortions, by known week of gestation, age group, race, and ethnicity of women who obtained an abortion — selected states, United States, 2006

Characteristic	Weeks												Total	
	≤8		9–10		11–12		13–15		16–20		≥21			
	No.	(%)	No.	(%)	No.	(%)	No.	(%)	No.	(%)	No.	(%)	No.	(%)*
Age group (yrs)														
<15	1,376	(42.2)	608	(18.7)	469	(14.4)	361	(11.1)	302	(9.3)	142	(4.4)	3,258	(0.5)
15–19	53,520	(51.9)	20,099	(19.5)	12,583	(12.2)	9,081	(8.8)	5,709	(5.5)	2,151	(2.1)	103,143	(16.4)
20–24	124,589	(60.5)	36,493	(17.7)	20,495	(10.0)	14,159	(6.9)	7,697	(3.7)	2,546	(1.2)	205,979	(32.8)
25–29	98,291	(65.0)	25,245	(16.7)	12,940	(8.6)	8,657	(5.7)	4,592	(3.0)	1,539	(1.0)	151,264	(24.1)
30–34	60,099	(67.5)	14,084	(15.8)	6,753	(7.6)	4,480	(5.0)	2,623	(2.9)	1,012	(1.1)	89,051	(14.2)
35–39	37,490	(67.9)	8,418	(15.3)	3,985	(7.2)	2,784	(5.0)	1,814	(3.3)	698	(1.3)	55,189	(8.8)
≥40	13,655	(69.3)	2,781	(14.1)	1,336	(6.8)	919	(4.7)	741	(3.8)	259	(1.3)	19,691	(3.1)
Total†	389,020	(62.0)	107,728	(17.2)	58,561	(9.3)	40,441	(6.4)	23,478	(3.7)	8,347	(1.3)	627,575	(100.0)
Race														
White	201,085	(65.1)	50,183	(16.2)	26,374	(8.5)	17,944	(5.8)	9,706	(3.1)	3,781	(1.2)	309,073	(56.2)
Black	113,577	(56.9)	37,790	(18.9)	21,760	(10.9)	15,111	(7.6)	8,627	(4.3)	2,792	(1.4)	199,657	(36.3)
Other	27,430	(67.1)	5,984	(14.6)	2,843	(7.0)	2,449	(6.0)	1,612	(3.9)	561	(1.4)	40,879	(7.4)
Total§	342,092	(62.2)	93,957	(17.1)	50,977	(9.3)	35,504	(6.5)	19,945	(3.6)	7,134	(1.3)	549,609	(100.0)
Ethnicity														
Hispanic	60,725	(64.1)	15,098	(15.9)	7,515	(7.9)	6,563	(6.9)	3,484	(3.7)	1,404	(1.5)	94,789	(20.5)
Non-Hispanic	224,973	(61.3)	63,919	(17.4)	34,756	(9.5)	23,720	(6.5)	14,304	(3.9)	5,613	(1.5)	367,285	(79.5)
Total¶	285,698	(61.8)	79,017	(17.1)	42,271	(9.1)	30,283	(6.6)	17,788	(3.8)	7,017	(1.5)	462,074	(100.0)

* The sum of percentages by age, race and ethnicity might not add up to 100.0% because of rounding.

† Data from 39 reporting areas; excludes three states (California, Louisiana, and New Hampshire) that did not report data and 10 states/areas (Connecticut, the District of Columbia, Florida, Illinois, Maryland, Massachusetts, Mississippi, Nebraska, Nevada and North Carolina) for which gestational age by age group either was not reported or was reported as unknown for >15% of women.

§ Data from 30 reporting areas; excludes three states (California, Louisiana, and New Hampshire) that did not report data and 19 states/areas (Arizona, Connecticut, the District of Columbia, Florida, Illinois, Indiana, Maryland, Massachusetts, Mississippi, Nebraska, Nevada, New Mexico, New York [excluding New York City], North Carolina, Rhode Island, Utah, Washington, Wisconsin and Wyoming) for which gestational age by race either was not reported or was reported as unknown for >15% of women.

¶ Data from 26 reporting areas; excludes three states (California, Louisiana, and New Hampshire) that did not report data and 23 states/areas (Alaska, Connecticut, the District of Columbia, Florida, Illinois, Indiana, Iowa, Kentucky, Maryland, Massachusetts, Michigan, Mississippi, Montana, Nebraska, Nevada, New York [excluding New York City], North Carolina, North Dakota, Oklahoma, Rhode Island, Virginia, Washington, and Wisconsin) for which gestational age by ethnicity either was not reported or was reported as unknown for >15% of women.

TABLE 20. Reported abortions obtained at ≤8 weeks of gestation, by known week of gestation, age group, race, and ethnicity of women who obtained an abortion — selected states, United States, 2006

Characteristic	Weeks						Total	
	≤6		7		8			
	No.	(%)	No.	(%)	No.	(%)	No.	(%)*
Age group (yrs)								
<15	560	(17.4)	391	(12.2)	404	(12.6)	1,355	(42.2)
15–19	22,630	(22.3)	15,912	(15.7)	14,306	(14.1)	52,848	(52.1)
20–24	57,682	(28.4)	36,081	(17.8)	29,264	(14.4)	123,027	(60.7)
25–29	47,136	(31.6)	28,465	(19.1)	21,491	(14.4)	97,092	(65.1)
30–34	29,522	(33.6)	17,295	(19.7)	12,533	(14.3)	59,350	(67.6)
35–39	18,459	(33.9)	10,652	(19.6)	7,920	(14.6)	37,031	(68.0)
≥40	6,948	(35.8)	3,807	(19.6)	2,726	(14.1)	13,481	(69.5)
Total†	182,937	(29.6)	112,603	(18.2)	88,644	(14.3)	384,184	(62.1)
Race								
White	101,771	(32.9)	56,017	(18.1)	43,297	(14.0)	201,085	(65.1)
Black	48,151	(24.1)	35,812	(17.9)	29,614	(14.8)	113,577	(56.9)
Other	14,109	(34.5)	7,651	(18.7)	5,670	(13.9)	27,430	(67.1)
Total§	164,031	(29.8)	99,480	(18.1)	78,581	(14.3)	342,092	(62.2)
Ethnicity								
Hispanic	31,574	(33.3)	16,314	(17.2)	12,837	(13.5)	60,725	(64.1)
Non-Hispanic	105,411	(28.7)	66,501	(18.1)	53,061	(14.4)	224,973	(61.3)
Total¶	136,985	(29.6)	82,815	(17.9)	65,898	(14.3)	285,698	(61.8)

* Percentages were calculated using the total number of abortions obtained at all known weeks of gestation. Percentages might not add to the percentage obtained at ≤8 weeks of gestation as shown in Table 19 because fewer states are included in certain variables and because of rounding.

† Data from 38 reporting areas; excludes three states (California, Louisiana, and New Hampshire) that did not report data and 11 states/areas (Connecticut, the District of Columbia, Florida, Illinois, Maryland, Massachusetts, Mississippi, Nebraska, Nevada, North Carolina, and Wisconsin) for which gestational age by age group either was not reported or was reported as unknown for >15% of women.

§ Data from 30 reporting areas; excludes three states (California, Louisiana, and New Hampshire) that did not report data and 19 states/areas (Arizona, Connecticut, the District of Columbia, Florida, Illinois, Indiana, Maryland, Massachusetts, Mississippi, Nebraska, Nevada, New Mexico, New York [excluding New York City], North Carolina, Rhode Island, Utah, Washington, Wisconsin, and Wyoming) for which gestational age by race either was not reported or was reported as unknown for >15% of women.

¶ Data from 26 reporting areas; excludes three states (California, Louisiana, and New Hampshire) that did not report data and 23 states/areas (Alaska, Connecticut, the District of Columbia, Florida, Illinois, Indiana, Iowa, Kentucky, Maryland, Massachusetts, Michigan, Mississippi, Montana, Nebraska, Nevada, New York [excluding New York City], North Carolina, North Dakota, Oklahoma, Rhode Island, Virginia, Washington, and Wisconsin) for which gestational age by ethnicity either was not reported or was reported as unknown for >15% of women.

TABLE 21. Reported abortions, by known week of gestation and type of procedures — selected states, United States, 2006*

Type of procedure	Weeks												Total	
	≤8		9–10		11–12		13–15		16–20		≥21			
	No.	(%)	No.	(%)	No.	(%)	No.	(%)	No.	(%)	No.	(%)	No.	(%)†
Curettage§	316,019	(82.6)	103,520	(98.0)	56,920	(99.4)	39,069	(99.4)	21,768	(96.5)	6,945	(85.9)	544,241	(88.5)
Intrauterine instillation	286	(0.1)	97	(0.1)	63	(0.1)	69	(0.2)	167	(0.8)	86	(1.1)	768	(0.1)
Medical¶	60,758	(15.9)	1,886	(1.8)	222	(0.4)	127	(0.3)	405	(1.8)	380	(4.7)	63,778	(10.4)
Other**	5,377	(1.4)	138	(0.1)	64	(0.1)	46	(0.1)	221	(1.0)	676	(8.4)	6,522	(1.1)
Total	382,440	(100.0)	105,641	(100.0)	57,269	(100.0)	39,311	(100.0)	22,561	(100.0)	8,087	(100.0)	615,309	(100.0)

* Data from 39 reporting areas; excludes three states (California, Louisiana, and New Hampshire) that did not report data and 10 states/areas (Connecticut, the District of Columbia, Florida, Illinois, Kentucky, Maryland, Massachusetts, Mississippi, Nebraska, and Wisconsin) for which gestational age by procedure type either was not reported or was reported as unknown for >15% of women.

† The sum of percentages by procedure type might not add up to 100.0% because of rounding.

§ Includes vacuum aspiration, sharp curettage, and dilation and evacuation procedures.

¶ Medical (nonsurgical) procedures differed by weeks of gestation (i.e., mifepristone and misoprostol or methotrexate and misoprostol were reported for abortions performed at ≤8 weeks gestation; vaginal prostaglandins were primarily reported for abortions performed at later weeks of gestation).

** Includes hysterotomy/hysterectomy and procedures reported as "other."

TABLE 22. Number of deaths and case-fatality rates* for abortion-related deaths reported to CDC, by type of abortion — United States, 1972–2005†

Year	Type of abortion induced			Total	Case-fatality rate
	Legal§	Illegal¶	Unknown**		
1972	24	39	2	65	4.1
1973	25	19	3	47	4.1
1974	26	6	1	33	3.4
1975	29	4	1	34	3.4
1976	11	2	1	14	1.1
1977	17	4	0	21	1.6
1978	9	7	0	16	0.8
1979	22	0	0	22	1.8
1980	9	1	2	12	0.7
1981	8	1	0	9	0.6
1982	11	1	0	12	0.8
1983	11	1	0	12	0.9
1984	12	0	0	12	0.9
1985	11	1	1	13	0.8
1986	11	0	2	13	0.8
1987	7	2	0	9	0.5
1988	16	0	0	16	1.2
1989	12	1	0	13	0.9
1990	9	0	0	9	0.6
1991	11	1	0	12	0.8
1992	10	0	0	10	0.7
1993	6	1	2	9	0.5
1994	10	2	0	12	0.8
1995	4	0	0	4	0.3
1996	9	0	0	9	0.7
1997	7	0	0	7	0.6
1998	10	0	0	10	—††
1999	4	0	0	4	—
2000	11	0	0	11	—
2001	6	1	0	7	—
2002	9	0	0	9	—
2003	10	0	0	10	—
2004	7	1	0	8	—
2005	7	0	0	7	—
Total	400	95	15	511	1.1§§

* Number of abortion-related deaths per 100,000 reported legal induced abortions.

† Certain numbers might differ from those in reports published previously because additional information has been supplied to CDC subsequent to publication.

§ An abortion is defined as “legal” if it was performed by a licensed physician or an appropriately licensed advanced practice clinician acting under the supervision of a licensed physician.

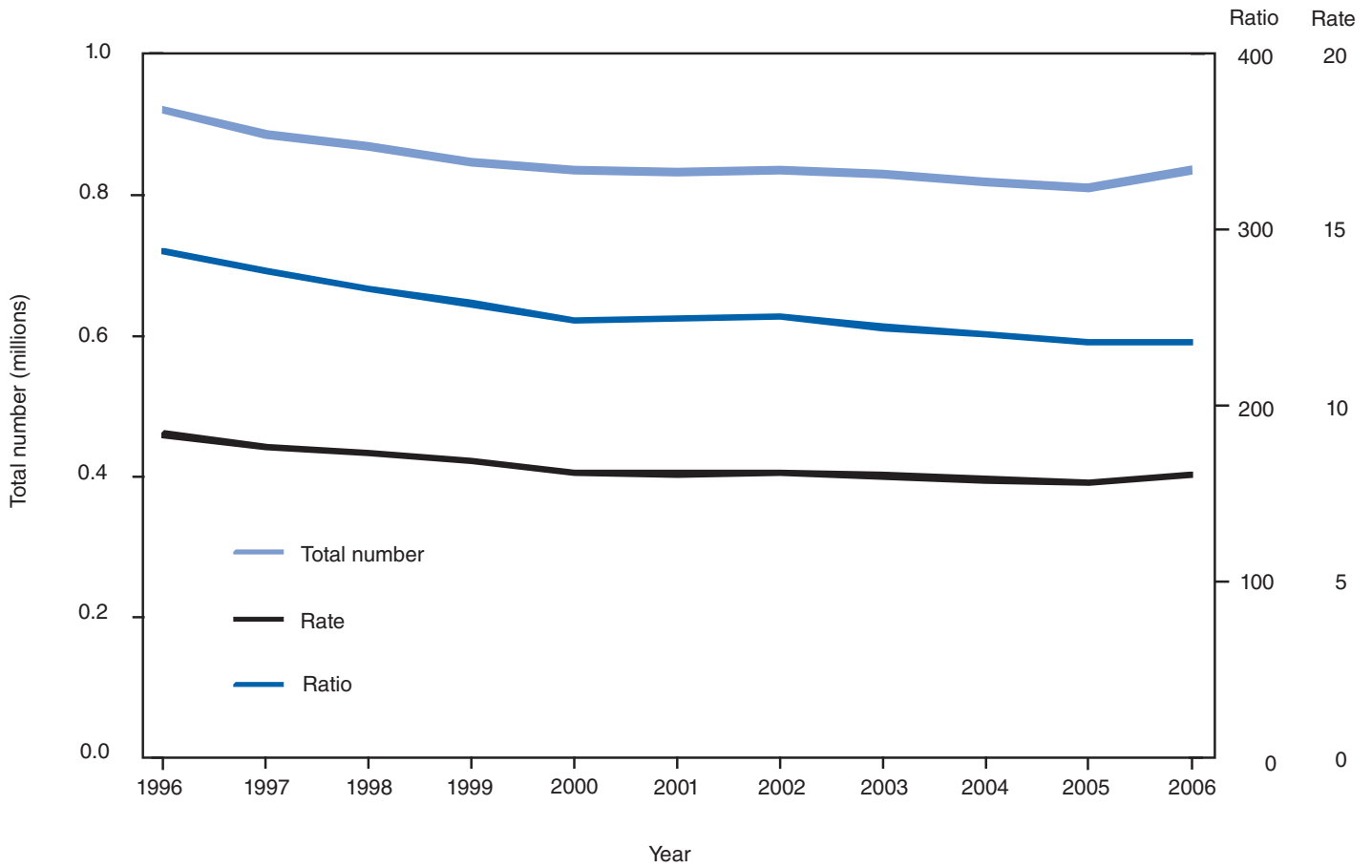
¶ An abortion is defined as “illegal” if it was performed by any person other than a licensed physician or an appropriately licensed advanced practice clinician acting under the supervision of a licensed physician.

** Unknown whether induced or spontaneous abortions.

†† Case-fatality rates for 1998–2005 cannot be calculated because a substantial number of abortions occurred in nonreporting states, and the denominator (i.e., the total number of abortions) is unknown.

§§ Case-fatality rate computed for 1972–1997 only.

FIGURE 1. Number, rate,* and ratio† of abortions performed, by year — selected states, United States, 1996–2006§

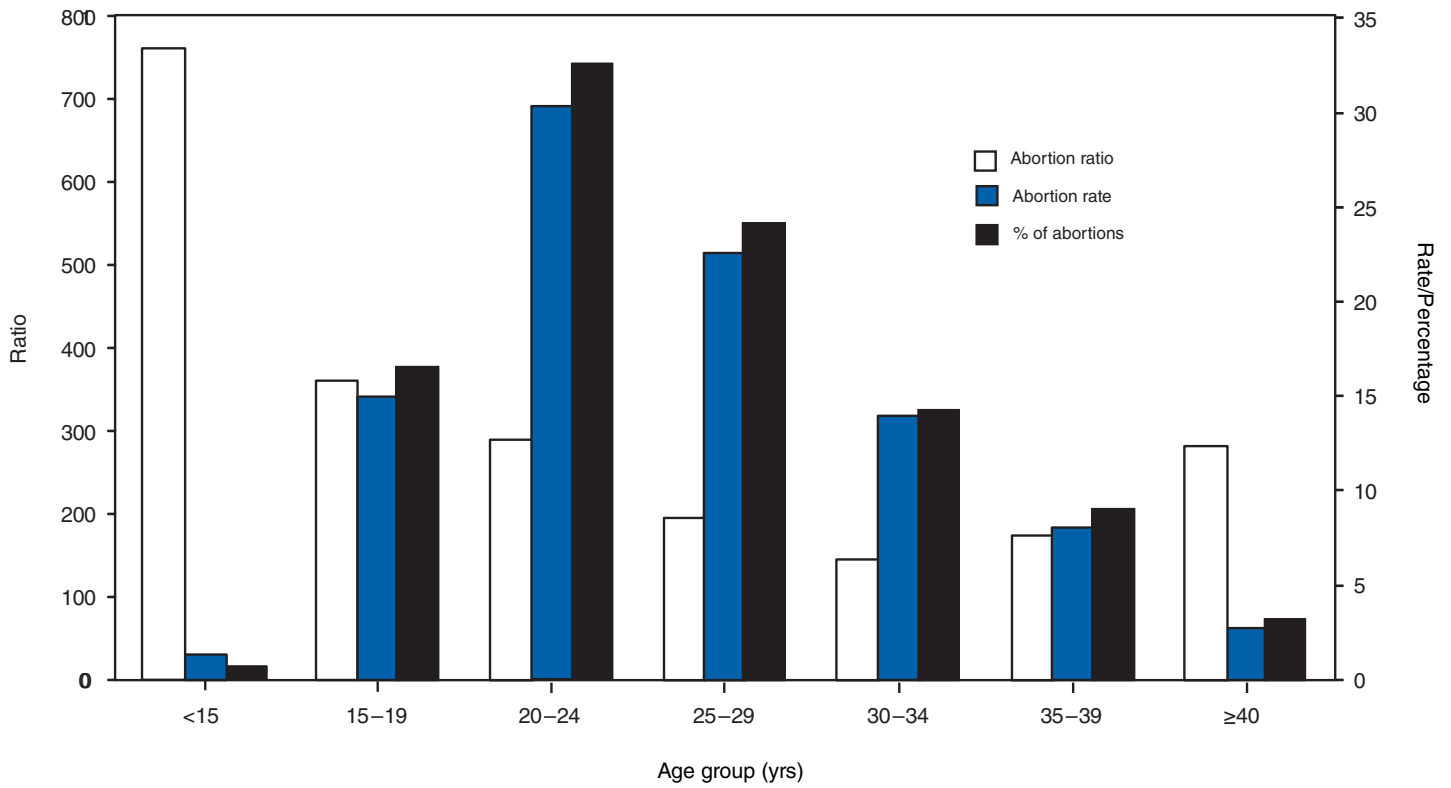


*Number of abortions per 1,000 women aged 15–44 years.

†Number of abortions per 1,000 live births.

§Data from 46 reporting areas; excludes Alaska, California, Louisiana, New Hampshire, Oklahoma, and West Virginia.

FIGURE 2. Abortion rate,* ratio,† and percentage of total abortions, by age group of women who obtained an abortion — selected states, United States, 2006§

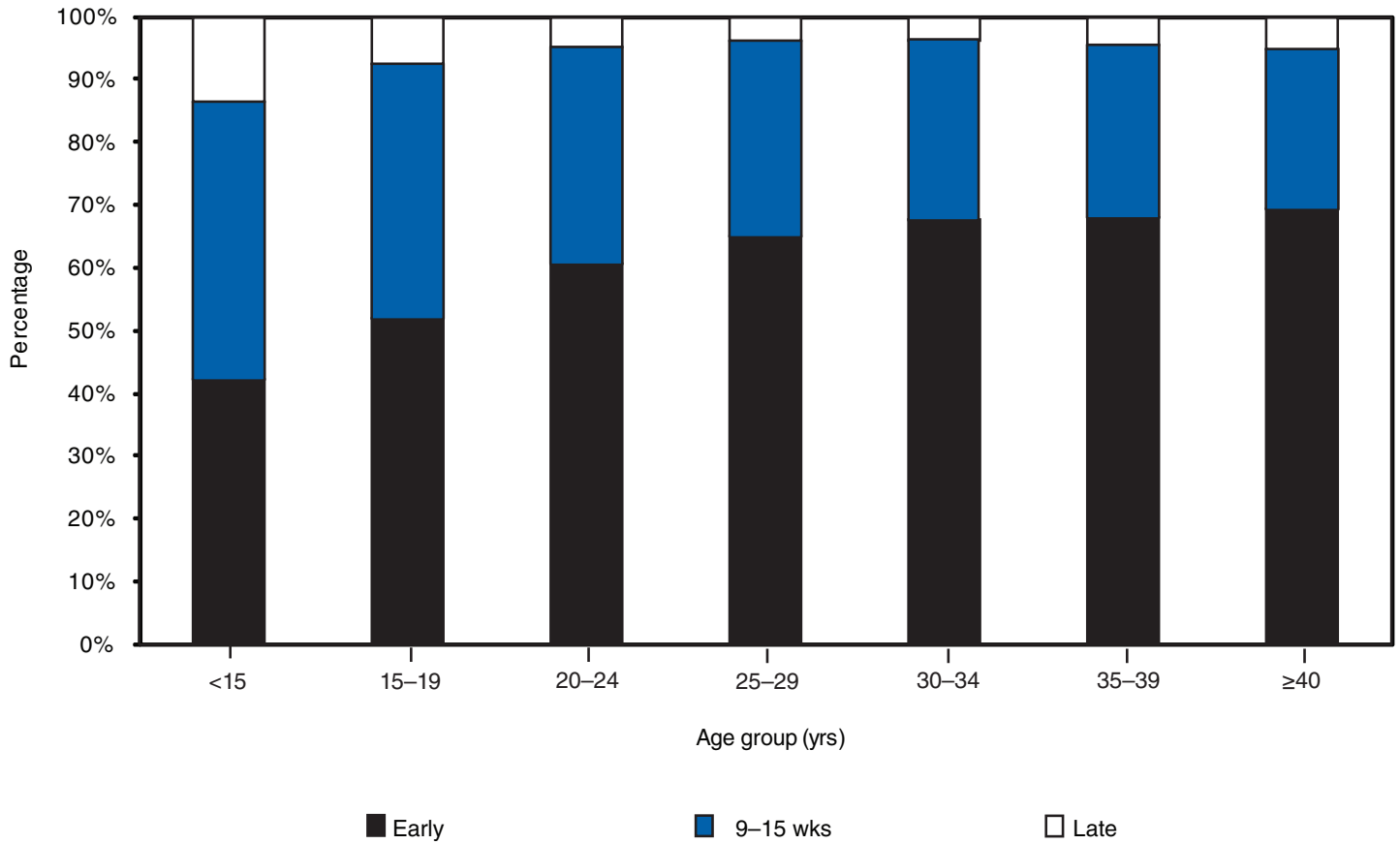


*Number of abortions per 1,000 women aged 15-44 years.

†Number of abortions per 1,000 live births.

§Data from 48 reporting areas; excludes California, Florida, Louisiana, and New Hampshire.

FIGURE 3. Percentage* of women who obtained early† or late§ abortions, by age group — selected states, United States, 2006¶



* Based on total known weeks of gestation.

† ≤8 weeks' gestation.

§ ≥16 weeks' gestation.

¶ Data from 39 reporting areas; excludes three states (California, Louisiana, and New Hampshire) that did not report data and 10 states/areas (Connecticut, the District of Columbia, Florida, Illinois, Maryland, Massachusetts, Mississippi, Nebraska, Nevada, and North Carolina) for which gestational age by age group either was not reported or was reported as unknown for >15% of women.

The *Morbidity and Mortality Weekly Report (MMWR)* Series is prepared by the Centers for Disease Control and Prevention (CDC) and is available free of charge in electronic format. To receive an electronic copy each week, visit *MMWR*'s free subscription page at <http://www.cdc.gov/mmwr/mmwrsubscribe.html>. Paper copy subscriptions are available through the Superintendent of Documents, U.S. Government Printing Office, Washington, DC 20402; telephone 202-512-1800.

Data presented by the Notifiable Disease Data Team and 122 Cities Mortality Data Team in the weekly *MMWR* are provisional, based on weekly reports to CDC by state health departments. Address all inquiries about the *MMWR* Series, including material to be considered for publication, to Editor, *MMWR* Series, Mailstop E-90, CDC, 1600 Clifton Rd., N.E., Atlanta, GA 30333 or to mmwrq@cdc.gov.

All material in the *MMWR* Series is in the public domain and may be used and reprinted without permission; citation as to source, however, is appreciated.

Use of trade names and commercial sources is for identification only and does not imply endorsement by the U.S. Department of Health and Human Services.

References to non-CDC sites on the Internet are provided as a service to *MMWR* readers and do not constitute or imply endorsement of these organizations or their programs by CDC or the U.S. Department of Health and Human Services. CDC is not responsible for the content of these sites. URL addresses listed in *MMWR* were current as of the date of publication.