

Please note: An erratum has been published for this issue. To view the erratum, please click [here](#).

Centers for Disease Control and Prevention
MMWR

Morbidity and Mortality Weekly Report

Surveillance Summaries / Vol. 62 / No. 8

November 29, 2013

Abortion Surveillance — United States, 2010



U.S. Department of Health and Human Services
Centers for Disease Control and Prevention

CONTENTS

Introduction	2
Methods.....	2
Results	5
Discussion	9
References.....	12

The *MMWR* series of publications is published by the Center for Surveillance, Epidemiology, and Laboratory Services, Centers for Disease Control and Prevention (CDC), U.S. Department of Health and Human Services, Atlanta, GA 30333.

Suggested citation: Centers for Disease Control and Prevention. [Article title]. *MMWR* 2013;62:[inclusive page numbers].

Centers for Disease Control and Prevention

Thomas R. Frieden, MD, MPH, *Director*
 Harold W. Jaffe, MD, MA, *Associate Director for Science*
 Joanne Cono, MD, ScM, *Acting Director, Office of Science Quality*
 Chesley L. Richards, MD, MPH, *Deputy Director for Public Health Scientific Services*

MMWR Editorial and Production Staff

Ronald L. Moolenaar, MD, MPH, *Editor, MMWR Series*
 Christine G. Casey, MD, *Deputy Editor, MMWR Series*
 Teresa F. Rutledge, *Managing Editor, MMWR Series*
 David C. Johnson, *Lead Technical Writer-Editor*

Martha F. Boyd, *Lead Visual Information Specialist*

Maureen A. Leahy, Julia C. Martinroe,
 Stephen R. Spriggs, Terraye M. Starr
Visual Information Specialists
 Quang M. Doan, MBA, Phyllis H. King
Information Technology Specialists

MMWR Editorial Board

William L. Roper, MD, MPH, Chapel Hill, NC, *Chairman*
 Matthew L. Boulton, MD, MPH, Ann Arbor, MI
 Virginia A. Caine, MD, Indianapolis, IN
 Barbara A. Ellis, PhD, MS, Atlanta, GA
 Jonathan E. Fielding, MD, MPH, MBA, Los Angeles, CA
 David W. Fleming, MD, Seattle, WA
 William E. Halperin, MD, DrPH, MPH, Newark, NJ
 King K. Holmes, MD, PhD, Seattle, WA

Timothy F. Jones, MD, Nashville, TN
 Rima F. Khabbaz, MD, Atlanta, GA
 Dennis G. Maki, MD, Madison, WI
 Patricia Quinlisk, MD, MPH, Des Moines, IA
 Patrick L. Remington, MD, MPH, Madison, WI
 William Schaffner, MD, Nashville, TN

Abortion Surveillance — United States, 2010

Karen Pazol, PhD
 Andreea A. Creanga, MD, PhD
 Kim D. Burley
 Brenda Hayes, MPA
 Denise J. Jamieson, MD

Division of Reproductive Health, National Center for Chronic Disease Prevention and Health Promotion, CDC

Abstract

Problem/Condition: Since 1969, CDC has conducted abortion surveillance to document the number and characteristics of women obtaining legal induced abortions in the United States.

Reporting Period Covered: 2010.

Description of System: Each year, CDC requests abortion data from the central health agencies of 52 reporting areas (the 50 states, the District of Columbia, and New York City). The reporting areas provide this information voluntarily. For 2010, data were received from 49 reporting areas. For the purpose of trend analysis, abortion data were evaluated from the 46 areas that reported data every year during 2001–2010. Census and natality data, respectively, were used to calculate abortion rates (number of abortions per 1,000 women) and ratios (number of abortions per 1,000 live births).

Results: A total of 765,651 abortions were reported to CDC for 2010. Of these abortions, 753,065 (98.4%) were from the 46 reporting areas that provided data every year during 2001–2010. Among these same 46 reporting areas, the abortion rate for 2010 was 14.6 abortions per 1,000 women aged 15–44 years, and the abortion ratio was 228 abortions per 1,000 live births. Compared with 2009, the total number and rate of reported abortions for 2010 decreased 3% and reached the lowest levels for the entire period of analysis (2001–2010); the abortion ratio was stable, changing only 0.4%. From 2001 to 2010, the total number, rate, and ratio of reported abortions decreased 9%, 10%, and 8%, respectively. Given the 3% decrease from 2009 to 2010 in the total number and rate of reported abortions, in combination with the 5% decrease that had occurred in the previous year from 2008 to 2009, the overall decrease for both measures was greater during 2006–2010 than during 2001–2005, despite the annual variations that resulted in no net decrease during 2006–2008.

In 2010 and throughout the period of analysis, women in their 20s accounted for the majority of abortions and had the highest abortion rates, whereas women in their 30s and older accounted for a much smaller percentage of abortions and had lower abortion rates. In 2010, women aged 20–24 and 25–29 years accounted for 32.9% and 24.5% of all abortions, respectively, and had abortion rates of 26.7 and 20.2 abortions per 1,000 women aged 20–24 and 25–29 years, respectively. In contrast, women aged 30–34, 35–39, and ≥40 years accounted for 15.3%, 8.9%, and 3.4% of all abortions, respectively, and had abortion rates of 13.2, 7.6, and 2.8 abortions per 1,000 women aged 30–34 years, 35–39 years, ≥40 years, respectively. Throughout the period of analysis, abortion rates decreased among women aged 20–24 and 25–29 years, whereas they increased among women aged ≥40 years.

In 2010, adolescents aged 15–19 years accounted for 14.6% of all abortions and had an abortion rate of 11.7 abortions per 1,000 adolescents aged 15–19 years. Throughout the period of analysis, the percentage of all abortions accounted for by adolescents and the adolescent abortion rate decreased.

In contrast to the percentage distribution of abortions and abortion rates by age, abortion ratios in 2010 and throughout the entire period of analysis were highest among adolescents and lowest among women aged 30–39 years. Abortion ratios decreased from 2001 to 2010 for women in all age groups except for those aged <15 years, for whom they increased.

In 2010, most (65.9%) abortions were performed at ≤8 weeks' gestation, and 91.9% were performed at ≤13 weeks' gestation. Few abortions (6.9%) were performed at 14–20 weeks' gestation, and even fewer (1.2%) were performed at ≥21 weeks' gestation. From 2001 to 2010, the percentage of all abortions performed at ≤8 weeks' gestation increased 10%, whereas the percentage performed at >13 weeks' decreased 10%. Moreover, among abortions performed at ≤13 weeks' gestation, the distribution shifted toward earlier gestational ages, with the percentage of these abortions performed at ≤6 weeks' gestation increasing 36%.

In 2010, a total of 72.4% of abortions were performed by curettage at ≤13 weeks' gestation, 17.7% were performed by early medical abortion (a nonsurgical abortion at ≤8 weeks' gestation), and 8.3% were performed by curettage at >13 weeks' gestation.

Among abortions that were performed at ≤ 8 weeks' gestation, and thus were eligible for early medical abortion on the basis of gestational age, 26.5% were completed by this method. From 2009 to 2010, the use of early medical abortion increased 13%.

Deaths of women associated with complications from abortions for 2010 are being investigated under CDC's Pregnancy Mortality Surveillance System. In 2009, the most recent year for which data were available, eight women were identified to have died as a result of complications from known legal induced abortions. No reported deaths were associated with illegal induced abortions.

Interpretation: Among the 46 areas that reported data every year during 2001–2010, the gradual decrease that had occurred during previous decades in the total number and rate of reported abortions continued through 2005, whereas year-to-year variation from 2006 to 2008 resulted in no net change during this later period. However, the large decreases that occurred both from 2008 to 2009 and from 2009 to 2010 resulted in a greater overall decrease during 2006–2010 as compared with 2001–2005 and the lowest number and rate of reported abortions for the entire period of analysis.

Public Health Actions: Unintended pregnancy is the major contributor to abortion. Because unintended pregnancies are rare among women who use the most effective methods of reversible contraception, increasing access to and use of these methods can help further reduce the number of abortions performed in the United States. The data in this report can help program planners and policy makers identify groups of women at greatest risk for unintended pregnancy and help guide and evaluate prevention efforts.

Introduction

This report is based on abortion data for 2010 that were provided voluntarily to CDC by the central health agencies of 49 reporting areas (the District of Columbia; New York City; and 47 states, excluding California, Maryland, and New Hampshire). Data were obtained every year during 2001–2010 from 46 reporting areas (excluding Alaska, California, Louisiana, Maryland, New Hampshire, and West Virginia) and were used for the purpose of trend analyses. Since 1969, CDC has conducted abortion surveillance to document the number and characteristics of women obtaining legal induced abortions in the United States (1). Following nationwide legalization of abortion in 1973, the total number, rate (number of abortions per 1,000 women aged 15–44 years), and ratio (number of abortions per 1,000 live births) of reported abortions increased rapidly, reaching the highest levels in the 1980s before decreasing at a slow yet steady pace (2–6). However, the incidence of abortion has varied considerably across demographic subpopulations (7–11), and more recently, during 2006–2008, an interruption occurred in the previously sustained pattern of decrease (12–15). Continued surveillance is needed to monitor long-term changes in the incidence of abortion in the United States.

Methods

Description of the Surveillance System

Each year, CDC requests tabulated data from the central health agencies of 52 reporting areas (the 50 states, the District of Columbia, and New York City) to document the number and characteristics of women obtaining abortions in the

United States. For the purpose of surveillance, a legal induced abortion* is defined as an intervention performed by a licensed clinician (e.g., a physician, nurse-midwife, nurse practitioner, or physician assistant) that is intended to terminate a suspected or known ongoing intrauterine pregnancy and produce a nonviable fetus at any gestational age.

In most states, collection of abortion data is facilitated by the legal requirement for hospitals, facilities, and physicians to report all abortions to a central health agency (16). However, these central health agencies voluntarily report abortion data to CDC and provide only aggregate numbers for the abortion data they have collected through their independent surveillance systems (17). Nonetheless, although reporting to CDC is voluntary, most reporting areas provide their aggregate abortion numbers: during 2001–2010, a total of 46 reporting areas provided CDC a continuous annual record of abortion numbers,[†] and in 2010, CDC obtained aggregate abortion numbers from 49 reporting areas (excluding California, Maryland, and New Hampshire).

Although CDC obtains abortion numbers from most of the central health agencies, the level of detail that it receives on the characteristics of women obtaining abortions varies considerably from year to year and among reporting areas. To encourage more uniform collection of these details, CDC has collaborated with the National Association of Public Health Statistics and Information Systems (NAPHSIS) to develop reporting standards and provide technical guidance for vital statistics personnel who

* Hereafter, all abortions in this report are considered to be legally induced unless stated to be illegally induced.

[†] Data were not reported for ≥ 1 year by Alaska (2001–2002), California (2001–2010), Louisiana (2005), Maryland (2007–2010), New Hampshire (2001–2010), and West Virginia (2003–2004). Delaware was not included in the 2009 report, but subsequent to publication provided 2009 data that have been included in the current report.

collect and summarize abortion data within the United States. However, because the collection of abortion data is not federally mandated, many reporting areas have developed their own forms and do not collect all the information that CDC compiles.

Variables and Categorization of Data

Each year, CDC sends suggested templates to the central health agencies for compilation of abortion data in aggregate. Aggregate abortion numbers, but no individual-level records, are requested for the following variables:

- Age in years of the woman (<15, 15–19 by individual year, 20–24, 25–29, 30–34, 35–39, or ≥40)
- Gestational age in weeks at the time of abortion (≤6, 7–20 by individual week, or ≥21)
- Race (black, white, Asian, Native Hawaiian/Pacific Islander, or American Indian/Alaska Native)
- Ethnicity (Hispanic or non-Hispanic)
- Method type (curettage,[§] intrauterine instillation, medical [nonsurgical] abortion, or other[¶])
- Marital status (married [including currently married or separated] or unmarried [including never married, widowed, or divorced])
- Number of previous live births (0, 1, 2, 3, or ≥4)
- Number of previous abortions (0, 1, 2, or ≥3)
- Maternal residence (the state, reporting area, territory, or foreign country in which the woman obtaining the abortion lived, or, if additional details are unavailable, in-reporting area versus out-of-reporting area)

In addition to sending templates for compiling information on race and ethnicity as separate variables, CDC has provided alternative templates since 2001 for the tabulation of aggregate cross-classified race/ethnicity data. Before 2007, few reporting areas returned these alternative templates. Therefore, 2010 is only the fourth year for which CDC has had sufficient data to report results by these cross-classified race/ethnicity categories (non-Hispanic white, non-Hispanic black, non-Hispanic other, and Hispanic).

Finally, both the original and alternative templates provided by CDC request that aggregate numbers for certain variables be cross-tabulated by a second variable. These cross-tabulations include gestational age (separately by age, by method type, by race, by ethnicity, and by race/ethnicity) and age and marital status (separately by race, by ethnicity, and by race/ethnicity).

In this report, medical abortions and abortions performed by curettage are further categorized by gestational age. For

medical abortion, early medical abortion is defined as the administration of medication or medications (typically mifepristone followed by misoprostol) to induce an abortion at ≤8 weeks' gestation^{**}; medical abortion at >8 weeks' gestation is defined as the administration of medication or medications (typically vaginal prostaglandins) to induce an abortion at >8 weeks' gestation. For curettage, abortions are categorized as having been performed at ≤13 weeks' gestation or at >13 weeks' gestation because of differences in technique used before and after 13 weeks (19). Finally, because intrauterine instillations cannot be performed early in gestation, abortions reported to have been performed by intrauterine installation at ≤12 weeks' gestation are excluded from calculation of the percentage of abortions by known method type.^{††}

Measures of Abortion

Four measures of abortion are presented in this report: 1) the total number of abortions in a given population, 2) the percentage of abortions obtained by women in a given population, 3) the abortion rate (number of abortions per 1,000 women aged 15–44 years or other specific group within a given population), and 4) the abortion ratio (number of abortions per 1,000 live births within a given population). Although total numbers and percentages are useful measures for determining how many women have obtained an abortion, abortion rates adjust for differences in population size and reflect how likely abortion is among women in particular groups. Abortion ratios measure the relative number of pregnancies in a population that end in abortion compared with live birth. Abortion ratios are influenced both by the proportion of pregnancies in a population that are unintended and the proportion of unintended pregnancies that end in abortion. Abortion ratios also are influenced by the proportion of intended pregnancies that end in abortion; however, intended pregnancies account for a very small percentage of abortions (<5%) (22).

U.S. Census Bureau estimates of the resident female population of the United States, compiled by CDC, were used as the denominator for calculating abortion rates (23–32). Overall abortion rates were calculated from the population of women aged 15–44 years living in the areas that provided data. For

^{**} CDC collects information only on the estimated number of weeks (not days) of gestation and acknowledges the conventional use of completed weeks of gestation to describe pregnancy duration. CDC's category "≤8 weeks' gestation" thus includes abortions up through 8 weeks and 6 days, which closely corresponds to the gestational age limit of 63 days for the early medical abortion protocol endorsed by the American College of Obstetricians and Gynecologists (18).

^{††} The cutoff of ≤12 weeks has been selected on the basis of the implausibility of this procedure being performed at earlier gestational ages, and on the basis of early research assessing the safety of intrauterine instillations starting at 13 weeks' gestation (20,21).

[§] Includes aspiration curettage, suction curettage, manual vacuum aspiration, menstrual extraction, sharp curettage, and dilation and evacuation procedures.

[¶] Includes hysterectomy and hysterotomy and other methods that do not belong to a defined category.

adolescents aged <15 years, abortion rates were based on the number of adolescents aged 13–14 years; similarly, for women aged ≥40 years, abortion rates were based on the number of women aged 40–44 years. For the calculation of abortion ratios, live birth data were obtained from CDC natality files (33) and included births to women of all ages living in the reporting areas that provided abortion data.

Data Presentation and Analysis

This report provides state-specific and overall abortion numbers, rates, and ratios for the 49 areas that reported to CDC for 2010 (excludes California, Maryland, and New Hampshire). In addition, this report describes the characteristics of women who obtained abortions in 2010. Because the completeness of reporting on the characteristics of women varies by year and by variable, this report only describes the characteristics of women obtaining abortions in areas that met reporting standards (i.e., reported at least 20 abortions, provided data categorized in accordance with surveillance variables, and had <15% unknown values for a given characteristic). Cells with a value in the range of 1–4 have been suppressed to maintain confidentiality. In addition, abortion rates and ratios have been omitted for groups with <20 abortions because results are considered unstable.

Although most of the data in this report are presented by the reporting area in which the abortions were performed, 48 reporting areas^{§§} also provided the number of abortions by maternal residence. However, two of these reporting areas (Illinois and Wisconsin) reported certain characteristics for in-state residents but not for out-of-state residents. Three other reporting areas (Iowa, Louisiana, and Massachusetts) provided only the total number of abortions for out-of-state residents without specifying individual states or areas of residence from which these women came. As a result, abortion statistics in this report by area of residence are minimum estimates and might be disproportionately low for reporting areas from which many women travel to other states to obtain abortion services.

For the purpose of evaluating overall trends in the number, rate, and ratio of reported abortions, annual data are presented for the 46 areas that reported every year during 2001–2010. Linear regression analysis was used to assess the overall rate of change among these areas during 2001–2010 and during the first and second half of the period of analysis (2001–2005 and 2006–2010). Percentage change calculations (for 2009 to 2010 and for 2001 to 2010) also were calculated with the same 46 areas that provided data for every year included in this report.

^{§§} Excludes four states that did not report or did not report by maternal residence (California, Florida, Maryland, and New Hampshire).

For the analysis of certain additional variables (abortions by maternal age, gestational age, race, and ethnicity), annual data are presented for areas that met reporting standards every year during 2001–2010, and the percentage change was calculated for 2001 to 2010, 2001 to 2005, 2006 to 2010, and 2009 to 2010. For other variables (method for performing an abortion, marital status, number of previous abortions, and number of previous live births), annual data are not presented, and areas were included as long as they provided data that met reporting standards for the years needed for percentage change calculations.

To evaluate trends in the use of different methods for performing an abortion, reporting areas were included only if they met reporting standards and if they specifically included medical abortion as a method on their reporting form. Because some of the 49 areas that reported for 2010 were not included in certain trend analyses, summary measures for comparisons over time might differ slightly from the point estimates presented for all areas that reported for 2010.

Abortion Mortality

CDC has reported data on abortion-related deaths periodically since information on abortion mortality first was included in the 1972 abortion surveillance report (34,35). An abortion-related death is defined as a death resulting from a direct complication of an abortion (legal or illegal), an indirect complication caused by a chain of events initiated by an abortion, or an aggravation of a preexisting condition by the physiologic or psychologic effects of abortion (36). All deaths determined to be related causally to induced abortion are classified as abortion-related regardless of the time between the abortion and death. In addition, any pregnancy-related death in which the pregnancy outcome was induced abortion regardless of the causal relation between the abortion and the death is considered an abortion-related death. An abortion is defined as legal if it is performed by a licensed clinician; an abortion is defined as illegal if it is performed by any other person.

Since 1987, CDC has monitored abortion-related deaths through its Pregnancy Mortality Surveillance System (37). Sources of data for abortion-related deaths have included state vital records, public health agencies, maternal mortality review committees, health-care providers and provider organizations, private citizens and citizen groups, and media reports, including computerized searches of full-text newspaper and other print media databases. For each death that possibly is related to abortion, CDC requests clinical records and autopsy reports. Two medical epidemiologists review these reports to determine the cause of death and whether the death was abortion related. Each death is categorized by abortion type as legal induced, illegal induced, spontaneous, or unknown type.

This report provides data on induced abortion-related deaths that occurred in 2009, the most recent year for which data are available. Data on induced abortion-related deaths that occurred during 1972–2008 already have been published (35) and possible abortion-related deaths that occurred during 2010–2013 are under investigation. For 1998–2009, surveillance data reported to CDC cannot be used alone to calculate national case-fatality rates (number of legal induced abortion-related deaths per 100,000 reported legal induced abortions in the United States) because some states (four during 1998–1999, three during 2000–2005 and 2007–2009, and two during 2006), including California, did not report abortion surveillance data. Thus, national legal induced abortion case-fatality rates were calculated with denominator data from a more complete source on the total number of abortions performed in the United States (12). Because rates based on ≤ 20 deaths are highly variable (38), national legal induced abortion case-fatality rates were calculated for consecutive 5-year periods during 1973–2002 and a 7-year period during 2003–2009.

Results

U.S. Totals

Among the 49 reporting areas that provided data for 2010, a total of 765,651 abortions were reported. Of these abortions, 753,065 (98.4%) were obtained in the 46 reporting areas that provided data every year during 2001–2010.^{¶¶} These same 46 areas had an abortion rate of 14.6 abortions per 1,000 women aged 15–44 years and an abortion ratio of 228 abortions per 1,000 live births (Table 1). Compared with 2009, the total number of abortions reported for the same 46 areas decreased 3% (from 777,239). The abortion rate for these 46 areas also decreased 3% (from 15.0 abortions per 1,000 women aged 15–44 years), while the abortion ratio was stable (changing only 0.4% from 227 abortions per 1,000 live births). From 2001 to 2010, the total number of reported abortions decreased 9% (from 826,719), the abortion rate decreased 10% (from 16.2 abortions per 1,000 women aged 15–44 years), and the abortion ratio decreased 8% (from 249 abortions per 1,000 live births) (Figure 1). For the total number and rate, but not the ratio of reported abortions, the annual rate of decrease fitted from the regression analysis was greater during 2006–2010 than during 2001–2005. During 2006–2010, the number of reported abortions decreased by 19,924 abortions per year, the abortion rate decreased by 0.40 abortions per 1,000 women per year, and the abortion ratio decreased by 2.1 abortions per 1,000 live births per year. In contrast, during 2001–2005, the number of reported abortions decreased by only 5,405 abortions per year, and the abortion rate decreased by only 0.13 abortions

per 1,000 women per year, while the abortion ratio decreased by 3.5 abortions per 1,000 live births per year.

Occurrence and Residence

Abortion numbers, rates, and ratios have been calculated by individual state or reporting area of occurrence and the residence of the women who obtained the abortions (Table 2). By occurrence, a considerable range existed^{***} in the abortion rate (ranging from 3.8 abortions per 1,000 women aged 15–44 years in Mississippi to 28.6 in New York [city and state combined]), and the abortion ratio (ranging from 57 abortions per 1,000 live births in Mississippi to 474 in New York [city and state combined]). Similarly, a considerable range existed by residence^{†††} in the abortion rate (ranging from 5.2 abortions per 1,000 women aged 15–44 years in South Dakota to 27.6 in New York [city and state combined]), and the abortion ratio (ranging from 67 abortions per 1,000 live births in South Dakota to 458 in New York [city and state combined]). Because of the substantial variation that also occurred among reporting areas in the percentage of abortions obtained by out-of-state residents^{§§§} (ranging from 0.4% in Hawaii to 52.4% in the District of Columbia), abortion rates and ratios calculated by maternal residence might provide a more accurate reflection of the state-specific patterning of abortion. However, these measures must be viewed with caution because states vary in the level of detail they collect on maternal residence and as a result, 11.4% of abortions were reported to CDC without information on maternal residence.

Age

Among the 46 areas that reported by maternal age for 2010, women in their 20s accounted for the majority (57.4%) of abortions and had the highest abortion rates (26.7 and 20.2 abortions per 1,000 women aged 20–24 and 25–29 years, respectively) (Figure 2, Table 3). Women in the youngest and oldest age groups (aged <15 or ≥ 40 years) accounted for the smallest percentage of abortions (0.5% and 3.4%, respectively) and had the lowest abortion rates (1.0 and 2.8 abortions per 1,000 women aged <15 and ≥ 40 years, respectively). Among the 43 reporting areas that provided data every year during 2001–2010, this pattern across age groups was stable, with the

^{***} Comparisons of state-specific abortion rates and ratios do not consider Wyoming, which reported <20 abortions.

^{†††} Comparisons by residence status do not consider California, Delaware, Florida, Maryland, or New Hampshire. Because these states either did not report or did not report abortions by maternal residence, numbers are available only from other states where their residents obtained abortions and as a consequence are not complete.

^{§§§} Does not consider the percentage for Wyoming, which was based on <20 abortions and was judged to be unstable.

^{¶¶} Excludes Alaska, California, Louisiana, Maryland, New Hampshire, and West Virginia.

majority of abortions and the highest abortion rates occurring among women aged 20–29 years and the lowest percentages of abortions and abortion rates occurring among women in the youngest and oldest age groups (Table 4). However, from 2001 to 2010 the abortion rate and percentage of abortions accounted for by younger women decreased, whereas the abortion rate and percentage of abortions accounted for by older women increased. Among women aged <30 years, decreases in the abortion rate were greatest from 2006 to 2010, but also occurred from 2001 to 2005 and resulted in overall decreases ranging from 12% to 33%. In contrast, among women aged ≥40 years, abortion rates increased during both periods, resulting in an overall increase of 12%. Among women aged 30–39 years, abortion rates varied more from year to year, resulting in smaller overall changes.

In contrast to the percentage distribution of abortion numbers and abortion rates, abortion ratios in 2010 were highest among adolescents aged ≤19 years and lowest among women aged 30–39 years (Figure 2, Table 3). Among the 43 reporting areas that provided data for every year during 2001–2010, abortion ratios decreased among all women aged ≥15 years. For most age groups ≥15 years, abortion ratios decreased both from 2001 to 2005 and from 2006 to 2010. However for women aged 20–24 years, abortion ratios decreased from 2001 to 2005 but then increased from 2006 to 2010 (Table 4).

Adolescents

Among the 45 areas that reported age by individual year among adolescents for 2010, adolescents aged 18–19 years accounted for the majority (64.5%) of adolescent abortions and had the highest adolescent abortion rates (16.1 and 20.9 abortions per 1,000 adolescents aged 18 and 19 years, respectively); adolescents aged <15 years accounted for the smallest percentage of adolescent abortions (3.1%) and had the lowest adolescent abortion rate (1.0 abortions per 1,000 adolescents aged 13–14 years) (Table 5). Among the 41 reporting areas that provided data for adolescents by individual year of age every year during 2001–2010, this pattern across age groups was stable, with older adolescents consistently accounting for the largest percentage of adolescent abortions and having the highest abortion rates (Table 6). Although the percentage of abortions accounted for by adolescents aged 19 years increased from 2001 to 2010, abortion rates decreased among adolescents of all ages; these decreases occurred both from 2001 to 2005 and from 2006 to 2010, and continued for all adolescents ≥15 years from 2009 to 2010.

In 2010, adolescent abortion ratios decreased with increasing age and were lowest among adolescents aged 19 years (Table 5). Among the 41 reporting areas that provided data for adolescents

by individual year of age for every year during 2001–2010, abortion ratios increased among adolescents aged ≤15 years and decreased among adolescents aged >15 years (Table 6).

Gestational Age

Among the 37 areas that reported gestational age at the time of abortion for 2010 (Table 7), the majority (65.9%) of abortions were performed at ≤8 weeks' gestation, and 91.9% were performed at ≤13 weeks' gestation. Few abortions (6.9%) were performed at 14–20 weeks' gestation, and even fewer (1.2%) were performed at ≥21 weeks' gestation. Among the 30 reporting areas that provided data on gestational age every year during 2001–2010 (Table 8), the percentage of abortions performed at ≤13 weeks' gestation increased only slightly. However, within this gestational age range, a shift occurred toward earlier gestational ages, with abortions performed at ≤8 weeks' gestation increasing 10% and abortions performed at 9–13 weeks decreasing 17%. The percentage increase in abortions performed at ≤8 weeks' was greatest from 2001 to 2005 but it continued from 2006 to 2010. During 2001–2010, the percentage of abortions performed at >13 weeks' gestation remained low (≤9.1%), and abortions performed at ≥16 weeks' gestation decreased 13%–19%.

Among the subset of abortions performed at ≤13 weeks' gestation in 2010, 37.8% were performed at ≤6 weeks' gestation (Table 9). Among the remaining abortions at ≤13 weeks' gestation, the percentage contribution was progressively lower for each additional week of gestation: 19.3% were performed at 7 weeks' gestation, whereas 2.9% were performed at 13 weeks' gestation. Among the 30 areas that reported by the exact week of gestational age for every year during 2001–2010, the percentage of abortions shifted over time toward earlier gestational ages: among abortions performed at ≤13 weeks' gestation, those that were performed at ≤6 weeks' gestation increased 36%, whereas the percentage performed at 7–13 weeks' gestation decreased up to 23% (Table 10); the percentage increase in abortions performed at ≤6 weeks' was greatest from 2001 to 2005, but this increase continued from 2006 to 2010.

Method Type

Among the 38 areas that reported by method type for 2010 and included medical abortion on their reporting form for medical providers, 72.4% of abortions were performed by curettage at ≤13 weeks' gestation, 17.7% were performed by early medical (nonsurgical) abortion, 8.3% were performed by curettage at >13 weeks' gestation, and all other methods were uncommon (Table 11). Among the 26 reporting areas that included medical abortion on their reporting form and provided this data for the relevant years of comparison (2001,

2005, 2006, 2009, and 2010),^{§§§} the use of early medical abortion increased 13% from 2009 to 2010 (from 15.2% of abortions in 2009 to 17.2% in 2010); from 2001 to 2010, use of medical abortion increased approximately 400% (from 3.4% of abortions in 2001 to 17.2% in 2010). Large increases occurred both from 2001 to 2005 (approximately 200% from 3.4% of abortions in 2001 to 9.9% in 2005), and from 2006 to 2010 (approximately 65% from 10.5% of abortions in 2006 to 17.2% in 2010). In contrast, use of curettage at ≤13 weeks' gestation decreased 4% from 2009 to 2010 and 17% over the entire period of analysis (from 87.2% of abortions in 2001 to 75.5% in 2009 and 72.8% in 2010). Similar decreases in use of curettage at ≤13 weeks' gestation were observed from 2001 to 2005 and from 2006 to 2010. All other methods consistently accounted for a small percentage of abortions (0.05%–1.3%).

Race/Ethnicity

Among the 28 areas that reported cross-classified race/ethnicity data for 2010 (Table 12), non-Hispanic white women and non-Hispanic black women accounted for the largest percentages of abortions (36.8% and 35.7%, respectively), whereas Hispanic women and non-Hispanic women in the other races category accounted for smaller percentages (21.0% and 6.5%, respectively). Non-Hispanic white women had the lowest abortion rates (8.6 abortions per 1,000 women aged 15–44 years) and ratios (141 abortions per 1,000 live births), whereas non-Hispanic black women had the highest abortion rates (31.8 abortions per 1,000 women aged 15–44 years) and ratios (483 abortions per 1,000 live births).

Among the 22 areas^{****} that reported by race/ethnicity every year during 2007–2010, abortion rates decreased for all racial/ethnic groups, although decreases for non-Hispanic black women were smaller than for other groups. For non-Hispanic white women the abortion rate decreased 11% (from 9.3 abortions per 1,000 women in 2007 to 8.3 in 2010), for Hispanic women it decreased 9% (from 20.7 abortions per 1,000 women in 2007 to 18.9 in 2010), and for non-Hispanic black women it decreased 5% (from 34.8 abortions per 1,000 women in 2007 to 33.2 in 2010). In contrast, abortion ratios decreased among non-Hispanic white women but not among women in any other racial/ethnic group.

^{§§§} Excludes Alabama, Alaska, Arizona, California, Colorado, Connecticut, Delaware, Florida, Georgia, Hawaii, Illinois, Indiana, Iowa, Kentucky, Louisiana, Maryland, Massachusetts, Nevada, New Hampshire, Oklahoma, Rhode Island, Tennessee, Vermont, West Virginia, Wisconsin, and Wyoming.

^{****} Excludes Arizona, California, Connecticut, Delaware, District of Columbia, Florida, Hawaii, Illinois, Iowa, Kentucky, Louisiana, Maine, Maryland, Massachusetts, Michigan, Nebraska, Nevada, New Hampshire, New Mexico, New York State, North Carolina, North Dakota, Oklahoma, Pennsylvania, Rhode Island, South Carolina, Vermont, Washington, Wisconsin, and Wyoming.

For non-Hispanic white women, the abortion ratio decreased 6% (from 144 abortions per 1,000 live births in 2007 to 136 in 2010), whereas the abortion ratio increased 3% for non-Hispanic black women (from 486 abortions per 1,000 live births in 2007 to 503 in 2010) and 8% for Hispanic women (from 204 abortions per 1,000 live births in 2007 to 221 in 2010). Data also are reported separately by race and by ethnicity for 2010 (Tables 13 and 15) and for 2001–2010 (Tables 14 and 16).

Marital Status

Among the 38 areas that reported by marital status for 2010, 14.7% of all women who obtained abortions were married and 85.3% were unmarried (Table 17). The abortion ratio was 52 abortions per 1,000 live births for married women, and 438 abortions per 1,000 live births for unmarried women. For the 32 reporting areas^{††††} that provided these data for the relevant years of comparison (2001, 2005, 2006, 2009, and 2010), the percentage of abortions accounted for by unmarried women increased 4% from 2001 to 2010 (from 81.7% in 2001 to 85.3% in 2010); similar increases of approximately 2% occurred both from 2001 to 2005 and from 2006 to 2010. Among married women, the abortion ratio decreased 19% from 2001 to 2010 (from 64 to 52 abortions per 1,000 live births), with similar decreases of approximately 10% occurring from 2001 to 2005 and from 2006 to 2010. Among unmarried women, the abortion ratio decreased 21% from 2001 to 2010 (from 570 to 449 abortions per 1,000 live births). For unmarried women, the decrease was somewhat greater for 2001 to 2005 (13%) than for 2006 to 2010 (7%).

Previous Live Births and Abortions

Data from the 39 areas that reported the number of previous live births for women who obtained abortions in 2010 show that 40.3%, 45.9%, and 13.8% of these women had zero, one to two, or three or more previous live births, respectively (Table 18). Among the 30 reporting areas^{§§§§} that provided these data for the relevant years of comparison (2001, 2005, 2006, 2009, and 2010), the distribution of abortions by the number of previous live births was stable, although there was a slight increase among women who had zero or three or more previous live births, and a slight decrease among women who had one to two previous live births. Among the areas included in this comparison, 39.3%, 48.2%, and 12.5% of women had zero, one to two, or three

^{††††} Excludes Alaska, Arizona, Arkansas, California, Connecticut, District of Columbia, Florida, Georgia, Louisiana, Maine, Maryland, Massachusetts, Nebraska, Nevada, New Hampshire, New York State, Rhode Island, Vermont, Washington and Wyoming.

^{§§§§} Excludes Alaska, Arizona, California, Connecticut, Delaware, District of Columbia, Florida, Georgia, Illinois, Kentucky, Louisiana, Maryland, Massachusetts, New Hampshire, New Mexico, New York State, North Carolina, Rhode Island, Texas, Vermont, Wisconsin, and Wyoming.

or more previous live births, respectively in 2001; by contrast 41.0%, 45.8% and 13.2% of women had zero, one to two, or three or more live births, respectively in 2010.

Data from the 38 areas that reported the number of previous abortions for women obtaining abortions in 2010 indicate that the majority of women (55.4%) had no previous abortions; 36.1% had either one to two previous abortions, and 8.5% had three or more previous abortions (Table 19). Among the 32 reporting areas^{****} that provided data for the relevant years of comparison (2001, 2005, 2006, 2009, and 2010), the distribution of abortions by the number of previous abortions was stable, although there was a slight decrease among women who had zero previous abortions and a slight increase among women who had three or more previous abortions. Among the areas included in this comparison, 55.6%, 36.7%, and 7.7% of women had zero, one to two, or three or more previous abortions, respectively, in 2001; by contrast, 54.2%, 36.7%, and 9.1% of women had zero, one to two, or three or more previous abortions, respectively, in 2010.

Age and Marital Status by Race/Ethnicity

In certain reporting areas, abortions that were categorized by maternal race and race/ethnicity were further categorized by maternal age and by marital status (Tables 20 and 21). A consistent pattern existed for abortions by age across all race/ethnicity groups (Table 21), with the smallest percentage of abortions occurring among adolescents aged <15 years (0.3%–0.6%) and the largest percentage occurring among women aged 20–24 years (27.0%–33.5%). A consistent pattern also existed for abortion by marital status across all race/ethnicity groups, with a higher percentage of abortions occurring among women who were unmarried (65.8%–90.6%) than among those who were married (9.4%–34.2%). Although most abortions occurred among unmarried women in all racial/ethnic groups, this percentage was higher for non-Hispanic black women (90.6%) than it was for non-Hispanic white (83.2%) or Hispanic women (83.7%).

Weeks of Gestation by Age, Race/Ethnicity, and Method Type

In certain reporting areas, abortions that were categorized by weeks of gestation were further categorized by maternal age, race, and race/ethnicity (Tables 22 and 23). In every subgroup for these three variables, the largest percentage of abortions was obtained at ≤8 weeks' gestation. However, by age, 45.0%

of adolescents <15 years and 56.4% of adolescents 15–19 years obtained an abortion by ≤8 weeks' gestation, whereas 64.0%–73.4% of adult women obtained an abortion by this point in gestation (Figure 3; Table 22). Conversely, 20.3% of adolescents aged <15 years and 11.8% of adolescents 15–19 years obtained an abortion after 13 weeks' gestation, whereas this percentage ranged from 6.6%–8.5% for adult women. By race/ethnicity, 60.1% of non-Hispanic black women obtained an abortion at ≤8 weeks' gestation, whereas 69.3%–71.7% of women from other racial/ethnic groups obtained an abortion by this point in gestation. Non-Hispanic black women also obtained the highest percentage of abortions after 13 weeks' gestation; however, differences across racial/ethnic groups were less apparent than differences across age groups.

Among abortions categorized by method type and gestational age, curettage accounted for the largest percentage of abortions within every gestational age category (Table 24). At ≤8 weeks' gestation, curettage accounted for a smaller percentage of abortions (73.0%) than at any other stage of gestation. At 9–17 weeks' gestation, curettage accounted for 96.1%–98.2% of all abortions and then decreased to 94.1% of abortions at 18–20 weeks' gestation and 91.2% of abortions at ≥21 weeks' gestation. By contrast, at ≤8 weeks' gestation, early medical abortion accounted for a comparatively high percentage of abortions (26.5%), but at all subsequent points in gestation the use of medications to induce abortions through nonsurgical methods accounted for only 0.7%–3.8% of reported abortions. Throughout gestation, intrauterine instillations and abortions reported in the other methods category accounted for a small percentage (<0.01%–4.1%) of abortions.

Abortion Mortality

Using national data from the Pregnancy Mortality Surveillance System (37), CDC identified eight abortion-related deaths for 2009 (Table 25). These deaths were identified either by some indication of abortion on the death certificate, by reports from a health-care provider or public health agency, or from a media report. Investigation of these cases indicated that all eight deaths were related to legal abortion and none to illegal abortion.

The annual number of deaths related to legal induced abortions has fluctuated from year to year over the past 37 years (Table 25). For example, 12 abortion-related deaths occurred in 1994, four deaths in 1995, and nine deaths in 1996. Because of this variability and the relatively small number of abortion-related deaths every year, national case-fatality rates were calculated for consecutive 5-year periods during 1973–2002 and a 7-year period during 2003–2009. The national legal induced abortion case-fatality rate for 2003–2009 was 0.67 legal induced abortion-related deaths per

^{****} Excludes Alaska, Arizona, California, Connecticut, Delaware, District of Columbia, Florida, Georgia, Hawaii, Illinois, Louisiana, Maryland, Massachusetts, New Hampshire, New Mexico, North Carolina, Ohio, Vermont, Wisconsin, and Wyoming.

100,000 reported legal abortions. This case fatality rate was similar to the rate for the preceding 5-year period (1998–2002) but lower than the case-fatality rate of 2.09 legal induced abortion-related deaths per 100,000 reported abortions for the first 5-year period (1973–1977) immediately following initial nationwide legalization of abortion in 1973. Possible abortion-related deaths that occurred during 2010–2013 are under investigation.

Discussion

For 2010, a total of 765,651 abortions were reported. Of these abortions, 753,065 (98.4%) were from the 46 reporting areas that submitted data every year during 2001–2010, thus providing the information necessary for evaluating trends. These 46 areas had an abortion rate of 14.6 abortions per 1,000 women aged 15–44 years and an abortion ratio of 228 abortions per 1,000 live births. Compared with 2009, this represents a 3% decrease in the total number (from 777,239) and rate (from 15.0 abortions per 1,000 women) of reported abortions. Because of the size of this decrease, combined with the 5% decrease from 2008 to 2009 (35), the overall rate of decrease for both measures was greater during 2006–2010 than during 2001–2005, despite the annual variations that resulted in no net decrease during 2006–2008 (13–15). In contrast to the total number and rate of reported abortions, the ratio of reported abortions to live births was stable (changing only 0.4% from 2009 to 2010). This finding is consistent with the 3% decrease in the total number of births and the fertility rate (live births per 1,000 women aged 15–44 years) from 2009 to 2010 (39), which matches the 3% decrease reported here for the total number of abortions and the abortion rate.

In addition to highlighting changes that occurred among all women of reproductive age, this report underscores important age differences in abortion trends. During 2001–2010, women in their 20s consistently accounted for the majority of abortions (58%–59%) and therefore have contributed substantially to overall changes in abortion rates. Conversely, women aged ≥ 40 years consistently have accounted for a small percentage of abortions ($\leq 3.5\%$ during 2001–2010) and have had a much smaller contribution to overall abortion trends. Nonetheless, among women aged ≥ 40 years, abortion rates have shown a small yet persistent increase and abortion ratios remain high. Together with the continuing small proportion of abortions performed later in gestation among women in this age group, which potentially might be completed for maternal medical indications or fetal anomalies, these patterns suggest that unintended pregnancy is a problem that women encounter throughout their reproductive years.

The adolescent abortion trends described in this report are important for monitoring progress that has been made toward reducing pregnancies among adolescents in the United States. During 1990–2008, the pregnancy rate for adolescents aged 15–19 years decreased 40% (5). Although this decrease was associated with significant decreases in rates of live births and abortions, decreases during this period were even greater for abortions than live births (5). Data from this and other recent reports indicate continuing decreases in pregnancies among adolescents, with large decreases occurring both from 2008 to 2009 and from 2009 to 2010 in birth (6% and 10%, respectively) and abortion rates (8% and 9%, respectively) among adolescents aged 15–19 years (35,39,40).

The findings in this report on race and ethnicity reflect differences in patterns of obtaining abortions that have been well-documented and observed for many years (2–11). Comparatively high abortion rates and ratios among non-Hispanic black women can be attributed to higher unintended pregnancy rates and a higher percentage of unintended pregnancies ending in abortion (41,42). Data from some recent reports suggest that differences in measures of abortion between non-Hispanic black women and women of other races have narrowed (10,11). However, this pattern has not been observed in the data reported to CDC for 2010 or in previous years. High abortion rates among Hispanic compared with non-Hispanic white women have been attributed to high pregnancy rates among Hispanic women (41,42). However, abortion ratios in these two groups have been more comparable: Hispanic women have tended to have a slightly higher percentage of pregnancies that are unintended but are no more likely than non-Hispanic white women to end unintended pregnancies in abortion (42). Differences between non-Hispanic white and Hispanic women in abortion rates changed little from 2007 to 2010, although the difference in abortion ratios widened, with a decrease for non-Hispanic white women and an increase for Hispanic women.

The findings in this report indicate that more women are obtaining abortions earlier in gestation, when the risks for complications are lowest (43–47). Among the areas that reported data every year during 2001–2010, the percentage of abortions performed at ≤ 8 weeks' gestation increased 10%. Moreover, among the areas that reported abortions at ≤ 13 weeks' gestation by individual week, a clear shift in the distribution toward earlier weeks of gestation was observed: from 2001 to 2010, abortions performed at ≤ 6 weeks' gestation increased 36%, whereas those performed at ≥ 8 weeks' gestation decreased 10%–23%. However, the shift toward earlier gestational ages was greater from 2001 to 2005 than from 2006 to 2010, suggesting that this trend might have slowed in recent years. Moreover, the overall percentage of abortions performed at ≤ 13 weeks' gestation changed little during

2001–2010, and findings from this report and other research suggest that delays in obtaining an abortion are more common among certain groups of women (48,49). Given the small but persistent percentage of women who obtain abortions at >13 weeks' gestation, a greater understanding is needed of the factors that cause delays in obtaining abortions (48,50–52).

The trend of obtaining abortions earlier in pregnancy, although not observed equally among all subgroups of women, has been facilitated by changes in abortion practices. Research conducted in the United States during the 1970s indicated that surgical abortion procedures performed at ≤6 as compared with 7–12 weeks' gestation were less likely to result in successful termination of the pregnancy (53). However, subsequent advances in technology (e.g., improved transvaginal ultrasonography and sensitive pregnancy tests) have allowed very early surgical abortions to be performed with high effectiveness rates exceeding 97% (43,54–56). Likewise, the development of medical abortion regimens has allowed for abortions to be performed very early in gestation, with completion rates for regimens that combine mifepristone and misoprostol reaching 96%–98% (57). In 2010, 65.9% of abortions were performed at ≤8 weeks' gestation and thus the women receiving these abortions were eligible for early medical abortion on the basis of gestational age; 26.5% of these abortions at ≤8 weeks' gestation and 17.7% of all abortions were reported as early medical abortions. Moreover, the use of early medical abortion has increased substantially since the U.S. Food and Drug Administration approval of mifepristone: from 2001 to 2010, the percentage of all reported abortions accounted for by this method increased approximately 400%. Furthermore, whereas the largest increases were observed after the initial years of approval (58), the proportional use of this method has continued to increase: from 2009 to 2010, the percentage of all abortions reported as early medical abortion increased 13%, as compared with the 10% increase that occurred from 2008 to 2009 (35).

The annual number of legal induced abortions has fluctuated from year to year over the past 37 years. Because of this variability and the relatively small number of abortion-related deaths every year, national case-fatality rates could only be calculated for consecutive 5-year periods during 1973–2002 and a 7-year period during 2003–2009. The national legal induced abortion case-fatality rate for 2003–2009 was similar to the case fatality rate for the preceding 5-year period of 1998–2002, but much lower than the case fatality year for the period of 1973–1978 that immediately followed nationwide legalization of abortion in 1973.

Limitations

The findings in this report are subject to at least four limitations. First, because reporting requirements are established by the individual reporting areas (17), the collection of data varies, and CDC is unable to obtain the total number of abortions performed in the United States. During the period covered by this report, the total annual number of abortions recorded by CDC was 65%–69% of the number recorded by the Guttmacher Institute (12,59), which uses numerous active follow-up techniques to increase the completeness of the data obtained through its periodic national census of abortion providers (12). Although most reporting areas collect and send abortion data to CDC, this information is given to CDC voluntarily. Consequently, during 2001–2010, six of the 52 reporting areas did not provide CDC data on a consistent annual basis, and for 2010, CDC did not obtain any information from California, Maryland, or New Hampshire.***** In addition, whereas most of the reporting areas that send abortion data to CDC have laws requiring medical providers to submit a report for every abortion they perform to a central health agency, in New Jersey and the District of Columbia, medical providers submit this information voluntarily (16). As a result, the abortion numbers these areas report to CDC are incomplete.††††† Moreover, even in states that legally require medical providers to submit a report for all the abortions they perform, enforcement of this requirement varies (60). Consequently, several other reporting areas tend to provide CDC with incomplete numbers.§§§§§

Second, because reporting requirements are established by the individual reporting areas, many states have developed reporting forms that do not follow the technical standards and guidance CDC developed in collaboration with NAPHISIS. Consequently, many reporting areas do not collect all the information CDC compiles on the characteristics of women obtaining abortions (e.g., age, race, and ethnicity) (60). Although missing demographic information can reduce

***** In 2008, the most recent year for which the Guttmacher Institute has published data, abortions performed in California, Delaware, Maryland, and New Hampshire accounted for 21% of all abortions counted through the Guttmacher Institute's national census of abortion providers (12).

††††† In 2008, the abortion counts that CDC obtained from New Jersey and the District of Columbia were 53% and 57%, respectively, of the abortion counts that the Guttmacher Institute obtained for these areas through their national census of abortion providers (12).

§§§§§ In 2008, the abortion counts CDC obtained for Wyoming were <5% of the counts obtained for this state by the Guttmacher Institute through their national census of abortion providers. CDC counts for Arizona, Hawaii, and Louisiana were 45% to 60% of the Guttmacher Institute counts. CDC counts for Colorado, Connecticut, Delaware, Idaho, Illinois, Michigan, Nevada, New Mexico, New York (New York City and New York State combined), Ohio, Oregon, and West Virginia were 65% to <90% of the Guttmacher Institute counts. All other areas with legal reporting requirements that provided data to CDC obtained counts that were at least 90% of the Guttmacher Institute counts (12).

the extent to which the statistics in this report represent all women in the United States, four nationally representative surveys of women obtaining abortions in 1987, 1994–1995, 2001–2002, and 2008 (7–10) have produced percentage distributions for most characteristics that are nearly identical to the percentage distributions reported by CDC. The one exception is the percentage distribution of abortions by race/ethnicity. In particular, the percentage of abortions accounted for by non-Hispanic black women is higher in this report than the percentage based on a recent nationally representative survey of abortion patients (10). Similarly, the greater decrease in abortion rates for non-Hispanic black women compared with women of other racial/ethnic groups based on nationally representative survey data (11) is not supported by the data reported to CDC. These differences likely are attributable both to the comparatively high degree of measurement error for this variable that reduces the reliability of national survey results (10,11) and because the number of states that report to CDC by race/ethnicity continues to be somewhat lower than for other demographic variables. Importantly, some of the reporting areas that have not reported to CDC, or have not reported cross-classified race/ethnicity data (e.g., California, Florida, and Illinois), have large enough populations of minority women that the absence of data from these areas reduces the representativeness of CDC data.

Similar to the case for race/ethnicity, the absence of medical abortion as a specific category on the reporting form used by some states (16) might reduce the precision of CDC's estimates of the use of this method relative to other abortion techniques. Furthermore, even in states with medical abortion on their reporting form, it is possible that this method is disproportionately undercounted: a higher percentage of the abortions provided in physician's offices and smaller caseload facilities are medical abortions (12,61), and these practices might be difficult to locate in the wider medical community without active surveillance efforts (61). Nonetheless, a recent comparison of CDC data with mifepristone sales data^{****} suggests that CDC's Abortion Surveillance System accurately describes the use of medical abortion relative to other abortion methods in the United States (62).

Third, abortion data are compiled and reported to CDC by the central health agency of the reporting area in which the abortion was performed rather than the reporting area in which the woman lived. Thus, the available population (23–32) and birth data (33), which are organized by the states in which

women live, might differ in some cases from the population of women seeking abortions in a given reporting area. This inflates abortion statistics for reporting areas in which a high percentage of abortions are obtained by out-of-state residents and undercounts abortions for states with limited abortion services, more stringent legal requirements for obtaining an abortion, or geographic proximity to services in another state. To adjust for these biases, CDC attempts to categorize abortions by residence in addition to geographic occurrence. However, in 2010, CDC was unable to identify the reporting area, territory, or country of residence for 11.4% of reported abortions.

Finally, adjustments for socioeconomic status cannot be made because CDC does not collect abortion data by education or income, and joint analysis of many variables of interest (e.g., age, race, and ethnicity) is precluded because reporting areas provide CDC with aggregate numbers rather than individual-level records.

Public Health Implications

Ongoing abortion surveillance is important for several reasons. First, abortion surveillance is needed to guide and evaluate programs aimed at preventing unintended pregnancies. Although pregnancy intentions are complex and difficult to assess (63–71), abortion surveillance provides an important measure of pregnancies that are unwanted. Second, routine abortion surveillance is needed to assess changes in clinical practice patterns over time. Information in this report on the prevalence of abortions performed through different methods (e.g., medical or curettage) and at different gestational ages provides the denominator data that are necessary for analyses of the relative safety of abortion practices. Finally, statistics on the number of pregnancies ending in abortion are needed in conjunction with data on births and fetal losses to more accurately estimate the number of pregnancies in the United States and determine rates for various outcomes (e.g., adolescent pregnancy rates) (5,72).

According to the most recent national estimates, 18% of all pregnancies in the United States end in abortion (5). Multiple factors are known to influence the incidence of abortion, including the availability of abortion providers (12,73–75); state regulations, such as mandatory waiting periods (76), parental involvement laws (77), and legal restrictions on abortion providers (78); increasing acceptance of nonmarital childbearing (79,80); shifts in the racial/ethnic composition of the U.S. population (81,82); and changes in the economy and the resulting impact on fertility preferences and access to health-care services, including contraception (83,84). However,

^{****} Because the sole distributor of mifepristone in the United States only sells this medication to licensed physicians, who must sign and return a prescriber's agreement, sales data from this company are not limited by individual state reporting requirements or the difficulties of identifying smaller providers within the wider medical community.

despite these multiple influences, given that unintended pregnancy precedes nearly all abortions (22),***** efforts to reduce the incidence of abortion need to focus on helping women avoid pregnancies that they do not desire.

Providing women and men with the knowledge and resources necessary to make decisions about their sexual behavior and use of contraception can help them avoid unintended pregnancies. However, efforts to improve contraceptive use and reduce the number of unintended pregnancies in the United States have been challenging. Findings from the National Survey of Family Growth (NSFG), the primary national source of data on unintended pregnancy in the United States, suggest that unintended pregnancy decreased during 1982–1995 in conjunction with an increase in contraceptive use among women at risk for unintended pregnancy (85–87). However, data from the 2002 and 2006–2010 NSFGs indicate that contraceptive use among women at risk for unintended pregnancy has decreased (86,88). Moreover, although use of the most effective forms of reversible contraception (i.e., intrauterine devices and hormonal implants), which are as effective as sterilization at preventing unintended pregnancy (89), has increased (88,90), use of these methods in the United States remains among the lowest of any developed country (90), and no additional progress has been made toward reducing unintended pregnancy (41,42,71). Research has shown that providing contraception for women at no cost to them increases use of the most effective methods and can reduce abortion rates (91,92). Removing cost as one barrier for women to the use of the most effective contraceptive methods might be an important way to reduce the number of unintended pregnancies and consequently the number of abortions that are performed in the United States.

*****Recent estimates suggest that intended pregnancies account for <5% of all abortions (22), including those which presumably are performed for maternal medical indications and fetal abnormalities.

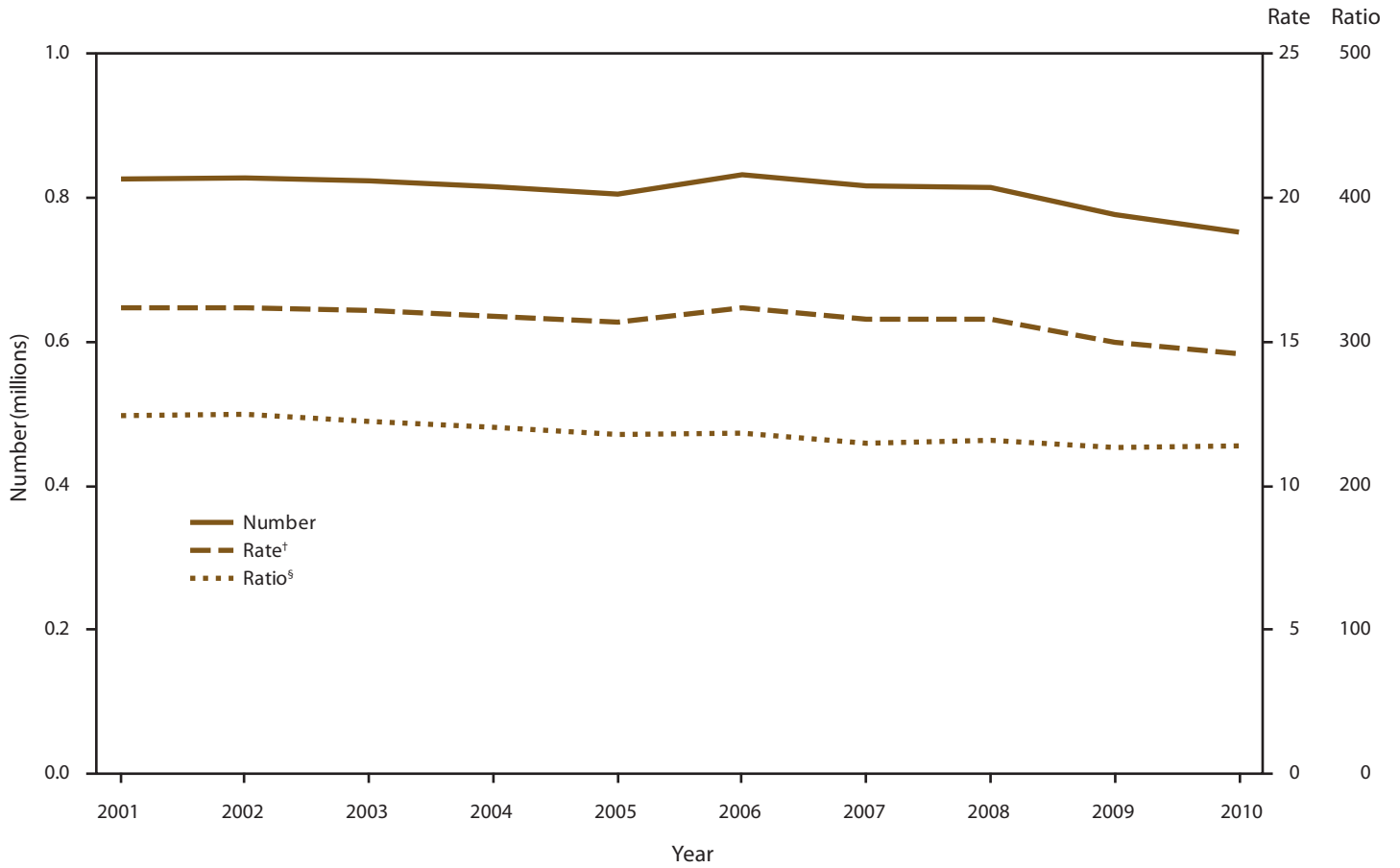
References

- Smith JC. Abortion surveillance report, hospital abortions, annual summary 1969. Atlanta, GA: US Department of Health, Education, and Welfare, Public Health Service, Health Services and Mental Health Administration, National Communicable Disease Center; 1970.
- CDC. Abortion surveillance—United States, 2005. *MMWR* 2008;57 (No. SS-13).
- Henshaw SK, Kost K. Trends in the characteristics of women obtaining abortions, 1974 to 2004. New York: Guttmacher Institute. Available at <http://www.guttmacher.org/pubs/2008/09/23/TrendsWomenAbortions-wTables.pdf>.
- Jones RK, Kost K, Singh S, Henshaw SK, Finer LB. Trends in abortion in the United States. *Clin Obstet Gynecol* 2009;52:119–29.
- Ventura SJ, Curtin SC, Abma JC, Henshaw SK. Estimated pregnancy rates and rates of pregnancy outcomes for the United States, 1990–2008. Hyattsville, MD: US Department of Health and Human Services, CDC, National Center for Health Statistics; 2012. (National vital statistics reports; vol 60, no. 7).
- Ventura SJ, Mosher WD, Curtin SC, Abma JC, Henshaw S. Trends in pregnancies and pregnancy rates by outcome: estimates for the United States, 1976–1996. Hyattsville, MD: US Department of Health and Human Services, CDC, National Center for Health Statistics; 2000. (Vital and health statistics; series 21, no. 56).
- Henshaw SK, Kost K. Abortion patients in 1994–1995: characteristics and contraceptive use. *Fam Plann Perspect* 1996;28:140–7,58.
- Henshaw SK, Silverman J. The characteristics and prior contraceptive use of U.S. abortion patients. *Fam Plann Perspect* 1988;20:158–68.
- Jones RK, Darroch JE, Henshaw SK. Patterns in the socioeconomic characteristics of women obtaining abortions in 2000–2001. *Perspect Sex Reprod Health* 2002;34:226–35.
- Jones RK, Finer LB, Singh S. Characteristics of U.S. abortion patients, 2008. New York: Guttmacher Institute. Available at <http://www.guttmacher.org/pubs/US-Abortion-Patients.pdf>; 2010.
- Jones RK, Kavanaugh ML. Changes in abortion rates between 2000 and 2008 and lifetime incidence of abortion. *Obstet Gynecol* 2011;117:1358–66.
- Jones RK, Kooistra K. Abortion incidence and access to services in the United States, 2008. *Perspect Sex Reprod Health* 2011;43:41–50.
- CDC. Abortion surveillance—United States, 2006. *MMWR* 2009;58 (No. SS-8).
- CDC. Abortion surveillance—United States, 2008. *MMWR* 2011;60 (No. SS-15).
- CDC. Abortion surveillance—United States, 2007. *MMWR* 2011;60 (No. SS-1).
- Guttmacher Institute. State policies in brief: abortion reporting requirements. Available at http://www.guttmacher.org/statecenter/spibs/spib_ARR.pdf.
- Saul R. Abortion reporting in the United States: an examination of the federal-state partnership. *Fam Plann Perspect* 1998;30:244–7.
- American Congress of Obstetricians and Gynecologists Committee. ACOG practice bulletin: clinical management guidelines for obstetrician-gynecologists. *Obstet Gynecol* 2005;106:871–82.
- Paul M, Lichtenberg ES, Borgatta L, Grimes DA, Stubblefield PG, Creinin MD. Management of unintended and abnormal pregnancy: comprehensive abortion care. Oxford: Blackwell Publishing Ltd.; 2009.
- Grimes DA, Schultz KF, Cates W, Jr, Tyler CW. The Joint Program for the Study of Abortion/CDC: A preliminary report. In: Hern WM, Andrikopoulos B, eds. Abortion in the Seventies: Proceedings of the Western Regional Conference on Abortion New York: National Abortion Federation; 1977. p. 41–54.
- Grimes DA, Schulz KF, Cates W, Jr, Tyler CW, Jr. Mid-trimester abortion by dilatation and evacuation: a safe and practical alternative. *N Engl J Med* 1977;296:1141–5.
- Finer LB, Kost K. Unintended pregnancy rates at the state level. *Perspect Sex Reprod Health* 2011;43:78–87.
- CDC. Bridged-race population estimates, April 1, 2010 [File *cen_2000_09_0403_2010.sas7bdat.zip*]. Hyattsville, MD: National Center for Health Statistics. Available at http://www.cdc.gov/nchs/nvss/bridged_race/data_documentation.htm#april2010.
- CDC. Revised bridged-race intercensal population estimates, July 1, 2000–July 2009 [File *icen_2000_09_y01sas.zip*]. Hyattsville, MD: CDC, National Center for Health Statistics; 2012. Available at http://www.cdc.gov/nchs/nvss/bridged_race/data_documentation.htm#july2009.
- CDC. July 1, 2000–July 2009 Revised bridged-race intercensal population estimates, July 1, 2000–July 2009 [File *icen_2000_09_y02sas.zip*]. Hyattsville, MD: CDC, National Center for Health Statistics; 2012. Available at http://www.cdc.gov/nchs/nvss/bridged_race/data_documentation.htm#july2009.
- CDC. Revised bridged-race intercensal population estimates, July 1, 2000–July 2009 [File *icen_2000_09_y03sas.zip*]. Hyattsville, MD: CDC, National Center for Health Statistics; 2012. Available at http://www.cdc.gov/nchs/nvss/bridged_race/data_documentation.htm#july2009.
- CDC. Revised bridged-race intercensal population estimates, July 1, 2000–July 2009 [File *icen_2000_09_y04sas.zip*]. Hyattsville, MD: CDC, National Center for Health Statistics; 2012. Available at http://www.cdc.gov/nchs/nvss/bridged_race/data_documentation.htm#july2009.

28. CDC. Revised bridged-race intercensal population estimates, July 1, 2000–July 2009 [File icen_2000_09_y05sas.zip]. Hyattsville, MD: CDC, National Center for Health Statistics; 2012. Available at http://www.cdc.gov/nchs/nvss/bridged_race/data_documentation.htm#july2009.
29. CDC. Revised bridged-race intercensal population estimates, July 1, 2000–July 2009 [File icen_2000_09_y06sas.zip]. Hyattsville, MD: CDC, National Center for Health Statistics; 2012. Available at http://www.cdc.gov/nchs/nvss/bridged_race/data_documentation.htm#july2009.
30. CDC. Revised bridged-race intercensal population estimates, July 1, 2000–July 2009 [File icen_2000_09_y07sas.zip]. Hyattsville, MD: CDC, National Center for Health Statistics; 2012. Available at http://www.cdc.gov/nchs/nvss/bridged_race/data_documentation.htm#july2009.
31. CDC. Revised bridged-race intercensal population estimates, July 1, 2000–July 2009 [File icen_2000_09_y08sas.zip]. Hyattsville, MD: CDC, National Center for Health Statistics; 2012. Available at http://www.cdc.gov/nchs/nvss/bridged_race/data_documentation.htm#july2009.
32. CDC. Revised bridged-race intercensal population estimates, July 1, 2000–July 2009 [File icen_2000_09_y09sas.zip]. Hyattsville, MD: CDC, National Center for Health Statistics; 2012. Available at http://www.cdc.gov/nchs/nvss/bridged_race/data_documentation.htm#july2009.
33. CDC. VitalStats—births, birth data files. Available at http://www.cdc.gov/nchs/data_access/vitalstats/VitalStats_Births.htm.
34. CDC. Abortion surveillance, 1972. Atlanta, GA: US Department of Health, Education, and Welfare, Public Health Service, CDC; 1974.
35. CDC. Abortion surveillance—United States, 2009. *MMWR* 2012; 61(No. SS-8).
36. CDC. Abortion surveillance, 1977. Atlanta, GA: US Department of Health, Education, and Welfare, Public Health Service, CDC; 1979.
37. CDC. Pregnancy mortality surveillance in the United States. 2011. Available at <http://www.cdc.gov/reproductivehealth/MaternalInfantHealth/Pregnancy-relatedMortality.htm>.
38. Hoyert D. Maternal mortality and related concepts. *National Center for Health Statistics. Vital Health Stat* 2007;3:33.
39. Martin JA, Hamilton BE, Ventura SJ, Osterman MJK, Wilson EC, Mathews TS. Births: final data for 2010. *National Vital Statistics Report* 2011;61:1.
40. Martin JA, Hamilton BE, Ventura SJ, Osterman MJK, Kirmeyer S, Mathews TS, et al. Births: final data for 2009. *National Vital Statistics Report* 2011;60:1.
41. Finer LB, Zolna MR. Unintended pregnancy in the United States: incidence and disparities, 2006. *Contraception* 2011;84:478–85.
42. Finer LB, Henshaw SK. Disparities in rates of unintended pregnancy in the United States, 1994 and 2001. *Perspect Sex Reprod Health* 2006;38:90–6.
43. Lichtenberg ES, Paul M. Surgical abortion prior to 7 weeks of gestation. *Contraception* 2013;88:7–17.
44. Ferris LE, McMain-Klein M, Colodny N, Fellows GF, Lamont J. Factors associated with immediate abortion complications. *CMAJ* 1996;154:1677–85.
45. Buehler JW, Schulz KF, Grimes DA, Hogue CJ. The risk of serious complications from induced abortion: do personal characteristics make a difference? *Am J Obstet Gynecol* 1985;153:14–20.
46. Bartlett LA, Berg CJ, Shulman HB, et al. Risk factors for legal induced abortion-related mortality in the United States. *Obstet Gynecol* 2004;103:729–37.
47. Andersen K, Ganatra B, Stucke S, Basnett I, Karki YB, Thapa K. A prospective study of complications from comprehensive abortion care services in Nepal. *BMC Public Health* 2012;12:9.
48. Kiley JW, Yee LM, Niemi CM, Feinglass JM, Simon MA. Delays in request for pregnancy termination: comparison of patients in the first and second trimesters. *Contraception* 2010;81:446–51.
49. Jones RK, Finer LB. Who has second-trimester abortions in the United States? *Contraception* 2012;85:544–51.
50. Joyce T, Kaestner R. The impact of Mississippi's mandatory delay law on the timing of abortion. *Fam Plann Perspect* 2000;32:4–13.
51. Finer LB, Frohvirth LF, Dauphinee LA, Singh S, Moore AM. Timing of steps and reasons for delays in obtaining abortions in the United States. *Contraception* 2006;74:334–44.
52. Drey EA, Foster DG, Jackson RA, Lee SJ, Cardenas LH, Darney PD. Risk factors associated with presenting for abortion in the second trimester. *Obstet Gynecol* 2006;107:128–35.
53. Kaunitz AM, Rovira EZ, Grimes DA, Schulz KF. Abortions that fail. *Obstet Gynecol* 1985;66:533–7.
54. Edwards J, Carson SA. New technologies permit safe abortion at less than six weeks' gestation and provide timely detection of ectopic gestation. *Am J Obstet Gynecol* 1997;176:1101–6.
55. Paul ME, Mitchell CM, Rogers AJ, Fox MC, Lackie EG. Early surgical abortion: efficacy and safety. *Am J Obstet Gynecol* 2002;187:407–11.
56. Creinin MD, Edwards J. Early abortion: surgical and medical options. *Curr Probl Obstet Gynecol Fertil* 1997;20:1–32.
57. Paul M, Stein T. Abortion. In: Hatcher RA, Trussell J, Nelson AL, Cates W, Kowal D, Polcar MS, eds. *Contraceptive technology*, 20th ed. Atlanta, GA: Ardent Media, Inc; 2011:695–727.
58. Finer LB, Wei J. Effect of mifepristone on abortion access in the United States. *Obstet Gynecol* 2009;114:623–30.
59. Guttmacher Institute. State data center, trend data, abortions by state of occurrence. New York, NY: Guttmacher Institute; 2012. Available at <http://www.guttmacher.org/datacenter/trend.jsp#>.
60. Pazol K. Abortion surveillance in the United States: Future directions and challenges. Paper presented at the annual meeting of the National Association for Public Health Statistics and Information Systems. St. Louis, MO; 2010. Available at <http://www.docstoc.com/docs/114894675/Abortion-Surveillance-in-the-United-States2010>.
61. Yunzal-Butler C, Sackoff J, Li W. Medication abortions among New York City residents, 2001–2008. *Perspect Sex Reprod Health* 2011;43:218–23.
62. Pazol K, Creanga AA, Zane SB. Trends in use of medical abortion in the United States: reanalysis of surveillance data from the Centers for Disease Control and Prevention, 2001–2008. *Contraception* 2012;86:746–51.
63. Bachrach CA, Newcomer S. Intended pregnancies and unintended pregnancies: distinct categories or opposite ends of a continuum? *Fam Plann Perspect* 1999;31:251–2.
64. Dott M, Rasmussen SA, Hogue CJ, Reefhuis J. Association between pregnancy intention and reproductive-health related behaviors before and after pregnancy recognition, National Birth Defects Prevention Study, 1997–2002. *Matern Child Health J* 2010;14:373–81.
65. Klerman LV. The intendedness of pregnancy: a concept in transition. *Matern Child Health J* 2000;4:155–62.
66. Lifflander A, Gaydos LM, Hogue CJ. Circumstances of pregnancy: low income women in Georgia describe the difference between planned and unplanned pregnancies. *Matern Child Health J* 2007;11:81–9.
67. Sable MR, Wilkinson DS. Pregnancy intentions, pregnancy attitudes, and the use of prenatal care in Missouri. *Matern Child Health J* 1998;2:155–65.
68. Santelli J, Rochat R, Hatfield-Timajchy K, et al. The measurement and meaning of unintended pregnancy. *Perspect Sex Reprod Health* 2003; 35:94–101.
69. Santelli JS, Lindberg LD, Orr MG, Finer LB, Speizer I. Toward a multidimensional measure of pregnancy intentions: evidence from the United States. *Stud Fam Plann* 2009;40:87–100.
70. Trussell J, Vaughan B, Stanford J. Are all contraceptive failures unintended pregnancies? Evidence from the 1995 National Survey of Family Growth. *Fam Plann Perspect* 1999;31:246–7, 60.
71. Mosher WD, Jones J, Abma JC. Intended and unintended births in the United States: 1982–2010. *National Health Statistics Reports* 2012;55.
72. Ventura SJ, Abma JC, Mosher WD, Henshaw SK. Estimated pregnancy rates by outcome for the United States, 1990–2004. *National Vital Statistics Report* 2008; 56:15.
73. Finer LB, Henshaw SK. Abortion incidence and services in the United States in 2000. *Perspect Sex Reprod Health* 2003;35:6–15.
74. Henshaw SK. Abortion incidence and services in the United States, 1995–1996. *Fam Plann Perspect* 1998;30:263–70,87.

75. Jones RK, Zolna MR, Henshaw SK, Finer LB. Abortion in the United States: incidence and access to services, 2005. *Perspect Sex Reprod Health* 2008;40:6–16.
76. Joyce TJ, Henshaw SK, Dennis A, Finer LB, Blanchard K. The impact of state mandatory counseling and waiting period laws on abortion: a literature review. New York, NY: Guttmacher Institute; 2009. Available at <http://www.guttmacher.org/pubs/MandatoryCounseling.pdf>.
77. Dennis A, Henshaw SK, Joyce TJ, Finer LB, Blanchard K. The impact of laws requiring parental involvement for abortion: a literature review. New York, NY: Guttmacher Institute; 2009. Available at <http://www.guttmacher.org/pubs/ParentalInvolvementLaws.pdf>.
78. Joyce T. The supply-side economics of abortion. *N Engl J Med* 2011; 365:1466–9.
79. Martinez GM, Chandra A, Abma JC, Jones J, Mosher WD. Fertility, contraception, and fatherhood: data on men and women from Cycle 6 (2002) of the National Survey of Family Growth. *Vital and Health Statistics* 2006;23:26.
80. Ventura SJ. Changing patterns of nonmarital childbearing in the United States. Hyattsville, MD: US Department of Health and Human Services, CDC, National Center for Health Statistics; 2009. (NCHS data brief, no. 18).
81. Moore KA. Teen births: examining the recent increase. Washington DC: The National Campaign to Prevent Teen and Unplanned Pregnancy; 2009. Available at http://www.childtrends.org/Files/Child_Trends_2009_03_13_FS_TeenBirthRate.pdf.
82. Yang Z, Gaydos LM. Reasons for and challenges of recent increases in teen birth rates: a study of family planning service policies and demographic changes at the state level. *J Adolesc Health* 2010;46:517–24.
83. Henshaw SK. Unintended pregnancy in the United States. *Fam Plann Perspect* 1998;30:24–9,46.
84. American College of Obstetricians and Gynecologists. Bad economy blamed for women delaying pregnancy and annual check-up. Available at http://www.acog.org/About_ACOG/news_room/news_releases/2009/bad_economy_blamed_for_women_delaying_pregnancy_and_annual_check-up.
85. Guttmacher Institute. A real-time look at the impact of the recession on women's family planning and pregnancy decisions. New York, NY: Guttmacher Institute; 2009. Available at <http://www.guttmacher.org/pubs/RecessionFP.pdf>.
86. Henshaw SK. Unintended pregnancy in the United States. *Fam Plann Perspect* 1998;30:24–9,46.
87. Piccinino LJ, Mosher WD. Trends in contraceptive use in the United States: 1982-1995. *Fam Plann Perspect* 1998;30:4-10,46.
88. Mosher WD, Martinez GM, Chandra A, Abma JC, Willson SJ. Use of contraception and use of family planning services in the United States: 1982–2002. Hyattsville, Maryland: US Department of Health and Human Services, CDC, National Center for Health Statistics; 2004. (Advance data from vital and health statistics; no. 350).
89. Piccinino LJ, Mosher WD. Trends in contraceptive use in the United States: 1982-1995. *Fam Plann Perspect* 1998;30:4-10,46.
90. Jones J, Mosher WD, Daniels K. Current contraceptive use in the United States, 2006-2010, and changes in patterns of use since 1995. *Natl Vital Stat Rep* 2012;60.
91. Trussell J. Contraceptive efficacy. In: Hatcher RA, Trussell J, Nelson AL, Cates W, Kowal D, Policar MS, eds. *Contraceptive technology*, 20th ed. Atlanta, GA: Ardent Media, Inc; 2011. p. 779-88.
92. Finer LB, Jerman J, Kavanaugh ML. Changes in use of long-acting contraceptive methods in the United States, 2007-2009. *Fertil Steril* 2012;98:893-7.
93. Peipert JF, Madden T, Allsworth JE, Secura GM. Preventing unintended pregnancies by providing no-cost contraception. *Obstet Gynecol* 2012; 120:1291-7.
94. Secura GM, Allsworth JE, Madden T, Mullersman JL, Peipert JF. The Contraceptive CHOICE Project: reducing barriers to long-acting reversible contraception. *Am J Obstet Gynecol* 2010;203:115.e1-7.

FIGURE 1. Number, rate, and ratio of abortions performed, by year — selected reporting areas,* United States, 2001–2010

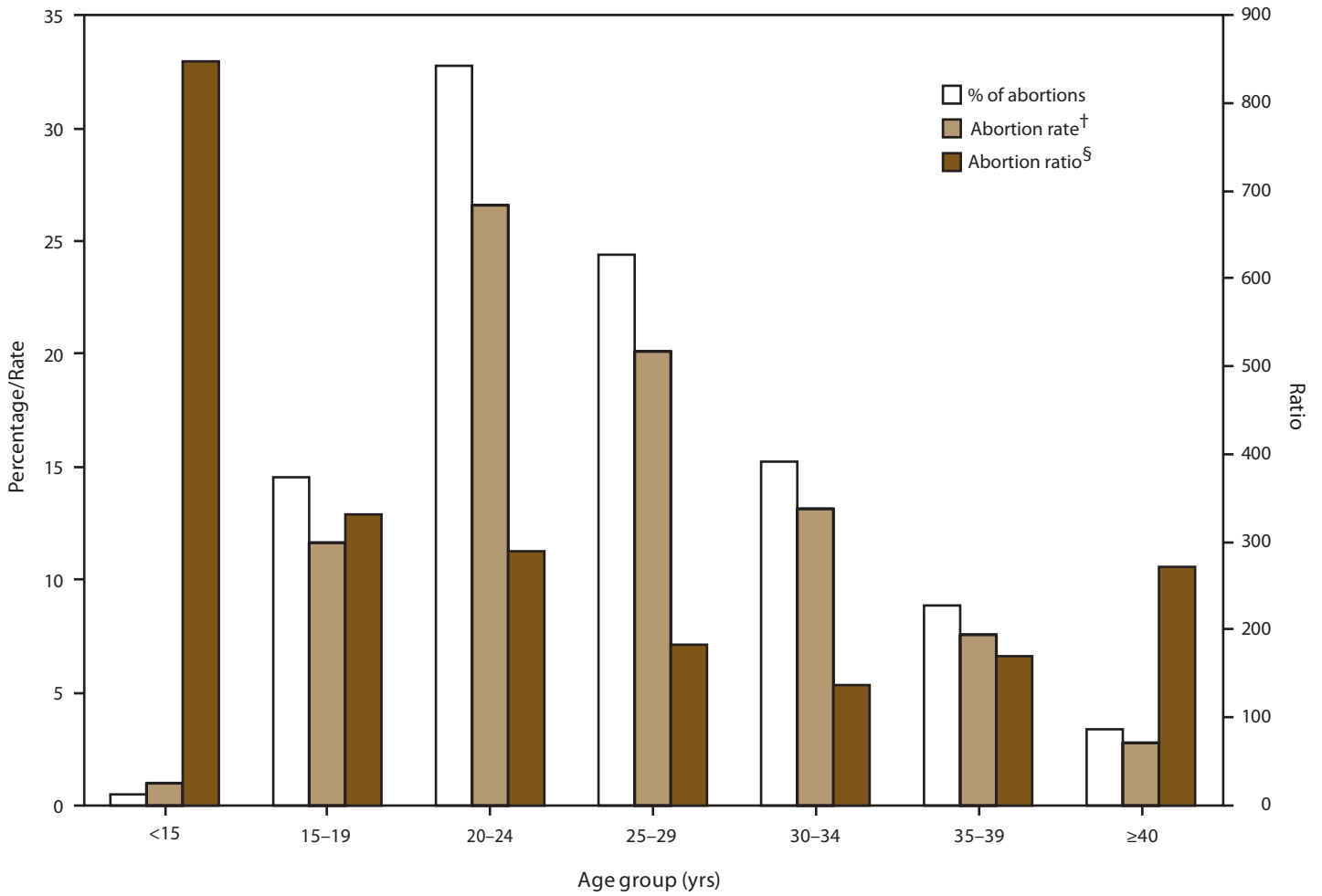


* Data are for 46 reporting areas; excludes Alaska, California, Louisiana, Maryland, New Hampshire, and West Virginia.

† Number of abortions per 1,000 women aged 15-44 years.

‡ Number of abortions per 1,000 live births.

FIGURE 2. Percentage distribution of total abortions, abortion rate, and abortion ratio, by age group of women who obtained a legal abortion — selected reporting areas,* United States, 2010

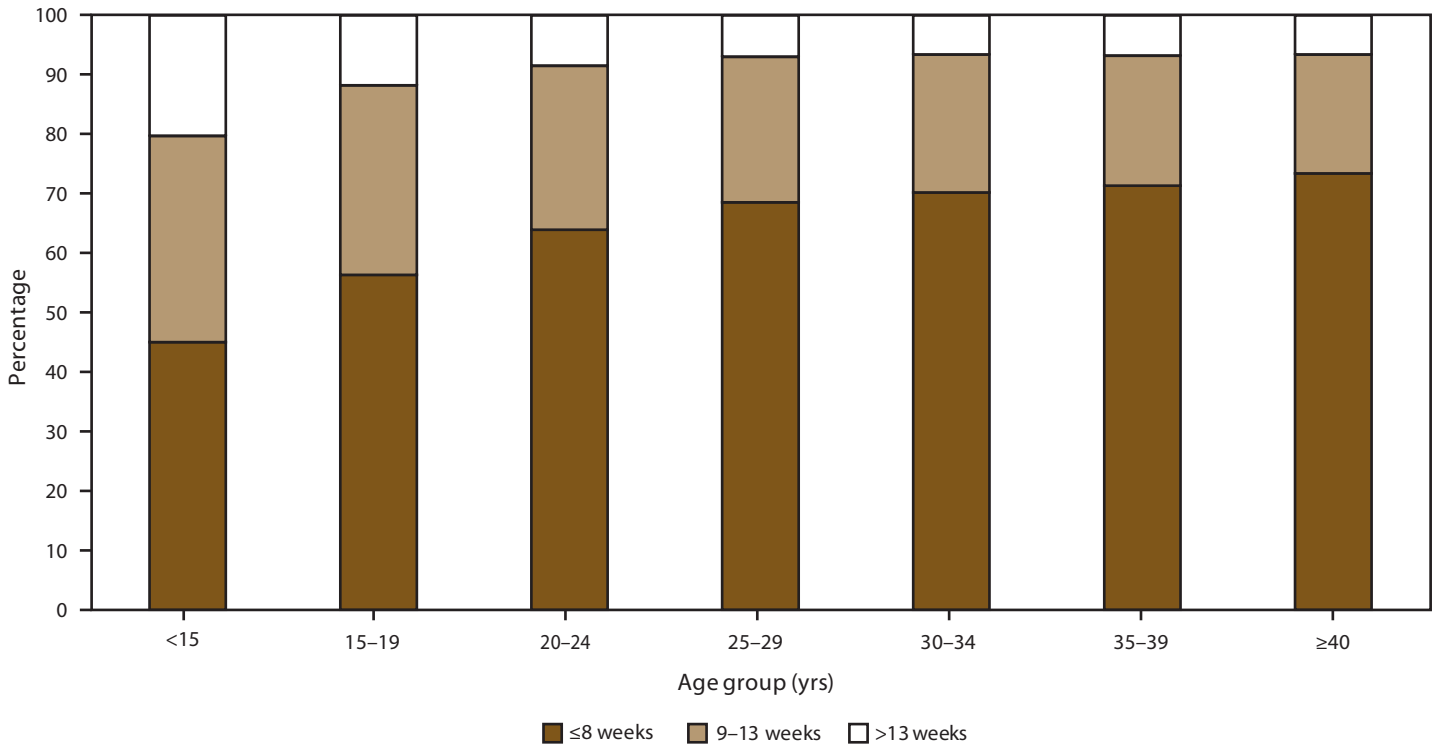


* Data are for 46 areas; excludes California, Florida, Maryland, New Hampshire, Vermont and Wyoming.

[†] Number abortions per 1,000 women aged 15-44 years.

[§] Number abortions per 1,000 live births.

FIGURE 3. Percentage* distribution of gestational ages at time of abortion, by age group of women — selected reporting areas,† United States, 2010



* Based on the total number of abortions reported with known weeks of gestation.

† Data from 36 reporting areas; excludes California, Connecticut, Delaware, Florida, Illinois, Kentucky, Maryland, Massachusetts, Mississippi, Nebraska, New Hampshire, New York State, Pennsylvania, Vermont, Wisconsin and Wyoming.

TABLE 1. Number, rate,* and ratio[†] of reported abortions — selected reporting areas, United States, 2001–2010

Year	All reporting areas [§]		Continuously reporting areas [¶]		
	No.	No.	%**	Rate	Ratio
2001	853,485	826,719	96.9	16.2	249
2002	854,122	828,027	96.9	16.2	250
2003	848,163	824,230	97.2	16.1	245
2004	839,226	815,969	97.2	15.9	241
2005	820,151	805,725	98.2	15.7	236
2006	852,385 ^{††}	832,692	97.7	16.2	237
2007	827,609	817,222	98.7	15.8	230
2008	825,564	815,006	98.7	15.8	232
2009	789,116 ^{§§}	777,239	98.5	15.0	227
2010	765,651	753,065	98.4	14.6	228

* Number of abortions per 1,000 women aged 15–44 years.

[†] Number of abortions per 1,000 live births.

[§] Excludes states that did not report abortion numbers to CDC: Alaska (2001–2002), California (2001–2010), Louisiana (2005), Maryland (2007–2010), New Hampshire (2001–2010), and West Virginia (2003–2004).

[¶] Only includes areas that reported abortion counts every year during the period of analysis (2001–2010).

** Abortions from areas that reported every year during 2001–2010 as a percentage of all reported abortions.

^{††} This number is greater than reported in the 2006 report because of numbers subsequently provided by Louisiana.

^{§§} This number is greater than reported in the 2009 report because of numbers subsequently provided by Delaware.

Surveillance Summaries

TABLE 2. Number, rate,* and ratio† of reported abortions, by reporting area of residence and occurrence and by percentage of abortions obtained by out-of-state residents — United States, 2010

State/Area	Residence			Occurrence			% obtained by out-of-state residents [§]
	No.	Rate	Ratio	No.	Rate	Ratio	
Alabama	9,601	10.0	160	10,280	10.7	171	16.5
Alaska	1,837	12.8	160	1,715	12.0	150	0.7
Arizona	11,342	9.0	130	11,438	9.1	131	0.7
Arkansas	4,849	8.5	126	4,532	8.0	118	13.1
California [¶]	—	—	—	—	—	—	—
Colorado	10,207	10.0	154	11,210	10.9	169	9.4
Connecticut	13,379	19.4	355	13,438	19.4	356	3.0
Delaware	3,790	21.1	334	4,666	26.0	411	23.8
District of Columbia**	1,657	10.2	181	2,896	17.8	316	52.4
Florida ^{††}	—	—	—	79,908	22.4	372	—
Georgia	31,486	15.2	235	34,585	16.7	258	10.2
Hawaii	3,063	11.7	161	3,064	11.7	161	0.4
Idaho	2,147	7.0	93	1,510	4.9	65	5.0
Illinois	39,491	15.0	239	41,859	15.9	253	7.3
Indiana	11,043	8.6	132	10,048	7.8	120	4.7
Iowa ^{§§}	4,643	8.1	120	5,399	9.4	139	18.5
Kansas	4,498	8.1	111	8,333	15.0	205	49.8
Kentucky	5,590	6.5	100	3,929	4.6	70	12.6
Louisiana ^{§§}	7,998	8.6	128	8,872	9.6	142	3.2
Maine	2,386	9.9	184	2,311	9.6	178	2.5
Maryland [¶]	—	—	—	—	—	—	—
Massachusetts ^{§§}	20,263	15.0	278	20,802	15.4	285	3.5
Michigan	23,152	12.1	202	23,307	12.1	203	2.4
Minnesota	11,033	10.6	161	11,505	11.0	168	8.1
Mississippi	5,861	9.7	146	2,297	3.8	57	2.0
Missouri	12,122	10.3	158	6,163	5.2	80	8.6
Montana	1,920	10.7	159	2,160	12.0	179	12.4
Nebraska	2,277	6.4	88	2,464	6.9	95	11.0
Nevada	7,167	13.0	199	7,787	14.2	217	6.0
New Hampshire [¶]	—	—	—	—	—	—	—
New Jersey ^{¶¶}	28,991	16.7	271	28,217	16.2	264	5.1
New Mexico	5,193	13.0	186	4,779	12.0	172	6.3
New York	111,848	27.6	458	115,724	28.6	474	3.3
New York City	—	—	—	83,750	43.8	694	7.9
New York State	—	—	—	31,974	15.0	259	4.7
North Carolina	26,050	13.4	213	30,952	15.9	253	18.3
North Dakota	973	7.5	106	1,291	10.0	142	31.2
Ohio	27,038	12.1	194	28,123	12.6	202	6.4
Oklahoma	6,232	8.5	117	6,097	8.3	115	7.5
Oregon	9,278	12.3	204	9,990	13.2	219	10.4
Pennsylvania	37,247	15.2	260	36,778	15.1	257	4.2
Rhode Island	3,971	18.5	355	4,181	19.5	374	19.5
South Carolina	11,991	12.9	206	6,464	7.0	111	4.1
South Dakota	797	5.2	67	737	4.8	62	13.6
Tennessee	13,310	10.4	167	16,373	12.8	206	24.5
Texas	75,151	14.1	195	77,463	14.5	201	3.1
Utah	3,598	6.0	69	3,780	6.3	72	8.8
Vermont	1,260	10.7	202	1,333	11.3	214	7.0
Virginia	25,885	15.7	251	25,943	15.7	252	7.1
Washington	21,117	15.6	244	21,124	15.6	244	4.8
West Virginia	2,323	6.8	113	1,999	5.8	98	12.5
Wisconsin	8,816	8.0	129	7,825	7.1	114	3.0
Wyoming	734	6.9	97	—***	—†††	—†††	0.0
Canada	137	NA	NA	NA	NA	NA	NA
Mexico	481	NA	NA	NA	NA	NA	NA
Other country or territory	225	NA	NA	NA	NA	NA	NA

See table footnotes on page 20.

TABLE 2. (Continued) Number, rate,* and ratio[†] of reported abortions, by reporting area of residence and occurrence and by percentage of abortions obtained by out-of-state residents — United States, 2010

State/Area	Residence			Occurrence			% obtained by out-of-state residents [§]
	No.	Rate	Ratio	No.	Rate	Ratio	
Total Known	678,656	NA	NA	NA	NA	NA	8.1
Percentage reported by known residence	88.6	NA	NA	NA	NA	NA	NA
Total unknown residence	86,995	NA	NA	NA	NA	NA	NA
Out of state, exact residence not stated	3,099	NA	NA	NA	NA	NA	NA
No information provided on residence	83,896	NA	NA	NA	NA	NA	NA
Percentage reported by unknown residence	11.4	NA	NA	NA	NA	NA	NA
Total	765,651	NA	NA	NA	NA	NA	NA

Abbreviation: NA = not applicable.

* Number of abortions per 1,000 women aged 15—44 years.

† Number of abortions per 1,000 live births.

§ Additional details on the state in which abortions were provided, cross-tabulated by the state of maternal residence, are available at http://www.cdc.gov/reproductivehealth/data_stats/Abortion.htm.

¶ State did not report; because numbers for this state are available only from other states where residents obtained abortions, meaningful figures cannot be reported.

** Because reporting is not mandatory, a complete count of abortions performed in the District of Columbia could not be obtained.

†† State reported by occurrence only; because abortions by residence for this state are available only from other states where residents obtained abortions, meaningful figures cannot be reported.

§§ State reported abortion numbers for both in-state and out-of-state residents; for out-of-state residents, the state or area of residence was not provided.

¶¶ Data from hospitals and licensed ambulatory care facilities only; because reporting is not mandatory for private physicians and women's centers, a complete count of abortions performed in New Jersey could not be obtained.

*** Total abortion count ≤20.

††† Abortion rates and ratios were not calculated for Wyoming because results based on a small number of abortions are unstable.

TABLE 3. Reported abortions, by known age group and reporting area of occurrence — selected reporting areas,* United States, 2010

State/Area	<15		15-19		20-24		25-29		30-34		35-39		≥40		Total abortions reported by known age	% of all reported abortions [§]
	No.	(%) [†]	No.	(%)	No.	(%)	No.	(%)	No.	(%)	No.	(%)	No.	(%)	No.	
Alabama	89	(0.9)	1,559	(15.2)	3,611	(35.1)	2,583	(25.1)	1,488	(14.5)	730	(7.1)	219	(2.1)	10,279	(100.0)
Alaska	— [¶]	—	339	(19.8)	585	(34.3)	395	(23.1)	221	(12.9)	122	(7.1)	—	—	1,708	(99.6)
Arizona	46	(0.4)	1,513	(13.4)	3,774	(33.5)	2,707	(24.0)	1,748	(15.5)	1,083	(9.6)	392	(3.5)	11,263	(98.5)
Arkansas	28	(0.6)	722	(15.9)	1,455	(32.1)	1,083	(23.9)	717	(15.8)	392	(8.7)	131	(2.9)	4,528	(99.9)
Colorado	51	(0.5)	1,675	(15.0)	3,800	(33.9)	2,706	(24.2)	1,552	(13.9)	997	(8.9)	416	(3.7)	11,197	(99.9)
Connecticut	57	(0.4)	2,103	(16.0)	4,372	(33.2)	3,259	(24.7)	1,871	(14.2)	1,069	(8.1)	447	(3.4)	13,178	(98.1)
Delaware	21	(0.5)	774	(16.6)	1,551	(33.2)	1,126	(24.1)	663	(14.2)	386	(8.3)	145	(3.1)	4,666	(100.0)
District of Columbia**	18	(0.6)	487	(16.8)	921	(31.8)	699	(24.2)	421	(14.5)	253	(8.7)	95	(3.3)	2,894	(99.9)
Georgia	218	(0.6)	4,535	(13.1)	10,826	(31.3)	8,722	(25.2)	5,787	(16.7)	3,414	(9.9)	1,083	(3.1)	34,585	(100.0)
Hawaii	11	(0.4)	547	(17.9)	1,023	(33.4)	716	(23.4)	418	(13.7)	243	(7.9)	104	(3.4)	3,062	(99.9)
Idaho	6	(0.4)	246	(16.3)	509	(33.7)	335	(22.2)	251	(16.6)	121	(8.0)	42	(2.8)	1,510	(100.0)
Illinois ^{††}	229	(0.6)	6,359	(16.6)	11,891	(31.0)	9,222	(24.1)	5,924	(15.5)	3,407	(8.9)	1,290	(3.4)	38,322	(99.2)
Indiana	51	(0.5)	1,475	(14.7)	3,371	(33.6)	2,442	(24.4)	1,498	(14.9)	891	(8.9)	299	(3.0)	10,027	(99.8)
Iowa	27	(0.5)	863	(16.0)	1,801	(33.5)	1,289	(23.9)	753	(14.0)	466	(8.7)	185	(3.4)	5,384	(99.7)
Kansas	38	(0.5)	1,127	(13.5)	2,804	(33.6)	2,112	(25.3)	1,276	(15.3)	724	(8.7)	252	(3.0)	8,333	(100.0)
Kentucky	23	(0.6)	589	(15.0)	1,273	(32.4)	905	(23.0)	624	(15.9)	373	(9.5)	142	(3.6)	3,929	(100.0)
Louisiana	70	(0.8)	1,261	(14.4)	3,061	(34.9)	2,235	(25.5)	1,274	(14.5)	621	(7.1)	237	(2.7)	8,759	(98.7)
Maine	11	(0.5)	375	(16.2)	781	(33.8)	552	(23.9)	324	(14.0)	186	(8.1)	81	(3.5)	2,310	(100.0)
Massachusetts	55	(0.3)	2,806	(13.5)	7,027	(33.8)	5,034	(24.2)	3,020	(14.5)	1,972	(9.5)	888	(4.3)	20,802	(100.0)
Michigan	113	(0.5)	3,909	(16.8)	7,823	(33.6)	5,280	(22.7)	3,373	(14.5)	2,069	(8.9)	726	(3.1)	23,293	(99.9)
Minnesota	48	(0.4)	1,433	(12.5)	3,921	(34.1)	2,898	(25.2)	1,791	(15.6)	999	(8.7)	415	(3.6)	11,505	(100.0)
Mississippi	14	(0.6)	330	(14.4)	829	(36.1)	620	(27.0)	306	(13.3)	157	(6.8)	39	(1.7)	2,295	(99.9)
Missouri	23	(0.4)	936	(15.2)	2,176	(35.3)	1,496	(24.3)	840	(13.6)	518	(8.4)	174	(2.8)	6,163	(100.0)
Montana	11	(0.5)	341	(15.8)	760	(35.2)	509	(23.6)	291	(13.5)	178	(8.2)	70	(3.2)	2,160	(100.0)
Nebraska	15	(0.6)	344	(14.0)	881	(35.8)	581	(23.6)	340	(13.8)	221	(9.0)	82	(3.3)	2,464	(100.0)
Nevada	28	(0.4)	1,063	(14.1)	2,284	(30.3)	1,823	(24.2)	1,294	(17.2)	755	(10.0)	290	(3.8)	7,537	(96.8)
New Jersey ^{§§}	114	(0.4)	4,079	(14.5)	9,105	(32.3)	6,856	(24.3)	4,386	(15.5)	2,614	(9.3)	1,063	(3.8)	28,217	(100.0)
New Mexico	28	(0.6)	840	(17.9)	1,586	(33.8)	1,074	(22.9)	665	(14.2)	354	(7.5)	147	(3.1)	4,694	(98.2)
New York	568	(0.5)	17,868	(15.5)	35,999	(31.3)	27,996	(24.3)	18,178	(15.8)	10,339	(9.0)	4,134	(3.6)	115,082	(99.4)
New York City	431	(0.5)	12,139	(14.5)	24,898	(29.8)	20,707	(24.8)	14,009	(16.8)	8,047	(9.6)	3,199	(3.8)	83,430	(99.6)
New York State	137	(0.4)	5,729	(18.1)	11,101	(35.1)	7,289	(23.0)	4,169	(13.2)	2,292	(7.2)	935	(3.0)	31,652	(99.0)
North Carolina	148	(0.5)	4,230	(14.1)	10,167	(33.9)	7,289	(24.3)	4,635	(15.5)	2,610	(8.7)	882	(2.9)	29,961	(96.8)
North Dakota	—	—	197	(15.3)	488	(37.8)	322	(24.9)	164	(12.7)	79	(6.1)	—	—	1,291	(100.0)
Ohio	182	(0.7)	4,509	(16.2)	9,562	(34.3)	6,636	(23.8)	3,937	(14.1)	2,244	(8.1)	795	(2.9)	27,865	(99.1)
Oklahoma	29	(0.5)	913	(15.1)	1,979	(32.7)	1,515	(25.0)	909	(15.0)	511	(8.4)	194	(3.2)	6,050	(99.2)
Oregon	34	(0.3)	1,436	(14.4)	3,200	(32.2)	2,460	(24.7)	1,544	(15.5)	913	(9.2)	354	(3.6)	9,941	(99.5)
Pennsylvania	190	(0.5)	5,728	(15.6)	12,930	(35.2)	8,522	(23.2)	5,258	(14.3)	2,999	(8.2)	1,140	(3.1)	36,767	(100.0)
Rhode Island	22	(0.5)	684	(16.4)	1,452	(34.7)	967	(23.1)	567	(13.6)	346	(8.3)	143	(3.4)	4,181	(100.0)
South Carolina	24	(0.4)	1,052	(16.3)	2,119	(32.8)	1,551	(24.0)	944	(14.6)	576	(8.9)	196	(3.0)	6,462	(100.0)
South Dakota	5	(0.7)	106	(14.4)	279	(37.9)	178	(24.2)	102	(13.8)	50	(6.8)	17	(2.3)	737	(100.0)
Tennessee	91	(0.6)	2,277	(14.0)	5,597	(34.4)	4,025	(24.7)	2,500	(15.4)	1,327	(8.2)	461	(2.8)	16,278	(99.4)
Texas	183	(0.2)	8,661	(11.2)	25,399	(32.8)	20,487	(26.5)	12,536	(16.2)	7,222	(9.3)	2,925	(3.8)	77,413	(99.9)
Utah	20	(0.5)	480	(12.8)	1,174	(31.4)	923	(24.7)	605	(16.2)	374	(10.0)	163	(4.4)	3,739	(98.9)
Virginia	69	(0.3)	3,145	(12.2)	8,349	(32.5)	6,548	(25.5)	4,167	(16.2)	2,430	(9.5)	990	(3.9)	25,698	(99.1)
Washington	77	(0.4)	3,350	(15.9)	6,882	(32.6)	5,093	(24.1)	3,004	(14.2)	1,903	(9.0)	799	(3.8)	21,108	(99.9)
West Virginia	15	(0.8)	312	(15.6)	681	(34.1)	471	(23.6)	317	(15.9)	157	(7.9)	46	(2.3)	1,999	(100.0)
Wisconsin ^{††}	50	(0.7)	1,120	(14.8)	2,598	(34.2)	1,798	(23.7)	1,118	(14.7)	687	(9.1)	220	(2.9)	7,591	(100.0)
Total	3,155	(0.5)	98,698	(14.6)	222,656	(32.9)	166,040	(24.5)	103,601	(15.3)	60,082	(8.9)	22,995	(3.4)	677,227	(99.5)^{†††}
Abortion rate^{¶¶}	1.0		11.7		26.7		20.2		13.2		7.6		2.8		13.8	
Abortion ratio^{***}	851		333		291		184		138		171		273		215	

* Data from 46 reporting areas; excludes six states (California, Florida, Maryland, New Hampshire, Vermont, and Wyoming) that did not report, did not report by age, or did not meet reporting standards.

† Percentages for the individual component categories might not add to 100 because of rounding.

§ Calculated as the number of abortions reported by known age divided by the sum of abortions reported by known and unknown age.

¶ Cell details not displayed because of small numbers (N = 1–4).

** Because reporting is not mandatory, information could not be obtained for all abortions performed in the District of Columbia.

†† Includes residents only.

§§ Data from hospitals and licensed ambulatory care facilities only; because reporting is not mandatory for private physicians and women's centers, information could not be obtained for all abortions performed in New Jersey.

¶¶ Number of abortions obtained by women in a given age group per 1,000 women in that same age group. Women aged 13–14 years were used as the denominator for the group of women aged <15 years, and women aged 40–44 years were used as the denominator for the group of women aged ≥40 years. Women aged 15–44 years were used as the denominator for the overall rate. For each state, abortions for women of unknown age were distributed according to the distribution of abortions among women of known age for that state.

*** Number of abortions obtained by women in a given age group per 1,000 live births to women in that same age group. For each state, abortions for women of unknown age were distributed according to the distribution of abortions among women of known age for that state.

††† Percentage based on a total of 680,939 abortions reported among the areas that met reporting standards for age.

TABLE 4. Reported abortions, by known age group and year — selected reporting areas,* United States, 2001–2010

Age (yrs)	Year										% change			
	2001	2002	2003	2004	2005	2006	2007	2008	2009	2010	2001 to 2005	2006 to 2010	2009 to 2010	2001 to 2010
% of abortions														
<15	0.6	0.6	0.6	0.6	0.6	0.5	0.5	0.5	0.5	0.5	0.0	0.0	0.0	-16.7
15-19	18.0	17.4	17.3	17.2	17.1	17.0	17.0	16.7	16.1	15.1	-5.0	-11.2	-6.2	-16.1
20-24	34.3	34.4	34.6	34.2	33.9	33.7	33.7	33.8	33.8	34.0	-1.2	0.9	0.6	-0.9
25-29	23.2	23.4	23.4	23.8	24.3	24.9	25.0	25.1	25.3	25.4	4.7	2.0	0.4	9.5
30-34	15.1	15.4	15.4	15.3	15.1	14.7	14.6	14.8	15.3	15.9	0.0	8.2	3.9	5.3
35-39	8.7	8.7	8.7	8.8	9.0	9.1	9.1	9.1	9.2	9.2	3.4	1.1	0.0	5.7
≥40	3.1	3.3	3.3	3.3	3.3	3.3	3.3	3.2	3.4	3.5	6.5	6.1	2.9	12.9
Abortion rate[†]														
<15	1.5	1.4	1.4	1.3	1.3	1.2	1.2	1.2	1.1	1.0	-13.3	-16.7	-9.1	-33.3
15-19	16.7	16.0	15.7	15.1	14.5	14.7	14.4	14.0	12.9	11.8	-13.2	-19.7	-8.5	-29.3
20-24	32.5	31.9	31.3	30.3	29.4	30.1	29.6	29.7	28.0	27.0	-9.5	-10.3	-3.6	-16.9
25-29	23.1	23.4	23.2	22.8	22.3	22.9	22.1	22.1	21.0	20.4	-3.5	-10.9	-2.9	-11.7
30-34	13.7	13.9	13.9	13.8	13.7	14.0	13.8	14.0	13.5	13.4	0.0	-4.3	-0.7	-2.2
35-39	7.2	7.4	7.5	7.6	7.8	8.0	7.9	8.0	7.7	7.7	8.3	-3.8	0.0	6.9
≥40	2.5	2.6	2.6	2.6	2.6	2.7	2.7	2.7	2.8	2.8	4.0	3.7	0.0	12.0
Abortion ratio[§]														
<15	754	771	848	790	776	765	784	813	841	862	2.9	12.7	2.5	14.3
15-19	370	375	381	372	364	357	344	345	335	339	-1.6	-5.0	1.2	-8.4
20-24	307	308	305	297	288	285	280	289	287	296	-6.2	3.9	3.1	-3.6
25-29	202	202	197	194	190	192	186	190	186	186	-5.9	-3.1	0.0	-7.9
30-34	148	150	146	144	142	143	139	142	139	138	-4.1	-3.5	-0.7	-6.8
35-39	184	183	177	173	172	174	171	175	173	172	-6.5	-1.1	-0.6	-6.5
≥40	310	317	299	292	285	285	280	274	276	275	-8.1	-3.5	-0.4	-11.3
Total (no.)	727,656	726,052	725,196	713,348	701,294	721,476	713,299	716,664	685,284	664,761	—	—	—	—

* Data from 43 reporting areas; by year, these reporting areas represent 96%–98% of all abortions reported to CDC by age during 2001–2010. Excludes nine reporting areas (Alaska, California, Florida, Louisiana, Maryland, New Hampshire, West Virginia, Vermont, and Wyoming) that did not report, did not report by age, or did not meet reporting standards for ≥1 year.

† Number of abortions obtained by women in a given age group per 1,000 women in that same age group. Adolescents aged 13–14 years were used as the denominator for the group of adolescents aged <15 years, and women aged 40–44 years were used as the denominator for the group of women aged ≥40 years. For each state, abortions for women of unknown age were distributed according to the distribution of abortions among women of known age for that state.

§ Number of abortions obtained by women in a given age group per 1,000 live births to women in that same age group. For each state, abortions for women of unknown age were distributed according to the distribution of abortions among women of known age for that state.

TABLE 5. Reported abortions among adolescents, by known age and reporting area of occurrence — selected reporting areas,* United States, 2010

State/Area	Age (yrs)										Total no.		
	<15		15		16		17		18			19	
	No.	(%) [†]	No.	(%)	No.	(%)	No.	(%)	No.	(%)		No.	(%)
Alabama	89	(5.4)	134	(8.1)	184	(11.2)	248	(15.0)	419	(25.4)	574	(34.8)	1,648
Alaska	— [§]	—	—	—	38	(11.1)	53	(15.5)	104	(30.5)	124	(36.4)	341
Arizona	46	(3.0)	71	(4.6)	142	(9.1)	236	(15.1)	463	(29.7)	601	(38.6)	1,559
Arkansas	28	(3.7)	49	(6.5)	76	(10.1)	132	(17.6)	188	(25.1)	277	(36.9)	750
Colorado	51	(3.0)	104	(6.0)	180	(10.4)	308	(17.8)	506	(29.3)	577	(33.4)	1,726
Connecticut	57	(2.6)	123	(5.7)	230	(10.6)	417	(19.3)	570	(26.4)	763	(35.3)	2,160
Delaware	21	(2.6)	48	(6.0)	68	(8.6)	173	(21.8)	212	(26.7)	273	(34.3)	795
District of Columbia [¶]	18	(3.6)	34	(6.7)	74	(14.7)	96	(19.0)	120	(23.8)	163	(32.3)	505
Georgia	218	(4.6)	317	(6.7)	507	(10.7)	752	(15.8)	1,297	(27.3)	1,662	(35.0)	4,753
Hawaii	11	(2.0)	35	(6.3)	58	(10.4)	110	(19.7)	155	(27.8)	189	(33.9)	558
Idaho	6	(2.4)	11	(4.4)	17	(6.7)	47	(18.7)	83	(32.9)	88	(34.9)	252
Indiana	51	(3.3)	88	(5.8)	154	(10.1)	207	(13.6)	421	(27.6)	605	(39.6)	1,526
Iowa	27	(3.0)	54	(6.1)	103	(11.6)	138	(15.5)	241	(27.1)	327	(36.7)	890
Kansas	38	(3.3)	70	(6.0)	116	(10.0)	171	(14.7)	329	(28.2)	441	(37.9)	1,165
Kentucky	23	(3.8)	43	(7.0)	72	(11.8)	102	(16.7)	156	(25.5)	216	(35.3)	612
Louisiana	70	(5.3)	110	(8.3)	168	(12.6)	197	(14.8)	336	(25.2)	450	(33.8)	1,331
Maine	11	(2.8)	24	(6.2)	29	(7.5)	46	(11.9)	110	(28.5)	166	(43.0)	386
Massachusetts	55	(1.9)	138	(4.8)	235	(8.2)	396	(13.8)	875	(30.6)	1,162	(40.6)	2,861
Michigan	113	(2.8)	240	(6.0)	446	(11.1)	611	(15.2)	1,171	(29.1)	1,441	(35.8)	4,022
Minnesota	48	(3.2)	86	(5.8)	134	(9.0)	214	(14.4)	463	(31.3)	536	(36.2)	1,481
Mississippi	14	(4.1)	22	(6.4)	31	(9.0)	52	(15.1)	100	(29.1)	125	(36.3)	344
Missouri	23	(2.4)	50	(5.2)	80	(8.3)	142	(14.8)	286	(29.8)	378	(39.4)	959
Montana	11	(3.1)	25	(7.1)	34	(9.7)	51	(14.5)	101	(28.7)	130	(36.9)	352
Nebraska	15	(4.2)	17	(4.7)	49	(13.6)	62	(17.3)	94	(26.2)	122	(34.0)	359
Nevada	28	(2.6)	49	(4.5)	110	(10.1)	203	(18.6)	325	(29.8)	376	(34.5)	1,091
New Jersey**	114	(2.7)	251	(6.0)	438	(10.4)	738	(17.6)	1,140	(27.2)	1,512	(36.1)	4,193
New Mexico	28	(3.2)	47	(5.4)	112	(12.9)	154	(17.7)	244	(28.1)	283	(32.6)	868
New York	568	(3.1)	1,093	(5.9)	2,125	(11.5)	3,344	(18.1)	4,976	(27.0)	6,330	(34.3)	18,436
New York City	431	(3.4)	785	(6.2)	1,494	(11.9)	2,282	(18.2)	3,390	(27.0)	4,188	(33.3)	12,570
New York State	137	(2.3)	308	(5.3)	631	(10.8)	1,062	(18.1)	1,586	(27.0)	2,142	(36.5)	5,866
North Carolina	148	(3.4)	263	(6.0)	412	(9.4)	720	(16.4)	1,200	(27.4)	1,635	(37.3)	4,378
North Dakota	—	—	—	—	16	(8.0)	41	(20.5)	67	(33.5)	66	(33.0)	200
Ohio	182	(3.9)	274	(5.8)	515	(11.0)	711	(15.2)	1,318	(28.1)	1,691	(36.0)	4,691
Oklahoma	29	(3.1)	73	(7.7)	85	(9.0)	136	(14.4)	280	(29.7)	339	(36.0)	942
Oregon	34	(2.3)	78	(5.3)	144	(9.8)	252	(17.1)	404	(27.5)	558	(38.0)	1,470
Pennsylvania	190	(3.2)	345	(5.8)	587	(9.9)	849	(14.3)	1,714	(29.0)	2,233	(37.7)	5,918
Rhode Island	22	(3.1)	31	(4.4)	58	(8.2)	96	(13.6)	233	(33.0)	266	(37.7)	706
South Carolina	24	(2.2)	55	(5.1)	96	(8.9)	240	(22.3)	266	(24.7)	395	(36.7)	1,076
South Dakota	5	(4.5)	5	(4.5)	14	(12.6)	12	(10.8)	37	(33.3)	38	(34.2)	111
Tennessee	91	(3.8)	170	(7.2)	251	(10.6)	346	(14.6)	614	(25.9)	896	(37.8)	2,368
Texas	183	(2.1)	399	(4.5)	820	(9.3)	1,361	(15.4)	2,317	(26.2)	3,764	(42.6)	8,844
Utah	20	(4.0)	25	(5.0)	43	(8.6)	73	(14.6)	136	(27.2)	203	(40.6)	500
Virginia	69	(2.1)	177	(5.5)	283	(8.8)	415	(12.9)	946	(29.4)	1,324	(41.2)	3,214
Washington	77	(2.2)	174	(5.1)	389	(11.4)	630	(18.4)	909	(26.5)	1,248	(36.4)	3,427
West Virginia	15	(4.6)	18	(5.5)	32	(9.8)	62	(19.0)	94	(28.7)	106	(32.4)	327
Wisconsin ^{††}	50	(4.3)	73	(6.2)	120	(10.3)	181	(15.5)	343	(29.3)	403	(34.4)	1,170
Total	2,926	(3.1)	5,520	(5.8)	9,875	(10.4)	15,525	(16.3)	26,363	(27.7)	35,056	(36.8)	95,265
Abortion rate^{§§}	1.0		3.6		6.3		9.8		16.1		20.9		
Abortion ratio^{¶¶}	832		535		390		326		331		295		

* Data from 45 reporting areas; excludes 7 states (California, Florida, Illinois, Maryland, New Hampshire, Vermont, and Wyoming) that did not report, did not report age among adolescents by individual year, or did not meet reporting standards.

† Percentages for the individual component categories might not add to 100 because of rounding.

§ Cell details not displayed because of small numbers (N = 1–4).

¶ Because reporting is not mandatory, information could not be obtained for all abortions performed in the District of Columbia.

** Data from hospitals and licensed ambulatory care facilities only; because reporting is not mandatory for private physicians and women's centers, information could not be obtained for all abortions performed in New Jersey.

†† Includes residents only.

§§ Number of abortions obtained by adolescents in a given age group per 1,000 adolescents in that same age group. Adolescents aged 13–14 years were used as the denominator for adolescents aged <15 years.

¶¶ Number of abortions obtained by adolescents in a given age group per 1,000 live births to adolescents in that same age group.

TABLE 6. Reported abortions among adolescents, by known age and year — selected reporting areas,* United States, 2001–2010

Age (yrs)	Year										% change			
	2001	2002	2003	2004	2005	2006	2007	2008	2009	2010	2001 to 2005	2006 to 2010	2009 to 2010	2001 to 2010
% of abortions														
<15	3.4	3.4	3.5	3.4	3.4	3.1	3.1	3.0	3.0	3.0	0.0	-3.2	0.0	-11.8
15	6.2	6.2	6.3	6.1	6.4	6.1	5.9	5.8	5.6	5.8	3.2	-4.9	3.6	-6.5
16	11.3	11.6	11.7	11.5	11.4	11.7	11.3	10.8	10.6	10.3	0.9	-12.0	-2.8	-8.8
17	17.1	17.3	17.3	17.0	17.2	17.3	17.4	17.2	16.9	16.3	0.6	-5.8	-3.6	-4.7
18	28.0	27.6	28.1	28.1	27.7	28.0	28.1	28.3	28.0	27.7	-1.1	-1.1	-1.1	-1.1
19	34.1	33.9	33.2	33.9	33.9	33.9	34.1	34.9	35.9	36.9	-0.6	8.8	2.8	8.2
Abortion rate[†]														
<15	1.5	1.4	1.4	1.3	1.2	1.2	1.2	1.1	1.0	1.0	-20.0	-16.7	0.0	-33.3
15	5.3	5.1	5.1	4.7	4.6	4.6	4.4	4.3	3.9	3.6	-13.2	-21.7	-7.7	-32.1
16	9.6	9.5	9.5	8.9	8.5	8.6	8.3	7.8	7.1	6.4	-11.5	-25.6	-9.9	-33.3
17	15.0	14.1	14.0	13.4	13.1	13.2	12.6	12.3	11.2	9.9	-12.7	-25.0	-11.6	-34.0
18	24.0	22.8	22.5	21.8	21.0	21.4	20.7	19.6	18.0	16.2	-12.5	-24.3	-10.0	-32.5
19	28.6	27.3	26.9	25.9	25.3	25.9	25.3	24.8	22.5	21.1	-11.5	-18.5	-6.2	-26.2
Abortion ratio[§]														
<15	745	761	835	774	777	748	769	790	809	837	4.3	11.9	3.5	12.3
15	522	548	557	531	546	530	505	519	506	541	4.6	2.1	6.9	3.6
16	423	438	461	437	435	433	414	398	392	394	2.8	-9.0	0.5	-6.9
17	364	365	375	363	360	356	346	340	332	330	-1.1	-7.3	-0.6	-9.3
18	376	379	387	380	367	360	346	345	330	335	-2.4	-6.9	1.5	-10.9
19	332	327	331	326	317	311	300	304	296	300	-4.5	-3.5	1.4	-9.6
Total (no.)	122,804	118,170	117,730	114,397	112,077	114,758	113,400	110,860	101,783	92,560	—	—	—	—

* Data from 41 reporting areas; by year, these areas represent 91%–97% of all abortions reported to CDC for adolescents during 2001–2010. Excludes 11 states (Alaska, California, Delaware, Florida, Illinois, Maryland, New Hampshire, Rhode Island, West Virginia, Vermont, and Wyoming) that did not report, did not report age among adolescents by individual year, or did not meet reporting standards.

† Number of abortions obtained by adolescents in a given age group per 1,000 adolescents in that same age group. Adolescents aged 13–14 years were used as the denominator for adolescents aged <15 years.

§ Number of abortions obtained by adolescents in a given age group per 1,000 live births to adolescents in that same age group.

TABLE 7. Reported abortions, by known weeks of gestation* and reporting area of occurrence — selected reporting areas,† United States, 2010

State/Area	Weeks of gestation										Total abortions reported by known gestational age [¶]			
	≤ 8		9-13		14-15		16-17		18-20		≥ 21		No.	% of all reported abortions
Alabama	6,344	(61.7)	3,012	(29.3)	417	(4.1)	265	(2.6)	229	(2.2)	11	(0.1)	10,278	(100.0)
Alaska	1,023	(59.9)	664	(38.9)	—**	—	0	(0.0)	—	—	20	(1.2)	1,708	(99.6)
Arizona	8,095	(71.8)	2,467	(21.9)	331	(2.9)	165	(1.5)	144	(1.3)	77	(0.7)	11,279	(98.6)
Arkansas	2,865	(63.2)	1,161	(25.6)	146	(3.2)	—	—	212	(4.7)	—	—	4,531	(100.0)
Colorado	7,883	(70.8)	2,332	(20.9)	332	(3.0)	188	(1.7)	141	(1.3)	256	(2.3)	11,132	(99.3)
District of Columbia ^{††}	1,868	(64.8)	559	(19.4)	173	(6.0)	180	(6.2)	103	(3.6)	0	(0.0)	2,883	(99.6)
Georgia	19,866	(57.4)	10,758	(31.1)	1,380	(4.0)	797	(2.3)	799	(2.3)	985	(2.8)	34,585	(100.0)
Hawaii	1,818	(59.6)	971	(31.8)	88	(2.9)	82	(2.7)	72	(2.4)	19	(0.6)	3,050	(99.5)
Idaho	994	(65.8)	498	(33.0)	6	(0.4)	—	—	—	—	6	(0.4)	1,510	(100.0)
Indiana	6,229	(62.1)	3,600	(35.9)	88	(0.9)	88	(0.9)	27	(0.3)	0	(0.0)	10,032	(99.8)
Iowa	3,911	(72.8)	1,182	(22.0)	139	(2.6)	77	(1.4)	48	(0.9)	14	(0.3)	5,371	(99.5)
Kansas	5,401	(64.8)	2,168	(26.0)	300	(3.6)	213	(2.6)	202	(2.4)	49	(0.6)	8,333	(100.0)
Kentucky	2,428	(61.8)	1,044	(26.6)	170	(4.3)	107	(2.7)	130	(3.3)	50	(1.3)	3,929	(100.0)
Louisiana	5,254	(59.5)	2,694	(30.5)	374	(4.2)	245	(2.8)	157	(1.8)	111	(1.3)	8,835	(99.6)
Maine	1,630	(70.5)	654	(28.3)	6	(0.3)	—	—	9	(0.4)	—	—	2,311	(100.0)
Michigan	14,603	(62.7)	6,513	(28.0)	981	(4.2)	527	(2.3)	418	(1.8)	237	(1.0)	23,279	(99.9)
Minnesota	7,505	(65.2)	2,969	(25.8)	377	(3.3)	247	(2.1)	332	(2.9)	74	(0.6)	11,504	(100.0)
Missouri	3,663	(59.5)	1,931	(31.3)	218	(3.5)	137	(2.2)	159	(2.6)	53	(0.9)	6,161	(100.0)
Montana	1,497	(69.4)	513	(23.8)	57	(2.6)	35	(1.6)	42	(1.9)	12	(0.6)	2,156	(99.8)
Nevada	4,902	(64.0)	2,112	(27.6)	308	(4.0)	202	(2.6)	112	(1.5)	29	(0.4)	7,665	(98.4)
New Jersey ^{§§}	17,504	(62.1)	6,541	(23.2)	1,341	(4.8)	1,008	(3.6)	968	(3.4)	816	(2.9)	28,178	(99.9)
New Mexico	2,957	(66.7)	999	(22.6)	164	(3.7)	103	(2.3)	73	(1.6)	134	(3.0)	4,430	(92.7)
New York City	53,771	(64.8)	20,683	(24.9)	2,527	(3.0)	1,825	(2.2)	2,312	(2.8)	1,857	(2.2)	82,975	(99.1)
North Carolina	19,369	(65.8)	7,620	(25.9)	1,224	(4.2)	758	(2.6)	476	(1.6)	8	(0.0)	29,455	(95.2)
North Dakota	900	(69.7)	358	(27.7)	31	(2.4)	—	—	—	—	0	(0.0)	1,291	(100.0)
Ohio	16,283	(58.2)	8,783	(31.4)	1,213	(4.3)	675	(2.4)	569	(2.0)	458	(1.6)	27,981	(99.5)
Oklahoma	4,014	(65.8)	1,615	(26.5)	270	(4.4)	141	(2.3)	44	(0.7)	13	(0.2)	6,097	(100.0)
Oregon	6,348	(65.4)	2,505	(25.8)	271	(2.8)	215	(2.2)	211	(2.2)	152	(1.6)	9,702	(97.1)
Rhode Island	2,900	(71.6)	901	(22.2)	117	(2.9)	72	(1.8)	54	(1.3)	9	(0.2)	4,053	(96.9)
South Carolina	4,626	(71.6)	1,759	(27.2)	28	(0.4)	7	(0.1)	20	(0.3)	24	(0.4)	6,464	(100.0)
South Dakota	488	(66.3)	242	(32.9)	—	—	0	(0.0)	—	—	—	—	736	(99.9)
Tennessee	10,739	(66.5)	4,850	(30.0)	505	(3.1)	44	(0.3)	6	(0.0)	10	(0.1)	16,154	(98.7)
Texas	57,782	(74.6)	15,928	(20.6)	2,498	(3.2)	381	(0.5)	471	(0.6)	395	(0.5)	77,455	(100.0)
Utah	2,552	(68.7)	901	(24.3)	116	(3.1)	56	(1.5)	78	(2.1)	12	(0.3)	3,715	(98.3)
Virginia	18,111	(70.2)	7,304	(28.3)	185	(0.7)	65	(0.3)	127	(0.5)	20	(0.1)	25,812	(99.5)
Washington	14,030	(66.6)	5,151	(24.5)	565	(2.7)	417	(2.0)	473	(2.2)	424	(2.0)	21,060	(99.7)
West Virginia	1,194	(59.8)	661	(33.1)	93	(4.7)	23	(1.2)	20	(1.0)	7	(0.4)	1,998	(99.9)
Total	341,347	(65.9)	134,603	(26.0)	17,041	(3.3)	9,499	(1.8)	9,245	(1.8)	6,353	(1.2)	518,088	(99.2)^{¶¶}

* Gestational age based on the clinician's estimate (Alabama, Alaska, Arizona, Colorado, Hawaii, Idaho, Indiana, Iowa, Kansas, Louisiana, Michigan, Minnesota, Missouri, Nevada, New Jersey, New Mexico, New York City, North Carolina, North Dakota, Ohio, Oklahoma, Oregon, South Carolina, South Dakota, Tennessee, Texas, Virginia, Washington, and West Virginia); gestational age calculated from the last normal menstrual period (Rhode Island); gestational age based on the clinician's estimate when the date of the last menstrual period unavailable (Arkansas, Georgia); gestational age calculated from the last normal menstrual period when the clinician's estimate unavailable (Kentucky, Maine, Montana, and Utah); or not reported (District of Columbia).

† Data are from 37 reporting areas; excludes 15 areas (California, Connecticut, Delaware, Florida, Illinois, Maryland, Massachusetts, Mississippi, Nebraska, New Hampshire, New York State, Pennsylvania, Vermont, Wisconsin, and Wyoming) that did not report, did not report by gestational age, or did not meet reporting standards.

§ Percentages for the individual component categories might not add to 100 because of rounding.

¶ Calculated as the number of abortions reported by known gestational age divided by the sum of abortions reported by known and unknown gestational age.

** Cell details not displayed because of small numbers (N = 1–4).

†† Because reporting is not mandatory, information could not be obtained for all abortions performed in the District of Columbia.

§§ Data from hospitals and licensed ambulatory care facilities only; because reporting is not mandatory for private physicians and women's centers, information could not be obtained for all abortions performed in New Jersey.

¶¶ Percentage based on a total of 522,307 abortions reported among the areas that met reporting standards for gestational age.

TABLE 8. Reported abortions, by known weeks of gestation and year — selected reporting areas,* United States, 2001–2010

Weeks of gestation	Year										% change			
	2001	2002	2003	2004	2005	2006	2007	2008	2009	2010	2001 to 2005	2006 to 2010	2009 to 2010	2001 to 2010
≤13 weeks' gestation (%)	91.1	91.2	91.0	91.6	91.5	91.6	91.6	91.5	91.9	92.0	0.4	0.4	0.1	1.0
≤6-8	59.9	61.6	61.9	63.3	63.6	63.7	64	64.4	65.5	66.1	6.2	3.8	0.9	10.4
9-13	31.2	29.6	29.1	28.3	27.9	27.9	27.6	27.1	26.4	25.9	-10.6	-7.2	-1.9	-17.0
>13 weeks' gestation (%)	8.9	8.9	9.1	8.4	8.6	8.3	8.4	8.5	8.1	8.0	-3.4	-3.6	-1.2	-10.1
14-15	3.2	3.1	3.2	3.2	3.2	3.2	3.3	3.3	3.2	3.2	0.0	0.0	0.0	0.0
16-17	2.1	2.1	2.1	1.8	1.9	1.8	1.8	1.9	1.8	1.7	-9.5	-5.6	-5.6	-19.0
18-20	2.1	2.2	2.2	1.9	2.0	1.9	1.9	1.9	1.8	1.8	-4.8	-5.3	0.0	-14.3
≥ 21	1.5	1.5	1.6	1.5	1.5	1.4	1.4	1.4	1.3	1.3	0.0	-7.1	0.0	-13.3
Total (no.)	503,140	504,940	505,342	494,864	487,956	498,618	493,758	495,536	473,372	461,491	—	—	—	—

* Data from 30 reporting areas; by year, these reporting areas represent 76%–78% of the abortions reported to CDC by gestational age during 2001–2010. Excludes 22 areas (Alaska, California, Connecticut, Delaware, District of Columbia, Florida, Illinois, Louisiana, Maryland, Massachusetts, Mississippi, Nebraska, Nevada, New Hampshire, New York State, North Carolina, Pennsylvania, Rhode Island, Vermont, West Virginia, Wisconsin, and Wyoming) that did not report, did not report by gestational age, or did not meet reporting standards for ≥1 year.

TABLE 9. Reported abortions obtained at ≤13 weeks' gestation,* distribution by week at ≤13 weeks' gestation and by reporting area of occurrence — selected reporting areas,† United States, 2010

State/Area	Week of gestation														Total no. of abortions at ≤13 weeks		
	≤6		7		8		9		10		11		12			13	
	No.	(%) [§]	No.	(%)	No.	(%)	No.	(%)	No.	(%)	No.	(%)	No.	(%)		No.	(%)
Alabama	3,191	(34.1)	1,815	(19.4)	1,338	(14.3)	851	(9.1)	715	(7.6)	525	(5.6)	501	(5.4)	420	(4.5)	9,356
Alaska	453	(26.9)	301	(17.8)	269	(15.9)	203	(12.0)	132	(7.8)	133	(7.9)	102	(6.0)	94	(5.6)	1,687
Arizona	4,039	(38.2)	2,476	(23.4)	1,580	(15.0)	874	(8.3)	550	(5.2)	478	(4.5)	307	(2.9)	258	(2.4)	10,562
Arkansas	1,612	(40.0)	772	(19.2)	481	(11.9)	384	(9.5)	285	(7.1)	199	(4.9)	159	(3.9)	134	(3.3)	4,026
Colorado	4,468	(43.7)	1,920	(18.8)	1,495	(14.6)	789	(7.7)	519	(5.1)	461	(4.5)	277	(2.7)	286	(2.8)	10,215
District of Columbia [¶]	1,047	(43.1)	460	(19.0)	361	(14.9)	181	(7.5)	148	(6.1)	115	(4.7)	50	(2.1)	65	(2.7)	2,427
Georgia	8,251	(26.9)	6,879	(22.5)	4,736	(15.5)	3,343	(10.9)	2,634	(8.6)	2,193	(7.2)	1,524	(5.0)	1,064	(3.5)	30,624
Hawaii	856	(30.7)	501	(18.0)	461	(16.5)	276	(9.9)	266	(9.5)	170	(6.1)	152	(5.4)	107	(3.8)	2,789
Idaho	369	(24.7)	315	(21.1)	310	(20.8)	181	(12.1)	101	(6.8)	94	(6.3)	69	(4.6)	53	(3.6)	1,492
Indiana	2,232	(22.7)	2,082	(21.2)	1,915	(19.5)	1,230	(12.5)	951	(9.7)	585	(6.0)	512	(5.2)	322	(3.3)	9,829
Iowa	2,132	(41.9)	1,009	(19.8)	770	(15.1)	372	(7.3)	319	(6.3)	235	(4.6)	167	(3.3)	89	(1.7)	5,093
Kansas	2,940	(38.8)	1,506	(19.9)	955	(12.6)	773	(10.2)	505	(6.7)	387	(5.1)	281	(3.7)	222	(2.9)	7,569
Kentucky	875	(25.2)	867	(25.0)	686	(19.8)	270	(7.8)	272	(7.8)	230	(6.6)	188	(5.4)	84	(2.4)	3,472
Louisiana	2,751	(34.6)	1,342	(16.9)	1,161	(14.6)	927	(11.7)	680	(8.6)	482	(6.1)	327	(4.1)	278	(3.5)	7,948
Maine	717	(31.4)	529	(23.2)	384	(16.8)	238	(10.4)	148	(6.5)	89	(3.9)	97	(4.2)	82	(3.6)	2,284
Michigan	7,438	(35.2)	4,105	(19.4)	3,060	(14.5)	2,267	(10.7)	1,458	(6.9)	1,221	(5.8)	909	(4.3)	658	(3.1)	21,116
Minnesota	3,564	(34.0)	2,323	(22.2)	1,618	(15.4)	1,091	(10.4)	740	(7.1)	479	(4.6)	349	(3.3)	310	(3.0)	10,474
Missouri	1,485	(26.5)	1,163	(20.8)	1,015	(18.1)	677	(12.1)	462	(8.3)	367	(6.6)	281	(5.0)	144	(2.6)	5,594
Montana	842	(41.9)	363	(18.1)	292	(14.5)	180	(9.0)	111	(5.5)	81	(4.0)	85	(4.2)	56	(2.8)	2,010
Nevada	2,196	(31.3)	1,462	(20.8)	1,244	(17.7)	841	(12.0)	487	(6.9)	363	(5.2)	255	(3.6)	166	(2.4)	7,014
New Jersey**	8,709	(36.2)	5,093	(21.2)	3,702	(15.4)	2,064	(8.6)	1,542	(6.4)	973	(4.0)	897	(3.7)	1,065	(4.4)	24,045
New Mexico	1,759	(44.5)	663	(16.8)	535	(13.5)	354	(8.9)	236	(6.0)	162	(4.1)	156	(3.9)	91	(2.3)	3,956
New York City	28,850	(38.7)	14,202	(19.1)	10,719	(14.4)	8,736	(11.7)	4,585	(6.2)	3,371	(4.5)	2,629	(3.5)	1,362	(1.8)	74,454
North Carolina	10,011	(37.1)	5,442	(20.2)	3,916	(14.5)	2,520	(9.3)	1,781	(6.6)	1,404	(5.2)	1,104	(4.1)	811	(3.0)	26,989
North Dakota	418	(33.2)	309	(24.6)	173	(13.8)	115	(9.1)	90	(7.2)	68	(5.4)	54	(4.3)	31	(2.5)	1,258
Ohio	7,542	(30.1)	4,860	(19.4)	3,881	(15.5)	2,851	(11.4)	2,052	(8.2)	1,542	(6.2)	1,227	(4.9)	1,111	(4.4)	25,066
Oklahoma	2,295	(40.8)	911	(16.2)	808	(14.4)	509	(9.0)	431	(7.7)	353	(6.3)	199	(3.5)	123	(2.2)	5,629
Oregon	3,455	(39.0)	1,602	(18.1)	1,291	(14.6)	862	(9.7)	515	(5.8)	449	(5.1)	369	(4.2)	310	(3.5)	8,853
Rhode Island	1,639	(43.1)	691	(18.2)	570	(15.0)	331	(8.7)	192	(5.1)	162	(4.3)	76	(2.0)	140	(3.7)	3,801
South Carolina	2,595	(40.6)	1,182	(18.5)	849	(13.3)	546	(8.6)	407	(6.4)	349	(5.5)	313	(4.9)	144	(2.3)	6,385
South Dakota	230	(31.5)	114	(15.6)	144	(19.7)	71	(9.7)	52	(7.1)	52	(7.1)	30	(4.1)	37	(5.1)	730
Tennessee	5,660	(36.3)	3,066	(19.7)	2,013	(12.9)	1,483	(9.5)	1,120	(7.2)	985	(6.3)	823	(5.3)	439	(2.8)	15,589
Texas	37,166	(50.4)	11,374	(15.4)	9,242	(12.5)	5,559	(7.5)	3,855	(5.2)	2,825	(3.8)	1,939	(2.6)	1,750	(2.4)	73,710
Utah	1,290	(37.4)	785	(22.7)	477	(13.8)	321	(9.3)	204	(5.9)	132	(3.8)	126	(3.6)	118	(3.4)	3,453
Virginia	8,883	(35.0)	5,412	(21.3)	3,816	(15.0)	2,448	(9.6)	1,799	(7.1)	1,415	(5.6)	1,090	(4.3)	552	(2.2)	25,415
Washington	7,563	(39.4)	3,633	(18.9)	2,834	(14.8)	1,666	(8.7)	1,203	(6.3)	943	(4.9)	739	(3.9)	600	(3.1)	19,181
West Virginia	500	(27.0)	406	(21.9)	288	(15.5)	223	(12.0)	151	(8.1)	144	(7.8)	102	(5.5)	41	(2.2)	1,855
Total	180,023	(37.8)	91,935	(19.3)	69,389	(14.6)	46,607	(9.8)	31,698	(6.7)	24,216	(5.1)	18,465	(3.9)	13,617	(2.9)	475,950

* Gestational age based on the clinician's estimate (Alabama, Alaska, Arizona, Colorado, Hawaii, Idaho, Indiana, Iowa, Kansas, Louisiana, Michigan, Minnesota, Missouri, Nevada, New Jersey, New Mexico, New York City, North Carolina, North Dakota, Ohio, Oklahoma, Oregon, South Carolina, South Dakota, Tennessee, Texas, Virginia, Washington, and West Virginia); gestational age calculated from the last normal menstrual period (Rhode Island); gestational age based on the clinician's estimate when the date of the last menstrual period unavailable (Arkansas, Georgia); gestational age calculated from the last normal menstrual period when the clinician's estimate unavailable (Kentucky, Maine, Montana, and Utah); or not reported (District of Columbia).

† Data are from 37 reporting areas; excludes 15 areas (California, Connecticut, Delaware, Florida, Illinois, Maryland, Massachusetts, Mississippi, Nebraska, New Hampshire, New York State, Pennsylvania, Vermont, Wisconsin, and Wyoming) that did not report, did not report by gestational age, or did not meet reporting standards.

§ Percentages for the individual component categories might not add to 100 because of rounding.

¶ Because reporting is not mandatory, information could not be obtained for all abortions performed in the District of Columbia.

** Data from hospitals and licensed ambulatory care facilities only; because reporting is not mandatory for private physicians and women's centers, information could not be obtained for all abortions performed in New Jersey.

TABLE 10. Reported abortions obtained at ≤ 13 weeks' gestation, distribution by week at ≤ 13 weeks' gestation and by year — selected reporting areas,* United States, 2001–2010

Weeks of gestation	Year										% change			
	2001	2002	2003	2004	2005	2006	2007	2008	2009	2010	2001 to 2005	2006 to 2010	2009 to 2010	2001 to 2010
% distribution among abortions reported at ≤ 13 weeks														
≤ 6	28.0	30.5	31.3	33.1	34.3	34.4	35.4	35.8	37.0	38.1	22.5	10.8	3.0	36.1
7	20.0	20.1	20.1	19.8	19.7	20.0	19.9	19.8	19.4	19.3	-1.5	-3.5	-0.5	-3.5
8	17.8	17.0	16.7	16.2	15.5	15.2	14.6	14.7	14.9	14.5	-12.9	-4.6	-2.7	-18.5
9	11.9	11.3	11.0	10.5	10.4	10.4	10.1	10.0	9.7	9.8	-12.6	-5.8	1.0	-17.6
10	8.6	8.0	7.8	7.6	7.5	7.4	7.3	7.1	6.7	6.6	-12.8	-10.8	-1.5	-23.3
11	6.2	5.8	5.7	5.5	5.4	5.3	5.4	5.4	5.3	5.0	-12.9	-5.7	-5.7	-19.4
12	4.5	4.3	4.4	4.2	4.2	4.2	4.2	4.2	4.1	3.9	-6.7	-7.1	-4.9	-13.3
13	3.1	3.0	3.0	3.0	3.1	3.1	3.0	3.0	2.9	2.8	0.0	-9.7	-3.4	-9.7
Total (no.)	458,120	460,297	459,858	452,967	446,489	456,897	451,435	453,547	434,791	424,229	—	—	—	—

* Data from 30 reporting areas; by year, these reporting areas represent 79%—85% of the abortions reported to CDC by gestational age during 2001–2010. Excludes 22 areas (Alaska, California, Connecticut, Delaware, District of Columbia, Florida, Illinois, Louisiana, Maryland, Massachusetts, Mississippi, Nebraska, Nevada, New Hampshire, New York State, North Carolina, Pennsylvania, Rhode Island, Vermont, West Virginia, Wisconsin, and Wyoming) that did not report, did not report by gestational age, or did not meet reporting standards for ≥ 1 year.

TABLE 11. Reported abortions, by known method type and reporting area of occurrence — selected reporting areas,* United States, 2010

State/Area	Curettage [†]			Medical						Intrauterine Instillation [§]	Other [¶]	Total abortions reported by known method type	% of all reported abortions ^{††}	
	Curettage, ≤13 weeks' gestation	Curettage, >13 weeks' gestation	Curettage unknown gestational age	Medical, ≤8 weeks' gestation	Medical, >8 weeks' gestation	Medical, unknown gestational age	No.	(%)	No.					(%)
Alabama ^{§§}	7,539 (73.5)	892 (8.7)	— ^{¶¶}	—	NA	NA	NA	NA	NA	NA	—	—	1,821 (17.8)	10,255 (99.8)
Alaska	1,344 (79.2)	13 (0.8)	—	—	319 (18.8)	18 (1.1)	—	—	0 (0.0)	0 (0.0)	0 (0.0)	0 (0.0)	1,698 (99.0)	
Arkansas	3,301 (72.8)	501 (11.1)	0 (0.0)	—	702 (15.5)	27 (0.6)	—	—	—	—	—	0 (0.0)	4,532 (100.0)	
Colorado	6,069 (54.1)	672 (6.0)	47 (0.4)	—	3,743 (33.4)	167 (1.5)	—	—	—	—	—	479 (4.3)	11,210 (100.0)	
Connecticut ^{***}	NA	NA	NA	9,567 (71.2)	NA	NA	NA	NA	3,863 (28.8)	—	—	—	—	13,435 (100.0)
District of Columbia ^{†††}	1,542 (53.2)	456 (15.7)	0 (0.0)	—	872 (30.1)	13 (0.4)	0 (0.0)	0 (0.0)	0 (0.0)	0 (0.0)	0 (0.0)	13 (0.4)	2,896 (100.0)	
Georgia	27,679 (80.0)	3,920 (11.3)	0 (0.0)	—	2,807 (8.1)	153 (0.4)	0 (0.0)	0 (0.0)	0 (0.0)	0 (0.0)	0 (0.0)	20 (0.1)	34,579 (100.0)	
Hawaii ^{§§}	2,649 (86.5)	260 (8.5)	11 (0.4)	—	NA	NA	NA	NA	NA	0 (0.0)	0 (0.0)	143 (4.7)	3,063 (100.0)	
Idaho	994 (65.8)	—	0 (0.0)	—	485 (32.1)	19 (1.3)	0 (0.0)	0 (0.0)	—	—	—	10 (0.7)	1,510 (100.0)	
Indiana	7,733 (77.0)	201 (2.0)	10 (0.1)	—	1,875 (18.7)	107 (1.1)	6 (0.1)	0 (0.0)	0 (0.0)	0 (0.0)	0 (0.0)	112 (1.1)	10,044 (100.0)	
Iowa	2,223 (41.2)	67 (1.2)	8 (0.1)	—	2,404 (44.5)	110 (2.0)	6 (0.1)	0 (0.0)	0 (0.0)	0 (0.0)	0 (0.0)	581 (10.8)	5,399 (100.0)	
Kansas	5,370 (64.4)	758 (9.1)	0 (0.0)	—	2,182 (26.2)	20 (0.2)	0 (0.0)	0 (0.0)	—	—	—	—	8,333 (100.0)	
Kentucky ^{***}	NA	NA	NA	3,140 (80.0)	NA	NA	NA	NA	785 (20.0)	0 (0.0)	0 (0.0)	0 (0.0)	3,925 (99.9)	
Louisiana ^{§§}	5,729 (65.2)	878 (10.0)	17 (0.2)	—	NA	NA	NA	NA	NA	0 (0.0)	0 (0.0)	2,165 (24.6)	8,789 (99.1)	
Maine	1,839 (79.6)	7 (0.3)	0 (0.0)	—	430 (18.6)	35 (1.5)	0 (0.0)	0 (0.0)	0 (0.0)	0 (0.0)	0 (0.0)	0 (0.0)	2,311 (100.0)	
Massachusetts ^{***}	NA	NA	NA	15,948 (76.7)	NA	NA	NA	NA	4,679 (22.5)	5 (0.0)	0 (0.0)	170 (0.8)	20,802 (100.0)	
Michigan	18,056 (77.5)	2,143 (9.2)	26 (0.1)	—	2,947 (12.6)	128 (0.5)	—	—	—	—	—	21 (0.1)	23,304 ^{§§§} (100.0)	
Minnesota	8,107 (70.5)	991 (8.6)	—	—	2,147 (18.7)	248 (2.2)	—	—	6 (0.1)	5 (0.0)	5 (0.0)	11,505 (100.0)		
Mississippi	1,849 (80.5)	52 (2.3)	396 (17.2)	—	0 (0.0)	0 (0.0)	0 (0.0)	0 (0.0)	0 (0.0)	0 (0.0)	0 (0.0)	0 (0.0)	2,297 (100.0)	
Missouri	4,097 (66.6)	560 (9.1)	0 (0.0)	—	1,439 (23.4)	58 (0.9)	—	—	—	—	—	0 (0.0)	6,156 (99.9)	
Montana	1,262 (58.4)	141 (6.5)	—	—	740 (34.3)	13 (0.6)	—	—	0 (0.0)	0 (0.0)	0 (0.0)	0 (0.0)	2,160 (100.0)	
Nebraska ^{***}	NA	NA	NA	1,717 (69.7)	NA	NA	NA	NA	746 (30.3)	—	—	—	2,464 (100.0)	
Nevada	6,299 (81.6)	643 (8.3)	104 (1.3)	—	625 (8.1)	36 (0.5)	10 (0.1)	0 (0.0)	—	—	—	—	7,718 (99.1)	
New Jersey ^{¶¶¶}	22,745 (80.6)	3,854 (13.7)	32 (0.1)	—	1,250 (4.4)	41 (0.1)	7 (0.0)	41 (0.1)	247 (0.9)	247 (0.9)	247 (0.9)	28,217 (100.0)		
New Mexico	3,055 (64.8)	368 (7.8)	169 (3.6)	—	731 (15.5)	161 (3.4)	160 (3.4)	26 (0.6)	44 (0.9)	44 (0.9)	44 (0.9)	4,714 (98.6)		
New York	82,054 (71.7)	10,805 (9.4)	4,317 (3.8)	—	12,212 (10.7)	3,438 (3.0)	1,271 (1.1)	47 (0.0)	326 (0.3)	326 (0.3)	326 (0.3)	114,470 (98.9)		
New York City	63,195 (75.8)	8,338 (10.0)	655 (0.8)	—	9,094 (10.9)	1,966 (2.4)	94 (0.1)	19 (0.0)	34 (0.0)	34 (0.0)	34 (0.0)	83,395 (99.6)		
New York State	18,859 (60.7)	2,467 (7.9)	3,662 (11.8)	—	3,118 (10.0)	1,472 (4.7)	1,177 (3.8)	28 (0.1)	292 (0.9)	292 (0.9)	292 (0.9)	31,075 (97.2)		
North Carolina	21,499 (71.2)	2,385 (7.9)	910 (3.0)	—	4,972 (16.5)	122 (0.4)	280 (0.9)	7 (0.0)	11 (0.0)	11 (0.0)	11 (0.0)	30,186 (97.5)		
North Dakota	1,031 (79.9)	33 (2.6)	0 (0.0)	—	226 (17.5)	0 (0.0)	0 (0.0)	0 (0.0)	—	—	—	—	1,291 (100.0)	
Ohio	18,714 (68.0)	3,371 (12.3)	44 (0.2)	—	5,287 (19.2)	482 (1.8)	93 (0.3)	29 (0.1)	818 (3.0)	818 (3.0)	818 (3.0)	27,501 ^{§§§} (97.8)		
Oklahoma	3,796 (62.3)	468 (7.7)	0 (0.0)	—	1,824 (29.9)	9 (0.1)	0 (0.0)	0 (0.0)	0 (0.0)	0 (0.0)	0 (0.0)	—	6,097 (100.0)	
Oregon	6,888 (69.1)	815 (8.2)	225 (2.3)	—	1,846 (18.5)	76 (0.8)	57 (0.6)	—	—	—	—	—	9,964 (99.7)	
Pennsylvania	25,500 (69.3)	4,586 (12.5)	0 (0.0)	—	6,334 (17.2)	333 (0.9)	—	—	—	—	—	18 (0.0)	36,775 (100.0)	
Rhode Island	3,004 (72.1)	246 (5.9)	110 (2.6)	—	778 (18.7)	12 (0.3)	16 (0.4)	—	—	—	—	—	4,168 (99.7)	
South Carolina	3,837 (59.4)	55 (0.9)	0 (0.0)	—	2,482 (38.4)	76 (1.2)	—	—	11 (0.2)	—	—	—	6,462 (100.0)	
South Dakota	452 (61.3)	—	0 (0.0)	—	270 (36.6)	12 (1.6)	—	—	0 (0.0)	—	—	—	737 (100.0)	
Tennessee ^{§§}	11,246 (69.3)	531 (3.3)	126 (0.8)	—	NA	NA	NA	NA	NA	0 (0.0)	0 (0.0)	4,316 (26.6)	16,219 (99.1)	
Texas	54,647 (70.6)	3,606 (4.7)	7 (0.0)	—	18,816 (24.3)	362 (0.5)	—	—	—	—	—	10 (0.0)	77,453 (100.0)	
Utah	2,141 (56.7)	244 (6.5)	31 (0.8)	—	1,272 (33.7)	50 (1.3)	33 (0.9)	0 (0.0)	5 (0.1)	5 (0.1)	5 (0.1)	3,776 (99.9)		
Virginia	21,520 (83.1)	371 (1.4)	96 (0.4)	—	3,776 (14.6)	60 (0.2)	31 (0.1)	6 (0.0)	25 (0.1)	25 (0.1)	25 (0.1)	25,885 (99.8)		
Washington	14,432 (68.3)	1,809 (8.6)	50 (0.2)	—	4,672 (22.1)	80 (0.4)	14 (0.1)	23 (0.1)	35 (0.2)	35 (0.2)	35 (0.2)	21,115 (100.0)		
West Virginia	1,672 (83.6)	135 (6.8)	—	—	181 (9.1)	9 (0.5)	0 (0.0)	0 (0.0)	0 (0.0)	0 (0.0)	0 (0.0)	—	1,999 (100.0)	
Total	445,239 (72.3)	50,628 (8.2)	—^{****}	—^{****}	101,939 (16.6)	7,282 (1.2)	—^{††††}	—^{††††}	222 (0.0)	11,463 (1.9)	11,463 (1.9)	615,414^{§§§§}	(99.5)^{¶¶¶¶}	
Total among states with medical abortion^{*****}	417,895 (72.4)	48,092 (8.3)	—^{****}	—^{****}	101,939 (17.7)	72,82 (1.3)	—^{††††}	—^{††††}	221 (0.0)	3,018 (0.5)	3,018 (0.5)	577,088^{§§§§}	(99.5)^{†††††}	

See table footnotes on page 30.

TABLE 11. (Continued) Reported abortions, by known method type and reporting area of occurrence — selected reporting areas,* United States, 2010

Abbreviation: NA = not available.

- * Data from 42 reporting areas; excludes ten states (Arizona, California, Delaware, Florida, Illinois, Maryland, New Hampshire, Vermont, Wisconsin, and Wyoming) that did not report, did not report by method type, or did not meet reporting standards. Because four reporting areas did not include medical abortion as a separate category on their reporting form (Alabama, Hawaii, Louisiana, and Tennessee), numbers and percentages including this method are based on 38 states.
- † Includes aspiration curettage, suction curettage, manual vacuum aspiration, menstrual extraction, sharp curettage, and dilation and evacuation procedures.
- § Intrauterine instillations reported at ≤12 weeks' gestation are not presented with abortions reported by known method type.
- ¶ Includes hysterotomy/hysterectomy and procedures reported as "other."
- ** Percentages for the individual component categories might not add to 100 because of rounding and because some areas report more than one method for each abortion.
- †† Calculated as the number of abortions reported by known method type divided by the sum of abortions reported by known and unknown method type.
- §§ Numbers for medical abortion are not presented because medical abortion was not included as a separate category on the reporting form.
- ¶¶ Cells details not displayed because of small numbers (N = 1–4).
- *** Numbers for curettage procedures at ≤13 weeks versus >13 weeks and for medical abortion at ≤8 weeks versus >8 weeks are not presented because gestational age data were not provided or were provided in incompatible categories.
- ††† Because reporting is not mandatory, information could not be obtained for all abortions performed in the District of Columbia.
- §§§ Because more than one method was reported for some abortions, the sum of the individual methods exceeds the total number of abortions reported by known method type. "Other" methods might have been used concomitantly with specified method types to aid in the completion of the abortion.
- ¶¶¶ Data from hospitals and licensed ambulatory care facilities only; because reporting is not mandatory for private physicians and women's centers, information could not be obtained for all abortions performed in New Jersey.
- **** Curettage abortions reported without a gestational age were distributed among the curettage categories according to the distribution of abortions performed by curettage at known gestational age.
- †††† Medical abortions reported without a gestational age were distributed among the medical abortion categories according to the distribution of medical abortions at known gestational age.
- §§§§ Because some states reported more than one method for some abortions, the sum of the individual methods exceeds the total number of abortions reported by known method type.
- ¶¶¶¶ Percentage based on a total of 618,622 abortions reported among the areas that met reporting standards for method type.
- ***** Excludes four states (Alabama, Hawaii, Louisiana, and Tennessee) that have been included in the total for all areas reporting by method type because these states did not include medical abortion as a separate category on their reporting form.
- ††††† Percentage based on a total of 580,033 abortions reported among the areas that met reporting standards for method type and included medical abortion on their reporting form.

TABLE 12. Reported abortions, by known race/ethnicity of women who obtained an abortion and reporting area of occurrence — selected reporting areas,* United States, 2010

State/area	Non-Hispanic						Hispanic		Total abortions reported by known race/ethnicity	
	White		Black		Other		No.	(%)	No.	% of all reported abortions [§]
	No.	(%) [†]	No.	(%)	No.	(%)				
Alabama	3,715	(36.5)	5,890	(57.8)	212	(2.1)	367	(3.6)	10,184	(99.1)
Alaska	851	(57.3)	122	(8.2)	489	(33.0)	22	(1.5)	1,484	(86.5)
Arkansas	2,442	(54.0)	1,606	(35.5)	201	(4.4)	277	(6.1)	4,526	(99.9)
Colorado	6,110	(57.7)	839	(7.9)	942	(8.9)	2,690	(25.4)	10,581	(94.4)
Delaware	1,952	(42.2)	2,115	(45.7)	162	(3.5)	400	(8.6)	4,629	(99.2)
District of Columbia [¶]	659	(23.8)	1,483	(53.6)	313	(11.3)	311	(11.2)	2,766	(95.5)
Georgia	6,908	(22.1)	16,738	(53.6)	1,460	(4.7)	6,138	(19.6)	31,244	(90.3)
Idaho	1,143	(77.1)	20	(1.3)	73	(4.9)	246	(16.6)	1,482	(98.1)
Indiana	5,943	(61.8)	2,710	(28.2)	334	(3.5)	622	(6.5)	9,609	(95.6)
Kansas	4,959	(60.2)	1,794	(21.8)	673	(8.2)	811	(9.8)	8,237	(98.8)
Maine	1,822	(87.8)	65	(3.1)	125	(6.0)	63	(3.0)	2,075	(89.8)
Minnesota	6,438	(57.5)	2,552	(22.8)	1,516	(13.5)	685	(6.1)	11,191	(97.3)
Mississippi	415	(18.1)	1,646	(71.7)	199	(8.7)	37	(1.6)	2,297	(100.0)
Missouri	3,119	(50.9)	2,521	(41.1)	338	(5.5)	150	(2.4)	6,128	(99.4)
Montana	1,795	(85.0)	20	(0.9)	218	(10.3)	78	(3.7)	2,111	(97.7)
New Jersey**	7,319	(27.0)	9,437	(34.9)	4,633	(17.1)	5,670	(21.0)	27,059	(95.9)
New York ^{††}	24,620	(22.8)	46,179	(42.7)	5,993	(5.5)	31,383	(29.0)	108,175	(93.5)
New York City	9,220	(11.5)	38,574	(48.1)	5,368	(6.7)	27,112	(33.8)	80,274	(95.8)
New York State	15,400	(55.2)	7,605	(27.3)	625	(2.2)	4,271	(15.3)	27,901	(87.3)
Ohio	14,684	(54.7)	10,402	(38.8)	727	(2.7)	1,012	(3.8)	26,825	(95.4)
Oklahoma	3,539	(62.2)	1,019	(17.9)	585	(10.3)	543	(9.5)	5,686	(93.3)
Oregon	7,145	(74.8)	491	(5.1)	797	(8.3)	1,118	(11.7)	9,551	(95.6)
South Carolina	3,235	(50.1)	2,541	(39.4)	271	(4.2)	407	(6.3)	6,454	(99.8)
South Dakota	538	(73.0)	46	(6.2)	114	(15.5)	39	(5.3)	737	(100.0)
Tennessee	6,893	(43.4)	7,965	(50.1)	401	(2.5)	633	(4.0)	15,892	(97.1)
Texas ^{§§}	23,548	(30.7)	19,139	(24.9)	4,320	(5.6)	29,771	(38.8)	76,778	(99.1)
Utah	2,280	(65.4)	75	(2.2)	271	(7.8)	859	(24.6)	3,485	(92.2)
Virginia	9,253	(38.1)	10,625	(43.7)	1,530	(6.3)	2,886	(11.9)	24,294	(93.6)
West Virginia	1,720	(86.0)	221	(11.1)	36	(1.8)	22	(1.1)	1,999	(100.0)
Total	153,045	(36.8)	148,261	(35.7)	26,933	(6.5)	87,240	(21.0)	415,479	(95.5)^{†††}
Abortion rate^{¶¶}	8.6		31.8		16.0		18.6		14.4	
Abortion ratio^{***}	141		483		250		218		219	

* Data from 28 reporting areas; excludes 24 reporting areas (Arizona, California, Connecticut, Florida, Hawaii, Illinois, Iowa, Kentucky, Louisiana, Maryland, Massachusetts, Michigan, Nebraska, Nevada, New Hampshire, New Mexico, North Carolina, North Dakota, Pennsylvania, Rhode Island, Vermont, Washington, Wisconsin, and Wyoming) that did not report, did not report by race/ethnicity, or did not meet reporting standards.

† Percentages for the individual component categories might not add to 100 because of rounding.

§ Calculated as the number of abortions reported by known race/ethnicity divided by the sum of abortions reported by known and unknown race/ethnicity.

¶ Because reporting is not mandatory, information could not be obtained for all abortions performed in the District of Columbia.

** Data from hospitals and licensed ambulatory care facilities only; because reporting is not mandatory for private physicians and women's centers, information could not be obtained for all abortions performed in New Jersey.

†† Non-Hispanic categories include abortions for women whose ethnicity was reported as unknown; previous evaluation has shown that most reports without ethnicity are for non-Hispanic women.

§§ Reporting form contains only one question for race and ethnicity; therefore, abortions reported for women of white, black, and other races (Asian and Native American) are not explicitly identified as non-Hispanic.

¶¶ Number of abortions obtained by women in a given race/ethnicity group per 1,000 women in that same group. For each state, abortions for women of unknown race/ethnicity were distributed according to the distribution of abortions among women of known race/ethnicity for that state.

*** Number of abortions obtained by women in a given race/ethnicity group per 1,000 live births to women in that same race/ethnicity group. For each state, abortions for women of unknown race/ethnicity were distributed according to the distribution of abortions among women of known race/ethnicity for that state.

††† Percentage based on a total of 435,121 abortions reported among the areas that met reporting standards for race/ethnicity.

TABLE 13. Reported abortions, by known race of women who obtained an abortion and reporting area of occurrence — selected reporting areas,* United States, 2010

State/Area	White		Black		Other		Total abortions reported by known race	
	No.	(%) [†]	No.	(%)	No.	(%)	No.	% all reported abortions [§]
Alabama	4,060	(39.7)	5,910	(57.7)	267	(2.6)	10,237	(99.6)
Alaska	946	(59.0)	135	(8.4)	522	(32.6)	1,603	(93.5)
Arkansas	2,507	(55.4)	1,610	(35.5)	412	(9.1)	4,529	(99.9)
Colorado	7,788	(72.1)	899	(8.3)	2,109	(19.5)	10,796	(96.3)
Delaware	2,286	(49.0)	2,197	(47.1)	183	(3.9)	4,666	(100.0)
District of Columbia [¶]	669	(24.2)	1,497	(54.1)	600	(21.7)	2,766	(95.5)
Georgia	8,323	(27.4)	20,256	(66.7)	1,780	(5.9)	30,359	(87.8)
Idaho	1,315	(91.4)	22	(1.5)	101	(7.0)	1,438	(95.2)
Indiana	6,440	(65.4)	3,031	(30.8)	369	(3.8)	9,840	(97.9)
Iowa	4,164	(77.1)	662	(12.3)	573	(10.6)	5,399	(100.0)
Kansas	5,381	(65.5)	1,846	(22.5)	984	(12.0)	8,211	(98.5)
Louisiana	3,021	(38.7)	4,526	(58.0)	255	(3.3)	7,802	(87.9)
Maine	2,095	(90.9)	80	(3.5)	130	(5.6)	2,305	(99.7)
Michigan	11,591	(51.0)	10,220	(45.0)	906	(4.0)	22,717	(97.5)
Minnesota	6,885	(61.0)	2,661	(23.6)	1,749	(15.5)	11,295	(98.2)
Mississippi	451	(19.6)	1,646	(71.7)	199	(8.7)	2,296	(100.0)
Missouri	3,260	(53.1)	2,528	(41.2)	347	(5.7)	6,135	(99.5)
Montana	1,874	(88.1)	21	(1.0)	232	(10.9)	2,127	(98.5)
New Jersey**	9,946	(36.4)	11,965	(43.7)	5,447	(19.9)	27,358	(97.0)
North Carolina	12,060	(42.6)	14,972	(52.9)	1,253	(4.4)	28,285	(91.4)
North Dakota	1,026	(79.5)	0	(0.0)	265	(20.5)	1,291	(100.0)
Ohio	15,127	(57.3)	10,528	(39.9)	743	(2.8)	26,398	(93.9)
Oklahoma	4,250	(69.7)	1,084	(17.8)	763	(12.5)	6,097	(100.0)
Oregon	8,026	(85.2)	518	(5.5)	880	(9.3)	9,424	(94.3)
Pennsylvania	19,011	(51.8)	15,393	(42.0)	2,287	(6.2)	36,691	(99.8)
Rhode Island	2,894	(76.1)	693	(18.2)	215	(5.7)	3,802	(90.9)
South Carolina	3,623	(56.1)	2,553	(39.5)	282	(4.4)	6,458	(99.9)
South Dakota	557	(76.4)	47	(6.4)	125	(17.1)	729	(98.9)
Tennessee	7,468	(47.0)	7,975	(50.2)	457	(2.9)	15,900	(97.1)
Virginia	12,099	(48.9)	11,033	(44.6)	1,622	(6.6)	24,754	(95.4)
West Virginia	1,739	(87.0)	223	(11.2)	37	(1.9)	1,999	(100.0)
Wisconsin ^{††}	5,170	(69.6)	1,808	(24.3)	448	(6.0)	7,426	(97.8)
Total	176,052	(51.6)	138,539	(40.6)	26,542	(7.8)	341,133	(95.7)***
Abortion rate^{§§}	8.1		27.6		17.4		11.5	
Abortion ratio^{¶¶}	129		403		275		190	

* Data from 32 reporting areas; excludes 20 areas (Arizona, California, Connecticut, Florida, Hawaii, Illinois, Kentucky, Maryland, Massachusetts, Nebraska, Nevada, New Hampshire, New Mexico, New York City, New York State, Texas, Utah, Vermont, Washington, and Wyoming) that did not report, did not report by race, or did not meet reporting standards.

† Percentages for the individual component categories might not add to 100 because of rounding.

§ Calculated as the number of abortions reported by known race, divided by the sum of abortions reported by known and unknown race.

¶ Because reporting is not mandatory, information could not be obtained for all abortions performed in the District of Columbia.

** Data from hospitals and licensed ambulatory care facilities only; because reporting is not mandatory for private physicians and women's centers, information could not be obtained for all abortions performed in New Jersey.

†† Includes residents only.

§§ Number of abortions obtained by women in a given racial group per 1,000 women in that same group. For each state, abortions for women of unknown race were distributed according to the distribution of abortions among women of known race for that state.

¶¶ Number of abortions obtained by women in a given racial group per 1,000 live births to women in that same racial group. For each state, abortions for women of unknown race were distributed according to the distribution of abortions among women of known race for that state.

*** Percentage based on a total of 356,525 abortions reported among the areas that met reporting standards for race.

TABLE 14. Reported abortions, by known race of women who obtained an abortion and year — selected reporting areas,* United States, 2001–2010

Race	Year										% change			
	2001	2002	2003	2004	2005	2006	2007	2008	2009	2010	2001 to 2005	2006 to 2010	2009 to 2010	2001 to 2010
% of abortions														
White	54.2	54.4	54.6	54.6	54.1	53.9	53.7	52.4	51.4	50.8	-0.2	-5.8	-1.2	-6.3
Black	37.9	38	37.8	37.8	38	38.4	38.4	40	40.6	41.2	0.3	7.3	1.5	8.7
Other	7.9	7.6	7.6	7.6	7.9	7.8	7.9	7.6	7.5	8.1	0.0	3.8	8.0	2.5
Abortion rate[†]														
White	9.2	9.1	9.3	9.2	8.9	9.1	8.9	8.9	8.4	8.1	-3.3	-11.0	-3.6	-12.0
Black	30.9	30.2	30.3	29.4	28.7	29.2	28.3	29.5	28.7	28.2	-7.1	-3.4	-1.7	-8.7
Other	27.3	24.8	23.9	22.6	22.1	21.4	20.6	19.4	17.9	18.2	-19.0	-15.0	1.7	-33.3
Abortion ratio[§]														
White	147	146	146	143	138	137	133	134	130	129	-6.1	-5.8	-0.8	-12.2
Black	449	452	450	428	411	400	384	403	404	414	-8.5	3.5	2.5	-7.8
Other	416	376	358	334	332	319	300	289	275	292	-20.2	-8.5	6.2	-29.8
Total (no.)	339,605	332,793	334,237	325,982	320,616	327,931	321,522	321,280	309,565	300,176	—	—	—	—

* Data from 25 reporting areas; by year, these reporting areas represent 51%–72% of the abortions reported by race during 2001–2010. Excludes 27 areas (Alaska, Arizona, California, Connecticut, Florida, Hawaii, Illinois, Kentucky, Louisiana, Maine, Maryland, Massachusetts, Michigan, Nebraska, Nevada, New Hampshire, New Mexico, New York City, New York State, Rhode Island, South Dakota, Texas, Utah, Vermont, Washington, West Virginia, and Wyoming) that did not report, did not report by race, or did not meet reporting standards for ≥ 1 year.

[†] Number of abortions obtained by women in a given racial group per 1,000 women in that same racial group. For each state, abortions for women of unknown race were distributed according to the distribution of abortions among women of known race for that state.

[§] Number of abortions obtained by women in a given racial group per 1,000 live births to women in that same racial group. For each state, abortions for women of unknown race were distributed according to the distribution of abortions among women of known race for that state.

TABLE 15. Reported abortions, by known ethnicity of women who obtained an abortion and reporting area of occurrence — selected reporting areas,* United States, 2010

State/Area	Hispanic		Non-Hispanic		Total abortions reported by known ethnicity	
	No.	(%) [†]	No.	(%)	No.	% of all reported abortions [§]
Alabama	367	(3.6)	9,825	(96.4)	10,192	(99.1)
Alaska	22	(1.4)	1,509	(98.6)	1,531	(89.3)
Arizona	3,654	(36.4)	6,386	(63.6)	10,040	(87.8)
Arkansas	277	(6.1)	4,249	(93.9)	4,526	(99.9)
Colorado	2,690	(25.3)	7,935	(74.7)	10,625	(94.8)
Delaware	400	(8.6)	4,229	(91.4)	4,629	(99.2)
District of Columbia [¶]	311	(11.2)	2,455	(88.8)	2,766	(95.5)
Georgia	6,138	(19.2)	25,809	(80.8)	31,947	(92.4)
Hawaii	215	(7.4)	2,671	(92.6)	2,886	(94.2)
Idaho	246	(16.5)	1,242	(83.5)	1,488	(98.5)
Indiana	622	(6.4)	9,048	(93.6)	9,670	(96.2)
Kansas	811	(9.8)	7,443	(90.2)	8,254	(99.1)
Maine	63	(3.0)	2,016	(97.0)	2,079	(90.0)
Minnesota	685	(6.1)	10,538	(93.9)	11,223	(97.5)
Mississippi	37	(1.6)	2,260	(98.4)	2,297	(100.0)
Missouri	150	(2.4)	6,000	(97.6)	6,150	(99.8)
Montana	78	(3.7)	2,038	(96.3)	2,116	(98.0)
New Jersey**	5,670	(20.8)	21,653	(79.2)	27,323	(96.8)
New York ^{††}	31,383	(27.1)	84,341	(72.9)	115,724	(100.0)
New York City	27,112	(32.4)	56,638	(67.6)	83,750	(100.0)
New York State	4,271	(13.4)	27,703	(86.6)	31,974	(100.0)
Ohio	1,012	(3.6)	26,890	(96.4)	27,902	(99.2)
Oklahoma	543	(9.5)	5,143	(90.5)	5,686	(93.3)
Oregon	1,118	(11.3)	8,778	(88.7)	9,896	(99.1)
South Carolina	407	(6.3)	6,047	(93.7)	6,454	(99.8)
South Dakota	39	(5.3)	698	(94.7)	737	(100.0)
Tennessee	633	(3.9)	15,478	(96.1)	16,111	(98.4)
Texas	29,771	(38.8)	47,007	(61.2)	76,778	(99.1)
Utah	859	(24.3)	2,681	(75.7)	3,540	(93.7)
Virginia	2,886	(11.5)	22,124	(88.5)	25,010	(96.4)
West Virginia	22	(1.1)	1,977	(98.9)	1,999	(100.0)
Wisconsin ^{§§}	782	(10.3)	6,809	(89.7)	7,591	(100.0)
Total	91,891	(20.5)	355,279	(79.5)	447,170	(97.8)^{†††}
Abortion rate^{¶¶}	17.3		13.2		13.9	
Abortion ratio^{***}	204		213		211	

* Data from 31 reporting areas; excludes 21 areas (California, Connecticut, Florida, Illinois, Iowa, Kentucky, Louisiana, Maryland, Massachusetts, Michigan, Nebraska, Nevada, New Hampshire, New Mexico, North Carolina, North Dakota, Pennsylvania, Rhode Island, Vermont, Washington, and Wyoming) that did not report, did not report by ethnicity, or did not meet reporting standards.

† Percentages for the individual component categories might not add to 100 because of rounding.

§ Calculated as the number of abortions reported by known ethnicity divided by the sum of abortions reported by known and unknown ethnicity.

¶ Because reporting is not mandatory, information could not be obtained for all abortions performed in the District of Columbia.

** Data from hospitals and licensed ambulatory care facilities only; because reporting is not mandatory for private physicians and women's centers, information could not be obtained for all abortions performed in New Jersey.

†† Non-Hispanic category includes abortions for women whose ethnicity was reported as unknown; previous evaluation has shown that most reports without ethnicity are for non-Hispanic women.

§§ Includes residents only.

¶¶ Number of abortions obtained by women in a given ethnic group per 1,000 women in that same group. For each state, abortions for women of unknown ethnicity were distributed according to the distribution of abortions among women of known ethnicity for that state.

*** Number of abortions obtained by women in a given ethnic group per 1,000 live births to women in that same ethnic group. For each state, abortions for women of unknown ethnicity were distributed according to the distribution of abortions among women of known ethnicity for that state.

††† Percentage based on a total of 457,214 abortions reported among the areas that met reporting standards for ethnicity.

TABLE 16. Reported abortions, by known ethnicity of women who obtained an abortion and year — selected reporting areas,* United States, 2001–2010

Ethnicity	Year										% change			
	2001	2002	2003	2004	2005	2006	2007	2008	2009	2010	2001 to 2005	2006 to 2010	2009 to 2010	2001 to 2010
% of abortions														
Hispanic	21.0	21.9	22.0	22.3	22.1	22.9	22.7	23.0	22.7	22.9	5.2	0.0	0.9	9.0
Non-Hispanic	79.0	78.1	78.0	77.7	77.9	77.1	77.3	77.0	77.3	77.1	-1.4	0.0	-0.3	-2.4
Abortion rate[†]														
Hispanic	23.7	23.8	23.2	22.4	21.3	21.9	20.7	20.2	18.7	17.8	-10.1	-18.7	-4.8	-24.9
Non-Hispanic	15.1	15.0	15.0	14.7	14.6	14.9	14.7	14.5	14.2	13.7	-3.3	-8.1	-3.5	-9.3
Abortion ratio[§]														
Hispanic	244	244	237	228	216	219	208	209	204	210	-11.5	-4.1	2.9	-13.9
Non-Hispanic	245	244	240	235	233	229	223	223	222	220	-4.9	-3.9	-0.9	-10.2
Total (no.)	354,527	352,728	348,636	334,613	334,209	348,080	342,451	337,778	330,533	318,729	—	—	—	—

* Data from 18 reporting areas; by year, these reporting areas represent 59%–63% of the abortions reported by ethnicity during 2001–2010. Excludes 34 areas (Alaska, Arizona, California, Connecticut, District of Columbia, Florida, Georgia, Hawaii, Illinois, Indiana, Iowa, Kentucky, Louisiana, Maine, Maryland, Massachusetts, Michigan, Montana, Nebraska, Nevada, New Hampshire, New Mexico, New York State, North Carolina, North Dakota, Oklahoma, Pennsylvania, Rhode Island, South Dakota, Vermont, Virginia, Washington, West Virginia, and Wyoming) that did not report, did not report by ethnicity, or did not meet reporting standards for ≥ 1 year.

[†] Number of abortions obtained by women in a given ethnic group per 1,000 women in that same ethnic group. For each state, abortions for women of unknown ethnicity were distributed according to the distribution of abortions among women of known ethnicity for that state.

[§] Number of abortions obtained by women in a given ethnic group per 1,000 live births to women in that same ethnic group. For each state, abortions for women of unknown ethnicity were distributed according to the distribution of abortions among women of known ethnicity for that state.

TABLE 17. Reported abortions, by known marital status and reporting area of occurrence — selected reporting areas,* United States, 2010

State/Area	Married		Unmarried		Total abortions reported by known marital status	
	No.	(%) [†]	No.	(%)	No.	% of all reported abortions [§]
Alabama	1,079	(10.5)	9,181	(89.5)	10,260	(99.8)
Alaska	289	(17.1)	1,397	(82.9)	1,686	(98.3)
Arizona	1,848	(16.4)	9,423	(83.6)	11,271	(98.5)
Arkansas	630	(13.9)	3,896	(86.1)	4,526	(99.9)
Colorado	2,059	(19.0)	8,776	(81.0)	10,835	(96.7)
Delaware	468	(10.0)	4,198	(90.0)	4,666	(100.0)
District of Columbia [¶]	249	(9.1)	2,489	(90.9)	2,738	(94.5)
Hawaii	456	(15.1)	2,558	(84.9)	3,014	(98.4)
Idaho	227	(15.0)	1,283	(85.0)	1,510	(100.0)
Illinois**	4,351	(11.8)	32,492	(88.2)	36,843	(95.4)
Indiana	1,489	(14.9)	8,494	(85.1)	9,983	(99.4)
Iowa	939	(17.5)	4,442	(82.5)	5,381	(99.7)
Kansas	1,233	(14.8)	7,083	(85.2)	8,316	(99.8)
Kentucky	583	(14.8)	3,346	(85.2)	3,929	(100.0)
Maine	351	(15.3)	1,941	(84.7)	2,292	(99.2)
Michigan	2,505	(10.8)	20,795	(89.2)	23,300	(100.0)
Minnesota	1,705	(15.1)	9,608	(84.9)	11,313	(98.3)
Mississippi	181	(7.9)	2,109	(92.1)	2,290	(99.7)
Missouri	982	(16.1)	5,129	(83.9)	6,111	(99.2)
Montana	367	(17.2)	1,763	(82.8)	2,130	(98.6)
New Jersey ^{††}	3,437	(12.2)	24,704	(87.8)	28,141	(99.7)
New Mexico	670	(14.4)	3,978	(85.6)	4,648	(97.3)
New York City	11,391	(14.2)	69,106	(85.8)	80,497	(96.1)
North Carolina	5,613	(18.9)	24,016	(81.1)	29,629	(95.7)
North Dakota	212	(16.4)	1,079	(83.6)	1,291	(100.0)
Ohio	3,529	(13.1)	23,493	(86.9)	27,022	(96.1)
Oklahoma	873	(14.3)	5,224	(85.7)	6,097	(100.0)
Oregon	1,817	(19.7)	7,413	(80.3)	9,230	(92.4)
Pennsylvania	4,539	(12.3)	32,238	(87.7)	36,777	(100.0)
Rhode Island	613	(15.5)	3,337	(84.5)	3,950	(94.5)
South Carolina	947	(14.7)	5,516	(85.3)	6,463	(100.0)
South Dakota	115	(15.6)	622	(84.4)	737	(100.0)
Tennessee	2,190	(14.0)	13,415	(86.0)	15,605	(95.3)
Texas	13,084	(16.9)	64,375	(83.1)	77,459	(100.0)
Utah	1,025	(29.2)	2,486	(70.8)	3,511	(92.9)
Virginia	4,285	(17.3)	20,490	(82.7)	24,775	(95.5)
West Virginia	315	(15.8)	1,681	(84.2)	1,996	(99.8)
Wisconsin**	1,217	(15.6)	6,602	(84.4)	7,819	(99.9)
Total	77,863	(14.7)	450,178	(85.3)	528,041	(97.8)^{¶¶}
Abortion ratio^{§§}	52		438		208	

* Data from 38 reporting areas; excludes 14 areas (California, Connecticut, Florida, Georgia, Louisiana, Maryland, Massachusetts, Nebraska, Nevada, New Hampshire, New York State, Vermont, Washington, and Wyoming) that did not report, did not report by marital status, or did not meet reporting standards.

[†] Percentages for the individual component categories might not add to 100 because of rounding.

[§] Calculated as the number of abortions reported by known marital status divided by the sum of abortions reported by known and unknown marital status.

[¶] Because reporting is not mandatory, information could not be obtained for all abortions performed in the District of Columbia.

** Includes residents only.

^{††} Data from hospitals and licensed ambulatory care facilities only; because reporting is not mandatory for private physicians and women's centers, information could not be obtained for all abortions performed in New Jersey.

^{§§} Number of abortions obtained by women by marital status per 1,000 live births to women of the same marital status. For each state, abortions for women of unknown marital status were distributed according to the distribution of abortions among women of known marital status for that state.

^{¶¶} Percentage based on a total of 540,127 abortions reported among the areas that met reporting standards for marital status.

TABLE 18. Reported abortions, by known number of previous live births and reporting area of occurrence — selected reporting areas,* United States, 2010

State/Area	No. of previous live births										Total reported by known number of prior live births	% of all reported abortions [§]
	0		1		2		3		≥4			
	No.	(%) [†]	No.	(%)	No.	(%)	No.	(%)	No.	(%)		
Alabama	3,943	(38.4)	3,002	(29.2)	2,090	(20.3)	829	(8.1)	413	(4.0)	10,277	(100.0)
Alaska	777	(45.5)	388	(22.7)	296	(17.3)	144	(8.4)	103	(6.0)	1,708	(99.6)
Arizona	5,069	(44.4)	2,626	(23.0)	2,093	(18.3)	1,015	(8.9)	613	(5.4)	11,416	(99.8)
Arkansas	1,673	(36.9)	1,301	(28.7)	947	(20.9)	419	(9.2)	192	(4.2)	4,532	(100.0)
Colorado	5,461	(49.8)	2,370	(21.6)	1,874	(17.1)	779	(7.1)	474	(4.3)	10,958	(97.8)
Georgia	12,221	(38.0)	8,747	(27.2)	6,593	(20.5)	2,880	(9.0)	1,730	(5.4)	32,171	(93.0)
Hawaii	1,572	(59.5)	518	(19.6)	295	(11.2)	160	(6.1)	95	(3.6)	2,640	(86.2)
Idaho	661	(43.8)	341	(22.6)	297	(19.7)	136	(9.0)	75	(5.0)	1,510	(100.0)
Indiana	3,640	(36.3)	2,769	(27.6)	2,123	(21.1)	962	(9.6)	547	(5.4)	10,041	(99.9)
Iowa	2,296	(42.6)	1,324	(24.6)	1,067	(19.8)	452	(8.4)	252	(4.7)	5,391	(99.9)
Kansas	3,338	(40.1)	2,135	(25.6)	1,684	(20.2)	773	(9.3)	403	(4.8)	8,333	(100.0)
Kentucky	1,540	(39.2)	1,123	(28.6)	828	(21.1)	280	(7.1)	158	(4.0)	3,929	(100.0)
Louisiana	3,826	(46.8)	1,976	(24.2)	1,434	(17.5)	623	(7.6)	320	(3.9)	8,179	(92.2)
Maine	1,205	(52.2)	541	(23.4)	360	(15.6)	142	(6.1)	62	(2.7)	2,310	(100.0)
Michigan [¶]	9,230	(39.6)	6,281	(26.9)	4,495	(19.3)	2,006	(8.6)	1,295	(5.6)	23,307	(100.0)
Minnesota	4,859	(42.3)	2,813	(24.5)	2,195	(19.1)	985	(8.6)	639	(5.6)	11,491	(99.9)
Mississippi	784	(34.3)	715	(31.3)	501	(21.9)	180	(7.9)	106	(4.6)	2,286	(99.5)
Missouri	2,504	(40.6)	1,694	(27.5)	1,165	(18.9)	484	(7.9)	315	(5.1)	6,162	(100.0)
Montana	1,055	(48.8)	504	(23.3)	356	(16.5)	162	(7.5)	83	(3.8)	2,160	(100.0)
Nebraska	1,020	(41.4)	594	(24.1)	459	(18.6)	227	(9.2)	164	(6.7)	2,464	(100.0)
Nevada	3,372	(43.6)	1,791	(23.2)	1,445	(18.7)	689	(8.9)	433	(5.6)	7,730	(99.3)
New Jersey**	11,294	(40.1)	7,762	(27.5)	5,359	(19.0)	2,219	(7.9)	1,555	(5.5)	28,189	(99.9)
New Mexico	1,603	(36.1)	340	(7.7)	1,030	(23.2)	140	(3.2)	1,324	(29.8)	4,437	(92.8)
New York City	34,129	(41.9)	21,955	(26.9)	15,392	(18.9)	6,350	(7.8)	3,663	(4.5)	81,489	(97.3)
North Carolina	10,513	(38.9)	6,876	(25.4)	5,322	(19.7)	2,453	(9.1)	1,860	(6.9)	27,024	(87.3)
North Dakota	538	(41.7)	359	(27.8)	229	(17.7)	103	(8.0)	62	(4.8)	1,291	(100.0)
Ohio	9,598	(35.7)	7,578	(28.2)	5,762	(21.4)	2,499	(9.3)	1,448	(5.4)	26,885	(95.6)
Oklahoma	2,334	(38.3)	1,619	(26.6)	1,247	(20.5)	581	(9.5)	316	(5.2)	6,097	(100.0)
Oregon	4,764	(48.5)	2,264	(23.0)	1,710	(17.4)	722	(7.3)	371	(3.8)	9,831	(98.4)
Pennsylvania	15,091	(41.0)	10,107	(27.5)	6,769	(18.4)	3,117	(8.5)	1,694	(4.6)	36,778	(100.0)
Rhode Island	1,894	(45.6)	1,079	(26.0)	702	(16.9)	311	(7.5)	169	(4.1)	4,155	(99.4)
South Carolina	2,757	(42.7)	1,822	(28.2)	1,186	(18.4)	481	(7.4)	217	(3.4)	6,463	(100.0)
South Dakota	315	(42.7)	168	(22.8)	148	(20.1)	74	(10.0)	32	(4.3)	737	(100.0)
Tennessee	5,236	(32.7)	4,499	(28.1)	3,466	(21.6)	1,602	(10.0)	1,222	(7.6)	16,025	(97.9)
Texas	28,676	(37.0)	20,419	(26.4)	16,698	(21.6)	7,530	(9.7)	4,110	(5.3)	77,433	(100.0)
Utah	1,576	(42.3)	840	(22.6)	706	(19.0)	363	(9.8)	237	(6.4)	3,722	(98.5)
Virginia	9,730	(39.3)	6,825	(27.6)	5,131	(20.7)	2,098	(8.5)	960	(3.9)	24,744	(95.4)
Washington	9,920	(47.0)	5,058	(24.0)	3,693	(17.5)	1,577	(7.5)	860	(4.1)	21,108	(99.9)
West Virginia	686	(34.3)	626	(31.3)	433	(21.7)	183	(9.2)	71	(3.6)	1,999	(100.0)
Total	220,700	(40.3)	143,749	(26.3)	107,580	(19.7)	46,730	(8.5)	28,643	(5.2)	547,402	(97.6)^{††}

* Data from 39 reporting areas; excludes 13 areas (California, Connecticut, Delaware, District of Columbia, Florida, Illinois, Maryland, Massachusetts, New Hampshire, New York State, Vermont, Wisconsin and Wyoming) that did not report, did not report by number of previous births, or did not meet reporting standards.

[†] Percentages for the individual component categories might not add to 100 because of rounding.

[§] Calculated as the number of abortions reported by known number of previous live births, divided by the sum of abortions reported by known and unknown number of previous live births.

[¶] Recorded as number of previous pregnancies carried to term.

** Data from hospitals and licensed ambulatory care facilities only; because reporting is not mandatory for private physicians and women's centers, information could not be obtained for all abortions performed in New Jersey.

^{††} Percentage based on a total of 560,950 abortions reported among the areas that met reporting standards for the number of previous births.

TABLE 19. Reported abortions, by known number of previous induced abortions and reporting area of occurrence — selected reporting areas,* United States, 2010

State/Area	No. of previous induced abortions								Total abortions reported by known no. of previous induced abortions	
	0		1		2		≥3		No.	% of all reported abortions [§]
Alabama	6,657	(64.8)	2,523	(24.5)	773	(7.5)	324	(3.2)	10,277	(100.0)
Alaska	1,094	(64.5)	367	(21.6)	143	(8.4)	93	(5.5)	1,697	(99.0)
Arizona	6,995	(61.3)	2,983	(26.2)	993	(8.7)	431	(3.8)	11,402	(99.7)
Arkansas	2,848	(64.5)	1,058	(23.9)	365	(8.3)	147	(3.3)	4,418	(97.5)
Colorado	7,116	(64.4)	2,729	(24.7)	857	(7.8)	346	(3.1)	11,048	(98.6)
Georgia	20,585	(65.3)	6,709	(21.3)	2,610	(8.3)	1,607	(5.1)	31,511	(91.1)
Idaho	1,055	(69.9)	331	(21.9)	85	(5.6)	39	(2.6)	1,510	(100.0)
Indiana	6,278	(62.5)	2,369	(23.6)	886	(8.8)	513	(5.1)	10,046	(100.0)
Iowa	3,467	(64.4)	1,294	(24.0)	418	(7.8)	202	(3.8)	5,381	(99.7)
Kansas	4,988	(59.9)	2,090	(25.1)	795	(9.5)	458	(5.5)	8,331	(100.0)
Kentucky	2,430	(61.8)	923	(23.5)	323	(8.2)	253	(6.4)	3,929	(100.0)
Louisiana	5,929	(69.0)	1,840	(21.4)	572	(6.7)	246	(2.9)	8,587	(96.8)
Maine	1,487	(65.4)	517	(22.7)	200	(8.8)	69	(3.0)	2,273	(98.4)
Michigan	11,606	(49.8)	6,075	(26.1)	3,137	(13.5)	2,489	(10.7)	23,307	(100.0)
Minnesota	6,712	(58.3)	2,789	(24.2)	1,122	(9.8)	881	(7.7)	11,504	(100.0)
Mississippi	1,488	(65.0)	533	(23.3)	196	(8.6)	71	(3.1)	2,288	(99.6)
Missouri	3,722	(60.4)	1,456	(23.6)	590	(9.6)	394	(6.4)	6,162	(100.0)
Montana	781	(36.2)	756	(35.0)	351	(16.3)	272	(12.6)	2,160	(100.0)
Nebraska	1,493	(60.6)	599	(24.3)	215	(8.7)	157	(6.4)	2,464	(100.0)
Nevada	4,349	(56.3)	1,972	(25.5)	826	(10.7)	581	(7.5)	7,728	(99.2)
New Jersey [¶]	18,213	(64.6)	4,927	(17.5)	2,667	(9.5)	2,393	(8.5)	28,200	(99.9)
New York	48,619	(44.5)	27,813	(25.4)	16,251	(14.9)	16,648	(15.2)	109,331	(94.5)
New York City	34,461	(42.4)	20,792	(25.6)	12,619	(15.5)	13,410	(16.5)	81,282	(97.1)
New York State	14,158	(50.5)	7,021	(25.0)	3,632	(12.9)	3,238	(11.5)	28,049	(87.7)
North Carolina	15,723	(59.1)	6,809	(25.6)	2,665	(10.0)	1,424	(5.3)	26,621	(86.0)
North Dakota	853	(66.1)	280	(21.7)	108	(8.4)	50	(3.9)	1,291	(100.0)
Ohio	13,634	(52.8)	7,093	(27.5)	3,021	(11.7)	2,085	(8.1)	25,833	(91.9)
Oklahoma	3,828	(62.8)	1,493	(24.5)	495	(8.1)	281	(4.6)	6,097	(100.0)
Oregon	5,593	(56.6)	2,441	(24.7)	1,074	(10.9)	779	(7.9)	9,887	(99.0)
Pennsylvania	20,112	(54.7)	9,009	(24.5)	4,324	(11.8)	3,333	(9.1)	36,778	(100.0)
Rhode Island	2,013	(48.6)	1,050	(25.3)	532	(12.8)	549	(13.2)	4,144	(99.1)
South Carolina	3,596	(55.6)	1,633	(25.3)	714	(11.0)	520	(8.0)	6,463	(100.0)
South Dakota	494	(67.0)	158	(21.4)	49	(6.6)	36	(4.9)	737	(100.0)
Tennessee	8,210	(51.1)	4,262	(26.5)	2,036	(12.7)	1,570	(9.8)	16,078	(98.2)
Texas	43,483	(56.2)	20,892	(27.0)	8,314	(10.7)	4,734	(6.1)	77,423	(99.9)
Utah	2,546	(67.4)	754	(19.9)	259	(6.9)	221	(5.8)	3,780	(100.0)
Virginia	13,142	(51.9)	7,096	(28.0)	3,175	(12.5)	1,913	(7.6)	25,326	(97.6)
Washington	11,916	(56.5)	5,167	(24.5)	2,296	(10.9)	1,719	(8.1)	21,098	(99.9)
West Virginia	1,105	(55.3)	531	(26.6)	212	(10.6)	150	(7.5)	1,998	(99.9)
Total	314,160	(55.4)	141,321	(24.9)	63,649	(11.2)	47,978	(8.5)	567,108	(96.9)**

* Data from 38 reporting areas; excludes 14 areas (California, Connecticut, Delaware, District of Columbia, Florida, Hawaii, Illinois, Maryland, Massachusetts, New Hampshire, New Mexico, Vermont, Wisconsin and Wyoming) that did not report, did not report by the number of previous induced abortions, or did not meet reporting standards.

† Percentages for the individual component categories might not add to 100 because of rounding.

§ Calculated as the number of abortions reported by known number of previous induced abortions divided by the sum of abortions reported by known and unknown number of previous induced abortions.

¶ Data from hospitals and licensed ambulatory care facilities only; because reporting is not mandatory for private physicians and women's centers, information could not be obtained for all abortions performed in New Jersey.

** Percentage based on a total of 585,081 abortions reported among the areas that met reporting standards for the number of previous abortions.

TABLE 20. Reported abortions, by known race, age group, and marital status of women who obtained an abortion — selected reporting areas, United States, 2010

Characteristic	White		Black		Other		Total	
	No.	(%)*	No.	(%)	No.	(%)	No.	(%)
Age group (yrs)[†]								
<15	569	(0.4)	843	(0.7)	91	(0.4)	1,503	(0.5)
15-19	22,029	(14.6)	18,465	(15.3)	2,799	(11.8)	43,293	(14.7)
15	1,261	(0.8)	1,322	(1.1)	155	(0.7)	2,738	(0.9)
16	2,236	(1.5)	2,035	(1.7)	296	(1.2)	4,567	(1.5)
17	3,555	(2.4)	3,092	(2.6)	456	(1.9)	7,103	(2.4)
18	6,498	(4.3)	5,168	(4.3)	851	(3.6)	12,517	(4.2)
19	8,479	(5.6)	6,848	(5.7)	1,041	(4.4)	16,368	(5.5)
20-24	50,708	(33.5)	41,222	(34.2)	6,952	(29.3)	98,882	(33.5)
25-29	36,136	(23.9)	30,222	(25.1)	5,871	(24.7)	72,229	(24.4)
30-34	22,034	(14.6)	18,266	(15.1)	4,176	(17.6)	44,476	(15.1)
35-39	13,890	(9.2)	9,080	(7.5)	2,742	(11.6)	25,712	(8.7)
≥40	5,790	(3.8)	2,530	(2.1)	1,100	(4.6)	9,420	(3.2)
Marital status[§]								
Married	22,937	(16.7)	7,851	(8.3)	6,167	(28.8)	36,955	(14.6)
Unmarried	114,795	(83.3)	86,765	(91.7)	15,277	(71.2)	216,837	(85.4)

* Percentages for the individual component categories might not add to 100 because of rounding.

[†] Data from 30 reporting areas; excludes 22 areas (Arizona, California, Connecticut, Florida, Hawaii, Illinois, Kentucky, Maryland, Massachusetts, Nebraska, Nevada, New Hampshire, New Mexico, New York City, New York State, Pennsylvania, Texas, Utah, Vermont, Washington, Wisconsin and Wyoming) that did not report, did not report by race or age, or did not meet reporting standards.

[§] Data from 28 reporting areas; excludes 24 areas (Arizona, California, Connecticut, Florida, Georgia, Hawaii, Illinois, Kentucky, Louisiana, Maryland, Massachusetts, Nebraska, Nevada, New Hampshire, New Mexico, New York City, New York State, Pennsylvania, Texas, Utah, Vermont, Washington, Wisconsin and Wyoming) that did not report, did not report by race or marital status, or did not meet reporting standards.

TABLE 21. Reported abortions, by known race/ethnicity, age group, and marital status of women who obtained an abortion — selected reporting areas, United States, 2010

Characteristic	Non-Hispanic						Hispanic		Total	
	White		Black		Other		No.	(%)	No.	(%)
	No.	(%)*	No.	(%)	No.	(%)				
Age group (yrs)[†]										
<15	498	(0.3)	912	(0.6)	79	(0.3)	395	(0.5)	1,884	(0.5)
15-19	21,362	(14.0)	22,406	(15.2)	2,670	(9.9)	12,079	(13.9)	58,517	(14.1)
15	1,141	(0.7)	1,532	(1.0)	135	(0.5)	728	(0.8)	3,536	(0.9)
16	2,125	(1.4)	2,590	(1.8)	266	(1.0)	1,305	(1.5)	6,286	(1.5)
17	3,472	(2.3)	4,008	(2.7)	424	(1.6)	2,040	(2.3)	9,944	(2.4)
18	6,163	(4.0)	6,172	(4.2)	776	(2.9)	3,410	(3.9)	16,521	(4.0)
19	8,461	(5.5)	8,104	(5.5)	1,069	(4.0)	4,596	(5.3)	22,230	(5.4)
20-24	51,057	(33.5)	48,523	(32.8)	7,252	(27.0)	28,258	(32.5)	135,090	(32.6)
25-29	36,968	(24.2)	37,422	(25.3)	6,699	(24.9)	22,105	(25.4)	103,194	(24.9)
30-34	22,474	(14.7)	23,017	(15.6)	5,011	(18.7)	13,958	(16.0)	64,460	(15.6)
35-39	14,039	(9.2)	11,772	(8.0)	3,588	(13.4)	7,568	(8.7)	36,967	(8.9)
≥40	6,140	(4.0)	3,816	(2.6)	1,565	(5.8)	2,636	(3.0)	14,157	(3.4)
Marital Status[§]										
Married	22,690	(16.8)	12,926	(9.4)	8,834	(34.2)	12,897	(16.3)	57,347	(15.2)
Unmarried	112,063	(83.2)	124,288	(90.6)	17,025	(65.8)	66,335	(83.7)	319,711	(84.8)

* Percentages for the individual component categories might not add to 100 because of rounding.

[†] Data from 28 reporting areas; excludes 24 areas (Arizona, California, Connecticut, Florida, Hawaii, Illinois, Iowa, Kentucky, Louisiana, Maryland, Massachusetts, Michigan, Nebraska, Nevada, New Hampshire, New Mexico, North Carolina, North Dakota, Pennsylvania, Rhode Island, Vermont, Washington, Wisconsin and Wyoming) that did not report, did not report by race/ethnicity or age, or did not meet reporting standards.

[§] Data from 27 reporting areas; excludes 25 areas (Arizona, California, Connecticut, Florida, Hawaii, Illinois, Iowa, Kentucky, Louisiana, Maryland, Massachusetts, Michigan, Nebraska, Nevada, New Hampshire, New Mexico, New York State, North Carolina, North Dakota, Pennsylvania, Rhode Island, Vermont, Washington, Wisconsin and Wyoming) that did not report, did not report by race/ethnicity or marital status, or did not meet reporting standards.

TABLE 22. Reported abortions, by weeks of gestation and age group, race, and race/ethnicity of women who obtained an abortion — selected reporting areas, United States, 2010

Characteristic	Weeks of gestation											
	≤8		9-13		14-15		16-17		18-20		≥21	
	No.	(%)	No.	(%)	No.	(%)	No.	(%)	No.	(%)	No.	(%)
Age group (yrs) ^{*,†}												
<15	1,058	(45.0)	816	(34.7)	130	(5.5)	97	(4.1)	112	(4.8)	137	(5.8)
15-19	40,739	(56.4)	23,030	(31.9)	3,370	(4.7)	1,886	(2.6)	1,866	(2.6)	1,373	(1.9)
20-24	106,825	(64.0)	46,000	(27.6)	6,016	(3.6)	3,260	(2.0)	2,866	(1.7)	1,995	(1.2)
25-29	86,867	(68.6)	30,988	(24.5)	3,655	(2.9)	2,014	(1.6)	1,922	(1.5)	1,272	(1.0)
30-34	55,906	(70.2)	18,467	(23.2)	2,056	(2.6)	1,142	(1.4)	1,239	(1.6)	818	(1.0)
35-39	32,936	(71.4)	10,080	(21.9)	1,181	(2.6)	670	(1.5)	763	(1.7)	500	(1.1)
≥40	12,859	(73.4)	3,496	(20.0)	392	(2.2)	273	(1.6)	302	(1.7)	186	(1.1)
Total	337,190	(65.9)	132,877	(26.0)	16,800	(3.3)	9,342	(1.8)	9,070	(1.8)	6,281	(1.2)
Race ^{*,§}												
White	101,244	(68.5)	36,713	(24.8)	4004	(2.7)	2,381	(1.6)	2,195	(1.5)	1,305	(0.9)
Black	66,534	(57.1)	38,324	(32.9)	4966	(4.3)	2,945	(2.5)	2,392	(2.1)	1,354	(1.2)
Other	15,971	(68.6)	5,269	(22.6)	799	(3.4)	528	(2.3)	476	(2.0)	250	(1.1)
Total	183,749	(63.9)	80,306	(27.9)	9,769	(3.4)	5,854	(2.0)	5,063	(1.8)	2,909	(1.0)
Race/Ethnicity ^{*,¶}												
Non-Hispanic												
White	93,867	(69.7)	31,830	(23.6)	3,476	(2.6)	1,890	(1.4)	2,039	(1.5)	1,486	(1.1)
Black	82,004	(60.1)	41,178	(30.2)	5,257	(3.9)	2,933	(2.1)	2,989	(2.2)	2,076	(1.5)
Other	18,503	(71.7)	5,123	(19.9)	787	(3.1)	495	(1.9)	515	(2.0)	376	(1.5)
Hispanic	56,990	(69.3)	19,102	(23.2)	2,656	(3.2)	1,180	(1.4)	1,318	(1.6)	963	(1.2)
Total	251,364	(66.3)	97,233	(25.7)	12,176	(3.2)	6,498	(1.7)	6,861	(1.8)	4,901	(1.3)

* Row percentages might not add to 100 because of rounding.

† Data from 36 reporting areas; excludes 16 reporting areas (California, Connecticut, Delaware, Florida, Illinois, Kentucky, Maryland, Massachusetts, Mississippi, Nebraska, New Hampshire, New York State, Pennsylvania, Vermont, Wisconsin and Wyoming) that did not report, did not report by age or gestational age, or did not meet reporting standards.

§ Data from 28 reporting areas; excludes 24 reporting areas (Arizona, California, Connecticut, Delaware, Florida, Hawaii, Illinois, Kentucky, Maryland, Massachusetts, Mississippi, Nebraska, Nevada, New Hampshire, New Mexico, New York City, New York State, Pennsylvania, Texas, Utah, Vermont, Washington, Wisconsin and Wyoming) that did not report, did not report by race or gestational age, or did not meet reporting standards.

¶ Data from 25 reporting areas; excludes 27 reporting areas (Arizona, California, Connecticut, Delaware, Florida, Hawaii, Illinois, Iowa, Kentucky, Louisiana, Maryland, Massachusetts, Michigan, Mississippi, Nebraska, Nevada, New Hampshire, New Mexico, New York State, North Carolina, North Dakota, Pennsylvania, Rhode Island, Vermont, Washington, Wisconsin and Wyoming) that did not report, did not report by race/ethnicity or gestational age, or did not meet reporting standards.

TABLE 23. Reported abortions obtained at ≤13 weeks, distribution by week at ≤13 weeks' gestation and by age group, race, and race/ethnicity of women who obtained an abortion — selected reporting areas, United States, 2010

Characteristic	Weeks of gestation																
	≤6		7		8		9		10		11		12		13		
	No.	(%)	No.	(%)	No.	(%)	No.	(%)	No.	(%)	No.	(%)	No.	(%)	No.	(%)	
Age group (yrs) ^{*,†}																	
<15	479	(25.6)	304	(16.2)	275	(14.7)	229	(12.2)	205	(10.9)	169	(9.0)	113	(6.0)	100	(5.3)	
15-19	19,467	(30.5)	11,499	(18.0)	9,773	(15.3)	7,382	(11.6)	5,363	(8.4)	4,332	(6.8)	3,449	(5.4)	2,504	(3.9)	
20-24	55,708	(36.5)	28,750	(18.8)	22,367	(14.6)	15,549	(10.2)	10,833	(7.1)	8,413	(5.5)	6,355	(4.2)	4,850	(3.2)	
25-29	47,075	(39.9)	23,016	(19.5)	16,776	(14.2)	11,036	(9.4)	7,319	(6.2)	5,443	(4.6)	4,172	(3.5)	3,018	(2.6)	
30-34	30,171	(40.6)	15,089	(20.3)	10,646	(14.3)	6,788	(9.1)	4,352	(5.9)	3,222	(4.3)	2,379	(3.2)	1,726	(2.3)	
35-39	17,953	(41.7)	8,739	(20.3)	6,244	(14.5)	3,789	(8.8)	2,396	(5.6)	1,686	(3.9)	1,248	(2.9)	961	(2.2)	
≥40	7,422	(45.4)	3,198	(19.6)	2,239	(13.7)	1,323	(8.1)	796	(4.9)	603	(3.7)	463	(2.8)	311	(1.9)	
Total	178,275	(37.9)	90,595	(19.3)	68,320	(14.5)	46,096	(9.8)	31,264	(6.7)	23,868	(5.1)	18,179	(3.9)	13,470	(2.9)	
Race^{*,§}																	
White	53,287	(38.6)	27,859	(20.2)	20,098	(14.6)	12,600	(9.1)	8,703	(6.3)	6,666	(4.8)	5,051	(3.7)	3,693	(2.7)	
Black	28,839	(27.5)	21,070	(20.1)	16,625	(15.9)	11,994	(11.4)	9,121	(8.7)	7,282	(6.9)	5,727	(5.5)	4,200	(4.0)	
Other	8,691	(40.9)	4,315	(20.3)	2,965	(14.0)	1,807	(8.5)	1,178	(5.5)	851	(4.0)	691	(3.3)	742	(3.5)	
Total	90,817	(34.4)	53,244	(20.2)	39,688	(15.0)	26,401	(10.0)	19,002	(7.2)	14,799	(5.6)	11,469	(4.3)	8,635	(3.3)	
Race/Ethnicity^{*,¶}																	
Non-Hispanic																	
White	51,754	(41.2)	24,333	(19.4)	17,780	(14.1)	10,942	(8.7)	7,537	(6.0)	5,733	(4.6)	4,331	(3.4)	3,287	(2.6)	
Black	38,795	(31.5)	24,164	(19.6)	19,045	(15.5)	13,423	(10.9)	9,843	(8.0)	7,744	(6.3)	6,104	(5.0)	4,064	(3.3)	
Other	10,838	(45.9)	4,599	(19.5)	3,066	(13.0)	1,835	(7.8)	1,183	(5.0)	792	(3.4)	643	(2.7)	670	(2.8)	
Hispanic	32,535	(42.8)	13,823	(18.2)	10,632	(14.0)	6,770	(8.9)	4,660	(6.1)	3,329	(4.4)	2,425	(3.2)	1,918	(2.5)	
Total	133,922	(38.4)	66,919	(19.2)	50,523	(14.5)	32,970	(9.5)	23,223	(6.7)	17,598	(5.0)	13,503	(3.9)	9,939	(2.9)	

* Row percentages might not add to 100 because of rounding.

† Data from 36 reporting areas; excludes 16 reporting areas (Connecticut, Delaware, Florida, Illinois, Kentucky, Maryland, Massachusetts, Mississippi, Nebraska, New Hampshire, New York State, Pennsylvania, Vermont, Wisconsin and Wyoming) that did not report, did not report by age or gestational age, or did not meet reporting standards.

§ Data from 28 reporting areas; excludes 24 reporting areas (Arizona, California, Connecticut, Delaware, Florida, Hawaii, Illinois, Kentucky, Maryland, Massachusetts, Mississippi, Nebraska, Nevada, New Hampshire, New Mexico, New York City, New York State, Pennsylvania, Texas, Utah, Vermont, Washington, Wisconsin and Wyoming) that did not report, did not report by race or gestational age, or did not meet reporting standards.

¶ Data from 25 reporting areas; excludes 27 reporting areas (Arizona, California, Connecticut, Delaware, Florida, Hawaii, Illinois, Iowa, Kentucky, Louisiana, Maryland, Massachusetts, Michigan, Mississippi, Nebraska, Nevada, New Hampshire, New Mexico, New York State, North Carolina, North Dakota, Pennsylvania, Rhode Island, Vermont, Washington, Wisconsin and Wyoming) that did not report, did not report by race/ethnicity or gestational age, or did not meet reporting standards.

TABLE 24. Reported abortions, by known weeks of gestation and method type — selected reporting areas,* United States, 2010

Type of procedure	Weeks of gestation												Total	
	≤8		9-13		14-15		16-17		18-20		≥21			
	No.	(%) [†]	No.	(%)	No.	(%)	No.	(%)	No.	(%)	No.	(%)	No.	(%)
Curettage[§]														
≤13 weeks gestation	223,375	(73.0)	115,168	(96.4)	NA	NA	NA	NA	NA	NA	NA	NA	338,543	(72.9)
>13 weeks gestation	NA	NA	NA	NA	15,037	(98.2)	8,342	(96.1)	8,104	(94.1)	5,690	(91.2)	37,173	(8.0)
Medical[¶]														
≤8 weeks gestation	81,194	(26.5)	NA	NA	NA	NA	NA	NA	NA	NA	NA	NA	81,194	(17.5)
>8 weeks gestation	NA	NA	4,007	(3.4)	104	(0.7)	93	(1.1)	229	(2.7)	237	(3.8)	4,670	(1.0)
Intrauterine instillation	—**	—	13	(0.0)	24	(0.2)	23	(0.3)	51	(0.6)	60	(1.0)	171	(0.0)
Other	1,392	(0.5)	246	(0.2)	150	(1.0)	221	(2.5)	224	(2.6)	253	(4.1)	2,486	(0.5)
Total	305,961	(100.0)	119,434	(100.0)	15,315	(100.0)	8,679	(100.0)	8,608	(100.0)	6,240	(100.0)	464,237	(100.0)

Abbreviation: NA = not applicable.

* Data from 31 reporting areas; excludes 21 areas (Alabama, Arizona, California, Connecticut, Delaware, Florida, Hawaii, Illinois, Kentucky, Louisiana, Maryland, Massachusetts, Mississippi, Nebraska, New Hampshire, New York State, Pennsylvania, Tennessee, Vermont, Wisconsin and Wyoming) that did not report, did not report by method type or gestational age, did not meet reporting standards, or did not have medical abortion as a specific category on their reporting form.

[†] For each gestational age category, percentages of all method types might not add to 100 because of rounding.

[§] Includes aspiration curettage, suction curettage, manual vacuum aspiration, menstrual extraction, sharp curettage, and dilation and evacuation procedures.

[¶] The administration of medication or medications to induce an abortion; at ≤8 weeks' gestation, typically involves the use of mifepristone and misoprostol; at >8 weeks' gestation, typically involves the use of vaginal prostaglandins.

** Intrauterine instillations reported at ≤12 weeks' gestation have not been included with known values.

TABLE 25. Number of deaths and case-fatality rates* for abortion-related deaths reported to CDC, by type of abortion — United States, 1973—2009†

Year	Type of abortion			Total	Case-fatality rate per 100,000
	Induced		Unknown**		
	Legal§	Illegal¶			
1973–1977					2.09
1973	25	19	3	47	
1974	26	6	1	33	
1975	29	4	1	34	
1976	11	2	1	14	
1977	17	4	0	21	
1978–1982					0.78
1978	9	7	0	16	
1979	22	0	0	22	
1980	9	1	2	12	
1981	8	1	0	9	
1982	11	1	0	12	
1983–1987					0.66
1983	11	1	0	12	
1984	12	0	0	12	
1985	11	1	1	13	
1986	11	0	2	13	
1987	7	2	0	9	
1988–1992					0.74
1988	16	0	0	16	
1989	12	1	0	13	
1990	9	0	0	9	
1991	11	1	0	12	
1992	10	0	0	10	
1993–1997					0.92
1993	6	1	2	9	
1994	10	2	0	12	
1995	4	0	0	4	
1996	9	0	0	9	
1997	7	0	0	7	
1998–2002					0.63
1998	9	0	0	9	
1999	4	0	0	4	
2000	11	0	0	11	
2001	7	1	0	8	
2002	10	0	0	10	
2003–2009					0.67
2003	10	0	0	10	
2004	7	1	0	8	
2005	7	0	0	7	
2006	7	0	0	7	
2007	6	0	0	6	
2008	12	0	0	12	
2009	8	0	0	8	
Total	411	56	13	480	0.81

* Number of legal induced abortion-related deaths per 100,000 reported legal induced abortions. Because a substantial number of legal induced abortions occurred outside reporting areas that provided data to CDC, national case-fatality rates (i.e., number of legal induced abortion-related deaths per 100,000 reported legal induced abortions in the United States) were calculated with denominator data from a more complete source (12). Case-fatality rates were computed for consecutive 5-year periods during 1973-2002 and then during a 7-year period during 2003-2009, because rates based on ≤ 20 cases are highly variable (38).

† Certain numbers might differ from those in reports published previously because additional information has been supplied to CDC subsequent to publication.

§ An abortion is defined as “legal” if it was performed by a licensed clinician.

¶ An abortion is defined as “illegal” if it was performed by any person other than a licensed clinician.

** Unknown whether abortion was induced or spontaneous.

The *Morbidity and Mortality Weekly Report (MMWR)* Series is prepared by the Centers for Disease Control and Prevention (CDC) and is available free of charge in electronic format. To receive an electronic copy each week, visit *MMWR*'s free subscription page at <http://www.cdc.gov/mmwr/mmwrsubscribe.html>. Paper copy subscriptions are available through the Superintendent of Documents, U.S. Government Printing Office, Washington, DC 20402; telephone 202-512-1800.

Address all inquiries about the *MMWR* Series, including material to be considered for publication, to Editor, *MMWR* Series, Mailstop E-90, CDC, 1600 Clifton Rd., N.E., Atlanta, GA 30333 or to mmwrq@cdc.gov.

All material in the *MMWR* Series is in the public domain and may be used and reprinted without permission; citation as to source, however, is appreciated.

Use of trade names and commercial sources is for identification only and does not imply endorsement by the U.S. Department of Health and Human Services.

References to non-CDC sites on the Internet are provided as a service to *MMWR* readers and do not constitute or imply endorsement of these organizations or their programs by CDC or the U.S. Department of Health and Human Services. CDC is not responsible for the content of these sites. URL addresses listed in *MMWR* were current as of the date of publication.

ISSN: 1546-0738