

Notifiable Diseases and Mortality Tables

TABLE I. Provisional cases of infrequently reported notifiable diseases (<1,000 cases reported during the preceding year) — United States, week ending November 9, 2013 (45th week)*

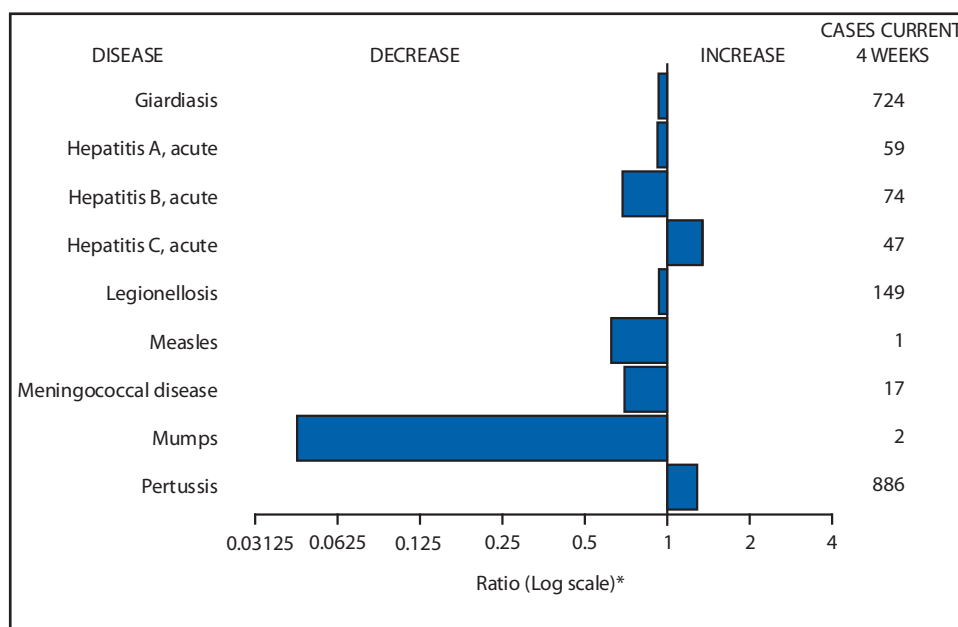
Disease	Current week	Cum 2013	5-year weekly average [†]	Total cases reported for previous years					States reporting cases during current week (No.)
				2012	2011	2010	2009	2008	
Anthrax	—	—	—	—	1	—	1	—	
Arboviral diseases ^{§, ¶} :									
California serogroup virus disease	—	74	0	81	137	75	55	62	
Eastern equine encephalitis virus disease	—	6	—	15	4	10	4	4	
Powassan virus disease	—	8	0	7	16	8	6	2	
St. Louis encephalitis virus disease	—	—	0	3	6	10	12	13	
Western equine encephalitis virus disease	—	—	—	—	—	—	—	—	
Babesiosis	14	1,211	10	940	1,128	NN	NN	NN	RI (2), NY (12)
Botulism, total	—	107	3	168	153	112	118	145	
foodborne	—	3	0	27	24	7	10	17	
infant	—	93	2	123	97	80	83	109	
other (wound and unspecified)	—	11	1	18	32	25	25	19	
Brucellosis	1	74	1	114	79	115	115	80	LA (1)
Chancroid	1	12	0	15	8	24	28	25	MO (1)
Cholera	—	1	0	17	40	13	10	5	
Cyclosporiasis [§]	1	655	1	123	151	179	141	139	TX (1)
Diphtheria	—	—	—	1	—	—	—	—	
<i>Haemophilus influenzae</i> ,** invasive disease (age <5 yrs):									
serotype b	1	16	0	30	14	23	35	30	OH (1)
nonsertotype b	1	144	3	205	145	200	236	244	WA (1)
unknown serotype	1	187	4	210	226	223	178	163	NC (1)
Hansen disease [§]	1	42	2	82	82	98	103	80	NYC (1)
Hantavirus pulmonary syndrome [§]	—	10	0	30	23	20	20	18	
Hemolytic uremic syndrome, postdiarrheal [§]	3	192	6	274	290	266	242	330	MO (1), OK (1), CA (1)
Influenza-associated pediatric mortality ^{§, ††}	2	155	5	52	118	61	358	90	FL (1), AR (1)
Listeriosis	7	551	15	727	870	821	851	759	NY (1), PA (2), OH (1), MD (1), GA (1), CO (1)
Measles ^{§§}	1	165	0	55	220	63	71	140	WA (1)
Meningococcal disease, invasive ^{¶¶} :									
A, C, Y, and W-135	2	105	5	161	257	280	301	330	WA (2)
serogroup B	2	61	3	110	159	135	174	188	WA (2)
other serogroup	—	10	0	20	20	12	23	38	
unknown serogroup	5	266	7	260	323	406	482	616	NY (1), PA (1), WA (1), CA (2)
Novel influenza A virus infections ^{***}	—	21	642	313	14	4	43,774	2	
Plague	—	3	—	4	3	2	8	3	
Poliomyelitis, paralytic	—	—	—	—	—	—	1	—	
Polio virus Infection, nonparalytic [§]	—	—	—	—	—	—	—	—	
Psittacosis [§]	—	4	0	2	2	4	9	8	
Q fever, total [§]	—	122	2	135	134	131	113	120	
acute	—	93	1	113	110	106	93	106	
chronic	—	29	0	22	24	25	20	14	
Rabies, human	—	—	0	1	6	2	4	2	
Rubella ^{†††}	—	8	0	9	4	5	3	16	
Rubella, congenital syndrome	—	—	—	3	—	—	2	—	
SARS-CoV [§]	—	—	—	—	—	—	—	—	
Smallpox [§]	—	—	—	—	—	—	—	—	
Streptococcal toxic-shock syndrome [§]	2	124	2	194	168	142	161	157	VA (1), NV (1)
Syphilis, congenital (age <1 yr) ^{§§§}	—	149	6	322	360	377	423	431	
Tetanus	—	14	1	37	36	26	18	19	
Toxic-shock syndrome (staphylococcal) [§]	1	55	1	65	78	82	74	71	IN (1)
Trichinellosis	—	14	0	18	15	7	13	39	
Tularemia	2	179	2	149	166	124	93	123	OK (2)
Typhoid fever	4	261	5	354	390	467	397	449	NY (1), WA (2), CA (1)
Vancomycin-intermediate <i>Staphylococcus aureus</i> [§]	1	158	2	134	82	91	78	63	OH (1)
Vancomycin-resistant <i>Staphylococcus aureus</i> [§]	—	—	—	2	—	2	1	—	
Vibriosis (noncholera <i>Vibrio</i> species infections) [§]	5	929	13	1,111	832	846	789	588	MD (2), WA (1), CA (2)
Viral hemorrhagic fever ^{¶¶¶}	—	—	—	—	—	1	NN	NN	
Yellow fever	—	—	—	—	—	—	—	—	

See Table 1 footnotes on next page.

TABLE I. (Continued) Provisional cases of infrequently reported notifiable diseases (<1,000 cases reported during the preceding year) — United States, week ending November 9, 2013 (45th week)*

—: No reported cases. N: Not reportable. NN: Not Nationally Notifiable. Cum: Cumulative year-to-date counts.
 * Case counts for reporting year 2013 are provisional and subject to change. For further information on interpretation of these data, see <http://www.cdc.gov/nndss/document/ProvisionalNationalNotifiableDiseasesSurveillanceData20100927.pdf>.
 † Calculated by summing the incidence counts for the current week, the 2 weeks preceding the current week, and the 2 weeks following the current week, for a total of 5 preceding years. The total sum of incident cases is then divided by 25 weeks. Additional information is available at <http://www.cdc.gov/nndss/document/5yearweeklyaverage.pdf>.
 ‡ Not reportable in all states. Data from states where the condition is not reportable are excluded from this table except starting in 2007 for the arboviral diseases, STD data, and influenza-associated pediatric mortality, and in 2003 for SARS-CoV. Reporting exceptions are available at http://www.cdc.gov/nndss/document/SRCA_FINAL_REPORT_2006-2012_final.xlsx.
 § Includes both neuroinvasive and nonneuroinvasive. Updated weekly from reports to the Division of Vector-Borne Infectious Diseases, National Center for Zoonotic, Vector-Borne, and Enteric Diseases (ArboNET Surveillance). Data for West Nile virus are available in Table II.
 ** Data for *H. influenzae* (all ages, all serotypes) are available in Table II.
 †† Updated weekly from reports to the Influenza Division, National Center for Immunization and Respiratory Diseases. Since September 29, 2013, two influenza-associated pediatric deaths occurring during the 2013-14 influenza season have been reported. Since September 30, 2012, 169 influenza-associated pediatric death occurring during the 2012-13 influenza season have been reported.
 ‡‡ The one measles case reported for the current week was indigenous.
 ¶¶ Data for meningococcal disease (all serogroups) are available in Table II.
 *** CDC discontinued reporting of individual confirmed and probable cases of influenza A (H1N1)pdm09 virus infections on July 24, 2009. During 2009, four cases of human infection with novel influenza A viruses, different from the influenza A (H1N1)pdm09 virus, were reported to CDC. The four cases of novel influenza A virus infection reported to CDC during 2010, the fourteen cases reported during 2011, the 313 cases reported in 2012, and the 21 cases reported during 2013 are different from the influenza A (H1N1)pdm09 virus. Total case counts are provided by the Influenza Division, National Center for Immunization and Respiratory Diseases (NCIRD).
 ††† No rubella cases were reported for the current week.
 §§§ Updated weekly from reports to the Division of STD Prevention, National Center for HIV/AIDS, Viral Hepatitis, STD, and TB Prevention.
 ¶¶¶ There were no cases of viral hemorrhagic fever reported during the current week. See Table II for dengue hemorrhagic fever.

FIGURE I. Selected notifiable disease reports, United States, comparison of provisional 4-week totals November 9, 2013, with historical data



* Ratio of current 4-week total to mean of 15 4-week totals (from previous, comparable, and subsequent 4-week periods for the past 5 years). The point where the hatched area begins is based on the mean and two standard deviations of these 4-week totals.

Notifiable Disease Data Team and 122 Cities Mortality Data Team

Umed Ajani
 Deborah A. Adams Willie J. Anderson
 Lenee Blanton Rosaline Dhara
 Diana Harris Onweh Alan W. Schley
 Pearl C. Sharp

Morbidity and Mortality Weekly Report

TABLE II. Provisional cases of selected notifiable diseases, United States, weeks ending November 9, 2013, and November 10, 2012 (45th week)*

Reporting area	<i>Chlamydia trachomatis</i> infection					Coccidioidomycosis					Cryptosporidiosis				
	Current week	Previous 52 weeks		Cum 2013	Cum 2012	Current week	Previous 52 weeks		Cum 2013	Cum 2012	Current week	Previous 52 weeks		Cum 2013	Cum 2012
		Med	Max				Med	Max				Med	Max		
United States	10,546	26,437	29,442	1,144,311	1,239,629	196	204	311	8,547	16,039	62	104	422	6,968	7,123
New England	475	935	1,207	41,874	42,644	—	0	1	1	3	2	5	14	245	356
Connecticut	45	244	380	10,858	11,338	N	0	0	N	N	—	0	5	31	37
Maine	—	69	110	2,981	2,950	N	0	0	N	N	—	0	4	33	52
Massachusetts	430	456	688	20,573	20,454	—	0	0	—	—	2	2	7	116	141
New Hampshire	—	59	81	2,477	2,690	—	0	1	1	2	—	1	2	27	48
Rhode Island	—	80	160	3,595	3,763	—	0	0	—	1	—	0	2	8	14
Vermont	—	27	110	1,390	1,449	N	0	0	N	N	—	1	2	30	64
Mid. Atlantic	2,344	3,424	4,058	148,796	157,784	—	0	1	1	4	14	13	42	702	720
New Jersey	167	549	629	24,087	23,763	N	0	0	N	N	—	1	5	48	38
New York (Upstate)	801	747	1,909	32,045	31,763	N	0	0	N	N	6	4	16	224	211
New York City	473	1,077	1,301	47,389	54,721	N	0	0	N	N	—	1	5	62	109
Pennsylvania	903	1,027	1,284	45,275	47,537	—	0	1	1	4	8	7	30	368	362
E.N. Central	1,065	3,896	4,755	164,570	193,721	1	0	2	24	45	12	24	60	1,287	1,704
Illinois	33	978	1,450	42,357	59,161	N	0	0	N	N	—	4	16	200	156
Indiana	113	562	701	24,437	25,707	N	0	0	N	N	—	2	7	95	148
Michigan	465	862	1,303	37,316	41,444	—	0	2	15	25	1	5	14	231	326
Ohio	351	1,040	1,213	44,490	46,631	1	0	2	7	19	10	7	17	340	511
Wisconsin	103	437	550	15,970	20,778	—	0	1	2	1	1	8	24	421	563
W.N. Central	216	1,385	1,688	59,376	72,086	—	0	7	51	146	5	17	163	1,805	1,240
Iowa	15	201	243	8,724	10,085	N	0	0	N	N	—	5	149	1,220	307
Kansas	31	211	255	9,133	9,798	N	0	0	N	N	—	2	6	75	111
Minnesota	18	213	397	8,098	15,816	—	0	5	37	117	—	0	7	—	323
Missouri	124	526	635	23,400	24,411	—	0	3	13	14	2	4	9	174	213
Nebraska	1	110	222	4,537	5,966	—	0	1	1	1	3	2	11	128	147
North Dakota	4	47	77	2,109	2,555	—	0	0	—	14	—	1	6	69	34
South Dakota	23	75	109	3,375	3,455	N	0	0	N	N	—	2	17	139	105
S. Atlantic	2,819	5,392	6,538	236,423	251,056	—	0	2	6	6	8	18	53	871	1,000
Delaware	89	94	322	4,393	3,368	—	0	1	1	—	—	0	2	12	14
District of Columbia	115	109	284	5,235	5,958	—	0	1	—	—	N	0	0	N	N
Florida	—	1,551	1,777	67,758	68,447	N	0	0	N	N	—	8	23	344	404
Georgia	919	913	1,198	41,124	46,158	N	0	0	N	N	2	5	16	248	228
Maryland	—	466	881	20,456	22,106	—	0	1	5	6	2	1	4	53	79
North Carolina	966	947	1,772	42,352	46,299	N	0	0	N	N	—	0	25	109	86
South Carolina	—	529	770	23,053	24,105	N	0	0	N	N	3	1	7	77	58
Virginia	647	623	1,018	27,604	30,472	N	0	0	N	N	1	0	7	15	121
West Virginia	83	98	129	4,448	4,143	N	0	0	N	N	—	0	3	13	10
E.S. Central	216	1,858	2,206	78,862	91,381	—	0	0	—	—	3	5	17	275	259
Alabama	—	557	874	23,040	27,024	N	0	0	N	N	—	2	8	106	97
Kentucky	—	327	570	14,591	15,184	N	0	0	N	N	1	1	5	59	56
Mississippi	—	343	729	15,360	20,519	N	0	0	N	N	—	0	5	41	40
Tennessee	216	602	833	25,871	28,654	N	0	0	N	N	2	1	6	69	66
W.S. Central	498	3,541	8,645	156,505	158,147	—	0	1	4	3	8	11	46	641	483
Arkansas	204	301	383	12,869	14,732	N	0	0	N	N	1	0	4	36	38
Louisiana	245	406	2,110	17,522	22,644	—	0	1	4	3	1	4	31	289	129
Oklahoma	49	282	5,044	14,922	11,123	N	0	0	N	N	2	1	13	66	81
Texas	—	2,557	3,700	111,192	109,648	N	0	0	N	N	4	4	28	250	235
Mountain	859	1,672	2,019	72,929	81,667	166	131	232	5,876	11,879	5	8	49	571	757
Arizona	—	469	740	20,351	27,161	161	128	225	5,755	11,684	—	1	6	34	37
Colorado	344	406	586	17,852	18,845	N	0	0	N	N	—	1	4	44	95
Idaho	86	99	232	4,269	3,853	N	0	0	N	N	4	2	14	114	247
Montana	44	74	105	3,275	3,361	—	0	1	3	3	1	1	16	108	60
Nevada	166	220	314	9,764	9,699	5	1	6	70	103	—	0	2	16	12
New Mexico	151	215	402	10,027	10,229	—	0	2	19	34	—	1	3	31	89
Utah	68	143	169	6,196	6,682	—	1	4	27	50	—	1	7	75	185
Wyoming	—	27	67	1,195	1,837	—	0	1	2	5	—	0	25	149	32
Pacific	2,054	4,165	5,256	184,976	191,143	29	63	97	2,584	3,953	5	10	75	571	604
Alaska	61	108	146	4,845	4,816	N	0	0	N	N	—	0	1	3	6
California	1,417	3,151	4,259	141,425	147,302	29	63	90	2,579	3,951	1	6	15	261	330
Hawaii	—	126	157	5,443	5,585	N	0	0	N	N	—	0	1	1	5
Oregon	212	276	475	12,141	11,934	—	0	1	5	2	4	2	58	236	196
Washington	364	474	582	21,122	21,506	—	0	7	—	—	—	1	16	70	67
Territories															
American Samoa	—	—	—	—	82	N	—	—	N	N	N	—	—	N	N
C.N.M.I.	—	—	—	—	—	—	—	—	—	—	—	—	—	—	—
Guam	—	0	0	—	—	—	0	0	—	—	—	0	0	—	—
Puerto Rico	270	114	307	5,239	5,114	N	0	0	N	N	N	0	0	N	N
U.S. Virgin Islands	—	14	24	290	720	—	0	0	—	—	—	0	0	—	—

C.N.M.I.: Commonwealth of Northern Mariana Islands.

U: Unavailable. —: No reported cases. N: Not reportable. NN: Not Nationally Notifiable. Cum: Cumulative year-to-date counts. Med: Median. Max: Maximum.

* Case counts for reporting year 2013 are provisional and subject to change. For further information on interpretation of these data, see <http://www.cdc.gov/nndss/document/ProvisionalNationalNotifiableDiseasesSurveillanceData20100927.pdf>. Data for TB are displayed in Table IV, which appears quarterly.

Morbidity and Mortality Weekly Report

TABLE II. (Continued) Provisional cases of selected notifiable diseases, United States, weeks ending November 9, 2013, and November 10, 2012 (45th week)*

Reporting area	Dengue Virus Infection									
	Dengue Fever [†]					Dengue Hemorrhagic Fever [§]				
	Current week	Previous 52 weeks		Cum 2013	Cum 2012	Current week	Previous 52 weeks		Cum 2013	Cum 2012
	Med	Max				Med	Max			
United States	—	8	37	445	459	—	0	1	2	2
New England	—	0	4	24	14	—	0	0	—	—
Connecticut	—	0	2	14	13	—	0	0	—	—
Maine	—	0	1	1	—	—	0	0	—	—
Massachusetts	—	0	0	—	—	—	0	0	—	—
New Hampshire	—	0	1	1	—	—	0	0	—	—
Rhode Island	—	0	2	6	—	—	0	0	—	—
Vermont	—	0	1	2	1	—	0	0	—	—
Mid. Atlantic	—	2	11	121	109	—	0	1	1	—
New Jersey	—	0	0	—	—	—	0	0	—	—
New York (Upstate)	—	0	1	—	14	—	0	0	—	—
New York City	—	2	9	99	75	—	0	1	1	—
Pennsylvania	—	0	3	22	20	—	0	0	—	—
E.N. Central	—	1	4	46	49	—	0	0	—	1
Illinois	—	0	3	19	17	—	0	0	—	1
Indiana	—	0	2	6	7	—	0	0	—	—
Michigan	—	0	1	7	8	—	0	0	—	—
Ohio	—	0	2	7	6	—	0	0	—	—
Wisconsin	—	0	1	7	11	—	0	0	—	—
W.N. Central	—	0	2	19	17	—	0	1	—	—
Iowa	—	0	0	—	2	—	0	0	—	—
Kansas	—	0	1	6	1	—	0	0	—	—
Minnesota	—	0	1	8	8	—	0	0	—	—
Missouri	—	0	1	3	4	—	0	1	—	—
Nebraska	—	0	0	—	—	—	0	0	—	—
North Dakota	—	0	1	1	—	—	0	0	—	—
South Dakota	—	0	1	1	2	—	0	0	—	—
S. Atlantic	—	2	13	108	145	—	0	1	1	—
Delaware	—	0	1	2	—	—	0	0	—	—
District of Columbia	—	0	0	—	—	—	0	0	—	—
Florida	—	1	9	61	104	—	0	0	—	—
Georgia	—	0	2	5	11	—	0	0	—	—
Maryland	—	0	1	4	8	—	0	0	—	—
North Carolina	—	0	2	13	7	—	0	0	—	—
South Carolina	—	0	4	8	2	—	0	0	—	—
Virginia	—	0	4	14	13	—	0	1	1	—
West Virginia	—	0	1	1	—	—	0	0	—	—
E.S. Central	—	0	2	16	11	—	0	0	—	—
Alabama	—	0	2	6	4	—	0	0	—	—
Kentucky	—	0	0	—	1	—	0	0	—	—
Mississippi	—	0	1	1	1	—	0	0	—	—
Tennessee	—	0	2	9	5	—	0	0	—	—
W.S. Central	—	0	7	37	22	—	0	0	—	—
Arkansas	—	0	1	1	—	—	0	0	—	—
Louisiana	—	0	1	5	6	—	0	0	—	—
Oklahoma	—	0	2	3	1	—	0	0	—	—
Texas	—	0	7	28	15	—	0	0	—	—
Mountain	—	0	1	6	13	—	0	0	—	—
Arizona	—	0	0	—	8	—	0	0	—	—
Colorado	—	0	0	—	—	—	0	0	—	—
Idaho	—	0	1	1	1	—	0	0	—	—
Montana	—	0	1	2	2	—	0	0	—	—
Nevada	—	0	1	2	2	—	0	0	—	—
New Mexico	—	0	0	—	—	—	0	0	—	—
Utah	—	0	0	—	—	—	0	0	—	—
Wyoming	—	0	1	1	—	—	0	0	—	—
Pacific	—	1	7	68	79	—	0	0	—	1
Alaska	—	0	1	1	1	—	0	0	—	—
California	—	1	7	52	59	—	0	0	—	—
Hawaii	—	0	2	8	5	—	0	0	—	—
Oregon	—	0	0	—	—	—	0	0	—	—
Washington	—	0	1	7	14	—	0	0	—	1
Territories										
American Samoa	—	—	—	—	—	—	—	—	—	—
C.N.M.I.	—	—	—	—	—	—	—	—	—	—
Guam	—	0	0	—	—	—	0	0	—	—
Puerto Rico	—	178	406	7,148	3,715	—	1	9	43	78
U.S. Virgin Islands	—	0	42	—	81	—	0	0	—	1

C.N.M.I.: Commonwealth of Northern Mariana Islands.

U: Unavailable. —: No reported cases. N: Not reportable. NN: Not Nationally Notifiable. Cum: Cumulative year-to-date counts. Med: Median. Max: Maximum.

* Case counts for reporting year 2013 are provisional and subject to change. For further information on interpretation of these data, see <http://www.cdc.gov/nndss/document/ProvisionalNationalNotifiableDiseasesSurveillanceData20100927.pdf>. Data for TB are displayed in Table IV, which appears quarterly.

† Dengue Fever includes cases that meet criteria for Dengue Fever with hemorrhage, other clinical and unknown case classifications.

§ DHF includes cases that meet criteria for dengue shock syndrome (DSS), a more severe form of DHF.

Morbidity and Mortality Weekly Report

TABLE II. (Continued) Provisional cases of selected notifiable diseases, United States, weeks ending November 9, 2013, and November 10, 2012 (45th week)*

Reporting area	Ehrlichiosis/Anaplasmosis [†]														
	<i>Ehrlichia chaffeensis</i>					<i>Anaplasma phagocytophilum</i>					Undetermined				
	Current week	Previous 52 weeks		Cum 2013	Cum 2012	Current week	Previous 52 weeks		Cum 2013	Cum 2012	Current week	Previous 52 weeks		Cum 2013	Cum 2012
	Med	Max				Med	Max				Med	Max			
United States	4	9	160	1,064	941	9	23	79	1,206	2,206	1	3	22	180	175
New England	—	0	7	26	46	1	4	16	185	613	—	0	1	2	—
Connecticut	—	0	0	—	—	—	0	2	7	140	—	0	0	—	—
Maine	—	0	1	2	2	1	1	8	71	45	—	0	1	2	—
Massachusetts	—	0	1	—	25	—	0	9	27	299	—	0	0	—	—
New Hampshire	—	0	1	1	3	—	0	3	15	46	—	0	0	—	—
Rhode Island	—	0	7	21	16	—	0	14	44	74	—	0	0	—	—
Vermont	—	0	1	2	—	—	0	3	21	9	—	0	0	—	—
Mid. Atlantic	1	2	28	98	87	7	7	50	410	394	1	0	7	23	22
New Jersey	—	0	1	—	56	—	0	2	—	131	—	0	0	—	1
New York (Upstate)	1	1	28	64	14	7	6	49	367	236	1	0	5	21	7
New York City	—	0	5	33	11	—	0	4	43	20	—	0	1	2	—
Pennsylvania	—	0	1	1	6	—	0	1	—	7	—	0	2	—	14
E.N. Central	—	0	8	68	60	1	5	43	556	587	—	2	17	127	96
Illinois	—	0	7	36	36	—	0	2	7	10	—	0	0	—	1
Indiana	—	0	0	—	—	—	0	0	—	—	—	1	13	90	35
Michigan	—	0	0	—	2	—	0	0	—	6	—	0	3	6	—
Ohio	—	0	1	9	3	—	0	1	4	1	—	0	1	2	1
Wisconsin	—	0	6	23	19	1	5	43	545	570	—	0	4	29	59
W.N. Central	—	1	42	390	234	—	0	4	15	529	—	0	2	9	26
Iowa	N	0	0	N	N	N	0	0	N	N	N	0	0	N	N
Kansas	—	1	8	69	40	—	0	1	4	7	—	0	0	—	—
Minnesota	—	0	0	—	9	—	0	4	—	494	—	0	0	—	17
Missouri	—	0	39	315	185	—	0	2	9	23	—	0	2	9	8
Nebraska	—	0	1	5	—	—	0	1	2	2	—	0	0	—	—
North Dakota	—	0	0	—	—	—	0	0	—	3	—	0	0	—	—
South Dakota	—	0	1	1	—	—	0	0	—	—	—	0	0	—	1
S. Atlantic	2	1	20	151	313	—	0	3	26	48	—	0	2	5	11
Delaware	—	0	2	13	16	—	0	0	—	1	—	0	1	1	—
District of Columbia	N	0	0	N	N	N	0	0	N	N	N	0	0	N	N
Florida	—	0	3	21	19	—	0	2	4	3	—	0	0	—	—
Georgia	—	0	3	8	23	—	0	1	2	5	—	0	0	—	2
Maryland	—	0	5	29	36	—	0	1	4	3	—	0	1	1	—
North Carolina	—	0	12	64	96	—	0	3	11	20	—	0	0	—	2
South Carolina	—	0	1	4	2	—	0	0	—	—	—	0	0	—	—
Virginia	2	0	2	9	121	—	0	2	2	15	—	0	1	2	6
West Virginia	—	0	1	3	—	—	0	1	3	1	—	0	1	1	1
E.S. Central	1	1	14	151	99	—	0	1	8	25	—	0	3	5	11
Alabama	—	0	2	11	10	—	0	1	3	11	—	0	0	—	5
Kentucky	1	0	7	61	29	—	0	0	—	1	—	0	0	—	—
Mississippi	—	0	1	1	2	—	0	0	—	1	—	0	1	1	—
Tennessee	—	1	9	78	58	—	0	1	5	12	—	0	3	4	6
W.S. Central	—	2	116	180	102	—	0	13	6	10	—	0	0	—	1
Arkansas	—	2	16	130	82	—	0	1	4	7	—	0	0	—	—
Louisiana	—	0	1	2	1	—	0	1	1	—	—	0	0	—	1
Oklahoma	—	0	115	43	15	—	0	13	1	2	—	0	0	—	—
Texas	—	0	1	5	4	—	0	0	—	1	—	0	0	—	—
Mountain	—	0	0	—	—	—	0	0	—	—	—	0	1	2	2
Arizona	—	0	0	—	—	—	0	0	—	—	—	0	1	2	1
Colorado	N	0	0	N	N	N	0	0	N	N	N	0	0	N	N
Idaho	N	0	0	N	N	N	0	0	N	N	N	0	0	N	N
Montana	N	0	0	N	N	N	0	0	N	N	N	0	0	N	N
Nevada	—	0	0	—	—	—	0	0	—	—	—	0	0	—	—
New Mexico	N	0	0	N	N	N	0	0	N	N	N	0	0	N	N
Utah	—	0	0	—	—	—	0	0	—	—	—	0	1	—	1
Wyoming	—	0	0	—	—	—	0	0	—	—	—	0	0	—	—
Pacific	—	0	0	—	—	—	0	0	—	—	—	0	1	7	6
Alaska	N	0	0	N	N	N	0	0	N	N	N	0	0	N	N
California	—	0	0	—	—	—	0	0	—	—	—	0	1	7	6
Hawaii	N	0	0	N	N	N	0	0	N	N	N	0	0	N	N
Oregon	—	0	0	—	—	—	0	0	—	—	—	0	0	—	—
Washington	—	0	0	—	—	—	0	0	—	—	—	0	0	—	—
Territories															
American Samoa	N	—	—	N	N	N	—	—	N	N	N	—	—	N	N
C.N.M.I.	—	—	—	—	—	—	—	—	—	—	—	—	—	—	—
Guam	N	0	0	N	N	N	0	0	N	N	N	0	0	N	N
Puerto Rico	N	0	0	N	N	N	0	0	N	N	N	0	0	N	N
U.S. Virgin Islands	—	0	0	—	—	—	0	0	—	—	—	0	0	—	—

C.N.M.I.: Commonwealth of Northern Mariana Islands.

U: Unavailable. —: No reported cases. N: Not reportable. NN: Not Nationally Notifiable. Cum: Cumulative year-to-date counts. Med: Median. Max: Maximum.

* Case counts for reporting year 2013 are provisional and subject to change. For further information on interpretation of these data, see <http://www.cdc.gov/nndss/document/ProvisionalNationalNotifiableDiseasesSurveillanceData20100927.pdf>. Data for TB are displayed in Table IV, which appears quarterly.

† Cumulative total *E. ewingii* cases reported for year 2012 = 17, and 20 cases reported for 2013.

TABLE II. (Continued) Provisional cases of selected notifiable diseases, United States, weeks ending November 9, 2013, and November 10, 2012 (45th week)*

Reporting area	Giardiasis					Gonorrhea					<i>Haemophilus influenzae</i> , invasive† All ages, all serotypes				
	Current week	Previous 52 weeks		Cum 2013	Cum 2012	Current week	Previous 52 weeks		Cum 2013	Cum 2012	Current week	Previous 52 weeks		Cum 2013	Cum 2012
		Med	Max				Med	Max				Med	Max		
United States	140	259	388	11,727	13,139	2,448	6,188	7,237	270,102	289,452	19	68	190	2,895	2,810
New England	14	24	54	1,188	1,233	110	125	192	5,847	5,056	—	4	21	189	191
Connecticut	—	4	9	170	192	24	54	104	2,474	1,790	—	1	4	35	50
Maine	4	4	12	191	145	—	5	16	217	387	—	0	2	21	17
Massachusetts	6	13	26	582	615	85	56	103	2,667	2,238	—	2	5	101	97
New Hampshire	1	1	7	73	93	1	2	9	102	124	—	0	3	23	12
Rhode Island	1	0	7	34	41	—	6	25	307	436	—	0	11	—	8
Vermont	2	2	14	138	147	—	1	12	80	81	—	0	1	9	7
Mid. Atlantic	44	50	89	2,371	2,522	488	785	1,084	34,622	39,084	5	13	58	526	536
New Jersey	—	6	13	237	370	30	133	171	5,903	6,562	—	2	10	93	104
New York (Upstate)	22	18	67	874	806	118	125	519	5,505	6,427	4	3	35	151	141
New York City	8	14	24	639	771	97	253	332	11,180	12,783	—	2	7	97	108
Pennsylvania	14	12	27	621	575	243	273	323	12,034	13,312	1	5	13	185	183
E.N. Central	14	36	63	1,598	1,986	267	988	1,439	42,195	51,364	2	11	21	474	483
Illinois	—	6	11	237	305	9	257	428	10,424	15,678	—	3	10	140	135
Indiana	—	2	10	138	206	30	146	180	6,249	6,372	—	3	6	109	89
Michigan	3	10	27	452	492	75	196	378	8,786	10,815	—	2	5	75	71
Ohio	9	9	26	450	521	134	313	383	13,744	14,348	2	3	8	128	131
Wisconsin	2	7	14	321	462	19	81	122	2,992	4,151	—	0	4	22	57
W.N. Central	5	19	38	833	1,522	84	301	408	13,032	15,419	—	5	11	191	205
Iowa	—	4	15	227	228	4	28	44	1,234	1,768	—	0	0	—	—
Kansas	1	2	6	96	121	13	39	66	1,797	1,981	—	1	3	35	24
Minnesota	—	0	18	—	521	9	48	92	1,807	2,580	—	1	3	35	75
Missouri	2	5	14	229	287	58	147	184	6,403	6,970	—	2	7	90	69
Nebraska	2	3	9	149	177	—	24	49	869	1,223	—	0	3	21	23
North Dakota	—	1	4	34	55	—	6	14	276	283	—	0	1	7	14
South Dakota	—	2	9	98	133	—	15	27	646	614	—	0	1	3	—
S. Atlantic	13	41	85	1,898	2,124	714	1,373	1,757	61,212	64,698	5	16	37	726	670
Delaware	—	0	2	11	22	23	24	55	1,114	719	—	0	2	6	6
District of Columbia	—	1	3	39	73	42	41	92	1,987	2,113	—	0	2	11	2
Florida	—	21	56	981	943	—	401	472	17,331	17,126	—	5	13	227	193
Georgia	—	8	38	491	486	249	259	328	11,551	13,415	1	3	12	132	141
Maryland	9	4	9	196	214	—	109	193	4,517	4,765	1	2	4	90	75
North Carolina	N	0	0	N	N	270	263	544	11,810	13,116	3	2	12	129	86
South Carolina	1	2	7	111	111	—	142	207	6,291	6,741	—	2	11	101	57
Virginia	3	0	16	34	224	110	124	238	5,656	5,994	—	0	8	5	80
West Virginia	—	1	3	35	51	20	20	34	955	709	—	0	3	25	30
E.S. Central	—	3	9	137	151	43	481	634	21,124	25,937	—	5	12	221	180
Alabama	—	3	9	137	151	—	155	257	6,565	8,067	—	1	7	64	49
Kentucky	N	0	0	N	N	—	86	143	3,739	3,747	—	1	4	39	32
Mississippi	N	0	0	N	N	—	105	199	4,469	6,081	—	0	2	23	22
Tennessee	N	0	0	N	N	43	151	204	6,351	8,042	—	2	7	95	77
W.S. Central	2	7	15	295	285	136	931	2,555	41,900	41,900	3	3	20	153	167
Arkansas	—	2	8	100	86	64	73	122	3,236	3,827	—	0	3	23	26
Louisiana	2	4	11	195	199	64	116	657	5,259	7,440	—	1	4	35	52
Oklahoma	—	0	0	—	—	8	79	1,325	4,343	2,972	3	2	17	92	87
Texas	N	0	0	N	N	—	662	1,044	28,967	27,661	—	0	1	3	2
Mountain	9	18	37	841	1,071	132	260	346	11,283	11,700	2	6	14	251	262
Arizona	—	2	7	93	102	—	100	160	4,271	5,082	—	2	7	90	97
Colorado	3	4	18	177	326	62	53	100	2,390	2,393	1	1	4	58	49
Idaho	3	3	9	117	137	—	2	8	95	134	1	0	2	15	15
Montana	2	1	5	74	59	—	4	10	187	83	—	0	1	4	5
Nevada	1	1	6	72	83	48	46	76	2,171	1,946	—	0	1	11	19
New Mexico	—	2	5	81	82	13	33	55	1,457	1,645	—	1	3	35	42
Utah	—	5	9	202	247	9	15	26	678	379	—	1	2	33	30
Wyoming	—	0	6	25	35	—	1	3	34	38	—	0	1	5	5
Pacific	39	55	121	2,566	2,245	474	864	996	38,982	34,294	2	3	9	164	116
Alaska	1	1	7	74	82	17	18	40	875	592	—	0	3	19	12
California	24	34	78	1,731	1,446	365	723	862	32,374	28,989	—	1	5	39	24
Hawaii	—	1	3	38	25	—	14	26	583	710	—	1	2	24	19
Oregon	1	6	17	310	327	12	33	55	1,519	1,251	1	1	5	76	61
Washington	13	10	61	413	365	80	79	113	3,631	2,752	1	0	3	6	—
Territories	—	—	—	—	—	—	—	—	—	—	—	—	—	—	—
American Samoa	—	—	—	—	—	—	—	—	—	—	—	—	—	—	—
C.N.M.I.	—	—	—	—	—	—	—	—	—	—	—	—	—	—	—
Guam	—	0	1	—	2	—	0	0	—	—	—	0	0	—	—
Puerto Rico	—	0	4	31	2	4	7	21	304	281	—	0	0	—	—
U.S. Virgin Islands	—	0	0	—	—	—	1	5	26	123	—	0	0	—	—

C.N.M.I.: Commonwealth of Northern Mariana Islands.

U: Unavailable. —: No reported cases. N: Not reportable. NN: Not Nationally Notifiable. Cum: Cumulative year-to-date counts. Med: Median. Max: Maximum.

* Case counts for reporting year 2013 are provisional and subject to change. For further information on interpretation of these data, see <http://www.cdc.gov/nndss/document/ProvisionalNationalNotifiableDiseasesSurveillanceData20100927.pdf>. Data for TB are displayed in Table IV, which appears quarterly.† Data for *H. influenzae* (age <5 yrs for serotype b, nonserotype b, and unknown serotype) are available in Table I.

Morbidity and Mortality Weekly Report

TABLE II. (Continued) Provisional cases of selected notifiable diseases, United States, weeks ending November 9, 2013, and November 10, 2012 (45th week)*

Reporting area	Hepatitis (viral, acute), by type														
	A					B					C				
	Current week	Previous 52 weeks		Cum 2013	Cum 2012	Current week	Previous 52 weeks		Cum 2013	Cum 2012	Current week	Previous 52 weeks		Cum 2013	Cum 2012
	Med	Max				Med	Max				Med	Max			
United States	10	29	68	1,389	1,330	15	49	105	2,133	2,483	16	31	91	1,372	1,502
New England	1	1	5	75	74	—	1	4	52	96	—	3	7	123	78
Connecticut	—	0	2	16	21	—	0	1	3	15	—	0	1	—	34
Maine	—	0	2	7	9	—	0	1	11	8	—	0	2	5	5
Massachusetts	—	1	3	35	35	—	1	3	37	67	—	2	7	115	33
New Hampshire	—	0	1	6	6	—	0	0	—	4	N	0	0	N	N
Rhode Island	1	0	1	4	1	U	0	0	U	U	U	0	0	U	U
Vermont	—	0	2	7	2	—	0	1	1	2	—	0	1	3	6
Mid. Atlantic	3	4	12	206	205	1	3	10	134	213	4	4	11	176	198
New Jersey	—	1	5	31	50	—	0	3	—	60	—	0	3	22	67
New York (Upstate)	3	1	5	65	60	1	1	6	40	40	2	2	10	83	64
New York City	—	1	7	65	44	—	1	5	63	57	—	0	1	6	9
Pennsylvania	—	1	4	45	51	—	0	4	31	56	2	1	6	65	58
E.N. Central	1	5	14	233	198	4	8	16	367	402	2	5	19	261	211
Illinois	—	1	4	50	62	—	1	4	59	80	—	0	3	26	22
Indiana	—	0	2	25	10	—	1	5	67	79	—	2	6	96	98
Michigan	—	2	7	73	79	—	1	7	43	68	—	1	7	82	61
Ohio	1	1	5	56	27	4	4	9	190	155	2	0	17	37	7
Wisconsin	—	0	3	29	20	—	0	1	8	20	—	0	3	20	23
W.N. Central	—	1	32	52	56	—	2	17	89	77	—	0	32	22	28
Iowa	—	0	2	9	7	—	0	2	7	11	—	0	0	—	3
Kansas	—	0	3	11	14	—	0	3	9	8	—	0	3	12	14
Minnesota	—	0	29	—	—	—	0	17	—	—	—	0	32	—	—
Missouri	—	0	1	10	19	—	1	4	60	46	—	0	4	9	4
Nebraska	—	0	2	13	16	—	0	2	9	10	—	0	1	1	3
North Dakota	—	0	2	7	—	—	0	0	—	—	—	0	0	—	—
South Dakota	—	0	1	2	—	—	0	1	4	2	—	0	0	—	4
S. Atlantic	1	5	14	239	226	3	14	26	628	646	3	6	21	263	362
Delaware	—	0	2	2	3	—	0	1	7	11	U	0	0	U	U
District of Columbia	—	0	0	—	—	—	0	0	—	—	—	0	0	—	—
Florida	—	2	8	99	71	—	6	11	255	210	—	2	7	115	95
Georgia	—	1	4	46	41	1	2	6	94	97	—	0	3	25	76
Maryland	1	0	4	31	25	1	1	4	36	49	1	1	3	39	36
North Carolina	—	1	4	41	29	—	0	7	50	65	1	0	15	46	52
South Carolina	—	0	1	10	5	1	1	5	46	33	—	0	0	—	1
Virginia	—	0	2	7	45	—	0	4	9	72	1	0	5	3	57
West Virginia	—	0	1	3	7	—	3	11	131	109	—	0	5	35	45
E.S. Central	1	1	4	54	68	1	12	21	474	507	2	6	14	280	295
Alabama	—	0	2	9	16	—	1	5	69	68	—	0	5	25	21
Kentucky	—	0	2	22	22	—	4	7	150	158	—	3	10	169	159
Mississippi	—	0	2	4	8	—	1	4	44	69	U	0	0	U	U
Tennessee	1	0	2	19	22	1	5	9	211	212	2	2	7	86	115
W.S. Central	—	2	6	94	141	6	5	40	229	283	2	2	16	84	110
Arkansas	—	0	2	5	8	—	1	4	38	66	—	0	3	16	3
Louisiana	—	0	2	9	4	—	1	8	46	39	—	0	2	15	11
Oklahoma	—	0	4	9	9	2	0	16	33	55	1	0	9	33	63
Texas	—	2	5	71	120	4	3	20	112	123	1	0	5	20	33
Mountain	2	2	16	156	146	—	1	4	50	82	—	1	5	48	101
Arizona	—	1	6	58	80	—	0	3	9	13	U	0	0	U	U
Colorado	—	0	8	42	25	—	0	1	6	21	—	0	1	7	40
Idaho	1	0	2	6	11	—	0	1	7	5	—	0	2	7	10
Montana	—	0	1	6	6	—	0	1	1	2	—	0	2	14	6
Nevada	1	0	3	18	10	—	0	3	24	26	—	0	2	8	11
New Mexico	—	0	2	16	9	—	0	1	1	3	—	0	1	2	21
Utah	—	0	2	10	4	—	0	1	2	12	—	0	2	10	13
Wyoming	—	0	0	—	1	—	0	0	—	—	—	0	0	—	—
Pacific	1	5	17	280	216	—	2	6	110	177	3	3	15	115	119
Alaska	—	0	1	1	1	—	0	1	1	—	—	0	0	—	—
California	—	4	16	200	180	—	1	5	62	121	—	1	6	58	49
Hawaii	—	0	4	15	5	—	0	1	3	5	—	0	0	—	—
Oregon	—	0	3	26	4	—	0	4	26	21	1	0	1	12	35
Washington	1	0	4	38	26	—	0	3	18	30	2	1	15	45	35
Territories															
American Samoa	—	—	—	—	—	—	—	—	—	—	—	—	—	—	—
C.N.M.I.	—	—	—	—	—	—	—	—	—	—	—	—	—	—	—
Guam	—	0	0	—	—	—	0	0	—	—	—	0	0	—	—
Puerto Rico	—	0	1	8	—	—	0	6	32	4	N	0	0	N	N
U.S. Virgin Islands	—	0	0	—	—	—	0	0	—	—	—	0	0	—	—

C.N.M.I.: Commonwealth of Northern Mariana Islands.

U: Unavailable. —: No reported cases. N: Not reportable. NN: Not Nationally Notifiable. Cum: Cumulative year-to-date counts. Med: Median. Max: Maximum.

* Case counts for reporting year 2013 are provisional and subject to change. For further information on interpretation of these data, see <http://www.cdc.gov/nndss/document/ProvisionalNationaNotifiableDiseasesSurveillanceData20100927.pdf>. Data for TB are displayed in Table IV, which appears quarterly.

Morbidity and Mortality Weekly Report

TABLE II. (Continued) Provisional cases of selected notifiable diseases, United States, weeks ending November 9, 2013, and November 10, 2012 (45th week)*

Reporting area	Legionellosis					Lyme disease					Malaria				
	Current week	Previous 52 weeks		Cum 2013	Cum 2012	Current week	Previous 52 weeks		Cum 2013	Cum 2012	Current week	Previous 52 weeks		Cum 2013	Cum 2012
		Med	Max				Med	Max				Med	Max		
United States	27	64	257	4,107	3,181	113	331	2,009	26,846	28,161	18	23	87	1,100	1,294
New England	—	5	25	298	262	4	99	788	8,733	10,377	8	2	11	86	82
Connecticut	—	1	10	54	48	—	26	231	2,290	2,460	—	0	1	—	18
Maine	—	0	2	14	15	1	13	99	1,168	1,019	—	0	2	8	4
Massachusetts	—	3	20	168	151	—	36	395	3,579	4,889	—	1	4	58	44
New Hampshire	—	0	3	18	17	—	7	48	487	1,376	—	0	1	7	8
Rhode Island	—	0	7	31	21	—	3	49	449	170	8	0	10	8	4
Vermont	—	0	2	13	10	3	9	91	760	463	—	0	3	5	4
Mid. Atlantic	6	16	121	1,245	855	84	168	992	13,705	10,459	3	7	21	341	342
New Jersey	—	3	18	171	154	1	48	218	3,087	3,312	—	1	4	64	61
New York (Upstate)	5	6	40	407	264	60	43	268	3,684	1,975	2	1	7	52	34
New York City	—	3	47	280	165	—	2	37	247	504	—	3	13	166	200
Pennsylvania	1	5	26	387	272	23	68	528	6,687	4,668	1	1	5	59	47
E.N. Central	10	15	102	1,208	752	—	12	198	1,990	2,167	1	2	8	116	130
Illinois	—	2	30	237	211	—	1	30	299	201	—	1	5	53	39
Indiana	2	3	10	157	44	—	1	12	93	73	—	0	2	17	21
Michigan	—	3	21	221	154	—	1	15	173	93	—	0	1	14	22
Ohio	8	6	66	469	250	—	1	6	91	60	1	0	2	25	38
Wisconsin	—	1	11	124	93	—	7	160	1,334	1,740	—	0	3	7	10
W.N. Central	—	2	13	122	153	2	6	29	289	1,669	—	1	3	32	95
Iowa	—	0	2	9	13	—	1	24	192	161	—	0	2	7	6
Kansas	—	0	3	13	12	—	0	4	30	18	—	0	1	6	6
Minnesota	—	0	2	21	47	—	0	11	—	1,470	—	0	1	—	55
Missouri	—	1	11	56	62	—	0	3	13	2	—	0	2	4	17
Nebraska	—	0	3	15	10	2	0	3	24	14	—	0	2	6	4
North Dakota	—	0	1	2	3	—	0	14	26	—	—	0	1	2	2
South Dakota	—	0	2	6	6	—	0	1	4	4	—	0	3	7	5
S. Atlantic	6	11	36	542	535	21	39	234	1,795	3,204	3	5	14	262	319
Delaware	—	0	4	14	17	3	8	22	359	597	—	0	1	5	2
District of Columbia	N	0	0	N	N	N	0	0	N	N	—	0	1	4	6
Florida	—	4	12	203	176	—	2	14	132	95	—	1	3	46	54
Georgia	—	1	5	55	51	—	0	4	10	28	—	1	5	45	60
Maryland	3	3	14	139	108	2	18	85	938	1,436	3	2	9	126	102
North Carolina	3	1	9	76	60	—	0	33	144	89	—	0	8	20	26
South Carolina	—	0	3	16	24	—	0	2	18	39	—	0	2	8	9
Virginia	—	0	7	16	66	16	0	183	98	834	—	0	3	7	58
West Virginia	—	0	4	23	33	—	2	18	96	86	—	0	1	1	2
E.S. Central	1	3	13	153	116	—	1	9	74	65	1	1	4	29	32
Alabama	—	0	10	37	19	—	0	2	19	25	—	0	1	2	9
Kentucky	—	1	4	37	31	—	0	9	36	12	—	0	2	9	8
Mississippi	—	0	2	15	16	—	0	0	—	1	—	0	1	2	4
Tennessee	1	1	7	64	50	—	0	4	19	27	1	0	3	16	11
W.S. Central	1	3	39	155	174	—	1	27	48	48	1	1	41	64	95
Arkansas	—	0	3	18	15	—	0	0	—	—	—	0	1	1	4
Louisiana	—	0	3	25	26	—	0	1	—	6	—	0	1	8	12
Oklahoma	—	0	8	12	14	—	0	4	1	—	1	0	3	12	22
Texas	1	2	27	100	119	—	1	23	47	42	—	1	39	43	57
Mountain	—	3	10	131	108	1	1	9	74	42	—	2	6	61	57
Arizona	—	1	4	47	35	—	0	3	21	13	—	0	3	30	14
Colorado	—	0	3	20	20	—	0	0	—	—	—	0	2	16	20
Idaho	—	0	2	9	3	—	0	3	14	3	—	0	1	4	8
Montana	—	0	2	10	4	1	0	2	13	6	—	0	0	—	—
Nevada	—	0	3	16	15	—	0	1	11	10	—	0	1	7	4
New Mexico	—	0	2	9	9	—	0	0	—	1	—	0	0	—	2
Utah	—	0	5	20	19	—	0	2	12	5	—	0	2	4	9
Wyoming	—	0	1	—	3	—	0	1	3	4	—	0	0	—	—
Pacific	3	5	24	253	226	1	2	8	138	130	1	2	8	109	142
Alaska	—	0	1	1	1	—	0	4	25	9	—	0	1	2	7
California	2	4	22	208	187	—	1	4	44	64	1	1	7	70	102
Hawaii	—	0	1	5	3	N	0	0	N	N	—	0	1	1	4
Oregon	—	0	3	15	19	1	1	5	56	43	—	0	1	11	11
Washington	1	0	7	24	16	—	0	2	13	14	—	0	3	25	18
Territories															
American Samoa	N	—	—	N	N	N	—	—	N	N	—	—	—	—	—
C.N.M.I.	—	—	—	—	—	—	—	—	—	—	—	—	—	—	—
Guam	—	0	0	—	—	—	0	0	—	—	—	0	0	—	—
Puerto Rico	—	0	2	14	—	N	0	0	N	N	—	0	0	—	—
U.S. Virgin Islands	—	0	0	—	—	N	0	0	N	N	—	0	0	—	—

C.N.M.I.: Commonwealth of Northern Mariana Islands.

U: Unavailable. —: No reported cases. N: Not reportable. NN: Not Nationally Notifiable. Cum: Cumulative year-to-date counts. Med: Median. Max: Maximum.

* Case counts for reporting year 2013 are provisional and subject to change. For further information on interpretation of these data, see <http://www.cdc.gov/nndss/document/ProvisionalNationalNotifiableDiseasesSurveillanceData20100927.pdf>. Data for TB are displayed in Table IV, which appears quarterly.

Morbidity and Mortality Weekly Report

TABLE II. (Continued) Provisional cases of selected notifiable diseases, United States, weeks ending November 9, 2013, and November 10, 2012 (45th week)*

Reporting area	Meningococcal disease, invasive† All serogroups					Mumps					Pertussis				
	Current week	Previous 52 weeks		Cum 2013	Cum 2012	Current week	Previous 52 weeks		Cum 2013	Cum 2012	Current week	Previous 52 weeks		Cum 2013	Cum 2012
		Med	Max				Med	Max				Med	Max		
United States	9	10	32	442	452	1	6	43	394	192	235	473	1,211	19,978	42,360
New England	—	0	3	23	12	—	0	24	68	5	7	24	92	936	2,073
Connecticut	—	0	1	2	2	—	0	2	4	—	1	1	5	36	162
Maine	—	0	1	3	3	—	0	1	1	—	—	7	23	275	620
Massachusetts	—	0	3	12	6	—	0	24	59	4	—	6	23	302	552
New Hampshire	—	0	1	2	—	—	0	0	—	—	—	2	9	98	244
Rhode Island	—	0	1	1	—	—	0	1	3	1	6	1	16	115	94
Vermont	—	0	1	3	1	—	0	1	1	—	—	2	42	110	401
Mid. Atlantic	2	1	7	67	68	—	1	20	114	26	24	34	169	1,445	5,800
New Jersey	—	0	2	13	13	—	0	19	61	—	—	7	27	254	1,266
New York (Upstate)	1	0	3	20	17	—	0	2	9	5	10	14	120	600	2,372
New York City	—	0	2	10	20	—	0	4	27	17	—	2	7	91	430
Pennsylvania	1	0	3	24	18	—	0	5	17	4	14	12	41	500	1,732
E.N. Central	—	1	4	39	62	—	1	6	46	52	67	81	191	3,375	10,014
Illinois	—	0	2	11	15	—	0	4	24	27	—	13	37	564	1,852
Indiana	—	0	1	12	6	—	0	1	3	4	—	8	22	349	348
Michigan	—	0	1	3	12	—	0	1	6	8	5	13	33	661	738
Ohio	—	0	2	9	21	—	0	2	12	5	61	18	41	963	752
Wisconsin	—	0	1	4	8	—	0	1	1	8	1	20	109	838	6,324
W.N. Central	—	0	3	30	34	—	0	2	14	19	15	35	154	1,492	7,399
Iowa	—	0	1	1	2	—	0	2	2	3	—	5	31	225	1,619
Kansas	—	0	1	3	6	—	0	1	—	3	—	6	29	215	784
Minnesota	—	0	2	8	8	—	0	1	1	7	—	9	67	369	3,839
Missouri	—	0	1	8	14	—	0	2	9	5	9	9	29	397	719
Nebraska	—	0	1	3	3	—	0	0	—	1	6	4	10	181	201
North Dakota	—	0	1	3	1	—	0	1	2	—	—	1	29	68	173
South Dakota	—	0	1	4	—	—	0	0	—	—	—	1	4	37	64
S. Atlantic	—	1	6	84	73	—	0	26	95	19	17	41	89	1,755	2,496
Delaware	—	0	1	1	1	—	0	0	—	—	—	0	4	25	44
District of Columbia	—	0	1	4	2	—	0	1	1	2	—	0	4	34	20
Florida	—	1	3	49	39	—	0	1	1	4	—	11	65	604	524
Georgia	—	0	2	12	10	—	0	1	—	3	—	4	11	186	291
Maryland	—	0	1	3	4	—	0	26	87	—	2	4	19	166	310
North Carolina	—	0	2	10	5	—	0	1	4	1	12	11	28	496	501
South Carolina	—	0	1	2	5	—	0	1	2	1	2	4	11	195	202
Virginia	—	0	2	1	3	—	0	1	—	6	1	0	39	38	525
West Virginia	—	0	1	2	4	—	0	0	—	2	—	0	2	11	79
E.S. Central	—	0	2	10	11	—	0	3	10	6	1	16	40	653	1,079
Alabama	—	0	1	2	3	—	0	1	2	2	—	3	8	153	191
Kentucky	—	0	1	1	1	—	0	1	1	2	—	6	27	261	562
Mississippi	—	0	1	3	2	—	0	0	—	—	—	1	4	44	68
Tennessee	—	0	1	4	5	—	0	3	7	2	1	5	12	195	258
W.S. Central	—	1	5	35	48	—	0	3	12	16	68	77	342	3,508	1,913
Arkansas	—	0	1	7	7	—	0	1	2	1	4	8	27	318	109
Louisiana	—	0	1	2	3	—	0	1	1	2	1	2	11	142	62
Oklahoma	—	0	2	6	6	—	0	3	1	1	6	0	36	140	116
Texas	—	0	4	20	32	—	0	2	8	12	57	61	288	2,908	1,626
Mountain	—	0	4	33	33	—	0	2	10	15	22	104	175	4,279	5,274
Arizona	—	0	3	11	2	—	0	1	1	3	4	24	70	1,118	965
Colorado	—	0	1	5	6	—	0	1	2	7	18	24	49	848	1,285
Idaho	—	0	1	4	4	—	0	0	—	—	—	4	10	179	210
Montana	—	0	1	1	10	—	0	0	—	1	—	11	29	553	498
Nevada	—	0	1	1	2	—	0	2	5	—	—	2	12	158	95
New Mexico	—	0	2	2	3	—	0	0	—	—	—	11	33	428	776
Utah	—	0	2	7	4	—	0	1	2	3	—	22	49	932	1,385
Wyoming	—	0	1	2	2	—	0	0	—	1	—	0	12	63	60
Pacific	7	2	16	121	111	1	0	3	25	34	14	58	298	2,535	6,312
Alaska	—	0	1	—	1	—	0	1	1	—	7	7	31	304	215
California	2	2	7	97	77	—	0	3	18	27	1	22	51	1,144	686
Hawaii	—	0	1	1	2	—	0	1	1	1	—	1	4	38	68
Oregon	—	0	2	10	21	—	0	1	3	5	—	9	26	444	861
Washington	5	0	12	13	10	1	0	1	2	1	6	14	256	605	4,482
Territories															
American Samoa	—	—	—	—	—	—	—	—	—	—	—	—	—	—	—
C.N.M.I.	—	—	—	—	—	—	—	—	—	—	—	—	—	—	—
Guam	—	0	0	—	—	—	0	0	—	4	—	0	0	—	1
Puerto Rico	—	0	0	—	—	—	0	1	3	4	—	0	6	21	—
U.S. Virgin Islands	—	0	0	—	—	—	0	0	—	—	—	0	0	—	—

C.N.M.I.: Commonwealth of Northern Mariana Islands.

U: Unavailable. —: No reported cases. N: Not reportable. NN: Not Nationally Notifiable. Cum: Cumulative year-to-date counts. Med: Median. Max: Maximum.

* Case counts for reporting year 2013 are provisional and subject to change. For further information on interpretation of these data, see <http://www.cdc.gov/ndss/document/ProvisionalNationalNotifiableDiseasesSurveillanceData20100927.pdf>. Data for TB are displayed in Table IV, which appears quarterly.

† Data for meningococcal disease, invasive caused by serogroups A, C, Y, and W-135; serogroup B; other serogroup; and unknown serogroup are available in Table I.

Morbidity and Mortality Weekly Report

TABLE II. (Continued) Provisional cases of selected notifiable diseases, United States, weeks ending November 9, 2013, and November 10, 2012 (45th week)*

Reporting area	Rabies, animal					Salmonellosis					Shiga toxin-producing <i>E. coli</i> (STEC) [†]				
	Current week	Previous 52 weeks		Cum 2013	Cum 2012	Current week	Previous 52 weeks		Cum 2013	Cum 2012	Current week	Previous 52 weeks		Cum 2013	Cum 2012
		Med	Max				Med	Max				Med	Max		
United States	20	64	140	2,807	3,715	476	900	1,487	39,315	47,538	36	107	219	4,668	5,580
New England	2	6	12	265	345	6	36	79	1,879	1,805	—	4	12	219	178
Connecticut	—	3	12	130	156	1	7	21	383	409	—	1	7	55	42
Maine	—	1	4	41	81	1	2	11	115	140	—	0	4	29	17
Massachusetts	—	0	0	—	—	3	22	56	1,056	936	—	2	8	98	81
New Hampshire	—	0	3	25	26	—	3	11	156	142	—	0	2	17	20
Rhode Island	—	0	4	25	28	1	2	13	111	96	—	0	2	2	2
Vermont	2	1	5	44	54	—	1	5	58	82	—	0	3	18	16
Mid. Atlantic	7	7	19	301	767	48	87	192	4,387	4,843	7	12	35	596	592
New Jersey	—	0	0	—	—	—	15	43	838	1,069	—	2	7	93	122
New York (Upstate)	7	6	19	301	389	27	25	74	1,115	1,202	5	4	14	197	202
New York City	—	0	1	—	9	4	20	52	1,014	1,065	—	1	8	90	82
Pennsylvania	—	0	10	—	369	17	29	66	1,420	1,507	2	4	19	216	186
E.N. Central	—	2	24	153	102	28	89	142	3,990	5,327	4	17	45	808	1,061
Illinois	—	0	6	51	—	—	32	67	1,437	1,760	—	4	32	237	195
Indiana	—	0	1	9	8	—	11	23	502	728	—	1	6	82	168
Michigan	—	0	5	35	54	3	17	42	810	898	1	3	14	154	259
Ohio	—	0	19	58	40	25	24	43	1,090	1,143	3	4	15	201	210
Wisconsin	N	0	0	N	N	—	4	22	151	798	—	3	12	134	229
W.N. Central	2	2	48	117	196	14	46	92	2,144	3,259	2	13	36	631	951
Iowa	—	0	1	—	32	—	10	36	538	570	—	2	14	151	174
Kansas	—	1	5	53	53	—	7	18	376	441	—	1	6	81	86
Minnesota	—	0	0	—	—	—	0	11	—	721	—	0	6	—	234
Missouri	2	0	3	38	28	12	17	29	724	993	2	4	18	253	289
Nebraska	—	0	0	—	—	2	5	20	262	322	—	1	7	71	95
North Dakota	—	0	46	—	29	—	2	7	92	58	—	0	3	36	29
South Dakota	—	0	4	26	54	—	3	9	152	154	—	1	5	39	44
S. Atlantic	3	18	44	821	936	169	217	429	10,687	13,644	3	10	72	426	442
Delaware	—	0	0	—	—	—	1	7	82	138	—	0	2	10	12
District of Columbia	—	0	0	—	—	—	1	4	38	63	—	0	1	4	8
Florida	—	0	27	84	103	—	104	226	4,958	5,678	—	2	9	130	75
Georgia	—	0	0	—	—	47	34	100	2,061	2,456	2	2	9	117	120
Maryland	—	7	17	336	288	21	15	36	745	888	1	1	5	55	70
North Carolina	—	0	0	—	—	71	29	136	1,541	1,860	—	1	61	63	50
South Carolina	—	0	0	—	—	18	19	52	960	1,364	—	0	2	8	21
Virginia	—	10	15	344	486	12	1	30	144	1,004	—	0	3	17	70
West Virginia	3	1	6	57	59	—	3	9	158	193	—	0	2	22	16
E.S. Central	—	1	6	50	65	21	58	127	2,865	3,917	3	6	18	270	275
Alabama	—	0	5	32	49	5	17	67	850	1,057	1	1	5	40	60
Kentucky	—	0	3	12	14	—	9	21	437	681	—	2	9	94	80
Mississippi	—	0	2	6	2	7	14	41	828	1,175	—	0	4	25	20
Tennessee	—	0	0	—	—	9	15	36	750	1,004	2	2	6	111	115
W.S. Central	6	18	74	890	730	111	130	432	5,376	7,224	5	10	126	465	509
Arkansas	—	0	34	131	113	13	14	229	601	1,150	—	1	10	66	48
Louisiana	—	0	0	—	4	6	22	42	940	1,404	—	0	2	19	25
Oklahoma	6	0	31	77	48	21	13	32	656	660	1	2	11	94	83
Texas	—	16	40	682	565	71	72	329	3,179	4,010	4	6	105	286	353
Mountain	—	0	8	45	308	10	49	247	2,380	2,183	—	8	28	426	657
Arizona	N	0	0	N	N	1	18	32	799	736	—	1	5	43	127
Colorado	—	0	5	—	178	4	6	27	387	466	—	2	11	93	157
Idaho	—	0	4	16	23	1	2	9	108	121	—	1	6	85	128
Montana	N	0	0	N	N	1	2	9	78	96	—	1	5	41	40
Nevada	—	0	2	11	18	1	4	205	390	161	—	1	3	41	36
New Mexico	—	0	1	6	47	1	5	14	291	301	—	0	3	24	48
Utah	—	0	4	12	15	—	5	13	278	237	—	1	10	86	96
Wyoming	—	0	0	—	27	1	1	6	49	65	—	0	7	13	25
Pacific	—	3	11	165	266	69	120	204	5,607	5,336	12	16	47	827	915
Alaska	—	0	2	6	6	—	1	5	81	50	N	0	0	N	N
California	—	2	11	152	244	49	90	165	4,331	3,900	2	8	16	356	525
Hawaii	—	0	0	—	—	1	5	13	284	324	—	0	5	21	15
Oregon	—	0	2	7	16	1	6	25	343	355	—	3	14	173	181
Washington	—	0	9	—	—	18	12	40	568	707	10	4	33	277	194
Territories															
American Samoa	—	—	—	—	—	—	—	—	—	4	—	—	—	—	—
C.N.M.I.	—	—	—	—	—	—	—	—	—	—	—	—	—	—	—
Guam	—	0	0	—	—	—	0	1	—	12	—	0	0	—	—
Puerto Rico	—	0	0	—	27	—	7	43	410	32	—	0	1	3	2
U.S. Virgin Islands	—	0	0	—	—	—	0	0	—	—	—	0	0	—	—

C.N.M.I.: Commonwealth of Northern Mariana Islands.

U: Unavailable. —: No reported cases. N: Not reportable. NN: Not Nationally Notifiable. Cum: Cumulative year-to-date counts. Med: Median. Max: Maximum.

* Case counts for reporting year 2013 are provisional and subject to change. For further information on interpretation of these data, see <http://www.cdc.gov/nndss/document/ProvisionalNationalNotifiableDiseasesSurveillanceData20100927.pdf>. Data for TB are displayed in Table IV, which appears quarterly.

† Includes *E. coli* O157:H7; Shiga toxin-positive, serogroup non-O157; and Shiga toxin-positive, not serogrouped.

Morbidity and Mortality Weekly Report

TABLE II. (Continued) Provisional cases of selected notifiable diseases, United States, weeks ending November 9, 2013, and November 10, 2012 (45th week)*

Reporting area	Spotted Fever Rickettsiosis (including RMSF) [†]														
	Shigellosis					Confirmed					Probable				
	Current week	Previous 52 weeks		Cum 2013	Cum 2012	Current week	Previous 52 weeks		Cum 2013	Cum 2012	Current week	Previous 52 weeks		Cum 2013	Cum 2012
	Med	Max				Med	Max				Med	Max			
United States	132	190	378	8,620	13,223	1	2	10	164	174	17	37	420	2,347	3,697
New England	1	4	94	467	172	—	0	1	1	1	—	0	3	7	19
Connecticut	—	1	5	48	37	—	0	0	—	—	—	0	0	—	—
Maine	—	0	1	5	6	—	0	0	—	—	—	0	1	2	3
Massachusetts	1	2	12	155	107	—	0	0	—	—	—	0	1	2	6
New Hampshire	—	0	1	6	7	—	0	1	1	—	—	0	1	1	2
Rhode Island	—	0	86	250	11	—	0	0	—	—	—	0	3	2	8
Vermont	—	0	1	3	4	—	0	0	—	1	—	0	0	—	—
Mid. Atlantic	8	18	75	746	2,219	—	0	1	5	5	3	1	11	84	175
New Jersey	—	3	10	119	924	—	0	1	1	—	—	1	4	32	121
New York (Upstate)	4	5	61	225	654	—	0	1	2	4	2	0	7	16	12
New York City	4	6	14	279	522	—	0	0	—	—	—	0	1	9	7
Pennsylvania	—	3	9	123	119	—	0	1	2	1	1	0	3	27	35
E.N. Central	6	25	114	1,069	2,047	—	0	2	17	10	—	2	14	173	213
Illinois	—	5	11	211	250	—	0	1	5	8	—	1	8	89	141
Indiana	—	1	6	59	153	—	0	1	8	2	—	1	4	49	27
Michigan	—	3	8	136	231	—	0	1	2	—	—	0	1	4	2
Ohio	6	13	103	630	1,324	—	0	1	1	—	—	0	2	22	21
Wisconsin	—	1	13	33	89	—	0	1	1	—	—	0	2	9	22
W.N. Central	4	6	37	308	858	—	0	1	8	5	—	2	26	245	337
Iowa	1	2	14	111	80	—	0	0	—	—	—	0	1	6	7
Kansas	—	1	4	41	118	—	0	0	—	—	—	0	0	—	—
Minnesota	—	0	11	—	337	—	0	0	—	—	—	0	0	—	15
Missouri	2	1	8	68	69	—	0	1	2	4	—	1	25	223	305
Nebraska	1	1	21	53	237	—	0	1	5	1	—	0	2	9	8
North Dakota	—	0	2	15	6	—	0	0	—	—	—	0	1	2	1
South Dakota	—	0	5	20	11	—	0	1	1	—	—	0	1	5	1
S. Atlantic	40	38	106	1,871	2,691	1	1	5	78	114	8	7	55	492	1,033
Delaware	—	0	1	3	20	—	0	0	—	—	—	0	2	9	27
District of Columbia	—	0	2	11	24	—	0	1	1	1	—	0	0	—	1
Florida	—	16	61	807	1,602	—	0	2	4	3	—	0	4	21	25
Georgia	17	14	36	688	600	—	1	5	56	89	—	0	0	—	—
Maryland	4	2	6	90	213	1	0	1	2	—	1	0	4	25	9
North Carolina	16	2	10	144	115	—	0	2	11	10	6	1	47	361	478
South Carolina	1	2	6	103	28	—	0	1	2	7	—	1	2	29	51
Virginia	2	0	5	21	82	—	0	1	1	4	1	0	9	42	440
West Virginia	—	0	1	4	7	—	0	1	1	—	—	0	2	5	2
E.S. Central	33	17	61	874	1,079	—	0	3	17	13	5	9	48	766	912
Alabama	4	5	13	222	284	—	0	1	2	3	5	2	15	204	155
Kentucky	—	1	18	56	367	—	0	1	2	3	—	1	6	61	58
Mississippi	—	4	12	174	254	—	0	1	2	2	—	0	4	25	23
Tennessee	29	5	46	422	174	—	0	2	11	5	—	7	30	476	676
W.S. Central	25	41	159	1,726	2,327	—	0	5	14	8	1	5	366	553	935
Arkansas	3	3	11	189	73	—	0	2	4	5	1	4	27	327	810
Louisiana	—	6	18	251	175	—	0	0	—	—	—	0	1	3	9
Oklahoma	—	3	60	152	433	—	0	5	9	1	—	0	351	176	52
Texas	22	25	95	1,134	1,646	—	0	1	1	2	—	1	8	47	64
Mountain	11	11	37	578	686	—	0	5	22	11	—	0	3	21	60
Arizona	4	7	27	344	372	—	0	5	21	10	—	0	2	14	38
Colorado	5	1	3	43	110	—	0	0	—	1	—	0	1	—	4
Idaho	—	0	2	7	9	—	0	1	1	—	—	0	0	—	4
Montana	1	0	10	63	9	—	0	0	—	—	—	0	1	2	3
Nevada	—	0	7	47	52	—	0	0	—	—	—	0	1	1	—
New Mexico	1	1	5	48	98	—	0	0	—	—	—	0	1	2	4
Utah	—	0	2	22	31	—	0	0	—	—	—	0	1	2	5
Wyoming	—	0	2	4	5	—	0	0	—	—	—	0	0	—	2
Pacific	4	22	44	981	1,144	—	0	1	2	7	—	0	1	6	13
Alaska	—	0	1	1	7	N	0	0	N	N	N	0	0	N	N
California	3	18	44	802	930	—	0	1	1	7	—	0	1	6	12
Hawaii	—	0	6	31	25	N	0	0	N	N	N	0	0	N	N
Oregon	—	1	4	47	82	—	0	1	1	—	—	0	0	—	1
Washington	1	1	19	100	100	—	0	1	—	—	—	0	0	—	—
Territories															
American Samoa	—	—	—	—	5	N	—	—	N	N	N	—	—	N	N
C.N.M.I.	—	—	—	—	—	—	—	—	—	—	—	—	—	—	—
Guam	—	0	0	—	1	N	0	0	N	N	N	0	0	N	N
Puerto Rico	—	0	1	4	—	N	0	0	N	N	N	0	0	N	N
U.S. Virgin Islands	—	0	0	—	—	N	0	0	N	N	N	0	0	N	N

C.N.M.I.: Commonwealth of Northern Mariana Islands.

U: Unavailable. —: No reported cases. N: Not reportable. NN: Not Nationally Notifiable. Cum: Cumulative year-to-date counts. Med: Median. Max: Maximum.

* Case counts for reporting year 2013 are provisional and subject to change. For further information on interpretation of these data, see <http://www.cdc.gov/nndss/document/ProvisionalNationalNotifiableDiseasesSurveillanceData20100927.pdf>. Data for TB are displayed in Table IV, which appears quarterly.

† Illnesses with similar clinical presentation that result from Spotted fever group rickettsia infections are reported as Spotted fever rickettsioses. Rocky Mountain spotted fever (RMSF) caused by *Rickettsia rickettsii*, is the most common and well-known spotted fever.

Morbidity and Mortality Weekly Report

TABLE II. (Continued) Provisional cases of selected notifiable diseases, United States, weeks ending November 9, 2013, and November 10, 2012 (45th week)*

Reporting area	<i>Streptococcus pneumoniae</i> , [†] invasive disease										Syphilis, primary and secondary				
	All ages					Age <5									
	Current week	Previous 52 weeks		Cum 2013	Cum 2012	Current week	Previous 52 weeks		Cum 2013	Cum 2012	Current week	Previous 52 weeks		Cum 2013	Cum 2012
	Med	Max				Med	Max				Med	Max			
United States	122	310	966	12,549	12,385	8	21	55	855	1,021	94	310	424	13,505	13,473
New England	5	14	68	538	961	—	1	4	35	58	—	8	19	396	415
Connecticut	2	5	21	255	254	—	0	2	11	14	—	1	6	43	47
Maine	1	2	8	95	81	—	0	1	5	2	—	0	1	6	16
Massachusetts	—	0	18	20	467	—	0	4	17	35	—	6	18	292	281
New Hampshire	—	1	5	68	67	—	0	1	2	6	—	0	4	21	25
Rhode Island	—	0	29	52	42	—	0	0	—	1	—	0	3	29	41
Vermont	2	1	6	48	50	—	0	0	—	—	—	0	2	5	5
Mid. Atlantic	17	43	198	1,820	1,759	1	2	13	94	97	14	40	59	1,688	1,626
New Jersey	—	11	30	424	474	—	1	3	28	31	—	4	9	165	194
New York (Upstate)	13	19	147	824	756	1	1	9	40	48	4	4	32	213	176
New York City	4	12	36	572	529	—	0	3	26	18	3	21	33	937	834
Pennsylvania	N	—	—	N	N	N	0	0	N	N	7	8	16	373	422
E.N. Central	24	60	132	2,456	2,377	2	3	9	145	191	2	36	55	1,515	1,600
Illinois	N	0	0	N	N	—	1	3	35	40	—	13	27	540	694
Indiana	—	13	50	523	576	—	0	3	24	28	2	4	10	199	196
Michigan	5	13	30	595	448	1	1	3	34	26	—	8	17	365	262
Ohio	17	20	63	994	958	1	1	4	34	75	—	8	14	349	368
Wisconsin	2	8	26	344	395	—	0	3	18	22	—	1	5	62	80
W.N. Central	8	11	35	489	682	1	1	4	67	86	—	10	21	492	334
Iowa	N	0	0	N	N	N	0	0	N	N	—	1	5	66	58
Kansas	N	0	0	N	N	N	0	0	N	N	—	1	4	39	22
Minnesota	—	5	24	276	404	—	0	3	23	29	—	3	7	124	97
Missouri	N	0	0	N	N	—	0	3	24	35	—	4	11	214	134
Nebraska	7	3	7	128	114	1	0	1	11	12	—	0	3	22	5
North Dakota	—	0	7	—	88	—	0	0	—	—	—	0	2	4	4
South Dakota	1	2	6	85	76	—	0	2	9	10	—	0	2	23	14
S. Atlantic	27	67	145	2,893	2,587	2	5	14	205	222	56	72	184	3,225	3,186
Delaware	—	0	3	21	28	—	0	0	—	2	4	0	9	35	37
District of Columbia	4	1	7	74	52	1	0	1	1	3	2	3	8	155	147
Florida	—	22	59	921	802	—	2	5	75	61	—	26	43	1,147	1,195
Georgia	12	21	56	892	741	1	2	5	71	66	24	14	110	682	720
Maryland	7	7	26	380	382	—	0	4	23	30	—	8	16	350	363
North Carolina	N	0	0	N	N	N	0	0	N	N	17	4	34	347	309
South Carolina	4	8	21	371	310	—	0	3	19	19	—	5	13	235	194
Virginia	N	0	0	N	N	—	0	4	2	26	9	5	24	266	214
West Virginia	—	4	25	234	272	—	0	2	14	15	—	0	1	8	7
E.S. Central	9	29	60	1,148	1,028	—	2	5	79	80	—	10	21	445	693
Alabama	1	3	10	142	91	—	0	3	17	12	—	3	6	125	194
Kentucky	1	4	12	211	168	—	0	1	11	8	—	2	9	94	119
Mississippi	1	4	12	186	143	—	0	2	17	24	—	1	8	67	140
Tennessee	6	14	41	609	626	—	0	5	34	36	—	4	8	159	240
W.S. Central	13	35	368	1,527	1,338	1	3	24	127	144	7	42	63	1,842	1,965
Arkansas	—	3	24	149	129	—	0	1	7	12	6	4	13	151	156
Louisiana	1	5	14	234	197	—	0	4	15	20	1	7	19	297	306
Oklahoma	N	0	0	N	N	—	0	1	17	23	—	2	8	98	72
Texas	12	27	340	1,144	1,012	1	2	23	88	89	—	30	42	1,296	1,431
Mountain	19	31	76	1,528	1,481	1	2	6	88	123	4	13	26	601	600
Arizona	8	12	41	667	583	—	0	4	31	45	—	4	12	197	184
Colorado	6	9	22	349	381	1	0	3	19	30	1	3	12	134	171
Idaho	N	0	0	N	N	—	0	1	4	1	—	0	2	9	21
Montana	—	0	2	24	27	—	0	1	2	2	—	0	1	5	—
Nevada	3	2	7	110	88	—	0	1	4	9	3	3	14	155	92
New Mexico	2	5	17	249	224	—	0	2	11	15	—	1	4	60	96
Utah	—	2	11	111	150	—	0	2	16	19	—	1	4	40	33
Wyoming	—	0	3	18	28	—	0	1	1	2	—	0	1	1	3
Pacific	—	4	10	150	172	—	0	2	15	20	11	76	109	3,301	3,054
Alaska	—	2	6	94	117	—	0	1	13	16	—	0	2	18	10
California	N	0	0	N	N	N	0	0	N	N	8	64	94	2,794	2,565
Hawaii	—	1	5	56	55	—	0	2	2	4	—	1	3	33	19
Oregon	N	0	0	N	N	N	0	0	N	N	—	5	11	226	191
Washington	N	0	0	N	N	N	0	0	N	N	3	5	14	230	269
Territories															
American Samoa	N	—	—	N	N	—	—	—	—	—	—	—	—	—	—
C.N.M.I.	—	—	—	—	—	—	—	—	—	—	—	—	—	—	—
Guam	—	0	0	—	—	—	0	0	—	—	—	0	0	—	—
Puerto Rico	—	0	0	—	—	—	0	0	—	—	4	7	30	338	256
U.S. Virgin Islands	—	0	0	—	—	—	0	0	—	—	—	0	1	1	—

C.N.M.I.: Commonwealth of Northern Mariana Islands.

U: Unavailable. —: No reported cases. N: Not reportable. NN: Not Nationally Notifiable. Cum: Cumulative year-to-date counts. Med: Median. Max: Maximum.

* Case counts for reporting year 2013 are provisional and subject to change. For further information on interpretation of these data, see <http://www.cdc.gov/nndss/document/ProvisionalNationalNotifiableDiseasesSurveillanceData20100927.pdf>. Data for TB are displayed in Table IV, which appears quarterly.

[†] Includes drug resistant and susceptible cases of invasive *Streptococcus pneumoniae* disease among children <5 years and among all ages. Case definition: Isolation of *S. pneumoniae* from a normally sterile body site (e.g., blood or cerebrospinal fluid).

Morbidity and Mortality Weekly Report

TABLE II. (Continued) Provisional cases of selected notifiable diseases, United States, weeks ending November 9, 2013, and November 10, 2012 (45th week)*

Reporting area	Varicella (chickenpox)					West Nile virus disease [†]									
	Current week	Previous 52 weeks		Cum 2013	Cum 2012	Neuroinvasive					Nonneuroinvasive [§]				
		Med	Max			Current week	Med	Max	Cum 2013	Cum 2012	Current week	Med	Max	Cum 2013	Cum 2012
United States	114	207	316	8,723	11,674	—	2	147	1,108	2,847	—	2	153	1,107	2,784
New England	2	19	39	818	1,290	—	0	3	11	42	—	0	2	5	21
Connecticut	—	5	9	186	227	—	0	1	1	12	—	0	1	3	9
Maine	—	3	9	121	237	—	0	0	—	1	—	0	0	—	—
Massachusetts	2	7	15	337	488	—	0	2	7	25	—	0	1	1	8
New Hampshire	—	1	4	57	134	—	0	1	1	1	—	0	0	—	—
Rhode Island	—	0	10	28	66	—	0	1	1	2	—	0	0	—	2
Vermont	—	1	27	89	138	—	0	1	1	1	—	0	1	1	2
Mid. Atlantic	15	22	40	975	1,152	—	0	7	25	116	—	0	6	19	99
New Jersey	—	8	21	322	404	—	0	4	9	22	—	0	2	2	26
New York (Upstate)	N	0	0	N	N	—	0	2	7	35	—	0	4	10	31
New York City	—	0	0	—	—	—	0	1	3	26	—	0	1	2	15
Pennsylvania	15	15	26	653	748	—	0	1	6	33	—	0	1	5	27
E.N. Central	56	63	96	2,706	3,102	—	0	24	145	493	—	0	14	55	252
Illinois	1	12	32	562	805	—	0	19	74	187	—	0	8	30	103
Indiana	7	6	22	270	365	—	0	6	16	45	—	0	1	4	31
Michigan	22	19	44	991	825	—	0	5	23	141	—	0	4	12	61
Ohio	14	13	33	558	714	—	0	3	17	76	—	0	2	4	45
Wisconsin	12	7	22	325	393	—	0	3	15	44	—	0	1	5	12
W.N. Central	4	6	30	255	777	—	0	51	255	222	—	0	67	417	436
Iowa	N	0	0	N	N	—	0	10	23	11	—	0	4	18	20
Kansas	—	0	13	—	347	—	0	7	24	19	—	0	15	43	36
Minnesota	—	0	0	—	—	—	0	6	30	34	—	0	8	49	36
Missouri	2	4	12	187	346	—	0	5	15	17	—	0	1	5	3
Nebraska	1	0	1	8	24	—	0	12	48	40	—	0	28	149	150
North Dakota	1	0	5	28	30	—	0	12	58	39	—	0	9	63	50
South Dakota	—	0	4	32	30	—	0	10	57	62	—	0	12	90	141
S. Atlantic	14	26	49	1,132	1,438	—	0	7	31	183	—	0	3	13	128
Delaware	—	0	2	17	3	—	0	1	3	2	—	0	0	—	7
District of Columbia	—	0	2	10	19	—	0	0	—	8	—	0	0	—	2
Florida	14	13	25	581	735	—	0	1	4	51	—	0	0	—	21
Georgia	—	0	6	36	36	—	0	1	2	45	—	0	1	4	52
Maryland	N	0	0	N	N	—	0	4	11	25	—	0	3	5	22
North Carolina	N	0	0	N	N	—	0	2	3	7	—	0	0	—	—
South Carolina	—	1	13	109	11	—	0	1	3	20	—	0	1	4	9
Virginia	—	7	19	279	428	—	0	2	5	20	—	0	0	—	10
West Virginia	—	2	8	100	206	—	0	0	—	5	—	0	0	—	5
E.S. Central	2	3	9	143	177	—	0	6	41	166	—	0	7	33	188
Alabama	2	3	8	138	167	—	0	1	—	36	—	0	3	7	22
Kentucky	N	0	0	N	N	—	0	1	1	13	—	0	1	2	10
Mississippi	—	0	1	5	10	—	0	5	26	99	—	0	3	18	142
Tennessee	N	0	0	N	N	—	0	3	14	18	—	0	2	6	14
W.S. Central	17	40	212	1,801	2,221	—	0	26	187	1,138	—	0	16	107	1,308
Arkansas	—	4	12	182	208	—	0	3	15	44	—	0	1	3	20
Louisiana	—	1	7	44	61	—	0	7	34	154	—	0	4	20	180
Oklahoma	N	0	0	N	N	—	0	8	45	103	—	0	5	24	87
Texas	17	34	209	1,575	1,952	—	0	15	93	837	—	0	11	60	1,021
Mountain	4	19	44	801	1,402	—	0	29	190	190	—	0	51	331	162
Arizona	4	6	23	306	499	—	0	3	25	87	—	0	2	7	44
Colorado	—	4	15	173	431	—	0	17	89	62	—	0	33	225	69
Idaho	N	0	0	N	N	—	0	5	14	5	—	0	7	26	12
Montana	—	1	6	78	111	—	0	5	10	1	—	0	7	28	5
Nevada	N	0	0	N	N	—	0	4	8	5	—	0	1	3	3
New Mexico	—	1	5	46	88	—	0	4	24	24	—	0	3	14	23
Utah	—	5	13	190	254	—	0	1	4	3	—	0	1	3	2
Wyoming	—	0	2	8	19	—	0	4	16	3	—	0	6	25	4
Pacific	—	2	6	92	115	—	0	27	223	297	—	0	17	127	190
Alaska	—	1	6	53	52	—	0	0	—	—	—	0	0	—	—
California	—	0	2	14	23	—	0	27	223	293	—	0	17	125	179
Hawaii	—	0	4	25	40	—	0	0	—	—	—	0	0	—	—
Oregon	N	0	0	N	N	—	0	0	—	—	—	0	1	1	11
Washington	N	0	0	N	N	—	0	0	—	4	—	0	1	1	—
Territories															
American Samoa	N	—	—	N	N	—	—	—	—	—	—	—	—	—	—
C.N.M.I.	—	—	—	—	—	—	—	—	—	—	—	—	—	—	—
Guam	—	0	5	—	45	—	0	0	—	—	—	0	0	—	—
Puerto Rico	—	4	14	231	70	—	0	0	—	1	—	0	0	—	—
U.S. Virgin Islands	—	0	0	—	—	—	0	0	—	—	—	0	0	—	—

C.N.M.I.: Commonwealth of Northern Mariana Islands.

U: Unavailable. —: No reported cases. N: Not reportable. NN: Not Nationally Notifiable. Cum: Cumulative year-to-date counts. Med: Median. Max: Maximum.

* Case counts for reporting year 2013 are provisional and subject to change. For further information on interpretation of these data, see <http://www.cdc.gov/nndss/document/ProvisionalNationalNotifiableDiseasesSurveillanceData20100927.pdf>. Data for TB are displayed in Table IV, which appears quarterly.

† Updated weekly from reports to the Division of Vector-Borne Infectious Diseases, National Center for Zoonotic, Vector-Borne, and Enteric Diseases (ArboNET Surveillance). Data for California serogroup, eastern equine, Powassan, St. Louis, and western equine diseases are available in Table I.

§ Not reportable in all states. Data from states where the condition is not reportable are excluded from this table, except starting in 2007 for the domestic arboviral diseases and influenza-associated pediatric mortality, and in 2003 for SARS-CoV. Reporting exceptions are available at http://www.cdc.gov/nndss/document/SRCA_FINAL_REPORT_2006-2012_final.xlsx.

Morbidity and Mortality Weekly Report

TABLE III. Deaths in 122 U.S. cities,* week ending November 9, 2013 (45th week)

Reporting area	All causes, by age (years)						P&I†	Total	Reporting area (Continued)	All causes, by age (years)						P&I†	Total
	All Ages	≥65	45-64	25-44	1-24	<1				All Ages	≥65	45-64	25-44	1-24	<1		
New England	533	370	126	24	8	5	34	S. Atlantic	991	628	253	67	24	19	66		
Boston, MA	127	79	36	6	4	2	11	Atlanta, GA	179	119	40	14	3	3	12		
Bridgeport, CT	32	25	7	—	—	—	1	Baltimore, MD	66	47	12	4	3	—	5		
Cambridge, MA	16	12	4	—	—	—	—	Charlotte, NC	142	86	40	10	3	3	9		
Fall River, MA	22	14	7	1	—	—	2	Jacksonville, FL	162	100	41	15	4	2	14		
Hartford, CT	54	38	14	1	—	1	2	Miami, FL	48	31	14	1	2	—	4		
Lowell, MA	30	23	1	6	—	—	1	Norfolk, VA	58	35	15	4	1	3	—		
Lynn, MA	6	4	2	—	—	—	—	Richmond, VA	57	33	17	2	2	3	4		
New Bedford, MA	24	22	2	—	—	—	2	Savannah, GA	43	29	12	2	—	—	1		
New Haven, CT	31	18	10	—	2	1	1	St. Petersburg, FL	68	53	12	1	1	1	4		
Providence, RI	81	60	16	3	1	1	5	Tampa, FL	96	53	32	7	3	1	7		
Somerville, MA	5	4	—	1	—	—	—	Washington, D.C.	65	37	17	6	2	3	6		
Springfield, MA	24	15	6	3	—	—	1	Wilmington, DE	7	5	1	1	—	—	—		
Waterbury, CT	26	20	4	1	1	—	—	E.S. Central	930	595	244	66	15	9	49		
Worcester, MA	55	36	17	2	—	—	8	Birmingham, AL	188	127	45	12	3	1	8		
Mid. Atlantic	1,738	1,259	344	92	30	13	79	Chattanooga, TN	91	58	26	4	1	2	2		
Albany, NY	47	33	10	3	—	1	1	Knoxville, TN	160	110	37	10	3	—	4		
Allentown, PA	34	29	4	—	1	—	2	Lexington, KY	61	41	15	3	—	2	—		
Buffalo, NY	106	75	25	5	1	—	9	Memphis, TN	173	105	51	12	5	—	20		
Camden, NJ	28	13	9	5	1	—	—	Mobile, AL	80	48	21	9	—	2	5		
Elizabeth, NJ	13	8	5	—	—	—	2	Montgomery, AL	49	31	13	4	1	—	2		
Erie, PA	52	39	10	3	—	—	3	Nashville, TN	128	75	36	12	2	2	8		
Jersey City, NJ	21	17	4	—	—	—	1	W.S. Central	1,539	937	407	125	42	28	73		
New York City, NY	969	699	196	52	11	11	37	Austin, TX	92	53	24	9	1	5	4		
Newark, NJ	28	16	3	5	4	—	—	Baton Rouge, LA	92	55	24	8	3	2	4		
Paterson, NJ	24	10	9	3	1	1	1	Corpus Christi, TX	63	37	17	4	4	1	10		
Philadelphia, PA	U	U	U	U	U	U	U	Dallas, TX	198	113	58	16	7	4	15		
Pittsburgh, PA [§]	42	28	11	3	—	—	2	El Paso, TX	119	87	26	2	2	2	1		
Reading, PA	33	27	3	2	1	—	3	Fort Worth, TX	U	U	U	U	U	U	U		
Rochester, NY	138	109	27	—	2	—	9	Houston, TX	393	233	114	29	12	5	11		
Schenectady, NY	24	17	4	3	—	—	1	Little Rock, AR	75	42	7	19	5	2	5		
Scranton, PA	26	20	4	1	1	—	1	New Orleans, LA	71	30	25	13	1	2	3		
Syracuse, NY	105	85	11	5	4	—	6	San Antonio, TX	304	197	78	19	5	5	17		
Trenton, NJ	17	10	6	1	—	—	—	Shreveport, LA	81	48	26	5	2	—	2		
Utica, NY	18	12	3	1	2	—	—	Tulsa, OK	51	42	8	1	—	—	1		
Yonkers, NY	13	12	—	—	1	—	1	Mountain	974	657	241	45	19	11	45		
E.N. Central	1,934	1,318	458	91	36	31	117	Albuquerque, NM	U	U	U	U	U	U	U		
Akron, OH	49	34	11	1	1	2	4	Boise, ID	70	43	21	3	2	1	5		
Canton, OH	32	26	6	—	—	—	1	Colorado Springs, CO	79	56	20	—	1	2	4		
Chicago, IL	283	177	78	20	6	2	18	Denver, CO	89	53	25	5	1	5	5		
Cincinnati, OH	75	55	13	6	—	1	1	Las Vegas, NV	286	191	76	8	11	—	13		
Cleveland, OH	253	177	62	9	3	2	14	Ogden, UT	40	26	11	3	—	—	2		
Columbus, OH	246	171	53	12	4	6	18	Phoenix, AZ	114	68	32	12	1	—	4		
Dayton, OH	120	85	27	8	—	—	7	Pueblo, CO	27	20	4	3	—	—	1		
Detroit, MI	U	U	U	U	U	U	U	Salt Lake City, UT	128	89	30	6	2	1	5		
Evansville, IN	55	40	12	1	1	1	3	Tucson, AZ	141	111	22	5	1	2	6		
Fort Wayne, IN	82	53	21	6	2	—	1	Pacific	1,749	1,219	383	89	31	27	158		
Gary, IN	13	9	4	—	—	—	3	Berkeley, CA	14	13	1	—	—	—	1		
Grand Rapids, MI	55	35	10	1	6	3	2	Fresno, CA	135	86	34	7	4	4	12		
Indianapolis, IN	189	111	54	10	7	7	19	Glendale, CA	35	29	5	—	—	1	6		
Lansing, MI	49	40	7	2	—	—	2	Honolulu, HI	80	63	10	6	1	—	17		
Milwaukee, WI	77	52	20	4	—	1	6	Long Beach, CA	60	48	9	1	2	—	8		
Peoria, IL	60	38	15	5	1	1	5	Los Angeles, CA	274	182	66	17	2	7	33		
Rockford, IL	77	58	19	—	—	—	5	Pasadena, CA	22	15	5	1	1	—	—		
South Bend, IN	64	45	15	3	—	1	5	Portland, OR	114	82	16	13	1	2	4		
Toledo, OH	100	71	23	2	2	2	1	Sacramento, CA	229	152	64	9	—	4	18		
Youngstown, OH	55	41	8	1	3	2	2	San Diego, CA	160	105	37	10	6	2	10		
W.N. Central	692	471	153	43	18	6	56	San Francisco, CA	114	83	22	8	—	1	15		
Des Moines, IA	69	53	9	7	—	—	1	San Jose, CA	183	140	31	10	2	—	11		
Duluth, MN	30	22	7	1	—	—	1	Santa Cruz, CA	38	24	12	1	1	—	2		
Kansas City, KS	32	21	8	3	—	—	3	Seattle, WA	93	58	22	3	5	5	2		
Kansas City, MO	113	82	22	4	3	1	10	Spokane, WA	63	49	12	—	1	1	6		
Lincoln, NE	52	37	13	1	1	—	4	Tacoma, WA	135	90	37	3	5	—	13		
Minneapolis, MN	59	39	14	3	2	1	4	Total¶	11,080	7,454	2,609	642	223	149	677		
Omaha, NE	78	55	17	5	1	—	9										
St. Louis, MO	95	46	32	10	4	3	9										
St. Paul, MN	63	49	11	2	1	—	3										
Wichita, KS	101	67	20	7	6	1	12										

U: Unavailable. —: No reported cases.

* Mortality data in this table are voluntarily reported from 122 cities in the United States, most of which have populations of >100,000. A death is reported by the place of its occurrence and by the week that the death certificate was filed. Fetal deaths are not included.

† Pneumonia and influenza.

§ Because of changes in reporting methods in this Pennsylvania city, these numbers are partial counts for the current week. Complete counts will be available in 4 to 6 weeks.

¶ Total includes unknown ages.