

Notifiable Diseases and Mortality Tables

TABLE I. Provisional cases of infrequently reported notifiable diseases (<1,000 cases reported during the preceding year) — United States, week ending March 15, 2014 (11th week)* (Export data)

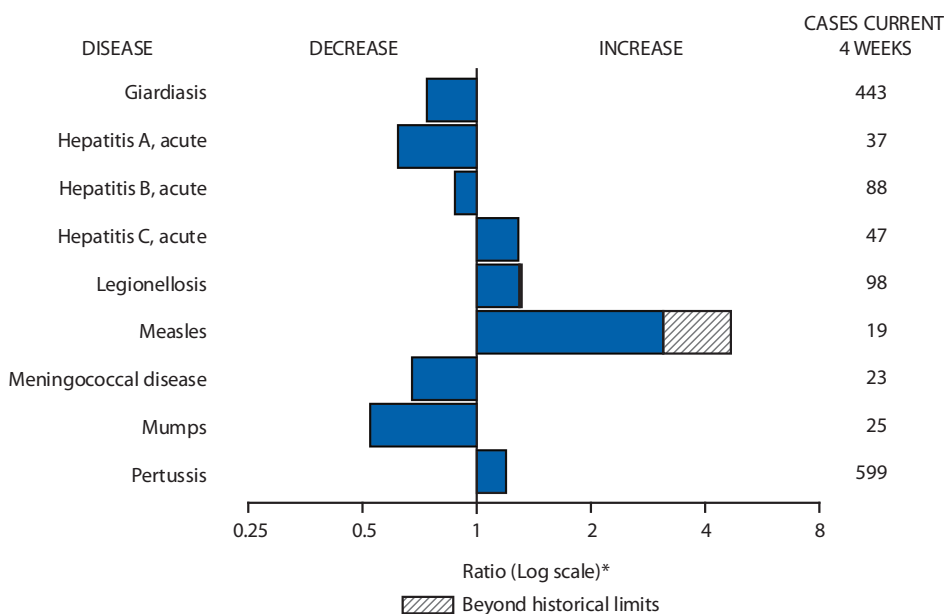
Disease	Current week	Cum 2014	5-year weekly average [†]	Total cases reported for previous years					States reporting cases during current week (No.)
				2013	2012	2011	2010	2009	
Anthrax	—	—	—	—	—	1	—	1	
Arboviral diseases ^{§, ¶} :									
California serogroup virus disease	—	—	0	84	81	137	75	55	
Eastern equine encephalitis virus disease	—	—	0	7	15	4	10	4	
Powassan virus disease	—	—	—	14	7	16	8	6	
St. Louis encephalitis virus disease	—	—	—	—	3	6	10	12	
Western equine encephalitis virus disease	—	—	—	—	—	—	—	—	
Botulism, total	—	26	2	150	168	153	112	118	
foodborne	—	—	0	7	27	24	7	10	
infant	—	20	2	127	123	97	80	83	
other (wound and unspecified)	—	6	0	16	18	32	25	25	
Brucellosis	—	9	2	115	114	79	115	115	
Chancroid	—	4	1	11	15	8	24	28	
Cholera	—	—	0	2	17	40	13	10	
Cyclosporiasis [§]	1	15	1	714	123	151	179	141	NYC (1)
Diphtheria	—	—	0	—	1	—	—	—	
<i>Haemophilus influenzae</i> ,** invasive disease (age <5 yrs):									
serotype b	—	4	1	24	30	14	23	35	
nonsertotype b	—	35	5	194	205	145	200	236	
unknown serotype	5	70	4	210	210	226	223	178	PA (1), OH (2), FL (1), UT (1)
Hansen disease [§]	—	5	1	74	82	82	98	103	
Hantavirus pulmonary syndrome [§]	—	2	0	14	30	23	20	20	
Hemolytic uremic syndrome, postdiarrheal [§]	1	12	3	257	274	290	266	242	FL (1)
Hepatitis B, virus infection perinatal	—	7	1	59	40	U	U	U	
Influenza-associated pediatric mortality ^{§, ††}	7	66	4	164	52	118	61	358	PA (1), WI (1), FL (1), TX (3), CA (1)
Leptospirosis	—	1	0	NN	NN	NN	NN	NN	
Listeriosis	2	84	9	757	727	870	821	851	NY (1), NC (1)
Measles ^{§§}	5	80	2	187	55	220	63	71	NYC (1), CA (4)
Meningococcal disease, invasive ^{¶¶} :									
A, C, Y, and W-135	—	26	7	126	161	257	280	301	
serogroup B	—	13	4	86	110	159	135	174	
other serogroup	—	3	1	15	20	20	12	23	
unknown serogroup	2	57	9	305	260	323	406	482	OH (1), FL (1)
Novel influenza A virus infections ^{***}	—	—	15	21	313	14	4	43,774	
Plague	—	—	—	4	4	3	2	8	
Poliomyelitis, paralytic	—	—	—	1	—	—	—	1	
Polio virus Infection, nonparalytic [§]	—	—	—	—	—	—	—	—	
Psittacosis [§]	—	—	0	7	2	2	4	9	
Q fever, total [§]	1	11	2	168	135	134	131	113	
acute	—	7	1	131	113	110	106	93	
chronic	1	4	0	37	22	24	25	20	OH (1)
Rabies, human	—	—	0	—	1	6	2	4	
Rubella ^{†††}	—	—	0	9	9	4	5	3	
Rubella, congenital syndrome	—	—	0	1	3	—	—	2	
SARS-CoV [§]	—	—	—	—	—	—	—	—	
Smallpox [§]	—	—	—	—	—	—	—	—	
Streptococcal toxic-shock syndrome [§]	1	24	5	142	194	168	142	161	OH (1)
Syphilis, congenital (age <1 yr) ^{§§§}	—	17	7	219	322	360	377	423	
Tetanus	—	4	0	24	37	36	26	18	
Toxic-shock syndrome (staphylococcal) [§]	3	14	1	73	65	78	82	74	OH (1), MI (1), CA (1)
Trichinellosis	—	1	0	19	18	15	7	13	
Tularemia	1	2	0	202	149	166	124	93	ID (1)
Typhoid fever	3	38	6	352	354	390	467	397	MD (1), VA (1), FL (1)
Vancomycin-intermediate <i>Staphylococcus aureus</i> [§]	1	34	2	224	134	82	91	78	MO (1)
Vancomycin-resistant <i>Staphylococcus aureus</i> [§]	—	—	0	—	2	—	2	1	
Vibriosis (noncholera <i>Vibrio</i> species infections) [§]	2	58	6	1,240	1,111	832	846	789	FL (2)
Viral hemorrhagic fever ^{¶¶¶}	—	—	—	—	—	—	1	NN	
Yellow fever	—	—	—	—	—	—	—	—	

See Table 1 footnotes on next page.

TABLE I. (Continued) Provisional cases of infrequently reported notifiable diseases (<1,000 cases reported during the preceding year) — United States, week ending March 15, 2014 (11th week)*

—: No reported cases. N: Not reportable. NN: Not Nationally Notifiable. Cum: Cumulative year-to-date counts.
 * Case counts for reporting years 2013 and 2014 are provisional and subject to change. For further information on interpretation of these data, see <http://www.cdc.gov/ncphi/diss/nndss/pdfs/files/ProvisionalNationalNotifiableDiseasesSurveillanceData20100927.pdf>.
 † Calculated by summing the incidence counts for the current week, the 2 weeks preceding the current week, and the 2 weeks following the current week, for a total of 5 preceding years. Additional information is available at <http://www.cdc.gov/nndss/document/5yearweeklyaverage.pdf>.
 ‡ Not reportable in all states. Data from states where the condition is not reportable are excluded from this table except starting in 2007 for the arboviral diseases, STD data, TB data, and influenza-associated pediatric mortality, and in 2003 for SARS-CoV. Reporting exceptions are available at http://www.cdc.gov/nndss/document/SRCA_FINAL_REPORT_2006-2012_final.xlsx.
 § Includes both neuroinvasive and nonneuroinvasive. Updated weekly from reports to the Division of Vector-Borne Infectious Diseases, National Center for Zoonotic, Vector-Borne, and Enteric Diseases (ArboNET Surveillance). Data for West Nile virus are available in Table II.
 ** Data for *H. influenzae* (all ages, all serotypes) are available in Table II.
 †† Updated weekly from reports to the Influenza Division, National Center for Immunization and Respiratory Diseases. Since September 29, 2013, 75 influenza-associated pediatric deaths occurring during the 2013-14 influenza season have been reported.
 ‡‡ Of the five measles cases reported for the current week, one was indigenous and four were imported.
 §§ Data for meningococcal disease (all serogroups) are available in Table II.
 ¶¶ CDC discontinued reporting of individual confirmed and probable cases of influenza A (H1N1)pdm09 virus infections on July 24, 2009. During 2009, four cases of human infection with novel influenza A viruses, different from the influenza A (H1N1)pdm09 virus, were reported to CDC. The four cases of novel influenza A virus infection reported to CDC during 2010, the fourteen cases reported during 2011, the 313 cases reported in 2012, and the 21 cases reported during 2013 are different from the influenza A (H1N1)pdm09 virus. Total case counts are provided by the Influenza Division, National Center for Immunization and Respiratory Diseases (NCIRD).
 ††† No rubella cases were reported for the current week.
 §§§ Updated weekly from reports to the Division of STD Prevention, National Center for HIV/AIDS, Viral Hepatitis, STD, and TB Prevention.
 ¶¶¶ There were no cases of viral hemorrhagic fever reported during the current week. See Table II for dengue hemorrhagic fever.

FIGURE I. Selected notifiable disease reports, United States, comparison of provisional 4-week totals March 15, 2014, with historical data



* Ratio of current 4-week total to mean of 15 4-week totals (from previous, comparable, and subsequent 4-week periods for the past 5 years). The point where the hatched area begins is based on the mean and two standard deviations of these 4-week totals.

Notifiable Disease Data Team and 122 Cities Mortality Data Team

Umed Ajani
 Deborah A. Adams Willie J. Anderson
 Lenee Blanton Rosaline Dhara
 Diana Harris Onweh Alan W. Schley
 Pearl C. Sharp

Morbidity and Mortality Weekly Report

TABLE II. Provisional cases of selected notifiable diseases, United States, weeks ending March 15, 2014, and March 16, 2013 (11th week)* (Export data)

Reporting area	<i>Babesiosis</i>					<i>Chlamydia trachomatis</i> infection					<i>Coccidioidomycosis</i>				
	Current week	Previous 52 weeks		Cum 2014	Cum 2013	Current week	Previous 52 weeks		Cum 2014	Cum 2013	Current week	Previous 52 weeks		Cum 2014	Cum 2013
		Med	Max				Med	Max				Med	Max		
United States	—	15	141	17	24	14,935	26,725	28,947	239,924	297,447	25	178	295	1,011	2,171
New England	—	4	82	11	14	717	890	1,156	8,149	10,363	—	0	0	—	1
Connecticut	—	1	36	1	9	3	229	379	2,181	2,777	N	0	0	N	N
Maine	—	0	6	1	—	106	69	110	780	665	N	0	0	N	N
Massachusetts	—	2	48	6	4	473	425	680	3,933	4,808	—	0	0	—	—
New Hampshire	—	0	1	2	1	—	59	75	78	701	—	0	0	—	1
Rhode Island	—	0	27	1	—	135	80	147	836	920	—	0	0	—	—
Vermont	—	0	1	—	—	—	33	96	341	492	N	0	0	N	N
Mid. Atlantic	—	7	56	6	7	1,874	3,351	3,731	32,515	36,636	—	0	0	—	—
New Jersey	—	0	24	1	2	183	558	686	5,464	5,921	N	0	0	N	N
New York (Upstate)	—	3	53	3	4	813	723	1,757	6,712	6,941	N	0	0	N	N
New York City	—	0	12	2	1	—	1,075	1,233	9,944	12,671	N	0	0	N	N
Pennsylvania	N	0	0	N	N	878	987	1,324	10,395	11,103	N	0	0	N	N
E.N. Central	—	0	11	—	1	1,259	3,913	4,431	32,066	45,342	—	0	3	12	5
Illinois	—	0	0	—	—	36	1,064	1,309	5,647	13,356	N	0	0	N	N
Indiana	—	0	1	—	1	265	559	792	5,305	6,091	N	0	0	N	N
Michigan	—	0	1	—	—	369	847	1,094	7,409	9,267	—	0	3	10	1
Ohio	N	0	0	N	N	342	1,027	1,149	9,141	11,598	—	0	2	2	2
Wisconsin	—	0	11	—	—	247	424	517	4,564	5,030	—	0	0	—	2
W.N. Central	—	0	1	—	—	378	1,569	1,814	13,472	16,701	—	1	7	5	1
Iowa	N	0	0	N	N	50	209	254	2,210	2,104	N	0	0	N	N
Kansas	N	0	0	N	N	89	213	246	2,040	2,262	N	0	0	N	N
Minnesota	—	0	0	—	—	—	350	419	1,302	4,083	—	0	5	—	—
Missouri	N	0	0	N	N	92	548	627	5,076	5,432	—	0	3	3	—
Nebraska	—	0	1	—	—	130	146	227	1,569	1,344	—	0	1	1	—
North Dakota	—	0	1	—	—	13	54	78	573	592	—	0	2	1	1
South Dakota	—	0	0	—	—	4	74	95	702	884	N	0	0	N	N
S. Atlantic	—	0	2	—	1	5,443	5,359	6,689	54,462	60,627	—	0	1	1	1
Delaware	—	0	1	—	1	135	85	220	827	1,315	—	0	1	—	—
District of Columbia	N	0	0	N	N	—	102	200	—	1,713	—	0	1	—	—
Florida	N	0	0	N	N	915	1,571	1,754	16,421	16,552	N	0	0	N	N
Georgia	N	0	0	N	N	764	973	2,028	8,948	10,462	N	0	0	N	N
Maryland	—	0	2	—	—	374	466	878	3,810	4,579	—	0	1	1	1
North Carolina	N	0	0	N	N	1,667	944	1,384	10,937	11,792	N	0	0	N	N
South Carolina	—	0	0	—	—	540	515	927	5,805	5,757	N	0	0	N	N
Virginia	N	0	0	N	N	948	629	1,267	6,762	7,391	N	0	0	N	N
West Virginia	—	0	1	—	—	100	98	127	952	1,066	N	0	0	N	N
E.S. Central	—	0	0	—	—	569	1,719	2,216	13,505	19,972	—	0	0	—	—
Alabama	—	0	0	—	—	—	553	874	3,613	6,007	N	0	0	N	N
Kentucky	N	0	0	N	N	398	327	471	3,604	3,610	N	0	0	N	N
Mississippi	N	0	0	N	N	—	339	989	3,738	3,951	N	0	0	N	N
Tennessee	—	0	0	—	—	171	567	844	2,550	6,404	N	0	0	N	N
W.S. Central	—	0	1	—	—	2,383	3,506	4,387	29,916	41,583	—	0	1	—	2
Arkansas	N	0	0	N	N	407	281	421	2,893	3,569	N	0	0	N	N
Louisiana	—	0	1	—	—	1	495	852	500	4,327	—	0	1	—	2
Oklahoma	N	0	0	N	N	—	269	599	1,585	5,357	N	0	0	N	N
Texas	N	0	0	N	N	1,975	2,458	2,995	24,938	28,330	N	0	0	N	N
Mountain	—	0	0	—	—	445	1,694	2,308	19,248	18,425	—	104	213	670	1,456
Arizona	N	0	0	N	N	—	529	1,124	8,125	4,616	—	101	211	652	1,433
Colorado	N	0	0	N	N	249	383	586	4,395	4,483	N	0	0	N	N
Idaho	N	0	0	N	N	—	101	233	498	1,093	N	0	0	N	N
Montana	—	0	0	—	—	79	76	104	822	810	—	0	1	1	—
Nevada	N	0	0	N	N	—	213	323	1,546	2,345	—	2	6	8	9
New Mexico	N	0	0	N	N	—	206	359	1,951	3,253	—	0	3	—	6
Utah	—	0	0	—	—	111	148	169	1,597	1,497	—	1	4	9	7
Wyoming	—	0	0	—	—	6	28	64	314	328	—	0	1	—	1
Pacific	—	0	2	—	1	1,867	4,200	4,654	36,591	47,798	25	66	91	323	705
Alaska	N	0	0	N	N	28	109	145	1,035	1,285	—	0	0	—	—
California	—	0	2	—	1	1,200	3,208	3,539	27,465	36,860	25	66	91	323	704
Hawaii	N	0	0	N	N	6	128	158	1,040	1,383	N	0	0	N	N
Oregon	—	0	0	—	—	327	282	475	3,146	2,874	—	0	1	—	1
Washington	—	0	0	—	—	306	468	596	3,905	5,396	N	0	0	N	N
Territories															
American Samoa	N	—	—	N	N	—	—	—	—	—	N	—	—	N	N
C.N.M.I.	—	—	—	—	—	—	—	—	—	—	—	—	—	—	—
Guam	—	0	0	—	—	—	0	0	—	—	—	0	0	—	—
Puerto Rico	N	0	0	N	N	—	112	277	904	1,255	N	0	0	N	N
U.S. Virgin Islands	N	0	0	N	N	—	15	25	68	153	—	0	0	—	—

C.N.M.I.: Commonwealth of Northern Mariana Islands.

U: Unavailable. —: No reported cases. N: Not reportable. NN: Not Nationally Notifiable. Cum: Cumulative year-to-date counts. Med: Median. Max: Maximum.

* Case counts for reporting year 2013 and 2014 are provisional and subject to change. For further information on interpretation of these data, see <http://www.cdc.gov/nndss/document/ProvisionalNationalNotifiableDiseasesSurveillanceData20100927.pdf>. Data for TB are displayed in Table IV, which appears quarterly.

Morbidity and Mortality Weekly Report

TABLE II. (Continued) Provisional cases of selected notifiable diseases, United States, weeks ending March 15, 2014, and March 16, 2013 (11th week)* (Export data)

Reporting area	Dengue Virus Infection														
	Cryptosporidiosis					Dengue Fever†					Dengue Hemorrhagic Fever§				
	Current week	Previous 52 weeks		Cum 2014	Cum 2013	Current week	Previous 52 weeks		Cum 2014	Cum 2013	Current week	Previous 52 weeks		Cum 2014	Cum 2013
	Med	Max				Med	Max				Med	Max			
United States	44	106	445	811	1,011	—	10	43	18	128	—	0	2	—	1
New England	2	4	14	36	30	—	0	3	2	8	—	0	0	—	—
Connecticut	—	0	5	7	5	—	0	2	—	3	—	0	0	—	—
Maine	—	0	4	9	4	—	0	0	—	1	—	0	0	—	—
Massachusetts	2	2	7	15	16	—	0	0	—	—	—	0	0	—	—
New Hampshire	—	1	2	2	2	—	0	1	—	3	—	0	0	—	—
Rhode Island	—	0	2	1	—	—	0	1	—	—	—	0	0	—	—
Vermont	—	0	2	2	3	—	0	2	2	1	—	0	0	—	—
Mid. Atlantic	8	12	42	91	112	—	2	12	4	44	—	0	1	—	—
New Jersey	—	0	5	3	9	—	0	0	—	—	—	0	0	—	—
New York (Upstate)	—	4	16	23	28	—	0	3	—	13	—	0	1	—	—
New York City	4	1	6	17	9	—	1	9	1	21	—	0	1	—	—
Pennsylvania	4	5	30	48	66	—	0	3	3	10	—	0	0	—	—
E.N. Central	8	23	64	142	226	—	1	6	5	16	—	0	0	—	—
Illinois	—	4	16	4	32	—	0	3	1	5	—	0	0	—	—
Indiana	—	2	7	9	28	—	0	1	—	2	—	0	0	—	—
Michigan	1	4	15	29	39	—	0	3	—	3	—	0	0	—	—
Ohio	6	6	17	54	71	—	0	2	3	3	—	0	0	—	—
Wisconsin	1	7	25	46	56	—	0	1	1	3	—	0	0	—	—
W.N. Central	1	16	171	86	119	—	1	3	2	5	—	0	1	—	1
Iowa	—	6	155	27	35	—	0	0	—	—	—	0	1	—	—
Kansas	—	2	6	7	13	—	0	1	—	1	—	0	0	—	—
Minnesota	—	0	0	—	—	—	0	2	—	3	—	0	1	—	—
Missouri	1	3	11	24	36	—	0	2	2	—	—	0	0	—	—
Nebraska	—	2	11	8	15	—	0	0	—	—	—	0	0	—	—
North Dakota	—	1	7	6	4	—	0	1	—	—	—	0	0	—	—
South Dakota	—	3	17	14	16	—	0	1	—	1	—	0	0	—	—
S. Atlantic	9	20	58	240	219	—	1	9	2	33	—	0	1	—	—
Delaware	—	0	2	2	1	—	0	1	—	—	—	0	0	—	—
District of Columbia	N	0	0	N	N	—	0	0	—	—	—	0	0	—	—
Florida	5	8	23	101	56	—	0	6	—	21	—	0	0	—	—
Georgia	—	4	16	49	62	—	0	2	—	—	—	0	0	—	—
Maryland	2	1	4	12	10	—	0	1	2	2	—	0	0	—	—
North Carolina	—	0	28	39	42	—	0	2	—	4	—	0	0	—	—
South Carolina	—	1	7	11	22	—	0	4	—	1	—	0	0	—	—
Virginia	2	2	9	26	21	—	0	3	—	5	—	0	1	—	—
West Virginia	—	0	2	—	5	—	0	1	—	—	—	0	0	—	—
E.S. Central	1	6	18	44	51	—	0	2	—	4	—	0	0	—	—
Alabama	—	2	8	17	22	—	0	2	—	1	—	0	0	—	—
Kentucky	—	1	5	9	9	—	0	0	—	—	—	0	0	—	—
Mississippi	1	0	5	3	8	—	0	0	—	1	—	0	0	—	—
Tennessee	—	1	6	15	12	—	0	2	—	2	—	0	0	—	—
W.S. Central	4	12	42	56	92	—	1	11	1	4	—	0	0	—	—
Arkansas	1	1	12	3	3	—	0	1	—	—	—	0	0	—	—
Louisiana	1	3	31	19	43	—	0	1	—	—	—	0	0	—	—
Oklahoma	—	1	4	4	7	—	0	2	—	—	—	0	0	—	—
Texas	2	6	34	30	39	—	1	11	1	4	—	0	0	—	—
Mountain	2	8	54	48	71	—	0	1	1	—	—	0	0	—	—
Arizona	—	1	6	10	5	—	0	1	—	—	—	0	0	—	—
Colorado	—	2	7	5	8	—	0	0	—	—	—	0	0	—	—
Idaho	2	2	16	13	14	—	0	1	—	—	—	0	0	—	—
Montana	—	1	20	2	5	—	0	1	—	—	—	0	0	—	—
Nevada	—	0	2	1	3	—	0	1	1	—	—	0	0	—	—
New Mexico	—	1	3	8	7	—	0	0	—	—	—	0	0	—	—
Utah	—	1	8	8	28	—	0	0	—	—	—	0	0	—	—
Wyoming	—	0	25	1	1	—	0	1	—	—	—	0	0	—	—
Pacific	9	10	75	68	91	—	1	8	1	14	—	0	0	—	—
Alaska	—	0	1	—	—	—	0	0	—	1	—	0	0	—	—
California	7	5	15	49	57	—	1	8	—	10	—	0	0	—	—
Hawaii	—	0	1	—	—	—	0	2	—	1	—	0	0	—	—
Oregon	—	2	58	15	25	—	0	0	—	—	—	0	0	—	—
Washington	2	1	12	4	9	—	0	2	1	2	—	0	0	—	—
Territories															
American Samoa	N	—	—	N	N	—	—	—	—	—	—	—	—	—	—
C.N.M.I.	—	—	—	—	—	—	—	—	—	—	—	—	—	—	—
Guam	—	0	0	—	—	—	0	0	—	—	—	0	0	—	—
Puerto Rico	N	0	0	N	N	—	77	424	87	2,141	—	0	5	1	8
U.S. Virgin Islands	—	0	0	—	—	—	0	0	—	—	—	0	0	—	—

C.N.M.I.: Commonwealth of Northern Mariana Islands.

U: Unavailable. —: No reported cases. N: Not reportable. NN: Not Nationally Notifiable. Cum: Cumulative year-to-date counts. Med: Median. Max: Maximum.

* Case counts for reporting year 2013 and 2014 are provisional and subject to change. For further information on interpretation of these data, see <http://www.cdc.gov/nndss/document/ProvisionalNationalNotifiableDiseasesSurveillanceData20100927.pdf>. Data for TB are displayed in Table IV, which appears quarterly.

† Dengue Fever includes cases that meet criteria for Dengue Fever with hemorrhage, other clinical and unknown case classifications.

§ DHF includes cases that meet criteria for dengue shock syndrome (DSS), a more severe form of DHF.

Morbidity and Mortality Weekly Report

TABLE II. (Continued) Provisional cases of selected notifiable diseases, United States, weeks ending March 15, 2014, and March 16, 2013 (11th week)* (Export data)

Reporting area	Ehrlichiosis/Anaplasmosis†														
	<i>Ehrlichia chaffeensis</i>					<i>Anaplasma phagocytophilum</i>					Undetermined				
	Current week	Previous 52 weeks		Cum 2014	Cum 2013	Current week	Previous 52 weeks		Cum 2014	Cum 2013	Current week	Previous 52 weeks		Cum 2014	Cum 2013
	Med	Max				Med	Max				Med	Max			
United States	—	16	99	7	20	—	29	101	22	33	—	3	21	—	4
New England	—	0	9	—	1	—	5	29	5	6	—	0	1	—	—
Connecticut	—	0	0	—	—	—	1	14	—	5	—	0	0	—	—
Maine	—	0	1	—	—	—	1	8	2	—	—	0	1	—	—
Massachusetts	—	0	0	—	—	—	0	0	—	—	—	0	0	—	—
New Hampshire	—	0	1	—	1	—	1	8	—	1	—	0	1	—	—
Rhode Island	—	0	9	—	—	—	0	16	1	—	—	0	0	—	—
Vermont	—	0	1	—	—	—	0	3	2	—	—	0	0	—	—
Mid. Atlantic	—	2	16	1	2	—	8	30	7	5	—	0	3	—	—
New Jersey	—	0	1	—	—	—	0	4	—	2	—	0	1	—	—
New York (Upstate)	—	1	16	1	1	—	7	27	7	1	—	0	3	—	—
New York City	—	0	5	—	1	—	0	4	—	2	—	0	1	—	—
Pennsylvania	—	0	1	—	—	—	0	0	—	—	—	0	0	—	—
E.N. Central	—	1	8	1	2	—	10	48	4	16	—	1	17	—	4
Illinois	—	0	7	—	—	—	0	2	—	1	—	0	0	—	—
Indiana	—	0	0	—	—	—	0	0	—	—	—	0	12	—	2
Michigan	—	0	0	—	—	—	0	0	—	—	—	0	3	—	1
Ohio	—	0	1	—	1	—	0	1	—	—	—	0	1	—	—
Wisconsin	—	0	6	1	1	—	10	48	4	15	—	0	5	—	1
W.N. Central	—	2	45	2	1	—	0	4	2	—	—	0	2	—	—
Iowa	N	0	0	N	N	N	0	0	N	N	N	0	0	N	N
Kansas	—	1	8	—	1	—	0	1	—	—	—	0	0	—	—
Minnesota	—	0	0	—	—	—	0	1	—	—	—	0	0	—	—
Missouri	—	1	39	2	—	—	0	2	2	—	—	0	2	—	—
Nebraska	—	0	1	—	—	—	0	1	—	—	—	0	0	—	—
North Dakota	—	0	0	—	—	—	0	2	—	—	—	0	1	—	—
South Dakota	—	0	1	—	—	—	0	0	—	—	—	0	0	—	—
S. Atlantic	—	3	28	2	10	—	1	5	4	4	—	0	2	—	—
Delaware	—	0	2	—	—	—	0	1	1	—	—	0	1	—	—
District of Columbia	N	0	0	N	N	N	0	0	N	N	N	0	0	N	N
Florida	—	0	3	1	—	—	0	1	—	—	—	0	0	—	—
Georgia	—	0	1	—	7	—	0	1	—	1	—	0	0	—	—
Maryland	—	0	5	1	—	—	0	2	3	1	—	0	1	—	—
North Carolina	—	0	12	—	2	—	0	3	—	1	—	0	0	—	—
South Carolina	—	0	2	—	—	—	0	0	—	—	—	0	0	—	—
Virginia	—	1	8	—	1	—	0	3	—	—	—	0	1	—	—
West Virginia	—	0	1	—	—	—	0	1	—	1	—	0	1	—	—
E.S. Central	—	1	14	1	2	—	0	1	—	1	—	0	3	—	—
Alabama	—	0	2	1	—	—	0	1	—	—	—	0	1	—	—
Kentucky	—	1	7	—	1	—	0	0	—	—	—	0	0	—	—
Mississippi	—	0	1	—	—	—	0	0	—	—	—	0	1	—	—
Tennessee	—	0	9	—	1	—	0	1	—	1	—	0	3	—	—
W.S. Central	—	2	37	—	2	—	0	1	—	1	—	0	0	—	—
Arkansas	—	2	17	—	1	—	0	1	—	—	—	0	0	—	—
Louisiana	—	0	1	—	—	—	0	1	—	—	—	0	0	—	—
Oklahoma	—	0	34	—	1	—	0	1	—	1	—	0	0	—	—
Texas	—	0	1	—	—	—	0	0	—	—	—	0	0	—	—
Mountain	—	0	1	—	—	—	0	1	—	—	—	0	1	—	—
Arizona	—	0	0	—	—	—	0	0	—	—	—	0	1	—	—
Colorado	N	0	0	N	N	N	0	0	N	N	N	0	0	N	N
Idaho	N	0	0	N	N	N	0	0	N	N	N	0	0	N	N
Montana	—	0	0	—	—	—	0	0	—	—	—	0	0	—	—
Nevada	—	0	0	—	—	—	0	1	—	—	—	0	0	—	—
New Mexico	N	0	0	N	N	N	0	0	N	N	N	0	0	N	N
Utah	—	0	1	—	—	—	0	0	—	—	—	0	0	—	—
Wyoming	—	0	0	—	—	—	0	0	—	—	—	0	0	—	—
Pacific	—	0	0	—	—	—	0	1	—	—	—	0	1	—	—
Alaska	N	0	0	N	N	N	0	0	N	N	N	0	0	N	N
California	—	0	0	—	—	—	0	0	—	—	—	0	1	—	—
Hawaii	N	0	0	N	N	N	0	0	N	N	N	0	0	N	N
Oregon	—	0	0	—	—	—	0	1	—	—	—	0	0	—	—
Washington	—	0	0	—	—	—	0	0	—	—	—	0	0	—	—
Territories															
American Samoa	N	—	—	N	N	N	—	—	N	N	N	—	—	N	N
C.N.M.I.	—	—	—	—	—	—	—	—	—	—	—	—	—	—	—
Guam	N	0	0	N	N	N	0	0	N	N	N	0	0	N	N
Puerto Rico	N	0	0	N	N	N	0	0	N	N	N	0	0	N	N
U.S. Virgin Islands	—	0	0	—	—	—	0	0	—	—	—	0	0	—	—

C.N.M.I.: Commonwealth of Northern Mariana Islands.

U: Unavailable. —: No reported cases. N: Not reportable. NN: Not Nationally Notifiable. Cum: Cumulative year-to-date counts. Med: Median. Max: Maximum.

* Case counts for reporting year 2013 and 2014 are provisional and subject to change. For further information on interpretation of these data, see <http://www.cdc.gov/nndss/document/ProvisionalNationalNotifiableDiseasesSurveillanceData20100927.pdf>. Data for TB are displayed in Table IV, which appears quarterly.

† Cumulative total *E. ewingii* cases reported for year 2013 = 29, and 0 cases reported for 2014.

Morbidity and Mortality Weekly Report

TABLE II. (Continued) Provisional cases of selected notifiable diseases, United States, weeks ending March 15, 2014, and March 16, 2013 (11th week)* (Export data)

Reporting area	Giardiasis					Gonorrhea					Haemophilus influenzae, invasive† All ages, all serotypes				
	Current week	Previous 52 weeks		Cum 2014	Cum 2013	Current week	Previous 52 weeks		Cum 2014	Cum 2013	Current week	Previous 52 weeks		Cum 2014	Cum 2013
		Med	Max				Med	Max				Med	Max		
United States	121	243	421	1,994	2,551	3,386	6,259	6,932	56,912	68,781	21	62	95	647	921
New England	8	23	56	206	207	65	131	192	1,316	1,263	1	4	12	36	57
Connecticut	—	5	11	30	35	1	52	112	458	519	—	1	5	2	13
Maine	5	4	12	33	28	5	5	10	58	55	1	0	2	4	8
Massachusetts	—	12	26	113	114	50	63	100	667	572	—	2	7	22	28
New Hampshire	—	1	7	7	9	—	2	8	28	33	—	0	3	4	5
Rhode Island	3	0	7	8	7	9	6	42	99	55	—	0	10	2	—
Vermont	—	2	14	15	14	—	1	6	6	29	—	0	2	2	3
Mid. Atlantic	44	49	90	452	468	391	765	915	7,228	8,333	3	11	24	101	145
New Jersey	—	5	12	20	70	33	133	167	1,189	1,459	—	2	7	21	31
New York (Upstate)	15	18	60	157	136	123	119	325	1,080	1,231	2	3	18	23	27
New York City	22	13	24	144	141	—	249	311	2,275	2,973	—	2	7	21	29
Pennsylvania	7	14	27	131	121	235	273	326	2,684	2,670	1	4	9	36	58
E.N. Central	7	36	66	214	350	310	993	1,146	7,868	11,921	5	12	19	95	142
Illinois	—	6	23	12	56	6	259	351	1,171	3,411	—	3	6	16	41
Indiana	—	3	11	14	33	59	145	209	1,340	1,483	—	3	6	14	27
Michigan	1	10	27	66	78	97	191	266	1,728	2,429	1	2	5	17	19
Ohio	6	9	25	68	101	102	315	391	2,790	3,661	4	3	9	37	36
Wisconsin	—	7	15	54	82	46	79	122	839	937	—	1	4	11	19
W.N. Central	4	16	41	100	171	98	335	421	2,917	3,392	2	4	9	40	58
Iowa	2	5	15	33	33	9	27	41	258	334	—	0	0	—	—
Kansas	—	2	6	7	20	21	42	66	435	344	—	0	3	6	15
Minnesota	—	0	0	—	—	—	74	107	464	757	—	1	5	—	11
Missouri	—	5	15	25	62	52	150	180	1,310	1,439	2	2	6	28	23
Nebraska	—	3	9	20	32	16	25	48	252	285	—	0	3	3	6
North Dakota	—	0	3	2	8	—	9	20	103	91	—	0	2	3	2
South Dakota	2	2	9	13	16	—	14	27	95	142	—	0	1	—	1
S. Atlantic	24	43	101	410	480	1,255	1,389	1,752	13,984	15,505	6	17	29	190	267
Delaware	—	0	3	3	2	27	25	65	268	268	—	0	1	4	5
District of Columbia	—	0	3	1	15	—	43	85	—	415	—	0	2	1	6
Florida	17	20	56	187	212	216	397	493	4,158	4,330	2	5	13	77	65
Georgia	—	11	45	120	136	191	265	594	2,278	3,128	—	2	8	25	59
Maryland	3	4	9	53	49	105	116	174	877	925	—	2	4	14	27
North Carolina	N	0	0	N	N	508	268	460	3,298	3,203	2	2	8	36	40
South Carolina	2	2	7	21	23	157	144	279	1,712	1,572	2	2	7	16	42
Virginia	2	4	12	21	35	37	123	281	1,233	1,478	—	2	6	13	17
West Virginia	—	1	4	4	8	14	20	34	160	186	—	0	3	4	6
E.S. Central	—	3	8	29	37	98	443	600	3,498	5,607	2	4	12	55	80
Alabama	—	3	8	29	37	—	148	257	962	1,709	—	1	4	22	32
Kentucky	N	0	0	N	N	70	80	126	852	956	—	0	4	7	11
Mississippi	N	0	0	N	N	—	99	277	1,078	1,193	—	0	2	8	9
Tennessee	N	0	0	N	N	28	134	210	606	1,749	2	2	6	18	28
W.S. Central	3	6	15	49	57	645	960	1,152	8,092	10,920	—	3	11	36	38
Arkansas	2	2	7	19	11	101	72	108	848	886	—	0	3	9	3
Louisiana	1	4	11	30	46	1	143	268	139	1,346	—	1	6	11	12
Oklahoma	—	0	0	—	—	—	79	177	499	1,379	—	2	9	14	22
Texas	N	0	0	N	N	543	649	803	6,606	7,309	—	0	1	2	1
Mountain	2	19	44	133	187	55	286	402	3,177	2,643	1	6	14	56	85
Arizona	—	2	7	9	16	—	110	207	1,590	935	—	2	6	17	37
Colorado	—	6	23	51	51	33	55	90	618	633	—	1	6	11	23
Idaho	—	2	9	14	20	4	4	15	41	24	—	0	2	4	4
Montana	1	2	6	9	8	4	5	10	62	37	—	0	1	2	1
Nevada	—	1	6	5	15	—	49	85	347	533	—	0	1	2	4
New Mexico	—	1	6	8	25	—	36	79	272	346	—	1	3	9	10
Utah	1	4	9	35	39	14	21	31	230	127	1	1	2	11	5
Wyoming	—	0	6	2	13	—	1	5	17	8	—	0	1	—	1
Pacific	29	52	124	401	594	469	900	1,137	8,832	9,197	1	3	7	38	49
Alaska	—	1	7	6	6	11	22	39	249	195	—	0	3	4	3
California	22	31	102	314	463	331	748	950	7,278	7,512	1	1	2	9	11
Hawaii	—	1	4	3	13	4	13	21	125	188	—	0	2	6	6
Oregon	3	6	17	54	65	44	33	59	438	366	—	1	5	18	27
Washington	4	10	74	24	47	79	79	121	742	936	—	0	2	1	2
Territories															
American Samoa	—	—	—	—	—	—	—	—	—	—	—	—	—	—	—
C.N.M.I.	—	—	—	—	—	—	—	—	—	—	—	—	—	—	—
Guam	—	0	0	—	—	—	0	0	—	—	—	0	0	—	—
Puerto Rico	—	0	4	—	8	—	6	21	66	74	—	0	0	—	—
U.S. Virgin Islands	—	0	0	—	—	—	1	5	11	11	—	0	0	—	—

C.N.M.I.: Commonwealth of Northern Mariana Islands.

U: Unavailable. —: No reported cases. N: Not reportable. NN: Not Nationally Notifiable. Cum: Cumulative year-to-date counts. Med: Median. Max: Maximum.

* Case counts for reporting year 2013 and 2014 are provisional and subject to change. For further information on interpretation of these data, see <http://www.cdc.gov/nndss/document/ProvisionalNationalNotifiableDiseasesSurveillanceData20100927.pdf>. Data for TB are displayed in Table IV, which appears quarterly.

† Data for *H. influenzae* (age <5 yrs for serotype b, nonserotype b, and unknown serotype) are available in Table I.

Morbidity and Mortality Weekly Report

TABLE II. (Continued) Provisional cases of selected notifiable diseases, United States, weeks ending March 15, 2014, and March 16, 2013 (11th week)* (Export data)

Reporting area	Hepatitis (viral, acute), by type														
	A					B					C				
	Current week	Previous 52 weeks		Cum 2014	Cum 2013	Current week	Previous 52 weeks		Cum 2014	Cum 2013	Current week	Previous 52 weeks		Cum 2014	Cum 2013
	Med	Max				Med	Max				Med	Max			
United States	8	29	56	174	285	22	55	76	419	570	13	34	56	243	350
New England	—	2	6	16	17	—	1	5	8	17	—	3	8	17	41
Connecticut	—	0	3	6	3	—	0	2	3	—	—	0	1	1	—
Maine	—	0	2	—	3	—	0	1	1	4	—	0	2	5	2
Massachusetts	—	0	3	5	10	—	1	5	3	13	—	3	7	11	38
New Hampshire	—	0	1	1	—	—	0	2	—	—	N	0	0	N	N
Rhode Island	—	0	1	2	—	U	0	0	U	U	U	0	0	U	U
Vermont	—	0	2	2	1	—	0	1	1	—	—	0	1	—	1
Mid. Atlantic	1	3	12	24	39	2	4	10	34	48	—	4	11	34	46
New Jersey	—	0	2	2	6	—	0	3	1	13	—	0	3	2	9
New York (Upstate)	1	1	5	3	9	—	1	3	6	7	—	2	10	14	18
New York City	—	1	7	13	12	2	1	4	12	15	—	0	1	2	1
Pennsylvania	—	1	3	6	12	—	1	4	15	13	—	1	6	16	18
E.N. Central	—	5	12	21	66	2	9	15	89	91	—	7	30	57	52
Illinois	—	1	5	6	11	—	1	6	6	22	—	0	4	2	9
Indiana	—	0	2	1	4	—	2	6	15	17	—	3	8	6	14
Michigan	—	1	5	8	28	—	1	3	9	15	—	1	5	10	14
Ohio	—	1	4	6	18	2	4	11	56	34	—	1	24	35	7
Wisconsin	—	0	3	—	5	—	0	2	3	3	—	1	3	4	8
W.N. Central	—	1	6	10	11	—	2	5	9	19	—	0	5	6	9
Iowa	—	0	3	1	1	—	0	2	—	3	—	0	0	—	—
Kansas	—	0	3	2	1	—	0	1	1	5	—	0	3	4	5
Minnesota	—	0	0	—	—	—	0	0	—	—	—	0	0	—	—
Missouri	—	0	2	5	2	—	1	4	6	11	—	0	4	2	4
Nebraska	—	0	2	1	5	—	0	2	2	—	—	0	1	—	—
North Dakota	—	0	2	1	2	—	0	0	—	—	—	0	1	—	—
South Dakota	—	0	1	—	—	—	0	1	—	—	—	0	1	—	—
S. Atlantic	4	5	15	41	59	8	17	26	146	167	5	6	21	40	70
Delaware	—	0	1	—	1	—	0	1	—	3	U	0	0	U	U
District of Columbia	—	0	0	—	—	—	0	0	—	—	—	0	0	—	—
Florida	3	2	7	21	8	4	6	13	58	57	4	2	7	13	22
Georgia	—	1	3	8	16	—	2	6	22	28	—	0	3	1	10
Maryland	—	0	4	1	4	—	1	3	4	11	1	0	3	4	16
North Carolina	—	0	4	3	16	2	0	16	14	11	—	1	15	15	6
South Carolina	—	0	1	1	2	—	1	5	4	7	—	0	0	—	—
Virginia	1	0	3	6	11	2	1	5	7	15	—	0	5	5	4
West Virginia	—	0	1	1	1	—	4	8	37	35	—	0	6	2	12
E.S. Central	—	1	4	9	15	4	12	17	83	124	3	6	14	52	80
Alabama	—	0	2	2	—	—	1	5	17	19	—	0	5	3	2
Kentucky	—	0	2	2	9	—	4	8	19	32	1	4	10	34	57
Mississippi	—	0	1	2	1	—	0	4	3	13	U	0	0	U	U
Tennessee	—	0	2	3	5	4	5	11	44	60	2	2	7	15	21
W.S. Central	2	3	9	19	18	4	5	13	24	48	1	2	9	9	15
Arkansas	—	0	2	—	—	—	0	3	3	12	1	0	5	2	2
Louisiana	—	0	1	1	5	—	1	8	6	10	—	0	2	1	4
Oklahoma	—	0	4	1	—	—	0	4	2	3	—	0	5	6	3
Texas	2	2	8	17	13	4	2	10	13	23	—	0	4	—	6
Mountain	—	2	16	7	17	—	1	4	7	18	—	1	5	5	11
Arizona	—	1	6	3	7	—	0	2	3	7	U	0	0	U	U
Colorado	—	0	8	1	5	—	0	3	—	3	—	0	2	3	2
Idaho	—	0	2	—	2	—	0	2	—	2	—	0	1	1	3
Montana	—	0	1	—	—	—	0	1	—	—	—	0	2	—	1
Nevada	—	0	3	1	1	—	0	3	3	4	—	0	2	1	2
New Mexico	—	0	2	1	1	—	0	1	—	1	—	0	1	—	1
Utah	—	0	2	1	1	—	0	1	1	1	—	0	1	—	2
Wyoming	—	0	0	—	—	—	0	0	—	—	—	0	0	—	—
Pacific	1	6	18	27	43	2	3	12	19	38	4	3	8	23	26
Alaska	—	0	0	—	1	—	0	0	—	1	—	0	0	—	—
California	—	4	17	22	31	—	2	6	9	27	—	1	5	4	19
Hawaii	—	0	4	—	2	—	0	1	1	2	—	0	0	—	—
Oregon	—	0	3	3	5	—	0	4	5	8	—	0	2	4	2
Washington	1	0	5	2	4	2	0	9	4	—	4	1	7	15	5
Territories															
American Samoa	—	—	—	—	—	—	—	—	—	—	—	—	—	—	—
C.N.M.I.	—	—	—	—	—	—	—	—	—	—	—	—	—	—	—
Guam	—	0	0	—	—	—	0	0	—	—	—	0	0	—	—
Puerto Rico	—	0	2	1	3	—	0	6	—	10	N	0	0	N	N
U.S. Virgin Islands	—	0	0	—	—	—	0	0	—	—	—	0	0	—	—

C.N.M.I.: Commonwealth of Northern Mariana Islands.

U: Unavailable. —: No reported cases. N: Not reportable. NN: Not Nationally Notifiable. Cum: Cumulative year-to-date counts. Med: Median. Max: Maximum.

* Case counts for reporting year 2013 and 2014 are provisional and subject to change. For further information on interpretation of these data, see <http://www.cdc.gov/nndss/document/ProvisionalNationalNotifiableDiseasesSurveillanceData20100927.pdf>. Data for TB are displayed in Table IV, which appears quarterly.

Morbidity and Mortality Weekly Report

TABLE II. (Continued) Provisional cases of selected notifiable diseases, United States, weeks ending March 15, 2014, and March 16, 2013 (11th week)* (Export data)

Reporting area	Invasive Pneumococcal disease†										Legionellosis				
	All ages					Age <5									
	Current week	Previous 52 weeks		Cum 2014	Cum 2013	Current week	Previous 52 weeks		Cum 2014	Cum 2013	Current week	Previous 52 weeks		Cum 2014	Cum 2013
	Med	Max				Med	Max				Med	Max			
United States	213	285	635	3,560	5,137	21	19	48	198	280	38	75	273	422	571
New England	5	11	34	121	197	—	1	3	5	9	3	5	25	37	27
Connecticut	—	4	14	38	114	—	0	2	2	3	—	1	10	9	3
Maine	4	2	6	40	33	—	0	1	—	2	—	0	3	2	4
Massachusetts	—	0	2	3	4	—	0	2	1	3	3	3	20	21	14
New Hampshire	—	1	5	18	25	—	0	1	1	1	—	0	3	2	1
Rhode Island	1	1	18	8	—	—	0	1	1	—	—	0	10	2	3
Vermont	—	1	4	14	21	—	0	0	—	—	—	0	2	1	2
Mid. Atlantic	30	33	85	354	721	1	2	10	9	37	10	18	122	86	117
New Jersey	—	5	14	5	206	—	0	2	1	10	—	2	20	—	27
New York (Upstate)	13	18	66	190	280	1	1	6	6	17	6	7	40	33	25
New York City	17	11	25	159	235	—	0	4	2	10	2	3	47	20	23
Pennsylvania	N	—	—	N	N	N	0	0	N	N	2	6	26	33	42
E.N. Central	32	49	107	542	1,002	—	3	9	23	38	8	17	104	89	106
Illinois	N	0	0	N	N	—	1	3	4	10	—	4	32	14	17
Indiana	—	10	28	60	219	—	1	3	2	2	3	3	11	19	32
Michigan	1	12	28	129	226	—	1	4	8	13	—	3	21	6	10
Ohio	29	20	47	262	406	—	1	4	7	9	5	6	66	46	40
Wisconsin	2	8	16	91	151	—	0	3	2	4	—	2	12	4	7
W.N. Central	4	14	29	107	284	—	1	4	6	25	1	2	13	10	22
Iowa	N	0	0	N	N	N	0	0	N	N	—	0	2	—	1
Kansas	1	2	7	34	58	N	0	0	N	N	—	0	3	—	1
Minnesota	—	5	16	—	120	—	0	2	—	9	—	0	2	—	5
Missouri	N	0	0	N	N	—	0	3	1	10	1	1	11	5	8
Nebraska	—	2	8	36	43	—	0	2	4	3	—	0	3	1	6
North Dakota	—	1	5	11	30	—	0	1	1	3	—	0	1	2	—
South Dakota	3	2	5	26	33	N	0	0	N	N	—	0	1	2	1
S. Atlantic	49	60	126	918	1,166	4	5	14	52	74	4	13	44	92	85
Delaware	—	0	4	8	8	—	0	1	—	—	—	0	4	—	—
District of Columbia	—	1	7	17	18	—	0	1	—	—	N	0	0	N	N
Florida	32	18	45	352	368	4	1	5	19	26	4	4	16	43	36
Georgia	—	16	42	233	374	—	1	5	13	23	—	1	5	4	11
Maryland	14	8	26	131	142	—	0	4	9	8	—	2	14	16	11
North Carolina	—	0	0	—	—	N	0	0	N	N	—	1	9	12	14
South Carolina	3	7	27	138	137	—	0	2	7	4	—	0	3	5	3
Virginia	—	0	3	3	6	—	0	3	3	6	—	2	9	10	9
West Virginia	—	3	14	36	113	—	0	2	1	7	—	0	4	2	1
E.S. Central	21	26	59	389	453	5	2	5	25	21	3	3	13	21	20
Alabama	2	3	10	64	56	1	0	2	4	6	—	0	10	4	3
Kentucky	—	4	11	52	83	—	0	1	2	—	—	1	4	7	4
Mississippi	8	4	13	73	77	1	0	2	7	5	—	0	2	1	4
Tennessee	11	13	37	200	237	3	1	5	12	10	3	1	7	9	9
W.S. Central	48	36	291	527	574	9	3	18	47	37	2	3	23	27	33
Arkansas	1	3	30	39	65	—	0	2	—	1	—	0	3	4	2
Louisiana	6	5	21	114	88	1	0	2	8	6	—	0	3	3	8
Oklahoma	—	0	1	4	3	—	0	1	4	3	—	0	3	—	—
Texas	41	25	259	370	418	8	2	18	35	27	2	2	23	20	23
Mountain	21	35	80	563	697	2	2	7	26	31	1	3	9	12	36
Arizona	21	14	40	299	315	2	0	4	14	12	—	1	5	1	15
Colorado	—	9	24	124	156	—	0	2	4	7	—	0	7	—	6
Idaho	N	0	0	N	N	—	0	1	1	1	—	0	1	2	3
Montana	—	0	4	14	8	—	0	0	—	1	—	0	2	2	2
Nevada	—	2	7	27	42	—	0	1	—	1	—	0	3	1	2
New Mexico	—	5	13	75	113	—	0	2	4	5	—	0	2	—	4
Utah	—	3	11	19	56	—	0	2	2	4	1	0	3	6	4
Wyoming	—	0	2	5	7	—	0	1	1	—	—	0	0	—	—
Pacific	3	4	7	39	43	—	0	3	5	8	6	6	17	48	125
Alaska	1	2	6	15	25	—	0	2	2	6	—	0	1	1	—
California	N	0	0	N	N	N	0	0	N	N	5	5	16	42	112
Hawaii	2	2	5	24	18	—	0	2	3	2	1	0	1	1	1
Oregon	N	0	0	N	N	N	0	0	N	N	—	0	2	2	6
Washington	N	0	0	N	N	N	0	0	N	N	—	0	10	2	6
Territories															
American Samoa	N	—	—	N	N	—	—	—	—	—	N	—	—	N	N
C.N.M.I.	—	—	—	—	—	—	—	—	—	—	—	—	—	—	—
Guam	—	0	0	—	—	—	0	0	—	—	—	0	0	—	—
Puerto Rico	—	0	0	—	—	—	0	0	—	—	—	0	2	—	6
U.S. Virgin Islands	—	0	0	—	—	—	0	0	—	—	—	0	0	—	—

C.N.M.I.: Commonwealth of Northern Mariana Islands.

U: Unavailable. —: No reported cases. N: Not reportable. NN: Not Nationally Notifiable. Cum: Cumulative year-to-date counts. Med: Median. Max: Maximum.

* Case counts for reporting year 2013 and 2014 are provisional and subject to change. For further information on interpretation of these data, see <http://www.cdc.gov/nndss/document/ProvisionalNationalNotifiableDiseasesSurveillanceData20100927.pdf>. Data for TB are displayed in Table IV, which appears quarterly.

† Includes drug resistant and susceptible cases of Invasive Pneumococcal Disease. This condition was previously named Streptococcus pneumoniae invasive disease and cases were reported to CDC using different event codes to specify whether the cases were drug resistant or in a defined age group, such as <5 years. Since 2010, case notifications for this condition were consolidated under one event code for Invasive pneumococcal disease.

Morbidity and Mortality Weekly Report

TABLE II. (Continued) Provisional cases of selected notifiable diseases, United States, weeks ending March 15, 2014, and March 16, 2013 (11th week)* (Export data)

Reporting area	Lyme disease					Malaria					Meningococcal disease, invasive† All serogroups				
	Current week	Previous 52 weeks		Cum 2014	Cum 2013	Current week	Previous 52 weeks		Cum 2014	Cum 2013	Current week	Previous 52 weeks		Cum 2014	Cum 2013
		Med	Max				Med	Max				Med	Max		
United States	25	408	2,280	901	2,149	14	27	52	194	197	2	9	22	99	163
New England	—	130	927	149	603	—	2	8	10	9	—	0	3	2	7
Connecticut	—	31	251	14	237	—	0	2	—	—	—	0	1	—	2
Maine	—	15	99	34	41	—	0	2	2	—	—	0	1	—	1
Massachusetts	—	53	480	66	240	—	1	4	6	7	—	0	3	2	2
New Hampshire	—	5	91	—	56	—	0	2	1	2	—	0	1	—	1
Rhode Island	—	9	54	6	5	—	0	8	1	—	—	0	0	—	1
Vermont	—	8	97	29	24	—	0	3	—	—	—	0	1	—	—
Mid. Atlantic	21	189	1,006	586	1,073	2	8	21	52	39	—	1	7	4	14
New Jersey	—	41	224	96	443	—	1	5	4	9	—	0	2	1	3
New York (Upstate)	9	43	257	107	83	—	1	5	8	10	—	0	3	1	6
New York City	3	3	40	17	11	2	4	13	31	15	—	0	2	1	3
Pennsylvania	9	80	542	366	536	—	1	5	9	5	—	0	3	1	2
E.N. Central	—	20	231	31	64	1	3	8	15	22	1	1	4	7	20
Illinois	—	1	30	1	6	—	1	5	2	7	—	0	2	1	3
Indiana	—	0	13	—	2	—	0	2	2	3	—	0	1	—	5
Michigan	—	2	15	6	4	—	0	2	4	5	—	0	1	1	2
Ohio	—	1	7	3	7	1	0	3	7	6	1	0	2	4	3
Wisconsin	—	15	192	21	45	—	0	3	—	1	—	0	1	1	7
W.N. Central	—	3	31	3	4	1	0	3	13	9	—	0	3	5	12
Iowa	—	2	27	1	1	—	0	2	4	3	—	0	1	1	—
Kansas	—	0	4	—	2	1	0	1	3	2	—	0	1	1	1
Minnesota	—	0	0	—	—	—	0	0	—	—	—	0	2	—	3
Missouri	—	0	3	—	1	—	0	1	4	1	—	0	2	2	3
Nebraska	—	0	3	2	—	—	0	2	1	1	—	0	1	—	2
North Dakota	—	0	5	—	—	—	0	1	1	1	—	0	1	—	—
South Dakota	—	0	1	—	—	—	0	3	—	1	—	0	1	1	3
S. Atlantic	4	48	295	122	366	6	6	17	56	64	1	1	5	31	42
Delaware	—	6	23	27	63	—	0	2	1	—	—	0	1	1	—
District of Columbia	N	0	0	N	N	—	0	2	—	4	—	0	1	—	1
Florida	—	2	14	12	14	—	1	3	7	16	1	1	3	13	23
Georgia	—	0	2	—	7	—	1	5	7	10	—	0	2	3	4
Maryland	1	18	76	49	215	4	2	10	29	27	—	0	1	2	2
North Carolina	—	0	32	6	8	—	0	6	1	—	—	0	2	9	6
South Carolina	—	0	2	—	—	—	0	2	2	—	—	0	1	1	1
Virginia	2	17	258	22	51	2	1	6	9	7	—	0	1	2	3
West Virginia	1	1	19	6	8	—	0	1	—	—	—	0	0	—	2
E.S. Central	—	1	9	4	8	—	1	4	6	7	—	0	2	3	4
Alabama	—	0	3	—	3	—	0	1	—	1	—	0	1	—	—
Kentucky	—	0	9	2	4	—	0	1	2	3	—	0	1	1	1
Mississippi	—	0	0	—	—	—	0	1	—	—	—	0	1	—	2
Tennessee	—	0	3	2	1	—	0	3	4	3	—	0	1	2	1
W.S. Central	—	1	12	—	6	—	1	17	7	12	—	1	3	8	7
Arkansas	—	0	0	—	—	—	0	1	2	—	—	0	1	—	1
Louisiana	—	0	0	—	—	—	0	1	—	1	—	0	1	1	—
Oklahoma	—	0	1	—	—	—	0	3	—	—	—	0	2	2	—
Texas	—	1	12	—	6	—	1	17	5	11	—	0	3	5	6
Mountain	—	2	9	1	8	—	1	7	4	14	—	1	4	7	9
Arizona	—	0	3	—	2	—	0	3	4	6	—	0	3	3	4
Colorado	—	0	0	—	—	—	0	3	—	5	—	0	1	1	2
Idaho	—	0	2	1	5	—	0	1	—	—	—	0	1	—	—
Montana	—	0	3	—	1	—	0	0	—	—	—	0	1	1	—
Nevada	—	0	1	—	—	—	0	1	—	3	—	0	1	1	1
New Mexico	—	0	3	—	—	—	0	0	—	—	—	0	1	—	—
Utah	—	0	3	—	—	—	0	2	—	—	—	0	2	1	1
Wyoming	—	0	1	—	—	—	0	0	—	—	—	0	1	—	1
Pacific	—	3	11	5	17	4	3	10	31	21	—	2	7	32	48
Alaska	—	0	3	1	1	—	0	1	—	—	—	0	0	—	—
California	—	1	8	—	11	3	3	9	24	16	—	2	6	16	42
Hawaii	N	0	0	N	N	—	0	0	—	1	—	0	1	1	—
Oregon	—	1	3	4	5	—	0	1	—	—	—	0	3	10	3
Washington	—	0	4	—	—	1	0	3	7	4	—	0	5	5	3
Territories															
American Samoa	N	—	—	N	N	—	—	—	—	—	—	—	—	—	—
C.N.M.I.	—	—	—	—	—	—	—	—	—	—	—	—	—	—	—
Guam	—	0	0	—	—	—	0	0	—	—	—	0	0	—	—
Puerto Rico	N	0	0	N	N	—	0	0	—	—	—	0	1	1	—
U.S. Virgin Islands	N	0	0	N	N	—	0	0	—	—	—	0	0	—	—

C.N.M.I.: Commonwealth of Northern Mariana Islands.

U: Unavailable. —: No reported cases. N: Not reportable. NN: Not Nationally Notifiable. Cum: Cumulative year-to-date counts. Med: Median. Max: Maximum.

* Case counts for reporting year 2013 and 2014 are provisional and subject to change. For further information on interpretation of these data, see <http://www.cdc.gov/nndss/document/ProvisionalNationalNotifiableDiseasesSurveillanceData20100927.pdf>. Data for TB are displayed in Table IV, which appears quarterly.

† Data for meningococcal disease, invasive caused by serogroups A, C, Y, and W-135; serogroup B; other serogroup; and unknown serogroup are available in Table I.

Morbidity and Mortality Weekly Report

TABLE II. (Continued) Provisional cases of selected notifiable diseases, United States, weeks ending March 15, 2014, and March 16, 2013 (11th week)* (Export data)

Reporting area	Mumps					Pertussis					Rabies, animal				
	Current week	Previous 52 weeks		Cum 2014	Cum 2013	Current week	Previous 52 weeks		Cum 2014	Cum 2013	Current week	Previous 52 weeks		Cum 2014	Cum 2013
		Med	Max				Med	Max				Med	Max		
United States	20	7	54	92	72	139	525	912	3,668	4,563	18	64	133	242	482
New England	—	0	25	—	3	1	17	38	76	251	2	5	12	30	49
Connecticut	—	0	2	—	2	—	1	6	5	7	1	3	12	14	22
Maine	—	0	0	—	1	—	5	15	36	104	—	1	4	4	8
Massachusetts	—	0	25	—	—	—	5	22	15	50	—	0	0	—	—
New Hampshire	—	0	0	—	—	—	1	9	7	24	—	0	2	2	7
Rhode Island	—	0	1	—	—	1	2	18	10	7	—	0	4	3	3
Vermont	—	0	1	—	—	—	1	8	3	59	1	1	4	7	9
Mid. Atlantic	—	2	22	37	7	16	30	56	263	453	4	6	19	45	50
New Jersey	—	0	19	1	—	—	4	12	13	128	—	0	0	—	—
New York (Upstate)	—	0	2	2	—	11	13	40	138	156	4	6	19	45	50
New York City	—	1	22	34	4	—	2	10	2	25	—	0	0	—	—
Pennsylvania	—	0	5	—	3	5	12	20	110	144	—	0	0	—	—
E.N. Central	20	1	6	39	12	24	97	200	894	792	—	2	24	—	5
Illinois	—	0	4	7	6	—	13	35	82	131	—	0	6	—	3
Indiana	—	0	1	2	1	—	11	29	40	62	—	0	1	—	—
Michigan	—	0	1	2	1	1	20	44	169	113	—	0	5	—	1
Ohio	20	0	2	28	4	23	27	104	475	179	—	0	19	—	1
Wisconsin	—	0	1	—	—	—	21	54	128	307	N	0	0	N	N
W.N. Central	—	0	2	2	1	4	39	90	213	435	2	2	9	10	15
Iowa	—	0	1	1	—	—	4	12	23	102	—	0	0	—	—
Kansas	—	0	0	—	—	—	6	20	34	41	2	1	5	6	8
Minnesota	—	0	2	—	—	—	12	37	—	150	—	0	0	—	—
Missouri	—	0	2	1	1	4	9	33	91	95	—	0	3	1	6
Nebraska	—	0	0	—	—	—	5	14	47	34	—	0	0	—	—
North Dakota	—	0	1	—	—	—	1	7	1	3	—	0	0	—	—
South Dakota	—	0	0	—	—	—	1	8	17	10	—	0	4	3	1
S. Atlantic	—	0	37	4	26	27	49	92	532	410	3	16	31	62	243
Delaware	—	0	0	—	—	—	1	32	118	9	—	0	0	—	—
District of Columbia	—	0	1	—	—	—	0	4	4	11	—	0	0	—	—
Florida	—	0	1	—	—	16	14	63	162	80	—	0	7	19	103
Georgia	—	0	4	4	—	—	4	11	32	87	—	0	0	—	—
Maryland	—	0	26	—	16	3	3	10	23	46	—	7	17	38	44
North Carolina	—	0	1	—	—	5	12	29	128	78	—	0	0	—	—
South Carolina	—	0	1	—	—	—	4	8	11	42	—	0	0	—	—
Virginia	—	0	18	—	10	3	6	23	49	54	—	7	15	—	87
West Virginia	—	0	0	—	—	—	0	3	5	3	3	1	6	5	9
E.S. Central	—	0	3	2	4	1	16	36	176	175	—	1	4	7	8
Alabama	—	0	1	—	1	1	3	8	38	36	—	1	3	5	6
Kentucky	—	0	0	—	1	—	7	28	75	63	—	0	3	2	2
Mississippi	—	0	0	—	—	—	1	4	9	18	—	0	2	—	—
Tennessee	—	0	3	2	2	—	5	10	54	58	—	0	0	—	—
W.S. Central	—	0	3	3	4	38	87	375	387	308	7	18	78	88	96
Arkansas	—	0	1	—	1	—	9	29	52	65	5	1	34	21	17
Louisiana	—	0	1	—	1	—	3	11	12	7	—	0	0	—	—
Oklahoma	—	0	1	—	—	—	0	36	1	5	—	0	31	3	1
Texas	—	0	3	3	2	38	68	346	322	231	2	16	72	64	78
Mountain	—	0	2	3	3	14	106	180	699	1,179	—	1	9	—	—
Arizona	—	0	1	2	—	—	20	76	62	332	N	0	0	N	N
Colorado	—	0	1	1	1	—	27	63	297	283	—	0	0	—	—
Idaho	—	0	0	—	—	11	4	14	66	43	—	0	4	—	—
Montana	—	0	0	—	—	3	11	27	51	138	N	0	0	N	N
Nevada	—	0	2	—	1	—	2	12	24	26	—	0	3	—	—
New Mexico	—	0	1	—	—	—	9	23	47	143	—	0	1	—	—
Utah	—	0	1	—	1	—	24	41	152	213	—	0	4	—	—
Wyoming	—	0	0	—	—	—	1	12	—	1	—	0	0	—	—
Pacific	—	0	2	2	12	14	61	163	428	560	—	3	12	—	16
Alaska	—	0	1	—	—	—	4	16	6	132	—	0	2	—	2
California	—	0	2	2	11	5	38	67	331	223	—	3	11	—	12
Hawaii	—	0	1	—	—	—	1	4	3	3	—	0	0	—	—
Oregon	—	0	1	—	1	—	9	26	63	82	—	0	2	—	2
Washington	—	0	1	—	—	9	11	123	25	120	—	0	0	—	—
Territories	—	—	—	—	—	—	—	—	—	—	—	—	—	—	—
American Samoa	—	—	—	—	—	—	—	—	—	—	N	—	—	N	N
C.N.M.I.	—	—	—	—	—	—	—	—	—	—	—	—	—	—	—
Guam	—	0	0	—	—	—	0	0	—	—	—	0	0	—	—
Puerto Rico	—	0	1	—	2	—	0	6	4	1	—	0	4	5	—
U.S. Virgin Islands	—	0	0	—	—	—	0	0	—	—	—	0	0	—	—

C.N.M.I.: Commonwealth of Northern Mariana Islands.

U: Unavailable. —: No reported cases. N: Not reportable. NN: Not Nationally Notifiable. Cum: Cumulative year-to-date counts. Med: Median. Max: Maximum.

* Case counts for reporting year 2013 and 2014 are provisional and subject to change. For further information on interpretation of these data, see <http://www.cdc.gov/nndss/document/ProvisionalNationalNotifiableDiseasesSurveillanceData20100927.pdf>. Data for TB are displayed in Table IV, which appears quarterly.

Morbidity and Mortality Weekly Report

TABLE II. (Continued) Provisional cases of selected notifiable diseases, United States, weeks ending March 15, 2014, and March 16, 2013 (11th week)* (Export data)

Reporting area	Salmonellosis					Shiga toxin-producing <i>E. coli</i> (STEC) [†]					Shigellosis				
	Current week	Previous 52 weeks		Cum 2014	Cum 2013	Current week	Previous 52 weeks		Cum 2014	Cum 2013	Current week	Previous 52 weeks		Cum 2014	Cum 2013
		Med	Max				Med	Max				Med	Max		
United States	256	933	1,580	4,600	5,440	37	120	287	441	643	154	235	628	2,120	1,537
New England	1	39	78	211	209	—	4	13	16	27	—	4	94	39	31
Connecticut	—	7	21	44	53	—	1	7	5	7	—	1	5	7	7
Maine	1	2	11	13	14	—	0	4	—	2	—	0	1	2	—
Massachusetts	—	21	56	103	103	—	2	8	7	12	—	3	11	26	20
New Hampshire	—	4	11	21	18	—	0	2	2	4	—	0	1	2	2
Rhode Island	—	2	13	13	9	—	0	2	—	—	—	0	86	2	—
Vermont	—	1	6	17	12	—	0	3	2	2	—	0	1	—	2
Mid. Atlantic	39	97	197	413	579	8	13	36	47	75	14	15	32	128	177
New Jersey	—	18	46	11	130	—	2	8	5	16	—	2	7	18	20
New York (Upstate)	17	25	72	142	116	4	4	10	17	19	6	4	26	47	67
New York City	14	20	52	150	152	3	1	8	10	16	8	6	14	52	68
Pennsylvania	8	28	64	110	181	1	5	17	15	24	—	2	9	11	22
E.N. Central	12	101	171	417	721	3	15	46	43	118	5	21	39	138	400
Illinois	—	31	65	127	238	—	4	32	13	25	—	5	16	16	33
Indiana	—	14	27	24	83	—	2	7	2	19	—	2	8	8	9
Michigan	2	17	42	86	149	1	3	14	9	21	—	3	8	12	42
Ohio	10	23	42	164	135	2	3	15	18	22	5	9	23	93	305
Wisconsin	—	13	29	16	116	—	2	13	1	31	—	0	3	9	11
W.N. Central	10	46	93	205	307	2	10	38	33	72	4	9	74	281	43
Iowa	1	10	36	50	75	—	2	14	5	15	2	3	43	67	13
Kansas	—	7	18	34	45	—	1	6	4	10	—	1	4	7	6
Minnesota	—	0	0	—	—	—	0	0	—	—	—	0	0	—	—
Missouri	8	18	38	74	113	2	4	18	14	33	1	2	9	24	8
Nebraska	—	5	20	16	31	—	1	7	6	6	—	1	4	3	11
North Dakota	—	2	7	13	16	—	0	3	2	3	—	0	2	5	3
South Dakota	1	3	10	18	27	—	0	5	2	5	1	1	30	175	2
S. Atlantic	92	242	446	1,625	1,437	6	11	20	74	85	70	53	161	732	251
Delaware	—	2	8	8	11	—	0	2	—	—	—	0	2	7	2
District of Columbia	—	0	3	2	10	—	0	1	—	1	—	0	2	—	4
Florida	46	105	226	731	662	4	3	7	35	19	48	22	53	340	80
Georgia	—	34	102	195	214	—	2	10	12	18	—	16	36	127	91
Maryland	6	16	37	123	128	1	1	8	9	12	2	2	6	30	16
North Carolina	20	38	136	328	203	—	1	8	9	19	17	3	119	191	24
South Carolina	8	20	52	112	113	—	0	1	1	2	—	3	6	16	21
Virginia	12	19	41	113	75	1	2	7	7	7	3	2	8	21	12
West Virginia	—	3	9	13	21	—	0	3	1	7	—	0	2	—	1
E.S. Central	19	58	148	342	329	1	5	18	23	38	15	22	66	253	102
Alabama	4	18	79	118	103	—	0	3	3	11	2	5	14	53	39
Kentucky	2	9	21	65	68	—	2	9	10	9	—	1	6	10	14
Mississippi	12	13	41	75	75	—	0	4	1	6	5	4	13	33	32
Tennessee	1	15	36	84	83	1	2	6	9	12	8	10	50	157	17
W.S. Central	40	126	538	441	566	13	14	39	121	61	27	50	410	289	288
Arkansas	2	13	35	39	46	2	2	6	15	5	11	5	22	57	20
Louisiana	—	19	43	72	127	—	0	2	1	3	—	5	21	28	32
Oklahoma	—	12	49	54	59	—	1	10	4	4	—	2	13	9	36
Texas	38	73	522	276	334	11	10	35	101	49	16	32	383	195	200
Mountain	4	56	279	257	328	—	10	66	25	58	4	13	41	76	65
Arizona	1	19	35	78	119	—	2	44	4	13	4	7	29	41	35
Colorado	—	12	35	67	61	—	3	11	2	20	—	1	12	11	7
Idaho	2	2	9	17	12	—	2	6	8	8	—	0	3	3	—
Montana	1	2	9	19	14	—	1	5	2	2	—	1	10	3	—
Nevada	—	4	205	12	36	—	1	8	2	6	—	0	7	5	11
New Mexico	—	6	14	25	44	—	0	3	5	—	—	1	5	3	7
Utah	—	6	14	37	36	—	1	9	2	9	—	0	2	8	4
Wyoming	—	1	4	2	6	—	0	7	—	—	—	0	2	2	1
Pacific	39	118	220	689	964	4	20	95	59	109	15	22	49	184	180
Alaska	—	2	6	15	4	—	0	0	—	—	—	0	1	2	—
California	28	85	174	537	813	2	13	39	40	74	5	18	49	145	137
Hawaii	3	7	13	51	38	—	0	2	3	10	—	0	2	4	19
Oregon	1	6	25	38	46	1	3	14	8	12	—	1	4	8	13
Washington	7	10	82	48	63	1	3	80	8	13	10	1	17	25	11
Territories															
American Samoa	—	—	—	—	—	—	—	—	—	—	—	—	—	—	—
C.N.M.I.	—	—	—	—	—	—	—	—	—	—	—	—	—	—	—
Guam	—	0	0	—	—	—	0	0	—	—	—	0	0	—	—
Puerto Rico	1	6	43	19	80	—	0	6	2	—	—	0	1	—	—
U.S. Virgin Islands	—	0	0	—	—	—	0	0	—	—	—	0	0	—	—

C.N.M.I.: Commonwealth of Northern Mariana Islands.

U: Unavailable. —: No reported cases. N: Not reportable. NN: Not Nationally Notifiable. Cum: Cumulative year-to-date counts. Med: Median. Max: Maximum.

* Case counts for reporting year 2013 and 2014 are provisional and subject to change. For further information on interpretation of these data, see <http://www.cdc.gov/nndss/document/ProvisionalNationalNotifiableDiseasesSurveillanceData20100927.pdf>. Data for TB are displayed in Table IV, which appears quarterly.

† Includes *E. coli* O157:H7; Shiga toxin-positive, serogroup non-O157; and Shiga toxin-positive, not serogrouped.

Morbidity and Mortality Weekly Report

TABLE II. (Continued) Provisional cases of selected notifiable diseases, United States, weeks ending March 15, 2014, and March 16, 2013 (11th week)* (Export data)

Reporting area	Spotted Fever Rickettsiosis (including RMSF)†										Syphilis, primary and secondary				
	Confirmed					Probable									
	Current week	Previous 52 weeks		Cum 2014	Cum 2013	Current week	Previous 52 weeks		Cum 2014	Cum 2013	Current week	Previous 52 weeks		Cum 2014	Cum 2013
	Med	Max				Med	Max				Med	Max			
United States	1	2	10	13	21	1	39	184	72	100	121	328	473	2,660	3,352
New England	—	0	1	—	—	—	0	2	1	1	4	9	19	77	110
Connecticut	—	0	0	—	—	—	0	0	—	—	—	1	6	11	20
Maine	—	0	0	—	—	—	0	1	—	—	—	0	4	6	2
Massachusetts	—	0	0	—	—	—	0	1	—	—	—	6	18	44	71
New Hampshire	—	0	1	—	—	—	0	1	1	1	—	0	2	5	8
Rhode Island	—	0	0	—	—	—	0	2	—	—	4	0	5	11	7
Vermont	—	0	0	—	—	—	0	0	—	—	—	0	1	—	2
Mid. Atlantic	1	0	1	2	2	—	1	6	2	12	12	39	69	340	445
New Jersey	—	0	1	—	1	—	0	4	1	9	—	4	9	34	48
New York (Upstate)	1	0	1	2	—	—	0	6	1	—	8	5	47	54	47
New York City	—	0	1	—	—	—	0	1	—	1	—	22	35	184	246
Pennsylvania	—	0	1	—	1	—	0	3	—	2	4	8	15	68	104
E.N. Central	—	0	2	—	—	—	2	14	4	8	—	36	58	199	391
Illinois	—	0	1	—	—	—	1	8	—	2	—	11	29	55	172
Indiana	—	0	1	—	—	—	0	4	—	4	—	4	10	25	38
Michigan	—	0	1	—	—	—	0	1	—	—	—	9	17	35	84
Ohio	—	0	1	—	—	—	0	2	4	1	—	8	14	69	82
Wisconsin	—	0	1	—	—	—	0	2	—	1	—	1	5	15	15
W.N. Central	—	0	1	—	—	—	4	26	5	6	—	13	27	118	125
Iowa	—	0	0	—	—	—	0	2	—	1	—	1	6	6	17
Kansas	—	0	0	—	—	—	0	0	—	—	—	1	4	7	7
Minnesota	—	0	0	—	—	—	0	0	—	—	—	3	10	42	35
Missouri	—	0	1	—	—	—	4	25	5	5	—	5	10	43	47
Nebraska	—	0	1	—	—	—	0	2	—	—	—	1	3	11	13
North Dakota	—	0	0	—	—	—	0	1	—	—	—	0	1	1	2
South Dakota	—	0	1	—	—	—	0	1	—	—	—	0	5	8	4
S. Atlantic	—	2	7	10	18	—	12	69	24	31	57	78	181	758	659
Delaware	—	0	0	—	—	—	0	2	2	2	1	0	9	6	5
District of Columbia	—	0	1	—	—	—	0	0	—	—	—	2	8	—	51
Florida	—	0	2	1	—	—	0	4	3	1	2	27	49	287	299
Georgia	—	1	7	9	17	—	0	0	—	—	29	16	119	185	99
Maryland	—	0	0	—	—	—	0	3	1	—	3	9	16	86	76
North Carolina	—	0	2	—	—	—	2	47	5	6	12	8	29	89	8
South Carolina	—	0	1	—	1	—	1	3	3	8	6	5	13	50	55
Virginia	—	0	2	—	—	—	4	21	9	14	4	6	18	54	62
West Virginia	—	0	1	—	—	—	0	2	1	—	—	0	2	1	4
E.S. Central	—	0	3	—	—	—	11	49	18	18	2	11	29	104	105
Alabama	—	0	1	—	—	—	3	17	9	4	—	4	8	26	26
Kentucky	—	0	1	—	—	—	1	6	3	3	2	2	8	24	21
Mississippi	—	0	1	—	—	—	0	4	—	—	—	1	26	39	14
Tennessee	—	0	2	—	—	—	7	30	6	11	—	4	8	15	44
W.S. Central	—	0	4	—	—	1	8	104	15	13	24	39	67	322	471
Arkansas	—	0	2	—	—	—	5	28	7	7	5	3	10	26	35
Louisiana	—	0	0	—	—	—	0	1	—	—	1	7	20	34	66
Oklahoma	—	0	4	—	—	—	0	88	—	3	1	2	9	20	21
Texas	—	0	1	—	—	1	1	16	8	3	17	27	41	242	349
Mountain	—	0	1	—	1	—	1	4	2	9	1	15	26	140	155
Arizona	—	0	1	—	1	—	1	3	2	9	—	5	12	34	53
Colorado	—	0	0	—	—	—	0	1	—	—	—	3	9	29	38
Idaho	—	0	1	—	—	—	0	0	—	—	—	0	2	2	2
Montana	—	0	0	—	—	—	0	1	—	—	—	0	1	—	2
Nevada	—	0	0	—	—	—	0	1	—	—	—	4	14	54	29
New Mexico	—	0	1	—	—	—	0	1	—	—	—	1	5	15	17
Utah	—	0	0	—	—	—	0	1	—	—	1	1	5	6	13
Wyoming	—	0	0	—	—	—	0	1	—	—	—	0	0	—	1
Pacific	—	0	1	1	—	—	0	2	1	2	21	80	111	602	891
Alaska	N	0	0	N	N	N	0	0	N	N	—	0	3	4	4
California	—	0	1	1	—	—	0	2	1	2	15	68	90	511	753
Hawaii	N	0	0	N	N	N	0	0	N	N	—	1	3	12	4
Oregon	—	0	1	—	—	—	0	1	—	—	1	5	9	40	77
Washington	—	0	0	—	—	—	0	0	—	—	5	5	14	35	53
Territories															
American Samoa	N	—	—	N	N	N	—	—	N	N	—	—	—	—	—
C.N.M.I.	—	—	—	—	—	—	—	—	—	—	—	—	—	—	—
Guam	N	0	0	N	N	N	0	0	N	N	—	0	0	—	—
Puerto Rico	N	0	0	N	N	N	0	0	N	N	—	6	30	48	77
U.S. Virgin Islands	N	0	0	N	N	N	0	0	N	N	—	0	1	—	—

C.N.M.I.: Commonwealth of Northern Mariana Islands.

U: Unavailable. —: No reported cases. N: Not reportable. NN: Not Nationally Notifiable. Cum: Cumulative year-to-date counts. Med: Median. Max: Maximum.

* Case counts for reporting year 2013 and 2014 are provisional and subject to change. For further information on interpretation of these data, see <http://www.cdc.gov/nndss/document/ProvisionalNationalNotifiableDiseasesSurveillanceData20100927.pdf>. Data for TB are displayed in Table IV, which appears quarterly.

† Illnesses with similar clinical presentation that result from Spotted fever group rickettsia infections are reported as Spotted fever rickettsioses. Rocky Mountain spotted fever (RMSF) caused by *Rickettsia rickettsii*, is the most common and well-known spotted fever.

Morbidity and Mortality Weekly Report

TABLE II. (Continued) Provisional cases of selected notifiable diseases, United States, weeks ending March 15, 2014, and March 16, 2013 (11th week)* (Export data)

Reporting area	West Nile virus disease [†]														
	Varicella (chickenpox)					Neuroinvasive					Nonneuroinvasive [‡]				
	Current week	Previous 52 weeks		Cum 2014	Cum 2013	Current week	Previous 52 weeks		Cum 2014	Cum 2013	Current week	Previous 52 weeks		Cum 2014	Cum 2013
	Med	Max				Med	Max				Med	Max			
United States	68	209	296	1,336	2,227	—	1	165	1	1	—	1	163	—	1
New England	1	20	47	129	189	—	0	3	—	—	—	0	2	—	—
Connecticut	—	4	9	30	54	—	0	1	—	—	—	0	1	—	—
Maine	1	3	7	35	32	—	0	0	—	—	—	0	0	—	—
Massachusetts	—	9	20	55	82	—	0	2	—	—	—	0	1	—	—
New Hampshire	—	2	8	—	11	—	0	1	—	—	—	0	0	—	—
Rhode Island	—	0	5	2	3	—	0	1	—	—	—	0	0	—	—
Vermont	—	1	27	7	7	—	0	1	—	—	—	0	1	—	—
Mid. Atlantic	18	18	39	157	266	—	0	7	—	—	—	0	6	—	—
New Jersey	—	3	21	11	100	—	0	4	—	—	—	0	2	—	—
New York (Upstate)	N	0	0	N	N	—	0	2	—	—	—	0	4	—	—
New York City	—	0	0	—	—	—	0	2	—	—	—	0	1	—	—
Pennsylvania	18	15	26	146	166	—	0	1	—	—	—	0	1	—	—
E.N. Central	20	61	105	399	676	—	0	26	—	—	—	0	14	—	—
Illinois	—	12	32	96	176	—	0	21	—	—	—	0	8	—	—
Indiana	—	5	14	48	66	—	0	6	—	—	—	0	1	—	—
Michigan	4	19	44	70	185	—	0	5	—	—	—	0	4	—	—
Ohio	12	11	26	112	171	—	0	3	—	—	—	0	2	—	—
Wisconsin	4	7	25	73	78	—	0	3	—	—	—	0	1	—	—
W.N. Central	—	5	16	28	79	—	0	51	—	—	—	0	68	—	—
Iowa	N	0	0	N	N	—	0	10	—	—	—	0	5	—	—
Kansas	—	0	0	—	—	—	0	8	—	—	—	0	16	—	—
Minnesota	—	0	0	—	—	—	0	7	—	—	—	0	8	—	—
Missouri	—	3	14	14	60	—	0	5	—	—	—	0	1	—	—
Nebraska	—	0	2	1	—	—	0	14	—	—	—	0	29	—	—
North Dakota	—	0	4	5	9	—	0	12	—	—	—	0	9	—	—
South Dakota	—	1	4	8	10	—	0	10	—	—	—	0	12	—	—
S. Atlantic	—	25	49	181	303	—	0	9	—	—	—	0	3	—	1
Delaware	—	0	2	—	8	—	0	1	—	—	—	0	0	—	—
District of Columbia	—	0	2	—	5	—	0	0	—	—	—	0	1	—	—
Florida	—	12	26	101	171	—	0	1	—	—	—	0	1	—	—
Georgia	—	0	5	1	17	—	0	2	—	—	—	0	1	—	—
Maryland	N	0	0	N	N	—	0	3	—	—	—	0	2	—	—
North Carolina	—	0	0	—	—	—	0	2	—	—	—	0	0	—	—
South Carolina	—	3	13	18	20	—	0	1	—	—	—	0	1	—	1
Virginia	—	7	17	35	63	—	0	2	—	—	—	0	0	—	—
West Virginia	—	2	8	26	19	—	0	1	—	—	—	0	0	—	—
E.S. Central	—	3	9	24	42	—	0	7	1	—	—	0	7	—	—
Alabama	—	3	8	24	41	—	0	1	—	—	—	0	3	—	—
Kentucky	N	0	0	N	N	—	0	1	—	—	—	0	1	—	—
Mississippi	—	0	1	—	1	—	0	5	1	—	—	0	3	—	—
Tennessee	N	0	0	N	N	—	0	3	—	—	—	0	2	—	—
W.S. Central	16	35	115	199	385	—	0	29	—	—	—	0	17	—	—
Arkansas	—	3	17	10	39	—	0	3	—	—	—	0	1	—	—
Louisiana	—	1	7	4	11	—	0	7	—	—	—	0	3	—	—
Oklahoma	N	0	0	N	N	—	0	9	—	—	—	0	7	—	—
Texas	16	29	106	185	335	—	0	16	—	—	—	0	12	—	—
Mountain	12	20	43	205	270	—	0	31	—	—	—	0	53	—	—
Arizona	—	5	19	45	90	—	0	7	—	—	—	0	2	—	—
Colorado	11	6	23	67	78	—	0	17	—	—	—	0	34	—	—
Idaho	N	0	0	N	N	—	0	5	—	—	—	0	7	—	—
Montana	—	1	6	17	20	—	0	5	—	—	—	0	7	—	—
Nevada	N	0	0	N	N	—	0	4	—	—	—	0	1	—	—
New Mexico	—	1	5	21	17	—	0	4	—	—	—	0	3	—	—
Utah	1	4	11	55	63	—	0	1	—	—	—	0	1	—	—
Wyoming	—	0	2	—	2	—	0	4	—	—	—	0	6	—	—
Pacific	1	2	6	14	17	—	0	27	—	1	—	0	18	—	—
Alaska	1	1	6	7	11	—	0	0	—	—	—	0	0	—	—
California	—	0	2	2	3	—	0	27	—	1	—	0	18	—	—
Hawaii	—	1	4	5	3	—	0	0	—	—	—	0	0	—	—
Oregon	N	0	0	N	N	—	0	2	—	—	—	0	3	—	—
Washington	N	0	0	N	N	—	0	0	—	—	—	0	1	—	—
Territories															
American Samoa	N	—	—	N	N	—	—	—	—	—	—	—	—	—	—
C.N.M.I.	—	—	—	—	—	—	—	—	—	—	—	—	—	—	—
Guam	—	0	0	—	—	—	0	0	—	—	—	0	0	—	—
Puerto Rico	—	4	14	26	44	—	0	0	—	—	—	0	0	—	—
U.S. Virgin Islands	—	0	0	—	—	—	0	0	—	—	—	0	0	—	—

C.N.M.I.: Commonwealth of Northern Mariana Islands.

U: Unavailable. —: No reported cases. N: Not reportable. NN: Not Nationally Notifiable. Cum: Cumulative year-to-date counts. Med: Median. Max: Maximum.

* Case counts for reporting year 2013 and 2014 are provisional and subject to change. For further information on interpretation of these data, see <http://www.cdc.gov/nndss/document/ProvisionalNationalNotifiableDiseasesSurveillanceData20100927.pdf>. Data for TB are displayed in Table IV, which appears quarterly.

[†] Updated weekly from reports to the Division of Vector-Borne Infectious Diseases, National Center for Zoonotic, Vector-Borne, and Enteric Diseases (ArboNET Surveillance). Data for California serogroup, eastern equine, Powassan, St. Louis, and western equine diseases are available in Table I.

[‡] Not reportable in all states. Data from states where the condition is not reportable are excluded from this table, except starting in 2007 for the domestic arboviral diseases and influenza-associated pediatric mortality, and in 2003 for SARS-CoV. Reporting exceptions are available at http://www.cdc.gov/nndss/document/SRCA_FINAL_REPORT_2006-2012_final.xlsx.

Morbidity and Mortality Weekly Report

TABLE III. Deaths in 122 U.S. cities,* week ending March 15, 2014 (11th week)

Reporting area	All causes, by age (years)						P&I†	Total	Reporting area (Continued)	All causes, by age (years)						P&I†	Total
	All Ages	≥65	45-64	25-44	1-24	<1				All Ages	≥65	45-64	25-44	1-24	<1		
New England	620	428	142	30	7	13	56	S. Atlantic	972	642	236	56	15	23	62		
Boston, MA	191	120	49	13	3	6	19	Atlanta, GA	117	69	35	9	1	3	9		
Bridgeport, CT	40	30	6	2	2	—	2	Baltimore, MD	U	U	U	U	U	U			
Cambridge, MA	8	8	—	—	—	—	1	Charlotte, NC	134	90	29	12	—	3	8		
Fall River, MA	24	16	5	1	—	2	1	Jacksonville, FL	179	119	45	7	5	3	6		
Hartford, CT	50	34	13	2	—	1	3	Miami, FL	72	57	11	2	1	1	2		
Lowell, MA	19	16	2	1	—	—	1	Norfolk, VA	54	28	19	5	1	1	4		
Lynn, MA	14	9	5	—	—	—	2	Richmond, VA	65	32	21	5	2	5	4		
New Bedford, MA	33	28	4	1	—	—	3	Savannah, GA	52	35	12	4	1	—	4		
New Haven, CT	32	23	6	1	—	2	4	St. Petersburg, FL	66	53	11	1	—	1	6		
Providence, RI	75	54	18	3	—	—	3	Tampa, FL	115	82	22	7	1	3	13		
Somerville, MA	1	1	—	—	—	—	—	Washington, D.C.	99	62	28	3	3	3	6		
Springfield, MA	43	30	9	3	1	—	5	Wilmington, DE	19	15	3	1	—	—	—		
Waterbury, CT	24	14	9	—	—	1	2	E.S. Central	1,047	670	268	67	17	25	84		
Worcester, MA	66	45	16	3	1	1	10	Birmingham, AL	181	112	48	8	2	11	17		
Mid. Atlantic	1,605	1,149	328	97	21	10	82	Chattanooga, TN	123	81	30	8	2	2	8		
Albany, NY	50	37	11	1	—	1	2	Knoxville, TN	165	103	46	12	1	3	20		
Allentown, PA	39	33	5	1	—	—	—	Lexington, KY	97	67	20	8	—	2	3		
Buffalo, NY	99	64	27	8	—	—	4	Memphis, TN	167	109	38	12	7	1	18		
Camden, NJ	30	15	13	1	—	1	2	Mobile, AL	110	74	28	3	2	3	4		
Elizabeth, NJ	20	10	6	3	1	—	2	Montgomery, AL	36	23	7	5	—	1	5		
Erie, PA	52	38	9	1	3	1	3	Nashville, TN	168	101	51	11	3	2	9		
Jersey City, NJ	18	13	3	2	—	—	—	W.S. Central	1,546	1,021	353	103	33	36	93		
New York City, NY	914	660	175	59	14	6	44	Austin, TX	103	67	22	8	3	3	5		
Newark, NJ	U	U	U	U	U	U	U	Baton Rouge, LA	130	81	32	10	4	3	5		
Paterson, NJ	U	U	U	U	U	U	U	Corpus Christi, TX	40	31	6	3	—	—	3		
Philadelphia, PA	U	U	U	U	U	U	U	Dallas, TX	210	134	46	17	5	8	22		
Pittsburgh, PA [§]	49	41	7	1	—	—	2	El Paso, TX	118	87	24	5	1	1	1		
Reading, PA	32	25	5	1	1	—	2	Fort Worth, TX	U	U	U	U	U	U	U		
Rochester, NY	122	84	31	6	1	—	8	Houston, TX	345	236	68	21	6	14	26		
Schenectady, NY	20	13	5	2	—	—	1	Little Rock, AR	93	60	21	7	3	2	3		
Scranton, PA	42	31	7	3	1	—	3	New Orleans, LA	74	42	23	6	3	—	—		
Syracuse, NY	65	50	10	5	—	—	7	San Antonio, TX	306	193	88	16	6	3	18		
Trenton, NJ	22	14	7	1	—	—	1	Shreveport, LA	72	46	15	8	2	1	7		
Utica, NY	14	9	3	1	—	1	1	Tulsa, OK	55	44	8	2	—	1	3		
Yonkers, NY	17	12	4	1	—	—	—	Mountain	1,238	836	294	61	27	20	88		
E.N. Central	2,090	1,409	484	118	46	33	147	Albuquerque, NM	149	101	29	11	4	4	17		
Akron, OH	48	31	14	2	—	1	3	Boise, ID	69	49	17	3	—	—	4		
Canton, OH	39	32	4	1	2	—	6	Colorado Springs, CO	81	59	19	2	—	1	3		
Chicago, IL	261	178	58	12	10	3	17	Denver, CO	103	69	27	6	—	1	4		
Cincinnati, OH	80	46	22	6	3	3	7	Las Vegas, NV	312	201	90	13	4	4	22		
Cleveland, OH	245	175	51	15	2	2	13	Ogden, UT	32	21	9	—	1	1	4		
Columbus, OH	295	205	65	15	4	6	22	Phoenix, AZ	147	88	38	8	7	6	13		
Dayton, OH	161	106	39	13	—	3	15	Pueblo, CO	29	22	5	1	1	—	—		
Detroit, MI	91	58	19	7	4	3	7	Salt Lake City, UT	131	90	29	7	3	2	12		
Evansville, IN	54	43	10	1	—	—	5	Tucson, AZ	185	136	31	10	7	1	9		
Fort Wayne, IN	66	47	17	2	—	—	2	Pacific	1,703	1,195	354	94	31	29	146		
Gary, IN	10	5	5	—	—	—	—	Berkeley, CA	13	9	2	1	1	—	1		
Grand Rapids, MI	64	40	17	4	1	2	2	Fresno, CA	133	90	28	9	4	2	9		
Indianapolis, IN	215	129	59	17	5	5	18	Glendale, CA	30	22	7	1	—	—	8		
Lansing, MI	54	35	16	1	2	—	3	Honolulu, HI	83	68	12	3	—	—	7		
Milwaukee, WI	95	66	21	4	3	1	6	Long Beach, CA	76	50	15	4	1	6	10		
Peoria, IL	60	39	14	4	1	2	4	Los Angeles, CA	224	142	55	13	10	4	29		
Rockford, IL	60	41	14	3	2	—	2	Pasadena, CA	17	9	5	2	—	1	2		
South Bend, IN	63	42	13	5	2	1	8	Portland, OR	132	90	32	3	2	5	5		
Toledo, OH	71	41	20	5	4	1	5	Sacramento, CA	205	149	40	7	5	4	11		
Youngstown, OH	58	50	6	1	1	—	2	San Diego, CA	141	102	24	12	2	1	9		
W.N. Central	685	452	163	43	10	13	54	San Francisco, CA	110	72	26	9	—	3	6		
Des Moines, IA	106	71	28	5	1	1	7	San Jose, CA	192	142	43	6	1	—	19		
Duluth, MN	33	24	5	4	—	—	2	Santa Cruz, CA	33	27	3	2	—	1	2		
Kansas City, KS	43	29	10	3	—	1	2	Seattle, WA	118	78	28	9	3	—	13		
Kansas City, MO	86	51	23	8	2	1	8	Spokane, WA	58	46	10	2	—	—	4		
Lincoln, NE	44	31	11	2	—	—	1	Tacoma, WA	138	99	24	11	2	2	11		
Minneapolis, MN	76	48	17	7	2	2	7	Total¶	11,506	7,802	2,622	669	207	202	812		
Omaha, NE	103	74	27	—	1	1	14										
St. Louis, MO	73	40	19	6	3	3	1										
St. Paul, MN	36	26	5	—	1	3	4										
Wichita, KS	85	58	18	8	—	1	8										

U: Unavailable. —: No reported cases.

* Mortality data in this table are voluntarily reported from 122 cities in the United States, most of which have populations of >100,000. A death is reported by the place of its occurrence and by the week that the death certificate was filed. Fetal deaths are not included.

† Pneumonia and influenza.

§ Because of changes in reporting methods in this Pennsylvania city, these numbers are partial counts for the current week. Complete counts will be available in 4 to 6 weeks.

¶ Total includes unknown ages.