

Notifiable Diseases and Mortality Tables

TABLE I. Provisional cases of infrequently reported notifiable diseases (<1,000 cases reported during the preceding year) — United States, week ending July 26, 2014 (30th week)* (Export data)

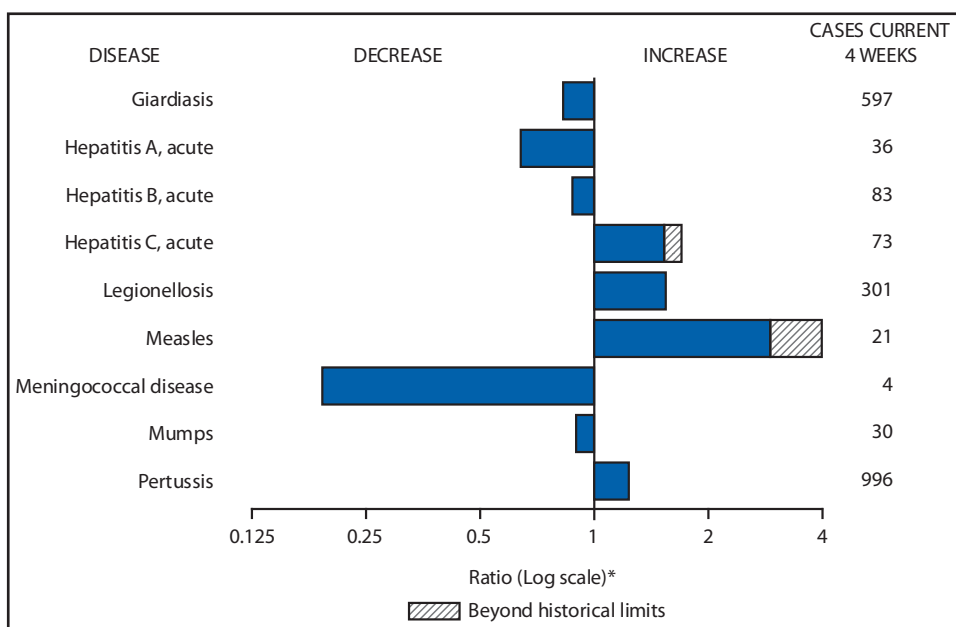
Disease	Current week	Cum 2014	5-year weekly average [†]	Total cases reported for previous years					States reporting cases during current week (No.)
				2013	2012	2011	2010	2009	
Anthrax	—	—	—	—	—	1	—	1	
Arboviral diseases ^{§, ¶} :									
California serogroup virus disease	—	3	6	95	81	137	75	55	
Eastern equine encephalitis virus disease	—	—	0	8	15	4	10	4	
Powassan virus disease	—	—	0	12	7	16	8	6	
St. Louis encephalitis virus disease	—	1	0	1	3	6	10	12	
Western equine encephalitis virus disease	—	—	—	—	—	—	—	—	
Botulism, total	—	67	2	152	168	153	112	118	
foodborne	—	3	0	4	27	24	7	10	
infant	—	53	2	136	123	97	80	83	
other (wound and unspecified)	—	11	0	12	18	32	25	25	
Brucellosis	—	35	2	99	114	79	115	115	
Chancroid	—	10	0	10	15	8	24	28	
Cholera	—	—	1	14	17	40	13	10	
Cyclosporiasis [§]	31	155	21	784	123	151	179	141	NY (1), NYC (3), FL (8), AR (1), TX (18)
Diphtheria	—	1	—	—	1	—	—	—	
<i>Haemophilus influenzae</i> ,** invasive disease (age <5 yrs):									
serotype b	—	13	0	31	30	14	23	35	
nonserotype b	—	98	2	222	205	145	200	236	
unknown serotype	1	150	3	184	210	226	223	178	OH (1)
Hansen disease [§]	1	33	2	81	82	82	98	103	NYC (1)
Hantavirus pulmonary syndrome [§]	—	11	1	21	30	23	20	20	
Hemolytic uremic syndrome, postdiarrheal [§]	3	78	9	329	274	290	266	242	MN (1), OK (2)
Hepatitis B, virus infection perinatal	—	26	1	50	40	U	U	U	
Influenza-associated pediatric mortality ^{§, ††}	—	99	1	161	52	118	61	358	
Leptospirosis	—	7	0	NN	NN	NN	NN	NN	
Listeriosis	7	267	22	730	727	870	821	851	NYC (1), PA (2), FL (2), AL (1), CO (1)
Measles ^{§§}	7	578	2	187	55	220	63	71	OH (6), TX (1)
Meningococcal disease, invasive ^{¶¶} :									
A, C, Y, and W-135	—	64	3	142	161	257	280	301	
serogroup B	—	33	2	99	110	159	135	174	
other serogroup	—	14	0	17	20	20	12	23	
unknown serogroup	1	140	5	298	260	323	406	482	OR (1)
Novel influenza A virus infections ^{***}	—	—	188	21	313	14	4	43,774	
Plague	—	1	0	4	4	3	2	8	
Poliomyelitis, paralytic	—	—	0	1	—	—	—	1	
Polio virus Infection, nonparalytic [§]	—	—	—	—	—	—	—	—	
Psittacosis [§]	—	—	0	6	2	2	4	9	
Q fever, total [§]	1	71	3	153	135	134	131	113	
acute	1	56	3	121	113	110	106	93	TX (1)
chronic	—	15	0	32	22	24	25	20	
Rabies, human	—	—	0	2	1	6	2	4	
Rubella ^{†††}	—	6	0	9	9	4	5	3	
Rubella, congenital syndrome	—	—	—	1	3	—	—	2	
SARS-CoV [§]	—	—	—	—	—	—	—	—	
Smallpox [§]	—	—	—	—	—	—	—	—	
Streptococcal toxic-shock syndrome [§]	1	125	2	224	194	168	142	161	NC (1)
Syphilis, congenital (age <1 yr) ^{§§§}	—	109	8	348	322	360	377	423	
Tetanus	1	14	1	26	37	36	26	18	OK (1)
Toxic-shock syndrome (staphylococcal) [§]	2	28	2	71	65	78	82	74	OH (2)
Trichinellosis	—	8	0	22	18	15	7	13	
Tularemia	2	47	6	202	149	166	124	93	MO (1), KY (1)
Typhoid fever	2	159	8	338	354	390	467	397	NY (1), TX (1)
Vancomycin-intermediate <i>Staphylococcus aureus</i> [§]	3	101	2	244	134	82	91	78	NY (1), NYC (1), AL (1)
Vancomycin-resistant <i>Staphylococcus aureus</i> [§]	—	—	0	—	2	—	2	1	
Vibriosis (noncholera <i>Vibrio</i> species infections) [§]	17	329	43	1,198	1,111	832	846	789	PA (1), MO (1), MD (3), VA (1), NC (1), FL (6), TX (2), WA (2)
Viral hemorrhagic fever ^{¶¶¶}	—	—	—	—	—	—	1	NN	
Yellow fever	—	—	—	—	—	—	—	—	

See Table 1 footnotes on next page.

TABLE I. (Continued) Provisional cases of infrequently reported notifiable diseases (<1,000 cases reported during the preceding year) — United States, week ending July 26, 2014 (30th week)*

—: No reported cases. N: Not reportable. NN: Not Nationally Notifiable. Cum: Cumulative year-to-date counts.
 * Case counts for reporting years 2013 and 2014 are provisional and subject to change. For further information on interpretation of these data, see <http://www.cdc.gov/nndss/document/ProvisionalNationalNotifiableDiseasesSurveillanceData20100927.pdf>.
 † Calculated by summing the incidence counts for the current week, the 2 weeks preceding the current week, and the 2 weeks following the current week, for a total of 5 preceding years. Additional information is available at <http://www.cdc.gov/nndss/document/5yearweeklyaverage.pdf>.
 ‡ Not reportable in all states. Data from states where the condition is not reportable are excluded from this table except starting in 2007 for the arboviral diseases, STD data, TB data, and influenza-associated pediatric mortality, and in 2003 for SARS-CoV. Reporting exceptions are available at http://www.cdc.gov/nndss/document/SRCA_FINAL_REPORT_2006-2012_final.xlsx.
 § Includes both neuroinvasive and nonneuroinvasive. Updated weekly from reports to the Division of Vector-Borne Infectious Diseases, National Center for Zoonotic, Vector-Borne, and Enteric Diseases (ArboNET Surveillance). Data for West Nile virus are available in Table II.
 ** Data for *H. influenzae* (all ages, all serotypes) are available in Table II.
 †† Updated weekly from reports to the Influenza Division, National Center for Immunization and Respiratory Diseases. Since September 29, 2013, 105 influenza-associated pediatric deaths occurring during the 2013-14 influenza season have been reported.
 ‡‡ The seven measles cases reported for the current week were imported.
 §§ Data for meningococcal disease (all serogroups) are available in Table II.
 ¶¶ CDC discontinued reporting of individual confirmed and probable cases of influenza A (H1N1)pdm09 virus infections on July 24, 2009. During 2009, four cases of human infection with novel influenza A viruses, different from the influenza A (H1N1)pdm09 virus, were reported to CDC. The four cases of novel influenza A virus infection reported to CDC during 2010, the fourteen cases reported during 2011, the 313 cases reported in 2012, and the 21 cases reported during 2013 are different from the influenza A (H1N1)pdm09 virus. Total case counts are provided by the Influenza Division, National Center for Immunization and Respiratory Diseases (NCIRD).
 ††† No rubella cases were reported for the current week.
 §§§ Updated weekly from reports to the Division of STD Prevention, National Center for HIV/AIDS, Viral Hepatitis, STD, and TB Prevention.
 ¶¶¶ There were no cases of viral hemorrhagic fever reported during the current week. See Table II for dengue hemorrhagic fever.

FIGURE I. Selected notifiable disease reports, United States, comparison of provisional 4-week totals July 26, 2014, with historical data



* Ratio of current 4-week total to mean of 15 4-week totals (from previous, comparable, and subsequent 4-week periods for the past 5 years). The point where the hatched area begins is based on the mean and two standard deviations of these 4-week totals.

Notifiable Disease Data Team and 122 Cities Mortality Data Team

Umed Ajani
 Deborah A. Adams Willie J. Anderson
 Lenee Blanton Rosaline Dhara
 Diana Harris Onweh Alan W. Schley
 Pearl C. Sharp

Morbidity and Mortality Weekly Report

TABLE II. Provisional cases of selected notifiable diseases, United States, weeks ending July 26, 2014, and July 27, 2013 (30th week)* (Export data)

Reporting area	<i>Babesiosis</i>					<i>Chlamydia trachomatis</i> infection					Coccidioidomycosis				
	Current week	Previous 52 weeks		Cum 2014	Cum 2013	Current week	Previous 52 weeks		Cum 2014	Cum 2013	Current week	Previous 52 weeks		Cum 2014	Cum 2013
		Med	Max				Med	Max				Med	Max		
United States	53	18	144	381	789	11,418	26,346	29,630	710,417	803,403	66	179	293	5,210	5,032
New England	15	5	83	227	470	207	840	1,157	22,548	27,811	—	0	1	3	1
Connecticut	—	1	36	56	182	53	238	388	6,930	7,396	N	0	0	N	N
Maine	4	0	6	15	10	—	61	106	1,163	1,873	N	0	0	N	N
Massachusetts	2	2	33	108	264	44	399	679	10,538	13,441	—	0	0	—	—
New Hampshire	1	0	2	7	13	4	35	76	414	1,821	—	0	1	1	1
Rhode Island	8	1	27	41	—	77	86	147	2,442	2,346	—	0	1	2	—
Vermont	—	0	2	—	1	29	36	98	1,061	934	N	0	0	N	N
Mid. Atlantic	38	7	52	144	247	1,864	3,397	3,782	95,551	100,385	—	0	0	—	—
New Jersey	—	1	16	39	130	159	565	692	16,059	16,153	N	0	0	N	N
New York (Upstate)	28	3	52	81	88	747	755	1,866	20,939	20,256	N	0	0	N	N
New York City	10	0	11	24	29	—	1,126	1,267	31,508	33,754	N	0	0	N	N
Pennsylvania	N	0	0	N	N	958	942	1,324	27,045	30,222	N	0	0	N	N
E.N. Central	—	0	9	7	33	1,228	3,876	4,785	102,056	121,996	—	1	3	33	17
Illinois	—	0	0	—	—	32	940	1,441	21,538	35,714	N	0	0	N	N
Indiana	—	0	1	—	—	217	551	685	15,253	16,300	N	0	0	N	N
Michigan	—	0	1	1	—	422	831	1,091	23,229	25,909	—	0	3	25	9
Ohio	N	0	0	N	N	299	1,040	1,166	29,604	30,677	—	0	1	8	5
Wisconsin	—	0	9	6	33	258	450	549	12,432	13,396	—	0	1	—	3
W.N. Central	—	0	10	—	31	360	1,599	1,826	43,365	46,649	—	2	6	68	55
Iowa	N	0	0	N	N	17	221	263	6,359	6,193	N	0	0	N	N
Kansas	N	0	0	N	N	44	216	258	5,839	6,357	N	0	0	N	N
Minnesota	—	0	10	—	28	24	358	423	9,152	10,671	—	1	6	56	36
Missouri	N	0	0	N	N	153	528	627	14,692	15,522	—	0	1	4	12
Nebraska	—	0	0	—	1	115	148	232	4,333	3,979	—	0	1	1	1
North Dakota	—	0	0	—	1	7	61	83	1,757	1,617	—	0	2	7	6
South Dakota	—	0	0	—	1	—	71	99	1,233	2,310	N	0	0	N	N
S. Atlantic	—	0	2	1	4	4,096	5,420	6,944	156,592	162,216	—	0	1	4	4
Delaware	—	0	1	—	1	89	81	220	2,334	2,883	—	0	1	—	—
District of Columbia	N	0	0	N	N	—	0	190	—	3,940	—	0	1	—	—
Florida	N	0	0	N	N	1,079	1,606	1,829	47,489	45,869	N	0	0	N	N
Georgia	N	0	0	N	N	1,066	996	2,050	25,785	28,541	N	0	0	N	N
Maryland	—	0	1	1	3	—	476	804	12,338	13,942	—	0	1	4	4
North Carolina	N	0	0	N	N	1,015	944	1,840	30,822	29,661	N	0	0	N	N
South Carolina	—	0	1	—	—	—	523	926	14,743	15,289	N	0	0	N	N
Virginia	N	0	0	N	N	768	692	1,267	20,493	19,232	N	0	0	N	N
West Virginia	—	0	0	—	—	79	94	127	2,588	2,859	N	0	0	N	N
E.S. Central	—	0	0	—	—	598	1,760	2,209	44,170	54,483	—	0	0	—	—
Alabama	—	0	0	—	—	—	520	734	11,798	17,257	N	0	0	N	N
Kentucky	N	0	0	N	N	350	318	483	9,388	9,656	N	0	0	N	N
Mississippi	N	0	0	N	N	—	296	987	7,479	10,229	N	0	0	N	N
Tennessee	—	0	0	—	—	248	583	860	15,505	17,341	N	0	0	N	N
W.S. Central	—	0	1	—	1	2,044	3,226	4,557	87,219	110,639	—	0	1	1	3
Arkansas	N	0	0	N	N	—	284	424	8,434	9,365	N	0	0	N	N
Louisiana	—	0	1	—	1	—	447	1,359	5,822	14,588	—	0	1	1	3
Oklahoma	N	0	0	N	N	62	236	532	5,384	10,594	N	0	0	N	N
Texas	N	0	1	N	N	1,982	2,368	2,991	67,579	76,092	N	0	0	N	N
Mountain	—	0	0	—	—	366	1,803	2,764	50,351	51,458	66	129	209	3,907	3,206
Arizona	N	0	0	N	N	—	602	1,348	16,933	15,037	66	127	208	3,831	3,120
Colorado	N	0	0	N	N	129	387	591	11,580	11,913	N	0	0	N	N
Idaho	N	0	0	N	N	—	98	156	1,684	3,086	N	0	0	N	N
Montana	—	0	0	—	—	71	76	104	2,239	2,150	—	0	2	7	2
Nevada	N	0	0	N	N	—	216	604	6,744	6,677	—	2	5	38	41
New Mexico	N	0	0	N	N	141	218	353	6,230	7,137	—	0	2	9	20
Utah	—	0	0	—	—	25	146	177	4,126	4,272	—	1	4	20	21
Wyoming	—	0	0	—	—	—	32	67	815	1,186	—	0	1	2	2
Pacific	—	0	1	2	3	655	3,963	4,613	108,565	127,766	—	51	93	1,194	1,746
Alaska	N	0	0	N	N	38	111	147	3,204	3,332	—	0	0	—	—
California	—	0	1	2	3	—	3,072	3,528	83,385	97,994	—	51	93	1,192	1,742
Hawaii	N	0	0	N	N	5	126	158	3,306	3,806	N	0	0	N	N
Oregon	—	0	0	—	—	224	288	395	8,765	8,270	—	0	1	2	4
Washington	—	0	1	—	—	388	390	596	9,905	14,364	N	0	0	N	N
Territories															
American Samoa	N	—	—	N	N	—	—	—	—	—	N	—	—	N	N
C.N.M.I.	—	—	—	—	—	—	—	—	—	—	—	—	—	—	—
Guam	—	0	0	—	—	—	15	22	—	600	—	0	0	—	1
Puerto Rico	N	0	0	N	N	—	95	277	2,682	3,322	N	0	0	N	N
U.S. Virgin Islands	N	0	0	N	N	—	15	23	294	449	—	0	0	—	—

C.N.M.I.: Commonwealth of Northern Mariana Islands.

U: Unavailable. —: No reported cases. N: Not reportable. NN: Not Nationally Notifiable. Cum: Cumulative year-to-date counts. Med: Median. Max: Maximum.

* Case counts for reporting year 2013 and 2014 are provisional and subject to change. For further information on interpretation of these data, see <http://www.cdc.gov/nndss/document/ProvisionalNationalNotifiableDiseasesSurveillanceData20100927.pdf>. Data for TB are displayed in Table IV, which appears quarterly.

Morbidity and Mortality Weekly Report

TABLE II. (Continued) Provisional cases of selected notifiable diseases, United States, weeks ending July 26, 2014, and July 27, 2013 (30th week)* (Export data)

Reporting area	Dengue Virus Infection														
	Cryptosporidiosis					Dengue Fever†					Dengue Hemorrhagic Fever‡				
	Current week	Previous 52 weeks		Cum 2014	Cum 2013	Current week	Previous 52 weeks		Cum 2014	Cum 2013	Current week	Previous 52 weeks		Cum 2014	Cum 2013
	Med	Max				Med	Max				Med	Max			
United States	120	109	475	2,977	3,674	—	8	49	129	356	—	0	2	1	3
New England	4	5	14	132	140	—	0	3	6	16	—	0	0	—	—
Connecticut	—	0	5	18	19	—	0	2	—	6	—	0	0	—	—
Maine	—	1	4	26	15	—	0	1	1	1	—	0	0	—	—
Massachusetts	3	2	7	58	72	—	0	1	1	—	—	0	0	—	—
New Hampshire	—	0	4	11	20	—	0	1	—	3	—	0	0	—	—
Rhode Island	—	0	3	10	4	—	0	1	2	5	—	0	0	—	—
Vermont	1	0	3	9	10	—	0	2	2	1	—	0	0	—	—
Mid. Atlantic	20	12	42	309	343	—	2	12	52	95	—	0	1	—	1
New Jersey	—	0	5	13	36	—	0	4	15	—	—	0	0	—	—
New York (Upstate)	11	4	16	103	83	—	0	4	14	31	—	0	1	—	—
New York City	—	2	6	38	32	—	1	9	16	48	—	0	0	—	1
Pennsylvania	9	6	30	155	192	—	0	3	7	16	—	0	0	—	—
E.N. Central	15	22	64	595	763	—	0	6	12	34	—	0	0	—	—
Illinois	—	4	16	78	136	—	0	3	1	10	—	0	0	—	—
Indiana	—	3	7	59	70	—	0	1	—	3	—	0	0	—	—
Michigan	1	4	15	105	125	—	0	3	—	9	—	0	0	—	—
Ohio	10	6	17	166	171	—	0	1	7	6	—	0	0	—	—
Wisconsin	4	7	25	187	261	—	0	2	4	6	—	0	0	—	—
W.N. Central	6	14	200	327	939	—	0	3	—	17	—	0	1	1	2
Iowa	—	5	160	124	504	—	0	0	—	—	—	0	1	—	1
Kansas	—	1	7	29	48	—	0	1	—	2	—	0	0	—	—
Minnesota	—	0	17	—	140	—	0	2	—	12	—	0	0	—	1
Missouri	5	3	12	81	97	—	0	1	—	1	—	0	0	—	—
Nebraska	—	2	11	21	60	—	0	0	—	—	—	0	0	—	—
North Dakota	—	1	7	17	27	—	0	0	—	1	—	0	1	1	—
South Dakota	1	3	17	55	63	—	0	1	—	1	—	0	0	—	—
S. Atlantic	56	25	55	734	503	—	2	16	23	97	—	0	1	—	—
Delaware	—	0	2	2	6	—	0	1	1	—	—	0	0	—	—
District of Columbia	N	0	0	N	N	—	0	0	—	—	—	0	0	—	—
Florida	48	9	32	365	186	—	0	13	6	63	—	0	0	—	—
Georgia	2	6	16	134	128	—	0	2	2	7	—	0	0	—	—
Maryland	—	1	4	31	27	—	0	2	5	5	—	0	0	—	—
North Carolina	3	1	28	88	50	—	0	2	4	9	—	0	0	—	—
South Carolina	1	2	8	45	40	—	0	4	—	2	—	0	0	—	—
Virginia	2	3	9	66	55	—	0	3	5	11	—	0	1	—	—
West Virginia	—	0	2	3	11	—	0	1	—	—	—	0	0	—	—
E.S. Central	5	6	19	153	151	—	0	2	1	12	—	0	0	—	—
Alabama	1	2	9	57	59	—	0	2	—	3	—	0	0	—	—
Kentucky	2	1	3	32	44	—	0	0	—	—	—	0	0	—	—
Mississippi	—	1	5	23	19	—	0	1	1	1	—	0	0	—	—
Tennessee	2	2	6	41	29	—	0	1	—	8	—	0	0	—	—
W.S. Central	7	12	47	270	301	—	0	11	6	23	—	0	0	—	—
Arkansas	1	1	12	12	20	—	0	1	—	1	—	0	0	—	—
Louisiana	—	3	33	70	115	—	0	1	1	3	—	0	0	—	—
Oklahoma	3	1	4	38	33	—	0	2	—	1	—	0	0	—	—
Texas	3	7	37	150	133	—	0	11	5	18	—	0	0	—	—
Mountain	5	8	61	195	243	—	0	1	3	5	—	0	0	—	—
Arizona	—	1	5	27	23	—	0	0	—	1	—	0	0	—	—
Colorado	2	1	7	34	45	—	0	0	—	—	—	0	0	—	—
Idaho	3	2	22	37	55	—	0	1	1	—	—	0	0	—	—
Montana	—	1	23	27	29	—	0	1	—	1	—	0	0	—	—
Nevada	—	0	2	8	12	—	0	1	2	2	—	0	0	—	—
New Mexico	—	1	4	31	22	—	0	0	—	—	—	0	0	—	—
Utah	—	1	8	22	45	—	0	0	—	—	—	0	0	—	—
Wyoming	—	0	25	9	12	—	0	0	—	1	—	0	0	—	—
Pacific	2	10	76	262	291	—	1	9	26	57	—	0	0	—	—
Alaska	—	0	1	1	2	—	0	0	—	1	—	0	0	—	—
California	—	6	15	165	136	—	1	9	20	43	—	0	0	—	—
Hawaii	—	0	2	2	1	—	0	2	4	8	—	0	0	—	—
Oregon	—	3	58	62	124	—	0	0	—	—	—	0	0	—	—
Washington	2	0	11	32	28	—	0	2	2	5	—	0	0	—	—
Territories															
American Samoa	N	—	—	N	N	—	—	—	—	—	—	—	—	—	—
C.N.M.I.	—	—	—	—	—	—	—	—	—	—	—	—	—	—	—
Guam	—	0	0	—	—	—	0	0	—	—	—	0	0	—	—
Puerto Rico	N	0	0	N	N	—	33	418	375	5,127	—	0	9	2	76
U.S. Virgin Islands	—	0	0	—	—	—	0	5	—	129	—	0	0	—	5

C.N.M.I.: Commonwealth of Northern Mariana Islands.

U: Unavailable. —: No reported cases. N: Not reportable. NN: Not Nationally Notifiable. Cum: Cumulative year-to-date counts. Med: Median. Max: Maximum.

* Case counts for reporting year 2013 and 2014 are provisional and subject to change. For further information on interpretation of these data, see <http://www.cdc.gov/nndss/document/ProvisionalNationalNotifiableDiseasesSurveillanceData20100927.pdf>. Data for TB are displayed in Table IV, which appears quarterly.

† Dengue Fever includes cases that meet criteria for Dengue Fever with hemorrhage, other clinical and unknown case classifications.

‡ DHF includes cases that meet criteria for dengue shock syndrome (DSS), a more severe form of DHF.

Morbidity and Mortality Weekly Report

TABLE II. (Continued) Provisional cases of selected notifiable diseases, United States, weeks ending July 26, 2014, and July 27, 2013 (30th week)* (Export data)

Reporting area	Ehrlichiosis/Anaplasmosis†														
	<i>Ehrlichia chaffeensis</i>					<i>Anaplasma phagocytophilum</i>					Undetermined				
	Current week	Previous 52 weeks		Cum 2014	Cum 2013	Current week	Previous 52 weeks		Cum 2014	Cum 2013	Current week	Previous 52 weeks		Cum 2014	Cum 2013
	Med	Max				Med	Max				Med	Max			
United States	37	19	100	645	778	30	33	114	686	1,365	1	2	14	44	106
New England	—	0	9	12	22	4	5	23	176	237	—	0	1	1	—
Connecticut	—	0	0	—	—	—	0	5	—	103	—	0	0	—	—
Maine	—	0	1	5	—	4	2	13	87	44	—	0	1	1	—
Massachusetts	—	0	0	—	—	—	0	0	—	—	—	0	0	—	—
New Hampshire	—	0	1	1	5	—	0	4	26	55	—	0	1	—	—
Rhode Island	—	0	9	5	15	—	0	16	34	18	—	0	0	—	—
Vermont	—	0	2	1	2	—	1	4	29	17	—	0	1	—	—
Mid. Atlantic	2	2	17	55	60	23	10	39	235	261	—	0	3	6	13
New Jersey	—	0	3	20	32	—	0	4	17	62	—	0	2	2	2
New York (Upstate)	1	1	17	29	13	21	7	36	201	182	—	0	3	4	6
New York City	1	0	2	6	10	2	0	5	17	12	—	0	0	—	—
Pennsylvania	—	0	2	—	5	—	0	5	—	5	—	0	2	—	5
E.N. Central	—	1	9	30	53	—	9	38	220	419	—	0	8	14	49
Illinois	—	0	5	24	30	—	0	2	12	7	—	0	0	—	—
Indiana	—	0	0	—	—	—	0	0	—	—	—	0	4	—	24
Michigan	—	0	1	1	1	—	0	1	—	3	—	0	0	—	1
Ohio	—	0	1	1	5	—	0	1	2	3	—	0	1	—	1
Wisconsin	—	0	6	4	17	—	8	38	206	406	—	0	5	14	23
W.N. Central	8	3	43	199	305	—	1	37	16	409	—	0	6	14	28
Iowa	N	0	0	N	N	N	0	0	N	N	N	0	0	N	N
Kansas	1	0	4	27	64	—	0	1	4	5	—	0	1	3	—
Minnesota	—	0	2	—	3	—	0	36	—	397	—	0	6	—	17
Missouri	7	2	38	171	233	—	0	2	9	3	—	0	3	11	9
Nebraska	—	0	1	—	4	—	0	1	1	1	—	0	0	—	—
North Dakota	—	0	1	1	—	—	0	2	2	3	—	0	1	—	2
South Dakota	—	0	0	—	1	—	0	0	—	—	—	0	0	—	—
S. Atlantic	3	4	23	137	144	2	0	4	22	27	—	0	1	1	3
Delaware	1	0	5	15	9	—	0	1	1	—	—	0	0	—	1
District of Columbia	N	0	0	N	N	N	0	0	N	N	N	0	0	N	N
Florida	—	0	3	20	12	—	0	2	3	1	—	0	0	—	—
Georgia	—	0	5	15	15	—	0	0	—	—	—	0	0	—	—
Maryland	—	0	5	19	11	—	0	2	7	4	—	0	1	—	—
North Carolina	—	0	12	20	31	—	0	3	4	5	—	0	0	—	—
South Carolina	—	0	2	4	5	—	0	0	—	—	—	0	0	—	—
Virginia	2	1	8	43	60	2	0	2	7	14	—	0	1	1	—
West Virginia	—	0	1	1	1	—	0	0	—	3	—	0	0	—	2
E.S. Central	4	2	12	91	95	—	0	1	2	6	1	0	2	6	4
Alabama	—	0	2	6	7	—	0	1	2	1	—	0	1	—	—
Kentucky	3	1	7	37	34	—	0	0	—	—	—	0	0	—	—
Mississippi	—	0	0	—	3	—	0	0	—	1	—	0	0	—	1
Tennessee	1	1	6	48	51	—	0	1	—	4	1	0	2	6	3
W.S. Central	20	3	63	121	98	1	0	8	15	6	—	0	0	—	—
Arkansas	4	1	15	83	90	—	0	2	12	4	—	0	0	—	—
Louisiana	—	0	1	1	—	—	0	0	—	1	—	0	0	—	—
Oklahoma	16	0	62	32	4	1	0	8	3	1	—	0	0	—	—
Texas	—	0	1	5	4	—	0	0	—	—	—	0	0	—	—
Mountain	—	0	1	—	1	—	0	1	—	—	—	0	1	—	1
Arizona	—	0	0	—	—	—	0	0	—	—	—	0	1	—	1
Colorado	N	0	0	N	N	N	0	0	N	N	N	0	0	N	N
Idaho	N	0	0	N	N	N	0	0	N	N	N	0	0	N	N
Montana	—	0	0	—	1	—	0	0	—	—	—	0	0	—	—
Nevada	—	0	0	—	—	—	0	1	—	—	—	0	0	—	—
New Mexico	N	0	0	N	N	N	0	0	N	N	N	0	0	N	N
Utah	—	0	1	—	—	—	0	0	—	—	—	0	0	—	—
Wyoming	—	0	0	—	—	—	0	0	—	—	—	0	0	—	—
Pacific	—	0	0	—	—	—	0	2	—	—	—	0	1	2	8
Alaska	N	0	0	N	N	N	0	0	N	N	N	0	0	N	N
California	—	0	0	—	—	—	0	0	—	—	—	0	1	2	8
Hawaii	N	0	0	N	N	N	0	0	N	N	N	0	0	N	N
Oregon	—	0	0	—	—	—	0	1	—	—	—	0	0	—	—
Washington	—	0	0	—	—	—	0	2	—	—	—	0	0	—	—
Territories															
American Samoa	N	—	—	N	N	N	—	—	N	N	N	—	—	N	N
C.N.M.I.	—	—	—	—	—	—	—	—	—	—	—	—	—	—	—
Guam	N	0	0	N	N	N	0	0	N	N	N	0	0	N	N
Puerto Rico	N	0	0	N	N	N	0	0	N	N	N	0	0	N	N
U.S. Virgin Islands	—	0	0	—	—	—	0	0	—	—	—	0	0	—	—

C.N.M.I.: Commonwealth of Northern Mariana Islands.

U: Unavailable. —: No reported cases. N: Not reportable. NN: Not Nationally Notifiable. Cum: Cumulative year-to-date counts. Med: Median. Max: Maximum.

* Case counts for reporting year 2013 and 2014 are provisional and subject to change. For further information on interpretation of these data, see <http://www.cdc.gov/nndss/document/ProvisionalNationalNotifiableDiseasesSurveillanceData20100927.pdf>. Data for TB are displayed in Table IV, which appears quarterly.

† Cumulative total *E. ewingii* cases reported for year 2013 = 31, and 5 cases reported for 2014.

Morbidity and Mortality Weekly Report

TABLE II. (Continued) Provisional cases of selected notifiable diseases, United States, weeks ending July 26, 2014, and July 27, 2013 (30th week)* (Export data)

Reporting area	Giardiasis					Gonorrhea					<i>Haemophilus influenzae</i> , invasive† All ages, all serotypes				
	Current week	Previous 52 weeks		Cum 2014	Cum 2013	Current week	Previous 52 weeks		Cum 2014	Cum 2013	Current week	Previous 52 weeks		Cum 2014	Cum 2013
		Med	Max				Med	Max				Med	Max		
United States	172	227	439	6,201	7,451	2,873	6,003	7,239	168,295	186,504	35	62	110	1,868	2,375
New England	25	25	59	619	664	100	131	185	3,515	3,604	3	4	16	119	226
Connecticut	1	4	11	95	110	83	47	116	1,252	1,516	—	1	3	30	35
Maine	—	4	12	78	91	—	4	9	91	161	—	0	2	11	16
Massachusetts	18	12	26	337	351	3	64	113	1,773	1,585	2	2	14	51	152
New Hampshire	1	1	7	27	47	7	2	8	89	78	—	0	2	14	16
Rhode Island	1	0	7	26	16	7	8	41	269	213	—	0	9	8	—
Vermont	4	3	16	56	49	—	1	6	41	51	1	0	2	5	7
Mid. Atlantic	57	50	94	1,324	1,399	403	737	926	20,456	22,963	12	10	24	318	373
New Jersey	—	5	12	92	190	29	131	164	3,522	3,917	—	2	7	84	73
New York (Upstate)	29	17	61	490	421	121	117	339	3,212	3,547	5	3	17	79	91
New York City	13	14	26	415	443	—	249	324	6,846	7,805	2	2	7	70	71
Pennsylvania	15	14	28	327	345	253	252	326	6,876	7,694	5	3	7	85	138
E.N. Central	17	31	65	708	1,034	269	935	1,240	24,512	31,565	6	9	19	250	384
Illinois	—	2	22	29	168	11	220	375	4,466	9,248	—	3	6	68	100
Indiana	—	3	11	59	120	60	139	190	3,831	4,149	—	2	6	46	85
Michigan	—	9	27	237	262	76	181	271	5,198	6,147	2	2	5	48	61
Ohio	10	8	25	208	267	90	317	391	8,863	9,437	4	2	9	76	91
Wisconsin	7	6	15	175	217	32	81	123	2,154	2,584	—	1	5	12	47
W.N. Central	2	15	65	342	768	134	331	421	9,234	9,771	—	4	14	134	164
Iowa	1	5	15	104	120	3	27	43	777	835	—	0	1	2	—
Kansas	—	2	7	42	48	10	48	64	1,407	1,170	—	0	3	15	28
Minnesota	—	0	24	—	306	6	71	107	1,880	2,132	—	2	8	60	48
Missouri	1	4	12	84	121	87	141	180	3,884	4,187	—	1	6	45	64
Nebraska	—	2	9	37	94	27	25	40	758	769	—	0	3	8	16
North Dakota	—	1	3	19	23	1	10	22	296	263	—	0	2	4	7
South Dakota	—	2	9	56	56	—	14	27	232	415	—	0	1	—	1
S. Atlantic	43	47	73	1,231	1,281	1,064	1,400	1,750	40,635	41,803	8	16	30	533	600
Delaware	—	0	3	9	9	23	25	65	683	693	—	0	3	12	7
District of Columbia	—	1	4	16	45	—	0	82	—	1,436	—	0	0	—	—
Florida	29	21	36	599	570	221	406	525	11,962	11,717	3	5	13	195	182
Georgia	7	12	26	283	345	307	251	612	6,701	8,264	—	2	8	74	97
Maryland	2	4	9	117	120	—	106	175	2,636	2,976	2	2	5	55	60
North Carolina	N	0	0	N	N	355	267	512	9,335	8,229	2	2	8	89	95
South Carolina	2	3	8	71	62	—	154	279	4,308	4,096	—	1	5	42	74
Virginia	2	5	13	111	108	139	151	372	4,534	3,802	1	1	7	42	60
West Virginia	1	1	4	25	22	19	18	34	476	590	—	1	3	24	25
E.S. Central	2	3	8	77	92	129	438	572	10,785	14,831	—	4	8	136	177
Alabama	2	3	8	77	92	—	143	216	3,054	4,966	—	1	4	40	52
Kentucky	N	0	0	N	N	79	81	109	2,179	2,447	—	0	3	19	33
Mississippi	N	0	0	N	N	—	87	276	2,084	3,035	—	0	2	15	19
Tennessee	N	0	0	N	N	50	130	210	3,468	4,383	—	2	6	62	73
W.S. Central	5	6	15	137	179	569	893	1,327	23,504	28,936	3	4	11	117	112
Arkansas	5	2	8	49	53	—	80	143	2,460	2,342	2	0	3	29	17
Louisiana	—	4	12	88	126	—	137	397	1,580	4,332	—	1	6	32	32
Oklahoma	—	0	0	—	—	14	79	151	1,658	2,842	1	2	9	51	61
Texas	N	0	0	N	N	555	632	802	17,806	19,420	—	0	1	5	2
Mountain	12	20	45	534	591	53	316	469	9,115	7,627	3	5	12	155	220
Arizona	2	2	7	51	49	—	136	262	3,905	2,951	—	1	4	29	84
Colorado	8	6	22	181	166	21	54	90	1,561	1,570	2	1	6	29	56
Idaho	2	2	7	72	74	2	4	15	95	78	1	0	3	13	10
Montana	—	2	6	37	37	10	6	11	173	100	—	0	1	5	2
Nevada	—	1	5	28	54	—	54	124	1,649	1,423	—	0	2	11	11
New Mexico	—	1	7	40	60	17	37	81	1,036	1,046	—	1	3	30	27
Utah	—	4	9	113	126	3	22	34	655	424	—	1	6	36	26
Wyoming	—	0	2	12	25	—	1	5	41	35	—	0	1	2	4
Pacific	9	51	125	1,229	1,443	152	952	1,126	26,539	25,404	—	3	8	106	119
Alaska	—	1	7	40	34	12	25	42	714	557	—	0	3	13	9
California	—	32	104	851	972	—	788	945	22,010	21,064	—	1	2	22	26
Hawaii	—	1	4	15	35	3	14	28	425	421	—	0	2	18	18
Oregon	4	7	15	169	182	47	35	71	1,146	960	—	1	4	49	62
Washington	5	8	66	154	220	90	83	121	2,244	2,402	—	0	3	4	4
Territories															
American Samoa	—	—	—	—	—	—	—	—	—	—	—	—	—	—	—
C.N.M.I.	—	—	—	—	—	—	—	—	—	—	—	—	—	—	—
Guam	—	0	1	—	2	—	0	9	—	58	—	0	0	—	—
Puerto Rico	—	0	9	19	29	—	8	21	248	189	—	0	1	—	—
U.S. Virgin Islands	—	0	0	—	—	—	1	5	32	37	—	0	0	—	—

C.N.M.I.: Commonwealth of Northern Mariana Islands.

U: Unavailable. —: No reported cases. N: Not reportable. NN: Not Nationally Notifiable. Cum: Cumulative year-to-date counts. Med: Median. Max: Maximum.

* Case counts for reporting year 2013 and 2014 are provisional and subject to change. For further information on interpretation of these data, see <http://www.cdc.gov/nndss/document/ProvisionalNationalNotifiableDiseasesSurveillanceData20100927.pdf>. Data for TB are displayed in Table IV, which appears quarterly.

† Data for *H. influenzae* (age <5 yrs for serotype b, nonserotype b, and unknown serotype) are available in Table I.

Morbidity and Mortality Weekly Report

TABLE II. (Continued) Provisional cases of selected notifiable diseases, United States, weeks ending July 26, 2014, and July 27, 2013 (30th week)* (Export data)

Reporting area	Hepatitis (viral, acute), by type														
	A					B					C				
	Current week	Previous 52 weeks		Cum 2014	Cum 2013	Current week	Previous 52 weeks		Cum 2014	Cum 2013	Current week	Previous 52 weeks		Cum 2014	Cum 2013
	Med	Max				Med	Max				Med	Max			
United States	11	24	55	569	1,003	18	54	76	1,405	1,676	14	39	67	981	1,145
New England	—	1	6	37	54	1	1	7	32	52	1	3	9	89	118
Connecticut	—	0	3	13	11	—	0	2	7	2	—	0	1	3	—
Maine	—	0	2	2	3	1	0	1	7	8	—	0	2	18	4
Massachusetts	—	0	3	15	26	—	1	7	14	41	—	2	7	67	111
New Hampshire	—	0	1	2	5	—	0	2	—	—	N	0	0	N	N
Rhode Island	—	0	1	3	2	U	0	0	U	U	U	0	0	U	U
Vermont	—	0	1	2	7	—	0	2	4	1	1	0	0	1	3
Mid. Atlantic	2	4	16	69	147	2	3	9	90	135	—	6	15	137	171
New Jersey	—	0	6	9	37	—	0	4	2	39	—	1	4	23	68
New York (Upstate)	1	1	5	15	36	—	1	3	22	26	—	2	11	54	49
New York City	—	1	7	25	37	—	1	4	29	43	—	0	4	12	9
Pennsylvania	1	1	4	20	37	2	1	4	37	27	—	1	6	48	45
E.N. Central	2	4	9	86	170	4	9	17	247	266	3	7	35	190	206
Illinois	—	1	5	28	28	—	1	5	26	55	—	0	2	7	24
Indiana	—	0	3	12	17	—	2	7	52	54	—	2	8	35	98
Michigan	—	1	4	23	62	—	1	4	28	32	1	2	8	64	42
Ohio	2	0	4	19	39	4	4	12	129	120	2	2	30	79	17
Wisconsin	—	0	3	4	24	—	0	2	12	5	—	0	3	5	25
W.N. Central	—	1	6	26	38	—	2	5	38	60	—	1	4	22	45
Iowa	—	0	3	4	2	—	0	2	6	7	—	0	0	—	—
Kansas	—	0	3	3	4	—	0	1	4	9	—	0	3	16	10
Minnesota	—	0	2	2	19	—	0	1	1	14	—	0	3	1	32
Missouri	—	0	2	12	2	—	1	4	22	24	—	0	2	4	—
Nebraska	—	0	2	1	7	—	0	2	3	3	—	0	1	1	1
North Dakota	—	0	2	4	2	—	0	1	1	—	—	0	1	—	2
South Dakota	—	0	1	—	2	—	0	1	1	3	—	0	1	—	—
S. Atlantic	6	5	11	133	132	7	17	27	476	497	3	8	18	208	216
Delaware	—	0	1	—	1	—	0	1	4	6	U	0	0	U	U
District of Columbia	—	0	0	—	—	—	0	0	—	—	—	0	0	—	—
Florida	3	2	6	54	41	5	7	14	188	168	—	2	6	50	78
Georgia	2	1	3	26	22	1	2	6	62	71	—	0	4	12	31
Maryland	—	0	3	13	17	1	0	3	18	29	—	1	3	25	33
North Carolina	1	0	2	18	29	—	1	16	58	42	2	1	9	55	32
South Carolina	—	0	1	4	6	—	1	3	17	27	—	0	1	3	—
Virginia	—	0	3	13	15	—	1	5	30	42	1	1	5	28	19
West Virginia	—	0	1	5	1	—	4	8	99	112	—	1	6	35	23
E.S. Central	—	1	4	19	33	2	11	17	307	341	—	6	13	166	209
Alabama	—	0	2	5	4	—	2	5	60	50	—	0	5	16	13
Kentucky	—	0	2	5	17	2	4	8	87	105	—	4	9	93	130
Mississippi	—	0	1	2	2	—	1	3	22	37	U	0	0	U	U
Tennessee	—	0	2	7	10	—	5	10	138	149	—	2	4	57	66
W.S. Central	1	3	12	76	62	2	5	18	112	171	2	2	9	48	56
Arkansas	—	0	1	1	4	—	0	4	9	37	—	0	5	7	14
Louisiana	—	0	3	5	5	—	1	8	35	38	—	0	3	12	12
Oklahoma	—	0	4	10	6	—	0	5	15	22	—	0	5	8	15
Texas	1	2	8	60	47	2	2	10	53	74	2	0	4	21	15
Mountain	—	2	7	41	140	—	1	5	27	53	1	1	5	42	44
Arizona	—	0	3	12	50	—	0	2	9	11	U	0	0	U	U
Colorado	—	0	2	7	45	—	0	2	1	14	—	0	2	4	13
Idaho	—	0	1	2	4	—	0	2	3	6	—	0	1	3	6
Montana	—	0	1	4	4	—	0	1	—	1	1	0	2	10	12
Nevada	—	0	2	5	14	—	0	3	11	17	—	0	1	2	7
New Mexico	—	0	2	8	15	—	0	1	—	1	—	0	2	6	2
Utah	—	0	2	3	8	—	0	1	3	3	—	0	2	17	4
Wyoming	—	0	0	—	—	—	0	0	—	—	—	0	0	—	—
Pacific	—	3	10	82	227	—	4	13	76	101	4	3	10	79	80
Alaska	—	0	1	1	1	—	0	1	2	1	—	0	0	—	—
California	—	3	9	64	178	—	2	7	38	67	—	1	4	25	42
Hawaii	—	0	1	1	14	—	0	1	3	4	—	0	0	—	—
Oregon	—	0	3	7	14	—	0	3	20	21	1	0	2	11	8
Washington	—	0	3	9	20	—	0	7	13	8	3	1	9	43	30
Territories															
American Samoa	—	—	—	—	—	—	—	—	—	—	—	—	—	—	—
C.N.M.I.	—	—	—	—	—	—	—	—	—	—	—	—	—	—	—
Guam	—	0	7	—	16	—	0	7	—	47	—	0	9	—	41
Puerto Rico	—	0	1	2	8	—	0	2	9	28	N	0	0	N	N
U.S. Virgin Islands	—	0	0	—	—	—	0	0	—	—	—	0	0	—	—

C.N.M.I.: Commonwealth of Northern Mariana Islands.

U: Unavailable. —: No reported cases. N: Not reportable. NN: Not Nationally Notifiable. Cum: Cumulative year-to-date counts. Med: Median. Max: Maximum.

* Case counts for reporting year 2013 and 2014 are provisional and subject to change. For further information on interpretation of these data, see <http://www.cdc.gov/nndss/document/ProvisionalNationalNotifiableDiseasesSurveillanceData20100927.pdf>. Data for TB are displayed in Table IV, which appears quarterly.

Morbidity and Mortality Weekly Report

TABLE II. (Continued) Provisional cases of selected notifiable diseases, United States, weeks ending July 26, 2014, and July 27, 2013 (30th week)* (Export data)

Reporting area	Invasive Pneumococcal disease [†]										Legionellosis				
	All ages					Age <5									
	Current week	Previous 52 weeks		Cum 2014	Cum 2013	Current week	Previous 52 weeks		Cum 2014	Cum 2013	Current week	Previous 52 weeks		Cum 2014	Cum 2013
	Med	Max				Med	Max				Med	Max			
United States	75	274	752	8,557	11,062	2	21	56	581	727	79	73	221	1,992	2,623
New England	1	12	24	377	458	—	1	2	27	26	2	4	22	106	158
Connecticut	—	4	10	137	227	—	0	1	5	10	—	1	4	26	31
Maine	1	2	8	98	84	—	0	1	5	3	—	0	3	7	9
Massachusetts	—	0	2	17	12	—	0	2	13	11	2	2	15	55	86
New Hampshire	—	1	6	48	53	—	0	1	3	2	—	0	3	5	15
Rhode Island	—	1	10	42	41	—	0	1	1	—	—	0	10	11	8
Vermont	—	1	4	35	41	—	0	0	—	—	—	0	1	2	9
Mid. Atlantic	15	31	115	924	1,514	1	2	10	41	80	20	17	56	439	797
New Jersey	—	2	19	32	402	—	0	2	2	25	—	1	15	32	144
New York (Upstate)	9	15	76	503	658	1	1	6	23	32	12	6	21	175	245
New York City	6	12	25	389	454	—	0	4	16	23	2	3	17	84	173
Pennsylvania	N	—	—	N	N	N	0	0	N	N	6	5	20	148	235
E.N. Central	11	52	84	1,500	2,070	—	3	9	93	114	20	16	102	392	719
Illinois	N	0	0	N	N	—	1	3	21	28	—	4	18	83	152
Indiana	—	10	33	314	449	—	1	4	20	16	1	2	8	63	47
Michigan	—	11	21	348	515	—	0	4	18	28	—	3	21	53	149
Ohio	9	20	38	612	801	—	1	4	27	26	19	6	66	189	299
Wisconsin	2	6	16	226	305	—	0	3	7	16	—	1	9	4	72
W.N. Central	1	16	37	408	702	—	1	4	25	65	3	3	18	97	91
Iowa	N	0	0	N	N	N	0	0	N	N	—	0	2	12	6
Kansas	—	2	9	87	102	N	0	0	N	N	—	0	3	7	4
Minnesota	—	6	18	159	367	—	0	3	8	25	1	1	4	25	24
Missouri	N	0	0	N	N	—	0	2	10	24	2	1	10	46	41
Nebraska	—	2	8	61	98	—	0	2	5	8	—	0	2	1	12
North Dakota	—	1	4	43	70	—	0	1	2	8	—	0	1	3	—
South Dakota	1	2	5	58	65	N	0	0	N	N	—	0	1	3	4
S. Atlantic	12	57	134	2,019	2,422	—	5	10	148	182	15	15	34	402	402
Delaware	—	0	5	24	21	—	0	1	1	—	—	0	2	10	10
District of Columbia	3	1	6	44	60	—	0	1	1	1	N	0	0	N	N
Florida	4	16	45	636	760	—	1	5	54	60	6	4	15	146	119
Georgia	3	16	61	578	713	—	1	5	35	51	—	1	9	37	40
Maryland	1	7	21	284	340	—	0	4	15	20	3	2	13	62	98
North Carolina	—	0	0	—	—	N	0	0	N	N	4	2	11	74	48
South Carolina	—	7	27	277	299	—	0	2	19	13	1	0	3	21	7
Virginia	—	0	3	15	—	—	0	3	14	25	—	1	8	39	71
West Virginia	1	4	15	161	229	—	0	2	9	12	1	0	4	13	9
E.S. Central	13	25	51	864	984	—	2	6	62	63	5	4	16	161	94
Alabama	1	3	10	129	125	—	0	2	10	13	2	1	10	36	13
Kentucky	2	4	10	119	183	—	0	2	8	9	—	1	7	35	26
Mississippi	1	3	13	142	159	—	0	2	15	13	—	0	2	9	11
Tennessee	9	15	28	474	517	—	1	4	29	28	3	2	11	81	44
W.S. Central	11	35	305	1,248	1,408	1	4	20	114	102	10	4	29	164	112
Arkansas	1	4	30	127	142	—	0	2	6	7	—	0	5	22	16
Louisiana	1	6	23	248	228	—	0	2	15	13	—	0	4	20	19
Oklahoma	—	0	0	—	—	—	0	2	18	13	—	0	4	9	3
Texas	9	26	263	873	1,038	1	2	18	75	69	10	3	24	113	74
Mountain	10	30	81	1,106	1,396	—	2	7	59	80	—	3	9	61	94
Arizona	2	13	40	504	567	—	1	6	26	30	—	1	4	24	39
Colorado	7	8	24	247	351	—	0	2	11	16	—	0	7	9	17
Idaho	N	0	0	N	N	—	0	1	2	3	—	0	2	5	5
Montana	1	0	4	24	19	—	0	0	—	1	—	0	1	2	8
Nevada	—	2	7	84	87	—	0	2	5	4	—	0	3	7	9
New Mexico	—	5	16	207	231	—	0	3	11	9	—	0	2	1	5
Utah	—	1	11	28	128	—	0	2	3	17	—	0	3	13	11
Wyoming	—	0	3	12	13	—	0	1	1	—	—	0	0	—	—
Pacific	1	3	8	111	108	—	0	3	12	15	4	5	12	170	156
Alaska	1	2	5	51	62	—	0	2	6	12	—	0	1	1	1
California	N	0	0	N	N	N	0	0	N	N	—	4	11	131	124
Hawaii	—	2	6	60	46	—	0	2	6	3	—	0	1	3	4
Oregon	N	0	0	N	N	N	0	0	N	N	—	0	2	14	10
Washington	N	0	0	N	N	N	0	0	N	N	4	0	6	21	17
Territories															
American Samoa	N	—	—	N	N	—	—	—	—	—	N	—	—	N	N
C.N.M.I.	—	—	—	—	—	—	—	—	—	—	—	—	—	—	—
Guam	—	0	2	—	12	—	0	0	—	—	—	0	0	—	—
Puerto Rico	—	0	0	—	—	—	0	0	—	—	—	0	1	1	11
U.S. Virgin Islands	—	0	0	—	—	—	0	0	—	—	—	0	0	—	—

C.N.M.I.: Commonwealth of Northern Mariana Islands.

U: Unavailable. —: No reported cases. N: Not reportable. NN: Not Nationally Notifiable. Cum: Cumulative year-to-date counts. Med: Median. Max: Maximum.

* Case counts for reporting year 2013 and 2014 are provisional and subject to change. For further information on interpretation of these data, see <http://www.cdc.gov/nndss/document/ProvisionalNationalNotifiableDiseasesSurveillanceData20100927.pdf>. Data for TB are displayed in Table IV, which appears quarterly.

† Includes drug resistant and susceptible cases of Invasive Pneumococcal Disease. This condition was previously named Streptococcus pneumoniae invasive disease and cases were reported to CDC using different event codes to specify whether the cases were drug resistant or in a defined age group, such as <5 years. Since 2010, case notifications for this condition were consolidated under one event code for Invasive pneumococcal disease.

Morbidity and Mortality Weekly Report

TABLE II. (Continued) Provisional cases of selected notifiable diseases, United States, weeks ending July 26, 2014, and July 27, 2013 (30th week)* (Export data)

Reporting area	Lyme disease					Malaria					Meningococcal disease, invasive† All serogroups				
	Current week	Previous 52 weeks		Cum 2014	Cum 2013	Current week	Previous 52 weeks		Cum 2014	Cum 2013	Current week	Previous 52 weeks		Cum 2014	Cum 2013
		Med	Max				Med	Max				Med	Max		
United States	500	420	2,007	11,134	19,782	13	25	51	694	850	1	8	24	251	362
New England	56	128	705	3,230	7,712	1	1	8	38	72	—	0	3	9	15
Connecticut	3	26	146	714	1,964	—	0	1	—	16	—	0	1	1	2
Maine	—	15	102	285	602	—	0	2	4	3	—	0	1	—	2
Massachusetts	12	55	245	1,543	3,441	—	1	4	25	44	—	0	3	7	5
New Hampshire	—	8	91	203	1,113	—	0	2	2	6	—	0	0	—	2
Rhode Island	28	9	54	269	237	—	0	8	6	—	—	0	1	1	1
Vermont	13	10	103	216	355	1	0	1	1	3	—	0	1	—	3
Mid. Atlantic	362	179	874	5,975	6,960	5	8	21	186	201	—	1	3	24	53
New Jersey	—	42	174	985	2,361	—	1	6	35	55	—	0	2	4	10
New York (Upstate)	186	49	244	1,311	1,231	3	1	5	30	28	—	0	3	5	14
New York City	1	3	441	490	347	1	3	13	87	78	—	0	2	8	12
Pennsylvania	175	61	454	3,189	3,021	1	1	4	34	40	—	0	2	7	17
E.N. Central	6	18	149	550	1,623	—	2	8	58	90	—	1	4	30	37
Illinois	—	1	27	73	245	—	1	5	16	45	—	0	2	10	6
Indiana	—	0	5	—	86	—	0	2	4	11	—	0	1	3	12
Michigan	—	2	16	34	62	—	0	2	10	12	—	0	1	7	3
Ohio	5	1	7	37	48	—	1	3	24	16	—	0	2	6	6
Wisconsin	1	14	95	406	1,182	—	0	2	4	6	—	0	1	4	10
W.N. Central	—	7	167	97	1,586	—	1	7	33	58	—	0	3	16	29
Iowa	—	1	12	78	187	—	0	2	6	4	—	0	1	1	1
Kansas	—	0	3	4	17	—	0	2	8	6	—	0	1	1	3
Minnesota	—	0	158	3	1,362	—	0	5	2	37	—	0	2	4	9
Missouri	—	0	1	4	—	—	0	1	9	1	—	0	2	7	6
Nebraska	—	0	3	3	4	—	0	1	1	3	—	0	1	—	3
North Dakota	—	0	4	5	13	—	0	1	5	2	—	0	1	1	3
South Dakota	—	0	1	—	3	—	0	3	2	5	—	0	1	2	4
S. Atlantic	70	46	309	1,124	1,678	4	7	18	232	230	—	1	6	60	67
Delaware	6	8	24	228	276	—	0	1	2	5	—	0	1	1	2
District of Columbia	N	0	0	N	N	—	0	2	3	11	—	0	0	—	—
Florida	4	2	14	42	46	2	1	3	29	32	—	1	3	27	35
Georgia	—	0	3	3	5	—	1	5	47	38	—	0	2	10	8
Maryland	25	16	81	431	696	—	3	10	87	81	—	0	1	4	3
North Carolina	—	0	27	43	72	—	0	7	19	14	—	0	3	11	10
South Carolina	—	1	5	14	12	—	0	1	2	7	—	0	1	2	2
Virginia	32	13	267	319	484	2	1	5	41	41	—	0	2	5	5
West Virginia	3	1	8	44	87	—	0	1	2	1	—	0	0	—	2
E.S. Central	3	2	10	75	36	2	1	4	26	22	—	0	2	10	8
Alabama	1	0	6	31	12	—	0	1	6	2	—	0	1	3	1
Kentucky	1	0	9	27	15	—	0	2	8	7	—	0	1	2	1
Mississippi	—	0	0	—	—	—	0	1	1	1	—	0	1	1	3
Tennessee	1	0	4	17	9	2	0	1	11	12	—	0	1	4	3
W.S. Central	1	0	13	8	41	1	1	21	40	55	—	1	6	26	37
Arkansas	—	0	0	—	—	—	0	1	2	1	—	0	1	1	5
Louisiana	—	0	1	1	—	—	0	1	3	5	—	0	2	5	8
Oklahoma	—	0	2	—	1	—	0	2	2	7	—	0	2	7	5
Texas	1	0	11	7	40	1	1	19	33	42	—	0	5	13	19
Mountain	1	1	7	22	50	—	1	4	24	53	—	0	2	14	28
Arizona	—	0	3	4	9	—	0	3	9	22	—	0	2	3	10
Colorado	—	0	0	—	—	—	0	3	6	19	—	0	1	1	5
Idaho	—	0	1	7	10	—	0	1	1	3	—	0	1	2	4
Montana	1	0	2	6	11	—	0	1	1	—	—	0	1	3	—
Nevada	—	0	1	3	4	—	0	1	5	5	—	0	1	2	1
New Mexico	—	0	1	—	3	—	0	1	1	—	—	0	1	2	1
Utah	—	0	2	2	12	—	0	1	1	4	—	0	1	1	6
Wyoming	—	0	1	—	1	—	0	0	—	—	—	0	1	—	1
Pacific	1	2	10	53	96	—	3	9	57	69	1	2	7	62	88
Alaska	—	0	3	12	5	—	0	1	1	2	—	0	0	—	—
California	—	0	8	4	61	—	2	5	33	49	—	1	5	40	70
Hawaii	N	0	0	N	N	—	0	0	—	1	—	0	1	1	1
Oregon	1	1	4	37	25	—	0	1	7	5	1	0	3	13	9
Washington	—	0	4	—	5	—	0	3	16	12	—	0	5	8	8
Territories															
American Samoa	N	—	—	N	N	—	—	—	—	—	—	—	—	—	—
C.N.M.I.	—	—	—	—	—	—	—	—	—	—	—	—	—	—	—
Guam	—	0	0	—	—	—	0	0	—	—	—	0	0	—	1
Puerto Rico	N	0	0	N	N	—	0	1	1	—	—	0	1	1	1
U.S. Virgin Islands	N	0	0	N	N	—	0	0	—	—	—	0	0	—	—

C.N.M.I.: Commonwealth of Northern Mariana Islands.

U: Unavailable. —: No reported cases. N: Not reportable. NN: Not Nationally Notifiable. Cum: Cumulative year-to-date counts. Med: Median. Max: Maximum.

* Case counts for reporting year 2013 and 2014 are provisional and subject to change. For further information on interpretation of these data, see <http://www.cdc.gov/nndss/document/ProvisionalNationalNotifiableDiseasesSurveillanceData20100927.pdf>. Data for TB are displayed in Table IV, which appears quarterly.

† Data for meningococcal disease, invasive caused by serogroups A, C, Y, and W-135; serogroup B; other serogroup; and unknown serogroup are available in Table I.

Morbidity and Mortality Weekly Report

TABLE II. (Continued) Provisional cases of selected notifiable diseases, United States, weeks ending July 26, 2014, and July 27, 2013 (30th week)* (Export data)

Reporting area	Mumps					Pertussis					Rabies, animal				
	Current week	Previous 52 weeks		Cum 2014	Cum 2013	Current week	Previous 52 weeks		Cum 2014	Cum 2013	Current week	Previous 52 weeks		Cum 2014	Cum 2013
		Med	Max				Med	Max				Med	Max		
United States	8	9	117	938	403	262	572	1,036	14,760	14,515	27	58	137	1,385	2,038
New England	—	0	2	5	67	11	15	37	473	711	5	5	13	135	172
Connecticut	—	0	0	—	4	—	1	6	16	25	3	2	12	68	73
Maine	—	0	0	—	1	11	5	27	240	202	—	1	3	20	30
Massachusetts	—	0	2	5	60	—	4	13	92	224	—	0	0	—	—
New Hampshire	—	0	0	—	1	—	1	3	29	100	—	0	2	6	21
Rhode Island	—	0	1	—	—	—	2	23	67	55	—	0	4	12	15
Vermont	—	0	0	—	1	—	0	5	29	105	2	1	4	29	33
Mid. Atlantic	1	2	25	139	41	28	33	63	908	1,057	7	10	33	184	398
New Jersey	—	1	20	27	4	—	6	12	134	241	—	0	0	—	—
New York (Upstate)	1	0	2	7	4	20	13	40	378	381	7	6	19	184	182
New York City	—	1	24	98	18	—	2	10	30	56	—	0	5	—	22
Pennsylvania	—	0	2	7	15	8	12	25	366	379	—	0	12	—	194
E.N. Central	5	3	107	709	37	40	96	200	2,359	2,222	3	1	24	34	56
Illinois	—	1	15	109	21	—	11	35	231	397	1	0	6	10	18
Indiana	—	0	3	20	2	—	9	29	204	231	—	0	1	—	5
Michigan	—	0	1	7	4	3	20	44	527	414	—	0	5	15	19
Ohio	5	1	97	516	9	36	28	104	903	518	2	0	19	9	14
Wisconsin	—	0	10	57	1	1	22	54	494	662	N	0	0	N	N
W.N. Central	1	0	6	15	7	3	40	95	860	1,188	4	2	11	56	143
Iowa	—	0	1	2	1	—	3	13	70	198	—	0	0	—	—
Kansas	—	0	1	1	—	—	8	22	131	150	—	1	4	25	38
Minnesota	—	0	6	10	2	—	14	28	266	446	—	0	4	—	33
Missouri	1	0	2	2	3	3	10	33	225	211	2	0	3	17	25
Nebraska	—	0	0	—	—	—	3	15	71	117	—	0	2	2	28
North Dakota	—	0	0	—	1	—	1	8	23	44	—	0	0	—	—
South Dakota	—	0	0	—	—	—	2	10	74	22	2	0	2	12	19
S. Atlantic	1	0	9	35	199	38	56	100	1,696	1,303	1	9	23	234	547
Delaware	—	0	0	—	—	—	1	35	199	21	—	0	0	—	—
District of Columbia	—	0	4	16	1	—	0	4	10	26	—	0	0	—	—
Florida	1	0	0	1	1	16	16	63	500	333	—	0	20	45	103
Georgia	—	0	4	4	1	—	6	19	183	193	—	0	11	—	192
Maryland	—	0	1	—	86	1	3	10	60	115	—	6	17	164	211
North Carolina	—	0	1	1	2	15	11	43	398	297	—	0	0	—	—
South Carolina	—	0	1	—	1	—	3	9	72	125	—	0	0	—	—
Virginia	—	0	8	13	107	6	9	30	265	185	—	0	0	—	—
West Virginia	—	0	0	—	—	—	0	3	9	8	1	1	5	25	41
E.S. Central	—	0	3	7	7	11	17	40	527	467	—	1	5	24	25
Alabama	—	0	1	2	2	3	4	13	139	111	—	1	5	20	16
Kentucky	—	0	1	1	2	—	7	28	180	180	—	0	2	4	8
Mississippi	—	0	0	—	—	—	1	5	49	35	—	0	1	—	1
Tennessee	—	0	3	4	3	8	5	10	159	141	—	0	0	—	—
W.S. Central	—	0	3	10	11	53	73	499	1,600	1,899	7	23	78	582	555
Arkansas	—	0	1	1	2	3	8	30	180	225	—	1	23	103	102
Louisiana	—	0	1	—	1	—	2	11	41	129	—	0	1	—	4
Oklahoma	—	0	1	2	1	1	0	112	70	38	1	0	31	70	35
Texas	—	0	3	7	7	49	58	353	1,309	1,507	6	18	72	409	414
Mountain	—	0	2	7	6	56	86	143	2,146	3,656	—	1	11	15	26
Arizona	—	0	1	5	1	—	9	42	128	1,065	N	0	0	N	N
Colorado	—	0	1	1	2	32	25	63	735	773	—	0	0	—	—
Idaho	—	0	0	—	—	2	6	23	225	116	—	0	4	—	10
Montana	—	0	0	—	—	22	8	25	240	444	N	0	0	N	N
Nevada	—	0	2	1	1	—	3	12	78	89	—	0	3	4	6
New Mexico	—	0	1	—	—	—	9	24	184	341	—	0	2	3	6
Utah	—	0	0	—	2	—	21	41	518	802	—	0	4	8	1
Wyoming	—	0	0	—	—	—	1	12	38	26	—	0	2	—	3
Pacific	—	0	2	11	28	22	77	313	4,191	2,012	—	4	14	121	116
Alaska	—	0	1	1	—	1	2	10	35	241	—	0	1	3	7
California	—	0	2	8	24	—	60	263	3,693	1,003	—	4	14	118	102
Hawaii	—	0	0	—	—	—	1	4	24	27	—	0	0	—	—
Oregon	—	0	1	1	3	1	8	21	236	311	—	0	1	—	7
Washington	—	0	1	1	1	20	8	50	203	430	—	0	12	—	—
Territories															
American Samoa	—	—	—	—	—	—	—	—	—	—	N	—	—	N	N
C.N.M.I.	—	—	—	—	—	—	—	—	—	—	—	—	—	—	—
Guam	—	0	1	—	6	—	0	0	—	—	—	0	0	—	—
Puerto Rico	—	0	1	—	2	—	0	2	7	21	—	1	5	27	36
U.S. Virgin Islands	—	0	0	—	—	—	0	0	—	—	—	0	0	—	—

C.N.M.I.: Commonwealth of Northern Mariana Islands.

U: Unavailable. —: No reported cases. N: Not reportable. NN: Not Nationally Notifiable. Cum: Cumulative year-to-date counts. Med: Median. Max: Maximum.

* Case counts for reporting year 2013 and 2014 are provisional and subject to change. For further information on interpretation of these data, see <http://www.cdc.gov/nndss/document/ProvisionalNationalNotifiableDiseasesSurveillanceData20100927.pdf>. Data for TB are displayed in Table IV, which appears quarterly.

Morbidity and Mortality Weekly Report

TABLE II. (Continued) Provisional cases of selected notifiable diseases, United States, weeks ending July 26, 2014, and July 27, 2013 (30th week)* (Export data)

Reporting area	Salmonellosis					Shiga toxin-producing <i>E. coli</i> (STEC) [†]					Shigellosis				
	Current week	Previous 52 weeks		Cum 2014	Cum 2013	Current week	Previous 52 weeks		Cum 2014	Cum 2013	Current week	Previous 52 weeks		Cum 2014	Cum 2013
		Med	Max				Med	Max				Med	Max		
United States	685	861	1,620	20,294	24,067	84	93	297	2,307	3,359	205	311	741	8,904	5,134
New England	21	33	71	1,003	1,223	5	4	11	95	135	4	5	94	146	183
Connecticut	1	7	21	221	243	—	1	7	25	31	—	1	5	24	24
Maine	—	2	5	69	85	1	0	3	11	16	—	0	2	9	3
Massachusetts	15	17	40	518	700	3	2	6	44	62	1	3	10	84	81
New Hampshire	—	3	12	83	96	—	0	2	5	17	—	0	2	9	5
Rhode Island	4	2	13	62	53	—	0	2	2	—	3	0	86	19	67
Vermont	1	1	6	50	46	1	0	3	8	9	—	0	1	1	3
Mid. Atlantic	90	80	195	2,074	2,697	10	10	34	223	362	9	15	37	386	459
New Jersey	—	14	46	335	572	—	1	7	28	82	—	2	7	54	76
New York (Upstate)	48	22	76	653	635	9	4	10	84	106	1	4	29	107	139
New York City	22	18	50	481	589	1	1	5	34	54	8	6	13	163	168
Pennsylvania	20	23	58	605	901	—	4	17	77	120	—	2	7	62	76
E.N. Central	34	91	167	2,467	3,115	4	12	49	292	576	31	25	108	1,308	846
Illinois	—	29	65	774	996	—	3	17	53	173	—	6	32	229	161
Indiana	—	11	26	297	396	—	2	7	39	69	—	3	47	458	61
Michigan	4	17	42	451	534	—	3	14	64	99	3	2	19	122	103
Ohio	30	22	47	673	655	4	4	15	94	103	22	10	22	352	498
Wisconsin	—	12	29	272	534	—	2	13	42	132	6	1	17	147	23
W.N. Central	30	37	120	940	1,814	5	11	48	287	561	31	28	80	989	224
Iowa	3	8	21	227	339	—	2	13	82	103	—	6	45	118	48
Kansas	3	7	18	191	235	—	1	7	53	51	—	0	4	20	25
Minnesota	—	0	54	—	441	—	0	17	—	163	—	0	6	—	75
Missouri	24	16	37	374	454	5	4	15	111	148	31	3	61	466	28
Nebraska	—	3	20	33	168	—	0	7	14	47	—	0	5	20	33
North Dakota	—	1	4	44	68	—	0	3	15	28	—	0	2	13	10
South Dakota	—	2	10	71	109	—	0	5	12	21	—	9	32	352	5
S. Atlantic	276	229	478	5,412	5,858	4	10	18	269	303	53	74	163	2,583	1,001
Delaware	—	2	7	50	55	—	0	2	5	7	—	1	4	35	3
District of Columbia	—	0	3	18	34	—	0	1	3	4	—	0	4	30	12
Florida	182	115	228	2,593	2,552	2	2	8	75	69	39	39	96	1,507	366
Georgia	37	31	100	819	948	—	2	7	60	73	5	19	34	472	378
Maryland	22	13	33	382	446	1	1	8	39	30	5	3	11	124	50
North Carolina	—	24	136	528	758	—	1	5	19	40	—	4	119	266	83
South Carolina	27	20	60	482	468	—	0	2	7	3	4	2	6	68	63
Virginia	6	19	41	449	484	—	2	8	43	59	—	3	8	80	44
West Virginia	2	3	10	91	113	1	0	3	18	18	—	0	2	1	2
E.S. Central	30	57	150	1,566	1,559	8	5	14	156	196	10	31	66	864	399
Alabama	3	19	80	519	426	—	0	4	23	33	1	6	13	154	154
Kentucky	—	9	27	278	286	3	1	7	42	60	—	1	15	90	30
Mississippi	11	12	40	327	393	—	0	3	14	20	—	5	12	134	86
Tennessee	16	15	33	442	454	5	2	9	77	83	9	17	50	486	129
W.S. Central	137	140	724	2,729	2,900	18	17	50	454	353	57	68	463	1,800	1,220
Arkansas	14	14	36	260	252	2	2	6	60	45	9	8	198	671	121
Louisiana	8	23	47	478	602	—	0	3	6	8	1	5	29	94	181
Oklahoma	18	14	151	383	300	—	2	10	64	45	—	1	41	25	110
Texas	97	86	543	1,608	1,746	16	12	40	324	255	47	47	393	1,010	808
Mountain	19	49	260	1,246	1,698	6	8	69	191	370	5	13	43	288	258
Arizona	2	17	34	377	476	—	1	45	32	84	1	6	29	121	156
Colorado	14	10	35	298	365	3	1	10	26	103	3	2	12	43	34
Idaho	3	3	9	83	60	2	2	6	41	42	—	0	3	8	6
Montana	—	2	6	66	50	—	1	5	20	25	—	0	10	8	11
Nevada	—	3	205	69	318	—	1	5	18	34	—	0	7	16	17
New Mexico	—	5	19	118	208	—	0	6	23	20	—	1	5	22	19
Utah	—	6	16	209	183	1	1	9	28	53	1	1	2	17	12
Wyoming	—	1	7	26	38	—	0	8	3	9	—	0	6	53	3
Pacific	48	117	224	2,857	3,203	24	14	55	340	503	5	23	54	540	544
Alaska	2	1	7	50	45	—	0	0	—	—	—	0	1	3	1
California	—	91	177	2,185	2,433	—	8	36	185	305	—	20	54	419	434
Hawaii	5	6	13	139	183	—	0	2	4	18	—	0	2	11	29
Oregon	3	6	25	181	196	5	2	14	70	75	—	1	5	21	26
Washington	38	10	47	302	346	19	3	31	81	105	5	2	12	86	54
Territories															
American Samoa	—	—	—	—	—	—	—	—	—	—	—	—	—	—	—
C.N.M.I.	—	—	—	—	—	—	—	—	—	—	—	—	—	—	—
Guam	—	0	2	—	10	—	1	4	—	54	—	0	1	—	5
Puerto Rico	—	8	39	231	309	—	0	2	4	3	—	0	1	3	2
U.S. Virgin Islands	—	0	0	—	—	—	0	0	—	—	—	0	0	—	—

C.N.M.I.: Commonwealth of Northern Mariana Islands.

U: Unavailable. —: No reported cases. N: Not reportable. NN: Not Nationally Notifiable. Cum: Cumulative year-to-date counts. Med: Median. Max: Maximum.

* Case counts for reporting year 2013 and 2014 are provisional and subject to change. For further information on interpretation of these data, see <http://www.cdc.gov/nndss/document/ProvisionalNationalNotifiableDiseasesSurveillanceData20100927.pdf>. Data for TB are displayed in Table IV, which appears quarterly.

† Includes *E. coli* O157:H7; Shiga toxin-positive, serogroup non-O157; and Shiga toxin-positive, not serogrouped.

Morbidity and Mortality Weekly Report

TABLE II. (Continued) Provisional cases of selected notifiable diseases, United States, weeks ending July 26, 2014, and July 27, 2013 (30th week)* (Export data)

Reporting area	Spotted Fever Rickettsiosis (including RMSF) [†]										Syphilis, primary and secondary				
	Confirmed					Probable					Current week	Previous 52 weeks		Cum 2014	Cum 2013
	Current week	Previous 52 weeks		Cum 2014	Cum 2013	Current week	Previous 52 weeks		Cum 2014	Cum 2013		Med	Max		
United States	1	2	10	53	96	64	57	210	1,530	1,458	97	337	478	9,270	9,497
New England	—	0	1	—	1	—	0	1	4	7	2	10	19	274	276
Connecticut	—	0	0	—	—	—	0	0	—	—	—	1	5	44	34
Maine	—	0	0	—	—	—	0	1	2	1	—	0	4	6	8
Massachusetts	—	0	0	—	—	—	0	1	1	1	2	7	14	173	197
New Hampshire	—	0	1	—	1	—	0	1	1	3	—	0	2	12	17
Rhode Island	—	0	0	—	—	—	0	0	—	2	—	1	5	37	18
Vermont	—	0	0	—	—	—	0	0	—	—	—	0	1	2	2
Mid. Atlantic	—	0	1	2	1	2	1	7	39	41	8	44	73	1,244	1,207
New Jersey	—	0	1	—	1	—	1	3	25	24	—	4	9	115	138
New York (Upstate)	—	0	1	1	—	—	0	6	6	4	6	5	48	210	146
New York City	—	0	1	—	—	2	0	1	4	2	—	23	37	663	666
Pennsylvania	—	0	1	1	—	—	0	1	4	11	2	8	20	256	257
E.N. Central	—	0	2	3	3	1	1	11	50	90	—	32	58	762	1,186
Illinois	—	0	1	1	2	—	1	7	36	58	—	11	27	252	496
Indiana	—	0	2	2	—	—	0	2	2	13	—	3	8	90	141
Michigan	—	0	0	—	—	—	0	1	1	1	—	8	17	151	259
Ohio	—	0	1	—	—	1	0	2	9	13	—	8	17	230	239
Wisconsin	—	0	0	—	1	—	0	1	2	5	—	1	5	39	51
W.N. Central	—	0	2	5	4	11	3	16	146	169	1	15	30	417	351
Iowa	—	0	0	—	—	—	0	2	4	5	1	1	7	21	46
Kansas	—	0	0	—	—	—	0	0	—	—	—	1	3	31	25
Minnesota	—	0	1	—	—	—	0	1	—	9	—	4	10	127	91
Missouri	—	0	1	4	1	11	3	16	142	146	—	5	11	175	143
Nebraska	—	0	1	—	3	—	0	1	—	5	—	1	3	30	26
North Dakota	—	0	1	1	—	—	0	0	—	2	—	0	2	7	6
South Dakota	—	0	1	—	—	—	0	1	—	2	—	1	6	26	14
S. Atlantic	1	1	9	29	69	9	13	57	382	374	52	88	215	2,493	2,022
Delaware	—	0	0	—	—	1	0	2	13	11	2	1	6	22	20
District of Columbia	—	0	1	—	2	—	0	0	—	1	—	0	8	—	101
Florida	1	0	2	1	1	1	0	3	19	7	2	31	45	907	788
Georgia	—	1	4	20	57	—	0	0	—	—	17	22	151	667	400
Maryland	—	0	1	1	—	—	0	2	9	6	—	9	16	226	232
North Carolina	—	0	2	3	5	—	6	34	173	143	15	12	29	349	143
South Carolina	—	0	1	—	—	—	1	5	16	29	—	4	13	129	164
Virginia	—	0	1	4	3	7	4	22	149	176	16	6	18	179	166
West Virginia	—	0	0	—	1	—	0	2	3	1	—	0	2	14	8
E.S. Central	—	0	3	11	8	20	13	50	453	482	3	11	29	286	337
Alabama	—	0	1	3	1	6	4	19	109	104	—	3	8	52	99
Kentucky	—	0	1	—	1	1	1	5	26	36	2	2	8	76	67
Mississippi	—	0	1	2	1	—	0	3	2	25	—	1	26	68	48
Tennessee	—	0	2	6	5	13	7	41	316	317	1	4	9	90	123
W.S. Central	—	0	4	2	4	21	13	123	441	247	26	41	69	1,182	1,242
Arkansas	—	0	2	—	3	5	10	42	299	196	—	3	9	62	104
Louisiana	—	0	0	—	—	—	0	1	3	2	—	9	22	181	191
Oklahoma	—	0	4	2	—	14	0	87	81	21	3	2	7	68	68
Texas	—	0	0	—	1	2	2	16	58	28	23	28	47	871	879
Mountain	—	0	1	—	6	—	1	4	8	41	1	17	31	548	461
Arizona	—	0	1	—	5	—	0	3	4	31	—	7	12	205	150
Colorado	—	0	0	—	—	—	0	1	—	5	1	3	9	70	94
Idaho	—	0	0	—	1	—	0	0	—	—	—	0	2	3	8
Montana	—	0	0	—	—	—	0	1	2	1	—	0	2	5	4
Nevada	—	0	0	—	—	—	0	1	1	1	—	5	20	196	99
New Mexico	—	0	1	—	—	—	0	1	1	1	—	2	5	57	53
Utah	—	0	0	—	—	—	0	1	—	2	—	0	3	12	52
Wyoming	—	0	0	—	—	—	0	1	—	—	—	0	0	—	1
Pacific	—	0	1	1	—	—	0	2	7	7	4	78	99	2,064	2,415
Alaska	N	0	0	N	N	N	0	0	N	N	1	0	3	12	15
California	—	0	1	1	—	—	0	1	4	7	—	66	88	1,811	2,065
Hawaii	N	0	0	N	N	N	0	0	N	N	—	1	5	29	25
Oregon	—	0	1	—	—	—	0	1	3	—	2	5	11	132	161
Washington	—	0	0	—	—	—	0	2	—	—	1	4	11	80	149
Territories															
American Samoa	N	—	—	N	N	N	—	—	N	N	—	—	—	—	—
C.N.M.I.	—	—	—	—	—	—	—	—	—	—	—	—	—	—	—
Guam	N	0	0	N	N	N	0	0	N	N	—	0	0	—	—
Puerto Rico	N	0	0	N	N	N	0	0	N	N	—	7	29	257	233
U.S. Virgin Islands	N	0	0	N	N	N	0	0	N	N	—	0	0	—	1

C.N.M.I.: Commonwealth of Northern Mariana Islands.

U: Unavailable. —: No reported cases. N: Not reportable. NN: Not Nationally Notifiable. Cum: Cumulative year-to-date counts. Med: Median. Max: Maximum.

* Case counts for reporting year 2013 and 2014 are provisional and subject to change. For further information on interpretation of these data, see <http://www.cdc.gov/nndss/document/ProvisionalNationalNotifiableDiseasesSurveillanceData20100927.pdf>. Data for TB are displayed in Table IV, which appears quarterly.

† Illnesses with similar clinical presentation that result from Spotted fever group rickettsia infections are reported as Spotted fever rickettsioses. Rocky Mountain spotted fever (RMSF) caused by *Rickettsia rickettsii*, is the most common and well-known spotted fever.

Morbidity and Mortality Weekly Report

TABLE II. (Continued) Provisional cases of selected notifiable diseases, United States, weeks ending July 26, 2014, and July 27, 2013 (30th week)* (Export data)

Reporting area	Varicella (chickenpox)					West Nile virus disease [†]									
	Current week	Previous 52 weeks		Cum 2014	Cum 2013	Neuroinvasive					Nonneuroinvasive [§]				
		Med	Max			Current week	Previous 52 weeks	Cum 2014	Cum 2013	Current week	Previous 52 weeks	Cum 2014	Cum 2013		
United States	84	196	294	5,026	6,536	1	1	164	25	153	—	1	164	29	179
New England	4	19	49	557	635	—	0	3	—	—	—	0	2	—	—
Connecticut	1	4	9	100	134	—	0	1	—	—	—	0	1	—	—
Maine	1	2	10	93	89	—	0	0	—	—	—	0	0	—	—
Massachusetts	1	9	20	253	292	—	0	2	—	—	—	0	1	—	—
New Hampshire	—	0	8	—	55	—	0	1	—	—	—	0	0	—	—
Rhode Island	—	0	4	22	19	—	0	1	—	—	—	0	0	—	—
Vermont	1	1	27	89	46	—	0	1	—	—	—	0	1	—	—
Mid. Atlantic	10	19	34	559	760	—	0	7	—	3	—	0	6	1	1
New Jersey	—	4	16	99	292	—	0	4	—	—	—	0	2	—	—
New York (Upstate)	N	0	0	N	N	—	0	2	—	—	—	0	4	1	—
New York City	—	0	0	—	—	—	0	2	—	2	—	0	1	—	1
Pennsylvania	10	15	26	460	468	—	0	1	—	1	—	0	1	—	—
E.N. Central	18	57	92	1,448	1,494	—	0	26	—	5	—	0	14	1	4
Illinois	1	13	27	353	390	—	0	21	—	1	—	0	8	—	—
Indiana	—	7	22	208	144	—	0	6	—	1	—	0	1	—	—
Michigan	—	11	39	336	370	—	0	5	—	1	—	0	4	—	3
Ohio	13	11	26	311	382	—	0	3	—	—	—	0	2	—	—
Wisconsin	4	7	25	240	208	—	0	3	—	2	—	0	1	1	1
W.N. Central	2	10	34	139	731	—	0	51	2	41	—	0	68	15	68
Iowa	N	0	0	N	N	—	0	10	—	1	—	0	5	3	4
Kansas	—	0	15	—	294	—	0	8	—	2	—	0	16	—	1
Minnesota	—	0	16	5	292	—	0	7	—	7	—	0	8	—	12
Missouri	2	4	16	107	107	—	0	5	1	—	—	0	1	—	—
Nebraska	—	0	3	5	2	—	0	14	1	3	—	0	29	3	14
North Dakota	—	0	4	9	16	—	0	12	—	14	—	0	9	—	12
South Dakota	—	0	3	13	20	—	0	10	—	14	—	0	12	9	25
S. Atlantic	8	24	54	663	848	—	0	9	1	1	—	0	3	—	5
Delaware	—	0	2	7	17	—	0	1	—	—	—	0	0	—	—
District of Columbia	—	0	0	—	10	—	0	0	—	—	—	0	1	—	1
Florida	7	11	28	336	405	—	0	1	—	—	—	0	1	—	—
Georgia	—	0	10	19	37	—	0	2	1	1	—	0	1	—	2
Maryland	N	0	0	N	N	—	0	3	—	—	—	0	2	—	—
North Carolina	—	0	0	—	—	—	0	2	—	—	—	0	0	—	—
South Carolina	1	2	10	83	107	—	0	1	—	—	—	0	1	—	2
Virginia	—	6	17	144	206	—	0	2	—	—	—	0	0	—	—
West Virginia	—	2	8	74	66	—	0	1	—	—	—	0	0	—	—
E.S. Central	—	2	8	64	105	—	0	7	2	5	—	0	7	1	11
Alabama	—	2	8	63	101	—	0	1	—	—	—	0	3	—	2
Kentucky	N	0	0	N	N	—	0	1	—	—	—	0	1	—	1
Mississippi	—	0	1	1	4	—	0	5	1	3	—	0	2	1	8
Tennessee	N	0	0	N	N	—	0	3	1	2	—	0	2	—	—
W.S. Central	27	36	107	992	1,295	1	0	29	4	11	—	0	17	3	13
Arkansas	—	3	17	54	112	—	0	3	—	—	—	0	1	—	—
Louisiana	—	0	4	19	46	1	0	7	3	2	—	0	3	2	4
Oklahoma	N	0	0	N	N	—	0	9	1	—	—	0	7	—	1
Texas	27	31	98	919	1,137	—	0	16	—	9	—	0	12	1	8
Mountain	14	20	52	534	608	—	0	32	4	34	—	0	53	5	45
Arizona	4	5	22	192	203	—	0	7	4	16	—	0	2	—	5
Colorado	9	5	27	152	165	—	0	17	—	10	—	0	34	5	30
Idaho	N	0	0	N	N	—	0	5	—	1	—	0	7	—	3
Montana	1	1	5	43	59	—	0	5	—	—	—	0	7	—	—
Nevada	N	0	0	N	N	—	0	1	—	5	—	0	1	—	2
New Mexico	—	1	5	29	40	—	0	4	—	1	—	0	3	—	2
Utah	—	4	11	115	135	—	0	1	—	—	—	0	1	—	1
Wyoming	—	0	1	3	6	—	0	4	—	1	—	0	6	—	2
Pacific	1	3	6	70	60	—	0	27	12	53	—	0	19	3	32
Alaska	—	1	6	31	23	—	0	0	—	—	—	0	0	—	—
California	—	0	3	13	21	—	0	25	12	52	—	0	18	3	28
Hawaii	1	1	3	26	16	—	0	0	—	—	—	0	0	—	—
Oregon	N	0	0	N	N	—	0	2	—	1	—	0	3	—	3
Washington	N	0	0	N	N	—	0	0	—	—	—	0	0	—	1
Territories															
American Samoa	N	—	—	N	N	—	—	—	—	—	—	—	—	—	—
C.N.M.I.	—	—	—	—	—	—	—	—	—	—	—	—	—	—	—
Guam	—	0	2	—	48	—	0	0	—	—	—	0	0	—	—
Puerto Rico	—	4	14	129	180	—	0	0	—	—	—	0	0	—	—
U.S. Virgin Islands	—	0	0	—	—	—	0	0	—	—	—	0	0	—	—

C.N.M.I.: Commonwealth of Northern Mariana Islands.

U: Unavailable. —: No reported cases. N: Not reportable. NN: Not Nationally Notifiable. Cum: Cumulative year-to-date counts. Med: Median. Max: Maximum.

* Case counts for reporting year 2013 and 2014 are provisional and subject to change. For further information on interpretation of these data, see <http://www.cdc.gov/nndss/document/ProvisionalNationalNotifiableDiseasesSurveillanceData20100927.pdf>. Data for TB are displayed in Table IV, which appears quarterly.

† Updated weekly from reports to the Division of Vector-Borne Infectious Diseases, National Center for Zoonotic, Vector-Borne, and Enteric Diseases (ArboNET Surveillance). Data for California serogroup, eastern equine, Powassan, St. Louis, and western equine diseases are available in Table I.

§ Not reportable in all states. Data from states where the condition is not reportable are excluded from this table, except starting in 2007 for the domestic arboviral diseases and influenza-associated pediatric mortality, and in 2003 for SARS-CoV. Reporting exceptions are available at http://www.cdc.gov/nndss/document/SRCA_FINAL_REPORT_2006-2012_final.xlsx.

Morbidity and Mortality Weekly Report

TABLE III. Deaths in 122 U.S. cities,* week ending July 26, 2014 (30th week) (Export data)

Reporting area	All causes, by age (years)						P&I†	Total	Reporting area (Continued)	All causes, by age (years)						P&I†	Total
	All Ages	≥65	45-64	25-44	1-24	<1				All Ages	≥65	45-64	25-44	1-24	<1		
New England	508	355	108	32	6	7	39	S. Atlantic	1,124	701	289	74	25	35	74		
Boston, MA	121	73	31	10	3	4	11	Atlanta, GA	80	47	23	7	2	1	5		
Bridgeport, CT	40	31	6	3	—	—	5	Baltimore, MD	170	88	59	13	5	5	7		
Cambridge, MA	10	9	1	—	—	—	—	Charlotte, NC	154	104	32	13	—	5	7		
Fall River, MA	30	24	6	—	—	—	3	Jacksonville, FL	166	111	39	8	4	4	10		
Hartford, CT	52	33	13	5	1	—	4	Miami, FL	69	52	12	3	2	—	6		
Lowell, MA	22	19	2	1	—	—	2	Norfolk, VA	61	34	13	7	3	4	6		
Lynn, MA	4	3	1	—	—	—	—	Richmond, VA	53	30	16	5	1	1	1		
New Bedford, MA	22	16	5	1	—	—	1	Savannah, GA	59	37	15	4	—	3	4		
New Haven, CT	33	20	7	5	1	—	2	St. Petersburg, FL	59	39	14	4	1	1	8		
Providence, RI	56	40	11	2	1	2	2	Tampa, FL	114	80	23	8	—	3	10		
Somerville, MA	3	2	1	—	—	—	—	Washington, D.C.	132	75	40	2	7	8	10		
Springfield, MA	31	22	9	—	—	—	2	Wilmington, DE	7	4	3	—	—	—	—		
Waterbury, CT	28	23	3	1	—	1	1	E.S. Central	878	548	239	56	19	16	56		
Worcester, MA	56	40	12	4	—	—	6	Birmingham, AL	162	112	38	6	4	2	12		
Mid. Atlantic	1,755	1,278	341	83	25	28	78	Chattanooga, TN	119	76	32	10	1	—	7		
Albany, NY	38	26	9	2	1	—	2	Knoxville, TN	150	92	41	12	4	1	7		
Allentown, PA	28	22	5	—	—	1	1	Lexington, KY	66	37	23	6	—	—	1		
Buffalo, NY	82	52	22	5	1	2	4	Memphis, TN	180	105	51	11	5	8	19		
Camden, NJ	30	15	10	2	1	2	—	Mobile, AL	87	51	27	5	3	1	5		
Elizabeth, NJ	11	7	3	1	—	—	1	Montgomery, AL	63	44	13	2	1	3	2		
Erie, PA	43	28	8	3	1	3	2	Nashville, TN	51	31	14	4	1	1	3		
Jersey City, NJ	14	8	2	2	2	—	1	W.S. Central	1,612	1,073	366	109	33	31	76		
New York City, NY	1,128	811	232	54	15	16	41	Austin, TX	90	56	23	7	2	2	4		
Newark, NJ	18	13	3	1	1	—	1	Baton Rouge, LA	93	69	18	5	1	—	3		
Paterson, NJ	14	8	3	3	—	—	—	Corpus Christi, TX	54	39	14	—	1	—	7		
Philadelphia, PA	U	U	U	U	U	U	U	Dallas, TX	193	102	55	21	7	8	8		
Pittsburgh, PA [§]	33	27	4	2	—	—	3	El Paso, TX	112	79	19	8	4	2	6		
Reading, PA	33	31	2	—	—	—	4	Fort Worth, TX	U	U	U	U	U	U	U		
Rochester, NY	124	105	15	1	2	1	9	Houston, TX	441	309	95	23	7	7	13		
Schenectady, NY	15	12	3	—	—	—	1	Little Rock, AR	60	43	8	5	1	3	2		
Scranton, PA	39	33	4	2	—	—	2	New Orleans, LA	47	29	11	5	1	1	2		
Syracuse, NY	63	49	8	2	1	3	5	San Antonio, TX	286	198	60	19	4	5	18		
Trenton, NJ	12	8	3	1	—	—	—	Shreveport, LA	78	47	21	7	2	1	4		
Utica, NY	15	11	2	2	—	—	1	Tulsa, OK	158	102	42	9	3	2	9		
Yonkers, NY	15	12	3	—	—	—	—	Mountain	1,226	855	252	79	21	16	70		
E.N. Central	1,977	1,283	484	128	40	42	95	Albuquerque, NM	116	77	31	6	1	1	7		
Akron, OH	54	32	13	7	1	1	3	Boise, ID	68	55	8	3	1	1	6		
Canton, OH	22	17	4	1	—	—	4	Colorado Springs, CO	89	58	20	8	3	—	5		
Chicago, IL	251	154	67	21	6	3	3	Denver, CO	77	45	26	4	1	1	4		
Cincinnati, OH	108	62	32	4	3	7	2	Las Vegas, NV	359	255	70	26	4	4	26		
Cleveland, OH	280	180	71	16	7	6	11	Ogden, UT	31	22	8	—	1	—	—		
Columbus, OH	215	144	50	13	3	5	15	Phoenix, AZ	169	107	31	21	6	4	7		
Dayton, OH	132	103	24	5	—	—	8	Pueblo, CO	29	24	4	—	1	—	1		
Detroit, MI	113	55	39	13	3	3	8	Salt Lake City, UT	103	73	17	7	2	3	9		
Evansville, IN	43	29	12	2	—	—	4	Tucson, AZ	185	139	37	4	1	2	5		
Fort Wayne, IN	68	53	8	4	3	—	4	Pacific	1,666	1,141	346	108	34	25	116		
Gary, IN	9	4	2	—	3	—	—	Berkeley, CA	8	7	1	—	—	—	—		
Grand Rapids, MI	56	47	4	2	—	3	5	Fresno, CA	142	89	31	17	3	2	9		
Indianapolis, IN	203	113	59	19	4	8	13	Glendale, CA	20	15	3	2	—	—	1		
Lansing, MI	48	34	11	3	—	—	1	Honolulu, HI	64	46	10	2	4	2	6		
Milwaukee, WI	69	41	21	5	1	1	2	Long Beach, CA	51	35	12	3	1	—	7		
Peoria, IL	49	40	6	—	2	1	2	Los Angeles, CA	258	175	55	18	6	4	29		
Rockford, IL	64	41	14	6	2	1	2	Pasadena, CA	16	13	1	1	1	—	3		
South Bend, IN	36	24	7	1	1	3	2	Portland, OR	144	96	40	4	2	2	6		
Toledo, OH	100	66	28	5	1	—	5	Sacramento, CA	197	138	46	10	3	—	12		
Youngstown, OH	57	44	12	1	—	—	1	San Diego, CA	163	102	31	12	2	4	8		
W.N. Central	761	448	212	57	17	25	46	San Francisco, CA	86	60	18	4	1	3	3		
Des Moines, IA	—	—	—	—	—	—	—	San Jose, CA	192	145	25	15	5	2	14		
Duluth, MN	24	19	4	1	—	—	2	Santa Cruz, CA	27	20	5	2	—	—	3		
Kansas City, KS	21	16	3	2	—	—	2	Seattle, WA	103	60	27	9	3	4	5		
Kansas City, MO	113	63	41	5	1	1	6	Spokane, WA	66	46	15	4	1	—	2		
Lincoln, NE	47	37	7	1	2	—	2	Tacoma, WA	129	94	26	5	2	2	8		
Minneapolis, MN	60	34	14	5	2	5	6	Total¶	11,507	7,682	2,637	726	220	225	650		
Omaha, NE	86	56	17	8	2	3	7										
St. Louis, MO	231	104	79	27	9	12	7										
St. Paul, MN	65	45	18	1	—	1	2										
Wichita, KS	114	74	29	7	1	3	12										

U: Unavailable. —: No reported cases.

* Mortality data in this table are voluntarily reported from 122 cities in the United States, most of which have populations of >100,000. A death is reported by the place of its occurrence and by the week that the death certificate was filed. Fetal deaths are not included.

† Pneumonia and influenza.

§ Because of changes in reporting methods in this Pennsylvania city, these numbers are partial counts for the current week. Complete counts will be available in 4 to 6 weeks.

¶ Total includes unknown ages.