

## Notifiable Diseases and Mortality Tables

TABLE I. Provisional cases of infrequently reported notifiable diseases (<1,000 cases reported during the preceding year) — United States, week ending December 27, 2014 (52nd week)\* (Export data)

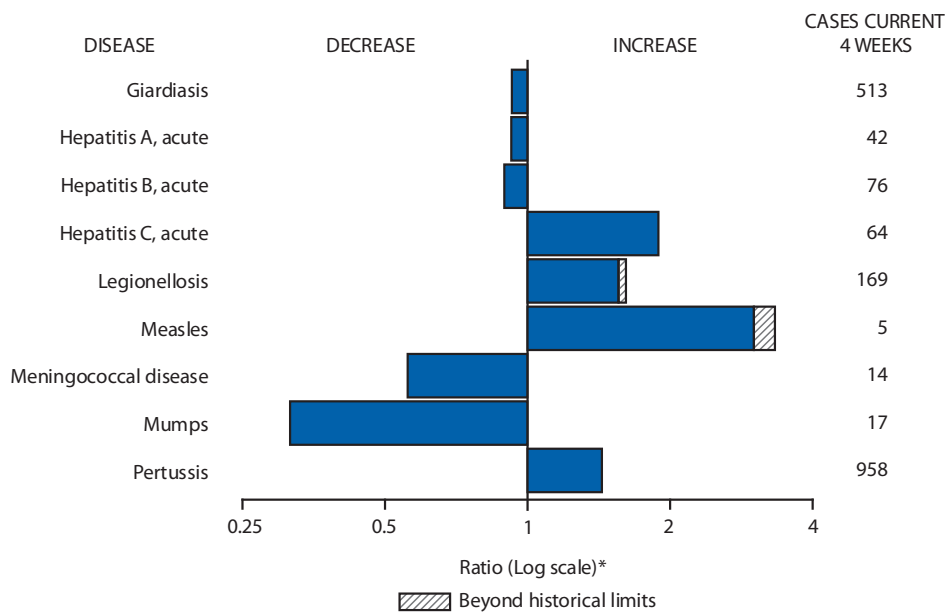
Disease	Current week	Cum 2014	5-year weekly average <sup>†</sup>	Total cases reported for previous years					States reporting cases during current week (No.)
				2013	2012	2011	2010	2009	
Anthrax	—	—	—	—	—	1	—	1	
Arboviral diseases <sup>§, ¶</sup> :									
California serogroup virus disease	—	79	0	95	81	137	75	55	
Eastern equine encephalitis virus disease	—	8	0	8	15	4	10	4	
Powassan virus disease	—	8	0	12	7	16	8	6	
St. Louis encephalitis virus disease	—	8	0	1	3	6	10	12	
Western equine encephalitis virus disease	—	—	—	—	—	—	—	—	
Botulism, total	—	133	3	152	168	153	112	118	
foodborne	—	10	0	4	27	24	7	10	
infant	—	105	3	136	123	97	80	83	
other (wound and unspecified)	—	18	0	12	18	32	25	25	
Brucellosis	—	82	2	99	114	79	115	115	
Chancroid	1	18	1	10	15	8	24	28	DE (1)
Cholera	—	—	1	14	17	40	13	10	
Cyclosporiasis <sup>§</sup>	—	364	3	784	123	151	179	141	
Diphtheria	—	1	—	—	1	—	—	—	
<i>Haemophilus influenzae</i> ,** invasive disease (age <5 yrs):									
serotype b	—	26	1	31	30	14	23	35	
nonserotype b	—	158	5	222	205	145	200	236	
unknown serotype	1	218	6	185	210	226	223	178	PA (1)
Hansen disease <sup>§</sup>	—	51	2	81	82	82	98	103	
Hantavirus pulmonary syndrome <sup>§</sup>	—	24	0	21	30	23	20	20	
Hemolytic uremic syndrome, postdiarrheal <sup>§</sup>	—	213	5	329	274	290	266	242	
Hepatitis B, virus infection perinatal	—	33	2	48	40	U	U	U	
Influenza-associated pediatric mortality <sup>§, ††</sup>	6	124	3	160	52	118	61	358	MN (1), KS (1), TN (3), VA (1)
Leptospirosis	—	21	0	NN	NN	NN	NN	NN	
Listeriosis	7	637	16	735	727	870	821	851	RI (1), PA (2), OH (2), WA (1), CA (1)
Measles <sup>§§</sup>	—	554	1	187	55	220	63	71	
Meningococcal disease, invasive <sup>¶¶</sup> :									
A, C, Y, and W-135	1	93	6	142	161	257	280	301	ME (1)
serogroup B	—	59	3	99	110	159	135	174	
other serogroup	—	19	1	17	20	20	12	23	
unknown serogroup	2	215	10	298	260	323	406	482	GA (1), FL (1)
Novel influenza A virus infections <sup>***</sup>	—	3	50	21	313	14	4	43,774	
Plague	—	5	—	4	4	3	2	8	
Poliomyelitis, paralytic	—	—	0	1	—	—	—	1	
Polio virus Infection, nonparalytic <sup>§</sup>	—	—	—	—	—	—	—	—	
Psittacosis <sup>§</sup>	—	7	0	6	2	2	4	9	
Q fever, total <sup>§</sup>	—	139	4	170	135	134	131	113	
acute	—	113	3	137	113	110	106	93	
chronic	—	26	1	33	22	24	25	20	
Rabies, human	—	1	0	2	1	6	2	4	
Rubella <sup>†††</sup>	1	7	0	9	9	4	5	3	FL (1)
Rubella, congenital syndrome	—	—	0	1	3	—	—	2	
SARS-CoV <sup>§</sup>	—	—	—	—	—	—	—	—	
Smallpox <sup>§</sup>	—	—	—	—	—	—	—	—	
Streptococcal toxic-shock syndrome <sup>§</sup>	1	183	5	224	194	168	142	161	ME (1)
Syphilis, congenital (age <1 yr) <sup>§§§</sup>	—	298	7	348	322	360	377	423	
Tetanus	—	21	1	26	37	36	26	18	
Toxic-shock syndrome (staphylococcal) <sup>§</sup>	1	51	2	71	65	78	82	74	TN (1)
Trichinellosis	—	13	0	22	18	15	7	13	
Tularemia	—	150	1	203	149	166	124	93	
Typhoid fever	2	288	9	338	354	390	467	397	NYC (2)
Vancomycin-intermediate <i>Staphylococcus aureus</i> <sup>§</sup>	1	189	3	248	134	82	91	78	MO (1)
Vancomycin-resistant <i>Staphylococcus aureus</i> <sup>§</sup>	—	—	0	—	2	—	2	1	
Vibriosis (noncholera <i>Vibrio</i> species infections) <sup>§</sup>	1	1,125	13	1,299	1,111	832	846	789	FL (1)
Viral hemorrhagic fever <sup>¶¶¶</sup>	—	7	—	—	—	—	1	NN	
Yellow fever	—	—	—	—	—	—	—	—	

See Table 1 footnotes on next page.

**TABLE I. (Continued) Provisional cases of infrequently reported notifiable diseases (<1,000 cases reported during the preceding year) — United States, week ending December 27, 2014 (52nd week)\***

—: No reported cases. N: Not reportable. NN: Not Nationally Notifiable. Cum: Cumulative year-to-date counts.  
 \* Case counts for reporting year 2014 are provisional and subject to change. For further information on interpretation of these data, see <http://www.cdc.gov/nndss/document/ProvisionalNationalNotifiableDiseasesSurveillanceData20100927.pdf>.  
 † Calculated by summing the incidence counts for the current week, the 2 weeks preceding the current week, and the 2 weeks following the current week, for a total of 5 preceding years. Additional information is available at <http://www.cdc.gov/nndss/document/5yearweeklyaverage.pdf>.  
 ‡ Not reportable in all states. Data from states where the condition is not reportable are excluded from this table except starting in 2007 for the arboviral diseases, STD data, TB data, and influenza-associated pediatric mortality, and in 2003 for SARS-CoV. Reporting exceptions are available at [http://www.cdc.gov/nndss/document/SRCA\\_FINAL\\_REPORT\\_2006-2012\\_final.xlsx](http://www.cdc.gov/nndss/document/SRCA_FINAL_REPORT_2006-2012_final.xlsx).  
 § Includes both neuroinvasive and nonneuroinvasive. Updated weekly from reports to the Division of Vector-Borne Infectious Diseases, National Center for Zoonotic, Vector-Borne, and Enteric Diseases (ArboNET Surveillance). Data for West Nile virus are available in Table II.  
 \*\* Data for *H. influenzae* (all ages, all serotypes) are available in Table II.  
 †† Updated weekly from reports to the Influenza Division, National Center for Immunization and Respiratory Diseases. Since September 28, 2014, 21 influenza-associated pediatric death occurring during the 2014-15 influenza season have been reported.  
 ‡‡ No measles cases were reported for the current week.  
 ¶¶ Data for meningococcal disease (all serogroups) are available in Table II.  
 \*\*\* CDC discontinued reporting of individual confirmed and probable cases of influenza A (H1N1)pdm09 virus infections on July 24, 2009. During 2009, four cases of human infection with novel influenza A viruses, different from the influenza A (H1N1)pdm09 virus, were reported to CDC. The four cases of novel influenza A virus infection reported to CDC during 2010, the fourteen cases reported during 2011, the 313 cases reported in 2012, the 21 cases reported during 2013, and the three cases reported for 2014 are different from the influenza A (H1N1)pdm09 virus. Total case counts are provided by the Influenza Division, National Center for Immunization and Respiratory Diseases (NCIRD).  
 ††† The one rubella case reported for the current week was imported.  
 §§§ Updated weekly from reports to the Division of STD Prevention, National Center for HIV/AIDS, Viral Hepatitis, STD, and TB Prevention.  
 ¶¶¶ There were no cases of viral hemorrhagic fever reported during the current week. In addition to the 4 cases of Ebola diagnosed in the United States to date in 2014, six residents of the US have been medically evacuated to the US for care after developing Ebola in West Africa. Ten of the 11 VHF cases reported for 2014 are confirmed as Ebola and one as Lassa Fever. See Table II for dengue hemorrhagic fever.

**FIGURE I. Selected notifiable disease reports, United States, comparison of provisional 4-week totals December 27, 2014, with historical data**



\* Ratio of current 4-week total to mean of 15 4-week totals (from previous, comparable, and subsequent 4-week periods for the past 5 years). The point where the hatched area begins is based on the mean and two standard deviations of these 4-week totals.

**Notifiable Disease Data Team and 122 Cities Mortality Data Team**

David W. Walker

Deborah A. Adams	Willie J. Anderson
Lenee Blanton	Rosaline Dhara
Diana Harris Onweh	Alan W. Schley
Pearl C. Sharp	

Data presented by the Notifiable Disease Data Team and 122 Cities Mortality Data Team in the weekly *MMWR* are provisional, based on weekly reports to CDC by state health departments. Readers who have difficulty accessing this PDF file may access the HTML file at <http://www.cdc.gov/mmwr/preview/mmwrhtml/mm6351&52md.htm>. Address all inquiries about the *MMWR* Series, including material to be considered for publication, to Editor, *MMWR* Series, Mailstop E-90, CDC, 1600 Clifton Rd., N.E., Atlanta, GA 30329-4027 or to [mmwrq@cdc.gov](mailto:mmwrq@cdc.gov).

Morbidity and Mortality Weekly Report

TABLE II. Provisional cases of selected notifiable diseases, United States, weeks ending December 27, 2014, and December 28, 2013 (52nd week)\* (Export data)

Reporting area	<i>Babesiosis</i>					<i>Chlamydia trachomatis</i> infection					Coccidioidomycosis				
	Current week	Previous 52 weeks		Cum 2014	Cum 2013	Current week	Previous 52 weeks		Cum 2014	Cum 2013	Current week	Previous 52 weeks		Cum 2014	Cum 2013
		Med	Max				Med	Max				Med	Max		
<b>United States</b>	1	10	157	1,544	1,796	5,554	26,636	29,166	1,330,942	1,395,492	35	166	243	8,198	9,438
<b>New England</b>	1	5	92	887	920	111	848	1,173	43,659	48,696	—	0	2	5	1
Connecticut	—	0	27	168	289	—	241	394	12,487	12,775	N	0	0	N	N
Maine	—	0	5	42	36	—	73	109	3,423	3,438	N	0	0	N	N
Massachusetts	—	2	57	506	425	—	396	535	19,693	23,210	—	0	0	—	—
New Hampshire	—	0	5	29	22	—	45	74	2,029	3,119	—	0	2	3	1
Rhode Island	1	0	18	139	142	95	80	171	4,225	4,312	—	0	1	2	—
Vermont	—	0	1	3	6	16	34	69	1,802	1,842	N	0	0	N	N
<b>Mid. Atlantic</b>	—	5	71	612	705	1,679	3,449	3,954	175,366	176,186	—	0	0	—	—
New Jersey	—	1	24	162	171	89	586	694	29,477	28,327	N	0	0	N	N
New York (Upstate)	—	3	56	390	459	632	755	1,866	37,926	37,922	N	0	0	N	N
New York City	—	0	9	60	75	355	1,185	1,280	58,660	57,881	N	0	0	N	N
Pennsylvania	N	0	0	N	N	603	947	1,305	49,303	52,056	N	0	0	N	N
<b>E.N. Central</b>	—	0	4	32	85	985	3,915	4,531	194,186	213,348	—	1	3	50	28
Illinois	—	0	1	1	4	7	1,038	1,412	48,207	63,797	N	0	0	N	N
Indiana	—	0	0	—	1	408	546	921	28,490	28,023	N	0	0	N	N
Michigan	—	0	1	2	2	264	851	1,207	43,254	44,835	—	0	3	31	16
Ohio	—	0	0	—	—	137	1,055	1,247	52,834	53,121	—	0	2	16	7
Wisconsin	—	0	4	29	78	169	438	513	21,401	23,572	—	0	1	3	5
<b>W.N. Central</b>	—	0	1	1	67	188	1,592	1,797	78,749	82,195	—	2	6	117	91
Iowa	N	0	0	N	N	6	227	257	10,257	10,953	N	0	0	N	N
Kansas	N	0	0	N	N	2	210	259	10,609	11,012	N	0	0	N	N
Minnesota	—	0	0	—	64	—	356	426	16,653	18,742	—	1	6	88	64
Missouri	N	0	0	N	N	180	543	635	27,445	27,328	—	0	1	17	17
Nebraska	—	0	0	—	1	—	130	253	5,602	7,301	—	0	1	4	1
North Dakota	—	0	0	—	1	—	64	86	3,198	2,932	—	0	1	8	9
South Dakota	—	0	1	1	1	—	80	100	3,985	3,927	N	0	0	N	N
<b>S. Atlantic</b>	—	0	2	7	12	1,365	5,378	6,987	271,435	275,653	—	0	2	9	8
Delaware	—	0	1	1	2	92	74	220	4,381	5,213	—	0	0	—	1
District of Columbia	N	0	0	N	N	U	0	0	U	U	—	0	1	—	1
Florida	N	0	0	N	N	542	1,597	1,887	82,193	80,182	N	0	0	N	N
Georgia	N	0	0	N	N	193	1,000	2,050	47,848	51,070	N	0	0	N	N
Maryland	—	0	1	3	9	—	476	817	24,145	26,723	—	0	2	9	6
North Carolina	N	0	0	N	N	23	882	1,840	45,743	48,416	N	0	0	N	N
South Carolina	—	0	2	3	1	83	524	923	26,766	25,594	N	0	0	N	N
Virginia	N	0	0	N	N	432	695	1,267	35,820	33,316	N	0	0	N	N
West Virginia	—	0	0	—	—	—	89	140	4,539	5,139	N	0	0	N	N
<b>E.S. Central</b>	—	0	1	1	—	55	1,791	2,562	91,718	94,432	—	0	0	—	—
Alabama	—	0	1	1	—	—	488	734	23,484	29,464	N	0	0	N	N
Kentucky	N	0	0	N	N	—	334	608	16,660	17,134	N	0	0	N	N
Mississippi	N	0	0	N	N	—	420	1,239	23,080	17,464	N	0	0	N	N
Tennessee	—	0	0	—	—	55	584	871	28,494	30,370	N	0	0	N	N
<b>W.S. Central</b>	—	0	1	1	3	45	3,525	4,322	174,740	192,325	—	0	1	3	4
Arkansas	N	0	0	N	N	22	316	422	15,578	15,447	N	0	0	N	N
Louisiana	—	0	0	—	2	—	465	1,359	22,508	28,739	—	0	1	3	4
Oklahoma	N	0	0	N	N	23	286	344	14,082	18,278	N	0	0	N	N
Texas	—	0	1	1	1	—	2,440	2,802	122,572	129,861	N	0	0	N	N
<b>Mountain</b>	—	0	0	—	—	28	1,785	2,430	91,717	93,766	30	116	180	5,763	6,029
Arizona	N	0	0	N	N	—	615	937	31,027	30,564	30	114	177	5,630	5,861
Colorado	N	0	0	N	N	—	397	749	20,126	20,386	N	0	0	N	N
Idaho	N	0	0	N	N	—	102	135	5,164	5,428	N	0	0	N	N
Montana	—	0	0	—	—	1	80	126	4,044	3,818	—	0	2	9	3
Nevada	N	0	0	N	N	5	196	602	11,026	11,781	—	1	4	66	90
New Mexico	N	0	0	N	N	—	221	307	10,916	12,249	—	0	3	26	30
Utah	—	0	0	—	—	22	155	187	7,865	7,535	—	0	2	30	42
Wyoming	—	0	0	—	—	—	32	64	1,549	2,005	—	0	1	2	3
<b>Pacific</b>	—	0	1	3	4	1,098	4,130	5,084	209,372	218,891	5	44	80	2,251	3,277
Alaska	N	0	0	N	N	12	106	145	5,476	5,774	—	0	0	—	—
California	—	0	1	2	3	714	3,255	4,117	165,732	167,346	5	44	80	2,247	3,272
Hawaii	N	0	0	N	N	—	116	148	5,870	6,640	N	0	0	N	N
Oregon	—	0	1	1	—	207	304	395	15,403	14,181	—	0	1	4	5
Washington	—	0	1	—	1	165	354	453	16,891	24,950	N	0	0	N	N
<b>Territories</b>															
American Samoa	N	—	—	N	N	—	—	—	—	—	N	—	—	N	N
C.N.M.I.	—	—	—	—	—	—	—	—	—	—	—	—	—	—	—
Guam	—	0	0	—	—	—	11	11	—	937	—	0	0	—	1
Puerto Rico	N	0	0	N	N	—	82	317	4,809	5,969	N	0	0	N	N
U.S. Virgin Islands	N	0	0	N	N	—	14	24	519	749	—	0	0	—	—

C.N.M.I.: Commonwealth of Northern Mariana Islands.

U: Unavailable. —: No reported cases. N: Not reportable. NN: Not Nationally Notifiable. Cum: Cumulative year-to-date counts. Med: Median. Max: Maximum.

\* Case counts for reporting year 2014 are provisional and subject to change. For further information on interpretation of these data, see <http://www.cdc.gov/nndss/document/ProvisionalNationalNotifiableDiseasesSurveillanceData20100927.pdf>. Data for TB are displayed in Table IV, which appears quarterly.

Morbidity and Mortality Weekly Report

TABLE II. (Continued) Provisional cases of selected notifiable diseases, United States, weeks ending December 27, 2014, and December 28, 2013 (52nd week)\* (Export data)

Reporting area	Dengue Virus Infection														
	Cryptosporidiosis					Dengue Fever†					Dengue Hemorrhagic Fever‡				
	Current week	Previous 52 weeks		Cum 2014	Cum 2013	Current week	Previous 52 weeks		Cum 2014	Cum 2013	Current week	Previous 52 weeks		Cum 2014	Cum 2013
	Med	Max				Med	Max				Med	Max			
<b>United States</b>	48	113	337	7,673	9,056	—	8	21	459	837	—	0	0	—	6
<b>New England</b>	—	5	17	300	277	—	0	3	27	34	—	0	0	—	—
Connecticut	—	0	3	40	36	—	0	1	2	18	—	0	0	—	—
Maine	—	1	4	48	35	—	0	1	1	1	—	0	0	—	—
Massachusetts	—	3	9	136	123	—	0	2	15	—	—	0	0	—	—
New Hampshire	—	0	3	34	45	—	0	0	—	4	—	0	0	—	—
Rhode Island	—	0	4	15	12	—	0	1	5	9	—	0	0	—	—
Vermont	—	0	7	27	26	—	0	2	4	2	—	0	0	—	—
<b>Mid. Atlantic</b>	9	12	34	683	844	—	2	9	131	206	—	0	0	—	2
New Jersey	—	0	2	14	70	—	1	6	66	—	—	0	0	—	—
New York (Upstate)	2	4	14	236	252	—	0	4	25	51	—	0	0	—	1
New York City	1	2	7	93	81	—	0	3	34	131	—	0	0	—	1
Pennsylvania	6	6	15	340	441	—	0	1	6	24	—	0	0	—	—
<b>E.N. Central</b>	1	21	69	1,333	1,524	—	0	3	23	65	—	0	0	—	—
Illinois	—	3	9	146	266	—	0	1	3	26	—	0	0	—	—
Indiana	—	3	9	135	139	—	0	2	4	6	—	0	0	—	—
Michigan	—	4	13	229	270	—	0	1	3	16	—	0	0	—	—
Ohio	1	6	15	323	372	—	0	1	7	9	—	0	0	—	—
Wisconsin	—	7	32	500	477	—	0	2	6	8	—	0	0	—	—
<b>W.N. Central</b>	1	14	39	855	2,547	—	0	1	7	38	—	0	0	—	3
Iowa	—	4	13	247	1,505	—	0	1	4	—	—	0	0	—	2
Kansas	—	1	4	63	99	—	0	1	1	8	—	0	0	—	—
Minnesota	—	0	2	—	324	—	0	0	—	21	—	0	0	—	1
Missouri	—	3	13	155	210	—	0	1	2	5	—	0	0	—	—
Nebraska	1	2	9	103	151	—	0	0	—	—	—	0	0	—	—
North Dakota	—	1	16	140	84	—	0	0	—	1	—	0	0	—	—
South Dakota	—	2	9	147	174	—	0	0	—	3	—	0	0	—	—
<b>S. Atlantic</b>	26	27	150	2,511	1,181	—	2	6	107	216	—	0	0	—	1
Delaware	—	0	1	6	16	—	0	1	1	2	—	0	0	—	—
District of Columbia	—	0	1	3	15	—	0	1	2	—	—	0	0	—	—
Florida	23	14	123	1,866	409	—	1	5	73	151	—	0	0	—	—
Georgia	2	3	19	199	287	—	0	1	3	9	—	0	0	—	—
Maryland	1	1	6	78	65	—	0	2	7	11	—	0	0	—	—
North Carolina	—	0	42	165	126	—	0	2	8	13	—	0	0	—	—
South Carolina	—	1	4	65	98	—	0	1	2	7	—	0	0	—	—
Virginia	—	2	8	121	144	—	0	3	11	21	—	0	0	—	1
West Virginia	—	0	2	8	21	—	0	0	—	2	—	0	0	—	—
<b>E.S. Central</b>	4	6	17	353	352	—	0	1	7	16	—	0	0	—	—
Alabama	—	2	8	124	144	—	0	1	3	5	—	0	0	—	—
Kentucky	—	1	6	70	72	—	0	0	—	—	—	0	0	—	—
Mississippi	—	1	6	66	49	—	0	1	2	1	—	0	0	—	—
Tennessee	4	2	6	93	87	—	0	1	2	10	—	0	0	—	—
<b>W.S. Central</b>	2	12	46	696	923	—	0	3	27	107	—	0	0	—	—
Arkansas	—	1	12	54	57	—	0	2	2	2	—	0	0	—	—
Louisiana	1	2	17	217	378	—	0	1	2	6	—	0	0	—	—
Oklahoma	—	1	10	83	76	—	0	0	—	4	—	0	0	—	—
Texas	1	6	37	342	412	—	0	3	23	95	—	0	0	—	—
<b>Mountain</b>	3	8	20	432	734	—	0	10	31	12	—	0	0	—	—
Arizona	—	1	5	44	42	—	0	10	26	1	—	0	0	—	—
Colorado	—	1	5	57	99	—	0	0	—	—	—	0	0	—	—
Idaho	2	1	14	99	147	—	0	1	1	1	—	0	0	—	—
Montana	1	1	5	64	125	—	0	1	1	5	—	0	0	—	—
Nevada	—	0	2	14	20	—	0	1	3	4	—	0	0	—	—
New Mexico	—	1	7	74	49	—	0	0	—	—	—	0	0	—	—
Utah	—	1	4	59	86	—	0	0	—	—	—	0	0	—	—
Wyoming	—	0	4	21	166	—	0	0	—	1	—	0	0	—	—
<b>Pacific</b>	2	9	24	510	674	—	2	7	99	143	—	0	0	—	—
Alaska	—	0	1	4	6	—	0	1	3	1	—	0	0	—	—
California	1	6	19	336	306	—	1	7	81	119	—	0	0	—	—
Hawaii	—	0	2	3	1	—	0	2	6	10	—	0	0	—	—
Oregon	1	2	7	109	277	—	0	0	—	—	—	0	0	—	—
Washington	—	0	9	58	84	—	0	2	9	13	—	0	0	—	—
<b>Territories</b>															
American Samoa	N	—	—	N	N	—	—	—	—	—	—	—	—	—	—
C.N.M.I.	—	—	—	—	—	—	—	—	—	—	—	—	—	—	—
Guam	—	0	0	—	—	—	0	0	—	—	—	0	0	—	—
Puerto Rico	N	0	0	N	N	—	6	40	459	9,557	—	0	2	2	153
U.S. Virgin Islands	—	0	0	—	—	—	0	2	7	169	—	0	0	—	5

C.N.M.I.: Commonwealth of Northern Mariana Islands.

U: Unavailable. —: No reported cases. N: Not reportable. NN: Not Nationally Notifiable. Cum: Cumulative year-to-date counts. Med: Median. Max: Maximum.

\* Case counts for reporting year 2014 are provisional and subject to change. For further information on interpretation of these data, see <http://www.cdc.gov/nndss/document/ProvisionalNationalNotifiableDiseasesSurveillanceData20100927.pdf>. Data for TB are displayed in Table IV, which appears quarterly.

† Dengue Fever includes cases that meet criteria for Dengue Fever with hemorrhage, other clinical and unknown case classifications.

‡ DHF includes cases that meet criteria for dengue shock syndrome (DSS), a more severe form of DHF.

Morbidity and Mortality Weekly Report

TABLE II. (Continued) Provisional cases of selected notifiable diseases, United States, weeks ending December 27, 2014, and December 28, 2013 (52nd week)\* (Export data)

Reporting area	Ehrlichiosis/Anaplasmosis†														
	<i>Ehrlichia chaffeensis</i>					<i>Anaplasma phagocytophilum</i>					Undetermined				
	Current week	Previous 52 weeks		Cum 2014	Cum 2013	Current week	Previous 52 weeks		Cum 2014	Cum 2013	Current week	Previous 52 weeks		Cum 2014	Cum 2013
	Med	Max				Med	Max				Med	Max			
<b>United States</b>	1	19	101	1,396	1,509	9	27	145	1,990	2,451	—	1	12	135	217
<b>New England</b>	—	0	6	49	65	1	9	72	944	417	—	0	2	5	7
Connecticut	—	0	0	—	—	—	0	11	62	125	—	0	0	—	—
Maine	—	0	1	8	3	1	3	13	184	94	—	0	2	5	2
Massachusetts	—	0	3	19	—	—	3	40	468	—	—	0	0	—	—
New Hampshire	—	0	1	4	7	—	1	11	87	88	—	0	0	—	2
Rhode Island	—	0	4	17	49	—	0	11	78	69	—	0	0	—	—
Vermont	—	0	1	1	6	—	1	6	65	41	—	0	0	—	3
<b>Mid. Atlantic</b>	—	2	20	179	166	8	8	42	504	591	—	0	3	12	37
New Jersey	—	0	7	52	50	—	1	6	64	80	—	0	2	4	2
New York (Upstate)	—	1	17	107	92	8	7	36	399	454	—	0	3	8	18
New York City	—	0	3	18	14	—	0	5	41	23	—	0	0	—	—
Pennsylvania	—	0	1	2	10	—	0	0	—	34	—	0	1	—	17
<b>E.N. Central</b>	—	0	5	59	89	—	5	48	433	705	—	1	7	75	93
Illinois	—	0	5	47	44	—	0	2	16	9	—	0	1	1	—
Indiana	—	0	0	—	—	—	0	0	—	—	—	0	5	38	48
Michigan	—	0	1	4	1	—	0	2	6	4	—	0	0	—	1
Ohio	—	0	1	4	10	—	0	1	2	4	—	0	1	1	2
Wisconsin	—	0	2	4	34	—	4	46	409	688	—	0	4	35	42
<b>W.N. Central</b>	—	4	34	377	453	—	0	3	35	659	—	0	3	24	56
Iowa	N	0	0	N	N	N	0	0	N	N	N	0	0	N	N
Kansas	—	0	5	45	86	—	0	1	4	7	—	0	1	3	—
Minnesota	—	0	0	—	7	—	0	1	—	630	—	0	0	—	42
Missouri	—	2	29	324	353	—	0	3	24	12	—	0	3	21	11
Nebraska	—	0	2	7	6	—	0	1	1	2	—	0	0	—	—
North Dakota	—	0	1	1	—	—	0	1	6	8	—	0	0	—	3
South Dakota	—	0	0	—	1	—	0	0	—	—	—	0	0	—	—
<b>S. Atlantic</b>	—	4	24	293	288	—	0	6	43	48	—	0	1	1	7
Delaware	—	0	5	22	14	—	0	1	2	—	—	0	0	—	1
District of Columbia	N	0	0	N	N	N	0	0	N	N	N	0	0	N	N
Florida	—	0	3	30	21	—	0	2	7	2	—	0	0	—	—
Georgia	—	0	2	11	20	—	0	0	—	—	—	0	0	—	—
Maryland	—	0	5	44	31	—	0	2	7	5	—	0	0	—	1
North Carolina	—	0	23	69	78	—	0	6	10	15	—	0	0	—	—
South Carolina	—	0	2	8	7	—	0	0	—	—	—	0	0	—	—
Virginia	—	0	9	106	113	—	0	2	15	23	—	0	1	1	3
West Virginia	—	0	1	3	4	—	0	1	2	3	—	0	0	—	2
<b>E.S. Central</b>	—	1	13	157	166	—	0	2	10	9	—	0	2	12	6
Alabama	—	0	2	10	11	—	0	1	6	3	—	0	1	2	1
Kentucky	—	0	6	60	67	—	0	0	—	—	—	0	0	—	—
Mississippi	—	0	1	4	3	—	0	1	1	1	—	0	0	—	1
Tennessee	1	0	8	83	85	—	0	1	3	5	—	0	2	10	4
<b>W.S. Central</b>	—	4	63	282	280	—	0	8	21	18	—	0	0	—	—
Arkansas	—	4	18	211	164	—	0	3	14	7	—	0	0	—	—
Louisiana	—	0	1	3	2	—	0	1	1	1	—	0	0	—	—
Oklahoma	—	0	62	58	106	—	0	8	3	10	—	0	0	—	—
Texas	—	0	2	10	8	—	0	1	3	—	—	0	0	—	—
<b>Mountain</b>	—	0	0	—	2	—	0	0	—	1	—	0	1	1	2
Arizona	—	0	0	—	—	—	0	0	—	—	—	0	1	1	2
Colorado	N	0	0	N	N	N	0	0	N	N	N	0	0	N	N
Idaho	N	0	0	N	N	N	0	0	N	N	N	0	0	N	N
Montana	—	0	0	—	1	—	0	0	—	—	—	0	0	—	—
Nevada	—	0	0	—	—	—	0	0	—	1	—	0	0	—	—
New Mexico	N	0	0	N	N	N	0	0	N	N	N	0	0	N	N
Utah	—	0	0	—	1	—	0	0	—	—	—	0	0	—	—
Wyoming	—	0	0	—	—	—	0	0	—	—	—	0	0	—	—
<b>Pacific</b>	—	0	0	—	—	—	0	2	—	3	—	0	1	5	9
Alaska	N	0	0	N	N	N	0	0	N	N	N	0	0	N	N
California	—	0	0	—	—	—	0	0	—	—	—	0	1	5	9
Hawaii	N	0	0	N	N	N	0	0	N	N	N	0	0	N	N
Oregon	—	0	0	—	—	—	0	0	—	1	—	0	0	—	—
Washington	—	0	0	—	—	—	0	2	—	2	—	0	0	—	—
<b>Territories</b>															
American Samoa	N	—	—	N	N	N	—	—	N	N	N	—	—	N	N
C.N.M.I.	—	—	—	—	—	—	—	—	—	—	—	—	—	—	—
Guam	N	0	0	N	N	N	0	0	N	N	N	0	0	N	N
Puerto Rico	N	0	0	N	N	N	0	0	N	N	N	0	0	N	N
U.S. Virgin Islands	—	0	0	—	—	—	0	0	—	—	—	0	0	—	—

C.N.M.I.: Commonwealth of Northern Mariana Islands.

U: Unavailable. —: No reported cases. N: Not reportable. NN: Not Nationally Notifiable. Cum: Cumulative year-to-date counts. Med: Median. Max: Maximum.

\* Case counts for reporting year 2014 are provisional and subject to change. For further information on interpretation of these data, see <http://www.cdc.gov/nndss/document/ProvisionalNationalNotifiableDiseasesSurveillanceData20100927.pdf>. Data for TB are displayed in Table IV, which appears quarterly.

† Cumulative total *E. ewingii* cases reported for year 2014 = 14.

TABLE II. (Continued) Provisional cases of selected notifiable diseases, United States, weeks ending December 27, 2014, and December 28, 2013 (52nd week)\* (Export data)

Reporting area	Giardiasis					Gonorrhea					Haemophilus influenzae, invasive† All ages, all serotypes				
	Current week	Previous 52 weeks		Cum 2014	Cum 2013	Current week	Previous 52 weeks		Cum 2014	Cum 2013	Current week	Previous 52 weeks		Cum 2014	Cum 2013
		Med	Max				Med	Max				Med	Max		
<b>United States</b>	116	232	376	12,713	15,106	1,669	6,306	7,106	320,753	330,526	27	59	110	3,044	3,792
<b>New England</b>	2	24	48	1,265	1,443	1	133	190	6,749	6,883	—	4	12	216	362
Connecticut	—	4	9	197	230	—	39	116	2,135	2,860	—	1	3	54	55
Maine	1	3	8	152	218	—	5	10	229	245	—	0	2	20	25
Massachusetts	—	12	25	663	664	—	71	113	3,559	3,106	—	2	8	98	232
New Hampshire	—	1	6	81	117	—	4	10	205	121	—	0	2	18	25
Rhode Island	—	0	5	36	41	1	9	41	551	454	—	0	9	13	13
Vermont	1	3	8	136	173	—	1	6	70	97	—	0	2	13	12
<b>Mid. Atlantic</b>	44	47	83	2,459	2,865	384	750	951	39,042	40,807	11	10	24	524	609
New Jersey	—	2	12	143	336	17	125	170	6,519	7,014	—	3	7	134	114
New York (Upstate)	19	17	61	910	1,010	138	122	339	6,378	6,460	1	2	17	128	183
New York City	14	14	31	741	764	95	260	342	13,707	13,459	4	2	7	106	105
Pennsylvania	11	13	23	665	755	134	240	321	12,438	13,874	6	3	7	156	207
<b>E.N. Central</b>	8	27	52	1,450	1,953	236	909	1,195	46,419	55,395	3	8	19	447	640
Illinois	—	0	9	32	311	—	222	342	10,512	16,464	—	2	6	130	162
Indiana	—	3	9	135	203	109	140	280	7,264	7,144	—	2	4	83	141
Michigan	1	9	17	471	547	37	179	262	9,347	10,569	—	2	5	94	102
Ohio	5	7	21	380	507	48	308	374	15,516	16,619	3	2	9	124	149
Wisconsin	2	7	22	432	385	42	77	107	3,780	4,599	—	0	4	16	86
<b>W.N. Central</b>	3	15	38	823	1,561	88	338	407	17,276	17,713	—	4	14	255	271
Iowa	1	4	11	199	273	1	30	54	1,571	1,472	—	0	2	4	1
Kansas	—	2	6	93	102	3	49	71	2,493	2,161	—	0	3	32	40
Minnesota	—	0	7	—	618	—	73	97	3,536	3,873	—	2	6	104	90
Missouri	—	5	13	235	244	84	141	193	7,262	7,546	—	2	6	83	95
Nebraska	2	2	9	133	169	—	23	56	1,018	1,385	—	0	3	23	29
North Dakota	—	1	2	38	44	—	12	23	594	492	—	0	2	9	13
South Dakota	—	2	9	125	111	—	16	27	802	784	—	0	0	—	3
<b>S. Atlantic</b>	15	48	89	2,464	2,543	629	1,379	1,760	69,858	71,324	8	15	30	770	945
Delaware	—	0	3	19	20	26	24	65	1,254	1,390	—	0	3	14	9
District of Columbia	—	1	3	37	79	U	0	0	U	U	1	0	1	8	12
Florida	15	21	54	1,144	1,114	126	394	517	20,243	20,818	3	4	12	253	273
Georgia	—	12	22	588	641	73	257	612	12,741	14,252	—	2	8	102	162
Maryland	—	4	11	242	228	—	106	177	5,246	5,989	—	1	5	84	102
North Carolina	N	0	0	N	N	214	244	512	13,581	13,666	1	2	9	129	144
South Carolina	—	2	10	146	133	40	155	278	7,789	7,194	1	1	4	60	106
Virginia	—	5	18	236	278	150	143	372	8,193	6,952	—	1	7	80	98
West Virginia	—	1	3	52	50	—	16	26	811	1,063	2	0	5	40	39
<b>E.S. Central</b>	—	3	10	163	174	16	470	649	23,437	25,164	—	4	9	209	259
Alabama	—	3	10	163	174	—	130	184	6,159	8,377	—	1	4	60	74
Kentucky	N	0	0	N	N	—	79	166	4,070	4,315	—	0	3	21	47
Mississippi	N	0	0	N	N	—	125	363	6,611	5,096	—	1	2	35	29
Tennessee	N	0	0	N	N	16	130	211	6,597	7,376	—	2	6	93	109
<b>W.S. Central</b>	3	6	19	344	374	10	938	1,278	48,568	51,814	4	4	8	184	195
Arkansas	—	2	8	108	119	4	89	142	4,542	4,007	1	1	4	45	25
Louisiana	3	3	15	236	255	—	139	334	6,753	8,669	1	1	4	43	52
Oklahoma	—	0	0	—	—	6	89	130	4,445	5,303	2	1	4	86	113
Texas	N	0	0	N	N	—	643	793	32,828	33,835	—	0	1	10	5
<b>Mountain</b>	1	21	45	1,070	1,148	13	342	436	17,345	15,316	—	6	13	272	328
Arizona	—	2	10	105	115	—	144	262	7,315	6,412	—	1	8	90	112
Colorado	—	6	17	330	355	—	59	86	2,910	2,820	—	0	4	38	81
Idaho	1	3	9	153	137	—	5	16	256	211	—	0	3	16	19
Montana	—	2	4	85	91	—	7	15	390	224	—	0	3	15	6
Nevada	—	1	5	63	91	9	51	123	2,975	2,714	—	0	2	16	14
New Mexico	—	1	7	92	99	—	41	69	2,058	1,918	—	1	3	40	48
Utah	—	4	11	225	228	4	27	47	1,351	951	—	1	6	54	42
Wyoming	—	0	2	17	32	—	1	8	90	66	—	0	1	3	6
<b>Pacific</b>	40	52	107	2,675	3,045	292	1,045	1,176	52,059	46,110	1	3	7	167	183
Alaska	—	1	8	84	82	6	25	44	1,267	1,128	—	0	2	25	21
California	37	34	65	1,785	1,991	180	875	1,015	43,405	38,166	—	0	3	32	39
Hawaii	—	1	3	36	60	—	17	30	889	718	—	0	2	24	28
Oregon	—	7	14	343	364	37	42	131	2,303	1,729	1	1	4	79	84
Washington	3	7	66	427	548	69	85	128	4,195	4,369	—	0	3	7	11
<b>Territories</b>															
American Samoa	—	—	—	—	—	—	—	—	—	—	—	—	—	—	—
C.N.M.I.	—	—	—	—	—	—	—	—	—	—	—	—	—	—	—
Guam	—	0	0	—	2	—	0	0	—	92	—	0	0	—	—
Puerto Rico	—	0	10	29	48	—	8	30	435	356	—	0	0	—	1
U.S. Virgin Islands	—	0	0	—	—	—	1	6	55	55	—	0	0	—	—

C.N.M.I.: Commonwealth of Northern Mariana Islands.

U: Unavailable. —: No reported cases. N: Not reportable. NN: Not Nationally Notifiable. Cum: Cumulative year-to-date counts. Med: Median. Max: Maximum.

\* Case counts for reporting year 2014 are provisional and subject to change. For further information on interpretation of these data, see <http://www.cdc.gov/nndss/document/ProvisionalNationalNotifiableDiseasesSurveillanceData20100927.pdf>. Data for TB are displayed in Table IV, which appears quarterly.† Data for *H. influenzae* (age <5 yrs for serotype b, nonserotype b, and unknown serotype) are available in Table I.

Morbidity and Mortality Weekly Report

TABLE II. (Continued) Provisional cases of selected notifiable diseases, United States, weeks ending December 27, 2014, and December 28, 2013 (52nd week)\* (Export data)

Reporting area	Hepatitis (viral, acute), by type														
	A				B				C						
	Current week	Previous 52 weeks		Cum 2014	Cum 2013	Current week	Previous 52 weeks		Cum 2014	Cum 2013	Current week	Previous 52 weeks		Cum 2014	Cum 2013
	Med	Max				Med	Max				Med	Max			
<b>United States</b>	3	20	41	1,084	1,781	7	48	116	2,567	3,050	4	35	67	1,707	2,138
<b>New England</b>	—	1	7	77	92	—	1	3	53	94	—	3	11	180	185
Connecticut	—	0	3	22	19	—	0	2	8	8	—	0	1	7	—
Maine	—	0	2	8	10	—	0	1	12	11	—	0	2	28	8
Massachusetts	—	1	3	34	43	—	0	2	25	71	—	3	10	141	174
New Hampshire	—	0	2	5	9	—	0	1	4	2	N	0	0	N	N
Rhode Island	—	0	1	6	4	U	0	0	U	U	U	0	0	U	U
Vermont	—	0	1	2	7	—	0	2	4	2	—	0	1	4	3
<b>Mid. Atlantic</b>	2	3	8	143	288	3	3	9	179	225	2	4	15	221	318
New Jersey	—	0	2	15	68	—	0	3	20	65	—	0	3	27	106
New York (Upstate)	—	0	4	38	75	1	1	3	39	49	1	2	11	97	115
New York City	—	1	4	42	92	—	1	6	53	68	—	0	4	15	16
Pennsylvania	2	1	4	48	53	2	1	5	67	43	1	1	5	82	81
<b>E.N. Central</b>	—	3	9	170	290	2	7	62	517	482	—	6	17	322	442
Illinois	—	1	9	71	79	—	1	5	46	94	—	0	2	24	37
Indiana	—	0	3	15	32	—	1	7	74	101	—	1	6	67	175
Michigan	—	1	4	46	83	—	1	4	52	53	—	2	8	109	74
Ohio	—	0	4	32	59	2	3	12	173	225	—	2	15	101	116
Wisconsin	—	0	1	6	37	—	0	57	172	9	—	0	2	21	40
<b>W.N. Central</b>	—	1	5	66	94	—	1	4	69	116	—	0	3	35	77
Iowa	—	0	2	10	17	—	0	2	9	11	—	0	0	—	—
Kansas	—	0	1	5	11	—	0	2	9	11	—	0	3	24	17
Minnesota	—	0	2	13	32	—	0	1	5	19	—	0	1	2	47
Missouri	—	0	2	19	8	—	1	3	38	61	—	0	1	6	6
Nebraska	—	0	2	10	13	—	0	1	7	9	—	0	1	2	2
North Dakota	—	0	1	7	9	—	0	0	—	—	—	0	1	1	4
South Dakota	—	0	1	2	4	—	0	1	1	5	—	0	0	—	1
<b>S. Atlantic</b>	—	4	9	217	284	2	16	28	811	884	2	6	22	361	413
Delaware	—	0	1	1	4	—	0	1	5	14	U	0	0	U	U
District of Columbia	—	0	0	—	—	—	0	0	—	—	—	0	0	—	—
Florida	—	1	5	87	115	1	7	13	327	323	1	2	7	87	134
Georgia	—	0	3	25	36	1	2	4	89	104	—	0	2	23	48
Maryland	—	0	3	29	29	—	0	4	38	43	1	0	3	37	53
North Carolina	—	0	6	36	46	—	1	13	97	75	—	1	20	108	79
South Carolina	—	0	1	6	14	—	0	4	35	58	—	0	1	4	—
Virginia	—	0	3	23	36	—	1	5	55	72	—	1	5	47	41
West Virginia	—	0	1	10	4	—	3	9	165	195	—	1	6	55	58
<b>E.S. Central</b>	—	1	3	45	59	—	10	16	518	621	—	5	11	269	354
Alabama	—	0	2	15	10	—	2	6	110	90	—	0	3	32	30
Kentucky	—	0	2	14	24	—	3	7	140	214	—	2	8	118	226
Mississippi	—	0	1	4	5	—	1	4	45	55	U	0	0	U	U
Tennessee	—	0	2	12	20	—	4	8	223	262	—	3	7	119	98
<b>W.S. Central</b>	1	2	12	138	146	—	4	18	223	314	—	2	10	92	117
Arkansas	—	0	1	1	9	—	0	4	19	50	—	0	2	9	30
Louisiana	—	0	2	7	14	—	1	4	69	82	—	0	3	21	19
Oklahoma	—	0	4	16	14	—	0	10	35	40	—	0	8	20	40
Texas	1	2	8	114	109	—	2	10	100	142	—	0	5	42	28
<b>Mountain</b>	—	1	4	66	182	—	1	4	46	106	—	1	5	75	83
Arizona	—	0	3	25	66	—	0	1	13	28	U	0	0	U	U
Colorado	—	0	2	9	51	—	0	1	1	24	—	0	1	5	21
Idaho	—	0	1	7	8	—	0	1	6	13	—	0	3	7	14
Montana	—	0	1	5	6	—	0	0	—	4	—	0	2	13	16
Nevada	—	0	1	6	19	—	0	3	19	29	—	0	1	4	9
New Mexico	—	0	2	9	20	—	0	1	1	3	—	0	1	13	12
Utah	—	0	1	4	12	—	0	1	6	5	—	1	2	33	11
Wyoming	—	0	1	1	—	—	0	0	—	—	—	0	0	—	—
<b>Pacific</b>	—	3	9	162	346	—	3	13	151	208	—	3	10	152	149
Alaska	—	0	1	1	1	—	0	1	3	1	—	0	0	—	—
California	—	2	7	124	255	—	1	6	78	138	—	1	4	70	72
Hawaii	—	0	2	5	16	—	0	1	4	4	—	0	0	—	—
Oregon	—	0	2	13	29	—	0	3	30	32	—	0	2	15	14
Washington	—	0	3	19	45	—	0	7	36	33	—	1	9	67	63
<b>Territories</b>															
American Samoa	—	—	—	—	—	—	—	—	—	—	—	—	—	—	—
C.N.M.I.	—	—	—	—	—	—	—	—	—	—	—	—	—	—	—
Guam	—	0	0	—	31	—	0	0	—	75	—	0	0	—	71
Puerto Rico	—	0	1	3	10	—	0	2	13	36	N	0	0	N	N
U.S. Virgin Islands	—	0	0	—	—	—	0	0	—	—	—	0	0	—	—

C.N.M.I.: Commonwealth of Northern Mariana Islands.

U: Unavailable. —: No reported cases. N: Not reportable. NN: Not Nationally Notifiable. Cum: Cumulative year-to-date counts. Med: Median. Max: Maximum.

\* Case counts for reporting year 2014 are provisional and subject to change. For further information on interpretation of these data, see <http://www.cdc.gov/nndss/document/ProvisionalNationalNotifiableDiseasesSurveillanceData20100927.pdf>. Data for TB are displayed in Table IV, which appears quarterly.

Morbidity and Mortality Weekly Report

TABLE II. (Continued) Provisional cases of selected notifiable diseases, United States, weeks ending December 27, 2014, and December 28, 2013 (52nd week)\* (Export data)

Reporting area	Invasive Pneumococcal disease†										Legionellosis				
	All ages					Age <5									
	Current week	Previous 52 weeks		Cum 2014	Cum 2013	Current week	Previous 52 weeks		Cum 2014	Cum 2013	Current week	Previous 52 weeks		Cum 2014	Cum 2013
	Med	Max				Med	Max				Med	Max			
<b>United States</b>	109	230	752	12,608	16,666	7	19	56	913	1,171	33	80	179	4,486	4,954
<b>New England</b>	3	20	37	995	693	—	1	3	48	47	—	4	14	236	363
Connecticut	—	4	10	213	315	—	0	1	8	16	—	1	3	50	63
Maine	1	2	8	131	121	—	0	1	6	6	—	0	4	18	23
Massachusetts	—	9	24	460	23	—	0	2	25	20	—	2	8	129	189
New Hampshire	—	1	6	74	101	—	0	1	4	5	—	0	2	10	27
Rhode Island	1	1	10	64	76	—	0	2	4	—	—	0	10	23	46
Vermont	1	1	3	53	57	—	0	1	1	—	—	0	2	6	15
<b>Mid. Atlantic</b>	37	27	115	1,370	2,293	1	1	10	76	128	14	17	49	992	1,431
New Jersey	—	0	19	38	598	—	0	1	2	39	—	2	6	101	241
New York (Upstate)	20	14	76	766	1,022	1	1	6	44	51	5	6	22	394	456
New York City	17	11	25	566	673	—	1	4	30	38	6	3	15	205	300
Pennsylvania	N	—	—	N	N	N	0	0	N	N	3	5	14	292	434
<b>E.N. Central</b>	20	45	84	2,251	3,054	—	3	8	142	187	10	17	48	999	1,311
Illinois	N	0	0	N	N	—	0	3	30	41	—	3	16	237	299
Indiana	—	9	33	472	726	—	0	4	26	36	2	2	13	150	91
Michigan	—	10	19	525	743	—	0	2	28	43	—	3	13	174	272
Ohio	16	18	31	895	1,161	—	1	4	43	43	8	7	25	405	491
Wisconsin	4	6	16	359	424	—	0	3	15	24	—	0	7	33	158
<b>W.N. Central</b>	7	10	37	587	1,043	3	1	4	47	99	—	3	20	234	183
Iowa	N	0	0	N	N	N	0	0	N	N	—	0	3	32	11
Kansas	—	2	9	123	149	N	0	0	N	N	—	0	2	14	17
Minnesota	—	0	18	159	536	—	0	3	8	43	—	1	7	55	49
Missouri	N	0	0	N	N	—	0	3	21	32	—	1	12	96	77
Nebraska	5	3	8	148	156	3	0	2	14	14	—	0	2	23	19
North Dakota	2	1	4	70	103	—	0	1	4	10	—	0	1	4	3
South Dakota	—	2	5	87	99	N	0	0	N	N	—	0	2	10	7
<b>S. Atlantic</b>	23	48	128	2,629	3,601	1	5	9	224	288	3	16	36	886	770
Delaware	—	1	5	33	29	—	0	1	1	1	—	0	2	18	16
District of Columbia	—	1	6	67	85	—	0	1	2	2	—	0	0	—	14
Florida	9	12	45	781	1,089	1	1	6	87	95	1	5	11	276	250
Georgia	2	12	61	708	1,138	—	1	4	52	91	—	1	5	70	66
Maryland	4	7	21	398	492	—	0	4	30	27	1	2	11	141	162
North Carolina	—	0	0	—	—	N	0	0	N	N	1	2	19	182	90
South Carolina	8	7	27	409	439	—	0	2	25	19	—	0	3	41	22
Virginia	—	0	3	17	—	—	0	3	17	37	—	2	7	113	123
West Virginia	—	4	16	216	329	—	0	1	10	16	—	0	4	45	27
<b>E.S. Central</b>	7	24	51	1,294	1,459	1	1	6	95	95	1	5	19	315	193
Alabama	—	3	10	192	182	—	0	2	16	18	—	1	5	63	41
Kentucky	—	2	10	157	255	—	0	2	9	13	—	1	8	81	50
Mississippi	—	4	13	231	233	—	0	2	22	18	—	0	2	30	19
Tennessee	7	12	28	714	789	1	1	4	48	46	1	2	12	141	83
<b>W.S. Central</b>	4	35	305	1,785	2,325	1	3	20	179	189	4	6	29	337	240
Arkansas	—	4	30	222	252	—	0	2	21	11	—	0	5	35	24
Louisiana	4	5	23	307	358	—	0	3	24	25	—	1	4	51	29
Oklahoma	—	0	0	—	—	1	0	2	25	21	—	0	10	30	19
Texas	—	25	263	1,256	1,715	—	2	18	109	132	4	4	24	221	168
<b>Mountain</b>	8	26	81	1,539	2,012	—	2	7	84	116	1	2	12	149	190
Arizona	8	10	41	695	786	—	1	6	38	44	—	1	4	55	69
Colorado	—	7	24	361	504	—	0	2	15	26	1	0	7	25	48
Idaho	N	0	0	N	N	—	0	1	6	4	—	0	2	12	12
Montana	—	1	4	37	31	—	0	1	1	1	—	0	1	4	9
Nevada	—	3	7	123	139	—	0	2	6	5	—	0	3	22	19
New Mexico	—	4	16	275	328	—	0	3	13	12	—	0	1	6	11
Utah	—	0	11	33	202	—	0	1	3	23	—	0	2	24	22
Wyoming	—	0	3	15	22	—	0	1	2	1	—	0	1	1	—
<b>Pacific</b>	—	3	8	158	186	—	0	3	18	22	—	6	16	338	273
Alaska	—	1	5	80	105	—	0	2	8	15	—	0	1	2	1
California	N	0	0	N	N	N	0	0	N	N	—	5	10	255	203
Hawaii	—	1	6	78	81	—	0	2	10	7	—	0	1	7	7
Oregon	N	0	0	N	N	N	0	0	N	N	—	0	3	30	20
Washington	N	0	0	N	N	N	0	0	N	N	—	0	9	44	42
<b>Territories</b>															
American Samoa	N	—	—	N	N	—	—	—	—	—	N	—	—	N	N
C.N.M.I.	—	—	—	—	—	—	—	—	—	—	—	—	—	—	—
Guam	—	0	0	—	18	—	0	0	—	—	—	0	0	—	—
Puerto Rico	—	0	0	—	—	—	0	0	—	—	—	0	1	4	13
U.S. Virgin Islands	—	0	0	—	—	—	0	0	—	—	—	0	0	—	—

C.N.M.I.: Commonwealth of Northern Mariana Islands.

U: Unavailable. —: No reported cases. N: Not reportable. NN: Not Nationally Notifiable. Cum: Cumulative year-to-date counts. Med: Median. Max: Maximum.

\* Case counts for reporting year 2014 are provisional and subject to change. For further information on interpretation of these data, see <http://www.cdc.gov/nndss/document/ProvisionalNationalNotifiableDiseasesSurveillanceData20100927.pdf>. Data for TB are displayed in Table IV, which appears quarterly.

† Includes drug resistant and susceptible cases of Invasive Pneumococcal Disease. This condition was previously named Streptococcus pneumoniae invasive disease and cases were reported to CDC using different event codes to specify whether the cases were drug resistant or in a defined age group, such as <5 years. Since 2010, case notifications for this condition were consolidated under one event code for Invasive pneumococcal disease.



Morbidity and Mortality Weekly Report

TABLE II. (Continued) Provisional cases of selected notifiable diseases, United States, weeks ending December 27, 2014, and December 28, 2013 (52nd week)\* (Export data)

Reporting area	Lyme disease					Malaria					Meningococcal disease, invasive† All serogroups				
	Current week	Previous 52 weeks		Cum 2014	Cum 2013	Current week	Previous 52 weeks		Cum 2014	Cum 2013	Current week	Previous 52 weeks		Cum 2014	Cum 2013
		Med	Max				Med	Max				Med	Max		
<b>United States</b>	51	385	1,791	29,081	36,307	2	25	51	1,398	1,594	3	7	24	386	556
<b>New England</b>	—	103	691	9,642	12,892	—	2	7	94	130	1	0	3	14	25
Connecticut	—	19	170	2,030	2,925	—	0	2	8	20	—	0	1	1	3
Maine	—	14	90	1,322	1,373	—	0	1	6	10	1	0	1	2	4
Massachusetts	—	41	388	4,332	5,290	—	1	5	50	71	—	0	1	10	11
New Hampshire	—	5	62	619	1,687	—	0	2	7	10	—	0	0	—	2
Rhode Island	—	8	83	762	724	—	0	3	19	14	—	0	1	1	1
Vermont	—	8	48	577	893	—	0	2	4	5	—	0	1	—	4
<b>Mid. Atlantic</b>	44	195	921	14,162	14,139	—	7	23	394	418	—	1	3	40	82
New Jersey	—	39	191	2,821	3,766	—	1	5	71	93	—	0	1	8	20
New York (Upstate)	16	47	226	2,891	3,872	—	1	4	58	58	—	0	3	8	24
New York City	1	3	441	747	743	—	3	16	188	196	—	0	2	11	16
Pennsylvania	27	78	602	7,703	5,758	—	1	5	77	71	—	0	2	13	22
<b>E.N. Central</b>	—	13	128	1,633	2,580	—	2	8	115	149	—	1	4	46	52
Illinois	—	1	20	197	337	—	1	4	43	64	—	0	2	11	10
Indiana	—	0	11	76	110	—	0	3	17	20	—	0	1	4	15
Michigan	—	2	13	142	168	—	0	2	12	21	—	0	2	11	4
Ohio	—	1	10	113	93	—	1	3	37	33	—	0	2	12	10
Wisconsin	—	10	97	1,105	1,872	—	0	2	6	11	—	0	1	8	13
<b>W.N. Central</b>	—	3	22	257	2,667	1	1	4	64	109	—	0	3	20	38
Iowa	—	1	20	190	247	—	0	2	15	12	—	0	1	2	1
Kansas	—	0	2	16	34	—	0	2	9	8	—	0	1	1	3
Minnesota	—	0	14	3	2,340	—	0	1	2	67	—	0	1	5	12
Missouri	—	0	2	14	3	1	0	1	15	6	—	0	1	8	10
Nebraska	—	0	4	16	10	—	0	2	9	6	—	0	0	—	5
North Dakota	—	0	2	16	29	—	0	1	9	3	—	0	1	2	3
South Dakota	—	0	1	2	4	—	0	1	5	7	—	0	1	2	4
<b>S. Atlantic</b>	7	42	309	3,090	3,559	—	7	18	387	403	2	2	6	98	98
Delaware	—	6	24	390	509	—	0	1	2	9	—	0	1	1	2
District of Columbia	—	0	4	29	35	—	0	2	13	13	—	0	1	1	—
Florida	2	2	12	138	138	—	1	4	51	54	1	1	4	50	58
Georgia	—	0	1	1	8	—	1	5	72	67	1	0	2	13	12
Maryland	1	14	62	1,087	1,197	—	2	9	137	147	—	0	1	7	3
North Carolina	—	0	78	149	180	—	0	8	35	27	—	0	3	13	10
South Carolina	—	1	3	35	42	—	0	1	5	9	—	0	2	4	4
Virginia	4	16	267	1,135	1,307	—	1	5	70	75	—	0	2	8	7
West Virginia	—	1	14	126	143	—	0	1	2	2	—	0	1	1	2
<b>E.S. Central</b>	—	1	10	119	89	—	1	5	41	33	—	0	2	19	16
Alabama	—	0	7	57	24	—	0	3	13	2	—	0	1	7	5
Kentucky	—	0	5	43	40	—	0	2	10	9	—	0	1	3	1
Mississippi	—	0	1	2	—	—	0	1	1	3	—	0	1	1	4
Tennessee	—	0	3	17	25	—	0	2	17	19	—	0	2	8	6
<b>W.S. Central</b>	—	0	13	33	85	—	2	21	125	115	—	1	6	36	59
Arkansas	—	0	0	—	—	—	0	1	4	2	—	0	1	1	7
Louisiana	—	0	1	2	—	—	0	1	12	9	—	0	1	6	16
Oklahoma	—	0	2	—	3	—	0	3	9	14	—	0	2	9	6
Texas	—	0	11	31	82	—	1	19	100	90	—	0	5	20	30
<b>Mountain</b>	—	1	7	52	109	—	1	6	47	86	—	0	3	27	40
Arizona	—	0	5	20	32	—	0	3	19	33	—	0	2	9	12
Colorado	—	0	0	—	—	—	0	3	7	32	—	0	1	3	9
Idaho	—	0	1	8	19	—	0	1	3	5	—	0	1	5	4
Montana	—	0	2	7	18	—	0	1	2	—	—	0	1	4	1
Nevada	—	0	2	6	16	—	0	2	10	8	—	0	1	3	1
New Mexico	—	0	0	—	6	—	0	1	2	1	—	0	1	2	2
Utah	—	0	2	9	15	—	0	1	4	7	—	0	1	1	9
Wyoming	—	0	1	2	3	—	0	0	—	—	—	0	0	—	2
<b>Pacific</b>	—	2	5	93	187	1	3	6	131	151	—	1	7	86	146
Alaska	—	0	1	7	14	—	0	1	2	4	—	0	0	—	—
California	—	0	3	31	112	—	1	4	68	103	—	1	5	55	113
Hawaii	N	0	0	N	N	—	0	1	5	1	—	0	1	2	1
Oregon	—	1	3	43	43	1	0	2	17	13	—	0	3	18	12
Washington	—	0	4	12	18	—	0	3	39	30	—	0	4	11	20
<b>Territories</b>															
American Samoa	N	—	—	N	N	—	—	—	—	—	—	—	—	—	—
C.N.M.I.	—	—	—	—	—	—	—	—	—	—	—	—	—	—	—
Guam	—	0	0	—	—	—	0	0	—	—	—	0	0	—	1
Puerto Rico	N	0	0	N	N	—	0	1	1	—	—	0	1	1	1
U.S. Virgin Islands	N	0	0	N	N	—	0	0	—	—	—	0	0	—	—

C.N.M.I.: Commonwealth of Northern Mariana Islands.

U: Unavailable. —: No reported cases. N: Not reportable. NN: Not Nationally Notifiable. Cum: Cumulative year-to-date counts. Med: Median. Max: Maximum.

\* Case counts for reporting year 2014 are provisional and subject to change. For further information on interpretation of these data, see <http://www.cdc.gov/nndss/document/ProvisionalNationalNotifiableDiseasesSurveillanceData201100927.pdf>. Data for TB are displayed in Table IV, which appears quarterly.

† Data for meningococcal disease, invasive caused by serogroups A, C, Y, and W-135; serogroup B; other serogroup; and unknown serogroup are available in Table I.

Morbidity and Mortality Weekly Report

TABLE II. (Continued) Provisional cases of selected notifiable diseases, United States, weeks ending December 27, 2014, and December 28, 2013 (52nd week)\* (Export data)

Reporting area	Mumps					Pertussis					Rabies, animal				
	Current week	Previous 52 weeks		Cum 2014	Cum 2013	Current week	Previous 52 weeks		Cum 2014	Cum 2013	Current week	Previous 52 weeks		Cum 2014	Cum 2013
		Med	Max				Med	Max				Med	Max		
<b>United States</b>	3	10	117	1,100	584	168	500	1,036	27,878	28,639	11	57	137	2,842	3,833
<b>New England</b>	—	0	2	7	79	11	18	45	1,000	1,147	—	5	16	307	307
Connecticut	—	0	0	—	4	—	1	6	65	61	—	2	13	176	148
Maine	—	0	0	—	1	11	7	30	507	332	—	1	3	43	50
Massachusetts	—	0	2	5	69	—	4	12	219	349	—	0	0	—	—
New Hampshire	—	0	2	2	1	—	1	5	74	131	—	0	2	15	30
Rhode Island	—	0	0	—	3	—	0	23	93	160	—	0	4	20	28
Vermont	—	0	0	—	1	—	0	5	42	114	—	1	4	53	51
<b>Mid. Atlantic</b>	1	2	25	174	146	31	35	73	1,981	1,903	4	7	15	361	742
New Jersey	—	0	9	32	80	—	6	15	280	406	—	0	0	—	—
New York (Upstate)	1	0	1	10	10	19	16	51	843	722	4	6	15	361	335
New York City	—	1	24	118	35	—	2	6	103	142	—	0	2	—	56
Pennsylvania	—	0	4	14	21	12	14	36	755	633	—	0	9	—	351
<b>E.N. Central</b>	1	5	107	774	50	34	89	164	4,818	5,111	—	1	12	100	166
Illinois	—	1	15	128	26	—	12	31	624	785	—	0	6	40	54
Indiana	—	0	3	23	4	—	8	21	420	616	—	0	4	4	10
Michigan	—	0	2	16	6	7	22	52	1,231	988	—	0	4	35	41
Ohio	1	2	97	545	12	26	25	82	1,449	1,464	—	0	5	21	61
Wisconsin	—	0	10	62	2	1	22	56	1,094	1,258	N	0	0	N	N
<b>W.N. Central</b>	—	0	6	35	15	29	39	67	2,029	2,523	—	2	8	122	223
Iowa	—	0	1	6	3	—	3	11	183	308	—	0	0	—	—
Kansas	—	0	1	2	—	—	6	18	329	405	—	1	5	56	60
Minnesota	—	0	6	20	3	—	11	27	507	865	—	0	2	—	62
Missouri	—	0	2	6	8	1	9	23	504	559	—	0	3	26	39
Nebraska	—	0	0	—	—	28	4	35	353	232	—	0	3	19	34
North Dakota	—	0	1	1	1	—	0	8	45	87	—	0	0	—	—
South Dakota	—	0	0	—	—	—	1	11	108	67	—	0	2	21	28
<b>S. Atlantic</b>	1	0	9	42	214	14	56	102	2,758	2,599	—	8	92	473	859
Delaware	—	0	0	—	—	—	1	35	205	57	—	0	0	—	—
District of Columbia	—	0	4	16	1	1	0	3	22	42	U	0	0	U	U
Florida	—	0	1	1	1	4	12	32	712	732	—	0	87	94	103
Georgia	—	0	0	—	10	—	6	17	321	317	—	0	8	—	302
Maryland	—	0	1	2	87	1	2	17	168	213	—	6	19	341	376
North Carolina	—	0	2	3	4	5	11	60	702	583	—	0	0	—	—
South Carolina	—	0	1	2	2	—	3	9	157	218	—	0	0	—	—
Virginia	—	0	8	17	109	3	9	30	455	418	—	0	0	—	—
West Virginia	1	0	0	1	—	—	0	3	16	19	—	1	5	38	78
<b>E.S. Central</b>	—	0	2	8	13	2	18	30	927	889	—	1	7	72	59
Alabama	—	0	1	2	4	1	5	13	277	200	—	1	7	63	39
Kentucky	—	0	1	2	2	—	5	17	268	383	—	0	2	8	15
Mississippi	—	0	0	—	—	—	1	5	68	59	—	0	1	1	5
Tennessee	—	0	1	4	7	1	5	16	314	247	—	0	0	—	—
<b>W.S. Central</b>	—	0	3	20	19	21	55	499	2,799	4,920	7	22	77	1,126	1,180
Arkansas	—	0	1	1	3	—	5	30	258	466	—	1	23	148	152
Louisiana	—	0	0	—	2	—	1	6	73	214	—	0	0	—	7
Oklahoma	—	0	2	4	1	—	0	112	122	255	—	1	17	96	84
Texas	—	0	3	15	13	21	47	353	2,346	3,985	7	18	72	882	937
<b>Mountain</b>	—	0	3	26	13	7	73	114	3,642	5,935	—	0	7	52	72
Arizona	—	0	2	9	1	—	7	27	438	1,440	N	0	0	N	N
Colorado	—	0	1	2	4	—	22	46	1,054	1,418	—	0	0	—	—
Idaho	—	0	3	11	—	4	7	23	360	237	—	0	2	10	27
Montana	—	0	0	—	—	3	8	25	475	663	N	0	0	N	N
Nevada	—	0	1	2	5	—	2	8	119	181	—	0	4	11	13
New Mexico	—	0	1	1	1	—	6	17	333	613	—	0	2	9	11
Utah	—	0	1	1	2	—	17	38	810	1,308	—	0	4	22	12
Wyoming	—	0	0	—	—	—	0	6	53	75	—	0	1	—	9
<b>Pacific</b>	—	0	5	14	35	19	117	331	7,924	3,612	—	5	21	229	225
Alaska	—	0	1	1	—	5	2	17	158	317	—	0	1	3	7
California	—	0	5	6	30	—	102	305	6,870	2,011	—	3	21	212	196
Hawaii	—	0	1	1	—	—	0	4	36	50	—	0	0	—	—
Oregon	—	0	1	1	3	4	8	16	397	486	—	0	3	14	10
Washington	—	0	1	5	2	10	7	50	463	748	—	0	12	—	12
<b>Territories</b>	—	—	—	—	—	—	—	—	—	—	—	—	—	—	—
American Samoa	—	—	—	—	—	—	—	—	—	—	N	—	—	N	N
C.N.M.I.	—	—	—	—	—	—	—	—	—	—	—	—	—	—	—
Guam	—	0	0	—	8	—	0	0	—	—	—	0	0	—	—
Puerto Rico	—	0	0	—	3	—	0	2	9	34	—	1	5	47	54
U.S. Virgin Islands	—	0	0	—	—	—	0	0	—	—	—	0	0	—	—

C.N.M.I.: Commonwealth of Northern Mariana Islands.

U: Unavailable. —: No reported cases. N: Not reportable. NN: Not Nationally Notifiable. Cum: Cumulative year-to-date counts. Med: Median. Max: Maximum.

\* Case counts for reporting year 2014 are provisional and subject to change. For further information on interpretation of these data, see <http://www.cdc.gov/nndss/document/ProvisionalNationalNotifiableDiseasesSurveillanceData20100927.pdf>. Data for TB are displayed in Table IV, which appears quarterly.

Morbidity and Mortality Weekly Report

TABLE II. (Continued) Provisional cases of selected notifiable diseases, United States, weeks ending December 27, 2014, and December 28, 2013 (52nd week)\* (Export data)

Reporting area	Salmonellosis					Shiga toxin-producing <i>E. coli</i> (STEC) <sup>†</sup>					Shigellosis				
	Current week	Previous 52 weeks		Cum 2014	Cum 2013	Current week	Previous 52 weeks		Cum 2014	Cum 2013	Current week	Previous 52 weeks		Cum 2014	Cum 2013
		Med	Max				Med	Max				Med	Max		
<b>United States</b>	221	830	1,574	46,917	50,634	11	92	194	4,987	6,663	100	383	741	18,029	12,729
<b>New England</b>	1	38	86	2,090	2,116	—	3	16	209	256	—	6	14	301	515
Connecticut	—	8	23	426	426	—	1	4	55	71	—	1	5	59	57
Maine	—	2	6	126	131	—	0	4	32	27	—	0	3	29	5
Massachusetts	—	21	52	1,146	1,143	—	1	6	89	108	—	3	9	170	174
New Hampshire	—	3	8	170	213	—	0	2	14	27	—	0	2	13	8
Rhode Island	1	2	12	131	128	—	0	2	4	3	—	0	7	26	268
Vermont	—	1	7	91	75	—	0	2	15	20	—	0	2	4	3
<b>Mid. Atlantic</b>	34	78	185	4,548	5,112	5	9	26	503	725	26	18	43	999	871
New Jersey	—	16	50	974	1,062	—	2	8	93	137	—	3	13	210	137
New York (Upstate)	14	23	76	1,275	1,298	3	3	15	190	221	6	4	29	246	273
New York City	12	18	35	929	1,131	1	1	5	68	88	19	7	22	372	315
Pennsylvania	8	21	68	1,370	1,621	1	3	9	152	279	1	3	14	171	146
<b>E.N. Central</b>	12	91	198	4,874	5,561	2	11	35	698	1,031	13	55	120	3,039	1,348
Illinois	—	29	65	1,610	1,783	—	3	11	172	279	—	11	34	659	312
Indiana	—	11	36	586	705	—	1	9	91	121	—	23	72	1,174	117
Michigan	—	17	56	997	997	—	2	8	132	184	1	4	19	288	169
Ohio	12	23	46	1,190	1,181	2	3	12	202	222	8	11	22	600	714
Wisconsin	—	10	25	491	895	—	1	12	101	225	4	5	20	318	36
<b>W.N. Central</b>	12	38	79	2,235	3,235	—	10	35	659	1,009	15	47	93	2,422	870
Iowa	1	10	24	514	575	—	2	14	215	171	—	3	14	206	342
Kansas	—	8	21	418	423	—	1	7	84	89	—	1	4	51	40
Minnesota	—	0	7	—	799	—	0	0	—	305	—	0	6	—	132
Missouri	11	16	36	815	847	—	4	14	193	276	14	24	63	1,330	89
Nebraska	—	4	13	249	307	—	2	9	105	82	1	3	18	206	63
North Dakota	—	2	8	85	102	—	0	3	23	43	—	0	2	20	18
South Dakota	—	2	12	154	182	—	0	4	39	43	—	11	32	609	186
<b>S. Atlantic</b>	73	234	551	13,605	13,710	—	10	24	526	549	22	85	160	4,436	2,483
Delaware	—	2	14	153	121	—	0	2	14	15	—	1	4	70	14
District of Columbia	—	0	5	38	52	—	0	1	5	5	—	1	4	47	15
Florida	57	104	226	5,916	6,133	—	3	9	170	121	14	45	95	2,373	1,018
Georgia	6	31	91	2,074	2,281	—	1	7	82	121	5	16	27	838	886
Maryland	4	14	50	869	862	—	1	5	76	64	1	5	12	250	107
North Carolina	4	30	190	1,975	1,877	—	1	4	45	71	1	4	119	498	201
South Carolina	—	18	79	1,373	1,399	—	0	2	15	8	—	2	13	148	120
Virginia	2	18	58	1,053	1,051	—	2	6	103	109	1	4	15	201	115
West Virginia	—	3	11	154	194	—	0	2	16	35	—	0	2	11	7
<b>E.S. Central</b>	2	57	152	3,566	3,397	1	4	15	298	327	2	31	59	1,652	1,264
Alabama	—	18	54	1,096	1,086	—	0	3	40	53	—	6	27	396	313
Kentucky	—	10	27	548	526	—	1	7	86	110	—	4	15	246	63
Mississippi	—	13	56	966	917	—	0	3	31	30	—	4	11	200	222
Tennessee	2	15	40	956	868	1	2	9	141	134	2	16	31	810	666
<b>W.S. Central</b>	37	141	724	6,859	7,845	2	13	50	710	813	11	62	463	3,135	3,320
Arkansas	1	12	29	654	706	—	2	5	80	76	3	7	197	769	273
Louisiana	3	15	50	1,069	1,282	—	0	2	15	24	1	2	10	136	451
Oklahoma	5	14	151	768	911	2	2	12	118	107	7	1	41	98	210
Texas	28	89	543	4,368	4,946	—	9	40	497	606	—	43	393	2,132	2,386
<b>Mountain</b>	2	51	92	2,665	3,133	1	8	23	447	791	2	13	23	649	770
Arizona	1	17	40	987	1,010	—	1	5	66	246	2	6	18	333	428
Colorado	—	10	27	501	631	—	1	9	50	186	—	1	6	73	113
Idaho	1	3	9	171	134	—	2	9	112	106	—	0	3	12	11
Montana	—	2	8	137	93	1	0	4	39	49	—	0	7	35	69
Nevada	—	3	8	162	522	—	0	5	32	59	—	0	6	35	54
New Mexico	—	6	16	303	350	—	1	6	45	30	—	1	6	55	60
Utah	—	6	17	358	322	—	1	6	86	84	—	1	4	34	25
Wyoming	—	0	4	46	71	—	0	3	17	31	—	0	6	72	10
<b>Pacific</b>	48	124	243	6,475	6,525	—	17	59	937	1,162	9	26	59	1,396	1,288
Alaska	3	1	6	72	87	—	0	0	—	—	—	0	1	5	1
California	41	97	209	5,045	5,043	—	10	26	522	623	9	21	50	1,189	1,068
Hawaii	—	6	15	301	349	—	0	4	20	28	—	0	2	19	42
Oregon	3	7	17	385	375	—	2	9	168	189	—	1	6	48	55
Washington	1	14	47	672	671	—	1	33	227	322	—	2	12	135	122
<b>Territories</b>															
American Samoa	—	—	—	—	—	—	—	—	—	—	—	—	—	—	—
C.N.M.I.	—	—	—	—	—	—	—	—	—	—	—	—	—	—	—
Guam	—	0	0	—	18	—	0	0	—	82	—	0	0	—	7
Puerto Rico	—	8	28	469	586	—	0	2	4	7	—	0	2	14	4
U.S. Virgin Islands	—	0	0	—	—	—	0	0	—	—	—	0	0	—	—

C.N.M.I.: Commonwealth of Northern Mariana Islands.

U: Unavailable. —: No reported cases. N: Not reportable. NN: Not Nationally Notifiable. Cum: Cumulative year-to-date counts. Med: Median. Max: Maximum.

\* Case counts for reporting year 2014 are provisional and subject to change. For further information on interpretation of these data, see <http://www.cdc.gov/nndss/document/ProvisionalNationalNotifiableDiseasesSurveillanceData20100927.pdf>. Data for TB are displayed in Table IV, which appears quarterly.

† Includes *E. coli* O157:H7; Shiga toxin-positive, serogroup non-O157; and Shiga toxin-positive, not serogrouped.

Morbidity and Mortality Weekly Report

TABLE II. (Continued) Provisional cases of selected notifiable diseases, United States, weeks ending December 27, 2014, and December 28, 2013 (52nd week)\* (Export data)

Reporting area	Spotted Fever Rickettsiosis (including RMSF)†										Syphilis, primary and secondary				
	Confirmed					Probable									
	Current week	Previous 52 weeks		Cum 2014	Cum 2013	Current week	Previous 52 weeks		Cum 2014	Cum 2013	Current week	Previous 52 weeks		Cum 2014	Cum 2013
	Med	Max				Med	Max				Med	Max			
<b>United States</b>	—	1	10	101	172	4	56	238	3,266	3,181	54	357	433	17,628	17,207
<b>New England</b>	—	0	1	1	1	—	0	1	11	8	—	8	17	447	502
Connecticut	—	0	0	—	—	—	0	1	1	—	—	1	5	76	56
Maine	—	0	0	—	—	—	0	1	3	2	—	0	4	12	10
Massachusetts	—	0	0	—	—	—	0	1	6	1	—	5	13	260	360
New Hampshire	—	0	1	1	1	—	0	1	1	3	—	0	3	29	28
Rhode Island	—	0	0	—	—	—	0	0	—	2	—	1	5	68	45
Vermont	—	0	0	—	—	—	0	0	—	—	—	0	1	2	3
<b>Mid. Atlantic</b>	—	0	2	4	4	—	2	8	93	82	10	47	73	2,333	2,163
New Jersey	—	0	0	—	2	—	1	7	57	40	—	5	13	241	233
New York (Upstate)	—	0	2	3	1	—	0	6	18	24	6	7	48	380	298
New York City	—	0	0	—	1	—	0	2	10	2	1	24	38	1,222	1,161
Pennsylvania	—	0	1	1	—	—	0	2	8	16	3	9	19	490	471
<b>E.N. Central</b>	—	0	2	5	7	1	2	12	144	164	—	32	59	1,565	2,031
Illinois	—	0	1	3	3	—	1	10	92	99	—	10	20	542	798
Indiana	—	0	2	2	2	—	0	4	31	30	—	3	8	167	215
Michigan	—	0	0	—	—	—	0	1	2	3	—	6	17	302	487
Ohio	—	0	0	—	1	1	0	2	12	22	—	9	17	481	436
Wisconsin	—	0	0	—	1	—	0	2	7	10	—	1	5	73	95
<b>W.N. Central</b>	—	0	2	12	9	—	2	21	288	281	2	16	29	771	698
Iowa	—	0	0	—	—	—	0	2	10	8	—	1	5	63	106
Kansas	—	0	0	—	—	—	0	0	—	—	—	1	4	61	51
Minnesota	—	0	0	—	1	—	0	0	—	14	—	4	10	229	193
Missouri	—	0	1	5	2	—	2	19	265	241	2	6	13	321	251
Nebraska	—	0	1	4	5	—	0	2	10	10	—	1	3	36	41
North Dakota	—	0	1	2	—	—	0	1	1	2	—	0	2	13	12
South Dakota	—	0	1	1	1	—	0	1	2	6	—	1	6	48	44
<b>S. Atlantic</b>	—	0	4	37	107	1	10	92	908	865	13	90	215	4,384	4,043
Delaware	—	0	0	—	—	—	0	3	24	11	1	0	9	46	52
District of Columbia	—	0	0	—	5	—	0	0	—	1	U	0	0	U	U
Florida	—	0	1	1	4	—	0	3	36	20	—	31	49	1,592	1,513
Georgia	—	0	3	18	81	—	0	0	—	—	7	22	151	1,137	1,017
Maryland	—	0	1	3	—	1	0	3	18	8	—	8	14	406	456
North Carolina	—	0	2	10	11	—	3	66	453	415	1	13	28	651	404
South Carolina	—	0	1	1	1	—	0	4	30	59	3	4	10	240	271
Virginia	—	0	1	4	4	—	4	23	342	346	1	5	18	287	315
West Virginia	—	0	0	—	1	—	0	3	5	5	—	0	2	25	15
<b>E.S. Central</b>	—	0	4	27	16	1	11	52	822	897	1	13	30	673	597
Alabama	—	0	2	8	1	—	3	12	207	254	—	3	8	143	183
Kentucky	—	0	0	—	2	—	1	5	51	68	—	3	8	145	122
Mississippi	—	0	1	5	1	—	0	5	34	38	—	3	27	194	78
Tennessee	—	0	2	14	12	1	5	42	530	537	1	3	10	191	214
<b>W.S. Central</b>	—	0	1	5	15	1	16	99	973	794	18	45	64	2,331	2,193
Arkansas	—	0	1	1	4	1	13	57	734	476	18	1	9	121	177
Louisiana	—	0	0	—	—	—	0	2	17	5	—	9	22	488	423
Oklahoma	—	0	1	4	10	—	0	55	133	231	—	2	9	130	118
Texas	—	0	0	—	1	—	1	16	89	82	—	30	50	1,592	1,475
<b>Mountain</b>	—	0	1	3	11	—	0	2	15	73	—	24	33	1,188	828
Arizona	—	0	0	—	9	—	0	2	7	54	—	10	22	515	287
Colorado	—	0	0	—	—	—	0	0	—	6	—	3	9	173	163
Idaho	—	0	0	—	1	—	0	0	—	—	—	0	2	10	15
Montana	—	0	1	1	—	—	0	1	3	2	—	0	2	11	5
Nevada	—	0	0	—	—	—	0	1	1	1	—	6	20	339	205
New Mexico	—	0	1	1	1	—	0	1	1	3	—	2	6	111	78
Utah	—	0	1	1	—	—	0	1	3	5	—	0	3	28	74
Wyoming	—	0	0	—	—	—	0	0	—	2	—	0	1	1	1
<b>Pacific</b>	—	0	1	7	2	—	0	2	12	17	10	80	106	3,936	4,152
Alaska	N	0	0	N	N	N	0	0	N	N	—	0	2	16	23
California	—	0	1	6	1	—	0	1	9	14	7	71	96	3,465	3,532
Hawaii	N	0	0	N	N	N	0	0	N	N	—	1	5	61	46
Oregon	—	0	1	1	1	—	0	1	3	1	1	5	12	251	267
Washington	—	0	0	—	—	—	0	2	—	2	2	3	10	143	284
<b>Territories</b>															
American Samoa	N	—	—	N	N	N	—	—	N	N	—	—	—	—	—
C.N.M.I.	—	—	—	—	—	—	—	—	—	—	—	—	—	—	—
Guam	N	0	0	N	N	N	0	0	N	N	—	0	0	—	—
Puerto Rico	N	0	0	N	N	N	0	0	N	N	—	8	31	464	385
U.S. Virgin Islands	N	0	0	N	N	N	0	0	N	N	—	0	1	1	1

C.N.M.I.: Commonwealth of Northern Mariana Islands.

U: Unavailable. —: No reported cases. N: Not reportable. NN: Not Nationally Notifiable. Cum: Cumulative year-to-date counts. Med: Median. Max: Maximum.

\* Case counts for reporting year 2014 are provisional and subject to change. For further information on interpretation of these data, see <http://www.cdc.gov/nndss/document/ProvisionalNationalNotifiableDiseasesSurveillanceData20100927.pdf>. Data for TB are displayed in Table IV, which appears quarterly.

† Illnesses with similar clinical presentation that result from Spotted fever group rickettsia infections are reported as Spotted fever rickettsioses. Rocky Mountain spotted fever (RMSF) caused by *Rickettsia rickettsii*, is the most common and well-known spotted fever.

TABLE II. (Continued) Provisional cases of selected notifiable diseases, United States, weeks ending December 27, 2014, and December 28, 2013 (52nd week)\* (Export data)

Reporting area	West Nile virus disease <sup>†</sup>														
	Varicella (chickenpox)					Neuroinvasive					Nonneuroinvasive <sup>‡</sup>				
	Current week	Previous 52 weeks		Cum 2014	Cum 2013	Current week	Previous 52 weeks		Cum 2014	Cum 2013	Current week	Previous 52 weeks		Cum 2014	Cum 2013
	Med	Max				Med	Max				Med	Max			
<b>United States</b>	47	179	274	9,041	11,359	—	1	127	1,227	1,267	—	1	98	836	1,202
<b>New England</b>	2	19	39	999	1,116	—	0	2	8	11	—	0	2	4	5
Connecticut	—	4	8	182	223	—	0	2	3	1	—	0	2	3	3
Maine	2	3	11	202	140	—	0	0	—	—	—	0	0	—	—
Massachusetts	—	8	18	412	510	—	0	1	5	7	—	0	1	1	1
New Hampshire	—	1	5	57	104	—	0	0	—	1	—	0	0	—	—
Rhode Island	—	0	3	29	39	—	0	0	—	1	—	0	0	—	—
Vermont	—	1	11	117	100	—	0	0	—	1	—	0	0	—	1
<b>Mid. Atlantic</b>	7	20	37	1,010	1,204	—	0	7	22	34	—	0	3	14	21
New Jersey	—	4	14	227	419	—	0	1	2	10	—	0	1	2	2
New York (Upstate)	N	0	0	N	N	—	0	0	—	10	—	0	2	8	12
New York City	—	0	0	—	—	—	0	3	9	8	—	0	2	3	2
Pennsylvania	7	16	29	783	785	—	0	4	11	6	—	0	1	1	5
<b>E.N. Central</b>	8	46	75	2,435	2,834	—	0	10	50	167	—	0	4	18	54
Illinois	—	11	23	579	731	—	0	9	27	86	—	0	4	13	31
Indiana	1	5	22	312	321	—	0	3	8	19	—	0	1	1	4
Michigan	2	10	33	602	722	—	0	1	1	24	—	0	0	—	12
Ohio	5	10	22	539	661	—	0	4	10	21	—	0	1	1	3
Wisconsin	—	7	15	403	399	—	0	2	4	17	—	0	2	3	4
<b>W.N. Central</b>	2	9	23	469	1,237	—	0	14	102	288	—	0	32	213	455
Iowa	N	0	0	N	N	—	0	3	5	24	—	0	2	10	20
Kansas	—	0	4	—	434	—	0	3	15	34	—	0	8	33	57
Minnesota	—	4	11	219	478	—	0	2	5	31	—	0	3	15	48
Missouri	2	3	16	196	230	—	0	2	12	24	—	0	1	1	5
Nebraska	—	0	3	12	16	—	0	9	41	54	—	0	19	99	172
North Dakota	—	0	3	19	36	—	0	3	12	64	—	0	3	10	61
South Dakota	—	0	3	23	43	—	0	3	12	57	—	0	11	45	92
<b>S. Atlantic</b>	12	22	46	1,172	1,404	—	0	6	31	36	—	0	3	10	18
Delaware	—	0	2	15	23	—	0	0	—	3	—	0	0	—	—
District of Columbia	—	0	0	—	10	—	0	1	1	—	—	0	1	2	1
Florida	12	10	28	563	659	—	0	2	10	5	—	0	1	4	2
Georgia	—	1	6	59	54	—	0	2	9	4	—	0	1	2	6
Maryland	N	0	0	N	N	—	0	2	5	11	—	0	0	—	5
North Carolina	—	0	0	—	—	—	0	0	—	3	—	0	0	—	—
South Carolina	—	2	11	142	168	—	0	1	2	3	—	0	0	—	4
Virginia	—	5	17	240	374	—	0	1	4	6	—	0	1	2	—
West Virginia	—	2	9	153	116	—	0	0	—	1	—	0	0	—	—
<b>E.S. Central</b>	—	2	8	105	165	—	0	5	37	48	—	0	3	24	33
Alabama	—	1	8	101	160	—	0	0	—	3	—	0	1	2	6
Kentucky	N	0	0	N	N	—	0	0	—	1	—	0	1	1	2
Mississippi	—	0	1	4	5	—	0	5	26	27	—	0	2	17	18
Tennessee	N	0	0	N	N	—	0	2	11	17	—	0	1	4	7
<b>W.S. Central</b>	11	35	107	1,781	2,185	—	0	33	292	223	—	0	29	182	121
Arkansas	—	3	24	219	249	—	0	1	5	16	—	0	1	2	2
Louisiana	—	0	4	32	62	—	0	7	47	34	—	0	11	54	20
Oklahoma	N	0	0	N	N	—	0	2	8	60	—	0	3	9	29
Texas	11	31	98	1,530	1,874	—	0	26	232	113	—	0	18	117	70
<b>Mountain</b>	5	16	53	925	1,093	—	0	21	147	216	—	0	23	114	343
Arizona	—	4	22	297	354	—	0	8	72	50	—	0	4	19	12
Colorado	5	3	27	307	353	—	0	11	45	90	—	0	17	69	232
Idaho	N	0	0	N	N	—	0	1	5	14	—	0	4	13	26
Montana	—	1	5	70	84	—	0	2	3	10	—	0	1	2	28
Nevada	N	0	0	N	N	—	0	1	3	8	—	0	0	—	3
New Mexico	—	1	5	51	66	—	0	5	19	24	—	0	4	5	14
Utah	—	4	9	195	227	—	0	0	—	4	—	0	1	1	3
Wyoming	—	0	1	5	9	—	0	0	—	16	—	0	2	5	25
<b>Pacific</b>	—	3	9	145	121	—	0	57	538	244	—	0	28	257	152
Alaska	—	0	8	70	61	—	0	0	—	—	—	0	0	—	—
California	—	0	3	29	30	—	0	57	531	237	—	0	27	251	142
Hawaii	—	1	4	46	30	—	0	0	—	—	—	0	0	—	—
Oregon	N	0	0	N	N	—	0	0	—	7	—	0	1	1	9
Washington	N	0	0	N	N	—	0	1	7	—	—	0	2	5	1
<b>Territories</b>															
American Samoa	N	—	—	N	N	—	—	—	—	—	—	—	—	—	—
C.N.M.I.	—	—	—	—	—	—	—	—	—	—	—	—	—	—	—
Guam	—	0	0	—	57	—	0	0	—	—	—	0	0	—	—
Puerto Rico	—	3	12	191	305	—	0	0	—	—	—	0	0	—	—
U.S. Virgin Islands	—	0	0	—	—	—	0	0	—	—	—	0	0	—	—

C.N.M.I.: Commonwealth of Northern Mariana Islands.

U: Unavailable. —: No reported cases. N: Not reportable. NN: Not Nationally Notifiable. Cum: Cumulative year-to-date counts. Med: Median. Max: Maximum.

\* Case counts for reporting year 2014 are provisional and subject to change. For further information on interpretation of these data, see <http://www.cdc.gov/nndss/document/ProvisionalNationalNotifiableDiseasesSurveillanceData20100927.pdf>. Data for TB are displayed in Table IV, which appears quarterly.

† Updated weekly from reports to the Division of Vector-Borne Infectious Diseases, National Center for Zoonotic, Vector-Borne, and Enteric Diseases (ArboNET Surveillance). Data for California serogroup, eastern equine, Powassan, St. Louis, and western equine diseases are available in Table I.

‡ Not reportable in all states. Data from states where the condition is not reportable are excluded from this table, except starting in 2007 for the domestic arboviral diseases and influenza-associated pediatric mortality, and in 2003 for SARS-CoV. Reporting exceptions are available at [http://www.cdc.gov/nndss/document/SRCA\\_FINAL\\_REPORT\\_2006-2012\\_final.xlsx](http://www.cdc.gov/nndss/document/SRCA_FINAL_REPORT_2006-2012_final.xlsx).

Morbidity and Mortality Weekly Report

TABLE III. Deaths in 122 U.S. cities,\* week ending December 27, 2014 (52nd week) (Export data)

Reporting area	All causes, by age (years)						P&I†	Total	Reporting area (Continued)	All causes, by age (years)						P&I†	Total
	All Ages	≥65	45-64	25-44	1-24	<1				All Ages	≥65	45-64	25-44	1-24	<1		
<b>New England</b>	395	264	91	27	10	3	26	<b>S. Atlantic</b>	918	595	224	54	20	24	52		
Boston, MA	107	67	24	9	6	1	7	Atlanta, GA	110	63	35	6	3	3	5		
Bridgeport, CT	25	17	5	2	—	1	1	Baltimore, MD	172	107	41	12	3	9	5		
Cambridge, MA	8	7	—	1	—	—	1	Charlotte, NC	91	69	15	5	1	1	10		
Fall River, MA	17	10	6	1	—	—	—	Jacksonville, FL	119	75	28	12	2	2	6		
Hartford, CT	27	17	9	—	1	—	2	Miami, FL	53	39	10	3	1	—	4		
Lowell, MA	19	13	5	1	—	—	2	Norfolk, VA	32	17	12	1	1	1	2		
Lynn, MA	7	3	3	—	1	—	—	Richmond, VA	36	22	9	1	1	2	1		
New Bedford, MA	9	5	4	—	—	—	1	Savannah, GA	38	25	11	1	1	—	2		
New Haven, CT	U	U	U	U	U	U	U	St. Petersburg, FL	46	33	8	2	1	2	4		
Providence, RI	62	43	11	6	1	1	—	Tampa, FL	80	53	20	2	2	3	3		
Somerville, MA	2	2	—	—	—	—	—	Washington, D.C.	134	88	33	9	3	1	9		
Springfield, MA	40	30	8	2	—	—	—	Wilmington, DE	7	4	2	—	1	—	1		
Waterbury, CT	28	22	4	1	1	—	1	<b>E.S. Central</b>	716	484	177	27	18	10	60		
Worcester, MA	44	28	12	4	—	—	11	Birmingham, AL	153	96	39	9	5	4	8		
<b>Mid. Atlantic</b>	1,783	1,309	345	90	28	11	93	Chattanooga, TN	58	49	8	1	—	—	5		
Albany, NY	50	35	10	3	1	1	3	Knoxville, TN	94	67	24	2	1	—	9		
Allentown, PA	47	35	9	3	—	—	5	Lexington, KY	52	38	11	3	—	—	1		
Buffalo, NY	94	70	18	2	4	—	5	Memphis, TN	140	82	46	6	4	2	19		
Camden, NJ	13	7	5	1	—	—	1	Mobile, AL	48	34	9	1	3	1	5		
Elizabeth, NJ	11	8	3	—	—	—	1	Montgomery, AL	52	33	13	3	3	—	5		
Erie, PA	47	40	4	2	1	—	1	Nashville, TN	119	85	27	2	2	3	8		
Jersey City, NJ	U	U	U	U	U	U	U	<b>W.S. Central</b>	849	547	204	51	17	30	53		
New York City, NY	1,075	779	215	57	18	6	45	Austin, TX	73	48	17	4	2	2	7		
Newark, NJ	39	23	9	6	1	—	1	Baton Rouge, LA	42	31	9	1	—	1	4		
Paterson, NJ	11	8	2	—	1	—	—	Corpus Christi, TX	56	37	14	3	1	1	4		
Philadelphia, PA	U	U	U	U	U	U	U	Dallas, TX	164	103	37	13	4	7	13		
Pittsburgh, PA <sup>§</sup>	14	12	2	—	—	—	1	El Paso, TX	60	48	9	2	—	1	3		
Reading, PA	37	30	6	—	—	1	5	Fort Worth, TX	U	U	U	U	U	U	U		
Rochester, NY	168	126	31	7	2	2	19	Houston, TX	228	142	62	13	6	5	7		
Schenectady, NY	26	22	3	1	—	—	1	Little Rock, AR	60	25	18	6	1	10	5		
Scranton, PA	20	15	2	2	—	1	3	New Orleans, LA	36	23	8	3	2	—	—		
Syracuse, NY	84	65	15	4	—	—	1	San Antonio, TX	U	U	U	U	U	U	U		
Trenton, NJ	13	8	4	1	—	—	—	Shreveport, LA	48	36	11	—	1	—	3		
Utica, NY	15	10	4	1	—	—	—	Tulsa, OK	82	54	19	6	—	3	7		
Yonkers, NY	19	16	3	—	—	—	1	<b>Mountain</b>	1,061	731	218	63	18	9	63		
<b>E.N. Central</b>	1,307	941	257	64	20	25	105	Albuquerque, NM	98	70	20	3	4	1	7		
Akron, OH	42	26	10	3	3	—	5	Boise, ID	43	22	1	—	—	—	4		
Canton, OH	23	16	6	—	—	1	2	Colorado Springs, CO	68	51	13	4	—	—	3		
Chicago, IL	U	U	U	U	U	U	U	Denver, CO	94	69	18	5	—	2	4		
Cincinnati, OH	68	48	16	1	—	3	3	Las Vegas, NV	287	200	68	13	5	1	19		
Cleveland, OH	223	167	41	8	2	5	24	Ogden, UT	28	24	4	—	—	—	4		
Columbus, OH	170	126	34	5	3	2	18	Phoenix, AZ	142	80	41	13	4	2	5		
Dayton, OH	112	79	23	8	2	—	3	Pueblo, CO	29	17	9	3	—	—	3		
Detroit, MI	U	U	U	U	U	U	U	Salt Lake City, UT	123	80	22	15	4	2	6		
Evansville, IN	42	33	8	1	—	—	7	Tucson, AZ	149	118	22	7	1	1	8		
Fort Wayne, IN	60	44	9	4	2	1	2	<b>Pacific</b>	1,388	966	292	81	24	24	114		
Gary, IN	9	5	3	—	—	1	—	Berkeley, CA	3	2	—	1	—	—	—		
Grand Rapids, MI	49	34	9	4	—	2	3	Fresno, CA	91	67	16	5	1	2	11		
Indianapolis, IN	160	116	25	11	3	5	10	Glendale, CA	20	17	2	1	—	—	4		
Lansing, MI	23	16	6	1	—	—	1	Honolulu, HI	58	44	10	3	—	1	9		
Milwaukee, WI	69	42	19	6	1	1	7	Long Beach, CA	39	29	5	4	—	1	4		
Peoria, IL	64	45	15	3	—	1	5	Los Angeles, CA	225	141	52	17	8	7	24		
Rockford, IL	51	40	6	3	2	—	4	Pasadena, CA	17	14	2	—	—	1	2		
South Bend, IN	44	34	6	—	1	3	5	Portland, OR	135	96	25	9	2	3	5		
Toledo, OH	49	34	11	4	—	—	3	Sacramento, CA	140	105	21	11	2	1	13		
Youngstown, OH	49	36	10	2	1	—	3	San Diego, CA	131	98	23	7	1	2	7		
<b>W.N. Central</b>	476	321	112	24	11	7	35	San Francisco, CA	70	49	17	3	—	1	4		
Des Moines, IA	—	—	—	—	—	—	—	San Jose, CA	147	96	39	8	4	—	8		
Duluth, MN	21	16	4	1	—	—	2	Santa Cruz, CA	23	15	7	1	—	—	1		
Kansas City, KS	17	14	1	1	1	—	3	Seattle, WA	133	94	28	6	2	2	8		
Kansas City, MO	64	38	18	4	2	2	1	Spokane, WA	26	18	5	—	1	2	3		
Lincoln, NE	48	39	6	3	—	—	3	Tacoma, WA	130	81	40	5	3	1	11		
Minneapolis, MN	53	35	13	2	1	2	8	<b>Total¶</b>	<b>8,893</b>	<b>6,158</b>	<b>1,920</b>	<b>481</b>	<b>166</b>	<b>143</b>	<b>601</b>		
Omaha, NE	82	59	17	4	2	—	8										
St. Louis, MO	87	46	30	5	4	1	5										
St. Paul, MN	33	22	10	—	1	—	2										
Wichita, KS	71	52	13	4	—	2	3										

U: Unavailable. —: No reported cases.

\* Mortality data in this table are voluntarily reported from 122 cities in the United States, most of which have populations of >100,000. A death is reported by the place of its occurrence and by the week that the death certificate was filed. Fetal deaths are not included.

† Pneumonia and influenza.

§ Because of changes in reporting methods in this Pennsylvania city, these numbers are partial counts for the current week. Complete counts will be available in 4 to 6 weeks.

¶ Total includes unknown ages.