

Notifiable Diseases and Mortality Tables

TABLE I. Provisional cases of selected* infrequently reported notifiable diseases (<1,000 cases reported during the preceding year) — United States, week ending May 9, 2015 (18th week)[†] (Export data)

Disease	Current week	Cum 2015	5-year weekly average [§]	Total cases reported for previous years					States reporting cases during current week (No.)
				2014	2013	2012	2011	2010	
Anthrax	—	—	—	—	—	—	1	—	
Arboviral diseases** ^{††} :									
California serogroup virus disease	—	—	0	89	95	81	137	75	
Chikungunya virus disease [¶]	NN	NN	—	NN	NN	NN	NN	NN	
Eastern equine encephalitis virus disease	—	—	—	8	8	15	4	10	
Powassan virus disease	—	—	0	8	12	7	16	8	
St. Louis encephalitis virus disease	—	—	—	9	1	3	6	10	
Western equine encephalitis virus disease	—	—	—	—	—	—	—	—	
Botulism, total	—	68	3	157	152	168	153	112	
foodborne	—	27	0	15	4	27	24	7	
infant	—	37	2	122	136	123	97	80	
other (wound and unspecified)	—	4	0	20	12	18	32	25	
Brucellosis	—	16	3	96	99	114	79	115	
Chancroid	—	8	0	8	—	15	8	24	
Cholera	—	—	0	—	14	17	40	13	
Cyclosporiosis ^{††}	—	9	2	392	784	123	151	179	
Diphtheria	—	—	0	1	—	1	—	—	
<i>Haemophilus influenzae</i> invasive disease (age <5 yrs) ^{§§} :									
serotype b	—	6	1	32	31	30	14	23	
nonserotype b	1	74	4	212	222	205	145	200	NY (1)
unknown serotype	3	88	4	214	185	210	226	223	NC (2), AZ (1)
Hansen disease ^{††}	—	18	2	86	81	82	82	98	
Hantavirus infections ^{††} :									
Hantavirus infection (non-HPS) ^{¶¶}	NN	NN	—	NN	NN	NN	NN	NN	
Hantavirus Pulmonary Syndrome (HPS)	—	1	1	29	21	30	23	20	
Hemolytic uremic syndrome, postdiarrheal ^{††}	—	27	4	242	329	274	290	266	
Hepatitis B, virus infection perinatal	—	9	1	33	48	40	NP	NP	
Influenza-associated pediatric mortality ^{††,¶¶}	2	113	2	130	160	52	118	61	SD (1), AK (1)
Leptospirosis ^{††}	—	4	0	26	NN	NN	NN	NN	
Listeriosis	6	117	11	749	735	727	870	821	MD (1), VA (1), FL (1), TN (1), AR (1), TX (1)
Measles ^{***}	3	165	9	669	187	55	220	63	FL (3)
Meningococcal disease, invasive ^{†††} :									
A, C, Y, and W-135	2	26	4	115	142	161	257	280	OK (1), TX (1)
serogroup B	—	34	3	75	99	110	159	135	
other serogroup	—	5	0	22	17	20	20	12	
unknown serogroup	2	74	6	211	298	260	323	406	OH (1), NC (1)
Novel influenza A virus infections ^{§§§}	1	2	29	3	21	313	14	4	OH (1)
Plague	—	—	0	10	4	4	3	2	
Poliomyelitis, paralytic	—	—	—	—	1	—	—	—	
Polio virus infection, nonparalytic ^{††}	—	—	—	—	—	—	—	—	
Psittacosis ^{††}	—	1	0	8	6	2	2	4	
Q fever, total ^{††}	—	30	3	172	170	135	134	131	
acute	—	21	3	135	137	113	110	106	
chronic	—	9	0	37	33	22	24	25	
Rabies, human	—	—	0	1	2	1	6	2	
SARS-CoV ^{††}	—	—	—	—	—	—	—	—	
Smallpox ^{††}	—	—	—	—	—	—	—	—	
Streptococcal toxic-shock syndrome ^{††}	2	81	5	250	224	194	168	142	OH (1), NC (1)
Syphilis, congenital (age <1 yr) ^{††,¶¶¶}	—	72	5	446	348	322	360	377	
Toxic-shock syndrome (staphylococcal) ^{††}	—	21	1	59	71	65	78	82	
Trichinellosis ^{††}	—	2	0	16	22	18	15	7	
Tularemia	2	12	3	183	203	149	166	124	NE (1), VA (1)
Typhoid fever	4	114	7	344	338	354	390	467	NYC (2), PA (1), MD (1)
Vancomycin-intermediate <i>Staphylococcus aureus</i> ^{††}	1	39	3	206	248	134	82	91	NYC (1)
Vancomycin-resistant <i>Staphylococcus aureus</i> ^{††}	—	1	—	—	—	2	—	2	

See Table I footnotes on next page.

TABLE I. (Continued) Provisional cases of selected* infrequently reported notifiable diseases (<1,000 cases reported during the preceding year) — United States, week ending May 9, 2015 (18th week)[†] (Export data)

Disease	Current week	Cum 2015	5-year weekly average [§]	Total cases reported for previous years					States reporting cases during current week (No.)
				2014	2013	2012	2011	2010	
Viral hemorrhagic fevers ^{††,****} :									
Crimean-Congo hemorrhagic fever	—	—	—	NP	NP	NP	NP	NP	
Ebola hemorrhagic fever	—	—	—	6	NP	NP	NP	NP	
Guanarito hemorrhagic fever	—	—	—	NP	NP	NP	NP	NP	
Junin hemorrhagic fever	—	—	—	NP	NP	NP	NP	NP	
Lassa fever	—	—	—	1	NP	NP	NP	NP	
Lujo virus	—	—	—	NP	NP	NP	NP	NP	
Machupo hemorrhagic fever	—	—	—	NP	NP	NP	NP	NP	
Marburg fever	—	—	—	NP	NP	NP	NP	NP	
Sabia-associated hemorrhagic fever	—	—	—	NP	NP	NP	NP	NP	
Yellow fever	—	—	—	—	—	—	—	—	

—: No reported cases. N: Not reportable. NN: Not Nationally Notifiable. NP: Nationally notifiable but not published. Cum: Cumulative year-to-date counts.

* Three low incidence conditions, rubella, rubella congenital, and tetanus, have been moved to Table II to facilitate case count verification with reporting jurisdictions.

[†] Case counts for reporting years 2014 and 2015 are provisional and subject to change. For further information on interpretation of these data, see <http://www.cdc.gov/nndss/document/ProvisionalNationalNotifiableDiseasesSurveillanceData20100927.pdf>.

[§] Calculated by summing the incidence counts for the current week, the 2 weeks preceding the current week, and the 2 weeks following the current week, for a total of 5 preceding years. Additional information is available at <http://www.cdc.gov/nndss/document/5yearweeklyaverage.pdf>.

[¶] Data for the Arboviral disease, Chikungunya, and Hantavirus infection disease, non-Hantavirus Pulmonary Syndrome (HPS), will be displayed in this table after the CDC obtains Office of Management and Budget Paperwork Reduction Act approval to receive data for these conditions.

** Includes both neuroinvasive and nonneuroinvasive. Updated weekly reports from the Division of Vector-Borne Diseases, National Center for Emerging and Zoonotic Infectious Diseases (ArboNET Surveillance). Data for West Nile virus are available in Table II.

^{††} Not reportable in all states. Data from states where the condition is not reportable are excluded from this table except starting in 2007 for the arboviral diseases, STD data, TB data, and influenza-associated pediatric mortality, and in 2003 for SARS-CoV. Reporting exceptions are available at http://www.cdc.gov/nndss/document/SRCA_FINAL_REPORT_2006-2012_final.xlsx.

^{§§} Data for *H. influenzae* (all ages, all serotypes) are available in Table II.

^{¶¶} Updated weekly from reports to the Influenza Division, National Center for Immunization and Respiratory Diseases. Since September 28, 2014, 138 influenza-associated pediatric deaths occurring during the 2014–15 influenza season have been reported.

*** Of the three measles cases reported for the current week, one was indigenous and two were imported.

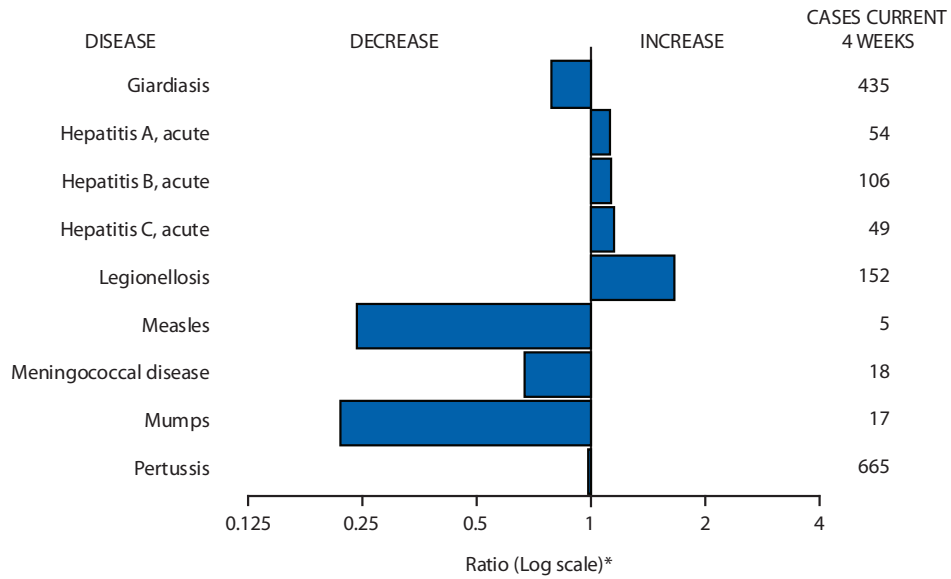
^{†††} Data for meningococcal disease (all serogroups) are available in Table II.

^{§§§} All cases of novel influenza A virus infection reported to CDC since 2010 have been variant viruses. Influenza viruses that circulate in swine are called swine influenza viruses when isolated from swine, but are called variant viruses when isolated from humans. Variant influenza viruses are different from the influenza A (H1N1)pdm09 virus. Total case counts are provided by the Influenza Division, National Center for Immunization and Respiratory Diseases (NCIRD).

^{¶¶¶} Updated weekly from reports to the Division of STD Prevention, National Center for HIV/AIDS, Viral Hepatitis, STD, and TB Prevention.

**** Prior to 2015, CDC's National Notifiable Diseases Surveillance System (NNDSS) did not receive electronic data about incident cases of specific viral hemorrhagic fevers; instead data were collected in aggregate as "viral hemorrhagic fevers." Beginning in 2015, NNDSS has been updated to receive data for each of the viral hemorrhagic fevers listed below. There were no cases of viral hemorrhagic fever reported during the current week. In addition to the four cases of Ebola diagnosed in the United States to date in 2014, six residents of the United States have been medically evacuated to the United States for care after developing Ebola in West Africa. Ten of the 11 VHF cases reported for 2014 are confirmed as Ebola and one as Lassa fever.

FIGURE I. Selected notifiable disease reports, United States, comparison of provisional 4-week totals May 9, 2015, with historical data



* Ratio of current 4-week total to mean of 15 4-week totals (from previous, comparable, and subsequent 4-week periods for the past 5 years). The point where the hatched area begins is based on the mean and two standard deviations of these 4-week totals.

Notifiable Disease Data Team and 122 Cities Mortality Data Team

David W. Walker

Deborah A. Adams	Willie J. Anderson
Lenee Blanton	Rosaline Dhara
Diana Harris Onweh	Alan W. Schley
Pearl C. Sharp	

Data presented by the Notifiable Disease Data Team and 122 Cities Mortality Data Team in the weekly MMWR are provisional, based on weekly reports to CDC by state health departments. Readers who have difficulty accessing this PDF file may access the HTML file at <http://www.cdc.gov/mmwr/preview/mmwrhtml/mm6418md.htm>. Address all inquiries about the MMWR Series, including material to be considered for publication, to Editor, MMWR Series, Mailstop E-90, CDC, 1600 Clifton Rd., N.E., Atlanta, GA 30329-4027 or to mmwrq@cdc.gov.

Morbidity and Mortality Weekly Report

TABLE II. Provisional cases of selected notifiable diseases (≥1,000 cases reported during the preceding year), and selected* low frequency diseases, United States, weeks ending May 9, 2015, and May 3, 2014 (18th week)[†] (Export data)

Reporting area	<i>Babesiosis</i>					<i>Campylobacteriosis</i>				
	Current week	Previous 52 weeks		Cum 2015	Cum 2014	Current week	Previous 52 weeks		Cum 2015	Cum 2014
		Med	Max				Med	Max		
United States	1	14	173	27	54	423	586	666	10,362	N
New England	—	6	96	6	35	11	38	53	649	N
Connecticut	—	1	34	1	10	—	11	16	176	N
Maine	—	0	5	1	2	1	3	5	45	N
Massachusetts	—	2	57	4	17	—	18	26	312	N
New Hampshire	—	0	6	—	4	—	2	7	50	N
Rhode Island	—	0	18	—	2	10	0	7	41	N
Vermont	—	0	1	—	—	—	1	6	25	N
Mid. Atlantic	—	5	71	14	15	51	61	82	1,064	N
New Jersey	—	1	23	1	7	—	0	0	—	N
New York (Upstate)	—	3	56	8	5	—	0	0	—	N
New York City	—	0	9	5	3	39	26	41	497	N
Pennsylvania	—	0	0	—	—	12	30	53	567	N
E.N. Central	—	0	7	2	2	48	65	85	1,182	N
Illinois	—	0	1	—	—	—	0	0	—	N
Indiana	—	0	0	—	—	—	10	15	157	N
Michigan	—	0	1	1	—	5	16	24	288	N
Ohio	—	0	0	—	—	37	24	36	452	N
Wisconsin	—	0	7	1	2	6	16	22	285	N
W.N. Central	—	0	5	—	1	8	22	35	415	N
Iowa	—	0	0	—	—	1	6	11	116	N
Kansas	—	0	0	—	—	—	3	8	59	N
Minnesota	—	0	5	—	1	—	0	0	—	N
Missouri	—	0	0	—	—	—	0	17	88	N
Nebraska	—	0	0	—	—	7	5	10	105	N
North Dakota	—	0	0	—	—	—	0	0	—	N
South Dakota	—	0	1	—	—	—	2	6	47	N
S. Atlantic	—	0	2	1	—	129	132	151	2,355	N
Delaware	—	0	1	—	—	—	2	5	31	N
District of Columbia	—	0	0	—	—	—	0	0	—	N
Florida	—	0	0	—	—	71	65	84	1,154	N
Georgia	—	0	0	—	—	3	8	13	146	N
Maryland	—	0	1	—	—	12	9	25	197	N
North Carolina	—	0	0	—	—	21	19	28	299	N
South Carolina	—	0	2	1	—	2	5	9	83	N
Virginia	—	0	0	—	—	20	20	32	375	N
West Virginia	—	0	0	—	—	—	4	9	70	N
E.S. Central	—	0	1	2	—	15	28	44	510	N
Alabama	—	0	1	1	—	—	4	9	74	N
Kentucky	—	0	0	—	—	6	11	24	215	N
Mississippi	—	0	0	—	—	—	2	6	36	N
Tennessee	—	0	1	1	—	9	10	18	185	N
W.S. Central	—	0	1	—	—	71	62	95	1,117	N
Arkansas	—	0	0	—	—	4	6	11	94	N
Louisiana	—	0	0	—	—	4	10	13	156	N
Oklahoma	—	0	0	—	—	11	7	16	128	N
Texas	—	0	1	—	—	52	41	65	739	N
Mountain	—	0	0	—	—	52	50	60	874	N
Arizona	—	0	0	—	—	41	22	40	426	N
Colorado	—	0	0	—	—	—	0	15	75	N
Idaho	—	0	0	—	—	6	5	10	93	N
Montana	—	0	0	—	—	4	3	9	72	N
Nevada	—	0	0	—	—	—	2	4	31	N
New Mexico	—	0	0	—	—	1	5	8	91	N
Utah	—	0	0	—	—	—	4	11	59	N
Wyoming	—	0	0	—	—	—	2	3	27	N
Pacific	1	0	2	2	1	38	125	179	2,196	N
Alaska	—	0	0	—	—	1	1	3	17	N
California	—	0	1	1	1	1	93	115	1,508	N
Hawaii	—	0	0	—	—	7	6	11	109	N
Oregon	1	0	1	1	—	9	14	26	250	N
Washington	—	0	0	—	—	20	17	43	312	N
Territories										
American Samoa	—	—	—	—	—	—	—	—	—	N
C.N.M.I.	—	—	—	—	—	—	—	—	—	N
Guam	—	—	—	—	—	—	—	—	—	N
Puerto Rico	—	0	0	—	—	—	0	1	1	N
U.S. Virgin Islands	—	0	0	—	—	—	0	0	—	N

C.N.M.I.: Commonwealth of Northern Mariana Islands.

U: Unavailable. —: No reported cases. N: Not reportable. NN: Not Nationally Notifiable. NP: Nationally notifiable but not published. Cum: Cumulative year-to-date counts. Med: Median. Max: Maximum.

* Three low incidence conditions, rubella, rubella congenital, and tetanus, have been moved to Table II to facilitate case count verification with reporting jurisdictions.

[†] Case counts for reporting year 2014 and 2015 are provisional and subject to change. For further information on interpretation of these data, see <http://www.cdc.gov/nndss/document/ProvisionalNationalNotifiableDiseasesSurveillanceData20100927.pdf>. Data for TB are displayed in Table IV, which appears quarterly.

Morbidity and Mortality Weekly Report

TABLE II. (Continued) Provisional cases of selected notifiable diseases (≥1,000 cases reported during the preceding year), and selected* low frequency diseases, United States, weeks ending May 9, 2015, and May 3, 2014 (18th week)† (Export data)

Reporting area	<i>Chlamydia trachomatis</i> infection					Coccidioidomycosis				
	Current week	Previous 52 weeks		Cum 2015	Cum 2014	Current week	Previous 52 weeks		Cum 2015	Cum 2014
		Med	Max				Med	Max		
United States	12,255	27,708	30,256	459,247	491,660	163	128	234	2,404	3,320
New England	279	864	1,241	14,252	16,094	—	0	1	—	2
Connecticut	135	239	399	4,066	4,740	N	0	0	N	N
Maine	39	79	123	1,385	1,030	N	0	0	N	N
Massachusetts	—	401	534	6,629	6,999	—	0	0	—	—
New Hampshire	—	56	110	74	1,124	—	0	1	—	2
Rhode Island	101	82	243	1,597	1,488	—	0	1	—	—
Vermont	4	35	55	501	713	N	0	0	N	N
Mid. Atlantic	2,704	3,538	3,930	62,288	58,675	—	0	0	—	—
New Jersey	238	585	676	10,147	10,049	N	0	0	N	N
New York (Upstate)	866	755	1,166	13,335	11,844	N	0	0	N	N
New York City	643	1,191	1,374	20,923	20,204	N	0	0	N	N
Pennsylvania	957	987	1,353	17,883	16,578	—	0	0	—	—
E.N. Central	1,225	4,147	4,976	63,218	72,921	2	1	3	9	22
Illinois	35	1,283	1,470	14,309	22,708	N	0	0	N	N
Indiana	228	541	920	9,217	9,576	N	0	0	N	N
Michigan	406	887	1,222	14,678	14,147	2	0	2	7	15
Ohio	321	1,058	1,249	17,610	18,445	—	0	2	2	4
Wisconsin	235	448	553	7,404	8,045	—	0	1	—	3
W.N. Central	341	1,663	1,845	26,785	29,458	—	2	6	29	35
Iowa	28	227	259	3,828	4,114	N	0	0	N	N
Kansas	35	213	351	3,956	3,817	N	0	0	N	N
Minnesota	8	374	430	4,732	6,761	—	1	6	25	27
Missouri	168	552	631	9,336	9,377	—	0	1	1	6
Nebraska	55	148	250	2,736	2,693	—	0	1	3	2
North Dakota	—	63	89	854	1,204	N	0	1	N	N
South Dakota	47	76	103	1,343	1,492	N	0	0	N	N
S. Atlantic	3,921	5,495	7,287	101,497	97,217	—	0	2	2	1
Delaware	86	81	166	1,470	1,400	—	0	0	—	—
District of Columbia	—	—	—	—	—	—	0	0	—	—
Florida	1,071	1,675	2,034	29,178	27,475	N	0	0	N	N
Georgia	520	1,019	1,212	15,871	18,116	N	0	0	N	N
Maryland	—	505	936	6,566	7,488	—	0	2	2	1
North Carolina	813	987	2,546	24,771	19,201	N	0	0	N	N
South Carolina	613	530	837	9,517	9,325	N	0	0	N	N
Virginia	818	689	1,065	12,922	12,569	N	0	0	N	N
West Virginia	—	83	139	1,202	1,643	N	0	0	N	N
E.S. Central	936	1,730	2,334	25,199	39,852	—	0	0	—	—
Alabama	354	543	724	8,636	9,319	N	0	0	N	N
Kentucky	375	321	600	5,047	5,675	N	0	0	N	N
Mississippi	—	323	518	2,141	13,989	N	0	0	N	N
Tennessee	207	583	761	9,375	10,869	N	0	0	N	N
W.S. Central	217	3,765	4,495	60,234	64,793	—	0	1	—	—
Arkansas	—	304	505	4,254	5,136	N	0	0	N	N
Louisiana	158	464	1,165	6,140	7,547	—	0	1	—	—
Oklahoma	59	362	456	4,130	7,236	N	0	0	N	N
Texas	—	2,601	3,275	45,710	44,874	N	0	0	N	N
Mountain	1,318	1,794	2,306	30,410	33,610	160	92	180	1,930	2,452
Arizona	570	594	873	8,267	10,699	159	91	177	1,896	2,391
Colorado	483	440	1,013	8,762	6,965	N	0	0	N	N
Idaho	—	101	135	1,763	1,819	N	0	0	N	N
Montana	36	82	126	1,416	1,373	1	0	2	4	2
Nevada	26	184	261	2,872	5,237	—	1	5	18	33
New Mexico	116	219	375	4,203	3,998	—	0	3	3	10
Utah	87	152	203	2,670	2,883	—	0	3	8	16
Wyoming	—	30	72	457	636	—	0	1	1	—
Pacific	1,314	4,441	4,962	75,364	79,040	1	35	57	434	808
Alaska	—	103	142	1,483	2,120	N	0	0	N	N
California	880	3,414	3,971	59,709	60,324	1	35	57	432	807
Hawaii	—	117	162	1,878	2,228	N	0	0	N	N
Oregon	—	303	402	5,388	5,401	—	0	1	2	1
Washington	434	462	595	6,906	8,967	—	0	0	—	—
Territories										
American Samoa	—	—	—	—	—	N	—	—	N	N
C.N.M.I.	—	—	—	—	—	—	—	—	—	—
Guam	—	—	—	—	—	—	—	—	—	—
Puerto Rico	—	66	317	1,545	2,003	N	0	0	N	N
U.S. Virgin Islands	—	14	29	82	270	—	0	0	—	—

C.N.M.I.: Commonwealth of Northern Mariana Islands.

U: Unavailable. —: No reported cases. N: Not reportable. NN: Not Nationally Notifiable. NP: Nationally notifiable but not published. Cum: Cumulative year-to-date counts. Med: Median. Max: Maximum.

* Three low incidence conditions, rubella, rubella congenital, and tetanus, have been moved to Table II to facilitate case count verification with reporting jurisdictions.

† Case counts for reporting year 2014 and 2015 are provisional and subject to change. For further information on interpretation of these data, see <http://www.cdc.gov/nndss/document/ProvisionalNationalNotifiableDiseasesSurveillanceData20100927.pdf>. Data for TB are displayed in Table IV, which appears quarterly.

Morbidity and Mortality Weekly Report

TABLE II. (Continued) Provisional cases of selected notifiable diseases (≥1,000 cases reported during the preceding year), and selected* low frequency diseases, United States, weeks ending May 9, 2015, and May 3, 2014 (18th week)[†] (Export data)

Reporting area	Cryptosporidiosis					Dengue Virus Infection									
	Current week	Previous 52 weeks		Cum 2015	Cum 2014	Dengue [§]					Severe Dengue				
		Med	Max			Current week	Previous 52 weeks		Cum 2015	Cum 2014	Current week	Previous 52 weeks		Cum 2015	Cum 2014
United States	62	120	352	1,590	1,739	—	11	38	90	129	—	0	0	—	—
New England	2	5	17	78	83	—	0	3	4	11	—	0	0	—	—
Connecticut	—	1	3	10	12	—	0	1	1	—	—	0	0	—	—
Maine	1	1	5	13	19	—	0	1	1	1	—	0	0	—	—
Massachusetts	—	3	9	37	34	—	0	2	—	6	—	0	0	—	—
New Hampshire	—	0	3	6	10	—	0	1	1	1	—	0	0	—	—
Rhode Island	—	0	4	2	5	—	0	1	—	1	—	0	0	—	—
Vermont	1	0	7	10	3	—	0	1	1	2	—	0	0	—	—
Mid. Atlantic	7	11	40	135	182	—	3	9	24	31	—	0	0	—	—
New Jersey	—	1	6	2	19	—	1	6	7	5	—	0	0	—	—
New York (Upstate)	2	3	14	45	47	—	0	2	4	10	—	0	0	—	—
New York City	2	2	7	25	22	—	0	4	11	13	—	0	0	—	—
Pennsylvania	3	5	17	63	94	—	0	2	2	3	—	0	0	—	—
E.N. Central	9	22	72	324	343	—	0	4	3	9	—	0	0	—	—
Illinois	—	2	7	31	54	—	0	1	—	2	—	0	0	—	—
Indiana	—	4	11	44	40	—	0	2	—	—	—	0	0	—	—
Michigan	—	4	13	53	55	—	0	1	—	—	—	0	0	—	—
Ohio	8	5	15	93	95	—	0	2	3	5	—	0	0	—	—
Wisconsin	1	9	30	103	99	—	0	2	—	2	—	0	0	—	—
W.N. Central	4	14	53	155	256	—	0	2	2	1	—	0	0	—	—
Iowa	—	4	13	51	72	—	0	1	1	—	—	0	0	—	—
Kansas	—	1	5	24	22	—	0	1	1	—	—	0	0	—	—
Minnesota	—	3	17	—	52	—	0	1	—	1	—	0	0	—	—
Missouri	—	3	13	18	45	—	0	1	—	—	—	0	0	—	—
Nebraska	3	2	9	28	25	—	0	0	—	—	—	0	0	—	—
North Dakota	—	1	16	5	14	—	0	0	—	—	—	0	0	—	—
South Dakota	1	2	9	29	26	—	0	0	—	—	—	0	0	—	—
S. Atlantic	18	32	152	375	366	—	2	7	18	35	—	0	0	—	—
Delaware	—	0	1	2	2	—	0	1	1	—	—	0	0	—	—
District of Columbia	—	0	1	1	2	—	0	3	3	—	—	0	0	—	—
Florida	10	18	122	190	150	—	1	5	9	20	—	0	0	—	—
Georgia	7	4	19	85	65	—	0	1	—	2	—	0	0	—	—
Maryland	—	1	5	16	19	—	0	2	—	3	—	0	0	—	—
North Carolina	—	0	42	25	54	—	0	2	—	3	—	0	0	—	—
South Carolina	—	1	3	16	28	—	0	1	1	1	—	0	0	—	—
Virginia	1	2	9	36	44	—	0	3	3	6	—	0	0	—	—
West Virginia	—	0	2	4	2	—	0	1	1	—	—	0	0	—	—
E.S. Central	2	9	22	155	97	—	0	3	8	1	—	0	0	—	—
Alabama	—	3	9	78	33	—	0	1	—	—	—	0	0	—	—
Kentucky	—	1	6	20	17	—	0	1	1	—	—	0	0	—	—
Mississippi	—	1	6	11	18	—	0	1	—	1	—	0	0	—	—
Tennessee	2	2	12	46	29	—	0	3	7	—	—	0	0	—	—
W.S. Central	7	14	33	140	147	—	0	4	3	9	—	0	0	—	—
Arkansas	1	1	12	13	6	—	0	2	—	—	—	0	0	—	—
Louisiana	—	3	17	48	48	—	0	1	—	1	—	0	0	—	—
Oklahoma	—	1	10	10	14	—	0	0	—	—	—	0	0	—	—
Texas	6	7	22	69	79	—	0	3	3	8	—	0	0	—	—
Mountain	4	7	23	93	121	—	0	22	—	7	—	0	0	—	—
Arizona	1	1	3	13	18	—	0	22	—	4	—	0	0	—	—
Colorado	—	1	6	3	18	—	0	2	—	1	—	0	0	—	—
Idaho	1	1	14	18	20	—	0	1	—	—	—	0	0	—	—
Montana	—	1	5	4	13	—	0	0	—	—	—	0	0	—	—
Nevada	—	0	2	2	6	—	0	1	—	2	—	0	0	—	—
New Mexico	—	1	7	8	23	—	0	0	—	—	—	0	0	—	—
Utah	2	2	6	45	15	—	0	0	—	—	—	0	0	—	—
Wyoming	—	0	4	—	8	—	0	0	—	—	—	0	0	—	—
Pacific	9	8	27	135	144	—	3	8	28	25	—	0	0	—	—
Alaska	—	0	1	1	2	—	0	1	—	—	—	0	0	—	—
California	7	5	15	75	91	—	2	8	24	20	—	0	0	—	—
Hawaii	—	0	1	—	—	—	0	2	—	3	—	0	0	—	—
Oregon	2	2	7	47	35	—	0	0	—	—	—	0	0	—	—
Washington	—	0	23	12	16	—	0	2	4	2	—	0	0	—	—
Territories															
American Samoa	N	—	—	N	N	—	—	—	—	—	—	—	—	—	—
C.N.M.I.	—	—	—	—	—	—	—	—	—	—	—	—	—	—	—
Guam	—	—	—	—	—	—	—	—	—	—	—	—	—	—	—
Puerto Rico	N	0	0	N	N	—	4	13	21	324	—	0	0	—	2
U.S. Virgin Islands	—	0	0	—	—	—	0	3	3	5	—	0	0	—	—

C.N.M.I.: Commonwealth of Northern Mariana Islands.

U: Unavailable. —: No reported cases. N: Not reportable. NN: Not Nationally Notifiable. NP: Nationally notifiable but not published. Cum: Cumulative year-to-date counts. Med: Median. Max: Maximum.

* Three low incidence conditions, rubella, rubella congenital, and tetanus, have been moved to Table II to facilitate case count verification with reporting jurisdictions.

[†] Case counts for reporting year 2014 and 2015 are provisional and subject to change. For further information on interpretation of these data, see <http://www.cdc.gov/nndss/document/ProvisionalNationalNotifiableDiseasesSurveillanceData20100927.pdf>. Data for TB are displayed in Table IV, which appears quarterly.

[§] Data for Dengue-like illness will be included in this table with Dengue case counts after the CDC obtains Office of Management and Budget (OMB) Paperwork Reduction Act (PRA) to receive data for this condition.

Morbidity and Mortality Weekly Report

TABLE II. (Continued) Provisional cases of selected notifiable diseases (≥1,000 cases reported during the preceding year), and selected* low frequency diseases, United States, weeks ending May 9, 2015, and May 3, 2014 (18th week)[†] (Export data)

Reporting area	Ehrlichiosis/Anaplasmosis [§]														
	<i>Ehrlichia chaffeensis</i>					<i>Anaplasma phagocytophilum</i>					Undetermined				
	Current week	Previous 52 weeks		Cum 2015	Cum 2014	Current week	Previous 52 weeks		Cum 2015	Cum 2014	Current week	Previous 52 weeks		Cum 2015	Cum 2014
	Med	Max				Med	Max				Med	Max			
United States	8	17	101	67	59	7	37	185	56	137	1	2	15	15	11
New England	—	1	6	6	5	2	13	80	18	52	—	0	2	1	—
Connecticut	—	0	0	—	—	—	0	10	1	6	—	0	0	—	—
Maine	—	0	1	1	—	2	3	13	4	6	—	0	2	1	—
Massachusetts	—	0	3	—	2	—	5	47	4	25	—	0	1	—	—
New Hampshire	—	0	1	1	2	—	1	12	2	9	—	0	1	—	—
Rhode Island	—	0	4	4	1	—	1	11	2	3	—	0	0	—	—
Vermont	—	0	1	—	—	—	1	6	5	3	—	0	1	—	—
Mid. Atlantic	2	3	18	11	8	5	10	38	17	22	—	0	2	1	4
New Jersey	—	1	7	5	5	—	1	6	1	6	—	0	2	—	2
New York (Upstate)	—	1	12	1	2	5	7	32	13	16	—	0	2	1	2
New York City	2	0	3	5	—	—	0	5	3	—	—	0	0	—	—
Pennsylvania	—	0	1	—	1	—	0	1	—	—	—	0	0	—	—
E.N. Central	—	1	5	3	5	—	5	54	10	40	1	1	8	12	5
Illinois	—	0	5	1	3	—	0	2	1	7	—	0	0	—	—
Indiana	—	0	0	—	—	—	0	0	—	—	—	0	7	8	1
Michigan	—	0	2	1	—	—	0	2	2	—	—	0	0	—	1
Ohio	—	0	1	1	—	—	0	1	1	—	1	0	1	1	—
Wisconsin	—	0	2	—	2	—	4	51	6	33	—	0	6	3	3
W.N. Central	1	3	35	5	15	—	3	34	1	15	—	0	4	—	1
Iowa	N	0	0	N	N	N	0	0	N	N	N	0	0	N	N
Kansas	—	0	5	2	4	—	0	1	—	—	—	0	1	—	—
Minnesota	—	0	1	—	1	—	3	32	—	11	—	0	2	—	1
Missouri	—	2	29	2	10	—	0	3	1	3	—	0	3	—	—
Nebraska	1	0	2	1	—	—	0	0	—	1	—	0	0	—	—
North Dakota	—	0	1	—	—	—	0	1	—	—	—	0	0	—	—
South Dakota	—	0	0	—	—	—	0	0	—	—	—	0	0	—	—
S. Atlantic	1	3	27	26	14	—	1	6	8	6	—	0	2	1	1
Delaware	—	0	5	—	1	—	0	1	—	1	—	0	0	—	—
District of Columbia	N	0	0	N	N	N	0	0	N	N	N	0	0	N	N
Florida	—	0	3	3	5	—	0	2	1	—	—	0	0	—	—
Georgia	—	0	2	—	3	—	0	1	—	—	—	0	1	—	—
Maryland	1	0	5	4	1	—	0	1	1	1	—	0	0	—	—
North Carolina	—	0	23	11	3	—	0	6	4	1	—	0	0	—	—
South Carolina	—	0	2	1	—	—	0	0	—	—	—	0	0	—	—
Virginia	—	1	11	7	1	—	0	2	2	3	—	0	2	1	1
West Virginia	—	0	1	—	—	—	0	1	—	—	—	0	0	—	—
E.S. Central	1	1	13	4	6	—	0	2	—	1	—	0	2	—	—
Alabama	—	0	2	—	2	—	0	1	—	1	—	0	1	—	—
Kentucky	—	0	6	1	1	—	0	0	—	—	—	0	0	—	—
Mississippi	—	0	1	—	—	—	0	1	—	—	—	0	0	—	—
Tennessee	1	1	8	3	3	—	0	1	—	—	—	0	2	—	—
W.S. Central	3	5	29	12	6	—	0	4	2	1	—	0	0	—	—
Arkansas	3	4	20	9	5	—	0	3	2	1	—	0	0	—	—
Louisiana	—	0	1	—	—	—	0	1	—	—	—	0	0	—	—
Oklahoma	—	0	20	2	—	—	0	1	—	—	—	0	0	—	—
Texas	—	0	3	1	1	—	0	1	—	—	—	0	0	—	—
Mountain	—	0	0	—	—	—	0	0	—	—	—	0	1	—	—
Arizona	—	0	0	—	—	—	0	0	—	—	—	0	1	—	—
Colorado	N	0	0	N	N	N	0	0	N	N	N	0	0	N	N
Idaho	N	0	0	N	N	N	0	0	N	N	N	0	0	N	N
Montana	N	0	0	N	N	N	0	0	N	N	N	0	0	N	N
Nevada	—	0	0	—	—	—	0	0	—	—	—	0	0	—	—
New Mexico	N	0	0	N	N	N	0	0	N	N	N	0	0	N	N
Utah	—	0	0	—	—	—	0	0	—	—	—	0	0	—	—
Wyoming	—	0	0	—	—	—	0	0	—	—	—	0	0	—	—
Pacific	—	0	0	—	—	—	0	0	—	—	—	0	1	—	—
Alaska	N	0	0	N	N	N	0	0	N	N	N	0	0	N	N
California	—	0	0	—	—	—	0	0	—	—	—	0	1	—	—
Hawaii	N	0	0	N	N	N	0	0	N	N	N	0	0	N	N
Oregon	—	0	0	—	—	—	0	0	—	—	—	0	0	—	—
Washington	—	0	0	—	—	—	0	0	—	—	—	0	0	—	—
Territories															
American Samoa	N	—	—	N	N	N	—	—	N	N	N	—	—	N	N
C.N.M.I.	—	—	—	—	—	—	—	—	—	—	—	—	—	—	—
Guam	N	—	—	N	N	N	—	—	N	N	N	—	—	N	N
Puerto Rico	N	0	0	N	N	N	0	0	N	N	N	0	0	N	N
U.S. Virgin Islands	—	0	0	—	—	—	0	0	—	—	—	0	0	—	—

C.N.M.I.: Commonwealth of Northern Mariana Islands.

U: Unavailable. —: No reported cases. N: Not reportable. NN: Not Nationally Notifiable. NP: Nationally notifiable but not published. Cum: Cumulative year-to-date counts. Med: Median. Max: Maximum.

* Three low incidence conditions, rubella, rubella congenital, and tetanus, have been moved to Table II to facilitate case count verification with reporting jurisdictions.

† Case counts for reporting year 2014 and 2015 are provisional and subject to change. For further information on interpretation of these data, see <http://www.cdc.gov/nndss/document/ProvisionalNationalNotifiableDiseasesSurveillanceData20100927.pdf>. Data for TB are displayed in Table IV, which appears quarterly.

§ Cumulative total *E. ewingii* cases reported for year 2015 = 0, and 17 cases reported for 2014.

Morbidity and Mortality Weekly Report

TABLE II. (Continued) Provisional cases of selected notifiable diseases (≥1,000 cases reported during the preceding year), and selected* low frequency diseases, United States, weeks ending May 9, 2015, and May 3, 2014 (18th week)[†] (Export data)

Reporting area	Giardiasis					Gonorrhea					Haemophilus influenzae, invasive [§] All ages, all serotypes				
	Current week	Previous 52 weeks		Cum 2015	Cum 2014	Current week	Previous 52 weeks		Cum 2015	Cum 2014	Current week	Previous 52 weeks		Cum 2015	Cum 2014
		Med	Max				Med	Max				Med	Max		
United States	105	233	391	3,284	3,857	2,974	6,753	7,428	112,075	114,606	52	61	121	1,281	1,286
New England	1	21	49	283	384	38	129	196	2,039	2,343	1	5	10	86	66
Connecticut	1	4	10	60	75	19	40	81	600	871	—	1	3	12	18
Maine	—	2	7	19	58	6	3	11	67	86	—	0	3	15	7
Massachusetts	—	12	26	164	194	—	77	113	1,115	1,143	—	2	8	45	30
New Hampshire	—	1	6	22	16	3	5	10	72	62	—	0	2	4	5
Rhode Island	—	0	6	2	17	10	11	28	153	157	1	0	3	5	3
Vermont	—	2	8	16	24	—	2	6	32	24	—	0	2	5	3
Mid. Atlantic	32	48	84	691	869	562	794	950	14,349	12,682	11	11	27	205	201
New Jersey	—	6	16	36	127	37	131	167	2,276	2,220	—	3	5	36	56
New York (Upstate)	14	16	30	212	277	183	141	253	2,651	1,845	4	3	17	64	49
New York City	11	14	31	275	243	159	289	379	5,281	4,422	5	1	6	34	40
Pennsylvania	7	12	23	168	222	183	239	327	4,141	4,195	2	3	9	71	56
E.N. Central	12	25	57	351	476	305	979	1,303	14,322	17,627	4	10	27	174	178
Illinois	—	0	1	—	38	10	304	400	2,895	5,219	—	3	7	50	46
Indiana	—	2	11	26	41	64	136	279	2,268	2,381	—	2	4	18	27
Michigan	1	9	17	122	154	70	188	267	3,214	3,144	1	2	7	37	30
Ohio	11	7	21	136	118	102	304	372	4,759	5,449	3	2	11	63	46
Wisconsin	—	7	30	67	125	59	74	115	1,186	1,434	—	1	4	6	29
W.N. Central	4	15	38	143	228	154	379	441	6,302	5,962	—	5	12	64	101
Iowa	—	3	10	8	65	6	33	55	567	510	—	0	2	—	—
Kansas	—	2	6	27	24	11	48	84	771	819	—	1	3	12	15
Minnesota	—	0	0	—	—	12	78	104	1,141	1,266	—	2	7	32	40
Missouri	—	3	13	25	58	112	151	203	2,883	2,359	—	1	4	12	35
Nebraska	4	2	9	54	41	12	29	56	483	467	—	0	3	3	8
North Dakota	—	1	2	6	9	—	12	25	149	247	—	0	2	4	3
South Dakota	—	2	9	23	31	1	19	33	308	294	—	0	1	1	—
S. Atlantic	24	47	89	739	789	974	1,419	2,023	26,151	24,875	18	14	34	326	339
Delaware	—	0	2	8	8	25	23	46	374	418	—	0	1	7	9
District of Columbia	—	0	3	1	22	—	—	—	—	—	—	0	1	—	2
Florida	15	21	54	323	342	231	401	463	6,970	6,963	4	3	11	73	126
Georgia	1	13	33	223	209	169	273	330	4,200	4,440	1	2	9	48	51
Maryland	5	5	11	73	82	—	114	210	1,616	1,639	1	1	5	39	26
North Carolina	N	0	0	N	N	237	258	1,026	7,281	5,683	10	2	22	63	54
South Carolina	—	2	10	34	46	164	152	228	2,625	2,719	—	1	5	40	28
Virginia	3	5	18	60	63	148	151	272	2,846	2,724	2	2	9	39	27
West Virginia	—	1	6	17	17	—	15	31	239	289	—	1	5	17	16
E.S. Central	—	3	10	60	58	229	459	677	6,714	10,046	3	5	12	113	92
Alabama	—	3	10	60	58	82	151	201	2,376	2,386	1	1	6	37	30
Kentucky	N	0	0	N	N	114	79	166	1,240	1,305	—	0	3	2	15
Mississippi	N	0	0	N	N	—	94	158	752	3,921	1	1	2	17	12
Tennessee	N	0	0	N	N	33	133	237	2,346	2,434	1	2	7	57	35
W.S. Central	5	7	19	76	79	87	1,057	1,324	16,573	17,236	8	4	15	94	70
Arkansas	5	2	6	31	25	—	83	143	1,149	1,526	2	1	5	17	19
Louisiana	—	4	15	45	54	67	142	354	1,816	2,171	3	1	4	24	18
Oklahoma	—	0	0	—	—	20	109	153	1,286	2,108	3	2	9	47	29
Texas	N	0	0	N	N	—	698	987	12,322	11,431	—	0	2	6	4
Mountain	5	18	43	227	307	250	356	428	5,541	6,104	5	5	14	137	156
Arizona	—	2	11	48	26	116	137	204	1,850	2,412	3	1	8	56	58
Colorado	—	5	13	43	102	88	66	165	1,348	1,030	2	1	5	25	33
Idaho	2	3	9	39	36	—	8	21	90	145	—	0	2	12	7
Montana	3	2	4	20	21	6	11	22	255	112	—	0	2	—	4
Nevada	—	1	5	16	17	12	54	97	840	1,246	—	0	2	9	6
New Mexico	—	2	7	21	24	11	43	72	670	695	—	1	3	26	24
Utah	—	4	11	40	71	17	28	48	456	428	—	1	6	9	23
Wyoming	—	0	2	—	10	—	1	8	32	36	—	0	1	—	1
Pacific	22	47	106	714	667	375	1,154	1,323	20,084	17,731	2	3	9	82	83
Alaska	2	1	8	22	22	—	22	38	282	473	1	0	2	6	7
California	12	27	54	443	469	285	928	1,119	16,646	14,499	—	0	3	19	20
Hawaii	—	1	3	10	8	1	21	38	437	269	—	0	2	3	15
Oregon	2	7	14	129	98	—	48	132	929	688	1	2	5	53	39
Washington	6	7	81	110	70	89	120	164	1,790	1,802	—	0	2	1	2
Territories															
American Samoa	—	—	—	—	—	—	—	—	—	—	—	—	—	—	—
C.N.M.I.	—	—	—	—	—	—	—	—	—	—	—	—	—	—	—
Guam	—	—	—	—	—	—	—	—	—	—	—	—	—	—	—
Puerto Rico	—	0	3	—	13	—	9	39	168	135	—	0	1	1	—
U.S. Virgin Islands	—	0	0	—	—	—	1	6	9	28	—	0	0	—	—

C.N.M.I.: Commonwealth of Northern Mariana Islands.

U: Unavailable. —: No reported cases. N: Not reportable. NN: Not Nationally Notifiable. NP: Nationally notifiable but not published. Cum: Cumulative year-to-date counts. Med: Median. Max: Maximum.

* Three low incidence conditions, rubella, rubella congenital, and tetanus, have been moved to Table II to facilitate case count verification with reporting jurisdictions.

[†] Case counts for reporting year 2014 and 2015 are provisional and subject to change. For further information on interpretation of these data, see <http://www.cdc.gov/nndss/document/ProvisionalNationalNotifiableDiseasesSurveillanceData20100927.pdf>. Data for TB are displayed in Table IV, which appears quarterly.

[§] Data for *H. influenzae* (age <5 years for serotype b, nonserotype b, and unknown serotype) are available in Table I.

Morbidity and Mortality Weekly Report

TABLE II. (Continued) Provisional cases of selected notifiable diseases (≥1,000 cases reported during the preceding year), and selected* low frequency diseases, United States, weeks ending May 9, 2015, and May 3, 2014 (18th week)[†] (Export data)

Reporting area	Hepatitis (viral, acute), by type														
	A					B					C				
	Current week	Previous 52 weeks		Cum 2015	Cum 2014	Current week	Previous 52 weeks		Cum 2015	Cum 2014	Current week	Previous 52 weeks		Cum 2015	Cum 2014
	Med	Max				Med	Max				Med	Max			
United States	10	23	39	357	378	29	51	132	903	975	11	36	73	472	762
New England	—	1	7	16	30	—	1	3	5	25	—	4	11	26	104
Connecticut	—	0	2	2	9	—	0	1	1	5	—	0	2	6	3
Maine	—	0	2	1	1	—	0	1	—	2	—	0	2	8	14
Massachusetts	—	1	3	9	14	—	0	2	4	15	—	3	10	12	87
New Hampshire	—	0	2	—	2	—	0	1	—	—	N	0	0	N	N
Rhode Island	—	0	2	3	3	U	0	0	U	U	U	0	0	U	U
Vermont	—	0	1	1	1	—	0	1	—	3	—	0	1	—	—
Mid. Atlantic	2	3	9	53	49	2	3	10	40	86	3	5	17	58	125
New Jersey	—	1	4	1	12	—	0	6	1	30	—	1	6	4	44
New York (Upstate)	1	1	4	13	7	—	1	3	9	9	2	2	10	27	33
New York City	—	0	5	26	19	—	1	6	20	17	—	0	1	3	8
Pennsylvania	1	1	4	13	11	2	1	3	10	30	1	1	4	24	40
E.N. Central	1	3	9	41	57	4	7	82	251	188	2	7	16	120	121
Illinois	—	1	9	13	18	—	0	2	6	23	—	0	2	6	12
Indiana	—	0	1	4	11	1	2	6	34	43	—	1	7	9	43
Michigan	1	1	4	11	13	—	1	3	11	20	—	2	8	67	17
Ohio	—	0	5	11	11	3	3	78	196	97	2	2	5	37	35
Wisconsin	—	0	1	2	4	—	0	57	4	5	—	0	4	1	14
W.N. Central	—	1	5	14	24	—	1	5	13	28	—	1	4	11	28
Iowa	—	0	2	2	3	—	0	2	7	3	—	0	0	—	—
Kansas	—	0	1	2	3	—	0	2	—	3	—	0	3	5	15
Minnesota	—	0	2	5	5	—	0	2	2	5	—	0	3	2	9
Missouri	—	0	3	1	8	—	0	3	4	12	—	0	2	3	3
Nebraska	—	0	2	—	2	—	0	1	—	4	—	0	1	1	1
North Dakota	—	0	3	4	3	—	0	0	—	—	—	0	0	—	—
South Dakota	—	0	1	—	—	—	0	1	—	1	—	0	0	—	—
S. Atlantic	3	5	11	84	70	12	16	31	310	299	2	6	32	114	147
Delaware	—	0	1	2	—	—	0	2	2	4	U	0	0	U	U
District of Columbia	—	0	0	—	—	—	0	0	—	—	—	0	0	—	—
Florida	2	2	4	30	32	3	6	12	118	101	—	2	4	27	33
Georgia	—	0	6	14	9	1	2	5	21	39	—	0	3	2	19
Maryland	—	0	3	5	8	—	1	4	14	9	—	0	3	11	17
North Carolina	1	1	7	16	7	8	1	19	66	45	2	0	26	41	37
South Carolina	—	0	1	3	2	—	1	4	11	11	—	0	1	1	1
Virginia	—	0	3	12	10	—	1	4	17	22	—	1	5	10	17
West Virginia	—	0	1	2	2	—	3	9	61	68	—	1	4	22	23
E.S. Central	—	1	5	20	14	6	10	17	165	191	2	6	11	82	109
Alabama	—	0	3	8	4	—	2	6	27	38	—	1	5	25	7
Kentucky	—	0	2	6	3	—	3	7	37	51	—	2	6	5	67
Mississippi	—	0	1	1	2	4	1	4	20	14	U	0	0	U	U
Tennessee	—	0	2	5	5	2	5	8	81	88	2	3	9	52	35
W.S. Central	2	2	8	40	40	3	5	38	47	71	1	2	24	19	33
Arkansas	—	0	1	4	1	—	0	2	4	7	—	0	1	—	7
Louisiana	—	0	1	1	5	—	1	5	4	27	—	0	3	2	8
Oklahoma	—	0	3	3	4	—	0	22	4	4	—	0	19	6	11
Texas	2	2	7	32	30	3	2	16	35	33	1	1	6	11	7
Mountain	1	1	5	31	28	—	2	5	19	32	—	1	6	9	45
Arizona	—	1	2	11	7	—	0	3	9	10	U	0	0	U	U
Colorado	1	0	2	7	8	—	0	2	1	11	—	0	2	3	11
Idaho	—	0	1	4	—	—	0	1	3	—	—	0	2	—	2
Montana	—	0	1	—	3	—	0	0	—	—	—	0	2	2	4
Nevada	—	0	2	3	2	—	0	3	5	9	—	0	2	3	2
New Mexico	—	0	2	3	4	—	0	1	—	—	—	0	2	—	10
Utah	—	0	1	1	4	—	0	2	1	2	—	0	2	1	16
Wyoming	—	0	1	2	—	—	0	0	—	—	—	0	0	—	—
Pacific	1	3	9	58	66	2	3	8	53	55	1	2	11	33	50
Alaska	—	0	1	2	—	—	0	1	—	—	—	0	0	—	—
California	—	2	7	41	59	—	2	5	31	36	—	1	5	14	20
Hawaii	—	0	2	2	—	—	0	1	6	—	—	0	0	—	—
Oregon	—	0	2	9	4	1	0	3	6	12	—	0	2	9	7
Washington	1	0	4	4	3	1	0	4	10	7	1	1	11	10	23
Territories															
American Samoa	—	—	—	—	—	—	—	—	—	—	—	—	—	—	—
C.N.M.I.	—	—	—	—	—	—	—	—	—	—	—	—	—	—	—
Guam	—	—	—	—	—	—	—	—	—	—	—	—	—	—	—
Puerto Rico	—	0	1	1	2	—	0	4	8	7	N	0	0	N	N
U.S. Virgin Islands	—	0	0	—	—	—	0	0	—	—	—	0	0	—	—

C.N.M.I.: Commonwealth of Northern Mariana Islands.

U: Unavailable. —: No reported cases. N: Not reportable. NN: Not Nationally Notifiable. NP: Nationally notifiable but not published. Cum: Cumulative year-to-date counts. Med: Median. Max: Maximum.

* Three low incidence conditions, rubella, rubella congenital, and tetanus, have been moved to Table II to facilitate case count verification with reporting jurisdictions.

[†] Case counts for reporting year 2014 and 2015 are provisional and subject to change. For further information on interpretation of these data, see <http://www.cdc.gov/nndss/document/ProvisionalNationalNotifiableDiseasesSurveillanceData20100927.pdf>. Data for TB are displayed in Table IV, which appears quarterly.

Morbidity and Mortality Weekly Report

TABLE II. (Continued) Provisional cases of selected notifiable diseases (≥1,000 cases reported during the preceding year), and selected* low frequency diseases, United States, weeks ending May 9, 2015, and May 3, 2014 (18th week)[†] (Export data)

Reporting area	Invasive Pneumococcal disease [§]										Legionellosis				
	All ages				Age <5										
	Current week	Previous 52 weeks		Cum 2015	Cum 2014	Current week	Previous 52 weeks		Cum 2015	Cum 2014	Current week	Previous 52 weeks		Cum 2015	Cum 2014
	Med	Max				Med	Max				Med	Max			
United States	171	268	723	5,899	7,007	12	21	41	382	448	34	91	184	1,090	988
New England	9	20	53	433	491	—	1	5	24	17	2	4	14	47	64
Connecticut	—	4	10	69	101	—	0	1	2	5	—	1	3	5	18
Maine	5	2	8	62	56	—	0	1	2	1	—	0	4	1	4
Massachusetts	—	8	29	208	251	—	0	3	12	8	—	2	8	30	29
New Hampshire	—	1	7	42	31	—	0	2	4	2	—	0	2	2	3
Rhode Island	4	1	8	24	25	—	0	2	1	1	1	0	4	6	9
Vermont	—	1	4	28	27	—	0	1	3	—	1	0	2	3	1
Mid. Atlantic	29	33	103	626	827	—	2	11	27	46	9	20	53	227	208
New Jersey	—	5	27	1	231	—	0	2	—	20	—	3	9	18	41
New York (Upstate)	17	15	53	330	334	—	1	9	17	12	3	7	22	97	73
New York City	12	12	28	295	262	—	0	2	10	14	6	3	15	58	30
Pennsylvania	N	—	—	N	N	N	0	0	N	N	—	6	15	54	64
E.N. Central	31	51	123	1,124	1,089	1	3	9	67	57	2	19	48	178	197
Illinois	N	0	0	N	N	—	1	3	10	12	—	4	15	23	36
Indiana	1	10	33	202	252	—	0	3	14	11	—	2	14	26	22
Michigan	4	13	37	303	238	—	1	3	13	10	—	4	19	27	36
Ohio	22	18	54	465	428	1	1	4	21	18	2	7	25	92	85
Wisconsin	4	7	16	154	171	—	0	2	9	6	—	1	8	10	18
W.N. Central	4	15	35	275	400	1	1	6	12	27	—	3	19	42	43
Iowa	N	0	0	N	N	N	0	0	N	N	—	0	3	8	5
Kansas	—	3	7	72	63	—	0	0	—	—	—	0	2	3	5
Minnesota	—	6	21	60	198	—	0	4	4	10	—	1	7	7	15
Missouri	N	0	0	N	N	—	0	2	2	11	—	1	12	15	12
Nebraska	2	2	8	62	62	1	0	4	4	4	—	0	3	7	2
North Dakota	—	1	6	29	36	—	0	1	2	2	—	0	1	1	2
South Dakota	2	2	11	52	41	—	0	0	—	—	—	0	2	1	2
S. Atlantic	32	48	125	1,119	1,524	2	4	10	82	107	11	19	37	257	192
Delaware	—	1	5	36	17	—	0	1	2	—	1	0	2	4	3
District of Columbia	—	1	4	22	24	—	0	2	4	—	—	0	0	—	—
Florida	6	8	17	187	511	1	1	6	25	40	6	6	11	102	77
Georgia	8	15	43	349	406	—	1	4	18	20	—	1	5	16	18
Maryland	13	7	23	206	221	1	0	3	11	15	2	2	10	28	31
North Carolina	N	0	0	N	N	N	0	0	N	N	—	3	21	51	25
South Carolina	5	7	32	234	222	—	0	3	12	15	—	1	3	14	12
Virginia	N	0	2	N	N	—	0	2	6	11	2	2	9	31	20
West Virginia	—	4	14	85	123	—	0	1	4	6	—	1	4	11	6
E.S. Central	11	24	71	641	663	1	1	4	35	47	7	6	19	70	48
Alabama	2	3	15	96	102	—	0	2	8	7	4	1	6	22	8
Kentucky	—	3	9	78	89	—	0	2	—	5	—	2	8	14	16
Mississippi	1	3	10	86	118	—	0	3	7	13	—	0	2	7	8
Tennessee	8	13	48	381	354	1	1	4	20	22	3	2	13	27	16
W.S. Central	40	37	226	932	967	4	3	15	78	82	2	8	33	95	59
Arkansas	5	5	37	131	98	1	0	3	9	5	1	0	5	6	5
Louisiana	6	5	16	156	189	—	0	4	9	12	—	1	4	16	12
Oklahoma	N	0	0	N	N	—	0	2	6	7	—	0	10	6	3
Texas	29	22	180	645	680	3	2	12	54	58	1	5	26	67	39
Mountain	14	29	66	687	967	3	2	9	52	57	—	4	13	68	60
Arizona	11	11	39	344	437	1	1	5	25	22	—	1	4	35	15
Colorado	—	7	24	82	207	—	0	3	8	9	—	1	7	9	20
Idaho	N	0	0	N	N	1	0	1	4	2	—	0	2	5	7
Montana	—	1	3	22	18	N	0	1	N	N	—	0	1	1	2
Nevada	—	3	10	74	61	—	0	2	6	3	—	0	3	8	3
New Mexico	2	5	15	146	160	1	0	2	8	10	—	0	1	2	1
Utah	—	1	13	4	78	—	0	3	—	10	—	0	2	8	12
Wyoming	1	0	4	15	6	—	0	1	1	1	—	0	1	—	—
Pacific	1	3	8	62	79	—	0	2	5	8	1	8	21	106	117
Alaska	1	1	5	40	35	—	0	1	4	4	—	0	0	—	2
California	N	0	0	N	N	N	0	0	N	N	—	6	16	75	101
Hawaii	—	1	4	22	44	—	0	1	1	4	—	0	1	3	2
Oregon	N	0	0	N	N	N	0	0	N	N	1	0	3	12	9
Washington	N	0	0	N	N	N	0	0	N	N	—	0	9	16	3
Territories															
American Samoa	N	—	—	N	N	—	—	—	—	—	N	—	—	N	N
C.N.M.I.	—	—	—	—	—	—	—	—	—	—	—	—	—	—	—
Guam	—	—	—	—	—	—	—	—	—	—	—	—	—	—	—
Puerto Rico	—	0	0	—	—	—	0	0	—	—	—	0	1	2	1
U.S. Virgin Islands	—	0	0	—	—	—	0	0	—	—	—	0	0	—	—

C.N.M.I.: Commonwealth of Northern Mariana Islands.

U: Unavailable. —: No reported cases. N: Not reportable. NN: Not Nationally Notifiable. NP: Nationally notifiable but not published. Cum: Cumulative year-to-date counts. Med: Median. Max: Maximum.

* Three low incidence conditions, rubella, rubella congenital, and tetanus, have been moved to Table II to facilitate case count verification with reporting jurisdictions.

[†] Case counts for reporting year 2014 and 2015 are provisional and subject to change. For further information on interpretation of these data, see <http://www.cdc.gov/nndss/document/ProvisionalNationalNotifiableDiseasesSurveillanceData20100927.pdf>. Data for TB are displayed in Table IV, which appears quarterly.

[§] Includes drug resistant and susceptible cases of Invasive Pneumococcal Disease. This condition was previously named Streptococcus pneumoniae invasive disease and cases were reported to CDC using different event codes to specify whether the cases were drug resistant or in a defined age group, such as <5 years. Since 2010, case notifications for this condition were consolidated under one event code for Invasive pneumococcal disease.

Morbidity and Mortality Weekly Report

TABLE II. (Continued) Provisional cases of selected notifiable diseases (≥1,000 cases reported during the preceding year), and selected* low frequency diseases, United States, weeks ending May 9, 2015, and May 3, 2014 (18th week)[†] (Export data)

Reporting area	Lyme disease					Malaria					Meningococcal disease, invasive [§] All serogroups				
	Current week	Previous 52 weeks		Cum 2015	Cum 2014	Current week	Previous 52 weeks		Cum 2015	Cum 2014	Current week	Previous 52 weeks		Cum 2015	Cum 2014
		Med	Max				Med	Max				Med	Max		
United States	1,331	437	2,012	3,490	4,029	8	26	58	179	388	4	7	14	139	196
New England	2	129	762	363	1,295	—	1	8	10	28	—	0	3	9	9
Connecticut	—	29	178	66	279	—	0	2	2	6	—	0	1	1	2
Maine	—	16	94	71	105	—	0	1	—	3	—	0	1	1	—
Massachusetts	—	51	466	120	685	—	1	5	7	14	—	0	1	3	6
New Hampshire	—	1	67	1	106	—	0	1	—	2	—	0	0	—	—
Rhode Island	—	11	84	59	61	—	0	3	1	3	—	0	2	2	1
Vermont	2	7	48	46	59	—	0	2	—	—	—	0	1	2	—
Mid. Atlantic	1,306	201	967	2,547	2,045	2	6	24	49	95	—	1	4	14	14
New Jersey	—	46	203	289	627	—	1	5	9	17	—	0	1	2	2
New York (Upstate)	10	42	172	214	248	—	1	4	13	12	—	0	1	3	4
New York City	560	2	38	590	475	2	3	16	21	45	—	0	2	4	4
Pennsylvania	736	86	642	1,454	695	—	1	6	6	21	—	0	2	5	4
E.N. Central	—	16	148	52	153	—	2	6	22	34	1	1	4	15	20
Illinois	—	1	18	4	13	—	1	4	8	10	—	0	1	1	7
Indiana	—	1	12	4	5	—	0	3	3	5	—	0	1	2	2
Michigan	—	1	11	5	7	—	0	2	1	8	—	0	1	2	3
Ohio	—	2	10	14	9	—	1	3	9	9	1	0	4	10	5
Wisconsin	—	10	117	25	119	—	0	2	1	2	—	0	1	—	3
W.N. Central	—	10	99	5	115	—	1	6	5	33	—	0	2	9	11
Iowa	—	1	20	2	7	—	0	3	2	4	—	0	1	3	1
Kansas	—	0	2	1	4	—	0	1	—	6	—	0	1	2	1
Minnesota	—	8	77	—	103	—	0	5	—	15	—	0	1	1	2
Missouri	—	0	2	—	1	—	0	1	2	4	—	0	1	2	4
Nebraska	—	0	3	2	—	—	0	2	1	1	—	0	1	1	—
North Dakota	—	0	2	—	—	—	0	1	—	3	—	0	1	—	1
South Dakota	—	0	1	—	—	—	0	1	—	—	—	0	0	—	2
S. Atlantic	21	58	195	485	372	3	6	19	47	101	1	1	6	32	45
Delaware	6	5	25	45	80	—	0	1	—	1	—	0	0	—	1
District of Columbia	—	1	4	9	8	—	0	2	1	—	—	0	1	3	—
Florida	2	2	12	34	20	—	1	4	11	12	—	1	3	13	17
Georgia	—	0	1	—	1	—	1	5	3	19	—	0	3	5	7
Maryland	7	20	81	216	141	3	2	8	18	46	—	0	1	1	4
North Carolina	—	0	78	25	14	—	0	8	2	4	1	0	1	3	11
South Carolina	—	1	3	10	3	—	0	1	1	2	—	0	3	—	1
Virginia	6	17	149	123	92	—	1	5	11	16	—	0	2	7	4
West Virginia	—	1	15	23	13	—	0	1	—	1	—	0	1	—	—
E.S. Central	1	2	10	17	16	1	0	5	5	16	—	0	2	4	5
Alabama	1	1	7	13	4	—	0	3	3	3	—	0	1	3	1
Kentucky	—	0	5	4	10	—	0	1	—	5	—	0	1	—	1
Mississippi	—	0	1	—	—	—	0	1	—	—	—	0	1	—	—
Tennessee	—	0	3	—	2	1	0	2	2	8	—	0	2	1	3
W.S. Central	—	0	7	2	1	1	2	10	12	23	2	0	3	13	21
Arkansas	—	0	0	—	—	—	0	1	2	2	—	0	1	1	1
Louisiana	—	0	1	—	—	—	0	1	2	4	—	0	1	1	3
Oklahoma	—	0	0	—	—	1	0	3	2	1	1	0	1	2	5
Texas	—	0	7	2	1	—	1	9	6	16	1	0	3	9	12
Mountain	1	1	8	8	10	—	1	6	4	21	—	0	2	4	17
Arizona	—	0	6	5	2	—	0	3	1	10	—	0	1	1	7
Colorado	—	0	0	—	—	—	0	3	—	8	—	0	2	2	3
Idaho	1	0	1	2	3	—	0	1	—	—	—	0	1	—	1
Montana	—	0	2	—	1	—	0	1	1	—	—	0	1	—	2
Nevada	—	0	2	—	1	—	0	2	—	—	—	0	1	—	2
New Mexico	—	0	0	—	—	—	0	1	—	1	—	0	1	1	1
Utah	—	0	2	—	3	—	0	1	2	2	—	0	0	—	1
Wyoming	—	0	1	1	—	—	0	0	—	—	—	0	0	—	—
Pacific	—	2	8	11	22	1	3	7	25	37	—	1	8	39	54
Alaska	—	0	1	1	1	—	0	1	1	1	—	0	1	1	—
California	—	1	5	6	13	—	1	5	16	23	—	0	5	18	37
Hawaii	N	0	0	N	N	—	0	1	—	1	—	0	1	3	1
Oregon	—	1	3	4	8	—	0	2	6	2	—	0	3	12	11
Washington	—	0	2	—	—	1	0	3	2	10	—	0	6	5	5
Territories															
American Samoa	N	—	—	N	N	—	—	—	—	—	—	—	—	—	—
C.N.M.I.	—	—	—	—	—	—	—	—	—	—	—	—	—	—	—
Guam	—	—	—	—	—	—	—	—	—	—	—	—	—	—	—
Puerto Rico	N	0	0	N	N	—	0	1	—	—	—	0	0	—	—
U.S. Virgin Islands	N	0	0	N	N	—	0	0	—	—	—	0	0	—	—

C.N.M.I.: Commonwealth of Northern Mariana Islands.

U: Unavailable. —: No reported cases. N: Not reportable. NN: Not Nationally Notifiable. NP: Nationally notifiable but not published. Cum: Cumulative year-to-date counts. Med: Median. Max: Maximum.

* Three low incidence conditions, rubella, rubella congenital, and tetanus, have been moved to Table II to facilitate case count verification with reporting jurisdictions.

[†] Case counts for reporting year 2014 and 2015 are provisional and subject to change. For further information on interpretation of these data, see <http://www.cdc.gov/nndss/document/ProvisionalNationalNotifiableDiseasesSurveillanceData20100927.pdf>. Data for TB are displayed in Table IV, which appears quarterly.

[§] Data for meningococcal disease, invasive caused by serogroups ACWY; serogroup B; other serogroup; and unknown serogroup are available in Table I.

Morbidity and Mortality Weekly Report

TABLE II. (Continued) Provisional cases of selected notifiable diseases (≥1,000 cases reported during the preceding year), and selected* low frequency diseases, United States, weeks ending May 9, 2015, and May 3, 2014 (18th week)[†] (Export data)

Reporting area	Mumps					Pertussis					Rabies, animal				
	Current week	Previous 52 weeks		Cum 2015	Cum 2014	Current week	Previous 52 weeks		Cum 2015	Cum 2014	Current week	Previous 52 weeks		Cum 2015	Cum 2014
		Med	Max				Med	Max				Med	Max		
United States	4	10	61	129	635	194	546	825	6,030	9,113	42	69	135	758	1,072
New England	—	0	2	—	2	1	22	55	235	220	2	6	16	61	70
Connecticut	—	0	2	—	—	—	2	7	19	10	—	3	13	41	36
Maine	—	0	0	—	—	1	10	35	159	74	—	1	3	8	7
Massachusetts	—	0	2	—	2	—	6	16	42	56	—	0	0	—	—
New Hampshire	—	0	2	—	—	—	1	5	6	20	—	0	2	4	3
Rhode Island	—	0	0	—	—	—	0	10	7	53	—	0	3	3	9
Vermont	—	0	0	—	—	—	0	5	2	7	2	1	4	5	15
Mid. Atlantic	—	2	10	28	111	19	41	99	608	529	10	12	31	90	168
New Jersey	—	0	3	5	27	—	6	16	63	103	—	0	0	—	—
New York (Upstate)	—	0	3	7	2	7	14	57	197	219	10	7	15	90	88
New York City	—	1	6	12	77	—	3	8	50	16	—	0	0	—	—
Pennsylvania	—	0	5	4	5	12	16	38	298	191	—	7	18	—	80
E.N. Central	1	3	48	33	471	7	94	188	774	1,570	3	1	8	15	4
Illinois	—	1	6	17	85	—	12	39	133	150	1	0	2	4	—
Indiana	—	0	2	—	14	—	7	21	47	128	—	0	4	—	—
Michigan	—	0	3	1	5	1	19	73	154	315	—	0	5	1	2
Ohio	1	1	32	14	335	6	22	53	316	619	2	0	5	10	2
Wisconsin	—	0	11	1	32	—	22	82	124	358	N	0	0	N	N
W.N. Central	—	0	6	5	5	3	52	98	728	645	3	3	8	63	32
Iowa	—	0	3	2	2	—	4	11	41	56	—	0	0	—	—
Kansas	—	0	1	—	—	—	9	23	122	105	—	2	5	44	19
Minnesota	—	0	6	2	2	—	18	40	66	213	—	0	0	—	—
Missouri	—	0	2	1	1	—	8	23	50	155	—	0	3	—	5
Nebraska	—	0	0	—	—	3	6	72	441	80	2	0	3	8	3
North Dakota	—	0	1	—	—	—	0	8	4	5	—	0	0	—	—
South Dakota	—	0	0	—	—	—	1	11	4	31	1	0	2	11	5
S. Atlantic	2	1	10	35	13	19	48	103	511	1,010	5	13	26	198	302
Delaware	—	0	1	1	—	—	0	3	4	188	—	0	0	—	—
District of Columbia	—	0	2	—	10	—	0	3	1	10	—	0	0	—	—
Florida	1	0	1	4	—	8	10	32	122	263	—	0	19	26	94
Georgia	—	0	1	—	—	—	6	17	61	131	—	0	0	—	—
Maryland	—	0	1	2	—	—	3	16	45	47	—	6	19	66	82
North Carolina	1	0	2	2	—	7	10	76	153	223	5	6	15	95	110
South Carolina	—	0	1	—	—	—	3	9	48	30	N	0	0	N	N
Virginia	—	0	8	25	3	4	8	39	58	110	—	0	0	—	—
West Virginia	—	0	1	1	—	—	0	4	19	8	—	0	4	11	16
E.S. Central	—	0	2	6	6	1	17	31	188	308	1	1	7	22	19
Alabama	—	0	1	1	1	—	5	13	64	59	—	1	7	18	16
Kentucky	—	0	2	2	1	—	4	11	32	132	1	0	2	4	3
Mississippi	—	0	1	1	—	—	1	5	6	26	—	0	1	—	—
Tennessee	—	0	2	2	4	1	5	16	86	91	—	0	0	—	—
W.S. Central	—	0	2	7	7	23	51	182	436	807	18	24	103	304	335
Arkansas	—	0	1	2	1	—	3	14	11	107	5	1	13	33	71
Louisiana	—	0	1	1	—	—	1	6	17	23	—	0	0	—	—
Oklahoma	—	0	2	1	2	—	0	32	12	1	1	1	10	26	36
Texas	—	0	2	3	4	23	44	157	396	676	12	20	103	245	228
Mountain	1	0	6	11	9	42	69	118	997	1,639	—	1	9	2	44
Arizona	—	0	2	—	8	7	9	29	263	234	N	0	0	N	N
Colorado	—	0	1	2	1	27	21	33	348	541	—	0	0	—	—
Idaho	1	0	6	9	—	4	5	23	90	123	—	0	2	—	—
Montana	—	0	1	—	—	4	9	27	116	115	N	0	0	N	N
Nevada	—	0	1	—	—	—	2	7	11	51	—	0	5	1	2
New Mexico	—	0	1	—	—	—	4	16	45	141	—	0	3	1	—
Utah	—	0	1	—	—	—	11	29	124	408	—	0	4	—	1
Wyoming	—	0	0	—	—	—	0	5	—	26	—	0	5	—	41
Pacific	—	0	5	4	11	79	124	350	1,553	2,385	—	1	21	3	98
Alaska	—	0	1	—	—	—	3	18	57	20	—	0	1	2	2
California	—	0	4	1	11	—	98	324	888	2,132	—	0	21	—	96
Hawaii	—	0	1	—	—	—	0	4	11	10	—	0	0	—	—
Oregon	—	0	1	—	—	1	9	18	174	143	—	0	3	1	—
Washington	—	0	5	3	—	78	12	139	423	80	—	0	0	—	—
Territories	—	—	—	—	—	—	—	—	—	—	—	—	—	—	—
American Samoa	—	—	—	—	—	—	—	—	—	—	N	—	—	N	N
C.N.M.I.	—	—	—	—	—	—	—	—	—	—	—	—	—	—	—
Guam	—	—	—	—	—	—	—	—	—	—	—	—	—	—	—
Puerto Rico	—	0	1	2	—	—	0	2	5	6	—	0	4	4	7
U.S. Virgin Islands	—	0	0	—	—	—	0	0	—	—	—	0	0	—	—

C.N.M.I.: Commonwealth of Northern Mariana Islands.

U: Unavailable. —: No reported cases. N: Not reportable. NN: Not Nationally Notifiable. NP: Nationally notifiable but not published. Cum: Cumulative year-to-date counts. Med: Median. Max: Maximum.

* Three low incidence conditions, rubella, rubella congenital, and tetanus, have been moved to Table II to facilitate case count verification with reporting jurisdictions.

[†] Case counts for reporting year 2014 and 2015 are provisional and subject to change. For further information on interpretation of these data, see <http://www.cdc.gov/nndss/document/ProvisionalNationalNotifiableDiseasesSurveillanceData20100927.pdf>. Data for TB are displayed in Table IV, which appears quarterly.

Morbidity and Mortality Weekly Report

TABLE II. (Continued) Provisional cases of selected notifiable diseases (≥1,000 cases reported during the preceding year), and selected* low frequency diseases, United States, weeks ending May 9, 2015, and May 3, 2014 (18th week)[†] (Export data)

Reporting area	Rubella					Rubella, congenital syndrome					Salmonellosis				
	Current week	Previous 52 weeks		Cum 2015	Cum 2014	Current week	Previous 52 weeks		Cum 2015	Cum 2014	Current week	Previous 52 weeks		Cum 2015	Cum 2014
		Med	Max				Med	Max				Med	Max		
United States	—	0	1	2	2	—	0	0	—	1	393	887	1,588	9,043	9,650
New England	—	0	0	—	—	—	0	0	—	—	2	40	87	444	455
Connecticut	—	0	0	—	—	—	0	0	—	—	—	8	23	120	106
Maine	—	0	0	—	—	—	0	0	—	—	1	2	6	26	31
Massachusetts	—	0	0	—	—	—	0	0	—	—	—	22	53	233	219
New Hampshire	—	0	0	—	—	—	0	0	—	—	—	2	8	28	47
Rhode Island	—	0	0	—	—	—	0	0	—	—	—	2	12	17	23
Vermont	—	0	0	—	—	—	0	0	—	—	1	1	7	20	29
Mid. Atlantic	—	0	1	—	—	—	0	0	—	—	46	75	187	860	1,048
New Jersey	—	0	0	—	—	—	0	0	—	—	—	17	50	71	263
New York (Upstate)	—	0	0	—	—	—	0	0	—	—	23	23	58	307	263
New York City	—	0	0	—	—	—	0	0	—	—	12	17	35	233	237
Pennsylvania	—	0	1	—	—	—	0	0	—	—	11	25	69	249	285
E.N. Central	—	0	1	1	—	—	0	0	—	1	29	96	203	1,018	1,277
Illinois	—	0	1	—	—	—	0	0	—	1	—	27	61	336	367
Indiana	—	0	0	—	—	—	0	0	—	—	—	12	40	117	167
Michigan	—	0	0	—	—	—	0	0	—	—	7	17	56	214	224
Ohio	—	0	0	—	—	—	0	0	—	—	22	23	46	320	297
Wisconsin	—	0	1	1	—	—	0	0	—	—	—	12	67	31	222
W.N. Central	—	0	1	1	—	—	0	0	—	—	6	42	79	502	436
Iowa	—	0	0	—	—	—	0	0	—	—	1	11	23	177	113
Kansas	—	0	0	—	—	—	0	0	—	—	1	8	21	100	77
Minnesota	—	0	0	—	—	—	0	0	—	—	—	0	0	—	—
Missouri	—	0	1	1	—	—	0	0	—	—	—	16	36	86	143
Nebraska	—	0	1	—	—	—	0	0	—	—	4	5	13	75	35
North Dakota	—	0	0	—	—	—	0	0	—	—	—	1	8	14	22
South Dakota	—	0	0	—	—	—	0	0	—	—	—	3	12	50	46
S. Atlantic	—	0	0	—	—	—	0	0	—	—	199	235	560	2,577	2,584
Delaware	—	0	0	—	—	—	0	0	—	—	1	2	15	22	22
District of Columbia	—	0	0	—	—	—	0	0	—	—	—	0	5	—	15
Florida	—	0	0	—	—	—	0	0	—	—	125	103	225	1,201	1,197
Georgia	—	0	0	—	—	—	0	0	—	—	18	35	93	350	330
Maryland	—	0	0	—	—	—	0	0	—	—	9	14	50	191	189
North Carolina	—	0	0	—	—	—	0	0	—	—	25	27	190	354	430
South Carolina	—	0	0	—	—	—	0	0	—	—	6	23	77	206	182
Virginia	—	0	0	—	—	—	0	0	—	—	15	20	58	213	176
West Virginia	—	0	0	—	—	—	0	0	—	—	—	3	12	40	43
E.S. Central	—	0	0	—	—	—	0	0	—	—	8	55	155	489	690
Alabama	—	0	0	—	—	—	0	0	—	—	—	18	54	126	244
Kentucky	—	0	0	—	—	—	0	0	—	—	—	10	27	96	128
Mississippi	—	0	0	—	—	—	0	0	—	—	—	12	59	103	126
Tennessee	—	0	0	—	—	—	0	0	—	—	8	15	54	164	192
W.S. Central	—	0	0	—	—	—	0	0	—	—	41	162	280	1,269	1,058
Arkansas	—	0	0	—	—	—	0	0	—	—	12	13	29	111	73
Louisiana	—	0	0	—	—	—	0	0	—	—	17	21	50	200	181
Oklahoma	—	0	0	—	—	—	0	0	—	—	12	13	53	114	131
Texas	—	0	0	—	—	—	0	0	—	—	—	98	225	844	673
Mountain	—	0	0	—	1	—	0	0	—	—	35	61	94	741	716
Arizona	—	0	0	—	—	—	0	0	—	—	29	20	41	299	228
Colorado	—	0	0	—	—	—	0	0	—	—	—	10	26	48	159
Idaho	—	0	0	—	—	—	0	0	—	—	3	3	31	88	42
Montana	—	0	0	—	—	—	0	0	—	—	2	3	35	70	38
Nevada	—	0	0	—	—	—	0	0	—	—	—	3	8	45	33
New Mexico	—	0	0	—	—	—	0	0	—	—	—	6	16	69	68
Utah	—	0	0	—	1	—	0	0	—	—	1	7	15	104	127
Wyoming	—	0	0	—	—	—	0	0	—	—	—	1	6	18	21
Pacific	—	0	1	—	1	—	0	0	—	—	27	103	187	1,143	1,386
Alaska	—	0	0	—	—	—	0	0	—	—	—	1	5	16	22
California	—	0	1	—	1	—	0	0	—	—	9	78	133	806	1,076
Hawaii	—	0	0	—	—	—	0	0	—	—	—	5	15	64	87
Oregon	—	0	0	—	—	—	0	0	—	—	3	8	17	105	94
Washington	—	0	0	—	—	—	0	0	—	—	15	14	64	152	107
Territories	—	—	—	—	—	—	—	—	—	—	—	—	—	—	—
American Samoa	—	—	—	—	—	—	—	—	—	—	—	—	—	—	—
C.N.M.I.	—	—	—	—	—	—	—	—	—	—	—	—	—	—	—
Guam	—	—	—	—	—	—	—	—	—	—	—	—	—	—	—
Puerto Rico	—	0	0	—	—	—	0	0	—	—	—	15	34	89	187
U.S. Virgin Islands	—	0	0	—	—	—	0	0	—	—	—	0	0	—	—

C.N.M.I.: Commonwealth of Northern Mariana Islands.

U: Unavailable. —: No reported cases. N: Not reportable. NN: Not Nationally Notifiable. NP: Nationally notifiable but not published. Cum: Cumulative year-to-date counts. Med: Median. Max: Maximum.

* Three low incidence conditions, rubella, rubella congenital, and tetanus, have been moved to Table II to facilitate case count verification with reporting jurisdictions.

[†] Case counts for reporting year 2014 and 2015 are provisional and subject to change. For further information on interpretation of these data, see <http://www.cdc.gov/nndss/document/ProvisionalNationalNotifiableDiseasesSurveillanceData20100927.pdf>. Data for TB are displayed in Table IV, which appears quarterly.

Morbidity and Mortality Weekly Report

TABLE II. (Continued) Provisional cases of selected notifiable diseases (≥1,000 cases reported during the preceding year), and selected* low frequency diseases, United States, weeks ending May 9, 2015, and May 3, 2014 (18th week)[†] (Export data)

Reporting area	Shiga toxin-producing <i>E. coli</i> (STEC) [§]					Shigellosis				
	Current week	Previous 52 weeks		Cum 2015	Cum 2014	Current week	Previous 52 weeks		Cum 2015	Cum 2014
		Med	Max				Med	Max		
United States	40	101	216	970	1,155	209	410	561	5,034	4,305
New England	2	4	15	46	44	—	6	14	60	83
Connecticut	1	1	4	18	11	—	1	5	18	10
Maine	1	0	4	5	4	—	0	3	1	5
Massachusetts	—	1	6	8	19	—	3	8	37	53
New Hampshire	—	0	2	8	3	—	0	2	—	6
Rhode Island	—	0	3	3	1	—	0	7	3	8
Vermont	—	0	2	4	6	—	0	2	1	1
Mid. Atlantic	9	10	27	124	123	22	26	81	736	252
New Jersey	—	2	8	18	38	—	6	17	87	51
New York (Upstate)	5	4	15	43	30	10	5	27	188	75
New York City	2	1	5	28	18	12	10	51	401	86
Pennsylvania	2	3	9	35	37	—	4	14	60	40
E.N. Central	10	12	42	106	162	12	68	160	574	446
Illinois	—	3	9	18	38	—	15	84	156	96
Indiana	—	1	11	7	13	—	25	75	87	124
Michigan	1	2	8	26	26	1	7	21	135	29
Ohio	9	3	12	45	42	7	11	22	139	145
Wisconsin	—	3	14	10	43	4	6	23	57	52
W.N. Central	1	10	38	89	113	5	47	93	311	521
Iowa	—	2	15	10	22	2	2	12	55	91
Kansas	—	1	7	20	18	—	1	5	20	10
Minnesota	—	0	0	—	—	—	0	0	—	—
Missouri	—	3	14	19	43	—	29	63	172	92
Nebraska	1	2	9	27	16	3	3	22	31	32
North Dakota	—	0	4	4	8	—	0	2	2	11
South Dakota	—	1	4	9	6	—	5	29	31	285
S. Atlantic	5	10	18	123	127	55	82	161	1,183	1,417
Delaware	—	0	2	1	1	—	1	4	12	21
District of Columbia	—	0	1	—	3	—	0	3	—	21
Florida	2	2	6	41	36	39	39	86	583	761
Georgia	—	1	7	29	33	8	19	45	308	257
Maryland	1	1	5	14	17	1	6	12	86	57
North Carolina	2	1	5	16	15	6	4	85	91	227
South Carolina	—	0	3	7	2	—	3	13	52	31
Virginia	—	2	7	10	17	1	4	16	49	40
West Virginia	—	0	3	5	3	—	0	2	2	2
E.S. Central	3	5	16	43	49	13	36	62	392	453
Alabama	—	0	3	—	5	—	9	30	90	89
Kentucky	—	1	7	8	14	6	8	30	171	27
Mississippi	—	0	3	6	7	—	2	11	32	81
Tennessee	3	2	9	29	23	7	14	31	99	256
W.S. Central	4	14	88	156	217	89	81	252	1,099	643
Arkansas	—	1	5	18	28	4	4	197	15	128
Louisiana	1	0	12	28	5	1	2	5	41	67
Oklahoma	3	1	12	12	19	10	3	41	116	14
Texas	—	9	78	98	165	74	59	171	927	434
Mountain	3	9	29	93	130	4	13	27	189	215
Arizona	1	1	6	25	21	2	8	18	139	82
Colorado	—	2	14	13	39	—	1	5	6	22
Idaho	—	2	9	13	18	1	0	2	4	4
Montana	2	1	4	14	8	1	0	7	10	5
Nevada	—	1	3	7	11	—	0	6	9	8
New Mexico	—	1	3	6	14	—	1	5	12	12
Utah	—	1	7	11	16	—	0	4	9	12
Wyoming	—	0	4	4	3	—	0	5	—	70
Pacific	3	19	67	190	190	9	26	78	490	275
Alaska	—	0	0	—	—	—	0	1	2	1
California	—	13	27	108	136	5	20	77	418	199
Hawaii	—	0	5	16	2	—	0	4	15	9
Oregon	2	4	9	45	25	—	0	6	10	16
Washington	1	1	56	21	27	4	2	19	45	50
Territories										
American Samoa	—	—	—	—	—	—	—	—	—	—
C.N.M.I.	—	—	—	—	—	—	—	—	—	—
Guam	—	—	—	—	—	—	—	—	—	—
Puerto Rico	—	0	0	—	4	—	0	3	2	4
U.S. Virgin Islands	—	0	0	—	—	—	0	0	—	—

C.N.M.I.: Commonwealth of Northern Mariana Islands.

U: Unavailable. —: No reported cases. N: Not reportable. NN: Not Nationally Notifiable. NP: Nationally notifiable but not published. Cum: Cumulative year-to-date counts. Med: Median. Max: Maximum.

* Three low incidence conditions, rubella, rubella congenital, and tetanus, have been moved to Table II to facilitate case count verification with reporting jurisdictions.

[†] Case counts for reporting year 2014 and 2015 are provisional and subject to change. For further information on interpretation of these data, see <http://www.cdc.gov/nndss/document/ProvisionalNationalNotifiableDiseasesSurveillanceData20100927.pdf>. Data for TB are displayed in Table IV, which appears quarterly.

[§] Includes *E. coli* O157:H7; Shiga toxin-positive, serogroup non-O157; and Shiga toxin-positive, not serogrouped.

Morbidity and Mortality Weekly Report

TABLE II. (Continued) Provisional cases of selected notifiable diseases (≥1,000 cases reported during the preceding year), and selected* low frequency diseases, United States, weeks ending May 9, 2015, and May 3, 2014 (18th week)[†] (Export data)

Reporting area	Spotted Fever Rickettsiosis (including RMSF) [§]										Syphilis, primary and secondary				
	Confirmed					Probable					Previous 52 weeks		Cum 2015	Cum 2014	
	Current week	Previous 52 weeks		Cum 2015	Cum 2014	Current week	Previous 52 weeks		Cum 2015	Cum 2014	Current week	Med			Max
United States	—	0	0	—	—	—	1	9	9	10	101	380	457	5,764	6,415
New England	—	0	0	—	—	—	0	0	—	—	—	9	19	138	196
Connecticut	—	0	0	—	—	—	0	0	—	—	—	1	5	7	40
Maine	—	0	0	—	—	—	0	0	—	—	—	0	6	9	5
Massachusetts	—	0	0	—	—	—	0	0	—	—	—	5	11	83	119
New Hampshire	—	0	0	—	—	—	0	0	—	—	—	0	4	11	10
Rhode Island	—	0	0	—	—	—	0	0	—	—	—	1	5	24	21
Vermont	—	0	0	—	—	—	0	0	—	—	—	0	2	4	1
Mid. Atlantic	—	0	0	—	—	—	0	0	—	—	18	47	68	726	808
New Jersey	—	0	0	—	—	—	0	0	—	—	—	5	13	57	94
New York (Upstate)	—	0	0	—	—	—	0	0	—	—	13	7	24	113	108
New York City	—	0	0	—	—	—	0	0	—	—	3	24	37	372	452
Pennsylvania	—	0	0	—	—	—	0	0	—	—	2	11	19	184	154
E.N. Central	—	0	0	—	—	—	0	0	—	—	6	37	60	437	679
Illinois	—	0	0	—	—	—	0	0	—	—	5	14	29	157	283
Indiana	—	0	0	—	—	—	0	0	—	—	1	4	10	71	61
Michigan	—	0	0	—	—	—	0	0	—	—	—	6	16	15	143
Ohio	—	0	0	—	—	—	0	0	—	—	—	11	21	172	166
Wisconsin	—	0	0	—	—	—	0	0	—	—	—	2	5	22	26
W.N. Central	—	0	0	—	—	—	1	9	9	10	1	15	22	222	314
Iowa	—	0	0	—	—	—	0	0	—	—	—	1	5	10	20
Kansas	—	0	0	—	—	—	1	9	9	10	—	1	3	22	18
Minnesota	—	0	0	—	—	—	0	0	—	—	1	4	11	62	88
Missouri	—	0	0	—	—	—	0	0	—	—	—	6	13	98	120
Nebraska	—	0	0	—	—	—	0	0	—	—	—	1	3	16	29
North Dakota	—	0	0	—	—	—	0	0	—	—	—	0	3	3	6
South Dakota	—	0	0	—	—	—	0	0	—	—	—	0	3	11	33
S. Atlantic	—	0	0	—	—	—	0	0	—	—	50	98	121	1,710	1,509
Delaware	—	0	0	—	—	—	0	0	—	—	1	0	9	13	11
District of Columbia	—	0	0	—	—	—	0	0	—	—	—	0	0	—	—
Florida	—	0	0	—	—	—	0	0	—	—	2	34	49	529	568
Georgia	—	0	0	—	—	—	0	0	—	—	29	24	41	506	412
Maryland	—	0	0	—	—	—	0	0	—	—	—	7	15	85	152
North Carolina	—	0	0	—	—	—	0	0	—	—	13	17	41	355	169
South Carolina	—	0	0	—	—	—	0	0	—	—	5	5	11	101	81
Virginia	—	0	0	—	—	—	0	0	—	—	—	5	31	108	103
West Virginia	—	0	0	—	—	—	0	0	—	—	—	0	4	13	13
E.S. Central	—	0	0	—	—	—	0	0	—	—	8	15	25	242	303
Alabama	—	0	0	—	—	—	0	0	—	—	3	3	9	83	50
Kentucky	—	0	0	—	—	—	0	0	—	—	1	3	8	51	44
Mississippi	—	0	0	—	—	—	0	0	—	—	—	3	9	44	130
Tennessee	—	0	0	—	—	—	0	0	—	—	4	4	12	64	79
W.S. Central	—	0	0	—	—	—	0	0	—	—	—	49	69	675	701
Arkansas	—	0	0	—	—	—	0	0	—	—	—	1	11	10	41
Louisiana	—	0	0	—	—	—	0	0	—	—	—	9	26	116	145
Oklahoma	—	0	0	—	—	—	0	0	—	—	—	2	11	26	49
Texas	—	0	0	—	—	—	0	0	—	—	—	33	50	523	466
Mountain	—	0	0	—	—	—	0	0	—	—	3	22	36	280	431
Arizona	—	0	0	—	—	—	0	0	—	—	—	10	22	91	140
Colorado	—	0	0	—	—	—	0	0	—	—	—	4	9	66	51
Idaho	—	0	0	—	—	—	0	0	—	—	—	0	2	5	3
Montana	—	0	0	—	—	—	0	0	—	—	—	0	2	1	2
Nevada	—	0	0	—	—	—	0	0	—	—	3	4	13	81	173
New Mexico	—	0	0	—	—	—	0	0	—	—	—	2	7	23	45
Utah	—	0	0	—	—	—	0	0	—	—	—	1	4	12	16
Wyoming	—	0	0	—	—	—	0	0	—	—	—	0	2	1	1
Pacific	—	0	0	—	—	—	0	0	—	—	15	86	110	1,334	1,474
Alaska	—	0	0	—	—	—	0	0	—	—	—	0	1	—	7
California	—	0	0	—	—	—	0	0	—	—	9	73	94	1,163	1,230
Hawaii	—	0	0	—	—	—	0	0	—	—	1	1	4	15	24
Oregon	—	0	0	—	—	—	0	0	—	—	—	5	10	95	98
Washington	—	0	0	—	—	—	0	0	—	—	5	6	16	61	115
Territories															
American Samoa	—	—	—	—	—	—	—	—	—	—	—	—	—	—	—
C.N.M.I.	—	—	—	—	—	—	—	—	—	—	—	—	—	—	—
Guam	—	—	—	—	—	—	—	—	—	—	—	—	—	—	—
Puerto Rico	—	0	0	—	—	—	0	0	—	—	—	8	31	128	109
U.S. Virgin Islands	—	0	0	—	—	—	0	0	—	—	—	0	1	—	—

C.N.M.I.: Commonwealth of Northern Mariana Islands.

U: Unavailable. —: No reported cases. N: Not reportable. NN: Not Nationally Notifiable. NP: Nationally notifiable but not published. Cum: Cumulative year-to-date counts. Med: Median. Max: Maximum.

* Three low incidence conditions, rubella, rubella congenital, and tetanus, have been moved to Table II to facilitate case count verification with reporting jurisdictions.

[†] Case counts for reporting year 2014 and 2015 are provisional and subject to change. For further information on interpretation of these data, see <http://www.cdc.gov/nndss/document/ProvisionalNationalNotifiableDiseasesSurveillanceData20100927.pdf>. Data for TB are displayed in Table IV, which appears quarterly.

[§] Illnesses with similar clinical presentation that result from Spotted fever group rickettsia infections are reported as Spotted fever rickettsioses. Rocky Mountain spotted fever (RMSF) caused by *Rickettsia rickettsii*, is the most common and well-known spotted fever.

Morbidity and Mortality Weekly Report

TABLE II. (Continued) Provisional cases of selected notifiable diseases (≥1,000 cases reported during the preceding year), and selected* low frequency diseases, United States, weeks ending May 9, 2015, and May 3, 2014 (18th week)[†] (Export data)

Reporting area	Tetanus					Varicella (chickenpox)					Vibriosis [§]				
	Current week	Previous 52 weeks		Cum 2015	Cum 2014	Current week	Previous 52 weeks		Cum 2015	Cum 2014	Current week	Previous 52 weeks		Cum 2015	Cum 2014
		Med	Max				Med	Max				Med	Max		
United States	—	0	2	5	7	102	173	273	2,858	3,280	8	18	81	155	115
New England	—	0	1	1	—	4	21	41	272	323	—	1	7	8	6
Connecticut	—	0	0	—	—	1	4	9	50	56	—	0	2	4	1
Maine	—	0	0	—	—	—	4	12	79	51	—	0	2	—	1
Massachusetts	—	0	0	—	—	—	8	21	107	120	—	1	6	4	4
New Hampshire	—	0	1	1	—	—	1	5	—	34	—	0	1	—	—
Rhode Island	—	0	0	—	—	2	0	8	20	16	—	0	2	—	—
Vermont	—	0	0	—	—	1	1	8	16	46	—	0	0	—	—
Mid. Atlantic	—	0	1	—	—	9	20	37	286	398	—	1	10	7	9
New Jersey	—	0	0	—	—	—	5	15	63	110	—	0	5	—	4
New York (Upstate)	—	0	0	—	—	N	0	0	N	N	—	1	5	4	3
New York City	—	0	0	—	—	—	0	0	—	—	—	0	3	2	1
Pennsylvania	—	0	1	—	—	9	15	29	223	288	—	0	3	1	1
E.N. Central	—	0	1	1	1	10	38	67	575	907	—	1	7	10	5
Illinois	—	0	1	1	—	—	9	21	133	210	—	0	3	3	1
Indiana	—	0	0	—	1	1	4	11	61	77	—	0	1	—	—
Michigan	—	0	0	—	—	—	9	33	98	282	—	0	3	6	1
Ohio	—	0	1	—	—	7	10	18	166	187	—	0	4	1	1
Wisconsin	—	0	1	—	—	2	7	17	117	151	—	0	2	—	2
W.N. Central	—	0	1	1	1	3	10	23	161	170	—	0	3	—	1
Iowa	—	0	0	—	—	N	0	0	N	N	—	0	0	—	—
Kansas	—	0	0	—	—	—	0	0	—	—	—	0	1	—	—
Minnesota	—	0	1	—	1	—	5	13	95	90	—	0	0	—	—
Missouri	—	0	0	—	—	—	3	12	44	56	—	0	2	—	1
Nebraska	—	0	0	—	—	—	0	2	4	6	—	0	1	—	—
North Dakota	—	0	0	—	—	—	0	3	4	7	—	0	1	—	—
South Dakota	—	0	1	1	—	3	0	3	14	11	—	0	0	—	—
S. Atlantic	—	0	1	2	2	18	25	55	511	419	6	6	18	56	45
Delaware	—	0	0	—	—	—	0	2	6	1	—	0	1	—	—
District of Columbia	—	0	0	—	—	—	0	0	—	—	—	0	1	—	—
Florida	—	0	1	1	2	18	10	37	296	226	6	3	10	42	27
Georgia	—	0	0	—	—	—	1	7	17	14	—	0	1	3	3
Maryland	—	0	1	—	—	N	0	0	N	N	—	0	4	1	3
North Carolina	—	0	0	—	—	N	0	0	N	N	—	0	5	6	5
South Carolina	—	0	1	1	—	—	3	11	54	42	—	0	2	—	3
Virginia	—	0	0	—	—	—	6	21	112	83	—	0	8	3	3
West Virginia	—	0	0	—	—	—	2	9	26	53	—	0	1	1	1
E.S. Central	—	0	1	—	—	—	2	10	78	41	1	1	5	5	4
Alabama	—	0	0	—	—	—	2	9	69	41	—	0	3	2	1
Kentucky	—	0	0	—	—	N	0	0	N	N	—	0	1	—	—
Mississippi	—	0	1	—	—	—	0	3	9	—	1	0	2	2	1
Tennessee	—	0	0	—	—	N	0	0	N	N	—	0	2	1	2
W.S. Central	—	0	1	—	2	50	36	83	596	509	—	2	8	12	12
Arkansas	—	0	0	—	—	1	3	29	44	35	—	0	0	—	—
Louisiana	—	0	1	—	—	3	1	3	25	13	—	1	4	12	10
Oklahoma	—	0	1	—	—	N	0	0	N	N	—	0	1	—	—
Texas	—	0	1	—	2	46	32	80	527	461	—	1	5	—	2
Mountain	—	0	0	—	—	8	18	33	327	464	—	1	5	13	5
Arizona	—	0	0	—	—	7	4	10	98	147	—	1	4	11	2
Colorado	—	0	0	—	—	—	6	27	95	155	—	0	3	1	2
Idaho	—	0	0	—	—	N	0	0	N	N	—	0	0	—	—
Montana	—	0	0	—	—	1	1	16	66	33	—	0	1	—	—
Nevada	—	0	0	—	—	N	0	0	N	N	—	0	1	—	1
New Mexico	—	0	0	—	—	—	1	4	13	37	—	0	1	—	—
Utah	—	0	0	—	—	—	3	12	55	91	—	0	1	1	—
Wyoming	—	0	0	—	—	—	0	2	—	1	—	0	1	—	—
Pacific	—	0	2	—	1	—	3	9	52	49	1	5	39	44	28
Alaska	—	0	1	—	—	—	1	4	19	9	—	0	2	—	1
California	—	0	1	—	1	—	0	3	12	22	—	3	32	31	16
Hawaii	—	0	0	—	—	—	1	7	21	18	1	0	4	8	10
Oregon	—	0	0	—	—	N	0	0	N	N	—	0	2	3	1
Washington	—	0	1	—	—	N	0	0	N	N	—	0	13	2	—
Territories															
American Samoa	—	—	—	—	—	N	—	—	N	N	—	—	—	—	—
C.N.M.I.	—	—	—	—	—	—	—	—	—	—	—	—	—	—	—
Guam	—	—	—	—	—	—	—	—	—	—	—	—	—	—	—
Puerto Rico	—	0	1	1	—	—	3	12	21	80	—	0	0	—	—
U.S. Virgin Islands	—	0	0	—	—	—	0	0	—	—	—	0	0	—	—

C.N.M.I.: Commonwealth of Northern Mariana Islands.

U: Unavailable. —: No reported cases. N: Not reportable. NN: Not Nationally Notifiable. NP: Nationally notifiable but not published. Cum: Cumulative year-to-date counts. Med: Median. Max: Maximum.

* Three low incidence conditions, rubella, rubella congenital, and tetanus, have been moved to Table II to facilitate case count verification with reporting jurisdictions.

† Case counts for reporting year 2014 and 2015 are provisional and subject to change. For further information on interpretation of these data, see <http://www.cdc.gov/nndss/document/ProvisionalNationalNotifiableDiseasesSurveillanceData20100927.pdf>. Data for TB are displayed in Table IV, which appears quarterly.

§ Any species of the family Vibrionaceae, other than toxigenic *Vibrio cholerae* O1 or O139.

Morbidity and Mortality Weekly Report

TABLE II. (Continued) Provisional cases of selected notifiable diseases (≥1,000 cases reported during the preceding year), and selected* low frequency diseases, United States, weeks ending May 9, 2015, and May 3, 2014 (18th week)[†] (Export data)

Reporting area	West Nile virus disease [§]									
	Neuroinvasive					Nonneuroinvasive [¶]				
	Current week	Previous 52 weeks		Cum 2015	Cum 2014	Current week	Previous 52 weeks		Cum 2015	Cum 2014
	Med	Max				Med	Max			
United States	—	2	135	—	2	—	1	105	—	1
New England	—	0	2	—	—	—	0	2	—	—
Connecticut	—	0	2	—	—	—	0	2	—	—
Maine	—	0	0	—	—	—	0	0	—	—
Massachusetts	—	0	1	—	—	—	0	1	—	—
New Hampshire	—	0	0	—	—	—	0	0	—	—
Rhode Island	—	0	0	—	—	—	0	0	—	—
Vermont	—	0	0	—	—	—	0	0	—	—
Mid. Atlantic	—	0	8	—	—	—	0	5	—	—
New Jersey	—	0	1	—	—	—	0	1	—	—
New York (Upstate)	—	0	0	—	—	—	0	2	—	—
New York City	—	0	4	—	—	—	0	2	—	—
Pennsylvania	—	0	4	—	—	—	0	1	—	—
E.N. Central	—	0	11	—	—	—	0	3	—	—
Illinois	—	0	10	—	—	—	0	3	—	—
Indiana	—	0	3	—	—	—	0	1	—	—
Michigan	—	0	1	—	—	—	0	0	—	—
Ohio	—	0	4	—	—	—	0	1	—	—
Wisconsin	—	0	1	—	—	—	0	2	—	—
W.N. Central	—	0	16	—	—	—	0	32	—	1
Iowa	—	0	3	—	—	—	0	2	—	1
Kansas	—	0	4	—	—	—	0	8	—	—
Minnesota	—	0	2	—	—	—	0	3	—	—
Missouri	—	0	2	—	—	—	0	1	—	—
Nebraska	—	0	10	—	—	—	0	19	—	—
North Dakota	—	0	3	—	—	—	0	3	—	—
South Dakota	—	0	3	—	—	—	0	11	—	—
S. Atlantic	—	0	6	—	—	—	0	3	—	—
Delaware	—	0	0	—	—	—	0	0	—	—
District of Columbia	—	0	1	—	—	—	0	1	—	—
Florida	—	0	2	—	—	—	0	2	—	—
Georgia	—	0	2	—	—	—	0	1	—	—
Maryland	—	0	2	—	—	—	0	0	—	—
North Carolina	—	0	0	—	—	—	0	0	—	—
South Carolina	—	0	1	—	—	—	0	0	—	—
Virginia	—	0	1	—	—	—	0	1	—	—
West Virginia	—	0	0	—	—	—	0	0	—	—
E.S. Central	—	0	5	—	—	—	0	3	—	—
Alabama	—	0	0	—	—	—	0	1	—	—
Kentucky	—	0	0	—	—	—	0	1	—	—
Mississippi	—	0	5	—	—	—	0	2	—	—
Tennessee	—	0	2	—	—	—	0	1	—	—
W.S. Central	—	0	38	—	1	—	0	32	—	—
Arkansas	—	0	1	—	—	—	0	1	—	—
Louisiana	—	0	8	—	—	—	0	11	—	—
Oklahoma	—	0	2	—	—	—	0	3	—	—
Texas	—	0	30	—	1	—	0	21	—	—
Mountain	—	0	22	—	—	—	0	22	—	—
Arizona	—	0	8	—	—	—	0	5	—	—
Colorado	—	0	11	—	—	—	0	17	—	—
Idaho	—	0	1	—	—	—	0	4	—	—
Montana	—	0	0	—	—	—	0	0	—	—
Nevada	—	0	1	—	—	—	0	0	—	—
New Mexico	—	0	5	—	—	—	0	4	—	—
Utah	—	0	0	—	—	—	0	1	—	—
Wyoming	—	0	0	—	—	—	0	2	—	—
Pacific	—	0	56	—	1	—	0	27	—	—
Alaska	—	0	0	—	—	—	0	0	—	—
California	—	0	56	—	1	—	0	26	—	—
Hawaii	—	0	0	—	—	—	0	1	—	—
Oregon	—	0	0	—	—	—	0	1	—	—
Washington	—	0	1	—	—	—	0	2	—	—
Territories										
American Samoa	—	—	—	—	—	—	—	—	—	—
C.N.M.I.	—	—	—	—	—	—	—	—	—	—
Guam	—	—	—	—	—	—	—	—	—	—
Puerto Rico	—	0	0	—	—	—	0	0	—	—
U.S. Virgin Islands	—	0	0	—	—	—	0	0	—	—

C.N.M.I.: Commonwealth of Northern Mariana Islands.

U: Unavailable. —: No reported cases. N: Not reportable. NN: Not Nationally Notifiable. NP: Nationally notifiable but not published. Cum: Cumulative year-to-date counts. Med: Median. Max: Maximum.

* Three low incidence conditions, rubella, rubella congenital, and tetanus, have been moved to Table II to facilitate case count verification with reporting jurisdictions.

[†] Case counts for reporting year 2014 and 2015 are provisional and subject to change. For further information on interpretation of these data, see <http://www.cdc.gov/nndss/document/ProvisionalNationalNotifiableDiseasesSurveillanceData20100927.pdf>. Data for TB are displayed in Table IV, which appears quarterly.

[§] Updated weekly from reports to the Division of Vector-Borne Diseases, National Center for Emerging and Zoonotic Infectious Diseases (ArboNET Surveillance). Data for California serogroup, Chikungunya virus, eastern equine, Powassan, St. Louis, and western equine diseases are available in Table I.

[¶] Not reportable in all states. Data from states where the condition is not reportable are excluded from this table, except starting in 2007 for the domestic arboviral diseases and influenza-associated pediatric mortality, and in 2003 for SARS-CoV. Reporting exceptions are available at http://www.cdc.gov/nndss/document/SRCA_FINAL_REPORT_2006-2012_final.xlsx.

Morbidity and Mortality Weekly Report

TABLE III. Deaths in 122 U.S. cities,* week ending May 9, 2015 (18th week) (Export data)

Reporting area	All causes, by age (years)						P&I†	Total	Reporting area (Continued)	All causes, by age (years)						P&I†	Total
	All Ages	≥65	45-64	25-44	1-24	<1				All Ages	≥65	45-64	25-44	1-24	<1		
New England	579	420	115	22	11	11	49	S. Atlantic	976	639	250	47	24	15	52		
Boston, MA	157	107	38	4	3	5	13	Atlanta, GA	156	80	56	10	9	1	9		
Bridgeport, CT	36	27	7	1	1	—	2	Baltimore, MD	—	—	—	—	—	—	—		
Cambridge, MA	13	12	1	—	—	—	2	Charlotte, NC	133	91	35	5	—	2	—		
Fall River, MA	28	21	4	3	—	—	4	Jacksonville, FL	146	94	33	11	4	4	9		
Hartford, CT	57	38	12	4	2	1	8	Miami, FL	68	52	11	3	2	—	4		
Lowell, MA	23	18	4	1	—	—	1	Norfolk, VA	29	17	10	—	—	2	1		
Lynn, MA	8	7	1	—	—	—	1	Richmond, VA	47	32	9	3	2	—	—		
New Bedford, MA	26	21	3	1	1	—	2	Savannah, GA	86	65	19	1	1	—	7		
New Haven, CT	26	20	5	—	1	—	—	St. Petersburg, FL	62	40	17	1	1	3	4		
Providence, RI	47	42	4	1	—	—	4	Tampa, FL	140	96	32	8	2	2	6		
Somerville, MA	6	4	1	—	1	—	—	Washington, D.C.	93	58	26	5	3	1	10		
Springfield, MA	56	39	12	3	1	1	—	Wilmington, DE	16	14	2	—	—	—	2		
Waterbury, CT	24	16	5	1	1	1	—	E.S. Central	1,102	745	242	76	23	16	66		
Worcester, MA	72	48	18	3	—	3	12	Birmingham, AL	217	152	45	11	7	2	15		
Mid. Atlantic	1,637	1,190	314	88	26	19	81	Chattanooga, TN	97	64	23	7	1	2	6		
Albany, NY	46	35	7	2	2	—	2	Knoxville, TN	133	99	25	6	1	2	9		
Allentown, PA	44	31	12	1	—	—	2	Lexington, KY	142	96	33	9	4	—	4		
Buffalo, NY	68	51	13	2	1	1	6	Memphis, TN	180	117	42	15	4	2	15		
Camden, NJ	27	17	7	3	—	—	1	Mobile, AL	126	80	26	12	2	6	8		
Elizabeth, NJ	16	10	4	2	—	—	1	Montgomery, AL	57	43	8	4	2	—	1		
Erie, PA	56	43	11	2	—	—	4	Nashville, TN	150	94	40	12	2	2	8		
Jersey City, NJ	17	13	4	—	—	—	2	W.S. Central	1,472	956	342	100	39	35	109		
New York City, NY	973	706	187	56	11	13	41	Austin, TX	106	68	19	11	2	6	11		
Newark, NJ	35	9	9	11	4	2	1	Baton Rouge, LA	120	76	33	6	1	4	9		
Paterson, NJ	15	9	3	2	1	—	1	Corpus Christi, TX	74	44	18	9	—	3	3		
Philadelphia, PA	U	U	U	U	U	U	U	Dallas, TX	196	125	45	15	7	4	17		
Pittsburgh, PA [§]	36	27	9	—	—	—	2	El Paso, TX	83	50	23	4	6	—	—		
Reading, PA	35	30	4	1	—	—	4	Fort Worth, TX	U	U	U	U	U	U	U		
Rochester, NY	145	114	20	6	3	2	5	Houston, TX	217	151	44	11	5	6	11		
Schenectady, NY	21	16	5	—	—	—	—	Little Rock, AR	126	77	33	10	3	3	17		
Scranton, PA	17	13	3	—	1	—	1	New Orleans, LA	87	52	21	10	4	—	1		
Syracuse, NY	55	42	10	—	2	1	6	San Antonio, TX	267	187	57	12	5	6	18		
Trenton, NJ	U	U	U	U	U	U	U	Shreveport, LA	74	52	14	4	2	2	4		
Utica, NY	13	8	5	—	—	—	2	Tulsa, OK	122	74	35	8	4	1	18		
Yonkers, NY	18	16	1	—	1	—	—	Mountain	1,226	818	279	85	29	15	75		
E.N. Central	2,127	1,396	494	138	50	49	143	Albuquerque, NM	121	86	24	8	2	1	6		
Akron, OH	63	45	13	2	1	2	5	Boise, ID	63	47	9	6	1	—	5		
Canton, OH	37	23	10	4	—	—	2	Colorado Springs, CO	90	68	13	5	3	1	2		
Chicago, IL	273	173	64	23	10	3	16	Denver, CO	78	53	19	5	1	—	2		
Cincinnati, OH	65	41	14	5	1	4	5	Las Vegas, NV	318	209	81	22	3	3	28		
Cleveland, OH	291	199	68	12	6	6	25	Ogden, UT	26	15	10	—	1	—	—		
Columbus, OH	252	158	54	20	7	13	12	Phoenix, AZ	176	99	49	12	11	5	7		
Dayton, OH	124	91	23	6	1	3	14	Pueblo, CO	33	24	4	5	—	—	—		
Detroit, MI	178	95	45	24	9	5	11	Salt Lake City, UT	148	101	30	12	3	2	13		
Evansville, IN	48	34	10	3	1	—	3	Tucson, AZ	173	116	40	10	4	3	12		
Fort Wayne, IN	78	54	19	2	1	2	4	Pacific	1,758	1,229	360	88	46	35	133		
Gary, IN	14	8	1	2	3	—	—	Berkeley, CA	12	11	1	—	—	—	—		
Grand Rapids, MI	84	62	15	3	1	3	9	Fresno, CA	134	89	33	7	2	3	9		
Indianapolis, IN	189	117	56	9	3	4	16	Glendale, CA	31	23	5	1	2	—	4		
Lansing, MI	32	23	7	2	—	—	2	Honolulu, HI	82	64	15	2	—	1	8		
Milwaukee, WI	91	54	26	6	3	2	7	Long Beach, CA	59	35	18	1	5	—	3		
Peoria, IL	52	35	13	4	—	—	3	Los Angeles, CA	264	170	59	14	14	7	21		
Rockford, IL	61	43	12	4	1	1	2	Pasadena, CA	22	19	3	—	—	—	3		
South Bend, IN	44	31	12	1	—	—	3	Portland, OR	125	91	25	5	2	2	8		
Toledo, OH	91	64	20	5	2	—	3	Sacramento, CA	218	157	43	11	4	3	22		
Youngstown, OH	60	46	12	1	—	1	1	San Diego, CA	166	113	30	10	2	11	9		
W.N. Central	558	368	123	34	15	17	40	San Francisco, CA	131	88	27	12	3	1	10		
Des Moines, IA	—	—	—	—	—	—	—	San Jose, CA	202	145	41	7	4	5	12		
Duluth, MN	30	20	9	1	—	—	—	Santa Cruz, CA	27	21	3	3	—	—	2		
Kansas City, KS	29	14	10	4	1	—	2	Seattle, WA	83	56	16	5	4	2	4		
Kansas City, MO	87	58	18	4	4	2	5	Spokane, WA	69	54	11	3	1	—	5		
Lincoln, NE	55	48	4	3	—	—	2	Tacoma, WA	133	93	30	7	3	—	13		
Minneapolis, MN	61	40	13	3	—	5	3	Total¶	11,435	7,761	2,519	678	263	212	748		
Omaha, NE	94	66	16	6	3	3	10										
St. Louis, MO	60	27	19	7	3	4	4										
St. Paul, MN	59	34	18	2	4	1	5										
Wichita, KS	83	61	16	4	—	2	9										

U: Unavailable. —: No reported cases.

* Mortality data in this table are voluntarily reported from 122 cities in the United States, most of which have populations of >100,000. A death is reported by the place of its occurrence and by the week that the death certificate was filed. Fetal deaths are not included.

† Pneumonia and influenza.

§ Because of changes in reporting methods in this Pennsylvania city, these numbers are partial counts for the current week. Complete counts will be available in 4 to 6 weeks.

¶ Total includes unknown ages.