

Surveillance for Cancer Incidence and Mortality — United States, 2012

Simple D. Singh, MD¹
S. Jane Henley, MSPH¹
A. Blythe Ryerson, PhD¹

¹Division of Cancer Prevention and Control, National Center for Chronic Disease Prevention and Health Promotion, CDC

Preface

This report provides, in tabular and graphic form, official federal statistics on the occurrence of cancer for 2012 and trends for 1999–2012 as reported by CDC and the National Cancer Institute (NCI) (1). Cancer incidence data are from population-based cancer registries that participate in CDC's National Program of Cancer Registries (NPCR) and NCI's Surveillance, Epidemiology, and End Results (SEER) program reported as of November 2014. Cancer mortality data are from death certificate information reported to state vital statistics offices through 2012 and compiled into a national file for the entire United States by CDC's National Center for Health Statistics' (NCHS) National Vital Statistics System (NVSS). This report is a part of the *Summary of Notifiable Noninfectious Conditions and Disease Outbreaks — United States*, which encompasses various surveillance years but is being published in 2016 (2). The *Summary of Notifiable Noninfectious Conditions and Disease Outbreaks* appears in the same volume of *MMWR* as the annual *Summary of Notifiable Infectious Diseases* (3).

This report presents information on new cancer cases and deaths for 2012. The number and rate of cancer cases and deaths are stratified by the primary cancer sites as reported for 2012; information is provided by demographic characteristic (e.g., sex, age, race, and ethnicity) and primary cancer site (68 selected sites among men and 72 selected sites among women). Age-adjusted cancer incidence and death rates are shown by primary site and year for the period 1999–2012. Age-adjusted cancer incidence and death rates for the most common sites are shown by race, sex, and ethnicity for 2012, the most recent year for which incidence data are available. Maps of the United States display age-adjusted cancer incidence and death rates, presented by quartiles, for 2012. Time trends in age-adjusted cancer incidence and death rates during 1999–2012 are shown by race, sex, and ethnicity for all sites combined, colorectal, lung and bronchus, prostate, and female breast.

Background

Cancer comprises a diverse mix of diseases occurring in every part of the body and is a leading cause of death in the United States (4). More than half of cancer cases could be prevented (5). Surveillance of cancer incidence and mortality can help public health officials target areas for control efforts (6) and track progress toward meeting the national health objectives set forth in *Healthy People 2020* (7). Cancer is a reportable disease in every state and thus all hospitals, physicians' offices, pathology laboratories, and other medical facilities are required to submit data on all reportable cancer diagnoses to a central cancer registry at the state or territorial level. A cancer registry is a database that contains individual records of all reportable cancer cases in a defined population and includes patient demographics, tumor characteristics (e.g., cancer site and pathology), and information about the notifying health provider or facility. In 1992, Congress established NPCR by enacting the Cancer Registries Amendment Act (Public Law 102-515) (8). Administered by CDC, NPCR collects data on the occurrence of cancer and the type, extent, and location of the cancer. Before NPCR was established, 10 states had no registry, and most states with registries lacked the resources and state legislation needed to gather complete data (9). Presently, NPCR supports central cancer registries in 45 states, the District of Columbia (DC), Puerto Rico, and the U.S. Pacific Island Jurisdictions. NPCR data represent 96% of the overall U.S. population. Together, NPCR and NCI's SEER Program collect data for the entire U.S. population. Cancer control planners and others can identify variations in cancer rates by population subgroups and monitor trends over time to guide the planning and evaluation of cancer prevention and control programs and allocation of health resources.

Data Sources

Data about cancer incidence and mortality in the *Summary of Notifiable Noninfectious Conditions and Disease Outbreaks* come from the official federal statistics on cancer, the U.S. Cancer Statistics (USCS) dataset (1). The USCS dataset includes cancer incidence data from NPCR registries in 45 states and

Corresponding author: Simple Singh, Division of Cancer Prevention and Control, National Center for Chronic Disease Prevention and Health Promotion, CDC. Telephone: 770-488-4292; E-mail: sdsingh@cdc.gov.

DC (cancer incidence data from Puerto Rico and the U.S. Pacific Island Jurisdictions were not available for this analysis) and from SEER program registries in the remaining five states (Connecticut, Hawaii, Iowa, New Mexico, and Utah) and cancer mortality data from NVSS.

Incidence Data

The primary source of data on cancer incidence is medical records. Staff at health care facilities abstract data from patients' medical records, enter it into the facility's own cancer registry if it has one, and then send the data to the regional or state registry. Both NPCR and SEER registries collect data using uniform data items and codes as documented by the North American Association of Central Cancer Registries (NAACCR). This uniformity ensures that data items collected by the two federal programs are comparable (10,11). Information on primary site and histology is coded according to the International Classification of Diseases for Oncology, Third Edition (ICD-O-3) and categorized according to the revised SEER recodes dated January 27, 2003, which define standard groupings of primary cancer sites (<http://seer.cancer.gov/siterecode>) (12). Beginning with 2010 diagnoses, cases were first classified by anatomic site using ICD-O-3; cases with hematopoietic histologies were further classified by using the 2008 WHO Classification of Tumours of Haematopoietic and Lymphoid Tissues (13). Data from the NPCR registries provided in this report were reported to CDC as of November 30, 2014. Data from SEER registries were reported to NCI as of November 1, 2014.

NPCR and SEER cancer registries consider as reportable all incident cases with a behavior code of 2 (in situ, noninvasive) or 3 (malignant, primary site only) in ICD-O-3. Exceptions include in situ cancer of the cervix and all basal and squamous cell carcinomas of the skin, except for those on the skin of the genital organs (12). Beginning with 2001 diagnoses, several cancers that are coded as malignant in ICD-O-3 were not coded as malignant in ICD-O-2 (10). Additional information is provided in the USCS technical notes (<http://www.cdc.gov/cancer/npcr/uscs/pdf/uscs-2012-technical-notes.pdf#nameddest=IncidenceDataSources>).

Mortality Data

Cancer mortality statistics are based on information from all death certificates filed in the 50 states and DC and processed by NVSS at NCHS (14). The cancer mortality data were compiled in accordance with World Health Organization regulations, which specify that member nations classify and code causes of death in accordance with the current revision of the International Classification of Diseases (ICD) (15). For

consistency with the data on cancer incidence, the cancer sites in mortality data were grouped according to the revised SEER recodes dated January 27, 2003 (available at <http://seer.cancer.gov/codrecode>). Data for a specific calendar year are based on records of deaths that occurred during that calendar year and received by a particular date; for example, mortality data for 2012 are based on records of deaths that occurred during 2012 and were received as of June 30, 2014. Additional information is provided in the USCS technical notes (<http://www.cdc.gov/cancer/npcr/uscs/pdf/uscs-2012-technical-notes.pdf#nameddest=MortalityDataSources>).

Population Estimates

Population denominators are race-specific, ethnicity-specific, and sex-specific county population estimates from the U.S. Census, modified by SEER and aggregated to the state and national level. Additional details about population data are available at <http://seer.cancer.gov/popdata/index.html>.

Interpreting Data

Incidence Data

Each year, state cancer registries submit cancer cases for a new diagnosis year and an updated version of the previous years' cancer cases to CDC or NCI. Therefore, each year, when USCS data are published, updates to the previous year's data are published, using the most recent data submission and the most recent population data. Users of cancer incidence data published by federal agencies should be mindful of the data submission dates for all data used in their analyses.

Mortality Data

Cancer mortality statistics in USCS are influenced by the accuracy of information on the death certificate. Unlike incidence data, mortality data for a calendar year are considered complete when submitted and so are not updated after the aggregate data file is released. Mortality data for the entire United States refer only to deaths that occurred within the United States; data for geographic areas are provided by the decedent's place of residence.

Race and Ethnicity Data

For cancer incidence, race and ethnicity data are abstracted from medical records and grouped into categories (11). When cancer mortality is reported, race and ethnic origin are recorded separately on the death certificate by the funeral director as

provided by an informant or, in the absence of an informant, on the basis of observation (16).

Differences in rates among racial and ethnic populations should be interpreted with caution. A study using SEER incidence data suggests that the quality of data on race in cancer registries is considered excellent for whites, blacks, and Asians/Pacific Islanders, good for Hispanics, and poor for American Indians/Alaska Natives (17). Previous studies involving cancer mortality data demonstrate that death rates for whites and blacks generally are estimated accurately whereas death rates for Asians/Pacific Islanders, American Indians/Alaska Natives, and Hispanics are underestimated (18). For this reason, incidence and mortality data provided in this report might be underestimated for these groups, possibly because of misclassification of race or Hispanic ethnicity.

Three NPCR registries (Delaware, Kentucky, and South Carolina) opted not to present state-specific Asian/Pacific Islander counts and rates. Five NPCR registries (Delaware, Kentucky, Massachusetts, Pennsylvania, and South Carolina) opted not to present state-specific Hispanic (classified by the NAACCR Hispanic Identification [NHIA] Algorithm) counts and rates (19). Cancer registries regularly link their database to the Indian Health Service patient registration dataset to reduce misclassification of race for American Indian/Alaska Native cases. Seven NPCR registries (Delaware, Illinois, Kansas, Kentucky, New Jersey, New York, and South Carolina) opted not to present state-specific American Indian/Alaska Native counts and rates. However, in each of these cases, the aggregate national rates presented in this report include data for these registries.

Methods for Identifying Cancer

Medical facilities such as hospitals, doctors' offices, and pathology laboratories send information about cancer cases to their cancer registry. Most information comes from hospitals, where highly trained cancer registrars transfer the information from the patient's medical record to the registry's computer software using standardized codes. The data are then sent to the central cancer registry. Every year the central cancer registries electronically submit incidence, demographic, and clinical data to NPCR or SEER.

Population Coverage

The population coverage for incidence data varies by diagnosis year. Population coverage might be affected by the suppression of state incidence data, if a state did not meet the publication criteria or did not submit data. In addition, state incidence data might be suppressed if <16 cases were reported or if the state requested that the data be suppressed. Additional

information is provided by the USCS technical notes (<http://www.cdc.gov/cancer/npcr/uscs/pdf/uscs-2012-technical-notes.pdf#nameddest=CensusRegionPubCriteria>). Mortality data from malignant neoplasms (i.e., cancers) as recorded in the NVSS from the 50 states and DC are available in USCS, and thus 100% of the U.S. population is covered each year. However, state death data might be suppressed if <16 deaths were reported.

Suppression of Rates and Counts

When the numbers of cases or deaths used to compute rates are small, those rates tend to have poor reliability. Therefore, in an effort to discourage misinterpretation or use of rates or counts that are unstable because case or death counts are small, incidence and death rates and counts of <16 are not shown in tables and figures. The use of a threshold value for suppressing cells helps protect the confidentiality of patients by reducing or eliminating the risk for disclosure of their identity. Additional information is provided in the USCS technical notes (<http://www.cdc.gov/cancer/npcr/uscs/pdf/uscs-2012-technical-notes.pdf#nameddest=Suppression>).

Publication Criteria

Cancer incidence data that appear in this report are derived from state cancer registries that have high-quality cancer incidence data for individual (e.g., 2012) and combined (e.g., 1999–2012) years as demonstrated by meeting all of the following criteria on data quality for all cancer sites combined:

- case ascertainment is $\geq 90\%$ (margin of error +5%) complete,
- $\leq 5\%$ of cases are ascertained solely on the basis of a death certificate,
- $\leq 3\%$ of cases are missing information on sex,
- $\leq 3\%$ of cases are missing information on age,
- $\leq 5\%$ of cases are missing information on race, and
- $\geq 97\%$ of the registry's records passed a set of single-field and inter-field computerized edits that test the validity and logic of data components.

Additional information about USCS is available at <http://www.cdc.gov/uscs>.

Highlights

Incidence and Death Rates

In 2012, approximately 1.5 million invasive cancers were diagnosed in the United States, an annual incidence rate of 440 cases per 100,000 persons (Table 1). In the same year,

approximately 582,600 persons died of cancer nationally, an annual death rate of 166 deaths per 100,000 persons (Table 2). By state, overall (all cancer sites combined) cancer incidence rates in 2012 ranged from 371 to 515 cases per 100,000 persons (Table 3), and overall cancer death rates ranged from 129 to 201 deaths per 100,000 persons (Table 4).

Cancer incidence (Table 5) and death (Table 6) rates increase with age. In 2012, among persons in the youngest age group (<15 years), 9,967 new cancer cases (rate: 17 cases per 100,000 persons) and 1,367 cancer deaths (rate: two deaths per 100,000 persons) were reported. Among persons aged ≥ 65 years, 826,841 new cancer cases (rate: 1,933 cases per 100,000 persons) and 403,497 cancer deaths (rate: 935 deaths per 100,000 persons) were reported. Overall, 54% of cancer cases and 69% of cancer deaths in 2012 occurred among persons aged ≥ 65 years.

Overall and for many cancer sites, males had higher incidence (Table 7) and death rates (Table 8) than did females. In 2012, blacks had the highest cancer incidence (Table 9) and death (Table 10) rates in the United States, and American Indians/Alaska Natives and Asians/Pacific Islanders had the lowest cancer incidence and death rates. Overall and for most cancer sites, Hispanics had lower cancer incidence (Table 11) and death rates (Table 12) than did non-Hispanics. Differences in cancer rates by race and ethnicity (Figure 1) might reflect differences in risk factors, screening, and treatment although rates among some populations might be underestimated because of problems ascertaining race or ethnicity.

By state and site, cancer incidence rates in 2012 ranged from 70 to 157 per 100,000 males for prostate cancer, 107 to 141 per 100,000 females for breast cancer, 4 to 10 per 100,000 females for cervical cancer, 29 to 92 per 100,000 persons for lung cancer, and 30 to 49 per 100,000 persons for colorectal cancer (Figure 2). By state and site, cancer death rates in 2012 ranged from 13 to 32 per 100,000 males for prostate cancer, 16 to 31 per 100,000 females for breast cancer, 1 to 5 per 100,000 females for cervical cancer, 20 to 69 per 100,000 persons for lung cancer, and 11 to 19 per 100,000 persons for colorectal cancer (Figure 3).

Differing rates of cancer by race, ethnicity, and state of residence indicate that for some populations, *Healthy People 2020* objectives have already been achieved, whereas objectives for other populations have not been met and these populations might benefit from targeted cancer prevention and control efforts.

Four cancer sites accounted for 49% of all cases diagnosed in 2012, including 224,147 female breast cancers, 210,828 lung and bronchus cancers (111,395 among men and 99,433 among women), 177,489 prostate cancers, and 134,784 colon and rectum cancers (70,204 among men and 64,580 among

women) (Table 13). These four sites also accounted for 48% of cancer deaths in 2012, including 157,423 lung cancer deaths, 51,516 colon and rectum cancer deaths, 41,150 female breast cancer deaths, and 27,244 prostate cancer deaths (Table 14).

Time Trends in Incidence and Death Rates

On the basis of data from registries meeting data quality criteria during 1999–2012, cancer incidence rates declined from 484 cancer cases per 100,000 population in 1999 to 434 cases in 2012 (Table 15). Although lung cancer incidence declined steadily among men from 1999 to 2012, it increased among women from 1999 to 2005 and has since declined from 2005 to 2012. Prostate cancer incidence declined from 170 cases per 100,000 men in 1999 to 105 cases in 2012. Colorectal cancer incidence declined from 56 cases per 100,000 persons in 1999 to 39 cases in 2012. Female breast cancer incidence declined from 135 cases per 100,000 women in 1999 to 121 cases in 2005, increased to 125 cases in 2009, and declined again to 122 cases in 2012. Time trends in cancer incidence rates are presented by cancer site, sex, and race (Figure 4) and by cancer site, sex, and ethnicity (Figure 5). During 1999–2012, cancer death rates declined from 201 deaths per 100,000 persons in 1999 to 166 deaths in 2012; during the same period, death rates declined for each of the four most common cancers (Table 16). Time trends in cancer death rates are presented by cancer site, sex, and race (Figure 6) and by cancer site, sex, and ethnicity (Figure 7).

National cancer surveillance data help public health officials track progress toward achieving the national cancer objectives set forth in *Healthy People 2020* (20). For the national cancer burden to be reduced and *Healthy People 2020* targets to be met, behavioral and environmental factors that increase cancer risk must be reduced, and high-quality screening services, timely follow-up, and evidence-based treatments must be available and accessible to all persons. Several effective primary and secondary prevention measures, such as vaccination against infectious agents that cause cancer (i.e., hepatitis B virus and human papillomavirus), help with smoking cessation, and cancer screening, when effectively implemented and sustained, could reduce the number of new cancer cases and prevent many cancer-related deaths (21). Evidence-based interventions can be implemented at both the individual level and the population level to reduce cancer risk factors, promote healthy living, and encourage cancer screening (5).

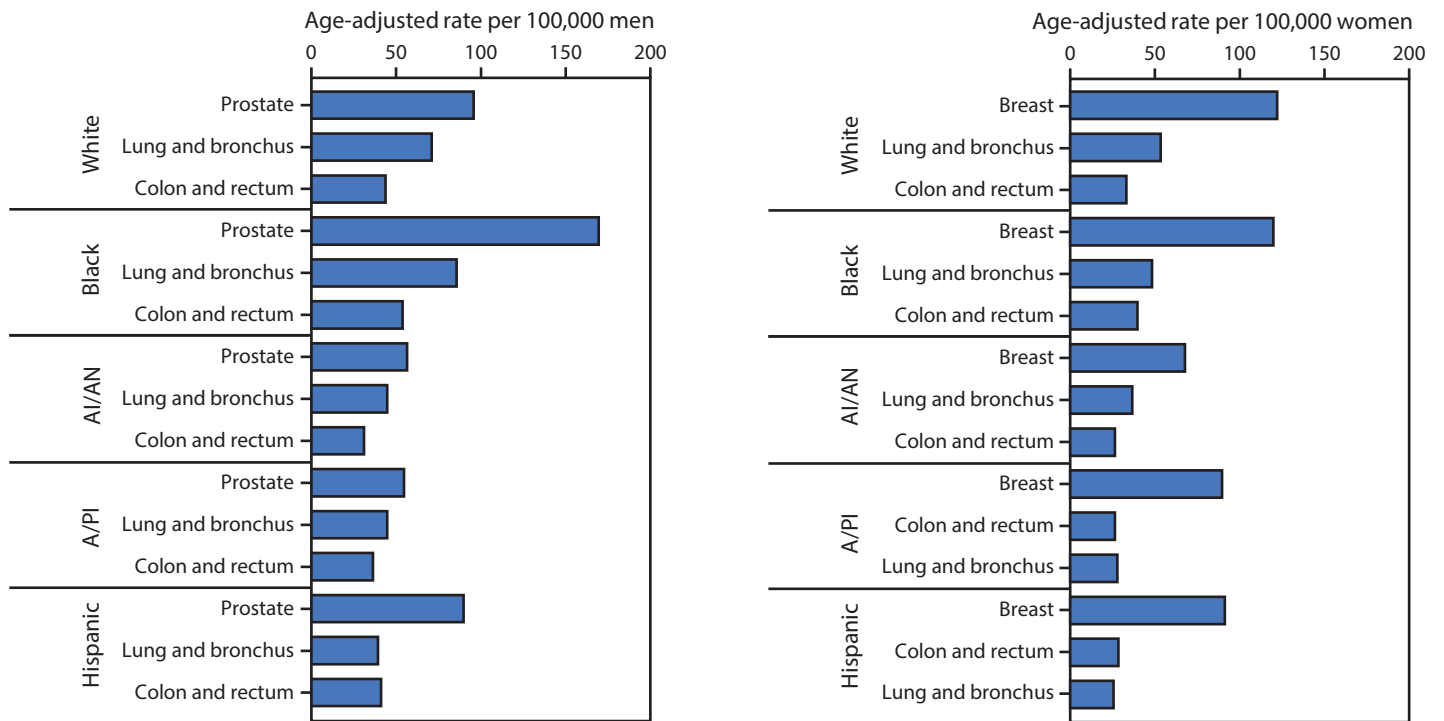
Acknowledgment

Data were provided by state and regional cancer registry personnel.

References

1. US Cancer Statistics Working Group. United States cancer statistics: 1999–2012. Incidence and mortality web-based report. Atlanta, GA: US Department of Health and Human Services, CDC, National Cancer Institute; 2015. <http://www.cdc.gov/uscs.index.htm>
2. CDC. Summary of notifiable noninfectious conditions and disease outbreaks—United States. *MMWR Morb Mortal Wkly Rep* 2014;63(55).
3. CDC. Summary of notifiable infectious diseases and conditions—United States, 2014. *MMWR Morb Mortal Wkly Rep* 2014;63(54).
4. Heron M. Deaths: leading causes for 2012. *Natl Vital Stat Rep* 2015;64:1–93. http://www.cdc.gov/nchs/data/nvsr/nvsr64/nvsr64_10.pdf
5. Colditz GA, Wolin KY, Gehlert S. Applying what we know to accelerate cancer prevention. *Sci Transl Med* 2012;4:127rv4. <http://dx.doi.org/10.1126/scitranslmed.3003218>
6. Weir HK, Thun MJ, Hankey BF, et al. Annual report to the nation on the status of cancer, 1975–2000, featuring the uses of surveillance data for cancer prevention and control. *J Natl Cancer Inst* 2003;95:1276–99. <http://dx.doi.org/10.1093/jnci/djg040>
7. US Department of Health and Human Services. Healthy people 2020. Washington, DC: US Department of Health and Human Services; 2011. <http://www.healthypeople.gov/2020/topicsobjectives2020/default.aspx>
8. Fisher R, Haenlein M. Legislative authorizations for cancer registries. In: National Cancer Institute, National Institutes of Health. State cancer legislative database update. Bethesda, MD: US Department of Health and Human Services, Public Health Service, National Institutes of Health. National Cancer Institute; 1991:8–15.
9. CDC. State cancer registries: status of authorizing legislation and enabling regulations—United States, October 1993. *MMWR Morb Mortal Wkly Rep* 1994;43:71–5.
10. Fritz ARL. The SEER program code manual. Bethesda, MD: National Cancer Institute; 1998.
11. Havener LTM, editor. Standards for cancer registries. Volume II: data standards and data dictionary. 13th ed. Version 11.3. Springfield, IL: North American Association of Central Cancer Registries; 2008.
12. Fritz A, Percy C, Jack A. International classification of diseases of oncology. Geneva, Switzerland: World Health Organization; 2000.
13. National Cancer Institute. Hematopoietic codes based on WHO classification of tumours of haematopoietic and lymphoid tissues. Rockville, MD: US Department of Health and Human Services, National Cancer Institute; 2008. <http://seer.cancer.gov/iccc>
14. Hetzel AMUS. Vital Statistics System: major activities and developments, 1950–95. Atlanta, GA: US Department of Health and Human Services, CDC, National Center for Health Statistics; 1997. PHS 97-1993.
15. World Health Organization. International statistical classification of diseases and related health problems. 10th revision. Geneva, Switzerland: World Health Organization; 1992.
16. Miniño AM, Heron MP, Murphy SL, Kochanek KD; CDC, National Center for Health Statistics, National Vital Statistics System. Deaths: final data for 2004. *Natl Vital Stat Rep* 2007;55:1–119.
17. Clegg LX, Reichman ME, Hankey BF, et al. Quality of race, Hispanic ethnicity, and immigrant status in population-based cancer registry data: implications for health disparity studies. *Cancer Causes Control* 2007;18:177–87. <http://dx.doi.org/10.1007/s10552-006-0089-4>
18. Arias E, Schauman WS, Eschbach K, Sorlie PD, Backlund E. The validity of race and Hispanic origin reporting on death certificates in the United States. *Vital Health Stat* 2008;(148):1–23. http://www.cdc.gov/nchs/data/series/sr_02/sr02_148.pdf
19. NAACCR Asian Pacific Islander Work Group. NAACCR Asian Pacific Islander identification algorithm. Springfield, IL: North American Association of Central Cancer Registries; 2008.
20. Henley SJ, Singh S, King J, Wilson R, Ryerson B. Invasive cancer incidence—United States, 2010. *MMWR Morb Mortal Wkly Rep* 2014;63:253–9.
21. Agency for Healthcare Research and Quality. The guide to clinical preventive services, 2014. Rockville, MD: Agency for Healthcare Research and Quality; 2015. <http://www.ahrq.gov/professionals/clinicians-providers/guidelines-recommendations/guide/index.html>

FIGURE 1. Age-adjusted rate* of invasive† cancer cases for most common sites, by sex and race/ethnicity[§] — United States, 2012¶



Abbreviations: AI/AN = American Indian/Alaska Native; A/PI = Asian/Pacific Islander.

Sources: CDC's National Program of Cancer Registries and National Cancer Institute's Surveillance, Epidemiology, and End Results program.

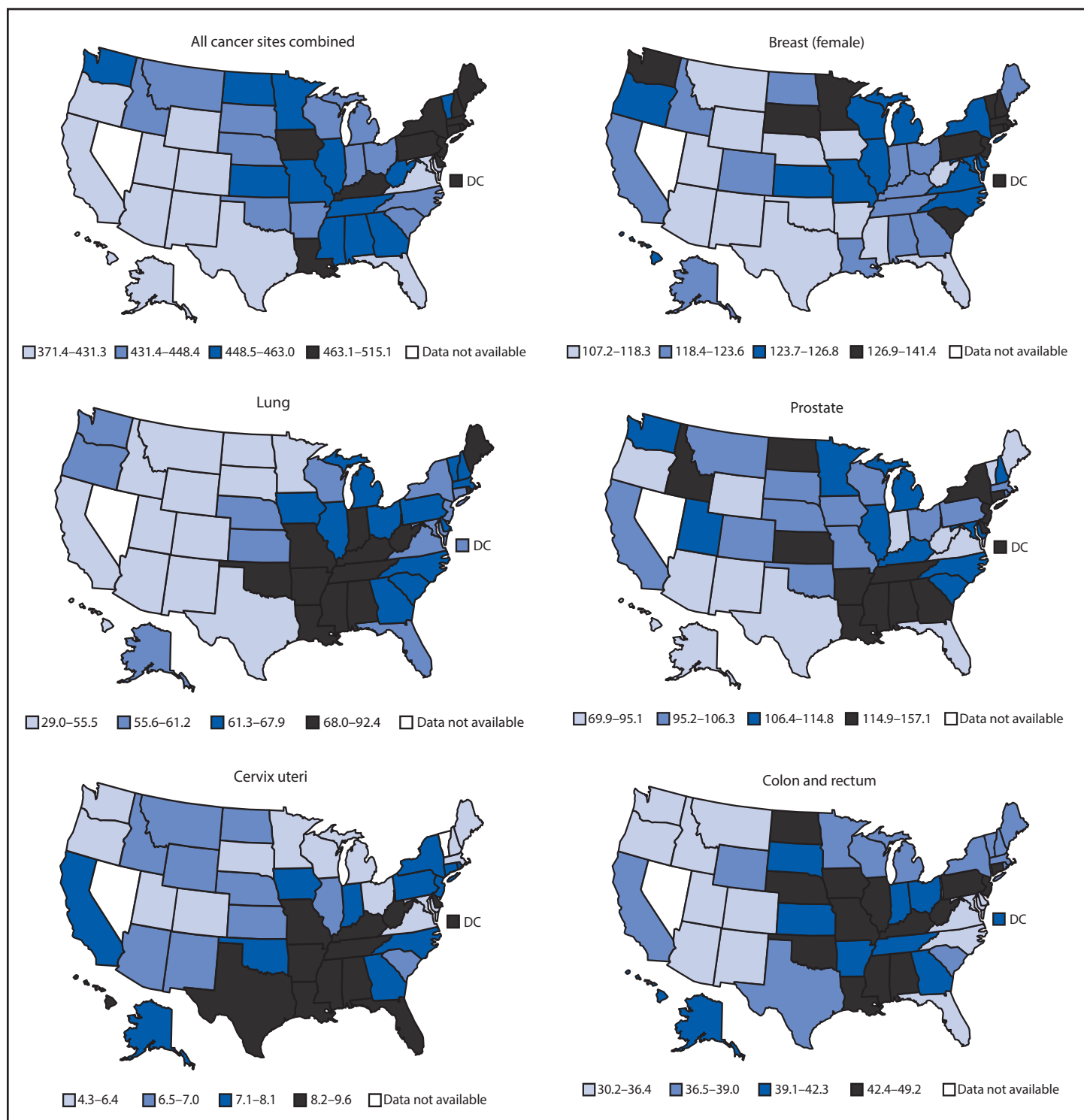
* Rates are the number of cases per 100,000 persons and are age-adjusted to the 2000 U.S. standard population (19 age groups – Census P25–1130). For more information, see USCS technical notes (<http://www.cdc.gov/cancer/npcr/uscs/pdf/uscs-2012-technical-notes.pdf>).

† Invasive cancer excludes basal and squamous cell carcinomas of the skin except when these occur on the skin of the genital organs, and in situ cancers except urinary bladder. Urinary bladder cancer includes invasive and in situ.

§ Race categories are not mutually exclusive from Hispanic origin. Rates are not presented for persons of unknown or other race. Data for specified racial or ethnic populations other than white and black should be interpreted with caution. For more information, see USCS technical notes (<http://www.cdc.gov/cancer/npcr/uscs/pdf/uscs-2012-technical-notes.pdf#nameddest=IntRaceEthnicityData>).

¶ Data are compiled from cancer registries that meet the data quality criteria for all invasive cancer sites combined (covering approximately 99% of the U.S. population). Registry-specific data quality information is available at <http://www.cdc.gov/cancer/npcr/uscs/pdf/uscs-2012-technical-notes.pdf#nameddest=RegistriesPubCriteria>. Caution should be used when comparing incidence and death rates because of the difference in population coverage.

FIGURE 2. Age-adjusted rate* of invasive† cancer cases, by primary cancer site and state — United States, 2012§

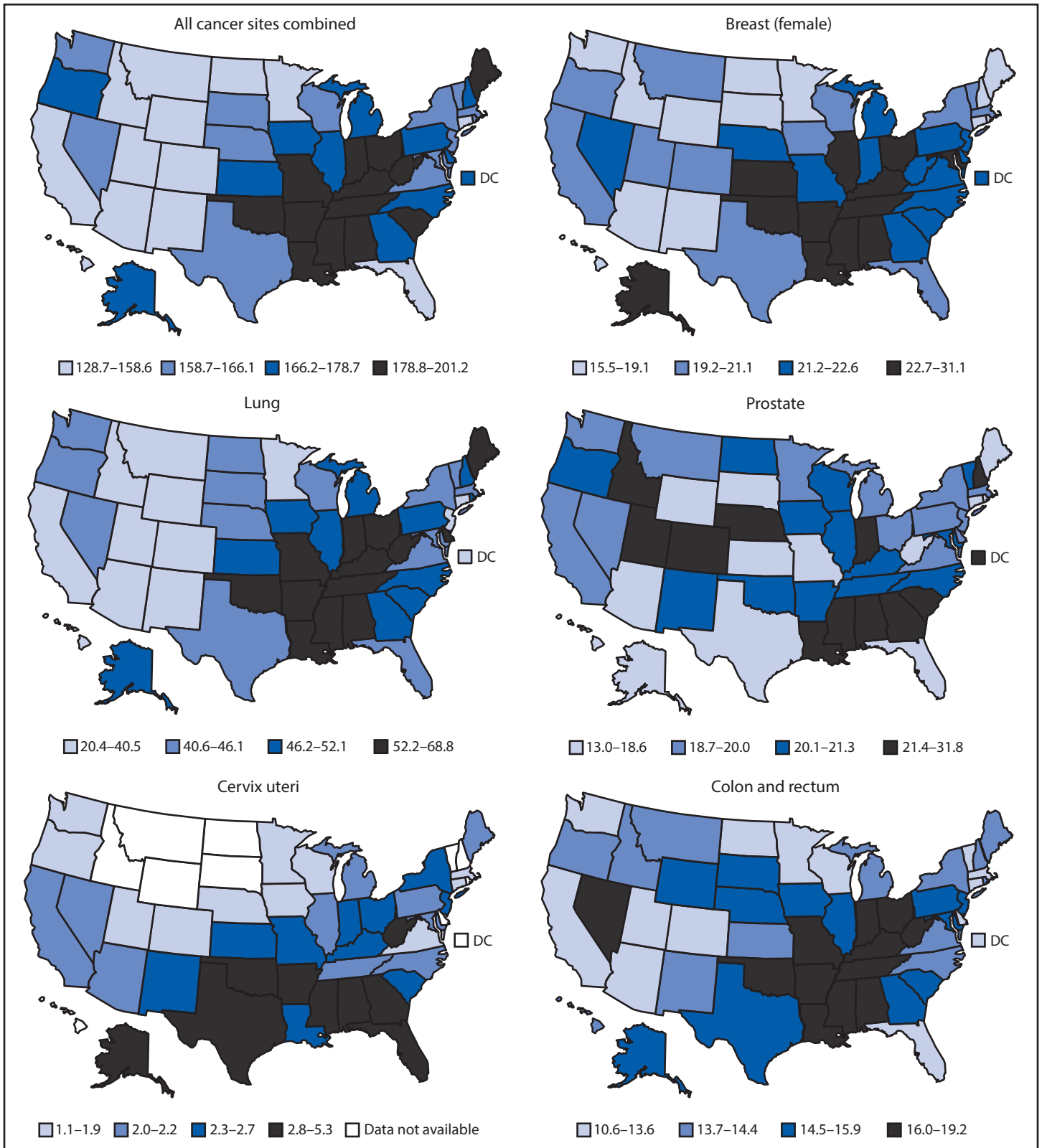


* Rates are the number of cases per 100,000 persons and are age-adjusted to the 2000 U.S. standard population (19 age groups – Census P25–1130). For more information, see USCS technical notes (<http://www.cdc.gov/cancer/npcr/uscs/pdf/uscs-2012-technical-notes.pdf>).

† Invasive cancer excludes basal and squamous cell carcinomas of the skin except when these occur on the skin of the genital organs, and in situ cancers except urinary bladder. Urinary bladder cancer includes invasive and in situ.

§ Data are compiled from cancer registries that meet the data quality criteria for all invasive cancer sites combined (covering approximately 99% of the U.S. population). Registry-specific data quality information is available at <http://www.cdc.gov/cancer/npcr/uscs/pdf/uscs-2012-technical-notes.pdf#nameddest=RegistriesPubCriteria>. Caution should be used when comparing incidence and death rates because of potential differences in population coverage.

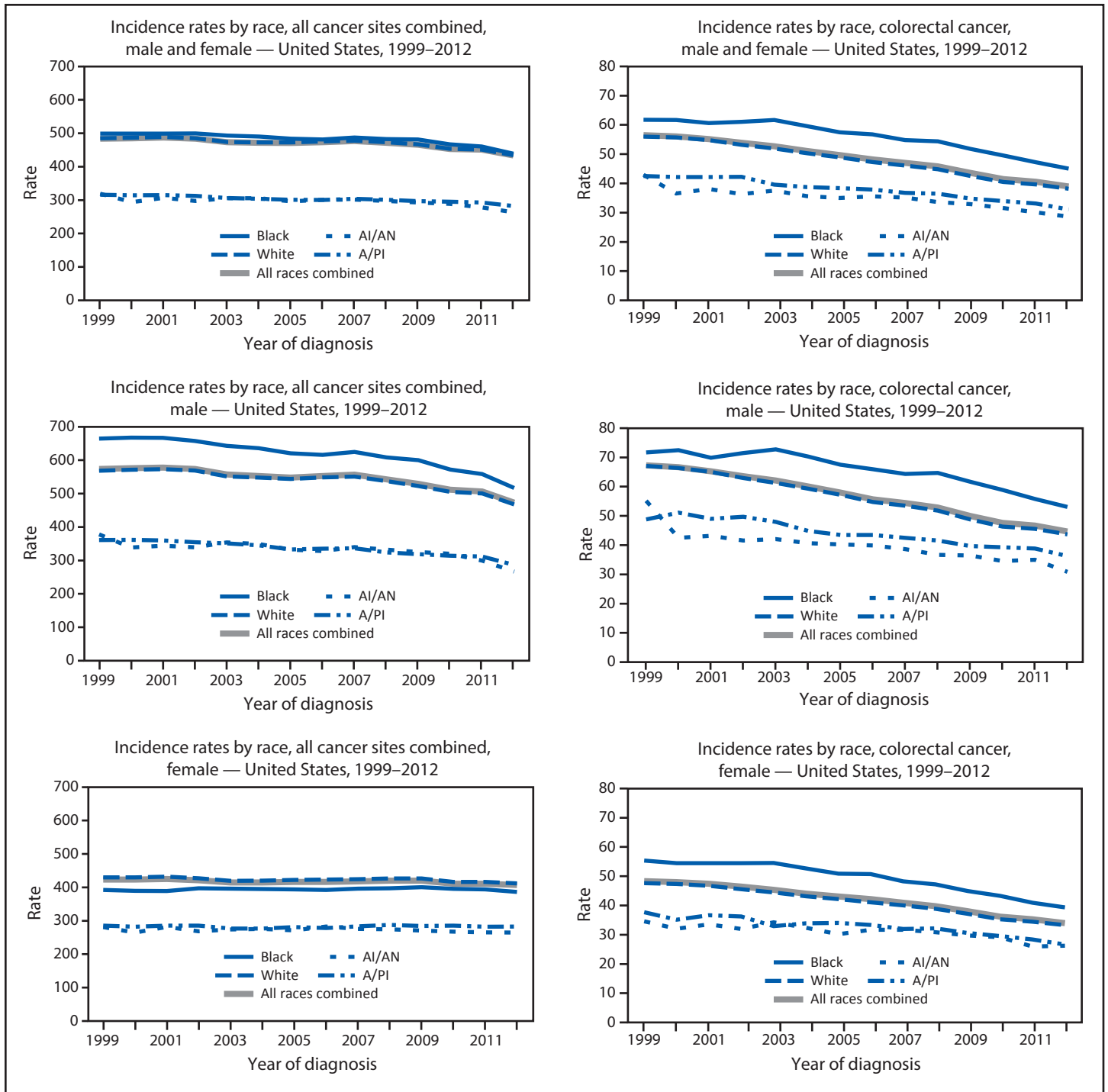
FIGURE 3. Age-adjusted rate* of cancer deaths, by primary cancer site and state — United States, 2012†



* Rates are the number of deaths per 100,000 persons and are age-adjusted to the 2000 U.S. standard population (19 age groups – Census P25–1130). For more information, see USCS Technical notes (<http://www.cdc.gov/cancer/npcr/uscs/pdf/uscs-2012-technical-notes.pdf>).

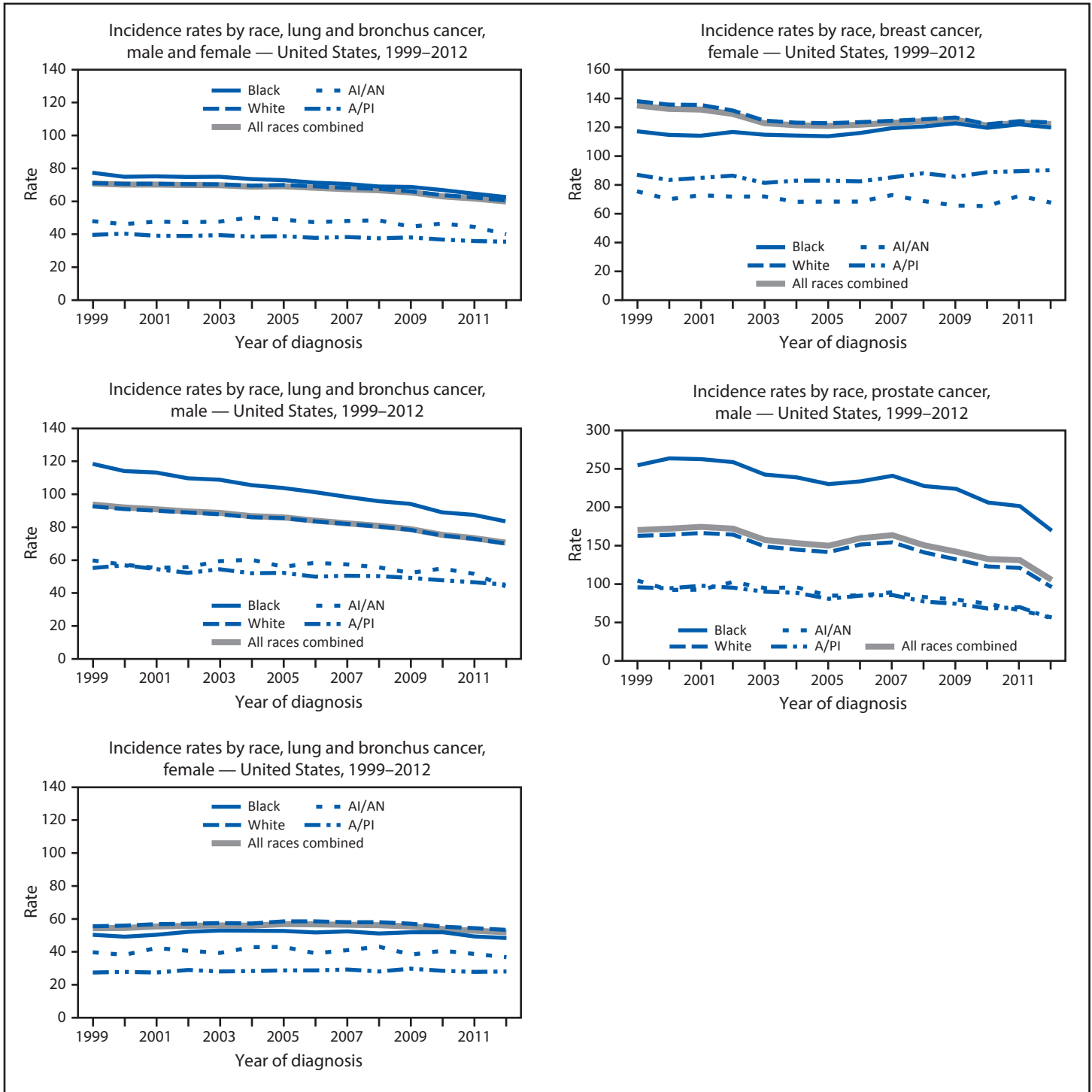
† Data are from the National Vital Statistics System (NVSS). Data for death rates cover 100% of the U.S. population. Caution should be used when comparing incidence and death rates because of potential differences in population coverage.

FIGURE 4. Age-adjusted rate* of invasive† cancer cases, by primary cancer site, race,§ and sex — United States, 1999–2012¶



See figure footnotes on the next page.

FIGURE 4. (Continued) Age-adjusted rate* of invasive† cancer cases, by primary cancer site, race,§ and sex — United States, 1999–2012¶



Abbreviations: AI/AN = American Indian/Alaska Native; A/PI = Asian/Pacific Islander.

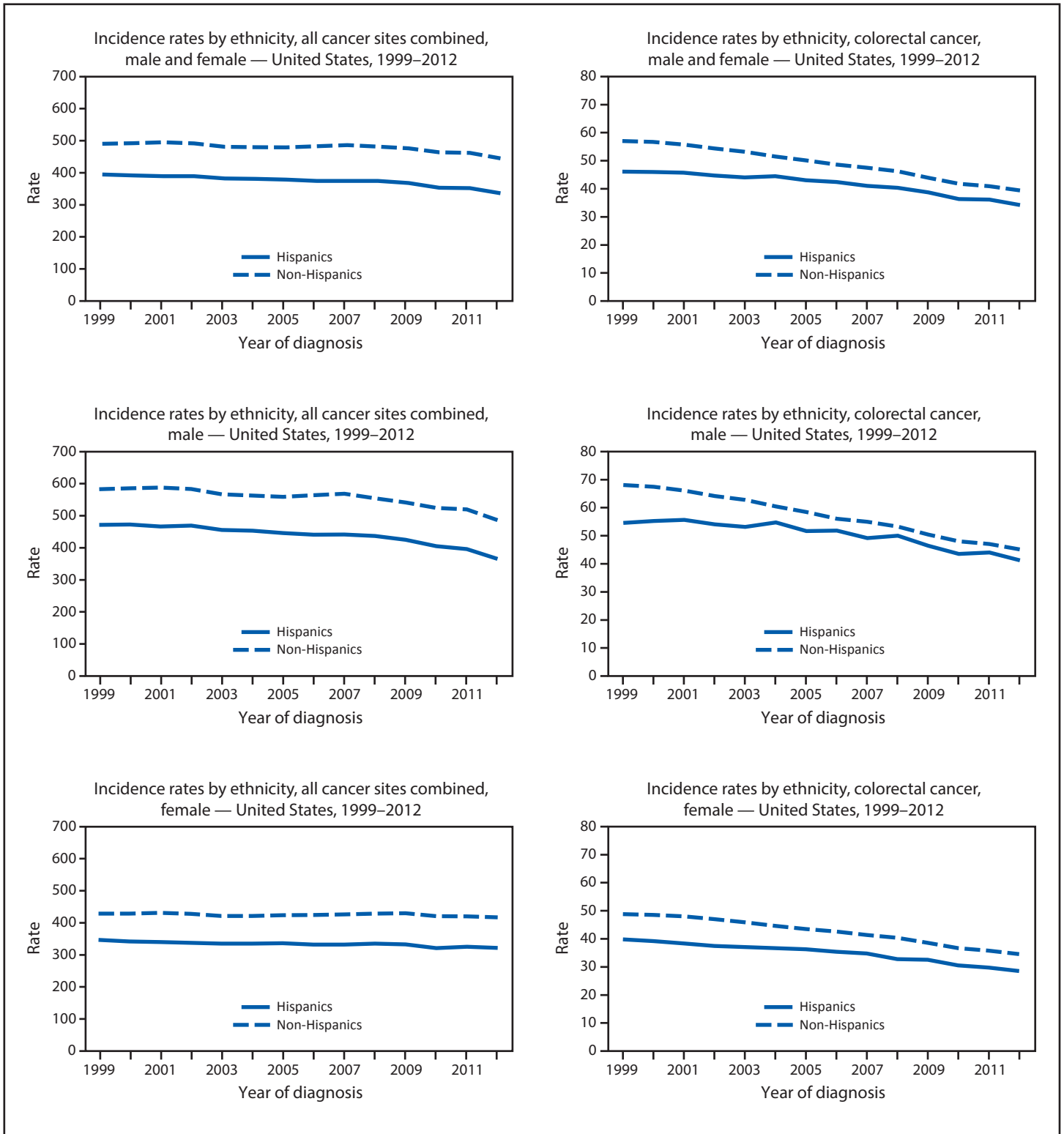
* Rates are the number of cases per 100,000 persons and are age-adjusted to the 2000 U.S. standard population (19 age groups – Census P25–1130). For more information, see USCS technical notes (<http://www.cdc.gov/cancer/npcr/uscs/pdf/uscs-2012-technical-notes.pdf>).

† Invasive cancer excludes basal and squamous cell carcinomas of the skin except when these occur on the skin of the genital organs, and in situ cancers except urinary bladder. Urinary bladder cancer includes invasive and in situ.

§ Rates are not presented for persons of unknown or other race. Data for specified racial populations other than white and black should be interpreted with caution. For more information, see USCS technical notes (<http://www.cdc.gov/cancer/npcr/uscs/pdf/uscs-2012-technical-notes.pdf#nameddest=IntRaceEthnicityData>).

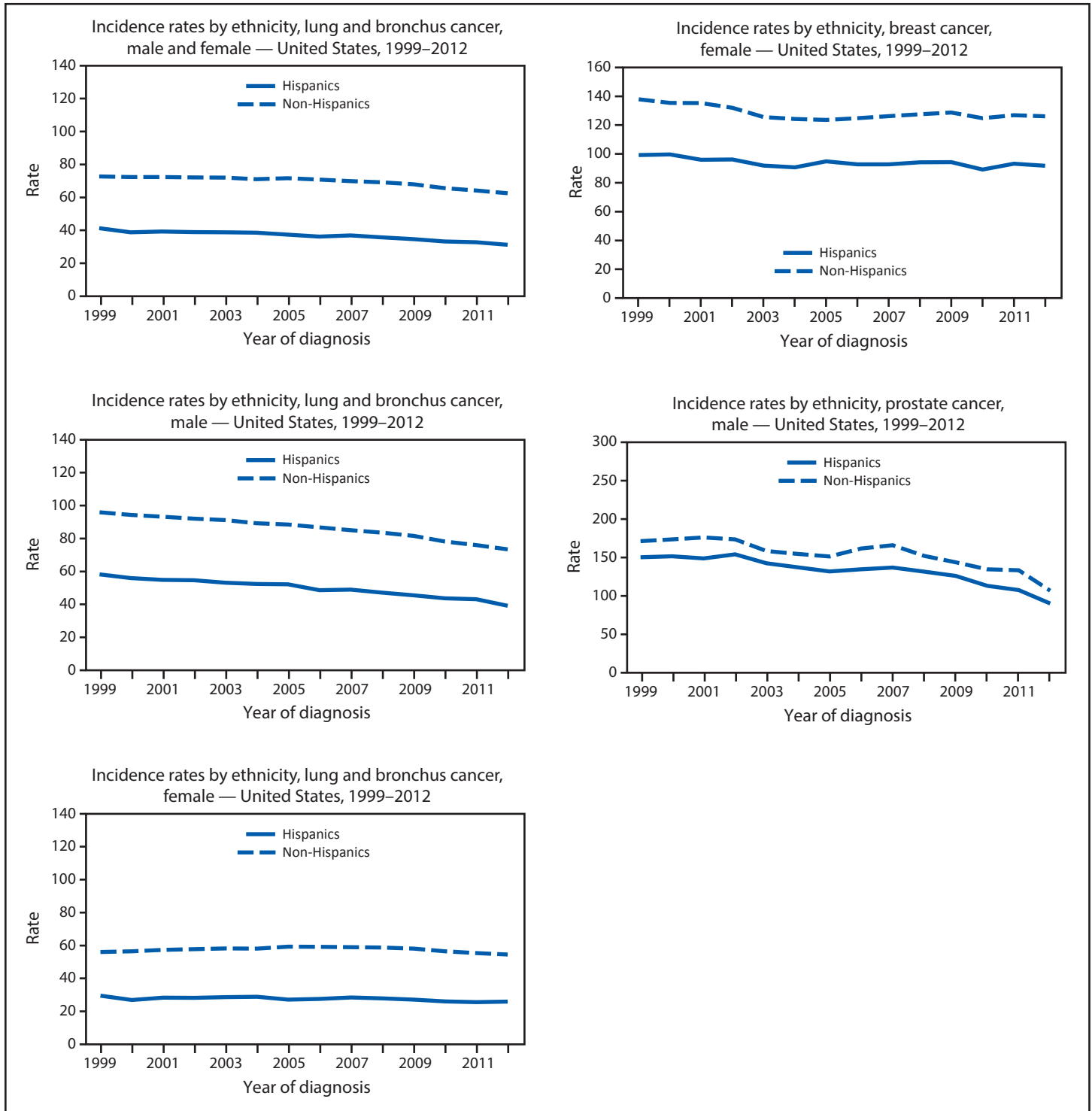
¶ Data are compiled from cancer registries that meet the data quality criteria for all invasive cancer sites combined for all years, 1999–2012 (covering approximately 92% of the U.S. population). See registry-specific data quality information for all years, 1999–2012 (<http://www.cdc.gov/cancer/npcr/uscs/pdf/uscs-2012-technical-notes.pdf#nameddest=RegistriesPubCriteria>). Caution should be used when comparing incidence and death rates because of potential differences in population coverage.

FIGURE 5. Age-adjusted rate* of invasive† cancer cases, by primary cancer site, ethnicity,§ and sex — United States, 1999–2012¶



See figure footnotes on the next page.

FIGURE 5. (Continued) Age-adjusted rate* of invasive† cancer cases, by primary cancer site, ethnicity,§ and sex — United States, 1999–2012¶



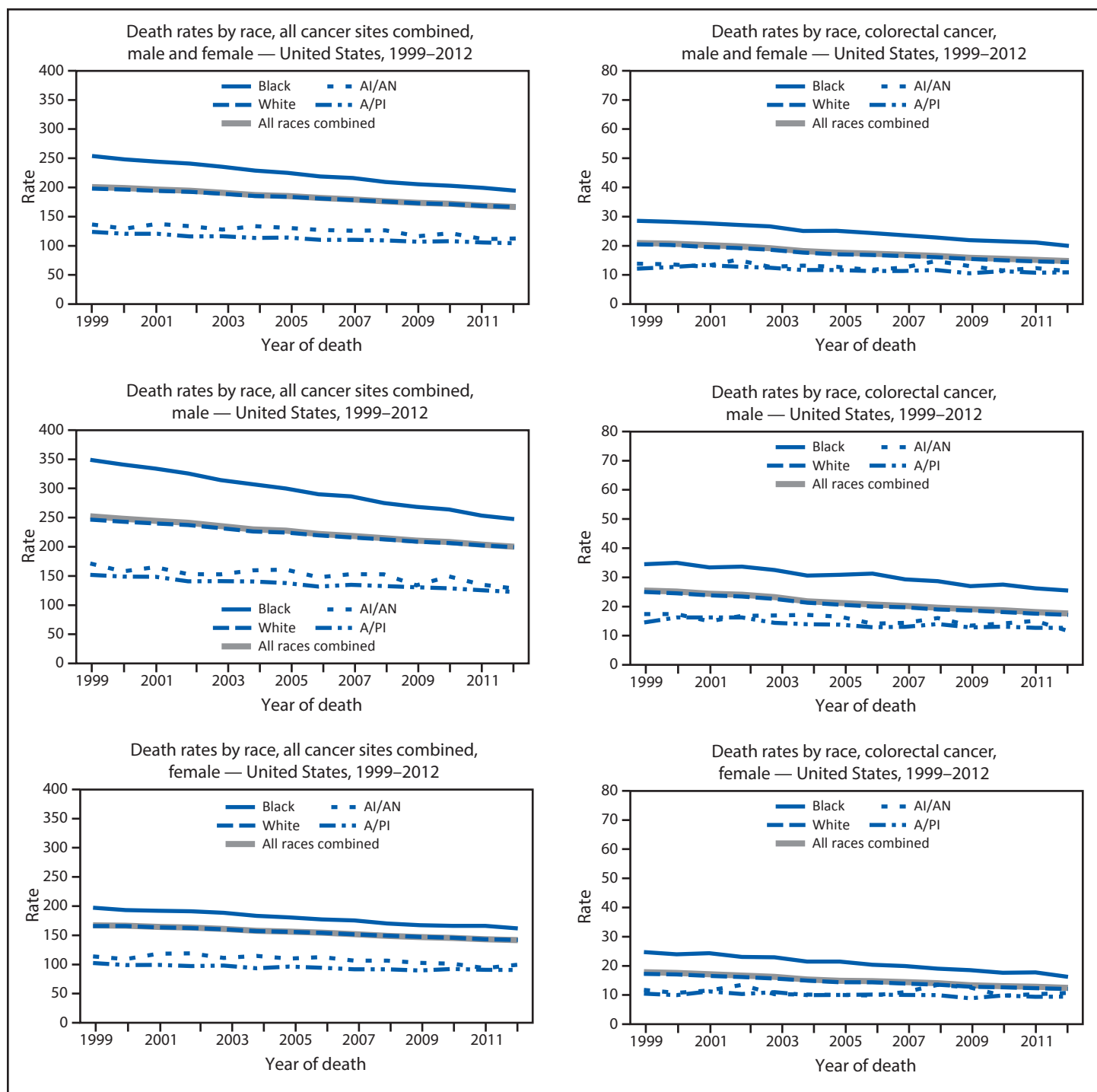
* Rates are the number of cases per 100,000 persons and are age-adjusted to the 2000 U.S. standard population (19 age groups – Census P25–1130). For more information, see USCS technical notes (<http://www.cdc.gov/cancer/npcr/uscs/pdf/uscs-2012-technical-notes.pdf>).

† Invasive cancer excludes basal and squamous cell carcinomas of the skin except when these occur on the skin of the genital organs, and in situ cancers except urinary bladder. Urinary bladder cancer includes invasive and in situ.

§ Data for specified ethnic populations should be interpreted with caution. For more information, see USCS technical notes (<http://www.cdc.gov/cancer/npcr/uscs/pdf/uscs-2012-technical-notes.pdf#nameddest=IntRaceEthnicityData>).

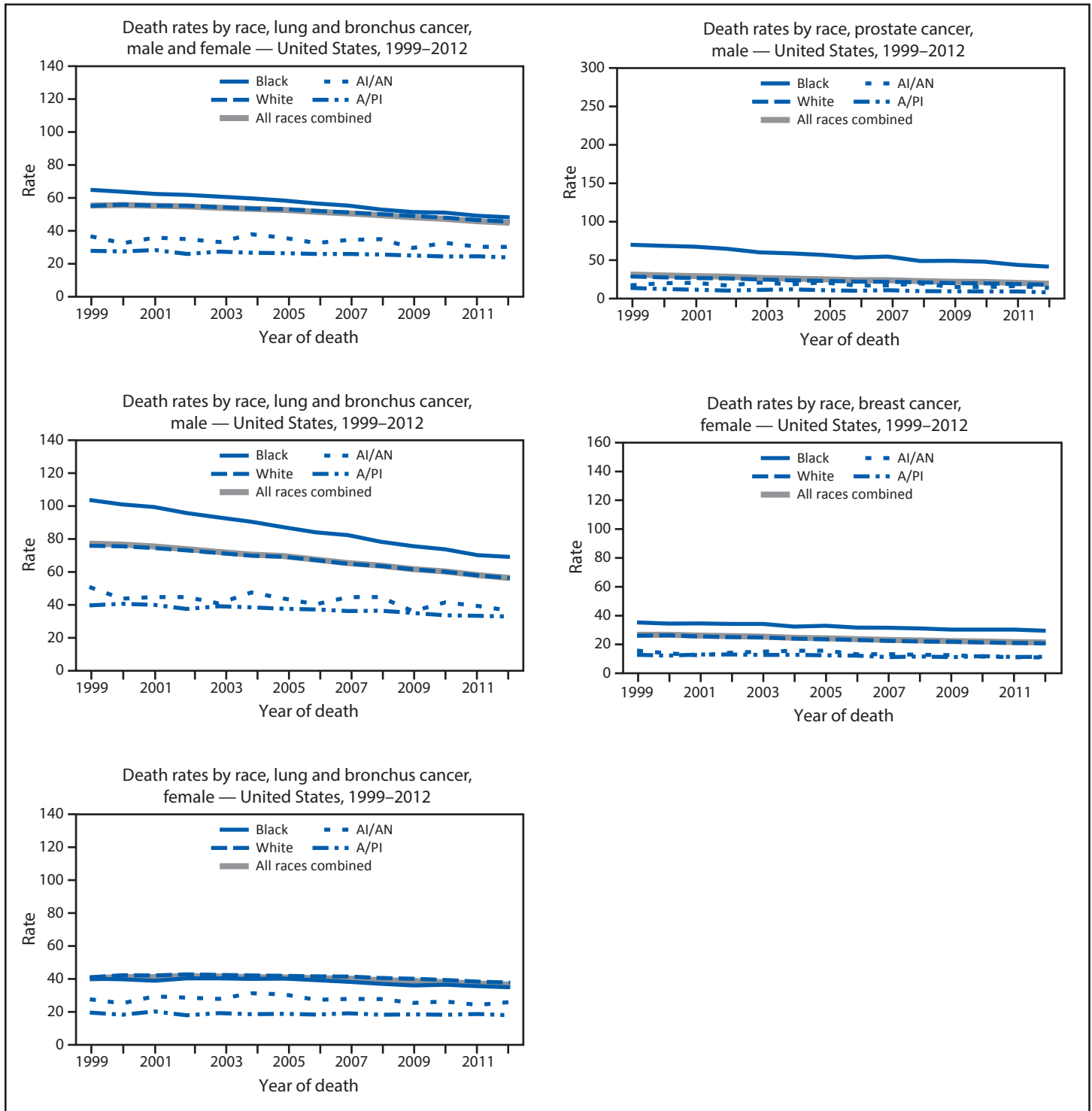
¶ Data are compiled from cancer registries that meet the data quality criteria for all invasive cancer sites combined for all years, 1999–2012 (covering approximately 92% of the U.S. population). See registry-specific data quality information for all years, 1999–2012 (<http://www.cdc.gov/cancer/npcr/uscs/pdf/uscs-2012-technical-notes.pdf#nameddest=RegistriesPubCriteria>). Caution should be used when comparing incidence and death rates because of potential differences in population coverage.

FIGURE 6. Age-adjusted rate* of cancer deaths, by primary cancer site, race,[†] and sex — United States, 1999–2012[§]



See figure footnotes on the next page.

FIGURE 6. (Continued) Age-adjusted rate* of cancer deaths, by primary cancer site, race,[†] and sex — United States, 1999–2012[§]



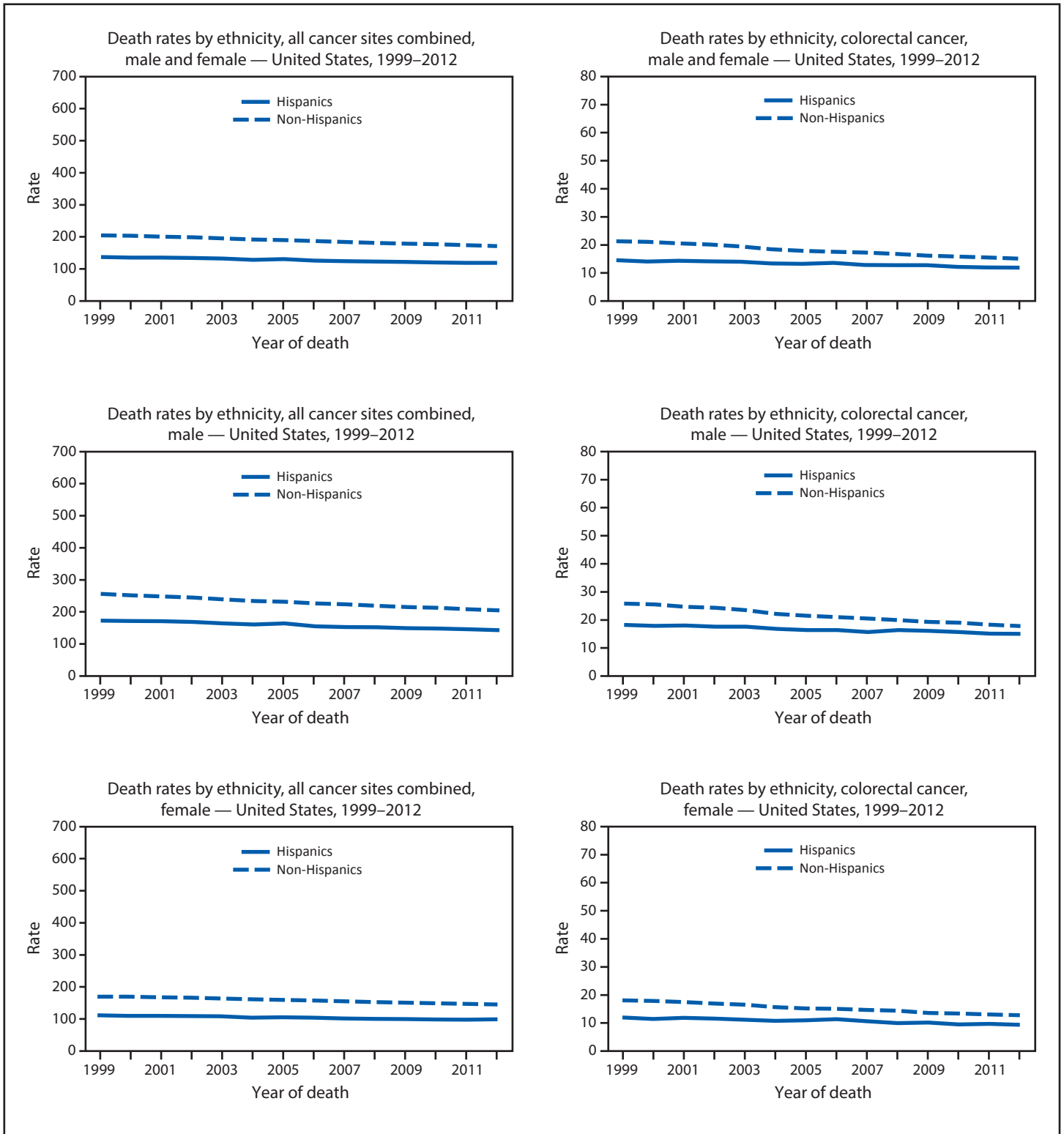
Abbreviations: AI/AN = American Indian/Alaska Native; A/PI = Asian/Pacific Islander.

* Rates are the number of deaths per 100,000 persons and are age-adjusted to the 2000 U.S. standard population (19 age groups – Census P25–1130). For more information, see USCS technical notes (<http://www.cdc.gov/cancer/npcr/uscs/pdf/uscs-2012-technical-notes.pdf>).

[†] Rates are not presented for persons of unknown or other race. Data for specified racial populations other than white and black should be interpreted with caution. For more information, see USCS technical notes (<http://www.cdc.gov/cancer/npcr/uscs/pdf/uscs-2012-technical-notes.pdf#nameddest=IntRaceEthnicityData>).

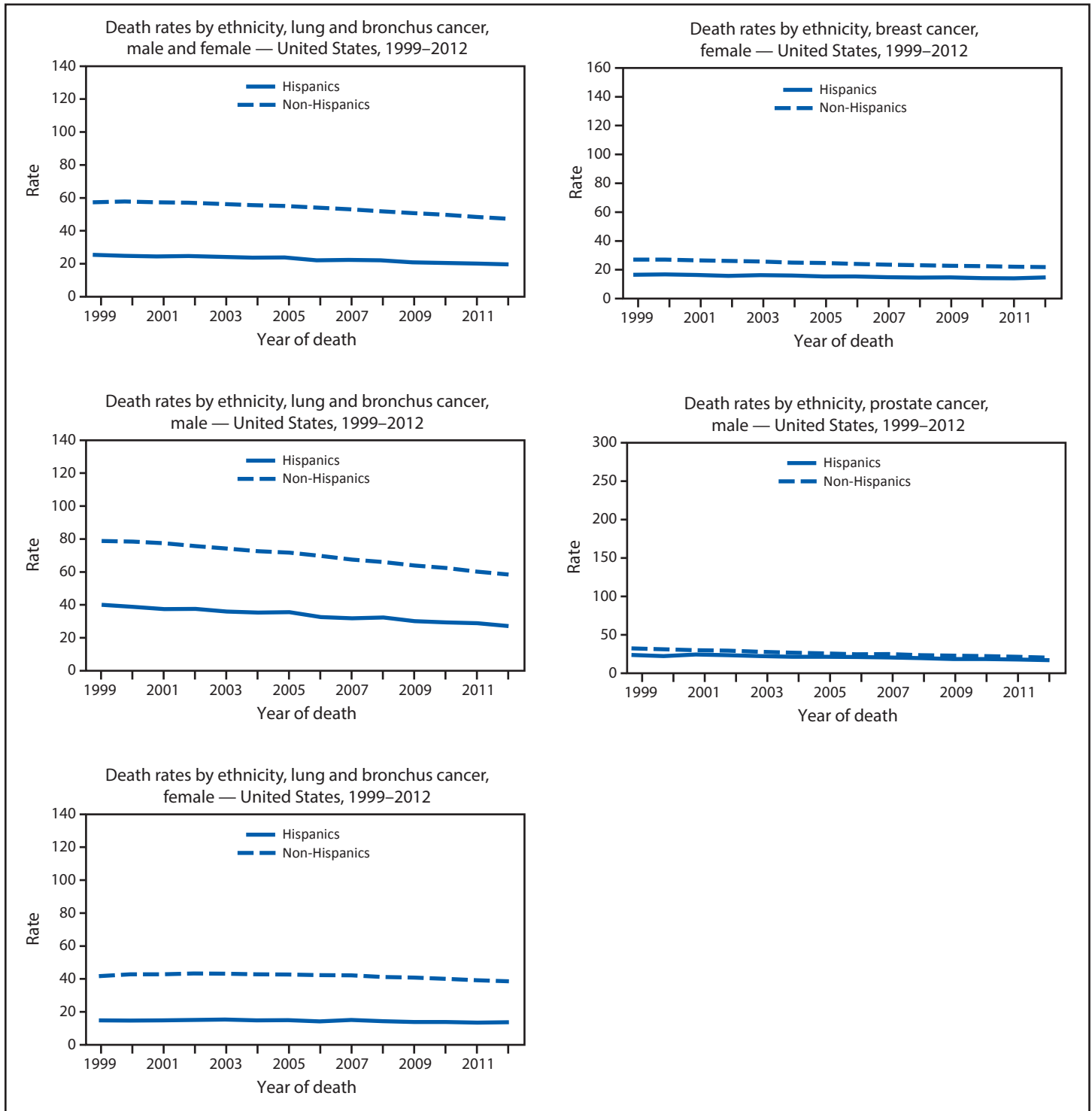
[§] Data are from the National Vital Statistics System (NVSS). Data for death rates cover 100% of the U.S. population. Caution should be used when comparing incidence and death rates because of potential differences in population coverage.

FIGURE 7. Age-adjusted rate* of cancer deaths, by primary cancer site, ethnicity,[†] and sex — United States, 1999–2012[§]



See figure footnotes on the next page.

FIGURE 7. (Continued) Age-adjusted rate* of cancer deaths, by primary cancer site, ethnicity,[†] and sex — United States, 1999–2012[§]



* Rates are the number of deaths per 100,000 persons and are age-adjusted to the 2000 U.S. standard population (19 age groups – Census P25–1130). For more information, see USCS technical notes (<http://www.cdc.gov/cancer/npcr/uscs/pdf/uscs-2012-technical-notes.pdf>).

[†] Data for specified ethnic populations should be interpreted with caution. For more information, see USCS technical notes (<http://www.cdc.gov/cancer/npcr/uscs/pdf/uscs-2012-technical-notes.pdf#nameddest=IntRaceEthnicityData>).

[§] Data are from the National Vital Statistics System (NVSS). Data for death rates cover 100% of the U.S. population. Caution should be used when comparing incidence and death rates because of potential differences in population coverage.

TABLE 1. Reported number and age-adjusted rate* of invasive[†] cancer cases, by primary cancer site — United States, 2012[§]

Cancer site	All races/ethnicities	
	No.	Rate
All cancer sites combined	1,529,078	440.3
Oral cavity and pharynx	39,879	11.2
Lip	1,842	0.5
Tongue	12,374	3.4
Salivary gland	4,254	1.3
Floor of mouth	1,936	0.5
Gum and other mouth	5,331	1.5
Nasopharynx	1,758	0.5
Tonsil	7,330	2.0
Oropharynx	1,733	0.5
Hypopharynx	2,281	0.6
Other oral cavity and pharynx	1,040	0.3
Digestive system	273,535	78.3
Esophagus	15,993	4.5
Stomach	22,623	6.6
Small intestine	7,894	2.3
Colon and rectum	134,784	38.9
Colon excluding rectum	95,962	27.8
Rectum and rectosigmoid junction	38,822	11.1
Anus, anal canal, and anorectum	6,338	1.8
Liver and Intrahepatic bile duct	28,012	7.7
Gallbladder	3,835	1.1
Other biliary	5,963	1.7
Pancreas	43,213	12.3
Retroperitoneum	1,321	0.4
Peritoneum, omentum, and mesentery	1,924	0.5
Other digestive organs	1,635	0.5
Respiratory system	225,933	64.7
Nose, nasal cavity, and middle ear	2,274	0.7
Larynx	12,152	3.4
Lung and bronchus	210,828	60.4
Pleura	105	0
Trachea, mediastinum, and other respiratory organs	574	0.2
Bones and joints	2,951	0.9
Soft tissue including heart	10,728	3.2
Skin excluding basal and squamous	73,181	21.5
Melanoma of the skin	67,753	19.9
Other nonepithelial skin	5,428	1.6
Male and female breast	226,272	65.6
Female breast	224,147	122.2
Male breast	2,125	1.4
Female genital system	90,303	48.8
Cervix	12,042	7.4
Corpus and uterus, NOS	49,154	25.7
Corpus	47,570	24.9
Uterus, NOS	1,584	0.8
Ovary	20,785	11.3
Vagina	1,296	0.7
Vulva	4,851	2.6
Other female genital organs	2,175	1.2

TABLE 1. (Continued) Reported number and age-adjusted rate* of invasive[†] cancer cases, by primary cancer site — United States, 2012[§]

Cancer site	All races/ethnicities	
	No.	Rate
Male genital system	187,308	111.8
Prostate	177,489	105.3
Testis	8,189	5.5
Penis	1,283	0.8
Other male genital organs	347	0.2
Urinary system	128,103	37.0
Urinary bladder	69,974	20.2
Kidney and renal pelvis	55,231	15.9
Ureter	1,918	0.6
Other urinary organs	980	0.3
Eye and orbit	2,733	0.8
Brain and other nervous system	21,490	6.5
Brain	20,151	6.0
Cranial nerves other nervous system	1,339	0.4
Endocrine system	48,594	15.0
Thyroid	46,279	14.3
Other endocrine including thymus	2,315	0.7
Lymphomas	71,692	21.1
Hodgkin lymphoma	8,273	2.6
Non-Hodgkin lymphoma	63,419	18.5
Myeloma	21,829	6.3
Leukemias	44,396	13.2
Acute lymphocytic leukemia	4,846	1.6
Chronic lymphocytic leukemia	14,821	4.2
Acute myeloid leukemia	13,820	4.1
Chronic myeloid leukemia	5,543	1.7
Other leukemias	5,366	1.6
Mesothelioma	3,199	0.9
Kaposi Sarcoma	1,076	0.3
Miscellaneous	55,876	16.3

Abbreviation: NOS = not otherwise specified.

* Rates are the number of cases per 100,000 persons and are age-adjusted to the 2000 U.S. standard population (19 age groups – Census P25–1130). For more information, see USCS technical notes (<http://www.cdc.gov/cancer/npcr/uscs/pdf/uscs-2012-technical-notes.pdf>).

[†] Invasive cancer excludes basal and squamous cell carcinomas of the skin except when these occur on the skin of the genital organs, and in situ cancers except urinary bladder. Urinary bladder cancer includes invasive and in situ.

[§] Data are compiled from cancer registries that meet the data quality criteria for all invasive cancer sites combined (covering approximately 99% of the U.S. population). Registry-specific data quality information is available at <http://www.cdc.gov/cancer/npcr/uscs/pdf/uscs-2012-technical-notes.pdf>.

TABLE 2. Reported number and age-adjusted rate* of cancer deaths, by primary cancer site — United States, 2012[†]

Cancer site	All races/ethnicities	
	No.	Rate
All cancer sites combined	582,607	166.4
Oral cavity and pharynx	8,924	2.5
Lip	71	0
Tongue	2,224	0.6
Salivary gland	869	0.2
Floor of mouth	75	0
Gum and other mouth	1,275	0.4
Nasopharynx	666	0.2
Tonsil	879	0.2
Oropharynx	891	0.2
Hypopharynx	356	0.1
Other oral cavity and pharynx	1,618	0.4
Digestive system	147,024	41.6
Esophagus	14,649	4.1
Stomach	11,191	3.2
Small intestine	1,293	0.4
Colon and rectum	51,516	14.7
Colon excluding rectum	41,867	12.0
Rectum and rectosigmoid junction	9,649	2.7
Anus, anal canal, and anorectum	889	0.3
Liver and intrahepatic bile duct	22,972	6.3
Gallbladder	2,102	0.6
Other biliary	1,519	0.4
Pancreas	38,797	11.0
Retroperitoneum	207	0.1
Peritoneum, omentum, and mesentery	750	0.2
Other digestive organs	1,139	0.3
Respiratory system	161,851	46.2
Nose, nasal cavity, and middle ear	458	0.1
Larynx	3,662	1.0
Lung and bronchus	157,423	45.0
Pleura	82	0
Trachea, mediastinum, and other respiratory organs	226	0.1
Bones and joints	1,399	0.4
Soft tissue including heart	4,559	1.3
Skin excluding basal and squamous	12,463	3.6
Melanoma of the skin	9,251	2.7
Other nonepithelial skin	3,212	0.9
Male and female breast	41,555	11.8
Female breast	41,150	21.3
Male breast	405	0.3

TABLE 2. (Continued) Reported number and age-adjusted rate* of cancer deaths, by primary cancer site — United States, 2012[†]

Cancer site	All races/ethnicities	
	No.	Rate
Female genital system	29,405	15.2
Cervix	4,074	2.3
Corpus and uterus, NOS	8,911	4.5
Corpus	3,812	1.9
Uterus, NOS	5,099	2.6
Ovary	14,404	7.4
Vagina	429	0.2
Vulva	1,034	0.5
Other female genital organs	553	0.3
Male genital system	27,955	20.0
Prostate	27,244	19.6
Testis	386	0.3
Penis	273	0.2
Other male genital organs	52	0
Urinary system	29,594	8.5
Urinary bladder	15,245	4.4
Kidney and renal pelvis	13,518	3.8
Ureter	378	0.1
Other urinary organs	453	0.1
Eye and orbit	279	0.1
Brain and other nervous system	15,276	4.4
Endocrine system	2,660	0.8
Thyroid	1,690	0.5
Other endocrine including thymus	970	0.3
Lymphomas	21,518	6.2
Hodgkin lymphoma	1,130	0.3
Non-Hodgkin lymphoma	20,388	5.9
Myeloma	11,821	3.4
Leukemias	23,309	6.8
Acute lymphocytic leukemia	1,408	0.4
Chronic lymphocytic leukemia	4,598	1.3
Acute myeloid leukemia	9,484	2.8
Chronic myeloid leukemia	1,017	0.3
Other leukemias	6,802	2.0
Mesothelioma	2,686	0.8
Miscellaneous	40,276	11.5

Abbreviation: NOS = not otherwise specified.

* Rates are the number of deaths per 100,000 persons and are age-adjusted to the 2000 U.S. standard population (19 age groups – Census P25–1130). For more information, see UCSC technical notes (<http://www.cdc.gov/cancer/npcr/uscs/pdf/uscs-2012-technical-notes.pdf>).[†] Data are from the National Vital Statistics System (NVSS).

TABLE 3. Reported number and age-adjusted rate* of invasive[†] cancer cases, all cancer sites combined, by geographic division and area — United States, 2012[§]

Area	All races/ethnicities	
	No.	Rate
Northeast	311,842	474.3
New England	81,778	469.6
Connecticut	20,371	477.1
Maine	8,417	475.1
Massachusetts	35,774	463.1
New Hampshire	7,576	473.5
Rhode Island	6,095	484.0
Vermont	3,545	449.0
Middle Atlantic	230,064	476.1
New Jersey	48,545	477.7
New York	105,941	475.8
Pennsylvania	75,578	476.1
Midwest	345,611	448.8
East North Central	237,817	446.2
Illinois	64,402	459.0
Indiana	31,852	439.4
Michigan	51,809	444.5
Ohio	59,848	438.0
Wisconsin	29,906	447.7
West North Central	107,794	454.7
Iowa	17,000	463.4
Kansas	14,614	460.3
Minnesota	27,833	462.8
Missouri	31,643	450.6
Nebraska	8,953	432.6
North Dakota	3,577	450.5
South Dakota	4,174	434.3
South	566,112	434.9
South Atlantic	307,360	430.4
Delaware	5,306	483.5
District of Columbia	2,954	474.9
Florida	105,651	414.2
Georgia	45,623	459.6
Maryland	27,870	430.8
North Carolina	48,367	443.0
South Carolina	24,737	447.7
Virginia	35,743	403.1
West Virginia	11,109	461.3

TABLE 3. (Continued) Reported number and age-adjusted rate* of invasive[†] cancer cases, all cancer sites combined, by geographic division and area — United States, 2012[§]

Area	All races/ethnicities	
	No.	Rate
East South Central	100,201	470.0
Alabama	25,225	451.0
Kentucky	25,845	515.1
Mississippi	15,084	457.4
Tennessee	34,047	459.4
West South Central	158,551	424.0
Arkansas	15,259	442.8
Louisiana	24,062	483.4
Oklahoma	18,785	442.8
Texas	100,445	406.2
West	— [¶]	—
Mountain	—	—
Arizona	27,680	373.4
Colorado	21,614	405.5
Idaho	7,452	437.0
Montana	5,424	434.4
Nevada	—	—
New Mexico	8,726	371.4
Utah	9,582	404.0
Wyoming	2,516	396.0
Pacific	222,519	418.1
Alaska	2,601	401.8
California	158,944	410.1
Hawaii	6,802	415.6
Oregon	19,531	422.2
Washington	34,641	460.1

* Rates are the number of cases per 100,000 persons and are age-adjusted to the 2000 U.S. standard population (19 age groups – Census P25–1130). For more information, see USCS technical notes (<http://www.cdc.gov/cancer/npcr/uscs/pdf/uscs-2012-technical-notes.pdf>).

[†] Invasive cancer excludes basal and squamous cell carcinomas of the skin except when these occur on the skin of the genital organs, and in situ cancers except urinary bladder. Urinary bladder cancer includes invasive and in situ.

[§] Data are compiled from cancer registries that meet the data quality criteria for all invasive cancer sites combined (covering approximately 99% of the U.S. population). Registry-specific data quality information is available at <http://www.cdc.gov/cancer/npcr/uscs/pdf/uscs-2012-technical-notes.pdf#nameddest=RegistriesPubCriteria>.

[¶] Rates and counts are not presented for the West Census Region, the Mountain Census Division, or Nevada because data from Nevada are not included in this analysis.

TABLE 4. Reported cancer deaths and age-adjusted death rates,* all cancer sites combined, by geographic division and area — United States, 2012[†]

Area	All races/ethnicities	
	No.	Rate
United States	582,607	166.4
Northeast	110,175	164.1
New England	28,904	162.6
Connecticut	6,681	152.0
Maine	3,226	179.0
Massachusetts	12,864	163.3
New Hampshire	2,660	167.7
Rhode Island	2,148	163.6
Vermont	1,325	164.8
Middle Atlantic	81,271	164.7
New Jersey	16,483	160.3
New York	35,881	159.5
Pennsylvania	28,907	174.8
Midwest	135,511	174.1
East North Central	94,939	176.9
Illinois	24,562	175.5
Indiana	13,368	184.2
Michigan	20,496	174.3
Ohio	25,261	182.1
Wisconsin	11,252	166.1
West North Central	40,572	167.8
Iowa	6,438	167.9
Kansas	5,429	167.7
Minnesota	9,424	155.6
Missouri	12,919	182.0
Nebraska	3,479	164.6
North Dakota	1,253	150.7
South Dakota	1,630	162.0
South	221,435	171.4
South Atlantic	118,858	165.8
Delaware	1,935	176.1
District of Columbia	1,081	178.4
Florida	42,187	157.8
Georgia	16,020	169.6
Maryland	10,524	166.0
North Carolina	18,405	170.5
South Carolina	9,728	179.0
Virginia	14,294	165.3
West Virginia	4,684	191.1

TABLE 4. (Continued) Reported cancer deaths and age-adjusted death rates,* all cancer sites combined, by geographic division and area — United States, 2012[†]

Area	All races/ethnicities	
	No.	Rate
East South Central	40,547	192.0
Alabama	10,274	184.8
Kentucky	10,012	201.2
Mississippi	6,496	200.0
Tennessee	13,765	187.9
West South Central	62,030	170.5
Arkansas	6,540	188.6
Louisiana	9,308	190.5
Oklahoma	8,040	189.6
Texas	38,142	160.6
West	115,486	151.9
Mountain	34,819	147.7
Arizona	11,085	148.3
Colorado	7,306	143.7
Idaho	2,572	152.0
Montana	1,954	154.2
Nevada	4,610	163.8
New Mexico	3,461	148.0
Utah	2,876	128.7
Wyoming	955	154.6
Pacific	80,667	153.7
Alaska	925	169.0
California	57,675	151.0
Hawaii	2,284	134.6
Oregon	7,832	168.3
Washington	11,951	161.8

* Rates are the number of deaths per 100,000 persons and are age-adjusted to the 2000 U.S. standard population (19 age groups – Census P25–1130). For more information, see USCS technical notes (<http://www.cdc.gov/cancer/npcr/uscs/pdf/uscs-2012-technical-notes.pdf>).

[†] Data are from the National Vital Statistics System (NVSS).

TABLE 5. Reported number and rate* of invasive† cancer cases, by primary cancer site and age group — United States, 2012[§]

Cancer site	Age group (yrs)										Total	
	<15		15–24		25–39		40–64		≥65			
	No.	Rate	No.	Rate	No.	Rate	No.	Rate	No.	Rate	No.	Rate (crude)
All cancer sites combined	9,967	16.5	12,634	29	58,709	95.9	620,927	603	826,841	1,932.60	1,529,078	491.5
Oral cavity and pharynx	84	0.1	259	0.6	1,152	1.9	21,140	20.5	17,244	40.3	39,879	12.8
Esophagus	— [¶]	—	—	—	127	0.2	6,383	6.2	9,480	22.2	15,993	5.1
Stomach	—	—	—	—	649	1.1	8,153	7.9	13,764	32.2	22,623	7.3
Colon and rectum	34	0.1	340	0.8	3,526	5.8	51,746	50.2	79,138	185	134,784	43.3
Liver and intrahepatic bile duct	222	0.4	78	0.2	292	0.5	14,698	14.3	12,722	29.7	28,012	9.0
Pancreas	—	—	—	—	391	0.6	14,178	13.8	28,585	66.8	43,213	13.9
Larynx	—	—	—	—	107	0.2	5,966	5.8	6,068	14.2	12,152	3.9
Lung and bronchus	27	0	99	0.2	893	1.5	66,105	64.2	143,704	335.9	210,828	67.8
Melanomas of the skin	107	0.2	897	2.1	5,507	9.0	28,901	28.1	32,341	75.6	67,753	21.8
Female breast	—	—	—	—	9,605	31.5	114,962	218.7	99,396	411.9	224,147	141.8
Cervix	—	—	—	—	2,795	9.2	6,730	12.8	2,368	9.8	12,042	7.6
Corpus and uterus, NOS	—	—	—	—	1,616	5.3	26,341	50.1	21,129	87.6	49,154	31.1
Ovary	102	0.3	348	1.6	1,071	3.5	9,564	18.2	9,700	40.2	20,785	13.2
Prostate	—	—	—	—	77	0.3	77,236	153.2	100,156	536.9	177,489	115.9
Testis	54	0.2	1,425	6.4	4,073	13.2	2,440	4.8	197	1.1	8,189	5.3
Urinary bladder ^{††}	20	0	65	0.1	548	0.9	18,019	17.5	51,322	120.0	69,974	22.5
Kidney and renal pelvis	527	0.9	180	0.4	1,986	3.2	25,557	24.8	26,981	63.1	55,231	17.8
Brain and nervous system	2,103	3.5	968	2.2	2,084	3.4	8,127	7.9	8,208	19.2	21,490	6.9
Thyroid	197	0.3	2,029	4.7	9,545	15.6	24,876	24.2	9,632	22.5	46,279	14.9
Hodgkin lymphoma	340	0.6	1,599	3.7	2,245	3.7	2,614	2.5	1,475	3.4	8,273	2.7
Non-Hodgkin lymphoma	595	1.0	933	2.1	2,899	4.7	23,101	22.4	35,891	83.9	63,419	20.4
Myeloma	—	—	—	—	266	0.4	7,887	7.7	13,663	31.9	21,829	7.0
Leukemias	2,948	4.9	1,163	2.7	2,243	3.7	13,517	13.1	24,525	57.3	44,396	14.3
Mesothelioma	—	—	—	—	36	0.1	666	0.6	2,486	5.8	3,199	1.0
Kaposi Sarcoma	—	—	—	—	321	0.5	448	0.4	269	0.6	1,076	0.3

Abbreviation: NOS = not otherwise specified.

* Rates are the number of cases per 100,000 persons. For more information, see USCS technical notes (<http://www.cdc.gov/cancer/npcr/uscs/pdf/uscs-2012-technical-notes.pdf>).

† Invasive cancer excludes basal and squamous cell carcinomas of the skin except when these occur on the skin of the genital organs, and in situ cancers except urinary bladder. Urinary bladder cancer includes invasive and in situ.

§ Data are compiled from cancer registries that meet the data quality criteria for all invasive cancer sites combined (covering approximately 99% of the U.S. population). Registry-specific data quality information is available at <http://www.cdc.gov/cancer/npcr/uscs/pdf/uscs-2012-technical-notes.pdf#nameddest=RegistriesPubCriteria>.

¶ Counts and rates are suppressed if <16 cases were reported in a specific category. Some counts and rates are suppressed as complementary cell suppression.

TABLE 6. Reported number and rate* of cancer deaths, by primary cancer site and age group — United States, 2012†

Cancer site	Age group (yrs)										Total (all ages)	
	<15		15–24		25–39		40–64		≥65			
	No.	Rate	No.	Rate	No.	Rate	No.	Rate	No.	Rate	No.	Rate (crude)
All cancer sites combined	1,367	2.2	1,574	3.6	7,391	12	168,778	162.5	403,497	935.2	582,607	185.6
Oral cavity and pharynx	— [§]	—	—	—	128	0.2	3,677	3.5	5,100	11.8	8,924	2.8
Esophagus	—	—	—	—	74	0.1	5,358	5.2	9,213	21.4	14,649	4.7
Stomach	—	—	—	—	271	0.4	3,590	3.5	7,309	16.9	11,191	3.6
Colon and rectum	—	—	—	—	775	1.3	15,199	14.6	35,480	82.2	51,516	16.4
Liver and intrahepatic bile duct	32	0.1	34	0.1	186	0.3	9,837	9.5	12,883	29.9	22,927	7.3
Pancreas	—	—	—	—	151	0.2	10,962	10.6	27,676	64.1	38,797	12.4
Larynx	—	—	—	—	18	0	1,374	1.3	2,269	5.3	3,662	1.2
Lung and bronchus	—	—	—	—	430	0.7	43,463	41.8	113,499	263.1	157,423	50.2
Melanomas of the skin	—	—	—	—	300	0.5	3,179	3.1	5,746	13.3	9,251	2.9
Female breast	—	—	—	—	971	3.2	16,104	30.4	24,062	98.9	41,150	25.8
Cervix	—	—	—	—	437	1.4	2,259	4.3	1,369	5.6	4,074	2.6
Corpus and uterus, NOS	—	—	—	—	108	0.4	2,855	5.4	5,944	24.4	8,911	5.6
Ovary	—	—	—	—	176	0.6	4,822	9.1	9,378	38.6	14,404	9.0
Prostate	—	—	—	—	—	—	2,962	5.8	24,271	128.9	27,244	17.6
Testis	—	—	—	—	131	0.4	149	0.3	51	0.3	386	0.2
Urinary bladder	—	—	—	—	35	0.1	2,390	2.3	12,814	29.7	15,245	4.9
Kidney and renal pelvis	30	0	31	0.1	109	0.2	4,134	4.0	9,214	21.4	13,518	4.3
Brain and nervous system	458	0.7	252	0.6	744	1.2	6,177	5.9	7,645	17.7	15,276	4.9
Thyroid	—	—	—	—	23	0	450	0.4	1,212	2.8	1,690	0.5
Hodgkin lymphoma	—	—	—	—	134	0.2	353	0.3	604	1.4	1,130	0.4
Non-Hodgkin lymphoma	36	0.1	85	0.2	344	0.6	4,304	4.1	15,619	36.2	20,388	6.5
Myeloma	—	—	—	—	32	0.1	2,624	2.5	9,164	21.2	11,821	3.8
Leukemias	378	0.6	356	0.8	649	1.1	4,627	4.5	17,299	40.1	23,309	7.4
Mesothelioma	—	—	—	—	16	0	479	0.5	2,190	5.1	2,686	0.9

Abbreviation: NOS = not otherwise specified.

* Rates are the number of deaths per 100,000 persons. For more information, see USCS technical notes (<http://www.cdc.gov/cancer/npcr/uscs/pdf/uscs-2012-technical-notes.pdf>).

† Data are from the National Vital Statistics System (NVSS).

§ Counts and rates are suppressed if <16 deaths were reported in a specific category. Some counts and rates are suppressed as complementary cell suppression.

TABLE 7. Reported number and age-adjusted rate* of invasive† cancer cases, by primary cancer site and sex — United States, 2012[§]

Cancer site	Male		Female		Total	
	No.	Rate	No.	Rate	No.	Rate
All cancer sites combined	767,366	483.0	761,712	411.7	1,529,078	440.3
Oral cavity and pharynx	27,997	16.8	11,882	6.3	39,879	11.2
Lip	1,353	0.9	489	0.3	1,842	0.5
Tongue	8,777	5.2	3,597	1.9	12,374	3.4
Salivary gland	2,404	1.6	1,850	1.0	4,254	1.3
Floor of mouth	1,333	0.8	603	0.3	1,936	0.5
Gum and other mouth	2,915	1.8	2,416	1.3	5,331	1.5
Nasopharynx	1,263	0.8	495	0.3	1,758	0.5
Tonsil	5,977	3.4	1,353	0.7	7,330	2.0
Oropharynx	1,325	0.8	408	0.2	1,733	0.5
Hypopharynx	1,838	1.1	443	0.2	2,281	0.6
Other oral cavity and pharynx	812	0.5	228	0.1	1,040	0.3
Digestive system	151,713	95.6	121,822	63.9	273,535	78.3
Esophagus	12,628	7.8	3,365	1.7	15,993	4.5
Stomach	13,964	9.0	8,659	4.6	22,623	6.6
Small intestine	4,187	2.6	3,707	2.0	7,894	2.3
Colon and rectum	70,204	44.8	64,580	34.1	134,784	38.9
Colon excluding rectum	47,448	30.7	48,514	25.4	95,962	27.8
Rectum and rectosigmoid junction	22,756	14.1	16,066	8.6	38,822	11.1
Anus, anal canal, and anorectum	2,304	1.4	4,034	2.1	6,338	1.8
Liver and Intrahepatic bile duct	20,207	11.8	7,805	4.0	28,012	7.7
Gallbladder	1,221	0.8	2,614	1.4	3,835	1.1
Other biliary	3,246	2.1	2,717	1.4	5,963	1.7
Pancreas	22,101	14.1	21,112	10.9	43,213	12.3
Retroperitoneum	653	0.4	668	0.4	1,321	0.4
Peritoneum, omentum, and mesentery	157	0.1	1,767	0.9	1,924	0.5
Other digestive organs	841	0.5	794	0.4	1,635	0.5
Respiratory system	122,785	78.5	103,148	54.0	225,933	64.7
Nose, nasal cavity, and middle ear	1,376	0.9	898	0.5	2,274	0.7
Larynx	9,565	5.8	2,587	1.3	12,152	3.4
Lung and bronchus	111,395	71.6	99,433	52.1	210,828	60.4
Pleura	60	0	45	0	105	0
Trachea, mediastinum, and other respiratory organs	389	0.3	185	0.1	574	0.2
Bones and joints	1,674	1.1	1,277	0.8	2,951	0.9
Soft tissue including heart	5,881	3.8	4,847	2.8	10,728	3.2
Skin excluding basal and squamous	42,992	27.8	30,189	17.0	73,181	21.5
Melanoma of the skin	39,673	25.5	28,080	15.9	67,753	19.9
Other nonepithelial skin	3,319	2.3	2,109	1.1	5,428	1.6
Male and female breast	NA	NA	NA	NA	226,272	65.6
Female breast	NA	NA	224,147	122.2	NA	NA
Male breast	2,125	1.4	NA	NA	NA	NA
Female genital system	NA	NA	90,303	48.8	NA	NA
Cervix	NA	NA	12,042	7.4	NA	NA
Corpus and uterus, NOS	NA	NA	49,154	25.7	NA	NA
Corpus	NA	NA	47,570	24.9	NA	NA
Uterus, NOS	NA	NA	1,584	0.8	NA	NA
Ovary	NA	NA	20,785	11.3	NA	NA
Vagina	NA	NA	1,296	0.7	NA	NA
Vulva	NA	NA	4,851	2.6	NA	NA
Other female genital organs	NA	NA	2,175	1.2	NA	NA

See table footnotes on page 40.

TABLE 7. (Continued) Reported number and age-adjusted rate* of invasive† cancer cases, by primary cancer site and sex — United States, 2012§

Cancer site	Male		Female		Total	
	No.	Rate	No.	Rate	No.	Rate
Male genital system	187,308	111.8	NA	NA	NA	NA
Prostate	177,489	105.3	NA	NA	NA	NA
Testis	8,189	5.5	NA	NA	NA	NA
Penis	1,283	0.8	NA	NA	NA	NA
Other male genital organs	347	0.2	NA	NA	NA	NA
Urinary system	89,322	58.0	38,781	20.5	128,103	37.0
Urinary bladder	53,006	35.4	16,968	8.7	69,974	20.2
Kidney and renal pelvis	34,459	21.3	20,772	11.2	55,231	15.9
Ureter	1,195	0.8	723	0.4	1,918	0.6
Other urinary organs	662	0.5	318	0.2	980	0.3
Eye and orbit	1,494	1.0	1,239	0.7	2,733	0.8
Brain and other nervous system	11,951	7.6	9,539	5.5	21,490	6.5
Brain	11,263	7.2	8,888	5.1	20,151	6.0
Cranial nerves other nervous system	688	0.5	651	0.4	1,339	0.4
Endocrine system	12,497	7.9	36,097	21.9	48,594	15.0
Thyroid	11,313	7.1	34,966	21.3	46,279	14.3
Other endocrine including thymus	1,184	0.8	1,131	0.7	2,315	0.7
Lymphomas	39,074	25.3	32,618	17.8	71,692	21.1
Hodgkin lymphoma	4,569	3.0	3,704	2.3	8,273	2.6
Non-Hodgkin lymphoma	34,505	22.3	28,914	15.5	63,419	18.5
Myeloma	12,199	7.8	9,630	5.0	21,829	6.3
Leukemias	25,699	16.9	18,697	10.3	44,396	13.2
Acute lymphocytic leukemia	2,732	1.8	2,114	1.4	4,846	1.6
Chronic lymphocytic leukemia	9,004	5.8	5,817	3.0	14,821	4.2
Acute myeloid leukemia	7,646	5.1	6,174	3.4	13,820	4.1
Chronic myeloid leukemia	3,118	2.1	2,425	1.4	5,543	1.7
Other leukemias	3,199	2.1	2,167	1.2	5,366	1.6
Mesothelioma	2,407	1.7	792	0.4	3,199	0.9
Kaposi Sarcoma	951	0.6	125	0.1	1,076	0.3
Miscellaneous	29,297	19.6	26,579	13.7	55,876	16.3

Abbreviations: NA = not applicable; NOS = not otherwise specified.

* Rates are the number of cases per 100,000 persons and are age-adjusted to the 2000 U.S. standard population (19 age groups – Census P25–1130). For more information, see USCS technical notes (<http://www.cdc.gov/cancer/npcr/uscs/pdf/uscs-2012-technical-notes.pdf>).

† Invasive cancer excludes basal and squamous cell carcinomas of the skin except when these occur on the skin of the genital organs, and in situ cancers except urinary bladder. Urinary bladder cancer includes invasive and in situ.

§ Data are compiled from cancer registries that meet the data quality criteria for all invasive cancer sites combined (covering approximately 99% of the U.S. population). Registry-specific data quality information is available at <http://www.cdc.gov/cancer/npcr/uscs/pdf/uscs-2012-technical-notes.pdf#nameddest=RegistriesPubCriteria>.

TABLE 8. Reported number and age-adjusted rate* of cancer deaths, by primary cancer site and sex — United States, 2012†

Cancer site	Male		Female		Total	
	No.	Rate	No.	Rate	No.	Rate
All cancer sites combined	305,661	200.6	276,946	141.9	582,607	166.4
Oral cavity and pharynx	6,263	3.9	2,661	1.3	8,924	2.5
Lip	44	0	27	0	71	0
Tongue	1,488	0.9	736	0.4	2,224	0.6
Salivary gland	581	0.4	288	0.1	869	0.2
Floor of mouth	54	0	21	0	75	0
Gum and other mouth	746	0.5	529	0.3	1,275	0.4
Nasopharynx	454	0.3	212	0.1	666	0.2
Tonsil	714	0.4	165	0.1	879	0.2
Oropharynx	653	0.4	238	0.1	891	0.2
Hypopharynx	268	0.2	88	0	356	0.1
Other oral cavity and pharynx	1,261	0.8	357	0.2	1,618	0.4
Digestive system	83,782	53.4	63,242	32.0	147,024	41.6
Esophagus	11,697	7.3	2,952	1.5	14,649	4.1
Stomach	6,611	4.3	4,580	2.4	11,191	3.2
Small intestine	689	0.5	604	0.3	1,293	0.4
Colon and rectum	26,866	17.6	24,650	12.4	51,516	14.7
Colon excluding rectum	21,383	14.1	20,484	10.3	41,867	12.0
Rectum and rectosigmoid junction	5,483	3.5	4,166	2.1	9,649	2.7
Anus, anal canal, and anorectum	368	0.2	521	0.3	889	0.3
Liver and intrahepatic bile duct	15,563	9.4	7,409	3.8	22,972	6.3
Gallbladder	687	0.5	1,415	0.7	2,102	0.6
Other biliary	739	0.5	780	0.4	1,519	0.4
Pancreas	19,718	12.7	19,079	9.6	38,797	11.0
Retroperitoneum	110	0.1	97	0.1	207	0.1
Peritoneum, omentum, and mesentery	78	0	672	0.3	750	0.2
Other digestive organs	656	0.4	483	0.2	1,139	0.3
Respiratory system	90,091	58.4	71,760	37.0	161,851	46.2
Nose, nasal cavity, and middle ear	285	0.2	173	0.1	458	0.1
Larynx	2,925	1.8	737	0.4	3,662	1.0
Lung and bronchus	86,689	56.2	70,734	36.4	157,423	45.0
Pleura	51	0	31	0	82	0
Trachea, mediastinum, and other respiratory organs	141	0.1	85	0	226	0.1
Bones and joints	818	0.5	581	0.3	1,399	0.4
Soft tissue including heart	2,394	1.6	2,165	1.2	4,559	1.3
Skin excluding basal and squamous	8,329	5.5	4,134	2.1	12,463	3.6
Melanoma of the skin	6,013	4.0	3,238	1.7	9,251	2.7
Other nonepithelial skin	2,316	1.6	896	0.4	3,212	0.9
Male and female breast	NA	NA	NA	NA	41,555	11.8
Female breast	NA	NA	41,150	21.3	NA	NA
Male breast	405	0.3	NA	NA	NA	NA

See table footnotes on page 42.

TABLE 8. (Continued) Reported number and age-adjusted rate* of cancer deaths, by primary cancer site and sex — United States, 2012†

Cancer site	Male		Female		Total	
	No.	Rate	No.	Rate	No.	Rate
Female genital system	NA	NA	29,405	15.2	NA	NA
Cervix	NA	NA	4,074	2.3	NA	NA
Corpus and uterus, NOS	NA	NA	8,911	4.5	NA	NA
Corpus	NA	NA	3,812	1.9	NA	NA
Uterus, NOS	NA	NA	5,099	2.6	NA	NA
Ovary	NA	NA	14,404	7.4	NA	NA
Vagina	NA	NA	429	0.2	NA	NA
Vulva	NA	NA	1,034	0.5	NA	NA
Other female genital organs	NA	NA	553	0.3	NA	NA
Male genital system	27,955	20.0	NA	NA	NA	NA
Prostate	27,244	19.6	NA	NA	NA	NA
Testis	386	0.3	NA	NA	NA	NA
Penis	273	0.2	NA	NA	NA	NA
Other male genital organs	52	0	NA	NA	NA	NA
Urinary system	20,136	13.6	9,458	4.7	29,594	8.5
Urinary bladder	10,886	7.6	4,359	2.1	15,245	4.4
Kidney and renal pelvis	8,772	5.6	4,746	2.4	13,518	3.8
Ureter	212	0.1	166	0.1	378	0.1
Other urinary organs	266	0.2	187	0.1	453	0.1
Eye and orbit	164	0.1	115	0.1	279	0.1
Brain and other nervous system	8,666	5.4	6,610	3.5	15,276	4.4
Endocrine system	1,264	0.8	1,396	0.7	2,660	0.8
Thyroid	775	0.5	915	0.5	1,690	0.5
Other endocrine including thymus	489	0.3	481	0.3	970	0.3
Lymphomas	11,902	8.0	9,616	4.9	21,518	6.2
Hodgkin lymphoma	638	0.4	492	0.3	1,130	0.3
Non-Hodgkin lymphoma	11,264	7.6	9,124	4.6	20,388	5.9
Myeloma	6,338	4.2	5,483	2.8	11,821	3.4
Leukemias	13,466	9.2	9,843	5.1	23,309	6.8
Acute lymphocytic leukemia	810	0.5	598	0.3	1,408	0.4
Chronic lymphocytic leukemia	2,837	2.0	1,761	0.9	4,598	1.3
Acute myeloid leukemia	5,401	3.6	4,083	2.2	9,484	2.8
Chronic myeloid leukemia	546	0.4	471	0.2	1,017	0.3
Other leukemias	3,872	2.7	2,930	1.5	6,802	2.0
Mesothelioma	2,112	1.5	574	0.3	2,686	0.8
Miscellaneous	21,538	14.1	18,738	9.4	40,276	11.5

Abbreviations: NA = not applicable; NOS = not otherwise specified.

* Rates are the number of deaths per 100,000 persons and are age-adjusted to the 2000 U.S. standard population (19 age groups – Census P25–1130). For more information, see USCS technical notes (<http://www.cdc.gov/cancer/npcr/uscs/pdf/uscs-2012-technical-notes.pdf>).

† Data are from the National Vital Statistics System (NVSS).

TABLE 9. Reported number and age-adjusted rate* of invasive† cancer cases, by primary cancer site and race§ —United States, 2012¶

Cancer site	AI/AN§		API§		Black		White		Total	
	No.	Rate	No.	Rate	No.	Rate	No.	Rate	No.	Rate
All cancer sites combined	8,139	269.0	45,364	285.7	165,559	446.1	1,282,703	440.4	1,529,078	440.3
Oral cavity and pharynx	227	6.8	1,267	7.7	3,574	9.1	34,263	11.5	39,879	11.2
Lip	—**	—	—	—	42	0.1	1,718	0.6	1,842	0.5
Tongue	51	1.5	288	1.8	786	2.0	11,082	3.7	12,374	3.4
Salivary gland	18	0.5	180	1.1	393	1.0	3,597	1.3	4,254	1.3
Floor of mouth	—	—	26	0.2	206	0.5	1,666	0.5	1,936	0.5
Gum and other mouth	24	0.8	207	1.3	511	1.4	4,500	1.5	5,331	1.5
Nasopharynx	21	0.6	384	2.2	263	0.7	1,064	0.4	1,758	0.5
Tonsil	45	1.2	81	0.5	625	1.5	6,512	2.2	7,330	2.0
Oropharynx	—	—	20	0.1	241	0.6	1,449	0.5	1,733	0.5
Hypopharynx	21	0.7	54	0.3	390	1.0	1,796	0.6	2,281	0.6
Other oral cavity and pharynx	16	0.5	—	—	117	0.3	879	0.3	1,040	0.3
Digestive system	1,722	58.4	11,016	72.1	34,404	94.8	223,154	75.7	273,535	78.3
Esophagus	73	2.6	303	2.0	1,514	4.1	13,963	4.7	15,993	4.5
Stomach	167	6.1	1,571	10.5	3,532	10.2	17,056	5.8	22,623	6.6
Small intestine	25	0.8	181	1.1	1,301	3.5	6,300	2.2	7,894	2.3
Colon and rectum	835	28.5	4,772	30.8	16,402	45.5	111,041	38.0	134,784	38.9
Colon excluding rectum	547	19.7	3,073	20.3	12,256	34.6	79,012	27.1	95,962	27.8
Rectum and rectosigmoid junction	288	8.8	1,699	10.5	4,146	10.9	32,029	11.0	38,822	11.1
Anus, anal canal, and anorectum	33	0.9	81	0.5	703	1.8	5,450	1.8	6,338	1.8
Liver and Intrahepatic bile duct	280	8.5	2,008	12.7	4,097	10.0	21,223	7.0	28,012	7.7
Gallbladder	48	1.9	204	1.4	558	1.6	2,979	1.0	3,835	1.1
Other biliary	28	0.9	363	2.5	506	1.5	5,023	1.7	5,963	1.7
Pancreas	197	7.0	1,340	9.3	5,293	15.1	36,001	12.1	43,213	12.3
Retroperitoneum	—	—	43	0.3	164	0.4	1,088	0.4	1,321	0.4
Peritoneum, omentum, and mesentery	—	—	70	0.4	135	0.4	1,698	0.6	1,924	0.5
Other digestive organs	—	—	80	0.5	199	0.6	1,332	0.5	1,635	0.5
Respiratory system	1,167	42.3	5,369	36.8	24,484	68.6	193,417	65.2	225,933	64.7
Nose, nasal cavity, and middle ear	—	—	94	0.6	232	0.6	1,908	0.7	2,274	0.7
Larynx	56	1.8	159	1.0	1,706	4.4	10,123	3.3	12,152	3.4
Lung and bronchus	1,096	40.1	5,088	35.0	22,475	63.3	180,823	61.0	210,828	60.4
Pleura	—	—	—	—	—	—	91	0	105	0
Trachea, mediastinum, and other respiratory organs	—	—	26	0.2	61	0.2	472	0.2	574	0.2
Bones and joints	19	0.4	109	0.6	308	0.7	2,458	1.0	2,951	0.9
Soft tissue including heart	72	2.1	356	2.1	1,308	3.4	8,809	3.2	10,728	3.2
Skin excluding basal and squamous	167	5.6	315	2.0	664	1.8	68,552	24.2	73,181	21.5
Melanoma of the skin	141	4.7	197	1.2	332	0.9	63,875	22.6	67,753	19.9
Other nonepithelial skin	26	0.8	118	0.8	332	0.9	4,677	1.6	5,428	1.6
Male and female breast	1,145	36.1	8,416	49.3	25,927	68.5	188,474	65.5	226,272	65.6
Female breast	1,143	67.8	8,357	89.7	25,630	120.1	186,726	123.3	224,147	122.2
Male breast	—	—	59	0.8	297	2.0	1,748	1.3	2,125	1.4
Female genital system	598	33.9	3,279	34.9	10,015	46.9	75,241	49.4	90,303	48.8
Cervix	119	6.3	576	6.1	1,907	9.0	9,174	7.1	12,042	7.4
Corpus and uterus, NOS	290	15.9	1,704	17.9	5,334	24.7	41,235	26.1	49,154	25.7
Corpus	281	15.3	1,648	17.3	4,995	23.1	40,082	25.3	47,570	24.9
Uterus, NOS	—	—	56	0.6	339	1.6	1,153	0.7	1,584	0.8
Ovary	138	8.4	810	8.7	1,959	9.3	17,671	11.6	20,785	11.3
Vagina	—	—	37	0.4	199	1.0	1,031	0.7	1,296	0.7
Vulva	24	1.5	66	0.8	413	2.0	4,285	2.7	4,851	2.6
Other female genital organs	16	1.0	86	1.0	203	1.0	1,845	1.2	2,175	1.2

See table footnotes on page 44.

TABLE 9. (Continued) Reported number and age-adjusted rate* of invasive† cancer cases, by primary cancer site and race§ —United States, 2012¶

Cancer site	AI/AN [§]		API [§]		Black		White		Total	
	No.	Rate	No.	Rate	No.	Rate	No.	Rate	No.	Rate
Male genital system	832	60.1	3,975	57.1	28,484	172.2	146,244	103.0	187,308	111.8
Prostate	750	56.4	3,755	54.5	28,003	169.4	137,488	95.6	177,489	105.3
Testis	76	3.2	164	1.8	305	1.5	7,410	6.3	8,189	5.5
Penis	—	—	37	0.6	142	1.0	1,070	0.8	1,283	0.8
Other male genital organs	—	—	19	0.3	34	0.2	276	0.2	347	0.2
Urinary system	710	23.9	2,443	16.4	10,399	28.8	112,781	38.4	128,103	37.0
Urinary bladder	222	8.6	1,208	8.6	3,778	11.3	63,564	21.5	69,974	20.2
Kidney and renal pelvis	480	15.0	1,165	7.3	6,420	16.9	46,625	16.0	55,231	15.9
Ureter	—	—	53	0.4	80	0.2	1,769	0.6	1,918	0.6
Other urinary organs	—	—	17	0.1	121	0.3	823	0.3	980	0.3
Eye and orbit	—	—	36	0.2	93	0.2	2,513	0.9	2,733	0.8
Brain and other nervous system	114	3.2	622	3.6	1,615	4.1	18,858	6.9	21,490	6.5
Brain	107	3.1	576	3.4	1,465	3.7	17,765	6.5	20,151	6.0
Cranial nerves other nervous system	—	—	46	0.3	150	0.4	1,093	0.4	1,339	0.4
Endocrine system	285	7.4	2,822	15.6	3,893	9.9	40,662	15.6	48,594	15.0
Thyroid	275	7.2	2,677	14.8	3,529	8.9	38,888	14.9	46,279	14.3
Other endocrine including thymus	—	—	145	0.8	364	0.9	1,774	0.7	2,315	0.7
Lymphomas	340	11.6	2,154	13.7	6,185	16.1	61,671	21.7	71,692	21.1
Hodgkin lymphoma	32	0.9	212	1.1	1,096	2.6	6,787	2.7	8,273	2.6
Non-Hodgkin lymphoma	308	10.8	1,942	12.5	5,089	13.5	54,884	19.0	63,419	18.5
Myeloma	116	4.1	491	3.2	4,392	12.4	16,480	5.6	21,829	6.3
Leukemias	252	7.9	1,200	7.5	3,838	10.5	37,968	13.5	44,396	13.2
Acute lymphocytic leukemia	51	1.2	242	1.4	440	1.0	4,011	1.7	4,846	1.6
Chronic lymphocytic leukemia	51	1.9	172	1.1	1,066	3.1	12,921	4.3	14,821	4.2
Acute myeloid leukemia	86	2.8	495	3.2	1,294	3.6	11,808	4.2	13,820	4.1
Chronic myeloid leukemia	36	1.2	177	1.1	564	1.5	4,631	1.7	5,543	1.7
Other leukemias	28	0.8	114	0.7	474	1.3	4,597	1.6	5,366	1.6
Mesothelioma	—	—	35	0.3	162	0.5	2,963	1.0	3,199	0.9
Kaposi Sarcoma	—	—	27	0.1	320	0.8	648	0.3	1,076	0.3
Miscellaneous	342	12.9	1,432	10.0	5,494	16.0	47,547	16.2	55,876	16.3

Abbreviations: AI/AN = American Indian/Alaska Native; A/PI = Asian/Pacific Islander; NOS = not otherwise specified.

* Rates are the number of cases per 100,000 persons and are age-adjusted to the 2000 U.S. standard population (19 age groups – Census P25–1130). For more information, see USCS technical notes (<http://www.cdc.gov/cancer/npcr/uscs/pdf/uscs-2012-technical-notes.pdf>).

† Invasive cancer excludes basal and squamous cell carcinomas of the skin except when these occur on the skin of the genital organs, and in situ cancers except urinary bladder. Urinary bladder cancer includes invasive and in situ.

§ Rates are not presented for persons of unknown or other race, therefore categories do not sum to total. Data for specified racial populations other than white and black should be interpreted with caution. For more information, see USCS technical notes (<http://www.cdc.gov/cancer/npcr/uscs/pdf/uscs-2012-technical-notes.pdf#nameddest=IntRaceEthnicityData>).

¶ Data are compiled from cancer registries that meet the data quality criteria for all invasive cancer sites combined (covering approximately 99% of the U.S. population). Registry-specific data quality information is available at <http://www.cdc.gov/cancer/npcr/uscs/pdf/uscs-2012-technical-notes.pdf#nameddest=RegistriesPubCriteria>.

** Counts and rates are suppressed if <16 cases were reported.

TABLE 10. Reported number and age-adjusted rate* of cancer deaths, by primary cancer site and race† — United States, 2012‡

Cancer site	AI/AN†		API†		Black		White		Total	
	No.	Rate	No.	Rate	No.	Rate	No.	Rate	No.	Rate
All cancer sites combined	3,018	112.5	15,339	104.2	67,374	194.4	496,876	166.4	582,607	166.4
Oral cavity and pharynx	48	1.6	320	2.0	1,074	2.9	7,482	2.5	8,924	2.5
Lip	— [§]	—	—	—	—	—	68	0	71	0
Tongue	—	—	58	0.4	200	0.5	1,956	0.6	2,224	0.6
Salivary gland	—	—	19	0.1	67	0.2	781	0.3	869	0.2
Floor of mouth	—	—	—	—	—	—	71	0	75	0
Gum and other mouth	—	—	41	0.3	118	0.3	1,108	0.4	1,275	0.4
Nasopharynx	—	—	141	0.8	100	0.3	419	0.1	666	0.2
Tonsil	—	—	—	—	108	0.3	753	0.2	879	0.2
Oropharynx	—	—	17	0.1	146	0.4	723	0.2	891	0.2
Hypopharynx	—	—	—	—	50	0.1	297	0.1	356	0.1
Other oral cavity and pharynx	—	—	21	0.1	281	0.8	1,306	0.4	1,618	0.4
Digestive system	908	33.1	5,511	37.5	18,930	53.9	121,675	40.5	147,024	41.6
Esophagus	67	2.5	241	1.6	1,387	3.7	12,954	4.3	14,649	4.1
Stomach	100	3.9	832	5.7	2,001	5.9	8,258	2.8	11,191	3.2
Small intestine	—	—	32	0.2	199	0.5	1,060	0.4	1,293	0.4
Colon and rectum	301	11.2	1,578	10.8	6,861	19.9	42,776	14.3	51,516	14.7
Colon excluding rectum	246	9.2	1,270	8.8	5,727	16.8	34,624	11.6	41,867	12.0
Rectum and rectosigmoid junction	55	2.0	308	2.0	1,134	3.2	8,152	2.7	9,649	2.7
Anus, anal canal, and anorectum	—	—	—	—	99	0.3	778	0.3	889	0.3
Liver and intrahepatic bile duct	207	7.0	1,499	9.9	3,190	8.3	18,076	5.9	22,972	6.3
Gallbladder	24	1.1	86	0.6	285	0.8	1,707	0.6	2,102	0.6
Other biliary	—	—	61	0.4	121	0.4	1,327	0.4	1,519	0.4
Pancreas	180	6.5	1,113	7.9	4,595	13.4	32,909	10.9	38,797	11.0
Retroperitoneum	—	—	—	—	16	0	184	0.1	207	0.1
Peritoneum, omentum, and mesentery	—	—	18	0.1	50	0.1	679	0.2	750	0.2
Other digestive organs	—	—	37	0.3	126	0.4	967	0.3	1,139	0.3
Respiratory system	818	31.1	3,528	24.6	17,484	50.3	140,021	46.9	161,851	46.2
Nose, nasal cavity, and middle ear	—	—	19	0.1	40	0.1	397	0.1	458	0.1
Larynx	18	0.6	56	0.4	628	1.7	2,960	1.0	3,662	1.0
Lung and bronchus	796	30.4	3,441	24.0	16,780	48.4	136,406	45.7	157,423	45.0
Pleura	—	—	—	—	—	—	75	0	82	0
Trachea, mediastinum, and other respiratory organs	—	—	—	—	31	0.1	183	0.1	226	0.1
Bones and joints	—	—	42	0.3	165	0.4	1,186	0.4	1,399	0.4
Soft tissue including heart	35	1.1	147	0.9	567	1.5	3,810	1.3	4,559	1.3
Skin excluding basal and squamous	32	1.3	90	0.6	273	0.8	12,068	4.1	12,463	3.6
Melanoma of the skin	19	0.8	58	0.4	138	0.4	9,036	3.1	9,251	2.7
Other nonepithelial skin	—	—	32	0.2	135	0.4	3,032	1.0	3,212	0.9
Male and female breast	173	5.9	1,036	6.3	6,246	17.2	34,100	11.4	41,555	11.8
Female breast	172	10.8	1,032	11.3	6,186	29.4	33,760	20.7	41,150	21.3
Male breast	—	—	—	—	60	0.4	340	0.3	405	0.3

See table footnotes on page 46.

TABLE 10. (Continued) Reported number and age-adjusted rate* of cancer deaths, by primary cancer site and race† — United States, 2012§

Cancer site	AI/AN†		API†		Black		White		Total	
	No.	Rate	No.	Rate	No.	Rate	No.	Rate	No.	Rate
Female genital system	171	11.1	858	9.6	3,984	19.4	24,392	15.0	29,405	15.2
Cervix	41	2.3	154	1.7	780	3.7	3,099	2.1	4,074	2.3
Corpus and uterus, NOS	47	3.1	280	3.2	1,666	8.2	6,918	4.1	8,911	4.5
Corpus	21	1.2	131	1.5	646	3.2	3,014	1.8	3,812	1.9
Uterus, NOS	26	1.8	149	1.7	1,020	5.0	3,904	2.3	5,099	2.6
Ovary	74	5.0	385	4.3	1,359	6.6	12,586	7.7	14,404	7.4
Vagina	—	—	—	—	56	0.3	360	0.2	429	0.2
Vulva	—	—	—	—	64	0.3	952	0.6	1,034	0.5
Other female genital organs	—	—	16	0.2	59	0.3	477	0.3	553	0.3
Male genital system	134	14.4	441	8.6	4,655	42.1	22,725	18.6	27,955	20.0
Prostate	127	14.0	429	8.4	4,595	41.8	22,093	18.1	27,244	19.6
Testis	—	—	—	—	26	0.1	347	0.3	386	0.3
Penis	—	—	—	—	27	0.2	241	0.2	273	0.2
Other male genital organs	—	—	—	—	—	—	44	0	52	0
Urinary system	148	5.5	507	3.7	2,411	7.2	26,528	8.8	29,594	8.5
Urinary bladder	33	1.3	232	1.8	1,090	3.5	13,890	4.6	15,245	4.4
Kidney and renal pelvis	107	3.9	256	1.7	1,267	3.6	11,888	4.0	13,518	3.8
Ureter	—	—	—	—	—	—	351	0.1	378	0.1
Other urinary organs	—	—	—	—	41	0.1	399	0.1	453	0.1
Eye and orbit	—	—	—	—	—	—	260	0.1	279	0.1
Brain and other nervous system	63	2.0	336	2.1	1,009	2.7	13,868	4.8	15,276	4.4
Endocrine system	—	—	134	0.9	311	0.9	2,208	0.8	2,660	0.8
Thyroid	—	—	90	0.6	165	0.5	1,430	0.5	1,690	0.5
Other endocrine including thymus	—	—	44	0.3	146	0.4	778	0.3	970	0.3
Lymphomas	75	3.2	587	4.1	1,595	4.6	19,261	6.5	21,518	6.2
Hodgkin lymphoma	—	—	20	0.1	133	0.3	974	0.3	1,130	0.3
Non-Hodgkin lymphoma	72	3.2	567	4.0	1,462	4.3	18,287	6.2	20,388	5.9
Myeloma	48	2.0	241	1.7	2,085	6.3	9,447	3.2	11,821	3.4
Leukemias	96	3.4	599	4.1	1,965	5.8	20,649	7.1	23,309	6.8
Acute lymphocytic leukemia	—	—	53	0.3	121	0.3	1,222	0.5	1,408	0.4
Chronic lymphocytic leukemia	—	—	38	0.3	365	1.2	4,183	1.4	4,598	1.3
Acute myeloid leukemia	44	1.5	323	2.2	768	2.2	8,349	2.9	9,484	2.8
Chronic myeloid leukemia	—	—	21	0.1	108	0.3	885	0.3	1,017	0.3
Other leukemias	25	1.0	164	1.2	603	1.8	6,010	2.0	6,802	2.0
Mesothelioma	—	—	28	0.2	125	0.4	2,519	0.9	2,686	0.8
Miscellaneous	236	8.9	930	6.5	4,471	12.9	34,639	11.5	40,276	11.5

Abbreviations: AI/AN = American Indian/Alaska Native; A/PI = Asian/Pacific Islander; NOS = not otherwise specified.

* Rates are the number of deaths per 100,000 persons and are age-adjusted to the 2000 U.S. standard population (19 age groups – Census P25–1130). For more information, see USCS technical notes (<http://www.cdc.gov/cancer/npcr/uscs/pdf/uscs-2012-technical-notes.pdf>).

† Data for specified racial populations other than white and black should be interpreted with caution. For more information, see USCS technical notes (<http://www.cdc.gov/cancer/npcr/uscs/pdf/uscs-2012-technical-notes.pdf#nameddest=IntRaceEthnicityData>).

§ Data are from the National Vital Statistics System (NVSS).

¶ Counts and rates are suppressed if <16 deaths were reported.

TABLE 11. Reported number and age-adjusted rate* of invasive[†] cancer cases, by primary cancer site and ethnicity[§] — United States, 2012[¶]

Cancer site	Hispanic		Non-Hispanic		Total	
	No.	Rate	No.	Rate	No.	Rate
All cancer sites combined	111,815	340.5	1,417,061	451.4	1,529,078	440.3
Oral cavity and pharynx	2,318	6.9	37,561	11.7	39,879	11.2
Lip	87	0.3	1,755	0.6	1,842	0.5
Tongue	629	1.9	11,745	3.6	12,374	3.4
Salivary gland	324	0.9	3,930	1.3	4,254	1.3
Floor of mouth	90	0.3	1,846	0.6	1,936	0.5
Gum and other mouth	366	1.2	4,965	1.6	5,331	1.5
Nasopharynx	148	0.4	1,610	0.5	1,758	0.5
Tonsil	364	1.0	6,966	2.1	7,330	2.0
Oropharynx	97	0.3	1,636	0.5	1,733	0.5
Hypopharynx	139	0.4	2,142	0.6	2,281	0.6
Other oral cavity and pharynx	74	0.2	966	0.3	1,040	0.3
Digestive system	24,117	78.3	249,370	78.5	273,535	78.3
Esophagus	847	2.8	15,143	4.7	15,993	4.5
Stomach	2,926	9.5	19,694	6.2	22,623	6.6
Small intestine	561	1.7	7,333	2.3	7,894	2.3
Colon and rectum	10,585	34.0	124,186	39.5	134,784	38.9
Colon excluding rectum	7,158	23.8	88,791	28.3	95,962	27.8
Rectum and rectosigmoid junction	3,427	10.2	35,395	11.2	38,822	11.1
Anus, anal canal, and anorectum	449	1.4	5,888	1.9	6,338	1.8
Liver and Intrahepatic bile duct	4,066	12.7	23,937	7.2	28,012	7.7
Gallbladder	539	1.9	3,295	1.0	3,835	1.1
Other biliary	650	2.2	5,313	1.7	5,963	1.7
Pancreas	3,079	10.7	40,116	12.5	43,213	12.3
Retroperitoneum	128	0.3	1,193	0.4	1,321	0.4
Peritoneum, omentum, and mesentery	134	0.4	1,790	0.6	1,924	0.5
Other digestive organs	153	0.5	1,482	0.5	1,635	0.5
Respiratory system	9,655	34.4	216,231	67.5	225,933	64.7
Nose, nasal cavity, and middle ear	191	0.6	2,083	0.7	2,274	0.7
Larynx	736	2.4	11,413	3.5	12,152	3.4
Lung and bronchus	8,648	31.2	202,136	63.2	210,828	60.4
Pleura	—**	—	101	0	—	0
Trachea, mediastinum, and other respiratory organs	76	0.1	498	0.2	574	0.2
Bones and joints	415	0.9	2,536	0.9	2,951	0.9
Soft tissue including heart	1,092	2.8	9,636	3.3	10,728	3.2
Skin excluding basal and squamous	1,726	5.1	71,452	23.6	73,181	21.5
Melanoma of the skin	1,423	4.2	66,328	21.9	67,753	19.9
Other nonepithelial skin	303	0.9	5,124	1.7	5,428	1.6
Male and female breast	17,129	49.0	209,135	67.6	226,272	65.6
Female breast	17,014	91.3	207,125	125.9	224,147	122.2
Male breast	115	0.8	2,010	1.4	2,125	1.4
Female genital system	8,557	44.5	81,736	49.1	90,303	48.8
Cervix	1,998	9.5	10,044	7.1	12,042	7.4
Corpus and uterus, NOS	4,135	21.8	45,015	26.0	49,154	25.7
Corpus	3,976	20.9	43,593	25.2	47,570	24.9
Uterus, NOS	159	0.9	1,422	0.8	1,584	0.8
Ovary	1,885	10.0	18,894	11.4	20,785	11.3
Vagina	108	0.6	1,188	0.7	1,296	0.7
Vulva	268	1.7	4,583	2.7	4,851	2.6
Other female genital organs	163	0.9	2,012	1.2	2,175	1.2

See table footnotes on page 48.

TABLE 11. (Continued) Reported number and age-adjusted rate* of invasive[†] cancer cases, by primary cancer site and ethnicity[§] — United States, 2012[¶]

Cancer site	Hispanic		Non-Hispanic		Total	
	No.	Rate	No.	Rate	No.	Rate
Male genital system	13,653	95.7	173,628	113.7	187,308	111.8
Prostate	12,121	89.8	165,342	107.0	177,489	105.3
Testis	1,311	4.4	6,877	5.7	8,189	5.5
Penis	204	1.4	1,079	0.8	1,283	0.8
Other male genital organs	17	0.1	330	0.2	347	0.2
Urinary system	8,518	27.4	119,571	37.9	128,103	37.0
Urinary bladder	3,041	11.1	66,925	21.1	69,974	20.2
Kidney and renal pelvis	5,350	15.9	49,875	15.9	55,231	15.9
Ureter	80	0.3	1,838	0.6	1,918	0.6
Other urinary organs	47	0.2	933	0.3	980	0.3
Eye and orbit	206	0.5	2,527	0.9	2,733	0.8
Brain and other nervous system	1,990	4.9	19,497	6.7	21,490	6.5
Brain	1,846	4.6	18,302	6.3	20,151	6.0
Cranial nerves other nervous system	144	0.3	1,195	0.5	1,339	0.4
Endocrine system	5,806	13.7	42,783	15.4	48,594	15.0
Thyroid	5,555	13.1	40,722	14.6	46,279	14.3
Other endocrine including thymus	251	0.6	2,061	0.7	2,315	0.7
Lymphomas	6,462	18.9	65,222	21.5	71,692	21.1
Hodgkin lymphoma	1,029	2.3	7,244	2.7	8,273	2.6
Non-Hodgkin lymphoma	5,433	16.6	57,978	18.7	63,419	18.5
Myeloma	1,869	6.2	19,955	6.3	21,829	6.3
Leukemias	3,988	10.3	40,403	13.4	44,396	13.2
Acute lymphocytic leukemia	1,264	2.2	3,582	1.5	4,846	1.6
Chronic lymphocytic leukemia	542	1.9	14,278	4.5	14,821	4.2
Acute myeloid leukemia	1,272	3.6	12,546	4.1	13,820	4.1
Chronic myeloid leukemia	490	1.4	5,051	1.7	5,543	1.7
Other leukemias	420	1.2	4,946	1.6	5,366	1.6
Mesothelioma	200	0.7	2,997	1.0	3,199	0.9
Kaposi Sarcoma	198	0.5	878	0.3	1,076	0.3
Miscellaneous	3,916	13.6	51,943	16.5	55,876	16.3

Abbreviation: NOS = not otherwise specified.

* Rates are the number of cases per 100,000 persons and are age-adjusted to the 2000 U.S. standard population (19 age groups – Census P25–1130). For more information, see USCS technical notes (<http://www.cdc.gov/cancer/npcr/uscs/pdf/uscs-2012-technical-notes.pdf>).

[†] Invasive cancer excludes basal and squamous cell carcinomas of the skin except when these occur on the skin of the genital organs, and in situ cancers except urinary bladder. Urinary bladder cancer includes invasive and in situ.

[§] Rates and counts are not presented for persons of unknown ethnicity, therefore categories do not sum to total. Data for specified ethnic populations should be interpreted with caution. For more information, see USCS technical notes <http://www.cdc.gov/cancer/npcr/uscs/pdf/uscs-2012-technical-notes.pdf#nameddest=IntRaceEthnicityData>.

[¶] Data are compiled from cancer registries that meet the data quality criteria for all invasive cancer sites combined (covering approximately 99% of the U.S. population). Registry-specific data quality information is available at <http://www.cdc.gov/cancer/npcr/uscs/pdf/uscs-2012-technical-notes.pdf#nameddest=RegistriesPubCriteria>.

** Counts and rates are suppressed if <16 cases were reported. Some counts and rates are suppressed as complementary cell suppression.

TABLE 12. Reported number and age-adjusted rate* of cancer deaths, by primary cancer site and ethnicity† — United States, 2012[§]

Cancer site	Hispanic [§]		Non-Hispanic		Total	
	No.	Rate	No.	Rate	No.	Rate
All cancer sites combined	34,146	117.8	547,027	170.4	582,607	166.4
Oral cavity and pharynx	476	1.6	8,421	2.6	8,924	2.5
Lip	— [¶]	—	65	0	71	0
Tongue	118	0.4	2,099	0.6	2,224	0.6
Salivary gland	48	0.2	819	0.3	869	0.2
Floor of mouth	—	—	68	0	75	0
Gum and other mouth	66	0.2	1,206	0.4	1,275	0.4
Nasopharynx	37	0.1	627	0.2	666	0.2
Tonsil	39	0.1	835	0.3	879	0.2
Oropharynx	43	0.1	848	0.3	891	0.2
Hypopharynx	25	0.1	329	0.1	356	0.1
Other oral cavity and pharynx	87	0.3	1,525	0.5	1,618	0.4
Digestive system	11,382	39.3	135,287	41.8	147,024	41.6
Esophagus	621	2.1	13,995	4.3	14,649	4.1
Stomach	1,590	5.2	9,570	3.0	11,191	3.2
Small intestine	68	0.2	1,221	0.4	1,293	0.4
Colon and rectum	3,349	11.8	48,034	15.0	51,516	14.7
Colon excluding rectum	2,737	9.7	39,017	12.2	41,867	12.0
Rectum and rectosigmoid junction	612	2.0	9,017	2.8	9,649	2.7
Anus, anal canal, and anorectum	40	0.1	845	0.3	889	0.3
Liver and intrahepatic bile duct	2,780	9.3	20,135	6.1	22,972	6.3
Gallbladder	262	1.0	1,833	0.6	2,102	0.6
Other biliary	136	0.5	1,383	0.4	1,519	0.4
Pancreas	2,407	8.6	36,307	11.2	38,797	11.0
Retroperitoneum	16	0	190	0.1	207	0.1
Peritoneum, omentum, and mesentery	46	0.1	703	0.2	750	0.2
Other digestive organs	67	0.2	1,071	0.3	1,139	0.3
Respiratory system	5,503	20.4	155,925	48.4	161,851	46.2
Nose, nasal cavity, and middle ear	37	0.1	420	0.1	458	0.1
Larynx	214	0.8	3,433	1.0	3,662	1.0
Lung and bronchus	5,225	19.4	151,793	47.1	157,423	45.0
Pleura	—	—	77	0	82	0
Trachea, mediastinum, and other respiratory organs	22	0.1	202	0.1	226	0.1
Bones and joints	136	0.3	1,262	0.4	1,399	0.4
Soft tissue including heart	390	1.1	4,155	1.4	4,559	1.3
Skin excluding basal and squamous	350	1.2	12,085	3.8	12,463	3.6
Melanoma of the skin	224	0.7	9,010	2.9	9,251	2.7
Other nonepithelial skin	126	0.5	3,075	0.9	3,212	0.9
Male and female breast	2,627	8.1	38,826	12.1	41,555	11.8
Female breast	2,613	14.7	38,436	21.9	41,150	21.3
Male breast	—	—	390	0.3	405	0.3

See table footnotes on page 50.

TABLE 12. (Continued) Reported number and age-adjusted rate* of cancer deaths, by primary cancer site and ethnicity† — United States, 2012§

Cancer site	Hispanic [§]		Non-Hispanic		Total	
	No.	Rate	No.	Rate	No.	Rate
Female genital system	2,212	12.8	27,113	15.4	29,405	15.2
Cervix	520	2.7	3,536	2.2	4,074	2.3
Corpus and uterus, NOS	619	3.7	8,269	4.6	8,911	4.5
Corpus	245	1.5	3,555	2.0	3,812	1.9
Uterus, NOS	374	2.2	4,714	2.6	5,099	2.6
Ovary	963	5.8	13,407	7.5	14,404	7.4
Vagina	32	0.2	396	0.2	429	0.2
Vulva	45	0.3	986	0.5	1,034	0.5
Other female genital organs	33	0.2	519	0.3	553	0.3
Male genital system	1,706	17.1	26,189	20.2	27,955	20.0
Prostate	1,592	16.5	25,595	19.8	27,244	19.6
Testis	75	0.2	309	0.2	386	0.3
Penis	36	0.3	237	0.2	273	0.2
Other male genital organs	—	—	48	0	52	0
Urinary system	1,660	6.0	27,875	8.6	29,594	8.5
Urinary bladder	584	2.3	14,630	4.5	15,245	4.4
Kidney and renal pelvis	1,042	3.6	12,451	3.8	13,518	3.8
Ureter	—	—	362	0.1	378	0.1
Other urinary organs	19	0.1	432	0.1	453	0.1
Eye and orbit	18	0.1	260	0.1	279	0.1
Brain and other nervous system	1,049	3.0	14,194	4.6	15,276	4.4
Endocrine system	248	0.8	2,409	0.8	2,660	0.8
Thyroid	168	0.6	1,521	0.5	1,690	0.5
Other endocrine including thymus	80	0.2	888	0.3	970	0.3
Lymphomas	1,551	5.4	19,914	6.3	21,518	6.2
Hodgkin lymphoma	123	0.4	1,005	0.3	1,130	0.3
Non-Hodgkin lymphoma	1,428	5.0	18,909	6.0	20,388	5.9
Myeloma	782	2.9	11,019	3.4	11,821	3.4
Leukemias	1,603	5.0	21,661	6.9	23,309	6.8
Acute lymphocytic leukemia	325	0.7	1,080	0.4	1,408	0.4
Chronic lymphocytic leukemia	125	0.5	4,463	1.4	4,598	1.3
Acute myeloid leukemia	582	1.9	8,885	2.9	9,484	2.8
Chronic myeloid leukemia	76	0.3	936	0.3	1,017	0.3
Other leukemias	495	1.7	6,297	2.0	6,802	2.0
Mesothelioma	132	0.5	2,545	0.8	2,686	0.8
Miscellaneous	2,313	8.2	37,842	11.7	40,276	11.5

Abbreviation: NOS = not otherwise specified.

* Rates are the number of deaths per 100,000 persons and are age-adjusted to the 2000 U.S. standard population (19 age groups – Census P25–1130). For more information, see USCS technical notes (<http://www.cdc.gov/cancer/npcr/uscs/pdf/uscs-2012-technical-notes.pdf>).

† Data are from the National Vital Statistics System (NVSS).

§ Data for specified ethnic populations should be interpreted with caution. For more information, see USCS technical notes (<http://www.cdc.gov/cancer/npcr/uscs/pdf/uscs-2012-technical-notes.pdf#nameddest=IntRaceEthnicityData>).

¶ Counts and rates are suppressed if <16 deaths were reported.

TABLE 13. Reported number of invasive* cancer cases by primary cancer site and year — United States, 1999–2012†

Cancer site	1999	2000	2001	2002	2003	2004	2005	2006	2007	2008	2009	2010	2011	2012
All cancer sites combined	1,227,562	1,249,559	1,273,017	1,285,618	1,279,510	1,296,877	1,318,814	1,349,590	1,387,116	1,402,567	1,414,111	1,403,565	1,424,734	1,399,978
Oral cavity and pharynx	27,491	27,954	28,236	28,904	29,506	29,980	30,315	31,314	32,798	34,214	34,619	35,395	36,790	36,990
Lip	2,444	2,393	2,309	2,333	2,041	1,961	1,859	1,880	1,883	1,867	1,832	1,952	1,886	1,725
Tongue	6,640	6,859	7,017	7,478	7,737	8,091	8,298	8,725	9,399	10,100	10,224	10,282	11,118	11,476
Salivary gland	2,982	3,147	3,180	3,220	3,305	3,357	3,470	3,599	3,628	3,754	3,774	3,762	3,792	3,986
Floor of mouth	2,074	2,053	2,075	2,018	1,940	1,916	1,827	1,944	1,923	1,934	1,920	1,924	1,838	1,787
Gum and other mouth	4,357	4,197	4,312	4,236	4,387	4,348	4,338	4,372	4,564	4,759	4,663	4,846	4,927	4,915
Nasopharynx	1,471	1,527	1,416	1,535	1,622	1,559	1,618	1,565	1,722	1,713	1,601	1,660	1,635	1,640
Tonsil	3,409	3,584	3,780	4,032	4,316	4,570	4,756	5,068	5,307	5,730	6,263	6,348	6,754	6,786
Oropharynx	995	1,060	1,106	1,110	1,277	1,295	1,298	1,404	1,416	1,479	1,460	1,666	1,704	1,598
Hypopharynx	2,187	2,153	2,085	2,066	2,163	2,131	2,120	2,034	2,131	2,082	2,127	2,074	2,124	2,106
Other oral cavity and pharynx	932	981	956	876	718	752	731	723	825	796	755	881	1,012	971
Digestive system	232,437	235,790	238,113	239,050	242,294	243,671	244,545	246,111	249,358	252,542	252,284	250,837	254,183	254,508
Esophagus	12,691	12,886	13,082	13,105	13,606	14,152	14,058	14,522	14,535	15,092	15,220	14,598	14,998	14,884
Stomach	19,350	19,227	19,184	19,418	19,689	19,653	19,392	19,400	19,827	19,674	20,036	20,925	21,054	21,168
Small intestine	4,312	4,314	4,614	4,882	5,038	5,379	5,593	5,974	6,179	6,502	6,706	7,124	7,188	7,336
Colon and rectum	142,816	144,059	143,905	142,685	142,037	140,094	138,690	136,944	136,405	135,443	131,492	127,515	127,219	124,944
Colon excluding rectum	104,182	105,255	105,235	104,439	103,760	102,098	100,503	99,464	98,772	98,055	94,444	91,344	91,134	88,810
Rectum and rectosigmoid junction	38,634	38,804	38,670	38,246	38,277	37,996	38,187	37,480	37,633	37,388	37,048	36,171	36,085	36,134
Anus, anal canal, and anorectum	3,467	3,541	3,626	3,801	4,198	4,314	4,506	4,503	4,967	5,230	5,614	5,442	5,694	5,876
Liver and Intrahepatic bile duct	12,470	13,415	13,502	14,451	15,221	16,460	17,381	18,426	20,097	21,264	23,130	23,862	25,028	26,279
Gallbladder	3,102	2,992	3,149	2,980	3,122	3,140	3,231	3,279	3,314	3,330	3,550	3,538	3,607	3,614
Other biliary	3,356	3,544	4,221	4,401	4,565	4,624	4,677	4,862	4,874	5,141	5,349	5,437	5,635	5,603
Pancreas	28,024	28,801	29,421	29,804	31,085	31,922	32,985	34,137	34,961	36,519	36,950	38,112	39,242	40,229
Retroperitoneum	990	963	1,033	1,062	1,038	1,057	1,125	1,094	1,114	1,136	1,135	1,151	1,227	1,257
Peritoneum, omentum, and mesentery	1,101	1,188	1,391	1,472	1,646	1,818	1,813	1,751	1,895	1,981	1,838	1,808	1,835	1,791
Other digestive organs	758	860	985	989	1,049	1,058	1,094	1,219	1,190	1,230	1,264	1,325	1,456	1,527
Respiratory system	193,612	194,368	196,473	198,631	201,452	202,402	206,455	207,257	208,946	211,173	211,521	208,570	207,967	207,627
Nose, nasal cavity, and middle ear	1,805	1,799	1,765	1,870	1,815	1,928	1,966	1,953	2,116	2,080	2,104	2,005	2,045	2,126
Larynx	11,696	11,513	11,409	11,081	11,202	11,427	11,373	11,457	11,507	11,489	11,499	11,627	11,400	11,106
Lung and bronchus	179,444	180,405	182,729	185,079	187,813	188,372	192,465	193,219	194,673	196,903	197,245	194,261	193,906	193,768
Pleura	104	101	77	97	92	98	93	83	102	99	104	103	92	100
Trachea, mediastinum, and other respiratory organs	563	550	493	504	530	577	558	545	548	602	569	574	524	527
Bones and joints	2,472	2,462	2,627	2,645	2,577	2,640	2,752	2,692	2,755	2,687	2,808	2,708	2,766	2,769
Soft tissue including heart	7,333	7,687	7,846	8,035	8,383	8,792	9,025	8,897	9,449	9,589	9,707	9,978	9,810	10,000
Skin excluding basal and squamous	42,231	45,624	49,078	50,756	51,026	54,246	58,466	58,591	60,959	63,467	65,477	65,306	67,704	68,633
Melanoma of the skin	38,867	41,925	45,141	46,757	46,935	50,040	54,096	54,225	56,303	58,484	60,335	60,397	62,674	63,502
Other nonepithelial skin	3,364	3,699	3,937	3,999	4,091	4,206	4,370	4,366	4,656	4,983	5,142	4,909	5,030	5,131
Male and female breast	187,922	187,408	189,541	188,438	181,949	182,828	185,308	189,451	194,935	200,299	205,221	201,894	208,322	210,356
Female breast	186,459	185,946	188,139	186,934	180,386	181,216	183,738	187,819	193,211	198,411	203,405	199,991	206,446	208,404
Male breast	1,463	1,462	1,402	1,504	1,563	1,612	1,570	1,632	1,724	1,888	1,816	1,903	1,876	1,952
Female genital system	71,591	72,193	72,986	72,698	71,893	72,881	74,556	75,675	77,446	79,354	81,185	81,437	83,020	84,199
Cervix	12,991	12,984	12,399	12,079	11,726	11,491	11,719	11,653	11,705	11,623	11,807	11,395	11,339	11,145
Corpus and uterus, NOS	33,458	33,501	34,731	34,927	34,388	35,868	36,928	37,859	39,260	40,755	42,496	43,347	44,709	45,902
Corpus	32,350	32,366	33,573	33,763	33,224	34,727	35,751	36,721	38,124	39,440	41,081	41,970	43,247	44,449
Uterus, NOS	1,108	1,135	1,158	1,164	1,164	1,141	1,177	1,138	1,136	1,315	1,415	1,377	1,462	1,453
Ovary	19,875	20,339	20,361	20,075	20,187	19,805	20,113	20,175	20,131	20,409	20,000	19,569	19,524	19,382
Vagina	1,020	1,088	1,075	1,100	1,052	1,103	1,010	1,083	1,097	1,146	1,154	1,163	1,178	1,199
Vulva	3,401	3,348	3,494	3,515	3,551	3,579	3,700	3,788	3,986	4,017	4,201	4,223	4,355	4,502
Other female genital organs	846	933	926	1,002	989	1,035	1,086	1,117	1,267	1,404	1,527	1,740	1,915	2,069

See table footnotes on page 52.

TABLE 13. Reported number of invasive* cancer cases by primary cancer site and year — United States, 1999–2012†

Cancer site	1999	2000	2001	2002	2003	2004	2005	2006	2007	2008	2009	2010	2011	2012
Male genital system	194,920	200,489	206,681	208,978	196,114	195,842	196,522	214,202	226,520	215,968	211,749	203,731	207,234	173,864
Prostate	186,717	192,151	198,257	200,678	187,529	187,229	187,731	205,526	217,631	206,730	202,691	194,600	198,110	164,613
Testis	6,937	7,052	7,160	7,017	7,251	7,355	7,501	7,346	7,509	7,690	7,650	7,673	7,579	7,724
Penis	1,004	1,008	991	1,025	1,053	988	997	1,025	1,099	1,211	1,106	1,143	1,206	1,194
Other male genital organs	262	278	273	258	281	270	293	305	281	337	302	315	339	333
Urinary system	89,166	91,902	94,178	97,018	100,211	103,654	106,689	108,167	111,587	114,459	115,944	115,668	117,650	119,465
Urinary bladder	55,822	56,845	57,153	58,168	59,242	60,732	61,706	60,721	62,484	63,354	64,138	64,051	64,872	65,494
Kidney and renal pelvis	31,073	32,824	34,756	36,629	38,706	40,615	42,661	44,965	46,608	48,383	49,203	49,018	50,068	51,269
Ureter	1,553	1,536	1,560	1,565	1,573	1,608	1,600	1,721	1,668	1,701	1,723	1,720	1,764	1,783
Other urinary organs	718	697	709	656	690	699	722	760	827	1,021	880	879	946	919
Eye and orbit	2,185	2,266	2,283	2,258	2,441	2,459	2,440	2,484	2,538	2,514	2,537	2,438	2,474	2,589
Brain and other nervous system	17,611	17,830	17,766	18,267	18,353	18,879	18,993	19,201	19,512	19,858	20,019	19,809	19,893	19,929
Brain	16,446	16,581	16,541	17,069	17,000	17,542	17,661	17,975	18,204	18,543	18,709	18,587	18,703	18,727
Cranial nerves other nervous system	1,165	1,249	1,225	1,198	1,353	1,337	1,332	1,226	1,308	1,315	1,310	1,222	1,190	1,202
Endocrine system	19,093	21,074	22,594	24,401	25,856	28,353	31,030	33,174	36,000	39,386	41,693	42,584	43,924	45,696
Thyroid	17,385	19,322	20,731	22,557	23,905	26,263	28,946	31,071	33,816	37,089	39,506	40,322	41,814	43,523
Other endocrine including thymus	1,708	1,752	1,863	1,844	1,951	2,090	2,084	2,103	2,184	2,297	2,187	2,262	2,110	2,173
Lymphomas	56,381	57,054	58,147	59,578	60,948	62,813	63,613	63,762	65,116	66,350	67,262	67,800	67,173	67,005
Hodgkin lymphoma	7,272	7,461	7,346	7,678	7,617	7,726	7,981	7,905	7,972	8,273	8,012	8,069	7,884	7,704
Non-Hodgkin lymphoma	49,109	49,593	50,801	51,900	53,331	55,087	55,632	55,857	57,144	58,077	59,250	59,731	59,289	59,301
Myeloma	14,184	14,849	15,308	15,608	15,901	16,548	16,879	16,946	17,236	18,122	18,828	19,416	19,942	20,284
Leukemias	32,688	34,533	35,367	34,808	35,970	36,580	36,752	37,614	37,875	38,508	39,192	41,214	41,530	41,569
Acute lymphocytic leukemia	3,670	3,823	3,939	3,916	3,970	4,131	4,066	4,269	4,380	4,536	4,491	4,600	4,701	4,536
Chronic lymphocytic leukemia	10,499	11,455	12,049	12,149	12,669	13,133	13,511	13,683	13,352	13,548	13,605	13,759	13,897	13,938
Acute myeloid leukemia	9,535	10,089	10,192	9,895	10,143	10,132	10,015	10,292	10,407	10,824	10,938	12,208	12,448	12,883
Chronic myeloid leukemia	4,122	4,305	4,343	4,104	4,302	4,437	4,370	4,612	4,643	4,758	5,045	5,278	5,305	5,223
Other leukemias	4,862	4,861	4,844	4,744	4,886	4,747	4,790	4,758	5,093	4,842	5,113	5,369	5,179	4,989
Mesothelioma	2,825	2,889	2,891	2,935	2,925	2,964	3,074	2,978	2,974	3,012	3,048	3,070	3,079	3,002
Kaposi Sarcoma	1,406	1,399	1,391	1,306	1,349	1,315	1,355	1,226	1,263	1,191	1,172	1,112	1,113	1,036
Miscellaneous	32,014	31,788	31,511	31,304	30,362	30,030	30,045	29,848	29,849	29,874	29,845	30,598	30,160	30,457

Abbreviation: NOS = not otherwise specified.

* Invasive cancer excludes basal and squamous cell carcinomas of the skin except when these occur on the skin of the genital organs, and in situ cancers except urinary bladder. Urinary bladder cancer includes invasive and in situ.

† Data are compiled from cancer registries that meet the data quality criteria for all invasive cancer sites combined for all years, 1999–2012 (covering approximately 92% of the U.S. population). See registry-specific data quality information for all years, 1999–2012 (<http://www.cdc.gov/cancer/npcr/uscs/pdf/uscs-2012-technical-notes.pdf#nameddest=RegistriesPubCriteria>). Caution should be used when comparing number of cases and deaths because of potential differences in population coverage.

TABLE 14. Reported number of cancer deaths, by primary cancer site and year — United States, 1999–2012*

Cancer site	1999	2000	2001	2002	2003	2004	2005	2006	2007	2008	2009	2010	2011	2012
All cancer sites combined	549,829	553,080	553,760	557,264	556,890	553,880	559,303	559,880	562,867	565,460	567,614	574,738	576,685	582,607
Oral cavity and pharynx	7,486	7,492	7,701	7,737	7,777	7,826	7,773	7,720	8,067	8,019	7,922	8,474	8,657	8,924
Lip	52	67	77	74	72	74	60	51	66	68	57	69	83	71
Tongue	1,738	1,767	1,818	1,887	1,875	1,881	1,948	1,906	2,034	1,983	1,971	2,125	2,089	2,224
Salivary gland	656	663	685	722	696	697	701	699	742	718	795	827	820	869
Floor of mouth	180	153	135	149	147	122	135	114	102	99	109	93	84	75
Gum and other mouth	1,215	1,213	1,179	1,152	1,176	1,168	1,118	1,108	1,109	1,160	1,091	1,212	1,245	1,275
Nasopharynx	638	650	621	628	598	637	615	633	677	645	662	701	630	666
Tonsil	543	518	612	638	608	592	647	654	688	724	736	795	842	879
Oropharynx	600	547	592	606	626	658	655	650	721	734	720	806	861	891
Hypopharynx	385	359	348	323	318	368	281	301	324	294	279	324	322	356
Other oral cavity and pharynx	1,479	1,555	1,634	1,558	1,661	1,629	1,613	1,604	1,604	1,594	1,502	1,522	1,681	1,618
Digestive system	130,070	131,455	131,726	132,541	133,010	132,215	133,562	135,140	136,419	138,469	139,200	142,680	144,007	147,024
Esophagus	11,917	12,232	12,529	12,700	12,860	13,023	13,499	13,685	13,592	13,714	13,908	14,490	14,446	14,649
Stomach	12,711	12,645	12,319	12,198	12,110	11,859	11,514	11,345	11,388	11,352	11,184	11,390	11,035	11,191
Small intestine	1,036	1,057	1,082	1,017	1,070	1,115	1,117	1,091	1,083	1,192	1,195	1,218	1,256	1,293
Colon and rectum	57,222	57,434	56,808	56,603	55,783	53,580	53,005	53,196	53,219	52,857	51,848	52,045	51,783	51,516
Colon excluding rectum	48,962	49,019	48,292	47,987	47,248	44,988	44,325	44,331	44,247	43,650	42,471	42,245	42,181	41,867
Rectum and rectosigmoid junction	8,260	8,415	8,516	8,616	8,535	8,592	8,680	8,865	8,972	9,207	9,377	9,800	9,602	9,649
Anus, anal canal, and anorectum	462	492	511	539	555	589	583	623	644	718	818	813	863	889
Liver and intrahepatic bile duct	12,382	12,916	13,351	14,047	14,706	15,321	16,075	16,525	17,146	18,213	19,352	20,304	21,608	22,972
Gallbladder	2,059	1,949	1,971	1,907	1,915	1,936	1,989	2,000	1,914	1,971	2,048	2,105	2,101	2,102
Other biliary	1,531	1,717	1,630	1,501	1,491	1,461	1,464	1,427	1,436	1,377	1,384	1,519	1,510	1,519
Pancreas	29,081	29,331	29,802	30,263	30,777	31,771	32,759	33,454	34,117	35,234	35,628	36,888	37,344	38,797
Retroperitoneum	220	262	220	219	191	219	238	190	204	226	186	202	219	207
Peritoneum, omentum, and mesentery	429	503	543	616	602	686	648	698	721	695	703	702	807	750
Other digestive organs	1,020	917	960	931	950	655	671	906	955	920	946	1,004	1,035	1,139
Respiratory system	156,708	160,051	160,602	162,148	162,589	162,400	163,751	163,134	163,065	163,141	162,492	162,730	161,376	161,851
Nose, nasal cavity, and middle ear	456	419	485	444	457	458	484	426	475	516	530	495	416	458
Larynx	3,815	3,861	3,797	3,722	3,791	3,668	3,796	3,821	3,634	3,760	3,630	3,691	3,732	3,662
Lung and bronchus	152,061	155,426	155,969	157,630	157,990	158,006	159,217	158,599	158,683	158,592	158,081	158,248	156,953	157,423
Pleura	99	76	84	73	76	78	67	64	48	54	55	54	61	82
Trachea, mediastinum, and other respiratory organs	277	269	267	279	275	190	187	224	225	219	196	242	214	226
Bones and joints	1,224	1,212	1,298	1,194	1,262	1,301	1,391	1,340	1,362	1,357	1,384	1,378	1,423	1,399
Soft tissue including heart	3,679	3,693	3,646	3,554	3,651	3,722	3,849	3,960	4,023	4,093	4,229	4,376	4,408	4,559
Skin excluding basal and squamous	9,530	9,672	9,992	9,904	10,214	10,301	10,798	11,068	11,234	11,337	12,130	12,089	12,212	12,463
Melanoma of the skin	7,215	7,420	7,542	7,513	7,818	7,952	8,345	8,441	8,461	8,623	9,199	9,154	9,128	9,251
Other nonepithelial skin	2,315	2,252	2,450	2,391	2,396	2,349	2,453	2,627	2,773	2,714	2,931	2,935	3,084	3,212
Male and female breast	41,528	42,300	41,809	41,883	41,998	41,316	41,491	41,209	40,969	41,026	41,076	41,435	41,374	41,555
Female breast	41,144	41,872	41,394	41,514	41,619	40,954	41,116	40,820	40,598	40,589	40,676	40,996	40,931	41,150
Male breast	384	428	415	369	379	362	375	389	371	437	400	439	443	405

See table footnotes on page 54.

TABLE 14. (Continued) Reported number of cancer deaths, by primary cancer site and year — United States, 1999–2012*

Cancer site	1999	2000	2001	2002	2003	2004	2005	2006	2007	2008	2009	2010	2011	2012
Female genital system	25,881	26,411	26,838	27,091	27,011	27,049	27,259	27,848	27,739	27,813	27,817	28,770	29,027	29,405
Cervix	4,204	4,200	4,092	3,952	3,919	3,850	3,924	3,976	4,021	4,008	3,909	3,939	4,092	4,074
Corpus and uterus, NOS	6,468	6,585	6,783	6,853	6,899	6,990	7,096	7,384	7,456	7,675	7,713	8,402	8,641	8,911
Corpus	3,121	3,139	3,185	3,187	3,261	3,272	3,259	3,449	3,377	3,436	3,333	3,644	3,714	3,812
Uterus, NOS	3,347	3,446	3,598	3,666	3,638	3,718	3,837	3,935	4,079	4,239	4,380	4,758	4,927	5,099
Ovary	13,627	14,060	14,414	14,682	14,657	14,716	14,787	14,857	14,621	14,362	14,436	14,572	14,346	14,404
Vagina	403	405	382	378	391	416	382	396	376	417	398	423	428	429
Vulva	762	752	765	794	775	806	809	862	865	921	946	942	1,022	1,034
Other female genital organs	417	409	402	432	370	271	261	373	400	430	415	492	498	553
Male genital system	32,349	31,675	31,300	31,084	30,176	29,627	29,514	29,022	29,703	29,120	28,744	29,276	28,630	27,955
Prostate	31,728	31,078	30,719	30,446	29,554	29,002	28,905	28,372	29,093	28,471	28,088	28,560	27,970	27,244
Testis	378	338	335	393	344	357	359	358	326	358	376	399	380	386
Penis	202	217	205	209	250	231	217	245	246	246	234	258	239	273
Other male genital organs	41	42	41	36	28	37	33	47	38	45	46	59	41	52
Urinary system	23,666	24,344	24,910	25,443	25,422	25,928	26,404	26,649	27,319	27,682	27,941	28,726	29,317	29,594
Urinary bladder	11,910	12,002	12,225	12,627	12,483	13,030	13,253	13,474	13,843	14,036	14,201	14,730	15,014	15,245
Kidney and renal pelvis	11,116	11,736	12,078	12,165	12,286	12,313	12,517	12,379	12,703	12,895	12,995	13,219	13,559	13,518
Ureter	345	302	294	297	323	334	347	361	340	354	371	350	338	378
Other urinary organs	295	304	313	354	330	251	287	435	433	397	374	427	406	453
Eye and orbit	227	236	226	240	231	208	252	219	249	262	278	283	280	279
Brain and other nervous system	12,765	12,655	12,609	12,830	12,901	12,829	13,152	12,886	13,234	13,724	14,176	14,164	14,491	15,276
Endocrine system	2,146	2,210	2,299	2,231	2,155	2,272	2,354	2,404	2,488	2,555	2,634	2,641	2,689	2,660
Thyroid	1,241	1,328	1,354	1,367	1,312	1,409	1,462	1,518	1,562	1,649	1,707	1,686	1,747	1,690
Other endocrine including thymus	905	882	945	864	843	863	892	886	926	906	927	955	942	970
Lymphomas	24,205	24,016	23,628	23,262	22,822	22,214	22,145	21,920	21,799	21,539	21,639	21,525	21,485	21,518
Hodgkin lymphoma	1,403	1,287	1,323	1,352	1,347	1,276	1,272	1,327	1,271	1,171	1,250	1,231	1,168	1,130
Non-Hodgkin lymphoma	22,802	22,729	22,305	21,910	21,475	20,938	20,873	20,593	20,528	20,368	20,389	20,294	20,317	20,388
Myeloma	10,508	10,639	10,714	10,913	10,809	10,578	10,758	10,712	10,872	10,606	10,690	11,022	11,411	11,821
Leukemias	21,071	21,397	21,532	21,581	21,608	21,472	21,716	22,016	21,928	22,431	22,688	22,673	23,194	23,309
Acute lymphocytic leukemia	1,361	1,395	1,433	1,432	1,429	1,371	1,460	1,393	1,418	1,424	1,423	1,436	1,432	1,408
Chronic lymphocytic leukemia	4,476	4,323	4,386	4,443	4,476	4,342	4,391	4,498	4,471	4,395	4,557	4,486	4,608	4,598
Acute myeloid leukemia	6,932	7,413	7,749	7,914	8,126	8,214	8,267	8,539	8,568	8,962	9,223	9,150	9,491	9,484
Chronic myeloid leukemia	1,788	1,802	1,649	1,367	1,233	1,164	1,067	1,077	984	1,000	1,003	1,019	1,091	1,017
Other leukemias	6,514	6,464	6,315	6,425	6,344	6,381	6,531	6,509	6,487	6,650	6,482	6,582	6,572	6,802
Mesothelioma	2,343	2,384	2,371	2,430	2,476	2,504	2,553	2,452	2,432	2,538	2,606	2,574	2,651	2,686
Miscellaneous	44,401	41,176	40,519	41,144	40,723	40,070	40,534	40,140	39,920	39,700	39,926	39,886	40,002	40,276

Abbreviation: NOS = not otherwise specified.

* Data are from the National Vital Statistics System (NVSS). Data for deaths cover 100% of the U.S. population. Use caution when comparing numbers of cases and deaths because of potential differences in population coverage. For more information, see USCS technical notes (<http://www.cdc.gov/cancer/npcr/uscs/pdf/uscs-2012-technical-notes.pdf>).

TABLE 15. Age-adjusted rate* of invasive† cancer cases, by primary cancer site and year — United States, 1999–2012§

Cancer site	1999	2000	2001	2002	2003	2004	2005	2006	2007	2008	2009	2010	2011	2012
All cancer sites combined	483.9	485.1	487.2	483.7	473.1	471.6	470.9	473.4	476.5	471.8	466.0	453.2	450.9	433.7
Oral cavity and pharynx	10.9	10.8	10.8	10.8	10.8	10.8	10.7	10.8	11.1	11.3	11.2	11.2	11.4	11.2
Lip	1.0	0.9	0.9	0.9	0.8	0.7	0.7	0.7	0.7	0.6	0.6	0.6	0.6	0.5
Tongue	2.6	2.7	2.7	2.8	2.8	2.9	2.9	3.0	3.1	3.3	3.3	3.2	3.4	3.4
Salivary gland	1.2	1.2	1.2	1.2	1.2	1.2	1.2	1.3	1.3	1.3	1.3	1.2	1.2	1.3
Floor of mouth	0.8	0.8	0.8	0.8	0.7	0.7	0.6	0.7	0.6	0.6	0.6	0.6	0.6	0.5
Gum and other mouth	1.7	1.6	1.6	1.6	1.6	1.6	1.5	1.5	1.6	1.6	1.5	1.6	1.6	1.5
Nasopharynx	0.6	0.6	0.5	0.6	0.6	0.6	0.6	0.5	0.6	0.6	0.5	0.5	0.5	0.5
Tonsil	1.4	1.4	1.4	1.5	1.6	1.6	1.6	1.7	1.7	1.8	2.0	1.9	2.0	2.0
Oropharynx	0.4	0.4	0.4	0.4	0.5	0.5	0.5	0.5	0.5	0.5	0.5	0.5	0.5	0.5
Hypopharynx	0.9	0.8	0.8	0.8	0.8	0.8	0.7	0.7	0.7	0.7	0.7	0.6	0.6	0.6
Other oral cavity and pharynx	0.4	0.4	0.4	0.3	0.3	0.3	0.3	0.2	0.3	0.3	0.2	0.3	0.3	0.3
Digestive system	91.8	91.6	91.2	90.1	89.7	88.7	87.3	86.3	85.6	84.8	82.9	80.7	80.1	78.4
Esophagus	5.0	5.0	5.0	4.9	5.0	5.1	5.0	5.0	4.9	5.0	4.9	4.6	4.6	4.5
Stomach	7.6	7.5	7.4	7.3	7.3	7.2	7.0	6.8	6.8	6.7	6.6	6.8	6.7	6.6
Small intestine	1.7	1.7	1.8	1.8	1.9	2.0	2.0	2.1	2.1	2.2	2.2	2.3	2.3	2.3
Colon and rectum	56.4	56.0	55.1	53.8	52.6	51.0	49.6	48.1	46.9	45.7	43.4	41.3	40.4	38.8
Colon excluding rectum	41.1	40.9	40.4	39.4	38.5	37.3	36.0	35.0	34.1	33.2	31.3	29.7	29.0	27.7
Rectum and rectosigmoid junction	15.2	15.1	14.8	14.4	14.1	13.8	13.6	13.1	12.8	12.5	12.1	11.6	11.4	11.1
Anus, anal canal, and anorectum	1.4	1.4	1.4	1.4	1.5	1.6	1.6	1.6	1.7	1.7	1.8	1.7	1.8	1.8
Liver and intrahepatic bile duct	4.9	5.2	5.2	5.4	5.6	5.9	6.1	6.3	6.8	7.0	7.4	7.4	7.6	7.8
Gallbladder	1.2	1.2	1.2	1.1	1.2	1.1	1.2	1.2	1.1	1.1	1.2	1.2	1.1	1.1
Other biliary	1.3	1.4	1.6	1.7	1.7	1.7	1.7	1.7	1.7	1.7	1.8	1.8	1.8	1.7
Pancreas	11.1	11.2	11.3	11.2	11.5	11.6	11.8	12.0	12.0	12.3	12.2	12.3	12.4	12.4
Retroperitoneum	0.4	0.4	0.4	0.4	0.4	0.4	0.4	0.4	0.4	0.4	0.4	0.4	0.4	0.4
Peritoneum, omentum, and mesentery	0.4	0.5	0.5	0.6	0.6	0.7	0.6	0.6	0.7	0.7	0.6	0.6	0.6	0.6
Other digestive organs	0.3	0.3	0.4	0.4	0.4	0.4	0.4	0.4	0.4	0.4	0.4	0.4	0.5	0.5
Respiratory system	76.3	75.6	75.4	74.9	74.7	73.9	74.0	73.1	72.1	71.3	69.9	67.5	65.8	64.0
Nose, nasal cavity, and middle ear	0.7	0.7	0.7	0.7	0.7	0.7	0.7	0.7	0.7	0.7	0.7	0.7	0.7	0.7
Larynx	4.6	4.5	4.4	4.1	4.1	4.1	4.0	3.9	3.9	3.8	3.7	3.6	3.5	3.3
Lung and bronchus	70.7	70.1	70.1	69.9	69.7	68.8	69.1	68.2	67.3	66.6	65.3	62.9	61.5	59.8
Pleura	0	0	0	0	0	0	0	0	0	0	0	0	0	0
Trachea, mediastinum, and other respiratory organs	0.2	0.2	0.2	0.2	0.2	0.2	0.2	0.2	0.2	0.2	0.2	0.2	0.2	0.2
Bones and joints	1.0	0.9	1.0	1.0	1.0	1.0	1.0	1.0	1.0	0.9	1.0	0.9	0.9	0.9
Soft tissue including heart	2.9	3.0	3.0	3.0	3.1	3.2	3.3	3.2	3.3	3.3	3.3	3.3	3.2	3.2
Skin excluding basal and squamous	16.6	17.7	18.7	19.1	18.9	19.8	21.0	20.7	21.1	21.6	21.9	21.5	21.9	21.7
Melanoma of the skin	15.3	16.2	17.2	17.6	17.4	18.2	19.4	19.1	19.5	19.9	20.2	19.8	20.2	20.1
Other nonepithelial skin	1.3	1.4	1.5	1.5	1.5	1.5	1.6	1.6	1.6	1.7	1.7	1.6	1.6	1.6
Male and female breast	74.3	72.7	72.3	70.6	66.9	66.1	65.7	66.0	66.7	67.2	67.6	65.3	66.3	65.7
Female breast	135.2	132.8	132.3	129.3	122.9	121.5	121.0	121.9	123.2	124.4	125.3	121.2	123.2	122.3
Male breast	1.4	1.3	1.2	1.3	1.3	1.3	1.3	1.3	1.3	1.4	1.3	1.4	1.3	1.3

See table footnotes on page 56.

TABLE 15. (Continued) Age-adjusted rate* of invasive† cancer cases, by primary cancer site and year — United States, 1999–2012‡

Cancer site	1999	2000	2001	2002	2003	2004	2005	2006	2007	2008	2009	2010	2011	2012
Female genital system	51.9	51.6	51.4	50.4	49.0	48.9	49.1	49.1	49.3	49.6	49.9	49.0	49.1	48.9
Cervix	9.7	9.6	9.1	8.7	8.4	8.2	8.2	8.1	8.1	7.9	8.0	7.6	7.5	7.4
Corpus and uterus, NOS	24.2	23.8	24.3	24.0	23.2	23.8	24.0	24.2	24.5	24.9	25.4	25.4	25.7	25.8
Corpus	23.4	23.1	23.6	23.3	22.5	23.0	23.3	23.4	23.8	24.1	24.6	24.6	24.9	25.0
Uterus, NOS	0.8	0.8	0.8	0.8	0.8	0.7	0.7	0.7	0.7	0.8	0.8	0.8	0.8	0.8
Ovary	14.3	14.4	14.2	13.8	13.6	13.2	13.1	13.0	12.7	12.7	12.2	11.8	11.6	11.3
Vagina	0.7	0.8	0.7	0.7	0.7	0.7	0.6	0.7	0.7	0.7	0.7	0.7	0.7	0.7
Vulva	2.4	2.3	2.4	2.4	2.4	2.3	2.4	2.4	2.5	2.5	2.5	2.5	2.5	2.6
Other female genital organs	0.6	0.7	0.7	0.7	0.7	0.7	0.7	0.7	0.8	0.9	0.9	1.0	1.1	1.2
Male genital system	176.5	178.4	180.6	178.4	163.7	159.7	156.4	166.0	170.1	157.0	148.7	139.2	137.5	111.7
Prostate	170.0	171.9	174.1	172.0	157.1	153.1	149.7	159.5	163.4	150.1	142.0	132.5	130.9	105.1
Testis	5.3	5.4	5.4	5.3	5.5	5.5	5.6	5.5	5.5	5.7	5.6	5.6	5.5	5.5
Penis	0.9	0.9	0.9	0.9	0.9	0.8	0.8	0.8	0.9	0.9	0.8	0.8	0.9	0.8
Other male genital organs	0.2	0.3	0.2	0.2	0.2	0.2	0.2	0.2	0.2	0.3	0.2	0.2	0.2	0.2
Urinary system	35.2	35.7	36.1	36.6	37.1	37.8	38.2	38.1	38.5	38.7	38.4	37.5	37.4	37.1
Urinary bladder	22.0	22.1	21.9	22.0	22.0	22.2	22.2	21.5	21.7	21.5	21.3	20.9	20.7	20.4
Kidney and renal pelvis	12.3	12.7	13.3	13.7	14.3	14.7	15.2	15.7	16.0	16.2	16.2	15.8	15.8	15.9
Ureter	0.6	0.6	0.6	0.6	0.6	0.6	0.6	0.6	0.6	0.6	0.6	0.6	0.6	0.6
Other urinary organs	0.3	0.3	0.3	0.2	0.3	0.3	0.3	0.3	0.3	0.3	0.3	0.3	0.3	0.3
Eye and orbit	0.9	0.9	0.9	0.8	0.9	0.9	0.9	0.9	0.9	0.9	0.9	0.8	0.8	0.8
Brain and other nervous system	6.9	6.9	6.8	6.9	6.8	6.9	6.9	6.8	6.8	6.8	6.8	6.6	6.5	6.4
Brain	6.4	6.4	6.3	6.4	6.3	6.4	6.4	6.4	6.4	6.4	6.3	6.2	6.1	6.0
Cranial nerves other nervous system	0.5	0.5	0.5	0.5	0.5	0.5	0.5	0.4	0.5	0.5	0.5	0.4	0.4	0.4
Endocrine system	7.5	8.1	8.6	9.2	9.6	10.4	11.2	11.8	12.7	13.7	14.3	14.5	14.7	15.2
Thyroid	6.8	7.4	7.9	8.5	8.9	9.6	10.5	11.1	11.9	12.9	13.6	13.7	14.0	14.5
Other endocrine including thymus	0.7	0.7	0.7	0.7	0.7	0.8	0.8	0.8	0.8	0.8	0.7	0.8	0.7	0.7
Lymphomas	22.2	22.1	22.2	22.4	22.6	22.9	22.9	22.6	22.6	22.7	22.6	22.4	21.8	21.3
Hodgkin lymphoma	2.8	2.9	2.8	2.9	2.8	2.9	2.9	2.9	2.9	2.9	2.8	2.8	2.7	2.6
Non-Hodgkin lymphoma	19.3	19.2	19.4	19.5	19.8	20.1	19.9	19.7	19.8	19.7	19.8	19.5	19.0	18.6
Myeloma	5.6	5.8	5.9	5.9	5.9	6.0	6.0	5.9	5.9	6.1	6.2	6.3	6.3	6.3
Leukemias	12.9	13.4	13.5	13.1	13.4	13.4	13.3	13.4	13.2	13.2	13.2	13.6	13.5	13.3
Acute lymphocytic leukemia	1.4	1.5	1.5	1.5	1.5	1.6	1.5	1.6	1.6	1.6	1.6	1.6	1.7	1.6
Chronic lymphocytic leukemia	4.1	4.5	4.6	4.6	4.7	4.8	4.8	4.8	4.6	4.6	4.5	4.4	4.4	4.3
Acute myeloid leukemia	3.7	3.9	3.9	3.7	3.8	3.7	3.6	3.7	3.6	3.7	3.7	4.1	4.1	4.1
Chronic myeloid leukemia	1.6	1.7	1.7	1.5	1.6	1.6	1.6	1.6	1.6	1.6	1.7	1.8	1.7	1.7
Other leukemias	1.9	1.9	1.9	1.8	1.8	1.7	1.7	1.7	1.8	1.7	1.7	1.8	1.7	1.6
Mesothelioma	1.1	1.1	1.1	1.1	1.1	1.1	1.1	1.1	1.0	1.0	1.0	1.0	1.0	1.0
Kaposi Sarcoma	0.5	0.5	0.5	0.5	0.5	0.5	0.5	0.5	0.5	0.4	0.4	0.4	0.4	0.4
Miscellaneous	12.6	12.4	12.1	11.8	11.2	10.9	10.7	10.5	10.3	10.1	9.8	9.9	9.6	9.4

Abbreviation: NOS = not otherwise specified.

* Rates are the number of cases per 100,000 persons and are age-adjusted to the 2000 U.S. standard population (19 age groups – Census P25–1130). For more information, see USCS technical notes (<http://www.cdc.gov/cancer/npcr/uscs/pdf/uscs-2012-technical-notes.pdf>).

† Invasive cancer excludes basal and squamous cell carcinomas of the skin except when these occur on the skin of the genital organs, and in situ cancers except urinary bladder. Urinary bladder cancer includes invasive and in situ.

‡ Data are compiled from cancer registries that meet the data quality criteria for all invasive cancer sites combined for all years, 1999–2012 (covering approximately 92% of the U.S. population). See registry-specific data quality information for all years, 1999–2012 (<http://www.cdc.gov/cancer/npcr/uscs/pdf/uscs-2012-technical-notes.pdf#nameddest=RegistriesPubCriteria>). Caution should be used when comparing incidence and death rates because of potential differences in population coverage.

TABLE 16. Age-adjusted rate* of cancer deaths, by primary cancer site and year — United States, 1999–2012†

Cancer site	1999	2000	2001	2002	2003	2004	2005	2006	2007	2008	2009	2010	2011	2012
All cancer sites combined	200.7	198.8	196.3	194.4	190.9	186.8	185.2	182.0	179.3	176.3	173.4	171.8	168.7	166.4
Oral cavity and pharynx	2.7	2.7	2.7	2.7	2.6	2.6	2.5	2.5	2.5	2.5	2.4	2.5	2.5	2.5
Lip	0	0	0	0	0	0	0	0	0	0	0	0	0	0
Tongue	0.6	0.6	0.6	0.7	0.6	0.6	0.6	0.6	0.6	0.6	0.6	0.6	0.6	0.6
Salivary gland	0.2	0.2	0.2	0.3	0.2	0.2	0.2	0.2	0.2	0.2	0.2	0.2	0.2	0.2
Floor of mouth	0.1	0.1	0	0.1	0	0	0	0	0	0	0	0	0	0
Gum and other mouth	0.4	0.4	0.4	0.4	0.4	0.4	0.4	0.4	0.4	0.4	0.3	0.4	0.4	0.4
Nasopharynx	0.2	0.2	0.2	0.2	0.2	0.2	0.2	0.2	0.2	0.2	0.2	0.2	0.2	0.2
Tonsil	0.2	0.2	0.2	0.2	0.2	0.2	0.2	0.2	0.2	0.2	0.2	0.2	0.2	0.2
Oropharynx	0.2	0.2	0.2	0.2	0.2	0.2	0.2	0.2	0.2	0.2	0.2	0.2	0.2	0.2
Hypopharynx	0.1	0.1	0.1	0.1	0.1	0.1	0.1	0.1	0.1	0.1	0.1	0.1	0.1	0.1
Other oral cavity and pharynx	0.5	0.6	0.6	0.5	0.6	0.5	0.5	0.5	0.5	0.5	0.4	0.4	0.5	0.4
Digestive system	47.5	47.3	46.7	46.2	45.6	44.5	44.1	43.8	43.3	43.0	42.3	42.3	41.8	41.6
Esophagus	4.3	4.4	4.4	4.4	4.4	4.4	4.4	4.4	4.3	4.2	4.2	4.3	4.2	4.1
Stomach	4.6	4.5	4.4	4.3	4.2	4.0	3.8	3.7	3.6	3.5	3.4	3.4	3.3	3.2
Small intestine	0.4	0.4	0.4	0.4	0.4	0.4	0.4	0.4	0.3	0.4	0.4	0.4	0.4	0.4
Colon and rectum	20.9	20.7	20.2	19.8	19.1	18.1	17.6	17.3	16.9	16.5	15.8	15.5	15.1	14.7
Colon excluding rectum	17.9	17.6	17.1	16.8	16.2	15.2	14.7	14.4	14.1	13.6	13.0	12.6	12.3	12.0
Rectum and rectosigmoid junction	3.0	3.0	3.0	3.0	2.9	2.9	2.9	2.9	2.8	2.9	2.8	2.9	2.8	2.7
Anus, anal canal, and anorectum	0.2	0.2	0.2	0.2	0.2	0.2	0.2	0.2	0.2	0.2	0.2	0.2	0.2	0.3
Liver and intrahepatic bile duct	4.5	4.6	4.7	4.9	5.0	5.1	5.3	5.3	5.4	5.6	5.8	5.9	6.1	6.3
Gallbladder	0.8	0.7	0.7	0.7	0.7	0.7	0.7	0.7	0.6	0.6	0.6	0.6	0.6	0.6
Other biliary	0.6	0.6	0.6	0.5	0.5	0.5	0.5	0.5	0.5	0.4	0.4	0.5	0.4	0.4
Pancreas	10.6	10.5	10.6	10.6	10.5	10.7	10.8	10.9	10.8	11.0	10.8	11.0	10.9	11.0
Retroperitoneum	0.1	0.1	0.1	0.1	0.1	0.1	0.1	0.1	0.1	0.1	0.1	0.1	0.1	0.1
Peritoneum, omentum, and mesentery	0.2	0.2	0.2	0.2	0.2	0.2	0.2	0.2	0.2	0.2	0.2	0.2	0.2	0.2
Other digestive organs	0.4	0.3	0.3	0.3	0.3	0.2	0.2	0.3	0.3	0.3	0.3	0.3	0.3	0.3
Respiratory system	57.1	57.5	57.0	56.6	55.8	54.8	54.3	53.2	52.1	51.0	49.7	48.7	47.3	46.2
Nose, nasal cavity, and middle ear	0.2	0.2	0.2	0.2	0.2	0.2	0.2	0.1	0.2	0.2	0.2	0.1	0.1	0.1
Larynx	1.4	1.4	1.3	1.3	1.3	1.2	1.2	1.1	1.1	1.2	1.1	1.1	1.1	1.0
Lung and bronchus	55.4	55.8	55.3	55.0	54.2	53.4	52.9	51.7	50.7	49.6	48.4	47.4	46.0	45.0
Pleura	0	0	0	0	0	0	0	0	0	0	0	0	0	0
Trachea, mediastinum, and other respiratory organs	0.1	0.1	0.1	0.1	0.1	0.1	0.1	0.1	0.1	0.1	0.1	0.1	0.1	0.1
Bones and joints	0.4	0.4	0.5	0.4	0.4	0.4	0.5	0.4	0.4	0.4	0.4	0.4	0.4	0.4
Soft tissue including heart	1.3	1.3	1.3	1.2	1.2	1.3	1.3	1.3	1.3	1.3	1.3	1.3	1.3	1.3
Skin excluding basal and squamous	3.5	3.5	3.5	3.4	3.5	3.5	3.6	3.6	3.6	3.5	3.7	3.6	3.6	3.6
Melanoma of the skin	2.6	2.7	2.7	2.6	2.7	2.7	2.8	2.7	2.7	2.7	2.8	2.7	2.7	2.7
Other nonepithelial skin	0.8	0.8	0.9	0.8	0.8	0.8	0.8	0.8	0.9	0.8	0.9	0.9	0.9	0.9
Male and female breast	15.2	15.2	14.8	14.5	14.3	13.8	13.6	13.2	12.9	12.7	12.4	12.3	12.0	11.8
Female breast	26.6	26.6	26.0	25.6	25.3	24.5	24.1	23.6	23.0	22.6	22.2	21.9	21.5	21.3
Male breast	0.3	0.4	0.4	0.3	0.3	0.3	0.3	0.3	0.3	0.3	0.3	0.3	0.3	0.3

See table footnotes on page 58.

TABLE 16. (Continued) Age-adjusted rate* of cancer deaths, by primary cancer site and year — United States, 1999–2012†

Cancer site	1999	2000	2001	2002	2003	2004	2005	2006	2007	2008	2009	2010	2011	2012
Female genital system	16.7	16.7	16.8	16.7	16.4	16.2	16.0	16.1	15.8	15.5	15.2	15.5	15.3	15.2
Cervix	2.8	2.8	2.7	2.6	2.5	2.4	2.4	2.4	2.4	2.4	2.3	2.3	2.3	2.3
Corpus and uterus, NOS	4.1	4.1	4.2	4.2	4.1	4.1	4.1	4.2	4.2	4.2	4.2	4.5	4.5	4.5
Corpus	2.0	2.0	2.0	1.9	2.0	1.9	1.9	2.0	1.9	1.9	1.8	1.9	1.9	1.9
Uterus, NOS	2.1	2.1	2.2	2.2	2.2	2.2	2.2	2.2	2.3	2.3	2.4	2.5	2.6	2.6
Ovary	8.8	8.9	9.0	9.0	8.9	8.8	8.7	8.6	8.3	8.0	7.9	7.8	7.5	7.4
Vagina	0.2	0.2	0.2	0.2	0.2	0.2	0.2	0.2	0.2	0.2	0.2	0.2	0.2	0.2
Vulva	0.5	0.4	0.5	0.5	0.4	0.5	0.5	0.5	0.5	0.5	0.5	0.5	0.5	0.5
Other female genital organs	0.3	0.3	0.3	0.3	0.2	0.2	0.2	0.2	0.2	0.2	0.2	0.3	0.3	0.3
Male genital system	32.1	30.9	30.0	29.2	27.7	26.7	25.8	24.7	24.7	23.5	22.6	22.3	21.2	20.0
Prostate	31.6	30.4	29.5	28.7	27.2	26.2	25.4	24.2	24.2	23.0	22.1	21.8	20.8	19.6
Testis	0.3	0.2	0.2	0.3	0.2	0.3	0.2	0.2	0.2	0.2	0.3	0.3	0.3	0.3
Penis	0.2	0.2	0.2	0.2	0.2	0.2	0.2	0.2	0.2	0.2	0.2	0.2	0.2	0.2
Other male genital organs	0	0	0	0	0	0	0	0	0	0	0	0	0	0
Urinary system	8.7	8.8	8.8	8.9	8.7	8.8	8.8	8.7	8.7	8.6	8.5	8.6	8.6	8.5
Urinary bladder	4.4	4.3	4.3	4.4	4.3	4.4	4.4	4.4	4.4	4.4	4.4	4.4	4.4	4.4
Kidney and renal pelvis	4.1	4.2	4.3	4.2	4.2	4.1	4.1	4.0	4.0	4.0	3.9	3.9	3.9	3.8
Ureter	0.1	0.1	0.1	0.1	0.1	0.1	0.1	0.1	0.1	0.1	0.1	0.1	0.1	0.1
Other urinary organs	0.1	0.1	0.1	0.1	0.1	0.1	0.1	0.1	0.1	0.1	0.1	0.1	0.1	0.1
Eye and orbit	0.1	0.1	0.1	0.1	0.1	0.1	0.1	0.1	0.1	0.1	0.1	0.1	0.1	0.1
Brain and other nervous system	4.6	4.5	4.4	4.5	4.4	4.3	4.3	4.2	4.2	4.3	4.3	4.2	4.3	4.4
Endocrine system	0.8	0.8	0.8	0.8	0.7	0.8	0.8	0.8	0.8	0.8	0.8	0.8	0.8	0.8
Thyroid	0.5	0.5	0.5	0.5	0.4	0.5	0.5	0.5	0.5	0.5	0.5	0.5	0.5	0.5
Other endocrine including thymus	0.3	0.3	0.3	0.3	0.3	0.3	0.3	0.3	0.3	0.3	0.3	0.3	0.3	0.3
Lymphomas	8.8	8.6	8.4	8.1	7.8	7.5	7.4	7.2	7.0	6.8	6.7	6.5	6.4	6.2
Hodgkin lymphoma	0.5	0.5	0.5	0.5	0.5	0.4	0.4	0.4	0.4	0.4	0.4	0.4	0.4	0.3
Non-Hodgkin lymphoma	8.3	8.2	7.9	7.7	7.4	7.1	6.9	6.7	6.6	6.4	6.3	6.1	6.0	5.9
Myeloma	3.8	3.8	3.8	3.8	3.7	3.6	3.6	3.5	3.5	3.3	3.3	3.3	3.4	3.4
Leukemias	7.7	7.7	7.6	7.5	7.4	7.3	7.3	7.2	7.1	7.1	7.1	6.9	6.9	6.8
Acute lymphocytic leukemia	0.5	0.5	0.5	0.5	0.5	0.5	0.5	0.5	0.5	0.5	0.5	0.5	0.4	0.4
Chronic lymphocytic leukemia	1.6	1.6	1.6	1.6	1.5	1.5	1.5	1.5	1.4	1.4	1.4	1.4	1.4	1.3
Acute myeloid leukemia	2.5	2.7	2.7	2.8	2.8	2.8	2.8	2.8	2.8	2.8	2.9	2.8	2.8	2.8
Chronic myeloid leukemia	0.7	0.6	0.6	0.5	0.4	0.4	0.4	0.4	0.3	0.3	0.3	0.3	0.3	0.3
Other leukemias	2.4	2.3	2.2	2.2	2.2	2.2	2.2	2.1	2.1	2.1	2.0	2.0	2.0	2.0
Mesothelioma	0.9	0.9	0.8	0.9	0.9	0.9	0.9	0.8	0.8	0.8	0.8	0.8	0.8	0.8
Miscellaneous	16.2	14.8	14.4	14.4	14.0	13.5	13.4	13.0	12.7	12.4	12.2	11.9	11.7	11.5

Abbreviation: NOS = not otherwise specified.

* Rates are the number of deaths per 100,000 persons and are age-adjusted to the 2000 U.S. standard population (19 age groups – Census P25-1130). For more information, see USCS technical notes (<http://www.cdc.gov/cancer/npcr/uscs/pdf/uscs-2012-technical-notes.pdf>).

† Data are from the National Vital Statistics System (NVSS). Data for deaths cover 100% of the U.S. population. Caution should be used when comparing incidence and death rates because of potential differences in population coverage.