

Notifiable Diseases and Mortality Tables

TABLE I. Provisional cases of selected* infrequently reported notifiable diseases (<1,000 cases reported during the preceding year) — United States, week ending July 8, 2017 (27th week)[†] (Export data)

Disease	Current week	Cum 2017	5-year weekly average [§]	Total cases reported for previous years					States reporting cases during current week (No.)
				2016	2015	2014	2013	2012	
Anthrax	—	—	—	—	—	—	—	—	
Arboviral diseases neuroinvasive and nonneuroinvasive ^{¶,**} :									
Chikungunya virus disease	—	14	8	246	896	NN	NN	NN	
Eastern equine encephalitis virus disease	—	—	0	7	6	8	8	15	
Jamestown Canyon virus disease	—	3	0	15	11	11	22	2	
La Crosse virus disease	—	—	1	35	55	80	85	78	
Powassan virus disease	—	5	0	22	7	8	12	7	
St. Louis encephalitis virus disease	—	1	1	8	23	10	1	3	
Western equine encephalitis virus disease	—	—	—	—	—	—	—	—	
Botulism, total	—	78	4	200	195	161	152	168	
foodborne	—	11	0	30	37	15	4	27	
infant	—	58	3	144	138	127	136	123	
other (wound and unspecified)	—	9	1	26	20	19	12	18	
Brucellosis	3	49	2	127	126	92	99	114	MD (1), TX (1), AZ (1)
Chancroid	—	6	0	7	11	—	—	15	
Cholera	—	—	0	2	5	5	14	17	
Cyclosporiasis**	13	143	41	536	645	388	784	123	CT (1), NYC (6), OH (2), MI (1), MO (1), TX (1), CA (1)
Diphtheria	—	—	—	—	—	1	—	1	
<i>Haemophilus influenzae</i> invasive disease (age <5 yrs) ^{††} :									
serotype b	—	12	0	30	29	40	31	30	
nontypeable	—	60	3	178	175	128	141	115	
non-b serotype	1	74	2	148	135	266	233	263	TX (1)
unknown serotype	2	147	3	216	167	39	34	37	KY (1), OR (1)
Hansen's disease**	—	39	2	78	89	88	81	82	
Hantavirus**:									
Hantavirus infection (non-HPS)	—	—	—	2	3	NN	NN	NN	
Hantavirus Pulmonary Syndrome (HPS)	—	4	1	14	21	32	21	30	
Hemolytic uremic syndrome, postdiarrheal**	2	106	8	307	274	250	329	274	KY (1), OR (1)
Hepatitis B, perinatal virus infection ^{§§}	—	9	1	33	37	47	48	40	
Influenza-associated pediatric mortality**, ^{¶¶}	—	105	1	83	130	141	160	52	
Leptospirosis**	—	27	1	78	40	38	NN	NN	
Listeriosis	9	277	19	786	768	769	735	727	PA (2), OH (1), MD (1), VA (1), FL (1), AR (1), TX (2)
Measles***	—	112	5	85	188	667	187	55	
Meningococcal disease (<i>Neisseria meningitidis</i>) ^{†††} :									
serogroup ACWY	—	34	2	116	120	123	142	161	
serogroup B	—	31	1	81	111	89	99	110	
other serogroup	—	8	0	21	21	25	17	20	
unknown serogroup	—	110	4	157	120	196	298	260	
Novel influenza A virus infections ^{§§§}	—	1	1	23	7	3	21	313	
Plague	—	1	0	—	16	10	4	4	
Poliomyelitis, paralytic	—	—	0	—	—	—	1	—	
Polio virus infection, nonparalytic**	—	—	—	—	—	—	—	—	
Psittacosis**	—	4	0	12	4	8	6	2	
Q fever, total**	—	67	3	164	156	168	170	135	
acute	—	51	3	132	122	132	137	113	
chronic	—	16	0	32	34	36	33	22	
Rabies, human	—	—	0	—	2	1	2	1	
SARS-CoV	—	—	—	—	—	—	—	—	
Smallpox	—	—	—	—	—	—	—	—	
Streptococcal toxic shock syndrome**	—	176	4	283	335	259	224	194	
Syphilis, congenital ^{¶¶¶}	—	223	8	624	493	458	348	322	
Toxic shock syndrome (other than streptococcal)**	1	10	1	40	64	59	71	65	OH (1)
Trichinellosis**	—	5	0	25	14	14	22	18	
Tularemia	2	65	9	230	314	180	203	149	WA (2)
Typhoid fever (caused by <i>Salmonella typhi</i>)	2	139	7	376	367	349	338	354	NYC (1), AZ (1)
Vancomycin-intermediate <i>Staphylococcus aureus</i> **	—	39	3	108	183	212	248	134	
Vancomycin-resistant <i>Staphylococcus aureus</i> **	—	—	0	—	3	—	—	2	

See Table I footnotes on next page.

TABLE I. (Continued) Provisional cases of selected* infrequently reported notifiable diseases (<1,000 cases reported during the preceding year) — United States, week ending July 8, 2017 (27th week)[†] (Export data)

Disease	Current week	Cum 2017	5-year weekly average [§]	Total cases reported for previous years					States reporting cases during current week (No.)
				2016	2015	2014	2013	2012	
Viral hemorrhagic fevers****.									
Crimean-Congo hemorrhagic fever	—	—	—	—	—	NP	NP	NP	
Ebola hemorrhagic fever	—	—	—	—	—	4	NP	NP	
Guanarito hemorrhagic fever	—	—	—	—	—	NP	NP	NP	
Junin hemorrhagic fever	—	—	—	—	—	NP	NP	NP	
Lassa fever	—	—	—	—	1	1	NP	NP	
Lujo virus	—	—	—	—	—	NP	NP	NP	
Machupo hemorrhagic fever	—	—	—	—	—	NP	NP	NP	
Marburg fever	—	—	—	—	—	NP	NP	NP	
Sabia-associated hemorrhagic fever	—	—	—	—	—	NP	NP	NP	
Yellow fever	—	—	—	—	—	—	—	—	
Zika virus disease, non-congenital ^{††††}	1	209	70	5,113	NN	NN	NN	NN	TX (1)

—: No reported cases. N: Not reportable. NA: Not available. NN: Not Nationally Notifiable. NP: Nationally notifiable but not published. Cum: Cumulative year-to-date counts.

* Case counts for reporting years 2016 and 2017 are provisional and subject to change. Data for years 2012 through 2015 are finalized. For further information on interpretation of these data, see <http://www.cdc.gov/nndss/document/ProvisionalNationalNotifiableDiseasesSurveillanceData20100927.pdf>.

[†] This table does not include cases from the U.S. territories. Three low incidence conditions, rubella, rubella congenital, and tetanus, are in Table II to facilitate case count verification with reporting jurisdictions.

[§] Calculated by summing the incidence counts for the current week, the 2 weeks preceding the current week, and the 2 weeks following the current week, for a total of 5 preceding years. Additional information is available at <http://www.cdc.gov/nndss/document/5yearweeklyaverage.pdf>.

[¶] Updated weekly reports from the Division of Vector-Borne Diseases, National Center for Emerging and Zoonotic Infectious Diseases (ArboNET Surveillance). Data for West Nile virus are available in Table II.

** Not reportable in all jurisdictions. Data from states where the condition is not reportable are excluded from this table, except for the arboviral diseases and influenza-associated pediatric mortality. Reporting exceptions are available at <http://www.cdc.gov/nndss/downloads.html>.

^{††} Data for Haemophilus influenzae (all ages, all serotypes) are available in Table II.

^{§§} In 2016, the nationally notifiable condition 'Hepatitis B Perinatal Infection' was renamed to 'Perinatal Hepatitis B Virus Infection' and reflects updates in the 2016 CSTE position statement for Perinatal Hepatitis B Virus Infection.

^{¶¶} Updated weekly from reports to the Influenza Division, National Center for Immunization and Respiratory Diseases. Since October 2, 2016, 101 influenza-associated pediatric deaths occurring during the 2016-17 season have been reported.

*** No measles cases were reported for the current week.

^{†††} Data for meningococcal disease (all serogroups) are available in Table II.

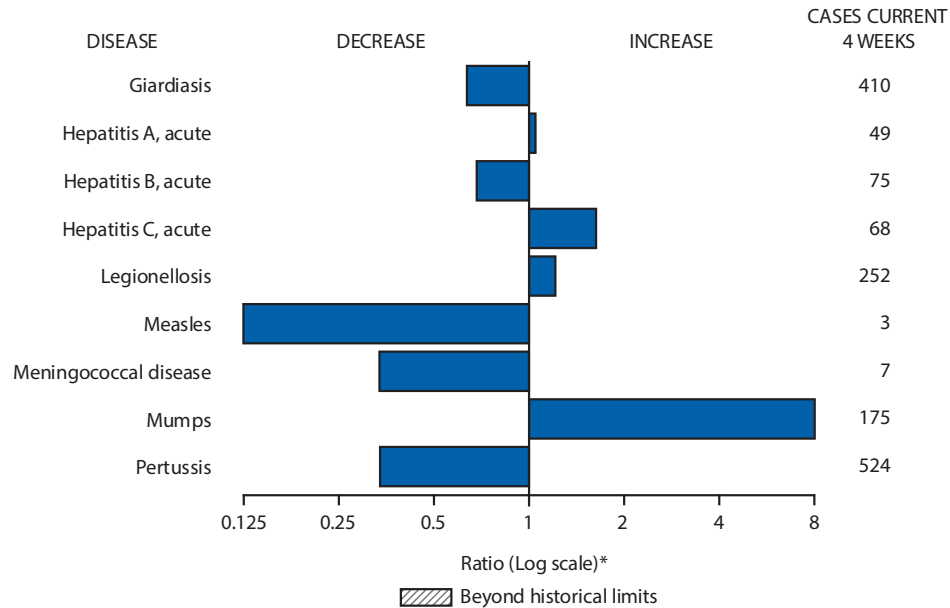
^{§§§} Novel influenza A virus infections are human infections with influenza A viruses that are different from currently circulating human seasonal influenza viruses. With the exception of one avian lineage influenza A (H7N2) virus, all novel influenza A virus infections reported to CDC since 2012 have been variant influenza viruses. Total case counts are provided by the Influenza Division, National Center for Immunization and Respiratory Diseases (NCIRD).

^{¶¶¶} Updated weekly from reports to the Division of STD Prevention, National Center for HIV/AIDS, Viral Hepatitis, STD, and TB Prevention.

**** Prior to 2015, CDC's National Notifiable Diseases Surveillance System (NNDSS) did not receive electronic data about incident cases of specific viral hemorrhagic fevers; instead data were collected in aggregate as "viral hemorrhagic fevers". Beginning in 2015, NNDSS has been updated to receive data for each of the viral hemorrhagic fevers listed below. In addition to the four cases of Ebola diagnosed in the United States to date in 2014, six residents of the United States have been medically evacuated to the United States for care after developing Ebola in West Africa. Ten of the 11 VHF cases reported for 2014 are confirmed as Ebola and one as Lassa fever.

^{††††} The Council of State and Territorial Epidemiologists approved position statement 16-ID-01 in June 2016, which modifies the previous case definition and naming convention from "Zika virus congenital infection" to "Zika virus disease, non-congenital".

FIGURE I. Selected notifiable disease reports, United States, comparison of provisional 4-week totals July 8, 2017, with historical data



* Ratio of current 4-week total to mean of 15 4-week totals (from previous, comparable, and subsequent 4-week periods for the past 5 years). The point where the hatched area begins is based on the mean and two standard deviations of these 4-week totals.

National Notifiable Diseases Data Team

Yvette D. Dominique
 Deborah A. Adams Willie J. Anderson
 Diana Harris Onweh Alan W. Schley

Data presented by the National Notifiable Diseases Data Team in the weekly MMWR are provisional, based on weekly reports to CDC by state health departments. Readers who have difficulty accessing this PDF file may access the HTML file at <https://www.cdc.gov/mmwr/volumes/66/wr/mm6627md.htm>. Address all inquiries about the MMWR Series, including material to be considered for publication, to Editor, MMWR Series, Mailstop E-90, CDC, 1600 Clifton Rd., N.E., Atlanta, GA 30329-4027 or to mmwrq@cdc.gov.

Morbidity and Mortality Weekly Report

TABLE II. Provisional cases of selected notifiable diseases (≥1,000 cases reported during the preceding year), and selected* low frequency diseases, United States and U.S. territories, weeks ending July 8, 2017, and July 9, 2016 (27th week)[†] (Export data)

Reporting area	Babesiosis					Campylobacteriosis				
	Current week	Previous 52 weeks		Cum 2017	Cum 2016	Current week	Previous 52 weeks		Cum 2017	Cum 2016
		Med	Max				Med	Max		
United States	28	12	147	241	609	586	1,102	3,079	26,336	27,780
New England	4	6	110	115	385	8	51	102	1,164	1,414
Connecticut	—	1	32	6	111	3	10	22	250	337
Maine	4	1	11	26	8	2	3	12	89	119
Massachusetts	—	3	50	60	219	—	26	44	567	670
New Hampshire	—	0	2	13	7	—	4	12	108	99
Rhode Island	—	1	25	7	39	—	4	13	81	95
Vermont	—	0	5	3	1	3	3	10	69	94
Mid. Atlantic	24	5	119	108	161	146	143	234	3,470	3,650
New Jersey	—	1	19	20	88	—	32	57	619	958
New York (Upstate)	23	3	118	77	61	57	33	74	748	769
New York City	1	0	9	11	12	52	35	59	1,046	824
Pennsylvania	N	0	0	N	N	37	42	82	1,057	1,099
E.N. Central	—	1	7	13	28	64	134	258	3,235	3,906
Illinois	—	0	0	—	2	—	33	61	713	971
Indiana	—	0	0	—	—	—	15	31	334	529
Michigan	—	0	1	—	—	1	30	54	646	700
Ohio	—	0	1	1	—	59	37	65	900	938
Wisconsin	—	1	7	12	26	4	28	61	642	768
W.N. Central	—	0	6	—	26	21	88	209	1,909	3,037
Iowa	—	0	1	—	—	—	18	44	446	525
Kansas	N	0	0	N	N	1	13	33	266	379
Minnesota	—	0	6	—	24	—	6	57	—	807
Missouri	N	0	1	N	N	10	26	58	642	647
Nebraska	—	0	0	—	1	10	10	27	267	300
North Dakota	—	0	0	—	1	—	4	13	129	121
South Dakota	—	0	0	—	—	—	7	17	159	258
S. Atlantic	—	0	1	2	4	35	162	256	4,053	4,463
Delaware	—	0	1	1	1	2	3	9	65	76
District of Columbia	N	0	0	N	N	—	0	0	—	—
Florida	N	0	0	N	N	—	70	111	1,960	1,638
Georgia	N	0	0	N	N	11	19	31	511	495
Maryland	—	0	1	1	2	5	16	31	375	411
North Carolina	N	0	0	N	N	—	24	49	426	723
South Carolina	—	0	1	—	1	—	7	16	90	182
Virginia	N	0	0	N	N	17	25	69	587	758
West Virginia	—	0	0	—	—	—	4	21	39	180
E.S. Central	—	0	1	2	—	5	50	75	1,205	1,148
Alabama	—	0	1	1	—	1	12	26	336	348
Kentucky	—	0	1	—	—	—	15	27	350	340
Mississippi	N	0	0	N	N	2	7	15	230	108
Tennessee	—	0	1	1	—	2	13	31	289	352
W.S. Central	—	0	1	—	3	122	128	293	2,866	3,007
Arkansas	—	0	0	—	1	8	11	29	269	244
Louisiana	—	0	0	—	2	—	9	23	125	262
Oklahoma	N	0	0	N	N	19	17	60	243	457
Texas	—	0	1	—	—	95	94	241	2,229	2,044
Mountain	—	0	1	—	—	25	91	158	2,316	2,267
Arizona	—	0	0	—	—	9	23	50	671	680
Colorado	N	0	0	N	N	—	18	45	483	517
Idaho	N	0	0	N	N	6	9	22	252	226
Montana	—	0	1	—	—	—	7	15	187	189
Nevada	N	0	0	N	N	—	4	10	77	103
New Mexico	N	0	0	N	N	10	11	27	295	213
Utah	—	0	0	—	—	—	10	21	263	255
Wyoming	—	0	0	—	—	—	3	9	88	84
Pacific	—	0	1	1	2	160	202	2,060	6,118	4,888
Alaska	N	0	0	N	N	—	2	7	37	45
California	—	0	1	—	1	93	170	264	4,621	4,118
Hawaii	N	0	0	N	N	—	9	36	316	248
Oregon	—	0	1	1	1	31	18	37	459	477
Washington	—	0	0	—	—	36	0	1,911	685	—
Territories										
American Samoa	U	0	0	U	U	—	0	0	—	—
C.N.M.I.	—	—	—	—	—	—	—	—	—	—
Guam	—	0	0	—	—	—	0	3	—	—
Puerto Rico	N	0	0	N	N	—	0	2	14	25
U.S. Virgin Islands	N	0	0	N	N	—	0	0	—	—

C.N.M.I.: Commonwealth of Northern Mariana Islands.

U: Unavailable. —: No reported cases. N: Not reportable. NN: Not Nationally Notifiable. NP: Nationally notifiable but not published. Cum: Cumulative year-to-date counts. Med: Median. Max: Maximum.

* Three low incidence conditions, rubella, rubella congenital, and tetanus, are in Table II to facilitate case count verification with reporting jurisdictions.

[†] Case counts for reporting years 2016 and 2017 are provisional and subject to change. For further information on interpretation of these data, see <http://www.cdc.gov/nndss/document/ProvisionalNationalNotifiableDiseasesSurveillanceData20100927.pdf>. Data for tuberculosis are displayed in Table III, which appears quarterly.

Morbidity and Mortality Weekly Report

TABLE II. (Continued) Provisional cases of selected notifiable diseases (≥1,000 cases reported during the preceding year), and selected* low frequency diseases, United States and U.S. territories, weeks ending July 8, 2017, and July 9, 2016 (27th week)[†] (Export data)

Reporting area	<i>Chlamydia trachomatis</i> infection					Coccidioidomycosis				
	Current week	Previous 52 weeks		Cum 2017	Cum 2016	Current week	Previous 52 weeks		Cum 2017	Cum 2016
		Med	Max				Med	Max		
United States	12,812	30,667	37,915	762,182	813,942	96	209	363	4,584	4,998
New England	311	1,074	1,524	26,757	27,085	—	0	1	1	2
Connecticut	3	252	459	4,549	6,590	N	0	0	N	N
Maine	56	88	153	2,441	2,079	N	0	0	N	N
Massachusetts	147	549	616	14,098	13,456	N	0	0	N	N
New Hampshire	90	71	201	2,788	2,131	—	0	1	1	2
Rhode Island	—	82	496	2,314	1,946	—	0	1	—	—
Vermont	15	25	102	567	883	N	0	0	N	N
Mid. Atlantic	2,057	4,035	5,099	110,024	101,342	—	0	0	—	—
New Jersey	175	673	763	16,163	17,609	N	0	0	N	N
New York (Upstate)	678	850	2,358	21,744	20,378	N	0	0	N	N
New York City	527	1,349	1,594	36,556	33,885	N	0	0	N	N
Pennsylvania	677	1,108	2,005	35,561	29,470	N	0	0	N	N
E.N. Central	1,054	4,427	5,214	100,926	121,507	—	1	4	20	46
Illinois	46	1,212	1,501	21,476	37,561	N	0	0	N	N
Indiana	232	625	981	17,110	15,964	N	0	0	N	N
Michigan	92	825	1,095	20,063	23,137	—	0	2	10	25
Ohio	475	1,180	1,275	29,541	31,209	—	0	4	10	13
Wisconsin	209	514	633	12,736	13,636	—	0	2	—	8
W.N. Central	244	1,896	2,130	46,907	48,091	—	1	2	14	66
Iowa	1	256	302	6,364	6,529	N	0	0	N	N
Kansas	17	250	298	6,591	6,146	N	0	0	N	N
Minnesota	2	441	524	10,539	11,550	—	0	2	—	42
Missouri	156	629	750	16,157	15,545	—	0	2	7	14
Nebraska	55	158	274	4,077	4,227	—	0	1	5	4
North Dakota	6	61	77	1,429	1,850	—	0	1	2	6
South Dakota	7	81	119	1,750	2,244	N	0	0	N	N
S. Atlantic	2,050	5,826	11,499	137,818	169,782	—	0	2	4	5
Delaware	78	102	197	2,813	2,579	—	0	1	—	1
District of Columbia	—	145	318	3,133	3,516	—	0	0	—	—
Florida	959	1,864	2,771	50,098	48,652	N	0	0	N	N
Georgia	252	1,224	1,424	30,698	32,981	N	0	0	N	N
Maryland	242	508	1,343	11,998	14,076	—	0	2	4	4
North Carolina	1	1,116	1,317	21,004	29,460	N	0	0	N	N
South Carolina	478	583	767	15,878	15,161	N	0	0	N	N
Virginia	—	0	4,710	—	20,874	N	0	0	N	N
West Virginia	40	90	130	2,196	2,483	N	0	0	N	N
E.S. Central	1,094	1,816	2,485	45,267	49,209	—	0	1	2	—
Alabama	320	480	703	12,579	15,140	N	0	0	N	N
Kentucky	389	373	714	9,659	7,534	—	0	1	2	—
Mississippi	231	325	711	6,678	10,222	N	0	0	N	N
Tennessee	154	658	912	16,351	16,313	N	0	0	N	N
W.S. Central	2,800	4,222	5,409	110,509	108,373	—	0	3	2	9
Arkansas	—	269	549	5,985	7,940	—	0	1	1	1
Louisiana	589	711	1,685	19,478	14,556	—	0	3	1	8
Oklahoma	25	361	472	7,542	11,236	N	0	0	N	N
Texas	2,186	2,859	4,086	77,504	74,641	N	0	0	N	N
Mountain	1,096	2,091	2,714	52,644	55,934	96	114	159	2,957	3,237
Arizona	546	670	1,092	17,726	17,028	96	110	155	2,861	3,159
Colorado	273	488	790	12,625	14,018	N	0	0	N	N
Idaho	55	108	166	2,186	3,026	N	0	0	N	N
Montana	—	78	158	1,106	2,240	—	0	2	6	7
Nevada	93	276	433	6,643	7,123	—	2	6	60	40
New Mexico	24	254	391	6,362	6,536	—	0	2	2	16
Utah	86	188	231	5,080	4,902	—	1	4	26	14
Wyoming	19	35	55	916	1,061	—	0	1	2	1
Pacific	2,106	5,108	5,737	131,330	132,619	—	88	224	1,584	1,633
Alaska	—	111	142	2,365	2,863	N	0	0	N	N
California	1,524	3,942	4,446	104,095	101,407	—	88	224	1,580	1,626
Hawaii	—	130	179	3,062	3,451	N	0	0	N	N
Oregon	319	344	545	9,417	8,940	—	0	2	4	7
Washington	263	519	819	12,391	15,958	N	0	0	N	N
Territories										
American Samoa	—	0	0	—	—	N	0	0	N	N
C.N.M.I.	—	—	—	—	—	—	—	—	—	—
Guam	—	0	0	—	—	—	0	0	—	—
Puerto Rico	—	124	350	3,750	4,245	N	0	0	N	N
U.S. Virgin Islands	—	7	17	46	364	—	0	0	—	—

C.N.M.I.: Commonwealth of Northern Mariana Islands.

U: Unavailable. —: No reported cases. N: Not reportable. NN: Not Nationally Notifiable. NP: Nationally notifiable but not published. Cum: Cumulative year-to-date counts. Med: Median. Max: Maximum.

* Three low incidence conditions, rubella, rubella congenital, and tetanus, are in Table II to facilitate case count verification with reporting jurisdictions.

[†] Case counts for reporting years 2016 and 2017 are provisional and subject to change. For further information on interpretation of these data, see <http://www.cdc.gov/nndss/document/ProvisionalNationalNotifiableDiseasesSurveillanceData20100927.pdf>. Data for tuberculosis are displayed in Table III, which appears quarterly.

Morbidity and Mortality Weekly Report

TABLE II. (Continued) Provisional cases of selected notifiable diseases (≥1,000 cases reported during the preceding year), and selected* low frequency diseases, United States and U.S. territories, weeks ending July 8, 2017, and July 9, 2016 (27th week)[†] (Export data)

Reporting area	Cryptosporidiosis					Dengue Virus Infections									
	Current week	Previous 52 weeks		Cum 2017	Cum 2016	Dengue [§]					Severe Dengue				
		Med	Max			Current week	Previous 52 weeks	Cum 2017	Cum 2016	Current week	Previous 52 weeks	Cum 2017	Cum 2016		
United States	41	152	757	3,212	4,032	—	6	38	56	527	—	0	1	—	6
New England	—	8	24	169	161	—	0	2	—	17	—	0	0	—	—
Connecticut	—	1	6	31	23	—	0	1	—	5	—	0	0	—	—
Maine	—	1	5	25	21	—	0	1	—	1	—	0	0	—	—
Massachusetts	—	3	14	64	75	—	0	2	—	5	—	0	0	—	—
New Hampshire	—	1	8	19	25	—	0	1	—	2	—	0	0	—	—
Rhode Island	—	0	2	8	5	—	0	1	—	2	—	0	0	—	—
Vermont	—	1	11	22	12	—	0	1	—	2	—	0	0	—	—
Mid. Atlantic	6	18	73	352	366	—	1	10	9	117	—	0	1	—	3
New Jersey	—	2	23	30	48	—	0	5	1	25	—	0	1	—	3
New York (Upstate)	3	5	25	98	100	—	0	3	2	25	—	0	0	—	—
New York City	—	4	12	77	50	—	0	7	4	56	—	0	0	—	—
Pennsylvania	3	6	27	147	168	—	0	2	2	11	—	0	0	—	—
E.N. Central	11	34	301	705	796	—	0	8	12	39	—	0	0	—	1
Illinois	—	5	50	105	100	—	0	4	1	17	—	0	0	—	—
Indiana	—	3	10	54	102	—	0	2	—	3	—	0	0	—	1
Michigan	—	6	25	149	161	—	0	2	2	8	—	0	0	—	—
Ohio	10	11	207	197	170	—	0	2	3	6	—	0	0	—	—
Wisconsin	1	12	55	200	263	—	0	1	6	5	—	0	0	—	—
W.N. Central	3	21	137	418	786	—	0	9	1	29	—	0	0	—	—
Iowa	—	8	65	155	216	—	0	5	—	5	—	0	0	—	—
Kansas	—	2	7	27	59	—	0	1	1	2	—	0	0	—	—
Minnesota	—	1	31	—	177	—	0	2	—	15	—	0	0	—	—
Missouri	1	5	23	105	146	—	0	2	—	4	—	0	0	—	—
Nebraska	2	3	16	65	82	—	0	1	—	—	—	0	0	—	—
North Dakota	—	0	5	20	23	—	0	1	—	2	—	0	0	—	—
South Dakota	—	2	7	46	83	—	0	1	—	1	—	0	0	—	—
S. Atlantic	5	23	75	480	639	—	1	9	6	99	—	0	0	—	1
Delaware	—	0	2	2	11	—	0	1	—	1	—	0	0	—	—
District of Columbia	—	0	2	—	—	—	0	1	2	12	—	0	0	—	—
Florida	—	10	31	175	218	—	0	4	2	35	—	0	0	—	—
Georgia	4	7	22	160	128	—	0	2	2	12	—	0	0	—	—
Maryland	1	1	10	26	36	—	0	1	—	8	—	0	0	—	—
North Carolina	—	3	17	36	95	—	0	3	—	7	—	0	0	—	—
South Carolina	—	1	8	16	43	—	0	3	—	11	—	0	0	—	1
Virginia	—	3	15	61	97	—	0	3	—	13	—	0	0	—	—
West Virginia	—	0	7	4	11	—	0	0	—	—	—	0	0	—	—
E.S. Central	—	9	41	180	245	—	0	2	5	8	—	0	0	—	—
Alabama	—	5	25	68	91	—	0	1	—	1	—	0	0	—	—
Kentucky	—	2	7	31	67	—	0	0	—	2	—	0	0	—	—
Mississippi	—	1	3	23	23	—	0	2	2	—	—	0	0	—	—
Tennessee	—	3	10	58	64	—	0	2	3	5	—	0	0	—	—
W.S. Central	13	19	92	311	391	—	0	5	3	20	—	0	1	—	1
Arkansas	—	1	4	36	34	—	0	0	—	3	—	0	0	—	—
Louisiana	—	1	7	12	51	—	0	2	—	2	—	0	0	—	—
Oklahoma	2	2	60	42	67	—	0	1	—	4	—	0	0	—	—
Texas	11	14	33	221	239	—	0	4	3	11	—	0	1	—	1
Mountain	1	12	118	273	314	—	0	5	1	29	—	0	1	—	—
Arizona	—	3	82	45	27	—	0	2	—	6	—	0	0	—	—
Colorado	—	3	14	71	75	—	0	2	—	10	—	0	0	—	—
Idaho	1	1	7	37	57	—	0	1	1	2	—	0	0	—	—
Montana	—	1	6	38	34	—	0	0	—	2	—	0	0	—	—
Nevada	—	0	2	11	7	—	0	2	—	1	—	0	1	—	—
New Mexico	—	1	7	16	33	—	0	0	—	5	—	0	0	—	—
Utah	—	2	23	55	72	—	0	1	—	3	—	0	0	—	—
Wyoming	—	0	3	—	9	—	0	0	—	—	—	0	0	—	—
Pacific	2	13	143	324	334	—	2	13	19	166	—	0	1	—	—
Alaska	—	0	2	3	5	—	0	2	—	1	—	0	0	—	—
California	—	7	18	164	177	—	1	13	9	94	—	0	0	—	—
Hawaii	—	0	3	1	—	—	0	1	4	53	—	0	0	—	—
Oregon	2	5	26	111	152	—	0	1	—	8	—	0	0	—	—
Washington	—	0	131	45	—	—	0	2	6	10	—	0	1	—	—
Territories															
American Samoa	N	0	0	N	N	—	0	4	27	—	—	0	0	—	—
C.N.M.I.	—	—	—	—	—	—	—	—	—	—	—	—	—	—	—
Guam	—	0	0	—	—	—	0	1	—	—	—	0	0	—	—
Puerto Rico	—	0	1	—	—	—	1	7	9	158	—	0	0	—	—
U.S. Virgin Islands	—	0	0	—	—	—	0	1	1	10	—	0	0	—	—

C.N.M.I.: Commonwealth of Northern Mariana Islands.

U: Unavailable. —: No reported cases. N: Not reportable. NN: Not Nationally Notifiable. NP: Nationally notifiable but not published. Cum: Cumulative year-to-date counts. Med: Median. Max: Maximum.

* Three low incidence conditions, rubella, rubella congenital, and tetanus, are in Table II to facilitate case count verification with reporting jurisdictions.

[†] Case counts for reporting years 2016 and 2017 are provisional and subject to change. For further information on interpretation of these data, see <http://www.cdc.gov/nndss/document/ProvisionalNationalNotifiableDiseasesSurveillanceData20100927.pdf>. Data for tuberculosis are displayed in Table III, which appears quarterly.

[§] Includes data for dengue and dengue-like illness.

Morbidity and Mortality Weekly Report

TABLE II. (Continued) Provisional cases of selected notifiable diseases (≥1,000 cases reported during the preceding year), and selected* low frequency diseases, United States and U.S. territories, weeks ending July 8, 2017, and July 9, 2016 (27th week)[†] (Export data)

Reporting area	Ehrlichiosis and Anaplasmosis [§]														
	<i>Ehrlichia chaffeensis</i>					<i>Anaplasma phagocytophilum</i>					Undetermined				
	Current week	Previous 52 weeks		Cum 2017	Cum 2016	Current week	Previous 52 weeks		Cum 2017	Cum 2016	Current week	Previous 52 weeks		Cum 2017	Cum 2016
	Med	Max				Med	Max				Med	Max			
United States	16	15	139	461	604	98	58	235	1,553	1,976	3	2	17	48	90
New England	—	1	7	13	35	32	29	104	766	775	1	0	2	5	3
Connecticut	—	0	0	—	1	—	1	8	—	37	N	0	0	N	N
Maine	—	0	1	2	1	28	5	33	216	113	—	0	1	1	2
Massachusetts	—	0	2	3	7	—	10	58	445	461	—	0	0	—	—
New Hampshire	—	0	1	1	5	—	0	2	3	48	—	0	0	—	—
Rhode Island	—	0	6	3	20	—	1	18	13	48	—	0	0	—	—
Vermont	—	0	1	4	1	4	3	26	89	68	1	0	1	4	1
Mid. Atlantic	1	3	65	51	70	62	13	74	518	340	2	0	5	11	16
New Jersey	—	1	7	15	43	—	2	8	53	63	—	0	2	1	3
New York (Upstate)	1	2	64	30	25	60	11	70	447	245	1	0	3	8	8
New York City	—	0	3	6	1	2	0	4	18	20	1	0	1	2	—
Pennsylvania	—	0	2	—	1	—	0	10	—	12	—	0	2	—	5
E.N. Central	—	1	6	26	50	—	8	43	223	357	—	1	7	19	32
Illinois	—	0	2	6	26	—	0	2	1	4	—	0	0	—	—
Indiana	—	0	0	—	—	—	0	0	—	—	—	0	2	2	10
Michigan	—	0	2	—	5	—	0	1	1	3	—	0	0	—	—
Ohio	—	0	2	7	5	—	0	2	1	1	—	0	0	—	—
Wisconsin	—	0	4	13	14	—	8	42	220	349	—	0	5	17	22
W.N. Central	6	4	22	149	152	2	2	63	14	473	—	0	8	5	29
Iowa	—	0	1	1	2	—	0	1	2	2	—	0	1	1	1
Kansas	—	0	5	16	35	—	0	1	—	3	—	0	0	—	1
Minnesota	—	0	2	—	4	—	0	60	—	456	—	0	6	—	20
Missouri	6	3	20	132	109	2	0	2	7	2	—	0	2	4	4
Nebraska	—	0	2	—	1	—	0	1	—	1	—	0	0	—	—
North Dakota	—	0	1	—	1	—	0	2	5	8	—	0	1	—	3
South Dakota	—	0	0	—	—	—	0	1	—	1	—	0	0	—	—
S. Atlantic	1	2	20	63	121	1	1	4	17	22	—	0	1	3	4
Delaware	—	0	3	9	8	—	0	1	2	3	—	0	1	—	—
District of Columbia	—	0	1	—	2	N	0	0	N	N	—	0	0	—	—
Florida	—	0	2	6	15	—	0	1	3	4	—	0	0	—	—
Georgia	—	0	2	1	9	—	0	0	—	—	—	0	1	1	1
Maryland	—	0	4	17	21	1	0	1	4	5	—	0	1	1	—
North Carolina	—	0	4	17	35	—	0	2	2	7	—	0	0	—	—
South Carolina	—	0	0	—	—	—	0	0	—	—	—	0	0	—	1
Virginia	1	0	11	13	28	—	0	2	6	3	—	0	1	1	2
West Virginia	—	0	1	—	3	—	0	0	—	—	—	0	0	—	—
E.S. Central	4	2	12	66	76	1	0	3	11	5	—	0	2	1	5
Alabama	1	0	1	4	5	—	0	1	3	2	—	0	0	—	3
Kentucky	3	1	7	34	28	—	0	1	1	—	—	0	1	—	—
Mississippi	—	0	2	3	5	—	0	0	—	—	—	0	0	—	—
Tennessee	—	1	10	25	38	1	0	3	7	3	—	0	2	1	2
W.S. Central	4	3	67	93	98	—	0	5	2	2	—	0	1	—	—
Arkansas	4	3	16	84	91	—	0	5	1	2	—	0	0	—	—
Louisiana	—	0	1	—	1	—	0	0	—	—	—	0	0	—	—
Oklahoma	—	0	60	2	1	—	0	3	—	—	—	0	0	—	—
Texas	—	0	2	7	5	—	0	1	1	—	—	0	1	—	—
Mountain	—	0	0	—	1	—	0	1	2	—	—	0	1	2	1
Arizona	—	0	0	—	—	—	0	0	—	—	—	0	1	2	1
Colorado	N	0	0	N	N	N	0	0	N	N	N	0	0	N	N
Idaho	N	0	0	N	N	N	0	0	N	N	N	0	0	N	N
Montana	—	0	0	—	1	—	0	1	1	—	—	0	0	—	—
Nevada	—	0	0	—	—	—	0	0	—	—	—	0	0	—	—
New Mexico	N	0	0	N	N	N	0	0	N	N	N	0	0	N	N
Utah	—	0	0	—	—	—	0	1	1	—	—	0	0	—	—
Wyoming	—	0	0	—	—	—	0	1	—	—	—	0	0	—	—
Pacific	—	0	1	—	1	—	0	2	—	2	—	0	2	2	—
Alaska	N	0	0	N	N	N	0	0	N	N	N	0	0	N	N
California	—	0	0	—	—	—	0	1	—	2	—	0	2	2	—
Hawaii	N	0	0	N	N	N	0	0	N	N	N	0	0	N	N
Oregon	—	0	1	—	1	—	0	2	—	—	—	0	0	—	—
Washington	—	0	0	—	—	—	0	0	—	—	—	0	0	—	—
Territories															
American Samoa	N	0	0	N	N	N	0	0	N	N	N	0	0	N	N
C.N.M.I.	—	—	—	—	—	—	—	—	—	—	—	—	—	—	—
Guam	N	0	0	N	N	N	0	0	N	N	N	0	0	N	N
Puerto Rico	N	0	0	N	N	N	0	0	N	N	N	0	0	N	N
U.S. Virgin Islands	—	0	0	—	—	—	0	0	—	—	—	0	0	—	—

C.N.M.I.: Commonwealth of Northern Mariana Islands.

U: Unavailable. —: No reported cases. N: Not reportable. NN: Not Nationally Notifiable. NP: Nationally notifiable but not published. Cum: Cumulative year-to-date counts. Med: Median. Max: Maximum.

* Three low incidence conditions, rubella, rubella congenital, and tetanus, are in Table II to facilitate case count verification with reporting jurisdictions.

† Case counts for reporting years 2016 and 2017 are provisional and subject to change. For further information on interpretation of these data, see

<http://wwwn.cdc.gov/nndss/document/ProvisionalNationallyNotifiableDiseasesSurveillanceData20100927.pdf>. Data for tuberculosis are displayed in Table III, which appears quarterly.

§ Cumulative total *E. ewingii* cases reported for year 2017 = 12, and 22 cases reported for 2016.

Morbidity and Mortality Weekly Report

TABLE II. (Continued) Provisional cases of selected notifiable diseases (≥1,000 cases reported during the preceding year), and selected* low frequency diseases, United States and U.S. territories, weeks ending July 8, 2017, and July 9, 2016 (27th week)[†] (Export data)

Reporting area	Giardiasis					Gonorrhea					Haemophilus influenzae, invasive [§] (all ages, all serotypes)				
	Current week	Previous 52 weeks		Cum 2017	Cum 2016	Current week	Previous 52 weeks		Cum 2017	Cum 2016	Current week	Previous 52 weeks		Cum 2017	Cum 2016
		Med	Max				Med	Max				Med	Max		
United States	81	259	982	5,971	7,061	4,480	9,348	12,294	235,695	225,079	34	93	215	2,569	2,704
New England	3	20	36	396	553	54	206	440	5,698	4,133	8	5	17	137	156
Connecticut	—	4	11	85	125	4	60	130	1,396	1,110	—	1	4	24	34
Maine	3	2	8	40	61	1	8	31	246	253	1	0	2	16	15
Massachusetts	—	10	21	217	279	46	119	159	3,329	2,253	—	2	10	72	85
New Hampshire	—	1	5	35	58	1	10	24	265	185	—	0	2	9	11
Rhode Island	—	1	9	19	30	—	9	213	398	258	7	0	12	10	4
Vermont	N	0	0	N	N	2	2	10	64	74	—	0	2	6	7
Mid. Atlantic	35	50	98	1,124	1,366	587	1,111	1,355	30,148	24,498	2	14	26	382	400
New Jersey	—	7	17	126	228	62	168	203	4,248	4,007	—	3	7	65	69
New York (Upstate)	15	15	42	339	426	163	197	531	5,019	4,445	2	4	15	132	123
New York City	17	18	34	460	446	202	419	512	11,595	8,914	—	2	6	55	65
Pennsylvania	3	10	36	199	266	160	306	535	9,286	7,132	—	5	11	130	143
E.N. Central	5	27	150	568	713	427	1,373	1,603	31,150	33,856	3	15	36	410	448
Illinois	N	0	0	N	N	14	358	515	5,819	10,288	—	4	12	98	112
Indiana	—	3	9	49	101	87	200	284	5,454	4,649	—	2	9	43	59
Michigan	1	9	26	193	234	23	246	337	5,361	5,787	—	3	8	98	103
Ohio	2	5	135	173	170	222	421	484	11,191	9,904	3	4	8	123	97
Wisconsin	2	8	106	153	208	81	133	158	3,325	3,228	—	2	6	48	77
W.N. Central	4	20	67	336	736	199	565	644	14,969	13,063	—	6	18	153	235
Iowa	—	5	13	80	103	—	57	76	1,482	1,294	—	0	0	—	—
Kansas	—	2	8	38	54	23	77	103	2,136	1,509	—	1	5	30	38
Minnesota	—	2	29	—	281	4	112	136	2,946	2,459	—	1	7	5	61
Missouri	3	6	16	112	162	154	238	298	6,399	5,586	—	2	9	77	90
Nebraska	1	2	9	55	60	18	46	77	1,254	1,068	—	0	4	23	21
North Dakota	—	0	4	13	23	—	16	34	347	494	—	0	3	10	12
South Dakota	—	2	6	38	53	—	22	36	405	653	—	0	2	8	13
S. Atlantic	7	48	75	1,067	1,351	749	1,886	3,743	44,126	50,158	5	20	39	609	670
Delaware	—	0	3	6	9	29	34	59	871	774	—	0	3	13	12
District of Columbia	—	0	2	—	7	—	70	147	1,621	1,384	—	0	1	1	10
Florida	—	20	34	518	597	311	588	903	15,529	13,805	5	4	11	153	211
Georgia	3	13	23	302	370	122	412	487	10,601	10,069	—	3	10	107	117
Maryland	—	4	11	85	108	83	166	398	3,826	4,066	—	2	11	62	69
North Carolina	—	0	0	—	—	—	385	440	5,440	9,632	—	3	10	83	108
South Carolina	—	2	8	38	66	187	201	289	5,574	4,685	—	2	10	103	52
Virginia	4	4	23	104	152	—	0	1,530	—	5,325	—	2	15	69	69
West Virginia	—	1	5	14	42	17	21	38	664	418	—	1	3	18	22
E.S. Central	—	4	10	78	119	412	647	840	16,523	15,016	5	7	12	197	198
Alabama	—	4	10	78	119	147	161	268	4,509	4,419	—	1	4	37	50
Kentucky	N	0	0	N	N	134	129	275	3,412	2,244	1	2	6	46	23
Mississippi	N	0	0	N	N	76	140	224	3,058	3,370	—	1	4	32	35
Tennessee	N	0	0	N	N	55	217	343	5,544	4,983	4	3	7	82	90
W.S. Central	2	5	21	71	147	957	1,339	1,710	35,108	32,585	6	10	48	306	265
Arkansas	2	3	18	62	61	—	95	215	2,187	2,518	1	1	4	37	26
Louisiana	—	2	12	9	86	201	228	517	6,416	4,903	—	1	4	35	39
Oklahoma	N	0	0	N	N	14	141	196	3,143	3,784	2	1	8	56	47
Texas	N	0	0	N	N	742	862	1,219	23,362	21,380	3	6	38	178	153
Mountain	6	24	42	526	530	316	564	768	14,649	13,212	2	8	18	246	222
Arizona	2	3	6	71	69	138	211	326	5,227	4,814	—	2	8	86	75
Colorado	—	10	16	213	195	88	133	178	3,376	2,724	—	1	5	46	43
Idaho	3	3	13	69	73	19	14	39	448	368	1	0	3	15	19
Montana	—	2	8	47	47	—	12	26	174	506	1	0	3	16	10
Nevada	—	1	4	16	37	27	87	127	2,126	2,027	—	1	3	24	22
New Mexico	—	2	9	37	29	14	71	130	1,935	1,618	—	1	3	27	34
Utah	1	3	9	73	58	29	44	60	1,219	1,026	—	1	4	32	18
Wyoming	—	0	3	—	22	1	6	13	144	129	—	0	2	—	1
Pacific	19	67	727	1,805	1,546	779	1,650	2,000	43,324	38,558	3	4	13	129	110
Alaska	—	2	5	28	26	—	33	54	819	650	—	0	1	7	12
California	8	55	78	1,393	1,332	595	1,352	1,590	36,020	31,104	—	1	3	29	23
Hawaii	—	1	4	35	27	1	27	50	649	699	—	0	3	17	24
Oregon	3	5	18	132	161	67	90	130	2,392	2,032	3	2	7	73	51
Washington	8	0	672	217	—	116	143	208	3,444	4,073	—	0	9	3	—
Territories															
American Samoa	—	0	0	—	—	—	0	0	—	—	—	0	0	—	—
C.N.M.I.	—	—	—	—	—	—	—	—	—	—	—	—	—	—	—
Guam	—	0	0	—	—	—	0	0	—	—	—	0	0	—	—
Puerto Rico	—	0	3	3	12	—	11	24	242	390	—	0	2	3	5
U.S. Virgin Islands	—	0	0	—	—	—	0	3	1	20	—	0	0	—	—

C.N.M.I.: Commonwealth of Northern Mariana Islands.

U: Unavailable. —: No reported cases. N: Not reportable. NN: Not Nationally Notifiable. NP: Nationally notifiable but not published. Cum: Cumulative year-to-date counts. Med: Median. Max: Maximum.

* Three low incidence conditions, rubella, rubella congenital, and tetanus, are in Table II to facilitate case count verification with reporting jurisdictions.

[†] Case counts for reporting years 2016 and 2017 are provisional and subject to change. For further information on interpretation of these data, see

<http://www.cdc.gov/nndss/document/ProvisionalNationallyNotifiableDiseasesSurveillanceData20100927.pdf>. Data for tuberculosis are displayed in Table III, which appears quarterly.

[§] Data for *Haemophilus influenzae* (age <5 for serotype b, non typeable, non-b serotype, and unknown serotype) are available in Table I.

Morbidity and Mortality Weekly Report

TABLE II. (Continued) Provisional cases of selected notifiable diseases (≥1,000 cases reported during the preceding year), and selected* low frequency diseases, United States and U.S. territories, weeks ending July 8, 2017, and July 9, 2016 (27th week)[†] (Export data)

Reporting area	Hepatitis (viral, acute, by type)									
	A					B				
	Current week	Previous 52 weeks		Cum 2017	Cum 2016	Current week	Previous 52 weeks		Cum 2017	Cum 2016
	Med	Max				Med	Max			
United States	8	36	104	868	778	18	60	144	1,495	1,584
New England	—	2	5	30	39	1	2	5	54	48
Connecticut	—	0	3	7	4	—	0	1	4	5
Maine	—	0	1	2	2	1	1	3	38	20
Massachusetts	—	1	4	17	25	—	0	3	12	21
New Hampshire	—	0	1	2	2	—	0	0	—	—
Rhode Island	—	0	1	—	3	U	0	0	U	U
Vermont	—	0	1	2	3	—	0	0	—	2
Mid. Atlantic	3	5	11	122	103	—	4	9	79	103
New Jersey	—	1	4	21	36	—	1	4	11	28
New York (Upstate)	—	1	4	23	24	—	0	4	13	17
New York City	2	1	6	51	23	—	1	4	27	38
Pennsylvania	1	1	4	27	20	—	1	3	28	20
E.N. Central	—	6	15	188	89	10	10	20	279	293
Illinois	—	1	5	22	33	—	0	3	12	24
Indiana	—	0	2	6	11	—	3	10	93	69
Michigan	—	4	13	142	27	—	1	4	25	25
Ohio	—	0	7	13	18	10	5	14	136	169
Wisconsin	—	0	2	5	—	—	0	3	13	6
W.N. Central	1	1	5	12	39	—	2	5	40	50
Iowa	—	0	2	4	8	—	0	2	7	6
Kansas	—	0	1	3	3	—	0	3	13	10
Minnesota	—	0	2	—	7	—	0	2	—	7
Missouri	1	0	1	4	10	—	1	3	16	20
Nebraska	—	0	4	1	8	—	0	2	4	4
North Dakota	—	0	0	—	2	—	0	1	—	1
South Dakota	—	0	0	—	1	—	0	0	—	2
S. Atlantic	—	7	54	180	167	—	21	33	536	621
Delaware	—	0	1	1	—	—	0	1	7	1
District of Columbia	U	0	0	U	U	U	0	0	U	U
Florida	—	3	8	103	48	—	11	19	267	268
Georgia	—	0	5	19	20	—	2	7	51	58
Maryland	—	0	5	13	11	—	1	2	16	15
North Carolina	—	1	5	11	27	—	2	10	45	88
South Carolina	—	0	4	11	10	—	0	4	7	16
Virginia	—	1	41	17	48	—	1	5	43	27
West Virginia	—	0	4	5	3	—	4	12	100	148
E.S. Central	2	0	4	12	19	5	11	18	282	253
Alabama	1	0	2	5	12	—	1	5	42	39
Kentucky	1	0	1	4	4	4	4	11	114	98
Mississippi	—	0	1	2	2	—	1	3	20	10
Tennessee	—	0	2	1	1	1	4	9	106	106
W.S. Central	—	3	8	58	84	1	4	34	113	101
Arkansas	—	0	3	3	3	1	1	5	26	23
Louisiana	—	0	1	4	9	—	1	6	39	26
Oklahoma	—	0	4	1	5	—	0	15	6	5
Texas	—	2	7	50	67	—	2	15	42	47
Mountain	2	2	11	98	48	—	1	4	39	37
Arizona	1	1	5	40	16	—	0	2	11	9
Colorado	—	0	7	31	12	—	0	2	7	11
Idaho	—	0	1	2	3	—	0	2	5	5
Montana	—	0	1	3	1	—	0	1	1	1
Nevada	—	0	2	6	9	—	0	3	11	10
New Mexico	—	0	1	2	1	—	0	1	—	—
Utah	1	0	2	8	6	—	0	1	4	1
Wyoming	—	0	3	6	—	U	0	0	U	U
Pacific	—	7	47	168	190	1	2	47	73	78
Alaska	—	0	1	—	—	—	0	1	3	5
California	—	5	12	144	117	1	2	5	44	66
Hawaii	—	0	41	4	64	—	0	0	—	—
Oregon	—	0	3	15	9	—	0	3	9	7
Washington	—	0	31	5	—	—	0	45	17	—
Territories										
American Samoa	—	0	0	—	—	—	0	0	—	—
C.N.M.I.	—	—	—	—	—	—	—	—	—	—
Guam	—	0	1	—	1	—	0	0	—	—
Puerto Rico	—	0	1	2	18	—	0	1	1	11
U.S. Virgin Islands	—	0	0	—	—	—	0	0	—	—

C.N.M.I.: Commonwealth of Northern Mariana Islands.

U: Unavailable. —: No reported cases. N: Not reportable. NN: Not Nationally Notifiable. NP: Nationally notifiable but not published. Cum: Cumulative year-to-date counts. Med: Median. Max: Maximum.

* Three low incidence conditions, rubella, rubella congenital, and tetanus, are in Table II to facilitate case count verification with reporting jurisdictions.

[†] Case counts for reporting years 2016 and 2017 are provisional and subject to change. For further information on interpretation of these data, see <http://www.cdc.gov/nndss/document/ProvisionalNationallyNotifiableDiseasesSurveillanceData20100927.pdf>. Data for tuberculosis are displayed in Table III, which appears quarterly.

Morbidity and Mortality Weekly Report

TABLE II. (Continued) Provisional cases of selected notifiable diseases (≥1,000 cases reported during the preceding year), and selected* low frequency diseases, United States and U.S. territories, weeks ending July 8, 2017, and July 9, 2016 (27th week)[†] (Export data)

Reporting area	Hepatitis (viral, acute, by type) [§] (Continued)									
	C (confirmed)					C (probable)				
	Current week	Previous 52 weeks		Cum 2017	Cum 2016	Current week	Previous 52 weeks		Cum 2017	Cum 2016
	Med	Max				Med	Max			
United States	4	44	133	974	1,614	3	19	80	459	528
New England	1	5	17	105	293	—	2	7	29	68
Connecticut	—	0	1	3	14	—	0	0	—	—
Maine	1	0	3	14	9	—	0	1	4	8
Massachusetts	—	5	16	86	265	—	1	7	25	60
New Hampshire	—	0	0	—	—	—	0	0	—	—
Rhode Island	—	0	0	—	—	—	0	0	—	—
Vermont	—	0	1	2	5	—	0	0	—	—
Mid. Atlantic	1	7	21	132	282	1	0	3	19	13
New Jersey	—	1	5	21	70	—	0	0	—	—
New York (Upstate)	1	3	9	73	95	1	0	3	8	13
New York City	—	0	3	4	2	—	0	0	—	—
Pennsylvania	—	3	12	34	115	—	0	2	11	—
E.N. Central	1	9	17	198	307	2	3	8	80	84
Illinois	—	0	2	11	14	—	0	1	2	1
Indiana	—	2	7	62	80	—	1	3	22	17
Michigan	—	2	5	52	57	—	1	4	27	22
Ohio	1	3	7	66	104	2	1	4	29	44
Wisconsin	—	1	4	7	52	—	0	0	—	—
W.N. Central	—	2	5	36	58	—	0	1	6	3
Iowa	—	0	0	—	—	—	0	0	—	—
Kansas	—	0	2	9	6	—	0	1	1	1
Minnesota	—	0	3	—	26	—	0	0	—	1
Missouri	—	0	3	21	10	—	0	0	—	—
Nebraska	—	0	1	1	1	—	0	1	4	—
North Dakota	—	0	1	1	1	—	0	0	—	—
South Dakota	—	0	2	4	14	—	0	1	1	1
S. Atlantic	—	9	19	239	332	—	5	11	106	130
Delaware	—	0	0	—	—	—	0	0	—	—
District of Columbia	—	0	0	—	—	—	0	0	—	—
Florida	—	5	13	136	120	—	1	4	28	29
Georgia	—	1	5	17	55	—	0	4	12	15
Maryland	—	0	3	12	23	—	0	2	6	4
North Carolina	—	0	4	4	55	—	1	4	9	53
South Carolina	—	0	1	2	6	—	0	1	1	1
Virginia	—	0	4	24	25	—	0	5	12	12
West Virginia	—	2	6	44	48	—	1	5	38	16
E.S. Central	—	4	9	98	177	—	5	12	131	162
Alabama	—	0	3	11	25	—	0	3	14	33
Kentucky	—	1	8	26	57	—	3	9	78	81
Mississippi	—	0	0	—	—	—	0	0	—	—
Tennessee	—	2	6	61	95	—	2	5	39	48
W.S. Central	—	1	16	25	37	—	0	23	24	27
Arkansas	—	0	0	—	—	—	0	0	—	—
Louisiana	—	0	1	2	5	—	0	2	3	9
Oklahoma	—	0	12	6	12	—	0	23	9	18
Texas	—	0	4	17	20	—	0	2	12	—
Mountain	—	2	9	54	94	—	1	5	30	28
Arizona	—	0	0	—	—	—	0	0	—	—
Colorado	—	0	3	9	19	—	0	2	7	3
Idaho	—	0	1	4	3	—	0	1	2	2
Montana	—	0	2	7	12	—	0	1	1	—
Nevada	—	0	3	14	8	—	0	1	1	7
New Mexico	—	0	3	2	11	—	0	2	2	9
Utah	—	1	4	18	41	—	1	3	17	7
Wyoming	—	0	0	—	—	—	0	0	—	—
Pacific	1	2	62	87	34	—	0	33	34	13
Alaska	—	0	0	—	—	—	0	0	—	—
California	—	1	5	42	24	—	0	3	18	10
Hawaii	—	0	0	—	—	—	0	0	—	—
Oregon	1	0	3	19	10	—	0	1	6	3
Washington	—	0	62	26	—	—	0	33	10	—
Territories										
American Samoa	—	0	0	—	—	—	0	0	—	—
C.N.M.I.	—	—	—	—	—	—	—	—	—	—
Guam	—	0	0	—	—	—	0	0	—	—
Puerto Rico	—	0	0	—	—	—	0	0	—	—
U.S. Virgin Islands	—	0	0	—	—	—	0	0	—	—

C.N.M.I.: Commonwealth of Northern Mariana Islands.

U: Unavailable. —: No reported cases. N: Not reportable. NN: Not Nationally Notifiable. NP: Nationally notifiable but not published. Cum: Cumulative year-to-date counts. Med: Median. Max: Maximum.

* Three low incidence conditions, rubella, rubella congenital, and tetanus, are in Table II to facilitate case count verification with reporting jurisdictions.

[†] Case counts for reporting years 2016 and 2017 are provisional and subject to change. For further information on interpretation of these data, see <http://www.cdc.gov/nndss/document/ProvisionalNationalNotifiableDiseasesSurveillanceData20100927.pdf>. Data for tuberculosis are displayed in Table III, which appears quarterly.

[§] Based on the CSTE Position Statement 15-ID-03: Revision of the Case Definition of Hepatitis C for National Notification, acute hepatitis C is now reported by case classification status.

Morbidity and Mortality Weekly Report

TABLE II. (Continued) Provisional cases of selected notifiable diseases (≥1,000 cases reported during the preceding year), and selected* low frequency diseases, United States and U.S. territories, weeks ending July 8, 2017, and July 9, 2016 (27th week)[†] (Export data)

Reporting area	Invasive Pneumococcal Disease [§] (all ages)									
	Confirmed					Probable				
	Current week	Previous 52 weeks		Cum 2017	Cum 2016	Current week	Previous 52 weeks		Cum 2017	Cum 2016
	Med	Max				Med	Max			
United States	81	323	789	10,029	10,481	—	1	12	70	9
New England	4	25	51	733	646	—	0	2	2	—
Connecticut	—	5	18	154	129	—	0	2	2	—
Maine	3	2	10	83	81	—	0	0	—	—
Massachusetts	—	12	28	386	304	—	0	0	—	—
New Hampshire	1	1	6	53	63	—	0	0	—	—
Rhode Island	—	1	11	32	32	—	0	0	—	—
Vermont	—	1	5	25	37	—	0	0	—	—
Mid. Atlantic	23	52	129	1,413	1,627	—	0	8	32	—
New Jersey	2	7	22	158	351	—	0	2	9	—
New York (Upstate)	7	16	70	517	543	—	0	0	—	—
New York City	14	12	29	399	379	—	0	2	2	—
Pennsylvania	—	10	22	339	354	—	0	4	21	—
E.N. Central	14	56	108	1,749	1,908	—	0	2	6	5
Illinois	N	0	0	N	N	N	0	0	N	N
Indiana	—	11	33	327	413	—	0	0	—	—
Michigan	—	14	28	429	581	—	0	2	4	5
Ohio	13	19	52	702	650	—	0	2	2	—
Wisconsin	1	9	22	291	264	—	0	0	—	—
W.N. Central	6	27	47	755	682	—	0	3	12	2
Iowa	N	0	0	N	N	N	0	0	N	N
Kansas	2	5	14	170	128	—	0	1	—	—
Minnesota	—	1	14	—	293	—	0	0	—	—
Missouri	1	9	24	361	26	—	0	3	9	1
Nebraska	2	3	10	95	112	—	0	1	2	1
North Dakota	—	2	5	47	41	—	0	0	—	—
South Dakota	1	2	7	82	82	—	0	1	1	—
S. Atlantic	6	52	119	1,830	1,760	—	0	3	7	—
Delaware	—	1	6	46	43	—	0	0	—	—
District of Columbia	—	0	3	2	39	—	0	0	—	—
Florida	6	10	24	365	418	—	0	2	4	—
Georgia	—	17	39	559	571	—	0	0	—	—
Maryland	—	9	19	289	272	—	0	1	1	—
North Carolina	N	0	0	N	N	N	0	0	N	N
South Carolina	—	8	37	423	219	—	0	2	2	—
Virginia	—	0	2	16	17	—	0	0	—	—
West Virginia	—	4	13	130	181	—	0	0	—	—
E.S. Central	9	32	72	1,027	993	—	0	1	1	1
Alabama	—	6	26	168	212	—	0	0	—	—
Kentucky	1	4	17	206	148	—	0	1	1	1
Mississippi	1	6	11	135	136	—	0	0	—	—
Tennessee	7	16	38	518	497	—	0	1	—	—
W.S. Central	14	35	231	1,176	1,367	—	0	2	6	—
Arkansas	1	5	32	190	153	—	0	1	—	—
Louisiana	—	5	13	151	220	—	0	1	—	—
Oklahoma	N	0	0	N	N	N	0	0	N	N
Texas	13	26	189	835	994	—	0	2	6	—
Mountain	3	36	69	1,232	1,387	—	0	1	4	1
Arizona	1	11	28	424	509	—	0	1	2	—
Colorado	—	10	19	305	297	—	0	0	—	—
Idaho	N	0	0	N	N	N	0	0	N	N
Montana	—	2	4	49	65	—	0	1	2	1
Nevada	—	4	16	155	139	—	0	0	—	—
New Mexico	—	5	13	185	203	—	0	0	—	—
Utah	2	4	10	104	152	—	0	0	—	—
Wyoming	—	0	3	10	22	—	0	0	—	—
Pacific	2	4	11	114	111	—	0	0	—	—
Alaska	2	2	6	60	68	—	0	0	—	—
California	N	0	0	N	N	N	0	0	N	N
Hawaii	—	2	8	54	43	—	0	0	—	—
Oregon	N	0	0	N	N	N	0	0	N	N
Washington	N	0	0	N	N	N	0	0	N	N
Territories										
American Samoa	N	0	0	N	N	N	0	0	N	N
C.N.M.I.	—	—	—	—	—	—	—	—	—	—
Guam	—	0	0	—	—	—	0	0	—	—
Puerto Rico	—	0	0	—	—	—	0	0	—	—
U.S. Virgin Islands	—	0	0	—	—	—	0	0	—	—

C.N.M.I.: Commonwealth of Northern Mariana Islands.

U: Unavailable. —: No reported cases. N: Not reportable. NN: Not Nationally Notifiable. NP: Nationally notifiable but not published. Cum: Cumulative year-to-date counts. Med: Median. Max: Maximum.

* Three low incidence conditions, rubella, rubella congenital, and tetanus, are in Table II to facilitate case count verification with reporting jurisdictions.

[†] Case counts for reporting years 2016 and 2017 are provisional and subject to change. For further information on interpretation of these data, see <http://www.cdc.gov/nndss/document/ProvisionalNationalNotifiableDiseasesSurveillanceData20100927.pdf>. Data for tuberculosis are displayed in Table III, which appears quarterly.

[§] Includes drug resistant and susceptible cases of Invasive Pneumococcal Disease. This condition was previously named *Streptococcus pneumoniae* invasive disease and cases were reported to CDC using different event codes to specify whether the cases were drug resistant or in a defined age group, such as <5 years.

Morbidity and Mortality Weekly Report

TABLE II. (Continued) Provisional cases of selected notifiable diseases (≥1,000 cases reported during the preceding year), and selected* low frequency diseases, United States and U.S. territories, weeks ending July 8, 2017, and July 9, 2016 (27th week)[†] (Export data)

Reporting area	Invasive Pneumococcal Disease [§] (age <5)									
	Confirmed					Probable				
	Current week	Previous 52 weeks		Cum 2017	Cum 2016	Current week	Previous 52 weeks		Cum 2017	Cum 2016
	Med	Max				Med	Max			
United States	4	21	45	544	639	—	0	2	3	3
New England	—	1	3	23	36	—	0	0	—	—
Connecticut	—	0	2	5	6	—	0	0	—	—
Maine	—	0	1	2	6	—	0	0	—	—
Massachusetts	—	0	2	11	20	—	0	0	—	—
New Hampshire	—	0	1	3	1	—	0	0	—	—
Rhode Island	—	0	1	1	2	—	0	0	—	—
Vermont	—	0	1	1	1	—	0	0	—	—
Mid. Atlantic	—	2	9	62	78	—	0	0	—	—
New Jersey	—	0	2	7	13	—	0	0	—	—
New York (Upstate)	—	1	7	25	30	—	0	0	—	—
New York City	—	0	2	14	16	—	0	0	—	—
Pennsylvania	—	0	3	16	19	—	0	0	—	—
E.N. Central	2	3	9	101	93	—	0	1	1	1
Illinois	—	0	0	—	—	—	0	0	—	—
Indiana	—	0	3	19	7	—	0	0	—	—
Michigan	—	0	3	13	32	—	0	1	—	1
Ohio	2	1	5	44	39	—	0	1	1	—
Wisconsin	—	0	3	25	15	—	0	0	—	—
W.N. Central	1	1	5	38	49	—	0	1	1	1
Iowa	N	0	0	N	N	N	0	0	N	N
Kansas	—	0	2	11	8	—	0	0	—	—
Minnesota	—	0	2	—	19	—	0	0	—	—
Missouri	—	0	2	17	8	—	0	1	1	1
Nebraska	1	0	2	5	12	—	0	0	—	—
North Dakota	—	0	2	5	2	—	0	0	—	—
South Dakota	N	0	2	N	N	N	0	0	N	N
S. Atlantic	—	5	10	120	114	—	0	0	—	—
Delaware	—	0	1	2	1	—	0	0	—	—
District of Columbia	—	0	0	—	—	—	0	0	—	—
Florida	—	1	5	39	31	—	0	0	—	—
Georgia	—	1	6	27	37	—	0	0	—	—
Maryland	—	1	2	18	17	—	0	0	—	—
North Carolina	N	0	0	N	N	N	0	0	N	N
South Carolina	—	0	4	12	4	—	0	0	—	—
Virginia	—	0	2	16	17	—	0	0	—	—
West Virginia	—	0	2	6	7	—	0	0	—	—
E.S. Central	—	1	8	45	53	—	0	0	—	1
Alabama	—	0	3	10	17	—	0	0	—	—
Kentucky	—	0	2	8	4	—	0	0	—	1
Mississippi	—	0	2	7	10	—	0	0	—	—
Tennessee	—	0	7	20	22	—	0	0	—	—
W.S. Central	1	3	22	85	123	—	0	1	1	—
Arkansas	—	0	2	8	13	—	0	0	—	—
Louisiana	—	0	2	10	19	—	0	0	—	—
Oklahoma	—	0	3	6	9	—	0	0	—	—
Texas	1	2	19	61	82	—	0	1	1	—
Mountain	—	2	7	64	87	—	0	1	—	—
Arizona	—	1	2	17	32	—	0	0	—	—
Colorado	—	0	2	13	11	—	0	0	—	—
Idaho	—	0	1	5	4	—	0	1	—	—
Montana	—	0	2	4	3	—	0	0	—	—
Nevada	—	0	1	5	9	—	0	0	—	—
New Mexico	—	0	2	6	10	—	0	0	—	—
Utah	—	0	2	14	17	—	0	0	—	—
Wyoming	—	0	1	—	1	—	0	0	—	—
Pacific	—	0	2	6	6	—	0	0	—	—
Alaska	—	0	1	3	6	—	0	0	—	—
California	N	0	0	N	N	N	0	0	N	N
Hawaii	—	0	1	3	—	—	0	0	—	—
Oregon	N	0	0	N	N	N	0	0	N	N
Washington	N	0	0	N	N	N	0	0	N	N
Territories										
American Samoa	—	0	0	—	—	—	0	0	—	—
C.N.M.I.	—	—	—	—	—	—	—	—	—	—
Guam	—	0	0	—	—	—	0	0	—	—
Puerto Rico	—	0	0	—	—	—	0	0	—	—
U.S. Virgin Islands	—	0	0	—	—	—	0	0	—	—

C.N.M.I.: Commonwealth of Northern Mariana Islands.

U: Unavailable. —: No reported cases. N: Not reportable. NN: Not Nationally Notifiable. NP: Nationally notifiable but not published. Cum: Cumulative year-to-date counts. Med: Median. Max: Maximum.

* Three low incidence conditions, rubella, rubella congenital, and tetanus, are in Table II to facilitate case count verification with reporting jurisdictions.

[†] Case counts for reporting years 2016 and 2017 are provisional and subject to change. For further information on interpretation of these data, see <http://www.cdc.gov/nndss/document/ProvisionalNationalNotifiableDiseasesSurveillanceData20100927.pdf>. Data for tuberculosis are displayed in Table III, which appears quarterly.

[§] Includes drug resistant and susceptible cases of Invasive Pneumococcal Disease. This condition was previously named *Streptococcus pneumoniae* invasive disease and cases were reported to CDC using different event codes to specify whether the cases were drug resistant or in a defined age group, such as <5 years.

Morbidity and Mortality Weekly Report

TABLE II. (Continued) Provisional cases of selected notifiable diseases (≥1,000 cases reported during the preceding year), and selected* low frequency diseases, United States and U.S. territories, weeks ending July 8, 2017, and July 9, 2016 (27th week)[†] (Export data)

Reporting area	Legionellosis					Malaria				
	Current week	Previous 52 weeks		Cum 2017	Cum 2016	Current week	Previous 52 weeks		Cum 2017	Cum 2016
		Med	Max				Med	Max		
United States	91	124	236	2,232	2,009	14	31	102	645	775
New England	1	5	21	122	84	—	2	7	55	68
Connecticut	—	2	6	34	14	—	0	2	1	3
Maine	—	0	1	2	9	—	0	1	4	8
Massachusetts	—	3	11	61	38	—	2	6	42	45
New Hampshire	—	0	3	13	11	—	0	2	4	7
Rhode Island	—	0	9	6	9	—	0	3	3	2
Vermont	1	0	2	6	3	—	0	1	1	3
Mid. Atlantic	41	26	56	493	396	5	9	28	157	160
New Jersey	—	2	11	25	69	—	1	7	34	31
New York (Upstate)	9	9	26	178	120	—	1	8	23	28
New York City	24	4	22	124	77	5	4	14	70	70
Pennsylvania	8	7	20	166	130	—	1	4	30	31
E.N. Central	31	22	80	425	398	3	3	27	69	90
Illinois	—	4	17	64	98	—	1	5	18	29
Indiana	1	3	12	47	45	—	0	4	2	8
Michigan	2	4	30	79	70	1	1	4	21	21
Ohio	28	9	32	218	157	2	1	13	27	20
Wisconsin	—	2	8	17	28	—	0	1	1	12
W.N. Central	—	6	26	115	140	1	2	8	37	57
Iowa	—	1	3	16	14	—	0	3	7	7
Kansas	—	0	4	9	10	—	0	2	7	3
Minnesota	—	0	12	—	37	—	0	4	—	31
Missouri	—	2	12	72	69	1	0	3	14	7
Nebraska	—	0	3	10	4	—	0	1	2	2
North Dakota	—	0	2	3	3	—	0	2	5	3
South Dakota	—	0	1	5	3	—	0	1	2	4
S. Atlantic	6	23	39	460	414	4	8	22	198	211
Delaware	—	0	4	11	9	—	0	3	3	12
District of Columbia	—	0	0	—	—	—	0	3	2	6
Florida	—	7	13	158	127	—	0	4	21	24
Georgia	2	3	7	81	49	—	1	3	27	31
Maryland	1	2	12	67	56	4	3	15	117	87
North Carolina	—	4	11	51	89	—	0	4	15	20
South Carolina	—	0	4	8	22	—	0	3	1	4
Virginia	3	3	14	82	52	—	1	4	33	26
West Virginia	—	0	3	2	10	—	0	0	—	1
E.S. Central	1	6	13	143	129	—	1	4	14	22
Alabama	—	1	6	36	22	—	0	1	2	5
Kentucky	—	2	6	52	37	—	0	2	4	5
Mississippi	—	1	5	22	8	—	0	2	3	4
Tennessee	1	2	5	33	62	—	0	2	5	8
W.S. Central	3	7	39	156	120	—	2	29	43	61
Arkansas	1	1	6	23	18	—	0	2	2	1
Louisiana	—	0	2	4	11	—	0	1	1	8
Oklahoma	—	0	20	18	2	—	0	3	1	1
Texas	2	5	20	111	89	—	2	25	39	51
Mountain	2	4	14	99	95	—	1	5	16	40
Arizona	—	2	6	47	34	—	0	4	8	17
Colorado	2	1	6	21	22	—	0	2	1	11
Idaho	—	0	1	2	6	—	0	1	3	—
Montana	—	0	1	8	4	—	0	1	1	3
Nevada	—	0	4	10	11	—	0	1	—	4
New Mexico	—	0	3	3	6	—	0	1	—	2
Utah	—	0	3	7	11	—	0	3	3	2
Wyoming	—	0	1	1	1	—	0	1	—	1
Pacific	6	11	84	219	233	1	2	46	56	66
Alaska	—	0	1	1	—	—	0	2	4	2
California	—	10	31	177	216	—	2	7	37	52
Hawaii	—	0	1	3	3	—	0	1	2	—
Oregon	1	1	3	18	14	—	0	3	5	12
Washington	5	0	67	20	—	1	0	44	8	—
Territories										
American Samoa	N	0	0	N	N	—	0	0	—	—
C.N.M.I.	—	—	—	—	—	—	—	—	—	—
Guam	—	0	0	—	—	—	0	0	—	—
Puerto Rico	—	0	2	1	5	—	0	1	—	2
U.S. Virgin Islands	—	0	0	—	—	—	0	0	—	—

C.N.M.I.: Commonwealth of Northern Mariana Islands.

U: Unavailable. —: No reported cases. N: Not reportable. NN: Not Nationally Notifiable. NP: Nationally notifiable but not published. Cum: Cumulative year-to-date counts. Med: Median. Max: Maximum.

* Three low incidence conditions, rubella, rubella congenital, and tetanus, are in Table II to facilitate case count verification with reporting jurisdictions.

[†] Case counts for reporting years 2016 and 2017 are provisional and subject to change. For further information on interpretation of these data, see <http://www.cdc.gov/nndss/document/ProvisionalNationalNotifiableDiseasesSurveillanceData20100927.pdf>. Data for tuberculosis are displayed in Table III, which appears quarterly.

Morbidity and Mortality Weekly Report

TABLE II. (Continued) Provisional cases of selected notifiable diseases (≥1,000 cases reported during the preceding year), and selected* low frequency diseases, United States and U.S. territories, weeks ending July 8, 2017, and July 9, 2016 (27th week)[†] (Export data)

Reporting area	Meningococcal disease (<i>Neisseria meningitidis</i>) [§] (all serogroups)					Mumps					Pertussis				
	Current week	Previous 52 weeks		Cum 2017	Cum 2016	Current week	Previous 52 weeks		Cum 2017	Cum 2016	Current week	Previous 52 weeks		Cum 2017	Cum 2016
		Med	Max				Med	Max				Med	Max		
United States	—	6	21	183	215	16	158	519	3,823	1,840	140	298	1,220	7,331	8,304
New England	—	0	1	5	11	—	2	16	109	249	5	19	73	449	396
Connecticut	—	0	1	—	3	—	0	2	6	33	—	1	5	31	63
Maine	—	0	0	—	1	—	0	4	1	4	3	7	19	220	118
Massachusetts	—	0	1	4	7	—	2	14	92	204	—	4	12	77	86
New Hampshire	—	0	0	—	—	—	0	1	2	8	—	1	4	19	35
Rhode Island	—	0	0	—	—	—	0	6	7	—	—	0	19	25	32
Vermont	—	0	1	1	—	—	0	1	1	—	2	2	47	77	62
Mid. Atlantic	—	0	3	17	21	1	14	33	388	55	32	38	103	876	1,543
New Jersey	—	0	1	1	5	—	1	4	20	16	—	7	18	120	318
New York (Upstate)	—	0	2	7	4	1	5	23	119	13	21	10	33	265	347
New York City	—	0	3	4	7	—	5	19	145	23	—	3	14	52	171
Pennsylvania	—	0	1	5	5	—	1	15	104	3	11	20	86	439	707
E.N. Central	—	1	6	17	23	1	7	28	370	637	19	67	156	1,378	1,789
Illinois	—	0	2	4	9	—	3	22	231	281	—	16	41	252	481
Indiana	—	0	2	3	5	—	1	4	30	272	—	3	14	125	89
Michigan	—	0	1	2	2	—	0	2	16	10	—	9	21	244	145
Ohio	—	0	3	8	4	1	1	8	50	54	19	18	38	447	486
Wisconsin	—	0	1	—	3	—	0	15	43	20	—	19	73	310	588
W.N. Central	—	0	2	9	15	—	21	84	758	640	1	31	80	575	843
Iowa	—	0	1	—	2	—	5	15	88	561	—	2	19	42	70
Kansas	—	0	2	2	2	—	1	23	162	6	—	3	10	78	58
Minnesota	—	0	1	—	4	—	0	11	60	18	—	14	41	193	497
Missouri	—	0	1	5	4	—	11	72	434	4	—	7	33	189	89
Nebraska	—	0	1	2	2	—	0	3	3	40	1	2	5	42	102
North Dakota	—	0	0	—	—	—	0	2	11	9	—	1	5	27	17
South Dakota	—	0	0	—	1	—	0	0	—	2	—	0	1	4	10
S. Atlantic	—	1	5	41	35	—	3	10	94	51	12	24	46	600	710
Delaware	—	0	1	1	—	—	0	0	—	—	—	0	2	4	8
District of Columbia	—	0	0	—	—	—	0	2	3	—	—	0	3	9	6
Florida	—	0	3	13	8	—	0	5	17	10	12	7	19	208	179
Georgia	—	0	2	4	9	—	0	6	28	3	—	3	9	55	108
Maryland	—	0	2	3	1	—	0	3	3	1	—	2	10	59	59
North Carolina	—	0	1	4	3	—	0	3	16	27	—	4	9	94	180
South Carolina	—	0	2	7	4	—	0	1	—	3	—	2	12	84	60
Virginia	—	0	3	8	8	—	0	4	27	7	—	3	24	84	94
West Virginia	—	0	1	1	2	—	0	1	—	—	—	0	2	3	16
E.S. Central	—	0	1	6	10	—	1	13	87	96	5	13	32	433	490
Alabama	—	0	1	—	4	—	0	4	14	1	1	2	8	43	104
Kentucky	—	0	1	2	1	—	0	3	16	92	—	7	28	283	318
Mississippi	—	0	1	2	—	—	0	8	19	—	—	0	2	19	1
Tennessee	—	0	1	2	5	—	0	6	38	3	4	3	9	88	67
W.S. Central	—	0	2	13	22	12	40	334	1,016	28	37	30	222	962	642
Arkansas	—	0	1	—	1	—	19	272	534	—	3	2	12	103	22
Louisiana	—	0	1	3	2	—	0	3	11	—	—	1	6	44	34
Oklahoma	—	0	1	—	4	—	4	93	141	1	—	0	59	51	14
Texas	—	0	2	10	15	12	5	63	330	27	34	24	148	764	572
Mountain	—	0	2	12	12	—	2	13	131	40	8	31	71	988	895
Arizona	—	0	1	3	1	—	0	12	28	4	5	5	17	263	205
Colorado	—	0	2	2	3	—	0	10	55	10	—	12	28	325	375
Idaho	—	0	1	1	1	—	0	2	5	1	2	1	7	24	55
Montana	—	0	1	—	1	—	0	3	5	20	1	0	18	45	8
Nevada	—	0	2	2	3	—	0	1	5	2	—	1	6	44	21
New Mexico	—	0	1	2	1	—	0	1	1	2	—	3	11	89	81
Utah	—	0	1	2	2	—	0	9	32	1	—	6	23	190	136
Wyoming	—	0	0	—	—	—	0	0	—	—	—	0	5	8	14
Pacific	—	2	16	63	66	2	7	160	870	44	21	38	656	1,070	996
Alaska	—	0	1	1	4	—	0	2	1	—	—	2	10	22	63
California	—	1	6	40	51	—	2	11	73	41	2	28	51	682	764
Hawaii	—	0	0	—	1	—	0	17	121	—	—	0	3	13	43
Oregon	—	0	3	15	10	—	1	5	48	3	—	3	9	102	126
Washington	—	0	13	7	—	2	0	152	627	—	19	0	618	251	—
Territories															
American Samoa	—	0	0	—	—	—	0	0	—	—	—	0	0	—	—
C.N.M.I.	—	—	—	—	—	—	—	—	—	—	—	—	—	—	—
Guam	—	0	0	—	—	—	0	0	—	—	—	0	0	—	—
Puerto Rico	—	0	1	1	—	—	0	1	1	1	—	0	1	2	10
U.S. Virgin Islands	—	0	0	—	—	—	0	0	—	—	—	0	0	—	—

C.N.M.I.: Commonwealth of Northern Mariana Islands.

U: Unavailable. —: No reported cases. N: Not reportable. NN: Not Nationally Notifiable. NP: Nationally notifiable but not published. Cum: Cumulative year-to-date counts. Med: Median. Max: Maximum.

* Three low incidence conditions, rubella, rubella congenital, and tetanus, are in Table II to facilitate case count verification with reporting jurisdictions.

[†] Case counts for reporting years 2016 and 2017 are provisional and subject to change. For further information on interpretation of these data, see <http://www.cdc.gov/nndss/document/ProvisionalNationalNotifiableDiseasesSurveillanceData20100927.pdf>. Data for tuberculosis are displayed in Table III, which appears quarterly.

[§] Data for meningococcal disease, invasive caused by serogroups ACWY, serogroup B, other serogroups, and unknown serogroups are available in Table I.

Morbidity and Mortality Weekly Report

TABLE II. (Continued) Provisional cases of selected notifiable diseases (≥1,000 cases reported during the preceding year), and selected* low frequency diseases, United States and U.S. territories, weeks ending July 8, 2017, and July 9, 2016 (27th week)[†] (Export data)

Reporting area	Rabies, animal					Rubella					Rubella, congenital syndrome				
	Current week	Previous 52 weeks		Cum 2017	Cum 2016	Current week	Previous 52 weeks		Cum 2017	Cum 2016	Current week	Previous 52 weeks		Cum 2017	Cum 2016
		Med	Max				Med	Max				Med	Max		
United States	29	52	131	1,087	1,809	—	0	1	4	1	—	0	1	2	—
New England	5	3	13	81	146	—	0	0	—	—	—	0	1	1	—
Connecticut	1	1	6	20	60	—	0	0	—	—	—	0	0	—	—
Maine	—	1	5	22	36	—	0	0	—	—	—	0	0	—	—
Massachusetts	—	0	0	—	—	—	0	0	—	—	—	0	1	1	—
New Hampshire	2	0	2	10	15	—	0	0	—	—	—	0	0	—	—
Rhode Island	—	0	4	6	10	—	0	0	—	—	—	0	0	—	—
Vermont	2	1	4	23	25	—	0	0	—	—	—	0	0	—	—
Mid. Atlantic	11	12	36	222	476	—	0	1	2	—	—	0	0	—	—
New Jersey	—	0	0	—	—	—	0	0	—	—	—	0	0	—	—
New York (Upstate)	11	8	20	222	283	—	0	0	—	—	—	0	0	—	—
New York City	—	0	2	—	1	—	0	1	2	—	—	0	0	—	—
Pennsylvania	—	1	20	—	192	—	0	0	—	—	—	0	0	—	—
E.N. Central	1	1	11	31	52	—	0	0	—	—	—	0	1	—	—
Illinois	—	0	5	17	27	—	0	0	—	—	—	0	1	—	—
Indiana	—	0	0	—	—	—	0	0	—	—	—	0	0	—	—
Michigan	—	0	4	8	13	—	0	0	—	—	—	0	0	—	—
Ohio	1	0	8	6	12	—	0	0	—	—	—	0	0	—	—
Wisconsin	N	0	0	N	N	—	0	0	—	—	—	0	0	—	—
W.N. Central	1	2	7	53	71	—	0	0	—	—	—	0	0	—	—
Iowa	—	0	0	—	—	—	0	0	—	—	—	0	0	—	—
Kansas	1	0	4	25	40	—	0	0	—	—	—	0	0	—	—
Minnesota	—	0	0	—	—	—	0	0	—	—	—	0	0	—	—
Missouri	—	0	3	7	12	—	0	0	—	—	—	0	0	—	—
Nebraska	—	0	2	11	7	—	0	0	—	—	—	0	0	—	—
North Dakota	—	0	0	—	—	—	0	0	—	—	—	0	0	—	—
South Dakota	—	0	3	10	12	—	0	0	—	—	—	0	0	—	—
S. Atlantic	4	11	47	280	505	—	0	0	—	1	—	0	1	—	—
Delaware	—	0	0	—	—	—	0	0	—	—	—	0	0	—	—
District of Columbia	—	0	0	—	—	—	0	0	—	—	—	0	0	—	—
Florida	—	0	45	65	59	—	0	0	—	1	—	0	0	—	—
Georgia	—	0	9	—	136	—	0	0	—	—	—	0	0	—	—
Maryland	—	5	21	96	162	—	0	0	—	—	—	0	1	—	—
North Carolina	4	4	10	106	130	—	0	0	—	—	—	0	0	—	—
South Carolina	N	0	0	N	N	—	0	0	—	—	—	0	0	—	—
Virginia	—	0	0	—	—	—	0	0	—	—	—	0	0	—	—
West Virginia	—	0	2	13	18	—	0	0	—	—	—	0	0	—	—
E.S. Central	—	1	8	31	47	—	0	0	—	—	—	0	0	—	—
Alabama	—	1	7	24	39	—	0	0	—	—	—	0	0	—	—
Kentucky	—	0	6	6	7	—	0	0	—	—	—	0	0	—	—
Mississippi	—	0	1	1	1	—	0	0	—	—	—	0	0	—	—
Tennessee	—	0	0	—	—	—	0	0	—	—	—	0	0	—	—
W.S. Central	6	13	42	308	398	—	0	1	2	—	—	0	1	1	—
Arkansas	—	0	6	19	13	—	0	1	1	—	—	0	0	—	—
Louisiana	—	0	0	—	—	—	0	0	—	—	—	0	0	—	—
Oklahoma	—	0	23	15	19	—	0	0	—	—	—	0	0	—	—
Texas	6	12	42	274	366	—	0	1	1	—	—	0	1	1	—
Mountain	—	0	8	4	25	—	0	0	—	—	—	0	0	—	—
Arizona	N	0	0	N	N	—	0	0	—	—	—	0	0	—	—
Colorado	—	0	0	—	—	—	0	0	—	—	—	0	0	—	—
Idaho	—	0	4	—	2	—	0	0	—	—	—	0	0	—	—
Montana	—	0	0	—	—	—	0	0	—	—	—	0	0	—	—
Nevada	—	0	2	1	1	—	0	0	—	—	—	0	0	—	—
New Mexico	—	0	1	—	2	—	0	0	—	—	—	0	0	—	—
Utah	—	0	3	3	1	—	0	0	—	—	—	0	0	—	—
Wyoming	—	0	2	—	19	—	0	0	—	—	—	0	0	—	—
Pacific	1	5	23	77	89	—	0	0	—	—	—	0	0	—	—
Alaska	—	0	2	12	9	—	0	0	—	—	—	0	0	—	—
California	—	4	12	62	75	—	0	0	—	—	—	0	0	—	—
Hawaii	—	0	0	—	—	—	0	0	—	—	—	0	0	—	—
Oregon	1	0	1	3	5	—	0	0	—	—	—	0	0	—	—
Washington	—	0	20	—	—	—	0	0	—	—	—	0	0	—	—
Territories															
American Samoa	U	0	0	U	U	—	0	0	—	—	—	0	0	—	—
C.N.M.I.	—	—	—	—	—	—	—	—	—	—	—	—	—	—	—
Guam	—	0	0	—	—	—	0	0	—	—	—	0	0	—	—
Puerto Rico	—	0	0	—	—	—	0	0	—	—	—	0	0	—	—
U.S. Virgin Islands	—	0	0	—	—	—	0	0	—	—	—	0	0	—	—

C.N.M.I.: Commonwealth of Northern Mariana Islands.

U: Unavailable. —: No reported cases. N: Not reportable. NN: Not Nationally Notifiable. NP: Nationally notifiable but not published. Cum: Cumulative year-to-date counts. Med: Median. Max: Maximum.

* Three low incidence conditions, rubella, rubella congenital, and tetanus, are in Table II to facilitate case count verification with reporting jurisdictions.

[†] Case counts for reporting years 2016 and 2017 are provisional and subject to change. For further information on interpretation of these data, see <http://www.cdc.gov/nndss/document/ProvisionalNationalNotifiableDiseasesSurveillanceData20100927.pdf>. Data for tuberculosis are displayed in Table III, which appears quarterly.

Morbidity and Mortality Weekly Report

TABLE II. (Continued) Provisional cases of selected notifiable diseases (≥1,000 cases reported during the preceding year), and selected* low frequency diseases, United States and U.S. territories, weeks ending July 8, 2017, and July 9, 2016 (27th week)[†] (Export data)

Reporting area	Salmonellosis					Shiga toxin-producing <i>E. coli</i> (STEC) [§]					Shigellosis				
	Current week	Previous 52 weeks		Cum 2017	Cum 2016	Current week	Previous 52 weeks		Cum 2017	Cum 2016	Current week	Previous 52 weeks		Cum 2017	Cum 2016
		Med	Max				Med	Max				Med	Max		
United States	340	819	1,957	17,300	21,237	33	125	506	2,578	3,351	62	276	632	6,008	11,449
New England	7	36	79	818	995	1	5	16	119	175	1	6	13	144	121
Connecticut	2	8	22	190	221	—	1	7	20	82	—	1	4	31	24
Maine	4	2	7	36	55	1	0	3	8	13	1	0	1	4	—
Massachusetts	—	22	52	450	516	—	3	14	68	53	—	3	8	74	82
New Hampshire	—	3	10	53	89	—	0	3	12	15	—	0	3	7	4
Rhode Island	—	2	7	43	42	—	0	2	2	3	—	1	4	16	10
Vermont	1	2	8	46	72	—	0	3	9	9	—	0	2	12	1
Mid. Atlantic	85	76	205	1,615	1,990	6	14	31	296	324	7	24	43	518	791
New Jersey	—	11	55	86	388	—	2	7	42	71	—	5	12	91	126
New York (Upstate)	22	25	65	505	569	5	4	15	103	111	2	4	14	103	85
New York City	36	17	46	419	390	1	3	7	58	40	3	7	13	188	178
Pennsylvania	27	27	66	605	643	—	4	14	93	102	2	8	21	136	402
E.N. Central	35	92	208	2,059	2,850	2	12	45	239	525	3	43	82	940	2,015
Illinois	—	27	63	474	843	—	2	14	36	205	—	7	20	123	362
Indiana	—	12	32	227	359	—	1	8	22	52	—	3	9	35	186
Michigan	1	16	43	423	508	—	3	10	66	67	—	12	31	303	321
Ohio	34	26	68	658	703	2	4	14	94	86	3	16	30	304	603
Wisconsin	—	13	34	277	437	—	2	13	21	115	—	7	18	175	543
W.N. Central	37	61	143	1,255	1,847	7	20	62	396	640	6	15	50	289	1,633
Iowa	—	13	55	301	337	—	3	19	83	141	—	2	7	45	324
Kansas	1	9	25	200	194	—	2	18	38	61	—	3	17	64	149
Minnesota	—	3	27	—	480	—	1	22	—	187	—	1	10	—	506
Missouri	26	19	42	449	430	3	7	19	155	132	5	7	33	162	516
Nebraska	10	6	17	166	126	3	2	9	66	67	—	1	8	10	115
North Dakota	—	2	9	52	71	1	0	3	20	22	1	0	2	1	8
South Dakota	—	4	10	87	209	—	1	9	34	30	—	0	2	7	15
S. Atlantic	32	203	511	4,207	5,184	2	11	27	250	250	5	49	79	1,130	1,394
Delaware	1	2	17	43	42	—	0	2	4	5	—	1	6	24	23
District of Columbia	—	0	4	—	8	—	0	1	—	2	—	0	2	—	5
Florida	—	111	211	2,107	2,133	—	2	12	67	49	—	17	54	526	341
Georgia	15	33	90	696	807	1	2	9	65	45	2	9	20	207	400
Maryland	3	14	38	328	341	1	1	6	28	27	1	4	8	118	72
North Carolina	—	23	93	373	791	—	1	5	16	30	—	8	28	90	171
South Carolina	—	15	78	214	508	—	0	4	8	21	—	3	18	94	147
Virginia	13	22	46	410	449	—	2	9	61	58	2	3	13	69	233
West Virginia	—	3	12	36	105	—	0	3	1	13	—	0	2	2	2
E.S. Central	9	71	210	1,334	1,631	1	5	13	106	136	4	18	39	462	381
Alabama	—	23	48	357	509	—	0	4	15	13	2	3	8	105	167
Kentucky	3	11	35	254	334	—	1	5	17	39	—	7	20	150	93
Mississippi	4	20	54	374	382	—	0	2	10	11	1	2	8	81	30
Tennessee	2	17	111	349	406	1	3	7	64	73	1	5	13	126	91
W.S. Central	88	135	646	2,307	2,993	—	24	166	410	451	22	65	202	994	3,178
Arkansas	18	13	46	232	241	—	1	6	30	52	2	3	15	133	87
Louisiana	—	15	53	172	528	—	0	2	3	10	—	5	22	59	192
Oklahoma	13	17	52	296	291	—	2	39	33	52	2	3	44	75	392
Texas	57	93	589	1,607	1,933	—	18	122	344	337	18	46	151	727	2,507
Mountain	16	55	94	1,257	1,256	6	14	34	269	386	6	22	55	470	1,044
Arizona	9	17	34	363	350	6	3	8	79	68	4	12	30	229	802
Colorado	—	13	33	284	291	—	2	11	29	111	—	4	16	88	61
Idaho	1	4	10	98	86	—	3	12	75	77	2	0	3	13	35
Montana	2	3	22	70	80	—	2	19	44	48	—	0	3	5	4
Nevada	—	3	9	79	95	—	0	4	8	30	—	1	10	22	21
New Mexico	2	6	17	125	134	—	0	5	13	21	—	4	22	92	78
Utah	2	6	25	200	182	—	1	5	18	27	—	0	4	16	40
Wyoming	—	1	6	38	38	—	0	2	3	4	—	0	3	5	3
Pacific	31	106	824	2,448	2,491	8	23	274	493	464	8	45	232	1,061	892
Alaska	—	1	5	20	35	—	0	3	3	7	—	0	2	6	3
California	8	80	147	1,811	2,113	1	15	39	292	379	2	42	71	880	786
Hawaii	—	5	16	103	130	—	0	3	14	8	—	0	3	22	25
Oregon	8	8	19	204	213	1	4	12	89	70	2	1	5	53	78
Washington	15	0	754	310	—	6	0	259	95	—	4	0	191	100	—
Territories															
American Samoa	—	0	0	—	—	—	0	0	—	—	—	0	0	—	—
C.N.M.I.	—	—	—	—	—	—	—	—	—	—	—	—	—	—	—
Guam	—	0	5	—	7	—	0	0	—	—	—	0	5	—	3
Puerto Rico	—	10	25	131	281	—	0	0	—	—	—	0	2	5	17
U.S. Virgin Islands	—	0	0	—	—	—	0	0	—	—	—	0	0	—	—

C.N.M.I.: Commonwealth of Northern Mariana Islands.

U: Unavailable. —: No reported cases. N: Not reportable. NN: Not Nationally Notifiable. NP: Nationally notifiable but not published. Cum: Cumulative year-to-date counts. Med: Median. Max: Maximum.

* Three low incidence conditions, rubella, rubella congenital, and tetanus, are in Table II to facilitate case count verification with reporting jurisdictions.

[†] Case counts for reporting years 2016 and 2017 are provisional and subject to change. For further information on interpretation of these data, see <http://www.cdc.gov/nndss/document/ProvisionalNationalNotifiableDiseasesSurveillanceData20100927.pdf>. Data for tuberculosis are displayed in Table III, which appears quarterly.

[§] Includes *E. coli* O157:H7, Shiga toxin-positive, serogroup non-O157, and Shiga toxin-positive, not serogrouped.

Morbidity and Mortality Weekly Report

TABLE II. (Continued) Provisional cases of selected notifiable diseases (≥1,000 cases reported during the preceding year), and selected* low frequency diseases, United States and U.S. territories, weeks ending July 8, 2017, and July 9, 2016 (27th week)[†] (Export data)

Reporting area	Spotted Fever Rickettsiosis [§]										Syphilis, primary and secondary				
	Confirmed					Probable									
	Current week	Previous 52 weeks		Cum 2017	Cum 2016	Current week	Previous 52 weeks		Cum 2017	Cum 2016	Current week	Previous 52 weeks		Cum 2017	Cum 2016
	Med	Max				Med	Max				Med	Max			
United States	4	3	11	73	60	71	74	224	1,806	1,640	71	514	668	11,913	14,161
New England	—	0	0	—	—	—	0	3	10	13	1	15	30	356	409
Connecticut	—	0	0	—	—	—	0	1	1	5	—	1	7	33	60
Maine	—	0	0	—	—	—	0	1	3	1	—	1	4	25	21
Massachusetts	—	0	0	—	—	—	0	1	5	5	1	10	22	258	243
New Hampshire	—	0	0	—	—	—	0	1	1	1	—	1	4	30	24
Rhode Island	—	0	0	—	—	—	0	2	—	1	—	0	18	2	51
Vermont	—	0	0	—	—	—	0	2	—	—	—	0	3	8	10
Mid. Atlantic	—	0	2	6	2	2	2	11	45	43	16	66	90	1,568	1,827
New Jersey	—	0	1	1	1	—	1	7	19	28	—	7	19	119	238
New York (Upstate)	—	0	2	4	—	—	0	11	8	2	11	10	31	269	235
New York City	—	0	1	1	1	1	0	2	4	3	2	34	49	781	967
Pennsylvania	—	0	0	—	—	1	0	3	14	10	3	15	35	399	387
E.N. Central	1	0	2	2	1	—	2	16	67	65	—	43	68	897	1,482
Illinois	—	0	1	1	—	—	1	8	38	27	—	14	36	209	642
Indiana	—	0	0	—	—	—	0	7	17	17	—	5	10	138	190
Michigan	—	0	1	—	1	—	0	1	1	5	—	5	16	77	187
Ohio	1	0	1	1	—	—	0	4	8	8	—	14	21	381	392
Wisconsin	—	0	0	—	—	—	0	2	3	8	—	3	18	92	71
W.N. Central	2	0	2	12	3	9	8	41	303	240	1	20	31	488	542
Iowa	—	0	0	—	—	—	0	2	2	4	—	2	5	42	38
Kansas	—	0	1	1	2	—	2	11	72	58	—	2	7	66	63
Minnesota	—	0	0	—	—	—	0	1	—	3	—	5	11	145	170
Missouri	2	0	1	7	1	9	6	33	217	161	—	7	14	205	222
Nebraska	—	0	1	2	—	—	0	4	5	13	1	1	4	14	25
North Dakota	—	0	1	1	—	—	0	2	5	—	—	0	3	10	17
South Dakota	—	0	1	1	—	—	0	2	2	1	—	0	3	6	7
S. Atlantic	—	1	8	33	43	4	12	42	296	405	7	113	161	2,580	3,384
Delaware	—	0	1	2	—	—	0	4	14	9	1	0	6	16	34
District of Columbia	—	0	1	—	—	—	0	1	1	1	—	3	10	61	81
Florida	—	0	2	3	3	—	0	5	15	4	1	46	63	1,152	1,236
Georgia	—	1	6	18	37	—	0	0	—	—	—	21	41	529	754
Maryland	—	0	2	8	—	—	0	3	16	—	—	8	18	185	276
North Carolina	—	0	2	—	1	—	6	24	150	238	—	18	33	438	583
South Carolina	—	0	1	1	1	—	1	5	10	12	5	5	16	179	174
Virginia	—	0	1	1	1	4	4	18	88	136	—	0	41	—	215
West Virginia	—	0	0	—	—	—	0	2	2	5	—	1	4	20	31
E.S. Central	—	0	4	6	2	19	22	70	590	562	7	26	36	575	626
Alabama	—	0	1	3	—	1	7	27	204	202	—	7	14	190	174
Kentucky	—	0	2	—	1	7	3	13	110	57	6	4	13	101	90
Mississippi	—	0	1	—	—	—	2	9	44	49	—	5	13	122	158
Tennessee	—	0	1	3	1	11	8	41	232	254	1	7	13	162	204
W.S. Central	1	0	6	3	3	36	18	142	480	290	16	60	78	1,516	1,545
Arkansas	1	0	1	3	3	22	15	75	406	268	—	3	11	76	74
Louisiana	—	0	0	—	—	—	0	2	1	2	—	13	30	287	353
Oklahoma	—	0	6	—	—	13	0	114	50	3	—	3	10	38	139
Texas	—	0	1	—	—	1	1	12	23	17	16	40	59	1,115	979
Mountain	—	0	3	9	6	1	0	3	7	15	1	33	57	789	843
Arizona	—	0	3	8	3	—	0	1	4	5	—	13	24	298	334
Colorado	—	0	0	—	—	1	0	1	2	—	1	4	14	98	121
Idaho	—	0	1	—	2	—	0	1	—	2	—	1	3	25	31
Montana	—	0	1	1	1	—	0	2	—	2	—	0	3	10	7
Nevada	—	0	0	—	—	—	0	1	—	2	—	8	25	242	198
New Mexico	—	0	0	—	—	—	0	1	1	—	—	3	11	79	97
Utah	—	0	0	—	—	—	0	1	—	3	—	1	6	36	53
Wyoming	—	0	0	—	—	—	0	0	—	1	—	0	1	1	2
Pacific	—	0	1	2	—	—	0	3	8	7	22	130	177	3,144	3,503
Alaska	N	0	0	N	N	N	0	0	N	N	—	0	1	4	4
California	—	0	1	1	—	—	0	3	5	4	14	115	161	2,780	2,977
Hawaii	N	0	0	N	N	N	0	0	N	N	—	2	6	42	60
Oregon	—	0	1	1	—	—	0	1	3	3	5	6	12	152	185
Washington	—	0	0	—	—	—	0	0	—	—	3	8	23	166	277
Territories															
American Samoa	N	0	0	N	N	N	0	0	N	N	—	0	0	—	—
C.N.M.I.	—	—	—	—	—	—	—	—	—	—	—	—	—	—	—
Guam	N	0	0	N	N	N	0	0	N	N	—	0	0	—	—
Puerto Rico	N	0	0	N	N	N	0	0	N	N	—	8	19	194	274
U.S. Virgin Islands	—	0	0	—	—	—	0	0	—	—	—	0	0	—	—

C.N.M.I.: Commonwealth of Northern Mariana Islands.

U: Unavailable. —: No reported cases. N: Not reportable. NN: Not Nationally Notifiable. NP: Nationally notifiable but not published. Cum: Cumulative year-to-date counts. Med: Median. Max: Maximum.

* Three low incidence conditions, rubella, rubella congenital, and tetanus, are in Table II to facilitate case count verification with reporting jurisdictions.

[†] Case counts for reporting years 2016 and 2017 are provisional and subject to change. For further information on interpretation of these data, see <http://www.cdc.gov/nndss/document/ProvisionalNationalNotifiableDiseasesSurveillanceData20100927.pdf>. Data for tuberculosis are displayed in Table III, which appears quarterly.

[§] Illnesses with similar clinical presentation that result from Spotted Fever Group Rickettsia infections are reported as Spotted Fever Rickettsioses. Rocky Mountain Spotted Fever (RMSF), caused by *Rickettsia rickettsii*, is the most common and well-known Spotted Fever.

Morbidity and Mortality Weekly Report

TABLE II. (Continued) Provisional cases of selected notifiable diseases (≥1,000 cases reported during the preceding year), and selected* low frequency diseases, United States and U.S. territories, weeks ending July 8, 2017, and July 9, 2016 (27th week)† (Export data)

Reporting area	Tetanus					Varicella (chickenpox)				
	Current week	Previous 52 weeks		Cum 2017	Cum 2016	Current week	Previous 52 weeks		Cum 2017	Cum 2016
		Med	Max				Med	Max		
United States	2	1	3	20	16	35	154	243	3,780	4,989
New England	—	0	1	1	—	4	14	24	370	493
Connecticut	—	0	0	—	—	—	1	5	50	75
Maine	—	0	1	1	—	4	4	10	100	123
Massachusetts	—	0	0	—	—	—	4	16	172	191
New Hampshire	—	0	0	—	—	—	0	5	—	46
Rhode Island	—	0	0	—	—	—	0	6	25	26
Vermont	—	0	0	—	—	—	1	4	23	32
Mid. Atlantic	1	0	2	3	2	4	18	36	472	613
New Jersey	—	0	0	—	—	—	8	23	202	229
New York (Upstate)	1	0	1	2	—	N	0	0	N	N
New York City	—	0	1	—	—	—	0	0	—	—
Pennsylvania	—	0	1	1	2	4	11	21	270	384
E.N. Central	—	0	1	1	2	7	34	56	907	1,173
Illinois	—	0	0	—	1	—	7	17	165	262
Indiana	—	0	1	—	—	—	3	10	90	105
Michigan	—	0	1	1	—	1	9	21	282	343
Ohio	—	0	1	—	1	6	8	23	241	251
Wisconsin	—	0	0	—	—	—	5	21	129	212
W.N. Central	—	0	1	2	—	1	14	29	328	439
Iowa	—	0	1	—	—	N	0	0	N	N
Kansas	—	0	1	1	—	—	0	11	—	108
Minnesota	—	0	0	—	—	—	7	23	212	183
Missouri	—	0	0	—	—	—	3	8	71	77
Nebraska	—	0	1	1	—	1	0	2	16	18
North Dakota	—	0	0	—	—	—	0	3	17	29
South Dakota	—	0	0	—	—	—	0	2	12	24
S. Atlantic	—	0	1	4	5	7	22	46	551	779
Delaware	—	0	0	—	—	—	0	3	10	4
District of Columbia	—	0	0	—	—	—	0	2	1	9
Florida	—	0	1	1	3	7	12	28	345	456
Georgia	—	0	0	—	—	—	4	18	116	87
Maryland	—	0	1	1	—	N	0	0	N	N
North Carolina	—	0	1	2	—	N	0	0	N	N
South Carolina	—	0	0	—	—	—	2	15	61	73
Virginia	—	0	0	—	1	—	2	15	18	145
West Virginia	—	0	0	—	1	—	0	2	—	5
E.S. Central	—	0	1	1	2	—	1	5	31	57
Alabama	—	0	1	1	—	—	1	5	29	55
Kentucky	—	0	1	—	—	N	0	0	N	N
Mississippi	—	0	0	—	1	—	0	2	2	2
Tennessee	—	0	0	—	1	N	0	0	N	N
W.S. Central	—	0	1	1	3	6	25	96	686	818
Arkansas	—	0	1	1	—	1	2	10	50	71
Louisiana	—	0	0	—	—	—	0	8	1	39
Oklahoma	—	0	0	—	1	N	0	0	N	N
Texas	—	0	0	—	2	5	23	91	635	708
Mountain	—	0	1	4	1	6	16	39	375	565
Arizona	—	0	0	—	1	—	4	13	96	159
Colorado	—	0	0	—	—	4	4	32	96	163
Idaho	—	0	1	1	—	N	0	0	N	N
Montana	—	0	1	1	—	1	0	8	21	48
Nevada	—	0	1	1	—	N	0	0	N	N
New Mexico	—	0	0	—	—	1	1	6	45	36
Utah	—	0	1	1	—	—	3	10	112	155
Wyoming	—	0	0	—	—	—	0	2	5	4
Pacific	1	0	1	3	1	—	2	6	60	52
Alaska	—	0	0	—	1	—	1	3	23	8
California	—	0	1	2	—	—	0	3	14	24
Hawaii	—	0	0	—	—	—	1	5	23	20
Oregon	1	0	0	1	—	N	0	0	N	N
Washington	—	0	0	—	—	N	0	0	N	N
Territories										
American Samoa	—	0	0	—	—	N	0	0	N	N
C.N.M.I.	—	—	—	—	—	—	—	—	—	—
Guam	—	0	0	—	—	—	0	5	—	7
Puerto Rico	—	0	0	—	—	—	1	5	20	43
U.S. Virgin Islands	—	0	0	—	—	—	0	0	—	—

C.N.M.I.: Commonwealth of Northern Mariana Islands.

U: Unavailable. —: No reported cases. N: Not reportable. NN: Not Nationally Notifiable. NP: Nationally notifiable but not published. Cum: Cumulative year-to-date counts. Med: Median. Max: Maximum.

* Three low incidence conditions, rubella, rubella congenital, and tetanus, are in Table II to facilitate case count verification with reporting jurisdictions.

† Case counts for reporting years 2016 and 2017 are provisional and subject to change. For further information on interpretation of these data, see <http://www.cdc.gov/nndss/document/ProvisionalNationalNotifiableDiseasesSurveillanceData20100927.pdf>. Data for tuberculosis are displayed in Table III, which appears quarterly.

Morbidity and Mortality Weekly Report

TABLE II. (Continued) Provisional cases of selected notifiable diseases (≥1,000 cases reported during the preceding year), and selected* low frequency diseases, United States and U.S. territories, weeks ending July 8, 2017, and July 9, 2016 (27th week)[†] (Export data)

Reporting area	Vibriosis (Any species of the family <i>Vibrionaceae</i> , other than toxigenic <i>Vibrio cholerae</i> O1 or O139) [§]									
	Confirmed					Probable				
	Current week	Previous 52 weeks		Cum 2017	Cum 2016	Current week	Previous 52 weeks		Cum 2017	Cum 2016
	Med	Max				Med	Max			
United States	10	17	84	362	395	2	2	12	144	12
New England	—	1	13	25	20	—	0	2	5	—
Connecticut	—	0	3	8	3	—	0	2	5	—
Maine	—	0	2	2	1	—	0	0	—	—
Massachusetts	—	1	7	12	13	—	0	1	—	—
New Hampshire	—	0	1	1	1	—	0	1	—	—
Rhode Island	—	0	3	2	2	—	0	0	—	—
Vermont	—	0	0	—	—	—	0	0	—	—
Mid. Atlantic	3	2	10	29	25	—	0	2	9	5
New Jersey	—	0	4	6	6	—	0	1	5	—
New York (Upstate)	2	0	5	12	9	—	0	0	—	4
New York City	1	0	2	4	3	—	0	2	3	—
Pennsylvania	—	0	4	7	7	—	0	1	1	1
E.N. Central	2	1	5	19	28	—	0	3	21	—
Illinois	—	0	3	4	10	—	0	1	5	—
Indiana	—	0	2	1	5	—	0	0	—	—
Michigan	—	0	2	4	5	—	0	1	3	—
Ohio	2	0	2	6	2	—	0	3	7	—
Wisconsin	—	0	1	4	6	—	0	1	6	—
W.N. Central	—	0	4	3	16	—	0	3	13	4
Iowa	—	0	0	—	—	—	0	0	—	—
Kansas	—	0	1	—	2	—	0	1	1	—
Minnesota	—	0	3	—	8	—	0	3	—	3
Missouri	—	0	1	3	3	—	0	2	8	—
Nebraska	—	0	0	—	—	—	0	1	1	1
North Dakota	—	0	1	—	—	—	0	0	—	—
South Dakota	—	0	1	—	3	—	0	1	3	—
S. Atlantic	—	6	21	134	139	—	0	7	33	1
Delaware	—	0	3	—	3	—	0	0	—	—
District of Columbia	—	0	0	—	—	—	0	0	—	—
Florida	—	3	10	87	77	—	0	5	19	—
Georgia	—	0	2	10	11	—	0	0	—	—
Maryland	—	1	7	13	15	—	0	1	2	1
North Carolina	—	0	3	10	9	—	0	2	9	—
South Carolina	—	0	3	2	8	—	0	0	—	—
Virginia	—	0	5	12	16	—	0	1	3	—
West Virginia	—	0	1	—	—	—	0	0	—	—
E.S. Central	1	1	5	20	27	—	0	2	7	1
Alabama	1	0	4	8	13	—	0	1	2	—
Kentucky	—	0	1	1	4	—	0	1	2	—
Mississippi	—	0	2	9	3	—	0	0	—	—
Tennessee	—	0	1	2	7	—	0	1	3	1
W.S. Central	—	2	14	44	51	1	0	3	26	—
Arkansas	—	0	1	1	1	—	0	0	—	—
Louisiana	—	0	4	8	21	—	0	2	3	—
Oklahoma	—	0	1	1	—	1	0	1	2	—
Texas	—	2	10	34	29	—	0	3	21	—
Mountain	—	1	5	15	20	1	0	3	19	—
Arizona	—	0	3	2	5	1	0	1	7	—
Colorado	—	0	2	7	6	—	0	1	6	—
Idaho	—	0	0	—	—	—	0	0	—	—
Montana	—	0	1	3	2	—	0	1	1	—
Nevada	—	0	1	—	1	—	0	1	—	—
New Mexico	—	0	0	—	—	—	0	0	—	—
Utah	—	0	1	2	6	—	0	1	5	—
Wyoming	—	0	1	1	—	—	0	0	—	—
Pacific	4	3	63	73	69	—	0	4	11	1
Alaska	—	0	2	—	1	—	0	1	1	—
California	—	2	11	35	50	—	0	0	—	—
Hawaii	—	0	3	23	10	—	0	0	—	1
Oregon	1	0	3	7	8	—	0	1	6	—
Washington	3	0	62	8	—	—	0	3	4	—
Territories										
American Samoa	—	0	0	—	—	—	0	0	—	—
C.N.M.I.	—	—	—	—	—	—	—	—	—	—
Guam	—	0	0	—	—	—	0	0	—	—
Puerto Rico	—	0	0	—	—	—	0	0	—	—
U.S. Virgin Islands	—	0	0	—	—	—	0	0	—	—

C.N.M.I.: Commonwealth of Northern Mariana Islands.

U: Unavailable. —: No reported cases. N: Not reportable. NN: Not Nationally Notifiable. NP: Nationally notifiable but not published. Cum: Cumulative year-to-date counts. Med: Median.

Max: Maximum.

* Three low incidence conditions, rubella, rubella congenital, and tetanus, are in Table II to facilitate case count verification with reporting jurisdictions.

[†] Case counts for reporting years 2016 and 2017 are provisional and subject to change. For further information on interpretation of these data, see <http://www.cdc.gov/nndss/document/ProvisionalNationalNotifiableDiseasesSurveillanceData20100927.pdf>. Data for tuberculosis are displayed in Table III, which appears quarterly.

[§] The national surveillance case definition was revised in 2017 to include infections confirmed by culture-independent diagnostic tests as probable cases.

Morbidity and Mortality Weekly Report

TABLE II. (Continued) Provisional cases of selected notifiable diseases (≥1,000 cases reported during the preceding year), and selected* low frequency diseases, United States and U.S. territories, weeks ending July 8, 2017, and July 9, 2016 (27th week)[†] (Export data)

Reporting area	West Nile virus disease [§]									
	Neuroinvasive					Nonneuroinvasive [¶]				
	Current week	Previous 52 weeks		Cum 2017	Cum 2016	Current week	Previous 52 weeks		Cum 2017	Cum 2016
	Med	Max				Med	Max			
United States	—	4	120	15	61	1	3	97	22	52
New England	—	0	3	—	1	—	0	2	—	—
Connecticut	—	0	1	—	—	—	0	0	—	—
Maine	—	0	0	—	—	—	0	0	—	—
Massachusetts	—	0	2	—	—	—	0	2	—	—
New Hampshire	—	0	0	—	—	—	0	0	—	—
Rhode Island	—	0	1	—	—	—	0	0	—	—
Vermont	—	0	1	—	1	—	0	0	—	—
Mid. Atlantic	—	0	6	—	1	—	0	4	—	1
New Jersey	—	0	1	—	1	—	0	0	—	—
New York (Upstate)	—	0	0	—	—	—	0	4	—	—
New York City	—	0	3	—	—	—	0	0	—	—
Pennsylvania	—	0	2	—	—	—	0	1	—	1
E.N. Central	—	0	30	2	4	—	0	14	—	3
Illinois	—	0	15	—	1	—	0	14	—	3
Indiana	—	0	4	2	1	—	0	1	—	—
Michigan	—	0	10	—	1	—	0	1	—	—
Ohio	—	0	3	—	—	—	0	2	—	—
Wisconsin	—	0	2	—	1	—	0	2	—	—
W.N. Central	—	0	19	1	3	—	0	48	6	24
Iowa	—	0	3	—	—	—	0	5	—	—
Kansas	—	0	3	1	2	—	0	2	2	1
Minnesota	—	0	3	—	—	—	0	19	—	2
Missouri	—	0	3	—	—	—	0	2	2	—
Nebraska	—	0	7	—	—	—	0	7	—	4
North Dakota	—	0	6	—	—	—	0	11	—	2
South Dakota	—	0	8	—	1	—	0	16	2	15
S. Atlantic	—	0	6	—	2	—	0	3	1	1
Delaware	—	0	0	—	—	—	0	0	—	—
District of Columbia	—	0	1	—	—	—	0	0	—	—
Florida	—	0	3	—	—	—	0	2	—	—
Georgia	—	0	2	—	—	—	0	1	1	1
Maryland	—	0	1	—	1	—	0	0	—	—
North Carolina	—	0	1	—	—	—	0	0	—	—
South Carolina	—	0	2	—	1	—	0	2	—	—
Virginia	—	0	2	—	—	—	0	1	—	—
West Virginia	—	0	0	—	—	—	0	1	—	—
E.S. Central	—	0	4	2	4	—	0	5	3	2
Alabama	—	0	1	—	1	—	0	2	1	—
Kentucky	—	0	1	—	—	—	0	1	—	—
Mississippi	—	0	4	1	3	—	0	2	1	1
Tennessee	—	0	1	1	—	—	0	1	1	1
W.S. Central	—	2	23	3	4	1	1	12	6	4
Arkansas	—	0	2	—	—	—	0	1	—	1
Louisiana	—	0	6	—	1	—	0	3	—	—
Oklahoma	—	0	3	—	1	—	0	3	1	1
Texas	—	1	19	3	2	1	1	10	5	2
Mountain	—	1	18	7	22	—	0	21	3	12
Arizona	—	0	6	4	17	—	0	3	2	9
Colorado	—	0	9	1	2	—	0	16	—	3
Idaho	—	0	1	—	—	—	0	2	—	—
Montana	—	0	1	—	—	—	0	1	—	—
Nevada	—	0	2	1	3	—	0	1	—	—
New Mexico	—	0	2	1	—	—	0	0	—	—
Utah	—	0	3	—	—	—	0	2	1	—
Wyoming	—	0	2	—	—	—	0	2	—	—
Pacific	—	0	43	—	20	—	0	23	3	5
Alaska	—	0	0	—	—	—	0	0	—	—
California	—	0	42	—	20	—	0	22	3	5
Hawaii	—	0	0	—	—	—	0	0	—	—
Oregon	—	0	1	—	—	—	0	1	—	—
Washington	—	0	3	—	—	—	0	1	—	—
Territories										
American Samoa	—	0	0	—	—	—	0	0	—	—
C.N.M.I.	—	—	—	—	—	—	—	—	—	—
Guam	—	0	0	—	—	—	0	0	—	—
Puerto Rico	—	0	0	—	—	—	0	0	—	—
U.S. Virgin Islands	—	0	0	—	—	—	0	0	—	—

C.N.M.I.: Commonwealth of Northern Mariana Islands.

U: Unavailable. —: No reported cases. N: Not reportable. NN: Not Nationally Notifiable. NP: Nationally notifiable but not published. Cum: Cumulative year-to-date counts. Med: Median.

Max: Maximum.

* Three low incidence conditions, rubella, rubella congenital, and tetanus, are in Table II to facilitate case count verification with reporting jurisdictions.

[†] Case counts for reporting years 2016 and 2017 are provisional and subject to change. For further information on interpretation of these data, see <http://www.cdc.gov/nndss/document/ProvisionalNationalNotifiableDiseasesSurveillanceData20100927.pdf>. Data for tuberculosis are displayed in Table III, which appears quarterly.

[§] Updated weekly from the Division of Vector-Borne Diseases, National Center for Emerging and Zoonotic Infectious Diseases (ArboNET Surveillance). Data for Jamestown Canyon virus, La Crosse virus, Chikungunya virus, Eastern equine encephalitis virus, Powassan virus, St. Louis virus, and Western equine encephalitis virus diseases are available in Table I.

[¶] Not reportable in all states. Reporting exceptions are available at <http://www.cdc.gov/nndss/downloads.html>.

Morbidity and Mortality Weekly Report

Table III. Provisional cases of selected notifiable disease, United States and U.S. territories, 2nd quarter ending July 1, 2017 (26th week) (Export Data)

Reporting area	Tuberculosis*				
	Current quarter	Previous 4 quarters		Cum 2017	Cum 2016
		Min	Max		
United States	1,545	1,545	2,795	3,327	4,193
New England	40	40	87	100	134
Connecticut	5	5	16	14	28
Maine	2	2	8	7	10
Massachusetts	27	27	56	65	80
New Hampshire	4	4	5	8	6
Rhode Island	2	1	3	5	8
Vermont	—	0	2	1	2
Mid. Atlantic	296	260	364	556	559
New Jersey	56	34	122	90	100
New York (Upstate)	46	35	69	81	90
New York City	155	137	155	295	284
Pennsylvania	39	36	51	90	85
E.N. Central	140	140	229	293	344
Illinois	68	68	85	146	163
Indiana	21	21	34	44	49
Michigan	13	13	42	31	63
Ohio	35	26	58	61	55
Wisconsin	3	3	16	11	14
W.N. Central	48	48	109	99	200
Iowa	—	0	11	1	27
Kansas	—	0	9	—	21
Minnesota	39	19	59	58	69
Missouri	4	4	33	20	45
Nebraska	3	3	6	8	19
North Dakota	—	0	6	4	12
South Dakota	2	2	6	8	7
S. Atlantic	276	276	503	572	789
Delaware	4	3	4	8	10
District of Columbia	7	4	7	14	17
Florida	72	72	164	199	314
Georgia	46	46	83	114	152
Maryland	56	24	80	80	91
North Carolina	31	29	80	60	79
South Carolina	13	10	31	23	45
Virginia	44	23	79	67	76
West Virginia	3	3	5	7	5
E.S. Central	76	76	122	175	158
Alabama	22	22	37	59	54
Kentucky	13	13	33	32	33
Mississippi	13	9	22	22	24
Tennessee	28	20	36	62	47
W.S. Central	222	222	384	502	782
Arkansas	21	14	27	35	43
Louisiana	6	6	35	36	62
Oklahoma	11	10	18	21	42
Texas	184	184	311	410	635
Mountain	59	49	258	160	83
Arizona	12	0	188	60	—
Colorado	17	11	18	30	35
Idaho	—	0	11	2	5
Montana	2	1	2	3	1
Nevada	16	15	19	32	21
New Mexico	6	6	14	14	12
Utah	6	6	13	19	8
Wyoming	—	0	0	—	1
Pacific	388	388	739	870	1,144
Alaska	14	9	14	23	33
California	335	335	617	734	924
Hawaii	20	20	34	53	52
Oregon	19	16	20	35	34
Washington	—	0	54	25	101
Territories					
American Samoa	—	0	1	—	—
C.N.M.I.	8	4	9	17	16
Guam	5	5	25	18	34
Puerto Rico	8	8	32	16	23
U.S. Virgin Islands	—	0	0	—	—

C.N.M.I.: Commonwealth of Northern Mariana Islands.

U: Unavailable. —: No reported cases. N: Not reportable. NN: Not Nationally Notifiable. Cum: Cumulative year-to-date counts. Min: Minimum. Max: Maximum.

* Case counts for reporting years 2016 and 2017 are provisional and subject to change. For further information on interpretation of these data, see <http://www.cdc.gov/nndss/document/ProvisionalNationalNotifiableDiseasesSurveillanceData20100927.pdf>. Data for tuberculosis are displayed quarterly.