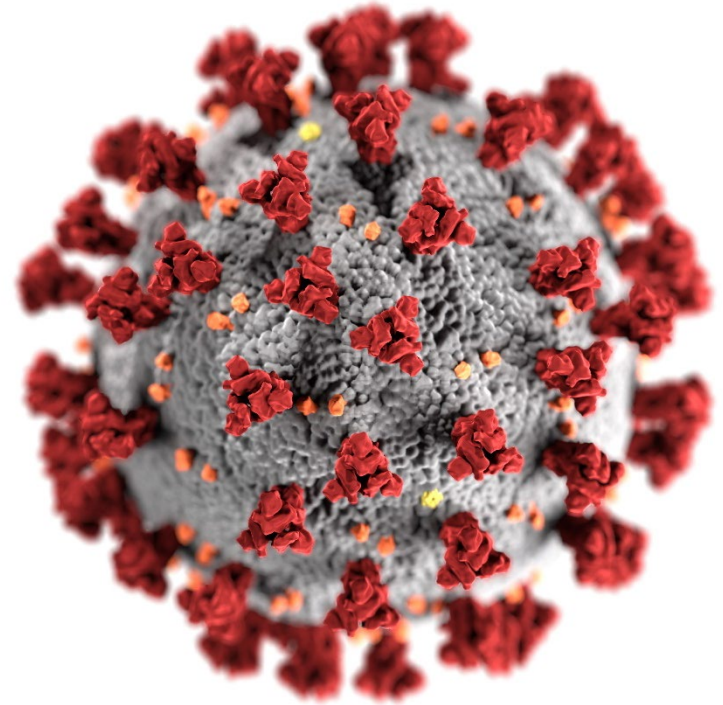


Reporting COVID-19 Vaccination Data: Refresher Training and Updates

Division of Healthcare Quality Promotion
Immunization Services Division
Centers for Disease Control and Prevention (CDC) COVID-19
Vaccine Task Force

February 2022



cdc.gov/coronavirus

CMS Reporting Requirements for Multiple HCP COVID-19 Vaccination Data Quality Reporting Programs

- Facilities can contact CMS with questions about reporting requirements:
 - Inpatient quality reporting program (hospitals): iqr@hsag.com
 - PPS-exempt cancer hospital quality reporting program: QRFormsSubmission@hsag.com
 - Inpatient psychiatric facility quality reporting program: IPFQualityReporting@hsag.com
 - Inpatient rehabilitation facility quality reporting program: IRF.questions@cms.hhs.gov
 - Long-term acute care quality reporting program: LTCHQualityQuestions@cms.hhs.gov
 - Long-term care facilities: DNH_TriageTeam@cms.hhs.gov
 - Ambulatory Surgery Centers: oqrsupport@hsag.com
 - Dialysis: ESRD QIP: qnetsupport-esrd@hcqis.org



Upcoming CMS Deadlines

Quality Reporting Programs	Encounter Quarter	Reporting Period	Submission Deadline
All programs excluding ASCs	Q4 2021	Oct 1–Dec 31, 2021	May 15, 2022
All	Q1 2022	Jan 1–Mar 31, 2022	August 15, 2022
All	Q2 2022	Apr 1–Jun 30, 2022	November 15, 2022
All	Q3 2022	Jul 1–Sep 30, 2022	February 15, 2023
All	Q4 2022	Oct 1–Dec 31, 2022	May 15, 2023



Objectives

- Review of recent changes and updates:
 - Inclusion of vendors as "other contract personnel"
 - Medical contraindication after 1 vaccine dose
 - Removal of Question 4 (eligible for additional/booster dose)
- Overview of reporting cumulative vaccination data.

Note: These slides will be posted to the NHSN COVID-19 Vaccination websites within the next 1-2 weeks.



Review of Recent Changes and Updates



Guidance Surrounding Vendors

- Previously, a NHSN FAQ instructed users not to include vendors as healthcare personnel.
- After receiving stakeholder feedback, guidance has been updated to include vendors under "other contract personnel" if they regularly work in the facility, regardless of clinical responsibility or patient contact.
- Please follow this guidance moving forward, and revise data reported for prior weeks if possible



Guidance Surrounding Vendors (cont.)

Contracted and vendor HCP can include the following non-employee care providers who may or may not be involved in patient care

- Admitting staff/clerical support/registrars
- Agency nurses
- Ambulance drivers (who enter the facility to assist with transportation)
- Biomedical engineers
- Central supply staff
- Chaplains
- Construction workers (working inside the facility)
- Dietary/food service staff
- Dieticians
- Utilization review nurses
- Dialysis technicians
- EKG technicians
- EMG technicians
- Home health aides
- Housekeeping staff
- Information Technology staff
- Laboratory: Phlebotomists
- Laboratory: Technicians
- Landscapers (working inside the facility)
- Laundry staff
- Maintenance staff/engineers
- Nursing aides
- Occupational therapists



Guidance Surrounding Vendors

Contracted and vendor HCP can include the following non-employee care providers who may or may not be involved in patient care (cont.)

- Patient care technicians
- Patient transporters
- Pharmacists
- Pharmacy/medication technicians
- Physical therapists
- Psychologists
- Psychology technicians/Mental health workers
- Radiology: X-ray technicians
- Recreational therapists/Music therapists
- Respiratory therapists
- Security staff
- Social workers/Case managers
- Speech therapists
- Surgical technicians
- Traveling nurses
- Ultrasound technicians



Guidance on Medical Contraindications

- In accordance with [CDC's latest definition](#) of a medical contraindication, we have clarified that an individual who has a severe allergic reaction after one dose of a COVID-19 vaccine should be classified as a medical contraindication (Question 3.1) rather than a partial vaccination (Question 2.1/2.3).
- CDC considers a history of the following to be a medical contraindication to vaccination with COVID-19 vaccines:
 - Severe allergic reaction (e.g., anaphylaxis) after a previous dose or to a component of the COVID-19 vaccine
 - Known diagnosed allergy to a component of the COVID-19 vaccine
 - For the Janssen COVID 19 Vaccine, thrombocytopenia syndrome (TTS) following receipt of a previous Janssen COVID-19 Vaccine (or other COVID-19 vaccines not currently authorized in the United States that are based on adenovirus vectors)



Removal of Eligibility Question

- In the February 2022 release of the application the question on individuals **eligible** for Additional Dose or Booster (currently Question 4), will no longer be included
- Reasons for the removal of **this question** include:
 - Simplification of reporting for users
 - Unnecessary since almost everyone is now eligible for a booster dose

4. * **Cumulative** number of HCP in Question #2 who have received an additional dose or booster of COVID-19 vaccine at this facility or elsewhere since August 2021 :

PFIZBION3 - Additional dose or booster of Pfizer-BioNTech COVID-19 vaccine						
* MODERNA3 - Additional dose or booster of Moderna COVID-19 vaccine						
A	JANSSEN2 - Additional dose or booster of Janssen COVID-19 vaccine					
o	UNSPECIFIED2 - Additional dose or booster of unspecified manufacturer					
COVID-19						
vaccine series						



Vaccine Data Tracking Worksheet Updates for 2022

- The Vaccine Data Tracking Worksheets have been updated for 2022. Links can be found on NHSN webpages under the “Data Tracking Worksheets” section:
 - Long-term care facilities reporting COVID-19 vaccination data on residents and healthcare personnel: [LTC Weekly HCP & Resident COVID-19 Vaccination](#)
 - Inpatient and dialysis facilities reporting COVID-19 vaccination data on healthcare personnel: [Non-LTC Weekly HCP COVID-19 Vaccination](#)
 - Dialysis facilities reporting COVID-19 vaccination data on patients: [Dialysis Weekly Patient COVID-19 Vaccination](#)
- Looking ahead: NHSN is working to create a new functionality in the application to allow users to manage their person-level tracking worksheet in the application. Information about training opportunities coming Spring 2022.



Frequently Asked Questions



Question 1

- How do I categorize an individual who was granted a religious or personal belief exemption to COVID-19 vaccination according to their facility's policy?
- An individual who declines to receive vaccination for any reason other than the medical contraindications listed in [Interim Clinical Considerations for Use of COVID-19 Vaccines Currently Approved or Authorized in the United States](#) should be categorized as **declined** to receive COVID-19 vaccination for question 3.2. This is true even if your facility permits religious or philosophical exemptions for COVID-19 vaccination.



Question 2

- An individual received the first dose of a primary COVID-19 vaccine but had a severe allergic reaction to this. As a result, the individual did not receive the second vaccine dose. How should we categorize this individual?
- –The individual should be categorized in question 3.1 as having a medical contraindication to COVID-19 vaccine due to their severe allergic reaction after a previous dose of COVID-19 vaccine.



Question 3

- **Vendors or sales representatives come into my facility or unit and may be present during surgeries or other patient care activities. Should we count these vendors in the other contract personnel category?**
- –Yes, vendors providing care, treatment, or services should be included in the other contract personnel category if they work in the facility on a regular (weekly) basis, regardless of clinical responsibility or patient contact.



Question 4

- **If an individual works at multiple facilities, does each facility need to report vaccination data for this individual through NHSN?**
 - Yes. These reports describe vaccination rates among individuals working at a specific facility, so all eligible individuals must be counted at each facility where they work during the week of data collection.
- Example: If an individual is scheduled to work at least 1 day each week at three separate facility locations, then that individual would be included in the data for each facility.



Question 5

- Who should facilities contact with questions about reporting requirements?
- Facilities can contact CMS with questions about reporting requirements:
 - Inpatient quality reporting program (hospitals): iqr@hsag.com
 - PPS-exempt cancer hospital quality reporting program: QRFormsSubmission@hsag.com
 - Inpatient psychiatric facility quality reporting program: IPFQualityReporting@hsag.com
 - Inpatient rehabilitation facility quality reporting program: IRF.questions@cms.hhs.gov
 - Long-term acute care quality reporting program: LTCHQualityQuestions@cms.hhs.gov
 - Long-term care facilities: DNH_TriageTeam@cms.hhs.gov
 - Ambulatory Surgery Centers: oqrsupport@hsag.com



Reporting Cumulative Data



Cumulative versus Incident Vaccination Data

- **Cumulative vaccination data** are the **total number** of individuals who have **ever received** the COVID-19 vaccine since it became available
- **Incident vaccination data** are the number of **new** individuals who received COVID-19 vaccine in a specific week

Incident data are not used for reporting COVID-19 vaccination data in NHSN!



Where to Report Cumulative Data in NHSN

- **Question 2:** Cumulative number of individuals in Question 1 (the denominator) who have received primary series COVID-19 vaccines at this facility or elsewhere (for example, a pharmacy) since they became available in December 2020.
- **Question 4 (post new release):** Cumulative number of individuals with complete primary series vaccine in question #2 who have received an additional dose or booster of COVID-19 vaccine at this facility or elsewhere since August 2021.



Note about Question 4

- Remainder of presentation will refer to the post-February 2022 NHSN release version of Question 4 which asks about the cumulative number of individuals in Question 2 who have received an additional or booster dose

4. * **Cumulative** number of residents in Question #2 who have received an additional dose or booster of COVID-19 vaccine at this facility or elsewhere since 07/19/2021 :

* Any Additional dose or booster of COVID-19 vaccine series

COVID-19 Vaccine(s) Supply

Please contact your state or local health jurisdiction if there is insufficient supply of COVID-19 vaccine available or if your facility is interested in becoming a COVID-19 vaccine provider.

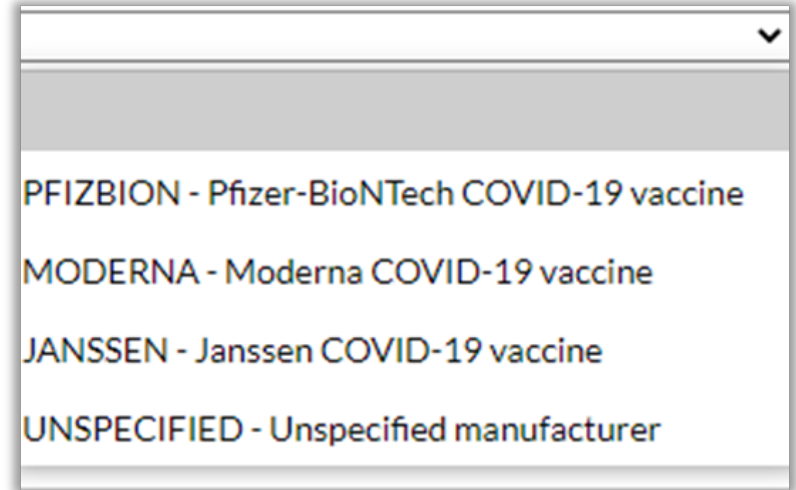
5. For the current reporting week, please describe the availability of COVID-19 vaccine(s) for your facility's residents:

Post February 2022 release version



How to Report Cumulative Data For the Number of Individuals in Question 1 who have Received Primary Series COVID-19 Vaccines (Question 2)

- **First:** Select a COVID-19 vaccine from the drop-down box
 - *Pfizer-BioNTech*
 - *Moderna*
 - *Janssen*
 - *Complete COVID-19 vaccination series:
Unspecified manufacturer*



A screenshot of a drop-down menu with a white background and a grey header bar. The menu is open, showing four options in black text. The options are: 'PFIZBION - Pfizer-BioNTech COVID-19 vaccine', 'MODERNA - Moderna COVID-19 vaccine', 'JANSSEN - Janssen COVID-19 vaccine', and 'UNSPECIFIED - Unspecified manufacturer'. A small downward-pointing arrow is visible in the top right corner of the menu box.

How to Report Cumulative Data For Question 2 (Cont.)

- **Second:** Enter cumulative number of individuals who have ever received only dose 1 of the COVID-19 vaccine since it became available in December 2020
- **Third:** Enter cumulative number of individuals who have ever received dose 1 and dose 2 of the COVID-19 vaccine since it became available in December 2020

Note: Facilities should report COVID-19 vaccination data for all vaccine manufacturers as applicable. If individuals received another type of vaccine, then return to the drop-down box and select the other vaccine and repeat steps 1 through 3 as described above.



Cumulative Data Reporting Example for Question 2

- Week 1: 50 individuals in facility: 10 received 1st vaccine dose, 5 received 2nd vaccine dose

Question	Week 1	Week 2	Week 3
1. Number of individuals working in or receiving care at the facility for at least 1 day during the week of data collection	50	-	-
2.1. Cumulative number of individuals in question #1 who received <u>only</u> dose 1 of Pfizer-BioNTech COVID-19 vaccine	10	-	-
2.2. Cumulative number of individuals in question #1 who received dose 1 <u>and</u> dose 2 of Pfizer-BioNTech COVID-19 vaccine	5	-	-



Cumulative Data Reporting Example for Question 2 (Cont.)

- Week 1: 50 individuals in facility: 10 received 1st vaccine dose, 5 received 2nd vaccine dose
- **Week 2: 5 more individuals received 1st dose**

Question	Week 1	Week 2	Week 3
1. Number of individuals working in or receiving care at the facility for at least 1 day during the week of data collection	50	50	-
2.1. Cumulative number of individuals in question #1 who received <u>only</u> dose 1 of Pfizer-BioNTech COVID-19 vaccine	10	(10+5) 15	-
2.2. Cumulative number of individuals in question #1 who received dose 1 <u>and</u> dose 2 of Pfizer-BioNTech COVID-19 vaccine	5	5	-



Cumulative Data Reporting Example for Question 2 (Cont.)

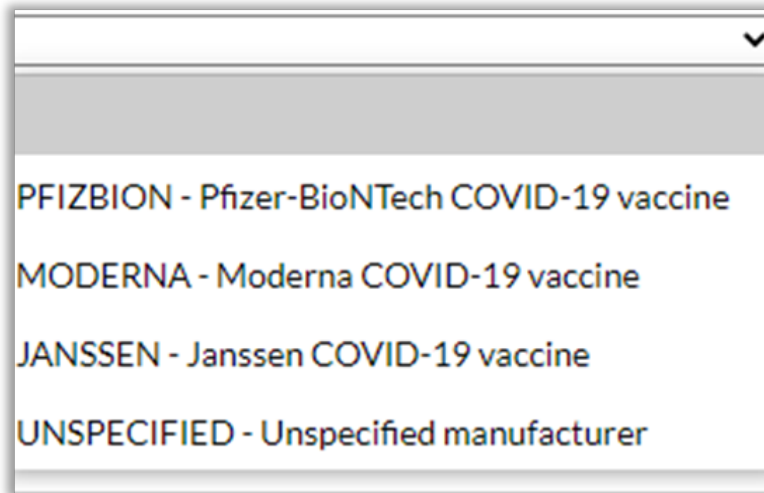
- Week 1: 50 individuals in facility: 10 received 1st vaccine dose, 5 received 2nd vaccine dose
- Week 2: 5 more individuals received 1st dose
- **Week 3: 3 more individuals received 1st dose; 10 individuals received 2nd dose**

Question	Week 1	Week 2	Week 3
1. Number of individuals working in or receiving care at the facility for at least 1 day during the week of data collection	50	50	50
2.1. Cumulative number of individuals in question #1 who received <u>only</u> dose 1 of Pfizer-BioNTech COVID-19 vaccine	10	15	(15+3-10) 8
2.2. Cumulative number of individuals in question #1 who received dose 1 <u>and</u> dose 2 of Pfizer-BioNTech COVID-19 vaccine	5	5	(5+10) 15



How to Report Cumulative Data For the Number of Individuals in Question 2 who have Received an Additional or Booster Dose (Question 4)

- **First:** Select a COVID-19 vaccine from the drop-down box
 - *Pfizer-BioNTech*
 - *Moderna*
 - *Janssen*
 - *Complete COVID-19 vaccination series: Unspecified manufacturer*



A screenshot of a drop-down menu with a downward arrow in the top right corner. The menu is open, showing four options: PFIZBION - Pfizer-BioNTech COVID-19 vaccine, MODERNA - Moderna COVID-19 vaccine, JANSSEN - Janssen COVID-19 vaccine, and UNSPECIFIED - Unspecified manufacturer.

How to Report Cumulative Data For Question 4 (Cont.)

- Second: Enter the cumulative number of individuals in question 2 who have ever received an additional dose or booster of COVID-19 vaccine at this facility or elsewhere since August 2021.
- Note: If a facility does not have any individuals who received an additional dose or booster of COVID-19 vaccine, the facility should enter a zero (“0”)



Cumulative Data Reporting Example for Question 4

- Week 1: You have 50 individuals at the facility (Question 1). Of the 50, 10 received doses 1 and 2 of the vaccine (Question 2.2) and 5 had received an additional or booster dose

Question	Week 1	Week 2
1. Number of individuals working in or receiving care at the facility for at least 1 day during the week of data collection	50	-
2.2. Cumulative number of individuals in question #1 who received dose 1 <u>and</u> dose 2 of Pfizer-BioNTech COVID-19 vaccine	10	-
4.1. Cumulative number of individuals who received and additional dose or booster	5	-



Cumulative Data Reporting Example for Question 4 (Cont.)

- Week 1: You have 50 individuals at the facility (Question 1). Of the 50, 10 received doses 1 and 2 of the vaccine (Question 2.2) and 5 had received an additional or booster dose
- **Week 2: You have the same number of individuals at the facility (50). 5 more received the first and second dose (Question 2.2) and 1 more received an additional or booster dose (Question 4).**

Question	Week 1	Week 2
1. Number of individuals working in or receiving care at the facility for at least 1 day during the week of data collection	50	50
2.2. Cumulative number of individuals in question #1 who received dose 1 <u>and</u> dose 2 of Pfizer-BioNTech COVID-19 vaccine	10	(10+5) 15
4.1. Cumulative number of individuals who received and additional dose or booster	5	(5+1) 6



Cumulative Data Reporting Example for Question 4 (Cont.)

- For more examples, please review a Quick Learn demonstration on cumulative data reporting: -https://www.youtube.com/watch?v=NKQlhs_pWkM

Training

Review of COVID-19 Vaccination Modules: Frequently Asked Questions and Data Entry – November 2021

- [Slideset](#)  [PDF – 2 MB]

Reporting Weekly COVID-19 Vaccination Data – September 2021

- [YouTube Link](#) [Video – 51 min]
- [Slideset](#)  [PDF – 2 MB]

NHSN Quick Learn Demonstration: Reporting Weekly Cumulative COVID-19 Vaccination Data – May 2021

- [YouTube Link](#) [Video – 21 min]
- [Slideset](#)  [PDF – 1 MB]



Reminders for Common Mistakes

- If data are the same from week to week, carry over that data.
- Try clearing cookies if you are having technical difficulties
- Questions 2 and 3 in the form should be based off the number of individuals reported in Question 1.
- The number of boosters or additional doses reported in Question 4 cannot be more than the total number of individuals with complete primary vaccine series reported in Question 2.



Resources



Recommendations for Additional Doses or Boosters

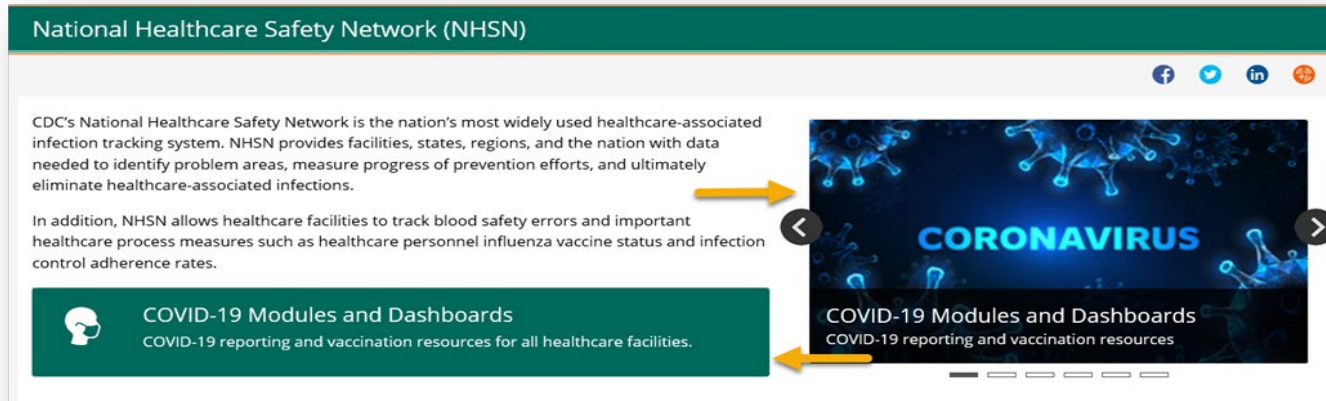
Facilities should refer to the [CDC's Interim Clinical Considerations for Use of COVID-19 Vaccines Currently Approved or Authorized in the United States to](#) to determine individuals who are eligible to receive additional doses or boosters after receiving an initial completed vaccination series. **As of January 16, 2022, an update for individuals eligible to receive an additional or booster dose include the following:**

If you received:	Who should get a booster"	When to get a booster:	Which booster can you get:
Pfizer-BioNTech	Everyone 12 years or older	At least 5 months after completing your primary COVID-19 vaccination series	-Pfizer-BioNTech or Moderna are preferred in most situations -Teens 12-17 years old may only get Pfizer-BioNTech
Moderna	Adults 18 years and older	At least 5 months after completing your primary COVID-19 vaccination series	-Pfizer-BioNTech or Moderna are preferred in most situation
Johnson & Johnson's Janssen	Adults 18 years and older	At least 2 months after receiving your J&J vaccine	-Pfizer-BioNTech or Moderna are p referred in most situation



Resource: The NHSN Website

- To access the **COVID-19 Modules and Dashboards** from the NHSN home page located at: <https://www.cdc.gov/nhsn/index.html>
- Click the image of choice depicted by the gold arrows below to access all vaccination pages.



Resource: The NHSN Website (cont.)

Facility Direct Links:

Long term Care:

- [Weekly HCP & Resident COVID-19 Vaccination | LTCF | NHSN | CDC](#)

Non-Long-term Care:

- [Weekly HCP COVID-19 Vaccination | HPS | NHSN | CDC](#)

Dialysis Patients:

- [Weekly Patient COVID-19 Vaccination | Dialysis | NHSN | CDC](#)

▪ Direct link to access training materials:

- Training slides
- Forms & Instructions
- .CSV Data Import
- Data Tracking Worksheets
- FAQs

Questions or Need Help?

E-mail user support at: nhsn@cdc.gov

Please write '*Weekly COVID-19 Vaccination*' in the subject line of the e-mail along with your facility type

For more information, contact CDC
1-800-CDC-INFO (232-4636)
TTY: 1-888-232-6348 www.cdc.gov

The findings and conclusions in this report are those of the authors and do not necessarily represent the official position of the Centers for Disease Control and Prevention.

