

## NHSN Long-term Care Facility (LTCF) COVID-19 Vaccination Module: Groups and Supergroups - Viewing and Uploading COVID-19 Vaccination Reporting Pathway .CSV Data Files

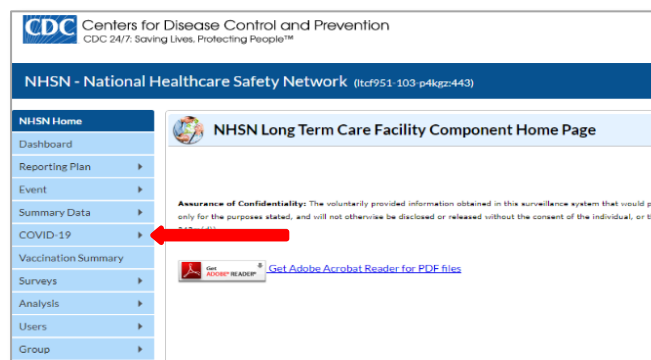
### Description

As part of CDC’s ongoing COVID-19 response, long-term care facilities (LTCFs) enrolled in the National Healthcare Safety Network (NHSN) can report data using the LTCF COVID-19 Vaccination Module. Group and supergroup users can import resident and healthcare personnel (HCP) COVID-19 vaccination data on behalf of their member facilities who report to this module. The purpose of this guidance document is to provide important information and instructions for how groups and supergroups can import .CSV files and view summary data in the NHSN LTCF COVID-19 Vaccination Module.

Facilities can be members of several groups in NHSN. These groups can view facility data. Therefore, facilities should decide which group can import .CSV files. If data have been uploaded into NHSN for a facility by one group or supergroup via the .CSV bulk upload, these data can be overwritten by a second group uploading data for the facility at a later time or date. Therefore, NHSN recommends that facilities only grant access to one group/supergroup to upload data on their behalf. Groups or Supergroups can include health departments. It is also important to note that if a facility has entered its own data, it will not be overwritten by a bulk upload by a group/supergroup.

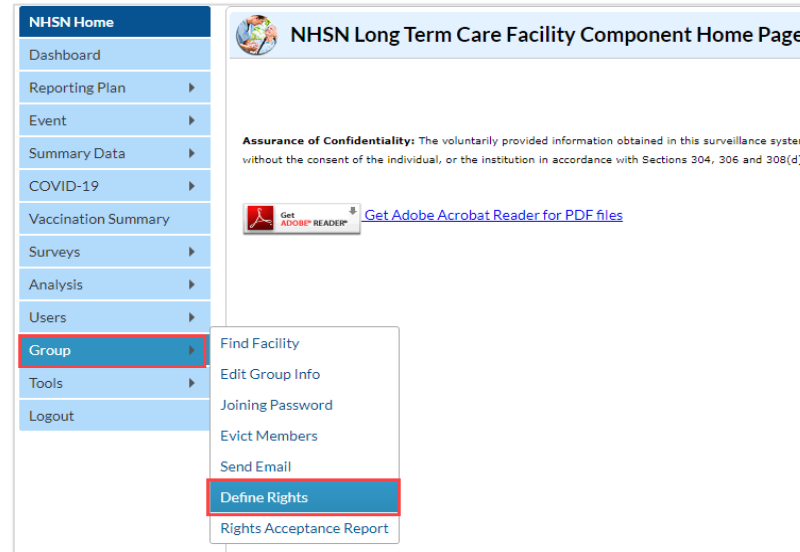
**Facilities choosing to upload their data by working directly with a vendor will need to work with the vendor to provide their NHSN OrgID and establish the process.** Vendors (e.g., EHR providers, EOC providers, etc.) intending to provide COVID-19 .CSV uploads on behalf of NHSN facilities should submit an inquiry to [NHSN@cdc.gov](mailto:NHSN@cdc.gov) with the title “Vendor Support for NHSN COVID-19 Long-term Care Facility (LTCF) Reporting.” NHSN will follow up to confirm procedural details as the process may differ by vendor.

Please note: If accessing NHSN through different level of SAMS credentials, the interface will look slightly different as shown below but all functionality related to COVID-19 data reporting are the same.

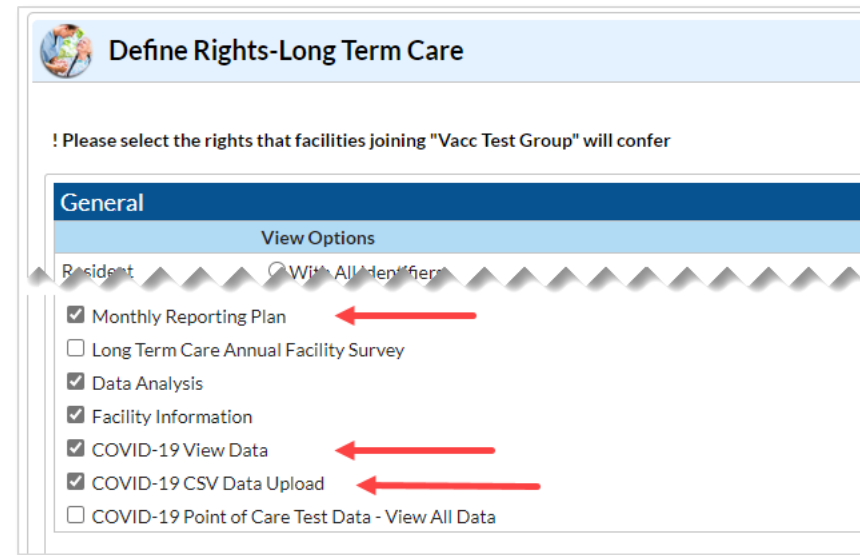


## Instructions for Groups and Supergroups: Defining and Conferring Rights

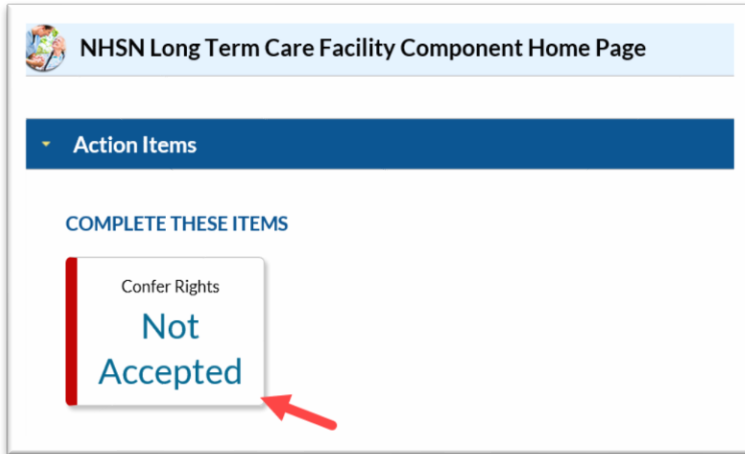
1. **Group** – After logging into an NHSN component, select Group from the menu bar and then select Define Rights.



2. **Group** – After selecting Define Rights, the Define Rights options for the component will be displayed. Under General, there are new Rights for COVID-19 vaccination data. The new Rights allow viewing of COVID-19 Vaccination Module summary data for facilities that are a part of the group. Check “COVID-19 View Data” and “COVID-19 CSV Data Upload.” By selecting “COVID-19 CSV Data Upload” the group will have the ability to import .CSV data files for facilities who accept the define rights. Group users can also select “Monthly Reporting Plan” to view monthly reporting plan data for facilities within the group. Select Save at the bottom of the page to Define the additional Rights.



- 3. **Group** – The **Facility** group member will need to confer rights (accept the newly defined right(s)) by clicking on Confer Rights Not Accepted under Action Items.



- 4. **Group** – The **Facility** will see a Confer Rights Not Accepted List. From the list, select the group for which the facility would like to view the new Defined Rights.



5. **Group** –The group will have added defined COVID-19 Rights if the boxes next to “COVID-19 View Data” and “COVID-19 CSV Data Upload” are checked. The group will have added defined Rights for monthly reporting plan data if the box next to “Monthly Reporting Plan” is checked. The **Facility** may select “Accept” to save the newly conferred Rights. The Facility must accept the newly defined Rights for its data to be viewable to the group.

**Confer Rights-Long Term Care**

! Please review the data rights that "Vacc Test Group" is requesting from your facility:  
- Verify locations  
- Press "accept" button to confer rights

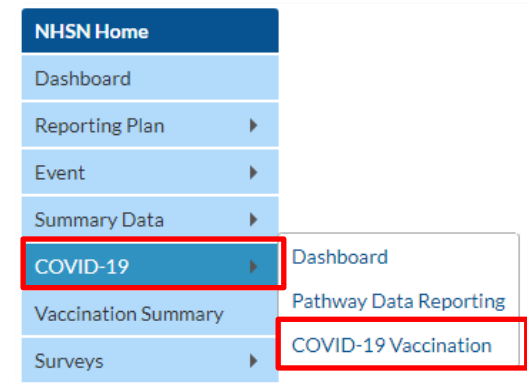
**General**

- Monthly Reporting Plan
- Long Term Care Annual Facility Survey
- Data Analysis
- Facility Information
- COVID-19 View Data
- COVID-19 CSV Data Upload
- COVID-19 Point of Care Test Data - View All Data

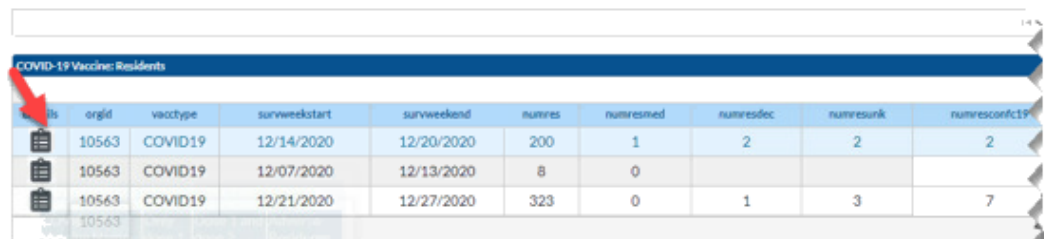
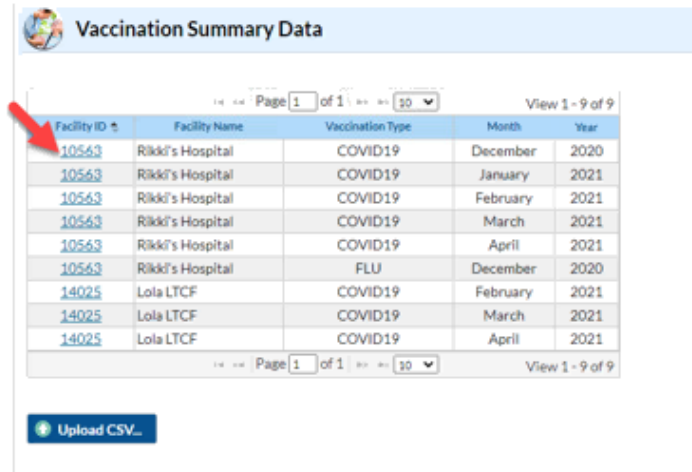
**Accept** **Back**

### Instructions to Upload and Export .CSV Files for both Group and Supergroup Users

1. **Group/Super Group** – Select COVID-19 from the menu bar to view specific pathway data. Next, select “COVID-19 Vaccination”.



A list of facilities in your group or supergroup that have entered vaccination data by month will be displayed. Select the Facility ID/Month to view the data for that month. (All data in screenshots are for illustration only.)



2. **Download Templates** –The .CSV templates for COVID-19 Weekly Vaccination Summary Data can be found at NHSN LTCF Weekly Healthcare Personnel (HCP) and Resident COVID-19 Vaccination webpage: <https://www.cdc.gov/nhsn/ltc/weekly-covid-vac/index.html>.

The screenshot displays the 'CSV Data Import' section of a website. It features a list of download links for PDF and CSV files, organized into sections for 'Residents of LTCFs COVID-19 Vaccination Data' and 'Healthcare Personnel of LTCFs COVID-19 Vaccination Data'. The 'CSV File Template (10.1.1)' link is highlighted in yellow in both sections.

### CSV Data Import

[Uploading Group COVID-19 .CSV Data Files \(10.1.1\)](#) [PDF - 1 MB] - February 2022

[Uploading Group COVID-19 .CSV Data Files \(10.0\)](#) [PDF - 1 MB] - September 2021

[Uploading Group COVID-19 .CSV Data Files \(Pre 10.0\)](#) [PDF - 1 MB] - August 2021

Residents of LTCFs COVID-19 Vaccination Data

- [CSV File Template \(10.1.1\)](#) [CSV - 2 KB] - February 2022
- [Example CSV File \(10.1.1\)](#) [CSV - 2 KB] - February 2022

Healthcare Personnel of LTCFs COVID-19 Vaccination Data

- [CSV File Template \(10.1.1\)](#) [CSV - 3 KB] - February 2022
- [Example CSV File \(10.1.1\)](#) [CSV - 3 KB] - February 2022
- [CSV File Template \(10.0\)](#) [CSV - 2 KB] - September 2021

3. **Enter Data** – Using the provided .CSV templates for LTCF resident and LTCF healthcare personnel data, populate each variable with the appropriate data. Multiple facilities (those that are a part of the group and have conferred rights) may be included. A valid facility identifier is required. After entering all data, save each file to upload the .CSV file in NHSN.

For complete information on the variables included on the .CSV templates, refer to the tables at end of this document (“Table 1: NHSN Resident COVID-19 Vaccination Data Import File Format” and “Table 2: NHSN HCP COVID-19 Vaccination Data Import File Format”). Example .CSV files that include test data in required fields are available from NHSN’s LTC Weekly Healthcare Personnel (HCP) and Resident COVID-19 Vaccination webpage: <https://www.cdc.gov/nhsn/ltc/weekly-covid-vac/index.html>.

The screenshot displays the 'CSV Data Import' section of a website. It features a list of links for PDF guides and CSV templates, organized into two main categories: Residents of LTCFs and Healthcare Personnel. The 'Example CSV File (10.1.1)' links are highlighted in yellow.

**CSV Data Import**

- [Uploading Group COVID-19 .CSV Data Files \(10.1.1\)](#) [PDF – 1 MB] – February 2022
- [Uploading Group COVID-19 .CSV Data Files \(10.0\)](#) [PDF – 1 MB] – September 2021
- [Uploading Group COVID-19 .CSV Data Files \(Pre 10.0\)](#) [PDF – 1 MB] – August 2021

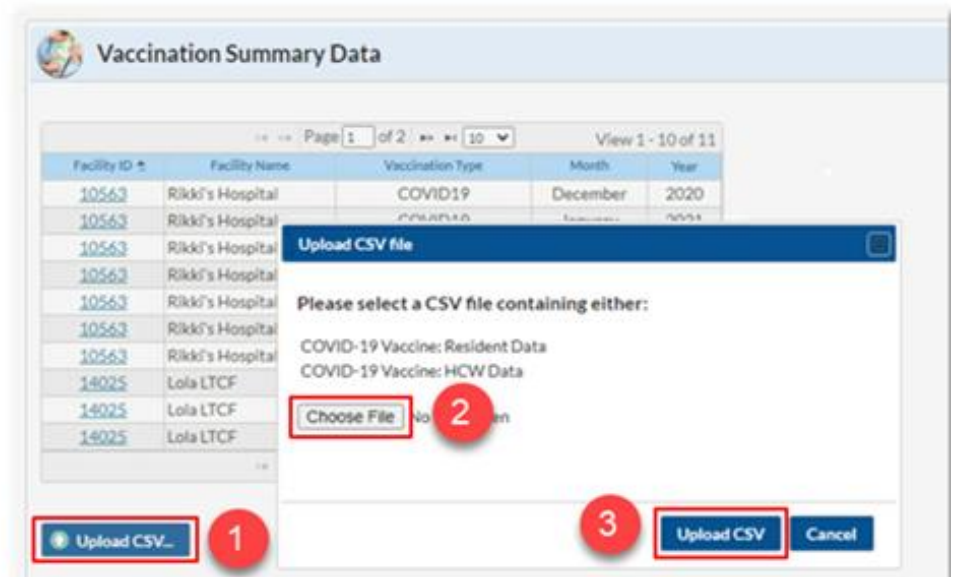
**Residents of LTCFs COVID-19 Vaccination Data**

- [CSV File Template \(10.1.1\)](#) [CSV – 2 KB] – February 2022
- [Example CSV File \(10.1.1\)](#) [CSV – 2 KB] – February 2022

**Healthcare Personnel of LTCFs COVID-19 Vaccination Data**

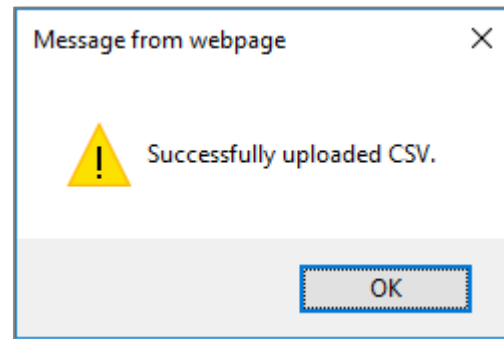
- [CSV File Template \(10.1.1\)](#) [CSV – 3 KB] – February 2022
- [Example CSV File \(10.1.1\)](#) [CSV – 3 KB] – February 2022
- [CSV File Template \(10.0\)](#) [CSV – 2 KB] – September 2021

- 4. **Upload .CSV** – To upload the completed .CSV Data file, select the “COVID-19” tab from the menu bar. Next, select “COVID-19 Vaccination”. A list of facilities by month will be displayed. Click on the “Upload CSV” button. A prompt will appear where a file must be provided for submission. Browse for the file location and then click “Upload CSV” to begin the import.





6. **View Data** – A message that indicates the upload was successful will be generated. The Vaccination Module will automatically populate the uploaded data. Users can then select a facility for which data were added to view the record.



If errors are found during upload, please review the alerts and refer to the tables at the end of this document (“Table 1: NHSN Resident COVID-19 Vaccination Data Import File Format” and “Table 2: NHSN HCP COVID-19 Vaccination Data Import File Format”) for complete information on the variables included on .CSV templates. Questions can be submitted to [NHSN@CDC.GOV](mailto:NHSN@CDC.GOV) with “Weekly COVID-19 Reporting CSV upload” in the subject line.

7. **View and Export Line List Data Reports** – Users are encouraged to utilize the analysis and reporting functionality built within NHSN to view and export line list data reports for COVID-19 vaccination data for healthcare personnel and residents. For more information, view our Quick Reference Guides on how to modify and export line lists available under the “Resources” section of NHSN’s LTC Weekly Healthcare Personnel (HCP) and Resident COVID-19 Vaccination webpage: <https://www.cdc.gov/nhsn/ltc/weekly-covid-vac/index.html>

## Group - Importing via .csv file - *COVID-19 Weekly Vaccination Summary – Residents* - LTC Component - NHSN release **10.1.1** (February 2022)

Table 1: NHSN Resident COVID-19 Vaccination Data Import File Format

Field	Requirement	Values	Format <sup>†</sup>	Description of Field
orgid	<b>Required</b>	-	-	Must be a valid NHSN Facility ID (organization identifier)
vacctype	<b>Required</b>	COVID19	-	Vaccination Type
survweekstart	<b>Required</b>	MM/DD/YYYY ( <b>Monday</b> through Sunday reporting)	-	Week of data collection, start date  (date must be a Monday; must be no later than current date)
survweekend	<b>Required</b>	MM/DD/YYYY (Monday through <b>Sunday</b> reporting)	-	Week of data collection, end date  (date must be a Sunday; must be no later than current date)
numres	<b>Required</b>	0 – 3000  Must be ≤ 3,000  AND = sum of (numResVacc[0] + numResVacc[1] + numResVacc[2] numResVacc[3] + numResVacc[4] numResVacc[5])+ numResMed + numResDec + numResUnk)	Must be a whole number	Number of residents staying in this facility for at least 1 day during the week of data collection
numresmed	<b>Required</b>	-	Must be a whole number	Cumulative number of residents, from numres, with a medical contraindication or exclusion to COVID-19 vaccine and did not receive COVID-19 vaccine

Field	Requirement	Values	Format <sup>†</sup>	Description of Field
numresdec	Optional	-	Must be a whole number	Cumulative number of residents, from numres, who were offered but declined to receive COVID-19 vaccine
numresunk	Optional	-	Must be a whole number	Cumulative number of residents, from numres, with an unknown COVID-19 vaccination status
vaccprovider <i>Applicable for records with version ≥ 9.5.2</i>	<b>Required</b>	Y for Yes N for No	-	Is your facility enrolled as a COVID-19 vaccination provider?
vaccsuffsupplyoffer <i>Applicable for records with version ≥ 9.5.2</i>	Conditionally Required Required if vaccProvider = Y	Y for Yes N for No	-	Did your facility have a sufficient supply of COVID-19 vaccine(s) to offer all residents the opportunity to receive COVID-19 vaccine(s) from your facility in the current reporting week?
vaccOthSuffSupplyoffer <i>Applicable for records with version ≥ 9.5.2</i>	Conditionally Required Required if vaccProvider = N or vaccSuffSupply = N	Y for Yes N for No	-	Did your facility have other arrangements sufficient to offer all residents the opportunity to receive COVID-19 vaccine(s) in the current reporting week?
Vaccsupplyissue <i>Applicable for records with version ≥ 9.5.2</i>	Optional	-	Alpha numeric up to 200 characters	Describe any other COVID-19 vaccination supply-related issue(s) at your facility
vacC19VOs[0].covid19vaccinename	Conditionally Required Required if reporting Pfizer-BioNTech COVID-19 vaccine	PFIZBION	-	COVID-19 Vaccine Name (PFIZBION – Pfizer-BioNTech COVID-19 vaccine)
vacC19VOs[0].covid19vaccine	Conditionally Required Required if reporting Pfizer-BioNTech COVID-19 vaccine	PFIZBION1	-	COVID-19 Vaccine – PFIZBION1 (only dose 1 of Pfizer-BioNTech COVID-19 vaccine)

Field	Requirement	Values	Format <sup>†</sup>	Description of Field
vacC19VOs[0].numresvacc	Conditionally Required Required if reporting Pfizer-BioNTech COVID-19 vaccine	Must be ≤ numres	-	Cumulative number of residents, from numres, who have received PFIZBION1 (only dose 1 of Pfizer-BioNTech COVID-19 vaccine at this facility or elsewhere)
vacC19VOs[1].covid19vaccinename	Conditionally Required Required if reporting Pfizer-BioNTech COVID-19 vaccine	PFIZBION	-	COVID-19 Vaccine Name (PFIZBION – Pfizer-BioNTech COVID-19 vaccine)
vacC19VOs[1].covid19vaccine	Conditionally Required Required if reporting Pfizer-BioNTech COVID-19 vaccine	PFIZBION	-	COVID-19 Vaccine - PFIZBION (dose 1 and dose 2 of Pfizer-BioNTech COVID-19 vaccine)
vacC19VOs[1].numresvacc	Conditionally Required Required if reporting Pfizer-BioNTech COVID-19 vaccine	Must be ≤ numres	-	Cumulative number of residents, from numres, who have received dose 1 and dose 2 of Pfizer-BioNTech COVID-19 vaccine at this facility or elsewhere
vacC19VOs[2].covid19vaccinename	Conditionally Required Required if reporting Moderna COVID-19 vaccine	MODERNA	-	COVID-19 Vaccine Name (MODERNA COVID-19 vaccine)
vacC19VOs[2].covid19vaccine	Conditionally Required Required if reporting Moderna COVID-19 vaccine	MODERNA1	-	COVID-19 Vaccine (MODERNA1 – only dose one of MODERNA COVID-19 vaccine)
vacC19VOs[2].numresvacc	Conditionally Required Required if reporting Moderna COVID-19 vaccine	Must be ≤ numres	-	Cumulative number of residents, from numres, who have received only dose one of MODERNA COVID-19 vaccine at this facility or elsewhere
vacC19VOs[3].covid19vaccinename	Conditionally Required Required if reporting Moderna COVID-19 vaccine	MODERNA	Must be a whole number	COVID-19 Vaccine Name (MODERNA COVID-19 vaccine)

Field	Requirement	Values	Format <sup>†</sup>	Description of Field
vacC19VOs[3].covid19vaccine	Conditionally Required  Required if reporting Moderna COVID-19 vaccine	MODERNA	Must be a whole number	COVID-19 Vaccine (MODERNA – dose 1 and dose 2 of MODERNA COVID-19 vaccine)
vacC19VOs[3].numresvacc	Conditionally Required  Required if reporting Moderna COVID-19 vaccine	Must be ≤ numres	-	Cumulative number of residents, from numres, who have received dose 1 and dose 2 of MODERNA COVID-19 vaccine at this facility or elsewhere
vacC19VOs[4].covid19vaccinename  <i>Note: JANSSEN can be reported starting 3/3/2021 and going forward</i>	Conditionally Required  Required if reporting Janssen COVID-19 vaccine	JANSSEN	-	COVID-19 Vaccine Name (JANSSEN – Janssen COVID-19 vaccine)
vacC19VOs[4].covid19vaccine  <i>Note: JANSSEN can be reported starting 3/3/2021 and going forward</i>	Conditionally Required  Required if reporting Janssen COVID-19 vaccine	JANSSEN	-	COVID-19 Vaccine (JANSSEN – one dose of Janssen COVID-19 vaccine)
vacC19VOs[4].numresvacc	Conditionally Required  Required if reporting Janssen COVID-19 vaccine	Must be ≤ numpat	Must be a whole number	Cumulative number of residents, from numres, who have received JANSSEN COVID-19 vaccine at this facility or elsewhere
vacC19VOs[5].covid19vaccinename  <i>Note: UNSPECIFIED can be reported starting 3/3/2021 and going forward</i>	Conditionally Required  Required if reporting COVID-19 vaccine of unspecified manufacturer	UNSPECIFIED	-	COVID-19 Vaccine Name (UNSPECIFIED – COVID-19 vaccine series: unspecified manufacturer)
vacC19VOs[5].covid19vaccine  <i>Note: UNSPECIFIED can be reported starting 3/3/2021 and going forward</i>	Conditionally Required  Required if reporting COVID-19 vaccine of unspecified manufacturer	UNSPECIFIED	-	COVID-19 Vaccine (UNSPECIFIED – complete series of COVID-19 vaccine series: unspecified manufacturer)

Field	Requirement	Values	Format <sup>†</sup>	Description of Field
vacC19VOs[5].numresvacc	Conditionally Required  Required if reporting COVID-19 vaccine of unspecified manufacturer	Must be ≤ numpat	Must be a whole number	Cumulative number of patients, from numres, who have received a complete primary a complete primary COVID-19 vaccine series: unspecified manufacturer at this facility or elsewhere
vacC19VOs[6].covid19vaccinename	-	-	-	Placeholder for additional vaccine
vacC19VOs[6].covid19vaccine	-	-	-	Placeholder for additional vaccine
vacC19VOs[6].numresvacc	-	-	-	Placeholder for additional vaccine
vacC19VOs[7].covid19vaccinename	-	-	-	Placeholder for additional vaccine
vacC19VOs[7].covid19vaccine	-	-	-	Placeholder for additional vaccine
vacC19VOs[7].numresvacc	-	-	-	Placeholder for additional vaccine
				a complete primary a complete primary
vacC19VOs[8].covid19vaccinename	Conditionally Required  Required if reporting additional primary or booster dose of Pfizer-BioNTech COVID-19 vaccine	PFIZBION	-	COVID-19 Vaccine Name (PFIZBION – Pfizer-BioNTech COVID-19 vaccine)
vacC19VOs[8].covid19vaccine	Conditionally Required  Required if reporting additional primary or booster dose of Pfizer-BioNTech COVID-19 vaccine	PFIZBION3	-	COVID-19 Vaccine - PFIZBION (additional primary or booster dose of Pfizer-BioNTech COVID-19 vaccine)

Field	Requirement	Values	Format <sup>†</sup>	Description of Field
vacC19VOs[8].numresvacc	Conditionally Required  Required if reporting additional primary or booster dose of Pfizer-BioNTech COVID-19 vaccine	Sum of (numResVacc[1] + numResVacc[3] + numResVacc[4] numResVacc[5]) must be >= sum of (vacC19VOs[8].numresvacc + vacC19VOs[9].numresvacc + vacC19VOs[10].numresvacc + vacC19VOs[11].numresvacc)	Must be a whole number	Cumulative number of residents with complete primary vaccine series who have received an additional primary or booster dose of Pfizer-BioNTech COVID-19 vaccine
vacC19VOs[9].covid19vaccinename	Conditionally Required  Required if reporting additional primary or booster dose of Moderna COVID-19 vaccine	MODERNA		COVID-19 Vaccine Name (MODERNA COVID-19 vaccine)
vacC19VOs[9].covid19vaccine	Conditionally Required  Required if reporting additional primary or booster dose of Moderna COVID-19 vaccine	MODERNA3	-	COVID-19 Vaccine (MODERNA – additional primary or booster dose of MODERNA COVID-19 vaccine)
vacC19VOs[9].numresvacc	Conditionally Required  Required if reporting additional primary or booster dose of Moderna COVID-19 vaccine	Sum of (numResVacc[1] + numResVacc[3] + numResVacc[4] numResVacc[5]) must be >= sum of (vacC19VOs[8].numresvacc + vacC19VOs[9].numresvacc + vacC19VOs[10].numresvacc + vacC19VOs[11].numresvacc)	Must be a whole number	Cumulative number of residents with complete primary vaccine series who have received an additional primary or booster dose of Moderna COVID-19 vaccine
vacC19VOs[10].covid19vaccinename	Conditionally Required  Required if reporting additional primary or booster dose of Janssen COVID-19 vaccine	JANSSEN	-	COVID-19 Vaccine Name (JANSSEN COVID-19 vaccine)

Field	Requirement	Values	Format <sup>†</sup>	Description of Field
vacC19VOs[10].covid19vaccine	Conditionally Required  Required if reporting additional primary or booster dose of Janssen COVID-19 vaccine	JANSSEN2	-	COVID-19 Vaccine (JANSSEN – additional primary or booster dose of JANSSEN COVID-19 vaccine)
vacC19VOs[10].numresvacc	Conditionally Required  Required if reporting additional primary or booster dose of Janssen COVID-19 vaccine	Sum of (numResVacc[1] + numResVacc[3] + numResVacc[4] numResVacc[5]) must be >= sum of (vacC19VOs[8].numresvacc + vacC19VOs[9].numresvacc + vacC19VOs[10].numresvacc + vacC19VOs[11].numresvacc)	Must be a whole number	Cumulative number of residents with complete primary vaccine series who have received an additional primary or booster dose of Janssen COVID-19 vaccine
vacC19VOs[11].covid19vaccinename	Conditionally Required  Required if reporting additional primary or booster dose of COVID-19 vaccine of unspecified manufacturer	UNSPECIFIED	-	COVID-19 Vaccine Name (UNSPECIFIED - unspecified manufacturer)
vacC19VOs[11].covid19vaccine	Conditionally Required  Required if reporting additional primary or booster dose of COVID-19 vaccine of unspecified manufacturer	UNSPECIFIED2	-	COVID-19 Vaccine (UNSPECIFIED – additional primary or booster dose of COVID-19 vaccine series: unspecified manufacturer)
vacC19VOs[11].numresvacc	Conditionally Required  Required if reporting additional primary or booster dose of COVID-19 vaccine of unspecified manufacturer	Sum of (numResVacc[1] + numResVacc[3] + numResVacc[4] numResVacc[5]) must be >= sum of (vacC19VOs[8].numresvacc + vacC19VOs[9].numresvacc + vacC19VOs[10].numresvacc + vacC19VOs[11].numresvacc)	Must be a whole number	Cumulative number of residents with complete primary vaccine series who have received an additional primary or booster dose of COVID-19 vaccine: unspecified manufacturer



## Group – Importing via .csv file - *COVID-19 Weekly Vaccination Summary – Healthcare Personnel* - LTC Component - NHSN release 10.1.1 ( February 2022)

Table 2: NHSN Healthcare Personnel COVID-19 Vaccination Data File Format

Field	Requirement	Values	Format†	Description of Field
orgid	Required	-	-	Must be a valid NHSN Facility ID (organization identifier)
vacctype	Required	COVID19	-	Vaccination Type
surweekstart	Required	MM/DD/YYYY (Monday through Sunday reporting)	-	Week of data collection, start date  (date must be a Monday; must be no later than current date)
surweekend	Required	MM/DD/YYYY (Monday through Sunday reporting)	-	Week of data collection, end date  (date must be a Sunday; must be no later than current date)
numEmpHCP	Required	Must be = sum of (vacC19VOs[0].numEmpVacc + vacC19VOs[1].numEmpVacc + vacC19VOs[2].numEmpVacc + vacC19VOs[3].numEmpVacc + vacC19VOs[4].numEmpVacc + vacC19VOs[5].numEmpVacc) + numEmpMed + numEmpDec + numEmpUnk  AND  Sum of numEmpHCP, numLIPHCP, numVolHCP, and numOCPHCP must be <= 50,000	Must be a whole number	Number of employee HCP that were eligible to have worked at this healthcare facility for at least 1 day during the week of data collection

Field	Requirement	Values	Format†	Description of Field
numLIPHCP	<b>Required</b>	<p>Must be = sum of (vacC19VOs[0].numLIPVacc + vacC19VOs[1].numLIPVacc + vacC19VOs[2].numLIPVacc + vacC19VOs[3].numLIPVacc + vacC19VOs[4].numLIPVacc + vacC19VOs[5].numLIPVacc)+ numLIPMed + numLIPDec + numLIPUnk)</p> <p>AND</p> <p>Sum of numEmpHCP, numLIPHCP, numVolHCP, and numOCPHCP must be &lt;= 50,000</p>	Must be a whole number	Number of licensed independent practitioner HCP that were eligible to have worked at this healthcare facility for at least 1 day during the week of data collection
numVolHCP	<b>Required</b>	<p>Must be = sum of (vacC19VOs[0].numVolVacc + vacC19VOs[1].numVolVacc + vacC19VOs[2].numVolVacc + vacC19VOs[3].numVolVacc + vacC19VOs[4].numVolVacc + vacC19VOs[5].numVolVacc)+ numVolMed + numVolDec + numVolUnk)</p> <p>AND</p> <p>Sum of numEmpHCP, numLIPHCP, numVolHCP, and numOCPHCP must be &lt;= 50,000</p>	Must be a whole number	Number of adult student/trainee and volunteer HCP that were eligible to have worked at this healthcare facility for at least 1 day during the week of data collection

Field	Requirement	Values	Format†	Description of Field
numOCPHCP	Required	Must be = sum of (vacC19VOs[0].numOCPVacc + vacC19VOs[1].numOCPVacc + vacC19VOs[2].numOCPVacc + vacC19VOs[3].numOCPVacc + vacC19VOs[4].numOCPVacc + vacC19VOs[5].numOCPVacc)+ numOCPMed + numOCPDec + numOCPUnk)  AND  Sum of numEmpHCP, numLIPHCP, numVolHCP, and numOCPHCP must be <= 50,000	Must be a whole number	Number of other contract personnel that were eligible to have worked at this healthcare facility for at least 1 day during the week of data collection
numEmpMed	Required	Must be <= numEmpHCP	Must be a whole number	Cumulative number of employee HCP with a medical contraindication reason to not receive COVID-19 vaccine
numLIPMed	Required	Must be <= numLIPHCP	Must be a whole number	Cumulative number of licensed independent practitioner HCP with a medical contraindication reason to not receive COVID-19 vaccine
numVolMed	Required	Must be <= numVolHCP	Must be a whole number	Cumulative number of adult student/trainee & volunteer HCP with a medical contraindication reason to not receive COVID-19 vaccine
numOCPMed	Required	Must be <= numOCPHCP	Must be a whole number	Cumulative number of other contract personnel with a medical contraindication reason to not receive COVID-19 vaccine
numEmpDec	Required	Must be <= numEmpHCP	Must be a whole number	Cumulative number of employee HCP who were offered but declined COVID-19 vaccine
numLIPDec	Required	Must be <= numLIPHCP	Must be a whole number	Cumulative number of licensed independent practitioner HCP who were offered but declined COVID-19 vaccine

Field	Requirement	Values	Format†	Description of Field
numVolDec	Required	Must be <= numVolHCP	Must be a whole number	Cumulative number of adult student/trainee and volunteer HCP who were offered but declined COVID-19 vaccine
numOCPDec	Required	Must be <= numOCPHCP	Must be a whole number	Cumulative number of other contract personnel who were offered but declined COVID-19 vaccine
numEmpUnk	Required	Must be <= numEmpHCP	Must be a whole number	Cumulative number of employee HCP with an unknown COVID-19 vaccination status
numLIPUnk	Required	Must be <= numLIPHCP	Must be a whole number	Cumulative number of licensed independent practitioner HCP with an unknown COVID-19 vaccination status
numVolUnk	Required	Must be <= numVolHCP	Must be a whole number	Cumulative number of adult student/trainee & volunteer HCP with an unknown COVID-19 vaccination status
numOCPUnk	Required	Must be <= numOCPHCP	Must be a whole number	Cumulative number of other contract personnel with an unknown COVID-19 vaccination status
vaccprovider <i>Applicable for records with version ≥ 9.5.2</i>	Required	Y for Yes N for No	-	Is your facility enrolled as a COVID-19 vaccination provider?
vaccsuffsupplyoffer <i>Applicable for records with version ≥ 9.5.2</i>	Conditionally Required Required if vaccProvider = Y	Y for Yes N for No	-	Did your facility have a sufficient supply of COVID-19 vaccine(s) to offer all staff the opportunity to receive COVID-19 vaccine(s) from your facility in the current reporting week?

Field	Requirement	Values	Format†	Description of Field
vaccOthSuffSupplyoffer  <i>Applicable for records with version ≥ 9.5.2</i>	Conditionally Required  Required if vaccProvider = N or vaccSuffSupply = N	Y for Yes N for No	-	Did your facility have other arrangements sufficient to offer all staff the opportunity to receive COVID-19 vaccine(s) in the current reporting week?
Vaccsupplyissue  <i>Applicable for records with version ≥ 9.5.2</i>	Optional	-	Alpha numeric up to 200 characters	Describe any other COVID-19 vaccination supply-related issue(s) at your facility
vacC19VOs[0].covid19vacciname	Conditionally Required  Required if reporting Pfizer-BioNTech COVID-19 vaccine	PFIZBION	-	COVID-19 Vaccine Name (PFIZBION – Pfizer-BioNTech COVID-19 vaccine)
vacC19VOs[0].covid19vaccine	Conditionally Required  Required if reporting Pfizer-BioNTech COVID-19 vaccine	PFIZBION1	-	COVID-19 Vaccine – PFIZBION1 (only dose 1 of Pfizer-BioNTech COVID-19 vaccine)
vacC19VOs[0].numEmpVacc	Conditionally Required  Required if reporting Pfizer-BioNTech COVID-19 vaccine	-	Must be a whole number	Cumulative number of employee HCP who have received only 1 dose of Pfizer-BioNTech COVID-19 vaccine
vacC19VOs[0].numLIPVacc	Conditionally Required  Required if reporting Pfizer-BioNTech COVID-19 vaccine	-	Must be a whole number	Cumulative number of licensed independent practitioner HCP who have received only 1 dose of Pfizer-BioNTech COVID-19 vaccine

Field	Requirement	Values	Format†	Description of Field
vacC19VOs[0].numVolVacc	Conditionally Required  Required if reporting Pfizer-BioNTech COVID-19 vaccine	-	Must be a whole number	Cumulative number of adult student/trainee and volunteer HCP who have received only 1 dose of Pfizer-BioNTech COVID-19 vaccine
vacC19VOs[0].numOCPVacc	Conditionally Required  Required if reporting Pfizer-BioNTech COVID-19 vaccine	-	Must be a whole number	Cumulative number of other contract personnel who have received only 1 dose of Pfizer-BioNTech COVID-19 vaccine
vacC19VOs[1].covid19vaccinename	Conditionally Required  Required if reporting Pfizer-BioNTech COVID-19 vaccine	PFIZBION	-	COVID-19 Vaccine Name (PFIZBION – Pfizer-BioNTech COVID-19 vaccine)
vacC19VOs[1].covid19vaccine	Conditionally Required  Required if reporting Pfizer-BioNTech COVID-19 vaccine	PFIZBION	-	COVID-19 Vaccine - PFIZBION (dose 1 and dose 2 of Pfizer-BioNTech COVID-19 vaccine)
vacC19VOs[1].numEmpVacc	Conditionally Required  Required if reporting Pfizer-BioNTech COVID-19 vaccine	-	Must be a whole number	Cumulative number of employee HCP who have received dose 1 and dose 2 of Pfizer-BioNTech COVID-19 vaccine
vacC19VOs[1].numLIPVacc	Conditionally Required  Required if reporting Pfizer-BioNTech COVID-19 vaccine	-	Must be a whole number	Cumulative number of licensed independent practitioner HCP who have received dose 1 and dose 2 of Pfizer-BioNTech COVID-19 vaccine

Field	Requirement	Values	Format†	Description of Field
vacC19VOs[1].numVolVacc	Conditionally Required  Required if reporting Pfizer-BioNTech COVID-19 vaccine	-	Must be a whole number	Cumulative number of adult student/trainee and volunteer HCP who have received dose 1 and dose 2 of Pfizer-BioNTech COVID-19 vaccine
vacC19VOs[1].numOCPVacc	Conditionally Required  Required if reporting Pfizer-BioNTech COVID-19 vaccine	-	Must be a whole number	Cumulative number of other contract personnel who have received dose 1 and dose 2 Pfizer-BioNTech COVID-19 vaccine
vacC19VOs[2].covid19vaccinename	Conditionally Required  Required if reporting Moderna COVID-19 vaccine	MODERNA	-	COVID-19 Vaccine Name (MODERNA COVID-19 vaccine)
vacC19VOs[2].covid19vaccine	Conditionally Required  Required if reporting Moderna COVID-19 vaccine	MODERNA1	-	COVID-19 Vaccine (MODERNA1 – only dose one of MODERNA COVID-19 vaccine)
vacC19VOs[2].numEmpVacc	Conditionally Required  Required if reporting Moderna COVID-19 vaccine	-	Must be a whole number	Cumulative number of employee HCP who have received only 1 dose of Moderna COVID-19 vaccine
vacC19VOs[2].numLIPVacc	Conditionally Required  Required if reporting Moderna COVID-19 vaccine	-	Must be a whole number	Cumulative number of licensed independent practitioner HCP who have received only 1 dose of Moderna COVID-19 vaccine

Field	Requirement	Values	Format†	Description of Field
vacC19VOs[2].numVolVacc	Conditionally Required  Required if reporting Moderna COVID-19 vaccine	-	Must be a whole number	Cumulative number of adult student/trainee and volunteer HCP who have received only 1 dose of Moderna COVID-19 vaccine
vacC19VOs[2].numOCPVacc	Conditionally Required  Required if reporting Moderna COVID-19 vaccine	-	Must be a whole number	Cumulative number of other contract personnel HCP who have received only 1 dose of Moderna COVID-19 vaccine
vacC19VOs[3].covid19vaccinename	Conditionally Required  Required if reporting Moderna COVID-19 vaccine	MODERNA	-	COVID-19 Vaccine Name (MODERNA COVID-19 vaccine)
vacC19VOs[3].covid19vaccine	Conditionally Required  Required if reporting Moderna COVID-19 vaccine	MODERNA	-	COVID-19 Vaccine (MODERNA – dose 1 and dose 2 of MODERNA COVID-19 vaccine)
vacC19VOs[3].numEmpVacc	Conditionally Required  Required if reporting Moderna COVID-19 vaccine	-	Must be a whole number	Cumulative number of employee HCP who have received dose 1 and dose 2 of Moderna COVID-19 vaccine
vacC19VOs[3].numLIPVacc	Conditionally Required  Required if reporting Moderna COVID-19 vaccine	-	Must be a whole number	Cumulative number of licensed independent practitioner HCP who have received dose 1 and dose 2 of Moderna COVID-19 vaccine



Field	Requirement	Values	Format†	Description of Field
vacC19VOs[3].numVolVacc	Conditionally Required  Required if reporting Moderna COVID-19 vaccine	-	Must be a whole number	Cumulative number of adult student/trainee and volunteer HCP who have received dose 1 and dose 2 of Moderna COVID-19 vaccine
vacC19VOs[3].numOCPVacc	Conditionally Required  Required if reporting Moderna COVID-19 vaccine	-	Must be a whole number	Cumulative number of other contract personnel who have received dose 1 and dose 2 Moderna COVID-19 vaccine
vacC19VOs[4].covid19vaccinename  <i>Note: JANSSEN can be reported starting 3/3/2021 and going forward</i>	Conditionally Required  Required if reporting Janssen COVID-19 vaccine	JANSSEN	-	COVID-19 Vaccine Name (JANSSEN – Janssen COVID-19 vaccine)
vacC19VOs[4].covid19vaccine  <i>Note: JANSSEN can be reported starting 3/3/2021 and going forward</i>	Conditionally Required  Required if reporting Janssen COVID-19 vaccine	JANSSEN	-	COVID-19 Vaccine (JANSSEN – one dose of Janssen COVID-19 vaccine)
vacC19VOs[4].numEmpVacc	Conditionally Required  Required if reporting Janssen COVID-19 vaccine	-	Must be a whole number	Cumulative number of employee HCP who have received one dose of Janssen COVID-19 vaccine
vacC19VOs[4].numLIPVacc	Conditionally Required  Required if reporting Janssen COVID-19 vaccine	-	Must be a whole number	Cumulative number of licensed independent practitioner HCP who have received one dose of Janssen COVID-19 vaccine
vacC19VOs[4].numVolVacc	Conditionally Required  Required if reporting Janssen COVID-19 vaccine	-	Must be a whole number	Cumulative number of adult student/trainee and volunteer HCP who have received one dose of Janssen COVID-19 vaccine

Field	Requirement	Values	Format†	Description of Field
vacC19VOs[4].numOCPVacc	Conditionally Required  Required if reporting Janssen COVID-19 vaccine	-	Must be a whole number	Cumulative number of other contract personnel who have received one dose of Janssen COVID-19 vaccine
vacC19VOs[5].covid19vaccinename  <i>Note: UNSPECIFIED can be reported starting 3/3/2021 and going forward</i>	Conditionally Required  Required if reporting COVID-19 vaccine of unspecified manufacturer	UNSPECIFIED	-	COVID-19 Vaccine Name (UNSPECIFIED – COVID-19 vaccine series: unspecified manufacturer)
vacC19VOs[5].covid19vaccine  <i>Note: UNSPECIFIED can be reported starting 3/3/2021 and going forward</i>	Conditionally Required  Required if reporting COVID-19 vaccine of unspecified manufacturer	UNSPECIFIED	-	COVID-19 Vaccine (UNSPECIFIED – complete COVID-19 vaccine series: unspecified manufacturer)
vacC19VOs[5].numEmpVacc	Conditionally Required  Required if reporting COVID-19 vaccine of unspecified manufacturer	-	Must be a whole number	Cumulative number of employee HCP who have received a complete primary a complete primary COVID-19 vaccine series: unspecified manufacturer
vacC19VOs[5].numLIPVacc	Conditionally Required  Required if reporting COVID-19 vaccine of unspecified manufacturer	-	Must be a whole number	Cumulative number of licensed independent practitioner HCP who have received a complete primary a complete primary COVID-19 vaccine series: unspecified manufacturer.
vacC19VOs[5].numVolVacc	Conditionally Required  Required if reporting COVID-19 vaccine of unspecified manufacturer	-	Must be a whole number	Cumulative number of adult student/trainee and volunteer HCP who have received a complete primary a complete primary COVID-19 vaccine series: unspecified manufacturer

Field	Requirement	Values	Format†	Description of Field
vacC19VOs[5].numOCPVacc	Conditionally Required  Required if reporting COVID-19 vaccine of unspecified manufacturer	-	Must be a whole number	Cumulative number of other contract personnel who have received a complete primary a complete primary COVID-19 vaccine series: unspecified manufacturer
vacC19VOs[6].covid19vaccinename	-	-	-	Placeholder for additional vaccine
vacC19VOs[6].covid19vaccine	-	-	-	Placeholder for additional vaccine
vacC19VOs[6].numEmpVacc	-	-	-	Placeholder for additional vaccine
vacC19VOs[6].numLIPVacc	-	-	-	Placeholder for additional vaccine
vacC19VOs[6].numVolVacc	-	-	-	Placeholder for additional vaccine
vacC19VOs[6].numOCPVacc	-	-	-	Placeholder for additional vaccine
vacC19VOs[7].covid19vaccinename	-	-	-	Placeholder for additional vaccine
vacC19VOs[7].covid19vaccine	-	-	-	Placeholder for additional vaccine
vacC19VOs[7].numEmpVacc	-	-	-	Placeholder for additional vaccine
vacC19VOs[7].numLIPVacc	-	-	-	Placeholder for additional vaccine
vacC19VOs[7].numVolVacc	-	-	-	Placeholder for additional vaccine
vacC19VOs[7].numOCPVacc	-	-	-	Placeholder for additional vaccine
vacC19VOs[8].covid19vaccinename	Conditionally Required  Required if reporting additional primary or booster dose of Pfizer-BioNTech COVID-19 vaccine	PFIZBION	-	COVID-19 Vaccine Name (PFIZBION – Pfizer-BioNTech COVID-19 vaccine)
vacC19VOs[8].covid19vaccine	Conditionally Required  Required if reporting additional primary or booster dose of Pfizer-BioNTech COVID-19 vaccine	PFIZBION3	-	COVID-19 Vaccine - PFIZBION (additional primary or booster dose of Pfizer-BioNTech COVID-19 vaccine)

Field	Requirement	Values	Format†	Description of Field
vacC19VOs[8].numEmpVacc	Conditionally Required  Required if reporting additional primary or booster dose of Pfizer-BioNTech COVID-19 vaccine	Sum of (vacC19VOs[1].numempvacc + vacC19VOs[3].numempvacc + vacC19VOs[4].numempvacc + vacC19VOs[5].numempvacc) must be >= sum of (vacC19VOs[8].numempvacc + vacC19VOs[9].numempvacc + vacC19VOs[10].numempvacc + vacC19VOs[11].numempvacc)	Must be a whole number	Cumulative number of employee HCP with complete primary vaccine series who have received an additional primary or booster dose of Pfizer-BioNTech COVID-19 vaccine
vacC19VOs[8].numLIPVacc	Conditionally Required  Required if reporting additional primary or booster dose of Pfizer-BioNTech COVID-19 vaccine	Sum of (vacC19VOs[1].numLIPvacc + vacC19VOs[3].numLIPvacc + vacC19VOs[4].numLIPvacc + vacC19VOs[5].numLIPvacc) must be >= sum of (vacC19VOs[8].numLIPvacc + vacC19VOs[9].numLIPvacc + vacC19VOs[10].numLIPvacc + vacC19VOs[11].numLIPvacc)	Must be a whole number	Cumulative number of licensed independent practitioner HCP with complete primary vaccine series who have received an additional primary or booster dose of Pfizer-BioNTech COVID-19 vaccine
vacC19VOs[8].numVolVacc	Conditionally Required  Required if reporting additional primary or booster dose of Pfizer-BioNTech COVID-19 vaccine	Sum of (vacC19VOs[1].numVolvacc + vacC19VOs[3].numVolvacc + vacC19VOs[4].numVolvacc + vacC19VOs[5].numVolvacc) must be >= sum of (vacC19VOs[8].numVolvacc + vacC19VOs[9].numVolvacc + vacC19VOs[10].numVolvacc + vacC19VOs[11].numVolvacc)	Must be a whole number	Cumulative number of adult student/trainee and volunteer HCP with complete primary vaccine series who have received an additional primary or booster dose of Pfizer-BioNTech COVID-19 vaccine
vacC19VOs[8].numOCPVacc	Conditionally Required  Required if reporting additional primary or booster dose of Pfizer-BioNTech COVID-19 vaccine	Sum of (vacC19VOs[1].numOCPvacc + vacC19VOs[3].numOCPvacc + vacC19VOs[4].numOCPvacc + vacC19VOs[5].numOCPvacc) must be >= sum of (vacC19VOs[8].numOCPvacc + vacC19VOs[9].numOCPvacc + vacC19VOs[10].numOCPvacc + vacC19VOs[11].numOCPvacc)	Must be a whole number	Cumulative number of other contract personnel with complete primary vaccine series who have received an additional primary or booster dose of Pfizer-BioNTech COVID-19 vaccine

Field	Requirement	Values	Format†	Description of Field
vacC19VOs[9].covid19vaccinename	Conditionally Required  Required if reporting additional primary or booster dose of Moderna COVID-19 vaccine	MODERNA	-	COVID-19 Vaccine Name (MODERNA COVID-19 vaccine)
vacC19VOs[9].covid19vaccine	Conditionally Required  Required if reporting additional primary or booster dose of Moderna COVID-19 vaccine	MODERNA3	-	COVID-19 Vaccine (MODERNA – additional primary or booster dose of MODERNA COVID-19 vaccine)
vacC19VOs[9].numEmpVacc	Conditionally Required  Required if reporting additional primary or booster dose of Moderna COVID-19 vaccine	Sum of (vacC19VOs[1].numempvacc + vacC19VOs[3].numempvacc + vacC19VOs[4].numempvacc + vacC19VOs[5].numempvacc) must be >= sum of (vacC19VOs[8].numempvacc + vacC19VOs[9].numempvacc + vacC19VOs[10].numempvacc + vacC19VOs[11].numempvacc)	Must be a whole number	Cumulative number of employee HCP with complete primary vaccine series who have received an additional primary or booster dose of Moderna COVID-19 vaccine
vacC19VOs[9].numLIPVacc	Conditionally Required  Required if reporting additional primary or booster dose of Moderna COVID-19 vaccine	Sum of (vacC19VOs[1].numLIPvacc + vacC19VOs[3].numLIPvacc + vacC19VOs[4].numLIPvacc + vacC19VOs[5].numLIPvacc) must be >= sum of (vacC19VOs[8].numLIPvacc + vacC19VOs[9].numLIPvacc + vacC19VOs[10].numLIPvacc + vacC19VOs[11].numLIPvacc)	Must be a whole number	Cumulative number of licensed independent practitioner HCP with complete primary vaccine series who have received an additional primary or booster dose of Moderna COVID-19 vaccine
vacC19VOs[9].numVolVacc	Conditionally Required  Required if reporting additional primary or booster dose of Moderna COVID-19 vaccine	Sum of (vacC19VOs[1].numVolvacc + vacC19VOs[3].numVolvacc + vacC19VOs[4].numVolvacc + vacC19VOs[5].numVolvacc) must be >= sum of (vacC19VOs[8].numVolvacc + vacC19VOs[9].numVolvacc + vacC19VOs[10].numVolvacc + vacC19VOs[11].numVolvacc)	Must be a whole number	Cumulative number of adult student/trainee and volunteer HCP with complete primary vaccine series who have received an additional primary or booster dose of Moderna COVID-19 vaccine

Field	Requirement	Values	Format†	Description of Field
vacC19VOs[9].numOCPVacc	Conditionally Required  Required if reporting additional primary or booster dose of Moderna COVID-19 vaccine	Sum of (vacC19VOs[1].numOCPvacc + vacC19VOs[3].numOCPvacc + vacC19VOs[4].numOCPvacc + vacC19VOs[5].numOCPvacc) must be >= sum of (vacC19VOs[8].numOCPvacc + vacC19VOs[9].numOCPvacc + vacC19VOs[10].numOCPvacc + vacC19VOs[11].numOCPvacc)	Must be a whole number	Cumulative number of other contract personnel HCP with complete primary vaccine series who have received an additional primary or booster dose of Moderna COVID-19 vaccine
vacC19VOs[10].covid19vaccinename	Conditionally Required  Required if reporting additional primary or booster dose of Janssen COVID-19 vaccine	JANSSEN	-	COVID-19 Vaccine Name (JANSSEN COVID-19 vaccine)
vacC19VOs[10].covid19vaccine	Conditionally Required  Required if reporting additional primary or booster dose of Janssen COVID-19 vaccine	JANSSEN2	-	COVID-19 Vaccine (JANSSEN – additional primary or booster dose of JANSSEN COVID-19 vaccine)
vacC19VOs[10].numEmpVacc	Conditionally Required  Required if reporting additional primary or booster dose of Janssen COVID-19 vaccine	Sum of (vacC19VOs[1].numempvacc + vacC19VOs[3].numempvacc + vacC19VOs[4].numempvacc + vacC19VOs[5].numempvacc) must be >= sum of (vacC19VOs[8].numempvacc + vacC19VOs[9].numempvacc + vacC19VOs[10].numempvacc + vacC19VOs[11].numempvacc)	Must be a whole number	Cumulative number of employee HCP with complete primary vaccine series who have received an additional primary or booster dose of Janssen COVID-19 vaccine
vacC19VOs[10].numLIPVacc	Conditionally Required  Required if reporting additional primary or booster dose of Janssen COVID-19 vaccine	Sum of (vacC19VOs[1].numLIPvacc + vacC19VOs[3].numLIPvacc + vacC19VOs[4].numLIPvacc + vacC19VOs[5].numLIPvacc) must be >= sum of (vacC19VOs[8].numLIPvacc + vacC19VOs[9].numLIPvacc + vacC19VOs[10].numLIPvacc + vacC19VOs[11].numLIPvacc)	Must be a whole number	Cumulative number of licensed independent practitioner HCP with complete primary vaccine series who have received an additional primary or booster dose of Janssen COVID-19 vaccine

Field	Requirement	Values	Format†	Description of Field
vacC19VOs[10].numVolVacc	Conditionally Required  Required if reporting additional primary or booster dose of Janssen COVID-19 vaccine	Sum of (vacC19VOs[1].numVolvacc + vacC19VOs[3].numVolvacc + vacC19VOs[4].numVolvacc + vacC19VOs[5].numVolvacc) must be >= sum of (vacC19VOs[8].numVolvacc + vacC19VOs[9].numVolvacc + vacC19VOs[10].numVolvacc + vacC19VOs[11].numVolvacc)	Must be a whole number	Cumulative number of adult student/trainee and volunteer HCP with complete primary vaccine series who have received an additional primary or booster dose of Janssen COVID-19 vaccine
vacC19VOs[10].numOCPVacc	Conditionally Required  Required if reporting additional primary or booster dose of Janssen COVID-19 vaccine	Sum of (vacC19VOs[1].numOCPvacc + vacC19VOs[3].numOCPvacc + vacC19VOs[4].numOCPvacc + vacC19VOs[5].numOCPvacc) must be >= sum of (vacC19VOs[8].numOCPvacc + vacC19VOs[9].numOCPvacc + vacC19VOs[10].numOCPvacc + vacC19VOs[11].numOCPvacc)	Must be a whole number	Cumulative number of other contract personnel with complete primary vaccine series who have received an additional primary or booster dose of Janssen COVID-19 vaccine
vacC19VOs[11].covid19vaccinename	Conditionally Required  Required if reporting additional primary or booster dose of vaccine of unspecified manufacturer	UNSPECIFIED	-	COVID-19 Vaccine Name (UNSPECIFIED - unspecified manufacturer)
vacC19VOs[11].covid19vaccine	Conditionally Required  Required if reporting additional primary or booster dose of vaccine of unspecified manufacturer	UNSPECIFIED2	-	COVID-19 Vaccine (UNSPECIFIED – additional primary or booster dose of COVID-19 vaccine series: unspecified manufacturer)
vacC19VOs[11].numEmpVacc	Conditionally Required  Required if reporting additional primary or booster dose of vaccine of unspecified manufacturer	Sum of (vacC19VOs[1].numempvacc + vacC19VOs[3].numempvacc + vacC19VOs[4].numempvacc + vacC19VOs[5].numempvacc) must be >= sum of (vacC19VOs[8].numempvacc + vacC19VOs[9].numempvacc + vacC19VOs[10].numempvacc + vacC19VOs[11].numempvacc)	Must be a whole number	Cumulative number of employee HCP with complete primary vaccine series who have received an additional primary or booster dose of COVID-19 vaccine: unspecified manufacturer

Field	Requirement	Values	Format†	Description of Field
vacC19VOs[11].numLIPVacc	Conditionally Required  Required if reporting additional primary or booster dose of vaccine of unspecified manufacturer	Sum of (vacC19VOs[1].numLIPvacc + vacC19VOs[3].numLIPvacc + vacC19VOs[4].numLIPvacc + vacC19VOs[5].numLIPvacc) must be >= sum of (vacC19VOs[8].numLIPvacc + vacC19VOs[9].numLIPvacc + vacC19VOs[10].numLIPvacc + vacC19VOs[11].numLIPvacc)	Must be a whole number	Cumulative number of licensed independent practitioner HCP with complete primary vaccine series who have received an additional primary or booster dose of COVID-19 vaccine: unspecified manufacturer
vacC19VOs[11].numVolVacc	Conditionally Required  Required if reporting additional primary or booster dose of vaccine of unspecified manufacturer	Sum of (vacC19VOs[1].numVolvacc + vacC19VOs[3].numVolvacc + vacC19VOs[4].numVolvacc + vacC19VOs[5].numVolvacc) must be >= sum of (vacC19VOs[8].numVolvacc + vacC19VOs[9].numVolvacc + vacC19VOs[10].numVolvacc + vacC19VOs[11].numVolvacc)	Must be a whole number	Cumulative number of adult student/trainee and volunteer HCP with complete primary vaccine series who have received an additional primary or booster dose of COVID-19 vaccine: unspecified manufacturer
vacC19VOs[11].numOCPVacc	Conditionally Required  Required if reporting additional primary or booster dose of vaccine of unspecified manufacturer	Sum of (vacC19VOs[1].numOCPvacc + vacC19VOs[3].numOCPvacc + vacC19VOs[4].numOCPvacc + vacC19VOs[5].numOCPvacc) must be >= sum of (vacC19VOs[8].numOCPvacc + vacC19VOs[9].numOCPvacc + vacC19VOs[10].numOCPvacc + vacC19VOs[11].numOCPvacc)	Must be a whole number	Cumulative number of other contract personnel HCP with complete primary vaccine series who have received an additional primary or booster dose of COVID-19 vaccine: unspecified manufacturer