

Run Chart

Description

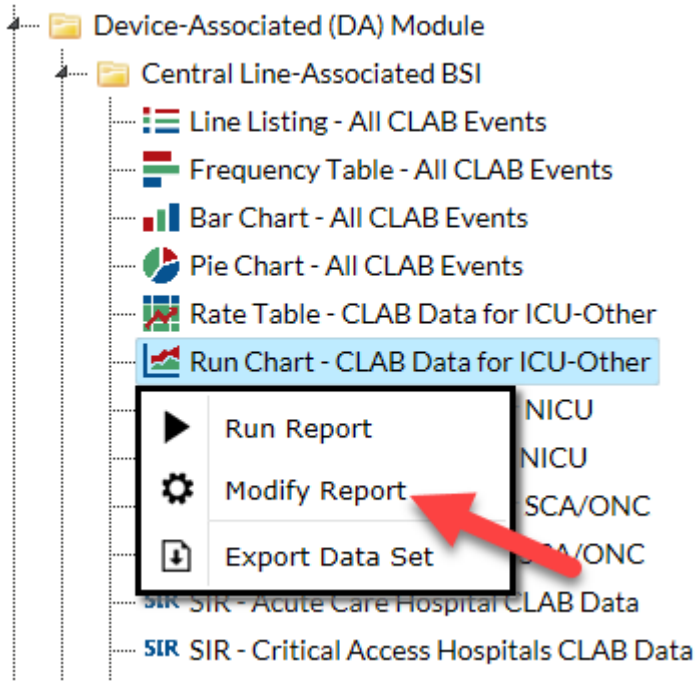
A run chart (or control chart) is a line graph showing change in a variable over a selected time period. This is a useful output if you would like to view, for example, the change in CLABSI rate over time in each location at your facility.

Example

Let's create a graphical representation of the change in CLABSI rates from 2015 through 2016 for each specific location in the facility.

Modification Page

For further information, please visit the Modification Guidelines page: <https://www.cdc.gov/nhsn/pdfs/ps-analysis-resources/howtomodifyreport.pdf>



To specify the time period of the run chart, navigate to the “Time Period” tab of the Modify window. Select “summaryYr” as the Date variable and enter 2015 to 2016 for the date range.

Title/Format	Time Period	Filters	Display Options
--------------	--------------------	---------	-----------------

Time Period:

Date Variable	Beginning	Ending	<input type="button" value="✕ Clear Time Period"/>
summaryYr ▼	2015	2016	

Enter Date variable/Time period at the time you click the Run button

To select the display, navigate to the “Display Options” tab. For the Chart Variable, select the variable you wish to view on the run chart, such as CLABSI rate (CLABRate). The “Group by” option is automatically set to “location” to create separate run charts for each location. Monthly rates will always be displayed in the run chart. For comparison purposes, you can insert an overlay line onto your run chart that shows the NHSN aggregated pooled mean, or you can create a reference line with a value of your choice. Note: If you define your own reference line, the same value will be used for each run chart in the output.

Modify "Run Chart - CLAB Data for ICU-Other "

Show descriptive variable names (Print List)

Analysis Data Set: bs2_CLAB_RatesI

Title/Format	Time Period	Filters	Display Options
--------------	-------------	---------	------------------------

Run Chart Options:

Chart Variable	Group by
CLABRate ▼	location ▼

Display Overlay Line(s)

- NHSN Aggregated Pooled Mean
- Local Pooled Mean
- Reference Line with value =

Smoothing Enabled

- 3 Point Moving Average
- 5 Point Moving Average



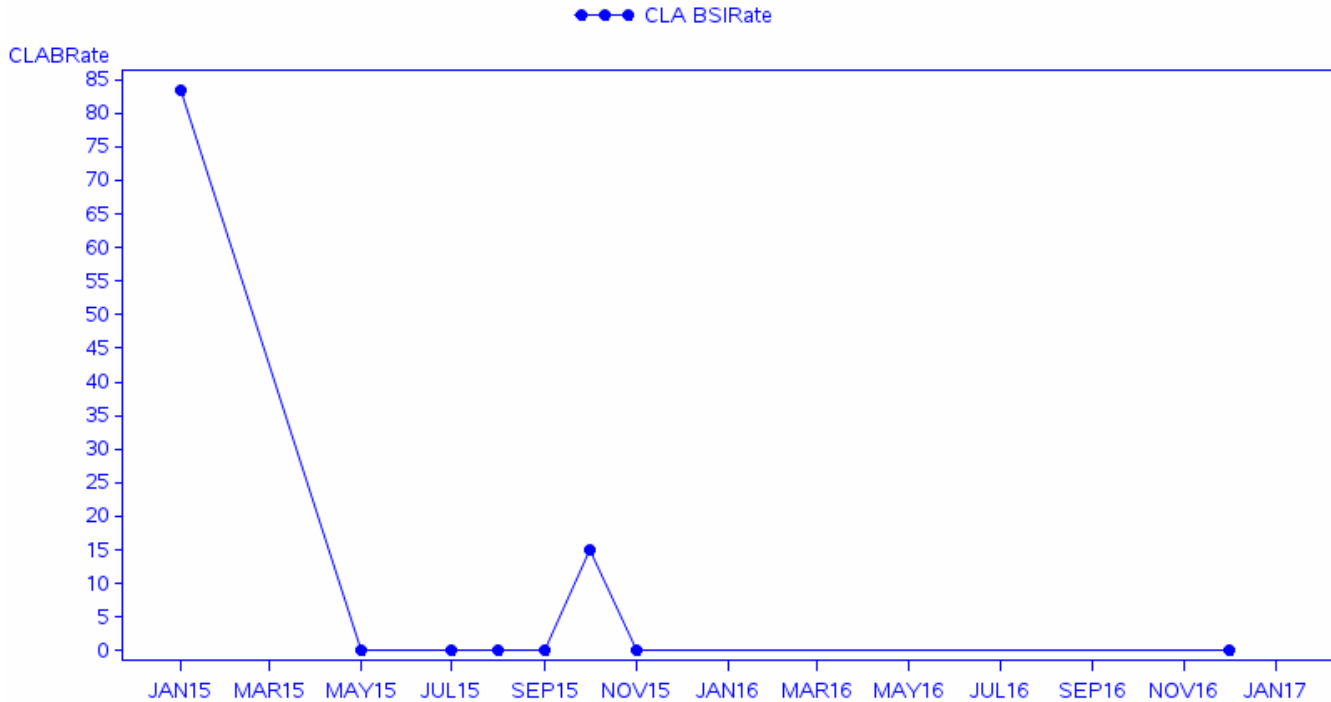
Output/Results and Interpretation

National Healthcare Safety Network

Run Chart for Central Line-Associated BSI Data for ICU-Other

As of: March 7, 2017 at 10:35 AM Date Range: BS2_CLAB_RATESICU summaryYr
orgID=10401 location=ICU

2015 to 2016



NOTE: Strata with fewer than 2 data points have been omitted.

The facility's monthly CLABSI rates in the ICU are shown by the bolded points connected by the blue solid line during the time period 2015-2016. In this example, the facility's CLABSI rate was high in January 2015 and drastically declined to zero by May 2015. The facility was able to keep the rate at zero for the remainder of the year, with the exception of a slight spike from September to November 2015.

Additional Resources:

Introduction to NHSN Analysis: <http://www.cdc.gov/nhsn/PDFs/training/intro-AnalysisBasics-PSC.pdf>

How to filter your data by time period (*URL to be determined*)

How to filter your data on additional criteria (*URL to be determined*)