

How to Create a Rate Table

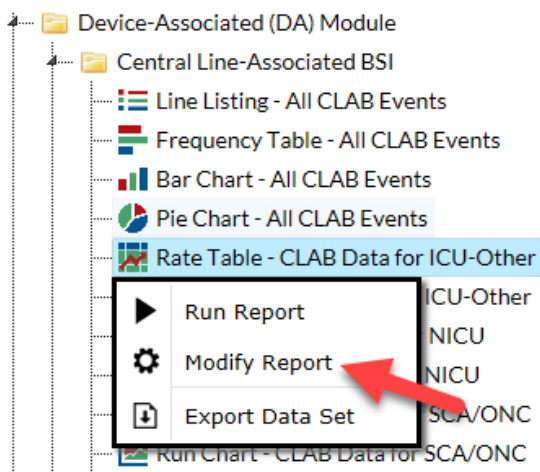
Description

Rate tables display a facility's calculated rates and device-utilization ratios (where appropriate). If available, rate tables also provide NHSN published pooled means and the comparison of the facility's rates and ratios to those pooled means. Descriptions of rates and ratios can be found in the event-specific chapters of the NHSN Patient Safety Component Manual.

Example

You would like to create a rate table for CLABSI data reported in 2015 for the cardiothoracic ICU (71 ICU) in your facility. You would also like to see separate CLABSI rates for each month in 2015.

1. On the "Analysis Reports" page, click on the "Device-Associated (DA) Module" and select the "Central Line-Associated BSI" subfolder. Click on "Rate Table- CLAB Data for ICU-Other" and select "Modify Report."



Modification Page

For further information, please visit the Modification Guidelines page: <https://www.cdc.gov/nhsn/pdfs/ps-analysis-resources/howtomodifyreport.pdf>

To modify the time period, navigate to the "Time Period" tab of the Modification page. Select "summaryYr" as the date variable and enter the Beginning and Ending dates as 2015.

A screenshot of the "Time Period" tab in the report modification interface. The "Date Variable" dropdown is set to "summaryYr". The "Beginning" and "Ending" date fields both contain "2015". A red arrow points to the "summaryYr" dropdown. There is a "Clear Time Period" button and a checkbox for "Enter Date Variable/Time period at the time you click the Run button".

Title/Format	Time Period	Filters	Display Options
Time Period:			
Date Variable	Beginning	Ending	
summaryYr	2015	2015	<input type="button" value="Clear Time Period"/>
<input type="checkbox"/> Enter Date Variable/Time period at the time you click the Run button			

To modify the filters, navigate to the “Filters” tab on the Modification page and select “location” from the first dropdown box, “equal” from the second dropdown box, and “71ICU-71ICU CARDIAC” from the third dropdown box.

The screenshot shows the 'Filters' tab of a software interface. At the top, there are four tabs: 'Title/Format', 'Time Period', 'Filters' (which is highlighted in green), and 'Display Options'. Below the tabs, there is a section for 'Additional Filters' with 'Show' and 'Clear' buttons. A filter rule is displayed, enclosed in a red rectangular box. This rule has three dropdown menus: the first is set to 'location', the second to 'equal', and the third to '71ICU - 71ICU CARDIAC'. To the left of the rule are 'AND' and 'OR' buttons, and to the right are 'Add group', 'Add rule', and 'Delete' buttons.

Navigate to the “Display Options” tab on the Modification page and select “summaryYM” as the Group by variable.

The screenshot shows the 'Display Options' tab of a software interface. At the top, there are four tabs: 'Title/Format', 'Time Period', 'Filters', and 'Display Options' (which is highlighted in green). Below the tabs, there is a section for 'Rate Table Options'. Under this section, there is a 'Group by:' label followed by a dropdown menu that is currently set to 'summaryYM'. A red arrow points to the dropdown menu.

Output/Results and Interpretation

Different rate tables for each location are automatically created. Below is the example of a rate table for CLABSI events, grouped by month in 2015 in 71 ICU of this facility (the result of modifications made on page 1 of this document).

National Healthcare Safety Network Rate Table for Central Line-Associated BSI Data for ICU-Other

As of: November 7, 2016 at 1:24 PM

Date Range: BS2_CLAB_RATE SICU summaryYr 2015 to 2015

orgID=10018 loccdc=IN:ACUTE:CC:CT

location	summaryYM	CLABCount	numCLDays	CLABRate	numPatDays
71ICU	2015M01	0	250	0.000	1280

Data contained in this report were last generated on October 18, 2016 at 10:11 AM.

- During 2015, the cardiac ICU (71ICU) reported 1 month of CLABSI data. In January (2015M01), this location reported 0 central line-associated BSIs (“CLABSI Count”) and a total of 250 days in which patients had central lines (“Central Line Days”).
- Dividing 0 (numerator) by 250 (denominator) and multiplying by 1000 gives this location a CLABSI rate of 0 per 1000 central line days (CLABSI Rate).

Additional Resources:

Introduction to NHSN Analysis: <http://www.cdc.gov/nhsn/PDFs/training/intro-AnalysisBasics-PSC.pdf>

How to filter your data by time period: <https://www.cdc.gov/nhsn/pdfs/ps-analysis-resources/filtertimeperiod.pdf>

How to filter your data on additional criteria: <https://www.cdc.gov/nhsn/pdfs/ps-analysis-resources/selectioncriteria.pdf>

Annual Reports: <http://www.cdc.gov/nhsn/dataStat.html>

